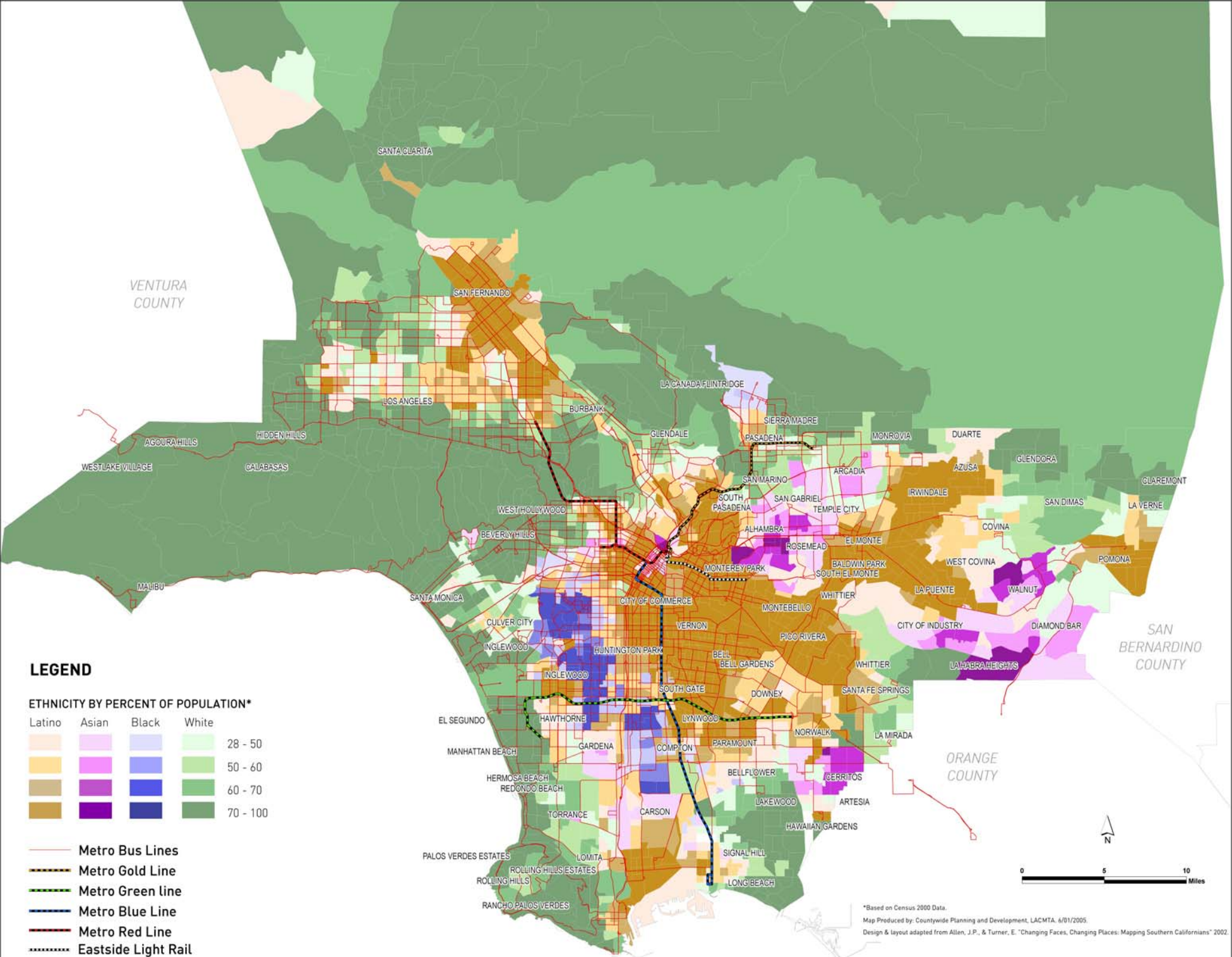


PREDOMINANT ETHNIC GROUP - 2000 CENSUS



LEGEND

ETHNICITY BY PERCENT OF POPULATION*

Latino	Asian	Black	White	Percent Range
Light Orange	Light Purple	Light Blue	Light Green	28 - 50
Orange	Purple	Blue	Green	50 - 60
Dark Orange	Dark Purple	Dark Blue	Dark Green	60 - 70
Dark Orange	Dark Purple	Dark Blue	Dark Green	70 - 100

- Metro Bus Lines
- Metro Gold Line
- Metro Green Line
- Metro Blue Line
- Metro Red Line
- Eastside Light Rail

ORANGE COUNTY

SAN BERNARDINO COUNTY

0 5 10 Miles

N

*Based on Census 2000 Data.
Map Produced by: Countywide Planning and Development, LACMTA. 6/01/2005.
Design & layout adapted from Allen, J.P., & Turner, E. "Changing Faces, Changing Places: Mapping Southern Californians" 2002.