

# Metro Express Lanes Project

MONTHLY PROJECT STATUS REPORT



**Metro**

EXPRESS LANE ONLY

EXPRESS LANE ONLY

10/03/09

# **METRO LA CRD (ExpressLanes) PROJECT**

## **MONTHLY PROJECT STATUS REPORT**

**THE PREPARATION OF THIS DOCUMENT HAS BEEN FINANCED IN PART THROUGH A GRANT FROM THE U. S. DEPARTMENT OF TRANSPORTATION, FEDERAL TRANSIT ADMINISTRATION (FTA).**

**APRIL 2010**

## **TABLE OF CONTENTS**

	Page No.
Project Overview & Status.....	1-3
Management Issues.....	4-5
Project Status	
• Project Scope.....	6-8
• Schedule	
○ Key Milestones Six-Month Lookahead .....	9-10
○ Project Summary Schedule .....	11
○ Critical Path Narrative.....	12
• Project Cost Status/Financial/Grant Status.....	13-16
• Staffing.....	17
• Real Estate.....	18
• Environmental.....	19
• Community Relations.....	20
• Quality Assurance.....	20
• Safety.....	20
• Third Party.....	21-24
Chronology of Events.....	25-26
Appendices.....	27-30

## **PROJECT OVERVIEW & STATUS**

*Metro, Caltrans, and other mobility partners are working together to develop a package of solutions that will increase traffic flow and provide better travel options on I-10 and I-110 in Los Angeles County. ExpressLanes is a one-year demonstration project that will test innovations to improve existing transportation systems in three sub-regions: the San Gabriel Valley, Central Los Angeles and the South Bay Cities. These three sub-regions represent nearly 50 percent of both population and employment in LA County.*

*The Project Goal is to improve mobility and provide congestion relief on I-10 and I-110 corridors through the introduction of congestion pricing by converting High Occupancy Vehicle (HOV) lanes to High Occupancy Toll (HOT) lanes, improvement of transit service and other alternatives to driving, improvements to transit facilities, and the implementation of an intelligent parking management system in downtown Los Angeles.*

*This project offers improved transportation options and a choice for drivers of single occupant vehicles (SOV) to pay to travel in a carpool lane. The minimum toll per mile is \$0.25 and the maximum toll per mile is \$1.40. The general purpose lanes will not be tolled. An additional aim of the program is to foster incentives for sustainable change that creates travel time savings, increased trip reliability, cost savings, improves air quality and effectively manages our current roadway network.*

*The federal grant name for this Project is the Los Angeles County Congestion Reduction Demonstration (LA CRD). It is estimated that more than 2,400 construction-related jobs will be generated by this project.*

### **PROJECT MANAGEMENT**

The Project is 14.3% complete. Staff continues to work with Caltrans to address potential issues of conflict which may arise as a result of work they are currently performing related to the I-10 Rehab project. Staff is looking at existing contracts and their status in order to manage any risk to our ExpressLanes project.

### **TOLL INFRASTRUCTURE AND FREEWAY/ROADWAY IMPROVEMENTS**

This element is currently in the Environmental and Preliminary Design phases. Caltrans is the lead agency for the NEPA and CEQA Environmental Documents. On April 28, 2010, the Final EIR/FONSI for the I-10 and I-110 HOT Lanes was approved.

PB, our consultant for the Preliminary Engineering phase, continues to focus on the 30% design package as well as the preparation of the Statement of Work and other documents related to the Design, Build, Operate and Maintain (DBOM) RFP. We are targeting the middle of May to advertise the DBOM RFP.

Staff continues to work with FTA/FHWA partners regarding the need for a schedule extension in order to ensure that the roadway improvements are completed prior to opening the HOT Lanes. Current estimates anticipate the need for a 19-month extension which would shift the opening date from December 31, 2010 to August 1, 2012. On February 25, 2010 the Metro

## **PROJECT OVERVIEW & STATUS (Contd)**

Board approved amending the existing MOU with USDOT to extend the deadline for the conversion of the HOV lanes on the I-10 and I-110 to HOT lanes for up to 19 months to allow for the completion of the roadway improvements. Assemblymember Mike Eng agreed to author AB1224 which would extend Metro's tolling authority until January 2015.

### **TRANSIT SERVICE IMPROVEMENTS**

59 new clean-fuel buses will be operated to support the demonstration project. Metro continues to operate its new Silver Line service connecting passengers to the El Monte and Artesia Transit Centers. For the month of April, the Silver Line weekday boardings total was 7,173 which represents an 8.4% increase in ridership since the Silver Line started service in December 2009.

Both Gardena and Foothill have placed the order for their buses and will be receiving them later this year. Torrance expects to place their order in June 2010, or earlier as they have an approved grant from FTA.

LADOT completed Preliminary Engineering (PE) of all 19 intersections at the end of February. Staff continues to work on the bid package in preparation for a June 2010 release date. The E-76 for Construction funds has been submitted to Caltrans for approval. Construction is expected to start in August 2010.

### **TRANSIT FACILITY IMPROVEMENTS**

***El Monte Transit Center*** – During April Metro staff continued coordination with the Gas Co. for relocating a 20" gas main. Completed construction at Power Chevrolet; Completed demolition of the Metro Transportation Building & completed paving at the site. Received 8 technical D/B proposals for Contract C0958 El Monte Station D/B construction. Four (4) price bids were opened 03/15/10. Staff determined the option selections for the apparent low bid. Notice of Intent to award was issued 03/23/10. Procurement has received and will address the NOI protests within the timeframe scheduled for contract award. Contract C0959 for the temporary terminal was awarded to S.H.E for \$657K & is awaiting protest period completion before NTP is issued. Contract C0934R for Demo, Repave and Lighting Installation over the former Old Transportation Bldg is complete.

***Patsaouras Plaza*** – During April staff continued advanced conceptual engineering efforts. Design charettes with stakeholders (including Metro, Caltrans, FHWA, FTA, and ProLogis) were held January 26-27, 2010. Engaged consultant to prepare PR/PSR reports for Caltrans approval, and continued coordination with Caltrans disciplines. Final concept has been developed but requires additional refinements. Conceptual design alternatives were developed and reviewed March 9, 2010. 65% ACE to be submitted 10-May-2010. Additional coordination with High Speed Rail project required to reduce potential future design and construction conflicts.

## **PROJECT OVERVIEW & STATUS (Contd)**

**Harbor Transitway** – This project will have at least 6 procurements. Bids were received for the Artesia Law Enforcement substation & CCTVs. The low bid contract was awarded to Minco Construction for \$547K. Received 4 technical bids for Station Lighting & UPS; apparent low bid was \$443K vs. Metro's estimate of \$532K. Procurement activities are ongoing for sound attenuation pilot test & the bus stop cutouts. Project management is still coordinating with staff for the CCTV's and signage/way-finding workscope.

**Division 13 Facility** - The design team continues to progress in completion of the final design, and a 90% complete submittal was submitted to Metro January 15, 2010. City of Los Angeles approved the vacation of Lyon Street. Conducted a third party review of the 90% submittal January 18-22, 2010. Metro Engineering reviewed the 90% submittal and was rejected. An interim 95% submittal developed and was submitted April 26, 2010. Metro review is ongoing. 100% Design is anticipated at June 1-14, 2010.

**Pomona Metrolink Station** – The Contractor completed the retaining wall, underground electrical, drainage facilities, and asphalt concrete paving in the area of the new parking spaces east of the existing parking spaces. Construction of the platform extension began. Construction of the temporary platform continues.

### DEMAND-BASED PARKING PRICING

Received FHWA approval on the technical matters in the ExpressPark Project Plan, Caltrans gave informal approval of the Project Plan; We have agreement with FHWA and Caltrans regarding the next steps. Currently reviewing the RFP to assure compliance with City, State and Federal requirements. The project will require two Federal Authorizations – one for construction of Dynamic Message Signs and one for the PE and all other work to be done. Preparation of the E-76 documents is in process. Expected RFP release is scheduled for June 2010.

## **MANAGEMENT ISSUES**

**Concern No. 1:** Caltrans Cooperative Agreement for ExpressLanes

**Status/Action** The team continues to meet on a regular basis and we are now very close to completing the agreement. Metro is now awaiting the final revisions Caltrans is requesting in order to complete the agreement. Timeline for completion of the Cooperative Agreement is May 2010.

**Concern No. 2:** Review of the 30% Design Package and Finalization of the RFP Documents

**Status/Action** An Industry Review was held on March 24, 2010 and Metro is now receiving comments from the Industry as well as the 3rd party agencies, including FHWA and FTA, all of whom have been given copies of the Draft RFP. Metro will incorporate as many comments into the final RFP document as is possible and practicable. As additional reviews are performed on the document corrections that impact the contract will be made, as appropriate.

**Concern No. 3:** Project Risk Register

**Status/Action** At the request of the federal partners, Metro submitted a schedule risk analysis to FTA/FHWA/USDOT on April 9, 2010. The major project risks to schedule at this time are: approval of the Fact Sheets by Caltrans and FHWA and advertising the DBOM RFP.

**Concern No. 4:** Real Estate

**Status/Action** Property swap with the City of Alhambra has not been fully executed. A formal MOU is with Metro Legal Counsel for review and finalization. Metro's goal is to execute this MOU by May 2010.

**Concern No. 5:** Tolling Agreement

**Status/Action** Tolling agreement with USDOT has not been finalized. Draft language is currently under review by USDOT.

**Concern No. 6:** Project Management Plan (PMP)

**Status/Action** The Project Management Plan (PMP) has not been finalized. The PMP is under internal review by Executive staff. The document is expected to be finalized by May 2010.

### MANAGEMENT ISSUES (Contd)

Concern No. 7: Project Oversight Agreement (POA)

Status/Action FHWA has requested that Caltrans execute a POA for the HOT lanes element of this project. POA executed April 28, 2010.



## PROJECT SCOPE



Los Angeles County Metropolitan Transportation Authority and Caltrans have partnered with Foothill Transit, Gardena Municipal Bus Lines, Los Angeles Department of Transportation, Southern California Regional Rail Authority (Metrolink) and Torrance Transit, to develop a package of solutions to increase traffic flow and provide travel options on the I-10 and I-110 freeways in Los Angeles County. These solutions will be incorporated into a one-year demonstration that will test new technologies to improve the existing transportation system called ExpressLanes.

The project goal is to improve mobility and provide congestion relief on the I-10 and I-110 freeways through the introduction of congestion pricing by converting High Occupancy Vehicle (HOV) Lanes to High Occupancy Toll (HOT) Lanes, improvements to the transit service along the freeways, transit facility improvements, increased funding for vanpools and the introduction of an intelligent parking management program, called ExpressPark, in downtown Los Angeles.

This project offers improved transportation options and a choice for drivers of single occupant vehicles (SOV) to pay to travel in a carpool lane. The general purpose lanes will not be tolled. The aim of the program is to foster incentives for sustainable change that creates travel time savings, increased trip reliability, cost savings, improved air quality and effectively manages our current roadway network.

## **PROJECT SCOPE (Contd)**

The features of the ExpressLanes project include:

### **1) TOLL INFRASTRUCTURE AND FREEWAY/ROADWAY IMPROVEMENTS**

- **I-10 HOV Conversion to HOT Lanes (I-605 to Alameda St./Union Station) and I-110 HOV Conversion to HOT Lanes (Artesia Transit Center to Adams Blvd.)** – an electronic toll collection system will be constructed that includes toll infrastructure, changeable message and static signage, transponders, cameras, back-office administration and management, CHP enforcement, and incident management response.
- **Add 2<sup>nd</sup> HOT Lane on I-10 (between I-605 and I-1710)** – a 2<sup>nd</sup> HOT lane will be added on the I-10 between I-605 and I-710 in both the eastbound and westbound directions. This will be accomplished by re-striping the existing enforcement zone buffer and minor roadway widening.
- **Widen Adams Blvd. and Lane Modifications to Adams Blvd Off-Ramp** – modifications at Adams Blvd. include re-configuration to include two dedicated left turn lanes and one dedicated right turn lane. Widening of Adams Blvd. will require the sidewalk to be taken to add an additional dedicated right turn in the westbound direction. To replace the sidewalk, a pedestrian over-crossing will be constructed over the I-110 freeway on the north side of Adams Blvd.
- **Project Study Report (PSR): Adams Blvd.-Figueroa St. HOT Lane Flyover** – funding will be provided to Caltrans to perform a PSR to identify alternatives to connect from the northbound I-110 HOT Lanes to Figueroa St. The PSR will be coordinated with the Harbor Freeway Cap Park Feasibility Study lead by the City of Los Angeles.

### **2) TRANSIT SERVICE IMPROVEMENTS**

- **Enhanced Silver Line BRT and Feeder Services** – Funding will be provided to Metro for 41 new CNG buses to enhance service on the I-10 and I-110 and create a new dual-hub BRT. In addition, Foothill Transit will deploy 12 new buses, Gardena Transit will deploy 2 new gas-hybrid buses and Torrance Transit will deploy 4 new buses to improve additional commuter bus service on both the I-10 and I-110. During the 1-year Demonstration period, Foothill, Torrance and Gardena will also receive an operating subsidy for their expanded service.
- **Transit Signal Priority in Downtown Los Angeles** – The LADOT will install bus signal priority technology on Figueroa St. between Wilshire Blvd. and Adams Blvd. (15 signals) and Flower St. between Wilshire Blvd. and Olympic Blvd. (5 signals) to enhance transit operations. This project will also extend the existing AM peak-period northbound bus-only lane on Figueroa St. to cover the PM peak-period.

## **PROJECT SCOPE (Contd)**

- **Vanpools** – Activities to support the formation of 100 new vanpools include marketing and vanpool start-up costs such as training community groups to form commuter vanpools and ensure that vanpools are created and retained, ride-matching software, driver (or other empty seat subsidies), back-up driver training exams and parking lot leases.

### **3) TRANSIT FACILITY IMPROVEMENTS**

- **El Monte Transit Center Improvements** – a new 30-bay bus terminal will be constructed at the current El Monte Transit Center location to accommodate service improvements and expansion. This will add capacity for Metro's dual-hub BRT service and Foothill's Silver Streak service and will be LEED Gold Certified.
- **Patsouras Plaza Connector to the El Monte Busway** – the existing passenger boarding/alighting areas located at the corner of Alameda St. and the Busway entrance will be relocated to the south side of Patsouras Plaza to allow direct pedestrian access to the Plaza and Union Station.
- **Division 13 (formerly Union Division)** – a new bus operations and maintenance facility will be constructed adjacent to Metro headquarters. This new facility will house and operate a mixed fleet of approximately 200 CNG buses and will be built to accommodate 40-foot, 45-foot and 60-foot articulated buses. It will also include bus and automobile parking, administrative offices, a maintenance shop and all associated maintenance equipment and will be LEED Silver Certified.
- **Harbor Transitway Park and Ride Improvements** – improvements will include enhanced signage, lighting and security at 8 Park and Ride lots. A Sheriff's Substation will be constructed at Artesia Transit Center. New bike lockers will be installed and bus stops will be re-located for lines 108 and 115 so that they are under the Slauson and Manchester Transitway stations.
- **Pomona Metrolink Station Expansion** – this project consists of new pedestrian access improvements, 100 new parking spaces and the extension of the platform to accommodate additional rail cars at the Pomona (North) Metrolink Station that serves the San Bernardino Line.

### **4) DEMAND-BASED PARKING PRICING**

- **ExpressPark** – the LADOT will deploy new parking meter technology to 5,500 on-street metered parking spaces in the Central Business District, Chinatown, Civic Center, East Downtown, Little Tokyo and Washington/Broadway. These new meters will charge demand-based parking rates depending on the time of day and length of stay. They will also provide alternative payment options (i.e. credit card, cell phone). In addition to the on-street meters, occupancy reporting systems will also be implemented for the major City-owned off-street parking facilities (approx 7,500). Real-time parking information for 13,000 public on- and off-street parking spaces will be provided through various media including: websites, mobile phones, and on-street dynamic message signs.

**KEY MILESTONE SCHEDULE SIX-MONTH LOOKAHEAD**

	Milestone Date	Apr-10	May-10	Jun-10	Jul-10	Aug-10	Sep-10
<b>HOT Lane Project</b>							
Delivery of Project Report	04/02/10	○					
DBOM Authorization / CTC Approval	04/07/10	Ⓜ Metro					
Metro Board Approval of DBOM Contract	04/22/10	Ⓜ Metro					
FED Signed EIR	04/27/10	FHWA					
Final Fact Sheets Review - Caltran	04/28/10	CT					
Final Fact Sheets Review - FHWA	04/28/10	FHWA					
Advertise DBOM RFP	05/06/10		Ⓜ Metro				
Issue Change Order to Atkinsons	05/07/10		CT				
MTA Board Approval of EIR	05/28/10		Ⓜ Metro				
Final addendum	06/18/10			○			
Bidders Prepare Proposals	07/13/10				○		
Evaluate & Rank Proposals for Competitive Range	07/27/10				Ⓜ Metro		
Oral Interview	08/06/10					Ⓜ Metro	
Negotiate with Proposers in Competitive Range	09/13/10						Ⓜ Metro
Best Value Final Evaluation	09/27/10						Ⓜ Metro
<b>Transit Facilities Improvement</b>							
<b>Division 13 - New Construction</b>							
Metro 100% Design Review	06/02/10			Ⓜ Metro			
Renderings for Construction Procurement	06/21/10				Ⓜ Metro		
Metro Board Approval of DBOM Contract	07/22/10				Ⓜ Metro		
<b>Harbor Transit Way Improvement</b>							
Issue NTP Artesia	05/07/10		Ⓜ Metro				
Advertise/Bid Eval/Award: Stn Lighting & UPS	05/20/10		Ⓜ Metro				
Advertise/Bid Eval/Award: 37th St Sound Enclosure	06/15/10			Ⓜ Metro			
Issue NTP Lighting & UPS	06/21/10			Ⓜ Metro			
Issue NTP Sound Enclosure	07/07/10				Ⓜ Metro		
Advertise/Bid Eval/Award: Bus Stop Cutouts	07/20/10					Ⓜ Metro	
Issue NTP Bus Cutouts	08/16/10						Ⓜ Metro
Ⓜ Metro	Metro Milestone	○	Design/Build	△	Third Parties Approval		
CT	Caltrans Milestone	*	New Date	FHWA	FHWA Federal Highway Administration		

**KEY MILESTONE SCHEDULE SIX-MONTH LOOKAHEAD**

Milestone Date	Apr-10	May-10	Jun-10	Jul-10	Aug-10	Sep-10
<b>El Monte Transit Center</b>						
Advertise DB Contract	04/02/10	M Metro				
DB Bids Due & Evaluation	05/07/10		M Metro			
Establish MOU with Caltrans	05/17/10		M Metro			
Award DB Contract	06/07/10			M Metro		
Issue NTP DB Contract	07/02/10				M Metro	
<b>Pastouras Plaza</b>						
Advertise DB Contract	06/17/10			M Metro		
DB Bids Due & Evaluation	09/02/10					M Metro
Award DB Contract	09/17/10					M Metro

Metro Milestone

Caltrans Milestone

Design/Build

New Date

Third Parties Approval

FHWA Federal Highway Administration

**PROJECT SUMMARY SCHEDULE**

ExpressLanes Project Phase Opening						2010					2011				2012				2013				2014												
Activity ID	Activity Name	Orig. Dur.	Rem. Dur.	Start	Finish	Q4	Q1	Q2	Q3	Q4	Q1	Q2	Q3	Q4	Q1	Q2	Q3	Q4	Q1	Q2	Q3	Q4	Q1	Q2	Q3	Q4	Q1	Q2	Q3	Q4					
<b>ExpressLanes Project Phase Opening</b>																																			
	Community Outreach	1093	838	Jun-06-09 A	Aug-02-13	[Gantt bar from Q4 2009 to Q4 2013]																													
	I-10 & I-110 HOT Lanes	752	509	Apr-03-06 A	Apr-1 -12	[Gantt bar from Q4 2009 to Q4 2010]																													
	EIR Preparation and Approval	230	25	Jun-01-09 A	May-06-10	[Gantt bar from Q4 2009 to Q4 2010]																													
	Design	274	30	Apr-03-09 A	May-13-10	[Gantt bar from Q4 2009 to Q4 2010]																													
	Toll System Solicitation Planning	65	0	Apr-27-09 A	Jul-31-09	[Gantt bar from Q4 2009 to Q4 2010]																													
	DBOM Contract Procurement	157	157	Apr-02-10	Nov-15-10	[Gantt bar from Q4 2009 to Q4 2010]																													
	Civil Construction	617	509	Aug-23-09 A	Apr-11-12	[Gantt bar from Q4 2009 to Q4 2011]																													
	Tolling Implementation	833	833	Nov-15-10	Dec-31-12	[Gantt bar from Q4 2010 to Q4 2012]																													
	I-10 Rehab Construction (CALTRANS)	667	350	Mar-27-09 A	Sep-02-11	[Gantt bar from Q4 2009 to Q4 2011]																													
	Transit Service Improvements (METRO)	293	189	Sep-16-09 A	Dec-02-10	[Gantt bar from Q4 2009 to Q4 2010]																													
	Transit Facility Improvements (METRO)	148	586	Apr-04-09 A	Jul-15-12	[Gantt bar from Q4 2009 to Q4 2012]																													
	Metrolink Pomona Station Improvements	412	304	May-01-09	Jun-16-11	[Gantt bar from Q4 2009 to Q4 2011]																													
	Transit Signal Priority in Downtown (LADOT)	307	259	Sep-15-09 A	Apr-13-11	[Gantt bar from Q4 2009 to Q4 2011]																													
	ExpressPark (LADOT)	350	357	Feb-02-09 A	Jun-19-12	[Gantt bar from Q4 2009 to Q4 2012]																													
	Vanpools	380	380	Feb 01-12	Feb 01-12	[Gantt bar from Q4 2010 to Q4 2010]																													
	CRD Data Collection	504	504	Aug-01-11	Aug-01-13	[Gantt bar from Q4 2010 to Q4 2012]																													
Project ID: HLane Current Phase		Summary														Page 1 of 1																			
Data Date: Apr-02-10																																			

## **CRITICAL PATH NARRATIVE**

The Critical Path of the HOT Lanes DBOM contract runs through the Toll Implementation design/procurement/test related activities. The following layout shows all the activities related to the Toll Implementation scope of work. The schedule assumes a one month end-to-end testing period for each of the corridors, following installation of the Toll Operation Service Center and two months of integrated test period for the entire system following the corridor-wide testing. Our design consultants have confirmed that those durations are adequate for the testing activities.

**PROJECT COST STATUS**

CONGESTION REDUCTION DEMONSTRATION PROGRAM  
COMBINED COST REPORT BY PROJECT  
METRO CONSTRUCTION MANAGEMENT DIVISION

PERIOD ENDING: APRIL 2010  
DOLLARS

PROJECT	NOTES	ADOPTED BUDGET	CURRENT FORECAST		COMMITMENTS		EXPENDITURES		BUDGET / FORECAST VARIANCE	
			PERIOD	TO DATE	PERIOD	TO DATE	PERIOD	TO DATE		
CP 201050 - PROCURE 41 BUSES		28,317,164	-	28,317,164	(616)	27,906,038	(616)	27,213,841	-	
CP 202901 - UNION DIVISION		98,900,000	-	98,900,000	170,121	13,768,815	676,511	7,923,774	-	
CP 202295 - EL MONTE TRANSIT CTR & PATSOURAS CONNECTOR		60,106,000	-	60,106,000	160,344	4,215,147	264,695	2,867,152	-	
CP 202287 - HARBOR TRANSITWAY IMPROVEMENTS		3,868,210	-	3,868,210	32,145	269,618	23,461	245,801	-	
CP 210115 - BIKE LOCKERS		150,389	-	150,389	-	101,196	-	101,812	-	
CP 210120 - TOLL TECHNOLOGY & ROADWAY IMPROVEMENTS	1	75,200,000	-	111,263,111	548,404	6,442,813	1,103,118	4,664,634	36,063,111	
<b>METRO &amp; CALTRANS TOTAL</b>		<b>262,647,863</b>	<b>-</b>	<b>298,704,974</b>	<b>910,398</b>	<b>52,602,825</b>	<b>2,968,769</b>	<b>43,915,813</b>	<b>36,063,111</b>	
<b>OTHER AGENCIES OR OTHER METRO COSTS:</b>										
METROLINK	POMONA METROLINK STATION - INC PARKING	5	10,815,476	-	10,981,349	36,321	8,217,288	90,805	2,056,539	165,873
METRO	OPERATING SUBSIDY FOR DEMO		6,300,000	-	8,300,000	-	-	-	-	-
FOOTHILL TRANSIT	PROCURE 12 BUSES		7,500,000	-	7,481,000	-	7,278,737	-	187	(39,000)
FOOTHILL TRANSIT	OPERATING SUBSIDY FOR DEMO		3,200,000	-	3,200,000	-	-	-	-	-
TORRANCE TRANSIT	PROCURE 4 BUSES		4,000,000	-	4,000,000	-	4,000,000	-	-	-
TORRANCE TRANSIT	OPERATING SUBSIDY FOR DEMO		1,200,000	-	1,200,000	-	-	-	-	-
GARDENA TRANSIT	PROCURE 2 BUSES		1,200,000	-	1,200,000	-	1,163,043	-	-	-
GARDENA TRANSIT	OPERATING SUBSIDY FOR DEMO		600,000	-	800,000	-	-	-	-	-
LADOT	TRANSIT SIGNAL PRIORITY		1,130,000	-	1,129,561	273,558	491,348	273,558	491,348	(439)
METRO	FACILITY O&M		3,200,000	-	3,200,000	-	-	-	-	-
METRO	VANPOOLS		400,000	-	400,000	-	-	-	-	-
LADOT	EXPRESSPARK		18,500,000	-	18,383,048	18,000	136,000	18,000	136,000	883,049
<b>OTHER AGENCIES OR OTHER METRO COSTS</b>			<b>58,049,476</b>	<b>-</b>	<b>58,054,959</b>	<b>327,879</b>	<b>22,304,414</b>	<b>382,163</b>	<b>2,694,054</b>	<b>1,999,483</b>
<b>TOTAL CRD PROGRAM</b>		<b>2,3</b>	<b>320,697,339</b>	<b>-</b>	<b>357,759,933</b>	<b>1,238,277</b>	<b>74,907,239</b>	<b>2,448,932</b>	<b>48,609,867</b>	<b>37,072,594</b>

NOTE 1: \$75.2M ADOPTED BUDGET INCLUDES \$4.6M IN O&M COSTS.  
NOTE 2: ADOPTED BUDGET OF APPROXIMATELY \$320M IS THE \$290M BOARD APPROVED IN SEP-08 PLUS PARTNER LOCAL MATCH AND OTHER NON-CRD FUNDS TO BE USED IN CRD PROGRAM.  
NOTE 3: CURRENT FORECAST SHOWN REQUIRES BOARD APPROVAL BECAUSE IT EXCEEDS ADOPTED BUDGET. METRO WILL SECURE ADDITIONAL NON-CRD/PA FUNDING SOURCES TO ADDRESS THE SHORTFALL OR REDUCE/DEFER SCOPE.  
NOTE 4: EXPENDITURES ARE CUMULATIVE THROUGH MARCH 31, 2010.  
NOTE 5: POMONA METROLINK STATION FORECAST INCLUDES OPTION FOR 200 PARKING SPACES.



**FINANCIAL/GRANT STATUS – ORIGINAL SCOPE ACTIVITIES**

**METRO EXPRESSLANES PROJECT**  
 (IN MILLIONS OF DOLLARS)

APRIL 2010

**STATUS OF FUNDS BY SOURCE**

PROJECT	FUNDING SOURCES						CURRENT FORECAST	(A) APPROVED BUDGET	TOTAL FUNDS AVAILABLE <small>(exc Local Funds)</small>
	FED CMAQ TRANSIT	FED CMAQ HIGHWAY	FED FTA 5307	STATE SLPP	LOCAL FUNDS	NON CRD FUNDS			
METRO BUS PROCUREMENT	\$0.000	\$0.000	\$23.572	\$0.000	\$4.745	\$0.000	\$28.317	\$28.400	\$23.572
UNION DIVISION	\$0.000	\$0.000	\$0.000	\$0.000	\$0.000	\$95.000	\$95.000	\$80.000	\$17.193
EL MONTE TRANSIT CTR & PATSAOURAS CONNECTOR	\$0.000	\$0.000	\$42.900	\$0.000	\$12.306	\$4.900	\$60.106	\$55.206	\$3.360
HARBOR TRANSITWAY IMPROVEMENTS	\$0.000	\$0.000	\$3.120	\$0.000	\$0.748	\$0.000	\$3.868	\$3.850	\$2.000
BIKE LOCKERS	\$0.000	\$0.000	\$0.040	\$0.000	\$0.104	\$0.006	\$0.150	\$0.144	
TOLL TECHNOLOGY & ROADWAY IMPROVEMENTS	\$0.000	\$26.600	\$0.000	\$20.000	\$26.400	\$36.263	\$109.263	\$73.000	
METRO OPERATIONS & FACILITY O&M	\$6.300	\$3.200	\$0.000	\$0.000	\$0.000	\$0.000	\$9.500	\$9.500	
VANPOOLS	\$0.400	\$0.000	\$0.000	\$0.000	\$0.000	\$0.000	\$0.400	\$0.400	
BUS PROCUREMENT & OPERATIONS (OTHER AGENCIES)	\$5.000	\$0.000	\$11.500	\$0.000	\$0.000	\$1.161	\$17.661	\$16.500	
ADAMS FLYOVER PSR (CALTRANS)	\$0.000	\$0.000	\$0.000	\$0.000	\$2.000	\$0.000	\$2.000	\$2.000	
POMONA METROLINK STATION (BCRRA)	\$0.000	\$0.000	\$4.480	\$0.000	\$1.120	\$5.381	\$10.981	\$5.600	
EXPRESS PARK (LADOT)	\$0.000	\$15.000	\$0.000	\$0.000	\$0.000	\$4.383	\$19.383	\$15.000	\$0.250
TRANSIT SIGNAL PRIORITY (LADOT)	\$0.000	\$1.000	\$0.000	\$0.000	\$0.000	\$0.130	\$1.130	\$1.000	\$0.750
<b>TOTAL FUNDS</b>	<b>\$11.700</b>	<b>\$45.800</b>	<b>\$85.612</b>	<b>\$20.000</b>	<b>\$47.423</b>	<b>\$147.224</b>	<b>\$367.759</b>	<b>\$290.600</b>	<b>\$47.125</b>

(A) Budget approved by Metro Board on September 2006. Expenditures are cumulative through March 2010.

PROJECT	FUNDING SOURCES - ACTUAL EXPENDITURES						TOTAL
	FED CMAQ TRANSIT	FED CMAQ HIGHWAY	FED FTA 5307	STATE SLPP	LOCAL FUNDS	NON CRD FUNDS	
METRO BUS PROCUREMENT (CP 201998):							
EXPENDITURES			\$22.588		\$4.626		\$27.214
BILLED TO FUNDING SOURCE			\$22.588		\$4.626		\$27.212
UNION DIVISION (CP 202001):							
EXPENDITURES						\$7.924	\$7.924
BILLED TO FUNDING SOURCE						\$7.301	\$7.301
EL MONTE TRANSIT CTR & PATSAOURAS CONNECTOR: (CP 202286)							
EXPENDITURES			\$2.294		\$0.573		\$2.867
BILLED TO FUNDING SOURCE			\$2.074		\$0.518		\$2.592
HARBOR TRANSITWAY IMPROVEMENTS (CP 202207):							
EXPENDITURES			\$0.197		\$0.049		\$0.246
BILLED TO FUNDING SOURCE			\$0.188		\$0.047		\$0.235
BIKE LOCKERS (CP 210115):							
EXPENDITURES					\$0.101		\$0.101
BILLED TO FUNDING SOURCE					\$0.000		\$0.000
TOLL TECHNOLOGY & ROADWAY IMPROVEMENTS: (CP 210120)							
EXPENDITURES					\$4.665		\$4.665
BILLED TO FUNDING SOURCE					\$4.160		\$4.160
METRO OPERATIONS & FACILITY O&M:							
EXPENDITURES							\$0.000
BILLED TO FUNDING SOURCE							\$0.000
VANPOOLS							
EXPENDITURES							\$0.000
BILLED TO FUNDING SOURCE							\$0.000
BUS PROCUREMENT & OPERATIONS (OTHER AGENCIES)							
EXPENDITURES						\$0.002	\$0.002
ADAMS FLYOVER PSR (CALTRANS):							
EXPENDITURES							\$0.000
POMONA METROLINK STATION (BCRRA):							
EXPENDITURES						\$2.057	\$2.057
EXPRESS PARK (LADOT):							
EXPENDITURES						\$0.136	\$0.136
TRANSIT SIGNAL PRIORITY (LADOT):							
EXPENDITURES							\$0.491
<b>TOTAL EXPENDITURES</b>	<b>\$0.000</b>	<b>\$0.000</b>	<b>\$25.079</b>	<b>\$0.000</b>	<b>\$10.014</b>	<b>\$10.610</b>	<b>\$45.703</b>

## **PROJECT COST ANALYSIS**

### **Adopted Budget**

The Adopted Budget reflects the Metro Board adopted Life-of-Project (LOP) Budget which was approved in September 2008 in the amount of approximately \$290 million plus partner local match and other Non-CRD Funds to be used in the CRD Program, bringing the total CRD Program Budget to approximately \$320 million.

### **Adopted Budget and Current Forecast**

The Current Forecast of approximately \$358 million (comprised of preliminary estimates) exceeds the Adopted Budget of \$320 million, which will require Board approval. Metro will secure additional Non-CRD/UPA funding sources to address the shortfall or reduce/defer scope.

### **Commitments**

The Commitments increased by \$1.238M this period primarily for Metro and other agency staff charges, and awarding of task orders to miscellaneous design consulting firms.

### **Expenditures**

Expenditures increased by \$2.067M this period primarily for expenditures for design and construction consulting firms, and Metro and Other Agency staff labor charges. The \$45.7 million in Project Expenditures to date represents 14.3% of the Adopted Budget.

## **STATUS OF FUNDS ANTICIPATED**

### **FEDERAL CMAQ:**

Transit Signal Priority (LADOT): \$250,000 of CMAQ funds are available for drawdown.  
Express Park (LADOT): \$750,000 of CMAQ funds are available for drawdown.

### **FEDERAL FTA 5307:**

Metro Bus Procurement: An FTA grant application of \$23.572M (CA-90-Y716) was awarded on July 2, 2009. Funds are available for drawdown.

El Monte Transit Center: An FTA grant application of \$2.160M (CA-90-Y716) was awarded on July 2, 2009. Funds are available for drawdown.

Patsaouras Connector: An FTA grant application of \$1.2M (CA-90-Y716) was awarded on July 2, 2009. Funds are available for drawdown.

Harbor Transitway Improvements: An FTA grant application of \$2.0M (CA-90-Y716) was awarded on July 2, 2009. Funds are available for drawdown.

Bus Procurement and Operations (Other Agencies):

Foothill Transit: Plans to submit in June 2010 a grant application to the FTA for \$7.5M.

Torrance Transit: A grant application for \$2.8M (CA-90-Y715) has been approved and funds are available for drawdown.

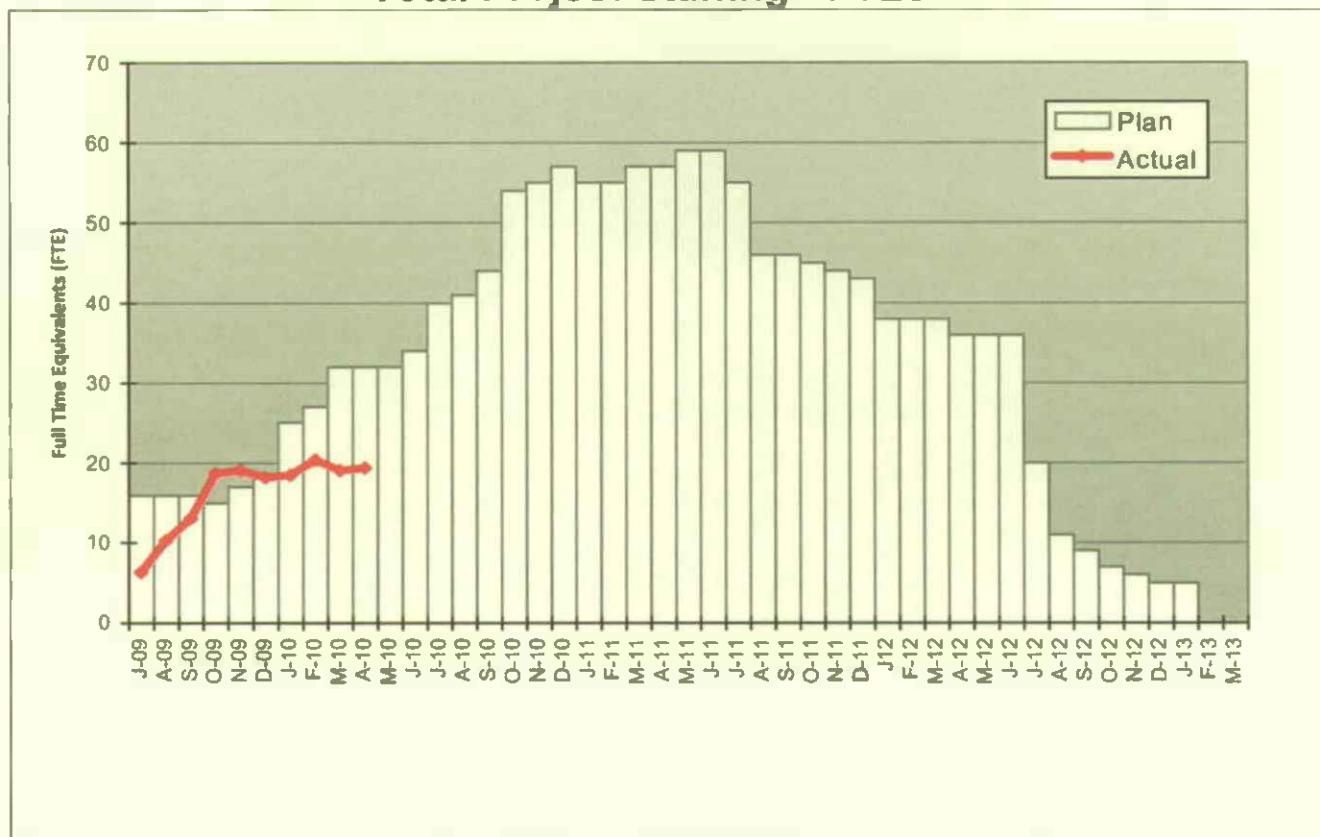
Gardena Transit: A grant application for \$1.2M (CA-90-Y707) has been approved and funds are available for drawdown.

Metrolink: Submitted a grant application (CA-90-Y777) in March 2010 for \$4.7M

### **NON CRD FUNDS:**

Division 13 Proposition 1B Funds: A initial \$4.99M funding request was approved by the State in February 2008. However, Metro's second funding request of \$12.7M has been put on hold pending resolution of the State budget.

**STAFFING STATUS  
Total Project Staffing - FTEs**



**Total Project Staffing**

The Total Project Staffing Plan has been updated to reflect the current plan which includes the El Monte Transit Center, Patsaouras Plaza, Harbor Transitway and Union Division support staff. Actuals have also been retroactively adjusted. The difference in the planned and actual staffing is largely due to the Division 13 Project (formerly the Union Division), which has not been staffed as planned due to a delay in the design effort. The design effort has been extended approximately 4 months while the construction contract procurement process is on hold pending identification of funds.

**REAL ESTATE STATUS**

- Property swap with the City of Alhambra has not been fully executed. Metro's Third Party Manager has been working with City staff and has concluded a verbal agreement. A formal MOU is in progress and will be executed once the environmental documents have been approved. Drawings have been provided to Caltrans which depict the improvements that are required.

**REAL ESTATE STATUS TO DATE**

Number of Parcels	Required	In Appraisal Process	Appraisal Process Complete	Offer Made	Closing	Acquired	Turned Over to Contractor
This Period	0	0	0	0	0	0	0
Last Period	0	0	0	0	0	0	0

## **ENVIRONMENTAL STATUS**

There are eight (8) projects that require environmental approval. The status of each is as follows:

- I-10 and I-110 HOV Conversion to HOT Lanes – EIR/EA. NEPA approval, with a Finding of No Significant Impact (FONSI), was received April 28, 2010. CEQA (Statement of Overriding Considerations) approval expected by the end of May 2010.
- Harbor Transitway Improvements – Listed Categorical Exclusion/Exemption, no approval required.
- El Monte Transit Center Improvements – Categorical Exclusion (NEPA)/Categorical Exemption (CEQA). Submitted September 2009. NEPA approved November 2009. CEQA approved December 2009.
- Patsaouras Plaza Connector – Categorical Exclusion (NEPA)/Categorical Exemption (CEQA). NEPA submitted for approval November 2009 and approved March 30, 2010. CEQA document was submitted in March 2010 and was approved on April 15, 2010.
- Division 13 (Union Division) – Categorical Exclusion (NEPA)/Categorical Exemption (CEQA). CEQA submitted August 2008 and approved September 2008. NEPA submitted and approved in December 2009.
- Transit Signal Priority – Categorical Exclusion (NEPA)/Categorical Exemption (CEQA). NEPA and CEQA approved September 2009.
- ExpressPark – Categorical Exclusion (NEPA)/Categorical Exemption (CEQA). NEPA and CEQA approved October 2009.
- Pomona Metrolink Station Improvements – Categorical Exclusion (NEPA)/Statutory Exemption (CEQA). NEPA and CEQA approved November 2007. FTA requested an update in March 2010 and Metrolink staff is responding to FTA questions.

## **COMMUNITY RELATIONS STATUS**

- During the month of April, 2010, a total of 3 outreach briefings were provided to federal, state, and local elected officials' staff and stakeholders from the City of Los Angeles, San Gabriel Valley and South Bay.
- The total number of project briefings held from April 25, 2008 through April 30, 2010 is 164, as follows:
  - Project stakeholder briefings, technical advisory group meetings, live web chats, and community workshops: 125
  - Legislative briefings: 20
  - Corridor Advisory Group meetings: 11
  - Public hearings: 8

As of the end of April the *ExpressLanes* stakeholder database included 1,668 contacts.

## **QUALITY ASSURANCE STATUS**

- Provided responses to comments received on Specification Section 01460-DB during the Industry Review of the DBOM package.

## **SAFETY STATUS**

- No data available for April 2010.

**THIRD PARTY AGREEMENT STATUS  
THIRD PARTY ADMINISTRATION AGREEMENTS**

Agency	Agreement Type	Purpose	Special Provisions	Funding Amount	Type of Funds	Need Date	Completion Status	For RFP
Caltrans	Cooperative/ Funding Agreement	Outline roles; funding for environmental document and roadway improvements; Funding for Design/Construction Oversight and balance of Environmental Document	Includes Caltrans Review/ Approval Deadlines	TBD	Capital	5/14/10	In Process	Yes
Caltrans	Encroachment Permit				Capital	5/13/10	In Process	Yes
City of Alhambra	MOU	I-10 Widening at Ramona Rd.			Capital	5/14/10	In Process	Yes
Expo	MOU	Overcrossing at Adams to Exposition			Capital	5/14/10	In Process	Yes
LADWP	Electrical Service Agreement	Drops by PB/IBI Application Only			Capital	As required		No
So Cal Edison	Electrical Service Agreement*	Drops by PB/IBI Application Only			Capital	As required		No
City of Los Angeles	Amendment to Master Cooperative Agreement	Design Review for Adams Blvd. and POC		TBD	Capital	5/31/10		Yes
County of Los Angeles	Amendment to Master Cooperative Agreement	Design Review		TBD	Capital	As required		No
SCRRA	MOU	Design Review		TBD	Capital	5/31/10		Yes

**AGENCY NOISE AGREEMENTS**

Agency	Agreement Type	Purpose	Special Provisions	Funding Amount	Type of Funds	Need Date	Completion Status	For RFP
City of Alhambra	MOU	I-10 Widening at Ramona Rd.			Capital	5/14/10	In Process	Yes
City of Los Angeles	Nighttime and Weekend Variance	Includes POC Bridge at Adams Blvd.			Capital	5/14/10	In Process	Yes
City of Monterey Park		Freeway Median Area	City Variance Not Required			N/A		N/A
City of Rosemead		Freeway Median Area	City Variance Not Required			N/A		N/A
City of El Monte		Freeway Median Area	City Variance Not Required			N/A		N/A
City of Baldwin Park		N/A	No Work in this Jurisdiction			N/A		N/A



**INTEROPERABILITY AGREEMENTS**

Agency	Agreement Type	Purpose	Special Provisions	Funding Amount	Type of Funds	Need Date	Completion Status	For RFP
Bay Area Toll Authority	User Fee Agreement	User Fee (Title 21 Interoperability)		\$0	Operating	By PDR	Not Started	No
Golden Gate Bridge, Highway & Transportation District	User Fee Agreement	User Fee (Title 21 Interoperability)		\$0	Operating	By PDR	Not Started	No
Orange County Transportation Authority	User Fee Agreement	User Fee (Title 21 Interoperability)		\$0	Operating	By PDR	Not Started	No
San Diego Association of Governments	User Fee Agreement	User Fee (Title 21 Interoperability)		\$0	Operating	By PDR	Not Started	No
SR125 Southbay Expressway, Chula Vista	User Fee Agreement	User Fee (Title 21 Interoperability)		\$0	Operating	By PDR	Not Started	No
TCA	User Fee Agreement	User Fee (Title 21 Interoperability)		\$0	Operating	By PDR	In Process	No

**OPERATIONS AND MAINTENANCE AGREEMENTS**

Agency	Agreement Type	Purpose	Special Provisions	Funding Amount	Type of Funds	Need Date	Completion Status	For RFP
Caltrans	Cooperative Agreement	Outline roles for operations and maintenance of HOT Lanes		\$0	Operating	5/14/10	In Process	Yes
Caltrans	Joint Use Agreement				Operating	By PDR		No
CHP	MOU	Dedicated Enforcement: 4 vehicles	Data Collection Requirement	\$500,000 CMAQ or Toll Revenues	Operating	By PDR	In Process	No
DMV	Requestor Account	Allows access to DMV records	None	\$250	Operating	By PDR	Not Started	No
USDOT	Tolling Agreement	Comply w/USC 166	On hold re: Use of toll revenues for buses	\$0	Operating		In Process	No
TCA	License Agreement	FasTrak Logo license	None	\$1	Operating	5/14/10	In Process	Yes
MTA	FSP Agreement	Amend FSP Agreement for dedicated trucks			Operating	4 months before opening	Not Started	No
MTA	Collection Agency Agreement				Operating		Not Started	No
MTA	MOU	Non Revenue Usage MOUs	Required for various agencies		Operating	2 weeks before usage	Not Started	No
MTA	Welcome Package	Materials needed for new Customer Welcome Package			Operating	4 months before opening	Not Started	No

**Metro LA CRD (ExpressLanes) Project  
Monthly Project Status Report**

**April 2010**

**FUNDING AGREEMENTS**

Agency	Agreement Type	Purpose	Special Provisions	Funding Amount	Type of Funds	Need Date	Completion Status	For RFP
Caltrans	Cooperative Agreement	Initial Study for Environmental Document		\$200,000 Prop C	Capital		Executed June 2009	No
Foothill Transit Agency	LOA	Purchase 10 42' buses and funding for 1 year operating subsidy	Data Collection Requirement	\$7,461,000 FTA 5307 \$3,200,000 CMAQ	Capital and Operating		Executed August 2009	No
Foothill Transit Agency	LOA – Amendment #1	Purchase of 2 additional buses	No Additional Operating Subsidy	\$7,461,000 FTA 5307 \$3,200,000 CMAQ	Capital and Operating		Executed November 2009	No
Gardena Municipal Bus Lines	LOA	Purchase 2 gas/hybrid buses and funding for 1 year operating subsidy	Data Collection Requirement	\$1,200,000 FTA 5307 \$580,187 CMAQ	Capital and Operating		Executed September 2009	No
Torrance Transit	LOA	Purchase 4 buses and funding for 1 year operating subsidy	Data Collection Requirement	\$2,800,000 FTA 5307 \$1,160,373 CMAQ	Capital and Operating		Executed July 2009	No
Los Angeles Department of Transportation	LOA	Intelligent Parking Management Program	Data Collection Requirement	\$15,000,000 CMAQ	Capital		Executed August 2009	No
Los Angeles Department of Transportation	LOA	Install Transit Signal Priority in Downtown Los Angeles	Data Collection Requirement	\$1,000,000 CMAQ	Capital		Executed August 2009	No
Southern California Regional Rail Authority	LOA	Construct 100 parking spaces and expand platform at the Metrolink Pomona Station	Data Collection Requirement	\$4,480,000 FTA 5307 \$1,120,000 Prop C 10%	Capital		Executed August 2009	No
USDOT	MOU	Award CRD funding for I-10 and SR-210 Demonstration Project	Tolling Authority Required by 10/15/08; Revenue Operations by 12/31/10	\$213.6 Million FTA 5309	Capital		Executed April 2008	No
USDOT	MOU – Amendment #1	Shift from SR-210 to I-110 and I-10 Demonstration Project	Tolling Authority Required by 10/15/08; Revenue Operations by 12/31/10	\$210.6 Million FTA 5309	Capital		Executed July 2008	No
USDOT	MOU – Amendment #2	Administrative Amendment/ Reconcile MOU with Tolling Authority Legislation	Capacity Improvements by 12/31/08; Revenue Operations by 12/31/10	\$210.6 Million FTA 5309	Capital		Executed November 2008	No
USDOT	MOU – Amendment #3	Amendment #3 for Schedule Extension		\$210.6 Million FTA 5309	Capital	5/31/10	In Process	No

**DBOM CONTRACTOR RESPONSIBILITY**

Agency	Agreement Type	Purpose	Special Provisions	Funding Amount	Type of Funds	Need Date	Completion Status	For RFP
FCC	License Agreement	Needed for Operation of Fastrak Transponders?	DBOM Contractor to secure					No
TBD	Maintenance Agreement	Toll Electrical and Equipment Maintenance	DBOM Contractor to secure					No
TBD	Facility Lease	Needed for Customer Service Center	DBOM Contractor to secure					No
TBD	Credit Card/Bank Processing Agreements		DBOM Contractor to secure					No
TBD	Website Hosting Agreement		DBOM Contractor to secure					No
TBD	Phone/Internet Service Agreement		DBOM Contractor to secure					No
TBD	Mail Processing Agreement		DBOM Contractor to secure					No
TBD	Armored Car Service Agreement		DBOM Contractor to secure					No

## **CHRONOLOGY OF EVENTS**

April 24, 2008	MOU w/USDOT for \$210 million Grant Award (I-210/I-10).
July 23, 2008	CTC Eligibility Finding.
July 24, 2008	1 <sup>st</sup> Amendment to MOU w/USDOT (Changes Demo Project from I-210/I-10 to I-110/I-10).
August 24, 2008	Preliminary Concept of Operations for I-10 and I-110.
September 28, 2008	State Tolling Authority Legislation Approved (Expires 1/15/13).
September 29, 2008	Metro/Caltrans certify funding available for ExpressLanes.
November 24, 2008	2 <sup>nd</sup> Amendment to MOU w/USDOT (administrative changes).
December 4, 2008	ExpressLanes Project Inclusion in RTP approved.
December 22, 2008	Key Physical Capacity Improvements identified to USDOT.
January 14, 2009	FTIP approved: Amend #1 to the RTP and Amend 08-01 to 2008 RIP.
January 22, 2009	Public Outreach & Communications Plan approved by Metro Board.
February 17, 2009	RFIQ for Toll Systems Integrator released.
April 15, 2009	Preliminary Engineering begins for Electronic Toll Collection.
May 4, 2009	Short List of Toll Systems Integrator Firms completed.
June 22, 2009	Public Hearings for Toll Rates (6).
July 23, 2009	Toll Rates and Toll Policy adopted.
January 20, 2010	Metro Board Approved USDOT National Evaluation Plan.
February 12, 2010	Circulation of the Draft EIR/EA for the the I-10 and I-110.
March 9 & 10, 2010	Public hearings held for the draft EIR/EA for I-10 and I-110.
March 25, 2010	Metro Board Approved Low Income Commuter Assessment.

## **CHRONOLOGY OF EVENTS**

- |                |  |
|----------------|--|
| April 7, 2010  | CTC Authorizes Design-Build Authority for I-10 and I-110 HOT Lanes.                              |
| April 22, 2010 | Metro Board Approved Administrative Account Fee Schedule.  |
| April 28, 2010 | EIR/FONSI for the I-10 and I-110 HOT Lanes is approved.<br>Project Oversight Agreement Executed. |

## **APPENDICES**

### **COST AND BUDGET TERMINOLOGY**

**ADOPTED BUDGET:** The Approved Project Budget as established by Metro Board of Directors at the time it authorizes Construction Project Management Division to commence full design and construction of the project (Project Adoption).

**CURRENT FORECAST:** Evaluation of costs to go combined with actual expenditures.

**COMMITMENTS:** The total of actual contract awards, executed change orders or amendments, approved work orders of Master Cooperative Agreements, offers accepted for purchase of real estate, and other Metro actions which have been spent or result in the obligation of specific expenditures at a future time. Also includes commitments reported by other agencies.

**EXPENDITURES:** The total dollar amount of funds expended by Metro for contractor or consultant invoices, third party invoices, staff salaries, real estate and other expenses that is reported in Metro's Financial Information System (FIS and expenditures reported by other agencies.

**APPENDIX**  
**LIST OF ACRONYMS**

ARRA	American Recovery & Reinvestment Act
AWIS	Automated Work Zone Information Systems
BRT	Bus Rapid Transit
CADD	Computer Aided Drafting and Design
CALTRANS	California Department of Transportation
CCTV	Closed Circuit Television
CD	Calendar Day
CDFG	California Department of Fish and Game
CM	Construction Manager
CMAC	Congestion Mitigation Air Quality
CMIA	Cash Management Improvement Act
CMS	Changeable Message Signs
CN	Change Notice
CNG	Natural Gas
CO	Change Order
COE	Corps of Engineers
COLA	City Of Los Angeles
CONOPS	Concept of Operations
CPM	Critical Path Method
CPUC	California Public Utilities Commission
CR	Camera Ready
CRD	Congestion Reduction Demonstration
CTC	California Transportation Commission
D-B	Design-Build
D-B-B	Design-Bid-Build
DBOM	Design, Build, Operate and Maintain
DD	Design Development
DEIR	Draft Environmental Impact Report
DWP	Department of Water and Power
EA	Environmental Assessment
EIR	Environmental Impact Report
EIS	Environmental Impact Statement
FD	Final Design
FEIR	Final Environmental Impact Report
FHWA	Federal Highway Administration
FIS	Financial Information System
FOCT	Fiber Optics Cable Transmission System
FTE	Full Time Equivalent
GDSR	Geotechnical Design Summary Report
GSA	General Services Administration
GSRD	Gross Solids Removal Devices
HAR	Highway Advisory Radio

**APPENDIX  
LIST OF ACRONYMS (Continued)**

HOT	High Occupancy Toll
HOV	High Occupancy Vehicle
IFB	Invitation for Bid
IPO	Integrated Project Office
ITS	Intelligent Transportation Systems
LA	Los Angeles
LABOE	Los Angeles Bureau of Engineering
LACFCD	Los Angeles County Flood Control District
LADOT	Los Angeles Department of Transportation
LADPW	Los Angeles Department of Public Works
LADWP	Los Angeles Department of Water and Power
LARTMC	Los Angeles Regional Transportation Management Center
LFAT	Local Field Acceptance Test
LNTP	Limited Notice To Proceed
LONP	Letter Of No Prejudice
LOP	Life of Project
MCA	Master Cooperative Agreement
METRO	Los Angeles County Metropolitan Transportation Authority
MIS	Major Investment Study
MOT	Maintenance of Traffic
MOU	Memorandum of Understanding
MPSR	Monthly Project Status Report
MVDS	Microwave Vehicle Detection System
MVP	Maintenance Vehicle Pullouts
MWD	Metropolitan Water District
N/A	Not Applicable
NEPA	National Environmental Protection Act
NHS	National Highway System
NOA	Notice of Award
NTE	Not to Exceed
NTP	Notice To Proceed
NTSC	National Television System Committee
P6	Primavera Project Planner® (scheduling software)
PC	Project Control
PE	Preliminary Engineering
PIP	Project Implementation Plan
PM	Project Manager
PMA	Project Management Assistance
PMP	Project Management Plan
P&P	Policies & Procedures
PR	Project Report
PS&E	Plans, Specs & Engineering



**APPENDIX  
LIST OF ACRONYMS (Continued)**

PSR	Project Study Report
QA	Quality Assurance
QAR	Quality Assurance Report
QC	Quality Control
QPSR	Quarterly Project Status Report
RFC	Request For Change or Released for Construction (based on context)
RFP	Request For Proposal
RMS	Ramp Metering Systems
ROM	Rough Order of Magnitude
ROW	Right-Of-Way
SIT	System Integration Testing
RSTP	Regional Surface Transportation Program
RWQCB	Regional Water Quality Control Board
SAFETEA- LU-	Safe, Accountable, Flexible, Efficient Transportation Equity Act: A Legacy for Users
SCE	Southern California Edison
SEMP	Systems Engineering Management Plan
SONET	Synchronous Optical Network
SOV	Single Occupant Vehicle
SOW	Statement Of Work
SP	Special Provision
TBD	To Be Determined
TCRP	Traffic Congestion Relief Program
TMS/CS	Traffic Monitoring Stations/Count Stations
TPM	Transportation Management Plan
UPS	Uninterrupted Power Supply
USDOT	United States Department of Transportation
VE	Value Engineering
WBS	Work Breakdown Structure
WP	Work Package