

METRO LA CRD (ExpressLanes) PROJECT

MONTHLY PROJECT STATUS REPORT

THE PREPARATION OF THIS DOCUMENT HAS BEEN FINANCED IN PART THROUGH A GRANT FROM THE U. S. DEPARTMENT OF TRANSPORTATION, FEDERAL TRANSIT ADMINISTRATION (FTA).

MAY 2010

TABLE OF CONTENTS

	Page No.
Project Overview & Status.....	1-3
Management Issues.....	4-5
Project Status	
• Project Scope.....	6-9
• Schedule	
○ Key Milestones Six-Month Lookahead	10
○ Project Summary Schedule	11
○ Critical Path Narrative.....	12
• Project Cost Status/Financial/Grant Status.....	13-16
• Staffing.....	17
• Real Estate.....	18
• Environmental.....	19
• Community Relations.....	20
• Quality Assurance.....	20
• Safety.....	20
• Third Party.....	21-24
Chronology of Events.....	25-26
LA CRD Pre-Deployment Data Collection.....	27
Appendices.....	28-31

PROJECT OVERVIEW & STATUS

Metro, Caltrans, and other mobility partners are working together to develop a package of solutions that will increase traffic flow and provide better travel options on I-10 and I-110 in Los Angeles County. ExpressLanes is a one-year demonstration project that will test innovations to improve existing transportation systems in three sub-regions: the San Gabriel Valley, Central Los Angeles and the South Bay Cities. These three sub-regions represent nearly 50 percent of both population and employment in LA County.

The Project Goal is to improve mobility and provide congestion relief on I-10 and I-110 corridors through the introduction of congestion pricing by converting High Occupancy Vehicle (HOV) lanes to High Occupancy Toll (HOT) lanes, improvement of transit service and other alternatives to driving, improvements to transit facilities, and the implementation of an intelligent parking management system in downtown Los Angeles.

This project offers improved transportation options and a choice for drivers of single occupant vehicles (SOV) to pay to travel in a carpool lane. The minimum toll per mile is \$0.25 and the maximum toll per mile is \$1.40. The general purpose lanes will not be tolled. An additional aim of the program is to foster incentives for sustainable change that creates travel time savings, increased trip reliability, cost savings, improves air quality and effectively manages our current roadway network.

The federal grant name for this Project is the Los Angeles County Congestion Reduction Demonstration (LA CRD). It is estimated that more than 2,400 construction-related jobs will be generated by this project.

PROJECT MANAGEMENT

Based upon earned value, the Project is 14.4% complete. Staff continues to work with Caltrans to address potential issues of conflict which may arise as a result of work they are currently performing related to the I-10 Rehab project. Staff is reviewing existing contracts and their status in order to manage any risk to our ExpressLanes project.

TOLL INFRASTRUCTURE AND FREEWAY/ROADWAY IMPROVEMENTS

This element is currently in the Environmental and Preliminary Design phases. Caltrans is the lead agency for the NEPA and CEQA Environmental Documents. On April 28, 2010, the Final EIR/FONSI for the I-10 and I-110 HOT Lanes was approved. On May 14, 2010 the Environmental Assessment was approved.

PB, our consultant for the Preliminary Engineering phase, continues to focus on the 30% design package as well as the preparation of the Statement of Work and other documents related to the Design, Build, Operate and Maintain (DBOM) RFP. We are targeting the first week of June to advertise the DBOM RFP.

Staff continues to work with FTA/FHWA partners regarding the need for a schedule extension in order to ensure that the roadway improvements are completed prior to opening the HOT Lanes. Current estimates anticipate the need for a 19-month extension which would shift the opening date from December 31, 2010 to August 1, 2012.

PROJECT OVERVIEW & STATUS (Contd)

On February 25, 2010 the Metro Board approved amending the existing MOU with USDOT to extend the deadline for the conversion of the HOV lanes on the I-10 and I-110 to HOT lanes for up to 19 months to allow for the completion of the roadway improvements. Assemblymember Mike Eng agreed to author AB1224 which would extend Metro's tolling authority until January 2015. In June, AB1224 will be voted on in the Senate Transportation and Housing Committee.

TRANSIT SERVICE IMPROVEMENTS

59 new clean-fuel buses will be operated to support the demonstration project. Metro continues to operate its new Silver Line service connecting passengers to the El Monte and Artesia Transit Centers. Revenue Operations have been pushed back to December 2011 to reflect the projected opening of the Harbor Transitway in August 2012. For the month of May, the Silver Line weekday boardings total was 7,422 which represents a 12.25% increase in ridership since the Silver Line started service in December 2009.

Both Gardena and Foothill have placed the order for their buses and will be receiving them later this year. Torrance will be going to their City Council in June to seek approval of a P.O. to order their buses.

LADOT completed Preliminary Engineering (PE) of all 19 intersections at the end of February. Staff continues to work on the bid package in preparation of a June 2010 release date. LADOT is awaiting approval of the E-76 for Construction funds that was submitted to Caltrans in April. Construction is scheduled to start in August 2010.

TRANSIT FACILITY IMPROVEMENTS

El Monte Transit Center – Continued coordination with the Gas Co. for relocating a 20" gas main. Completed construction at Power Chevrolet; Completed demolition of the Metro Transportation Building & completed paving at the site. Completed construction for Contract C0934R for Demo, Repave and Lighting Installation over the former Old Transportation Bldg. Received 8 technical D/B proposals for Contract C0958 El Monte Station D/B construction. Four (4) price bids were opened 03/15/10. Staff determined the option selections for the apparent low bid. Notice of Intent to award was issued 03/23/10 - contract award forecast date has slipped to Jun 25, 2010. Procurement has received & is addressing the NOI protests. Contract C0959 for the temporary terminal was awarded to S.H.E for \$657K with NTP issued April 20, 2010; construction completion is anticipated for August 2010.

Patsaouras Plaza – Continued advanced conceptual engineering efforts. Design charettes with stakeholders (including Metro, Caltrans, FHWA, FTA, and ProLogis) were held January 26-27, 2010. Engaged consultant to prepare PR/PSR reports for Caltrans approval, and continued coordination with Caltrans disciplines. Final concept has been developed but requires additional refinements. Conceptual design alternatives were developed and reviewed March 9, 2010. 65% ACE were submitted with Metro comments due back May 21, 2010. ACE Completion slipped out to Jun 15, 2010 from May 06, 2010. Additional coordination with High Speed Rail project required to reduce potential future design and construction conflicts.

PROJECT OVERVIEW & STATUS (Contd)

Harbor Transitway – This project will have at least 6 procurements. The low bid at \$547K was awarded to Minco Construction for the Artesia Law Enforcement substation & CCTVs. The low bid at \$443K was awarded to Lime Inc for the Station lighting & UPS. Procurement activities remain ongoing for the bus stop cutouts. Two bids were submitted for the sound attenuation pilot test project at a greater value than originally estimated. Staff is evaluating the bids for possible re-bid or award at the lowest bid. Project management is still coordinating with staff for the CCTVs and signage/way-finding work scope.

Division 13 Facility – The design team continues to progress in completion of the final design, and a 90% complete submittal was submitted to Metro January 15, 2010. City of Los Angeles approved the vacation of Lyon Street. Conducted a third party review of the 90% submittal January 18-22, 2010. Metro Engineering reviewed the 90% submittal and was rejected. An interim 95% submittal was developed and submitted April 26, 2010. Metro review is ongoing. 100% Design is anticipated by June 14, 2010 with the final submittal expected June 24, 2010.

Pomona Metrolink Station – At the end of May, the Contractor opened 180 new parking spaces east of the existing parking spaces for a total of 410 spaces now available. MT-1 was realigned to facilitate the center platform widening and extension. Construction of the platform extension continues. Construction of the temporary platform continues. CE submitted to Jonathan Klein of FTA on Friday May 21, 2010.

DEMAND-BASED PARKING PRICING (EXPRESSPARK)

Received FHWA approval on the technical matters in the ExpressPark Project Plan. Caltrans has given informal approval of the Project Plan. On May 6, 2010, LADOT was notified by Caltrans that the E-76 must be approved before the RFP can be advertised. This notification was contrary to previous informal guidance that indicated the RFP could be released but the winning proposal could not be announced until the E-76 was approved. This change in procedure will cause a minimum 30 day delay in the schedule. Caltrans has agreed to LADOT's request to reprogram all of the remaining federal funds as PE 2. Finally, LADOT is waiting for a decision from FHWA as to whether they have to approve the RFP before it is released.

MANAGEMENT ISSUES

Concern No. 1: Caltrans Cooperative Agreement for ExpressLanes

Status/Action Metro continued to review Caltrans revisions throughout the month of May. It is anticipated that execution of the Agreement will occur in the month of June.

Concern No. 2: Review of the 30% Design Package and Finalization of the RFP Documents

Status/Action Metro and Caltrans reviewed minor portions of the RFP document. Designers and team members met on several occasions to address needed revisions of the package. Metro is proceeding on the basis of obtaining concurrence from FHWA to advertise within the 1st week of June. The concurrence from FHWA will allow Metro to issue the RFP with the understanding that addenda will follow during the bid period to clarify any additional scope elements that were not fully developed at the time the RFP was released and to show approval of the Fact Sheets.

Concern No. 3: Project Risk Register

Status/Action The major project risks to schedule continue to be the approval of the Fact Sheets by Caltrans and FHWA and advertisement of the DBOM RFP. During the month of May meetings were held with all members of the project team in an effort to work thru the issues which clearly appear to be show stoppers in obtaining approval of the fact sheets. Goals have been established and plans are now in place which will allow FHWA to allow the advertisement of the project with stipulations. The project is now scheduled to advertise on June 3rd 2010. Metro, Caltrans, P.B. and FHWA will be reviewing the revised Fact Sheets which will be resubmitted within the 1st week of June and have all agreed to find workable minimal acceptable solutions to the situations at the various stations which are part of the entire alignment of the project. It is agreed by all parties these items will be subsequently addressed in addenda to the initial RFP document. The Risk Register will be updated and delays in the issuance of the RFP will be incorporated as will actual delays to the project be incorporated into the project Baseline Schedule.

Concern No. 4: Real Estate

Status/Action **CLOSED.** In review of the overall problems associated with the "Fremont Funnel Area", just east of the I-710 Freeway, Metro has determined that it will not be performing any additional widening in that section therefore, the property swap with Alhambra is no longer needed.

MANAGEMENT ISSUES (Contd)

Concern No. 5: Tolling Agreement

Status/Action Tolling agreement with USDOT has not been finalized. Draft language is currently under review by USDOT.

Concern No. 6: Project Management Plan (PMP)

Status/Action The Project Management Plan (PMP) has not been finalized. The PMP is under internal review by Executive staff. The document is expected to be finalized by June 2010.

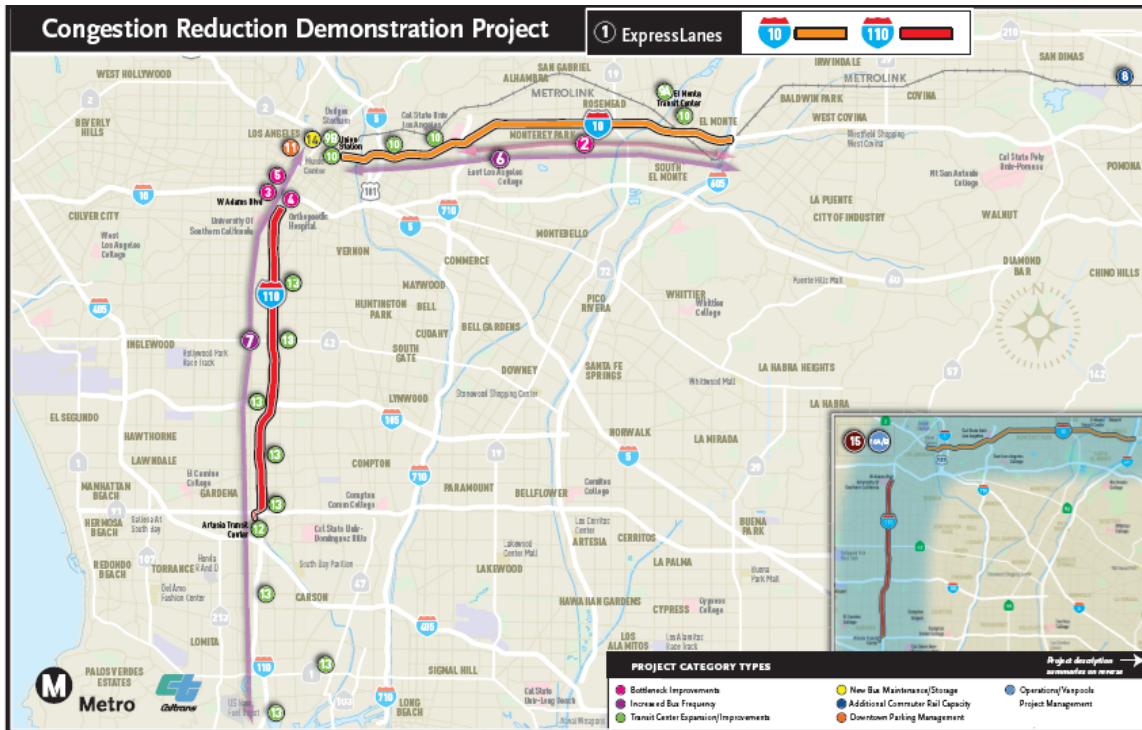
Concern No. 7: Project Oversight Agreement (POA)

Status/Action **CLOSED.** POA was executed April 28, 2010.

Concern No. 8: Budget Increase

Status/Action Latest preliminary estimates for the toll infrastructure and freeway/roadway improvements exceed the current approved project budget. Metro will secure additional Non-CRD/UPA funding sources to address the shortfall or reduce/defer scope.

PROJECT SCOPE



Los Angeles County Metropolitan Transportation Authority and Caltrans have partnered with Foothill Transit, Gardena Municipal Bus Lines, Los Angeles Department of Transportation, Southern California Regional Rail Authority (Metrolink) and Torrance Transit, to develop a package of solutions to increase traffic flow and provide travel options on the I-10 and I-110 freeways in Los Angeles County. These solutions will be incorporated into a one-year demonstration that will test new technologies to improve the existing transportation system called ExpressLanes.

The project goal is to improve mobility and provide congestion relief on the I-10 and I-110 freeways through the introduction of congestion pricing by converting High Occupancy Vehicle (HOV) Lanes to High Occupancy Toll (HOT) Lanes, improvements to the transit service along the freeways, transit facility improvements, increased funding for vanpools and the introduction of an intelligent parking management program, called ExpressPark, in downtown Los Angeles.

This project offers improved transportation options and a choice for drivers of single occupant vehicles (SOV) to pay to travel in a carpool lane. The general purpose lanes will not be tolled. The aim of the program is to foster incentives for sustainable change that creates travel time savings, increased trip reliability, cost savings, improved air quality and effectively manages our current roadway network.

PROJECT SCOPE (Contd)

The features of the ExpressLanes project include:

1) TOLL INFRASTRUCTURE AND FREEWAY/ROADWAY IMPROVEMENTS

- **I-10 HOV Conversion to HOT Lanes (I-605 to Alameda St./Union Station) and I-110 HOV Conversion to HOT Lanes (Artesia Transit Center to Adams Blvd.)** – an electronic toll collection system will be constructed that includes toll infrastructure, changeable message and static signage, transponders, cameras, back-office administration and management, CHP enforcement, and incident management response.
- **Add 2nd HOT Lane on I-10 (between I-605 and I-1710)** – a 2nd HOT lane will be added on the I-10 between I-605 and I-710 in both the eastbound and westbound directions. This will be accomplished by re-stripping the existing enforcement zone buffer and minor roadway widening.
- **Widen Adams Blvd. and Lane Modifications to Adams Blvd Off-Ramp** – modifications at Adams Blvd. include re-configuration to include two dedicated left turn lanes and one dedicated right turn lane. Widening of Adams Blvd. will require the sidewalk to be taken to add an additional dedicated right turn in the westbound direction. To replace the sidewalk, a pedestrian over-crossing will be constructed over the I-110 freeway on the north side of Adams Blvd.
- **Project Study Report (PSR): Adams Blvd.-Figueroa St. HOT Lane Flyover** – funding will be provided to Caltrans to perform a PSR to identify alternatives to connect from the northbound I-110 HOT Lanes to Figueroa St. The PSR will be coordinated with the Harbor Freeway Cap Park Feasibility Study lead by the City of Los Angeles.

2) TRANSIT SERVICE IMPROVEMENTS

- **Enhanced Silver Line BRT and Feeder Services** – Funding will be provided to Metro for 41 new CNG buses to enhance service on the I-10 and I-110 and create a new dual-hub BRT. In addition, Foothill Transit will deploy 12 new buses, Gardena Transit will deploy 2 new gas-hybrid buses and Torrance Transit will deploy 4 new buses to improve additional commuter bus service on both the I-10 and I-110. During the 1-year Demonstration period, Foothill, Torrance and Gardena will also receive an operating subsidy for their expanded service.
- **Transit Signal Priority in Downtown Los Angeles** – The LADOT will install bus signal priority technology on Figueroa St. between Wilshire Blvd. and Adams Blvd. (15 signals) and Flower St. between Wilshire Blvd. and Olympic Blvd. (5 signals) to enhance transit operations. This project will also extend the existing AM peak-period northbound bus-only lane on Figueroa St. to cover the PM peak-period.

PROJECT SCOPE (Contd)

- **Vanpools** – Activities to support the formation of 100 new vanpools include marketing and vanpool start-up costs such as training community groups to form commuter vanpools and ensure that vanpools are created and retained, ride-matching software, driver (or other empty seat subsidies), back-up driver training exams and parking lot leases.

3) TRANSIT FACILITY IMPROVEMENTS

- **El Monte Transit Center Improvements** – a new 30-bay bus terminal will be constructed at the current El Monte Transit Center location to accommodate service improvements and expansion. This will add capacity for Metro’s dual-hub BRT service and Foothill’s Silver Streak service and will be LEED Gold Certified.
- **Patsaouras Plaza Connector to the El Monte Busway** – the existing passenger boarding/alighting areas located at the corner of Alameda St. and the Busway entrance will be relocated to the south side of Patsouras Plaza to allow direct pedestrian access to the Plaza and Union Station.
- **Division 13 (formerly Union Division)** – a new bus operations and maintenance facility will be constructed adjacent to Metro headquarters. This new facility will house and operate a mixed fleet of approximately 200 CNG buses and will be built to accommodate 40-foot, 45-foot and 60-foot articulated buses. It will also include bus and automobile parking, administrative offices, a maintenance shop and all associated maintenance equipment and will be LEED Silver Certified.
- **Harbor Transitway Park and Ride Improvements** – improvements will include enhanced signage, lighting and security at 8 Park and Ride lots. A Sheriff’s Substation will be constructed at Artesia Transit Center. New bike lockers will be installed and bus stops will be re-located for lines 108 and 115 so that they are under the Slauson and Manchester Transitway stations. And at the 37th Street Station translucent and architectural sound attenuation panels will be installed to reduce noise levels for waiting customers on the Harbor Transitway. Design of the panels is based on noise testing and analyses conducted by noise experts, the architecture of the station and Caltrans requirements. Before and after noise data will be collected to evaluate whether or not additional sound attenuation projects are implemented in the future at other freeway adjacent stations.
- **Pomona Metrolink Station Expansion** – this project consists of new pedestrian access improvements, 100 new parking spaces and the extension of the platform to accommodate additional rail cars at the Pomona (North) Metrolink Station that serves the San Bernardino Line. Operation of extended trains is projected to begin sometime in early 2011 on the San Bernardino Line.

4) DEMAND-BASED PARKING PRICING

- **ExpressPark** – the LADOT will deploy new parking meter technology to 5,500 on-street metered parking spaces in the Central Business District, Chinatown, Civic Center, East Downtown, Little Tokyo and Washington/Broadway. These new meters

PROJECT SCOPE (Contd)

will charge demand-based parking rates depending on the time of day and length of stay. They will also provide alternative payment options (i.e. credit card, cell phone). In addition to the on-street meters, occupancy reporting systems will also be implemented for the major City-owned off-street parking facilities (approx 7,500). Real-time parking information for 13,000 public on- and off-street parking spaces will be provided through various media including: websites, mobile phones, and on-street dynamic message signs.

KEY MILESTONE SCHEDULE SIX-MONTH LOOKAHEAD

	Milestone Date	May-10	Jun-10	Jul-10	Aug-10	Sep-10	Oct-10
HOT Lane Project							
MTA Board Approval of EIR	05/27/10	M Metro					
Advertise DBOM RFP	06/04/10		M Metro				
FHWA Approve Fact Sheets	06/11/10		FHWA				
Final addendum	08/03/10				M Metro		
Bidders Prepare Proposals	08/24/10				○		
Evaluate & Rank Proposals for Competitive Range	09/08/10					M Metro	
Oral Interview	09/20/10					M Metro	
Negotiate with Proposers in Competitive Range	10/25/10						M Metro
Transit Facilities Improvement							
Division 13 - New Construction							
Terminal 31 Ready for Demo / Grading	05/28/10	M Metro					
Metro 100% Design Review	06/22/10		M Metro				
Renderings for Construction Procurement	06/29/10		M Metro				
Metro Board Approval of DBOM Contract	07/30/10			M Metro			
Metro Prepare DBB Construction Bid Package	08/13/10				M Metro		
Bidders Prepare Proposals	10/13/10						○
Harbor Transit Way Improvement							
Issue NTP Artesia	05/28/10	M Metro					
Advertise Construction Contract(s)	05/20/10	M Metro					
Issue NTP Lighting & UPS	06/07/10		M Metro				
Award 37th St Sound Enclosure	07/30/10			M Metro			
Issue NTP Sound Enclosure	08/20/10				M Metro		
Advertise/Bid Eval/Award: Bus Stop Cutouts	10/20/10						M Metro
El Monte Transit Center							
Advertise DB Contract	05/28/10	M Metro					
Award DB Contract	06/25/10		M Metro				
Issue NTP DB Contract	07/12/10			M Metro			
Pastouras Plaza							
Advertise DB Contract	07/30/10			M Metro			
DB Bids Due & Evaluation	10/29/10						M Metro
Award DB Contract	09/17/10						M Metro

Metro Milestone
 Design/Build
 Third Parties Approval
 Caltrans Milestone
 * New Date
 FTA/FHWA
 Federal Transit Administration/
 Federal Highway Administration

PROJECT SUMMARY SCHEDULE

Activity Name		ExpressLanes Project Phase Opening												
Activity ID	Activity Name	Orig. Dur.	Rem. Dur.	Start	Finish	2010		2011		2012		2013		2014
						Q1	Q2	Q3	Q4	Q1	Q2	Q3	Q4	Q1
	ExpressLanes Project Phase Opening	1825	879	Apr-04-06 A	Oct-09-13									
	Community Outreach	1073	852	Jun-08-09 A	Oct-09-13									
	I-10 & I-110 HOT Lanes	839	539	Apr-03-09 A	Jun-20-12									
	EIR Preparation and Approval	243	25	Jun-01-09 A	Jul-02-10									
	Design	311	32	Apr-03-09 A	Jul-12-10									
	Toll System Solicitation Planning	70	0	Apr-27-09 A	Jul-31-09 A									
	DBOM Contract Procurement	174	174	May-27-10 A	Jan-27-11									
	Civil Construction	694	539	Aug-23-09 A	Jun-20-12									
	Tolling Implementation	503	503	Jan-27-11	Dec-31-12									
	I-10 Rehab Construction (CALTRANS)	675	361	Mar-27-09 A	Oct-31-11									
	Transit Service Improvements (METRO)	297	130	Sep-16-09 A	Dec-02-10									
	Transit Facility Improvements (METRO)	1537	562	Apr-04-06 A	Jul-23-12									
	Metrolink Pomona Station Improvements	457	306	May-01-09 A	Aug-12-11									
	Transit Signal Priority in Downtown (LADOT)	412	281	Sep-15-09 A	Jun-09-11									
	ExpressPark (LADOT)	900	561	Feb-02-09 A	Aug-15-12									
	Vanpools	380	380	Feb-01-12	Aug-02-13									
	CRD Data Collection	504	504	Aug-01-11	Aug-01-13									

Project ID: HLane Current Phase
 Data Date: May-28-10

Summary Schedule

Page 1 of 1

CRITICAL PATH NARRATIVE

The Critical Path of the HOT Lanes DBOM contract runs through the Toll Implementation design/procurement/test related activities. The following layout shows all the activities related to the Toll Implementation scope of work. The schedule assumes a one month end-to-end testing period for each of the corridors, following installation of the Toll Operation Service Center and two months of integrated test period for the entire system following the corridor-wide testing. Our design consultants have confirmed that those durations are adequate for the testing activities.

PROJECT COST STATUS

CONGESTION REDUCTION DEMONSTRATION PROGRAM
COMBINED COST REPORT BY PROJECT
METRO CONSTRUCTION MANAGEMENT DIVISION

PERIOD ENDING: MAY 2010
DOLLARS

PROJECT		NOTES	ADOPTED BUDGET	CURRENT FORECAST		COMMITMENTS		EXPENDITURES		BUDGET / FORECAST VARIANCE
				PERIOD	TO DATE	PERIOD	TO DATE	PERIOD	TO DATE	
CP 201059 - PROCURE 41 BUSES			28,317,164	-	28,317,164	396	27,806,434	396	27,214,037	-
CP 202001 - UNION DIVISION			95,000,000	-	95,000,000	11,624	13,848,286	127,886	8,052,011	-
CP 202286 - EL MONTE TRANSIT CTR & PATSOURAS CONNECTOR			60,106,000	-	60,106,000	966,839	5,192,417	131,349	2,998,501	-
CP 202287 - HARBOR TRANSITWAY IMPROVEMENTS			3,868,310	-	3,868,310	585,063	854,678	38,063	283,663	-
CP 210115 - BIKE LOCKERS			150,389	-	150,389	-	101,196	-	101,012	-
CP 210120 - TOLLTECHNOLOGY & ROADWAY IMPROVEMENTS		1	75,200,000	-	111,263,111	225,416	6,667,430	116,003	4,780,637	36,063,111
METRO & CALTRANS TOTAL			262,641,863	-	298,704,974	1,789,337	54,470,441	413,697	43,429,861	36,063,111
OTHER AGENCIES OR OTHER METRO COSTS:										
METROLINK	POMONA METROLINK STATION - INC. PARKING	5	10,815,476	-	10,981,349	149,917	9,367,203	94,883	2,151,421	165,873
METRO	OPERATING SUBSIDY FOR DEMO		6,300,000	-	6,300,000	-	-	-	-	-
FOOTHILL TRANSIT	PROCURE 12 BUSES		7,500,000	-	7,461,000	167	7,276,737	-	167	(39,000)
FOOTHILL TRANSIT	OPERATING SUBSIDY FOR DEMO		3,200,000	-	3,200,000	-	-	-	-	-
TORRANCE TRANSIT	PROCURE 4 BUSES		4,000,000	-	4,000,000	-	4,000,000	-	-	-
TORRANCE TRANSIT	OPERATING SUBSIDY FOR DEMO		1,200,000	-	1,200,000	-	-	-	-	-
GARDENA TRANSIT	PROCURE 2 BUSES		1,200,000	-	1,200,000	-	1,183,043	-	-	-
GARDENA TRANSIT	OPERATING SUBSIDY FOR DEMO		600,000	-	600,000	-	-	-	-	-
LADOT	TRANSIT SIGNAL PRIORITY		1,130,000	-	1,129,561	1,032	492,380	1,032	492,380	(439)
METRO	FACILITY O&M		3,200,000	-	3,200,000	-	-	-	-	-
METRO	VANPOOLS		400,000	-	400,000	-	-	-	-	-
LADOT	EXPRESSPARK		18,500,000	-	19,383,049	14,800	150,800	14,800	150,800	883,049
OTHER AGENCIES OR OTHER METRO COSTS:			58,045,476	-	59,054,959	165,916	22,470,163	110,715	2,794,768	1,009,483
TOTAL CRD PROGRAM:			2,3 320,687,339	-	357,759,933	1,955,253	76,940,604	524,412	46,224,629	37,072,594

NOTE 1: \$75.2M ADOPTED BUDGET INCLUDES \$4.6M IN O&M COSTS.
NOTE 2: ADOPTED BUDGET OF APPROXIMATELY \$320M IS THE \$290M BOARD APPROVED IN SEP-08 PLUS PARTNER LOCAL MATCH AND OTHER NON-CRD FUNDS TO BE USED IN CRD PROGRAM.
NOTE 3: CURRENT FORECAST SHOWN REQUIRES BOARD APPROVAL BECAUSE IT EXCEEDS ADOPTED BUDGET. METRO WILL SECURE ADDITIONAL NON-CRD/UPA FUNDING SOURCES TO ADDRESS THE SHORTFALL OR REDUCE/DEFER SCOPE.
NOTE 4: EXPENDITURES ARE CUMULATIVE THROUGH APRIL 30, 2010
NOTE 5: POMONA METROLINK STATION FORECAST INCLUDES OPTION FOR 200 PARKING SPACES.

FINANCIAL/GRANT STATUS – ORIGINAL SCOPE ACTIVITIES

**METRO EXPRESSLANES PROJECT
(IN MILLIONS OF DOLLARS)**

MAY 2010

STATUS OF FUNDS BY SOURCE

PROJECT	FUNDING SOURCES						CURRENT FORECAST	(A) APPROVED BUDGET	TOTAL FUNDS AVAILABLE (exc Local Funds)
	FED CMAQ TRANSIT	FED CMAQ HIGHWAY	FED FTA 5307	STATE SLPP	LOCAL FUNDS	NON CRD FUNDS			
METRO BUS PROCUREMENT	\$0.000	\$0.000	\$23.572	\$0.000	\$4.745	\$0.000	\$28.317	\$28.400	\$23.572
UNION DIVISION	\$0.000	\$0.000	\$0.000	\$0.000	\$0.000	\$95.000	\$95.000	\$80.000	\$17.193
EL MONTE TRANSIT CTR & PATSAOURAS CONNECTOR	\$0.000	\$0.000	\$42.900	\$0.000	\$12.306	\$4.900	\$60.106	\$55.206	\$3.360
HARBOR TRANSITWAY IMPROVEMENTS	\$0.000	\$0.000	\$3.120	\$0.000	\$0.748	\$0.000	\$3.868	\$3.850	\$2.000
BIKE LOCKERS	\$0.000	\$0.000	\$0.040	\$0.000	\$0.104	\$0.006	\$0.150	\$0.144	
TOLL TECHNOLOGY & ROADWAY IMPROVEMENTS	\$0.000	\$26.600	\$0.000	\$20.000	\$26.400	\$36.263	\$109.263	\$73.000	
METRO OPERATIONS & FACILITY O&M	\$6.300	\$3.200	\$0.000	\$0.000	\$0.000	\$0.000	\$9.500	\$9.500	
VANPOOLS	\$0.400	\$0.000	\$0.000	\$0.000	\$0.000	\$0.000	\$0.400	\$0.400	
BUS PROCUREMENT & OPERATIONS (OTHER AGENCIES)	\$5.000	\$0.000	\$11.500	\$0.000	\$0.000	\$1.161	\$17.661	\$16.500	
ADAMS FLYOVER PSR (CALTRANS)	\$0.000	\$0.000	\$0.000	\$0.000	\$2.000	\$0.000	\$2.000	\$2.000	
POMONA METROLINK STATION (SCRRA)	\$0.000	\$0.000	\$4.480	\$0.000	\$1.120	\$5.381	\$10.981	\$5.600	
EXPRESS PARK (LADOT)	\$0.000	\$15.000	\$0.000	\$0.000	\$0.000	\$4.383	\$19.383	\$15.000	\$0.250
TRANSIT SIGNAL PRIORITY (LADOT)	\$0.000	\$1.000	\$0.000	\$0.000	\$0.000	\$0.130	\$1.130	\$1.000	\$0.750
TOTAL FUNDS	\$11.700	\$45.800	\$85.612	\$20.000	\$47.423	\$147.224	\$357.759	\$290.600	\$47.125

(A) Budget approved by Metro Board on September 2008. Expenditures are cumulative through April 2010.

PROJECT	FUNDING SOURCES - ACTUAL EXPENDITURES						TOTAL
	FED CMAQ TRANSIT	FED CMAQ HIGHWAY	FED FTA 5307	STATE SLPP	LOCAL FUNDS	NON CRD FUNDS	
METRO BUS PROCUREMENT (CP 201059):							
EXPENDITURES			\$22.588		\$4.626		\$27.214
BILLED TO FUNDING SOURCE			\$22.588		\$4.626		\$27.214
UNION DIVISION (CP 202001):							
EXPENDITURES						\$8.052	\$8.052
BILLED TO FUNDING SOURCE						\$7.996	\$7.996
EL MONTE TRANSIT CTR & PATSAOURAS CONNECTOR: (CP 202286)							
EXPENDITURES			\$2.399		\$0.600		\$2.999
BILLED TO FUNDING SOURCE			\$2.399		\$0.600		\$2.999
HARBOR TRANSITWAY IMPROVEMENTS (CP 202287):							
EXPENDITURES			\$0.227		\$0.057		\$0.284
BILLED TO FUNDING SOURCE			\$0.227		\$0.057		\$0.284
BIKE LOCKERS (CP 210115):							
EXPENDITURES					\$0.101		\$0.101
BILLED TO FUNDING SOURCE					\$0.101		\$0.101
TOLL TECHNOLOGY & ROADWAY IMPROVEMENTS: (CP 210120)							
EXPENDITURES					\$4.781		\$4.781
BILLED TO FUNDING SOURCE					\$4.781		\$4.781
METRO OPERATIONS & FACILITY O&M:							
EXPENDITURES							\$0.000
BILLED TO FUNDING SOURCE							\$0.000
VANPOOLS							
EXPENDITURES							\$0.000
BILLED TO FUNDING SOURCE							\$0.000
BUS PROCUREMENT & OPERATIONS (OTHER AGENCIES)							
EXPENDITURES						\$0.002	\$0.002
ADAMS FLYOVER PSR (CALTRANS):							
EXPENDITURES							\$0.000
POMONA METROLINK STATION (SCRRA):							
EXPENDITURES						\$2.151	\$2.151
EXPRESS PARK (LADOT):							
EXPENDITURES						\$0.151	\$0.151
TRANSIT SIGNAL PRIORITY (LADOT):							
EXPENDITURES							\$0.492
TOTAL EXPENDITURES	\$0.000	\$0.000	\$25.214	\$0.000	\$10.165	\$10.848	\$46.227

PROJECT COST ANALYSIS

Adopted Budget

The Adopted Budget reflects the Metro Board adopted Life-of-Project (LOP) Budget which was approved in September 2008 in the amount of approximately \$290 million plus partner local match and other Non-CRD Funds to be used in the CRD Program, bringing the total CRD Program Budget to approximately \$320 million.

Adopted Budget and Current Forecast

The Current Forecast of approximately \$358 million (comprised of preliminary estimates) exceeds the Adopted Budget of \$320 million, which will require Board approval. Metro will secure additional Non-CRD/UPA funding sources to address the shortfall or reduce/defer scope.

Commitments

The Commitments increased by \$1.955M this period primarily for Metro and other agency staff charges, and awarding of task orders to miscellaneous design consulting firms.

Expenditures

Expenditures increased by \$524K this period primarily for expenditures for design and construction consulting firms, and Metro and Other Agency staff labor charges. The \$46.2 million in Project Expenditures to date represents 14.4% of the Adopted Budget.

STATUS OF FUNDS ANTICIPATED

FEDERAL CMAQ:

Transit Signal Priority (LADOT): \$250,000 of CMAQ funds is available for drawdown.
Express Park (LADOT): \$750,000 of CMAQ funds is available for drawdown.

FEDERAL FTA 5307:

Metro Bus Procurement: An FTA grant application of \$23.572M (CA-90-Y716) was awarded on July 2, 2009. Funds are available for drawdown.

El Monte Transit Center: An FTA grant application of \$2.160M (CA-90-Y716) was awarded on July 2, 2009. Funds are available for drawdown.

Patsaouras Connector: An FTA grant application of \$1.2M (CA-90-Y716) was awarded on July 2, 2009. Funds are available for drawdown.

Harbor Transitway Improvements: An FTA grant application of \$2.0M (CA-90-Y716) was awarded on July 2, 2009. Funds are available for drawdown.

Bus Procurement and Operations (Other Agencies):

Foothill Transit: Plans to submit in June 2010 a grant application to the FTA for \$7.5M.

Torrance Transit: A grant application for \$2.8M (CA-90-Y715) has been approved and funds are available for drawdown.

Gardena Transit: A grant application for \$1.2M (CA-90-Y707) has been approved and funds are available for drawdown.

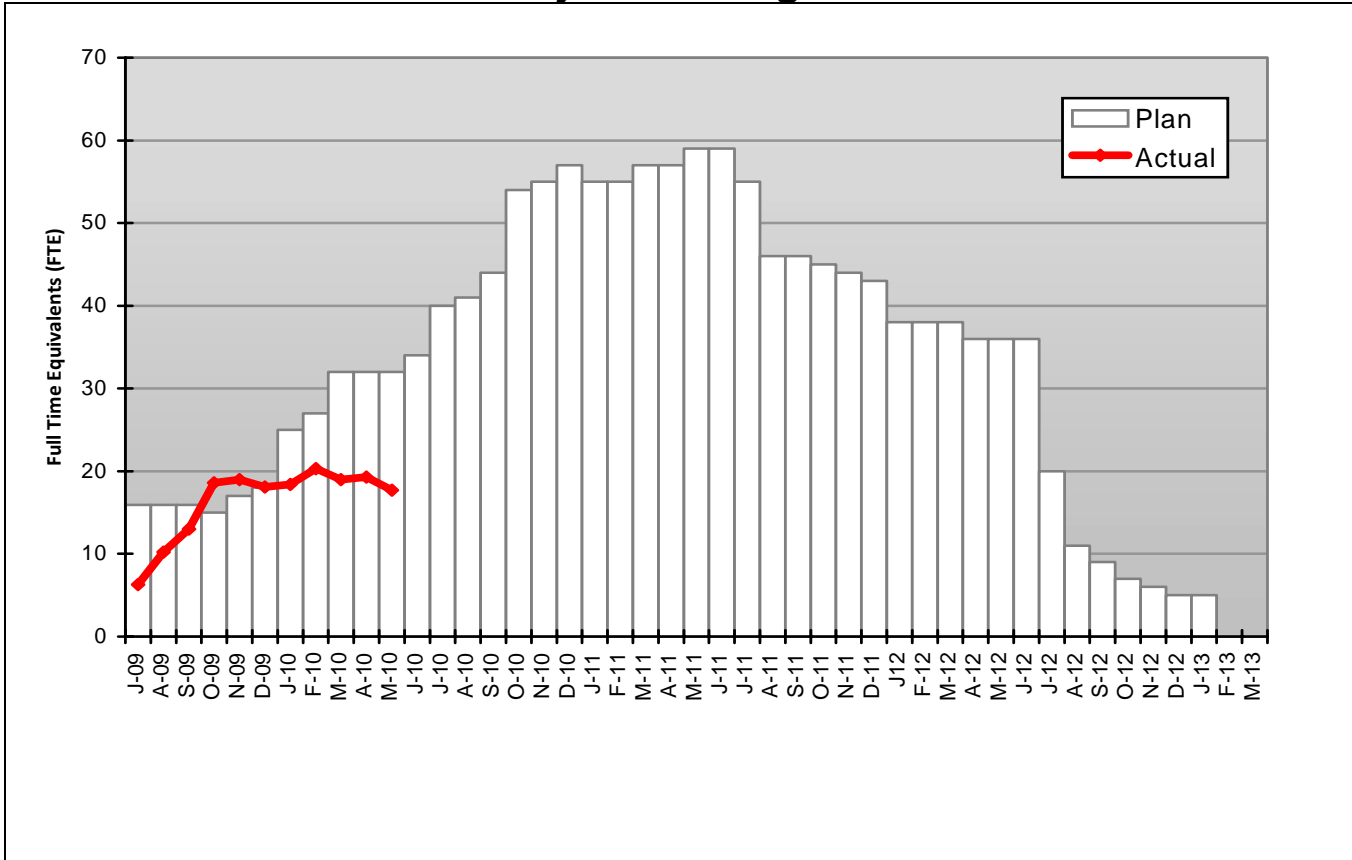
Metrolink: A grant application of \$4.7M (CA-90-Y777) will be submitted in June 2010.

NON CRD FUNDS:

Division 13 Proposition 1B Funds: An initial \$4.99M funding request was approved by the State in February 2008. However, Metro's second funding request of \$12.7M has been put on hold pending resolution of the State budget.

STAFFING STATUS

Total Project Staffing - FTEs



Total Project Staffing

The Total Project Staffing Plan has been updated to reflect the current plan which includes the El Monte Transit Center, Patsaouras Plaza, Harbor Transitway and Union Division support staff. Actuals have also been retroactively adjusted. The difference in the planned and actual staffing is largely due to the Division 13 Project (formerly the Union Division), which has not been staffed as planned due to a delay in the design effort. The design effort has been extended approximately 4 months while the construction contract procurement process is on hold pending identification of funds.

REAL ESTATE STATUS

- Metro County Counsel worked thru the month of May with Attorney representing the City of Alhambra towards the final draft of the MOU in an effort to obtain an agreement for the property swap and the envisioned improvements. Metro has provided to Caltrans and FHWA a proposal which eliminates the need to do any work within the area of the I-710 Freeway and Freemont Street on the Eastbound I-10 Freeway. The proposal was accepted therefore this project will not complete any property acquisition or this MOU for Real Estate within the City of Alhambra.

REAL ESTATE STATUS TO DATE

Number of Parcels	Required	In Appraisal Process	Appraisal Process Complete	Offer Made	Closing	Acquired	Turned Over to Contractor
This Period	0	0	0	0	0	0	0
Last Period	0	0	0	0	0	0	0

ENVIRONMENTAL STATUS

There are eight (8) projects that require environmental approval. The status of each is as follows:

- I-10 and I-110 HOV Conversion to HOT Lanes – EIR/EA. NEPA approval, with a Finding of No Significant Impact (FONSI), was received April 28, 2010. The environmental assessment was approved on May 14, 2010. CEQA approval is expected by the end of June 2010.
- Harbor Transitway Improvements – Listed Categorical Exclusion/Exemption, no approval required.
- El Monte Transit Center Improvements – Categorical Exclusion (NEPA)/Categorical Exemption (CEQA). Submitted September 2009. NEPA approved November 2009. CEQA approved December 2009.
- Patsaouras Plaza Connector – Categorical Exclusion (NEPA)/Categorical Exemption (CEQA). NEPA submitted for approval November 2009 and approved March 30, 2010. CEQA document was submitted in March 2010 and was approved on April 15, 2010.
- Division 13 (Union Division) – Categorical Exclusion (NEPA)/Categorical Exemption (CEQA). CEQA submitted August 2008 and approved September 2008. NEPA submitted and approved in December 2009.
- Transit Signal Priority – Categorical Exclusion (NEPA)/Categorical Exemption (CEQA). NEPA and CEQA approved September 2009.
- ExpressPark – Categorical Exclusion (NEPA)/Categorical Exemption (CEQA). NEPA and CEQA approved October 2009.
- Pomona Metrolink Station Improvements – Categorical Exclusion (NEPA)/Statutory Exemption (CEQA). NEPA and CEQA submitted November 2007. FTA requested more information in March 2010 and Metrolink staff is responding to FTA questions.

COMMUNITY RELATIONS STATUS

- During the month of May 2010, a total of 2 outreach briefings were provided to stakeholders from the City of Los Angeles, San Gabriel Valley and South Bay.
- The total number of project briefings held from April 25, 2008 through May 31, 2010 is 166, as follows:
 - Project stakeholder briefings, technical advisory group meetings, live web chats, and community workshops: 127
 - Legislative briefings: 20
 - Corridor Advisory Group meetings: 11
 - Public hearings: 8

As of the end of May the *ExpressLanes* stakeholder database included 1,697 contacts.

QUALITY ASSURANCE STATUS

- No QA activity for May 2010.

SAFETY STATUS

- No data available for May 2010.

**THIRD PARTY AGREEMENT STATUS
THIRD PARTY ADMINISTRATION AGREEMENTS**

Agency	Agreement Type	Purpose	Special Provisions	Funding Amount	Type of Funds	Need Date	Completion Status	For RFP
Caltrans	Cooperative/ Funding Agreement	Outline roles; funding for environmental document and roadway improvements; Funding for Design/Construction Oversight and balance of Environmental Document	Includes Caltrans Review/ Approval Deadlines	TBD	Capital	6/25/10	In Process	Yes
Caltrans	Encroachment Permit				Capital	7/22/10	In Process	Yes
Expo	MOU	Overcrossing at Adams to Exposition			Capital		Completed	Yes
LADWP	Electrical Service Agreement	Drops by PB/IBI Application Only			Capital	7/22/10		No
So Cal Edison	Electrical Service Agreement	Drops by PB/IBI Application Only			Capital	As required		No
City of Los Angeles	Amendment to Master Cooperative Agreement	Design Review for Adams Blvd. and POC		TBD	Capital	7/22/10	In Process	Yes
County of Los Angeles	Amendment to Master Cooperative Agreement	Design Review		TBD	Capital	7/22/10	In Process	No
SCRRRA	MOU	Design Review		TBD	Capital	7/22/10	In Process	Yes

AGENCY NOISE AGREEMENTS

Agency	Agreement Type	Purpose	Special Provisions	Funding Amount	Type of Funds	Need Date	Completion Status	For RFP
City of Los Angeles	Nighttime and Weekend Variance	Includes POC Bridge at Adams Blvd.			Capital	7/22/10	In Process	Yes
City of Monterey Park		Freeway Median Area	City Variance Not Required			N/A		N/A
City of Rosemead		Freeway Median Area	City Variance Not Required			N/A		N/A
City of El Monte		Freeway Median Area	City Variance Not Required			N/A		N/A
City of Baldwin Park		N/A	No Work in this Jurisdiction			N/A		N/A

INTEROPERABILITY AGREEMENTS

Agency	Agreement Type	Purpose	Special Provisions	Funding Amount	Type of Funds	Need Date	Completion Status	For RFP
Bay Area Toll Authority	User Fee Agreement	User Fee (Title 21 Interoperability)		\$0	Operating	By PDR	Not Started	No
Golden Gate Bridge, Highway & Transportation District	User Fee Agreement	User Fee (Title 21 Interoperability)		\$0	Operating	By PDR	Not Started	No
Orange County Transportation Authority	User Fee Agreement	User Fee (Title 21 Interoperability)		\$0	Operating	By PDR	Not Started	No
San Diego Association of Governments	User Fee Agreement	User Fee (Title 21 Interoperability)		\$0	Operating	By PDR	Not Started	No
SR125 Southbay Expressway, Chula Vista	User Fee Agreement	User Fee (Title 21 Interoperability)		\$0	Operating	By PDR	Not Started	No
TCA	User Fee Agreement	User Fee (Title 21 Interoperability)		\$0	Operating	By PDR	In Process	No

OPERATIONS AND MAINTENANCE AGREEMENTS

Agency	Agreement Type	Purpose	Special Provisions	Funding Amount	Type of Funds	Need Date	Completion Status	For RFP
Caltrans	Cooperative Agreement	Outline roles for operations and maintenance of HOT Lanes		\$0	Operating	6/25/10	In Process	Yes
Caltrans	Joint Use Agreement				Operating	By PDR		No
CHP	MOU	Dedicated Enforcement: 4 vehicles	Data Collection Requirement	\$500,000 CMAQ or Toll Revenues	Operating	By PDR	In Process	No
DMV	Requestor Account	Allows access to DMV records	None	\$250	Operating	By PDR	Not Started	No
USDOT	Tolling Agreement	Comply w/USC 166	On hold re: Use of toll revenues for buses	\$0	Operating		In Process	No
TCA	License Agreement	FasTrak Logo License	None	\$1	Operating	6/18/10	In Process	Yes
MTA	FSP Agreement	Amend FSP Agreement for dedicated trucks			Operating	4 months before opening	Not Started	No
MTA	Collection Agency Agreement				Operating		Not Started	No
MTA	MOU	Non Revenue Usage MOUs	Required for various agencies		Operating	2 weeks before usage	Not Started	No
MTA	Welcome Package	Materials needed for new Customer Welcome Package			Operating	4 months before opening	Not Started	No

TRANSIT IMPROVEMENT AGREEMENTS

Agency	Agreement Type	Purpose	Special Provisions	Funding Amount	Type of Funds	Need Date	Completion Status	For RFP
Caltrans	Cooperative Agreement	Patsaouras Plaza		TBD	Capital	6/30/10	In Process	No
Caltrans	MOU	El Monte Transit Center		N/A	Capital	6/18/10	In Process	No
Caltrans	MOU	Harbor Transitway		N/A	Capital		Executed April 2010	No
LADWP	Electrical Service Agreement	Drops by Application Only			Capital	As required		No
So Cal Edison	Electrical Service Agreement	Drops by Application Only			Capital	As required		No

FUNDING AGREEMENTS

Agency	Agreement Type	Purpose	Special Provisions	Funding Amount	Type of Funds	Need Date	Completion Status	For RFP
Caltrans	Cooperative Agreement	Initial Study for Environmental Document		\$200,000 Prop C	Capital		Executed June 2009	No
Foothill Transit Agency	LOA	Purchase 10 42' buses and funding for 1 year operating subsidy	Data Collection Requirement	\$7,461,000 FTA 5307 \$3,200,000 CMAQ	Capital and Operating		Executed August 2009	No
Foothill Transit Agency	LOA – Amendment #1	Purchase of 2 additional buses	No Additional Operating Subsidy	\$7,461,000 FTA 5307 \$3,200,000 CMAQ	Capital and Operating		Executed November 2009	No
Gardena Municipal Bus Lines	LOA	Purchase 2 gas/hybrid buses and funding for 1 year operating subsidy	Data Collection Requirement	\$1,200,000 FTA 5307 \$580,187 CMAQ	Capital and Operating		Executed September 2009	No
Torrance Transit	LOA	Purchase 4 buses and funding for 1 year operating subsidy	Data Collection Requirement	\$2,800,000 FTA 5307 \$1,160,373 CMAQ	Capital and Operating		Executed July 2009	No
Los Angeles Department of Transportation	LOA	Intelligent Parking Management Program	Data Collection Requirement	\$15,000,000 CMAQ	Capital		Executed August 2009	No
Los Angeles Department of Transportation	LOA	Install Transit Signal Priority in Downtown Los Angeles	Data Collection Requirement	\$1,000,000 CMAQ	Capital		Executed August 2009	No
Southern California Regional Rail Authority	LOA	Construct 100 parking spaces and expand platform at the Metrolink Pomona Station	Data Collection Requirement	\$4,480,000 FTA 5307 \$1,120,000 Prop C 10%	Capital		Executed August 2009	No

FUNDING AGREEMENTS

Agency	Agreement Type	Purpose	Special Provisions	Funding Amount	Type of Funds	Need Date	Completion Status	For RFP
USDOT	MOU	Award CRD funding for I-10 and SR-210 Demonstration Project	Tolling Authority Required by 10/15/08; Revenue Operations by 12/31/10	\$213.6 Million FTA 5309	Capital		Executed April 2008	No
USDOT	MOU – Amendment #1	Shift from SR-210 to I-110 and I-10 Demonstration Project	Tolling Authority Required by 10/15/08; Revenue Operations by 12/31/10	\$210.6 Million FTA 5309	Capital		Executed July 2008	No
USDOT	MOU – Amendment #2	Administrative Amendment/ Reconcile MOU with Tolling Authority Legislation	Capacity Improvements by 12/31/08; Revenue Operations by 12/31/10	\$210.6 Million FTA 5309	Capital		Executed November 2008	No
USDOT	MOU – Amendment #3	Amendment #3 for Schedule Extension		\$210.6 Million FTA 5309	Capital	6/30/10	In Process	No

DBOM CONTRACTOR RESPONSIBILITY

Agency	Agreement Type	Purpose	Special Provisions	Funding Amount	Type of Funds	Need Date	Completion Status	For RFP
FCC	License Agreement	Needed for Operation of Fastrak Transponders?	DBOM Contractor to secure					No
TBD	Maintenance Agreement	Toll Electrical and Equipment Maintenance	DBOM Contractor to secure					No
TBD	Facility Lease	Needed for Customer Service Center	DBOM Contractor to secure					No
TBD	Credit Card/Bank Processing Agreements		DBOM Contractor to secure					No
TBD	Website Hosting Agreement		DBOM Contractor to secure					No
TBD	Phone/ Internet Service Agreement		DBOM Contractor to secure					No
TBD	Mail Processing Agreement		DBOM Contractor to secure					No
TBD	Armored Car Service Agreement		DBOM Contractor to secure					No

CHRONOLOGY OF EVENTS

April 24, 2008	MOU w/USDOT for \$210 million Grant Award (I-210/I-10).
July 23, 2008	CTC Eligibility Finding.
July 24, 2008	1 st Amendment to MOU w/USDOT (Changes Demo Project from I-210/I-10 to I-110/I-10).
August 24, 2008	Preliminary Concept of Operations for I-10 and I-110.
September 28, 2008	State Tolling Authority Legislation Approved (Expires 1/15/13).
September 29, 2008	Metro/Caltrans certify funding available for ExpressLanes.
November 24, 2008	2 nd Amendment to MOU w/USDOT (administrative changes).
December 4, 2008	ExpressLanes Project Inclusion in RTP approved.
December 22, 2008	Key Physical Capacity Improvements identified to USDOT.
January 14, 2009	FTIP approved: Amend #1 to the RTP and Amend 08-01 to 2008 RIP.
January 22, 2009	Public Outreach & Communications Plan approved by Metro Board.
February 17, 2009	RFIQ for Toll Systems Integrator released.
April 15, 2009	Preliminary Engineering begins for Electronic Toll Collection.
May 4, 2009	Short List of Toll Systems Integrator Firms completed.
June 22, 2009	Public Hearings for Toll Rates (6).
July 23, 2009	Toll Rates and Toll Policy adopted.
January 20, 2010	Metro Board Approved USDOT National Evaluation Plan.
February 12, 2010	Circulation of the Draft EIR/EA for the the I-10 and I-110.
March 9 & 10, 2010	Public hearings held for the draft EIR/EA for I-10 and I-110.
March 25, 2010	Metro Board Approved Low Income Commuter Assessment.

CHRONOLOGY OF EVENTS

April 7, 2010	CTC Authorizes Design-Build Authority for I-10 and I-110 HOT Lanes.
April 22, 2010	Metro Board Approved Administrative Account Fee Schedule.
April 28, 2010	EIR/FONSI for the I-10 and I-110 HOT Lanes is approved. Project Oversight Agreement Executed.
May 14, 2010	Environmental Assessment for the I-10 and I-110 HOT Lanes is approved.

LA CRD PRE-DEPLOYMENT DATA COLLECTION

Silver Line Ridership

Month	Average Weekday Boardings	Average Saturday Boardings	Average Sunday Boardings
Dec. 2009*	4,208	969	1,335
Jan. 2010	6,612	2,231	1,411
Feb. 2010	6,974	2,489	1,768
Mar. 2010	7,170	2,566	1,805
Apr. 2010	7,173	2,860	1,744
May 2010	7,422	2,758	1,895

*Silver Line started operation on 12/13/09 so ridership estimate represents partial month.

El Monte Transit Center Parking Data

Date of Count	Time of Count		
Date	Time	Count	Capacity
Jan. 12, 2010	10:30 AM	1,486	1,761

Pomona Metrolink Station Parking Data

Date of Count	Time of Count	Pomona	
Date	Time	Capacity	Count
Sept. 16, 2009	10:45 AM	230	230
Oct. 21, 2009	10:30 AM	230	230
Nov. 18, 2009	10:15 AM	230	230
Dec. 16, 2009	10:45 AM	230	230
Jan. 20, 2010	10:00 AM	230	230
Mar. 17, 2010	10:15 AM	230	230
Apr. 21, 2010	10:30 AM	230	230
May 19, 2010	10:15 AM	230	230

APPENDICES

COST AND BUDGET TERMINOLOGY

ADOPTED BUDGET: The Approved Project Budget as established by Metro Board of Directors at the time it authorizes Construction Project Management Division to commence full design and construction of the project (Project Adoption).

CURRENT FORECAST: Evaluation of costs to go combined with actual expenditures.

COMMITMENTS: The total of actual contract awards, executed change orders or amendments, approved work orders of Master Cooperative Agreements, offers accepted for purchase of real estate, and other Metro actions which have been spent or result in the obligation of specific expenditures at a future time. Also includes commitments reported by other agencies.

EXPENDITURES: The total dollar amount of funds expended by Metro for contractor or consultant invoices, third party invoices, staff salaries, real estate and other expenses that is reported in Metro's Financial Information System (FIS and expenditures reported by other agencies.

APPENDIX

LIST OF ACRONYMS

ARRA	American Recovery & Reinvestment Act
AWIS	Automated Work Zone Information Systems
BRT	Bus Rapid Transit
CADD	Computer Aided Drafting and Design
CALTRANS	California Department of Transportation
CCTV	Closed Circuit Television
CD	Calendar Day
CDFG	California Department of Fish and Game
CM	Construction Manager
CMAC	Congestion Mitigation Air Quality
CMIA	Cash Management Improvement Act
CMS	Changeable Message Signs
CN	Change Notice
CNG	Natural Gas
CO	Change Order
COE	Corps of Engineers
COLA	City Of Los Angeles
CONOPS	Concept of Operations
CPM	Critical Path Method
CPUC	California Public Utilities Commission
CR	Camera Ready
CRD	Congestion Reduction Demonstration
CTC	California Transportation Commission
D-B	Design-Build
D-B-B	Design-Bid-Build
DBOM	Design, Build, Operate and Maintain
DD	Design Development
DEIR	Draft Environmental Impact Report
DWP	Department of Water and Power
EA	Environmental Assessment
EIR	Environmental Impact Report
EIS	Environmental Impact Statement
FD	Final Design
FEIR	Final Environmental Impact Report
FHWA	Federal Highway Administration
FIS	Financial Information System
FOCT	Fiber Optics Cable Transmission System
FTE	Full Time Equivalent
GDSR	Geotechnical Design Summary Report
GSA	General Services Administration
GSRD	Gross Solids Removal Devices
HAR	Highway Advisory Radio

APPENDIX
LIST OF ACRONYMS (Continued)

HOT	High Occupancy Toll
HOV	High Occupancy Vehicle
IFB	Invitation for Bid
IPO	Integrated Project Office
ITS	Intelligent Transportation Systems
LA	Los Angeles
LABOE	Los Angeles Bureau of Engineering
LACFCD	Los Angeles County Flood Control District
LADOT	Los Angeles Department of Transportation
LADPW	Los Angeles Department of Public Works
LADWP	Los Angeles Department of Water and Power
LARTMC	Los Angeles Regional Transportation Management Center
LFAT	Local Field Acceptance Test
LNTP	Limited Notice To Proceed
LONP	Letter Of No Prejudice
LOP	Life of Project
MCA	Master Cooperative Agreement
METRO	Los Angeles County Metropolitan Transportation Authority
MIS	Major Investment Study
MOT	Maintenance of Traffic
MOU	Memorandum of Understanding
MPSR	Monthly Project Status Report
MVDS	Microwave Vehicle Detection System
MVP	Maintenance Vehicle Pullouts
MWD	Metropolitan Water District
N/A	Not Applicable
NEPA	National Environmental Protection Act
NHS	National Highway System
NOA	Notice of Award
NTE	Not to Exceed
NTP	Notice To Proceed
NTSC	National Television System Committee
P6	Primavera Project Planner® (scheduling software)
PC	Project Control
PE	Preliminary Engineering
PIP	Project Implementation Plan
PM	Project Manager
PMA	Project Management Assistance
PMP	Project Management Plan
P&P	Policies & Procedures
PR	Project Report
PS&E	Plans, Specs & Engineering

APPENDIX
LIST OF ACRONYMS (Continued)

PSR	Project Study Report
QA	Quality Assurance
QAR	Quality Assurance Report
QC	Quality Control
QPSR	Quarterly Project Status Report
RFC	Request For Change or Released for Construction (based on context)
RFP	Request For Proposal
RMS	Ramp Metering Systems
ROM	Rough Order of Magnitude
ROW	Right-Of-Way
SIT	System Integration Testing
RSTP	Regional Surface Transportation Program
RWQCB	Regional Water Quality Control Board
SAFETEA- LU-	Safe, Accountable, Flexible, Efficient Transportation Equity Act: A Legacy for Users
SCE	Southern California Edison
SEMP	Systems Engineering Management Plan
SONET	Synchronous Optical Network
SOV	Single Occupant Vehicle
SOW	Statement Of Work
SP	Special Provision
TBD	To Be Determined
TCRP	Traffic Congestion Relief Program
TMS/CS	Traffic Monitoring Stations/Count Stations
TPM	Transportation Management Plan
UPS	Uninterrupted Power Supply
USDOT	United States Department of Transportation
VE	Value Engineering
WBS	Work Breakdown Structure
WP	Work Package