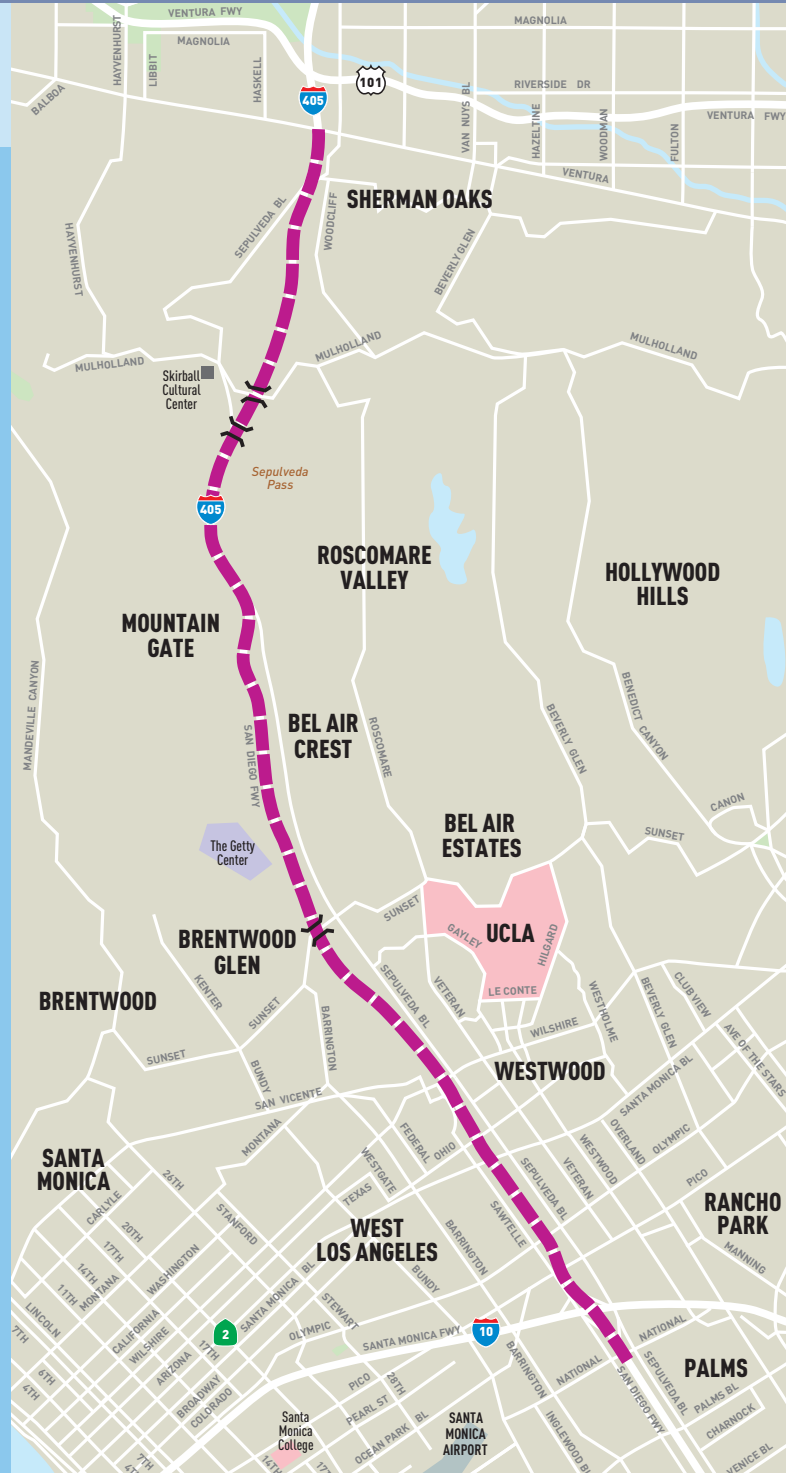




I-405 Sepulveda Pass Improvements Project

MONTHLY PROJECT STATUS REPORT



Metro®



11-00623P1 © 2010 LACMTA

INTERSTATE 405 SEPULVEDA PASS IMPROVEMENTS PROJECT

MONTHLY PROJECT STATUS REPORT

THE PREPARATION OF THIS DOCUMENT HAS BEEN FINANCED IN PART THROUGH GRANTS FROM THE FEDERAL HIGHWAY ADMINISTRATION (FHWA) AND THE AMERICAN RECOVERY AND REINVESTMENT ACT (AARA) AND FUNDS FROM THE STATE OF CALIFORNIA.

APRIL 2013

TABLE OF CONTENTS

	Page No.
Project Overview & Status.....	1-2
Management Issues.....	2-4
Project Status	
• Project Scope.....	5-6
• Schedule	
○ Key Milestones Six-Month Lookahead	7-8
○ Project Summary Schedule	9
○ Critical Path Narrative.....	10
• Project Cost Status.....	11-12
• Financial/Grant Status.....	13
• Staffing.....	14-15
• Real Estate.....	16
• Environmental.....	17
• Community Relations.....	18
• Quality Assurance.....	18
• Safety and Security Status.....	19
• Third Party.....	20
Contract C0882 Status.....	21
Chronology of Events.....	22-33
Construction Photographs.....	34-39
Appendices.....	40-43

PROJECT OVERVIEW & STATUS

The I-405 Sepulveda Pass Improvements Project will add a 10-mile HOV lane and improve supporting infrastructure such as ramps, bridges, and soundwalls on the San Diego Freeway (I-405); while widening lanes from the Santa Monica Freeway (I-10) to Ventura Freeway (U.S. 101). This project will reduce existing and forecasted traffic congestion on the I-405 and enhance traffic operations by adding freeway capacity in an area that experiences heavy congestion. In addition to these modifications, the project will improve both existing and future mobility and enhance safety throughout the corridor. Project benefits include a decrease in commuter time, reduce air pollution, and promote ridesharing. The I-405 Sepulveda Pass Improvements Project features include:

- *Add a 10-mile HOV lane on the northbound I-405 between the I-10 and US-101 freeways*
- *Remove and replace the Skirball Center, Sunset Blvd. and Mulholland Dr. Bridges*
- *Realign 20 on and off ramps*
- *Widen 20 existing overpasses and structures*
- *Construct approximately 18 miles of retaining walls and soundwalls*

Interstate 405 (I-405), also known as the San Diego Freeway, is a north/south route classified as an interstate/interregional loop freeway. It is part of the National Highway System (NHS), originating at the I-5 in Orange County in the City of Irvine and terminating at the I-5 in Los Angeles County, in the City of Los Angeles near the community of Mission Hills.

The design-build contract Notice to Proceed (NTP) was given on 6/2/2009, with commencement of contract time (1550 calendar days) on August 31, 2009. Substantial completion is currently expected to occur in May 2013, with final acceptance of the project required by November 27, 2013.

Reconstruction of the Mechanically Stabilized Earth (MSE) Walls is nearly complete for the ones which were deconstructed.

Kiewit submitted an Impacted Schedule (FI3) which showed a Substantial Completion date way beyond the contractual completion date. It should be noted that Kiewit and Caltrans/Metro, after exhaustive reviews with technical staff in April-May 2012, developed a schedule that showed completion dates per Area ranging from July 2013 to February 2014. Since that time, Kiewit added additional 9 months of delay to the dates agreed to in April-May 2012. Metro staff reviewed Area 4 critical path and believe that there is a potential time savings of 2 months. At this point, further discussion will not help Metro understand how the 9 months were added. Kiewit has informed the Project that they will not use the FI3 schedule, and they are working on a new CPM schedule which is expected to be submitted in May 2013. Metro completed an initial Time Impact Analysis (TIA) that determined Kiewit to be entitled to 149 calendar days (CD) of excusable delay. Further analysis may change this, but the Project feels comfortable extending the Project Substantial Completion Deadline by 149 CD at this time. Metro has started complete evaluation of the entire TIAs covering all delays on the Project. This process is expected to take 4-6 months and will address delay issues for Metro.

PROJECT OVERVIEW & STATUS (Cont'd)

Key project activities for April 2013 include:

- Project has set June 26, 2013 for opening of a General Purpose lane in Segment 1. Although Kiewit may open the lane earlier, but it is safe to report June 26th at this time.
- Kiewit has stopped using the FI3 schedule and has not asked Metro to approve any schedule. Kiewit has informed the Project that they are working on a new CPM schedule which is expected to be submitted in May 2013, and Metro is waiting to hear from Kiewit on what schedule they intend to use on the Project.
- Area 5 construction, which includes Getty improvements, is moving forward. Issues of significance are: 1) Payment process for Getty self-performed mitigation work (Caltrans and Getty issue); 2) Reconfiguration of Getty Center Drive undercrossing lanes and signalization, which needs City and Caltrans approval; 3) Completion of walls and drainage on the west side of the freeway.
- Maintenance of Traffic (MOT) will be a concern as the Project is expecting significant concurrent work on Sepulveda Blvd. which will impact Community/Traffic. Community Outreach will take place along with monitoring to determine impacts to traffic and potential for resolution.

MANAGEMENT ISSUES

Concern No. 1: Align I-405 Closer to the Getty Parking Structure (96" MWD Waterline)

Status/Action Negotiation of the design cost is in progress with anticipated completion by end of June 2013. Construction costs have been agreed to with Kiewit and Project sent the change order to the Board in April 2013 for approval of the cost increase based on resolution with Kiewit. The design portion is still in Fact-Finding and Metro has requested clarification on scope and fee from Kiewit's subcontractor who is working on design. Information has been slow in getting to Metro, which is causing delay.

Concern No. 2: Provisional Sums

Status/Action There will be a significant cost increase in Provisional Sums caused by unknown utility conflicts at bid time. Currently, Project is reviewing Utility scopes to verify their accuracy and identify other issues, such as future changes, that could impact the project later. In addition, the Project is actively pushing Kiewit to forward price all relocations and stop Time and Material (T&M), except in emergency type situations. Kiewit has exceeded original estimates by double in some cases which has made resolution difficult, but Project is working the issue with Kiewit.

MANAGEMENT ISSUES (Cont'd)

Concern No. 3: Kiewit and Metro Estimating Approaches

Status/Action Construction estimates are advancing at this time. Design estimates, however, are acting differently, see Concern No. 1 above. Project staff, including Procurement, are working on these issues.

Concern No. 4 Project Cost and Schedule Reassessment

Status/Action Life of Project Budget and schedule impacts will be presented to the Board at the June 2013 meeting.

Concern No. 5: Widening of Sepulveda between Montana and Church

Status/Action This is part of the Westwood Hills lawsuit settlement and resolution of issues related to the LADOT requests for widening Sepulveda Blvd. The Project is behind in fact-finding and cost resolution.

Concern No. 6: Retaining Walls 1720 and 1730

Status/Action The changes to these walls are related to the potential Westwood Hills lawsuit settlement, LADOT requests for widening of Sepulveda, and reduced work for Kiewit at this location. Metro has been fact-finding with Kiewit for quite some time to get closer to resolving cost estimate differences. Area 5 (Getty) has taken priority so the resolution of this issue has been delayed. Metro Board approved the initial change and the Project is working under the assumption that this work is a credit to the project. After two years of requesting details of how artwork would be placed on Walls 1720 and 1730, Kiewit was able to convince the Mayor's office to scale back the artwork. Unfortunately, Cultural Affairs and the Artist are not cooperating and an artwork of some kind will still need to be incorporated on walls. Kiewit and the Artist are currently working on this issue. In late April 2013, Metro asked Caltrans Aesthetics to design an alternative to City artwork. At this time, the Project expects two reasonable designs by the end of May 2013. Community outreach will follow.

MANAGEMENT ISSUES (Cont'd)

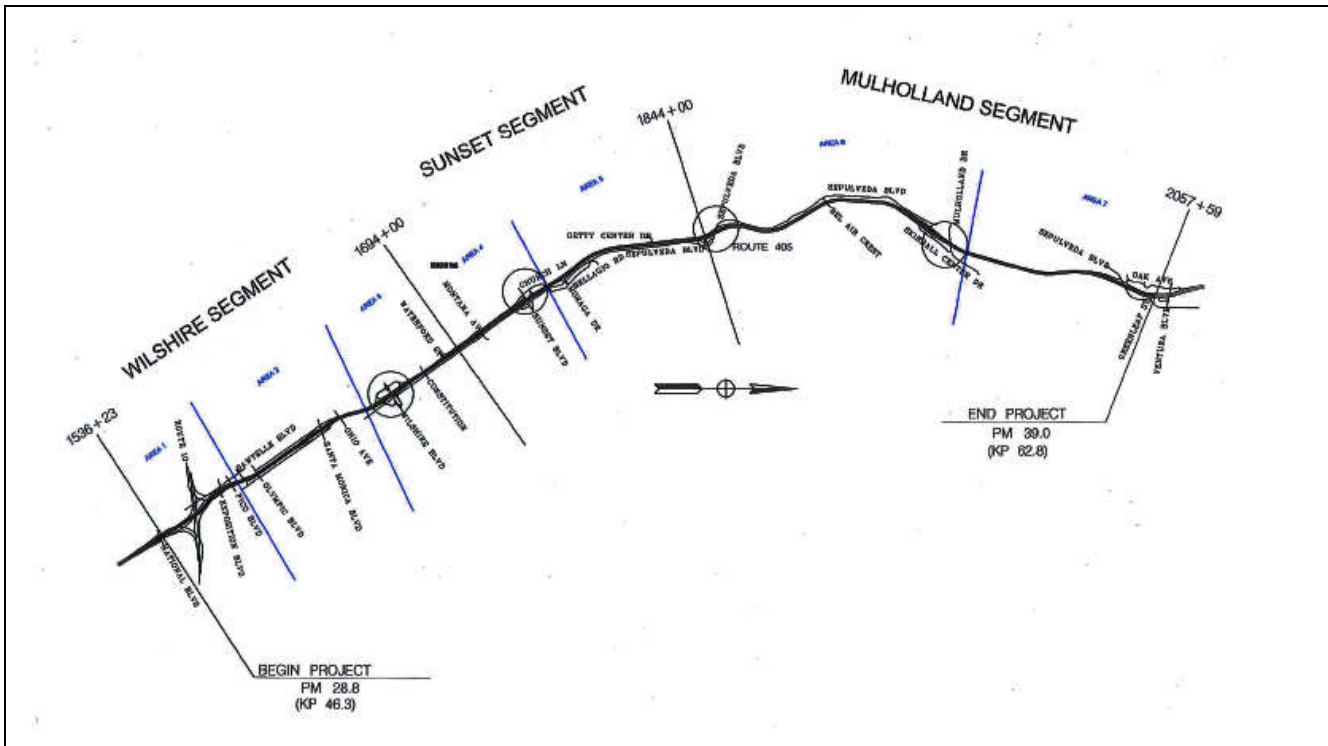
Concern No. 7: Giro Lawsuit

Status/Action Caltrans has decided that modifying the existing ramps to tie into new freeway widening, and then pursue a new ramp design after I-405 Project is complete, is the preferred resolution. The project is also looking into closing the northbound Getty on-ramp, based on construction requirements, to help reduce construction impacts. Comment resolution is becoming an issue on ramp design. Project is asking for support from Caltrans to accelerate comment resolution with HNTB.

Concern No. 8: MSE Walls Failure

Status/Action Reconstruction of the Mechanically Stabilized Earth (MSE) Walls is nearly complete for the ones which were deconstructed.

PROJECT SCOPE



The I-405 Sepulveda Pass Improvements Project is a Design-Build contract to add a 10-mile High Occupancy Vehicle (HOV) lane on the northbound San Diego Freeway (I-405) between the Santa Monica (I-10) and Ventura (US 101) Freeways. The purpose of the project is to reduce congestion by adding the HOV lane and closing the HOV gap, which will provide a continuous HOV lane from the Orange County Line to the I-405/US-101 interchange. The scope entails an 11-foot half median, one 12-foot HOV lane, a 1-foot HOV buffer, five 12-foot mixed-flow lanes (six 12-foot mixed-flow lanes between Mulholland Bridge and Valley Vista), and a 10-foot outside shoulder.

Most of the freeway widening required for this project occurs along the east side of I-405 along Sepulveda Blvd. between Montana Ave. and Moraga Dr. and between Getty Center Drive and the northbound Getty Center off-ramp. Sepulveda Blvd. is going to be slightly realigned at the relocated southbound I-405 Skirball Center Drive on/off-ramps in order to add a dual-left-turn lane to the on-ramp.

Some freeway widening also occurs along the west side of the freeway between Olympic Blvd. and Waterford Street, and between Bel Air Crest to just north of Ventura Blvd. This entails NB and SB lanes and shoulder standardization.

In order to reduce accidents associated with traffic on the ramps, project scope includes several interchange improvements as detailed below:
















PROJECT SCOPE

- Wilshire Blvd. interchange in both directions
The northbound on-ramp from eastbound Wilshire Blvd. is grade-separated from the northbound off-ramp to westbound Wilshire Blvd. and from Sepulveda Blvd. The southbound off-ramp to eastbound Wilshire Blvd. is grade-separated from the southbound off-ramp to westbound Wilshire Blvd.
- Northbound I-405 Sunset Blvd. interchange
The northbound I-405 off-ramp to eastbound Sunset Blvd. is widened to include one more lane. Two exclusive 12-foot lanes on the reconstructed Sunset Blvd. overcrossing and two 12-foot lanes on the on-ramp are provided for the northbound I-405 on-ramp from eastbound Sunset Blvd. In the eastbound direction three 12-foot lanes and in the westbound direction three 11-foot lanes are provided which solves the existing reduction from three lanes to two lanes in the eastbound direction. In both directions, 4-foot shoulders and 5-foot sidewalks as well as a 13-foot median are provided on the Sunset Blvd. overcrossing.
- The irregular northbound I-405 on/off-hook ramps at the Getty Center interchange are reconfigured to a standard diamond interchange to increase stopping sight distances in order to improve safety.
- The southbound I-405 Skirball Center Drive interchange is relocated to form a “T” intersection with Sepulveda Blvd. This eliminates the existing intersection at Skirball Off-Ramp and Skirball Center Drive.
- The southbound Valley Vista On and Off Ramps are realigned due to freeway widening and freeway mainline realignment between SB Valley Vista On/Off Ramps. The realignment will improve the stopping sight distance for the SB Valley Vista Off-Ramp. A third lane will be added to the SB Valley Vista On-Ramp to increase the ramp capacity.
- A second NB lane will be added on Skirball Center Drive between the Skirball Bridge and NB Skirball ramps.
- A NB auxiliary lane and bike lanes will be added on Sepulveda Blvd. on each direction, between the new SB Skirball ramps and Skirball Bridge.

A total of 12 soundwalls and 54 retaining walls within the project limits are constructed at embankments where right-of-way is constrained.






A total of 12 undercrossings within the project limits are widened. Three overcrossings at Sunset Boulevard, Skirball Center Drive, and Mulholland Drive are replaced.

KEY MILESTONE SCHEDULE SIX-MONTH LOOKAHEAD

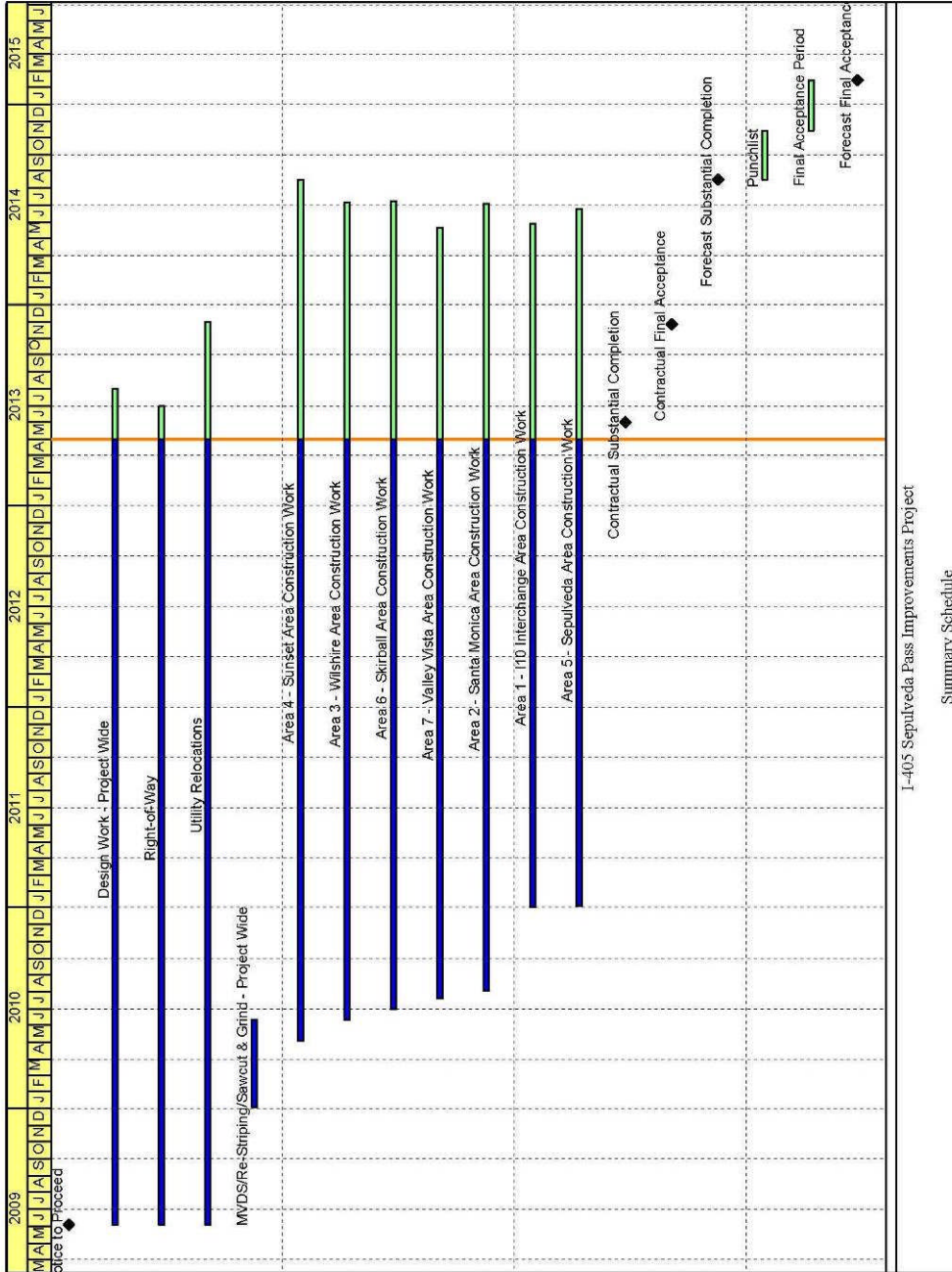
	Milestone Date	Apr-13	May-13	Jun-13	Jul-13	Aug-13	Sep-13						
Bridge 17 Church UC - Begin CIDH Pile Installation	4/2/13A	○											
I-10 Interchange Area - Complete Concrete Paving on NB side.	4/6/13A	○											
Bridge 22 Mulholland OC - Complete North Side Falsework Installation	4/9/13A	○											
Bridge 2 - Exposition UC - Complete Demolition of Existing Bridge Spans 4 - Abutment 9.	4/15/13A	○											
Area 1 Center Median - Begin NB Median Roadway Work	4/17/13A	○											
Bridge 7 - NB Wilshire Off-ramp CIP Box Girder (Top Deck Spans 4-3) - PH 2 Complete Installation	4/18/13A	○											
Bridge 8 - NB Wilshire On-ramp - Complete Installation of CIP Box Girder Top Deck - (abut #9, bent 6-8) - PH 3	4/20/13A	○											
Bridge 2 - Exposition UC - Begin Construction of Piers and Columns for Bents 5R-8R and 5 & 6 West.	4/22/13A	○											
Bridge 4A - Santa Monica UC - Complete Bridge Work	4/30/13A	○											
Santa Monica Area NB - Complete Paving Activities	5/1/13*		○										
Bridge 3 Olympic UC Complete Bridge Work	5/3/13*		○										
Bridge 19 - Sepulveda UC - Begin Installation of Precast Concrete Girders	5/13/13		○										
Bridge 6 - SB Wilshire Off-ramp - Complete Bridge Work-6A & 6B	5/22/13*		○										
Bridge 2 - Exposition UC - Begin Installation of CIP Box Girder Stems, Stage 2 (Span 4-8)	5/26/13*		○										
Bridge 23 - Sepulveda - Begin Installation of CIP T-Girders - PH 1	5/28/13*		○	○									
Bridge 2 - Exposition UC - Complete Installation of CIP Box Girder Deck, Stage 2 (Span 4-8)	6/2/13*			○									
Bridge 21 - Skirball OC - Begin Installation of Precast Concrete Girders-South Side.	6/7/13*			○									
<table border="0"> <tr> <td> Metro Milestone</td> <td> Design/Build</td> <td> Third Parties Approval</td> </tr> <tr> <td> Caltrans Milestone</td> <td>* New Date</td> <td> FHWA Federal Highway Administration Approval</td> </tr> </table>								 Metro Milestone	 Design/Build	 Third Parties Approval	 Caltrans Milestone	* New Date	 FHWA Federal Highway Administration Approval
 Metro Milestone	 Design/Build	 Third Parties Approval											
 Caltrans Milestone	* New Date	 FHWA Federal Highway Administration Approval											

KEY MILESTONE SCHEDULE SIX-MONTH LOOKAHEAD

	Milestone Date	Apr-13	May-13	Jun-13	Jul-13	Aug-13	Sep-13
Bridge 22 - Mulholland OC -Complete Pouring Top Deck	6/27/13*			○			
I-10 Interchange Area NB - Complete Landscaping & Irrigation installation	6/27/13*			○			
SB 405 in Santa Monica Blvd. Area - Complete Concrete Paving.	6/28/13*			○			
Bridge 17 Church Lane UC - Begin Installation of Falsework for Top Deck.	7/22/13				○		
Santa Monica Area SB - Complete Paving Activities	7/26/13*				○		
Bridge 23 Sepulveda - Complete Installation of Structural Steel Girders	7/30/13*				○		
Santa Monica Area SB - Complete Irrigation and Landscaping	7/31/13				○		
Bridge 2 Exposition UC - Complete Bridge Work (Stage 2 Span 4-8)	8/5/13*					○	
Bridge 23 Sepulveda UC - Begin Steel Girder Top Deck & Diaphragms Installation Phase 1	8/14/13					○	
NB 405 from EB Wilshire Blvd. On-ramp - Begin 90 Day Closure Window.	8/16/13*					○	
NB 405 in Wilshire Blvd. Area - Complete Concrete Paving.	8/30/13*					○	
SB 405 in Wilshire Blvd. Area - Complete Concrete Paving.	9/17/13*						○
Bridge 22 Mulholland DR. OC - Begin Falsework removal.	9/19/13*						○
Bridge 14 Sunset Offramp - Complete Steel Girder Top Deck & Diaphragms/Bridge Bearing.	9/24/13*						○
Bridge 19 Sepulveda UC - Begin Setting Precast Concrete Girders.	9/30/13						○

 Metro Milestone
  Design/Build
  Third Parties Approval
 Caltrans Milestone
 * New Date
  FHWA Federal Highway Administration Approval

PROJECT SUMMARY SCHEDULE



I-405 Sepulveda Pass Improvements Project

Summary Schedule

CRITICAL PATH NARRATIVE

The project has several critical paths which may potentially change as the work progresses. Based on the current project update, the primary critical path runs through MSE Wall 1766, Moraga On-Ramp, and MSE Wall 1764. The path then continues with construction of MSE Wall 1760 and Sunset Area NB widening. The path ends with Area 4 median work.

PROJECT COST STATUS

I-405 SEPULVEDA PASS IMPROVEMENTS PROJECT
 FEDERAL PROJECT #: SARRA-405-3(015)N, METRO PRIME CONTRACT# C0882
 METRO CONSTRUCTION MANAGEMENT DIVISION / CALTRANS
 COMBINED COST REPORT BY PHASE
 PERIOD ENDING: APRIL 2013
 DOLLARS IN THOUSANDS

PHASE #	PHASE CODE	DESCRIPTION	ORIGINAL BUDGET	CURRENT BUDGET		COMMITMENTS		EXPENDITURES		CURRENT FORECAST		BUDGET / FORECAST VARIANCE
				PERIOD	TO DATE	PERIOD	TO DATE	PERIOD	TO DATE	PERIOD	TO DATE	
0	PA&ED	PROJECT APPROVAL & ENVIRO DOCS	22,000	-	21,457	-	21,078	-	21,078	-	21,457	-
1	PSE	PLANS, SPECS, & ENGINEERING	63,100	-	25,560	-	25,613	-	25,677	-	25,632	72
2	RS	RIGHT-OF-WAY SUPPORT	14,000	-	9,543	91	6,602	91	6,602	-	8,076	(1,467)
3	CS	CONSTRUCTION SUPPORT	28,000	-	67,813	894	77,043	2,017	65,650	-	75,419	7,606
4	C	CONSTRUCTION	823,900	26,100	836,541	-	808,838	13,652	561,282	-	865,324	28,783
9	RC	RIGHT-OF-WAY CAPITAL	83,000	-	99,186	182	54,100	571	43,416	-	60,792	(38,394)
SUBTOTAL PROJECT			1,034,000	26,100	1,060,100	1,168	993,274	16,332	723,704	-	1,056,700	(3,400)
4	C	CONSTRUCTION OF CITY OF L.A.'S REVERSIBLE LANES PROJECT	-	(3,400)	2,600	-	-	-	-	-	6,000	3,400
4	C	CONSTRUCTION OF CALTRANS DRAINAGE SYSTEM REPAIRS	-	-	8,000	-	-	-	-	-	8,000	-
TOTAL PROJECT			1,034,000	22,700	1,070,700	1,168	993,274	16,332	723,704	-	1,070,700	-

NOTE: EXPENDITURES ARE CUMULATIVE THROUGH MARCH 31, 2013.
 KIEWIT EXPENDITURES ARE ONLY THROUGH DECEMBER 31, 2012 DUE TO INVOICING LAG.

PROJECT COST ANALYSIS

Original and Current Budgets

The Original Budget reflects the Metro Board adopted Life-of-Project (LOP) Budget which was approved in April 2009 in the amount of \$1,034 million. An additional \$6.0 million was approved by the Metro Board in February 2011 to add the City of LA's Reversible Lanes Project Scope funded by the City of Los Angeles, along with \$8.0 million approved by the Metro Board to add Caltrans drainage system repairs to be funded by Caltrans. The Metro Board approved a decrease in the amount of \$3.4 M for the Reversible Lanes and an increase of \$26.1M for betterments. This brings the total Current Budget to \$1,070.7 million.

Current Budget and Current Forecast

The Current Budget is \$1,070.7 million. Trends 1 through 162 have been approved and are included in the Current Forecast of \$1,070.7 million. Project Budget Change Requests (PBCR) 1 through 7 have been approved and included in the Current Budget.

Commitments

The Commitments increased by \$1.2 million this period primarily for purchase orders associated with Caltrans real estate acquisitions, consulting services, Kiewit change orders, and Metro/Caltrans staff charges. Total Commitments are \$993.3 million.

PROJECT COST ANALYSIS (Contd)

Expenditures

Expenditures are cumulative through March 2013. The expenditures increased by a total of \$16.3 million this period. Expenditures within the construction support phase included Metro and Caltrans project staff and miscellaneous consultant contract services. Costs in the right-of-way categories were for 3rd party Metro staff costs and for third party and utility relocation expenditures. Caltrans right-of-way expenditures for the period included staff charges for right-of-way support and real estate acquisitions. An invoice for Kiewit in the amount of \$13.7 million for the period ending December 31, 2012 was processed by Metro Accounting this period. The \$723.7 million in Project Expenditures to date represents 67.6% of the Current Budget.

FINANCIAL/GRANT STATUS – ORIGINAL SCOPE ACTIVITIES

APRIL 2013

STATUS OF FUNDS BY SOURCE

SOURCE	(A)	(B)	(C)	(D)	(D/B)	(E)	(E/B)	(F)	(F/B)
	APPROVED BUDGET	TOTAL FUNDS ANTICIPATED	TOTAL FUNDS AVAILABLE	\$	%	\$	%	BILLED TO FUNDING SOURCE * \$	%
FEDERAL SAFETEA-LU	\$117.000	\$117.000	\$117.000	\$117.000	100%	\$51.602	44%	\$51.602	44%
FEDERAL ARRA	\$189.900	\$189.900	\$189.900	\$189.900	100%	\$189.900	100%	\$189.900	100%
STATE CMIA	\$614.000	\$614.000	\$614.000	\$584.149	95%	\$434.971	71%	\$332.652	54%
STATE TCRP	\$90.000	\$90.000	\$90.000	\$90.000	100%	\$35.006	39%	\$35.006	39%
STATE RSTP	\$10.100	\$10.100	\$10.100	\$10.100	100%	\$10.100	100%	\$10.100	100%
PROPOSITION C 25%	\$13.000	\$13.000	\$13.000	\$2.125	16%	\$2.125	16%	\$2.125	16%
SUB TOTAL FUNDS	\$1,034.000	\$1,034.000	\$1,034.000	\$993.274	96%	\$723.704	70%	\$621.385	60%
CITY OF LA **	\$6.000	\$6.000	\$0.000	\$0.000		\$0.000		\$0.000	
CALTRANS	\$8.000	\$8.000	\$8.000						
TOTAL FUNDS	\$1,048.000	\$1,048.000	\$1,042.000	\$993.274		\$723.704		\$621.385	

NOTE: EXPENDITURES ARE CUMULATIVE THROUGH MARCH 2013.
 * BILLING AMOUNT IS LESS THAN EXPENDITURES AMOUNT DUE TO SYSTEM LAG IN SUBMITTING INVOICES TO CALTRANS.
 ** CONSTRUCTION OF CITY OF LA REVERSIBLE LANES PROJECT.
 *** CONSTRUCTION OF CALTRANS DRAINAGE SYSTEM REPAIRS.

STATUS OF FUNDS ANTICIPATED

FEDERAL SAFETEA-LU: \$117M is available for drawdown for specific phases of the Project as agreed upon in the Cooperative Agreement between Caltrans and Metro.

FEDERAL ARRA: \$189.9M is available for drawdown for specific phases of the Project as agreed upon in the Cooperative Agreement between Caltrans and Metro with consultation with FHWA.

STATE CMIA: State Proposition 1B Bond sales provided \$254.7M to the project. Funds are available for drawdown. The remaining balance of \$359.3M has been allocated and are available for drawdown.

STATE TCRP: \$42M is available for drawdown for specific phases of the Project as agreed upon in the Cooperative Agreement between Caltrans and Metro. The remaining balance of \$48M has been made available by the CTC and is available for drawdown.

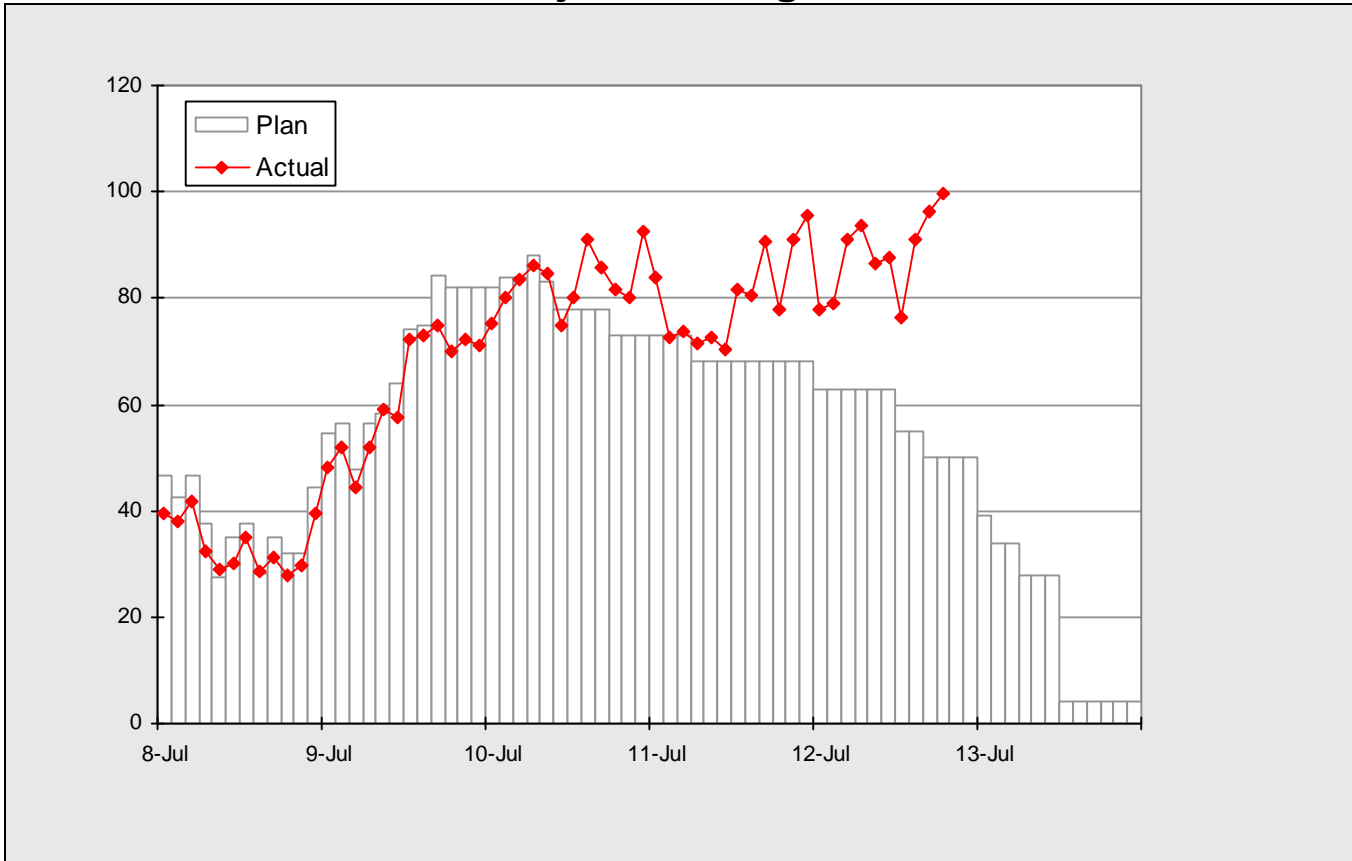
STATE RSTP: \$10.1M is available for drawdown for specific phases of the Project as agreed upon in the Cooperative Agreement between Caltrans and Metro.

PROPOSITION C 25%: The Metro Board approved the allocation of \$13M to the Project.

CALTRANS: Metro Board authorized staff in July 2012 to execute a Memorandum of Understanding between Caltrans Maintenance and Metro for a total amount of \$8M for the cleaning and the reconstruction of Caltrans drainage. Funds are available for drawdown.

STAFFING STATUS

Total Project Staffing - FTEs

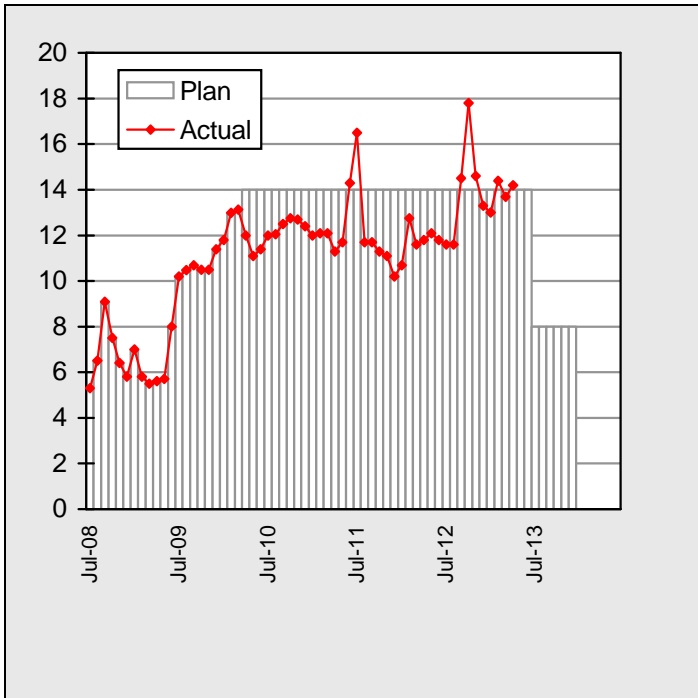


Total Project Staffing

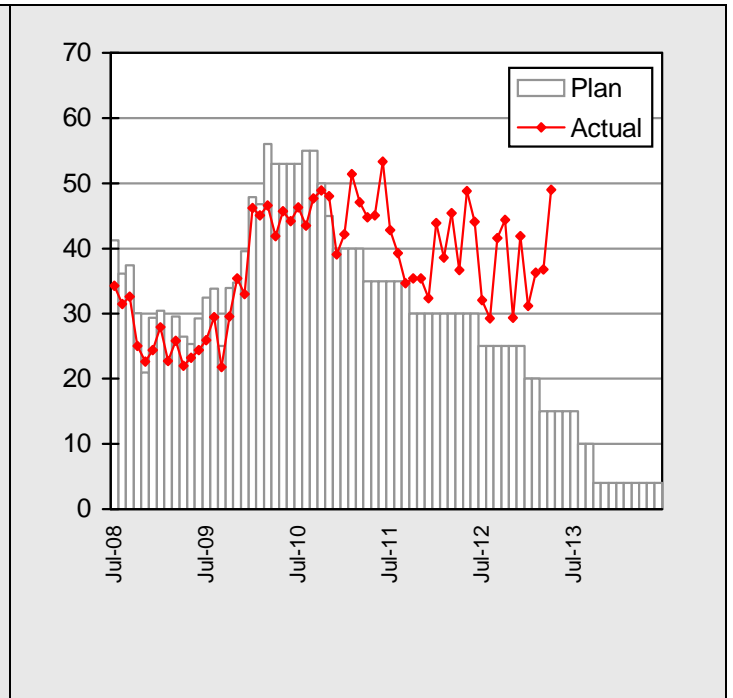
Project Staffing Plan is presently being reassessed as a component of the Cost Schedule Reassessment.

STAFFING STATUS

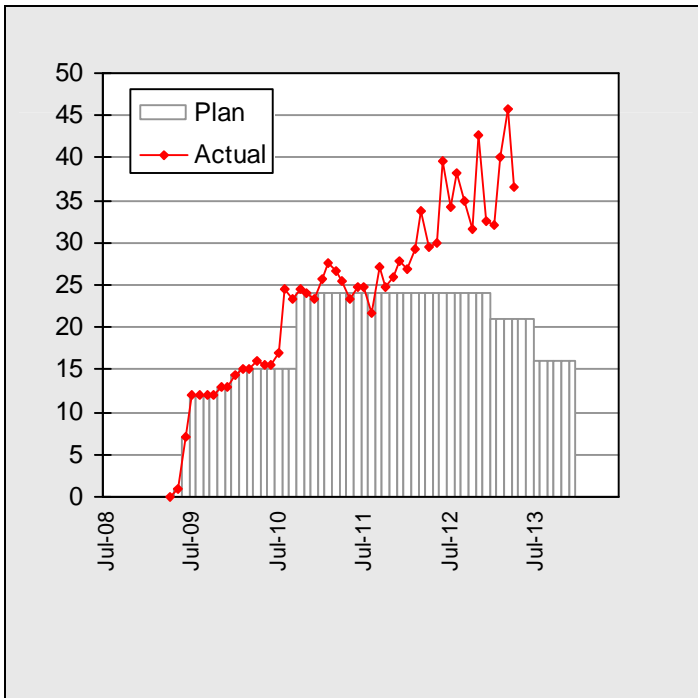
MTA - FTEs



CALTRANS- FTEs



STANTEC - FTEs



REAL ESTATE STATUS

The Real Estate acquisition process is proceeding and the Project is working on obtaining and releasing the past due parcels to the Contractor.

- Parcel 79612 (MWD) – Right-of-Entry (ROE) in place until July 31, 2013. Additional Right-of-Way (ROW) required which has not yet been fully identified and may impact the project schedule.
- ROW Tie-back easements at 1791/1797 – ROW maps for the Getty owned parcels are being reviewed prior to requesting an ROE.
- Parcel 80373 - DWP work at 11390 Thurston –Undergrounding of utilities is required. Caltrans is in process of acquiring the Temporary Construction Easement (TCE) or Right-of-Entry (ROE).
- Parcel 79619 (LACMTA) – Access has been provided but parcel has not been acquired yet. Acquisition will take place after the completion of project. This parcel has no apparent schedule impact.
- Parcel 79692 (Skirball) – ROE has been provided for the additional ROW but the parcel has not been acquired yet. This parcel has no apparent schedule impact.
- TCE for the 22 parcels in the Westwood Hills Area have been extended until December 31, 2012 to facilitate completion of the work. Work was not completed by December 31, 2012. TCEs have been extended to June 30, 2014.
- Parcel 80376/80378 (Formally Parcels 79630/79629) - Additional ROW requirements are needed for grading and drainage. ROE from Sanitation has been obtained and Caltrans is currently working with County for the ROE. ROEs for Clear and Grub have been obtained.
- Additional TCEs are required to modify the existing drainage system at Curtis School – Caltrans is in process of acquiring the TCE.
- Permanent and Temporary easements are required at the Leo Baeck Temple to install signal foundation at Getty Center Drive and Sepulveda – Caltrans is in process of acquiring TCE or ROE.

ENVIRONMENTAL STATUS

- Ongoing coordination with Santa Monica Mountains Conservancy (SMMC) and National Park Service on wildlife crossings and the redesign of NB Getty on-ramp and the associated wildlife culvert. The project provided direction to the Contractor to keep the on/off ramps in their existing location. Further coordination will be required with SMMC and NPS regarding this project change and will be addressed in the Environmental Addendum. Received a commitment letter from SMMC regarding the use of mitigation funds committed for the project for a new trail project in Mission Canyon, Preparation of a Cooperative Agreement between Caltrans and SMMC is in process to transfer mitigation funds to SMMC.
- Ongoing preparation of an Environmental Addendum for changes associated with the final design of the N/B Getty on-ramp. Awaiting traffic analysis for maintaining ramps at their existing location. A separate new project has been programmed to modify existing ramps and is currently in the Project Initiation Document Phase. Environmental Addendum pending completion of traffic accident data analysis.
- Ongoing coordination regarding landscaping along Sepulveda Blvd. between Constitution and Sunset and required mitigation associated with tree removal from City and State R/W. Caltrans, Metro and LABSS continue to discuss outstanding tree removal permits and tree replacement plans.

COMMUNITY RELATIONS STATUS

- Distributed construction notices for the following construction activities: full northbound directional closure for median work, full Sepulveda closure between Ohio and Wilshire for eastbound Wilshire on-ramp to northbound 405 Bridge, northbound and southbound nightly lane reductions for median work, Beloit Avenue closure for onramp work, bicycle path construction closure, Wilshire Blvd. closure from Sepulveda to Bonsail for southbound off-ramp to eastbound Wilshire, Santa Monica on-ramp southbound work, Sepulveda lane reductions at Constitution, daily closure of Moraga northbound 405 off-ramp for construction of retaining wall, construction on Montana and Sepulveda to build disabled access ramps on sidewalk, jack and bore work for Best Management Practices System 33 at Constitution and Church Lane, 38 hour closure of Sunset Blvd. off-ramp from northbound 405 for removal of Chevron line, full nighttime closure of Sepulveda from Montana to Moraga for eastward shift of Sepulveda Blvd. and re-opening of Sepulveda Way and demolition work at Church Lane Bridge, one lane reduction on westbound Sunset Blvd, for utility, traffic signal and repaving work at north Thurston Avenue, Chevron grouting work on abandoned line from Montana to Moraga, nighttime closure of 3 consecutive northbound on-ramps, Skirball, Getty and Moraga, Bel Air Crest Bridge area grading, Mulholland Bridge concrete pour, Sherman Oaks and Valley Vista sound wall construction and northbound Skirball ramps traffic switch.
- Participated in the following meetings: Elected Officials Briefing, Global Traffic Management Meeting, Critical Issues Meeting, South Brentwood Homeowners Meeting, Community Meeting at Skirball Center, 1720/30 Public Art, Mission Canyon Meeting and Sherman Oaks Homeowners Association Meeting.
- Coordinated the following work activities: Northbound Santa Monica on-ramp reconfiguration traffic, signage and k-rail, request for Local Access Only – Glenroy and Sunset and Moraga and Sepulveda, request for speed trailer by Village Bel Air and Keep Clear striping on Sepulveda, request for signage on mainline announcing ramp closure and full nighttime closure of Sepulveda, Sherman Oaks and Valley Vista community landscaping concerns, Sherman Oaks construction noise impacts, vehicle damage claims, advance warning freeway signage, traffic impacts due to new southbound Skirball ramps, and calendar of events in Mulholland Segment for upcoming school graduations.
- 4,954 followers on Twitter.
- 18,677 likes on Facebook.
- 45,692 page views on Website.

QUALITY ASSURANCE STATUS

- Metro Quality participated in:
 - Four Pre-Activity Meetings.
 - Two Joint Project Quality Meeting
- Thirty Nonconformance Reports (NCRs) were issued this month.
- Twenty-one Deficiency Reports (DRs) were issued this month.

SAFETY AND SECURITY STATUS

- There were three recordable injuries on the Project during the month of February 2013, one of which resulted in one day away from work for the employee.
- Safety Staff participated in pre-activity (readiness review) meetings to ensure compliance with approved Work Plans and contract specifications.
- Construction activities are monitored during day and night shifts to ensure contractor compliance with contract specifications.
- Safety staff attended weekly Progress Meeting, Foreman's Weekly Safety Meetings and other project meetings to evaluate Contractors Safety Program compliance with contract requirements.
- February Contractor Work Hours (Design & Construction): 196,938
- Contractor – Project to Date Work Hours (Design & Construction): 5,308,628
- Total Project to Date Work Hours (Contractor & the IPO Staff): 5,850,641
- Project to Date Recordable Injury Rate: 0.7 (Twenty-one Recordable Injuries) (each rate is per 200,00 work hours)
- Project to Date Total Time Away Injury Rate: 0.3 (Ten Time Away From Work Injuries)
- Project to Date Total Days Away Rate: 17.1 (499 Days Away From Work)
- Metro Construction Safety is once again providing Contract Compliance oversight during both day and night shifts.

THIRD PARTY AGREEMENT STATUS

Third Party	Type of Agreement	Forecast Execution Date	Required Need Date	Status/ Comments
City of Los Angeles	MCA	11/13	6/09	A stand-alone Master Cooperative Agreement (MCA) between the City of Los Angeles and LACMTA is currently being drafted for the I-405 Project.
Los Angeles County Department of Public Works/Los Angeles Flood Control District	MCA	Cancelled	Cancelled	On advice of County Counsel, LACMTA is not required to enter into a Master Cooperative Agreement with the Los Angeles County Department of Public Works/Los Angeles Flood Control District since the I-405 Project is a State Project, not a LACMTA Project.
Utility Owners	Utility Agreements	Various	Various	Caltrans style Utility Agreements (similar to MTA Work Order Authorizations) will be completed as relocation plans are approved for each location.

CHRONOLOGY OF EVENTS

May 18, 2007	The Draft Environmental Impact Report (EIR)/Environmental Impact Statement (EIS) is issued.
May 22, 2007 to October 1, 2007	Public review of draft EIS.
February 29, 2008	The Final Environmental Impact Report (EIR)/Environmental Impact Statement (EIS) is issued.
March 10, 2008	The Final Environmental Impact Report (EIR)/Environmental Impact Statement (EIS) errata with U. S. General Services Administration (GSA) comments is issued.
March 14, 2008 to April 14, 2008	Public review of Final EIS.
April 25, 2008	Record of Decision (ROD) approved.
October 10, 2008	LACMTA issued Invitation For Bid (IFB) for the project.
February 20, 2009	Project bids opened.
April 23, 2009	LACMTA Board authorized the Chief Executive Officer to award Design-Build Contract C0882 to Kiewit Pacific Co.
April 23, 2009	LACMTA Board approved establishing a budget of \$1.034 billion for project 405523.
April 23, 2009	LACMTA awarded Contract C0882 to Kiewit Pacific in the amount \$694,156,000 to include Schedules A, C, and H (Option 4).
April 29, 2009	LACMTA issued a revised NOA to Kiewit Pacific in the amount \$720,922,000 to include Schedules A, C, E (Option 1), F (Option 2), G (Option 3), and H (Option 4).
June 2, 2009	LACMTA issued Notice to Proceed to Kiewit Pacific for the Design-Build Contract C0882.
August 31, 2009	Contract Commencement Date.
September 24, 2009	Kiewit Pacific submitted the Project Baseline Schedule.
October 14, 2009	Project Design Quality Management Plan approved.

CHRONOLOGY OF EVENTS (Cont'd)

December 14, 2009	Project Quality Management System approved.
January 20, 2010	Project Baseline Schedule was approved.
January 27, 2010	Roadway Restriping commenced.
March 12, 2010	Major Project Permits were obtained; Permit 401 – Water Quality Control Board, Permit 404 – U.S. Army Corps of Engineers, and Permit 1600 – California Department of Fish & Game.
May 31, 2010	The Project completed one year without a Recordable Injury.
July 23, 2010	Sunset Bridge major demolition of the south side top deck and center column.
August 2, 2010	Commenced construction on Bridge 4a/b.
August 16, 2010	Commenced ExxonMobil 16" utility relocation at Bridge 16.
August 20, 2010	Operating Engineers Local 12 initiate labor action by striking.
August 24, 2010	Completed ductbank work on Sepulveda for DWP utility undergrounding.
August 24, 2010	Commenced construction of Walls 1720/1730.
August 24, 2010	ITS Backbone is cut.
September 7, 2010	DWP started pulling wires for utility undergrounding on Sepulveda.
September 9, 2010	Operating Engineers Local 12 Labor action is settled and strike ends.
September 13, 2010	Completed the excavation of Roadway at 1685/1691.
September 15, 2010	Completed the removal of Wall 1665.
September 18, 2010	Completed installation of Temporary walkway at Skirball Bridge.
September 28, 2010	Pioneer access to Sunset on-ramp, Bridge 15 Abutment 1.

CHRONOLOGY OF EVENTS (Cont'd)

October 12, 2010	Began excavation of Sunset Bridge 16 Abutment 1 Footing.
October 12, 2010	Began demolition of Skirball Bridge 21.
October 15, 2010	Completed demolition Skirball Bridge 21.
October 15, 2010	Began driving piles at Santa Monica Bridge 4.
October 15, 2010	Installed Beams at Sunset Bridge 16, Bent #2.
October 15, 2010	Began driving piles on Santa Monica Bridge 4.
October 19, 2010	Completed demolition of Sunset Bridge 16, Abutment 4.
October 21, 2010	Installed beams at Sunset Bridge 15 On Ramp, Abutment 1.
October 22, 2010	Began Demolition of Sunset Bridge 16, Abutment 1.
October 22, 2010	Installed Piles at Wall 1720.
October 25, 2010	Began Excavation at Walls 1685/1691.
October 28, 2010	Began the relocation of overhead power lines at Ohio Ave Bridge 5.
October 28, 2010	Clear and grub area at Wall 1746.
November 12, 2010	Completed demolition of soundwall, barrier rail, and overhang at Bridge 13.
November 15, 2010	Completed installation of SOE at Abutment 1 NB at Bridge 4 Santa Monica.
November 15, 2010	Completed demolition of existing ExxonMobil 16" Oil Pipeline.
November 17, 2010	Completed excavation of CIP at Wall 1640.
November 18, 2010	Began excavation at Wall 1635.
November 29, 2010	Began Excavation at Bridge 13.
November 30, 2010	Began relocation of SCE underground vault.

CHRONOLOGY OF EVENTS (Cont'd)

December 7, 2010	Began driving piles at Bridge 13 - Montana Avenue UC.
December 14, 2010	Completed Pile driving at Abutment 1 Bridge 16 Sunset OC.
December 15, 2010	Completed the installation of new power poles and raised the utility wires at Bridge 5 - Ohio Avenue.
December 16, 2010	Completed piles at abutments 1 and 2 for Bridge 13 Montana Ave UC.
December 17, 2010	Began installation of SOE beams at Bridge 15 Sunset on-ramp.
January 3, 2011	Began Construction of Piers and Columns at Bridge 16.
January 11, 2011	Began Construction Activities at Bridge 5.
January 13, 2011	Began Construction Activities at Bridge 12.
January 17, 2011	Began Installation of Footings and Pile Caps at Bridge 16.
February 1, 2011	Began Construction Activities at Bridge 21 – Skirball Center Drive.
February 14, 2011	Began Field Work relocating Storm Drain at Veterans Administration (VA).
February 21, 2011	Began Field Work relocating Chevron Oil Pipeline at Bridge 23 – Sepulveda UC.
February 23, 2011	Began Construction Activities at Bridge 15 – Sunset On-Ramp.
February 25, 2011	Completed Drilling and Placing Beams at NB Abutments 1 & 2 at Bridge 12 – Constitution UC.
February 28, 2011	Completed Pouring Columns at Bent 3, Bridge 16 – Sunset OC.
March 2, 2011	Began Field Work relocating LADWP 4" Waterline at Valley Vista.
March 2, 2011	Completed Driving 14" Square Piles at Bridge 3 Abutment 1.
March 15, 2011	Began Field Work relocating So Cal Gas Line at Wall 1746.

CHRONOLOGY OF EVENTS (Cont'd)

March 18, 2011	Completed Setting Soldier Beams at Bridge 15 Bent 2 & 3 Mainline.
March 23, 2011	Began Field Work Encasing Sewer Lines 401-403 at Walls 1720, 1730 and 1746.
March 31, 2011	Completed Setting and Backfilling Wall Panels at Wall 1942B.
April 4, 2011	Began Installation of Bent 2 & Bent 3 Columns at Bridge 21 Skirball Center Drive OC.
April 5, 2011	Began Installation of Storm Drain at Walls 1720 and 1730.
April 10, 2011	Completed Installation of Girders at Bridge 13 Montana Ave UC.
April 22, 2011	Completed Bridge 9 Wilshire Blvd. UC demolition for widening.
April 25, 2011	Began Work Relocating Shell Oil Line at Bridge 23 Sepulveda UC.
May 2, 2011	Began Relocation of Area 2 Sewer Lines # 201-203.
May 6, 2011	Completed Setting Girders at Southside of Bridge 16 Sunset OC.
May 11, 2011	Began Construction Work on Bridge 3 Olympic Blvd.
May 25, 2011	Completed Tie Back Installation at Walls 1720 and 1730.
June 3, 2011	Completed Girder Installation on the North Side of Bridge 21 Skirball OC.
June 13, 2011	Began Installation of Precast Deck Panels on Bridge 16 Sunset OC.
June 24, 2011	Began Demolition of Existing Walls 1720 and 1730 along Sepulveda Blvd.
June 30, 2011	Completed Installation of Precast Deck Panels on Bridge 16 Sunset OC.

CHRONOLOGY OF EVENTS (Cont'd)

July 6, 2011	Began Relocation of LADWP Overhead Power Lines at Mulholland Bridge.
July 13, 2011	Completed installation of Void Slab Deck at Bridge 12 Constitution UC.
July 14, 2011	Completed Pouring Diaphragms 1, 2, and 3 at Bridge 21 Skirball OC.
July 16, 2011	Began Demolition of South Side of Bridge 22 Mulholland OC.
July 17, 2011	Completed Demolition of South Side of Bridge 22 Mulholland OC.
July 20, 2011	Completed Installation of Pre-cast Girders at Bridge 4SB Santa Monica UC.
July 26, 2011	Began Driving Piling at Bridge 8 NB from EB Wilshire, Bent 8.
August 1, 2011	Began installation of forms and rebar for Top Deck at Bridge 21, Skirball Center Drive.
August 3, 2011	Began work on the Interchange Ramp from Westbound I-10 to Northbound I-405.
August 6, 2011	Began work installing Top Deck at Bridge 4 Santa Monica Blvd.
August 24, 2011	Completed pouring the Top Deck at Bridge 13, Montana Ave.
August 26, 2011	Completed installation of Footing & Pile Cap/Abutment-Wingwalls/Bridge Bearing Bridge 3 Olympic Blvd.
August 31, 2011	Completed pouring the Top Deck at South Side of Bridge 16, Sunset Blvd.
September 15, 2011	Completed installation of Top Deck and Diaphragm on Bridge 16, Sunset Blvd.
September 16, 2011	Completed pouring the Top Deck at Bridge 21, Skirball Center Drive.
September 23, 2011	Began construction of LADWP Power Utilities undergrounding ductbank between Stations 1740 and 1760.

CHRONOLOGY OF EVENTS (Cont'd)

September 27, 2011	Completed pouring curb and gutter on west side of Bridge 16, Sunset Blvd.
September 29, 2011	Completed pouring Lateral Retaining Walls #6, #7, and #8 at Retaining Wall 1720.
October 14, 2011	Completed pouring footing for Bent 2 at Bridge 22, Mulholland Drive.
October 17, 2011	Began installation of Bent 2 Forms at Bridge 22, Mulholland Drive.
October 18, 2011	Began construction activities at Bridge 18, Bel Air Crest.
October 22, 2011	New Bridge 16, Sunset Blvd. South Side opened to vehicle traffic.
October 27, 2011	Completed pouring Abutment 1 at Bridge 22, Mulholland Drive.
November 1, 2011	Began demolition of Bridge 16 Sunset Blvd. north side.
November 7, 2011	Began installation of CIDH Piles for I-10 Connector.
November 9, 2011	Completed demolition of Bridge 16 Sunset Blvd. north side.
November 22, 2011	Received the VA License to Enter agreement.
November 22, 2011	Completed pouring Bridge 22 Mulholland OC Bent 2 Columns.
November 22, 2011	Completed pouring Bridge 5 Ohio NB Abutments 1 & 2.
December 1, 2011	MSE Wall 1897 along NB Sepulveda Blvd. south of Skirball Center Drive ruptures. Kiewit stops work on all MSE Walls throughout the project and begins investigation into MSE Wall deficiencies.
December 1, 2011	Began 2 nd pouring of Bridge 22 Mulholland Abutment 1.
December 8, 2011	Completed subgrade for NM Connector.
December 17, 2011	Began installation of Precast Girders at Bridge 5A Ohio Ave.
December 19, 2011	Began installation of falsework beams for Bridge 15 Sunset on-ramp.

CHRONOLOGY OF EVENTS (Cont'd)

December 19, 2011	Began driving piles for Bridge 16 Sunset Blvd. Bent 3.
January 4, 2012	Began De-construction of MSE Wall 1738A.
January 9, 2012	Began De-construction of MSE Wall 1665.
January 16, 2012	Completed demolition of the I-405 median barrier at Mulholland Bridge and began erection of Falsework.
January 19, 2012	Began pouring footings for Soundwalls at Retaining Walls 1720 and 1730.
January 20, 2012	Completed pouring column # 1 @ Sunset Blvd. Bridge.
January 25, 2012	Began De-construction of MSE Wall 1634.
January 27, 2012	Kiewit stopped work on all Soil Nail Walls due to developing cracks, pending investigation.
January 31, 2012	Poured columns at Bel Air Crest Bridge.
February 13, 2012	Construction activities are started in Area 5 at Bridge 18 Getty Center UC and Bridge 19 Sepulveda UC.
February 15, 2012	De-construction of MSE Wall 1738A at Sunset NB Off-Ramp is completed.
February 18, 2012	Piers and Columns are poured for Bridge 16 Sunset Blvd.
February 18, 2012	LADWP completes installation of new underground cabling in ductbank along Sepulveda Blvd and Wilshire Ave. Final paving of Sepulveda trench is completed.
February 28, 2012	Kiewit submits notification to LACMTA that all remaining MSE Walls, with the exceptions of completed MSE Walls 1619 and 1942B will be de-constructed.
March 2, 2012	Full NB Freeway Closure at Mulholland Bridge to install Falsework Girders.
March 6, 2012	Caltrans identifies a potential Safety Concern during Mulholland Bridge Falsework Girder Installation on the SB Side and orders girders to be removed. Caltrans issues Stop Work Order pending review of Girder Installation Process.

CHRONOLOGY OF EVENTS (Cont'd)

March 8, 2012	Caltrans completes review of Girder Installation Process and authorizes resumption of installation of Falsework Girders at Mulholland Bridge. SB Side Falsework Girders are installed.
March 22, 2012	Concrete Girders are installed at Bridge 5B Ohio UC SB side.
April 7, 2012	Kiewit completes installation of Mulholland Bridge (South Side) Sheet Decking and begins installation of structural rebar.
April 10, 2012	Kiewit resumes construction of MSE Walls. Construction of Wall 1672 new leveling pad is started.
April 14, 2012	Kiewit begins installation of top deck and diaphragm structural rebar at Bridge 4 Santa Monica UC.
April 20, 2012	Kiewit pours concrete top deck, curb, and gutter at Bridge 9 Wilshire UC.
May 1, 2012	Begin installation of Concrete girders at Bridge 16 Sunset OC North Side.
May 4, 2012	Kiewit resumes construction of MSE Walls using an approved new Wall Panel Vendor and Construction Plan. Construction begins at MSE Wall 1672 along Sepulveda Blvd. north of Wilshire Blvd.
May 4, 2012	Completion of installation of Concrete Girders at Bridge 16 Sunset OC North Side.
May 18, 2012	Construction of MSE Wall 1808 along Sepulveda Blvd. north of Getty Center Drive is started using new Wall Panels and Construction Plan.
May 24, 2012	Structural construction is started within the GSA Property. Construction of Bridge 7 Bent 3 is started.
May 31, 2012	Construction of MSE Wall 1686 along Sepulveda Blvd. north of Constitution Drive is started using new Wall Panels and Construction Plan.

CHRONOLOGY OF EVENTS (Cont'd)

June 2, 2012	NW1 Ramp from WB I-10 to NB I-405 is opened for traffic.
June 6, 2012	GSA Microwave Security System is installed.
June 7, 2012	Bridge 7 NB I-405 to EB Wilshire Off-ramp Columns for Bents 3 and 4 are constructed on GSA Property.
June 22, 2012	90-Day Shutdown of Bridges 10 & 11 NB I-405 to WB Wilshire and WB Wilshire to NB I-405 commenced.
June 27, 2012	Demolition of existing Bridges 10 & 11 is completed.
July 15, 2012	Bridge 21 Skirball Center Drive, North side, is opened to traffic.
July 20, 2012	Bridge 22 Mulholland Drive, Top Deck is poured.
July 21, 2012	Bridges 10 & 11 Pre-cast Girders are installed.
July 30, 2012	Bridge 21 Skirball Center Drive, South Side, Demolition is started.
August 3, 2012	Bridge 21 Skirball Center Drive, South Side, Demolition is Completed.
August 10, 2012	Bridges 10 & 11 Top Deck is Poured.
August 23, 2012	Bridge 16 Sunset Blvd. Top Deck is Poured.
August 31, 2012	Bridges 10 & 11 are Opened for Traffic.
September 4, 2012	Bridge 7 Falsework installation begins.
September 24, 2012	Bridge 16 is fully opened for traffic.
September 24, 2012	Bridge 22 South Side is opened for traffic.
September 28, 2012	Began demolition of the north side of Mulholland Bridge 22.
September 30, 2012	Complete demolition of the north side of Mulholland Bridge 22.
October 1, 2012	Began construction activities for Bridge 17, Church Lane UC.

CHRONOLOGY OF EVENTS (Cont'd)

October 1, 2012	Began construction activities for Bridge 22, Mulholland OC north side.
October 15, 2012	MSE Wall 1897 reconstruction is completed.
October 19, 2012	Bridge 15 Sunset NB On-ramp, top deck is poured.
October 23, 2012	RW 1720 punch list work begins.
November 4, 2012	Re-aligned Sepulveda Blvd. to the east at Bronwood Apartments.
November 6, 2012	Begin construction activities for Bridge 14 Sunset NB Off-ramp.
November 8, 2012	Bridges 6A and 6B SB Off-ramp to EB Wilshire abutments poured.
November 28, 2012	Completed re-striping and realignment of Sepulveda Blvd. to the east at walls 1720 & 1730.
November 29, 2012	Completed pouring Top Deck at Bridge 1 I-10 Connector.
December 4, 2012	Completed installation of Pre-Cast Girders at Bridge 2 Exposition.
December 6, 2012	Sepulveda Blvd. is restriped and realigned from Montana Avenue to Bridge 14 NB Sunset Off-Ramp.
December 20, 2012	Completed pouring Top Deck at Bridge 18 Getty Center Drive NB and SB.
December 21, 2012	Completed girder installation at Bridge 6A and 6B SB Wilshire Off-Ramp.
January 4, 2013	False work for Bridge 7 is completed allowing construction of CIP Box Girder to progress from abutment to abutment.
January 4, 2013	Completed installation of 10' diameter CIDH Piles for Bridge 14 Construction of foundation piles is started.
January 15, 2013	Completed pouring outside stems for Bridge 8.

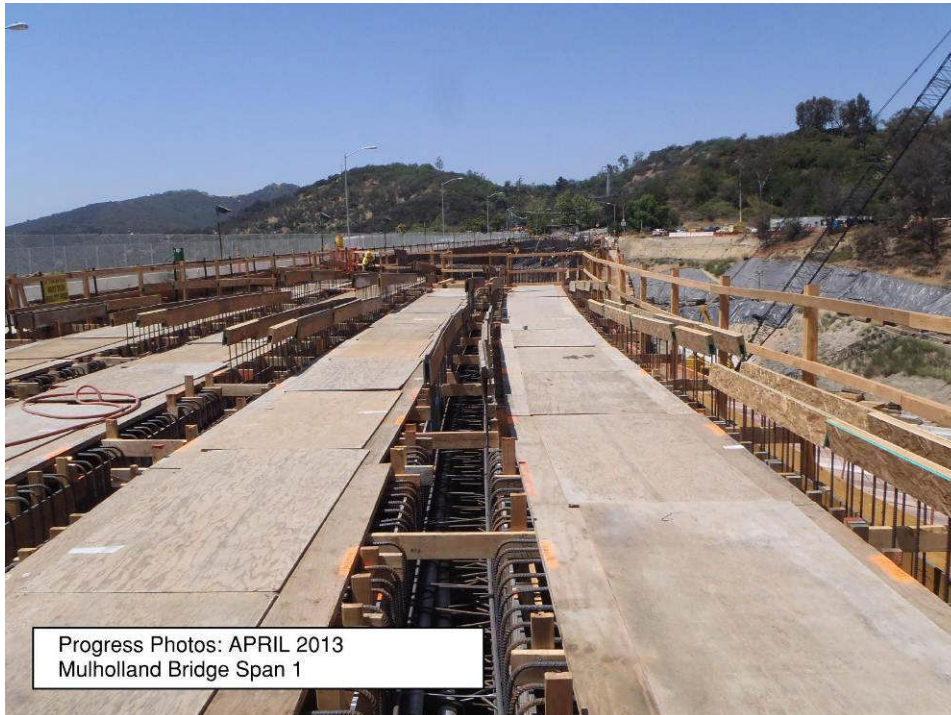
CHRONOLOGY OF EVENTS (Cont'd)

January 23, 2013	Completed installation of top deck metal decking for Bridge 6A.
February 3, 2013	Opened new SB 405 On-ramp from Skirball Center Drive.
February 11, 2013	Began installation of Falsework for Mulholland Bridge north side.
February 21, 2013	Opened new SB 405 On-ramp from EB Wilshire Blvd.
February 22, 2013	Opened new NB 405 On-ramp from Cotner Ave. at Olympic Blvd.
March 8, 2013	Began 14-day closure of SB I-405 to WB Wilshire Off-ramp to allow construction of new Off-ramp.
March 16, 2013	Completed construction of new SB I-405 to WB Wilshire Off-ramp and re-opened the Off-ramp 6 days early.
March, 22, 2013	Began forming bottom deck of north side of Bridge 22, Mulholland OC.
March 25, 2013	Opened new Bridge 1, I-10 EB to I-405 NB, and began demolition of existing Bridge 2 Span 4 to Abutment 9.
April 6, 2013	Completed paving on NB side of I-10 to I-405 Interchange Area.
April 9, 2013	Completed Bridge 22, Mulholland Dr. OC, Falsework installation.
April 18, 2013	Completed Bridge 7, NB 405 to EB Wilshire Off-ramp, Top Deck installation.

CONSTRUCTION PHOTOGRAPHS



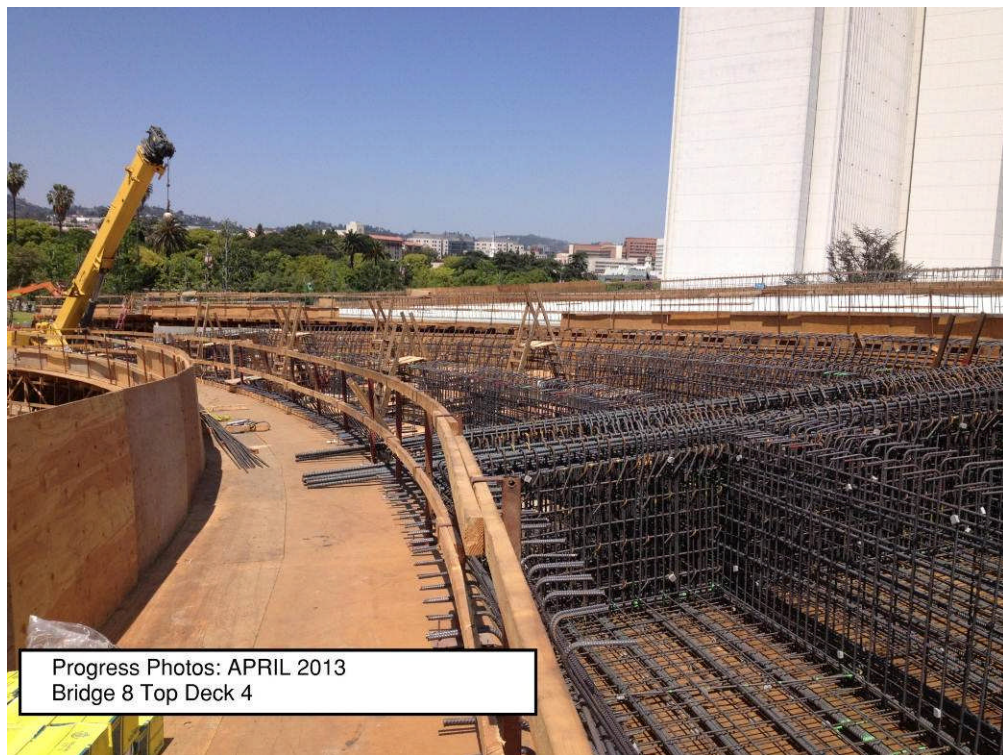
CONSTRUCTION PHOTOGRAPHS



CONSTRUCTION PHOTOGRAPHS



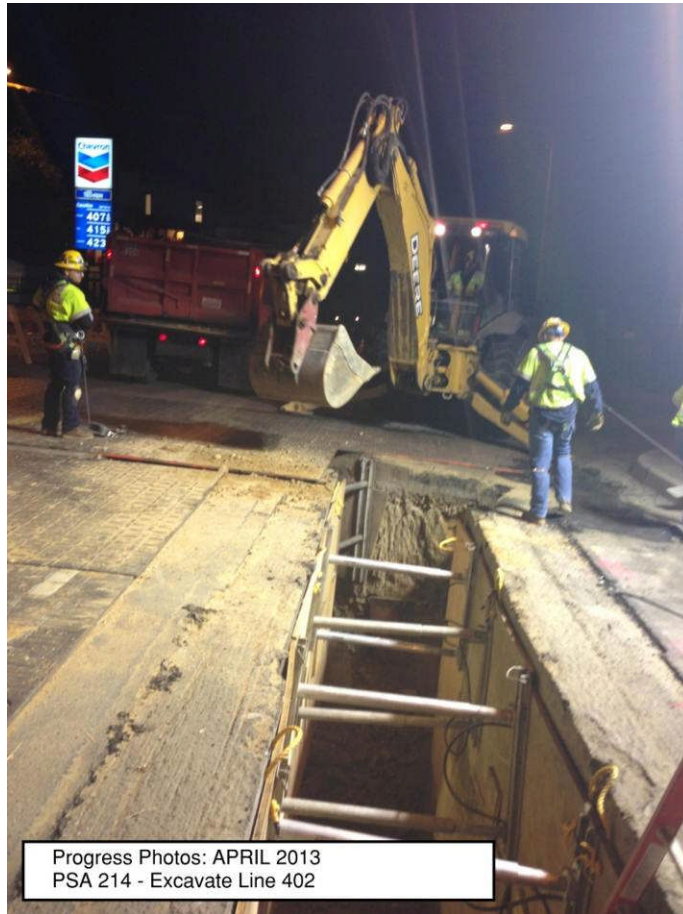
CONSTRUCTION PHOTOGRAPHS



CONSTRUCTION PHOTOGRAPHS



CONSTRUCTION PHOTOGRAPHS



Progress Photos: APRIL 2013
PSA 214 - Excavate Line 402

APPENDICES

COST AND BUDGET TERMINOLOGY

APPROVED BUDGET: The Approved Project Budget as established by Metro Board of Directors at the time it authorizes Construction Project Management Division to commence full design and construction of the project (Project Adoption).

CURRENT BUDGET: The Original Budget plus all budget amendments approved by formal Metro action. Also referred to as Approved Budget.

CURRENT FORECAST: Evaluation of costs to go combined with actual expenditures.

COMMITMENTS: The total of actual contract awards, executed change orders or amendments, approved work orders of Master Cooperative Agreements, offers accepted for purchase of real estate, and other Metro actions which have been spent or result in the obligation of specific expenditures at a future time.

EXPENDITURES: The total dollar amount of funds expended by Metro for contractor or consultant invoices, third party invoices, staff salaries, real estate and other expenses that is reported in Metro's Financial Information System (FIS).

PROJECT APPROVAL & ENVIRONMENTAL DOCUMENTS: Costs for agency staff and consulting contracts leading to project approval and environmental clearances.

PLANS, SPECS. & ENGINEERING: Agency staff and consulting contract costs between the initial project approval and environmental clearances but prior to start of construction.

RIGHT-OF-WAY SUPPORT: Costs for agency staff involved in real estate appraisal and parcel purchase activities and agency staff costs involved in utility relocations and third party agreements. Includes real estate appraisal costs.

CONSTRUCTION SUPPORT: Agency staff and consulting contract costs occurring during the construction phase of the project.

CONSTRUCTION: Costs for highway construction, bridge and on/off ramp construction and modifications, retaining wall and sound wall construction. Includes final design costs by Design/Build Contractor.

RIGHT-OF-WAY CAPITAL: Costs for real estate parcel purchases and utility relocations costs after approval of utility company agreements. Includes costs for Master Cooperative Agreements after approval by agencies.

APPENDIX

LIST OF ACRONYMS

ARRA	American Recovery & Reinvestment Act
AWIS	Automated Work Zone Information Systems
CADD	Computer Aided Drafting and Design
CALTRANS	California Department of Transportation
CCTV	Closed Circuit Television
CD	Calendar Day
CDFG	California Department of Fish and Game
CEQA	California Environmental Quality Act
CM	Construction Manager
CMAC	Congestion Mitigation Air Quality
CMIA	Cash Management Improvement Act
CMS	Changeable Message Signs
CN	Change Notice
CO	Change Order
COE	Corps of Engineers
COLA	City Of Los Angeles
CPM	Critical Path Method
CPUC	California Public Utilities Commission
CR	Camera Ready
CTC	California Transportation Commission
D-B	Design-Build
D-B-B	Design-Bid-Build
DD	Design Development
DEIR	Draft Environmental Impact Report
DR	Deficiency Report
DWP	Department of Water and Power
EIR	Environmental Impact Report
EIS	Environmental Impact Statement
FD	Final Design
FEIR	Final Environmental Impact Report
FHWA	Federal Highway Administration
FIS	Financial Information System
FOCT	Fiber Optics Cable Transmission System
FTE	Full Time Equivalent
GDSR	Geotechnical Design Summary Report
GSA	General Services Administration
GSRD	Gross Solids Removal Devices
HAR	Highway Advisory Radio
HOV	High Occupancy Vehicle
IFB	Invitation for Bid
IPO	Integrated Project Office
ITS	Intelligent Transportation Systems

APPENDIX
LIST OF ACRONYMS (Continued)

LA	Los Angeles
LABOE	Los Angeles Bureau of Engineering
LACFCD	Los Angeles County Flood Control District
LADOT	Los Angeles Department of Transportation
LADPW	Los Angeles Department of Public Works
LADWP	Los Angeles Department of Water and Power
LARTMC	Los Angeles Regional Transportation Management Center
LFAT	Local Field Acceptance Test
LNTP	Limited Notice To Proceed
LONP	Letter Of No Prejudice
LOP	Life of Project
MCA	Master Cooperative Agreement
METRO	Los Angeles County Metropolitan Transportation Authority
MIS	Major Investment Study
MOT	Maintenance of Traffic
MPSR	Monthly Project Status Report
MSE	Mechanically Stabilized Earth
MVDS	Microwave Vehicle Detection System
MVP	Maintenance Vehicle Pullouts
MWD	Metropolitan Water District
N/A	Not Applicable
NCR	Non-Conformance Report
NEPA	National Environmental Quality Act
NHS	National Highway System
NOA	Notice of Award
NTE	Not to Exceed
NTP	Notice To Proceed
NTSC	National Television System Committee
P6	Primavera Project Planner® (scheduling software)
PC	Project Control
PE	Preliminary Engineering
PIP	Project Implementation Plan
PM	Project Manager
PMA	Project Management Assistance
PMP	Project Management Plan
P&P	Policies & Procedures
PR	Project Report
PS&E	Plans, Specs & Engineering
PSR	Project Study Report
QA	Quality Assurance
QAR	Quality Assurance Report

APPENDIX

LIST OF ACRONYMS (Continued)

QC	Quality Control
QPSR	Quarterly Project Status Report
RFC	Request For Change or Released for Construction (based on context)
RFP	Request For Proposal
RMS	Ramp Metering Systems
ROM	Rough Order of Magnitude
ROW	Right-Of-Way
SIT	System Integration Testing
RSTP	Regional Surface Transportation Program
RWQCB	Regional Water Quality Control Board
SAFETEA-LU	Safe, Accountable, Flexible, Efficient Transportation Equity Act: A Legacy for Users
SCE	Southern California Edison
SONET	Synchronous Optical Network
SOV	Schedule Of Value
SOW	Statement Of Work
SP	Special Provision
TBD	To Be Determined
TCRP	Traffic Congestion Relief Program
TMS/CS	Traffic Monitoring Stations/Count Stations
TPM	Transportation Management Plan
VE	Value Engineering
WBS	Work Breakdown Structure
WP	Work Package