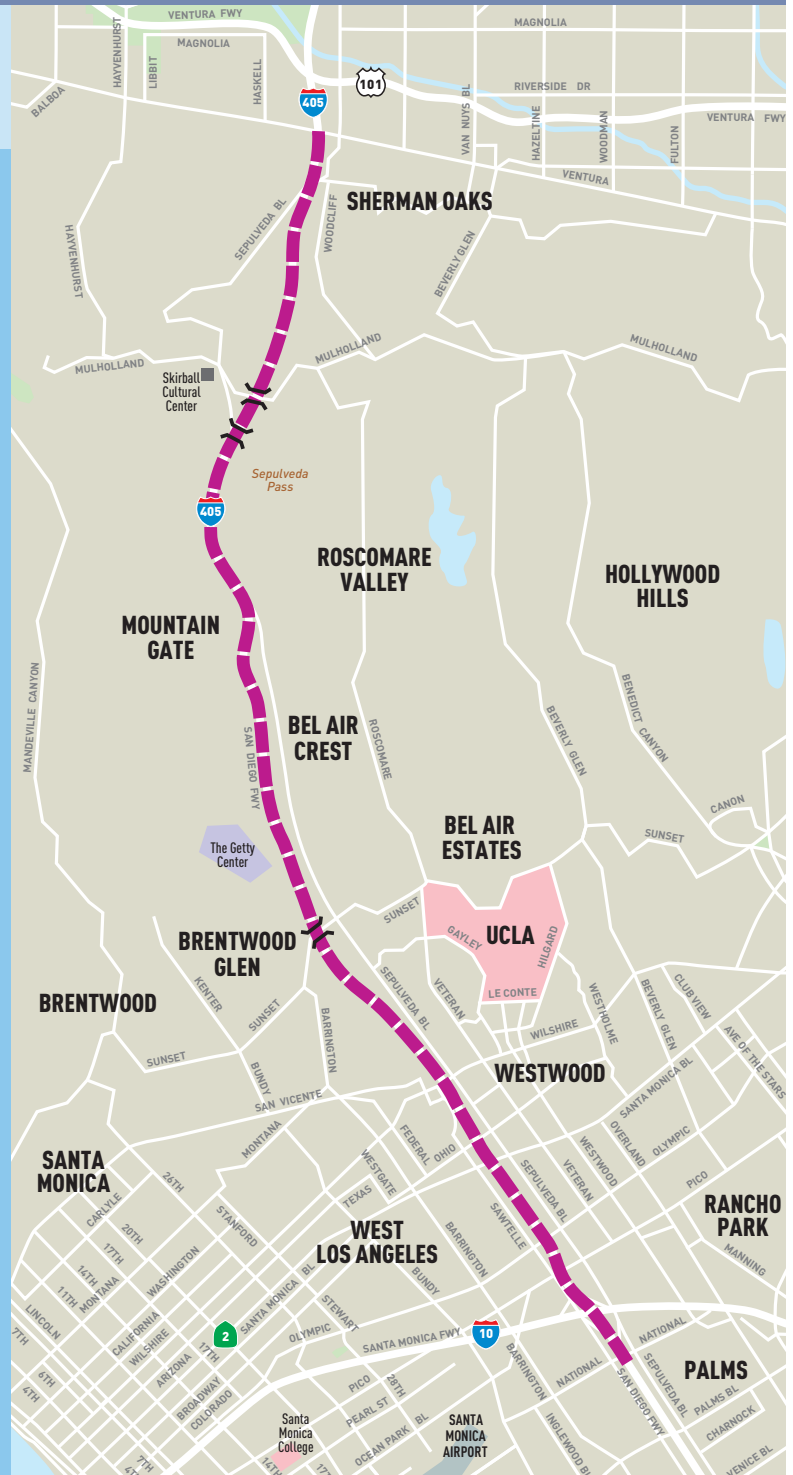




I-405 Sepulveda Pass Improvements Project

MONTHLY PROJECT STATUS REPORT



Metro®



11-00623P1 © 2010 LACMTA

INTERSTATE 405 SEPULVEDA PASS IMPROVEMENTS PROJECT

MONTHLY PROJECT STATUS REPORT

THE PREPARATION OF THIS DOCUMENT HAS BEEN FINANCED IN PART THROUGH GRANTS FROM THE FEDERAL HIGHWAY ADMINISTRATION (FHWA) AND THE AMERICAN RECOVERY AND REINVESTMENT ACT (AARA) AND FUNDS FROM THE STATE OF CALIFORNIA.

FEBRUARY 2013

TABLE OF CONTENTS

	Page No.
Project Overview & Status.....	1-2
Management Issues.....	2-4
Project Status	
• Project Scope.....	5-6
• Schedule	
○ Key Milestones Six-Month Lookahead	7-8
○ Project Summary Schedule	9
○ Critical Path Narrative.....	10
• Project Cost Status.....	11-12
• Financial/Grant Status.....	13
• Staffing.....	14-15
• Real Estate.....	16
• Environmental.....	17
• Community Relations.....	18
• Quality Assurance.....	18
• Safety and Security Status.....	19
• Third Party.....	20
Contract C0882 Status.....	21
Chronology of Events.....	22-34
Construction Photographs.....	35-39
Appendices.....	40-43

PROJECT OVERVIEW & STATUS

The I-405 Sepulveda Pass Improvements Project will add a 10-mile HOV lane and improve supporting infrastructure such as ramps, bridges, and soundwalls on the San Diego Freeway (I-405); while widening lanes from the Santa Monica Freeway (I-10) to Ventura Freeway (U.S. 101). This project will reduce existing and forecasted traffic congestion on the I-405 and enhance traffic operations by adding freeway capacity in an area that experiences heavy congestion. In addition to these modifications, the project will improve both existing and future mobility and enhance safety throughout the corridor. Project benefits include a decrease in commuter time, reduce air pollution, and promote ridesharing. The I-405 Sepulveda Pass Improvements Project features include:

- *Add a 10-mile HOV lane on the northbound I-405 between the I-10 and US-101 freeways*
- *Remove and replace the Skirball Center, Sunset Blvd. and Mulholland Dr. Bridges*
- *Realign 20 on and off ramps*
- *Widen 20 existing overpasses and structures*
- *Construct approximately 18 miles of retaining walls and soundwalls*

Interstate 405 (I-405), also known as the San Diego Freeway, is a north/south route classified as an interstate/interregional loop freeway. It is part of the National Highway System (NHS), originating at the I-5 in Orange County in the City of Irvine and terminating at the I-5 in Los Angeles County, in the City of Los Angeles near the community of Mission Hills.

The design-build contract Notice to Proceed (NTP) was given on 6/2/2009, with commencement of contract time (1550 calendar days) on August 31, 2009. Substantial completion is currently expected to occur in May 2013, with final acceptance of the project required by November 27, 2013.

Reconstruction of the Mechanically Stabilized Earth (MSE) Walls is nearly complete for the ones which were deconstructed.

Kiewit submitted an Impacted Schedule which showed a Substantial Completion date way beyond the contractual completion date. It should be noted that Kiewit and Caltrans/Metro, after exhaustive reviews with technical staff in April-May 2012, developed a schedule that showed completion dates per Area ranging from July 2013 to February 2014. Since that time, Kiewit has added additional 9 months of delay to the dates agreed to in April-May 2012. Metro staff reviewed Area 4 critical path and believe that there is a potential of 2 months of time saving. At this point, further discussion will not help Metro understand how the 9 months were added. Therefore, the Project will proceed with using the new schedule for record and planning purposes, but not for recovery. Project started the Time Impact Analysis and will work with Kiewit to recover schedule time and reduce these delays. At this time, it appears schedule can be reduced by 2 months.

Key project activities for February 2013 include:

- Project has assessed the feasibility of opening the HOV lane early in Segments 1, 2, and 3. Segment 2 is not feasible, Segment 1 appears to be feasible, and Segment 3 is questionable. Project has set June 2013 for opening of General Purpose lane in Segment 1.

PROJECT OVERVIEW & STATUS (Cont'd)

- Executive Partnering started in August–September 2012 and has dictated the Project to work with Kiewit to establish a realistic schedule, irrespective of contractual responsibility for schedule delay. While this appears to be reasonable, Kiewit submitted a new schedule which added significant amount of time to the schedule compared to the one which was developed during the April-May 2012 timeframe. As stated above, Project has allowed Kiewit to use the schedule for construction planning purposes and resolve cost and time impacts to the Project over the next 6-9 months, and with commitments on both sides, recover schedule to mid-2014, or earlier.
- Work at Getty is moving along and Kiewit, Metro, Caltrans, and Getty are close to finalizing scope of work and schedule.
- Estimating process changes are being implemented by Metro. Project will address supervision issues and other inefficiencies at job level.
- Maintenance of Traffic (MOT) will be a concern as the Project is expecting significant concurrent work on Sepulveda Blvd. which will impact Community/Traffic. Community Outreach will take place along with monitoring to determine impacts to traffic and potential for resolution.
- Utility work is 98% complete, which is a major milestone for the Project.

MANAGEMENT ISSUES

Concern No. 1: Align I-405 Closer to the Getty Parking Structure (96" MWD Waterline)

Status/Action Negotiation of the design cost is in progress with anticipated completion by end of March 2013. Construction costs have been agreed to with Kiewit and Project will send the change order to the Board in April/May 2013 for approval of the cost increase based on resolution with Kiewit.

Concern No. 2: Provisional Sums

Status/Action There will be a significant cost increase in Provisional Sums caused by unknown utility conflicts at bid time. Project is reviewing Utility scopes to verify their accuracy and identify other issues, such as future changes, that could impact the project later. In addition, the Project is actively pushing Kiewit to forward price all relocations and stop Time and Material (T&M), except in emergency type situations. Kiewit has exceeded original estimates by double in some cases which has made resolution difficult, but Project is working

MANAGEMENT ISSUES (Cont'd)

the issue with Kiewit.

Concern No. 3: Kiewit and Metro Estimating Approaches

Status/Action Metro and Kiewit have found it difficult to reconcile estimates. While Metro implemented staff changes and refocused efforts on estimates to try and resolve issues with Kiewit, the Project still continues to have problems. At the Executive Partnering Meeting, Kiewit mentioned that they would like to reconcile the estimates and finalize the associated payments. In the past several months, Kiewit has quoted the outstanding numbers to be in the range of \$45 to \$70 million. These numbers were checked against Project records and the result was not close to Kiewit's figures. It is obvious that Kiewit is asking for reimbursement of disputed items which are documented as non-payable. Project is meeting with Kiewit staff weekly to identify a complete list, prioritize, and resolve issues. As noted in Concern No. 1 above, Metro and Kiewit have met for several months attempting to reconcile the estimating process. It should be noted that Kiewit's additional supervision (not allowed by contract) quantities and inefficiencies are the cause of most of the discrepancies. Metro has decided to allow supervision on a case by case basis. Procurement and Project Director have been given this responsibility by Metro Management.

Concern No. 4 Project Cost and Schedule Reassessment

Status/Action Life of Project Budget and schedule impacts will be discussed at March/April 2013 Board meetings.

Concern No. 5: Widening of Sepulveda between Montana and Church

Status/Action This is part of the Westwood Hills lawsuit settlement and resolution of issues with the LADOT regarding the width of Sepulveda. The Project is behind in fact-finding and cost resolution.

Concern No. 6: Retaining Walls 1720 and 1730

Status/Action The changes to these walls are related to the potential Westwood Hills lawsuit settlement, LADOT requests for widening of Sepulveda, and reduced work for Kiewit at this location. Metro has been fact-finding with Kiewit for quite some time to get closer to resolving cost estimate differences. Area 5 (Getty) is taking priority so the resolution of this issue has been delayed. Metro Board approved the initial change and the Project is working under the assumption that this work is a credit to the project.

MANAGEMENT ISSUES (Cont'd)

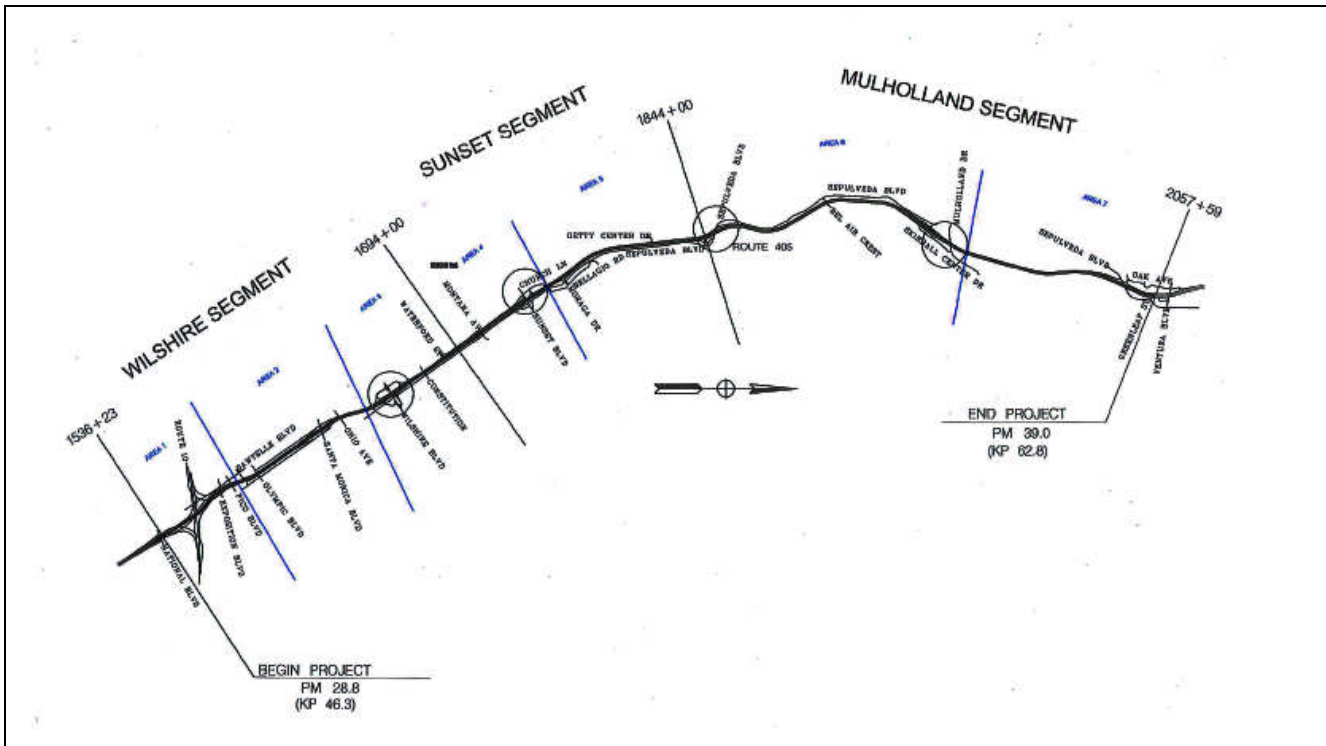
Concern No. 7: Giro Lawsuit

Status/Action Caltrans has decided that modifying the existing ramps to tie into new freeway widening, and then pursue a new ramp after I-405 Project is complete, is the preferred resolution. The project is also looking into closing the northbound Getty on-ramp, based on construction requirements, to help reduce construction impacts.

Concern No. 8: MSE Walls Failure

Status/Action Reconstruction of the Mechanically Stabilized Earth (MSE) Walls is nearly complete for the ones which were deconstructed.

PROJECT SCOPE



The I-405 Sepulveda Pass Improvements Project is a Design-Build contract to add a 10-mile High Occupancy Vehicle (HOV) lane on the northbound San Diego Freeway (I-405) between the Santa Monica (I-10) and Ventura (US 101) Freeways. The purpose of the project is to reduce congestion by adding the HOV lane and closing the HOV gap, which will provide a continuous HOV lane from the Orange County Line to the I-405/US-101 interchange. The scope entails an 11-foot half median, one 12-foot HOV lane, a 1-foot HOV buffer, five 12-foot mixed-flow lanes (six 12-foot mixed-flow lanes between Mulholland Bridge and Valley Vista), and a 10-foot outside shoulder.

Most of the freeway widening required for this project occurs along the east side of I-405 along Sepulveda Blvd. between Montana Ave. and Moraga Dr. and between Getty Center Drive and the northbound Getty Center off-ramp. Sepulveda Blvd. is going to be slightly realigned at the relocated southbound I-405 Skirball Center Drive on/off-ramps in order to add a dual-left-turn lane to the on-ramp.

Some freeway widening also occurs along the west side of the freeway between Olympic Blvd. and Waterford Street, and between Bel Air Crest to just north of Ventura Blvd. This entails NB and SB lanes and shoulder standardization.

In order to reduce accidents associated with traffic on the ramps, project scope includes several interchange improvements as detailed below:

PROJECT SCOPE





- Wilshire Blvd. interchange in both directions
The northbound on-ramp from eastbound Wilshire Blvd. is grade-separated from the northbound off-ramp to westbound Wilshire Blvd. and from Sepulveda Blvd. The southbound off-ramp to eastbound Wilshire Blvd. is grade-separated from the southbound off-ramp to westbound Wilshire Blvd.
- Northbound I-405 Sunset Blvd. interchange
The northbound I-405 off-ramp to eastbound Sunset Blvd. is widened to include one more lane. Two exclusive 12-foot lanes on the reconstructed Sunset Blvd. overcrossing and two 12-foot lanes on the on-ramp are provided for the northbound I-405 on-ramp from eastbound Sunset Blvd. In the eastbound direction three 12-foot lanes and in the westbound direction three 11-foot lanes are provided which solves the existing reduction from three lanes to two lanes in the eastbound direction. In both directions, 4-foot shoulders and 5-foot sidewalks as well as a 13-foot median are provided on the Sunset Blvd. overcrossing.
- The irregular northbound I-405 on/off-hook ramps at the Getty Center interchange are reconfigured to a standard diamond interchange to increase stopping sight distances in order to improve safety.
- The southbound I-405 Skirball Center Drive interchange is relocated to form a “T” intersection with Sepulveda Blvd. This eliminates the existing intersection at Skirball Off-Ramp and Skirball Center Drive.
- The southbound Valley Vista On and Off Ramps are realigned due to freeway widening and freeway mainline realignment between SB Valley Vista On/Off Ramps. The realignment will improve the stopping sight distance for the SB Valley Vista Off Ramp. A third lane will be added to the SB Valley Vista On-Ramp to increase the ramp capacity.
- A second NB lane will be added on Skirball Center Drive between the Skirball Bridge and NB Skirball ramps.
- A NB auxiliary lane and bike lanes will be added on Sepulveda Blvd. on each direction, between the new SB Skirball ramps and Skirball Bridge.

A total of 12 soundwalls and 54 retaining walls within the project limits are constructed at embankments where right-of-way is constrained.

A total of 12 undercrossings within the project limits are widened. Three overcrossings at Sunset Boulevard, Skirball Center Drive, and Mulholland Drive are replaced.

KEY MILESTONE SCHEDULE SIX-MONTH LOOKAHEAD

	Milestone Date	Feb-13	Mar-13	Apr-13	May-13	Jun-13	Jul-13
Bridge 19 Sepulveda UC - Complete Pouring Bent 3	2/2/13A	○					
SB I-405 On-ramp from Skirball Center Drive is opened for traffic.	2/3/13A	○					
Bridge 6B SB I405 Off-ramp to EB Wilshire - Install Steel for Top Deck & Barrier.	2/6/13A	○					
Bridge 22 Mulholland OC - Complete Pouring Bent 2 Column	2/7/13A	○					
Bridge 14 NB Off-ramp to Sunset Blvd. - Complete Pouring Bent 3 Column	2/9/13A	○					
Bridge 22 Mulholland OC - Begin Installation of Falsework	2/11/13A	○					
EB Wilshire to SB 405 On-Ramp - New ramp open for traffic.	2/21/13A	○					
Olympic NB On-ramp from Cotner Ave. - New On-ramp open for traffic.	2/22/13A	○					
SB I405 Off-ramp to WB Wilshire - Begin 14 day maximum closure window	3/8/13		○				
I-10 Interchange Area - Complete Concrete Paving on SB side.	3/11/13*		○				
Bridge 6A & 6B SB I405 Off-ramp to EB Wilshire - Complete installation of steel girder top deck & diaphragms	3/11/13*		○				
Bridge 18 - Getty Center UC - Complete bridge work.	3/18/13*		○				
Walls 1720 & 1730 - Complete shotcrete installation	3/21/13*		○				
Bridge 2 - Exposition UC - Begin Demolition of Existing Bridge Spans 4 - Abutment 9.	3/24/13*		○				
Bridge 21 - Skirball OC - Begin Installation of Precast Concrete Girders-South Side.	4/2/13*			○			
Bridge 22 - Mulholland OC. Begin forming bottom deck.	4/2/13*			○			
Bridge 2 - Exposition UC - Complete Demolition of Existing Bridge Spans 4 - Abutment 9.	4/3/13*			○			
Bridge 7 - NB405 to EB Wilshire Off-ramp - Complete Installation of CIP Box Girder (Stem Spans 4-3) - PH 2	4/10/13*			○			

 Metro Milestone
  Design/Build
  Third Parties Approval
 Caltrans Milestone
 * New Date
  FHWA Federal Highway Administration Approval

KEY MILESTONE SCHEDULE SIX-MONTH LOOKAHEAD

	Milestone Date	Feb-13	Mar-13	Apr-13	May-13	Jun-13	Jul-13
Bridge 21 - Skirball OC - Complete Installation of Precast Concrete Girders-South Side.	4/17/13*			○			
Bridge 6 - SB Wilshire Off-ramp - Complete Bridge Work-6A & 6B	4/22/13*			○			
Bridge 23 - Sepulveda - Begin Installation of CIP T-Girders - PH 1	4/22/13*			○			
Bridge 2 - Exposition UC - Begin Installation of CIP Box Girder Stems, Stage 2 (Span 4-8)	5/8/13*				○		
I-10 Interchange Area - Complete Concrete Paving on NB side.	5/22/13*				○		
Bridge 8 - NB Wilshire On-ramp - Complete Installation of CIP Box Girder Top Deck - (abut #9, bent 6-8) - PH 3	5/22/13*				○		
Bridge 2 - Exposition UC - Complete Installation of CIP Box Girder Deck, Stage 2 (Span 4-8)	5/23/13*				○		
Bridge 7 - NB Wilshire Off-ramp CIP Box Girder (Top Deck Spans 4-3) - PH 2 Complete Installation	5/31/13*				○		
Bridge 22 - Mulholland OC -Complete Pouring Top Deck	6/14/13*					○	
NB 405 in Wilshire Blvd. Area - Complete Concrete Paving.	6/17/13*					○	
Bridge 7 - NB Wilshire Off-ramp CIP Box Girder (Top Deck Spans 2-1) - PH 1 Complete Installation	6/19/13*					○	
I-10 Interchange Area NB - Complete Landscaping & Irrigation installation	6/21/13*					○	
Bridge 23 Sepulveda - Complete Installation of Structural Steel Girders	6/21/13					○	
SB 405 in Wilshire Blvd. Area - Complete Concrete Paving.	6/25/13*					○	
SB 405 in Santa Monica Blvd. Area - Complete Concrete Paving.	7/8/13						○
Bridge 17 Church Lane UC - Begin Installation of Falsework for Top Deck.	7/8/13						○
Bridge 14 Sunset Offramp - Complete Steel Girder Top Deck & Diaphragms/Bridge Bearings	7/10/13						○
Bridge 23 Sepulveda UC - Begin Steel Girder Top Deck & Diaphragms Installation Phase 1	7/10/13						○



Metro Milestone



Design/Build



Third Parties Approval



Caltrans Milestone



New Date

FHWA

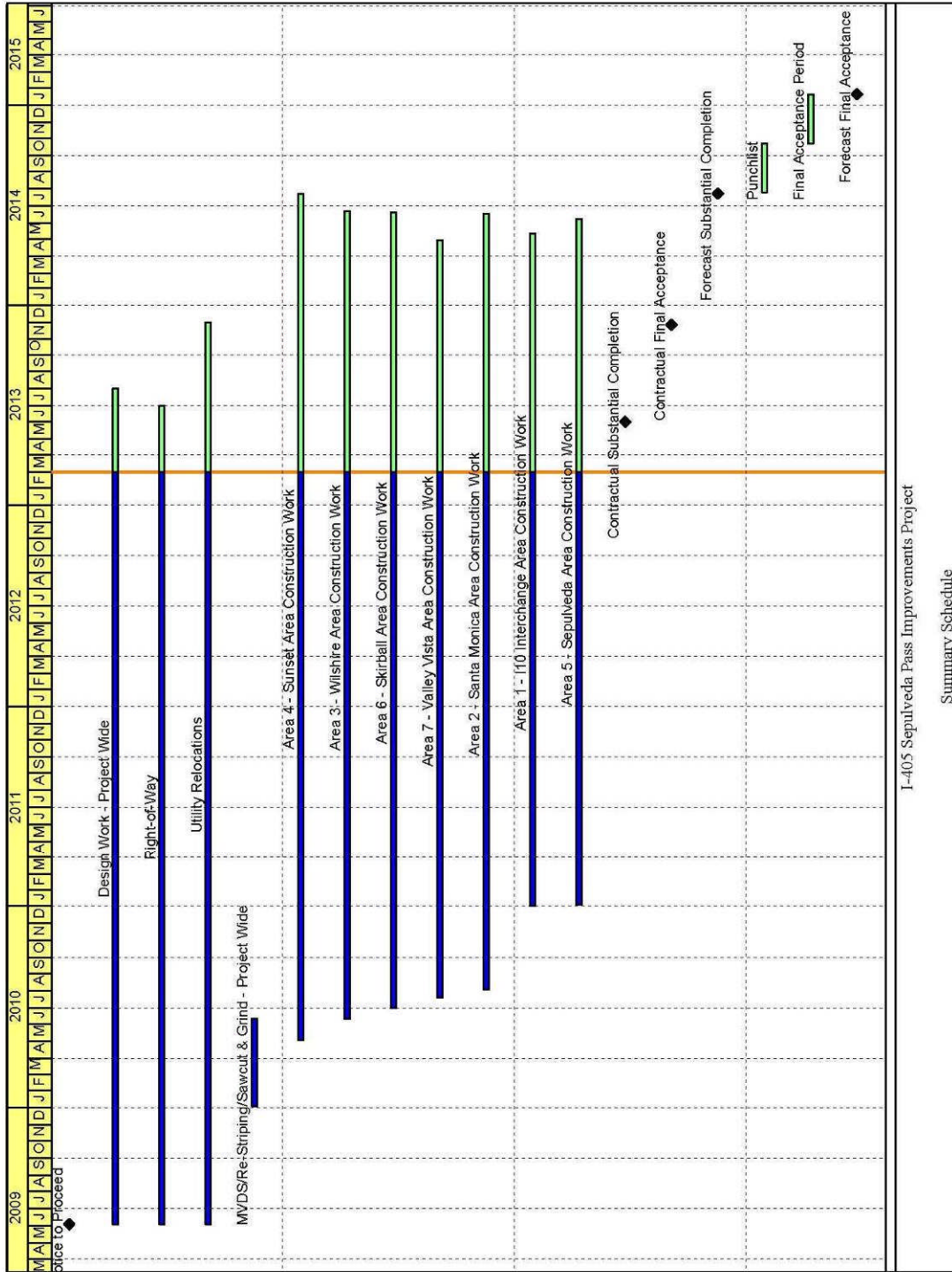
FHWA Federal Highway Administration Approval

KEY MILESTONE SCHEDULE SIX-MONTH LOOKAHEAD

	Milestone Date	Feb-13	Mar-13	Apr-13	May-13	Jun-13	Jul-13
Bridge 2 Exposition UC - Complete Bridge Work.	7/25/13						○
Bridge 19 Sepulveda UC - Complete Setting Precast Concrete Girders.	7/31/13						○

M Metro Milestone	○ Design/Build	△ Third Parties Approval
CT Caltrans Milestone	* New Date	FHWA FHWA Federal Highway Administration Approval

PROJECT SUMMARY SCHEDULE



I-405 Sepulveda Pass Improvements Project

Summary Schedule

CRITICAL PATH NARRATIVE

The project has several critical paths which may potentially change as the work progresses. Based on the current project update, the primary critical path runs through the relocation of Verizon and LADWP Utility 248 and continues through MSE Wall 1766, Moraga On-Ramp, and MSE Wall 1764. The path then continues with construction of MSE Wall 1760 and Sunset Area NB widening. The path ends with Area 4 median work.

PROJECT COST STATUS

I-405 SEPULVEDA PASS IMPROVEMENTS PROJECT
 FEDERAL PROJECT #: SARRA-405-3(015)N, METRO PRIME CONTRACT# C0882
 METRO CONSTRUCTION MANAGEMENT DIVISION / CALTRANS
 COMBINED COST REPORT BY PHASE
 PERIOD ENDING: FEBRUARY 2013
 DOLLARS IN THOUSANDS

PHASE #	PHASE CODE	DESCRIPTION	ORIGINAL BUDGET	CURRENT BUDGET		COMMITMENTS		EXPENDITURES		CURRENT FORECAST		BUDGET / FORECAST VARIANCE
				PERIOD	TO DATE	PERIOD	TO DATE	PERIOD	TO DATE	PERIOD	TO DATE	
0	PA&ED	PROJECT APPROVAL & ENVIRO DOCS	22,000	-	21,457	-	21,078	-	21,078	-	21,457	-
1	PSE	PLANS, SPECS, & ENGINEERING	63,100	-	25,560	-	25,613	-	25,677	-	25,632	72
2	RS	RIGHT-OF-WAY SUPPORT	14,000	-	9,543	77	6,412	77	6,412	-	8,076	(1,467)
3	CS	CONSTRUCTION SUPPORT	28,000	-	67,813	513	75,065	844	61,638	-	75,355	7,542
4	C	CONSTRUCTION	823,900	-	810,441	2,426	803,765	405	530,816	-	842,688	32,247
9	RC	RIGHT-OF-WAY CAPITAL	83,000	-	99,186	837	53,439	2,988	42,249	-	60,792	(38,394)
SUBTOTAL PROJECT			1,034,000	-	1,034,000	3,853	985,371	4,313	687,870	-	1,034,000	-
4	C	CONSTRUCTION OF CITY OF L.A.'S REVERSIBLE LANES PROJECT	-	-	6,000	-	-	-	-	-	6,000	-
4	C	CONSTRUCTION OF CALTRANS DRAINAGE SYSTEM REPAIRS	-	-	8,000	-	-	-	-	-	8,000	-
TOTAL PROJECT			1,034,000	-	1,048,000	3,853	985,371	4,313	687,870	-	1,048,000	-

NOTE: EXPENDITURES ARE CUMULATIVE THROUGH JANUARY 31, 2013.
 KIEWIT EXPENDITURES ARE ONLY THROUGH OCTOBER 31, 2012 DUE TO INVOICING LAG.

PROJECT COST ANALYSIS

Original and Current Budgets

The Original Budget reflects the Metro Board adopted Life-of-Project (LOP) Budget which was approved in April 2009 in the amount of \$1,034.0 million. An additional \$6.0 million was approved by the Metro Board to add the City of LA's Reversible Lanes Project Scope funded by the City of Los Angeles, along with another \$8.0 million approved by the Metro Board to add Caltrans drainage system repairs to be funded by Caltrans. This brings the Total Current Budget to \$1,048 million.

Current Budget and Current Forecast

The Current Budget is \$1,048.0 million. Trends 1 through 147 have been approved and are included in the Current Forecast of \$1,048.0. Project Budget Change Requests 1 through 5 (PBCR) have been approved and included in the Current Budget.

Commitments

The Commitments increased by \$3.9 million this period primarily for purchase orders associated with Caltrans real estate acquisitions, consulting services, Kiewit change orders, and Metro/Caltrans staff charges.

PROJECT COST ANALYSIS (Contd)

Expenditures

Expenditures are cumulative through January 2013. The expenditures increased by a total of \$4.3M this period. Expenditures within the construction support phase included Metro and Caltrans project staff and miscellaneous consultant contract services. Costs in the right-of-way categories were for 3rd party Metro staff costs and for third party and utility relocation expenditures. Caltrans right-of-way expenditures for the period included staff charges for right-of-way support and real estate acquisitions. A partial invoice for Kiewit in the amount of \$405K for the period ending October 31, 2012 was processed by Metro Accounting this period. The \$687.9 million in Project Expenditures to date represents 65.6% of the Current Budget.

FINANCIAL/GRANT STATUS – ORIGINAL SCOPE ACTIVITIES

FEBRUARY 2013

STATUS OF FUNDS BY SOURCE

SOURCE	(A)	(B)	(C)	(D)	(D/B)	(E)	(E/B)	(F)	(F/B)
	APPROVED BUDGET	TOTAL FUNDS ANTICIPATED	TOTAL FUNDS AVAILABLE	\$	%	\$	%	BILLED TO FUNDING SOURCE * \$	%
FEDERAL SAFETEA-LU	\$117.000	\$117.000	\$117.000	\$117.000	100%	\$50.823	43%	\$50.823	43%
FEDERAL ARRA	\$189.900	\$189.900	\$189.900	\$189.900	100%	\$189.900	100%	\$189.900	100%
STATE CMIA	\$614.000	\$614.000	\$614.000	\$576.246	94%	\$401.133	65%	\$332.652	54%
STATE TCRP	\$90.000	\$90.000	\$90.000	\$90.000	100%	\$33.789	38%	\$33.789	38%
STATE RSTP	\$10.100	\$10.100	\$10.100	\$10.100	100%	\$10.100	100%	\$10.100	100%
PROPOSITION C 25%	\$13.000	\$13.000	\$13.000	\$2.125	16%	\$2.125	16%	\$2.125	16%
SUB TOTAL FUNDS	\$1,034.000	\$1,034.000	\$1,034.000	\$985.371	95%	\$687.870	67%	\$619.389	60%
CITY OF LA **	\$6.000	\$6.000	\$0.000	\$0.000		\$0.000		\$0.000	
CALTRANS	\$8.000	\$8.000	\$8.000						
TOTAL FUNDS	\$1,048.000	\$1,048.000	\$1,042.000	\$985.371		\$687.870		\$619.389	

NOTE: EXPENDITURES ARE CUMULATIVE THROUGH JANUARY 2013.
 * BILLING AMOUNT IS LESS THAN EXPENDITURES AMOUNT DUE TO SYSTEM LAG IN SUBMITTING INVOICES TO CALTRANS.
 ** CONSTRUCTION OF CITY OF LA REVERSIBLE LANES PROJECT.
 *** CONSTRUCTION OF CALTRANS DRAINAGE SYSTEM REPAIRS.

STATUS OF FUNDS ANTICIPATED

FEDERAL SAFETEA-LU: \$117M is available for drawdown for specific phases of the Project as agreed upon in the Cooperative Agreement between Caltrans and Metro.

FEDERAL ARRA: \$189.9M is available for drawdown for specific phases of the Project as agreed upon in the Cooperative Agreement between Caltrans and Metro with consultation with FHWA.

STATE CMIA: State Proposition 1B Bond sales provided \$254.7M to the project. Funds are available for drawdown. The remaining balance of \$359.3M has been allocated and are available for drawdown.

STATE TCRP: \$42M is available for drawdown for specific phases of the Project as agreed upon in the Cooperative Agreement between Caltrans and Metro. The remaining balance of \$48M has been made available by the CTC and is available for drawdown.

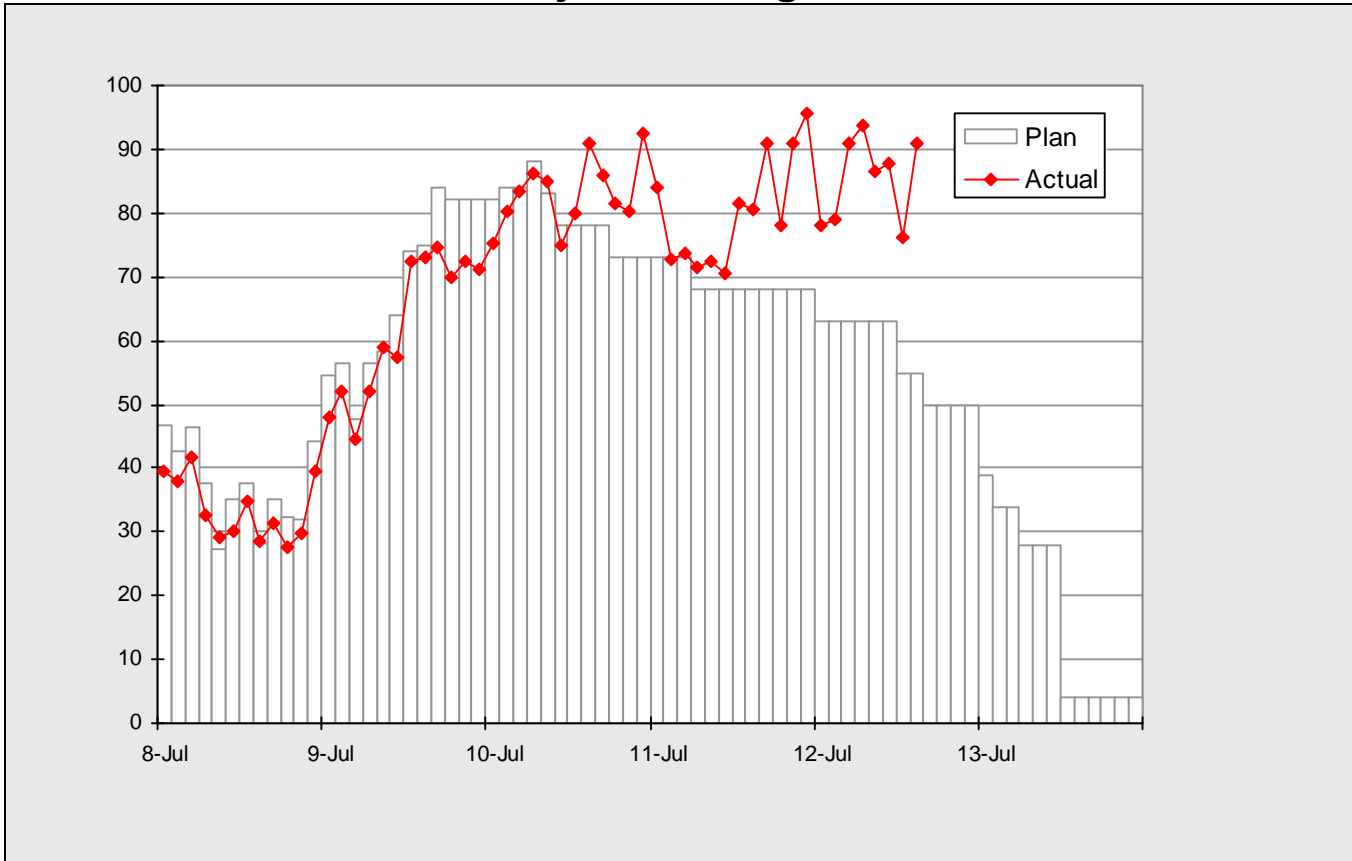
STATE RSTP: \$10.1M is available for drawdown for specific phases of the Project as agreed upon in the Cooperative Agreement between Caltrans and Metro.

PROPOSITION C 25%: The Metro Board approved the allocation of \$13M to the Project.

CALTRANS: Metro Board authorized staff in July 2012 to execute a Memorandum of Understanding between Caltrans Maintenance and Metro for a total amount of \$8M for the cleaning and the reconstruction of Caltrans drainage. Funds are available for drawdown.

STAFFING STATUS

Total Project Staffing - FTEs

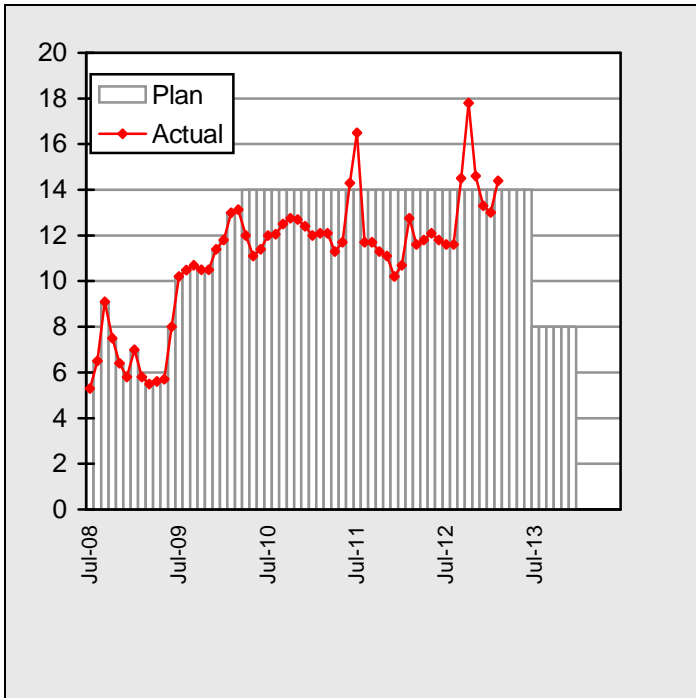


Total Project Staffing

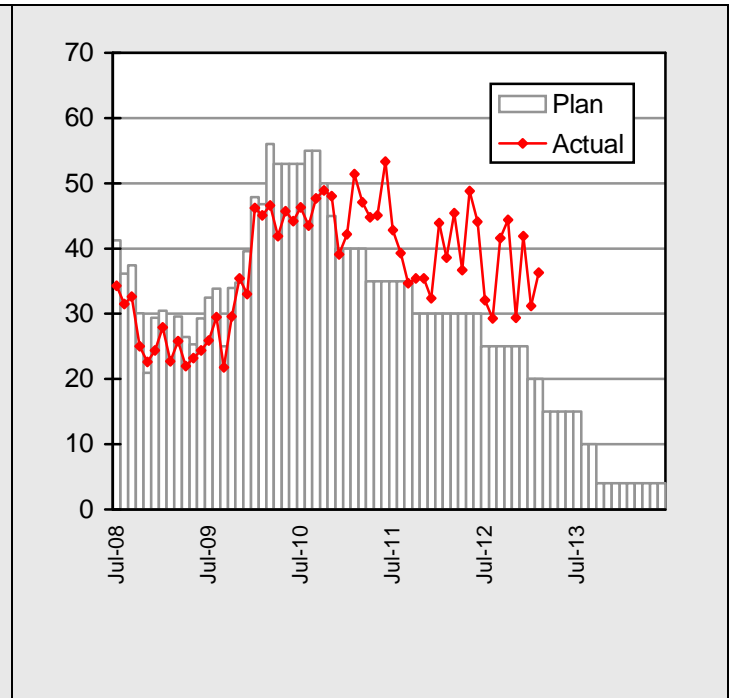
Project Staffing Plan is presently being reassessed as a component of the Cost Schedule Reassessment.

STAFFING STATUS

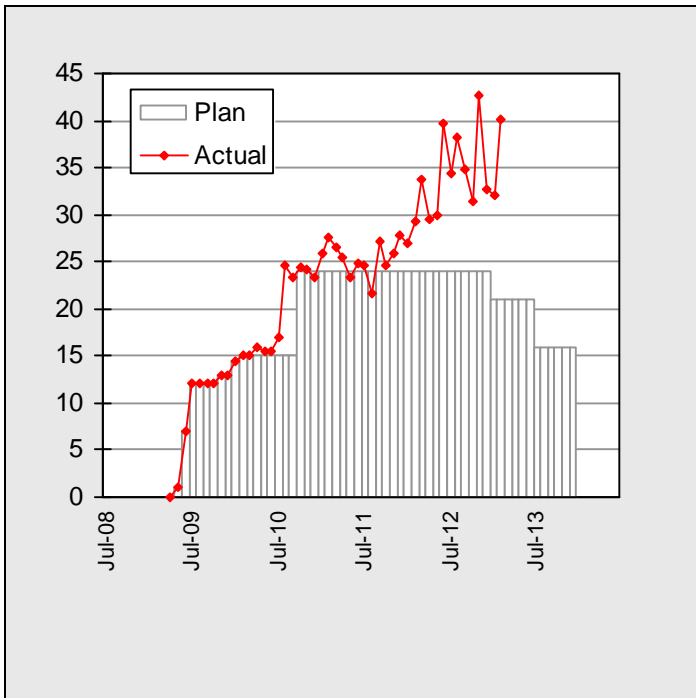
MTA - FTEs



CALTRANS- FTEs



STANTEC - FTEs



REAL ESTATE STATUS

The Real Estate acquisition process is proceeding and the Project is working on obtaining and releasing the past due parcels to the Contractor.

- Parcel 79612 (MWD) – Right-of-Entry (ROE) in place until July 31, 2013. Additional Right-of-Way (ROW) required which has not yet been fully identified and may impact the project schedule.
- ROW Tie-back easements at 1791/1797 – ROW maps for the Getty owned parcels are being reviewed prior to requesting an ROE.
- ROW transformer pad at 1837 – LACMTA obtained access - closed.
- Parcel 80373 - DWP work at 11390 Thurston –Undergrounding of utilities is required. Temporary Construction Easement (TCE) has been requested for the work to proceed – Caltrans in process of approving RE-49.
- Parcel 79619 (LACMTA) – Access has been provided but parcel has not been acquired yet. Acquisition will take place after the completion of project. This parcel has no apparent schedule impact.
- Parcel 79692 (Skirball) – ROE has been provided for the additional ROW but the parcel has not been acquired yet. This parcel has no apparent schedule impact.
- TCE for the 22 parcels in the Westwood Hills Area have been extended until December 31, 2012 to facilitate completion of the work. Work was not completed by December 31, 2012. TCEs have been extended to June 30, 2014.
- Parcel 80376/80378 (Formally Parcels 79630/79629) - Additional ROW requirements are needed for grading and drainage. ROE from Sanitation has been obtained and Caltrans is currently working with County for the ROE. ROEs for Clear and Grub have been obtained.

ENVIRONMENTAL STATUS

- Ongoing coordination with Santa Monica Mountains Conservancy (SMMC) and National Park Service on wildlife crossings and the redesign of NB Getty on-ramp and the associated wildlife culvert. The project provided direction to the Contractor to keep the on/off ramps in their existing location. Further coordination will be required with SMMC and NPS regarding this project change.
- Ongoing preparation of an Environmental Addendum for changes associated with the final design of the N/B Getty on-ramp. A separate new project has been programmed to modify existing ramps and is currently in the Project Initiation Document Phase.
- Ongoing coordination regarding landscaping along Sepulveda Blvd. between Constitution and Sunset and required mitigation associated with tree removal from City and State R/W. Caltrans, Metro and LABSS continue to discuss outstanding tree removal permits and tree replacement plans.
- Retaining Wall 1921 – Received Tree Removal Permit from the City of Los Angeles on 2/6/13. A Focused Plant Survey was completed on 2/6/13. Right-of-Entry for clear and grub received from the County of Los Angeles on 2/7/13.
- Regional Water Quality Control Board inspected the project on 2/19/13 and requested the project immediately address erosion control prior to the forecasted rain event.

COMMUNITY RELATIONS STATUS

- Distributed construction notices for the following construction activities: 55-hour lane reduction on northbound I-405 to facilitate paving and re-striping of the mainline, upcoming 14-day ramp closure of southbound 405 to westbound Wilshire Blvd. to facilitate demolition of existing ramp, paving, striping and k-rail shifts for new ramp, Olympic Blvd. on-ramp to northbound 405, daytime reduction and nighttime extended closure to facilitate work on Pico Blvd. Bridge undercrossing, continued pile driving for Sunset Blvd. off-ramp bridge and protection of 20x20 drainage box, extensive backfill work for retaining wall 1718, finalizing work on Sepulveda Way to re-open in March, Sherman Oaks drainage work, New Skirball on-ramp opening, Sepulveda traffic reconfiguration, full freeway closure, Valley Vista construction update, Bel Air Crest Bridge construction, Sepulveda Overpass Construction, full Sepulveda closures, Mulholland Bridge closure and northbound Skirball ramps closure.
- Participated in the following meetings: Elected Officials Briefing, Mulholland Educational Corridor Association Meeting, Council District 4 Project Briefing, Valley Vista Landscape Meeting, Mission Canyon Meeting, maintenance of traffic meeting, Wall 1921 permit, soil meetings, Wall 1720/30 artwork, Council Member LaBonge Brief and Bel Air Homeowners Association.
- Coordinated the following work activities: closures on Cotner Ave. to conduct traffic signal conduit work and restriping of street, pile driving on General Services Administration parking lot for eastbound Wilshire to northbound 405 on-ramp bridge construction, additional signage for Los Angeles Marathon and provide alternate routes to access Veteran Affairs, concerns due to nighttime noise and vibration from Bronwood Glen, request to repave Church Lane due to potholes, community landscaping concerns, construction noise impacts, vehicle damage claims, cementing of open utility trench, traffic impacts for new southbound Skirball ramps and traffic signal problems.
- 4,803 followers on Twitter.
- 18,677 likes on Facebook.
- 86,009 page views on Website.

QUALITY ASSURANCE STATUS

- Metro Quality participated in:
 - Four Pre-Activity Meetings.
 - Joint Project Quality Meeting
- Seventeen Nonconformance Reports (NCRs) were issued this month.
- Fifteen Deficiency Reports (DRs) were issued this month.

SAFETY AND SECURITY STATUS

- There were three recordable injuries on the Project during the month of February 2013, one of which resulted in one day away from work for the employee.
- Safety Staff participated in pre-activity (readiness review) meetings to ensure compliance with approved Work Plans and contract specifications.
- Construction activities are monitored during day and night shifts to ensure contractor compliance with contract specifications.
- Safety staff attended weekly Progress Meeting, Foreman's Weekly Safety Meetings and other project meetings to evaluate Contractors Safety Program compliance with contract requirements.
- February Contractor Work Hours (Design & Construction): 196,938
- Contractor – Project to Date Work Hours (Design & Construction): 5,308,628
- Total Project to Date Work Hours (Contractor & the IPO Staff): 5,850,641
- Project to Date Recordable Injury Rate: 0.7 (Twenty-one Recordable Injuries) (each rate is per 200,00 work hours)
- Project to Date Total Time Away Injury Rate: 0.3 (Ten Time Away From Work Injuries)
- Project to Date Total Days Away Rate: 17.1 (499 Days Away From Work)
- Metro Construction Safety is once again providing Contract Compliance oversight during both day and night shifts.

THIRD PARTY AGREEMENT STATUS

Third Party	Type of Agreement	Forecast Execution Date	Required Need Date	Status/ Comments
City of Los Angeles	MCA	6/13	6/09	A stand-alone Master Cooperative Agreement (MCA) between the City of Los Angeles and LACMTA is currently being drafted for the I-405 Project.
Los Angeles County Department of Public Works/Los Angeles Flood Control District	MCA	Cancelled	Cancelled	On advice of County Counsel, LACMTA is not required to enter into a Master Cooperative Agreement with the Los Angeles County Department of Public Works/Los Angeles Flood Control District since the I-405 Project is a State Project, not a LACMTA Project.
Utility Owners	Utility Agreements	Various	Various	Caltrans style Utility Agreements (similar to MTA Work Order Authorizations) will be completed as relocation plans are approved for each location.

CONTRACT STATUS

<p>I-405 Sepulveda Pass Improvements Project Design/Build Contractor: Kiewit</p>	<p>Contract No.: C0882</p> <p>Status as of: March 1, 2013</p>																																				
<p>Progress/Work Completed: Major work started/completed this period:</p> <ul style="list-style-type: none"> • Bridge 19 Sepulveda UC Bent 3 column is poured. • SB 405 On-ramp from Skirball Center is opened. • Bridge 6B Wilshire Off-ramp steel top deck installed. • Bridge 22 Mulholland Bent 2 column is poured. • Bridge 22 Mulholland Falsework installation is started. • SB On-ramp from EB Wilshire is opened. • NB 405 On-ramp from Cotner at Olympic is opened. • Maintenance during construction - SWPPP cleanout and repairs, graffiti removal from k-rails, trash and debris removal. <p>Areas of Concern:</p> <ul style="list-style-type: none"> • Giro Property issue. • Wall 1921 construction. • Area 4 utilities. • Global Maintenance of Traffic (MOT). 	<p>Major Activities (In Progress):</p> <ul style="list-style-type: none"> • Grading and paving. • Construction of Retaining Walls and sound walls. • Utility Relocations. • Bridge 1 and 2 construction. • Bridge 3 construction. • Bridge 4a/4b construction. • Bridge 5a/5b construction. • Bridge 7 and Bridge 8 construction. • Bridge 9 construction. • Bridge 12 and Bridge 13 construction. • Bridge 14 and Bridge 15 construction. • Bridge 16 and Bridge 17 construction. • Bridge 18 and Bridge 19 construction. • Bridge 20 and Bridge 21 construction. • Bridge 22 and Bridge 23 construction. • Maintenance during construction. <p>Major Activities Next Period:</p> <ul style="list-style-type: none"> • Retaining Walls 1720 and 1730 - Begin shotcrete installation. • Bridge 6A SB Wilshire Off-ramp - Complete steel girder top deck and diaphragms construction. • SB 405 to WB Wilshire Off-ramp 14 day closure window is started. • Complete concrete roadway paving on SB 405 at the I-10 Interchange. • Bridge 2 begin demolition of existing Bridge Spans. 																																				
	<table border="1" style="width: 100%; border-collapse: collapse; margin: 0 auto;"> <thead> <tr> <th style="width: 20%;"></th> <th style="width: 10%;">Original Baseline</th> <th style="width: 10%;">Time Extension</th> <th style="width: 10%;">Current Contract</th> <th style="width: 10%;">Forecast Completion</th> <th style="width: 10%;">Variance Cur-Fcast</th> </tr> </thead> <tbody> <tr> <td>Commencement</td> <td>08/31/09</td> <td style="text-align: center;">0</td> <td>08/31/09</td> <td>08/31/09</td> <td style="text-align: center;">0</td> </tr> <tr> <td>Completion</td> <td>05/31/13</td> <td style="text-align: center;">0</td> <td>05/31/13</td> <td>07/23/14</td> <td style="text-align: center;">-418</td> </tr> <tr> <td>Punchlist Complete</td> <td>08/29/13</td> <td style="text-align: center;">0</td> <td>08/29/13</td> <td>10/21/14</td> <td style="text-align: center;">-418</td> </tr> <tr> <td>Final Acceptance</td> <td>11/27/13</td> <td style="text-align: center;">0</td> <td>11/27/13</td> <td>01/19/15</td> <td style="text-align: center;">-418</td> </tr> <tr> <td> </td> <td> </td> <td> </td> <td> </td> <td> </td> <td> </td> </tr> </tbody> </table>		Original Baseline	Time Extension	Current Contract	Forecast Completion	Variance Cur-Fcast	Commencement	08/31/09	0	08/31/09	08/31/09	0	Completion	05/31/13	0	05/31/13	07/23/14	-418	Punchlist Complete	08/29/13	0	08/29/13	10/21/14	-418	Final Acceptance	11/27/13	0	11/27/13	01/19/15	-418						
	Original Baseline	Time Extension	Current Contract	Forecast Completion	Variance Cur-Fcast																																
Commencement	08/31/09	0	08/31/09	08/31/09	0																																
Completion	05/31/13	0	05/31/13	07/23/14	-418																																
Punchlist Complete	08/29/13	0	08/29/13	10/21/14	-418																																
Final Acceptance	11/27/13	0	11/27/13	01/19/15	-418																																
<p>Schedule Summary:</p> <table style="width: 100%; border-collapse: collapse;"> <tr> <td style="border-bottom: 1px solid black;">Notice of Award</td> <td style="text-align: right;">04/29/09</td> </tr> <tr> <td>Notice to Proceed</td> <td style="text-align: right;">06/02/09</td> </tr> <tr> <td>Original Contract Duration (CD)</td> <td style="text-align: right;">1640</td> </tr> <tr> <td>Approved Time Extensions (CD)</td> <td style="text-align: right;">0</td> </tr> <tr> <td>Current Contract Duration (CD)</td> <td style="text-align: right;">1640</td> </tr> <tr> <td>Elapsed Time from NTP (CD)</td> <td style="text-align: right;">1,369</td> </tr> <tr> <td>Contract Elapsed Time Percent</td> <td style="text-align: right;">83.5%</td> </tr> </table>	Notice of Award	04/29/09	Notice to Proceed	06/02/09	Original Contract Duration (CD)	1640	Approved Time Extensions (CD)	0	Current Contract Duration (CD)	1640	Elapsed Time from NTP (CD)	1,369	Contract Elapsed Time Percent	83.5%	<p>Cost Summary: \$ In 000's</p> <table style="width: 100%; border-collapse: collapse;"> <tr> <td>1. Award Value:</td> <td style="text-align: right;">720,922</td> </tr> <tr> <td>2. Executed Modifications:</td> <td style="text-align: right;">67,047</td> </tr> <tr> <td>3. Approved Change Orders:</td> <td style="text-align: right;">21,133</td> </tr> <tr> <td>4. Current Contract Value (1 + 2 + 3):</td> <td style="text-align: right;">809,102</td> </tr> <tr> <td>5. Incurred Cost:</td> <td style="text-align: right;">560,343</td> </tr> <tr> <td>6. Percent Incurred Cost:</td> <td style="text-align: right;">69.3%</td> </tr> </table>	1. Award Value:	720,922	2. Executed Modifications:	67,047	3. Approved Change Orders:	21,133	4. Current Contract Value (1 + 2 + 3):	809,102	5. Incurred Cost:	560,343	6. Percent Incurred Cost:	69.3%										
Notice of Award	04/29/09																																				
Notice to Proceed	06/02/09																																				
Original Contract Duration (CD)	1640																																				
Approved Time Extensions (CD)	0																																				
Current Contract Duration (CD)	1640																																				
Elapsed Time from NTP (CD)	1,369																																				
Contract Elapsed Time Percent	83.5%																																				
1. Award Value:	720,922																																				
2. Executed Modifications:	67,047																																				
3. Approved Change Orders:	21,133																																				
4. Current Contract Value (1 + 2 + 3):	809,102																																				
5. Incurred Cost:	560,343																																				
6. Percent Incurred Cost:	69.3%																																				

CHRONOLOGY OF EVENTS

May 18, 2007	The Draft Environmental Impact Report (EIR)/Environmental Impact Statement (EIS) is issued.
May 22, 2007 to October 1, 2007	Public review of draft EIS.
February 29, 2008	The Final Environmental Impact Report (EIR)/Environmental Impact Statement (EIS) is issued.
March 10, 2008	The Final Environmental Impact Report (EIR)/Environmental Impact Statement (EIS) errata with U. S. General Services Administration (GSA) comments is issued.
March 14, 2008 to April 14, 2008	Public review of Final EIS.
April 25, 2008	Record of Decision (ROD) approved.
October 10, 2008	LACMTA issued Invitation For Bid (IFB) for the project.
February 20, 2009	Project bids opened.
April 23, 2009	LACMTA Board authorized the Chief Executive Officer to award Design-Build Contract C0882 to Kiewit Pacific Co.
April 23, 2009	LACMTA Board approved establishing a budget of \$1.034 billion for project 405523.
April 23, 2009	LACMTA awarded Contract C0882 to Kiewit Pacific in the amount \$694,156,000 to include Schedules A, C, and H (Option 4).
April 29, 2009	LACMTA issued a revised NOA to Kiewit Pacific in the amount \$720,922,000 to include Schedules A, C, E (Option 1), F (Option 2), G (Option 3), and H (Option 4).
June 2, 2009	LACMTA issued Notice to Proceed to Kiewit Pacific for the Design-Build Contract C0882.
August 31, 2009	Contract Commencement Date.
September 24, 2009	Kiewit Pacific submitted the Project Baseline Schedule.
October 14, 2009	Project Design Quality Management Plan approved.

CHRONOLOGY OF EVENTS (Cont'd)

December 14, 2009	Project Quality Management System approved.
January 20, 2010	Project Baseline Schedule was approved.
January 27, 2010	Roadway Restriping commenced.
March 12, 2010	Major Project Permits were obtained; Permit 401 – Water Quality Control Board, Permit 404 – U.S. Army Corps of Engineers, and Permit 1600 – California Department of Fish & Game.
May 31, 2010	The Project completed one year without a Recordable Injury.
July 23, 2010	Sunset Bridge major demolition of the south side top deck and center column.
August 2, 2010	Commenced construction on Bridge 4a/b.
August 16, 2010	Commenced ExxonMobil 16" utility relocation at Bridge 16.
August 20, 2010	Operating Engineers Local 12 initiate labor action by striking.
August 24, 2010	Completed ductbank work on Sepulveda for DWP utility undergrounding.
August 24, 2010	Commenced construction of Walls 1720/1730.
August 24, 2010	ITS Backbone is cut.
September 7, 2010	DWP started pulling wires for utility undergrounding on Sepulveda.
September 9, 2010	Operating Engineers Local 12 Labor action is settled and strike ends.
September 13, 2010	Completed the excavation of Roadway at 1685/1691.
September 15, 2010	Completed the removal of Wall 1665.
September 18, 2010	Completed installation of Temporary walkway at Skirball Bridge.
September 28, 2010	Pioneer access to Sunset on-ramp, Bridge 15 Abutment 1.

CHRONOLOGY OF EVENTS (Cont'd)

October 12, 2010	Began excavation of Sunset Bridge 16 Abutment 1 Footing.
October 12, 2010	Began demolition of Skirball Bridge 21.
October 15, 2010	Completed demolition Skirball Bridge 21.
October 15, 2010	Began driving piles at Santa Monica Bridge 4.
October 15, 2010	Installed Beams at Sunset Bridge 16, Bent #2.
October 15, 2010	Began driving piles on Santa Monica Bridge 4.
October 19, 2010	Completed demolition of Sunset Bridge 16, Abutment 4.
October 21, 2010	Installed beams at Sunset Bridge 15 On Ramp, Abutment 1.
October 22, 2010	Began Demolition of Sunset Bridge 16, Abutment 1.
October 22, 2010	Installed Piles at Wall 1720.
October 25, 2010	Began Excavation at Walls 1685/1691.
October 28, 2010	Began the relocation of overhead power lines at Ohio Ave Bridge 5.
October 28, 2010	Clear and grub area at Wall 1746.
November 12, 2010	Completed demolition of soundwall, barrier rail, and overhang at Bridge 13.
November 15, 2010	Completed installation of SOE at Abutment 1 NB at Bridge 4 Santa Monica.
November 15, 2010	Completed demolition of existing ExxonMobil 16" Oil Pipeline.
November 17, 2010	Completed excavation of CIP at Wall 1640.
November 18, 2010	Began excavation at Wall 1635.
November 29, 2010	Began Excavation at Bridge 13.
November 30, 2010	Began relocation of SCE underground vault.

CHRONOLOGY OF EVENTS (Cont'd)

December 7, 2010	Began driving piles at Bridge 13 - Montana Avenue UC.
December 14, 2010	Completed Pile driving at Abutment 1 Bridge 16 Sunset OC.
December 15, 2010	Completed the installation of new power poles and raised the utility wires at Bridge 5 - Ohio Avenue.
December 16, 2010	Completed piles at abutments 1 and 2 for Bridge 13 Montana Ave UC.
December 17, 2010	Began installation of SOE beams at Bridge 15 Sunset on-ramp.
January 3, 2011	Began Construction of Piers and Columns at Bridge 16.
January 11, 2011	Began Construction Activities at Bridge 5.
January 13, 2011	Began Construction Activities at Bridge 12.
January 17, 2011	Began Installation of Footings and Pile Caps at Bridge 16.
February 1, 2011	Began Construction Activities at Bridge 21 – Skirball Center Drive.
February 14, 2011	Began Field Work relocating Storm Drain at Veterans Administration (VA).
February 21, 2011	Began Field Work relocating Chevron Oil Pipeline at Bridge 23 – Sepulveda UC.
February 23, 2011	Began Construction Activities at Bridge 15 – Sunset On-Ramp.
February 25, 2011	Completed Drilling and Placing Beams at NB Abutments 1 & 2 at Bridge 12 – Constitution UC.
February 28, 2011	Completed Pouring Columns at Bent 3, Bridge 16 – Sunset OC.
March 2, 2011	Began Field Work relocating LADWP 4" Waterline at Valley Vista.
March 2, 2011	Completed Driving 14" Square Piles at Bridge 3 Abutment 1.
March 15, 2011	Began Field Work relocating So Cal Gas Line at Wall 1746.

CHRONOLOGY OF EVENTS (Cont'd)

March 18, 2011	Completed Setting Soldier Beams at Bridge 15 Bent 2 & 3 Mainline.
March 23, 2011	Began Field Work Encasing Sewer Lines 401-403 at Walls 1720, 1730 and 1746.
March 31, 2011	Completed Setting and Backfilling Wall Panels at Wall 1942B.
April 4, 2011	Began Installation of Bent 2 & Bent 3 Columns at Bridge 21 Skirball Center Drive OC.
April 5, 2011	Began Installation of Storm Drain at Walls 1720 and 1730.
April 10, 2011	Completed Installation of Girders at Bridge 13 Montana Ave UC.
April 22, 2011	Completed Bridge 9 Wilshire Blvd. UC demolition for widening.
April 25, 2011	Began Work Relocating Shell Oil Line at Bridge 23 Sepulveda UC.
May 2, 2011	Began Relocation of Area 2 Sewer Lines # 201-203.
May 6, 2011	Completed Setting Girders at Southside of Bridge 16 Sunset OC.
May 11, 2011	Began Construction Work on Bridge 3 Olympic Blvd.
May 25, 2011	Completed Tie Back Installation at Walls 1720 and 1730.
June 3, 2011	Completed Girder Installation on the North Side of Bridge 21 Skirball OC.
June 13, 2011	Began Installation of Precast Deck Panels on Bridge 16 Sunset OC.
June 24, 2011	Began Demolition of Existing Walls 1720 and 1730 along Sepulveda Blvd.
June 30, 2011	Completed Installation of Precast Deck Panels on Bridge 16 Sunset OC.

CHRONOLOGY OF EVENTS (Cont'd)

July 6, 2011	Began Relocation of LADWP Overhead Power Lines at Mulholland Bridge.
July 13, 2011	Completed installation of Void Slab Deck at Bridge 12 Constitution UC.
July 14, 2011	Completed Pouring Diaphragms 1, 2, and 3 at Bridge 21 Skirball OC.
July 16, 2011	Began Demolition of South Side of Bridge 22 Mulholland OC.
July 17, 2011	Completed Demolition of South Side of Bridge 22 Mulholland OC.
July 20, 2011	Completed Installation of Pre-cast Girders at Bridge 4SB Santa Monica UC.
July 26, 2011	Began Driving Piling at Bridge 8 NB from EB Wilshire, Bent 8.
August 1, 2011	Began installation of forms and rebar for Top Deck at Bridge 21, Skirball Center Drive.
August 3, 2011	Began work on the Interchange Ramp from Westbound I-10 to Northbound I-405.
August 6, 2011	Began work installing Top Deck at Bridge 4 Santa Monica Blvd.
August 24, 2011	Completed pouring the Top Deck at Bridge 13, Montana Ave.
August 26, 2011	Completed installation of Footing & Pile Cap/Abutment-Wingwalls/Bridge Bearing Bridge 3 Olympic Blvd.
August 31, 2011	Completed pouring the Top Deck at South Side of Bridge 16, Sunset Blvd.
September 15, 2011	Completed installation of Top Deck and Diaphragm on Bridge 16, Sunset Blvd.
September 16, 2011	Completed pouring the Top Deck at Bridge 21, Skirball Center Drive.
September 23, 2011	Began construction of LADWP Power Utilities undergrounding ductbank between Stations 1740 and 1760.

CHRONOLOGY OF EVENTS (Cont'd)

September 27, 2011	Completed pouring curb and gutter on west side of Bridge 16, Sunset Blvd.
September 29, 2011	Completed pouring Lateral Retaining Walls #6, #7, and #8 at Retaining Wall 1720.
October 14, 2011	Completed pouring footing for Bent 2 at Bridge 22, Mulholland Drive.
October 17, 2011	Began installation of Bent 2 Forms at Bridge 22, Mulholland Drive.
October 18, 2011	Began construction activities at Bridge 18, Bel Air Crest.
October 22, 2011	New Bridge 16, Sunset Blvd. South Side opened to vehicle traffic.
October 27, 2011	Completed pouring Abutment 1 at Bridge 22, Mulholland Drive.
November 1, 2011	Began demolition of Bridge 16 Sunset Blvd. north side.
November 7, 2011	Began installation of CIDH Piles for I-10 Connector.
November 9, 2011	Completed demolition of Bridge 16 Sunset Blvd. north side.
November 22, 2011	Received the VA License to Enter agreement.
November 22, 2011	Completed pouring Bridge 22 Mulholland OC Bent 2 Columns.
November 22, 2011	Completed pouring Bridge 5 Ohio NB Abutments 1 & 2.
December 1, 2011	MSE Wall 1897 along NB Sepulveda Blvd. south of Skirball Center Drive ruptures. Kiewit stops work on all MSE Walls throughout the project and begins investigation into MSE Wall deficiencies.
December 1, 2011	Began 2 nd pouring of Bridge 22 Mulholland Abutment 1.
December 8, 2011	Completed subgrade for NM Connector.
December 17, 2011	Began installation of Precast Girders at Bridge 5A Ohio Ave.
December 19, 2011	Began installation of falsework beams for Bridge 15 Sunset on-ramp.

CHRONOLOGY OF EVENTS (Cont'd)

December 19, 2011	Began driving piles for Bridge 16 Sunset Blvd. Bent 3.
January 4, 2012	Began De-construction of MSE Wall 1738A.
January 9, 2012	Began De-construction of MSE Wall 1665.
January 16, 2012	Completed demolition of the I-405 median barrier at Mulholland Bridge and began erection of Falsework.
January 19, 2012	Began pouring footings for Soundwalls at Retaining Walls 1720 and 1730.
January 20, 2012	Completed pouring column # 1 @ Sunset Blvd. Bridge.
January 25, 2012	Began De-construction of MSE Wall 1634.
January 27, 2012	Kiewit stopped work on all Soil Nail Walls due to developing cracks, pending investigation.
January 31, 2012	Poured columns at Bel Air Crest Bridge.
February 13, 2012	Construction activities are started in Area 5 at Bridge 18 Getty Center UC and Bridge 19 Sepulveda UC.
February 15, 2012	De-construction of MSE Wall 1738A at Sunset NB Off-Ramp is completed.
February 18, 2012	Piers and Columns are poured for Bridge 16 Sunset Blvd.
February 18, 2012	LADWP completes installation of new underground cabling in ductbank along Sepulveda Blvd and Wilshire Ave. Final paving of Sepulveda trench is completed.
February 28, 2012	Kiewit submits notification to LACMTA that all remaining MSE Walls, with the exceptions of completed MSE Walls 1619 and 1942B will be de-constructed.
March 2, 2012	Full NB Freeway Closure at Mulholland Bridge to install Falsework Girders.
March 6, 2012	Caltrans identifies a potential Safety Concern during Mulholland Bridge Falsework Girder Installation on the SB Side and orders girders to be removed. Caltrans issues Stop Work Order pending review of Girder Installation Process.

CHRONOLOGY OF EVENTS (Cont'd)

March 8, 2012	Caltrans completes review of Girder Installation Process and authorizes resumption of installation of Falsework Girders at Mulholland Bridge. SB Side Falsework Girders are installed.
March 22, 2012	Concrete Girders are installed at Bridge 5B Ohio UC SB side.
April 7, 2012	Kiewit completes installation of Mulholland Bridge (South Side) Sheet Decking and begins installation of structural rebar.
April 10, 2012	Kiewit resumes construction of MSE Walls. Construction of Wall 1672 new leveling pad is started.
April 14, 2012	Kiewit begins installation of top deck and diaphragm structural rebar at Bridge 4 Santa Monica UC.
April 20, 2012	Kiewit pours concrete top deck, curb, and gutter at Bridge 9 Wilshire UC.
May 1, 2012	Begin installation of Concrete girders at Bridge 16 Sunset OC North Side.
May 4, 2012	Kiewit resumes construction of MSE Walls using an approved new Wall Panel Vendor and Construction Plan. Construction begins at MSE Wall 1672 along Sepulveda Blvd. north of Wilshire Blvd.
May 4, 2012	Completion of installation of Concrete Girders at Bridge 16 Sunset OC North Side.
May 18, 2012	Construction of MSE Wall 1808 along Sepulveda Blvd. north of Getty Center Drive is started using new Wall Panels and Construction Plan.
May 24, 2012	Structural construction is started within the GSA Property. Construction of Bridge 7 Bent 3 is started.
May 31, 2012	Construction of MSE Wall 1686 along Sepulveda Blvd. north of Constitution Drive is started using new Wall Panels and Construction Plan.

CHRONOLOGY OF EVENTS (Cont'd)

June 2, 2012	NW1 Ramp from WB I-10 to NB I-405 is opened for traffic.
June 6, 2012	GSA Microwave Security System is installed.
June 7, 2012	Bridge 7 NB I-405 to EB Wilshire Off-ramp Columns for Bents 3 and 4 are constructed on GSA Property.
June 22, 2012	90-Day Shutdown of Bridges 10 & 11 NB I-405 to WB Wilshire and WB Wilshire to NB I-405 commenced.
June 27, 2012	Demolition of existing Bridges 10 & 11 is completed.
July 15, 2012	Bridge 21 Skirball Center Drive, North side, is opened to traffic.
July 20, 2012	Bridge 22 Mulholland Drive, Top Deck is poured.
July 21, 2012	Bridges 10 & 11 Pre-cast Girders are installed.
July 30, 2012	Bridge 21 Skirball Center Drive, South Side, Demolition is started.
August 3, 2012	Bridge 21 Skirball Center Drive, South Side, Demolition is Completed.
August 10, 2012	Bridges 10 & 11 Top Deck is Poured.
August 23, 2012	Bridge 16 Sunset Blvd. Top Deck is Poured.
August 31, 2012	Bridges 10 & 11 are Opened for Traffic.
September 4, 2012	Bridge 7 Falsework installation begins.
September 24, 2012	Bridge 16 is fully opened for traffic.
September 24, 2012	Bridge 22 South Side is opened for traffic.
September 28, 2012	Began demolition of the north side of Mulholland Bridge 22.
September 30, 2012	Complete demolition of the north side of Mulholland Bridge 22.
October 1, 2012	Began construction activities for Bridge 17, Church Lane UC.

CHRONOLOGY OF EVENTS (Cont'd)

October 1, 2012	Began construction activities for Bridge 22, Mulholland OC north side.
October 15, 2012	MSE Wall 1897 reconstruction is completed.
October 19, 2012	Bridge 15 Sunset NB On-ramp, top deck is poured.
October 23, 2012	RW 1720 punch list work begins.
November 4, 2012	Re-aligned Sepulveda Blvd. to the east at Bronwood Apartments.
November 6, 2012	Begin construction activities for Bridge 14 Sunset NB Off-ramp.
November 8, 2012	Bridges 6A and 6B SB Off-ramp to EB Wilshire abutments poured.
November 28, 2012	Completed re-striping and realignment of Sepulveda Blvd. to the east at walls 1720 & 1730.
November 29, 2012	Completed pouring Top Deck at Bridge 1 I-10 Connector.
December 4, 2012	Completed installation of Pre-Cast Girders at Bridge 2 Exposition.
December 6, 2012	Sepulveda Blvd. is restriped and realigned from Montana Avenue to Bridge 14 NB Sunset Off-Ramp.
December 20, 2012	Completed pouring Top Deck at Bridge 18 Getty Center Drive NB and SB.
December 21, 2012	Completed girder installation at Bridge 6A and 6B SB Wilshire Off-Ramp.
January 4, 2013	False work for Bridge 7 is completed allowing construction of CIP Box Girder to progress from abutment to abutment.
January 4, 2013	Completed installation of 10' diameter CIDH Piles for Bridge 14 Construction of foundation piles is started.
January 15, 2013	Completed pouring outside stems for Bridge 8.

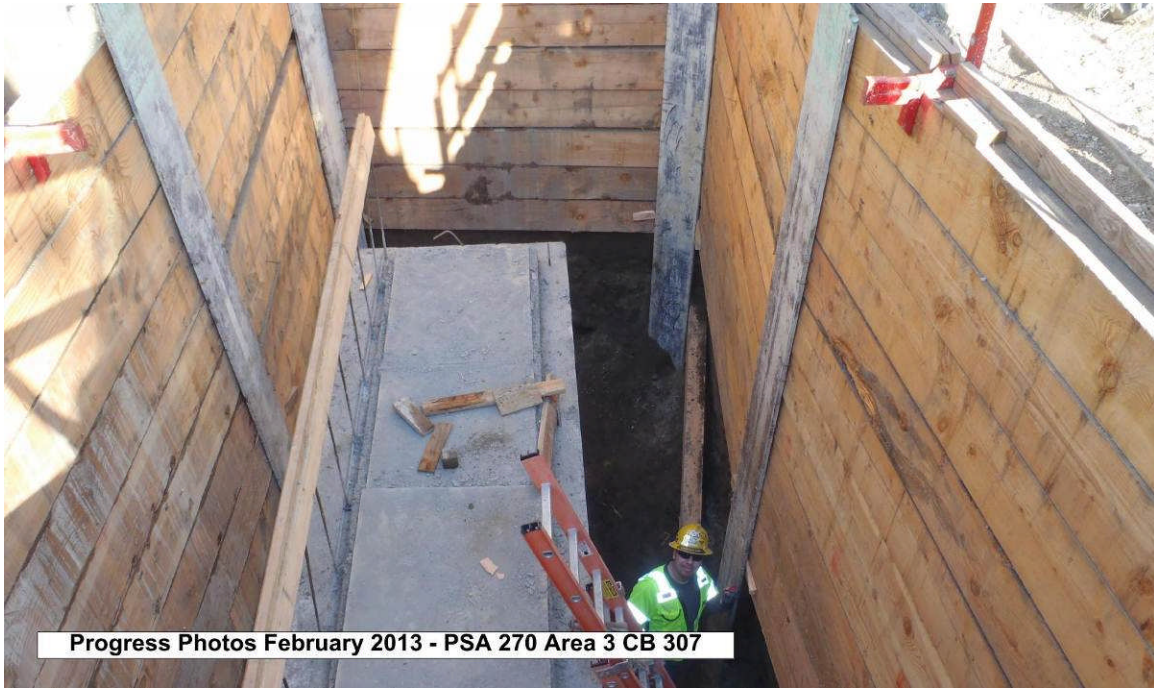
CHRONOLOGY OF EVENTS (Cont'd)

January 23, 2013	Completed installation of top deck metal decking for Bridge 6A.
February 3, 2013	Opened new SB 405 On-ramp from Skirball Center Drive.
February 11, 2013	Began installation of Falsework for Mulholland Bridge north side.
February 21, 2013	Opened new SB 405 On-ramp from EB Wilshire Blvd.
February 22, 2013	Opened new NB 405 On-ramp from Cotner Ave. at Olympic Blvd.

CONSTRUCTION PHOTOGRAPHS



CONSTRUCTION PHOTOGRAPHS



CONSTRUCTION PHOTOGRAPHS



Progress Photos February 2013 - PSA 296 Pouring Walls for CB 502

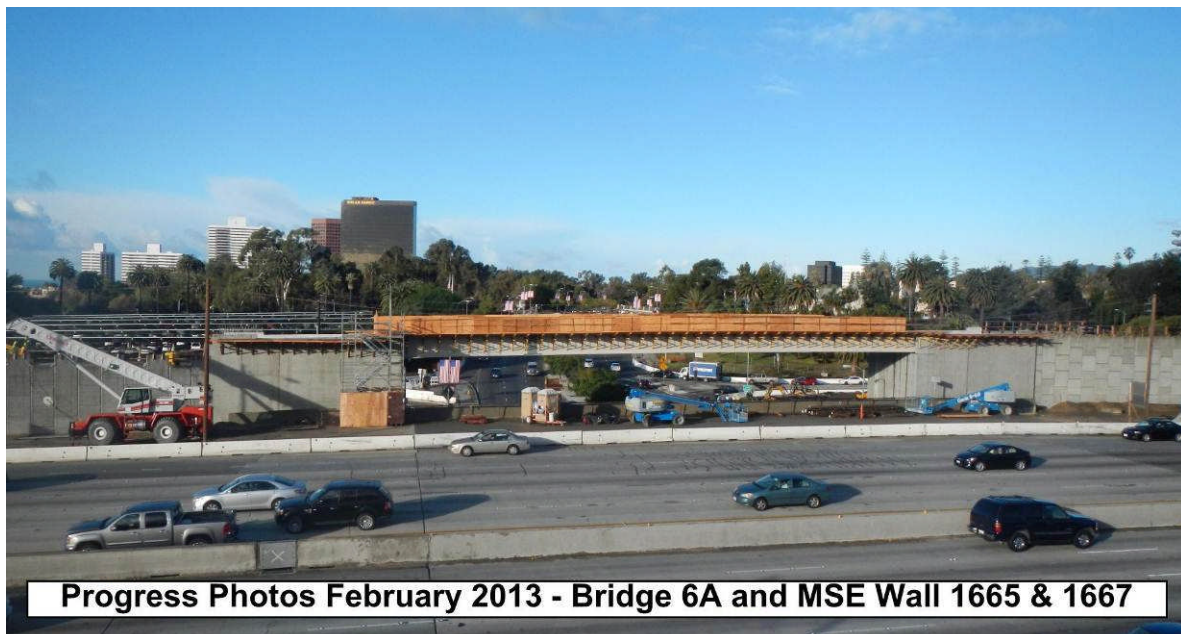


Progress Photos February 2013 - Bridge 21 Abutment 4,
Retaining Wall Poured

CONSTRUCTION PHOTOGRAPHS



Progress Photos February 2013 - NB Skirball On and Off Ramps Switch



Progress Photos February 2013 - Bridge 6A and MSE Wall 1665 & 1667

CONSTRUCTION PHOTOGRAPHS



APPENDICES

COST AND BUDGET TERMINOLOGY

APPROVED BUDGET: The Approved Project Budget as established by Metro Board of Directors at the time it authorizes Construction Project Management Division to commence full design and construction of the project (Project Adoption).

CURRENT BUDGET: The Original Budget plus all budget amendments approved by formal Metro action. Also referred to as Approved Budget.

CURRENT FORECAST: Evaluation of costs to go combined with actual expenditures.

COMMITMENTS: The total of actual contract awards, executed change orders or amendments, approved work orders of Master Cooperative Agreements, offers accepted for purchase of real estate, and other Metro actions which have been spent or result in the obligation of specific expenditures at a future time.

EXPENDITURES: The total dollar amount of funds expended by Metro for contractor or consultant invoices, third party invoices, staff salaries, real estate and other expenses that is reported in Metro's Financial Information System (FIS).

PROJECT APPROVAL & ENVIRONMENTAL DOCUMENTS: Costs for agency staff and consulting contracts leading to project approval and environmental clearances.

PLANS, SPECS. & ENGINEERING: Agency staff and consulting contract costs between the initial project approval and environmental clearances but prior to start of construction.

RIGHT-OF-WAY SUPPORT: Costs for agency staff involved in real estate appraisal and parcel purchase activities and agency staff costs involved in utility relocations and third party agreements. Includes real estate appraisal costs.

CONSTRUCTION SUPPORT: Agency staff and consulting contract costs occurring during the construction phase of the project.

CONSTRUCTION: Costs for highway construction, bridge and on/off ramp construction and modifications, retaining wall and sound wall construction. Includes final design costs by Design/Build Contractor.

RIGHT-OF-WAY CAPITAL: Costs for real estate parcel purchases and utility relocations costs after approval of utility company agreements. Includes costs for Master Cooperative Agreements after approval by agencies.

APPENDIX LIST OF ACRONYMS

ARRA	American Recovery & Reinvestment Act
AWIS	Automated Work Zone Information Systems
CADD	Computer Aided Drafting and Design
CALTRANS	California Department of Transportation
CCTV	Closed Circuit Television
CD	Calendar Day
CDFG	California Department of Fish and Game
CEQA	California Environmental Quality Act
CM	Construction Manager
CMAC	Congestion Mitigation Air Quality
CMIA	Cash Management Improvement Act
CMS	Changeable Message Signs
CN	Change Notice
CO	Change Order
COE	Corps of Engineers
COLA	City Of Los Angeles
CPM	Critical Path Method
CPUC	California Public Utilities Commission
CR	Camera Ready
CTC	California Transportation Commission
D-B	Design-Build
D-B-B	Design-Bid-Build
DD	Design Development
DEIR	Draft Environmental Impact Report
DR	Deficiency Report
DWP	Department of Water and Power
EIR	Environmental Impact Report
EIS	Environmental Impact Statement
FD	Final Design
FEIR	Final Environmental Impact Report
FHWA	Federal Highway Administration
FIS	Financial Information System
FOCT	Fiber Optics Cable Transmission System
FTE	Full Time Equivalent
GDSR	Geotechnical Design Summary Report
GSA	General Services Administration
GSRD	Gross Solids Removal Devices
HAR	Highway Advisory Radio
HOV	High Occupancy Vehicle
IFB	Invitation for Bid
IPO	Integrated Project Office
ITS	Intelligent Transportation Systems

APPENDIX
LIST OF ACRONYMS (Continued)

LA	Los Angeles
LABOE	Los Angeles Bureau of Engineering
LACFCD	Los Angeles County Flood Control District
LADOT	Los Angeles Department of Transportation
LADPW	Los Angeles Department of Public Works
LADWP	Los Angeles Department of Water and Power
LARTMC	Los Angeles Regional Transportation Management Center
LFAT	Local Field Acceptance Test
LNTP	Limited Notice To Proceed
LONP	Letter Of No Prejudice
LOP	Life of Project
MCA	Master Cooperative Agreement
METRO	Los Angeles County Metropolitan Transportation Authority
MIS	Major Investment Study
MOT	Maintenance of Traffic
MPSR	Monthly Project Status Report
MSE	Mechanically Stabilized Earth
MVDS	Microwave Vehicle Detection System
MVP	Maintenance Vehicle Pullouts
MWD	Metropolitan Water District
N/A	Not Applicable
NCR	Non-Conformance Report
NEPA	National Environmental Quality Act
NHS	National Highway System
NOA	Notice of Award
NTE	Not to Exceed
NTP	Notice To Proceed
NTSC	National Television System Committee
P6	Primavera Project Planner® (scheduling software)
PC	Project Control
PE	Preliminary Engineering
PIP	Project Implementation Plan
PM	Project Manager
PMA	Project Management Assistance
PMP	Project Management Plan
P&P	Policies & Procedures
PR	Project Report
PS&E	Plans, Specs & Engineering
PSR	Project Study Report
QA	Quality Assurance
QAR	Quality Assurance Report

APPENDIX
LIST OF ACRONYMS (Continued)

QC	Quality Control
QPSR	Quarterly Project Status Report
RFC	Request For Change or Released for Construction (based on context)
RFP	Request For Proposal
RMS	Ramp Metering Systems
ROM	Rough Order of Magnitude
ROW	Right-Of-Way
SIT	System Integration Testing
RSTP	Regional Surface Transportation Program
RWQCB	Regional Water Quality Control Board
SAFETEA-LU	Safe, Accountable, Flexible, Efficient Transportation Equity Act: A Legacy for Users
SCE	Southern California Edison
SONET	Synchronous Optical Network
SOV	Schedule Of Value
SOW	Statement Of Work
SP	Special Provision
TBD	To Be Determined
TCRP	Traffic Congestion Relief Program
TMS/CS	Traffic Monitoring Stations/Count Stations
TPM	Transportation Management Plan
VE	Value Engineering
WBS	Work Breakdown Structure
WP	Work Package