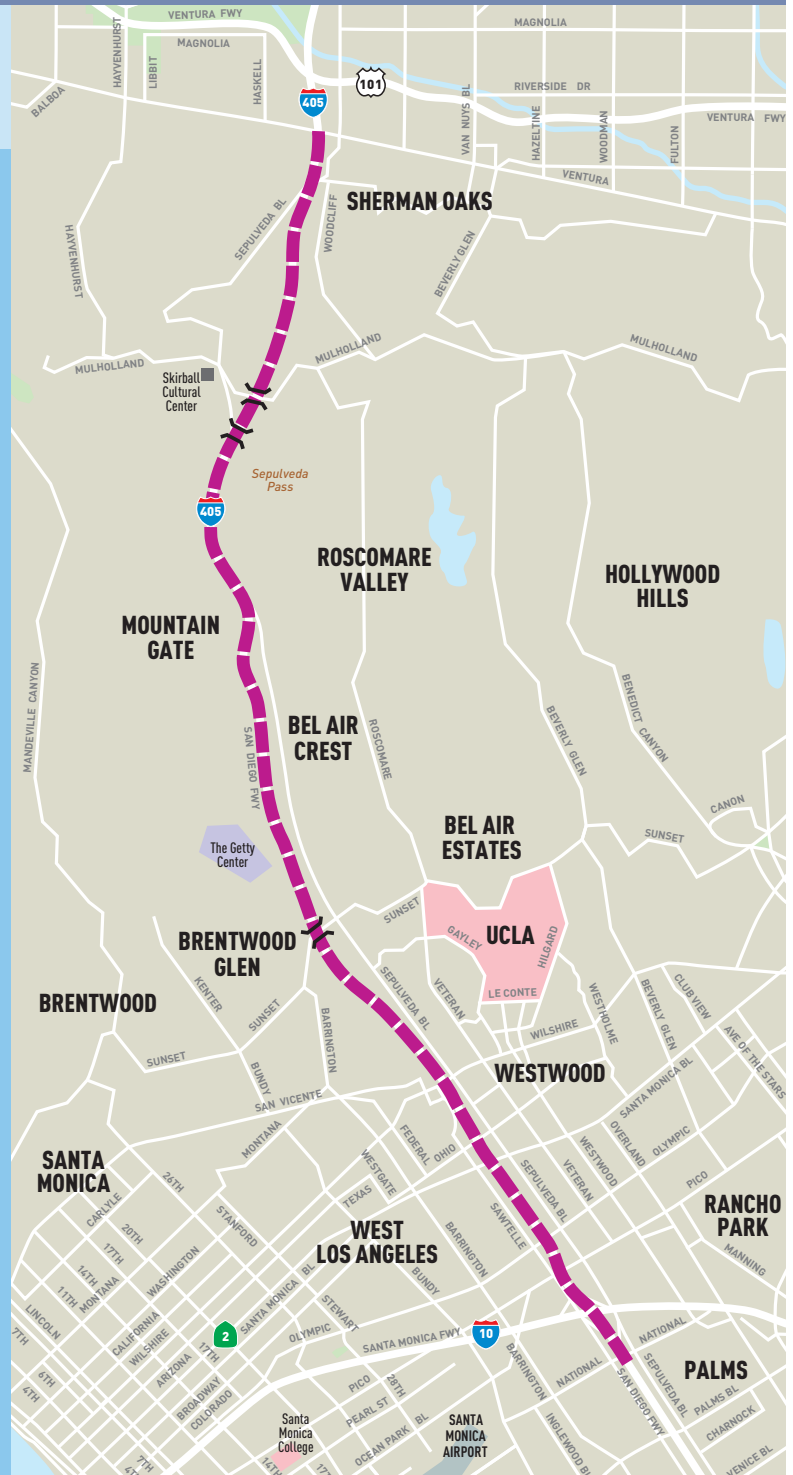




# I-405 Sepulveda Pass Improvements Project

## QUARTERLY PROJECT STATUS REPORT



11-00623P1 © 2010 LACMTA © 2010 LACMTA

# **INTERSTATE 405 SEPULVEDA PASS IMPROVEMENTS PROJECT**

## **QUARTERLY PROJECT STATUS REPORT**


THE PREPARATION OF THIS DOCUMENT HAS BEEN FINANCED IN PART THROUGH GRANTS FROM THE FEDERAL HIGHWAY ADMINISTRATION (FHWA) AND THE AMERICAN RECOVERY AND REINVESTMENT ACT (ARRA) AND FUNDS FROM THE STATE OF CALIFORNIA.

**DECEMBER 2014**

## TABLE OF CONTENTS

|   | Page No. |
|---|----------|
| Project Summary.....                      | 1        |
| Project Overview & Status.....            | 2-4      |
| Management Issues.....                    | 5-7      |
| Project Status                            |          |
| • Project Scope.....                      | 8-9      |
| • Schedule                                |          |
| ○ Key Milestones Six-Month Lookahead..... | 10       |
| ○ Project Summary Schedule .....          | 11       |
| ○ Critical Path Narrative.....            | 12       |
| • Project Cost Status.....                | 13-14    |
| • Financial/Grant Status.....             | 15-16    |
| • Staffing.....                           | 17-19    |
| • Real Estate.....                        | 20       |
| • Environmental.....                      | 21       |
| • Community Relations.....                | 22       |
| • Quality Assurance.....                  | 23       |
| • Safety and Security Status.....         | 23       |
| • Third Party.....                        | 24       |
| Contract C0882 Status.....                | 25       |
| Chronology of Events.....                 | 26-41    |
| Construction Photographs.....             | 42-44    |
| Appendices.....                           | 45-48    |

**PROJECT SUMMARY**

|  |                       |                        |                         |  |                   |                     |                       |
|--|-----------------------|------------------------|-------------------------|--|-------------------|---------------------|-----------------------|
| <b>LOCATION: I-405 Sepulveda Pass Improvements Project</b>   |                       |                        |                         | <b>CONSTRUCTION MANAGEMENT CONSULTANT: Stantec</b>   |                   |                     |                       |
| <b>DESIGN/CONSULTANT: Kiewit (D/B)</b>   |                       |                        |                         | <b>CONTRACTOR: Kiewit (D/B)</b>  |                   |                     |                       |
| <b>PROJECT PHOTO</b>   |                       |                        |                         | <b>WORK COMPLETED PAST MONTH</b>   |                   |                     |                       |
| <p><b>Slope Stabilization Behind Wall 2011</b></p>  |                       |                        |                         | <ul style="list-style-type: none"> <li>- Irrigation and Landscaping installation continues</li> <li>- Traffic Signals and Permanent Lighting installation continues</li> <li>- Raising of Manholes &amp; other Utility appurtenances to Pavement Elevation throughout the Project</li> </ul> |                   |                     |                       |
| <b>EXPENDITURE STATUS</b>  |                       |                        |                         | <b>SCHEDULE ASSESSMENT</b>   |                   |                     |                       |
| <b>(\$ In Millions)</b>  |                       |                        |                         |  |                   |                     |                       |
| <b>ACTIVITIES</b>  | <b>CURRENT BUDGET</b> | <b>EXPENDED AMOUNT</b> | <b>PERCENT EXPENDED</b> | <b>MAJOR SCHEDULE ACTIVITIES</b>   | <b>PRIOR PLAN</b> | <b>CURRENT PLAN</b> | <b>VARIANCE WEEKS</b> |
| <b>DESIGN (Preliminary)</b><br>(PA&ED/PS&E)  | \$47.0                | \$47.0                 | 100.0%                  | <b>Environmental</b>   |                   |                     |                       |
| <b>RIGHT-OF-WAY</b><br>(Capital/Support/3rd Party)   | \$108.7               | \$67.0                 | 61.6%                   | End Environmental Phase (PA&ED)  | Mar-08            | Mar-08              | Complete              |
| <b>CONSTRUCTION</b><br>(Construction Support/Construction)   | \$983.1               | \$962.1                | 97.9%                   | <b>Design</b>  |                   |                     |                       |
| <b>Reversible Lane</b>   | \$2.6                 | \$1.5                  | 57.7%                   | End Design Support Phase (D/B)   | Dec-13            | Jan-15              | 57                    |
| <b>TOTAL</b>   | <b>\$1,141.4</b>      | <b>\$1,077.6</b>       | <b>94.4%</b>            | <b>Right-of-Way</b>  |                   |                     |                       |
|  |                       |                        |                         | ROW Certification  | Dec-13            | Jan-15              | 57                    |
| <b>AREAS OF CONCERN</b>  |                       |                        |                         | <b>Construction</b>  |                   |                     |                       |
| Verizon Vault Permanent Replacement at Ovada Place-MOU CoLA/LACMTA   |                       |                        |                         | Opening of SB I-405 Realignment  | May-14            | May-14              | Complete              |
| Utility Encroachment Exception Approval by Caltrans  |                       |                        |                         | Substantial Completion   | Aug-14            | Jan-15              | 24                    |
| Fact-Sheet Approval by Caltrans  |                       |                        |                         |  |                   |                     |                       |
| CMS at Getty Center  |                       |                        |                         |  |                   |                     |                       |
| Deficiencies at Bridge 20 and Bridge 22  |                       |                        |                         |  |                   |                     |                       |
| <b>ROW ACQUISITION (Caltrans)</b>  |                       |                        |                         | <b>CRITICAL ACTIVITIES / 3 MONTH LOOK AHEAD</b>  |                   |                     |                       |
| PARCELS ACQUIRED   |                       |                        | 66                      | Traffic Signals and Lighting work Completion   |                   |                     |                       |
| PARCELS NOT ACQUIRED (Salvation Army-Litigation Pending)   |                       |                        | 1                       | Landscaping and Irrigation work Completion   |                   |                     |                       |
| DECERTIFIED PARCELS  |                       |                        | 12                      | Project Wide Substantial Completion - End of January 2015  |                   |                     |                       |
| PAST DUE WITH NO APPARENT SCHEDULE IMPACT  |                       |                        | 0                       | Project Wide Punchlist Work Begins - End of January 2015   |                   |                     |                       |
| ADDITIONAL IMPACTS REQUIRING APPRAISAL MAPS  |                       |                        | 0                       |  |                   |                     |                       |
| <b>TOTAL REQUIRED PARCELS</b>  |                       |                        | <b>79</b>               |  |                   |                     |                       |

## PROJECT OVERVIEW & STATUS

*The I-405 Sepulveda Pass Improvements Project will add a 10-mile HOV lane and improve supporting infrastructure such as ramps, bridges, and soundwalls on the San Diego Freeway (I-405); while widening lanes from the Santa Monica Freeway (I-10) to Ventura Freeway (U.S. 101). This project will reduce existing and forecasted traffic congestion on the I-405 and enhance traffic operations by adding freeway capacity in an area that experiences heavy congestion. In addition to these modifications, the project will improve both existing and future mobility and enhance safety throughout the corridor. Project benefits include a decrease in commuter time, reduce air pollution, and promote ridesharing. The I-405 Sepulveda Pass Improvements Project features include:*

- *Add a 10-mile HOV lane on the northbound I-405 between the I-10 and US-101 freeways*
- *Remove and replace the Skirball Center, Sunset Blvd. and Mulholland Dr. Bridges*
- *Realign 20 on and off ramps*
- *Widen 20 existing overpasses and structures*
- *Construct approximately 18 miles of retaining walls and soundwalls*

*Interstate 405 (I-405), also known as the San Diego Freeway, is a north/south route classified as an interstate/interregional loop freeway. It is part of the National Highway System (NHS), originating at the I-5 in Orange County in the City of Irvine and terminating at the I-5 in Los Angeles County, in the City of Los Angeles near the community of Mission Hills.*

*The design-build contract Notice to Proceed (NTP) was issued on June 2, 2009 with a Substantial Completion Deadline of May 31, 2013. Currently, the substantial completion is expected to occur in January 2015.*

### **Completion of Getty's North Canyon Work**

Metro has been trying to complete the North Canyon work for two years, facing numerous issues involving Kiewit and Getty. It appears that the best path forward is to de-scope Kiewit's remaining work and give it to Getty. We have a tentative agreement with Getty to implement this and we are currently working to that plan.

### **Claims**

In regards to Kiewit's Claim 86, Metro has informed the DRB that Metro does not believe this claim is proper for hearing by the DRB for the basic reason that the claim is not allowed by the contract as it is not a discrete event or impact with supporting documentation to understand the nature of the impact, whether for quantum or impact to schedule.

Metro will continue to resolve claims with Kiewit through several methods; (1) Determine merit and negotiate without utilizing the DRB process; (2) DRB process as requested by Kiewit other than claim 86; 3) Any other process the contract allows, including referring to court.

In past reports Metro has expressed frustration with Kiewit's accounting of Provisional Sums payments, T&M payments, Claims, and Base Work because the numbers were difficult, if not impossible, to reconcile on Kiewit's reports. Metro started a process of creating our own report to track Kiewit payment issues which has taken a significant effort with the last several

## PROJECT OVERVIEW & STATUS (Cont'd)

months being very unproductive because Kiewit has not delivered the information needed to resolve numerous smaller claims. Over the next couple of months we will start addressing only contractually based requests from Kiewit: Provisional Sum request for payment, CCO requests, and Claims that have followed the contract process.

Claims that have not been resolved after requests for information and fact finding will be resolved by Metro determining merit and compensation, and issuing unilateral CCO.

### DRB Claims Schedule

One claim was heard in November 2014:

Claim 73 Additional Impacts for Phases I & II Undergrounding Utility 196A – Metro rejected the DRB recommendation on quantum.

One claim was heard in December 2014:

Walls 1720/1730/1746 – Quantum – Metro is reviewing DRB recommendation

One claim is scheduled to be heard in January 2015:

Markups for PSAs over the original \$157M

Two claims are scheduled to be heard in February 2015:

Claim 62 – Dissipator quantum

Claim 81 – Traffic Signals quantum

### Cost Forecasting

Project recognizes three (3) key areas of cost increase:

- 1) Labor from Caltrans, Metro, Consultant, and City – This is being caused by the schedule delay and keeping staff onboard longer than anticipated. In addition, Caltrans has been charging significant amount of hours for some time which has little to do with delay, but their interpretation of what is needed to perform Independent Quality Assurance.
- 2) Claims – The Contractor has always had Potential Impact letters and has reserved its right to claim areas of the work. But to this point, they have not given us an idea of what they would do with some of these claims. For example, the Signalization claim noted above was rejected 3.5 years ago with no action by Kiewit until 6 months ago. Therefore, Metro adjusted our recent forecast cost-to-complete based on Kiewit's latest indication that they would like to hear almost all claims at the DRB.
- 3) ROW capital billings by Caltrans are reported to Metro after the fact. This was initially reported going over budget according to Caltrans billing documentation. Metro and Caltrans are in the process of reconciling these cost issues and it appears that there was double counting of these costs plus Caltrans was anticipating unknowns that do

## PROJECT OVERVIEW & STATUS (Cont'd)

not appear to be real. A credit back to the construction funds is a real possibility and we currently waiting for Caltrans to finalize ROW costs to determine availability of these funds.

Forecasting costs for labor is real and we expect the cost of the project to increase with little control over these costs as they are associated with an impact. ROW is being verified by Metro and the control of this is in Caltrans authority to administer; Metro can only verify that these costs are appropriate. The costs of Claims are dependent on Kiewit requesting a hearing and the outcome of those hearings. The swing on these issues is significant (\$46.4M) and we expect over the next several months a significant dollar amount of claims to be resolved.

### **Cost Recovery**

I-405 Team is putting together a list of issues that are considered improvements, excessive mitigations, or just requests from Caltrans, City, and County Agencies that contributed to the LOP Budget increase. Some of these are well documented, some are not. Examples include the Getty work and ramp improvements (Caltrans), widening of Sepulveda and slide repairs at Sepulveda and Homedale (City), and turn pocket SB Sepulveda at Wilshire (County).

## MANAGEMENT ISSUES

**Concern No. 1:** Align I-405 Closer to the Getty Parking Structure (96" MWD Waterline)

**Status/Action** As stated in previous monthly reports Kiewit is not willing to work with Metro/Getty/Caltrans to complete the work in the North Canyon area. Metro and Caltrans have been left with no alternative other than requesting Getty to self-perform this work. We have been working on the Scope of the final work remaining in the North Canyon with Getty and it appears we have conceptual agreement. Couple of areas left to be resolved: leaving open a section of concrete barrier to allow for Getty self-performed work and Sign foundations along Sepulveda.

**Concern No. 2:** Provisional Sums

**Status/Action** There is a significant cost increase in Provisional Sums caused by unknown utility conflicts at bid time. Currently, Project is reviewing Utility scopes to verify their accuracy and identify other issues, such as future changes, that could impact the project later. In addition, the Project is actively pushing Kiewit to forward-price all relocations and stop Time and Material (T&M), except in emergency type situations. Kiewit has exceeded original estimates by double in some cases which has made resolution difficult, but Project is working the issue with Kiewit. Kiewit brings up unsubstantiated Provisional Sum costs at Executive Partnering sessions. Exceeding T&M estimates and lack of timely requests for reimbursement are areas that impact Kiewit and Metro. Without details, Project is left with few options but to wait on information and keep working with Kiewit to resolve the issues. The above activities continue and there is a light at the end of the tunnel as long as Kiewit does not come up with additional PSA work not recognized at this time

**Concern No. 3:** Project Cost and Schedule Reassessment

**Status/Action** The current Life-of-Project (LOP) budget stands at \$1,141.4 million. As stated earlier in this report, Claim 86 is outside this discussion, and currently, Project has no way of knowing if any of Claim 86 has merit. Additionally, as noted earlier, Kiewit has been referring to other claims which Project is not aware of, has no idea if they are related to the already denied for merit, or if they are legitimate and could have impact on LOP budget. Recent cost analysis has shown upward pressure on the budget in a number of areas. Project has initiated weekly meetings to establish resolution for this issue.

Areas of potential concern:

- Labor costs for Caltrans, City, and Metro (including Consultants)
- Provisional Sums – Reconciling T&M work, additional payment requests from Kiewit
- Additional Claims from Kiewit



## MANAGEMENT ISSUES (Cont'd)

### Concern No. 4: Landscaping

**Status/Action** The Project and other Agencies are resolving the tree planting issue for the Project. City and Caltrans have agreed to landscaping, but the mitigation of trees is not resolved. County/City/Caltrans/Metro are working on this issue to determine an understanding on the number of trees to be mitigated.

The City has determined the need for 430 additional trees and Caltrans has indicated the need for 4000+ additional trees to be mitigated on the Project. Regardless, the Project footprint cannot take the above mentioned number of trees and Metro has been working with both City and Caltrans staff to address this, to no avail.

The Project, City, and Caltrans have been meeting on this issue continuously and options appear to be as follows:

- 1) Establish responsibility for planting – Kiewit or Metro
- 2) Determine who should do the work: Kiewit, City or Metro/Caltrans
- 3) Mitigation bank
- 4) Determine if it is possible to plant the trees outside the project limits
- 5) Finalizing pricing of this effort is being studied to help narrow down options

Metro is working on letter to City Department of Public Works BSS to identify what Metro/Caltrans will do for tree planting and Maintenance. The following conflict will be highlighted: 1 year of maintenance by our construction contract and several additional years being requested by City BSS.

### Concern No. 5: Commercial Issues

**Status/Action** Kiewit and Metro have many complaints on commercial issues. Currently, the Project is working on addressing final lists of issues to avoid unnecessary complaints and focus on list of unresolved issues. Metro has regenerated Kiewit's lists of commercial issues with Metro Comments incorporated in the document, which reflect that Kiewit has work to do to resolve these issues. In the past, Kiewit has been generous with criticism of Metro, and Metro has consistently pushed back that Kiewit is not accurate. Now that we are tracking Kiewit commercial issues, Kiewit has relented somewhat but we still have ways to go and we are staffing up to resolve these final commercial issues

Metro has added two additional teams, for a total of three teams, to deal with claims resolution composed of Contract Administrator, Estimator, Engineer, and support from the Segment Managers. We are, in good faith, continuing with the DRB process even though Metro has minimal confidence in them.

## MANAGEMENT ISSUES (Cont'd)

As noted above in Claims, Metro has not been satisfied with Kiewit's level of effort to resolve issues. At this time we will start looking to resolve smaller claims with Kiewit by doing merit and cost determination on our own if the negotiations with Kiewit do not succeed.

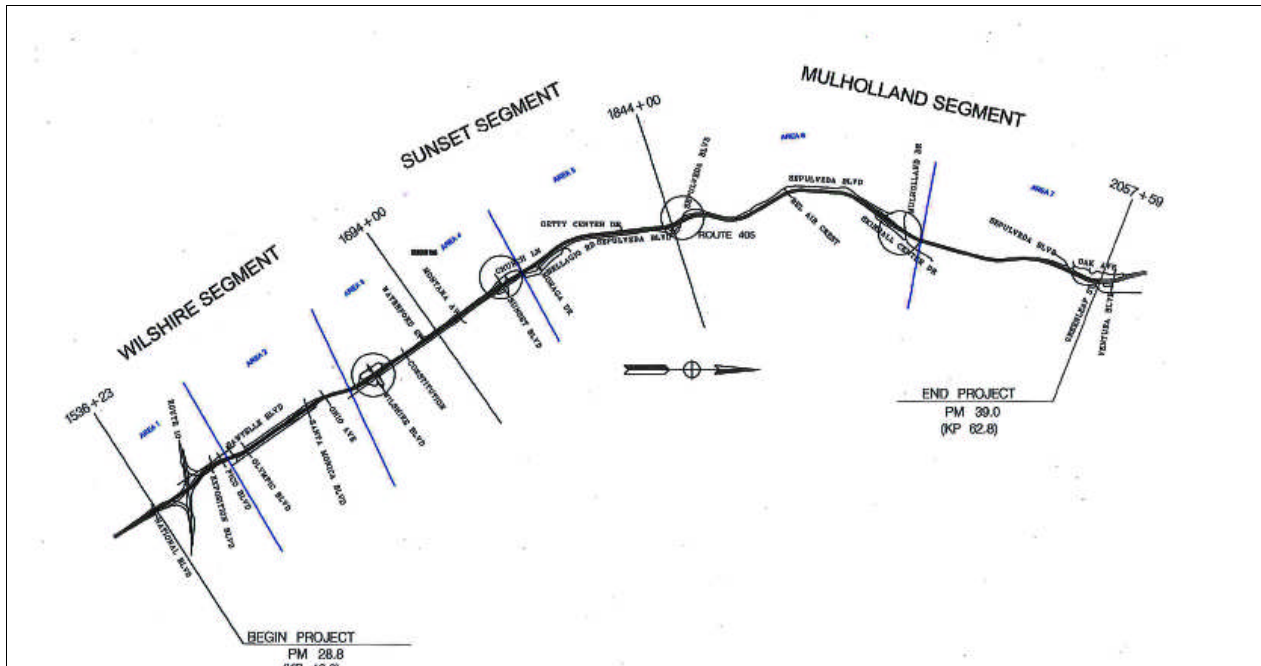
### **Concern No. 6:** Caltrans Staff and Real Estate Cost

**Status/Action** Recent cost analysis has shown a cost overrun for Caltrans staff budget cost. Caltrans staff costs have been brought up to Caltrans Executive Management in the past and Caltrans has informed Metro on every occasion that staff charges are appropriate. These overruns are ongoing issues and Project is looking for viable solutions to resolve these issues. Project is also re-assessing related potential cost increases.

### **Concern No. 7:** Potential Increases to Staffing Costs

**Status/Action** Delays to the project schedule are potentially expected to increase staffing costs. Studies are underway to forecast the remaining staffing costs based on revised staff demobilization plan.

## PROJECT SCOPE



The I-405 Sepulveda Pass Improvements Project is a Design-Build contract to add a 10-mile High Occupancy Vehicle (HOV) lane on the northbound San Diego Freeway (I-405) between the Santa Monica (I-10) and Ventura (US 101) Freeways. The purpose of the project is to reduce congestion by adding the HOV lane and closing the HOV gap, which will provide a continuous HOV lane from the Orange County Line to the I-405/US-101 interchange. The scope entails an 11-foot half median, one 12-foot HOV lane, a 1-foot HOV buffer, five 12-foot mixed-flow lanes (six 12-foot mixed-flow lanes between Mulholland Bridge and Valley Vista), and a 10-foot outside shoulder.

Most of the freeway widening required for this project occurs along the east side of I-405 along Sepulveda Blvd. between Montana Ave. and Moraga Dr. and between Getty Center Drive and the northbound Getty Center off-ramp. Sepulveda Blvd. is going to be slightly realigned at the relocated southbound I-405 Skirball Center Drive on/off-ramps in order to add a dual-left-turn lane to the on-ramp.

Some freeway widening also occurs along the west side of the freeway between Olympic Blvd. and Waterford Street, and between Bel Air Crest to just north of Ventura Blvd. This entails NB and SB lanes and shoulder standardization.

In order to reduce accidents associated with traffic on the ramps, project scope includes several interchange improvements as detailed below:

## PROJECT SCOPE

- Wilshire Blvd. interchange in both directions  
The northbound on-ramp from eastbound Wilshire Blvd. is grade-separated from the northbound off-ramp to westbound Wilshire Blvd. and from Sepulveda Blvd. The southbound off-ramp to eastbound Wilshire Blvd. is grade-separated from the southbound off-ramp to westbound Wilshire Blvd.
- Northbound I-405 Sunset Blvd. interchange  
The northbound I-405 off-ramp to eastbound Sunset Blvd. is widened to include one more lane. Two exclusive 12-foot lanes on the reconstructed Sunset Blvd. overcrossing and two 12-foot lanes on the on-ramp are provided for the northbound I-405 on-ramp from eastbound Sunset Blvd. In the eastbound direction three 12-foot lanes and in the westbound direction three 11-foot lanes are provided which solves the existing reduction from three lanes to two lanes in the eastbound direction. In both directions, 4-foot shoulders and 5-foot sidewalks as well as a 13-foot median are provided on the Sunset Blvd. overcrossing.
- The irregular northbound I-405 on/off-hook ramps at the Getty Center interchange are reconfigured to a standard diamond interchange to increase stopping sight distances in order to improve safety.
- The southbound I-405 Skirball Center Drive interchange is relocated to form a "T" intersection with Sepulveda Blvd. This eliminates the existing intersection at Skirball Off-Ramp and Skirball Center Drive.
- The southbound Valley Vista On and Off Ramps are realigned due to freeway widening and freeway mainline realignment between SB Valley Vista On/Off Ramps. The realignment will improve the stopping sight distance for the SB Valley Vista Off-Ramp. A third lane will be added to the SB Valley Vista On-Ramp to increase the ramp capacity.
- A second NB lane will be added on Skirball Center Drive between the Skirball Bridge and NB Skirball ramps.
- A NB auxiliary lane and bike lanes will be added on Sepulveda Blvd. on each direction, between the new SB Skirball ramps and Skirball Bridge.

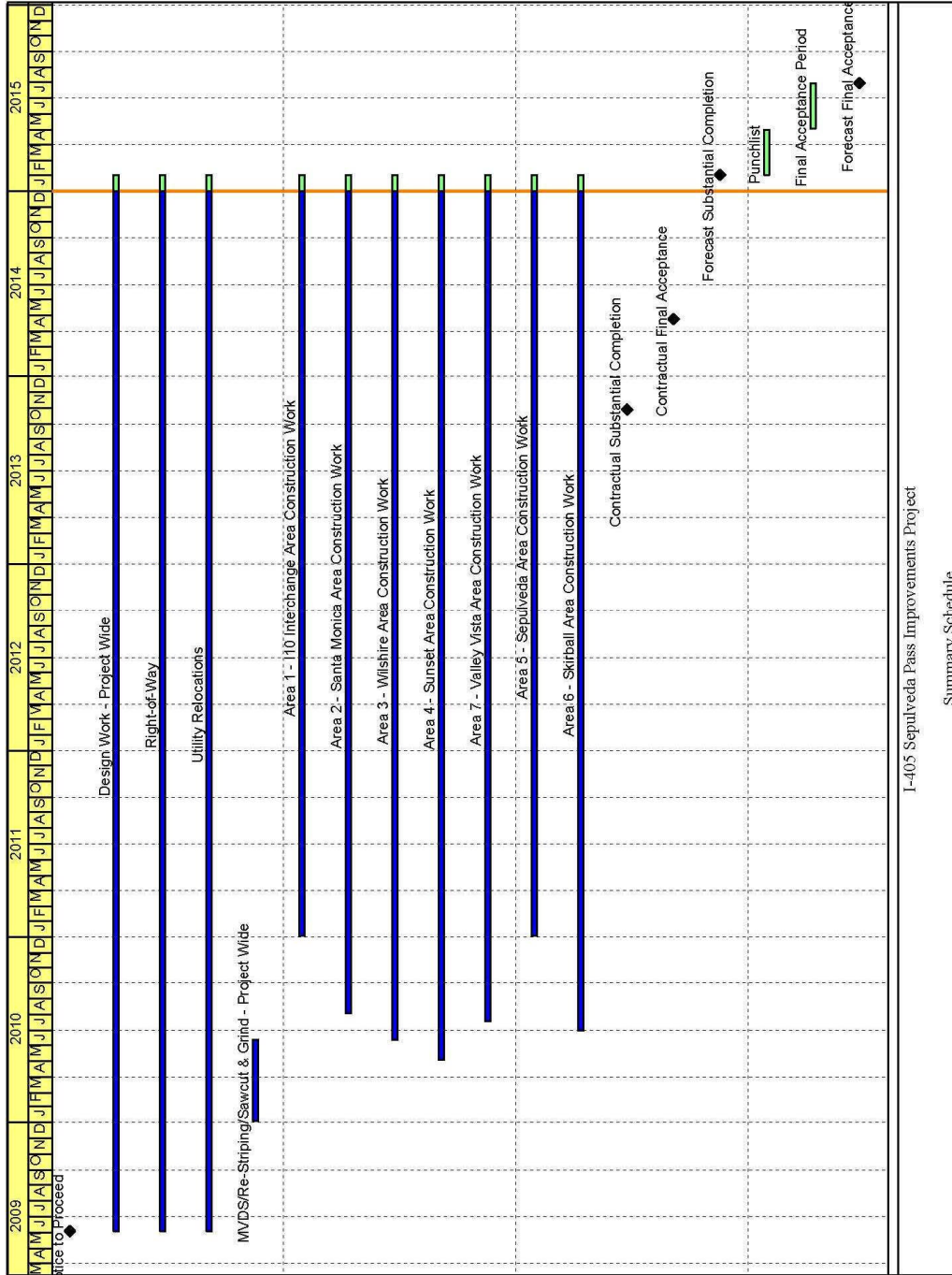
A total of 12 soundwalls and 54 retaining walls within the project limits are constructed at embankments where right-of-way is constrained.

A total of 12 undercrossings within the project limits are widened. Three overcrossings at Sunset Boulevard, Skirball Center Drive, and Mulholland Drive are replaced.

**KEY MILESTONE SCHEDULE SIX-MONTH LOOKAHEAD**

|   | Milestone Date | Dec-14 | Jan-15 | Feb-15 | Mar-15 | Apr-15 | May-15 |
|---|----------------|--------|--------|--------|--------|--------|--------|
| Area 6 - Skirball On-Ramps Irrigation Cabinet Wiring Termination Complete                     | 12/4/14A       | ○      |        |        |        |        |        |
| Area 7 - Valley Vista SB On-ramp Irrigation Cabinet Wiring Termination Complete               | 12/4/14A       | ○      |        |        |        |        |        |
| Area 4 - Sunset / Sunset Cul-de-sac ADA Ramps Completed                                       | 12/6/14A       | ○      |        |        |        |        |        |
| Area 2 - ADA Ramps at Ohio & Cotner Completed   | 12/10/14A      | ○      |        |        |        |        |        |
| Area 3 - ADA Ramps Completed  | 12/20/14A      | ○      |        |        |        |        |        |
| Project Wide - Punchlist Work Continues   | 1/31/15        |        | ○      |        |        |        |        |
| Project Wide - Landscaping, Irrigation, Lighting, and Traffic Signal Installation completion. | 2/28/15        |        |        | ○      |        |        |        |
| Area 1 I-10 Interchange - Punchlist Work Complete   | 3/1/15         |        |        |        | ○      |        |        |
| Area 2 Santa Monica - Punchlist Work Complete   | 3/1/15         |        |        |        | ○      |        |        |
| Area 3 Wilshire - Punchlist Work Complete   | 3/8/15         |        |        |        | ○      |        |        |
| Area 4 Sunset - Punchlist Work Complete   | 3/8/15         |        |        |        | ○      |        |        |
| Area 7 Valley Vista - Punchlist Work Complete   | 3/8/15         |        |        |        | ○      |        |        |
| Area 6 Skirball - Punchlist Work Complete   | 3/16/15        |        |        |        | ○      |        |        |
| Area 5 Sepulveda - Punchlist Work Complete  | 3/22/15        |        |        |        | ○      |        |        |
| Project Wide - Punchlist Work Completion  | 3/22/15        |        |        |        | ○      |        |        |
|           |                |        |        |        |        |        |        |

## PROJECT SUMMARY SCHEDULE



I-405 Sepulveda Pass Improvements Project

Summary Schedule

## **CRITICAL PATH NARRATIVE**

Based on the current project update, the primary critical path runs through irrigation and landscaping in Area 5. There is also a secondary path running through SB chain-link fence at Skirball Area and Permanent Street Lighting testing (Area 6).

## PROJECT COST STATUS

METRO CONSTRUCTION MANAGEMENT DIVISION / CALTRANS  
 COMBINED COST REPORT BY PHASE  
 PERIOD ENDING: DECEMBER 2014  
 DOLLARS IN THOUSANDS

| PHASE #                 | PHASE CODE | DESCRIPTION   | ORIGINAL BUDGET  | CURRENT BUDGET |                  | COMMITMENTS  |                  | EXPENDITURES |                  | CURRENT FORECAST |                  | BUDGET / FORECAST VARIANCE |
|-------------------------|------------|---|------------------|----------------|------------------|--------------|------------------|--------------|------------------|------------------|------------------|----------------------------|
|                         |            |   |                  | PERIOD         | TO DATE          | PERIOD       | TO DATE          | PERIOD       | TO DATE          | PERIOD           | TO DATE          |                            |
| 0                       | PA&ED      | PROJECT APPROVAL & ENVIRO DOCS                          | 22,000           | -              | 21,457           | -            | 21,078           | -            | 21,078           | -                | 21,457           | -                          |
| 1                       | PSE        | PLANS, SPECS, & ENGINEERING                             | 63,100           | -              | 25,560           | -            | 26,040           | -            | 26,012           | -                | 25,632           | 72                         |
| 2                       | RS         | RIGHT-OF-WAY SUPPORT                                    | 14,000           | -              | 9,543            | 47           | 8,817            | 47           | 8,817            | -                | 8,076            | (1,467)                    |
| 3                       | CS         | CONSTRUCTION SUPPORT                                    | 28,000           | -              | 67,813           | 560          | 113,201          | 1,097        | 108,795          | -                | 85,387           | 17,574                     |
| 4                       | C          | CONSTRUCTION  | 823,900          | -              | 915,241          | -            | 898,196          | -            | 854,393          | -                | 937,456          | 22,215                     |
| 9                       | RC         | RIGHT-OF-WAY CAPITAL                                    | 83,000           | -              | 99,186           | 612          | 67,054           | 887          | 59,078           | -                | 60,792           | (38,394)                   |
| <b>SUBTOTAL PROJECT</b> |            |   | <b>1,034,000</b> | <b>-</b>       | <b>1,138,800</b> | <b>1,219</b> | <b>1,134,387</b> | <b>2,031</b> | <b>1,078,174</b> | <b>-</b>         | <b>1,138,800</b> | <b>-</b>                   |
| 4                       | C          | CONSTRUCTION OF CITY OF L.A.'S REVERSIBLE LANES PROJECT | -                | -              | 2,600            | -            | 1,466            | -            | 1,466            | -                | 2,600            | -                          |
| 4                       | C          | CONSTRUCTION OF CALTRANS DRAINAGE SYSTEM REPAIRS        | -                | -              | -                | -            | -                | -            | -                | -                | -                | -                          |
| <b>TOTAL PROJECT</b>    |            |   | <b>1,034,000</b> | <b>-</b>       | <b>1,141,400</b> | <b>1,219</b> | <b>1,135,853</b> | <b>2,031</b> | <b>1,079,640</b> | <b>-</b>         | <b>1,141,400</b> | <b>-</b>                   |

NOTE: EXPENDITURES ARE CUMULATIVE THROUGH NOVEMBER 30, 2014.  
 KIEWIT EXPENDITURES ARE ONLY THROUGH AUGUST 31, 2014 DUE TO INVOICING LAG.

## PROJECT COST ANALYSIS

### Original and Current Budgets

The Original Budget reflects the Metro Board adopted Life-of-Project (LOP) Budget which was approved in April 2009 in the amount of \$1,034 million. An additional \$6.0 million was approved by the Metro Board in February 2011 to add the City of LA's Reversible Lanes Project Scope funded by the City of Los Angeles, along with \$8.0 million approved by the Metro Board to add Caltrans drainage system repairs to be funded by Caltrans. The Metro Board approved a decrease in the amount of \$3.4 M for the Reversible Lanes and an increase of \$26.1M for betterments. This brings the total Current Budget to \$1,070.7 million. In June and July 2013, the Metro Board approved increases of \$70.7 million which brings the Current Budget to \$1,141.4 million. The Project Cost Report has been updated to reflect this increase.

### Current Budget and Current Forecast

The Current Budget is \$1,141.4 million. Trends 1 through 312 have been approved and are included in the Current Forecast of \$1,141.4 million. Trends are being prepared for all Professional Services (including Metro, Caltrans and Stantec staff) and will be included in next month's report. Project Budget Change Requests (PBCR) 1 through 9 have been issued and included in the Current Budget.

### Commitments

The Commitments increased by \$1.2 million this period primarily for reimbursements to the Getty, DWP purchase orders and Metro/Caltrans staff charges. Total Commitments are \$1,135.9 million.



## PROJECT COST ANALYSIS (Cont'd)

### Expenditures

Expenditures are cumulative through November 2014. The period expenditures were \$2.0 million. Expenditures within the construction support phase included Metro and Caltrans project staff and miscellaneous consultant contract services. Costs in the right-of-way categories were for 3<sup>rd</sup> party Metro staff costs and for third party expenditures. Caltrans right-of-way expenditures for the period included staff charges for right-of-way support. No Kiewit invoices were processed by Metro Accounting this period. The \$1,079.6 million in Project Expenditures to date represents 94.6% of the Current Budget.

**FINANCIAL/GRANT STATUS – ORIGINAL SCOPE ACTIVITIES**

DECEMBER 2014

**STATUS OF FUNDS BY SOURCE**

| SOURCE                        | (A)                | (B)                           | (C)                         | (D)                | (D/B)       | (E)                | (E/B)      | (F)                                 | (F/B)      |
|-------------------------------|--------------------|-------------------------------|-----------------------------|--------------------|-------------|--------------------|------------|-------------------------------------|------------|
|                               | APPROVED<br>BUDGET | TOTAL<br>FUNDS<br>ANTICIPATED | TOTAL<br>FUNDS<br>AVAILABLE | COMMITMENTS<br>\$  | %           | EXPENDITURES<br>\$ | %          | BILLED TO FUNDING<br>SOURCE *<br>\$ | %          |
| FEDERAL SAFETEA-LU            | \$117.000          | \$117.000                     | \$117.000                   | \$117.000          | 100%        | \$117.000          | 100%       | \$69.896                            | 60%        |
| FEDERAL ARRA                  | \$189.900          | \$189.900                     | \$189.900                   | \$189.900          | 100%        | \$189.900          | 100%       | \$189.900                           | 100%       |
| STATE CMA                     | \$640.100          | \$640.100                     | \$640.100                   | \$640.100          | 100%        | \$640.100          | 100%       | \$630.661                           | 99%        |
| STATE TCRP                    | \$90.000           | \$90.000                      | \$90.000                    | \$90.000           | 100%        | \$90.000           | 100%       | \$46.026                            | 51%        |
| STATE RSTP                    | \$10.100           | \$10.100                      | \$10.100                    | \$10.100           | 100%        | \$10.100           | 100%       | \$10.100                            | 100%       |
| PROPOSITION C 25%             | \$13.000           | \$88.000                      | \$88.000                    | \$83.587           | 95%         | \$31.074           | 35%        | \$2.125                             | 2%         |
| FURTHER COST/REVENUE RECOVERY | \$0.000            | \$3.700                       | \$0.000                     | \$3.700            | 100%        | \$0.000            | 0%         | \$0.000                             | 0%         |
| <b>SUB TOTAL FUNDS</b>        | <b>\$1,060.100</b> | <b>\$1,138.800</b>            | <b>\$1,135.100</b>          | <b>\$1,134.387</b> | <b>100%</b> | <b>\$1,078.174</b> | <b>95%</b> | <b>\$948.708</b>                    | <b>83%</b> |
| CITY OF LA **                 | \$2.600            | \$2.600                       | \$0.000                     | \$1.466            |             | \$1.466            |            | \$0.000                             |            |
| <b>TOTAL FUNDS</b>            | <b>\$1,062.700</b> | <b>\$1,141.400</b>            | <b>\$1,135.100</b>          | <b>\$1,135.853</b> |             | <b>\$1,079.640</b> |            | <b>\$948.708</b>                    |            |

NOTE: EXPENDITURES ARE CUMULATIVE THROUGH NOVEMBER 2014  
 TOTAL FUNDS ANTICIPATED BASED ON JUNE 2013 PROJECT COST AND FUNDING PLAN AND JULY 2013 BOARD REPORT.  
 \* BILLING AMOUNT IS LESS THAN EXPENDITURES AMOUNT DUE TO SYSTEM LAG IN SUBMITTING INVOICES TO CALTRANS.  
 \*\* CONSTRUCTION OF CITY OF LA REVERSIBLE LANES PROJECT.

### STATUS OF FUNDS ANTICIPATED

**FEDERAL SAFETEA-LU:** \$117M is available for drawdown for specific phases of the Project as agreed upon in the Cooperative Agreement between Caltrans and Metro.

**FEDERAL ARRA:** \$189.9M is available for drawdown for specific phases of the Project as agreed upon in the Cooperative Agreement between Caltrans and Metro with consultation with FHWA.

**STATE CMIA:** State Proposition 1B Bond sales provided \$254.7M to the project. Funds are available for drawdown. The remaining balance of \$359.3M has been allocated and are available for drawdown. In December 2012, the California Transportation Commission and Metro Board approved the reprogramming of \$26.1M in CMIA funding to the I-405 Project. Funds are available for drawdown.

**STATE TCRP:** \$42M is available for drawdown for specific phases of the Project as agreed upon in the Cooperative Agreement between Caltrans and Metro. The remaining balance of \$48M has been made available by the CTC and is available for drawdown.

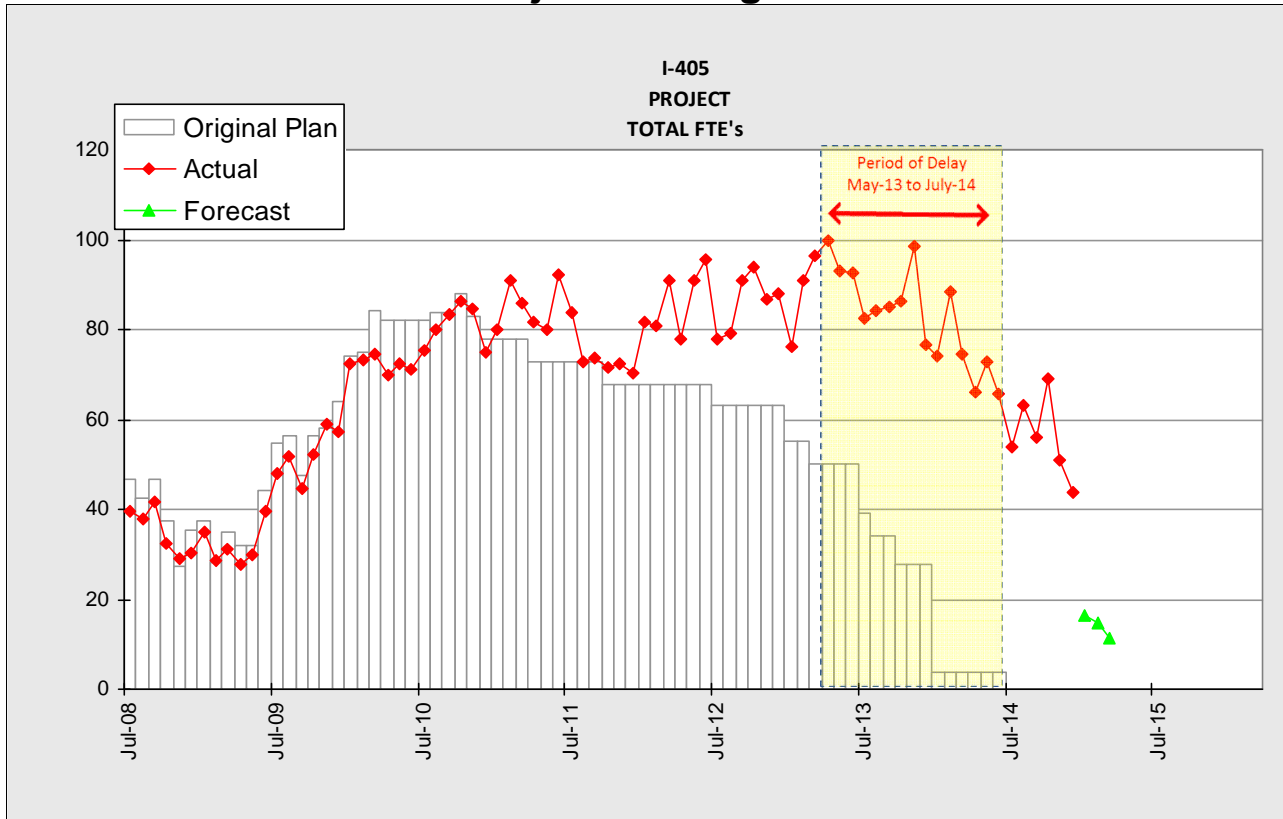
**STATE RSTP:** \$10.1M is available for drawdown for specific phases of the Project as agreed upon in the Cooperative Agreement between Caltrans and Metro.

**PROPOSITION C 25%:** The Metro Board initially approved the allocation of \$13M to the Project. In June 2013, the Metro Board approved an additional allocation of \$75M.

**CALTRANS:** Metro Board authorized staff in July 2012 to execute a Memorandum of Understanding between Caltrans Maintenance and Metro for a total amount of \$8M for the cleaning and the reconstruction of Caltrans drainage. In March 2013, Caltrans informed Metro that the work and funding have been cancelled.

# STAFFING STATUS

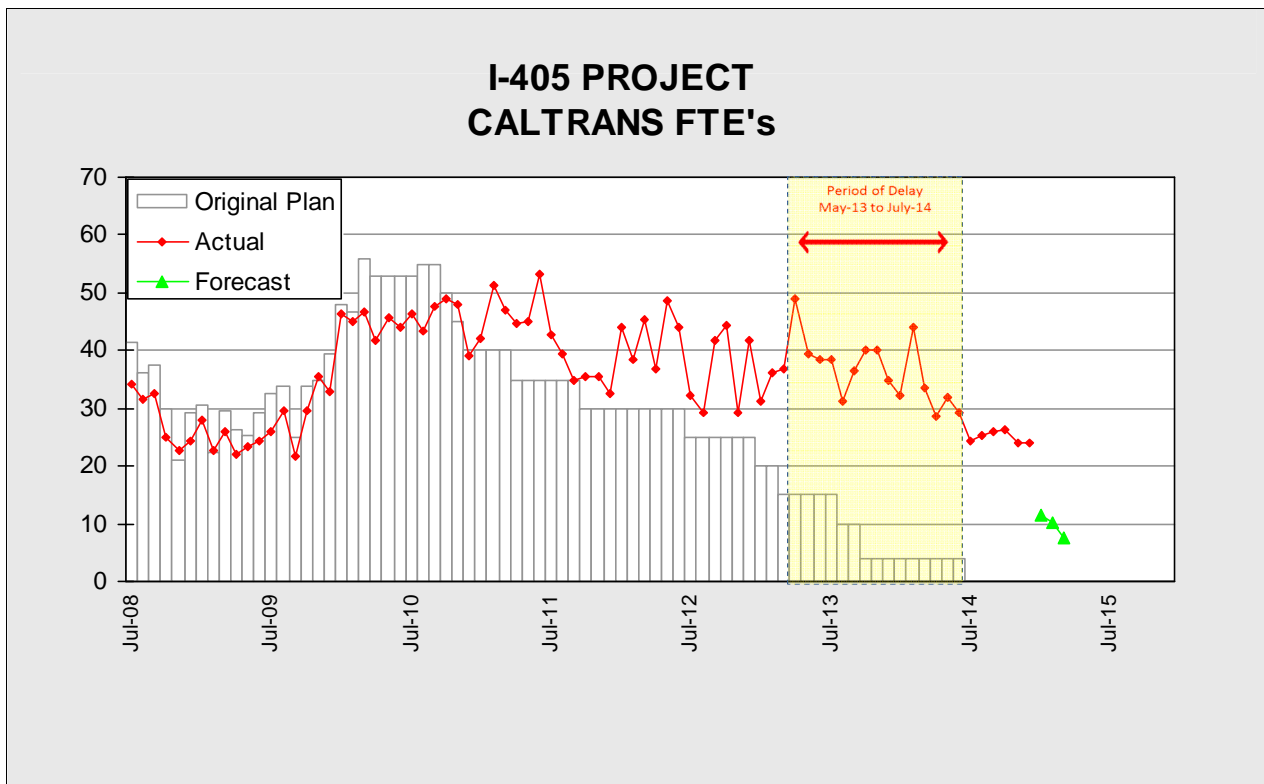
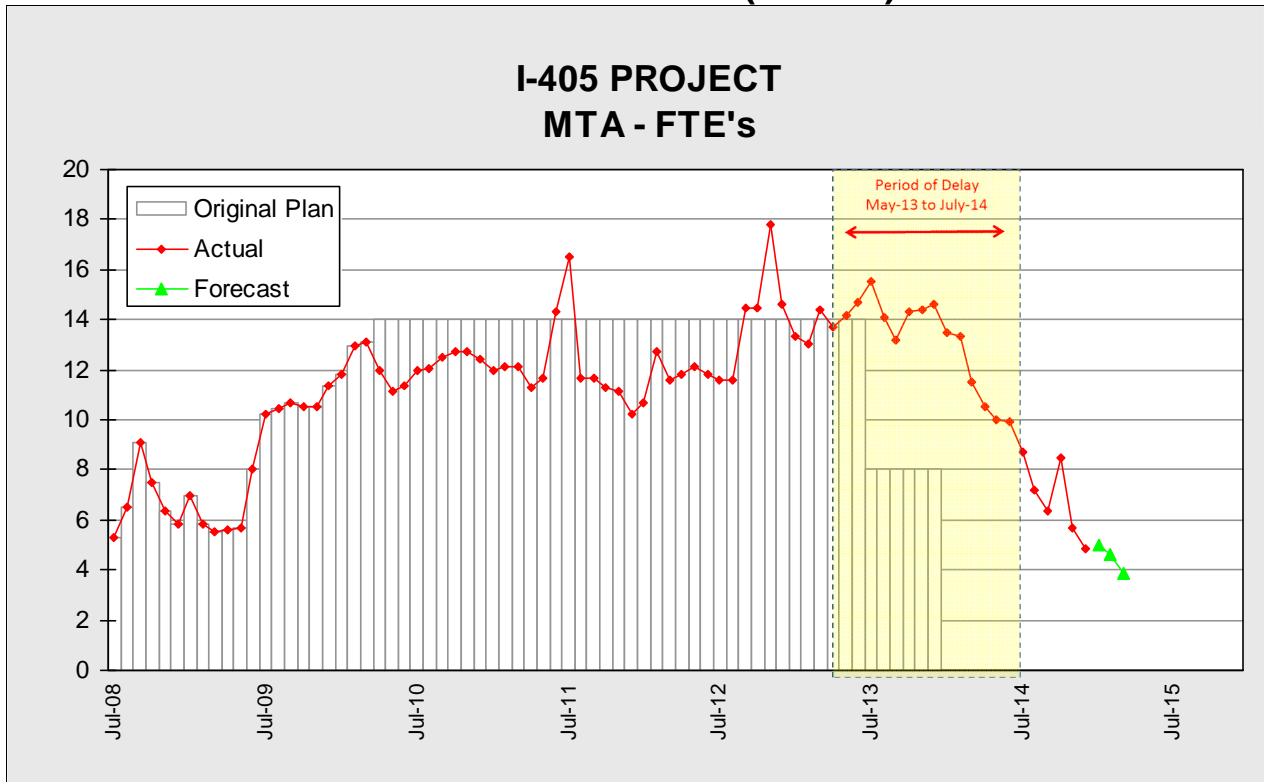
## Total Project Staffing - FTEs



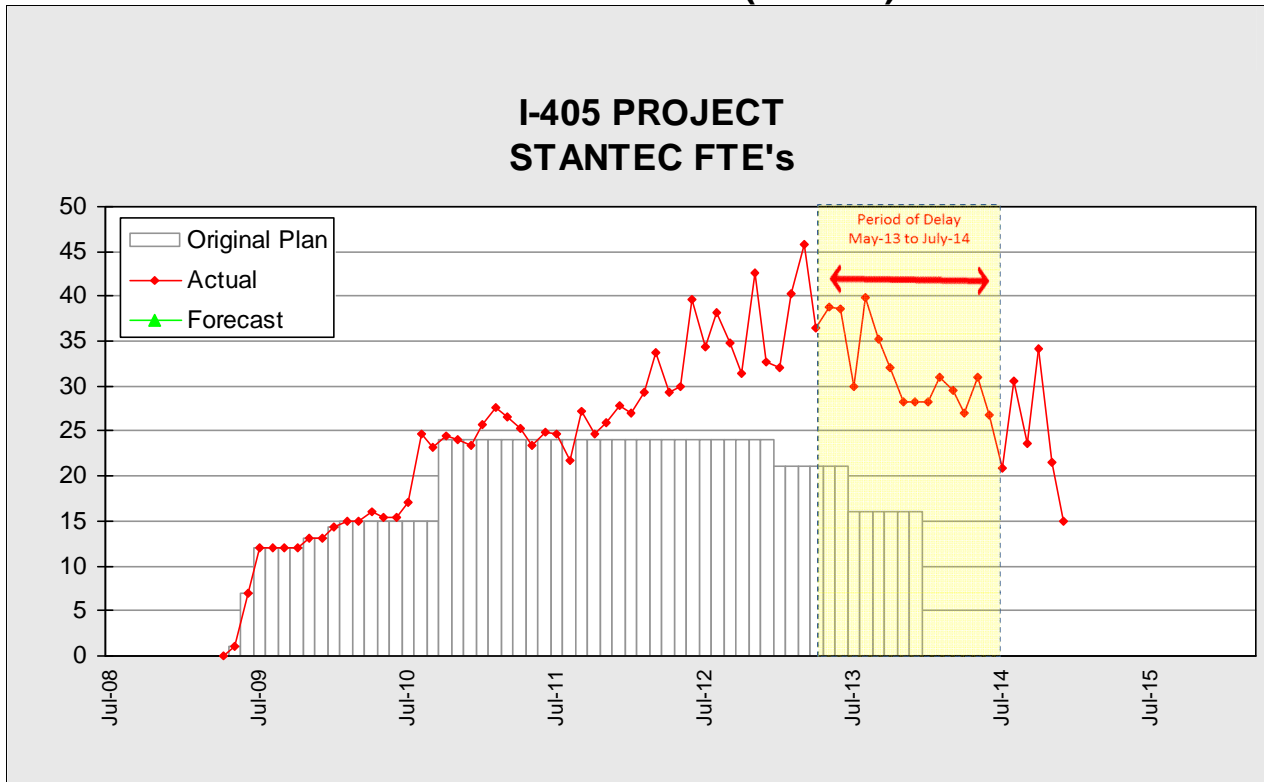
## Total Project Staffing

Due to the project delay, project staffing has been reforecasted through the end of project as shown in the staffing status charts.

### STAFFING STATUS (Cont'd)



### STAFFING STATUS (Cont'd)



## REAL ESTATE STATUS

The Real Estate acquisition process is proceeding and the Project is working on obtaining and releasing the parcels to the Contractor.

- Parcel 79612 (MWD) – Right-of-Entry (ROE) is in place for the SB Skirball Ramps and all works inside the MWD property. Annual renewal is required. Caltrans is in the process of finalizing and acquiring the Permanent ROW requirements.
- ROW at the Getty – ROE has been provided. Caltrans is in the process of acquiring the rights pending a meeting with the Getty.
- Parcel 79619 (LACMTA) – Construction has been completed. Caltrans HQ is currently reviewing the deeds.
- A permanent take is required at the Leo Baeck Temple for the signal foundation at Getty Center Drive and Sepulveda. The work has been completed under a temporary easement. Caltrans is in process of acquiring the permanent rights. Leo Baeck and City of LA have not come to an agreement on the language of the deeds.
- Parcel 79559 (GSA) – A temporary construction easement was acquired to do the work at the GSA. Currently the GSA is reviewing the final deeds for final conveyance of the property.

## ENVIRONMENTAL STATUS

- Draft Cooperative Agreement between Caltrans and Santa Monica Mountains Recreation and Conservation Authority to transfer mitigation funds associated with impacts at Getty Villa Trailhead is under review by Caltrans Headquarters.
- Ongoing coordination with Caltrans Design and Kiewit to track and document the completion of the project environmental commitments (avoidance, minimization, and mitigation measures, permits, formal agreements et. al) through the Environmental Commitments Record Implementation Program .
- Ongoing coordination with Caltrans Design and Kiewit to track and document the completion of the project environmental commitments (avoidance, minimization, and mitigation measures, permits, formal agreements et. al) through the Environmental Commitments Record Implementation Program .
- Ongoing coordination with the Resource Conservation District of the Santa Monica Mountains regarding California Department of Fish and Wildlife and Regional Water Quality Control Board permit amendment requirement of .75 acres of riparian mitigation.



## COMMUNITY RELATIONS STATUS

- Distributed construction notices for the following construction activities: Removal and replacement of the ADA ramp and sidewalk on Wilshire Blvd., removal and replacement of the ADA ramps on Sepulveda Blvd., installation of an overhead sign at Church Lane and Ovada Place, work on ADA ramps at Mulholland Drive and Skirball Center Drive, removal and replacement of the roadway on Sutton Street cul-de-sac and installation of wire mesh and drilling soil nails into the slope behind retaining Wall 2011 at Valley Vista on-ramp.
- Coordinated the following work activities: Three work activities in Segment 1 with the Veterans Administration and L.A. National Cemetery, requested a power shut down to install an overhead sign on Sepulveda Blvd., clean-up efforts on a slope adjacent to a residents home on Woodcrest Drive and Royal Ridge Road, noise complaint in Westwood Hills, reimbursement to a resident on Thurston Circle for damaged concrete wall, parking changes on southbound Sepulveda Blvd. in Sherman Oaks, lighting installation and landscaping on Sutton Street, traffic mitigation requests for Bel Air Presbyterian Church and UCLA Basketball Games, coordinated with the Getty Center regarding irrigation and landscaping, coordinated with Caltrans, LADOT, the Bureau of Street Lighting and Bel Air Beverly Crest Neighborhood Council regarding mudslides along Sepulveda and coordinated with residents of Sunset cul-de-sac regarding replacement of landscaping washed away due to heavy rains.

## QUALITY ASSURANCE STATUS

- Metro Quality participated in:
  - Bi-weekly Quality Team Meetings.
  - Weekly Construction Progress Meetings.
- Daily operation and formal walks to identify and resolve punch list items. Nearly 40% of the job walks and 60% of the punch list items have been completed.
- Kiewit issued five Nonconformance Reports during the month.
- Kiewit conducted an external audit of the Project for their ISO 9001:2008 certification.

## SAFETY AND SECURITY STATUS

- There were no injuries on the Project during December 2014.
- Safety Staff participated in scheduled pre-activity (readiness review) meetings to ensure compliance with approved Work Plans and contract specifications.
- Construction activities are monitored during day and night shifts to ensure contractor compliance with contract specifications. Reduction in night shift coverage has continued as work scope is reduced to mainly punch list work.
- Safety staff attended weekly Progress Meeting and other project meetings to evaluate Contractors Safety Program compliance with contract requirements.
- December Contractor Work Hours (Design & Construction): 44,633
- Contractor – Project to Date Work Hours (Design & Construction through 12/31/2014): 8,761,454
- Total Project to Date Work Hours (Contractor & the IPO Staff through 12/31/2014): 9,579,266
- Project to Date Recordable Injury Rate: 0.7 (Thirty-four Recordable Injuries) (each rate is per 200,000 work hours).
- Project to Date Total Time Away Injury Rate: 0.3 (Fifteen Time Away From Work Injuries).
- Project to Date Total Days Away Rate: 28.3 (1,356 Days Away From Work)
- Metro Construction Safety is providing Safety and Security Contract Compliance oversight during both day and night shifts. During weather events when work is suspended, compliance visits are focused on security issues.

**THIRD PARTY AGREEMENT STATUS**

| Third Party  | Type of Agreement  | Forecast Execution Date | Required Need Date | Status/<br>Comments  |
|--|--------------------|-------------------------|--------------------|--|
| City of Los Angeles  | MCA                | Cancelled               | Cancelled          | A stand-alone Master Cooperative Agreement (MCA) between the City of Los Angeles and LACMTA is no longer being pursued because the I-405 will soon be completed and County Counsel advised an MCA is not required.   |
| Los Angeles County Department of Public Works/Los Angeles Flood Control District | MCA                | Cancelled               | Cancelled          | On advice of County Counsel, LACMTA is not required to enter into a Master Cooperative Agreement with the Los Angeles County Department of Public Works/Los Angeles Flood Control District since the I-405 Project is a State Project, not a LACMTA Project. |
| Utility Owners   | Utility Agreements | Various                 | Various            | Caltrans style Utility Agreements (similar to MTA Work Order Authorizations) will be completed as relocation plans are approved for each location.   |

**CONTRACT STATUS**

|   |   |                      |                   |                     |                                 |                       |                               |     |                                |      |                            |      |                           |          |                            |       |                               |       |   |  |  |  |  |                 |         |                            |         |                            |        |  |         |                   |         |                           |       |
|---|---|----------------------|-------------------|---------------------|---------------------------------|-----------------------|-------------------------------|-----|--------------------------------|------|----------------------------|------|---------------------------|----------|----------------------------|-------|-------------------------------|-------|---|--|--|--|--|-----------------|---------|----------------------------|---------|----------------------------|--------|--|---------|-------------------|---------|---------------------------|-------|
| <p><b>I-405 Sepulveda Pass Improvements Project</b><br/> <b>Design/Build Contractor: Kiewit</b></p>   | <p><b>Contract No.: C0882</b><br/> <b>Status as of: January 2, 2015</b></p>   |                      |                   |                     |                                 |                       |                               |     |                                |      |                            |      |                           |          |                            |       |                               |       |   |  |  |  |  |                 |         |                            |         |                            |        |  |         |                   |         |                           |       |
| <p><b>Progress/Work Completed:</b><br/> Major work started/completed this period:<br/> - Raising existing utility appurtenances to grade.<br/> - Landscaping punchlist work continues.<br/> - Project Wide fence installation continues.<br/> - ADA ramp installation continues.<br/> - Maintenance during construction - SWPPP cleanout and repairs, graffiti removal from k-rails, trash and debris removal.</p> <p><b>Areas of Concern:</b><br/> - Completion and approval of Project Fact Sheets.<br/> - Utility encroachment exception approval by Caltrans.<br/> - Environmental commitment records approval by Caltrans.<br/> - Getty CMS.</p> | <p><b>Major Activities (In Progress):</b><br/> - Permanent lighting installation.<br/> - Permanent traffic signals installation.<br/> - Irrigation and landscaping.<br/> - <b>ADA ramp construction.</b><br/> - Project job walks.<br/> - Maintenance during construction.</p> <p><b>Major Activities Next Period:</b><br/> - Project job walks.<br/> - Project wide punchlist activities continue.</p> |                      |                   |                     |                                 |                       |                               |     |                                |      |                            |      |                           |          |                            |       |                               |       |   |  |  |  |  |                 |         |                            |         |                            |        |  |         |                   |         |                           |       |
|   |   | Original<br>Baseline | Time<br>Extension | Current<br>Contract | Forecast<br>Completion          | Variance<br>Cur-Fcast |                               |     |                                |      |                            |      |                           |          |                            |       |                               |       |   |  |  |  |  |                 |         |                            |         |                            |        |  |         |                   |         |                           |       |
|   | Commencement  | 08/31/09             | 0                 | 08/31/09            | 08/31/09                        | 0                     |                               |     |                                |      |                            |      |                           |          |                            |       |                               |       |   |  |  |  |  |                 |         |                            |         |                            |        |  |         |                   |         |                           |       |
|   | Completion  | 05/31/13             | 149               | 10/27/13            | 01/31/15                        | -461                  |                               |     |                                |      |                            |      |                           |          |                            |       |                               |       |   |  |  |  |  |                 |         |                            |         |                            |        |  |         |                   |         |                           |       |
|   | Punchlist Complete  | 08/29/13             | 149               | 01/25/14            | 05/01/15                        | -461                  |                               |     |                                |      |                            |      |                           |          |                            |       |                               |       |   |  |  |  |  |                 |         |                            |         |                            |        |  |         |                   |         |                           |       |
|   | Final Acceptance  | 11/27/13             | 149               | 04/25/14            | 07/30/15                        | -461                  |                               |     |                                |      |                            |      |                           |          |                            |       |                               |       |   |  |  |  |  |                 |         |                            |         |                            |        |  |         |                   |         |                           |       |
|   |   |                      |                   |                     |                                 |                       |                               |     |                                |      |                            |      |                           |          |                            |       |                               |       |   |  |  |  |  |                 |         |                            |         |                            |        |  |         |                   |         |                           |       |
| <p><b>Schedule Summary:</b></p> <table border="0"> <tr><td>Notice of Award</td><td>04/29/09</td></tr> <tr><td>Notice to Proceed</td><td>06/02/09</td></tr> <tr><td>Original Contract Duration (CD)</td><td>1640</td></tr> <tr><td>Approved Time Extensions (CD)</td><td>149</td></tr> <tr><td>Current Contract Duration (CD)</td><td>1789</td></tr> <tr><td>Forecast Contract Duration</td><td>2250</td></tr> <tr><td>Forecast Final Acceptance</td><td>07/30/15</td></tr> <tr><td>Elapsed Time from NTP (CD)</td><td>2,041</td></tr> <tr><td>Contract Elapsed Time Percent</td><td>90.7%</td></tr> </table>  | Notice of Award   | 04/29/09             | Notice to Proceed | 06/02/09            | Original Contract Duration (CD) | 1640                  | Approved Time Extensions (CD) | 149 | Current Contract Duration (CD) | 1789 | Forecast Contract Duration | 2250 | Forecast Final Acceptance | 07/30/15 | Elapsed Time from NTP (CD) | 2,041 | Contract Elapsed Time Percent | 90.7% | <p><b>Cost Summary:</b> <span style="float: right;"><b>\$ In 000's</b></span></p> <table border="0"> <tr><td>1. Award Value:</td><td style="text-align: right;">720,922</td></tr> <tr><td>2. Executed Modifications:</td><td style="text-align: right;">144,740</td></tr> <tr><td>3. Approved Change Orders:</td><td style="text-align: right;">44,476</td></tr> <tr><td>4. Current Contract Value (1 + 2 + 3):</td><td style="text-align: right;">910,138</td></tr> <tr><td>5. Incurred Cost:</td><td style="text-align: right;">867,197</td></tr> <tr><td>6. Percent Incurred Cost:</td><td style="text-align: right;">95.3%</td></tr> </table> |  |  |  |  | 1. Award Value: | 720,922 | 2. Executed Modifications: | 144,740 | 3. Approved Change Orders: | 44,476 | 4. Current Contract Value (1 + 2 + 3): | 910,138 | 5. Incurred Cost: | 867,197 | 6. Percent Incurred Cost: | 95.3% |
| Notice of Award   | 04/29/09  |                      |                   |                     |                                 |                       |                               |     |                                |      |                            |      |                           |          |                            |       |                               |       |   |  |  |  |  |                 |         |                            |         |                            |        |  |         |                   |         |                           |       |
| Notice to Proceed   | 06/02/09  |                      |                   |                     |                                 |                       |                               |     |                                |      |                            |      |                           |          |                            |       |                               |       |   |  |  |  |  |                 |         |                            |         |                            |        |  |         |                   |         |                           |       |
| Original Contract Duration (CD)   | 1640  |                      |                   |                     |                                 |                       |                               |     |                                |      |                            |      |                           |          |                            |       |                               |       |   |  |  |  |  |                 |         |                            |         |                            |        |  |         |                   |         |                           |       |
| Approved Time Extensions (CD)   | 149   |                      |                   |                     |                                 |                       |                               |     |                                |      |                            |      |                           |          |                            |       |                               |       |   |  |  |  |  |                 |         |                            |         |                            |        |  |         |                   |         |                           |       |
| Current Contract Duration (CD)  | 1789  |                      |                   |                     |                                 |                       |                               |     |                                |      |                            |      |                           |          |                            |       |                               |       |   |  |  |  |  |                 |         |                            |         |                            |        |  |         |                   |         |                           |       |
| Forecast Contract Duration  | 2250  |                      |                   |                     |                                 |                       |                               |     |                                |      |                            |      |                           |          |                            |       |                               |       |   |  |  |  |  |                 |         |                            |         |                            |        |  |         |                   |         |                           |       |
| Forecast Final Acceptance   | 07/30/15  |                      |                   |                     |                                 |                       |                               |     |                                |      |                            |      |                           |          |                            |       |                               |       |   |  |  |  |  |                 |         |                            |         |                            |        |  |         |                   |         |                           |       |
| Elapsed Time from NTP (CD)  | 2,041   |                      |                   |                     |                                 |                       |                               |     |                                |      |                            |      |                           |          |                            |       |                               |       |   |  |  |  |  |                 |         |                            |         |                            |        |  |         |                   |         |                           |       |
| Contract Elapsed Time Percent   | 90.7%   |                      |                   |                     |                                 |                       |                               |     |                                |      |                            |      |                           |          |                            |       |                               |       |   |  |  |  |  |                 |         |                            |         |                            |        |  |         |                   |         |                           |       |
| 1. Award Value:   | 720,922   |                      |                   |                     |                                 |                       |                               |     |                                |      |                            |      |                           |          |                            |       |                               |       |   |  |  |  |  |                 |         |                            |         |                            |        |  |         |                   |         |                           |       |
| 2. Executed Modifications:  | 144,740   |                      |                   |                     |                                 |                       |                               |     |                                |      |                            |      |                           |          |                            |       |                               |       |   |  |  |  |  |                 |         |                            |         |                            |        |  |         |                   |         |                           |       |
| 3. Approved Change Orders:  | 44,476  |                      |                   |                     |                                 |                       |                               |     |                                |      |                            |      |                           |          |                            |       |                               |       |   |  |  |  |  |                 |         |                            |         |                            |        |  |         |                   |         |                           |       |
| 4. Current Contract Value (1 + 2 + 3):  | 910,138   |                      |                   |                     |                                 |                       |                               |     |                                |      |                            |      |                           |          |                            |       |                               |       |   |  |  |  |  |                 |         |                            |         |                            |        |  |         |                   |         |                           |       |
| 5. Incurred Cost:   | 867,197   |                      |                   |                     |                                 |                       |                               |     |                                |      |                            |      |                           |          |                            |       |                               |       |   |  |  |  |  |                 |         |                            |         |                            |        |  |         |                   |         |                           |       |
| 6. Percent Incurred Cost:   | 95.3%   |                      |                   |                     |                                 |                       |                               |     |                                |      |                            |      |                           |          |                            |       |                               |       |   |  |  |  |  |                 |         |                            |         |                            |        |  |         |                   |         |                           |       |

## CHRONOLOGY OF EVENTS

|                                     |  |
|-------------------------------------|--|
| May 18, 2007                        | The Draft Environmental Impact Report (EIR)/Environmental Impact Statement (EIS) is issued.  |
| May 22, 2007 to<br>October 1, 2007  | Public review of draft EIS.  |
| February 29, 2008                   | The Final Environmental Impact Report (EIR)/Environmental Impact Statement (EIS) is issued.  |
| March 10, 2008                      | The Final Environmental Impact Report (EIR)/Environmental Impact Statement (EIS) errata with U. S. General Services Administration (GSA) comments is issued.     |
| March 14, 2008 to<br>April 14, 2008 | Public review of Final EIS.  |
| April 25, 2008                      | Record of Decision (ROD) approved.   |
| October 10, 2008                    | LACMTA issued Invitation For Bid (IFB) for the project.  |
| February 20, 2009                   | Project bids opened.   |
| April 23, 2009                      | LACMTA Board authorized the Chief Executive Officer to award Design-Build Contract C0882 to Kiewit Pacific Co.   |
| April 23, 2009                      | LACMTA Board approved establishing a budget of \$1.034 billion for project 405523.   |
| April 23, 2009                      | LACMTA awarded Contract C0882 to Kiewit Pacific in the amount \$694,156,000 to include Schedules A, C, and H (Option 4).   |
| April 29, 2009                      | LACMTA issued a revised NOA to Kiewit Pacific in the amount \$720,922,000 to include Schedules A, C, E (Option 1), F (Option 2), G (Option 3), and H (Option 4). |
| June 2, 2009                        | LACMTA issued Notice to Proceed to Kiewit Pacific for the Design-Build Contract C0882.   |
| August 31, 2009                     | Contract Commencement Date.  |
| September 24, 2009                  | Kiewit Pacific submitted the Project Baseline Schedule.  |
| October 14, 2009                    | Project Design Quality Management Plan approved.   |

## CHRONOLOGY OF EVENTS (Cont'd)

|                    |   |
|--------------------|---|
| December 14, 2009  | Project Quality Management System approved.   |
| January 20, 2010   | Project Baseline Schedule was approved.   |
| January 27, 2010   | Roadway Restriping commenced.   |
| March 12, 2010     | Major Project Permits were obtained; Permit 401 – Water Quality Control Board, Permit 404 – U.S. Army Corps of Engineers, and Permit 1600 – California Department of Fish & Game. |
| May 31, 2010       | The Project completed one year without a Recordable Injury.   |
| July 23, 2010      | Sunset Bridge major demolition of the south side top deck and center column.  |
| August 2, 2010     | Commenced construction on Bridge 4a/b.  |
| August 16, 2010    | Commenced ExxonMobil 16" utility relocation at Bridge 16.   |
| August 20, 2010    | Operating Engineers Local 12 initiate labor action by striking.   |
| August 24, 2010    | Completed ductbank work on Sepulveda for DWP utility undergrounding.  |
| August 24, 2010    | Commenced construction of Walls 1720/1730.  |
| August 24, 2010    | ITS Backbone is cut.  |
| September 7, 2010  | DWP started pulling wires for utility undergrounding on Sepulveda.  |
| September 9, 2010  | Operating Engineers Local 12 Labor action is settled and strike ends.   |
| September 13, 2010 | Completed the excavation of Roadway at 1685/1691.   |
| September 15, 2010 | Completed the removal of Wall 1665.   |
| September 18, 2010 | Completed installation of Temporary walkway at Skirball Bridge.   |
| September 28, 2010 | Pioneer access to Sunset on-ramp, Bridge 15 Abutment 1.   |

### CHRONOLOGY OF EVENTS (Cont'd)

|                   |   |
|-------------------|---|
| October 12, 2010  | Began excavation of Sunset Bridge 16 Abutment 1 Footing.                    |
| October 12, 2010  | Began demolition of Skirball Bridge 21.                                     |
| October 15, 2010  | Completed demolition Skirball Bridge 21.                                    |
| October 15, 2010  | Began driving piles at Santa Monica Bridge 4.                               |
| October 15, 2010  | Installed Beams at Sunset Bridge 16, Bent #2.                               |
| October 15, 2010  | Began driving piles on Santa Monica Bridge 4.                               |
| October 19, 2010  | Completed demolition of Sunset Bridge 16, Abutment 4.                       |
| October 21, 2010  | Installed beams at Sunset Bridge 15 On Ramp, Abutment 1.                    |
| October 22, 2010  | Began Demolition of Sunset Bridge 16, Abutment 1.                           |
| October 22, 2010  | Installed Piles at Wall 1720.   |
| October 25, 2010  | Began Excavation at Walls 1685/1691.  |
| October 28, 2010  | Began the relocation of overhead power lines at Ohio Ave Bridge 5.          |
| October 28, 2010  | Clear and grub area at Wall 1746.   |
| November 12, 2010 | Completed demolition of soundwall, barrier rail, and overhang at Bridge 13. |
| November 15, 2010 | Completed installation of SOE at Abutment 1 NB at Bridge 4 Santa Monica.    |
| November 15, 2010 | Completed demolition of existing ExxonMobil 16" Oil Pipeline.               |
| November 17, 2010 | Completed excavation of CIP at Wall 1640.                                   |
| November 18, 2010 | Began excavation at Wall 1635.  |
| November 29, 2010 | Began Excavation at Bridge 13.  |
| November 30, 2010 | Began relocation of SCE underground vault.                                  |

### CHRONOLOGY OF EVENTS (Cont'd)

|                   |   |
|-------------------|---|
| December 7, 2010  | Began driving piles at Bridge 13 - Montana Avenue UC.   |
| December 14, 2010 | Completed Pile driving at Abutment 1 Bridge 16 Sunset OC.   |
| December 15, 2010 | Completed the installation of new power poles and raised the utility wires at Bridge 5 - Ohio Avenue. |
| December 16, 2010 | Completed piles at abutments 1 and 2 for Bridge 13 Montana Ave UC.                                    |
| December 17, 2010 | Began installation of SOE beams at Bridge 15 Sunset on-ramp.  |
| January 3, 2011   | Began Construction of Piers and Columns at Bridge 16.   |
| January 11, 2011  | Began Construction Activities at Bridge 5.  |
| January 13, 2011  | Began Construction Activities at Bridge 12.   |
| January 17, 2011  | Began Installation of Footings and Pile Caps at Bridge 16.  |
| February 1, 2011  | Began Construction Activities at Bridge 21 – Skirball Center Drive.                                   |
| February 14, 2011 | Began Field Work relocating Storm Drain at Veterans Administration (VA).                              |
| February 21, 2011 | Began Field Work relocating Chevron Oil Pipeline at Bridge 23 – Sepulveda UC.                         |
| February 23, 2011 | Began Construction Activities at Bridge 15 – Sunset On-Ramp.  |
| February 25, 2011 | Completed Drilling and Placing Beams at NB Abutments 1 & 2 at Bridge 12 – Constitution UC.            |
| February 28, 2011 | Completed Pouring Columns at Bent 3, Bridge 16 – Sunset OC.   |
| March 2, 2011     | Began Field Work relocating LADWP 4" Waterline at Valley Vista.                                       |
| March 2, 2011     | Completed Driving 14" Square Piles at Bridge 3 Abutment 1.  |
| March 15, 2011    | Began Field Work relocating So Cal Gas Line at Wall 1746.   |



### CHRONOLOGY OF EVENTS (Cont'd)

|                |  |
|----------------|--|
| March 18, 2011 | Completed Setting Soldier Beams at Bridge 15 Bent 2 & 3 Mainline.                    |
| March 23, 2011 | Began Field Work Encasing Sewer Lines 401-403 at Walls 1720, 1730 and 1746.          |
| March 31, 2011 | Completed Setting and Backfilling Wall Panels at Wall 1942B.                         |
| April 4, 2011  | Began Installation of Bent 2 & Bent 3 Columns at Bridge 21 Skirball Center Drive OC. |
| April 5, 2011  | Began Installation of Storm Drain at Walls 1720 and 1730.                            |
| April 10, 2011 | Completed Installation of Girders at Bridge 13 Montana Ave UC.                       |
| April 22, 2011 | Completed Bridge 9 Wilshire Blvd. UC demolition for widening.                        |
| April 25, 2011 | Began Work Relocating Shell Oil Line at Bridge 23 Sepulveda UC.                      |
| May 2, 2011    | Began Relocation of Area 2 Sewer Lines # 201-203.                                    |
| May 6, 2011    | Completed Setting Girders at Southside of Bridge 16 Sunset OC.                       |
| May 11, 2011   | Began Construction Work on Bridge 3 Olympic Blvd.                                    |
| May 25, 2011   | Completed Tie Back Installation at Walls 1720 and 1730.                              |
| June 3, 2011   | Completed Girder Installation on the North Side of Bridge 21 Skirball OC.            |
| June 13, 2011  | Began Installation of Precast Deck Panels on Bridge 16 Sunset OC.                    |
| June 24, 2011  | Began Demolition of Existing Walls 1720 and 1730 along Sepulveda Blvd.               |
| June 30, 2011  | Completed Installation of Precast Deck Panels on Bridge 16 Sunset OC.                |

### CHRONOLOGY OF EVENTS (Cont'd)

|                    |   |
|--------------------|---|
| July 6, 2011       | Began Relocation of LADWP Overhead Power Lines at Mulholland Bridge.                                  |
| July 13, 2011      | Completed installation of Void Slab Deck at Bridge 12 Constitution UC.                                |
| July 14, 2011      | Completed Pouring Diaphragms 1, 2, and 3 at Bridge 21 Skirball OC.                                    |
| July 16, 2011      | Began Demolition of South Side of Bridge 22 Mulholland OC.  |
| July 17, 2011      | Completed Demolition of South Side of Bridge 22 Mulholland OC.  |
| July 20, 2011      | Completed Installation of Pre-cast Girders at Bridge 4SB Santa Monica UC.                             |
| July 26, 2011      | Began Driving Piling at Bridge 8 NB from EB Wilshire, Bent 8.   |
| August 1, 2011     | Began installation of forms and rebar for Top Deck at Bridge 21, Skirball Center Drive.               |
| August 3, 2011     | Began work on the Interchange Ramp from Westbound I-10 to Northbound I-405.                           |
| August 6, 2011     | Began work installing Top Deck at Bridge 4 Santa Monica Blvd.   |
| August 24, 2011    | Completed pouring the Top Deck at Bridge 13, Montana Ave.   |
| August 26, 2011    | Completed installation of Footing & Pile Cap/Abutment-Wingwalls/Bridge Bearing Bridge 3 Olympic Blvd. |
| August 31, 2011    | Completed pouring the Top Deck at South Side of Bridge 16, Sunset Blvd.                               |
| September 15, 2011 | Completed installation of Top Deck and Diaphragm on Bridge 16, Sunset Blvd.                           |
| September 16, 2011 | Completed pouring the Top Deck at Bridge 21, Skirball Center Drive.                                   |
| September 23, 2011 | Began construction of LADWP Power Utilities undergrounding ductbank between Stations 1740 and 1760.   |

## CHRONOLOGY OF EVENTS (Cont'd)

|                    |  |
|--------------------|--|
| September 27, 2011 | Completed pouring curb and gutter on west side of Bridge 16, Sunset Blvd.  |
| September 29, 2011 | Completed pouring Lateral Retaining Walls #6, #7, and #8 at Retaining Wall 1720.   |
| October 14, 2011   | Completed pouring footing for Bent 2 at Bridge 22, Mulholland Drive.   |
| October 17, 2011   | Began installation of Bent 2 Forms at Bridge 22, Mulholland Drive.   |
| October 18, 2011   | Began construction activities at Bridge 18, Bel Air Crest.   |
| October 22, 2011   | New Bridge 16, Sunset Blvd. South Side opened to vehicle traffic.  |
| October 27, 2011   | Completed pouring Abutment 1 at Bridge 22, Mulholland Drive.   |
| November 1, 2011   | Began demolition of Bridge 16 Sunset Blvd. north side.   |
| November 7, 2011   | Began installation of CIDH Piles for I-10 Connector.   |
| November 9, 2011   | Completed demolition of Bridge 16 Sunset Blvd. north side.   |
| November 22, 2011  | Received the VA License to Enter agreement.  |
| November 22, 2011  | Completed pouring Bridge 22 Mulholland OC Bent 2 Columns.  |
| November 22, 2011  | Completed pouring Bridge 5 Ohio NB Abutments 1 & 2.  |
| December 1, 2011   | MSE Wall 1897 along NB Sepulveda Blvd. south of Skirball Center Drive ruptures. Kiewit stops work on all MSE Walls throughout the project and begins investigation into MSE Wall deficiencies. |
| December 1, 2011   | Began 2 <sup>nd</sup> pouring of Bridge 22 Mulholland Abutment 1.  |
| December 8, 2011   | Completed subgrade for NM Connector.   |
| December 17, 2011  | Began installation of Precast Girders at Bridge 5A Ohio Ave.   |
| December 19, 2011  | Began installation of falsework beams for Bridge 15 Sunset on-ramp.  |

## CHRONOLOGY OF EVENTS (Cont'd)

|                   |   |
|-------------------|---|
| December 19, 2011 | Began driving piles for Bridge 16 Sunset Blvd. Bent 3.  |
| January 4, 2012   | Began De-construction of MSE Wall 1738A.  |
| January 9, 2012   | Began De-construction of MSE Wall 1665.   |
| January 16, 2012  | Completed demolition of the I-405 median barrier at Mulholland Bridge and began erection of Falsework.  |
| January 19, 2012  | Began pouring footings for Soundwalls at Retaining Walls 1720 and 1730.   |
| January 20, 2012  | Completed pouring column # 1 @ Sunset Blvd. Bridge.   |
| January 25, 2012  | Began De-construction of MSE Wall 1634.   |
| January 27, 2012  | Kiewit stopped work on all Soil Nail Walls due to developing cracks, pending investigation.   |
| January 31, 2012  | Poured columns at Bel Air Crest Bridge.   |
| February 13, 2012 | Construction activities are started in Area 5 at Bridge 18 Getty Center UC and Bridge 19 Sepulveda UC.  |
| February 15, 2012 | De-construction of MSE Wall 1738A at Sunset NB Off-Ramp is completed.   |
| February 18, 2012 | Piers and Columns are poured for Bridge 16 Sunset Blvd.   |
| February 18, 2012 | LADWP completes installation of new underground cabling in ductbank along Sepulveda Blvd and Wilshire Ave. Final paving of Sepulveda trench is completed.   |
| February 28, 2012 | Kiewit submits notification to LACMTA that all remaining MSE Walls, with the exceptions of completed MSE Walls 1619 and 1942B will be de-constructed.   |
| March 2, 2012     | Full NB Freeway Closure at Mulholland Bridge to install Falsework Girders.  |
| March 6, 2012     | Caltrans identifies a potential Safety Concern during Mulholland Bridge Falsework Girder Installation on the SB Side and orders girders to be removed. Caltrans issues Stop Work Order pending review of Girder Installation Process. |

## CHRONOLOGY OF EVENTS (Cont'd)

|                |  |
|----------------|--|
| March 8, 2012  | Caltrans completes review of Girder Installation Process and authorizes resumption of installation of Falsework Girders at Mulholland Bridge. SB Side Falsework Girders are installed.     |
| March 22, 2012 | Concrete Girders are installed at Bridge 5B Ohio UC SB side.   |
| April 7, 2012  | Kiewit completes installation of Mulholland Bridge (South Side) Sheet Decking and begins installation of structural rebar.   |
| April 10, 2012 | Kiewit resumes construction of MSE Walls. Construction of Wall 1672 new leveling pad is started.   |
| April 14, 2012 | Kiewit begins installation of top deck and diaphragm structural rebar at Bridge 4 Santa Monica UC.   |
| April 20, 2012 | Kiewit pours concrete top deck, curb, and gutter at Bridge 9 Wilshire UC.  |
| May 1, 2012    | Begin installation of Concrete girders at Bridge 16 Sunset OC North Side.  |
| May 4, 2012    | Kiewit resumes construction of MSE Walls using an approved new Wall Panel Vendor and Construction Plan. Construction begins at MSE Wall 1672 along Sepulveda Blvd. north of Wilshire Blvd. |
| May 4, 2012    | Completion of installation of Concrete Girders at Bridge 16 Sunset OC North Side.  |
| May 18, 2012   | Construction of MSE Wall 1808 along Sepulveda Blvd. north of Getty Center Drive is started using new Wall Panels and Construction Plan.  |
| May 24, 2012   | Structural construction is started within the GSA Property. Construction of Bridge 7 Bent 3 is started.  |
| May 31, 2012   | Construction of MSE Wall 1686 along Sepulveda Blvd. north of Constitution Drive is started using new Wall Panels and Construction Plan.  |

## CHRONOLOGY OF EVENTS (Cont'd)

|                    |  |
|--------------------|--|
| June 2, 2012       | NW1 Ramp from WB I-10 to NB I-405 is opened for traffic.   |
| June 6, 2012       | GSA Microwave Security System is installed.  |
| June 7, 2012       | Bridge 7 NB I-405 to EB Wilshire Off-ramp Columns for Bents 3 and 4 are constructed on GSA Property. |
| June 22, 2012      | 90-Day Shutdown of Bridges 10 & 11 NB I-405 to WB Wilshire and WB Wilshire to NB I-405 commenced.    |
| June 27, 2012      | Demolition of existing Bridges 10 & 11 is completed.   |
| July 15, 2012      | Bridge 21 Skirball Center Drive, North side, is opened to traffic.                                   |
| July 20, 2012      | Bridge 22 Mulholland Drive, Top Deck is poured.  |
| July 21, 2012      | Bridges 10 & 11 Pre-cast Girders are installed.  |
| July 30, 2012      | Bridge 21 Skirball Center Drive, South Side, Demolition is started.                                  |
| August 3, 2012     | Bridge 21 Skirball Center Drive, South Side, Demolition is Completed.                                |
| August 10, 2012    | Bridges 10 & 11 Top Deck is Poured.  |
| August 23, 2012    | Bridge 16 Sunset Blvd. Top Deck is Poured.   |
| August 31, 2012    | Bridges 10 & 11 are Opened for Traffic.  |
| September 4, 2012  | Bridge 7 Falsework installation begins.  |
| September 24, 2012 | Bridge 16 is fully opened for traffic.   |
| September 24, 2012 | Bridge 22 South Side is opened for traffic.  |
| September 28, 2012 | Began demolition of the north side of Mulholland Bridge 22.  |
| September 30, 2012 | Complete demolition of the north side of Mulholland Bridge 22.                                       |
| October 1, 2012    | Began construction activities for Bridge 17, Church Lane UC.   |

## CHRONOLOGY OF EVENTS (Cont'd)

|                   |   |
|-------------------|---|
| October 1, 2012   | Began construction activities for Bridge 22, Mulholland OC north side.  |
| October 15, 2012  | MSE Wall 1897 reconstruction is completed.  |
| October 19, 2012  | Bridge 15 Sunset NB On-ramp, top deck is poured.  |
| October 23, 2012  | RW 1720 punch list work begins.   |
| November 4, 2012  | Re-aligned Sepulveda Blvd. to the east at Bronwood Apartments.  |
| November 6, 2012  | Begin construction activities for Bridge 14 Sunset NB Off-ramp.   |
| November 8, 2012  | Bridges 6A and 6B SB Off-ramp to EB Wilshire abutments poured.  |
| November 28, 2012 | Completed re-striping and realignment of Sepulveda Blvd. to the east at walls 1720 & 1730.                          |
| November 29, 2012 | Completed pouring Top Deck at Bridge 1 I-10 Connector.  |
| December 4, 2012  | Completed installation of Pre-Cast Girders at Bridge 2 Exposition.  |
| December 6, 2012  | Sepulveda Blvd. is restriped and realigned from Montana Avenue to Bridge 14 NB Sunset Off-Ramp.                     |
| December 20, 2012 | Completed pouring Top Deck at Bridge 18 Getty Center Drive NB and SB.   |
| December 21, 2012 | Completed girder installation at Bridge 6A and 6B SB Wilshire Off-Ramp.   |
| January 4, 2013   | False work for Bridge 7 is completed allowing construction of CIP Box Girder to progress from abutment to abutment. |
| January 4, 2013   | Completed installation of 10' diameter CIDH Piles for Bridge 14 Construction of foundation piles is started.        |
| January 15, 2013  | Completed pouring outside stems for Bridge 8.   |

## CHRONOLOGY OF EVENTS (Cont'd)

|                   |  |
|-------------------|--|
| January 23, 2013  | Completed installation of top deck metal decking for Bridge 6A.  |
| February 3, 2013  | Opened new SB 405 On-ramp from Skirball Center Drive.  |
| February 11, 2013 | Began installation of Falsework for Mulholland Bridge north side.  |
| February 21, 2013 | Opened new SB 405 On-ramp from EB Wilshire Blvd.   |
| February 22, 2013 | Opened new NB 405 On-ramp from Cotner Ave. at Olympic Blvd.  |
| March 8, 2013     | Began 14-day closure of SB I-405 to WB Wilshire Off-ramp to allow construction of new Off-ramp.              |
| March 16, 2013    | Completed construction of new SB I-405 to WB Wilshire Off-ramp and re-opened the Off-ramp 6 days early.      |
| March, 22, 2013   | Began forming bottom deck of north side of Bridge 22, Mulholland OC.   |
| March 25, 2013    | Opened new Bridge 1, I-10 EB to I-405 NB, and began demolition of existing Bridge 2 Span 4 to Abutment 9.    |
| April 6, 2013     | Completed paving on NB side of I-10 to I-405 Interchange Area.   |
| April 9, 2013     | Completed Bridge 22, Mulholland Dr. OC, Falsework installation.  |
| April 18, 2013    | Completed Bridge 7, NB 405 to EB Wilshire Off-ramp, Top Deck installation.                                   |
| May 3, 2013       | Completed NB I-405 paving activities in the Santa Monica Area.   |
| May 23, 2013      | Change Order 105.00 is issued extending the Substantial Completion Deadline by 149 days to October 27, 2013. |
| May 24, 2013      | General Purpose Lane opened in Segment 1 from the I-10 to the Santa Monica Area.                             |
| May 30, 2013      | Began removal of Falsework at Bridge 7 NB I-405 to EB Wilshire Off-ramp.                                     |



## CHRONOLOGY OF EVENTS (Cont'd)

|                 |   |
|-----------------|---|
| June 11, 2013   | Additional NB General Purpose Lane is opened to traffic from Santa Monica Blvd. to Wilshire Blvd. |
| June 20, 2013   | Completed work on Bridge 7, NB 405 to EB Wilshire Off-ramp.                                       |
| June 21, 2013   | Completed installation of girders on Bridge 21, Skirball Center Drive OC.                         |
| June 22, 2013   | Bridge 15, Sunset Blvd. to NB 405 On-ramp, opened to traffic.                                     |
| June 26, 2013   | Bridge 7, NB 405 to EB Wilshire Off-ramp, opened to traffic.                                      |
| June 29, 2013   | Bridge 22, Mulholland OC, completed pouring Top Deck.   |
| July 3, 2013    | Bridge 7, NB 405 to EB Wilshire Off-ramp, demolition of existing bridge is completed.             |
| July 18, 2013   | Bridge 22, Mulholland OC, Falsework removal is started.   |
| July 30, 2013   | Area 2, Santa Monica Area, Median paving is completed.  |
| August 2, 2013  | Bridge 14 Sunset NB Off-ramp, 120-Day Closure Window begins.                                      |
| August 4, 2013  | Bridge 14 Sunset NB Off-ramp, Demolition of existing bridge is completed.                         |
| August 15, 2013 | Bridge 17 Sepulveda UC, Top Deck concrete is poured.  |
| August 22, 2013 | Bridge 8 EB Wilshire to NB 405 On-ramp, 90-Day Closure Window begins.                             |
| August 22, 2013 | Bridge 8 EB Wilshire to NB 405 On-ramp, Demolition of existing bridge is completed.               |
| Sept. 12, 2013  | Bridge 14 Sunset Off-ramp, steel girder installation over Sepulveda Blvd. is started.             |
| Sept. 14, 2013  | SB I-405 to Valley Vista Off-ramp to EB Wilshire, new Off-ramp is opened to traffic.              |
| Sept. 23, 2013  | Bridge 6A and 6B SB I-405 Off-ramp to EB Wilshire, new Off-ramp is opened to traffic.             |

### **CHRONOLOGY OF EVENTS (Cont'd)**

|                   |  |
|-------------------|--|
| Sept. 24, 2013    | Bridge 14 Sunset Off-ramp, steel girder installation over Sepulveda Blvd. is completed.              |
| Sept. 30, 2013    | SB I-405 to Skirball Center Drive Off-ramp, new Off-ramp is opened to traffic.                       |
| October 7, 2013   | Bridge 8 EB Wilshire Blvd. to NB I-405 On-ramp, top deck and barrier concrete pour completed.        |
| October 8, 2013   | Bridge 2 Exposition Avenue UC, top deck concrete pour completed.                                     |
| October 25, 2013  | Bridge 23 Sepulveda Blvd. UC, top deck concrete pour completed.                                      |
| October 26, 2013  | Bridge 21 Skirball Center Dr. OC, top deck concrete pour completed.                                  |
| October 30, 2013  | Bridge 8 EB Wilshire Blvd. to NB On-ramp falsework removed.  |
| November 2, 2013  | SB I-405 On-ramp from EB Wilshire Blvd. is opened to full capacity traffic.                          |
| November 17, 2013 | Bridge 8 EB Wilshire Blvd. to NB I-405 On-ramp is opened to traffic. 90-day closure window is ended. |
| November 23, 2013 | Bridge 14 I-405 NB Off-ramp to Sunset Blvd. Falsework is removed.                                    |
| November 24, 2013 | Bridge 21 Skirball Center Drive OC falsework is removed.   |
| November 25, 2013 | Bridge 14 I-405 Off-ramp to Sunset Blvd. is opened to traffic. 120-day closure window is ended.      |
| December 14, 2013 | Bridge 17 Church Lane UC, Top Deck Concrete is poured.   |
| December 17, 2013 | RW 1720 & 1730, Shotcrete installation is completed.   |
| December 18, 2013 | Bridge 22, Mulholland OC, Bridge is opened to full traffic capacity.                                 |
| December 23, 2013 | Bridge 2, Exposition UC, Bridgework is completed.  |

## CHRONOLOGY OF EVENTS (Cont'd)

|                   |  |
|-------------------|--|
| January 7, 2014   | RW 1730, artwork installation is started.  |
| January 21, 2014  | Bridge 21 Skirball Center drive, approach slabs completed.   |
| January 23, 2014  | Bridge17 Church Lane, approach slabs completed.  |
| January 24, 2014  | Bridge 19 Sepulveda Blvd., bridge work completed.  |
| February 4, 2014  | Bridge 23, Sepulveda Blvd., bridge work completed.   |
| February 14, 2014 | 80-hour lane reduction begins.   |
| February 18, 2014 | 80-hour lane reduction ends.   |
| February 18, 2014 | Area 5-7 median barrier installation and AC grind and overlay, planned during 80-hour lane reduction, completed. |
| March 4, 2014     | Getty Center North Canyon Road Construction begins with drainage system installation.                            |
| March 5, 2014     | Walls 1720 and 1730 Artwork stenciling completed.  |
| March 12, 2014    | Area 6 Skirball Center NB I-405 traffic switched to new median lane.   |
| March 15, 2014    | Area 4 Sepulveda Blvd. SB paving replacement from Montana Avenue to Church Lane begins.                          |
| March 21, 2014    | Bridge 21, Skirball Center Dr., additional lane, total of 2 SB lanes and 1 NB Lane, opened to traffic.           |
| April 11, 2014    | Bridge 9, NB I10 to Wilshire Blvd. HOV Lane opened to traffic.   |
| April 28, 2014    | NB I-405 I-10 to Wilshire Blvd. HOV Lane opened to traffic.  |
| May 23, 2014      | NB I-405 HOV Lane fully opened to traffic.   |
| May 31, 2014      | SB I-405 General Purpose Lanes from Getty Center to Wilshire Area, paving and permanent delineation completed.   |
| June 1, 2014      | Area 4 Sunset, Mainline K-rail removal completed.  |
| June 1, 2014      | Area 5 Sepulveda, Mainline Pavement grind and overlay and K-rail removal completed.                              |

### CHRONOLOGY OF EVENTS (Cont'd)

|                    |  |
|--------------------|--|
| June 25, 2014      | Area 7, Valley Vista, cul-de-sac paving completed.   |
| July 3, 2014       | SB I-405 final lane configuration completion.  |
| July 10, 2014      | Wall 1746 slope paving completed.  |
| July 11, 2014      | Walls 1720 and 1730 slope paving stain completed.  |
| July 16, 2014      | Area 2 LABSL lighting final inspection completed.  |
| August 12, 2014    | Slope stabilization behind Wall 2011 begins.   |
| August 18, 2014    | GSA anti-climb fence installation begins.  |
| August 30, 2014    | SB Sepulveda from Skirball Center Drive to Mountaingate Drive paving and striping completed. |
| September 12, 2014 | GSA Anti-Climb Fence installation completed.   |
| September 28, 2014 | Right-turn lanes at SB Skirball Center Drive On and Off Ramps completed.                     |
| October 11, 2014   | Segment 1 landscaping work completed.  |
| October 18, 2014   | Area 4 and Area 7 preliminary punchlist work begins.   |
| October 23, 2014   | Area 6 preliminary punchlist work begins.  |
| October 24, 2014   | Area 5 preliminary punchlist work begins.  |
| November 10, 2014  | .Segment 3 landscape punchlist work begins.  |
| November 14, 2014  | Area 1 landscape punchlist completed.  |
| November 14, 2014  | Segment 2 landscape punchlist work completed.  |
| November 20, 2014  | Area 6 Mulholland West Area punchlist work begins.   |
| December 6, 2014   | Area 4 Sunset/Sunset cul-de-sac ADA ramps completed.   |
| December 10, 2014  | Area 2 Ohio and Cotner ADA ramps completed.  |
| December 20, 2014  | Area 3 ADA ramps completed.  |

## CONSTRUCTION PHOTOGRAPHS



Segment 1 GSA Landscaping.



Getty Center North Canyon Road.

## CONSTRUCTION PHOTOGRAPHS



Area 6 Wildlife Fencing.



Area 6 Wildlife Fencing.

## CONSTRUCTION PHOTOGRAPHS



Area 7 Landscaping.



BMP 5 Area Landscaping.

## APPENDICES

### COST AND BUDGET TERMINOLOGY

**APPROVED BUDGET:** The Approved Project Budget as established by Metro Board of Directors at the time it authorizes Construction Project Management Division to commence full design and construction of the project (Project Adoption).

**CURRENT BUDGET:** The Original Budget plus all budget amendments approved by formal Metro action. Also referred to as Approved Budget.

**CURRENT FORECAST:** Evaluation of costs to go combined with actual expenditures.

**COMMITMENTS:** The total of actual contract awards, executed change orders or amendments, approved work orders of Master Cooperative Agreements, offers accepted for purchase of real estate, and other Metro actions which have been spent or result in the obligation of specific expenditures at a future time.

**EXPENDITURES:** The total dollar amount of funds expended by Metro for contractor or consultant invoices, third party invoices, staff salaries, real estate and other expenses that is reported in Metro's Financial Information System (FIS).

**PROJECT APPROVAL & ENVIRONMENTAL DOCUMENTS:** Costs for agency staff and consulting contracts leading to project approval and environmental clearances.

**PLANS, SPECS. & ENGINEERING:** Agency staff and consulting contract costs between the initial project approval and environmental clearances but prior to start of construction.

**RIGHT-OF-WAY SUPPORT:** Costs for agency staff involved in real estate appraisal and parcel purchase activities and agency staff costs involved in utility relocations and third party agreements. Includes real estate appraisal costs.

**CONSTRUCTION SUPPORT:** Agency staff and consulting contract costs occurring during the construction phase of the project.

**CONSTRUCTION:** Costs for highway construction, bridge and on/off ramp construction and modifications, retaining wall and sound wall construction. Includes final design costs by Design/Build Contractor.

**RIGHT-OF-WAY CAPITAL:** Costs for real estate parcel purchases and utility relocations costs after approval of utility company agreements. Includes costs for Master Cooperative Agreements after approval by agencies.



## APPENDIX

### LIST OF ACRONYMS

|          |   |
|----------|---|
| ARRA     | American Recovery & Reinvestment Act    |
| AWIS     | Automated Work Zone Information Systems |
| CADD     | Computer Aided Drafting and Design      |
| CALTRANS | California Department of Transportation |
| CCTV     | Closed Circuit Television               |
| CD       | Calendar Day                            |
| CDFG     | California Department of Fish and Game  |
| CEQA     | California Environmental Quality Act    |
| CM       | Construction Manager                    |
| CMAC     | Congestion Mitigation Air Quality       |
| CMIA     | Cash Management Improvement Act         |
| CMS      | Changeable Message Signs                |
| CN       | Change Notice                           |
| CO       | Change Order                            |
| COE      | Corps of Engineers                      |
| COLA     | City Of Los Angeles                     |
| CPM      | Critical Path Method                    |
| CPUC     | California Public Utilities Commission  |
| CR       | Camera Ready                            |
| CTC      | California Transportation Commission    |
| D-B      | Design-Build                            |
| D-B-B    | Design-Bid-Build                        |
| DD       | Design Development                      |
| DEIR     | Draft Environmental Impact Report       |
| DR       | Deficiency Report                       |
| DWP      | Department of Water and Power           |
| EIR      | Environmental Impact Report             |
| EIS      | Environmental Impact Statement          |
| FD       | Final Design                            |
| FEIR     | Final Environmental Impact Report       |
| FHWA     | Federal Highway Administration          |
| FIS      | Financial Information System            |
| FOCT     | Fiber Optics Cable Transmission System  |
| FTE      | Full Time Equivalent                    |
| GDSR     | Geotechnical Design Summary Report      |
| GSA      | General Services Administration         |
| GSRD     | Gross Solids Removal Devices            |
| HAR      | Highway Advisory Radio                  |
| HOV      | High Occupancy Vehicle                  |
| IFB      | Invitation for Bid                      |
| IPO      | Integrated Project Office               |
| ITS      | Intelligent Transportation Systems      |

## APPENDIX

### LIST OF ACRONYMS (Continued)

|        |  |
|--------|--|
| LA     | Los Angeles  |
| LABOE  | Los Angeles Bureau of Engineering                        |
| LACFCD | Los Angeles County Flood Control District                |
| LADOT  | Los Angeles Department of Transportation                 |
| LADPW  | Los Angeles Department of Public Works                   |
| LADWP  | Los Angeles Department of Water and Power                |
| LARTMC | Los Angeles Regional Transportation Management Center    |
| LFAT   | Local Field Acceptance Test                              |
| LNTP   | Limited Notice To Proceed                                |
| LONP   | Letter Of No Prejudice                                   |
| LOP    | Life of Project  |
| MCA    | Master Cooperative Agreement                             |
| METRO  | Los Angeles County Metropolitan Transportation Authority |
| MIS    | Major Investment Study                                   |
| MOT    | Maintenance of Traffic                                   |
| MPSR   | Monthly Project Status Report                            |
| MSE    | Mechanically Stabilized Earth                            |
| MVDS   | Microwave Vehicle Detection System                       |
| MVP    | Maintenance Vehicle Pullouts                             |
| MWD    | Metropolitan Water District                              |
| N/A    | Not Applicable   |
| NCR    | Non-Conformance Report                                   |
| NEPA   | National Environmental Quality Act                       |
| NHS    | National Highway System                                  |
| NOA    | Notice of Award  |
| NTE    | Not to Exceed  |
| NTP    | Notice To Proceed  |
| NTSC   | National Television System Committee                     |
| P6     | Primavera Project Planner® (scheduling software)         |
| PC     | Project Control  |
| PE     | Preliminary Engineering                                  |
| PIP    | Project Implementation Plan                              |
| PM     | Project Manager  |
| PMA    | Project Management Assistance                            |
| PMP    | Project Management Plan                                  |
| P&P    | Policies & Procedures                                    |
| PR     | Project Report   |
| PS&E   | Plans, Specs & Engineering                               |
| PSR    | Project Study Report                                     |
| QA     | Quality Assurance  |
| QAR    | Quality Assurance Report                                 |

**APPENDIX**  
**LIST OF ACRONYMS (Continued)**

|            |  |
|------------|--|
| QC         | Quality Control  |
| QPSR       | Quarterly Project Status Report  |
| RFC        | Request For Change or Released for Construction (based on context)                   |
| RFP        | Request For Proposal   |
| RMS        | Ramp Metering Systems  |
| ROM        | Rough Order of Magnitude   |
| ROW        | Right-Of-Way   |
| SIT        | System Integration Testing   |
| RSTP       | Regional Surface Transportation Program  |
| RWQCB      | Regional Water Quality Control Board   |
| SAFETEA-LU | Safe, Accountable, Flexible, Efficient Transportation Equity Act: A Legacy for Users |
| SCE        | Southern California Edison   |
| SONET      | Synchronous Optical Network  |
| SOV        | Schedule Of Value  |
| SOW        | Statement Of Work  |
| SP         | Special Provision  |
| TBD        | To Be Determined   |
| TCRP       | Traffic Congestion Relief Program  |
| TMS/CS     | Traffic Monitoring Stations/Count Stations   |
| TPM        | Transportation Management Plan   |
| VE         | Value Engineering  |
| WBS        | Work Breakdown Structure   |
| WP         | Work Package   |