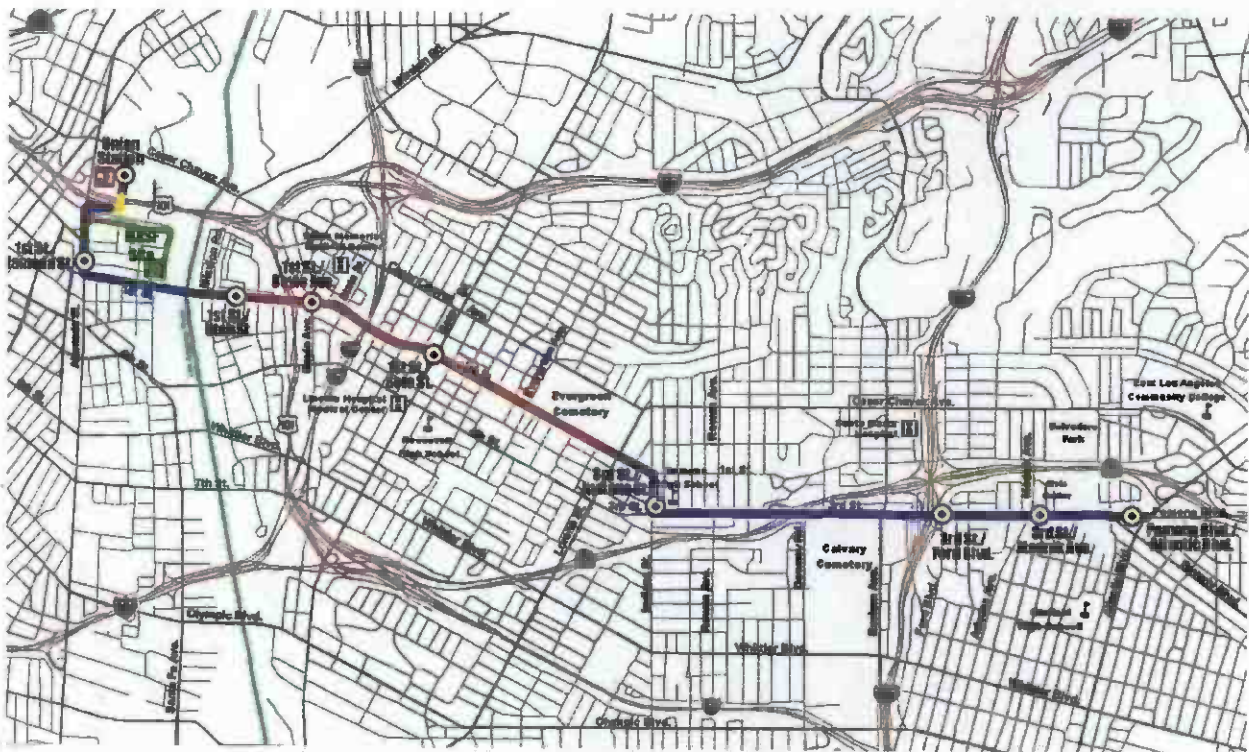




Los Angeles County Metropolitan Transportation Authority

## Eastside Gold Line Extension Monthly Project Status Report



January 2003

# **EASTSIDE GOLD LINE EXTENSION**

## **MONTHLY PROJECT STATUS REPORT**

THE PREPARATION OF THIS DOCUMENT HAS BEEN FINANCED IN PART THROUGH A GRANT FROM THE U. S. DEPARTMENT OF TRANSPORTATION, FEDERAL TRANSIT ADMINISTRATION (FTA), UNDER THE FEDERAL TRANSIT ACT OF 1964, AS AMENDED, AND FUNDS FROM THE STATE OF CALIFORNIA.

**JANUARY 2003**

## TABLE OF CONTENTS

	Page No.
Project Overview.....	1
Management Issues.....	2
Project Status	
• Project Scope.....	3
• Schedule	
○ Key Milestones Six-Month Lookahead .....	4
○ Project Master Schedule Critical Path.....	5
○ Critical Path Narrative .....	6
• Project Cost Status.....	7
• Change Control Status.....	8
• Financial/Grant Status.....	9
• Staffing.....	10
• Real Estate.....	11
• Environmental.....	12
• Community Relations.....	12
• Quality Assurance.....	12
• Safety.....	13
• Third Party.....	14-15
• CPUC Crossing.....	16
FFGA Application and Supporting Documents.....	17-18
Photographs (Project Renderings).....	19-21
Appendices.....	22-25

## PROJECT OVERVIEW

*The Eastside Gold Line Extension Project is a six-mile, dual track light rail system with eight new stations and one station modification. The system originates at Union Station in downtown Los Angeles, where it connects with the Pasadena Gold Line, traveling generally east to Pomona and Atlantic Boulevards. The system will bridge State Route 101 Freeway and traverse the existing 1<sup>st</sup> Street Bridge over the Los Angeles River. The system will travel south on Alameda Street and then east on 1<sup>st</sup> Street with two stations at Alameda and Utah Streets. East of the Los Angeles River and 1<sup>st</sup> and Utah Streets, the alignment transitions to tunnel for approximately 1.8 miles, and continues beneath 1<sup>st</sup> Street to underground stations at 1<sup>st</sup> Street and Boyle Avenue and 1<sup>st</sup> Street and Soto Street. The alignment returns to the surface near the intersection of 1<sup>st</sup> Street and Lorena Streets, then jogs to the south, transitioning to follow 3<sup>rd</sup> Street with stations at Indiana Street, Ford Boulevard, Mednik Avenue and Pomona and Atlantic Boulevards.*

Total design progress through this reporting period is 96% complete vs. 96% planned.

The camera-ready design package for Contract C0802 will be issued to Caltrans in late March 2003 for incorporation into Caltrans 101 Freeway Widening Project bid package. Ongoing project scope definition continues for Contract C0801 Stations, Trackwork and Systems. This contract will be advertised for bid in late March 2003.

The independent cost estimates for Contract C0801 and Contract C0802 will be completed in February 2003. Bid opening for Contract C0800 will occur on February 26, 2003. Both the estimates and bids are required for the final FFGA application. It is anticipated that the FFGA approval will occur by August 2003.

Approval from the FTA was received on November 12, 2002 to incur cost up to \$1.9 million and to be eligible for reimbursement for a portion of the advanced utilities relocation. A supplemental request for Letter of No Prejudice (LONP) was submitted to the FTA on November 27, 2002 for the remaining activities (\$154.4M). The remaining activities include acquisition of Earth Pressure Balance Machines (EPBMs), remaining utility relocations, demolition, procurement of schedule critical activities and acquisition of the light rail vehicles. It is anticipated that FTA will grant approval for the LONP by mid-February 2003.

## MANAGEMENT ISSUES

**Ongoing Item (Date Initiated: October 2002)**

FEDERAL TRANSIT ADMINISTRATION (FTA) APPROVAL OF THE LETTER OF NO PREJUDICE (LONP) FOR CERTAIN CRITICAL ITEMS

**Concern/Impact**

MTA is seeking authorization from the FTA to incur costs on certain critical path activities, with the understanding that these costs will become reimbursable as eligible expenses upon approval of a Full Funding Grant Agreement (FFGA). MTA is seeking approval from the FTA to proceed with these activities by mid-February 2003 or risk jeopardizing the current projected Revenue Operations Date of October 2008.

**Status/Action**

Approval from the FTA to incur cost up to \$1.9 million and to be eligible for reimbursement for the advanced utility relocations was received on November 12, 2002. A supplemental request for LONP was sent on November 27, 2002. FTA approval of the Eastside Gold Line Extension LONP by mid-February 2003 is crucial to the MTA in order to avoid delays to the construction contracts as they are currently written, particularly as it relates to advanced utility relocations required for Contract C0800 (Tunnel Contract). Although the FTA granted \$1.9 million for a portion of the advanced utility relocation work, MTA still requires the additional \$4.0 million to complete all advanced utility relocations related to Contract C0800.

## PROJECT SCOPE

### Contract C0802 – 101 Freeway Bridge

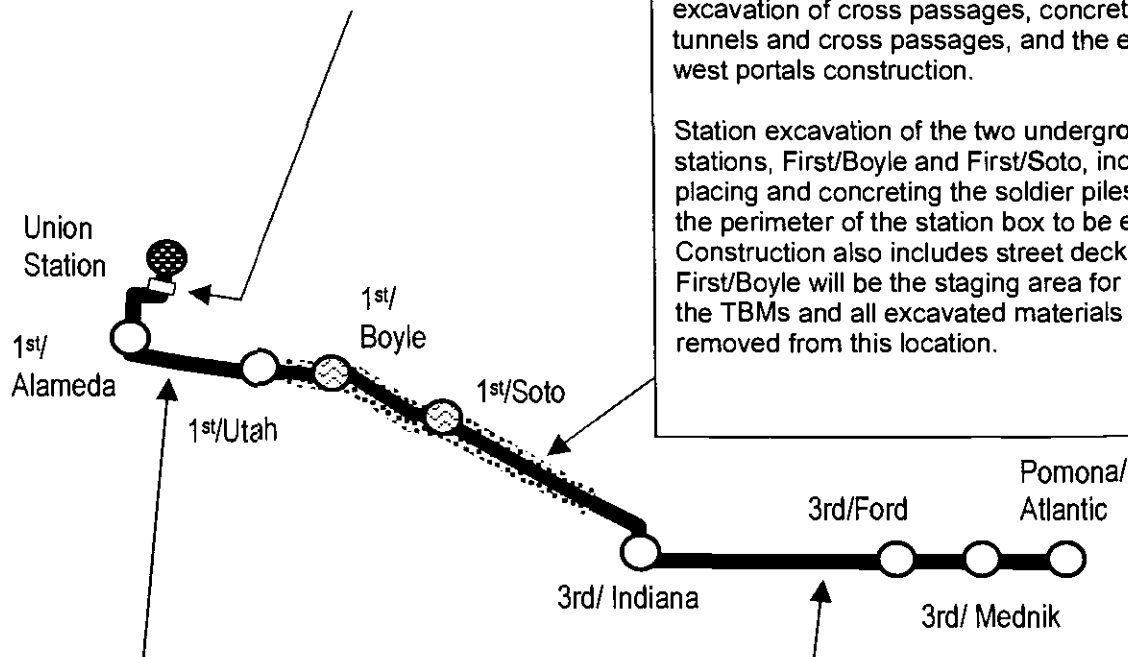
**Overcrossing:** The construction of the bridge will be combined with Caltrans freeway improvements project. While Caltrans will advertise and administer the construction, MTA will remain responsible for the design and construction costs of the bridge overcrossing.

### Contract C0800 - Tunnel and Station

**Excavation:** This contract will be design/bid/build. The contractor will be selected utilizing a sealed bid, where the award will be based on the lowest priced technically qualified bid.

The start of tunnel construction is based upon the completion of final design, successful construction award and acquisition of full take real estate parcels. Construction of the 1.8 mile tunnel segment includes tunnel excavation using two Earth Pressure Balance Machines (EPBM) type, excavation of cross passages, concreting of the tunnels and cross passages, and the east and west portals construction.

Station excavation of the two underground stations, First/Boyle and First/Soto, include drilling, placing and concreting the soldier piles that line the perimeter of the station box to be excavated. Construction also includes street decking. First/Boyle will be the staging area for assembling the TBMs and all excavated materials will be removed from this location.



**Contract C0801 - Stations, Trackwork, and Systems:** This contract will be design/build. The contractor will be selected utilizing the two-step low bid procurement, following the guidelines set forth in the Federal Acquisition Regulations (FAR) Part 15 and requirements of California Public Utilities Code (CPUC) Section 130242.

The construction of each underground station will occur at the successful completion of the critical tunnel boring work under contract C0800. Construction of the two underground stations includes structural walls, station platforms, mezzanines, station entrances, and plazas, architectural finishes and all related mechanical and electrical work.

All six of the at-grade stations along the six-mile alignment will be constructed under this contract. This contract includes all the trackwork installation and testing for the entire alignment.

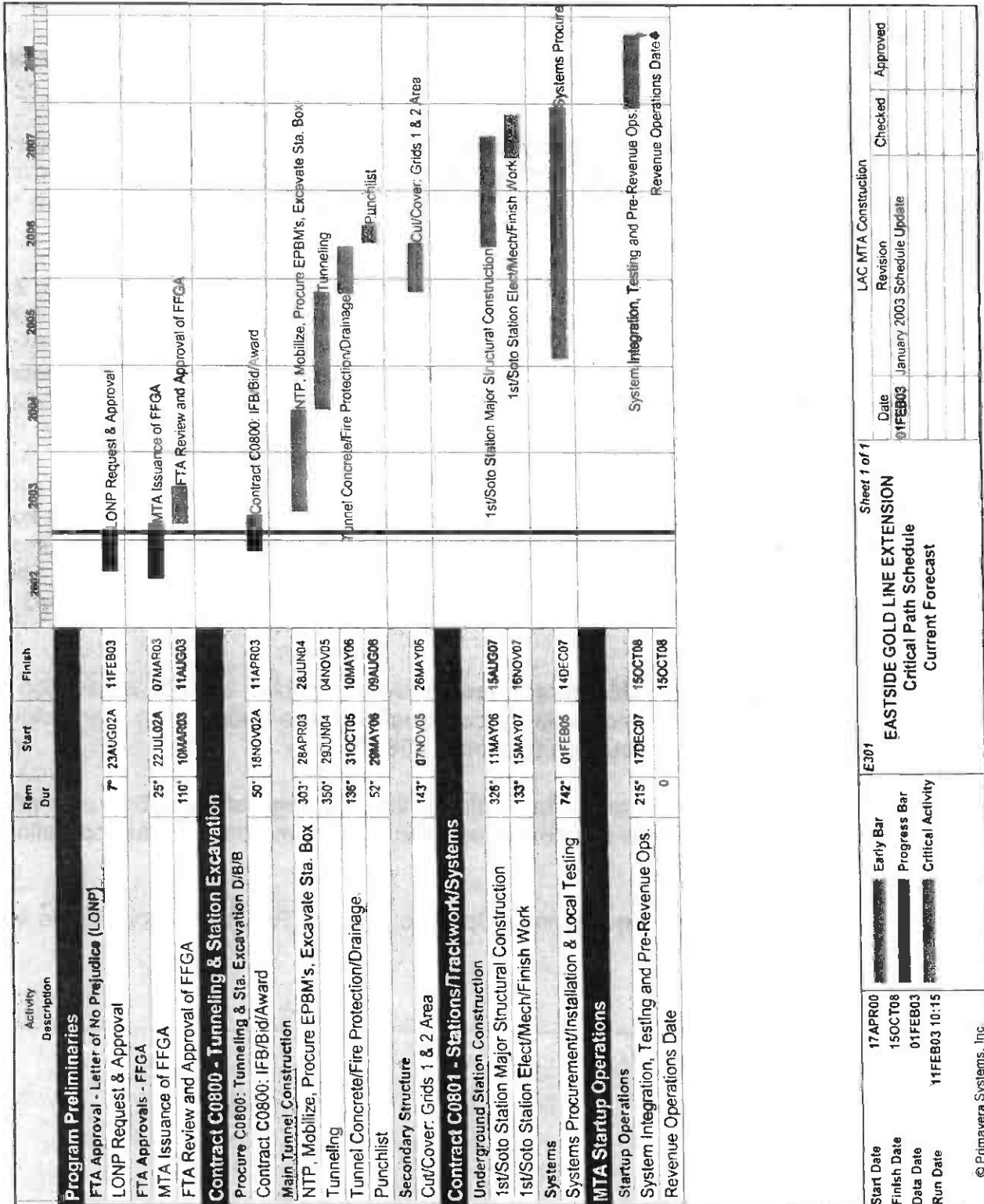
Systems installation and testing is inclusive of power systems, automatic train control, fire and emergency management, TRACS and communications systems. The contractor will be responsible for systems integration testing for the entire line segment prior to pre-revenue operations.

### KEY MILESTONE SCHEDULE SIX-MONTH LOOKAHEAD

	Milestone Date	Jan-03	Feb-03	Mar-03	Apr-03	May-03	Jun-03
Commence Construction of Advanced Utility Relocations	2/3/03		△				
FTA Approval of Letter of No Prejudice	2/11/03*		FTA				
Caltrans Approve type Selection Report (TSR) - 710 Freeway Undercrossing (C0801)	2/18/03*		△				
Bid-Due-Contract C0800 (Tunnel)	2/26/03*		◆				
Caltrans Review/Approve PS&E - Tunnel under 101 & I-5 Freeways (C0800)	2/28/03*		△				
Caltrans Review/Approval PSR/ PR /ISA /TSR etc-Tunnels under 101 Frwy (C0800)	2/28/03*		△				
MTA sign Agreement with LAUSD - Ramona HS Reconfiguration	2/28/03*		◆				
MTA Submit Final FFGA Application	3/7/03*			◆			
Camera Ready - 101 Frwy Overcrossing Final Design (Contract C0802)	3/19/03*			○			
Submit Applications to CPUC for Approval-Grade Crossings Batches 3, 4, 4A, 6 & 13	3/24/03*			◆			
Submit Applications to CPUC for Approval-Grade Crossings (Batches 14,15, 16, 17 & 18)	3/31/03*			◆			
Issue Two-Step Invitation for Bid - C0801	3/31/03*			◆			
Award Contract - Contract C0800	4/11/03*				◆		
Caltrans Approve PSR/PR - 60 Freeway Undercrossing (C0801)	4/11/03*				△		
Notice To Proceed Contract C0800	4/28/03*				◆		
Caltrans Review/Approve PS&E Structures /Roadway-101 Frwy Overcrossing (C0802)	5/12/03*					△	
Bid Due (Technical & Qualification) C0801	6/9/03*						◆

◆ MTA Staff Milestone	○ Eastside LRT Partners Deliverables	FTA FTA Approval
△ Other Agencies	* New Date	 MTA Board Approval

## PROJECT MASTER SCHEDULE CRITICAL PATH





## CRITICAL PATH NARRATIVE

After completion in November of final design for the tunneling contract (Contract C0800), the critical path moved into the bid and award period. The Contract C0800 Invitation For Bid (IFB) was advertised on December 2, 2002 and bids are due on February 26, 2003.

Prior to awarding Contract C0800, certain key critical construction activities and procurement need to occur prior to receiving a Full Funding Grant Agreement (FFGA). FTA approved MTA's request for Letter of No Prejudice (LONP) for preliminary utility relocations (\$1.9M) on November 12, 2002.

A supplemental request for LONP (totaling \$154.4M) was submitted to FTA on November 27, 2002 for certain critical activities required during early construction of Contract C0800. These activities include acquisition of Earth Pressure Balance Machines (EPBMs), continuation of advanced utility relocations, demolition, and procurement of excavation support systems. Acquisition of the light rail vehicles through Contract P2550 was also requested in order to secure a lower cost per vehicle as part of a base buy of vehicles for the MTA. It is expected that the FTA will approve this LONP by February 11, 2003.

Upon the issuance of Notice To Proceed for Contract C0800, there will be a 14-month lead time for the procurement of two Earth Pressure Balance Machines (EPBMs). Concurrent with the EPBM procurement period, the project will proceed with mobilization, pile installation, and station box excavations. The station box excavations are scheduled to complete prior to the EPBM delivery.

The critical path continues with EPBMs assemblies, excavation of both tunnels, excavation of crosspassages, and tunnel invert and walkway construction. The critical path then follows First/Soto underground station construction (Contract C0801).

The systems equipment installation and local testing is the last stage of the critical path prior to entering the final test stage where systems integration testing and pre-revenue operations are conducted.

Based on the updated schedule, the Revenue Operations Date (ROD) is anticipated in late 2008.

## PROJECT COST STATUS

*In \$ Million*

Description	Previous Estimated Project Cost	Current Estimated Project Cost	Variance	Commitments	Expenditures
Guideways	209.4	209.4	0.0	0.0	0.0
Yards & Shops	6.3	6.3	0.0	0.0	0.0
Systems/Equipment	67.5	67.5	0.0	0.0	0.0
Stations	106.5	106.5	0.0	0.0	0.0
Vehicles	115.2	115.2	0.0	0.0	0.0
Special Conditions	89.9	89.9	0.0	11.4	0.6
Right-of-Way	42.2	42.2	0.0	28.0	6.3
Professional Services	172.9	172.9	0.0	48.3	34.7
Contingency	102.8	102.8	0.0	0.0	0.0
<b>TOTAL</b>	<b>912.7</b>	<b>912.7</b>	<b>0.0</b>	<b>87.7</b>	<b>41.6</b>

The Current Estimated Project Cost remains unchanged at \$912.7 million. Even though there are a few line items in which cost modifications are known, the total project cost will remain at the current level until March 2003. In March 2003, staff will submit the final FFGA application that will reflect all cost modifications known to date, plus reflect the independent cost estimates for Contracts C0801 and C0802 and the recommended award amount for Contract C0800. Receipt of contractor bid proposals for Contract C0800 is planned for February 26, 2003.

The items known to date, that will be affected are as follows:

- Increases to Real Estate Property Acquisitions
- Elimination of bus procurement from the project
- Contract P2550 Procurement of Light Rail Vehicles, reduction in the required number of vehicles and potential reduction in cost per vehicle based on the apparent low bid price which is subject to the completion of bid evaluation and award
- Increase to the Non-Revenue Connectors and Yards & Shops based on the latest design. To date, this increase will not affect the overall project forecast of \$912.7 million.

### CHANGE CONTROL STATUS

Description	A	B				C	D=A+B+C	E		F=D+E
	Award Amount	Approved				Total Approved Amount	Obligated	Potential		Total Potential Value
		Executed Changes		LNTPs (NTE)			Pending			
		#	\$	#	\$			#	\$	
Engineering Design Services	18,929,502	9	9,642,668	0	0	28,572,170	3	18,450,000	47,022,170	
Environmental Services	448,635	4	183,517	4	57,000	689,152	0	88,000	777,152	
Design/Build Advisory Panel Services	1,059,840	0	0	0	0	1,059,840	0	0	1,059,840	
Project Management Assistance Support	166,366	7	3,256,556	0	0	3,422,922	0	0	3,422,922	
TOTAL	20,604,343	20	13,082,741	4	57,000	33,744,084	3	18,538,000	52,282,084	

## FINANCIAL/GRANT STATUS

JANUARY 2003

STATUS OF FUNDS BY SOURCE

in \$ millions

SOURCE	(B) TOTAL FUNDS ANTICIPATED	(C) TOTAL FUNDS AVAILABLE	(D) COMMITMENTS \$	(D/B) %	(E) EXPENDITURES \$	(E/B) %	(F) BILLED to FUNDING SOURCE \$	(F/B) %
FEDERAL - SECTION 5309 NEW START	490.7	5.9	5.9	1%	5.9	1%	5.9	1%
FED - SECTION 5309 FIXED GUIDEWAY	38.9			0%		0%		0%
FEDERAL - CMAQ	4.4			0%		0%		0%
STATE TCRP	45.0	45.0	45.0	100%	20.9	46%	20.9	46%
STATE RIP	196.2	5.2	36.7	19%	5.2	3%	5.2	3%
PROPOSITION A 35% RAIL CAPITAL	127.4			0%		0%		0%
LEASE REVENUES	10.1			0%		0%		0%
UNBILLED ACCRUALS		9.5			9.5			
TOTAL	912.7	65.6	87.6	10%	41.6	5%	32.0	4%

(1) Based on August 2002 Section 5309 New Start Report

NOTE: EXPENDITURES ARE CUMULATIVE THROUGH DECEMBER 2002.

## STATUS OF FUNDS ANTICIPATED

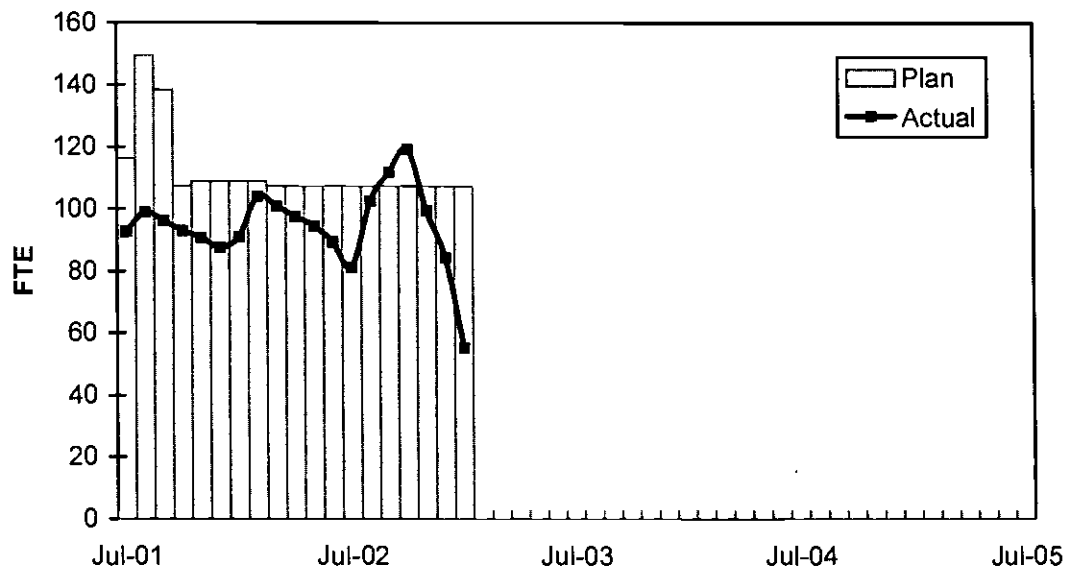
**FEDERAL SECTION 5309:** MTA submitted a grant amendment for \$7,425,098 in March 2002. Grant amendment was approved on September 19, 2002. Funds are available for draw down.

**STATE TCRP:** In April 2002, the CTC approved an MTA application and allocation request for \$25.5M of State TCRP funds for final design, right-of-way, and construction activities. Funds are available for draw down.

MTA plans to submit a STIP Amendment in February 2003 to convert \$191 million of unallocated TCRP funds to STIP funds. CTC action is expected to take place on April 3, 2003.

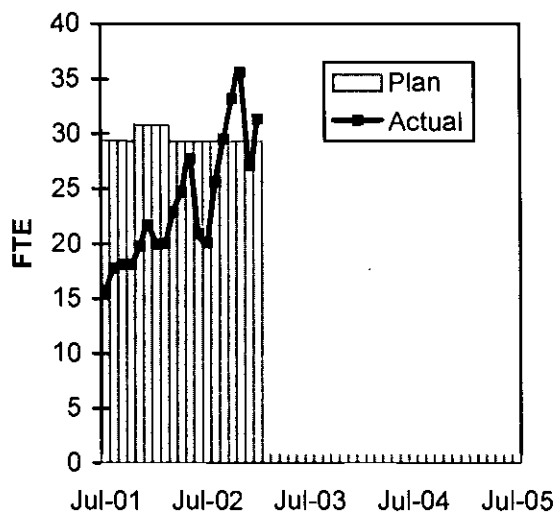
## STAFFING STATUS

### TOTAL PROJECT STAFFING

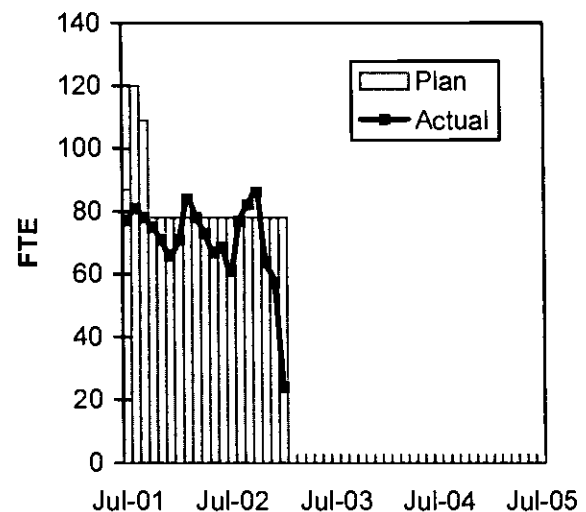


The drop in staffing coincides with the conclusion of the majority of design activities and the bid and award period for Contract C0800. Staffing requirements are considerably less during this period.

### AGENCY STAFFING



### ESLRT PARTNERS



### REAL ESTATE STATUS

- For C0800, the tunnel portion of the alignment, 43 parcels are required for acquisition (10 full takes, 18 sub-surface easements, 6 part takes, 5 sub-surface easements/building protection, 2 building protections, 1 street vacation and 1 permit from Caltrans which will be coordinated through MTA's Third Party Coordination).
- For C0801, the at-grade portion of the alignment, 33 parcels are required for acquisition (20 full takes, 8 partial takes, 3 street vacations, and 2 permits required from Caltrans which will be coordinated through the MTA's Third Party Coordination office). Nine parcels have been identified for the proposed Ramona High School site reconfiguration.
- For C0802, 3 parcels are required (2 surface easements and 1 full take parcel).
- Twenty-eight parcels have been certified, twelve for C0800, fifteen for C0801 and one for C0802. Real Estate completed the appraisals and Phase 1 due diligence environmental work on required parcels located on First/Boyle and First/Soto areas. Offers have been made 11 property owners. Three parcels have been acquired and two are in escrow. MTA Board adopted a Resolution of Necessity to condemn six parcels, however, negotiations are underway with three of the property owners.

### REAL ESTATE ACQUISITION SCHEDULE SUMMARY

Number of Parcels	Required	Acquired	On Schedule	Behind Schedule	
				Number	Avg. Calendar Days
This Period	11	3	11	0	0
Last Period	79	0	79	0	0

### REAL ESTATE STATUS TO DATE BY CONTRACT

Actual Parcels

Contract	No. of Parcels	Certified	Just Comp Approved	Offers Made	Agreements Signed	Condemnation	Parcels Available	Parcels projected to be unavailable by need date
C0800	43	12	8	10	4	2	3	0
C0801	33	15	3	2	5	0	0	0
C0802	3	1	0	0	0	0	0	0
<b>TOTAL</b>	79	28	11	12	9	2	3	0
Last Period Total	79	28	11	11	4	0	0	0

## **ENVIRONMENTAL STATUS**

- Completed and submitted permit applications to proper regulatory agencies.
- Coordinated the Stormwater Pollution Prevention Plan with Caltrans.
- Coordinated PSR/PR meetings with Caltrans.
- Reviewed Phase I/II documents from MTA Real Estate for environmental conditions.

## **COMMUNITY RELATIONS STATUS**

- Coordinated public outreach events with community representatives to facilitate public interest in the Eastside Gold Line Extension Project.
- Conducted meetings with business owners to discuss construction impact mitigation.
- Initiated education campaign on advanced utility relocation.
- Coordinated pre-construction survey activities with Pinnacle One.

## **QUALITY ASSURANCE STATUS**

- Received and accepted Eastside Partners corrective actions for C0800 camera ready/final submittal design package.
- Conducted surveillance S2003-01 Eastside Partners design review and quality assurance activities for C0800 Addendum 1 design package. Results found the Eastside Partners were in compliance with their Quality Procedures.
- Conducted surveillance S2003-44 Eastside Partners design review and quality assurance activities for C0800 Addendum 2 design package. Results found the Eastside Partners were in compliance with their Quality Procedures.

## **SAFETY STATUS**

- Participated in bi-weekly progress meetings with Construction Management to discuss safety related issues and construction schedule.
- Reviewed safety specifications for Contract C0801 stations, trackwork and systems.



### THIRD PARTY AGREEMENT STATUS

Third Party	Type of Agreement	Construction Need Date	Forecast Execution Date	Status/ Comments
City of Los Angeles	Amendment	4/16/03	12/23/02	Fully executed on 12/23/02.
Los Angeles County	Master	7/03	2/03	Negotiations are in progress.
Caltrans (All Projects)	Master	4/16/03	2/03	Negotiations completed and the document was presented to the MTA Board on 12/12/02. MTA Board asked for provisions on delay reimbursement, which is being negotiated.
Caltrans (101)	Design	5/03	2/03	Caltrans submitted 2 <sup>nd</sup> draft to MTA and comments were transmitted to Caltrans.
Caltrans (101)	Construction	5/03	3/1/03	Caltrans has delivered a draft to MTA and some language for the reimbursement was proposed on 1/28/03.
Caltrans (101)	Maintenance	N/A		Initial negotiation meeting with Caltrans on 1/9/03 resulted in MTA's recommendation to use the existing agreement with a similar San Diego system. The San Diego agreement was forwarded on 1/29/03 and a meeting has been scheduled for 2/13/03.
LADWP (Water)	Amendment	4/16/03	3/03	Draft amendment submitted.
LADWP (Power)	Amendment	4/16/03	3/03	Draft amendment submitted.
So. Cal. Edison Co.	Amendment	7/03	3/03	Draft amendment submitted.
The Gas Company	Amendment	4/16/03	3/03	Draft amendment submitted.
Pacific Bell	Amendment	4/16/03	3/03	The County Counsel is discussing the agreement with Pac Bell. Another draft, with agreed upon comments incorporated will be provided by 1/13/03.
Adelphia Cable Company	Amendment	4/16/03	3/03	Draft amendment submitted.
California Water Service Company	Amendment	4/16/03	3/03	Draft amendment submitted.
L.A. County Sanitation Districts	Amendment		3/03	Draft amendment is being prepared.
MCI Worldcom	Amendment	4/16/03	3/03	Draft amendment submitted.
Metropolitan Water District	Amendment	4/16/03	3/03	1/17/03 meeting resulted in using the existing agreement.
Verizon Wireless	Amendment	4/16/03	5/03	Facilities are now shown as being impacted by Eastside Construction. An amendment is being drafted.
AT & T Local Services	Amendment	4/16/03	5/03	Facilities are now shown as being impacted by Eastside Construction. An amendment is being drafted.

### THIRD PARTY AGREEMENT STATUS (Continued)

Third Party	Type of Agreement	Construction Need Date	Forecast Execution Date	Status/ Comments
GST	Amendment		7/03	Facilities are not impacted by Eastside Construction
Exxon Mobil Oil Company	Amendment		7/03	Facilities are not impacted by Eastside Construction
Pacific Pipeline Company	Amendment		7/03	Facilities are not impacted by Eastside Construction
Kinder Morgan Pipeline Company	Amendment		7/03	Facilities are not impacted by Eastside Construction
Tosco Refining Company	Amendment		7/03	Facilities are not impacted by Eastside Construction
Equilon Pipeline Company	Amendment		7/03	Facilities are not impacted by Eastside Construction
Level 3 Communications	Amendment		7/03	Facilities are not impacted by Eastside Construction
Broadwing Communications	Amendment		7/03	Facilities are not impacted by Eastside Construction
Eller Media	Amendment		7/03	Facilities are not impacted by Eastside Construction
Qwest-SP Telecom	Amendment		7/03	Facilities are not impacted by Eastside Construction

## CPUC CROSSING SUMMARY

BATCH	STATUS	INITIAL PKG SUBMITTAL TO MTA	FIELD DIAGNOSTIC MEETING	FINAL TRAFFIC DRAWINGS DUE	FINAL PKG SUBMITTAL TO CPUC
1	Complete	Complete	Complete	Complete	Complete
2	Complete	Complete	Complete	Complete	Complete
3	In Progress	2/6/03	2/13/03	3/19/03	3/24/03
4	In Progress	Complete	Complete	3/19/03	3/24/03
5	On hold pending alignment change due to Freedman Bag Company. Alignment may shift South.				
6	In Progress	3/5/03	3/12/03	3/19/03	3/24/03
7	In Progress	Complete	Complete	2/14/03	2/19/03
8	In Progress	Complete	Complete	Complete	2/19/03
9	In Progress	Complete	Complete	2/14/03	2/19/03
10	In Progress	Complete	Complete	2/14/03	2/19/03
11	In Progress	2/13/03	2/20/03	3/13/03	3/18/03
12	In Progress	2/13/03	2/20/03	3/13/03	3/18/03
13	In Progress	2/6/03	2/13/03	3/19/03	3/24/03
14	In Progress	Complete	Complete	3/26/03	3/31/03
15	In Progress	2/13/03	2/20/03	3/26/03	3/31/03
16	In Progress	3/5/03	3/12/03	3/26/03	3/31/03

## BATCH LIST

<b>1</b>	1st/Alameda
<b>2</b>	Alameda/Temple Alameda Sta. Ped North Alameda Sta. Ped South 1st/Hewitt
<b>3</b>	1st/Vignes
<b>4</b>	1st/Lorena (PD) 1st/Indiana (PD)
<b>5</b>	Ducommun/Hewitt Ducommun/Garey (PD) Ducommun/Vignes (PD) Ducommun/Center
<b>6</b>	1st/Mission 1st/Anderson 1st/Utah

<b>7</b>	Indiana Sta. Ped North Indiana/Gleason Ped Xing 3rd/Indiana (PD) 3rd/Ditman 3rd/Rowan (PD)
<b>8</b>	3rd/Gage 3rd/60 Fwy WB Ramps 3rd/Downey
<b>9</b>	3rd/Marianna (PD) 3rd/Eastern 3rd/710 SB On Ramp
<b>10</b>	3rd/Ford 3rd/McDonnell 3rd/Arizona
<b>11</b>	3rd/Mednik 3rd/Civic Center 3rd/Laverne

<b>12</b>	3rd/Driveways to Sheriff Sta 3rd/Woods/V. Corona/ Pomona/Beverly Pomona/Atlantic
<b>13</b>	3rd St./60 Fwy WB Connector 3rd St./60 Fwy Over ELRT 3rd St./710 Fwy SW Connector 3rd St. Bridge over 710 Fwy 3rd St./710 Fwy SE Connector
<b>14</b>	Commercial St. Bridge 101 Freeway Bridge Union Sta. Baggage Cart Road
<b>15</b>	1st St./Santa Fe 1st St./Myers
<b>16</b>	1st St./MTA 1st St./BNSF 1st St./UP

## FFGA APPLICATION DOCUMENT CHECKLIST

### SUPPORTING DOCUMENTS

DOCUMENT	AGENCY	TARGET DATE	STATUS/COMMENTS
Value Engineering	MTA	Complete	August 2001
Record of Decision/FONSI	FTA	Complete	June 2002
FSTIP Approval	SCAG	Complete	Included in 10/4/02 FSTIP.
Submit System Safety Program Plan to CPUC	MTA	8/02	Under review by CPUC.
Quality Management Plan Revision	MTA	8/02	FTA approved for current stage.
Real Estate Acquisition Plan Revision	MTA	8/02	FTA approved for current stage.
Before and After Study Plan	MTA	10/29/02	Submitted to FTA for review.
Spot Report (as needed)	FMO/PMO	11/02	PMO prepared recommending authorization of LONP.
Annual Certifications/ Assurances	MTA	Complete	12/18/02
Project Management Plan Revision	MTA	Complete	Submitted to PMOC 1/30/03 for review.
Financing Plan	MTA	1/03	Submit to FTA for review.
Financial Capacity Review	FMO	2/03	Submit to FTA for review.
Rail Fleet Management Plan Revision	MTA	2/14/03	MTA to submit revision addressing FTA comments.
Bus Fleet Management Plan Revision	MTA	2/14/03	MTA to submit revision addressing FTA comments.
Real Estate Acquisition Plan Revision	MTA	3/03	
Spot Report (as needed)	FMO/PMO	3/03	PMO prepared recommending authorization of LONP
Quality Management Plan Revision	MTA	4/03	
Department of Labor (13c) Certification	DOL	4/03	
Region IX to HQs FFGA Recommendation Memo	FTA	Early 4/03	
FTA letter to Congress	FTA	Late 5/03	
FTA Approval Letter to Grantee	FTA	7/03	
Interagency Agreements including CPUC Oversight (MOU)	MTA		Revisions to existing agreements in progress.
Civil Rights Program Review	MTA		
Environmental Permits & Biological Determination	TBD	TBD	TBD if needed

## FFGA APPLICATION DOCUMENTS

DOCUMENT	AGENCY	TARGET DATE	STATUS/COMMENTS
Attachment 1 – Scope of Project	MTA	2/7/03	Submit full draft package to FTA.
Attachment 1A – Project Map	MTA	2/7/03	Submit full draft package to FTA.
Attachment 2 – Project Description	MTA	2/7/03	Submit full draft package to FTA.
Attachment 3 – Baseline Cost Estimate	MTA	2/7/03	Submit full draft package to FTA.
Attachment 3A – Project Budget	MTA	2/7/03	Submit full draft package to FTA.
Attachment 4 – Baseline Schedule	MTA	2/7/03	Submit full draft package to FTA.
Attachment 5 – Schedule of Prior Grants and Related Documents	MTA	2/7/03	Submit full draft package to FTA.
Attachment 6 – Schedule of Capital New Starts Funds	MTA	2/7/03	Submit full draft package to FTA.
Attachment 7 – Measures to Mitigate Environmental Impacts	MTA	2/7/03	Submit full draft package to FTA.
Attachment 8 – Before and After Study	MTA	2/7/03	Submit full draft package to FTA.
Part I – Full Funding Grant Agreement	FTA	3/03	
Submittal of paper grant application (5309) and TEAM application (Part II – FFGA included)	MTA	3/03	
Congressional Review	Congress	6/03 – 7/03	
Review/Execution of FFGA	FTA/MTA	Early 8/03	

## CURRENT PROJECT RENDERINGS



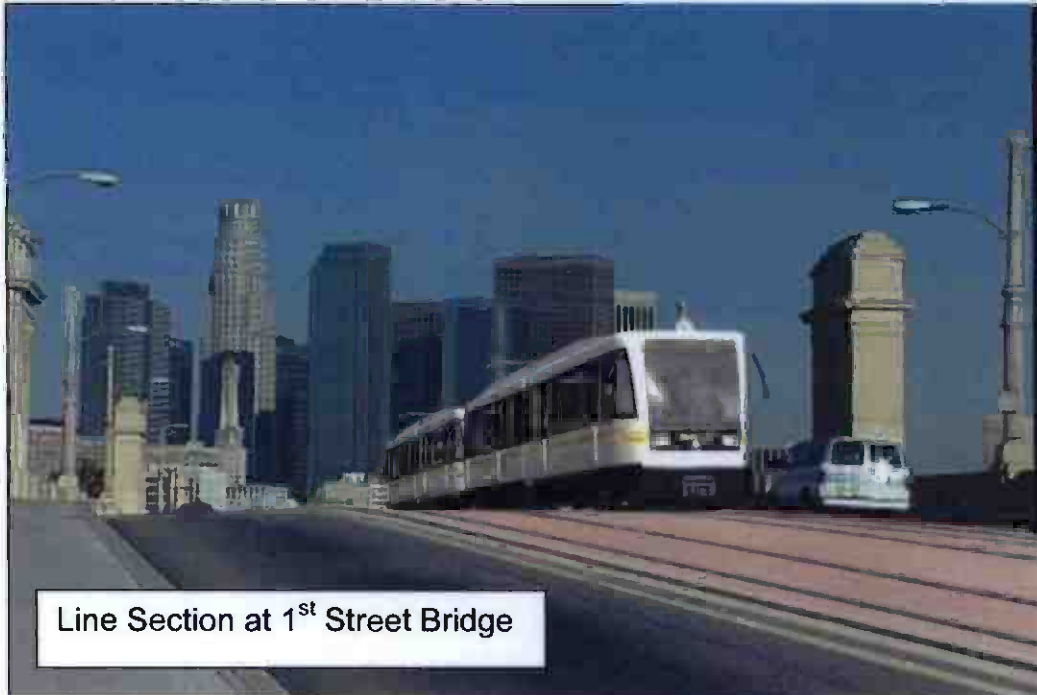
Computerized Rendering of Proposed  
Eastside Gold Line Extension  
Guideway Bridge at the 101 Freeway

## CURRENT PROJECT RENDERINGS





## CURRENT PROJECT RENDERINGS





## **APPENDIX**

### **COST AND BUDGET TERMINOLOGY**

**ESTIMATED PROJECT COSTS:** Estimated project costs are based upon the current project cost estimates that are produced during the engineering design phase.

**COMMITMENTS:** The total of actual contract awards, executed change orders or amendments, approved work orders of Master Cooperative Agreements, offers accepted for purchase of real estate, and other LACMTA actions that will result in specific expenditures at a future time.

**INCURRED COST:** The total value of work performed to date of services received, and acquired materials or properties.

**EXPENDITURES:** The total dollar amount of checks written by LACMTA's Accounting department for contractor or consultant invoices, third party invoices, staff salaries, and closing payments for escrow accounts that is reported in LACMTA's Financial Information System (FIS).

**CONSTRUCTION:** Includes guideways, yards and shops, systems equipment, stations, and vehicles.

**PROFESSIONAL SERVICES:** Includes general engineering, construction management services, consultant design support services during construction, legal counsel, and agency (MTA staff) costs.

**RIGHT-OF-WAY:** Includes real estate appraisals, purchase cost of parcels, easements, right-of-entry permits, escrow fees, and tenant relocation.

**UTILITY/AGENCY FORCE ACCOUNT:** Includes work by outside agencies and utilities in design coordination and review.

**CONTINGENCY:** A fund established at the beginning of a project to provide for anticipated but unknown additional costs that may arise during the course of the project.

**SPECIAL CONDITIONS:** Includes utilities relocation, environmental compliance and mitigation, master cooperative agreements, insurance program, artwork, systems integration testing and pre-revenue operations.

## APPENDIX

### LIST OF ACRONYMS

AFE	Authorization For Expenditure
ATC	Automatic Train Control
CADD	Computer Aided Drafting and Design
CALTRANS	California Department of Transportation
CD	Calendar Day
CM	Construction Manager
CMAC	Congestion Mitigation Air Quality
CN	Change Notice
CO	Change Order
CPM	Critical Path Method
CPUC	California Public Utilities Commission
CR	Camera Ready
CTC	California Transportation Commission
CUD	Contract Unit Description
DB	Design/Build
DBB	Design/Bid/Build
DD	Design Development
DOT	Department of Transportation
DWP	Department of Water and Power
EIR	Environmental Impact Report
EIS	Environmental Impact Statement
EPBM	Earth Pressure Balance Machine
ESP	Eastside LRT Partners
FAR	Federal Acquisition Regulation
FD	Final Design
FEIS	Final Environmental Impact Statement
FEIR	Final Environmental Impact Report
FFGA	Full Funding Grant Agreement
FIS	Financial Information System
FSEIR	Final Supplemental Environmental Impact Report
FSEIS	Final Supplemental Environmental Impact Statement
FTA	Federal Transit Administration
FTE	Full Time Equivalent
GDSR	Geotechnical Design Summary Report
IFB	Invitation for Bid
IPO	Integrated Project Office
JV	Joint Venture
LA	Los Angeles
LABOE	Los Angeles Bureau of Engineering
LACFCD	Los Angeles County Flood Control District
LACMTA	Los Angeles County Metropolitan Transportation Authority
LADOT	Los Angeles Department of Transportation

## APPENDIX

### LIST OF ACRONYMS (Continued)

LADPW	Los Angeles Department of Public Works
LADWP	Los Angeles Department of Water and Power
LAUSD	Los Angeles Unified School District
LNTP	Limited Notice To Proceed
LONP	Letter Of No Prejudice
LRT	Light Rail Transit
LRTP	Long Range Transportation Plan
LRV	Light Rail Vehicle
MIS	Major Investment Study
MPSR	Monthly Project Status Report
MTA	Metropolitan Transportation Authority
N/A	Not Applicable
NEPA	National Environmental Protection Act
NPDES	National Pollution Discharge Elimination System
NTE	Not to Exceed
NTP	Notice To Proceed
OCIP	Owner-Controlled Insurance Program
P3	Primavera Project Planner® (scheduling software)
PC	Project Control
PE	Preliminary Engineering
PEER	Permit Engineering Evaluation Report
PGL	Pasadena Gold Line
PIP	Project Implementation Plan
PM	Project Manager
PMA	Project Management Assistance
PMIP	Project Management Implementation Plan
PMOC	Project Management Oversight Consultant
PMP	Project Management Plan (manual)
P&P	Policies & Procedures
PR	Project Report
PSR	Project Study Report
QA	Quality Assurance
QAR	Quality Assurance Report
QC	Quality Control
QPSR	Quarterly Project Status Report
RAC	Review Advisory Committee
RAG	Rail Activation Group
RFC	Request For Change
RFP	Request For Proposal
ROD	Record Of Decision
ROD	Revenue Operations Date
ROM	Rough Order of Magnitude

**APPENDIX**  
**LIST OF ACRONYMS (Continued)**

ROW	Right-Of-Way
SCAQMD	Southern California Air Quality Management District
SCE	Southern California Edison
SCRRA	Southern California Regional Rail Authority
SHA	State Highway Account
SHPO	State Historic Preservation Office
SIT	System Integration Testing
SOV	Schedule Of Value
SOW	Statement Of Work
SP	Special Provision
STIP	State Transportation Improvement Program
STP	Surface Transportation Program
TBD	To Be Determined
TBM	Tunnel Boring Machine
TCRP	Traffic Congestion Relief Program
TPSS	Traction Power Substation
TRACS	Transit Automatic Control System
UFS	Universal Fare System
USDOT	U.S. Department Of Transportation
VE	Value Engineering
WBS	Work Breakdown Structure
WP	Work Package