



Los Angeles County Metropolitan Transportation Authority

Metro Gold Line Eastside Extension Monthly Project Status Report



February 2003

METRO GOLD LINE EASTSIDE EXTENSION

MONTHLY PROJECT STATUS REPORT

THE PREPARATION OF THIS DOCUMENT HAS BEEN FINANCED IN PART THROUGH A GRANT FROM THE U. S. DEPARTMENT OF TRANSPORTATION, FEDERAL TRANSIT ADMINISTRATION (FTA), UNDER THE FEDERAL TRANSIT ACT OF 1964, AS AMENDED, AND FUNDS FROM THE STATE OF CALIFORNIA.

FEBRUARY 2003

TABLE OF CONTENTS

	Page No.
Project Overview.....	1
Management Issues.....	2
Project Status	
• Project Scope.....	3
• Schedule	
○ Key Milestones Six-Month Lookahead	4
○ Project Master Schedule Critical Path.....	5
○ Critical Path Narrative	6
• Project Cost Status.....	7
• Change Control Status.....	8
• Financial/Grant Status.....	9
• Staffing.....	10
• Real Estate.....	11
• Environmental.....	12
• Community Relations.....	12
• Quality Assurance.....	12
• Safety.....	13
• Third Party.....	14-15
• CPUC Crossing.....	16
FFGA Application and Supporting Documents.....	17-18
Photographs (Project Renderings).....	19-22
Appendices.....	23-26

PROJECT OVERVIEW

The Metro Gold Line Eastside Extension Project is a six-mile, dual track light rail system with eight new stations and one station modification. The system originates at Union Station in downtown Los Angeles, where it connects with the Pasadena Gold Line, traveling generally east to Pomona and Atlantic Boulevards. The system will bridge State Route 101 Freeway and traverse the existing 1st Street Bridge over the Los Angeles River. The system will travel south on Alameda Street and then east on 1st Street with two stations at Alameda and Utah Streets. East of the Los Angeles River and 1st and Utah Streets, the alignment transitions to tunnel for approximately 1.8 miles, and continues beneath 1st Street to underground stations at 1st Street and Boyle Avenue and 1st Street and Soto Street. The alignment returns to the surface near the intersection of 1st Street and Lorena Streets, then jogs to the south, transitioning to follow 3rd Street with stations at Indiana Street, Ford Boulevard, Mednik Avenue and Pomona and Atlantic Boulevards.

Total design progress through this reporting period is 98% complete vs. 98% planned.

The camera-ready design package for Contract C0802 will be issued to Caltrans in late March 2003 for incorporation into Caltrans 101 Freeway Widening Project bid package. Ongoing project scope definition continues for Contract C0801 Stations, Trackwork and Systems. This contract will be advertised for bid in late March 2003.

Two bids were received on February 26, 2003 for Contract C0800. The bids were 36% and 46% above the Engineer's Estimate. Evaluation of the bids will occur during March.

The independent cost estimates for Contract C0801 and Contract C0802 are to be finalized within the first week of March. A final report will be issued. The estimates are required for the final FFGA application. It is anticipated that the FFGA approval will occur by August 2003.

Advanced utility relocations by the Gas Company began on February 3, 2003 at the East Portal. Commencement of other utility relocations is planned for March 2003.

Responses to the Design/Build Industry Review major comments were posted on the MTA website. A Design/Build Industry Review follow-up meeting is scheduled for March 6, 2003.

MANAGEMENT ISSUES

Ongoing Item (Date Initiated: October 2002)

FEDERAL TRANSIT ADMINISTRATION (FTA) APPROVAL OF THE LETTER OF NO PREJUDICE (LONP) FOR CERTAIN CRITICAL ITEMS

Concern/Impact

MTA is seeking authorization from the FTA to incur costs on certain critical path activities, with the understanding that these costs will become reimbursable as eligible expenses upon approval of a Full Funding Grant Agreement (FFGA). MTA is seeking approval from the FTA to proceed with these activities before the end of 2002 or risk jeopardizing the current projected Revenue Operations Date of October 2008.

Status/Action

Approval from the FTA to incur cost up to \$1.9 million and to be eligible for reimbursement for the advanced utility relocations was received on November 12, 2002. A supplemental request for an LONP was submitted to the FTA on November 27, 2002 for the remaining utility relocations, acquisition of Earth Pressure Balance Machines (EPBMs), demolition, procurement of schedule critical activities and acquisition of the light rail vehicles. A request for the remaining advance utility relocations is no longer required. In a recent update to the FFGA Guidance (Circular 5200. 1A), utility relocations can now be conducted under a pre-award authority once FTA has granted permission to enter into final design. FTA has requested that staff resubmit the most recent LONP with updated information based upon recent project events.

PROJECT SCOPE

Contract C0802 – 101 Freeway Bridge

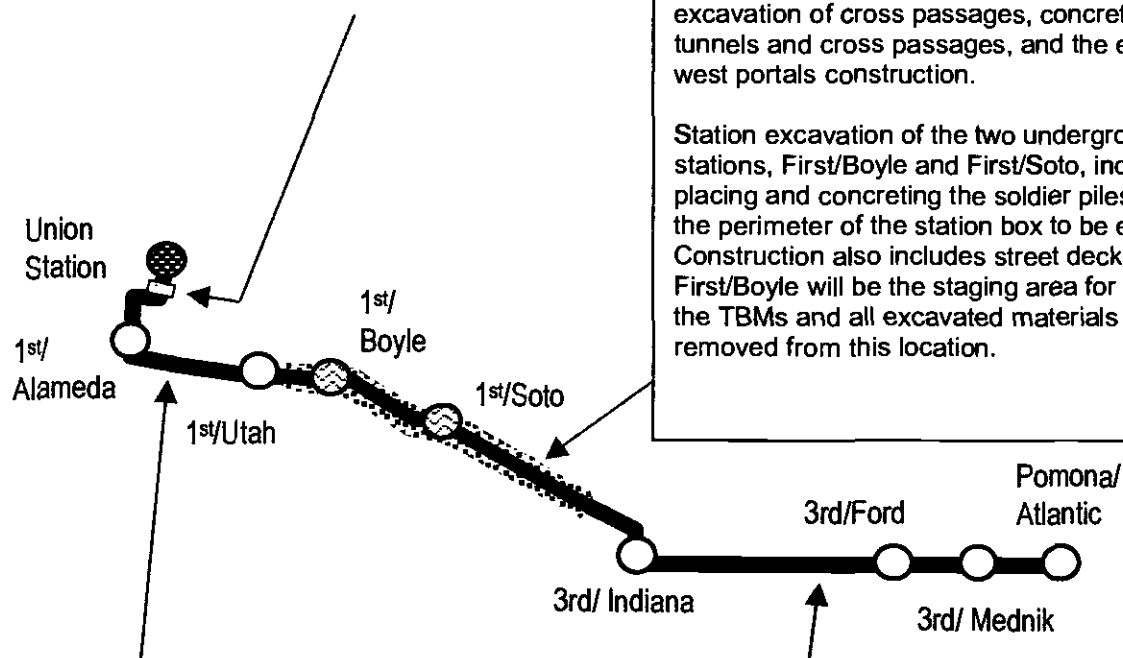
Overcrossing: The construction of the bridge will be combined with Caltrans freeway improvements project. While Caltrans will advertise and administer the construction, MTA will remain responsible for the design and construction costs of the bridge overcrossing.

Contract C0800 - Tunnel and Station

Excavation: This contract will be design/bid/build. The contractor will be selected utilizing a sealed bid, where the award will be based on the lowest priced technically qualified bid.

The start of tunnel construction is based upon the completion of final design, successful construction award and acquisition of full take real estate parcels. Construction of the 1.8 mile tunnel segment includes tunnel excavation using two Earth Pressure Balance Machines (EPBM) type, excavation of cross passages, concreting of the tunnels and cross passages, and the east and west portals construction.

Station excavation of the two underground stations, First/Boyle and First/Soto, include drilling, placing and concreting the soldier piles that line the perimeter of the station box to be excavated. Construction also includes street decking. First/Boyle will be the staging area for assembling the TBMs and all excavated materials will be removed from this location.



Contract C0801 - Stations, Trackwork, and Systems: This contract will be design/build. The contractor will be selected utilizing the two-step low bid procurement, following the guidelines set forth in the Federal Acquisition Regulations (FAR) Part 15 and requirements of California Public Utilities Code (CPUC) Section 130242.

The construction of each underground station will occur at the successful completion of the critical tunnel boring work under contract C0800. Construction of the two underground stations includes structural walls, station platforms, mezzanines, station entrances, and plazas, architectural finishes and all related mechanical and electrical work.

All six of the at-grade stations along the six-mile alignment will be constructed under this contract. This contract includes all the trackwork installation and testing for the entire alignment.

Systems installation and testing is inclusive of power systems, automatic train control, fire and emergency management, TRACS and communications systems. The contractor will be responsible for systems integration testing for the entire line segment prior to pre-revenue operations.

KEY MILESTONE SCHEDULE SIX-MONTH LOOKAHEAD

	Milestone Date	Feb-03	Mar-03	Apr-03	May-03	Jun-03	Jul-03
Commence Construction of Advanced Utility Relocations	2/3/03	△					
Bid-Due-Contract C0800 (Tunnel)	2/26/03	◆					
Camera Ready - 101 Frwy Overcrossing Final Design (Contract C0802)	3/19/03		○				
Caltrans Approve Type Selection Report (TSR) - 710 Frwy Undercrossing (C0801)	3/21/03*		△				
MTA Submit Final FFGA Application	3/24/03*		◆				
Submit Applications to CPUC for Approval-Grade Crossings (Batches 3, 4, 4A, 10, 14, 15 & 16)	3/28/03*		◆				
Caltrans Approve PSR/ PR -Tunnels under 101 Frwy (C0800)	3/31/03*		△				
Caltrans Review/Approve PS&E - Tunnel under 101 & I-5 Freeways (C0800)	3/31/03*		△				
Issue Two-Step Invitation for Bid (IFB) -C0801	3/31/03		◆				
MTA sign Agreement with LAUSD - Ramona HS Reconfiguration	3/31/03*		◆				
FTA Approval of Letter of No Prejudice (LONP)	4/4/03*			FTA			
Award Contract - Contract C0800	4/11/03			◆			
Caltrans Approve PSR/PR - 60 Freeway Undercrossing (C0801)	4/11/03			△			
Submit Applications to CPUC for Approval-Grade Crossings (Batches 5 thru 9, 11, 12, 13, 17 & 18)	4/18/03*			◆			
Notice To Proceed Contract C0800	4/28/03			◆			
Execute Contract P2550 - LRT Vehicles	5/8/03*				◆		
Bid Due (Technical & Qualification) C0801	6/9/03*					◆	
Caltrans Approve PS&E Structures and Roadway-101 Frwy Overcrossing (C0802)	7/1/03*						△



MTA Staff Milestone



Eastside LRT Partners Deliverables



Other Agencies

*

New Date

FTA

FTA Approval



MTA Board Approval

Activity Description	Part	Rev	Part	Rev
Program Preliminaries				
LONP Request & Approval	25'	23AUG02A	04APR03	
FTA Approval				
MTA Issuance of FFCA	16'	22JUL02A	24MAR03	
FTA Review and Approval of FFCA	110'	25MAR03	28AUG03	
Contract C0800 - Tunneling & Station Excavation				
Procure C0800: Tunneling & Station Excavation				
Contract C0800: IFB/Bid/Award	30'	18NOV02A	11APR03	
Main Tunnel Construction				
NTP, Mobilize, Procure EPBM's, Excavate Sta. Box	303'	28APR03	28JUN04	
Tunneling	350'	28JUN04	04NOV05	
Tunnel Concrete/Fire Protection/Drainage	136'	31OCT05	10MAY06	
Punchlist	52'	28MAY06	08AUG06	
Secondary Structure				
Cut/Cover: Grids 1 & 2 Area	143'	07NOV05	28MAY06	
Contract C0801 - Stations/Trackwork/Systems				
Underground Station Construction				
1st/Soto Station Major Structural Construction	326'	11MAY06	15AUG07	
1st/Soto Station Elec/Mech/Finish Work	135'	15MAY07	18NOV07	
Systems				
Systems Procurement/Installation & Local Testing	733'	14FEB05	14DEC07	
MTA Startup Operations				
Startup Operations				
System Integration, Testing and Pre-Revenue Ops.	215'	17DEC07	15OCT08	
Revenue Operations Date	0		15OCT08	

Start Date
17APR00

Finish Date
15OCT08

Start Date
01MAR03

Run Date
12MAR03 13:47

Early Bar
[Redacted]

Progress Bar
[Redacted]

Critical Activity
[Redacted]

Sheet 1 of 1

METRO GOLD LINE EASTSIDE EXTENSION

Critical Path Schedule

Current Forecast

LAC MTA Construction

Revision
01MAR03 February 2003 Schedule Update

Date
01MAR03

Checked
[Redacted]

Approved
[Redacted]

© Primavera Systems, Inc.

CRITICAL PATH NARRATIVE

After completion in November of final design for the tunneling contract (Contract C0800), the critical path moved into the bid and award period. The Contract C0800 Invitation For Bid (IFB) was advertised on December 2, 2002 and bids were received on February 26, 2003.

Prior to awarding Contract C0800, certain key critical construction activities and procurement need to occur prior to receiving a Full Funding Grant Agreement (FFGA). FTA approved MTA's request for Letter of No Prejudice (LONP) for preliminary utility relocations (\$1.9M) on November 12, 2002.

A supplemental request for LONP (totaling \$154.4M) was submitted to FTA on November 27, 2002 for certain critical activities required during early construction of Contract C0800. These activities include acquisition of Earth Pressure Balance Machines (EPBMs) and procurement of excavation support systems. Acquisition of the light rail vehicles through Contract P2550 was also requested in order to secure a lower cost per vehicle as part of a base buy of vehicles for the MTA. It is expected that the FTA will approve this LONP by April 4, 2003.

Upon the issuance of Notice To Proceed for Contract C0800, there will be a 14-month lead time for the procurement of two Earth Pressure Balance Machines (EPBMs). Concurrent with the EPBM procurement period, the project will proceed with mobilization, pile installation, and station box excavations. The station box excavations are scheduled to complete prior to the EPBM delivery.

The critical path continues with EPBMs assemblies, excavation of both tunnels, excavation of crosspassages, and tunnel invert and walkway construction. The critical path then follows First/Soto underground station construction (Contract C0801).

The systems equipment installation and local testing is the last stage of the critical path prior to entering the final test stage where systems integration testing and pre-revenue operations are conducted.

Based on the updated schedule, the Revenue Operations Date (ROD) is anticipated in late 2008.

PROJECT COST STATUS

In \$ Million

Description	Previous Estimated Project Cost	Current Estimated Project Cost	Variance	Commitments	Expenditures
Guideways	209.4	209.4	0.0	0.0	0.0
Yards & Shops	6.3	6.3	0.0	0.0	0.0
Systems/Equipment	67.5	67.5	0.0	0.0	0.0
Stations	106.5	106.5	0.0	0.0	0.0
Vehicles	115.2	115.2	0.0	0.0	0.0
Special Conditions	89.9	89.9	0.0	11.3	0.6
Right-of-Way	42.2	42.2	0.0	28.0	7.7
Professional Services	172.9	172.9	0.0	49.3	37.6
Contingency	102.8	102.8	0.0	0.0	0.0
TOTAL	912.7	912.7	0.0	88.7	45.9

The Current Estimated Project Cost remains unchanged at \$912.7 million. Even though there are a few line items in which cost modifications are known, the total project cost will remain at the current level until March 2003. In April 2003, staff will submit the final FFGA application that will reflect all cost modifications known to date, plus reflect the independent cost estimates for Contracts C0801 and C0802 and the recommended award amount for Contract C0800.

The items known to date, that will be affected are as follows:

- Increases to Real Estate Property Acquisitions
- Elimination of bus procurement from the project
- Contract P2550 Procurement of Light Rail Vehicles, reduction in the required number of vehicles and potential reduction in cost per vehicle based on the apparent low bid price which is subject to the completion of bid evaluation and award
- Increase to the Non-Revenue Connectors and Yards & Shops based on the latest design. To date, this increase will not affect the overall project forecast of \$912.7 million.

CHANGE CONTROL STATUS

	A	B		C		D=A+B+C	E		F=D+E
	Approved					Obligated	Potential		
Description	Award Amount	Executed Changes		LNTPs (NTE)		Total Approved Amount	Pending		Total Potential Value
		#	\$	#	\$		#	\$	
Engineering Design Services	18,929,502	9	9,642,668	0	0	28,572,170	3	18,450,000	47,022,170
Environmental Services	448,635	2	183,517	4	57,000	689,152	0	88,000	777,152
Design/Build Advisory Panel Services	1,059,840	0	0	0	0	1,059,840	0	0	1,059,840
Project Management Assistance Support	166,366	6	3,256,556	0	0	3,422,922	0	0	3,422,922
TOTAL	20,604,343	17	13,082,741	4	57,000	33,744,084	3	18,538,000	52,282,084

FINANCIAL/GRANT STATUS

FEBRUARY 2003

STATUS OF FUNDS BY SOURCE

SOURCE	(B) TOTAL FUNDS ANTICIPATED	(C) TOTAL FUNDS AVAILABLE	(D) (D/B) COMMITMENTS		(E) (E/B) EXPENDITURES		in \$ millions (F) (F/B) BILLED to FUNDING SOURCE	
			\$	%	\$	%	\$	%
FEDERAL - SECTION 5309 NEW START	490.7	5.9	5.9	1%	5.9	1%	5.9	1%
FED - SECTION 5309 FIXED GUIDEWAY	38.9			0%		0%		0%
FEDERAL - CMAQ	4.4			0%		0%		0%
STATE TCRP	45.0	45.0	45.0	100%	21.4	48%	21.4	48%
STATE REGIONAL IMPROVEMENT PROG	196.2	5.2	37.8	19%	5.2	3%	5.2	3%
PROPOSITION A 35% RAIL CAPITAL	127.4			0%		0%		0%
LEASE REVENUES	10.1			0%		0%		0%
UNBILLED ACCRUALS		13.3			13.3			
TOTAL	912.7	69.4	88.7	10%	45.9	5%	32.5	4%

(1) Based on August 2002 Section 5309 New Start Report

NOTE: EXPENDITURES ARE CUMULATIVE THROUGH JANUARY 2003.

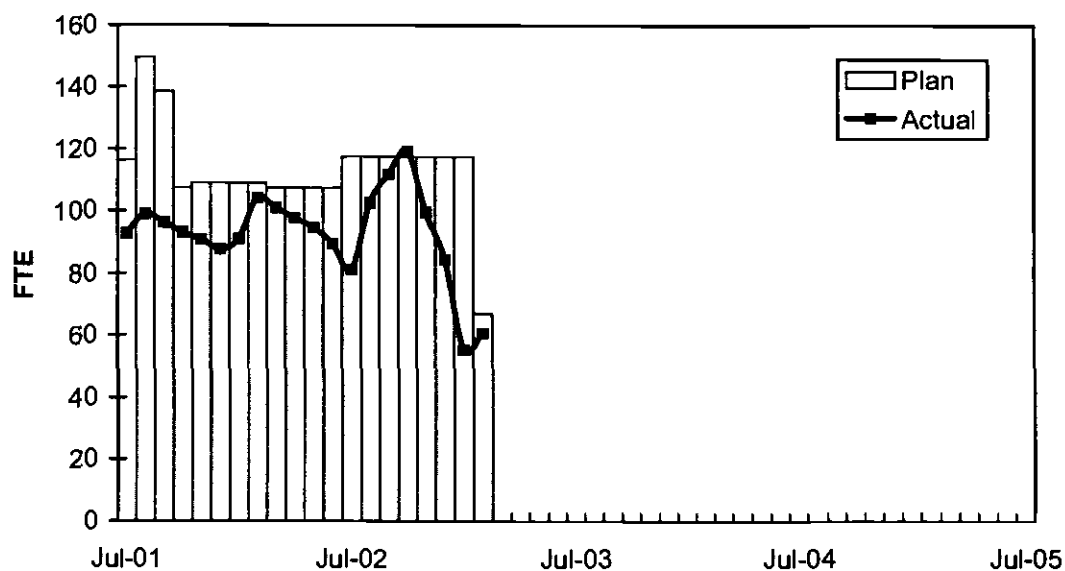
STATUS OF FUNDS ANTICIPATED

FEDERAL SECTION 5309: MTA submitted a grant amendment for \$7,425,098 in March 2002. Grant amendment was approved on September 19, 2002. Funds are available for draw down. MTA plans to submit a grant application for \$3,934,330 in April 2003.

STATE TCRP: In April 2002, the CTC approved an MTA application and allocation request for \$25.5M of State TCRP funds for final design, right-of-way, and construction activities. Funds are available for draw down. At the February 2003 CTC Meeting, the CTC noticed the MTA STIP amendment request to convert \$191 million of unallocated TCRP funds to STIP funds. CTC action is expected to take place on April 3, 2003.

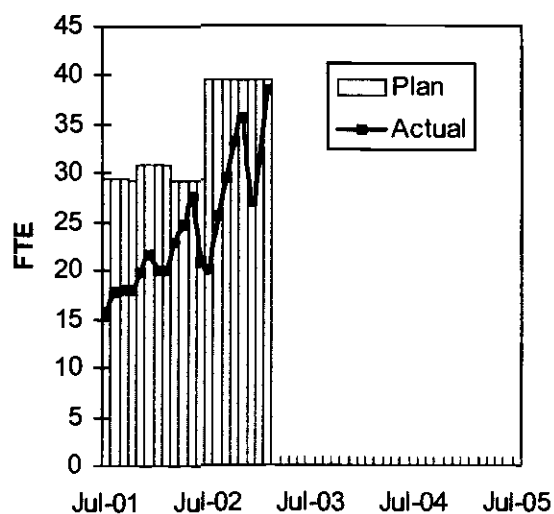
STAFFING STATUS

TOTAL PROJECT STAFFING

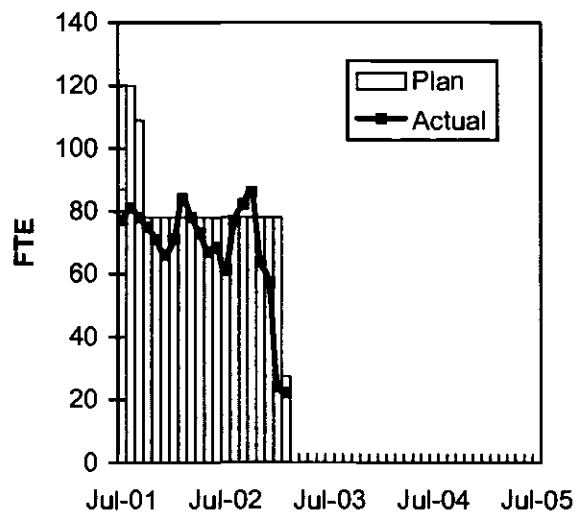


Staffing levels coincide with the conclusion of the majority of design activities and the bid and award period for Contract C0800. Staffing requirements are considerably less during this period.

AGENCY STAFFING



ELRT PARTNERS



REAL ESTATE STATUS

- For C0800, the tunnel portion of the alignment, 43 parcels are required for acquisition (10 full takes, 18 sub-surface easements, 6 part takes, 5 sub-surface easements/building protection, 2 building protections, 1 street vacation and 1 permit from Caltrans which will be coordinated through MTA's Third Party Coordination).
- For C0801, the at-grade portion of the alignment, 33 parcels are required for acquisition (20 full takes, 8 partial takes, 3 street vacations, and 2 permits required from Caltrans which will be coordinated through the MTA's Third Party Coordination office). Nine parcels have been identified for the proposed Ramona High School site reconfiguration.
- For C0802, 3 parcels are required (2 surface easements and 1 full take parcel).
- Thirty-three parcels have been certified, fourteen for C0800, seventeen for C0801 and two for C0802. Real Estate completed the appraisals and Phase 1 due diligence environmental work on required parcels located on First/Boyle and First/Soto areas. Offers have been made 13 property owners. Ten parcels have been acquired, seven have closed escrow and three are in escrow. Three parcels are in condemnation.

REAL ESTATE ACQUISITION SCHEDULE SUMMARY

Number of Parcels	Required	Acquired	On Schedule	Behind Schedule	
				Number	Avg. Calendar Days
This Period	79	7	13	0	0
Last Period	79	0	79	0	0

REAL ESTATE STATUS TO DATE BY CONTRACT

Actual Parcels

Contract	No. of Parcels	Certified	Just Comp Approved	Offers Made	Agreements Signed	Condemnation	Parcels Available	Parcels projected to be unavailable by need date
C0800	43	14	10	11	6	3	3	0
C0801	33	17	5	2	5	0	4	0
C0802	3	2	0	0	0	0	0	0
TOTAL	79	33	15	13	11	3	7	0
Last Period Total	79	28	11	11	4	0	0	0

ENVIRONMENTAL STATUS

- Provided copies of the groundwater treatment unit specifications and CEQA documents to the Regional Water Quality Control Board.
- Continued coordination of the Stormwater Pollution Prevention Plan with Caltrans.
- Continued coordination with the City of Los Angeles Bureau of Sanitation for the Industrial Waste Water Permit.

COMMUNITY RELATIONS STATUS

- Coordinated public outreach events with community representatives to facilitate public interest in the Metro Gold Line Eastside Extension Project.
- Conducted meetings with business owners to discuss construction impact mitigation.
- Continued education campaign on advanced utility relocation.
- Continued coordination of pre-construction survey activities with Pinnacle One.

QUALITY ASSURANCE STATUS

- Conducted surveillance S2003-44 Eastside Partners design review and quality assurance verification of Addendum 2 design documents for C0800. Results found the Eastside Partners were in compliance with their Quality Procedures for design review.

SAFETY STATUS

- Participated in bi-weekly progress meetings with Construction Management to discuss safety related issues and construction schedule.
- Participated in the bid evaluation process for C0800.
- Reviewed and evaluated contractor's safety program for C0800.

THIRD PARTY AGREEMENT STATUS

Third Party	Type of Agreement	Construction Need Date	Forecast Execution Date	Status/ Comments
City of Los Angeles	Amendment	4/16/03	12/23/02	Fully executed on 12/23/02.
Los Angeles County	Master	7/03	4/03	Expected to go to MTA Board in late March. Full execution may take 1-2 months.
Caltrans (All Projects)	Master	4/16/03	4/03	MTA Board asked for provisions on delay reimbursement which is being negotiated. Expected to go to the MTA Board in late March. Full execution may take 1-2 months.
Caltrans (101)	Design	5/03	4/03	Caltrans submitted 2 nd draft to MTA and comments were transmitted to Caltrans. Expected to go to the MTA Board in late March. Full execution may take 1-2 months.
Caltrans (101)	Construction	5/03	4/03	Expected to go to the MTA Board in late March. Full execution may take 1-2 months.
Caltrans (101)	Maintenance	6/07	1/04	Initial negotiation meeting with Caltrans on 1/9/03 resulted in MTA's recommendation to use the existing agreement with a similar San Diego system. The San Diego agreement was forwarded to MTA on 1/29/03. Awaiting draft from Caltrans.
LADWP (Water)	Amendment	5/03	5/03	Draft amendment submitted. Awaiting LADWP concurrence to use existing MCA until an amendment is executed.
LADWP (Power)	Amendment	5/03	5/03	Draft amendment submitted. LADWP agreed to use the existing MCA until an amendment is executed.
So. Cal. Edison Co.	Amendment	7/03	6/03	Draft amendment submitted.
The Gas Company	Amendment	5/03	6/03	The Gas Co. has been and will continue to work under previous agreement until an amendment is executed.
Pacific Bell	Amendment	5/03	5/03	The County Counsel has discussed the agreement with Pac Bell and another draft, with agreed upon comments incorporated was sent on 2/4/03.
Adelphia Cable Company	Amendment	5/03	5/03	Draft amendment submitted. Awaiting Adelphia concurrence to use existing MCA until an amendment is executed.
California Water Service Company	Master	6/03	5/03	Legal is reviewing the draft submitted on 2/19/03.
L.A. County Sanitation Districts	Amendment	6/03	8/03	Draft amendment was sent to LAC Sanitation on 2/25/03.
MCI Worldcom	Amendment	6/03	6/03	Draft amendment submitted.
Metropolitan Water District	Amendment	5/03	4/03	1/17/03 meeting resulted in using the existing agreement.
Verizon Wireless	Amendment	8/03	803	Facilities are now shown as being impacted by Eastside Construction. An amendment is being drafted.

THIRD PARTY AGREEMENT STATUS (Continued)

Third Party	Type of Agreement	Construction Need Date	Forecast Execution Date	Status/ Comments
AT & T Local Services	Amendment	8/03	8/03	Facilities are now shown as being impacted by Eastside Construction. An amendment is being drafted.
GST	N/A			Facilities are not impacted by Eastside Construction
Exxon Mobil Oil Company	N/A			Facilities are not impacted by Eastside Construction
Pacific Pipeline Company	N/A			Facilities are not impacted by Eastside Construction
Kinder Morgan Pipeline Company	N/A			Facilities are not impacted by Eastside Construction
Tosco Refining Company	N/A			Facilities are not impacted by Eastside Construction
Equilon Pipeline Company	N/A			Facilities are not impacted by Eastside Construction
Level 3 Communications	N/A			Facilities are not impacted by Eastside Construction
Broadwing Communications	N/A			Facilities are not impacted by Eastside Construction
Eller Media	N/A			Facilities are not impacted by Eastside Construction
Qwest-SP Telecom	N/A			Facilities are not impacted by Eastside Construction

CPUC CROSSING SUMMARY

Batch	Status	Initial Package Submittal to MTA	Field Diagnostic Meeting	Revised Drawings Due to MTA	Draft Write-up to MTA	Draft Package Submittal to Agencies	Final Package Submittal to PUC
1	Complete	8/5/02	8/12/02	8/26/02	9/6/02	9/6/02	9/6/02
2	Complete	10/4/02	10/11/02	10/25/02	11/6/02	11/22/02	11/22/02
3	In Progress	2/6/03	2/27/03	3/10/03	1/27/03	3/12/03	3/19/03
4	In Progress	12/14/02	1/15/03	1/29/03	11/13/02	3/7/03	3/11/03
4A	In Progress	1/24/03	1/29/03	3/14/03	2/7/03	3/19/03	3/26/03
5	In Progress	3/19/03	3/26/03	4/9/03	2/28/03	4/11/03	4/18/03
6	In Progress	3/19/03	3/26/03	4/9/03	2/7/03	4/11/03	4/18/03
7	In Progress	12/11/02	12/16/02	3/20/03	2/7/03	3/27/03	4/3/03
8	In Progress	11/26/02	12/18/02	3/20/03	11/15/02	3/27/03	4/3/03
9	In Progress	1/20/03	1/29/03	3/20/03	11/22/02	3/27/03	4/3/03
10	In Progress	12/11/03	12/16/02	3/10/03	11/22/02	3/17/03	3/24/03
11	In Progress	2/13/03	2/27/03	3/27/03	12/6/02	4/3/03	4/10/03
12	In Progress	2/13/03	2/27/03	3/27/03	12/13/02	4/3/03	4/10/03
13	In Progress	2/6/03	2/20/03	3/31/03	2/21/03	4/7/03	4/17/03
14	In Progress	1/8/03	1/15/03	3/14/03	11/12/02	3/19/03	3/26/03
15	In Progress	2/26/03	N/A	N/A	2/21/03	2/21/03	3/28/03
16	In Progress	2/26/03	N/A	N/A	2/28/03	2/28/03	3/28/03
17	In Progress	1/8/03	1/15/03	N/A	2/14/03	3/27/03	4/3/03
18	In Progress	1/8/03	1/15/03	3/20/03	2/14/03	3/27/03	4/3/03
Agency Responsible		ELRTP	MTA	ELRTP	ELRTP	MTA	MTA

* Schedule assumes the following:

Drawings from Eastside LRT Partners do not require corrections or revisions

City of L.A. Traffic Drawings do not require corrections or revisions

Submission to Agencies will evoke additional comments and revisions

Shading : Status Complete

Batch Descriptions and Order of Submission to PUC			
1	1st / Alameda	15	1st / Santa Fe
2	Alameda / Temple		1st / Myers
	1st / Hewitt	16	1st / MTA
	Ped Crossings @ 1st / Alameda Station		1st / BNSF
4	1st / Lorena		1st / Union Pacific
3	1st / Vignes	11	3rd / Mednik
10	3rd / Ford		3rd / Civic Center Drive
	3rd / McDonnell		3rd / La Verne
	3rd / Arizona	12	3rd / Driveways to Sheriff's Station
4A	1st / Indiana		3rd / Wood / Via Corona / Pomona / Beverly
	3rd / Indiana		Pomona/Atlantic
	Indiana / Gleason Pedestrian Crossing	13	3rd / 60 Fwy WB Connector
14	Union Station Service Road		3rd / 60 Fwy over ELRT
7	3rd / Diltman		3rd / 710 Fwy SW Connector
	3rd / Rowan		3rd / Bridge over 710 Fwy
8	3rd / Gage		3rd / 710 Fwy SE Connector
	3rd / 60 Fwy WB Ramps	5	Ducommun / Hewitt
	3rd / Downey		Ducommun / Garey
9	3rd / Marianna		Ducommun / Vignes
	3rd / Eastern		Ducommun / Center
	3rd / 710 SB On-Ramp	6	1st / Mission
17	US 101 Fwy Overcrossing		1st / Anderson
18	Commercial Street Overcrossing		1st / Clarence
			1st / Utah

FFGA APPLICATION DOCUMENT CHECKLIST

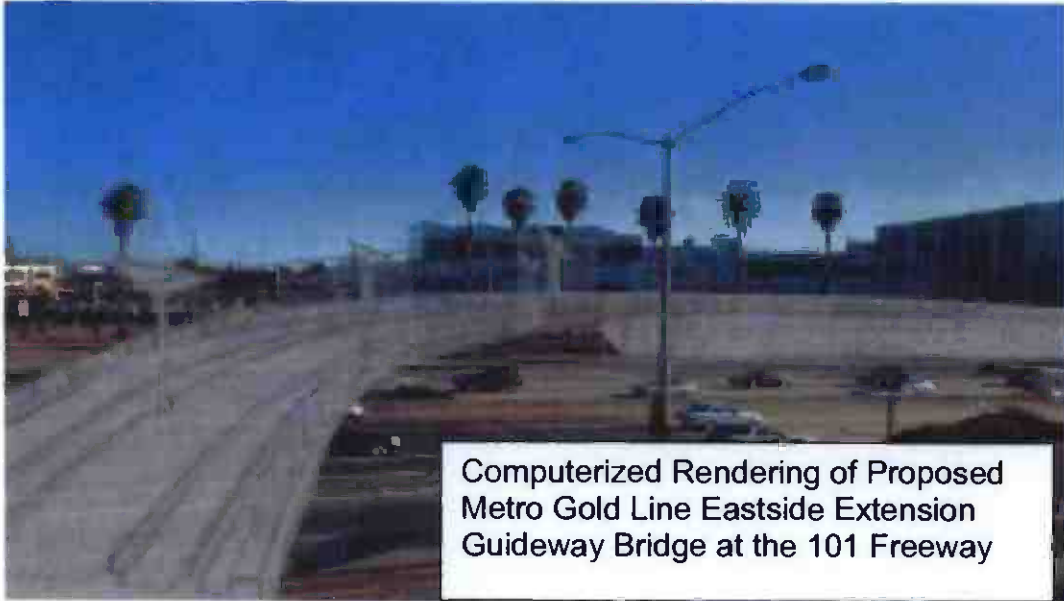
SUPPORTING DOCUMENTS

DOCUMENT	AGENCY	TARGET DATE	STATUS/COMMENTS
Value Engineering	MTA	Complete	August 2001
Record of Decision/FONSI	FTA	Complete	June 2002
FSTIP Approval	SCAG	Complete	Included in 10/4/02 FSTIP.
Annual Certifications/ Assurances	MTA	Complete	12/18/02
Quality Management Plan	MTA	8/02	FTA approved for current stage.
Before and After Study Plan	MTA	10/29/02	Waiting for FTA comments.
Financing Plan	MTA	2/7/03	Submitted to FTA for review.
Rail Fleet Management Plan	MTA	2/14/03	Submitted to FTA for review.
Bus Fleet Management Plan	MTA	2/28/03	Submitted to FTA for review.
Project Management Plan	MTA	3/03	Resubmit to FTA with comments addressed.
Real Estate Acquisition Plan	MTA	3/03	Submit detailed plan for review.
Risk Assessment	MTA	3/03	
Civil Rights Program Review	MTA	4/03	Pending grant submission in TEAM
Financial Capacity Review	FMO	4/03	FMO Consultant has begun review.
Spot Report (as needed)	FMO/PMO	4/03	PMO has begun preparing draft.
Department of Labor (13c) Certification	DOL	4/03	
Region IX to HQ FFGA Recommendation Memo	FTA	5/03	
Submit System Safety Program Plan to CPUC	MTA	5/31/03	Completed 25 recommendations to date. Still need to address 7 items.
FTA letter to Congress	FTA	6/03	
FTA Approval Letter to Grantee	FTA	8/03	
Interagency Agreements including CPUC Oversight (MOU)	MTA		Revisions to existing agreements in progress.
Environmental Permits & Biological Determination	TBD	TBD	TBD if needed.

FFGA APPLICATION DOCUMENTS

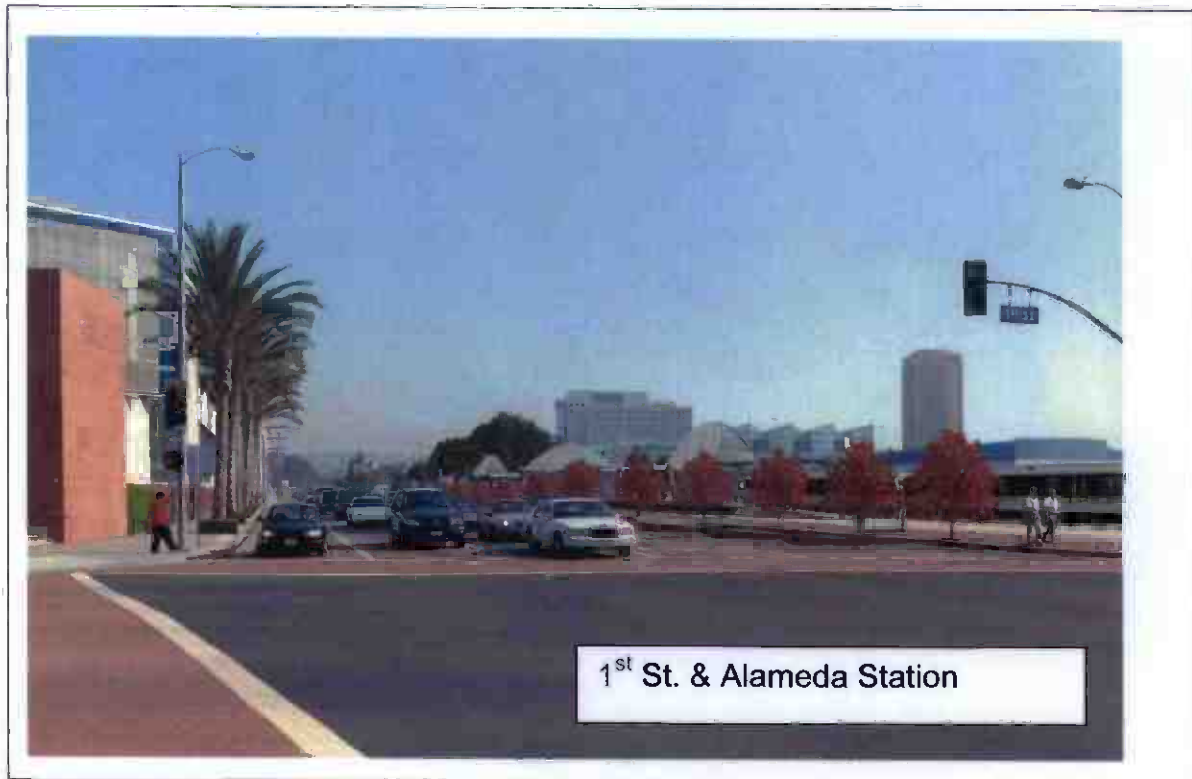
DOCUMENT	AGENCY	TARGET DATE	STATUS/COMMENTS
Attachment 1 – Scope of Project	MTA	2/7/03	Submitted draft package to FTA.
Attachment 1A – Project Map	MTA	2/7/03	Submitted draft package to FTA.
Attachment 2 – Project Description	MTA	2/7/03	Submitted draft package to FTA.
Attachment 3 – Baseline Cost Estimate	MTA	2/7/03	Submitted draft package to FTA.
Attachment 3A – Project Budget	MTA	2/7/03	Submitted draft package to FTA.
Attachment 4 – Baseline Schedule	MTA	2/7/03	Submitted draft package to FTA.
Attachment 5 – Schedule of Prior Grants and Related Documents	MTA	2/7/03	Submitted draft package to FTA.
Attachment 6 – Schedule of Capital New Starts Funds	MTA	2/7/03	Submitted draft package to FTA.
Attachment 7 – Measures to Mitigate Environmental Impacts	MTA	2/7/03	Submitted draft package to FTA.
Attachment 8 – Before and After Study	MTA	2/7/03	Submitted draft package to FTA.
Submittal of paper grant application (5309) and TEAM application (Part II – FFGA included)	MTA	3/03	
Part I – Full Funding Grant Agreement	FTA	5/03	Submit to HQ for review.
Congressional Review	Congress	7/03 – 8/03	
Review/Execution of FFGA	FTA/MTA	9/03	

CURRENT PROJECT RENDERINGS

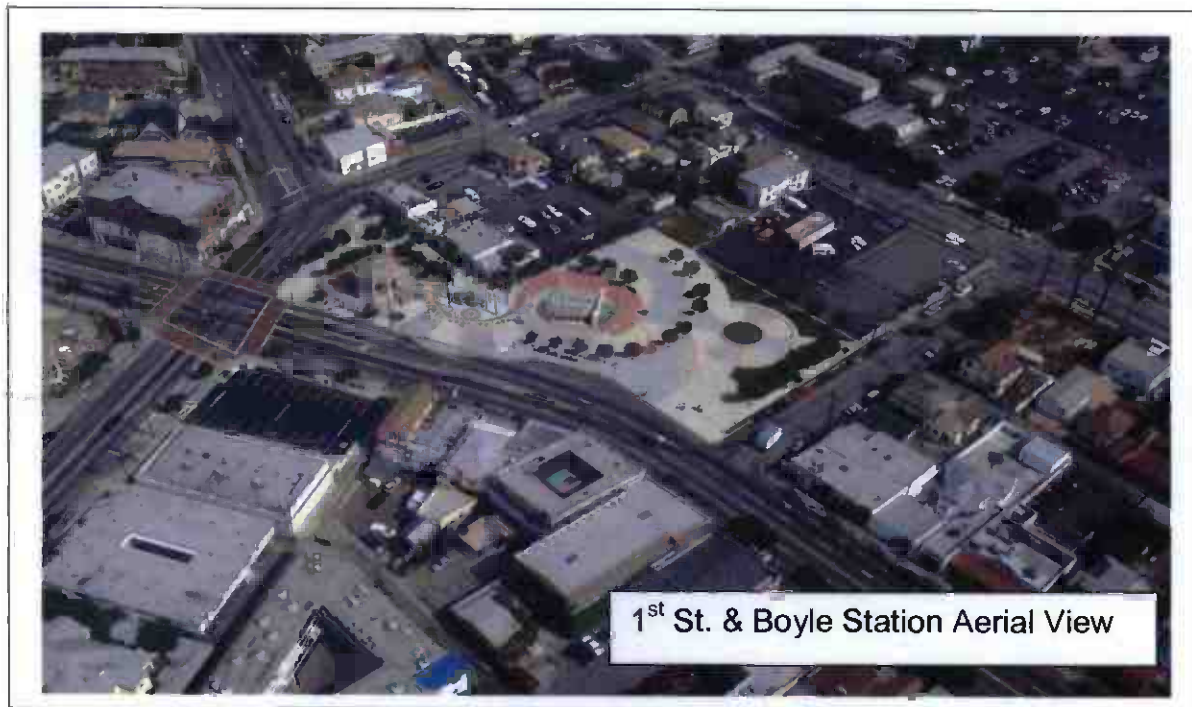
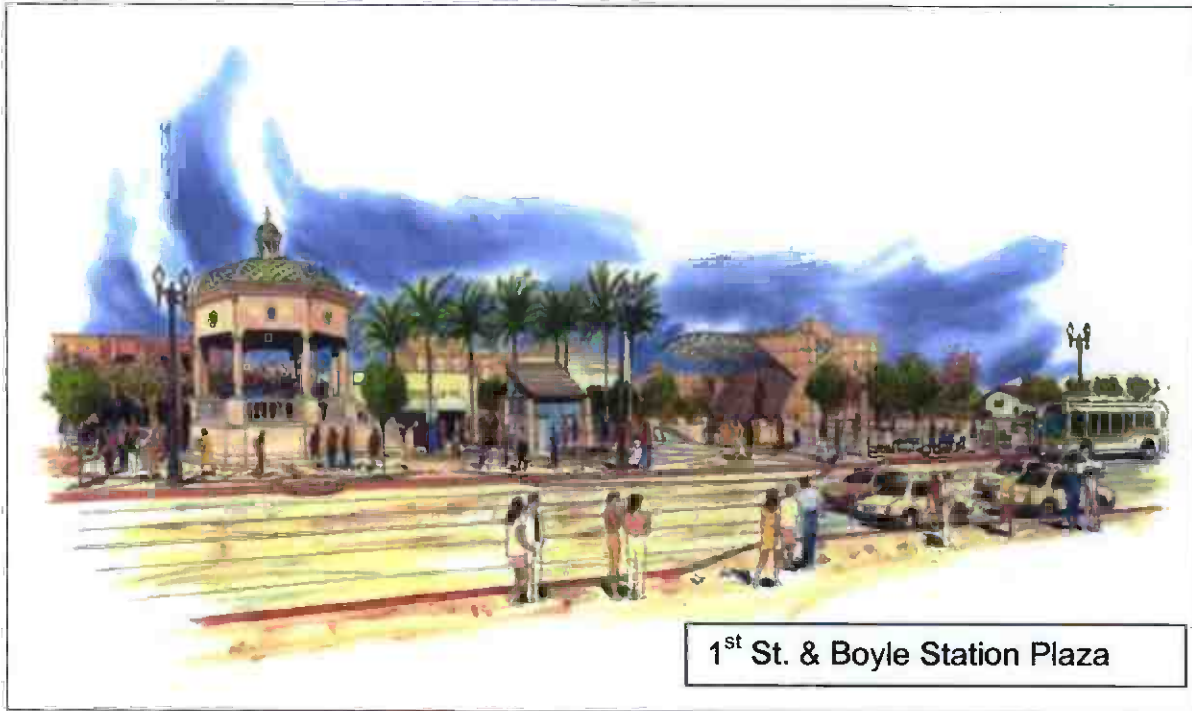


Computerized Rendering of Proposed
Metro Gold Line Eastside Extension
Guideway Bridge at the 101 Freeway

CURRENT PROJECT RENDERINGS



CURRENT PROJECT RENDERINGS



CURRENT PROJECT RENDERINGS



APPENDIX

COST AND BUDGET TERMINOLOGY

ESTIMATED PROJECT COSTS: Estimated project costs are based upon the current project cost estimates that are produced during the engineering design phase.

COMMITMENTS: The total of actual contract awards, executed change orders or amendments, approved work orders of Master Cooperative Agreements, offers accepted for purchase of real estate, and other LACMTA actions that will result in specific expenditures at a future time.

INCURRED COST: The total value of work performed to date of services received, and acquired materials or properties.

EXPENDITURES: The total dollar amount of checks written by LACMTA's Accounting department for contractor or consultant invoices, third party invoices, staff salaries, and closing payments for escrow accounts that is reported in LACMTA's Financial Information System (FIS).

CONSTRUCTION: Includes guideways, yards and shops, systems equipment, stations, and vehicles.

PROFESSIONAL SERVICES: Includes general engineering, construction management services, consultant design support services during construction, legal counsel, and agency (MTA staff) costs.

RIGHT-OF-WAY: Includes real estate appraisals, purchase cost of parcels, easements, right-of-entry permits, escrow fees, and tenant relocation.

UTILITY/AGENCY FORCE ACCOUNT: Includes work by outside agencies and utilities in design coordination and review.

CONTINGENCY: A fund established at the beginning of a project to provide for anticipated but unknown additional costs that may arise during the course of the project.

SPECIAL CONDITIONS: Includes utilities relocation, environmental compliance and mitigation, master cooperative agreements, insurance program, artwork, systems integration testing and pre-revenue operations.

APPENDIX

LIST OF ACRONYMS

AFE	Authorization For Expenditure
ATC	Automatic Train Control
CADD	Computer Aided Drafting and Design
CALTRANS	California Department of Transportation
CD	Calendar Day
CM	Construction Manager
CMAC	Congestion Mitigation Air Quality
CN	Change Notice
CO	Change Order
CPM	Critical Path Method
CPUC	California Public Utilities Commission
CR	Camera Ready
CTC	California Transportation Commission
CUD	Contract Unit Description
DB	Design/Build
DBB	Design/Bid/Build
DD	Design Development
DOT	Department of Transportation
DWP	Department of Water and Power
EIR	Environmental Impact Report
EIS	Environmental Impact Statement
EPBM	Earth Pressure Balance Machine
ESP	Eastside LRT Partners
FAR	Federal Acquisition Regulation
FD	Final Design
FEIS	Final Environmental Impact Statement
FEIR	Final Environmental Impact Report
FFGA	Full Funding Grant Agreement
FIS	Financial Information System
FSEIR	Final Supplemental Environmental Impact Report
FSEIS	Final Supplemental Environmental Impact Statement
FTA	Federal Transit Administration
FTE	Full Time Equivalent
GDSR	Geotechnical Design Summary Report
IFB	Invitation for Bid
IPO	Integrated Project Office
JV	Joint Venture
LA	Los Angeles
LABOE	Los Angeles Bureau of Engineering
LACFCD	Los Angeles County Flood Control District
LACMTA	Los Angeles County Metropolitan Transportation Authority
LADOT	Los Angeles Department of Transportation

APPENDIX

LIST OF ACRONYMS (Continued)

LADPW	Los Angeles Department of Public Works
LADWP	Los Angeles Department of Water and Power
LAUSD	Los Angeles Unified School District
LNTP	Limited Notice To Proceed
LONP	Letter Of No Prejudice
LRT	Light Rail Transit
LRTP	Long Range Transportation Plan
LRV	Light Rail Vehicle
MIS	Major Investment Study
MPSR	Monthly Project Status Report
MTA	Metropolitan Transportation Authority
N/A	Not Applicable
NEPA	National Environmental Protection Act
NPDES	National Pollution Discharge Elimination System
NTE	Not to Exceed
NTP	Notice To Proceed
OCIP	Owner-Controlled Insurance Program
P3	Primavera Project Planner® (scheduling software)
PC	Project Control
PE	Preliminary Engineering
PEER	Permit Engineering Evaluation Report
PGL	Pasadena Gold Line
PIP	Project Implementation Plan
PM	Project Manager
PMA	Project Management Assistance
PMIP	Project Management Implementation Plan
PMOC	Project Management Oversight Consultant
PMP	Project Management Plan (manual)
P&P	Policies & Procedures
PR	Project Report
PSR	Project Study Report
QA	Quality Assurance
QAR	Quality Assurance Report
QC	Quality Control
QPSR	Quarterly Project Status Report
RAC	Review Advisory Committee
RAG	Rail Activation Group
RFC	Request For Change
RFP	Request For Proposal
ROD	Record Of Decision
ROD	Revenue Operations Date
ROM	Rough Order of Magnitude

APPENDIX
LIST OF ACRONYMS (Continued)

ROW	Right-Of-Way
SCAQMD	Southern California Air Quality Management District
SCE	Southern California Edison
SCRRA	Southern California Regional Rail Authority
SHA	State Highway Account
SHPO	State Historic Preservation Office
SIT	System Integration Testing
SOV	Schedule Of Value
SOW	Statement Of Work
SP	Special Provision
STIP	State Transportation Improvement Program
STP	Surface Transportation Program
TBD	To Be Determined
TBM	Tunnel Boring Machine
TCRP	Traffic Congestion Relief Program
TPSS	Traction Power Substation
TRACS	Transit Automatic Control System
UFS	Universal Fare System
USDOT	U.S. Department Of Transportation
VE	Value Engineering
WBS	Work Breakdown Structure
WP	Work Package