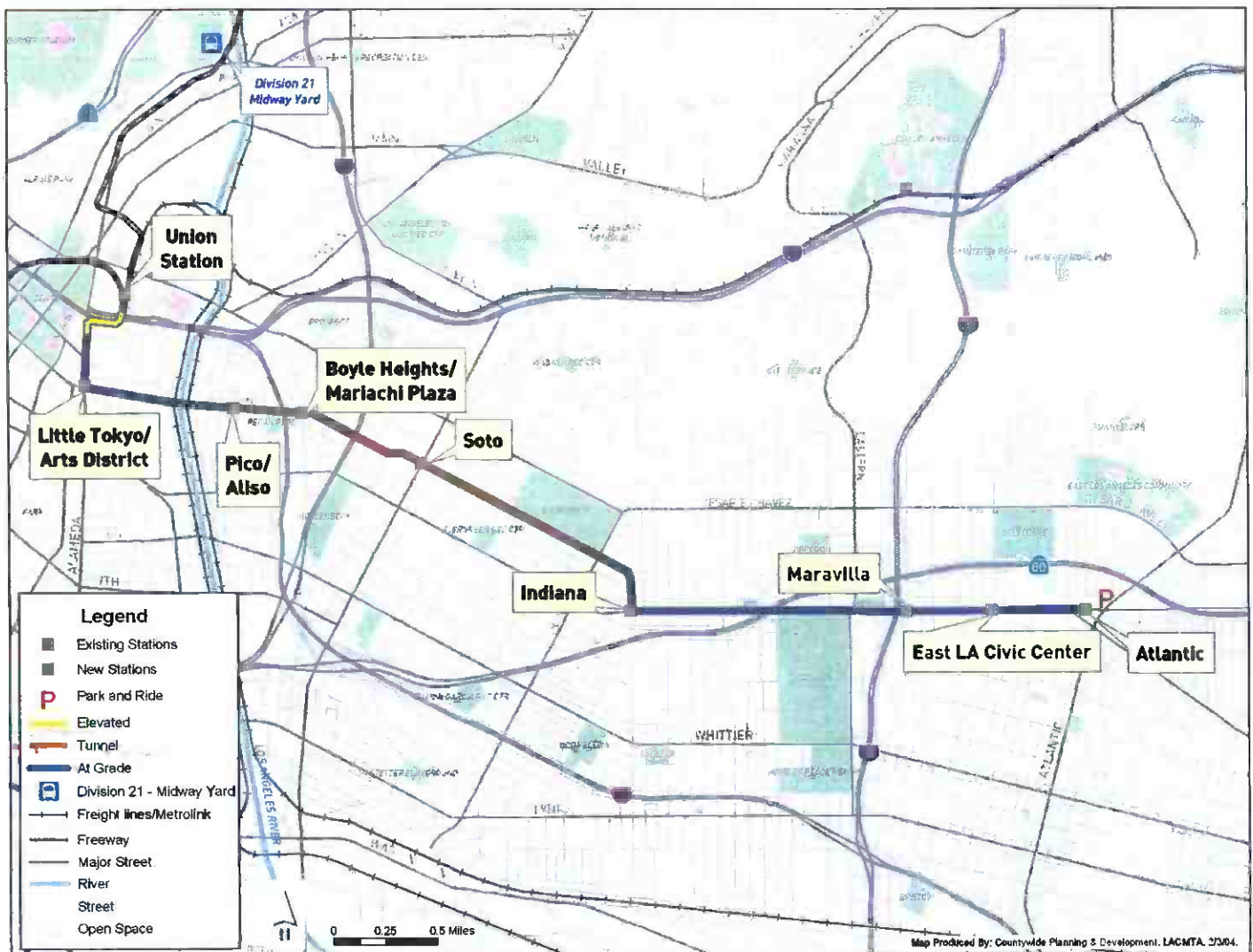


MONTHLY PROJECT STATUS REPORT

April 2004

Metro Gold Line Eastside Extension



Metro

METRO GOLD LINE EASTSIDE EXTENSION

MONTHLY PROJECT STATUS REPORT

THE PREPARATION OF THIS DOCUMENT HAS BEEN FINANCED IN PART THROUGH A GRANT FROM THE U. S. DEPARTMENT OF TRANSPORTATION, FEDERAL TRANSIT ADMINISTRATION (FTA), UNDER THE FEDERAL TRANSIT ACT OF 1964, AS AMENDED, AND FUNDS FROM THE STATE OF CALIFORNIA.

APRIL 2004

TABLE OF CONTENTS

	Page No.
Project Overview.....	1
Management Issues.....	2
Project Status	
• Project Scope.....	3
• Schedule	
○ Key Milestones Six-Month Lookahead	4
○ Project Master Schedule Critical Path.....	5
○ Critical Path Narrative	6
• Project Cost Status.....	7-8
• Change Control Status.....	9
• Financial/Grant Status.....	10
• Staffing.....	11-12
• Real Estate.....	13
• Environmental.....	14
• Community Relations.....	14
• Quality Assurance.....	15
• Safety.....	15
• Third Party.....	16-18
• CPUC Crossing.....	19
FFGA Application and Supporting Documents.....	20-22
Contract P2550 Status	23
Photographs (Project Renderings).....	24-27
Appendices.....	28-31

PROJECT OVERVIEW

The Metro Gold Line Eastside Extension Project is a six-mile, dual track light rail system with eight new stations and one station modification. The system originates at Union Station in downtown Los Angeles, where it connects with the Pasadena Gold Line, traveling generally east to Pomona and Atlantic Boulevards. The system will bridge State Route 101 Freeway and traverse the existing 1st Street Bridge over the Los Angeles River. The system will travel south on Alameda Street and then east on 1st Street with two stations at Alameda and Utah Streets. East of the Los Angeles River and 1st and Utah Streets, the alignment transitions to tunnel for approximately 1.7 miles, and continues beneath 1st Street to underground stations at 1st Street and Boyle Avenue and 1st Street and Soto Street. The alignment returns to the surface near the intersection of 1st Street and Lorena Streets, then jogs to the south, transitioning to follow 3rd Street with stations at Indiana Street, Ford Boulevard, Mednik Avenue and Pomona and Atlantic Boulevards.

The Federal Transit Administration (FTA) submitted the Full Funding Grant Agreement (FFGA) documents to Congress on April 2, 2004 for their 60-calendar day review. The 60-day Congressional review concludes on June 1, 2004. Therefore, a contract award is planned to occur on June 2, 2004 and the construction NTP would occur in late June 2004. Based on these assumptions, the planned ROD is forecasted for July 2009.

Advanced utility relocations are underway by The Gas Company, SBC, Los Angeles Department of Water and Power (Power), and City of Los Angeles ITA. Adelphia Cable has completed all relocation work at all locations. All relocation work has completed at the Soto Station site. The remaining utility relocations will complete by June 15, 2004.

Thirty-four of the 42 grade crossing applications have been submitted to the California Public Utilities Commission (CPUC) for review. Of the 34 grade crossings, 24 have been approved.

MANAGEMENT ISSUES

New Item (Date Initiated: October 2003)

FEDERAL TRANSIT ADMINISTRATION (FTA) EXECUTION OF THE FULL FUNDING GRANT AGREEMENT (FFGA)

Concern/Impact

MTA is not able to issue Notice to Proceed's (NTP's) for the construction contracts without receiving a fully executed FFGA and the construction bid validity date will expire on June 2, 2004 for Contract C0803. The forecasted Project Revenue Operations Date is directly related to the FFGA execution date.

Status/Action

The plan is to have the FFGA executed by June 2, 2004 prior to the construction bids expiring.

PROJECT SCOPE

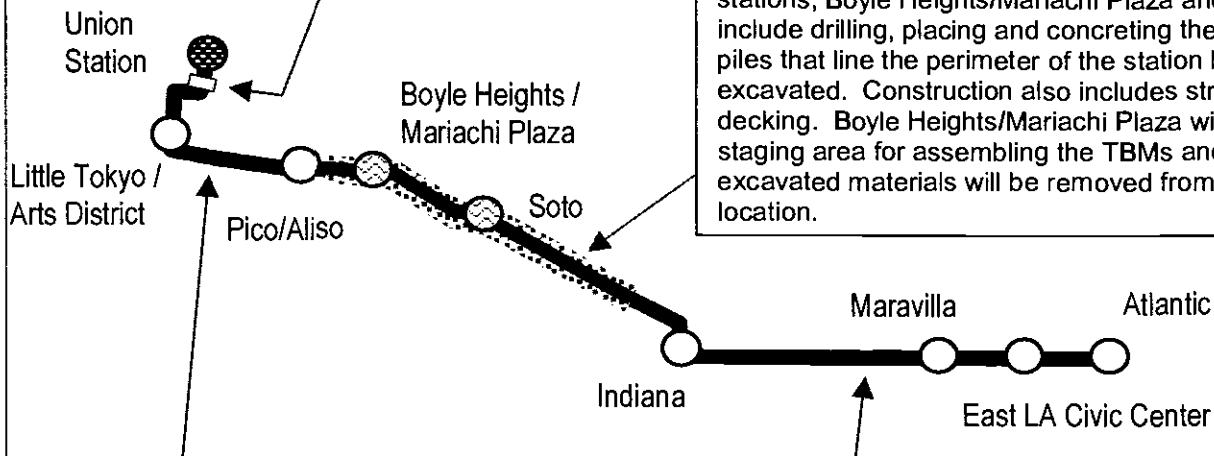
Contract C0802 – 101 Freeway Bridge

Overcrossing: The construction of the bridge has been combined with Caltrans freeway improvements project. While Caltrans will advertise and administer the construction, MTA will remain responsible for the design and construction costs of the bridge overcrossing.

Contract C0803 - Tunnel and Station

Excavation (Design/Bid/Build): Construction of the 1.7 mile tunnel segment includes tunnel excavation using two Earth Pressure Balance Machines (EPBM) type, excavation of cross passages, concreting of the tunnels and cross passages, and the east and west portals construction.

Station excavation of the two underground stations, Boyle Heights/Mariachi Plaza and Soto, include drilling, placing and concreting the soldier piles that line the perimeter of the station box to be excavated. Construction also includes street decking. Boyle Heights/Mariachi Plaza will be the staging area for assembling the TBMs and all excavated materials will be removed from this location.



Contract C0803 - Stations, Trackwork, and Systems (Design/Build): Construction of the two underground stations includes structural walls, station platforms, mezzanines, station entrances, and plazas, architectural finishes and all related mechanical and electrical work.

Construction of the six-mile alignment includes six at-grade stations, trackwork installation and testing for the entire alignment.

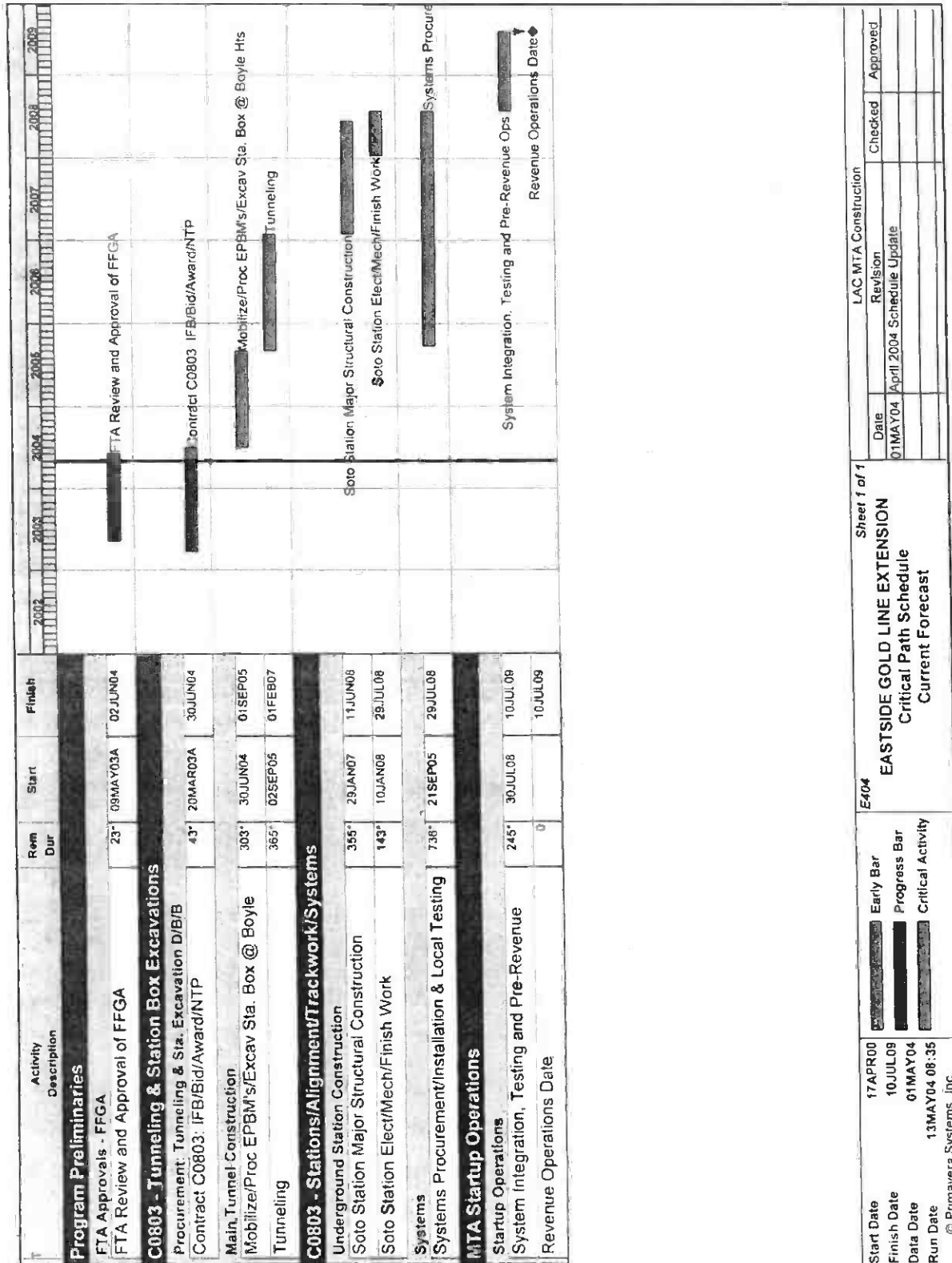
Systems installation and testing is inclusive of power systems, automatic train control, fire and emergency management, TRACS and communications systems. The contractor will be responsible for systems integration testing for the entire line segment prior to pre-revenue operations.

KEY MILESTONE SCHEDULE SIX-MONTH LOOKAHEAD

	Milestone Date	Apr-04	May-04	Jun-04	Jul-04	Aug-04	Sep-04
Notification of Award to MTA Board (Contract C0803)	4/22/04	◆					
Final Package Submittal to CPUC: Grade Crossings (Batches: 8 & 13)	5/14/04*		◆				
US-101 Freeway Improvements & Overcrossing (C0802): Bid Advertisement by Caltrans	5/24/04*		△				
Congressional FFGA Review Completes	6/1/04*			FTA			
FTA Executes FFGA	6/2/04*			FTA			
MTA Awards Contract C0803	6/2/04			◆			
Completion of Advanced Utility Relocations	6/15/04*			◆			
MTA Reviews and Approves Bonds & Insurance (Contract C0803)	6/30/04			◆			
MTA Issues Construction Notice To Proceed (Contract C0803)	6/30/04			◆			
C0803 Contractor Commences Procurement of Tunnel Boring Machines	6/30/04			◆			
US-101 Freeway Improvements & Overcrossing (C0802): Contract Award by Caltrans	8/9/04*					△	
US-101 Freeway Improvements & Overcrossing (C0802): Notice to Proceed by Caltrans	8/23/04*					△	

◆ MTA Staff Milestone	○ Eastside LRT Partners Deliverables	FTA FTA Approval
△ Other Agencies	* New Date	M Metro MTA Board Approval

PROJECT MASTER SCHEDULE CRITICAL PATH



CRITICAL PATH NARRATIVE

The critical path for construction begins with contract award and contract Notice to Proceed (NTP) and ends with the Revenue Operations Date (ROD). MTA has concluded the bid evaluation process of Contract C0803 and MTA staff has made the recommendation for award to the Chief Executive Officer.

The Federal Transit Administration (FTA) submitted the Full Funding Grant Agreement (FFGA) documents to Congress on April 2, 2004 for their 60-calendar day review. The 60-day Congressional review concludes on June 1, 2004. Therefore, a contract award is planned to occur on June 2, 2004 and the construction NTP would occur in late June 2004. Based on these assumptions, the planned ROD is forecasted to occur in July 2009.

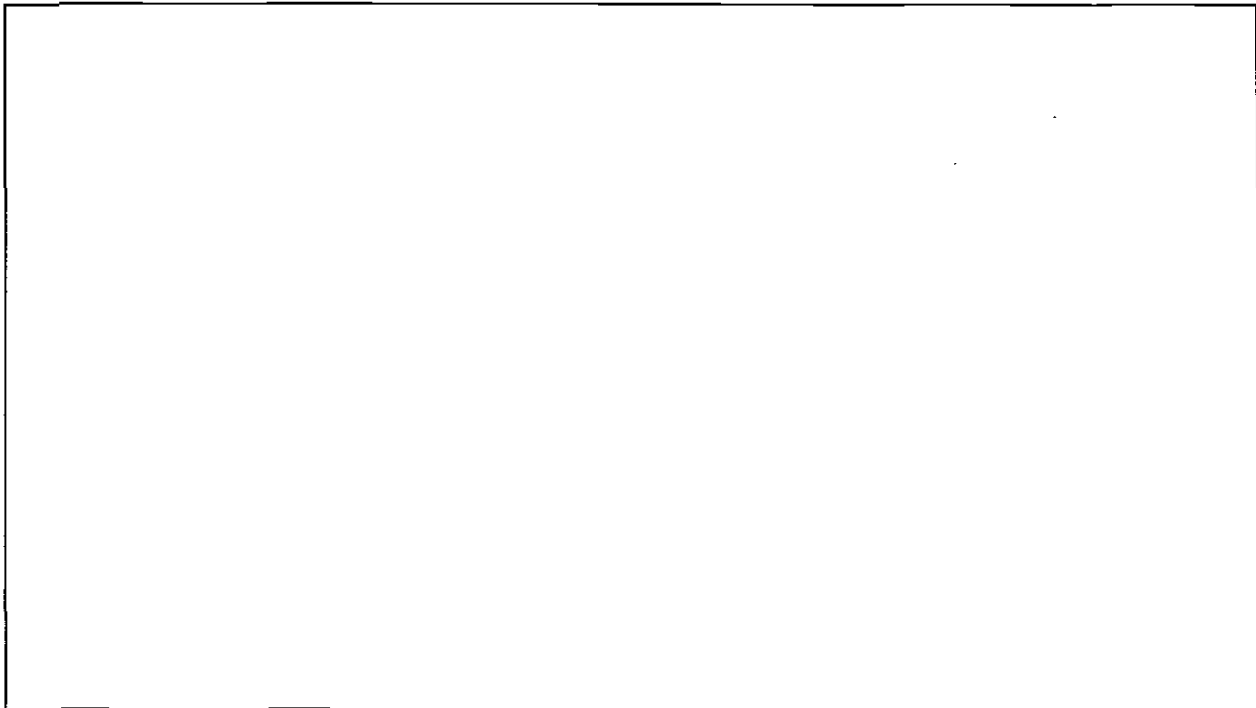
Upon the issuance of Notice To Proceed, there will be a 13-month lead time for the procurement of two Earth Pressure Balance Machines (EPBMs). Concurrent with the EPBM procurement, the project will proceed with mobilization, pile installation, and station box excavations. The station box excavations are scheduled to complete prior to EPBMs delivery.

The critical path continues with EPBMs assemblies, excavation of both tunnels, excavation of crosspassages, and tunnel invert and walkway construction. The critical path then follows Soto underground station construction. The systems equipment installation and local facilities testing is the last stage of the critical path prior to entering the final test stage where systems integration testing and pre-revenue operations are conducted.

PROJECT COST STATUS

In \$ Million

Description	Previous Forecast	Current Forecast	Variance	Commitments	Expenditures
Guideways	400.6	400.6	0.0	0.0	0.0
Yards & Shops	3.0	3.0	0.0	0.0	0.0
Systems/Equipment	77.3	77.3	0.0	0.0	0.0
Stations	116.6	116.6	0.0	0.0	0.0
Vehicles	31.7	31.7	0.0	31.7	0.0
Special Conditions	19.8	19.8	0.0	13.1	2.0
Right-of-Way	35.7	35.7	0.0	51.0	22.9
Professional Services	135.3	135.3	0.0	66.0	54.4
Contingency	60.3	60.3	0.0	0.0	0.0
Project Revenue	0.0	0.0	0.0	0.0	0.0
TOTAL	880.4	880.4	0.0	161.8	79.2



PROJECT COST STATUS

COST BY ELEMENT / LINE ITEM
\$ IN THOUSANDS

LINE ITEM	DESCRIPTION	ORIGINAL BUDGET	CURRENT BUDGET		COMMITMENTS		EXPENDITURES		CURRENT FORECAST	
			PERIOD	TO DATE	PERIOD	TO DATE	PERIOD	TO DATE	PERIOD	TO DATE
01	TUNNELING	-	-	-	-	-	-	-	-	172,042
02	AT-GRADE	-	-	-	-	-	-	-	-	222,372
03	101 FREEWAY BRIDGE OVERCROSSING	-	-	-	-	-	-	-	-	6,178
	ELEMENT TOTAL - G GUIDEWAYS	-	-	-	-	-	-	-	-	400,592
10	MAINTENANCE FACILITY & YARD MODIFICATIONS	-	-	-	-	-	-	-	-	3,000
	ELEMENT TOTAL - Y YARD AND SHOPS	-	-	-	-	-	-	-	-	3,000
20	SYSTEMS / EQUIPMENT	-	-	-	-	-	-	-	-	72,745
21	TICKET VENDING MACHINES	-	-	-	-	-	-	-	-	4,559
	ELEMENT TOTAL - S SYSTEMS / EQUIPMENT	-	-	-	-	-	-	-	-	77,304
30	STATION EXCAVATION	-	-	-	-	-	-	-	-	24,228
31	STATIONS	-	-	-	-	-	-	-	-	92,153
32	STATIONS (MISCELLANEOUS)	-	-	-	-	-	-	-	-	246
	ELEMENT TOTAL - ST STATIONS	-	-	-	-	-	-	-	-	116,627
40	10 - LRT VEHICLES (INCLUDING PARTS)	-	-	-	-	-	-	-	-	31,748
	ELEMENT TOTAL - V VEHICLES	-	-	-	-	-	-	-	-	31,748
50	ENVIRONMENTAL MITIGATION	-	-	-	-	-	-	-	-	882
51	UTILITY/AGENCY FORCE ACCOUNTS	-	-	-	-	-	-	-	-	11,736
52	MTA SYSTEMS INTEGRATION OVERSIGHT/PRE-REV OPS	-	-	-	-	-	-	-	-	3,122
53	C0801/C0803 STIPENDS	-	-	-	-	-	-	-	-	1,050
54	ART PROGRAM	-	-	-	-	-	-	-	-	1,036
	ELEMENT TOTAL - SC SPECIAL CONDITIONS	-	-	-	-	-	-	-	-	19,844
60	REAL ESTATE	-	-	-	-	-	-	-	-	28,701
61	LAUSD RAMONA HS RELOCATION PLAN	-	-	-	-	-	-	-	-	7,040
	ELEMENT TOTAL - R RIGHT-OF-WAY	-	-	-	-	-	-	-	-	35,741
70	AGENCY - MTA PROJECT ADMINISTRATION	-	-	-	-	-	-	-	-	63,558
71	DESIGN ENGINEERING	-	-	-	-	-	-	-	-	39,856
72	CONSTRUCTION MANAGEMENT	-	-	-	-	-	-	-	-	16,897
73	OTHER PROFESSIONAL SERVICES	-	-	-	-	-	-	-	-	14,994
	ELEMENT TOTAL - P PROFESSIONAL SERVICES	-	-	-	-	-	-	-	-	135,304
80	CONSTRUCTION	-	-	-	-	-	-	-	-	45,311
81	SPECIAL CONDITIONS	-	-	-	-	-	-	-	-	8,246
82	REAL ESTATE	-	-	-	-	-	-	-	-	673
83	PROFESSIONAL SERVICES	-	-	-	-	-	-	-	-	6,024
	ELEMENT TOTAL - C PROJECT CONTINGENCY	-	-	-	-	-	-	-	-	60,254
90	PROJECT REVENUE	-	-	-	-	-	-	-	-	-
	ELEMENT TOTAL - A PROJECT REVENUE	-	-	-	-	-	-	-	-	-
	TOTAL	-	-	-	119	161,826	2,276	79,233	-	880,414

NOTE: EXPENDITURES ARE CUMULATIVE THROUGH MARCH 2004

CHANGE CONTROL STATUS

	A	B		C		D=A+B+C	E		F=D+E
	Approved					Obligated	Potential		
Description	Award Amount	Executed Changes		LNTPs (NTE)		Total Approved Amount	Pending		Total Potential Value
		#	\$	#	\$		#	\$	
Engineering Design Services	18,929,502	12	15,669,538	0	0	34,599,040	0	0	34,599,040
Environmental Services	936,940	6	394,972	2	8,000	1,339,912	3	148,697	1,488,609
Design/Build Advisory Panel Services	1,059,840	0	0	0	0	1,059,840	0	0	1,059,840
Construction Management Support Services	26,598	0	0	0	0	26,598	0	0	26,598
Project Management Assistance Support	166,366	7	3,256,556	0	0	3,422,922	0	0	3,422,922
Vehicles Consultant	1,717,707	0	0	0	0	1,717,707	0	0	1,717,707
Light Rail Vehicles Acquisition	31,747,734	0	0	0	0	31,747,734	0	0	31,747,734
TOTAL	54,584,687	25	19,321,066	2	8,000	73,913,753	3	148,697	74,062,450

FINANCIAL/GRANT STATUS

APRIL 2004

STATUS OF FUNDS BY SOURCE

SOURCE	(B) TOTAL FUNDS ANTICIPATED	(C) TOTAL FUNDS AVAILABLE	(D) (D/B) COMMITMENTS		(E) (E/B) EXPENDITURES		(F) (F/B) BILLED to FUNDING SOURCE	
			\$	%	\$	%	\$	%
FEDERAL - SECTION 5309 NEW START	490.7	17.3	83.8	17%	15.6	3%	15.6	3%
FED - SECTION 5309 FIXED GUIDEWAY	23.1			0%		0%		0%
FEDERAL - CMAQ	10.3			0%		0%		0%
REGIONAL IMPROVMT PROG-FED	179.6	4.6	30.7	17%	4.6	3%	4.6	3%
REGIONAL IMPROVM PROG-STATE	0.6	0.6	0.6	100%	0.6	100%	0.6	100%
STATE TCRP	45.0	45.0	45.0	100%	45.0	100%	45.0	100%
PROP A 35% / PROP C 40% BONDS	121.0	1.8	1.8	1%	1.8	1%	1.8	1%
LEASE REVENUES	10.1			0%		0%		0%
UNBILLED ACCRUALS		11.7			11.7			
SUB-TOTAL	880.4	80.9	161.8	18%	79.2	9%	67.5	8%
PROP A/PROP C (INTEREST COST)	18.4	0.0	0.0	0%	0.0	0%	0.0	0%
TOTAL	898.8	80.9	161.8	18%	79.2	9%	67.5	8%

(1) Based on August 03 Adopted Short Range Transportation Plan (includes interest cost)
NOTE: EXPENDITURES ARE CUMULATIVE THROUGH MARCH 2004.

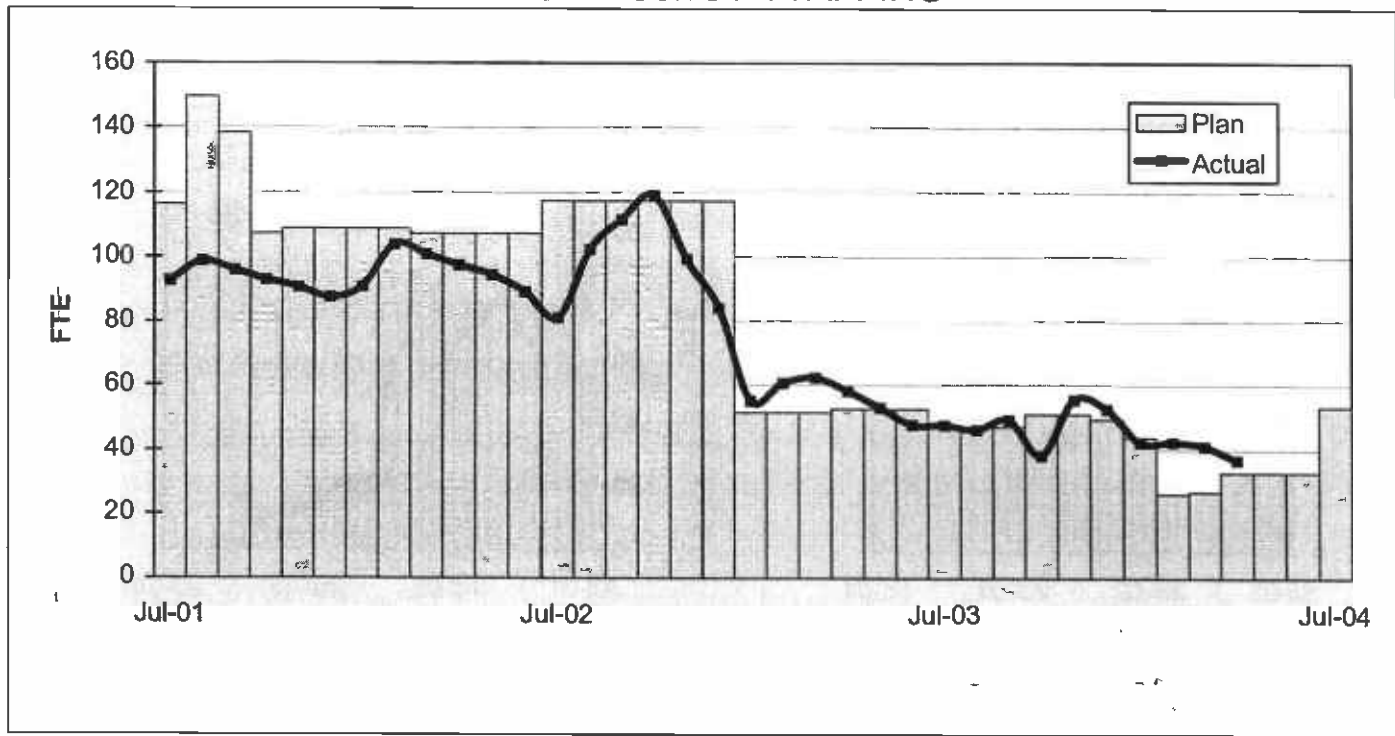
STATUS OF FUNDS ANTICIPATED

FEDERAL SECTION 5309: MTA submitted a grant amendment application CA-03-0508-04 for \$3,934,330 on April 18, 2003. Funds were available for draw down as of June 2003.

STATE TCRP: On April 3, 2003 the California Transportation Commission approved MTA's request to amend the STIP to convert \$191 million of unallocated TCRP funds to STIP funds. On August 25, 2003, MTA submitted a request for AB1335 Letter of No Prejudice (LONP) authority for Phase 4 construction activities. The LONP is scheduled for approval at the May 2004 CTC Meeting.

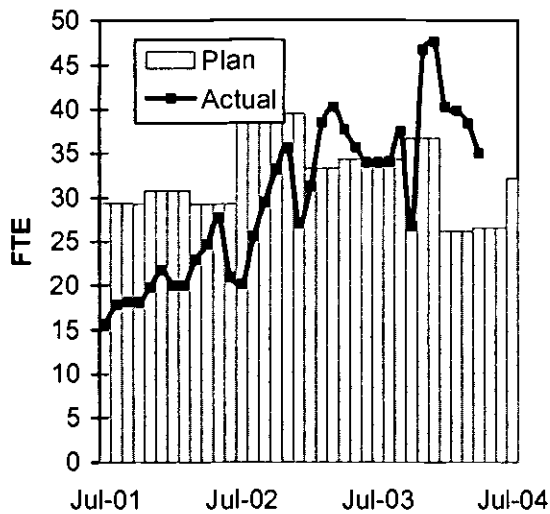
STAFFING STATUS

TOTAL PROJECT STAFFING



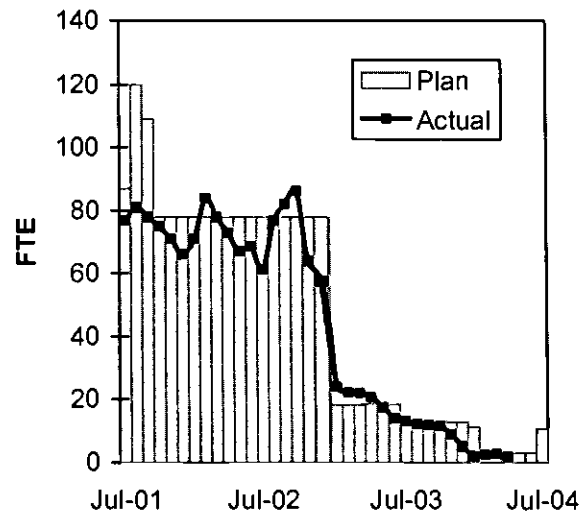
STAFFING STATUS

AGENCY STAFFING

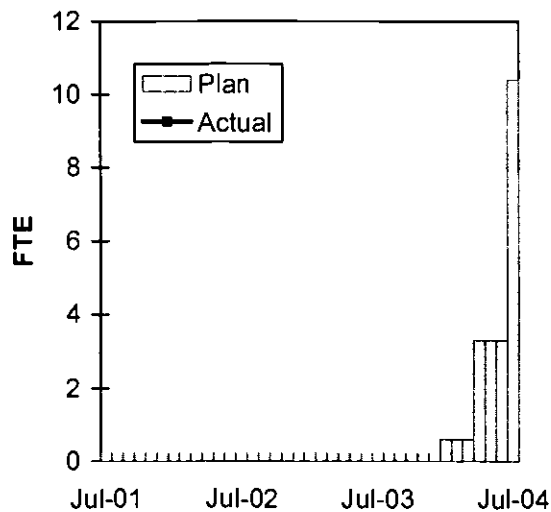


Although the actual agency staffing level is above the plan, MTA Project Management has reviewed the agency labor charges for the past few months and will consider labor adjustments as required, to conform to the plan.

ELRT PARTNERS



CONSTRUCTION MANAGEMENT



REAL ESTATE STATUS

- For C0803, the tunnel portion of the alignment, 41 parcels are required for acquisition (10 full takes, 16 sub-surface easements, 8 part takes, 5 sub-surface easements/building protection, and 2 building protections).
- For C0803, the at-grade portion of the alignment, 25 parcels are required for acquisition (18 full takes and 7 partial takes). Nine parcels have been identified for the proposed Ramona High School site reconfiguration.
- For C0802, 3 parcels are required (2 surface easements and 1 full take parcel).
- Sixty-seven parcels have been certified, 40 for C0803-Tunnel, 25 for C0803-At-Grade and 2 for C0802. Offers have been made to 34 property owners. A total of 20 parcels have been acquired (11 under C0803-Tunnel, 8 under C0803-At-Grade, and 1 under C0802). Three parcels are in condemnation and Real Estate is in negotiations with the other property owners.
- Third Party Administration is working with Caltrans in obtaining 4 Encroachment Permits (two for C0803 Tunnel and two for C0803 At-Grade). Three (3) street vacations and two (2) access closures are also being processed with the City of LA.

REAL ESTATE ACQUISITION SCHEDULE SUMMARY

Number of Parcels	Required	Acquired	On Schedule	Behind Schedule	
				Number	Avg. Calendar Days
This Period	69	20	49	0	0
Last Period	69	18	51	0	0

REAL ESTATE STATUS TO DATE BY CONTRACT ACQUISITION PHASE

CONTRACT NO.	Number of Parcels	Agreements Signed	Parcels in Condemnation	Under Negotiation	In Appraisal Process	Inactive Parcels	Parcels Available
C0803-Tunnel	41	11	2	4	* 24	0	11
C0803-At-Grade	25	8	1	7	0	** 9	8
C0802	3	1	0	2	0	0	1
TOTAL	69	20	3	13	24	9	20
LAST PERIOD	69	18	5	13	24	9	18

* Subsurface easements/building protection

** Alma parcels for LAUSD Ramona High School; pending completion of CEQA process (need date 6/1/05)

ENVIRONMENTAL STATUS

- Industrial Waste Water Permit from the City of Los Angeles has been written by the City of Los Angeles.
- NPDES activity report was delivered to the RWQCB.
- Prepared Quarterly Mitigation Monitoring Report for submittal to FTA,

COMMUNITY RELATIONS STATUS

- Coordinated public outreach events with community representatives to facilitate interest in the Metro Gold Line Eastside Project.
- Continued Community Relation Field Office setup in preparation of construction.
- Notified the public on advanced utility relocation activities in Boyle Heights.

QUALITY ASSURANCE STATUS

- Monitored utility relocations with field visits and reporting. Issues of concern are immediately coordinated with Third Party and the progress of work continues to be documented in periodic Quality Surveillance Reports complete with photographs.
- Completed Construction Division Inspection Instruction (CDII) revision. Documents are undergoing final review and issuance.
- In meetings with Contractor, comments were provided/coordinated with Contractor representatives to facilitate completion of a Project Quality Manual and Procedures sufficient to support initial (Design/Bid/Build) Scope of Work only. Contractor to separately develop plans for the design and construction of (Design/Build) Scope of Work.

SAFETY STATUS

- Participated in weekly progress meetings with Utility Contractor to discuss safety related issues and utility relocation schedule.
- Monitored utility relocation activities to ensure safety compliance.
- Participated in bi-weekly MTA management staff progress meeting.
- Met with the Eastside LRT Contractor to review Cal-OSHA Gassy Reclassification Proposal.

THIRD PARTY AGREEMENT STATUS

Third Party	Type of Agreement	Forecast Execution Date	Required Need Date	Status/ Comments
City of Los Angeles	Amendment	Complete	N/A	Fully executed on 12/23/02.
Los Angeles County	Master	Complete	N/A	Execution completed 4/1/03.
Caltrans (All Projects)	Master	Complete	N/A	MTA execution completed 5/7/03. Caltrans full execution occurred in July 2003.
Caltrans (101)	Design	Complete	N/A	MTA execution completed by 5/7/03. Caltrans full execution occurred in July 2003.
Caltrans (101)	Construction	Complete	N/A	MTA execution completed 6/16/03. Caltrans full execution occurred in September 2003.
Caltrans (101)	Maintenance	10/04	6/07	Initial negotiation meeting on 1/9/03 resulted in MTA's recommendation to use the existing agreement with a similar San Diego system. The San Diego agreement was forwarded to MTA on 1/29/03. MTA received a draft from Caltrans on 4/10/03. Agreement was returned to Caltrans on 4/22/03 with comments. After a negotiation meeting on 7/29/03, a draft agreement by Caltrans was received on 1/22/04 but contained none of the previous comments.
LADWP (Water)	Amendment	5/04	6/04	A redraft was sent 2/19/04 and was discussed in 3/8/04 and 3/12/04 meetings. Additional meetings were held on 4/8/04 and 4/9/04 to complete review and necessary changes to "Deadlines and Delays." Alternative language acceptable to both parties was agreed to on 4/29/04 and is incorporated into the document. The document will be forwarded to DWP by 5/6/04.
LADWP (Power)	Amendment	5/04	6/04	A redraft was sent 2/19/04 and was discussed in 3/8/04 and 3/12/04 meetings. Additional meetings were held on 4/8/04 and 4/9/04 to complete review and necessary changes to "Deadlines and Delays." Alternative language acceptable to both parties was agreed to on 4/29/04 and is incorporated into the document. The document will be forwarded to DWP by 5/6/04.
So. Cal. Edison Co.	Amendment	5/04	6/04	The proposed agreement was not acceptable to SCE. A sense of urgency was instilled to SCE in 3/17/04 meeting. A revised draft amendment was agreed upon in 4/12/04 meeting and was forwarded to SCE on 4/15/04 for review.

THIRD PARTY AGREEMENT STATUS (Continued)

Third Party	Type of Agreement	Forecast Execution Date	Required Need Date	Status/ Comments
The Gas Company	Amendment	5/04	6/04	A redraft prepared by the Gas Co. was review by MTA on 4/9/04 and a revised document was sent to the Gas Co. on 4/19/04 for final review and execution. Another draft was submitted by the County Counsel on 4/29/04 and sent to the Gas Co. for execution.
SBC	Amendment	5/04	6/04	A redraft was sent 2/19/04 and was agreed upon in 3/26/04 meeting with an exception of the use of D/B in the agreement. MTA reviewed and completed necessary changes on 4/9/04 and forwarded the revised document to SBC on 4/22/04 for final review and execution. SBC is set to strike on 5/8/04, which may have an impact to its execution.
Adelphia Cable Company	Amendment	5/04	6/04	A meeting is being arranged to discuss the revised amendment.
California Water Service Company	Master	5/04	6/04	Cal Water could not agree with the use of D/B in the agreement. MTA responded in a letter that they are responsible to MTA. A draft was sent to Cal Water on 3/15. Received minor comments on 4/22/04 and forwarded it to legal for review. If comments can be incorporated, a final draft will be sent for execution.
L.A.County Sanitation Districts	N/A	Complete	6/04	Sanitation District letter dated 3/26/03 stated no need for an agreement since there are no relocations necessarily related to their facilities. They will review the submittals related to encasement for their facility on Indiana Street.
MCI Worldcom	Amendment	5/04	6/04	An amendment to the previous agreement was produced, discussed and agreed upon on most items. MTA completed the review and necessary changes made by MCI and sent a revised document to MCI on 4/19/04 for final review and execution.
Metropolitan Water District	Amendment	Complete	6/04	1/7/03 meeting resulted in using the existing agreement. A letter was sent to MWD on 4/1/03 for their concurrence. Concurrence was executed by MWD on 4/21/03.
Verizon Wireless	Amendment	5/04	6/04	The revised draft amendment was hand delivered to Verizon on 11/19/03 and an electronic copy was sent to them 2/19/04. Verizon will respond in the 2 nd week of May.
AT&T Local Services	Amendment	5/04	6/04	A previous draft amendment will be sent to AT&T on 3/1/04. Legal review is still underway.

THIRD PARTY AGREEMENT STATUS (Continued)

Third Party	Type of Agreement	Forecast Execution Date	Required Need Date	Status/ Comments
GST	N/A			Facilities are not impacted by Eastside Construction
Exxon Mobil Oil Company	N/A			Facilities are not impacted by Eastside Construction
Pacific Pipeline Company	N/A			Facilities are not impacted by Eastside Construction
Kinder Morgan Pipeline Company	N/A			Facilities are not impacted by Eastside Construction
Tosco Refining Company	N/A			Facilities are not impacted by Eastside Construction
Equilon Pipeline Company	N/A			Facilities are not impacted by Eastside Construction
Level 3 Communications	N/A			Facilities are not impacted by Eastside Construction
Broadwing Communications	N/A			Facilities are not impacted by Eastside Construction
Eller Media	N/A			Facilities are not impacted by Eastside Construction
Quest-SP Telecom	N/A			Facilities are not impacted by Eastside Construction

CPUC CROSSING SUMMARY

Batch	Status	Initial Package Submittal to MTA	Field Diagnostic Meeting	Revised Drawings Due to MTA	Draft Write-up to MTA	Draft Package Submittal to PUC Local office and Agencies	Final Package Submittal to PUC	CPUC Final Approval
1	Complete	8/5/02	8/12/02	8/26/02	9/6/02	9/6/02	9/6/2002	Approved
2	Complete	10/4/02	10/11/02	10/25/02	11/6/02	11/22/02	11/22/2002	Approved
3	Complete	2/6/03	2/27/03	3/10/03	1/27/03	4/11/02	4/18/2003	Approved
4	Completed	12/14/02	1/15/03	1/29/03	11/13/02	5/5/03	6/18/2003	
4A	Completed	1/24/03	1/29/03	3/14/03	2/7/03	9/5/03	1/23/2004	
6	Complete	3/19/03	3/26/03	6/20/03	2/7/03	9/5/03	9/12/2003	Approved
7	Complete	12/11/02	12/18/02	3/31/03	2/7/03	5/5/03	7/25/2003	
8	In Progress	11/26/02	12/18/02	3/31/03	11/15/02	6/6/03	5/14/2004	
9	Complete	1/20/03	1/29/03	3/31/03	11/22/02	8/29/03	9/12/2003	Approved
10	Complete	12/11/03	12/18/02	3/10/03	11/22/02	5/5/03	8/29/2003	Approved
11	Complete	2/13/03	2/27/03	4/18/03	12/6/02	6/6/03	8/29/2003	Approved
12	Complete	2/13/03	2/27/03	4/18/03	12/13/02	6/6/03	9/5/2003	Approved
13	In Progress	2/6/03	2/20/03	4/18/03	2/21/03	6/6/03	5/14/2004	
14	Completed	1/8/03	1/15/03	3/14/03	11/12/02	8/29/03	10/30/2003	
15	Complete	2/26/03	N/A	N/A	2/21/03	6/6/03	8/29/2003	Approved
16	Complete	2/26/03	N/A	N/A	2/28/03	6/6/03	8/29/2003	
17	Complete	1/8/03	1/15/03	N/A	2/14/03	5/5/03	6/13/2003	Approved
18	Complete	1/8/03	1/15/03	3/20/03	2/14/03	5/5/03	6/13/2003	Approved
Agency Responsible		ELRTP	MTA	ELRP	ELRTP	MTA	MTA	

Batch No. 5 is removed now as the Midway Yard will be utilized.

County and Caltrans have resolved issue for the grade-separated Batch No's 8 and 13. Further discussions regarding curb height will occur during final design.

SHADED AREAS REPRESENTS COMPLETION

24 applications approved, 10 under review, 8 to be submitted of which 6 are related to grade separated crossings.

Batch Descriptions			
1	1st / Alameda	10	3rd / Ford
2	Alameda / Temple		3rd / McDonnell
	1st / Hewitt		3rd / Arizona
	Ped Crossings @ 1st / Alameda Station	11	3rd / Mednik
3	1st / Vignes		3rd / Civic Center Drive
4	1st / Lorena		3rd / La Verne
4A	Indiana/1st	12	3rd / Driveways to Sherriff's Station
	Indiana/3rd		3rd / Wood / Via Corona / Pomona / Beverly
	Indiana Pedestrian Crossing	13	3rd / 60 Fwy WB Connector
	Gleason		3rd / 60 Fwy over ELRT
6	1st / Mission		3rd / 710 Fwy SW Connector
	1st / Anderson		3rd / Bridge over 710 Fwy
	1st / Clarence		3rd / 710 Fwy SE Connector
	1st / Utah	14	Union Station Service Road
	1st/Gless Pedestrian Crossing	15	1st / Santa Fe
7	3rd / Dittman		1st / Myers
	3rd / Rowan	16	1st / MTA
8	3rd / Gage		1st / BNSF
	3rd / 60 Fwy WB Ramps		1st / Union Pacific
	3rd / Downey	17	US 101 Fwy Overcrossing
9	3rd / Marianna	18	Commercial Street Overcrossing
	3rd / Eastern		

FFGA APPLICATION DOCUMENT CHECKLIST SUPPORTING DOCUMENTS

DOCUMENT	AGENCY	STATUS/COMMENTS
Value Engineering	MTA	Complete.
Record of Decision/FONSI	FTA	Complete.
Quality Management Plan	MTA	FTA approved for current stage.
FSTIP Approval	SCAG	Complete. Included in 10/4/02 FSTIP.
Annual Certifications/ Assurances	MTA	Complete.
Financing Plan	MTA	Complete.
Rail Fleet Management Plan	MTA	Revised plan to submitted to FTA.
Bus Fleet Management Plan	MTA	FTA approved for current stage. Revised plan to be submitted to FTA.
Real Estate Acquisition Plan	MTA	FTA approved plan.
Submit System Safety Program Plan to CPUC	MTA	Revised plan was submitted to the CPUC and finalized.
Department of Labor (13c) Certification	DOL	Complete.
Civil Rights Program Review	FTA	Complete.
Before and After Study Plan	MTA	Complete.
Risk Assessment	MTA	Complete.
Spot Report (as needed)	FMO/PMOC	Final PMO Spot Report issued on 9/23/03 and Final FMO Spot Report issued on 9/24/03. Updated financial information submitted to FMO. Revised final FMO Spot Report issued. Revised final PMO Spot Report issued.
Project Management Plan	MTA	FTA approved plan for inclusion in FFGA.
Interagency Agreements including CPUC Oversight (MOU)	MTA	Revisions to existing agreements in progress.
Environmental Permits & Biological Determination	TBD	TBD if needed.

FFGA APPLICATION DOCUMENTS

DOCUMENT	AGENCY	STATUS/COMMENTS
Part I – Full Funding Grant Agreement	FTA	Final Part 1 sent to Region IX.
Attachment 1 – Scope of Project	MTA	Revised version submitted to FTA HQ incorporating BAFO results.
Attachment 1A – Project Map	MTA	Revised version submitted to FTA HQ incorporating BAFO results.
Attachment 2 – Project Description	MTA	Revised version submitted to FTA HQ incorporating BAFO results.
Attachment 3 – Baseline Cost Estimate	MTA	Revised version submitted to FTA HQ incorporating BAFO results.
Attachment 3A – Project Budget	MTA	Revised version submitted to FTA HQ incorporating BAFO results.
Attachment 4 – Baseline Schedule	MTA	Revised version submitted to FTA HQ incorporating BAFO results.
Attachment 5 – Schedule of Prior Grants and Related Documents	MTA	Revised version submitted to FTA HQ incorporating BAFO results.
Attachment 6 – Schedule of Capital New Starts Funds	MTA	Revised version submitted to FTA HQ incorporating BAFO results.
Attachment 7 – Measures to Mitigate Environmental Impacts	MTA	Revised version submitted to FTA HQ incorporating BAFO results.
Attachment 8 – Before and After Study	MTA	Revised version submitted to FTA HQ incorporating BAFO results.
Region IX to HQ FFGA Recommendation Memo	FTA	Complete.
Submittal of paper grant application (5309) and TEAM application (Part II – FFGA included).	MTA	TEAM applications CA-90-Y056-01 and CA-03-0508-05 submitted for FTA approval. CA-03-0661 pending TEAM submission.

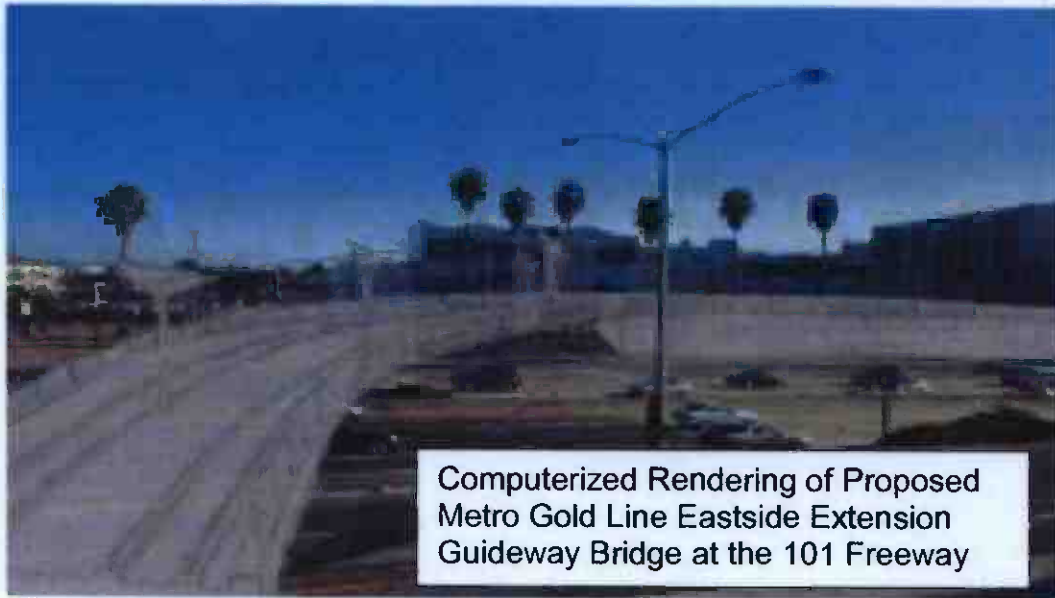
FFGA EXECUTION PROCESS

DOCUMENT	AGENCY	TARGET DATE	STATUS/COMMENTS
FTA letter to Congress	FTA	4/2/04	Complete.
Congressional Review	Congress	4/2/04- 6/1/04	
FTA Approval Letter to Grantee	FTA	6/2/04	
Review/Execution of FFGA	FTA	6/2/04	

CONTRACT P2550 STATUS

Description: 2550 Rail Vehicle Program Contractor: AnsaldoBreda, Italy	Contract No. P2550 Project: 800151 Status as of: April 30, 2004					
Progress/Work Completed: In April, the Metro 2550 Integrated Project Team (IPT) continued to review Contractor Design submittals with AnsaldoBreda in Italy, Belgium, and the Czech Republic. The following was completed: 1. The Vehicle Body Design Review was conducted in Pistoia, Italy by the 2550 IPT. 2. The Operators Cab Configuration Design Review was conducted in Pistoia, Italy by the 2550 IPT. 3. The Propulsion System Design Review was conducted in Naples, Italy by the 2550 IPT. 4. The Car Shell & Trucks Finite Element Analysis & Modeling Review was conducted in Italy by the 2550 IPT. 5. The HVAC Subcontractor Site Review was conducted in the Czech Republic by the 2550 IPT. 5. The Drive Gear Box Subcontractor Site Review was conducted in Belgium the 2550 IPT. Areas of Concern: none	Major Activities (In Progress): Contractor continued the Milestone 5A & 6A work. Major Activities Next Period: Contractor will invoice for Contract Milestone 4A in May 2004 In addition to a general Program Progress Review, the IPT will conduct of Design Reviews in Los Angeles for these subassemblies: 1. TWC Tests on the 3 existing rail lines. 2. Design Review for TWC. 3. Design Review for ATP. 4. Review of Test Procedures. 5. Design of Interior Lighting. Weekly teleconference meetings continue to monitor technical design and production development of the 2550 rail vehicles.					
Schedule Summary: Date of Award: 04/24/03 Notice to Proceed: 06/06/03 Original Contract Duration: 1460 CD Current Contract Duration: 1460 CD Elapsed Time from NTP: 357 CD Option 1 & 2 Contract duration 1460 CD** ** after starting options 1 & 2 Note: MTA has completed the Contract Modification #1 which makes certain administrative changes		Original Contract Dates	Time Extension	Current Contract	Forecast	Variance CDs
	Notice to Proceed	06/06/03	0	6/06/03A	6/06/03A	0
	Milestone 1A - Approval of Eng. Production Plan	08/08/03	0	12/08/03	10/15/03A	0
	Milestone 2A - Appr. of Contr. Prelim. 13 weeks schedule	09/05/03	0	11/20/03	12/30/03A	0
	Milestone 3A - Approval of vehicle cross-section dwgs	11/07/03	0	01/20/04	12/30/03A	0
	Milestone 4A - Approval of general vehicle arrang. dwgs	01/02/04	0	01/31/04	3/31/04A	60
	Milestone 5A - Appr. dwgs. per Sect. 1.13.1 Tech Specs	05/07/04	0	05/07/04	05/07/04	0
	Milestone 6A - Appr. of Operator Cab Mockup	06/04/04	0	06/04/04	06/04/04	0
	Milestone 14A - Acceptance of two First Article Vehicles	12/02/05	0	12/02/05	12/02/05	0
Physical Percent Complete: Physical completion * as of April 2004 is 23.5%. * Note: Physical completion assessment reflects work completed and invoiced plus current work in progress.	Cost Summary: \$ In millions 1. Award Value: 158.74 (Metro Gold Line Eastside Ext Only: 31.75) 2. Executed Modifications: 0.00 3. Approved Change Orders: 0.00 4. Current Contract Value (1 + 2 + 3): 158.74 5. Pending Changes: 0.00 6. Incurred Cost: 26.27					

CURRENT PROJECT RENDERINGS



Computerized Rendering of Proposed
Metro Gold Line Eastside Extension
Guideway Bridge at the 101 Freeway

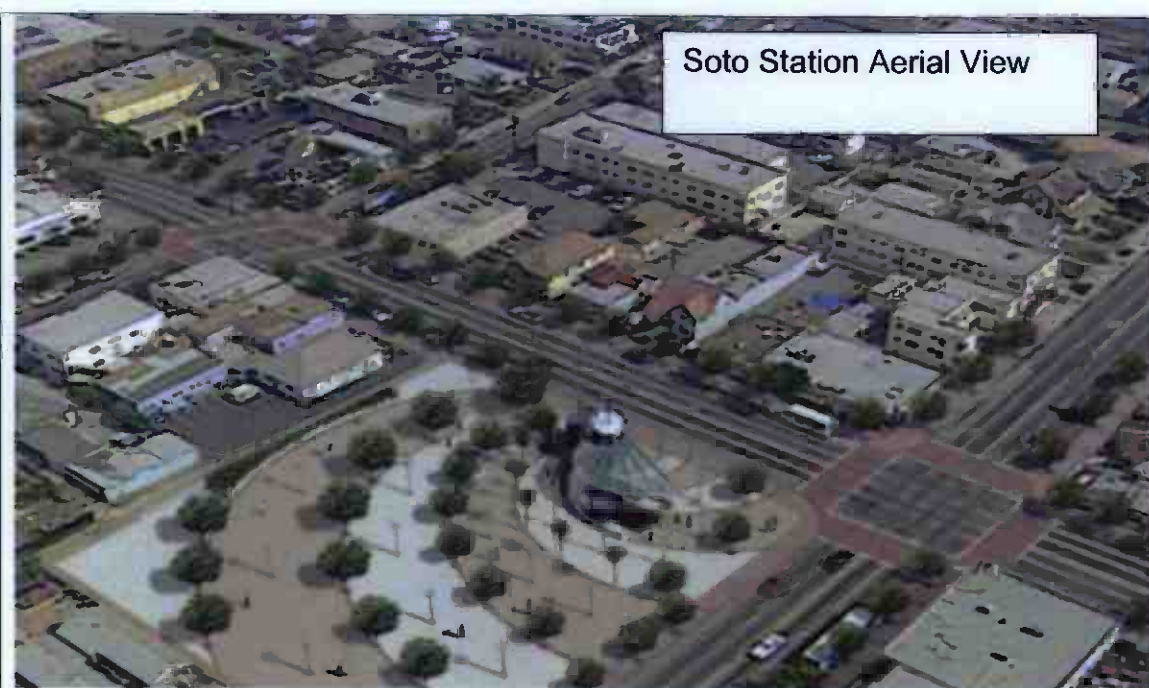


Little Tokyo/Arts District Station

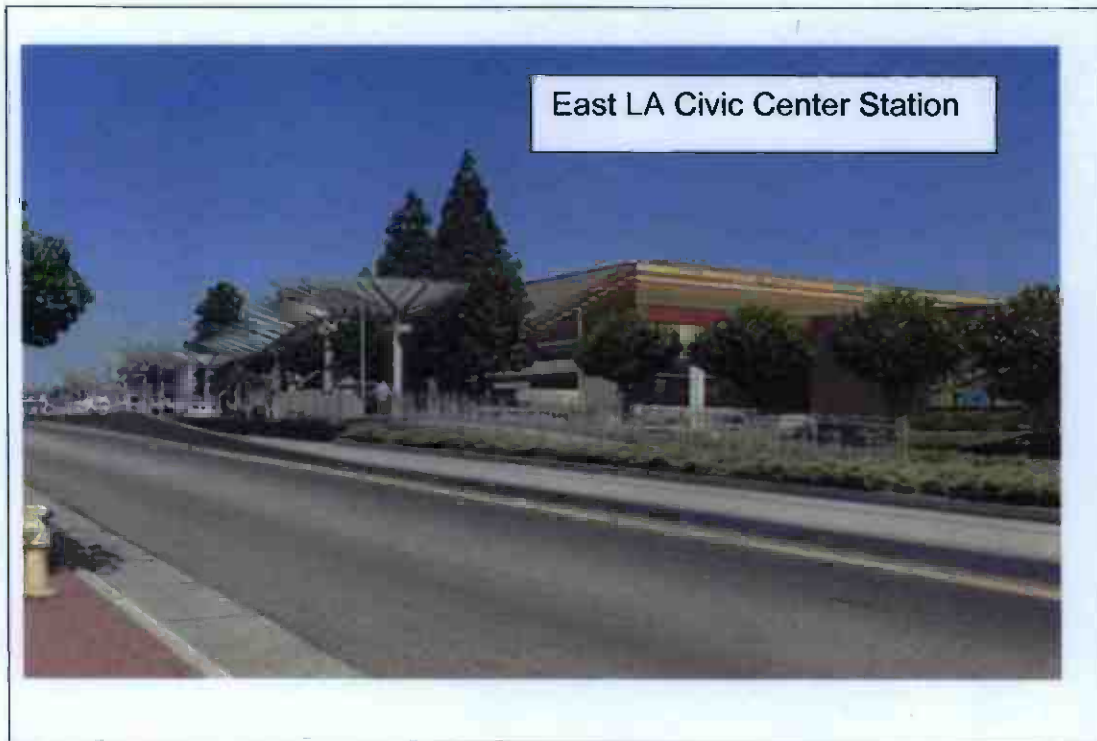
CURRENT PROJECT RENDERINGS



CURRENT PROJECT RENDERINGS



CURRENT PROJECT RENDERINGS



APPENDIX

COST AND BUDGET TERMINOLOGY

ESTIMATED PROJECT COSTS: Estimated project costs are based upon the current project cost estimates that are produced during the engineering design phase.

COMMITMENTS: The total of actual contract awards, executed change orders or amendments, approved work orders of Master Cooperative Agreements, offers accepted for purchase of real estate, and other LACMTA actions that will result in specific expenditures at a future time.

INCURRED COST: The total value of work performed to date of services received, and acquired materials or properties.

EXPENDITURES: The total dollar amount of checks written by LACMTA's Accounting department for contractor or consultant invoices, third party invoices, staff salaries, and closing payments for escrow accounts that is reported in LACMTA's Financial Information System (FIS).

CONSTRUCTION: Includes guideways, yards and shops, systems equipment, stations, and vehicles.

PROFESSIONAL SERVICES: Includes general engineering, construction management services, consultant design support services during construction, legal counsel, and agency (MTA staff) costs.

RIGHT-OF-WAY: Includes real estate appraisals, purchase cost of parcels, easements, right-of-entry permits, escrow fees, and tenant relocation.

UTILITY/AGENCY FORCE ACCOUNT: Includes work by outside agencies and utilities in design coordination and review.

CONTINGENCY: A fund established at the beginning of a project to provide for anticipated but unknown additional costs that may arise during the course of the project.

SPECIAL CONDITIONS: Includes utilities relocation, environmental compliance and mitigation, master cooperative agreements, insurance program, artwork, systems integration testing and pre-revenue operations.

APPENDIX

LIST OF ACRONYMS

AFE	Authorization For Expenditure
ATC	Automatic Train Control
CADD	Computer Aided Drafting and Design
CALTRANS	California Department of Transportation
CD	Calendar Day
CM	Construction Manager
CMAC	Congestion Mitigation Air Quality
CN	Change Notice
CO	Change Order
CPM	Critical Path Method
CPUC	California Public Utilities Commission
CR	Camera Ready
CTC	California Transportation Commission
CUD	Contract Unit Description
DB	Design/Build
DBB	Design/Bid/Build
DD	Design Development
DOT	Department of Transportation
DWP	Department of Water and Power
EIR	Environmental Impact Report
EIS	Environmental Impact Statement
EPBM	Earth Pressure Balance Machine
ESP	Eastside LRT Partners
FAR	Federal Acquisition Regulation
FD	Final Design
FEIS	Final Environmental Impact Statement
FEIR	Final Environmental Impact Report
FFGA	Full Funding Grant Agreement
FIS	Financial Information System
FSEIR	Final Supplemental Environmental Impact Report
FSEIS	Final Supplemental Environmental Impact Statement
FTA	Federal Transit Administration
FTE	Full Time Equivalent
GDSR	Geotechnical Design Summary Report
IFB	Invitation for Bid
IPO	Integrated Project Office
JV	Joint Venture
LA	Los Angeles
LABOE	Los Angeles Bureau of Engineering
LACFCD	Los Angeles County Flood Control District
LACMTA	Los Angeles County Metropolitan Transportation Authority
LADOT	Los Angeles Department of Transportation

APPENDIX

LIST OF ACRONYMS (Continued)

LADPW	Los Angeles Department of Public Works
LADWP	Los Angeles Department of Water and Power
LAUSD	Los Angeles Unified School District
LNTF	Limited Notice To Proceed
LONP	Letter Of No Prejudice
LRT	Light Rail Transit
L RTP	Long Range Transportation Plan
LRV	Light Rail Vehicle
MIS	Major Investment Study
MPSR	Monthly Project Status Report
MTA	Metropolitan Transportation Authority
N/A	Not Applicable
NEPA	National Environmental Protection Act
NPDES	National Pollution Discharge Elimination System
NTE	Not to Exceed
NTP	Notice To Proceed
OCIP	Owner-Controlled Insurance Program
P3	Primavera Project Planner® (scheduling software)
PC	Project Control
PE	Preliminary Engineering
PEER	Permit Engineering Evaluation Report
PGL	Pasadena Gold Line
PIP	Project Implementation Plan
PM	Project Manager
PMA	Project Management Assistance
PMIP	Project Management Implementation Plan
PMOC	Project Management Oversight Consultant
PMP	Project Management Plan (manual)
P&P	Policies & Procedures
PR	Project Report
PSR	Project Study Report
QA	Quality Assurance
QAR	Quality Assurance Report
QC	Quality Control
QPSR	Quarterly Project Status Report
RAC	Review Advisory Committee
RAG	Rail Activation Group
RFC	Request For Change
RFP	Request For Proposal
ROD	Record Of Decision
ROD	Revenue Operations Date
ROM	Rough Order of Magnitude

APPENDIX

LIST OF ACRONYMS (Continued)

ROW	Right-Of-Way
SCAQMD	Southern California Air Quality Management District
SCE	Southern California Edison
SCRRA	Southern California Regional Rail Authority
SHA	State Highway Account
SHPO	State Historic Preservation Office
SIT	System Integration Testing
SOV	Schedule Of Value
SOW	Statement Of Work
SP	Special Provision
STIP	State Transportation Improvement Program
STP	Surface Transportation Program
TBD	To Be Determined
TBM	Tunnel Boring Machine
TCRP	Traffic Congestion Relief Program
TPSS	Traction Power Substation
TRACS	Transit Automatic Control System
UFS	Universal Fare System
USDOT	U.S. Department Of Transportation
VE	Value Engineering
WBS	Work Breakdown Structure
WP	Work Package