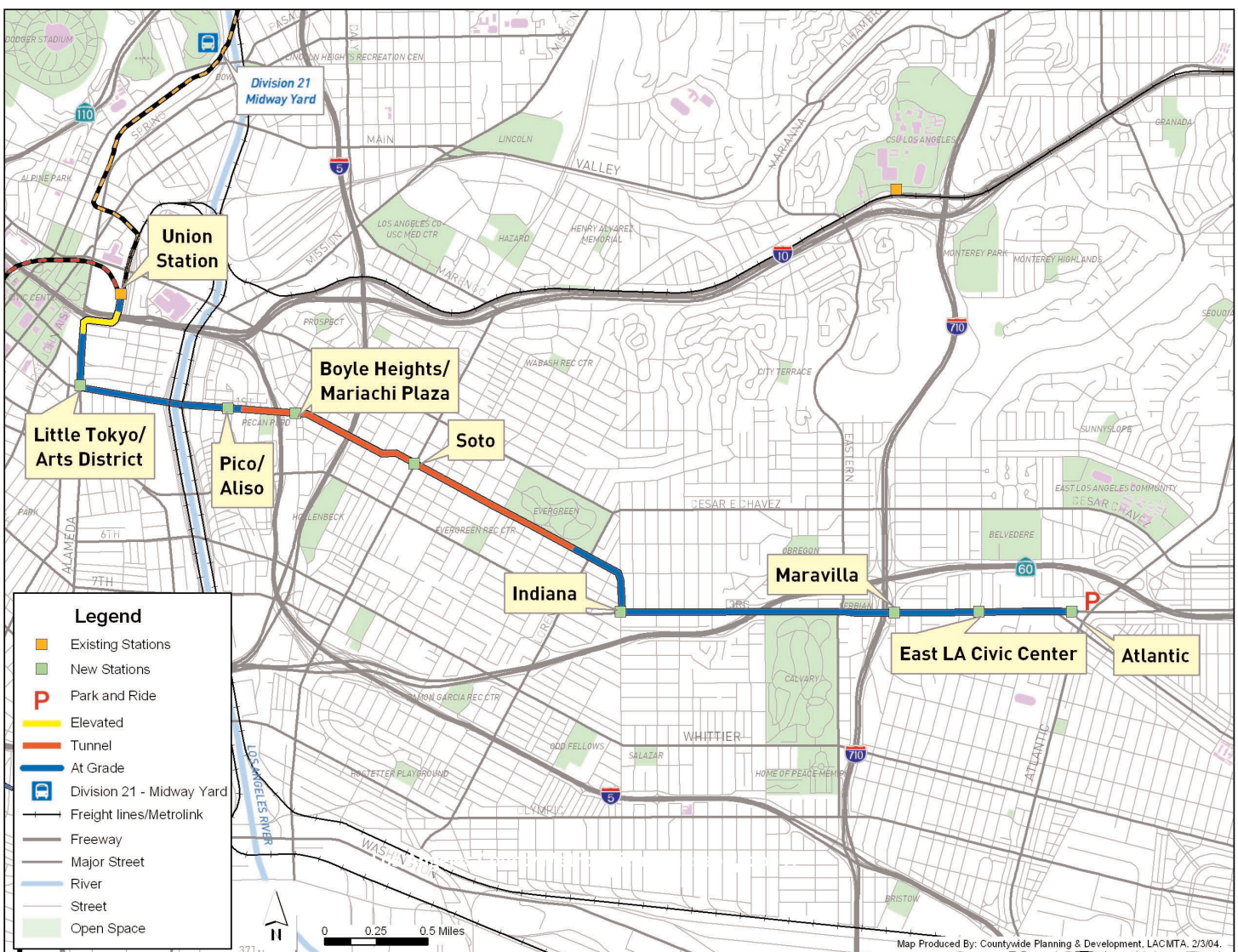


MONTHLY PROJECT STATUS REPORT

Metro Gold Line Eastside Extension



METRO GOLD LINE EASTSIDE EXTENSION

MONTHLY PROJECT STATUS REPORT

THE PREPARATION OF THIS DOCUMENT HAS BEEN FINANCED IN PART THROUGH A GRANT FROM THE U. S. DEPARTMENT OF TRANSPORTATION, FEDERAL TRANSIT ADMINISTRATION (FTA), UNDER THE FEDERAL TRANSIT ACT OF 1964, AS AMENDED, AND FUNDS FROM THE STATE OF CALIFORNIA.

JULY 2005

TABLE OF CONTENTS

	Page No.
Project Overview.....	1
Management Issues.....	2
Project Status	
• Project Scope.....	3
• Schedule	
○ Key Milestones Six-Month Lookahead	4
○ Project Master Schedule Critical Path.....	5-9
○ Critical Path Narrative	10-11
• Project Cost Status.....	12-13
• Financial/Grant Status.....	14-15
• Staffing.....	16-17
• Real Estate.....	18
• Environmental.....	19
• Community Relations.....	19
• Quality Assurance.....	19
• Safety.....	20
• Art Development.....	20
• Third Party.....	21-22
• CPUC Crossing.....	23
Contract C0802 Status	24
Contract C0803 Status	25
Contract P2550 Status	26
Construction Photographs	27-28
Appendices.....	29-32

PROJECT OVERVIEW

The Metro Gold Line Eastside Extension Project is a six-mile, dual track light rail system with eight new stations and one station modification. The system originates at Union Station in downtown Los Angeles, where it connects with the Pasadena Gold Line, traveling generally east to Pomona and Atlantic Boulevards. The system will bridge State Route 101 Freeway and traverse the existing 1st Street Bridge over the Los Angeles River. The system will travel south on Alameda Street and then east on 1st Street with two stations at Alameda and Utah Streets. East of the Los Angeles River and 1st and Utah Streets, the alignment transitions to tunnel for approximately 1.7 miles, and continues beneath 1st Street to underground stations at 1st Street and Boyle Avenue and 1st Street and Soto Street. The alignment returns to the surface near the intersection of 1st Street and Lorena Streets, then jogs to the south, transitioning to follow 3rd Street with stations at Indiana Street, Ford Boulevard, Mednik Avenue and Pomona and Atlantic Boulevards.

As of the end of this reporting period; the schematic design packages for the Maravilla Station and East LA Civic Center Station; the 85% design packages for the Little Tokyo/Art District Station and Pico/Aliso Station; the initial civil design packages for Segments 2B and 4; and the 60% systems design packages were submitted for Metro's review. Segments 1, 2A, 3A, 5, 6 and 7 85% civil designs are underway. Boyle Station 100% final design, Soto Station and Atlantic Station 85% final designs, and Segment-3B initial civil design are in progress. The 85% Final Designs for traction power, overhead contact, train control and communications systems are also in progress.

One additional grade crossing application has been submitted to the California Public Utilities Commission (CPUC) for review since the last report. The crossing is at 3rd Street and Ditman Avenue. Thirty-six of 42 grade crossings have been approved.

At the Boyle Heights/Mariachi Plaza Station, the fourth level excavation continued through the end of the month. The contractor presented a recovery plan to mitigate the schedule delays encountered with the station excavation activities. The plan demonstrates the contractor's re-sequencing efforts in completing the remaining Boyle Station excavation, grounding mat, sub-invert and invert slabs to mitigate the schedule delay. The majority of the sub-invert and invert slabs are now scheduled to complete prior to the arrival of the tunnel boring machines. Ongoing excavation activities are on schedule with the recovery plan.

Deck beam fabrication for Soto Station continued during the month and installation of deck beams and temporary street decking will commence on the first weekend of August 2005.

Utility relocations at Soto Station, East and West Portals, and along 3rd Street are continuing.

Major equipment for tunneling work continues to be delivered and installed at the 1st/Boyle staging area. The two Earth Pressure Balance Machines (EPBMs) are scheduled to be shipped from Germany in mid-August 2005. Final assembly and installation will occur in Fall 2005 at the 1st/Boyle tunnel access shaft.

The Caltrans contractor for Contract C0802 – 101 Freeway Bridge Overcrossing continued with roadway construction on Commercial Street and the US-101 Freeway on and off ramps.

MANAGEMENT ISSUES

No Management Issues for the period ending July 2005.

PROJECT SCOPE

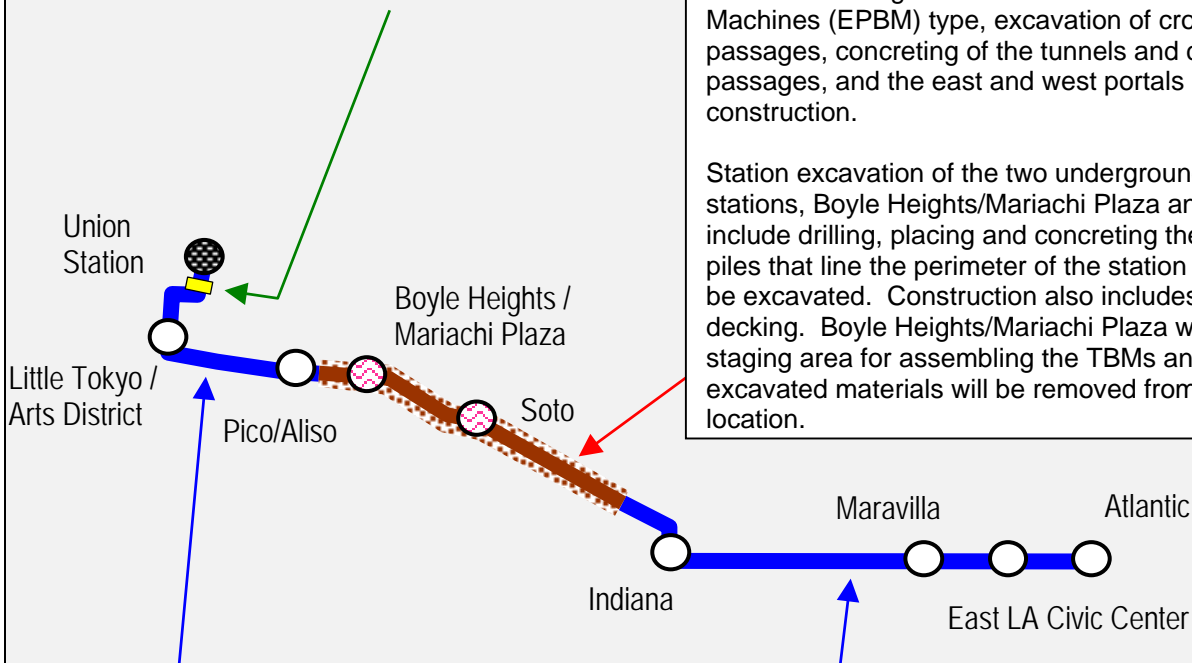
Contract C0802 – 101 Freeway Bridge

Overcrossing: The construction of the bridge is combined with Caltrans freeway improvements project. While Caltrans will administer the construction, the LACMTA will provide oversight and is responsible for the construction costs of the bridge overcrossing.

Contract C0803 - Tunnel and Station

Excavation (Design/Bid/Build): Construction of the 1.7 mile tunnel segment includes tunnel excavation using two Earth Pressure Balance Machines (EPBM) type, excavation of cross passages, concreting of the tunnels and cross passages, and the east and west portals construction.

Station excavation of the two underground stations, Boyle Heights/Mariachi Plaza and Soto, include drilling, placing and concreting the soldier piles that line the perimeter of the station box to be excavated. Construction also includes street decking. Boyle Heights/Mariachi Plaza will be the staging area for assembling the TBMs and all excavated materials will be removed from this location.







Contract C0803 - Stations, Trackwork, and Systems (Design/Build): Construction of the two underground stations includes structural walls, station platforms, mezzanines, station entrances, and plazas, architectural finishes and all related mechanical and electrical work.



Construction of the six-mile alignment includes six at-grade stations, trackwork installation and testing for the entire alignment.

Systems installation and testing is inclusive of power systems, automatic train control, fire and emergency management, TRACS and communications systems. The contractor will be responsible for systems integration testing for the entire line segment prior to pre-revenue operations.

KEY MILESTONE SCHEDULE SIX-MONTH LOOKAHEAD

	Milestone Date	Jul-05	Aug-05	Sep-05	Oct-05	Nov-05	Dec-05
Submitted Schematic Design - Maravilla Station	7/1/05	○					
Submitted Civil Initial Design - Segments 2B & 4	7/19/05	○					
Completed East Portal Soldier Pile Installation	7/20/05 *	○					
Submitted 85% Design - Little Tokyo Station & Pico/Aliso Station	7/22/05 *	○					
Commenced West Portal Soldier Pile Installation	7/27/05 *	○					
Submitted OCS/Communication 60% Design	7/29/05 *	○					
Submitted Schematic Design -East LA Civic Center Station	7/29/05 *	○					
Submitted Traction Power/Train Control 60% Design	7/29/05	○					
Commence Soto Station Temporary Street Decking	8/5/05		○				
Commence Boyle Station Grounding Mat	8/10/05 *		○				
Commence Boyle Station Sub-Invert Concrete (Partial)	8/15/05 *		○				
Submit 85% Civil Design-Segments 6 & 7	8/15/05 *		○				
Complete Boyle Station Box Excavation	8/19/05 *		○				
Submit Boyle Station 100% Design	8/22/05 *		○				
Commence Soto Station Level-1 Excavation	8/24/05		○				
Submit Soto Station 85% Design	8/29/05 *		○				
Delivery of Tunnel Boring Machines	10/1/05				○		
Unload & Begin Assembly of EPBM No. 1 (Eastbound Tunnel)	10/14/05 *				○		
Unload & Begin Assembly of EPBM No. 2 (Westbound Tunnel)	10/21/05 *				○		
Commence Testing of EPBM No. 1 at Boyle Station	11/4/05 *					○	
Commence Tunnel Mining (Eastbound)	12/6/05						○

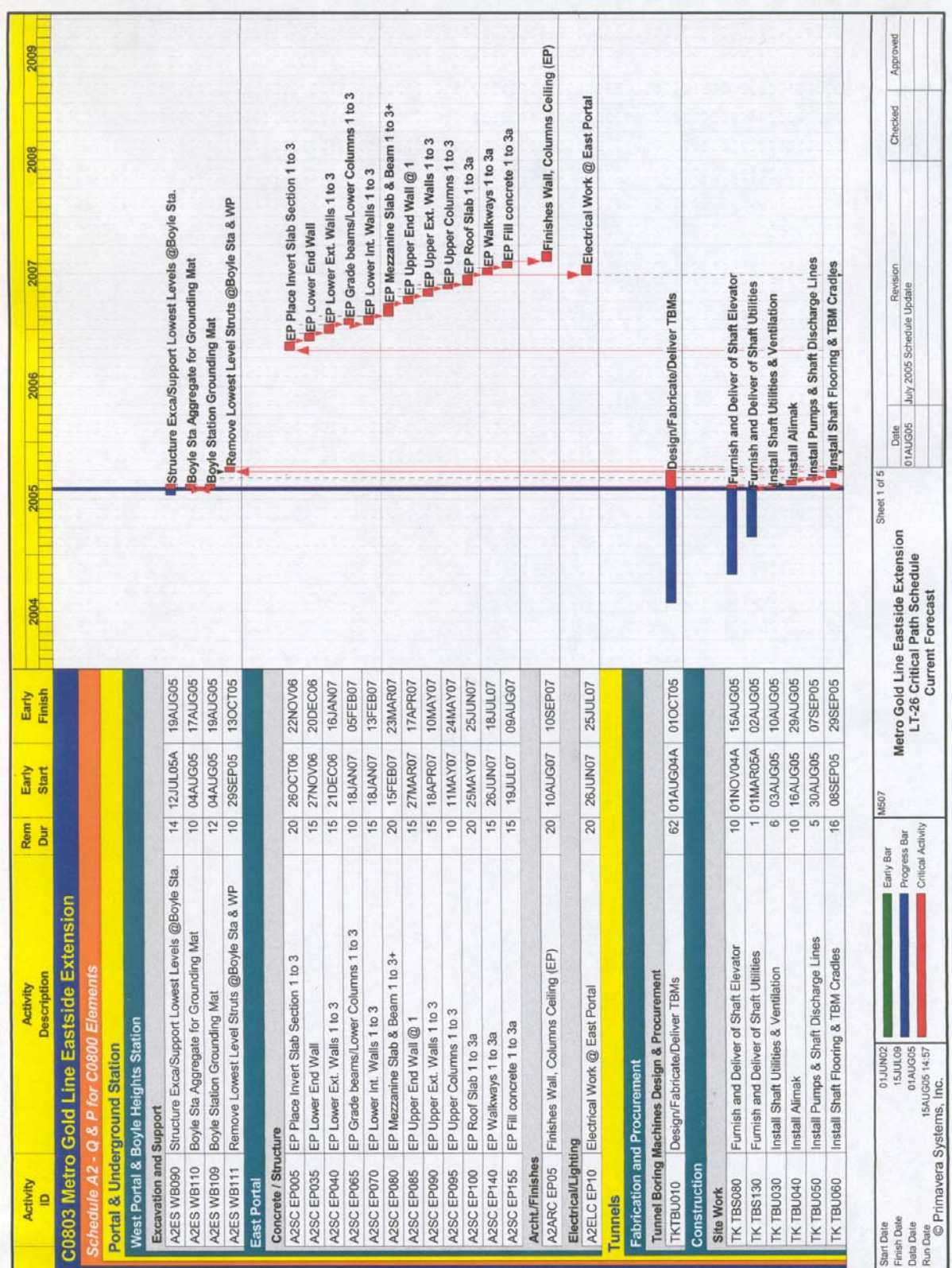
 LACMTA Staff Milestone
 Eastside LRT Constructors
 Other Agencies
 New Date

 FTA
 Metro

FTA Approval

LACMTA Board Approval

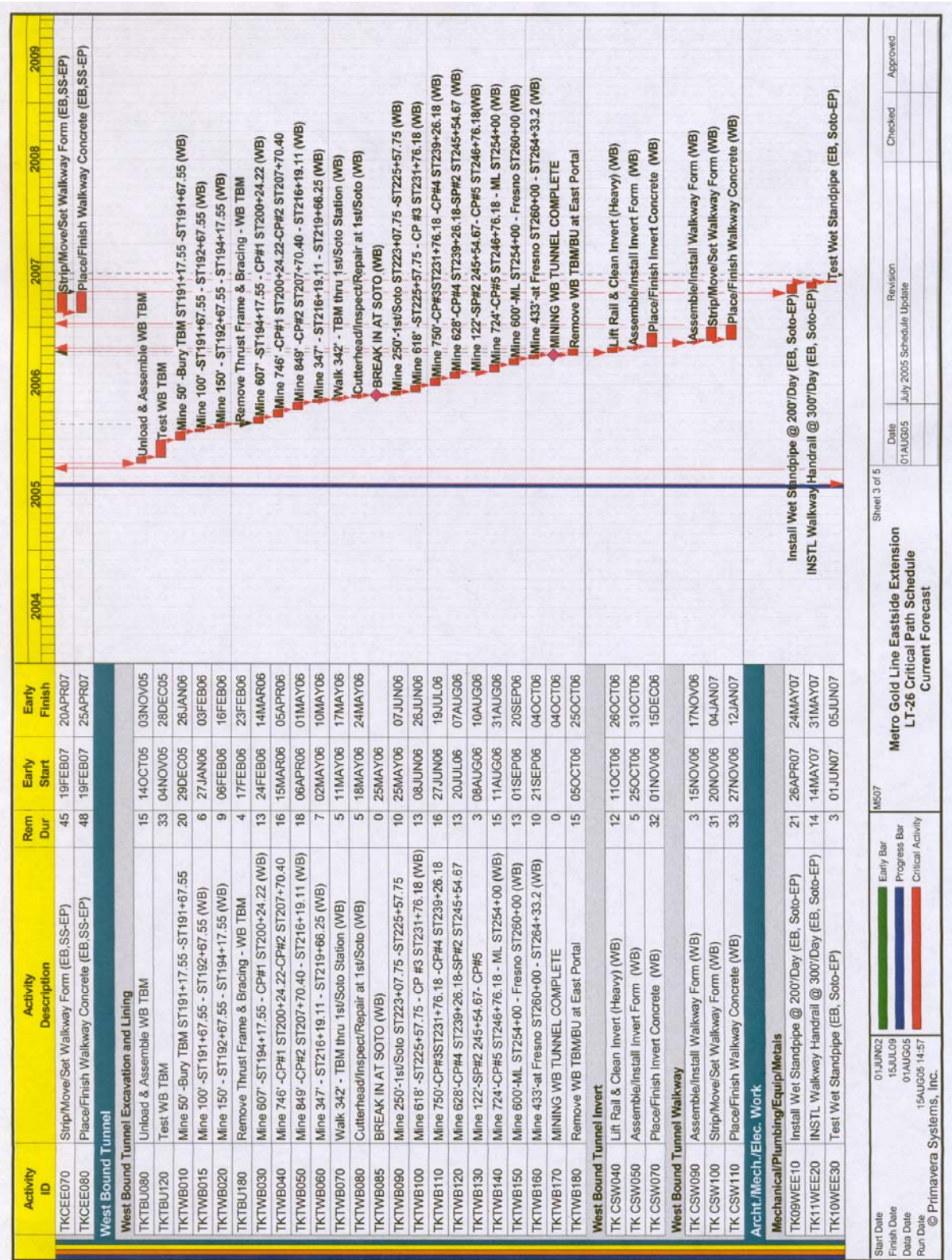
PROJECT MASTER SCHEDULE CRITICAL PATH (1 of 5)



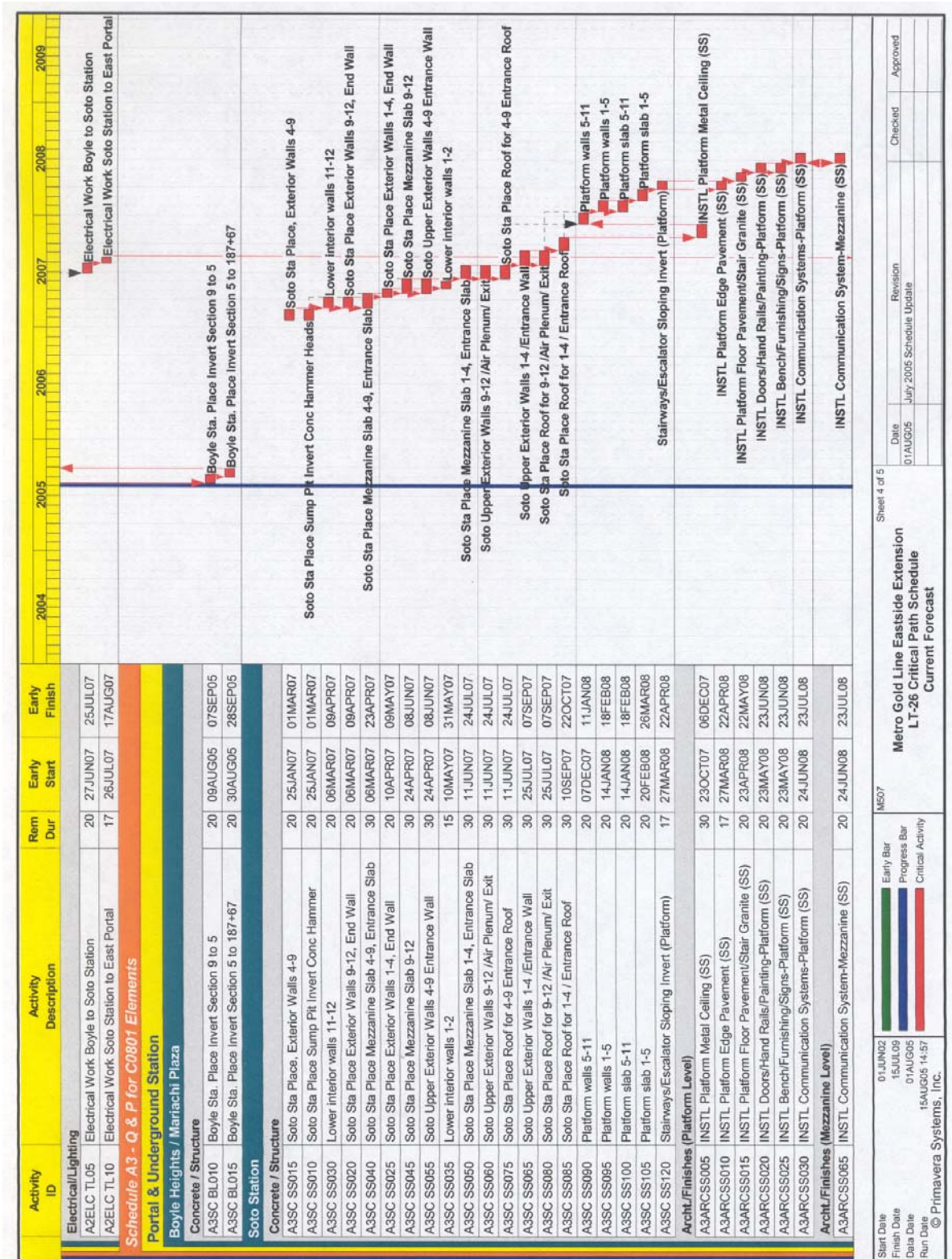
PROJECT MASTER SCHEDULE CRITICAL PATH (2 of 5)



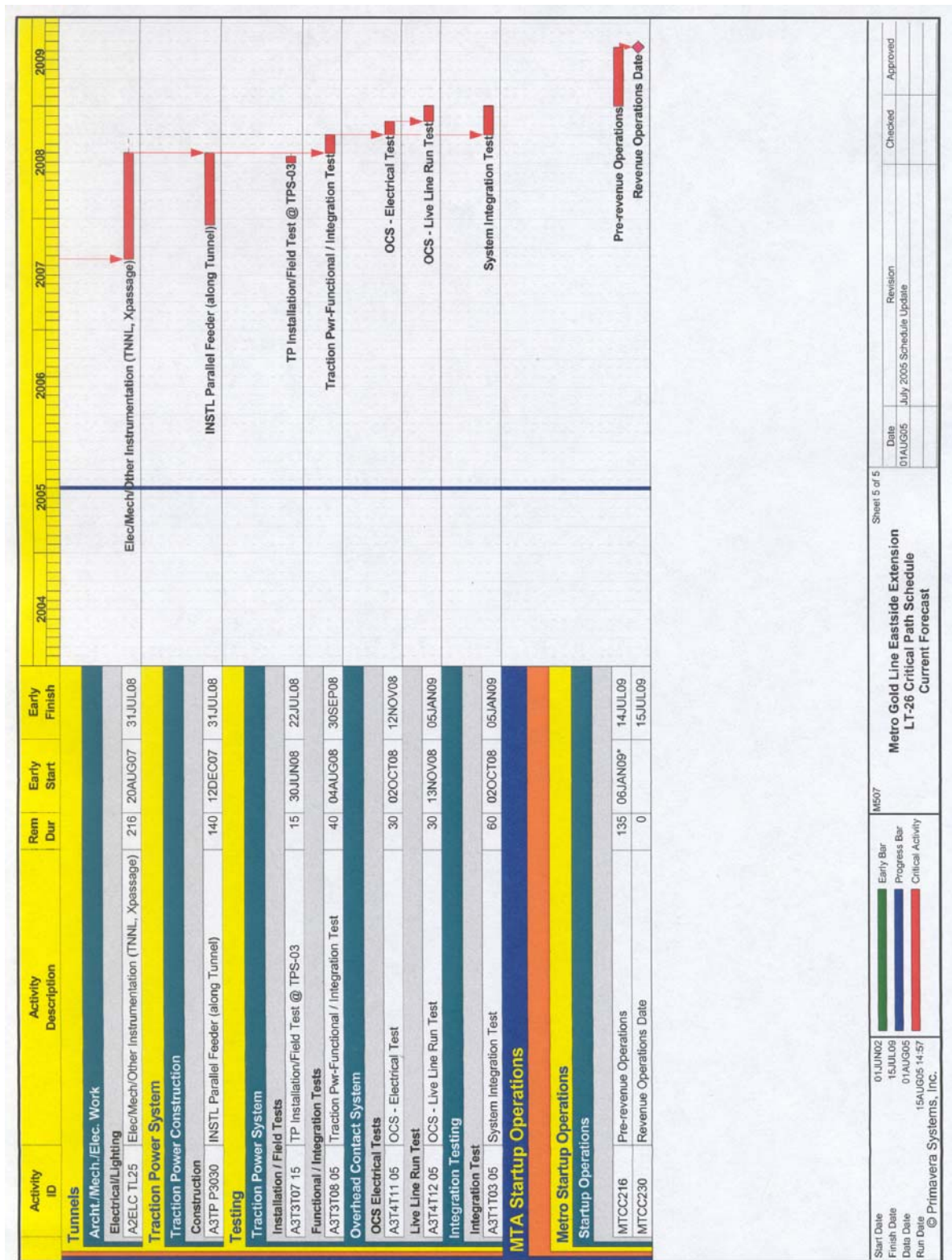
PROJECT MASTER SCHEDULE
CRITICAL PATH (3 of 5)



PROJECT MASTER SCHEDULE CRITICAL PATH (4 of 5)



PROJECT MASTER SCHEDULE CRITICAL PATH (5 of 5)



CRITICAL PATH NARRATIVE

Current Critical Path Analysis

The delivery of two Earth Pressure Balance Machines (EPBMs) and the Boyle Station structural excavation are on the critical path. Concurrent with these activities, the project has proceeded with other critical tasks such as utility relocations, ground treatments, soldier pile installation, deck beam fabrication, temporary street decking and traffic control at Soto Station, East Portal and West Portal.

The Boyle Station structural excavation and shoring system installation are anticipated to finish in late-August 2005. The grounding mat and portions of invert and sub-invert are scheduled to begin in mid-August 2005 and to complete prior to the arrival of EPBMs. The two EPBMs have been tested and will be shipped from Germany mid-August 2005 for final assembly and installation at Boyle Station in Fall 2005. The East Portal soldier pile installation was completed on July 20, 2005 followed by soldier pile installation at the West Portal.

The critical path continues with EPBM assemblies, excavation of both tunnels, excavation of crosspassages and tunnel invert construction. The critical path then follows Boyle and Soto Stations construction and the installations of trackwork and overhead contact system for the underground alignment. The system equipment installation such as overhead contact system, train control, traction power, and local facilities testing are the last stage of the critical path prior to entering the final test stage, where systems integration testing and pre-revenue operations are conducted.

Design

During this reporting period, schematic designs for Maravilla Station and East LA Civic Center Station, 85% designs for Little Tokyo/Arts District Station and Pico/Aliso Station, the initial civil designs for Segments 2B and 4, and the 60% systems design (traction power, OCS, train control, and communication) were submitted for Metro's review. The following facility design packages and the system design packages are in progress:

- Facility Design Packages:
 1. Boyle Station 100% design,
 2. Soto Station 85% design,
 3. Atlantic Station 85% design,
 4. Segment 3B initial civil design, and
 5. 85% civil design for Segments 1, 2A, 3A, 5, 6 and 7.

CRITICAL PATH NARRATIVE

- System Design Packages:
 1. Traction power 85% design,
 2. Overhead contact system 85% design,
 3. Train control system 85% design, and
 4. Communication system 85% design.

Construction

At Boyle Station, the fourth level excavation continued through the end of the month and the surface equipments installation continued at the Bailey and Bodie yards. In the month of July 2005, the contractor presented a recovery plan to mitigate schedule delays in Boyle Station excavation activities. The plan demonstrates the contractor's re-sequencing efforts in completing the remaining Boyle Station excavation, grounding mat, sub-invert and invert slabs to mitigate the schedule delays. The majority of invert and sub-invert are now scheduled to complete prior to the arrival of the EPBMs.

Deck beam fabrication for Soto Station continued during the month and the installation of deck beams and temporary street decking is scheduled for early August 2005.

Street widening work began in early June 2005 at the East Portal area, including the demolition behind the existing crematorium retaining wall. The Phase-2 soldier pile installation began in mid-June 2005 and finished in late July 2005. The East Portal temporary street decking system is scheduled to occur after the completion of West Portal street decking system.

Utility relocations continue at Soto Station, West and East Portals, and along the Third Street alignment.

The Caltrans contractor for Contract C0802 – 101 Freeway Bridge Overcrossing continued with roadway construction on Commercial Street and the US-101 Freeway on and off ramps.

PROJECT COST STATUS

COST REPORT BY ELEMENT ORIGINAL SCOPE ACTIVITIES

DOLLARS IN THOUSANDS

ELE- MENT	DESCRIPTION	ORIGINAL BUDGET	CURRENT BUDGET		COMMITMENTS		EXPENDITURES		CURRENT FORECAST		BUDGET / FORECAST VARIANCE
			PERIOD	TO DATE	PERIOD	TO DATE	PERIOD	TO DATE	PERIOD	TO DATE	
C	CONSTRUCTION	633,221	-	662,391	2,040	641,264	8,177	160,102	-	662,391	-
S	SPECIAL CONDITIONS	19,494	-	20,329	(42)	14,930	760	9,646	-	20,329	-
R	RIGHT-OF-WAY	40,358	-	41,742	853	41,563	927	35,610	-	41,742	-
P	PROFESSIONAL SERVICES	135,304	-	135,936	7,462	97,340	1,040	74,088	-	135,936	-
PC	PROJECT CONTINGENCY	60,254	-	28,249	-	-	-	-	-	28,249	-
PR	PROJECT REVENUE	(4,617)	-	(4,633)	-	-	-	(16)	-	(4,633)	-
SUBTOTAL		884,014	-	884,014	10,312	795,097	10,903	279,429	-	884,014	-
PF	PROJECT FINANCE COST	14,800	-	14,800	-	-	-	-	-	14,800	-
TOTAL		898,814	-	898,814	10,312	795,097	10,903	279,429	-	898,814	-

NOTE: EXPENDITURES ARE CUMULATIVE THROUGH JUNE 2005

PROJECT COST ANALYSIS

Original Budget

The Full Funding Grant Agreement (FFGA) was adopted June 1, 2004 in the amount of \$898.8 million. The Original Budget reflects the adopted FFGA.

Current Budget and Current Forecast

The total Current Budget and Forecast remains the same at \$898.8 million.

Commitments

The Commitments increased by \$10.3 million this period due to negotiated cost for the Universal Fare System and the FY06 LACMTA Board approved budgets. The \$795.1 million in Commitments to date represents 88.5% of the Original Budget.

Expenditures

Expenditures are cumulative through June 2005. The Expenditures increased by \$10.9 million this period primarily due to construction costs associated to Contract C0803 – Tunnel, Stations, Trackwork, and Systems. The \$279.4 million in Expenditures to date represents 31.1% of the Original Budget.

PROJECT COST STATUS

COST REPORT BY ELEMENT

CONCURRENT NON-FFGA PROJECT ACTIVITIES
DOLLARS IN THOUSANDS

ELE- MENT	DESCRIPTION	ORIGINAL BUDGET	CURRENT BUDGET		COMMITMENTS		EXPENDITURES		CURRENT FORECAST		BUDGET / FORECAST VARIANCE
			PERIOD	TO DATE	PERIOD	TO DATE	PERIOD	TO DATE	PERIOD	TO DATE	
C	CONSTRUCTION	18,000	-	18,000	1,785	6,367	-	-	-	18,000	-
S	SPECIAL CONDITIONS	-	-	-	-	-	-	-	-	-	-
R	RIGHT-OF-WAY	-	-	-	-	-	-	-	-	-	-
P	PROFESSIONAL SERVICES	-	-	-	-	-	-	-	-	-	-
PC	PROJECT CONTINGENCY	-	-	-	-	-	-	-	-	-	-
PR	PROJECT REVENUE	-	-	-	-	-	-	-	-	-	-
SUBTOTAL		18,000	-	18,000	1,785	6,367	-	-	-	18,000	-
PF	PROJECT FINANCE COST	-	-	-	-	-	-	-	-	-	-
TOTAL		18,000	-	18,000	1,785	6,367	-	-	-	18,000	-

NOTE: EXPENDITURES ARE CUMULATIVE THROUGH JUNE 2005

PROJECT COST ANALYSIS

Original Budget

The Original Budget of \$18.0 million was adopted by the Metro Board on March 24, 2005.

Current Budget and Current Forecast

The Current Budget and Forecast remains the same at \$18.0 million.

Commitments

The Commitments increased by \$1.8 million for this period due to an executed contract modification for the Universal Fare System. The \$6.4 million in Commitments to date represents 35% of the Original Budget.

Expenditures

There are no Expenditures for this period.

FINANCIAL/GRANT STATUS – ORIGINAL SCOPE ACTIVITIES

JULY 2005

STATUS OF FUNDS BY SOURCE

in \$ millions

SOURCE	(A) ORIGINAL BUDGET	(B) TOTAL FUNDS ANTICIPATED	(C) TOTAL FUNDS AVAILABLE	(D) COMMITMENTS \$	(D/B) %	(E) EXPENDITURES \$	(E/B) %	(F) BILLED to FUNDING SOURCE \$	(F/B) %
FEDERAL - SECTION 5309 NEW START	490.7	490.7	17.3	428.1	87%	76.8	16%	17.3	4%
FED - SECTION 5309 FIXED GUIDEWAY	23.1	12.0	3.0	3.0	25%	3.0	25%	3.0	25%
FEDERAL - CMAQ	10.3	10.3	10.3	10.3	100%	10.3	100%	10.3	100%
REGIONAL IMPROVMNT PROG-FED	179.6	179.6	4.6	179.6	100%	4.6	3%	4.6	3%
REGIONAL IMPROVM PROG-STATE	0.6	0.6	0.6	0.6	100%	0.6	100%	0.6	100%
STATE TCRP	45.0	45.0	45.0	45.0	100%	45.0	100%	45.0	100%
PROP A 35% / PROP C 40% BONDS	124.6	135.7	109.1	118.4	87%	109.1	80%	109.1	80%
LEASE REVENUES	10.1	10.1	10.1	10.1	100%	10.1	100%	10.1	100%
ACCRUALS						20.0			
SUB-TOTAL	884.0	884.0	200.0	795.1	90%	279.5	32%	200.0	23%
PROP A/PROP C (INTEREST COST)	14.8	14.8	0.0	0.0	0%	0.0	0%	0.0	0%
TOTAL	898.8	898.8	200.0	795.1	88%	279.5	31%	200.0	22%

NOTE: EXPENDITURES ARE CUMULATIVE THROUGH JUNE 2005.

STATUS OF FUNDS ANTICIPATED

FEDERAL SECTION 5309 NEW STARTS: LACMTA received an appropriation of \$59.5M for FY05. A grant application has been submitted to FTA and is awaiting approval. However, because Congress didn't approve the Reauthorization Bill at the time of LACMTA's request, only \$39.1M is currently available. The grant is expected to be approved in August 2005. A grant amendment for the balance will be submitted upon approval of the Reauthorization Bill.

FEDERAL SECTION 5309 FIXED GUIDEWAY: LACMTA submitted in June 2005 a grant application for \$2,985,500. The grant was approved on July 13, 2005 and funds are now available for drawdown.

FEDERAL CMAQ: LACMTA submitted in June 2005 a grant application for \$10,276,000. The grant was approved on July 13, 2005 and funds are now available for drawdown.

RIP-FEDERAL: LACMTA submitted a request for an AB 3090 reimbursement allocation of \$43.6 million in STIP funds to the CTC for consideration at their July 2005 meeting. The CTC approved the request. Supplemental agreements are in the process of being executed.

STATE TCRP: On April 3, 2003 the California Transportation Commission approved LACMTA's request to amend the STIP to convert \$191 million of unallocated TCRP funds to STIP funds. On August 25, 2003, LACMTA submitted a request for AB1335 Letter of No Prejudice (LONP) authority for Phase 4 construction activities. On March 2005, LACMTA resubmitted a request for approval of a LONP for \$189.2M for Phase 4 (Construction) to the CTC for consideration at the May 2005 CTC Meeting. The CTC approved the LONP for \$166.9 million.

FINANCIAL/GRANT STATUS
CONCURRENT NON-FFGA PROJECT ACTIVITIES

JULY 2005

STATUS OF FUNDS BY SOURCE

in \$ millions

SOURCE	(A) ORIGINAL BUDGET	(B) TOTAL FUNDS ANTICIPATED (1)	(C) TOTAL FUNDS AVAILABLE	(D) COMMITMENTS \$	(D/B) %	(E) EXPENDITURES \$	(E/B) %	(F) BILLED to FUNDING SOURCE \$	(F/B) %
FEDERAL - CMAQ	14.0	14.0		2.4	17%		0%		0%
PROP A 35% / PROP C 40% BONDS	4.0	4.0		4.0	100%		0%		0%
ACCRUALS									
TOTAL	18.0	18.0	0.0	6.4	36%	0.0	0%	0.0	0%

(1) Based on March 2005 Board Report.

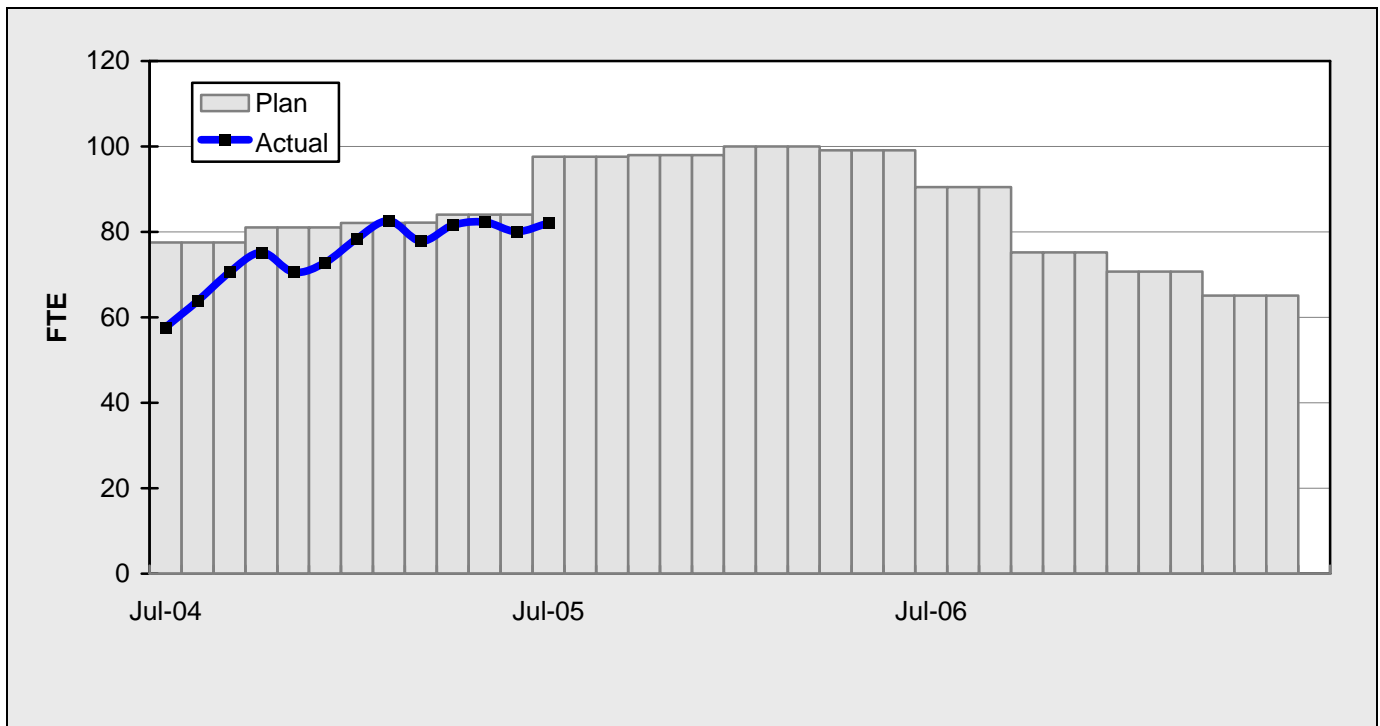
NOTE: EXPENDITURES ARE CUMULATIVE THROUGH JUNE 2005.

STATUS OF FUNDS ANTICIPATED

FEDERAL CMAQ: LACMTA submitted a grant application to the FTA on June 2005 for \$9.9 million. FTA is questioning the use of federal funds on this project. LACMTA is working on resolving this issue.

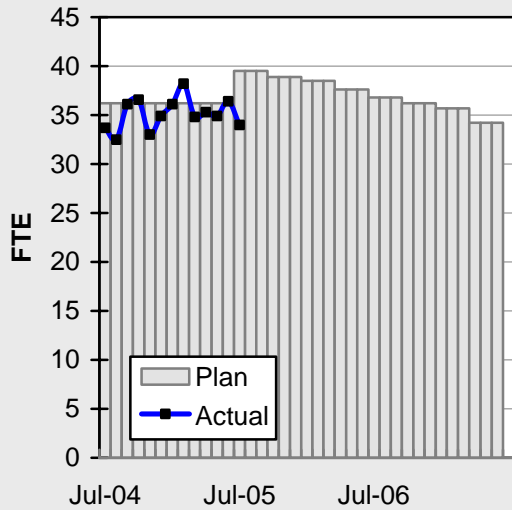
STAFFING STATUS

TOTAL PROJECT STAFFING

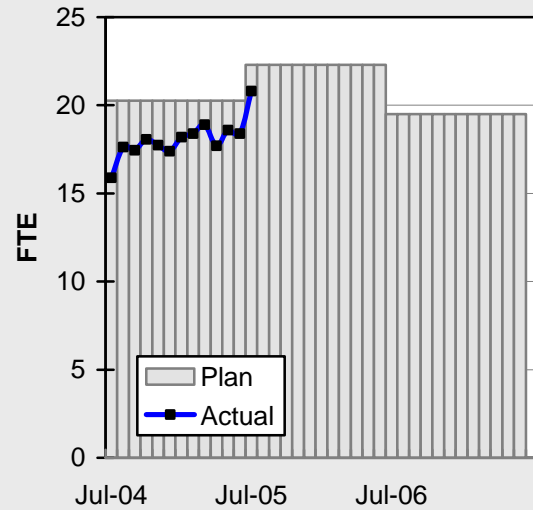


STAFFING STATUS

DIRECT AGENCY STAFFING

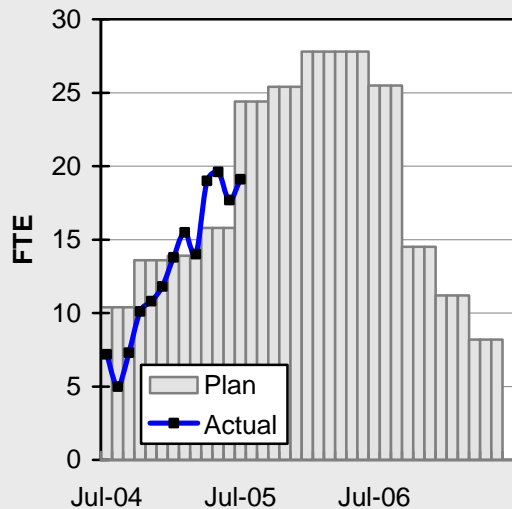


INDIRECT AGENCY STAFFING

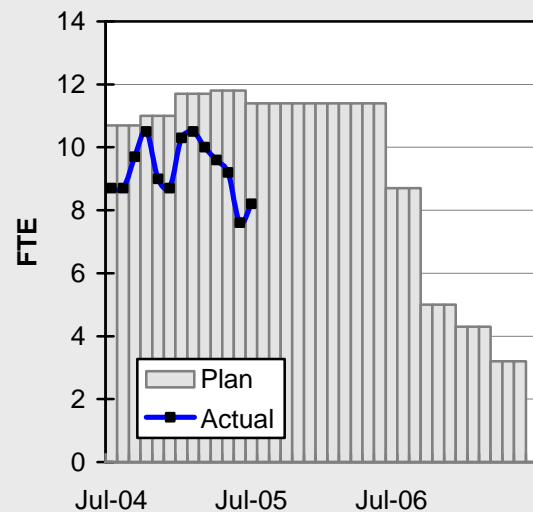


* For fiscal year 2005, indirect staffing levels are no longer part of overhead costs.

CONSTRUCTION MANAGEMENT



ELRT PARTNERS



REAL ESTATE STATUS

- For C0803, the tunnel portion of the alignment, 40 parcels are required for acquisition (11 full takes, 4 partial takes, 20 sub-surface easements/temporary construction easements, 3 sub-surface easements/building protection, and 2 building protections).
- For C0803, the at-grade portion of the alignment, 27 parcels are required for acquisition (17 full takes, 9 partial takes and 1 surface easement). Nine parcels have been identified for the proposed Ramona High School site reconfiguration.
- For C0802, 2 parcels are required (1 surface easement and 1 full take parcel).
- Sixty-nine parcels have been certified, 40 for C0803-Tunnel, 27 for C0803-At-Grade and 2 for C0802. Offers have been made to 66 property owners. A total of 56 parcels have been acquired (37 under C0803-Tunnel, 17 under C0803-At-Grade, and 2 under C0802). Real Estate is in negotiations with the other property owners.
- Third Party Administration has obtained two Encroachment Permits from Caltrans for C0803-Tunnel. All three (3) street closures have been obtained from the City of LA.

REAL ESTATE ACQUISITION SCHEDULE SUMMARY

<i>Number of Parcels</i>	Required	Acquired	On Schedule	Behind Schedule	
				Number	Avg. Calendar Days
This Period	69	56	13	0	0
Last Period	69	56	13	0	0

**REAL ESTATE STATUS TO DATE BY CONTRACT
ACQUISITION PHASE**

CONTRACT NO.	Number of Parcels (A+B+C+D+E)	Agreements Signed (A)	Parcels in Condemnation (B)	Under Negotiation (C)	In Appraisal Process (D)	Inactive Parcels (E)	Parcels Available
C0803-Tunnel	40	37	0	3	0	0	37*
C0803-At-Grade	27	17	0	9	0	1**	17
C0802	2	2	0	0	0	0	2
TOTAL	69	56	0	12	0	1	56
LAST PERIOD	69	56	0	12	0	1	56

* Includes 4 properties acquired under condemnation plus 33 escrows that were closed

** Parcel ES-604 Ramona High School (portion to be acquired)

ENVIRONMENTAL STATUS

- Held meetings with the RAC Executive Committee and the Eastside Community to present findings from the Crematorium.
- Held meetings with Los Angeles County Supervisor's Office and Crematorium staff to discuss history of burials and to review logbooks stored in the Crematorium chapel.
- Project archeologist, Cogstone Resources, continued to recover human bone fragments and burial remains from the excavated soils.
- Removed contaminated soil from Soto Station.
- Received Demolition Plan for 1st and Indiana parcel.
- Provided Quarterly Discharge Monitoring Report to the Water Board.

COMMUNITY RELATIONS STATUS

- Held project briefings for the Review Advisory Committee, Executive Review Advisory Committee, Maravilla Community Advisory Committee and Adelante PAC Outreach Subcommittee Chair.
- Coordinated installation of extensometers and settlement markers at structures along the tunnel alignment.
- Coordinated construction easement needs for property at 3rd and McDonnell.
- Conducted project alignment tour for LA Business Journal.

QUALITY ASSURANCE STATUS

- Continued reviewing Welder Qualification Test Records to support decking operations as well as structural steel fabrications at the Ducommun Yard.
- Audit findings issued to ELRTC for document control and Quality Control inspection documentation from the prior reporting period were resolved.

SAFETY STATUS

- Participated in weekly progress meetings with construction management and ELRTC personnel to discuss safety related issues and construction schedule.
- Participated in Contractor's Tool Box Safety meeting.
- Conducted All Hands Safety Meeting.
- Monitored construction activities on a daily basis to ensure safety compliance.
- Participated in Third Party Utility Meeting to discuss safety related issues and construction schedule.
- Participated in Cal/OSHA Variance Hearing regarding C0800 tunnel activities.
- ELRTC reported two (2) restrictive duty incidents for the month of July 2005. Project-to-date: 381,470 man-hours worked with five (5) Days Away cases.

ART DEVELOPMENT STATUS

First/Boyle Construction fence mural

- Design presented at RAC Meeting.
- Requested fence color paint samples from Contractor.

First/Soto Construction fence mural

- Design presented at RAC Meeting.
- Requested fence paint color samples from Contractor.

First/Lorena Construction fence mural

- Design presented at RAC Meeting.
- Requested fence color paint samples from Contractor.

Soto Station Public Art Project

- Artist presented concept design proposal to Contractor.
- Conducted tour of site with artist.

Pico/Aliso Station Public Art Project

- Artist presented art concept to Metro Art staff.

Atlantic Station

- Reviewed drawings and station model with artist team.
- Held preliminary art concept review with Metro Art staff and artist.

THIRD PARTY AGREEMENT STATUS

Third Party	Type of Agreement	Forecast Execution Date	Required Need Date	Status/ Comments
City of Los Angeles	Amendment	Completed	N/A	Executed December 2002.
Los Angeles County	Master	Completed	N/A	Executed April 2003.
Caltrans (All Projects)	Master	Completed	N/A	Executed July 2003.
Caltrans (101)	Design	Completed	N/A	Executed July 2003.
Caltrans (101)	Construction	Completed	N/A	Executed September 2003.
Caltrans (101)	Maintenance	12/08	Project Completion	The initial negotiation meeting was held on 1/9/03. LACMTA received a draft from Caltrans on 1/22/04. LACMTA reviewed and submitted the agreement to Caltrans on 2/10/04. A follow up call was made on 7/21/05.
LADWP (Water/Power)	Amendment	8/05	*6/04	LACMTA Management, County Counsel, and LACMTA Board staff have participated in meetings with DWP to complete negotiations, since the "Deadline and Delay" clause is not acceptable to LADWP. Meeting with City Attorney's Office and County Supervisor's Office failed to reach an agreement. LACMTA Management to meet with LADWP Management.
So. Cal. Edison Co.	Amendment	8/05	*6/04	LACMTA is waiting for SCE to submit a re-draft of the proposed amendment. The last call placed with SCE Executive Legal Branch stated on 2/25/05 they have no intention of signing agreement.
The Gas Company	Amendment	Completed	N/A	Executed May 2005.
SBC	Amendment	Completed	N/A	Executed May 2005.
Adelphia Cable Company	Amendment	8/05	*6/04	LACMTA received a draft from Adelphia for review. LACMTA Management and County Counsel reviewed the amendment and returned the document to Adelphia with comments. Adelphia's Legal Department is reviewing the document. A follow up call was made on 7/21/05.
California Water Service Company	Master	Completed	N/A	Executed May 2005.
L.A. County Sanitation Districts	N/A	N/A	N/A	In a letter dated 3/26/03, the Sanitation District stated that there is not a need for an agreement since there are no relocations related to their facilities. The Sanitation District will review submittals related to encasements of their facilities on Indiana Street.
MCI Worldcom	Amendment	Completed	N/A	Executed May 2005.
Metropolitan Water District	Amendment	Completed	N/A	Executed May 2003.

THIRD PARTY AGREEMENT STATUS (Continued)

Third Party	Type of Agreement	Forecast Execution Date	Required Need Date	Status/ Comments
Verizon Wireless	Amendment	10/05	*6/04	The revised draft amendment was hand delivered to Verizon on 11/19/03 and an electronic copy was sent to them 2/19/04. Verizon did respond with comments, which were reflected in a revised agreement sent 4/05. Verizon legal is completing final review. A follow up call was made on 7/21/05.
AT&T Local Services	Amendment	10/05	*6/04	LACMTA County Counsel reviewed the existing agreement and recommended revisions. A revised amendment was sent to AT&T. AT&T Legal is completing final review for execution. A follow up call was made on 7/21/05.
GST	N/A			Facilities are not impacted by Eastside Construction
Exxon Mobil Oil Company	N/A			Facilities are not impacted by Eastside Construction
Pacific Pipeline Company	N/A			Facilities are not impacted by Eastside Construction
Kinder Morgan Pipeline Company	N/A			Facilities are not impacted by Eastside Construction
Tosco Refining Company	N/A			Facilities are not impacted by Eastside Construction
Equilon Pipeline Company	N/A			Facilities are not impacted by Eastside Construction
Level 3 Communications	N/A			Facilities are not impacted by Eastside Construction
Broadwing Communications	N/A			Facilities are not impacted by Eastside Construction
Eller Media	N/A			Facilities are not impacted by Eastside Construction

* Work will be performed under the current MCA and will not delay ongoing work.

CPUC CROSSING SUMMARY

Batch	Application Status	Initial Package Submittal to MTA	Field Diagnostic Meeting	Revised Drawings Due to MTA	Draft Write-up to MTA	Draft Package Sumbittal to PUC Local office and Agencies	Final Package Submittal to PUC	CPUC Final Approval
1	Complete	8/5/02	8/12/02	8/26/02	9/6/02	9/6/02	9/6/2002	Approved
2	Complete	10/4/02	10/11/02	10/25/02	11/6/02	11/22/02	11/22/2002	Approved
3	Complete	2/6/03	2/27/03	3/10/03	1/27/03	4/11/02	4/18/2003	Approved
4	Complete	12/14/02	1/15/03	1/29/03	11/13/02	5/5/03	6/18/2003	Approved
4A	Complete	1/24/03	1/29/03	3/14/03	2/7/03	9/5/03	1/23/2004	Approved
6	Complete	3/19/03	3/26/03	6/20/03	2/7/03	9/5/03	9/12/2003	Approved
7	Complete	12/11/02	12/18/02	3/31/03	2/7/03	5/5/03	7/25/2003	Additional application (3rd/Ditman) to be submitted.
8	Complete	11/26/02	12/18/02	3/31/03	11/15/02	6/6/03	5/21/2004	Approved
9	Complete	1/20/03	1/29/03	3/31/03	11/22/02	8/29/03	9/12/2003	Approved
10	Complete	12/11/03	12/18/02	3/10/03	11/22/02	5/5/03	8/29/2003	Approved
11	Complete	2/13/03	2/27/03	4/18/03	12/6/02	6/6/03	8/29/2003	Approved
12	Complete	2/13/03	2/27/03	4/18/03	12/13/02	6/6/03	9/5/2003	Approved
13	Complete	2/6/03	2/20/03	4/18/03	2/21/03	6/6/03	9/1/2004	
14	Complete	1/8/03	1/15/03	3/14/03	11/12/02	8/29/03	10/30/2003	Approved
15	Complete	2/26/03	N/A	N/A	2/21/03	6/6/03	8/29/2003	Approved
16	Complete	2/26/03	N/A	N/A	2/28/03	6/6/03	8/29/2003	Approved
17	Complete	1/8/03	1/15/03	N/A	2/14/03	5/5/03	6/13/2003	Approved
18	Complete	1/8/03	1/15/03	3/20/03	2/14/03	5/5/03	6/13/2003	Approved
Agency Responsible		ELRTP	MTA	ELRP	ELRTP	MTA	MTA	

Batch No. 5 has been removed, as the Midway Yard will be utilized.

SHADED AREAS REPRESENTS COMPLETION

36 applications approved. Final applications are expected to be on the next agenda meeting on August 18, 2005 for approval.

An additional application is planned to be submitted after further analysis. The location is 3rd and Ditman.

Extensions are being submitted as approvals surpass their 3 year life span.

Batch		Batch Descriptions	
1	1st / Alameda	10	3rd / Ford
2	Alameda / Temple		3rd / McDonnell
	1st / Hewitt		3rd / Arizona
	Ped Crossings @ 1st / Alameda Station	11	3rd / Mednik
3	1st / Vignes		3rd / Civic Center Drive
4	1st / Lorena		3rd / La Verne
4A	Indiana/1st	12	3rd / Drveways to Sherriff's Station
	Indiana/3rd		3rd / Wood / Via Corona / Pomona / Beverly
	Indiana Pedestrian Crossing	13	3rd / 60 Fwy WB Connector
6	1st / Mission		3rd / 60 Fwy over ELRT
	1st / Anderson		3rd / 710 Fwy SW Connector
	1st / Clarence		3rd / Bridge over 710 Fwy
	1st / Utah		3rd / 710 Fwy SE Connector
	1st/Gless Pedestrian Crossing	14	Union Station Service Road
7	3rd / Ditman	15	1st / Santa Fe
	3rd / Rowan		1st / Myers
8	3rd / Gage	16	1st / MTA
	3rd / 60 Fwy WB Ramps		1st / BNSF
	3rd /Downey		1st / Union Pacific
9	3rd / Marianna	17	US 101 Fwy Overcrossing
	3rd / Eastern	18	Commercial Street Overcrossing

CONTRACT C0802 STATUS

Description: 101 Freeway Bridge Overcrossing Contractor: Brutoco Engineering & Construction		Contract No. C0802 Status as of: July 29, 2005					
Progress/Work Completed: * Commenced Drainage Systems 5 and 15. * Began grout repairs for CIDH piles at Bent 6 and Abutment 10. Areas of Concern: None		Major Activities (In Progress): * CIDH piles repair. * Roadway construction. * Drainage systems construction. Major Activities Next Period: * Roadway construction. * CIDH pile repair. * Construction of new freeway on and off ramps.					
Schedule Summary: Date of Award: 09/07/04 Notice to Proceed: 09/22/04 Original Contract Duration: 700 CD Current Contract Duration: 729 CD Elapsed Time from NTP: 310 CD			Original Contract Dates	Time Extension	Current Contract	Forecast	Variance CDs
		Notice to Proceed	09/22/04	0	09/22/04	09/22/04	0
		Milestone 1 - Complete Abutment No. 10	06/26/06	31	07/27/06	07/27/06	0
		Milestone 2- Complete All Work	08/23/06	33	09/25/06	09/25/06	0
Physical Percent Complete: Physical completion * as of this reporting period is: 32.92% * Note: Physical completion assessment reflects work completed and invoice amount shown in Caltrans Monthly Progress/Expense Report		Cost Summary: \$ In millions 1. Award Value: 6.42 2. Executed Modifications: 0.00 3. Approved Change Orders: 0.00 4. Current Contract Value (1+2+3): 6.42 5. Incurred Cost: 2.36					

CONTRACT C0803 STATUS

Description: Tunnel, Stations, Trackwork & Systems Contractor: Eastside LRT Constructors		Contract No. C0803 Status as of: July 29, 2005					
Progress/Work Completed: * Completed East Portal Phase-II soldier pile installation. * Completed Soto Station permeation grouting. * Commenced Soto Station pile cap installation. * Commenced West Portal soldier pile installation. * Commenced tunnel boring machines disassembly & packing. * Submitted Segments 2B & 4 initial civil design. * Submitted 85% designs for Little Tokyo/Arts District Station and Pico/Aliso Station. * Submitted guideway and trackwork 85% design package. * Submitted schematic designs for Maravilla Station and East LA Civic Center Station. * Submitted 60% systems design package (traction power, OCS, train control, and communication). Areas of Concern: None		Major Activities (In Progress): * Boyle Station level-4 structure excavation * Soto Station deck beam fabrication * Soto Station, East Portal, and 3rd Street utility relocations * West Portal soldier pile installation * East Portal permeation grouting * Precast tunnel liner segments manufacturing * Tunnel boring machines disassembly & packing * Boyle Station 100% design * 85% designs for Soto Station and Atlantic Station * Initial civil design for Segment 3B * 85% civil designs for Segments 1, 2A, 3A, 5, 6, and 7. Major Activities Next Period: * Disassembly and packing of tunnel boring machines * Tunnel liner segments manufacturing * West Portal soldier pile installation * Soto Station deck beam installation * Boyle Station 5th level excavation and grounding mat * 85% design for Soto Station					
Schedule Summary: Date of Award: 06/01/04 Notice to Proceed: 07/01/04 Original Contract Duration: 1795 CD Current Contract Duration: 1795 CD Elapsed Time from NTP: 394 CD Option D Contract duration 90 CD Complete			Original Contract Dates	Time Extension	Current Contract	Forecast	Variance CDs
		Notice to Proceed	07/01/04	0	07/01/04	07/01/04	0
		Milestone 1 - Contract Completion. Complete all systems integration testing and ready for MTA's pre-revenue operation testing.	12/31/08	5	01/05/09	01/05/09	0
		Milestone 3 - Complete Universal Fare System Equipment area.	04/30/08	5	05/05/08	05/05/08	0
		Milestone 5 - Vacate all staging areas and turn over to MTA.	05/30/09	0	05/30/09	05/30/09	0
		Milestone 6 - Complete design and construction of Option D work.	09/28/04	0	09/28/04	09/28/04	0
Physical Percent Complete: Physical completion * as of this reporting period is: 12.44% * Note: Physical completion assessment reflects work completed and invoice amount.		Cost Summary: 1. Award Value: 600.45 2. Executed Modifications: 0.41 3. Approved Change Orders: 0.00 4. Current Contract Value (1+2+3): 600.86 5. Incurred Cost: 164.59					

CONTRACT P2550 STATUS

Description: 2550 Rail Vehicle Program Contractor: AnsaldoBreda, Italy	Contract No. P2550 Status as of: July 29, 2005					
Progress/Work Completed: 1.The second vehicle (702A & B) arrived at the Gold Line Yard on July 22, 2005 2. The IPT conducts on-going weekly conference calls with project staff in Los Angeles, New York, Pistoia, and Naples Italy. 3. AnsaldoBreda engineers traveled to Los Angeles in July 2005 to support the Press unveiling of the P2550 LRV on July 28, 2005. Areas of Concern: 1. Documentation submittals are close to complete. AnsaldoBreda has contracted with a consultant to "catch-up" on the submittals. 2. Milestone 5A - Approval of all design dwgs, Milestone 6A - Approval of Cab Mock-up, Milestone 7A and Milestone 8A - Appr.of Traction Motors Perf. Tests, are not yet considered as complete nor officially approved. Invoices for these milestones were received and are scheduled for at least partial payment in August 2005.	Major Activities (In Progress): 1. Contractor is in process of completing Milestone Nos. 5A, 6A, 7A, & 8A work. Invoices for these milestones were received and are scheduled for at least partial payment in August 2005. 2. The contractor continues to work on Milestone Nos. 9A, 10A and 11A. 3. AnsaldoBreda Testing Engineers are in los Angeles and are preparing LRV 701 for Acceptance Testing in late August 2005. Major Activities Next Period: 1. LRV 702 will begin Acceptance Testing. 2. LRV 701 will be prepared for Acceptance Testing. 3. The Contractor to provide Mobilization Schedule for the Pittsburg, CA plant. MTA IPT is traveling to Pittsburg to inspect the plant. 4. During this period the IPT will continue closely monitoring and expediting where necessary for all scheduled activities involved in constructing and supporting the 2550 rail vehicle production. 5. Weekly teleconference meetings have reconvened to monitor technical design completion for the P2550 rail vehicles.					
Schedule Summary: Date of Award: 04/24/03 Notice to Proceed: 06/06/03 Original Contract Duration: 1460 CD Current Contract Duration: 1460 CD Elapsed Time from NTP: 784 CD Option 1 & 2 Contract duration 1460 CD** ** after starting options 1 & 2 Note: MTA issued Modification No. 1 to AnsaldoBreda. Modification No. 1 is a zero-cost, miscellaneous administrative and technical clarification modification. MTA completed Modification No. 2 that reflects the recently granted California Board Of Equalization exemption for State Sales Tax on the Light Rail Vehicles.		Original Contract Dates	Time Extension	Current Contract	Forecast	Variance CDs
	Notice to Proceed	06/06/03	0	6/06/03A	6/06/03A	0
	Milestone 1A -	08/08/03	0	12/08/03	10/15/03A	0
	Milestone 2A -	09/05/03	0	11/20/03	12/30/03A	0
	Milestone 3A -	11/07/03	0	01/20/04	12/30/03A	0
	Milestone 4A -	01/02/04	0	01/31/04	3/31/04A	0
	Milestone 5A - Appr.dwgs, per Sect.1.13.1Tech Specs	05/07/04	0	05/07/04	08/31/05	481
	Milestone 6A - Appr.of Operator Cab Mockup	06/04/04	0	06/04/04	08/31/05	453
	Milestone 7A - Appr.Carbody Stress Analysis & C.T. Report	11/05/04	0	11/05/04	08/31/05	299
	Milestone 8A - Appr.of Traction Motors Perf. Tests	11/05/04	0	11/05/04	08/31/05	299
	Milestone 9A - Appr.of Final Op. Hazard Analysis	02/04/05	0	02/04/05	08/31/05	208
	Milestone 10A - Deliver Draft Op.Maint.H. Repair Manuals	02/11/05	0	02/11/05	08/31/05	201
	Milestone 11A - Appr.of Op. Training Program	04/08/05	0	04/08/05	08/31/05	145
	Milestone 12A-Appr.of Oper., Maint. & Heavy Repair	09/23/05	0	09/23/05	09/23/05	0
	Milestone 13A-Compl.&Apprv. all Car-level Design Qualif. Tests	11/18/05	0	11/18/05	11/18/05	0
	Milestone 14A-Compl.&Apprv. Weight Control Program Plan	11/18/05	0	11/18/05	11/18/05	0
	Milestone 15A - Acceptance of Two First Article Vehicles	11/18/05	0	11/18/05	11/18/05	0
	Milestone 16A - Completion of Operating & Maintenance Training Programs	12/30/05	0	12/30/05	12/30/05	0
Physical Percent Complete: Physical completion * as of July 2005 is 52% * Note: Physical completion assessment reflects work completed and invoiced plus current work in progress.	Cost Summary: \$ In millions 1. Award Value: Pasadena (Proj. No.: 800151) 126.99 Eastside Ext. (Proj. No.: 800088) 31.75 Total Award Value 158.74 2 Executed Modifications 0.00 3 Approved Change Orders: (None) 0.00 4 Current Contract Value (1 + 2 + 3): 158.74 5 Pending Changes: (None) 0.00 6 Incurred Cost: 36.64					

CONSTRUCTION PHOTOGRAPHS



Boyle Heights/Mariachi Plaza Station structural excavation.



East Portal Phase II soldier pile installation.

CONSTRUCTION PHOTOGRAPHS



Roadway construction continued with realigning freeway ramps.

APPENDIX

COST AND BUDGET TERMINOLOGY

ESTIMATED PROJECT COSTS: Estimated project costs are based upon the current project cost estimates that are produced during the engineering design phase.

COMMITMENTS: The total of actual contract awards, executed change orders or amendments, approved work orders of Master Cooperative Agreements, offers accepted for purchase of real estate, and other LACMTA actions that will result in specific expenditures at a future time.

INCURRED COST: The total value of work performed to date of services received, and acquired materials or properties.

EXPENDITURES: The total dollar amount of checks written by the LACMTA's Accounting department for contractor or consultant invoices, third party invoices, staff salaries, and closing payments for escrow accounts that is reported in the LACMTA's Financial Information System (FIS).

CONSTRUCTION: Includes guideways, yards and shops, systems equipment, stations, and vehicles.

PROFESSIONAL SERVICES: Includes general engineering, construction management services, consultant design support services during construction, legal counsel, and agency (LACMTA staff) costs.

RIGHT-OF-WAY: Includes real estate appraisals, purchase cost of parcels, easements, right-of-entry permits, escrow fees, and tenant relocation.

UTILITY/AGENCY FORCE ACCOUNT: Includes work by outside agencies and utilities in design coordination and review.

CONTINGENCY: A fund established at the beginning of a project to provide for anticipated but unknown additional costs that may arise during the course of the project.

SPECIAL CONDITIONS: Includes utilities relocation, environmental compliance and mitigation, master cooperative agreements, insurance program, artwork, systems integration testing and pre-revenue operations.

APPENDIX

LIST OF ACRONYMS

AFE	Authorization For Expenditure
ATC	Automatic Train Control
CADD	Computer Aided Drafting and Design
CALTRANS	California Department of Transportation
CD	Calendar Day
CM	Construction Manager
CMAC	Congestion Mitigation Air Quality
CN	Change Notice
CO	Change Order
CNFPFA	Concurrent Non-FFGA Project Activities
CPM	Critical Path Method
CPUC	California Public Utilities Commission
CR	Camera Ready
CTC	California Transportation Commission
CUD	Contract Unit Description
DB	Design/Build
DBB	Design/Bid/Build
DD	Design Development
DOT	Department of Transportation
DWP	Department of Water and Power
EIR	Environmental Impact Report
EIS	Environmental Impact Statement
EPBM	Earth Pressure Balance Machine
ESP	Eastside LRT Partners
FAR	Federal Acquisition Regulation
FD	Final Design
FEIS	Final Environmental Impact Statement
FEIR	Final Environmental Impact Report
FFGA	Full Funding Grant Agreement
FIS	Financial Information System
FSEIR	Final Supplemental Environmental Impact Report
FSEIS	Final Supplemental Environmental Impact Statement
FTA	Federal Transit Administration
FTE	Full Time Equivalent
GDSR	Geotechnical Design Summary Report
IFB	Invitation for Bid
IPO	Integrated Project Office
JV	Joint Venture
LA	Los Angeles
LABOE	Los Angeles Bureau of Engineering
LACFCD	Los Angeles County Flood Control District
LACMTA	Los Angeles County Metropolitan Transportation Authority
LADOT	Los Angeles Department of Transportation

APPENDIX
LIST OF ACRONYMS (Continued)

LADPW	Los Angeles Department of Public Works
LADWP	Los Angeles Department of Water and Power
LAUSD	Los Angeles Unified School District
LNTP	Limited Notice To Proceed
LONP	Letter Of No Prejudice
LRT	Light Rail Transit
L RTP	Long Range Transportation Plan
LRV	Light Rail Vehicle
MIS	Major Investment Study
MPSR	Monthly Project Status Report
N/A	Not Applicable
NEPA	National Environmental Protection Act
NPDES	National Pollution Discharge Elimination System
NTE	Not to Exceed
NTP	Notice To Proceed
OCIP	Owner-Controlled Insurance Program
P3	Primavera Project Planner® (scheduling software)
PC	Project Control
PE	Preliminary Engineering
PEER	Permit Engineering Evaluation Report
PGL	Pasadena Gold Line
PIP	Project Implementation Plan
PM	Project Manager
PMA	Project Management Assistance
PMIP	Project Management Implementation Plan
PMOC	Project Management Oversight Consultant
PMP	Project Management Plan (manual)
P&P	Policies & Procedures
PR	Project Report
PSR	Project Study Report
QA	Quality Assurance
QAR	Quality Assurance Report
QC	Quality Control
QPSR	Quarterly Project Status Report
RAC	Review Advisory Committee
RAG	Rail Activation Group
RFC	Request For Change
RFP	Request For Proposal
ROD	Record Of Decision
ROD	Revenue Operations Date
ROM	Rough Order of Magnitude

**APPENDIX
LIST OF ACRONYMS (Continued)**

ROW	Right-Of-Way
SCAQMD	Southern California Air Quality Management District
SCE	Southern California Edison
SCRRA	Southern California Regional Rail Authority
SHA	State Highway Account
SHPO	State Historic Preservation Office
SIT	System Integration Testing
SOV	Schedule Of Value
SOW	Statement Of Work
SP	Special Provision
STIP	State Transportation Improvement Program
STP	Surface Transportation Program
TBD	To Be Determined
TBM	Tunnel Boring Machine
TCRP	Traffic Congestion Relief Program
TPSS	Traction Power Substation
TRACS	Transit Automatic Control System
UFS	Universal Fare System
USDOT	U.S. Department Of Transportation
VE	Value Engineering
WBS	Work Breakdown Structure
WP	Work Package