

# Metro Gold Line Eastside Extension



# **METRO GOLD LINE EASTSIDE EXTENSION**

## **MONTHLY PROJECT STATUS REPORT**

THE PREPARATION OF THIS DOCUMENT HAS BEEN FINANCED IN PART THROUGH A GRANT FROM THE U. S. DEPARTMENT OF TRANSPORTATION, FEDERAL TRANSIT ADMINISTRATION (FTA), UNDER THE FEDERAL TRANSIT ACT OF 1964, AS AMENDED, AND FUNDS FROM THE STATE OF CALIFORNIA.

**APRIL 2008**

## **TABLE OF CONTENTS**

	Page No.
Project Overview & Status.....	1-3
Management Issues.....	4
Project Status	
• Project Scope.....	5
• Schedule	
○ Key Milestones Six-Month Lookahead .....	6
○ Project Master Schedule Critical Path.....	7-14
○ Critical Path Narrative.....	15
• Project Cost Status.....	16-17
• Financial/Grant Status.....	18-19
• Staffing.....	20-22
• Real Estate.....	23
• Environmental.....	24
• Community Relations.....	24
• Quality Assurance.....	25
• Safety.....	25
• Art Development.....	25
• Third Party.....	26-27
• CPUC Crossing.....	28
Contract C0802 Status .....	29
Contract C0803 Status .....	30
Contract E700051F Status.....	31
Contract P2550 Status .....	32
Construction Photographs .....	33-36
Appendices.....	37-40

## **PROJECT OVERVIEW & STATUS**

*The Metro Gold Line Eastside Extension Project is a six-mile, dual track light rail system with eight new stations and one station modification. The system originates at Union Station in downtown Los Angeles, where it connects with the Pasadena Gold Line, traveling generally east to Pomona and Atlantic Boulevards. The system will bridge State Route 101 Freeway and traverse the existing 1<sup>st</sup> Street Bridge over the Los Angeles River. The system will travel south on Alameda Street and then east on 1<sup>st</sup> Street with two stations at Alameda and Utah Streets. East of the Los Angeles River and 1<sup>st</sup> and Utah Streets, the alignment transitions to tunnel for approximately 1.7 miles, and continues beneath 1<sup>st</sup> Street to underground stations at 1<sup>st</sup> Street and Boyle Avenue and 1<sup>st</sup> Street and Soto Street. The alignment returns to the surface near the intersection of 1<sup>st</sup> Street and Lorena Streets, then jogs to the south, transitioning to follow 3<sup>rd</sup> Street with stations at Indiana Street, Ford Boulevard, Mednik Avenue and Pomona and Atlantic Boulevards.*

During this period, ELRTC worked with third parties agencies to resolve issues with street lighting and street improvement for the remaining civil design packages; Segments 3A, 3B and 4B. All Systems Design Packages have been completed.

The City of Los Angeles 1<sup>st</sup> Street Bridge Phase III Widening Project has progressed to the construction phase. The City has issued the Notice to Proceed (NTP) to the contractor, T. T. Polich & Associates, a Joint Venture, on April 2, 2008. The work is expected to complete in early 2010.

Metro staff is evaluating ARINC's proposal for the expansion of the existing SCADA system. The contract award is required by mid-summer 2008 in order to support Phase II of the Systems Integration Testing, which is Metro's responsibility.

Underground construction is proceeding per plan. The C0803 contractor continued track installation in both tunnels. Field crews completed placing clips on rail throughout the tunnels and poured the concrete plinth on both tunnels from East Portal to Soto Station. Also in this segment, work on closure pours began this period. West of Soto Station, construction crews began placing plinth rebar and installing forms and ties on the eastbound tunnel. Tunnel rail welding and cutting is pending OSHA's approval of the welding application that was submitted in February 2008. ELRTC is preparing for installation of the FRE conduit along the outer side of the track, which will follow once enough track plinth and closure pours are completed.

At the Boyle Heights/Mariachi Plaza Station, field crews poured the entrance mid-landing slab as well as the Emergency Exit # 2 roof slab. The installation of electrical raceway in the TC&C room was completed as well as placement of acoustical finish material at the mezzanine level. Installation of the station roof HDPE protective membrane was completed this period, which allowed construction crews to remove the temporary street decking panels and to provide earth backfill over the underground structures and to begin street restoration. This operation is being conducted with a full closure of 1<sup>st</sup> Street. Construction of upper walls at the station entrance continued per plan as well as installation of HVAC ducts, fire protection pipe, and electrical and mechanical equipment at the mezzanine level. Placement of the acoustical finish material at the track level continued.

At the Soto Station, construction crews poured the Emergency Exit No. 2 exterior walls and the entrance upper level exterior walls. Also, the station platform invert slab and walls were

## **PROJECT OVERVIEW & STATUS**

poured this period. Roof shoring for the entrance and Emergency Exit No. 2 slabs started as well as erection of CMU walls at the east end of the mezzanine level. Also, installation of the station roof HDPE protective membrane began.

At the West Portal, construction crews completed the temporary street deck removal, earth backfill over the structure and street restoration. This work occurred on schedule with a full street closure. ELRTC took delivery of the iron picket fence this period and began installation on top of the street barriers.

At the East Portal, construction of the last portal structural section continued per plan. Field crews poured the mezzanine level north and south exterior walls, and continued placing rebar, embeds and forms for the shaft structure exterior walls as well as stair # 1. The East Portal is being utilized as a staging and supply site for track installation in the tunnels.

At-grade construction is proceeding according to plan. At Union Station, construction of the temporary baggage-handling road is nearing completion and field crews completed installation of curb and gutter on the west ramp and began backfilling. Also, erection of OCS poles and brackets completed this period. At the US-101 Freeway LRT Bridge, construction of track plinth and installation of duct bank conduit continued. Along Alameda Street (Segment 1), field crews began concrete pours on the Mechanically Stabilized Earth (MSE) wall coping.

Along 1<sup>st</sup> Street between Alameda and Hewitt Streets (Segment 2A), field crews completed installation of the Buddhist Temple perimeter fence. Along 1<sup>st</sup> Street between Vignes Street and the West Portal (Segment 2B), construction of the guideway/track continued per schedule. The track protective slab at the Clarence Street crossover was poured as well as the west bound track invert slab west of the West Portal.

At the TPS-01 site, construction crews installed underground conduit, electrical vaults, the grounding grid and the control building foundation. Excavation was completed at the TPS-02 site. Also, installation of train control underground conduit and coupler case foundations began this period.

Construction along 1<sup>st</sup> Street between Lorena and Indiana Streets in Segment 4A is nearing completion. Construction crews continued installing track and plinth along the guideway as well as train control underground conduit and coupler case foundations. Street improvements at the south side of the 1<sup>st</sup> Street and Indiana Street intersection continued as well. At the TPS-03 site, installation of underground conduit and placement of electrical vaults completed this period. Construction of the guideway south of the Indiana Station (Segment 4B) continued per plan. The curved portion of track at 3rd Street and Indiana Street was completed. Also, at the Indiana Station Park & Ride, drainage work and paving were completed.

Construction along 3<sup>rd</sup> Street in Segment 5, between Ditman and Eastern Avenues, continued according to plan. Field crews began installation of the track crossover at Rowan

## **PROJECT OVERVIEW & STATUS**

Avenue. Also, installation of the OCS pole foundations and duct bank was completed, and the stringing of OCS wire west of Herbert Avenue began.

Between Mednik and Eastern Avenues (Segment 6), guideway construction also continued per plan. Construction crews began installation of OCS regulating cable and train control interlocking devices. The pulling and terminations of AC and DC cable at the TPS-05 site began this period.

At the east end of the alignment along 3<sup>rd</sup> Street between Atlantic Boulevard and Mednik Street (Segment 7), guideway construction is nearing completion. Field crews installed the specialized track sections at the Woods Avenue crossover. Also, installation of the OCS regulating cable, train control interlocking devices, and AC and DC wire pulling began this period. At the TPS-06 site, construction crews began pulling and terminations of AC and DC cable. Punch list work in this segment is underway.

In other areas of the alignment, at-grade station construction continues according to plan. Construction crews completed the installation of duct, conduit and cable tray inside the TC&C rooms at Atlantic and East Los Angeles Civic Center Stations. Also at these stations, junction boxes and cabinet installation began. At the Maravilla and Indiana Stations, erection of steel canopy frames continued, as well as TC&C room installation of grounding bus, cable tray, ducts and access doors. At the Pico/Aliso Station, field crews completed electrical grounding and began installation of cable tray supports and miscellaneous metals.

The fabrication and delivery of 50 light rail vehicles (LRV's), Contract No. P2550 continues per the revised plan. Ten vehicles are required for the Metro Gold Line Eastside Extension Project. Fabrication of car assemblies is done at the contractor's plant in Italy and final assembly and testing is done at the contractor's facility in California. To date, a total of thirty-one vehicles have been assembled and of those, nine vehicles are going through the pre-acceptance process before entering the final inspection and commissioning phase. There are some quality issues with the assembled vehicles that are preventing vehicle deliveries to the commissioning site. The contractor continued resolving these issues. Two more vehicles are scheduled for delivery to Metro next period to begin conditional acceptance testing. The contractor will provide a revised car delivery schedule that meets Metro's need.

The Universal Fare System (UFS) equipment acceptance test phase was completed this period. Metro staff has determined that in order to minimize the risk of equipment damage and vandalism, equipment installation will be deferred to the period of Pre-Revenue Operations. Therefore, it will be necessary for the vendor to store the completed equipment at the vendor's facility until the equipment is required for installation.

The Metro Art Department continued providing technical support and coordination between the C0803 contractor and the artists responsible to provide art pieces for the eight stations. The artists continue developing shop drawings with multiple fabricators and providing mounting details to the C0803 contractor. Metro and ELRTC are continuing with coordination meetings, where fabrication and installation issues are discussed.

**MANAGEMENT ISSUES**

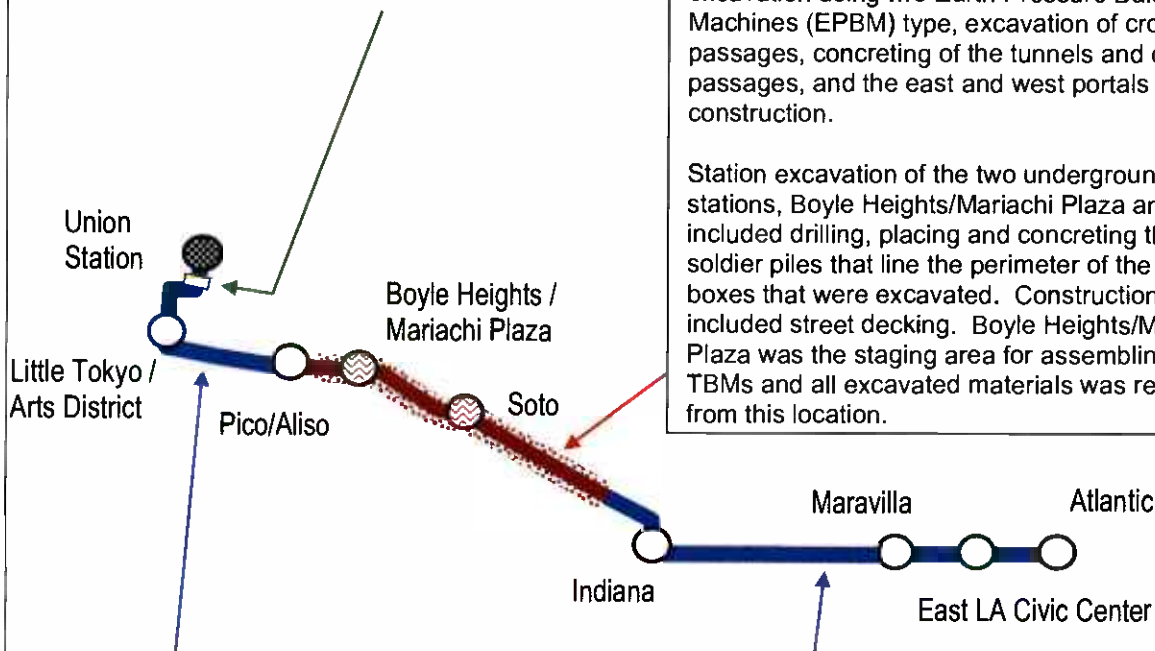
No Management Issues for the period ending April 2008.

## PROJECT SCOPE

**Contract C0802 – 101 Freeway Bridge Overcrossing:** The construction of the bridge was combined with Caltrans freeway improvements project. Caltrans administered the construction and the LACMTA provided oversight and was responsible for the construction costs of the bridge overcrossing.

**Contract C0803 - Tunnel and Station Excavation (Design/Bid/Build):** Construction of the 1.7 mile tunnel segment included tunnel excavation using two Earth Pressure Balance Machines (EPBM) type, excavation of cross passages, concreting of the tunnels and cross passages, and the east and west portals construction.

Station excavation of the two underground stations, Boyle Heights/Mariachi Plaza and Soto, included drilling, placing and concreting the soldier piles that line the perimeter of the station boxes that were excavated. Construction also included street decking. Boyle Heights/Mariachi Plaza was the staging area for assembling the TBMs and all excavated materials was removed from this location.



**Contract C0803 - Stations, Trackwork, and Systems (Design/Build):** Construction of the two underground stations includes structural walls, station platforms, mezzanines, station entrances, and plazas, architectural finishes and all related mechanical and electrical work.

Construction of the six-mile alignment includes six at-grade stations, trackwork installation and testing for the entire alignment.

Systems installation and testing is inclusive of power systems, automatic train control, fire and emergency management, TRACS and communications systems. The contractor will be responsible for systems integration testing for the entire line segment prior to pre-revenue operations.



**Metro Gold Line Eastside Extension**  
**Monthly Project Status Report**

**April 2008**

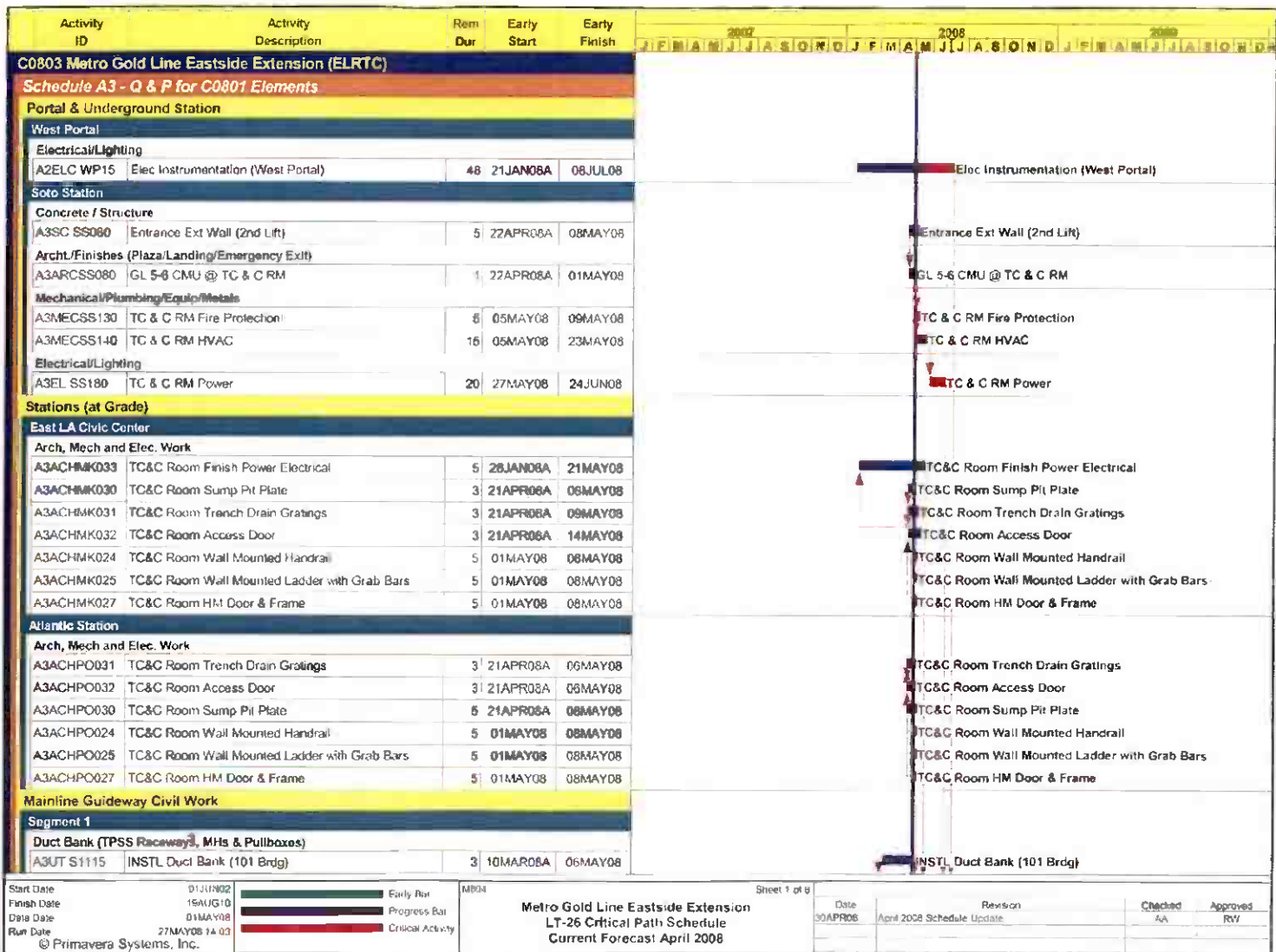
**KEY MILESTONE SCHEDULE SIX-MONTH LOOKAHEAD**

	Milestone Date	Apr-08	May-08	Jun-08	Jul-08	Aug-08	Sep-08
City of Los Angeles Awarded First Street Bridge Phase III Widening Contract NTP	04/02/08	△					
Energized the First Above Ground Station - Maravilla	04/11/08	○					
Started AC/DC Power Cable Pulling between Atlantic Station and the TPS-06 Substation	04/28/08	○					
Start Installation of Cable Transmission System - Segment 7 East End of the Alignment	05/07/08 *		○				
Complete Civil Guideway Construction - Segment 7 East End of the Alignment	05/08/08 *		○				
Complete MSE Wall From Commercial Street to Alameda Street - Segment 1	05/08/08 *		○				
Start Installation of the 34.5 KV Power Feeder	05/20/08 *		○				
Start Communications Installation - Atlantic Station	05/21/08 *		○				
Complete Civil Guideway Construction - Segments 2A and 2B	05/23/08 *		○				
Complete Construction of the East Portal Structure	06/05/08 *			○			
Complete Civil Guideway & Track Construction in the Tunnels - Segment 3	06/06/08			○			
Complete Temporary Baggage Handling Road at Union Station	06/09/08 *			○			
Complete Entrance Structure at Boyle Heights/Mariachi Plaza Station	06/18/08			○			
Start Installation of the Radio System in the Tunnels	06/24/08			○			
Start Installation of Elevators and Escalators at Underground Stations	07/02/08				○		
Remove Temporary Deck and Complete Street Restoration at Soto Station	07/03/08				○		
Complete Entrance Structure at Soto Station	07/08/08				○		
Complete Street Improvements Throughout the Alignment	08/05/08 *					○	
Deliver Fans and Dampers to Underground Stations	08/08/08					○	
Complete At-Grade Stations Canopy Installation	09/23/08 *						○
Complete Installation of Traction Power Substations	09/29/08 *						○

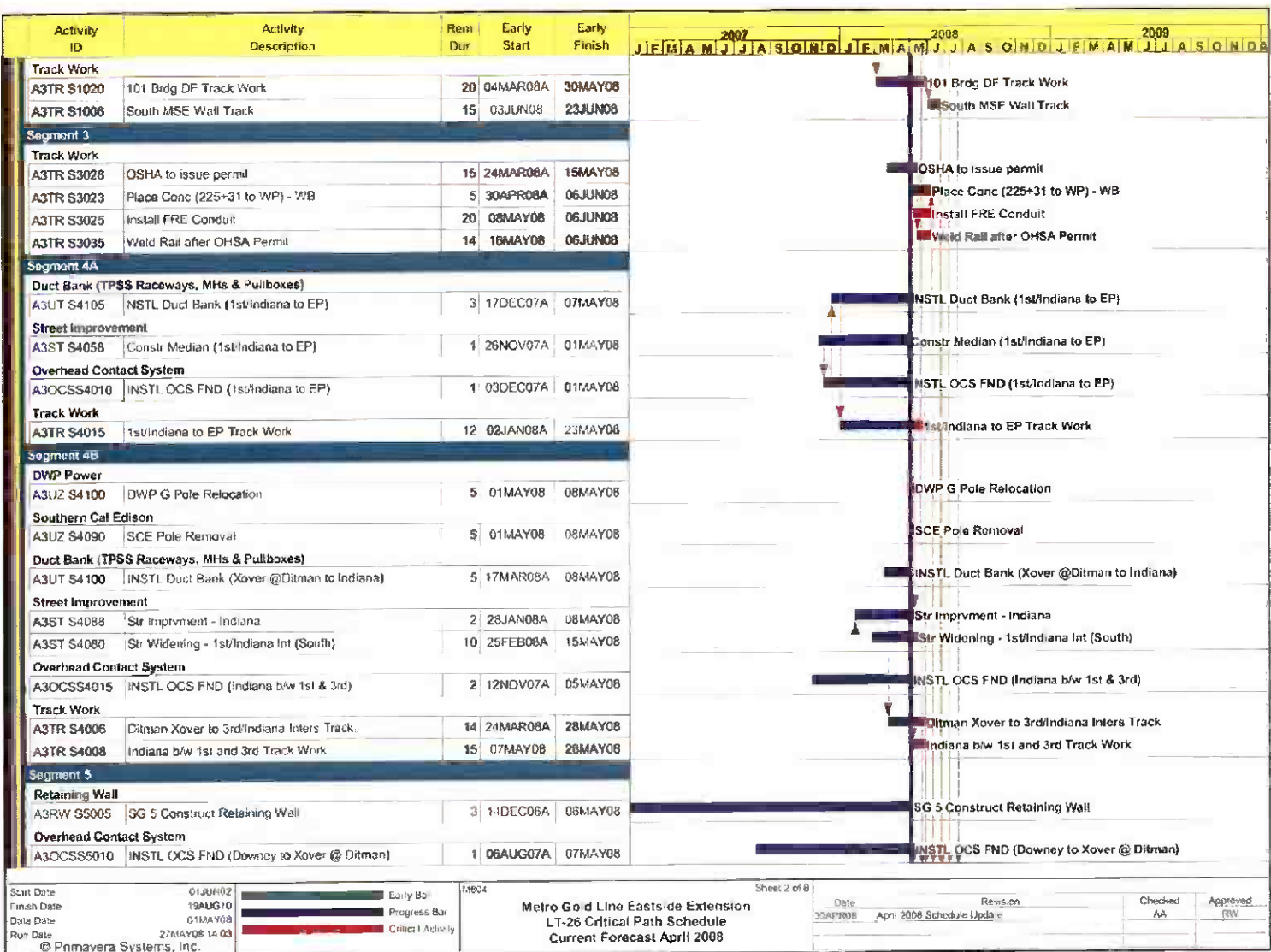
 LAC MTA Staff Milestone
  Eastside LRT Constructors
  FTA
 FTA Approval
  Other Agencies
 \* New Date
  Metro
 LAC MTA Board Approval

Six-month lookahead schedule for Contract C0803 reflects the contractor's current CPM schedule.

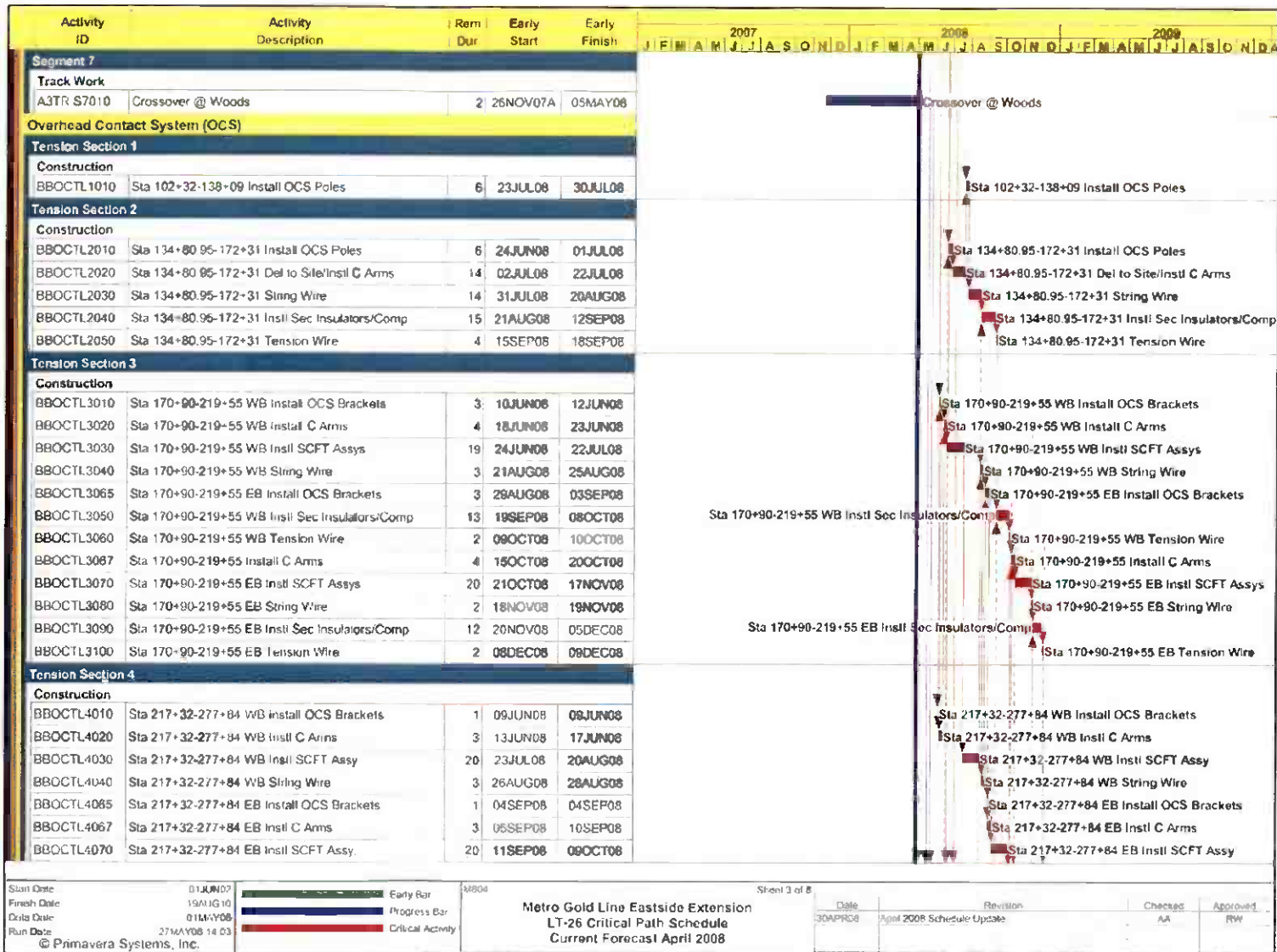
# PROJECT MASTER SCHEDULE CRITICAL PATH (1 of 8)



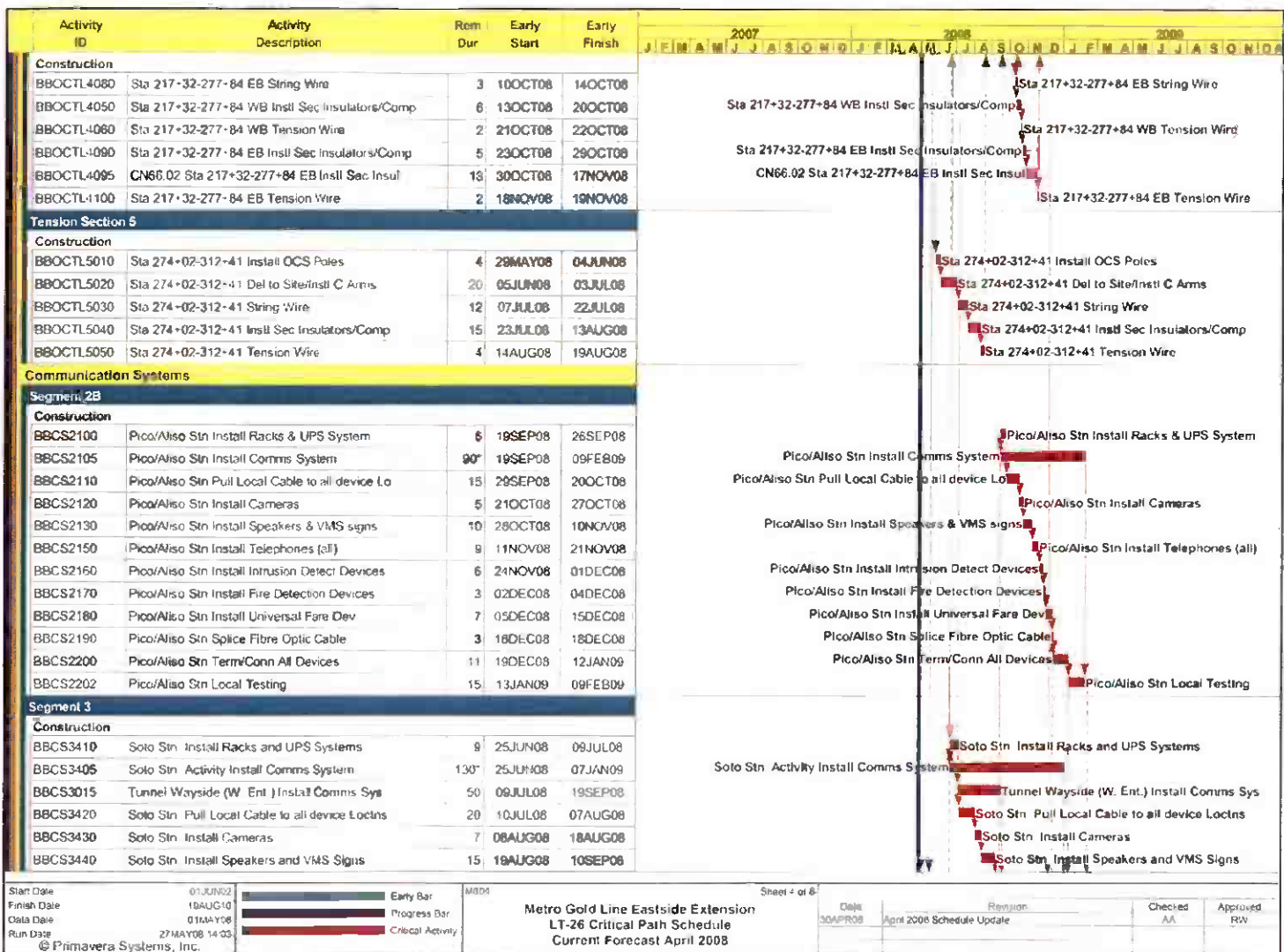
# PROJECT MASTER SCHEDULE CRITICAL PATH (2 of 8)



PROJECT MASTER SCHEDULE  
CRITICAL PATH (3 of 8)

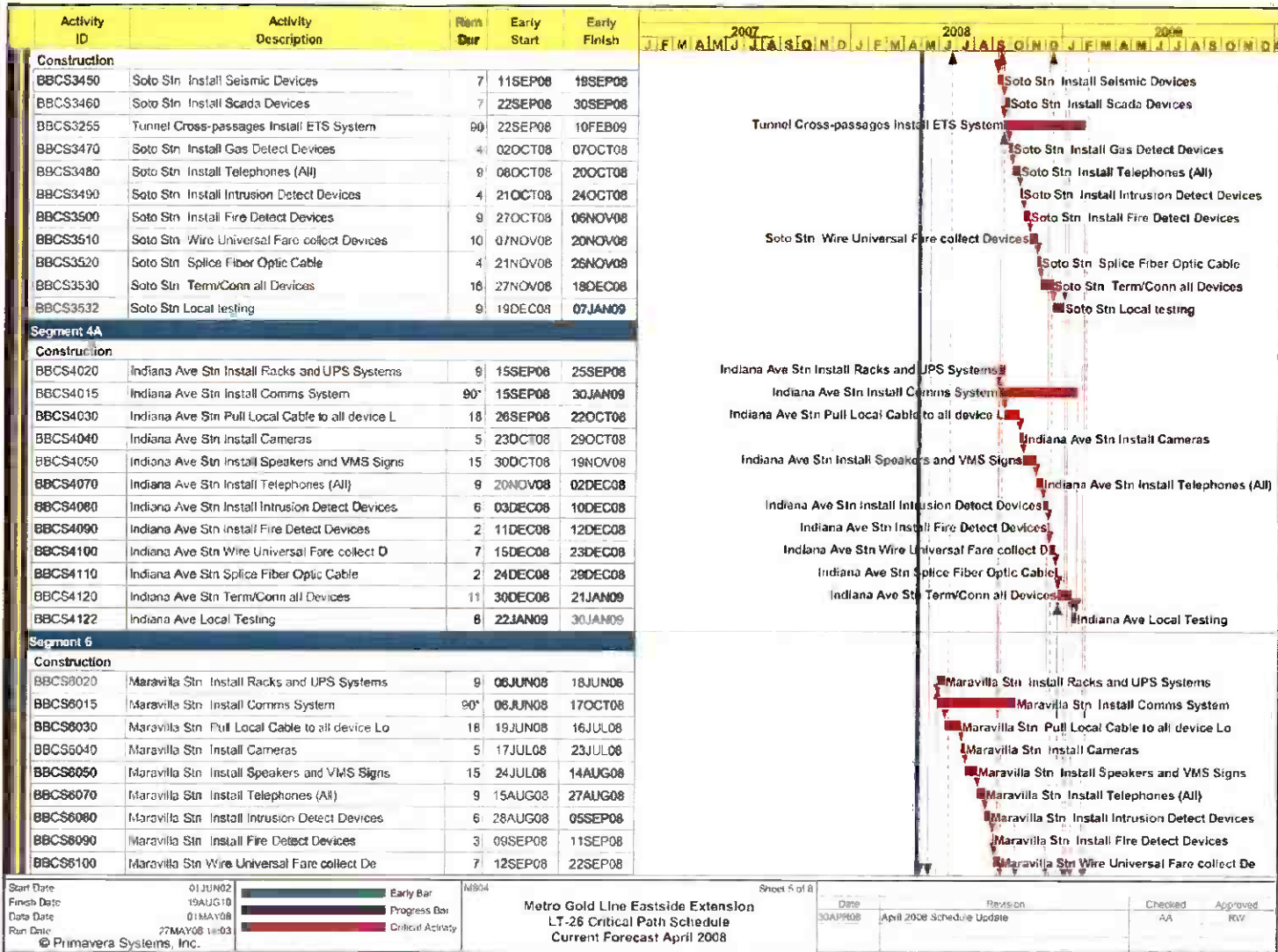


# PROJECT MASTER SCHEDULE CRITICAL PATH (4 of 8)

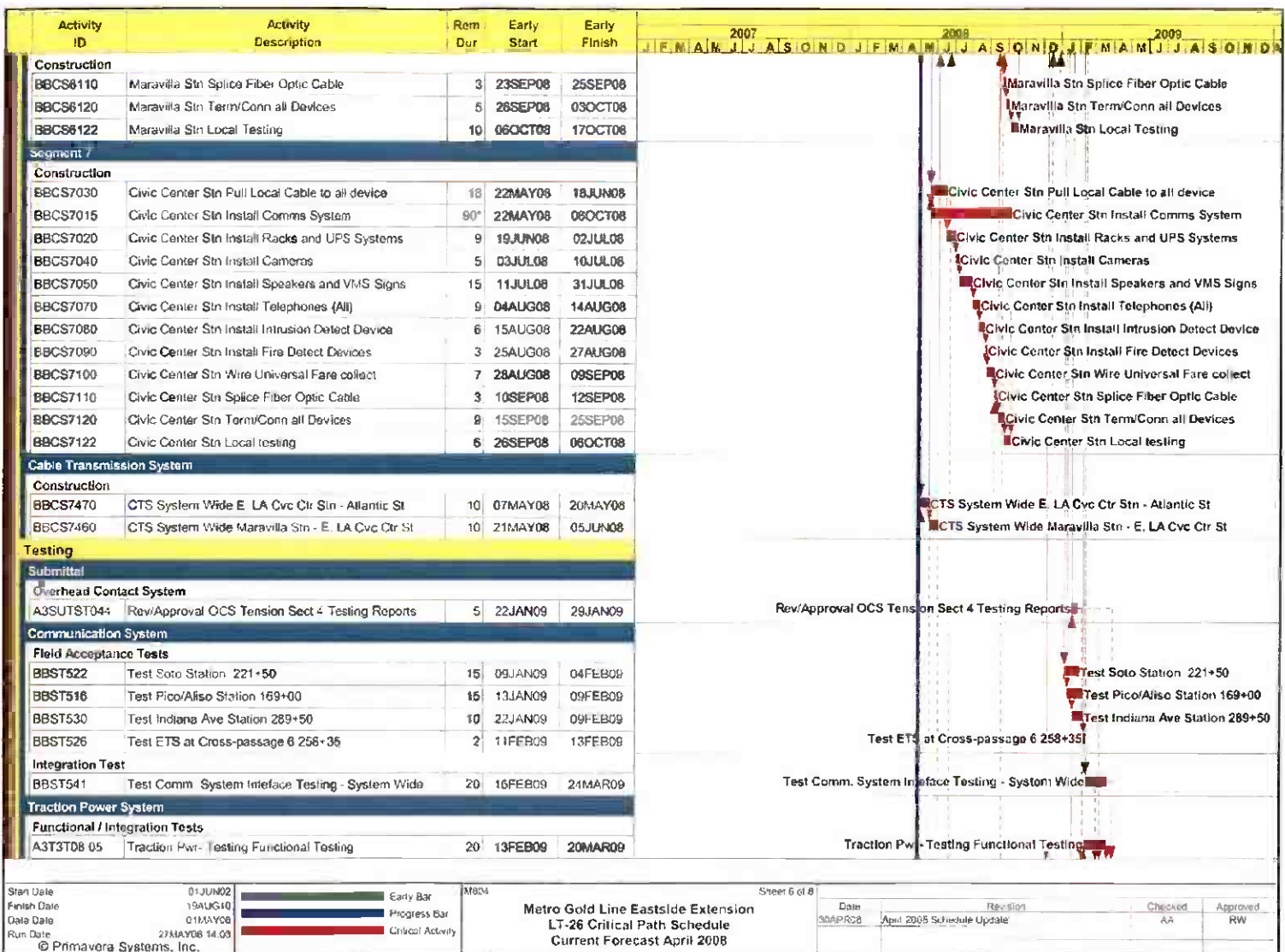




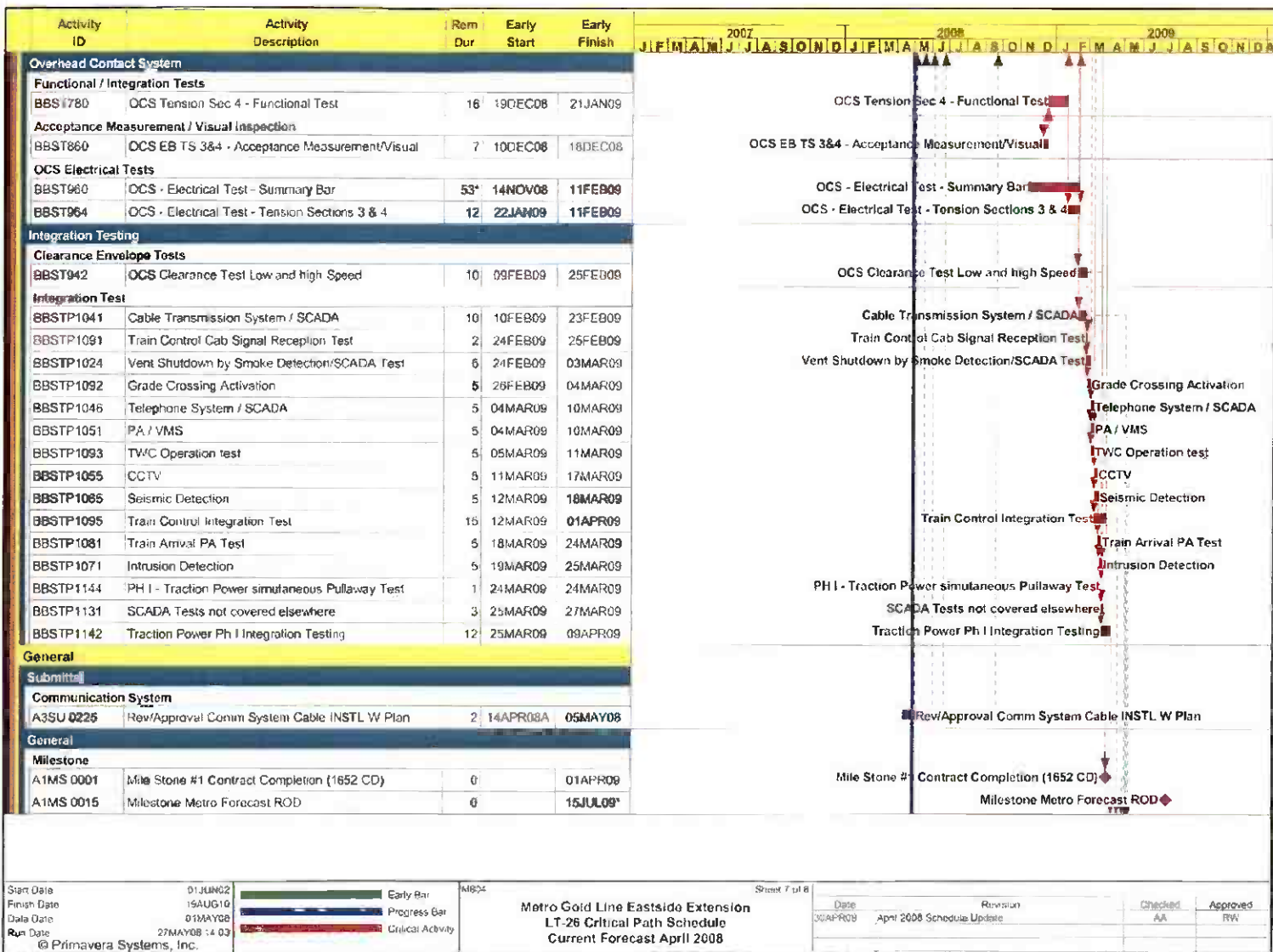
# PROJECT MASTER SCHEDULE CRITICAL PATH (5 of 8)



# PROJECT MASTER SCHEDULE CRITICAL PATH (6 of 8)

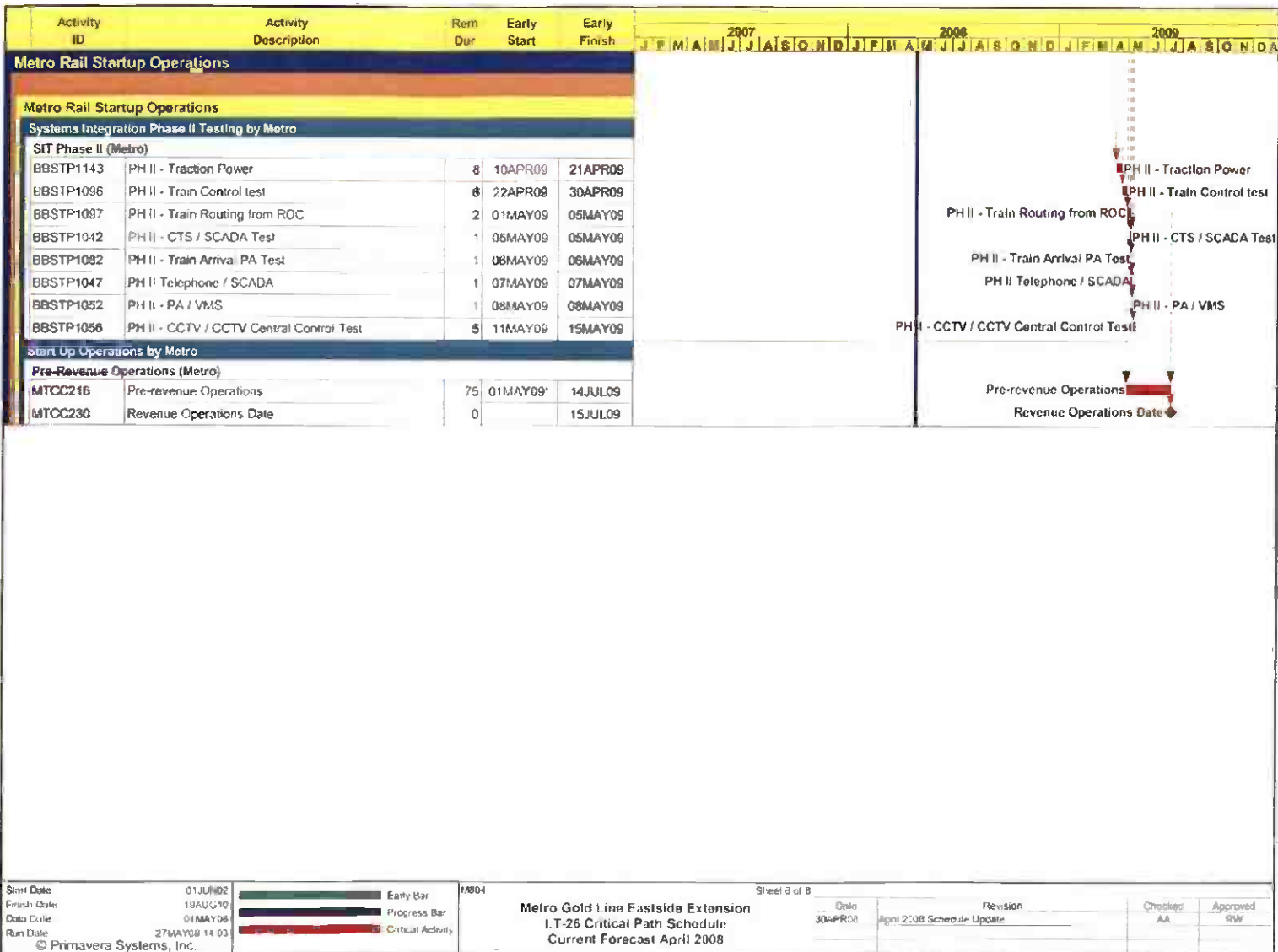


# PROJECT MASTER SCHEDULE CRITICAL PATH (7 of 8)





# PROJECT MASTER SCHEDULE CRITICAL PATH (8 of 8)



## **CRITICAL PATH NARRATIVE**

### **Current Critical Path Analysis**

The C0803 contractor (ELRTC) and Metro have completed the development of a re-baseline contract schedule, which incorporates significant subcontractor coordination for the remaining work while optimizing utilization of resources. ELRTC submitted a revised schedule with a substantial completion date of April 1, 2009, for which Metro approved this month as the re-baseline schedule. The contractor will complete a majority of the Systems Integration Phase I tests by March 1, 2009, to allow Metro to begin Phase II tests early enough to meet the beginning of Pre-Revenue Operations. Both the Forecast and FFGA Revenue Operations Dates were not impacted.

There are two parallel critical paths in the current schedule. One is through track and OCS installation from Union Station to Segment 4B; the other is communications and train control and communications room installation at the stations. Local facilities testing are the last stage of the critical path prior to entering the final test stage, where systems integration testing and Pre-Revenue Operations are conducted.

## PROJECT COST STATUS

### COST REPORT BY ELEMENT ORIGINAL SCOPE ACTIVITIES

DOLLARS IN THOUSANDS

ELEMENT	DESCRIPTION	ORIGINAL BUDGET	CURRENT BUDGET		COMMITMENTS		EXPENDITURES		CURRENT FORECAST		BUDGET / FORECAST VARIANCE
			PERIOD	TO DATE	PERIOD	TO DATE	PERIOD	TO DATE	PERIOD	TO DATE	
C	CONSTRUCTION	633,221	-	651,961	259	653,464	11,703	503,704	-	651,961	-
S	SPECIAL CONDITIONS	19,494	-	43,948	736	44,558	1,135	31,605	-	43,948	-
R	RIGHT-OF-WAY	40,358	-	42,299	-	43,004	-	42,288	-	42,299	-
P	PROFESSIONAL SERVICES	135,304	-	135,841	-	125,767	952	118,054	-	135,841	-
PC	PROJECT CONTINGENCY	60,254	-	14,599	-	-	-	-	-	14,599	-
PR	PROJECT REVENUE	(4,617)	-	(4,633)	-	-	-	(44)	-	(4,633)	-
SUBTOTAL		884,014	-	884,014	997	866,793	13,789	695,607	-	884,014	-
PF	PROJECT FINANCE COST	14,800	-	14,800	127	4,168	127	4,168	-	14,800	-
TOTAL		898,814	-	898,814	1,125	870,961	13,917	699,775	-	898,814	-

NOTE: EXPENDITURES ARE CUMULATIVE THROUGH MARCH 2008

## PROJECT COST ANALYSIS

### Original Budget

The Full Funding Grant Agreement (FFGA) was adopted June 1, 2004 in the amount of \$898.8 million. The Original Budget reflects the adopted FFGA.

### Current Budget and Current Forecast

The Current Budget and Forecast remains the same at \$898.8 million.

### Commitments

The Commitments increased by a total of \$1.1 million this period. In the Construction element there was an increase of \$0.3 million due to executed modifications associated with Contract C0803 – Tunnel, Stations, Trackwork and Systems. In the Special Conditions element there was an increase of \$0.7 million due to 3<sup>rd</sup> Party Master Cooperative Agreements with the City of Los Angeles and the Dry Utilities Shared incentive Program. And in the Project Finance Cost element there was an increase of \$0.1 million that reflects an interest payment. Interest earned is received monthly and interest payments are made semi-annually. Interest earnings are not projected to be more than the interest costs. The \$871.0 million in Commitments to date represents 96.9% of the Original Budget.

### Expenditures

Expenditures are cumulative through March 2008. The Expenditures increased by a total of \$13.9 million this period. In the Construction element there was an increase of \$11.7 million primarily due to costs associated with Contract C0803 – Tunnel, Stations, Trackwork and Systems. In the Special Conditions element there was an increase of \$1.1 million primarily for costs associated with the Dry Utilities Shared Incentive Program. In the Professional Services element there was an increase of \$1.0 million for costs associated with Metro Project Administration, Design Support During Construction and Construction Management services. And in the Project Finance Cost element there was an increase of \$0.1 million that reflects an interest payment. The March 2008 invoice for Contract C0803 in the amount of \$10.2 million was posted in the Metro's Financial Information System (FIS) on April 10, 2008 and will be reflected in the next reporting period. The \$699.8 million in Expenditures to date represents 77.9% of the Original Budget.

## PROJECT COST STATUS

### COST REPORT BY ELEMENT CONCURRENT NON-FFGA PROJECT ACTIVITIES DOLLARS IN THOUSANDS

ELEM- MENT	DESCRIPTION	ORIGINAL BUDGET	CURRENT BUDGET		COMMITMENTS		EXPENDITURES		CURRENT FORECAST		BUDGET / FORECAST VARIANCE
			PERIOD	TO DATE	PERIOD	TO DATE	PERIOD	TO DATE	PERIOD	TO DATE	
C	CONSTRUCTION	18,000	-	41,174	357	35,360	695	17,176	-	41,174	-
S	SPECIAL CONDITIONS	-	-	2,719	4	1,895	10	1,155	-	2,719	-
R	RIGHT-OF-WAY	-	-	-	-	-	-	-	-	-	-
P	PROFESSIONAL SERVICES	-	-	2,280	-	1,393	68	488	-	2,280	-
PC	PROJECT CONTINGENCY	-	-	-	-	-	-	-	-	-	-
PR	PROJECT REVENUE	-	-	(4,087)	(60)	(4,655)	-	(279)	-	(4,087)	-
SUBTOTAL		18,000	-	42,086	301	33,993	773	18,541	-	42,086	-
PF	PROJECT FINANCE COST	-	-	-	-	-	-	-	-	-	-
TOTAL		18,000	-	42,086	301	33,993	773	18,541	-	42,086	-

NOTE: EXPENDITURES ARE CUMULATIVE THROUGH MARCH 2008

## PROJECT COST ANALYSIS

### Original Budget

The Metro Board adopted the Original Budget of \$18.0 million on March 24, 2005.

### Current Budget and Current Forecast

The Current Budget and Forecast remain the same at \$42.1 million.

### Commitments

The Commitments increased by \$0.3 million this period primarily due to an executed modification for a traction power substation site plan revision. The \$34.0 million in Commitments to date represents 80.8% of the Current Budget.

### Expenditures

Expenditures are cumulative through March 2008. The Expenditures increased by \$0.8 million this period primarily for costs associated with the mitigation of the City of Los Angeles caused delays to the 1<sup>st</sup> Street Bridge, filler material at the 1<sup>st</sup> Street Bridge, traction power sectionalization, urban design elements, archeological support, Metro Project Administration costs, and Design Support During Construction. The March 2008 invoice for Contract C0803 in the amount of \$0.2 million was posted in the Metro's Financial Information System (FIS) on April 10, 2008 and will be reflected in the next reporting period. The \$18.5 million in Expenditures to date represents 44.1% of the Current Budget.

**Metro Gold Line Eastside Extension**  
**Monthly Project Status Report**

**April 2008**

**FINANCIAL/GRANT STATUS – ORIGINAL SCOPE ACTIVITIES**

APRIL 2008											
STATUS OF FUNDS BY SOURCE											
SOURCE	(A) ORIGINAL BUDGET	(B) TOTAL FUNDS ANTICIPATED	(C) TOTAL FUNDS AVAILABLE	(D) COMMITMENTS \$	(D/B) %	(E) EXPENDITURES \$	(E/B) %		(F) BILLED TO FUNDING SOURCE \$	(F/B) %	
FEDERAL - SECTION 5309 NEW START	\$490.700	\$490.700	\$255.193	\$473.503	96%	\$346.121	71%	(1)	\$337.179	69%	
FED - SECTION 5309 FIXED GUIDEWAY	\$23.100	\$12.000	\$12.000	\$12.000	100%	\$12.000	100%		\$12.000	100%	
FEDERAL - CMAQ	\$10.300	\$10.300	\$10.276	\$10.276	100%	\$10.276	100%		\$10.276	100%	
REGIONAL IMPROVEMENT PROG - FED	\$179.600	\$4.600	\$4.600	\$4.600	100%	\$4.600	100%		\$4.600	100%	
REGIONAL IMP PROG - STATE	\$0.600	\$175.600	\$131.796	\$175.600	100%	\$131.796	75%		\$131.796	75%	
STATE TCRP	\$45.000	\$45.000	\$45.000	\$45.000	100%	\$45.000	100%		\$45.000	100%	
PROP A 35% / PROP C 40%	\$124.614	\$135.714	\$135.714	\$135.714	100%	\$135.714	100%		\$119.372	88%	
LEASE REVENUES	\$10.100	\$10.100	\$10.100	\$10.100	100%	\$10.100	100%		\$10.100	100%	
ACCRUALS											
SUB-TOTAL	\$884.014	\$884.014	\$604.679	\$866.793	98%	\$695.607	79%		\$670.323	76%	
PROP A / PROP C (INTEREST COST)	\$14.800	\$14.800	\$1.980	\$4.168	28%	\$4.168	28%		\$1.540	10%	
TOTAL	\$898.814	\$898.814	\$606.659	\$870.961	97%	\$699.775	78%		\$671.863	75%	

NOTE: EXPENDITURES ARE CUMULATIVE THROUGH MARCH 2008.  
 (1) BILLED EXPENDITURES IN EXCESS OF FUNDS AVAILABILITY ARE TEMPORARILY FUNDED THROUGH BRIDGE FINANCING.

**STATUS OF FUNDS ANTICIPATED**

**FEDERAL SECTION 5309 NEW STARTS:** LACMTA has received an appropriation of \$100.0M through FY07. LACMTA submitted a grant application for \$78.4 M in March 2008. Approval is expected in June 2008.

**RIP-STATE:** LACMTA submitted an allocation request of \$43.8 to the CTC for consideration for their upcoming July 2008 meeting.

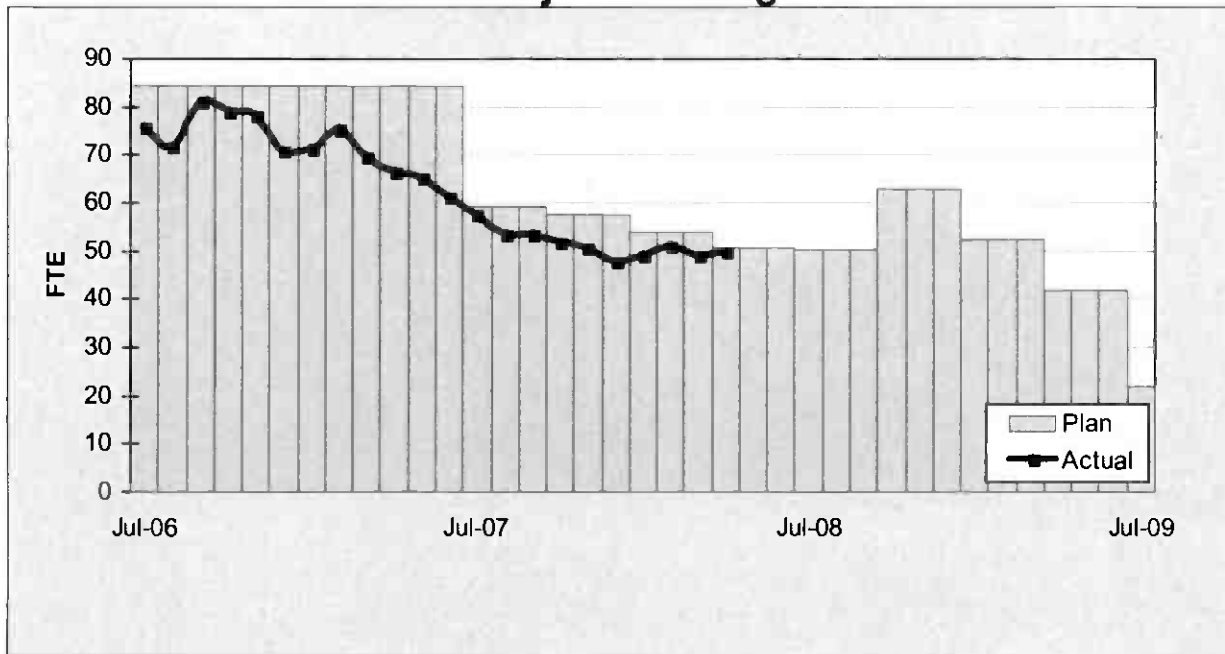
**FINANCIAL/GRANT STATUS**  
**CONCURRENT NON-FFGA PROJECT ACTIVITIES**

APRIL 2008		STATUS OF FUNDS BY SOURCE							
SOURCE	(A) APPROVED BUDGET	(B) TOTAL FUNDS ANTICIPATED (1)	(C) TOTAL FUNDS AVAILABLE	(D) COMMITMENTS \$	(D/B) %	(E) EXPENDITURES \$	(E/B) %	(F) BILLED TO FUNDING SOURCE \$	(F/B) %
PROP C 40%	\$14,000	\$14,000	\$14,000	\$14,000	100%	\$7,679	55%	\$4,969	35%
PROP C 10%	\$4,000	\$4,000	\$4,000						
STATE TCR	\$0.000	\$24,086	\$24,086	\$19,993	83%	\$10,862	45%	\$10,862	45%
<b>TOTAL</b>	<b>\$18,000</b>	<b>\$42,086</b>	<b>\$42,086</b>	<b>\$33,993</b>	<b>81%</b>	<b>\$18,541</b>	<b>44%</b>	<b>\$15,831</b>	<b>38%</b>

NOTE: EXPENDITURES ARE CUMULATIVE THROUGH MARCH 2008.

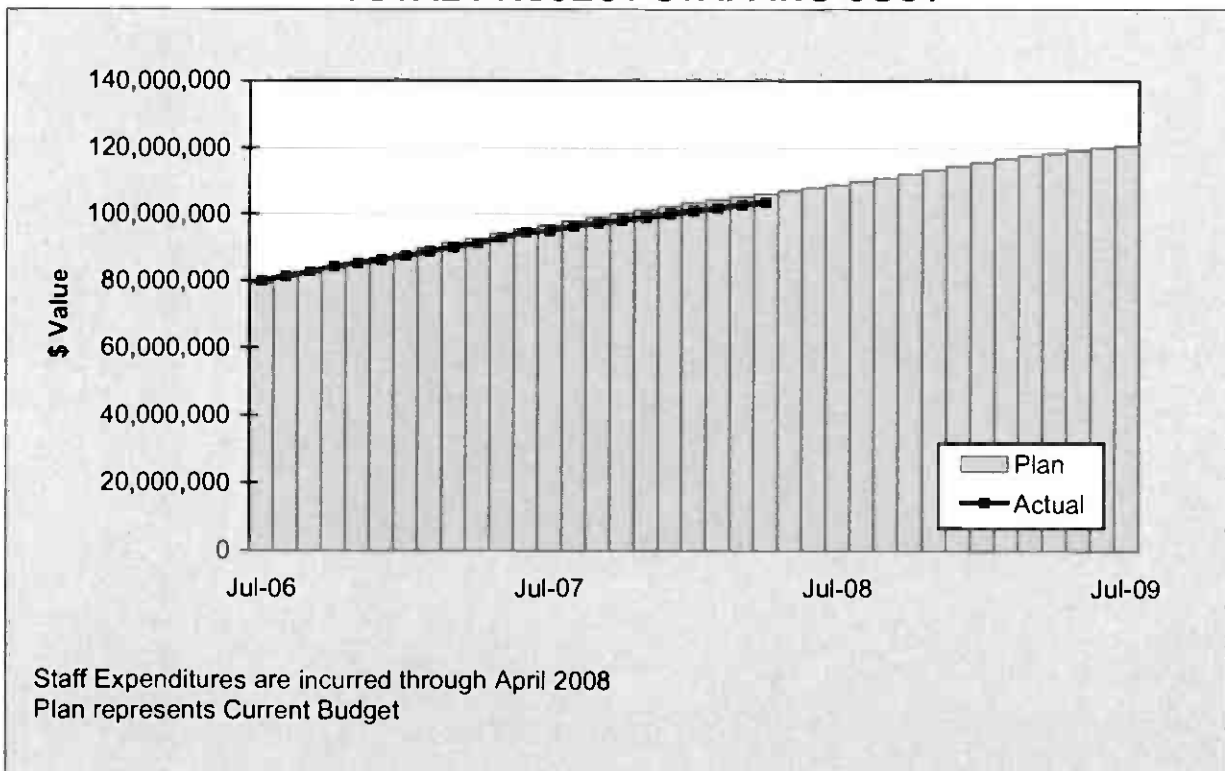
## STAFFING STATUS

### Total Project Staffing - FTES



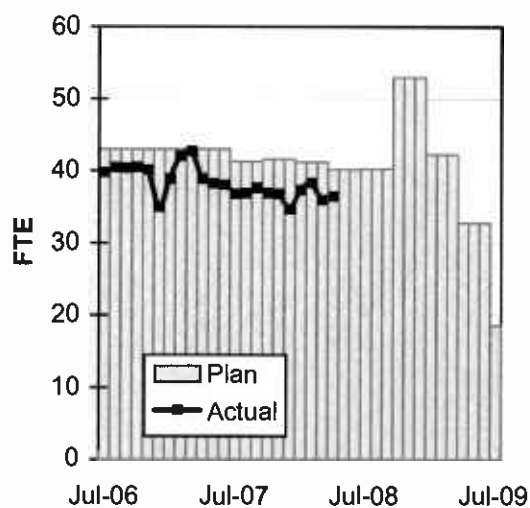
## STAFFING STATUS

### TOTAL PROJECT STAFFING COST

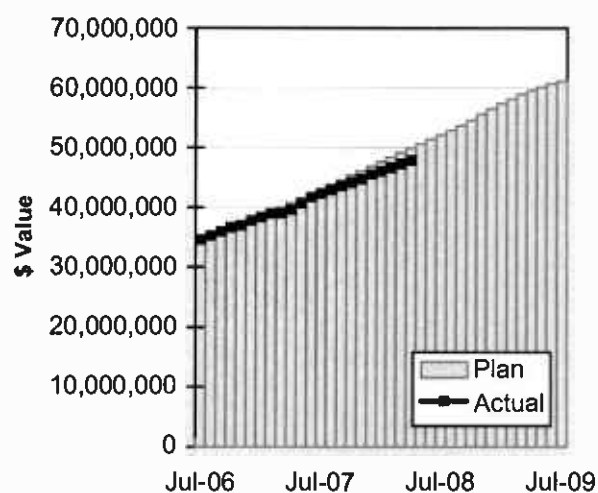


## STAFFING STATUS

**DIRECT AGENCY - FTES**

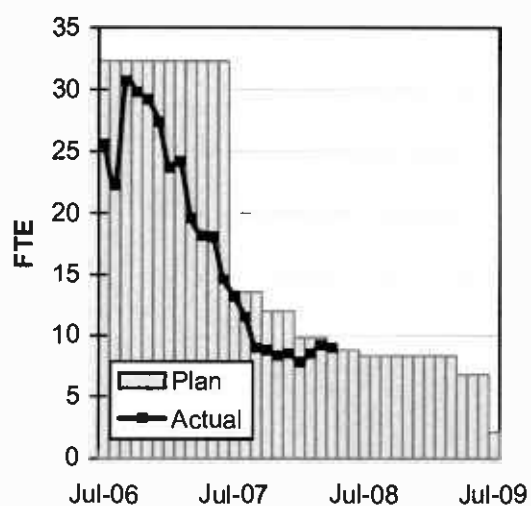


**DIRECT AGENCY - COST**

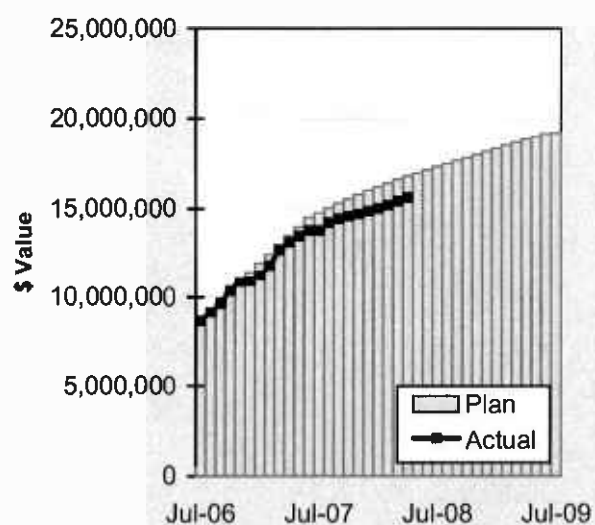


Staff Expenditures are incurred through April 2008  
Plan represents Current Budget

**CONSTRUCTION MGMT – FTES**



**CONSTRUCTION MGMT - COST**

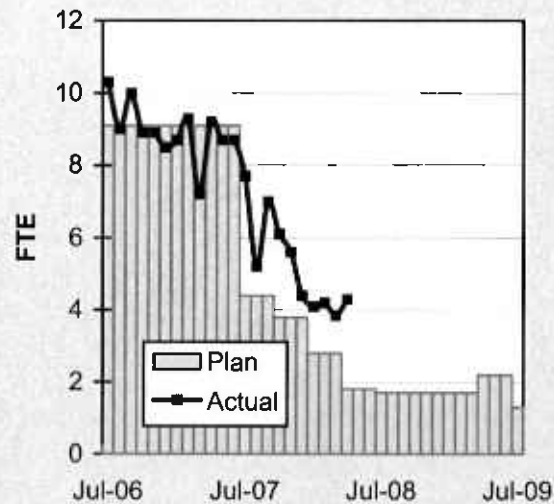


Staff Expenditures are incurred through April 2008  
Plan represents Current Budget

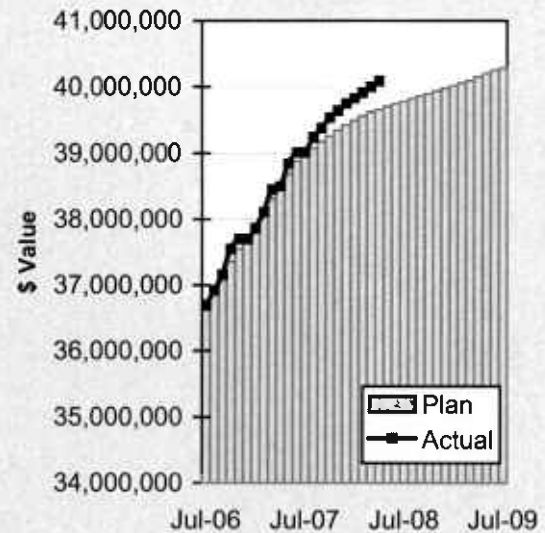


## STAFFING STATUS

ELRT PARTNERS - FTES



ELRT PARTNERS - COST



Staff Expenditures are incurred through April 2008  
Plan represents Current Budget

## REAL ESTATE STATUS

- For C0803, the tunnel portion of the alignment, 40 parcels were required for acquisition (11 full takes, 4 partial takes, 20 sub-surface easements/temporary construction easements, 3 sub-surface easements/building protection, and 2 building protections).
- For C0803, the at-grade portion of the alignment, 27 parcels were required for acquisition (17 full takes, 9 partial takes and 1 surface easement). Nine parcels were required for the LAUSD Ramona Opportunity High School site reconfiguration.
- For C0802, 2 parcels were required (1 surface easement and 1 full take parcel).
- Two Encroachment Permits were obtained from Caltrans for the C0803-Tunnel. Three street closures were obtained from the City of LA.

### REAL ESTATE ACQUISITION SCHEDULE SUMMARY

<i>Number of Parcels</i>	Required	Acquired	On Schedule	Behind Schedule	
				Number	Avg. Calendar Days
This Period	69	69	0	0	0
Last Period	69	69	0	0	0

### REAL ESTATE STATUS TO DATE BY CONTRACT ACQUISITION PHASE

CONTRACT NO.	Number of Parcels (A+B+C+D+E)	Agreements Signed (A)	Parcels in Condemnation (B)	Under Negotiation (C)	In Appraisal Process (D)	Inactive Parcels (E)	Parcels Available
C0803-Tunnel	40	40	0	0	0	0	40
C0803-At-Grade	27	27	0	0	0	0	27
C0802	2	2	0	0	0	0	2
TOTAL	69	69	0	0	0	0	69
LAST PERIOD	69	69	0	0	0	0	69

## **ENVIRONMENTAL STATUS**

- Discussions continue with Cal State University Los Angeles to discuss proposed research projects on the remains and artifacts retrieved from the Los Angeles Crematorium site.
- Evergreen Cemetery is proceeding with activities to clean up the maintenance yard area adjacent to the re-burial site purchased by Metro.
- Received a proposal from Archeo Paleo Associates to cover the curation of artifacts at the San Bernardino County Museum.

## **COMMUNITY RELATIONS STATUS**

- Distributed eight Construction Notices which reached approximately 12,925 residences/businesses. Activities included deck removal for Phases I and II, traffic switch at 3<sup>rd</sup>/Indiana, concrete pours and water valve replacements.
- Met with one hundred three residents/business owners to coordinate construction activities.
- Delivered thirteen Open During Construction banners and thirty-six banners promoting the project.
- Held monthly Executive Review Advisory Committee Meeting and Review Advisory Committee Meeting.
- Supported the Little Tokyo Cherry Blossom Festival.

## **QUALITY ASSURANCE STATUS**

- Quality Management continues to review contractor's monthly Asphalt, Concrete Compressive Strength and Soils Compaction reports - areas of concern are coordinated to resolution with the onsite lab representative.
- The results of field surveillance activities continue to be identified in Weekly Surveillance Reports including color digital pictures identifying sites of surveillance and issues of concern.
- Mainline Ductbank damage caused by follow-on concrete forming work was addressed by the contractor in a nonconformance report. Meetings are being conducted to resolve this issue.

## **SAFETY STATUS**

- Participated in weekly progress meetings with Construction Managers and ELRTC management personnel to discuss safety related issues and construction schedule.
- Conducted Monthly All Hands Safety Meeting with ELRTC Safety personnel.
- Participated in Contractor Readiness Review Meetings and Rail Activation Meeting.
- Monitored construction activities on a daily basis including weekends to ensure contractor compliance with Contract Specification.
- ELRTC and their subcontractors reported one recordable incidents and 133,046 work hours for the month of April 2008. A total of thirty-eight (38) recordable incidents have occurred Project to Date. Total Project to Date work hours are 3,057,917. Injury Rates for Recordable incidents are 2.5; well below the published incident rate of 5.3.

## **ART DEVELOPMENT STATUS**

- Coordination meetings with Construction for artwork fabrication/installation schedules for eight stations.

**THIRD PARTY AGREEMENT STATUS**

Third Party	Type of Agreement	Forecast Execution Date	Required Need Date	Status/ Comments
City of Los Angeles	Amendment	Completed	N/A	Executed December 2002.
Los Angeles County	Master	Completed	N/A	Executed April 2003.
Caltrans (All Projects)	Master	Completed	N/A	Executed July 2003.
Caltrans (101)	Design	Completed	N/A	Executed July 2003.
Caltrans (101)	Construction	Completed	N/A	Executed September 2003.
Caltrans (101)	Maintenance	12/08	Project Completion	The initial negotiation meeting was held on 1/9/03. LACMTA received a draft from Caltrans on 1/22/04. LACMTA reviewed and submitted the agreement to Caltrans on 2/10/04. A follow up call was made on 10/20/05 but no response to date.
LADWP (Water/Power)	Amendment	5/08	*6/04	LACMTA Management, County Counsel, and LACMTA Board staff have participated in meetings with DWP to complete negotiations, since the "Deadline and Delay" clause is not acceptable to LADWP. Alternative language was forwarded to LACMTA Management and County Counsel for review on 10/7/05. LACMTA CEO is to speak with LADWP CEO.
So. Cal. Edison Co.	Amendment	N/A	N/A	SCE Executive Legal Branch stated on 2/25/05 they have no intention of signing agreement.
The Gas Company	Amendment	Completed	N/A	Executed May 2005.
SBC/AT & T	Amendment	Completed	N/A	Executed May 2005. SBC has been acquired by AT&T and has formed a new corporation TCM for work in Southern California. A new agreement has been negotiated with Metro and TCM, which was approved by the Metro Board in April. The new agreement mirrors the SBC agreement except for some minor changes in the insurance language.
Adelphia Cable Company	Amendment	5/08	*6/04	LACMTA received a draft from Adelphia for review. LACMTA Management and County Counsel reviewed the amendment and returned the document to Adelphia with comments. Adelphia's Legal Department is reviewing the document and follow-up calls were made on 10/20/05 and 11/16/05.
Calif Wtr Service Co	Master	Completed	N/A	Executed May 2005.
L.A. County Sanitation Districts	N/A	N/A	N/A	In a letter dated 3/26/03, the Sanitation District stated that there is not a need for an agreement since there are no relocations related to their facilities. The Sanitation District will review submittals related to encasements of their facilities on Indiana Street.
MCI Worldcom	Amendment	Completed	N/A	Executed May 2005.
Metropolitan Wtr Dist	Amendment	Completed	N/A	Executed May 2003.

**THIRD PARTY AGREEMENT STATUS**

Third Party	Type of Agreement	Forecast Execution Date	Required Need Date	Status/ Comments
Verizon Wireless	Amendment	5/08	*6/04	The revised draft amendment was hand delivered to Verizon on 11/19/03 and an electronic copy was sent to them 2/19/04. Verizon did respond with comments, which were reflected in a revised agreement sent 4/05. Verizon legal is completing final review. Follow up calls were made on 10/20/05 and 11/16/05. Verizon has now joined MCI and once the legal work is complete in late February 2006, LACMTA may be able to use the MCI Agreement for Verizon work. E-mailed MCI Agreement to Verizon Representative for consideration as overall agreement covering Verizon and MCI as the new Verizon.
GST	N/A			Facilities are not impacted by Eastside Construction
Exxon Mobil Oil Company	N/A			Facilities are not impacted by Eastside Construction
Pacific Pipeline Company	N/A			Facilities are not impacted by Eastside Construction
Kinder Morgan Pipeline Company	N/A			Facilities are not impacted by Eastside Construction
Tosco Refining Company	N/A			Facilities are not impacted by Eastside Construction
Equilon Pipeline Company	N/A			Facilities are not impacted by Eastside Construction
Level 3 Communications	N/A			Facilities are not impacted by Eastside Construction
Broadwing Communications	N/A			Facilities are not impacted by Eastside Construction
Eller Media	N/A			Facilities are not impacted by Eastside Construction

\* Work will be performed under the current MCA and will not delay ongoing work.

**Metro Gold Line Eastside Extension**  
**Monthly Project Status Report**

**April 2008**

**CPUC CROSSING SUMMARY**

Batch	Application Status	Initial Package Submittal to MTA	Field Diagnostic Meeting	Revised Drawings Due to MTA	Draft Write-up to MTA	Draft Package Sumbittal to PUC Local office and Agencies	Final Package Submittal to PUC	CPUC Final Approval
1	Complete	8/5/02	8/12/02	8/26/02	9/6/02	9/6/02	9/6/2002	Approved
2	Complete	10/4/02	10/11/02	10/25/02	11/6/02	11/22/02	11/22/2002	Approved
3	Complete	2/6/03	2/27/03	3/10/03	1/27/03	4/11/02	4/18/2003	Approved
4	Complete	12/14/02	1/15/03	1/29/03	11/13/02	5/5/03	6/18/2003	Approved
4A	Complete	1/24/03	1/29/03	3/14/03	2/7/03	9/5/03	1/23/2004	Approved
6	Complete	3/19/03	3/26/03	6/20/03	2/7/03	9/5/03	9/12/2003	Approved
7	Complete	12/11/02	12/18/02	3/31/03	2/7/03	5/5/03	7/25/2003	Approved
8	Complete	11/26/02	12/18/02	3/31/03	11/15/02	6/6/03	5/21/2004	Approved
9	Complete	1/20/03	1/29/03	3/31/03	11/22/02	8/29/03	9/12/2003	Approved
10	Complete	12/11/03	12/18/02	3/10/03	11/22/02	5/5/03	8/29/2003	Approved
11	Complete	2/13/03	2/27/03	4/18/03	12/6/02	6/6/03	8/29/2003	Approved
12	Complete	2/13/03	2/27/03	4/18/03	12/13/02	6/6/03	9/5/2003	Approved
13	Complete	2/6/03	2/20/03	4/18/03	2/21/03	6/6/03	9/1/2004	Approved
14	Complete	1/8/03	1/15/03	3/14/03	11/12/02	8/29/03	10/30/2003	Approved
15	Complete	2/26/03	N/A	N/A	2/21/03	6/6/03	8/29/2003	Approved
16	Complete	2/26/03	N/A	N/A	2/28/03	6/6/03	8/29/2003	Approved
17	Complete	1/8/03	1/15/03	N/A	2/14/03	5/5/03	6/13/2003	Approved
18	Complete	1/8/03	1/15/03	3/20/03	2/14/03	5/5/03	6/13/2003	Approved
Agency Responsible		ELRTP	MTA	ELRP	ELRTP	MTA	MTA	

Batch No. 5 has been removed, as the Midway Yard will be utilized.

**SHADED AREAS REPRESENTS COMPLETION**

All applications are approved.

Batch Descriptions			
1	1st / Alameda	10	3rd / Ford
2	Alameda / Temple		3rd / McDonnel
	1st / Hewitt	11	3rd / Arizona
	Ped Crossings @ 1st / Alameda Station		3rd / Mednik
3	1st / Vignes		3rd / Civic Center Drive
4	1st / Lorena		3rd / La Verne
4A	Indiana/1st	12	3rd / Driveways to Sherriff's Station
	Indiana/3rd		3rd / Wood / Via Corona / Pomona / Beverly
	Indiana Pedestrian Crossing	13	3rd / 60 Fwy WB Connector
6	1st / Mission		3rd / 60 Fwy over ELRT
	1st / Anderson		3rd / 710 Fwy SW Connector
	1st / Clarence		3rd / Bridge over 710 Fwy
	1st / Utah	3rd / 710 Fwy SE Connector	
	1st/Gless Pedestrian Crossing	14	Union Station Service Road
7	3rd / Rowan	15	1st / Santa Fe
			1st / Myers
8	3rd / Gage	16	1st / MTA
	3rd / 60 Fwy WB Ramps		1st / BNSF
	3rd /Downey		1st / Union Pacific

**Metro Gold Line Eastside Extension**  
**Monthly Project Status Report**

**April 2008**

**CONTRACT C0802 STATUS**

<b>Description: 101 Freeway Bridge Overcrossing</b> <b>Contractor: Brutoco Engineering &amp; Construction</b>		<b>Contract No. C0802</b> <b>Status as of: May 2, 2008</b>					
<b>Progress/Work Completed:</b> * Bridge work was completed in March 2007 * Plant Maintenance period achieved November 2007  <b>Areas of Concern:</b> * None		<b>Major Activities (In Progress):</b> * None  <b>Major Activities Next Period:</b> * None					
<b>Schedule Summary:</b>  Date of Award: 09/07/04 Notice to Proceed: 09/22/04  Original Contract Duration: 700 CD Current Contract Duration: 775 CD Elapsed Time from NTP: 904 CD *  * Note: Elapsed time to Milestone # 1 completion			Original Contract Dates	Time Extension	Current Contract	Forecast	Variance COs
		Notice to Proceed	09/22/04	0	09/22/04	09/22/04	0
		Milestone 1 - Complete Abutment No. 10	06/26/06	49	08/14/06	03/15/07	-213
		Milestone 2- Complete All Work Without Plant Establishment	08/23/06	75	11/06/06	08/06/07	-273
<b>Physical Percent Complete:</b> Physical completion ** as of this reporting period is: 100.00%  ** Note: Physical completion assessment reflects work completed and invoice amount shown in Caltrans Monthly Progress/ Expense Report No. 30.		<b>Cost Summary:</b> <span style="float: right;"><b>\$ In millions</b></span> 1. Award Value: 6.42 2. Executed Modifications: 0.00 3. Approved Change Orders: 0.00 4. Current Contract Value (1+2+3): 6.42 5. Incurred Cost: 6.42					



## CONTRACT C0803 STATUS

<div>Description: Tunnel, Stations, Trackwork &amp; Systems</div> <div>Contractor: Eastside LRT Constructors</div>	<div>Contract No. C0803</div> <div>Status as of: May 2, 2008</div>																																				
<div>Progress/Work Completed:</div> <div><div><div>* Poured Mariachi Plaza Station (MPS) entrance mid-landing slab, forced air intake structure roof and emergency exit # 2 roof slab</div><div>* Completed Mariachi Plaza Sta. temporary deck removal &amp; backfill</div><div>* Placed HVAC duct, fire protection pipe and acoustic finish at MPS</div><div>* Poured Soto Station (SS) entrance upper exterior walls, emergency exit # 2 walls, and platform invert and walls</div><div>* Started installation of electrical equipment and CMU walls at SS</div><div>* Completed 1st Street restoration at the West Portal area</div><div>* Poured upper exterior walls at East Portal mezzanine level</div><div>* Erected canopy frame at Maravilla Station</div><div>* Poured curb/gutter and placed asphalt at Indiana Sta. Park &amp; Ride</div><div>* Installed TC&amp;C room ground bus bars at A/G stations</div><div>* Completed OCS pole foundations and duct bank in Segs. 2B &amp; 4A</div><div>* Installed curved track at 3rd Street and Indiana Street</div><div>* Installed OCS poles and brackets along Segment 5</div><div>* Installed Train Control interlocking devices along Segment 7</div><div>* Excavation and installation of conduit and electric vaults at TPS-01 and TPS-03</div></div></div> <div>Areas of Concern:</div> <div><div>This month Metro and ELRTC completed the development of a rebaseline schedule, which incorporates a realistic approach to completing all remaining work and supports the project pre-revenue operations. Contract milestone # 1 completion is forecast for April 1, 2009. The current forecast does not impact the FFGA ROD.</div></div>	<div>Major Activities (In Progress):</div> <div><div><div>* 1st Street restoration at Mariachi Plaza Station</div><div>* Entrance upper exterior walls at Mariachi Plaza Station</div><div>* Install mechanical/electrical equipment at Mariachi Plaza Station</div><div>* Soto Station entrance roof and emergency exit # 2 roof</div><div>* Install CMU walls, fire protection pipe and acoustic finish at SS</div><div>* Install exhaust vent shaft structure and HVAC duct at E. Portal</div><div>* Fab. underground stations emerg. fans, escalators &amp; elevators</div><div>* Civil construction at Indiana, Maravilla and Pico/Aliso stations</div><div>* Place reeway and duct in A/G stations TC&amp;C rooms</div><div>* MSE wall coping south of the US 101 Bridge Overcrossing</div><div>* Track installation on US 101 Bridge Overcrossing and in tunnels</div><div>* Segments 1, 2B, 4B and 5 guideway/track construction</div><div>* Street improvements (south) at 1st Street &amp; Indiana intersection</div><div>* Pull wire at TPS-05 and TPS-06</div><div>* String OCS wire and place "C" arms in Segment 5</div><div>* Train Control equipment installation - Segments 1, 4B, 5 and 7</div></div></div> <div>Major Activities Next Period:</div> <div><div><div>* Mariachi Plaza Sta. entrance upper exterior walls and roof slab</div><div>* Mechanical and electrical installation at Mariachi Plaza Station</div><div>* Soto Station entrance exterior walls and roof slab</div><div>* Soto Station platform deck and CMU walls at mezz. level</div><div>* East Portal complete F.A.I and exhaust concrete structure</div><div>* Complete access walkways at A/G stations</div><div>* Indiana Station canopy erection</div><div>* Track installation on Segments 1 and 3 ( tunnels)</div><div>* TPS-01and 03 and Ancillary Switch Gear construction</div><div>* OCS equipment and wire installation - Segments 2B, 4A and 4B</div><div>* Install Train Control and Communications throughout the project</div></div></div>																																				
<div>Schedule Summary:</div> <div><div><div>Date of Award:</div><div>06/01/04</div></div><div><div>Notice to Proceed:</div><div>07/01/04</div></div><div><div>Original Contract Duration:</div><div>1795 CD</div></div><div><div>Current Contract Duration:</div><div>1800 CD</div></div><div><div>Elapsed Time from NTP:</div><div>1402 CD</div></div><div><div>Option D Contract duration</div><div>90 CD Complete</div></div></div>	<table><tr><th></th><th>Original Contract Dates</th><th>Time Extension</th><th>Current Contract</th><th>Forecast</th><th>Variance CDs</th></tr><tr><td>Notice to Proceed</td><td>07/01/04</td><td>0</td><td>07/01/04</td><td>07/01/04</td><td>0</td></tr><tr><td>Milestone 1 - Contract Completion. Complete all systems integration testing and ready for MTA's pre-revenue operation testing.</td><td>12/31/08</td><td>9</td><td>01/09/09</td><td>04/01/09</td><td>-82</td></tr><tr><td>Milestone 3 - Complete Universal Fare System Equipment area.</td><td>04/30/08</td><td>5</td><td>05/05/08</td><td>01/05/09</td><td>-245</td></tr><tr><td>Milestone 5 - Vacate all staging areas and turn over to MTA.</td><td>05/30/09</td><td>5</td><td>06/04/09</td><td>08/25/09</td><td>-82</td></tr><tr><td>Milestone 6 - Complete design and construction of Option D work.</td><td>09/28/04</td><td>0</td><td>09/28/04</td><td>09/28/04</td><td>0</td></tr></table>		Original Contract Dates	Time Extension	Current Contract	Forecast	Variance CDs	Notice to Proceed	07/01/04	0	07/01/04	07/01/04	0	Milestone 1 - Contract Completion. Complete all systems integration testing and ready for MTA's pre-revenue operation testing.	12/31/08	9	01/09/09	04/01/09	-82	Milestone 3 - Complete Universal Fare System Equipment area.	04/30/08	5	05/05/08	01/05/09	-245	Milestone 5 - Vacate all staging areas and turn over to MTA.	05/30/09	5	06/04/09	08/25/09	-82	Milestone 6 - Complete design and construction of Option D work.	09/28/04	0	09/28/04	09/28/04	0
	Original Contract Dates	Time Extension	Current Contract	Forecast	Variance CDs																																
Notice to Proceed	07/01/04	0	07/01/04	07/01/04	0																																
Milestone 1 - Contract Completion. Complete all systems integration testing and ready for MTA's pre-revenue operation testing.	12/31/08	9	01/09/09	04/01/09	-82																																
Milestone 3 - Complete Universal Fare System Equipment area.	04/30/08	5	05/05/08	01/05/09	-245																																
Milestone 5 - Vacate all staging areas and turn over to MTA.	05/30/09	5	06/04/09	08/25/09	-82																																
Milestone 6 - Complete design and construction of Option D work.	09/28/04	0	09/28/04	09/28/04	0																																
<div>Physical Percent Complete:</div> <div>Physical completion * as of this reporting period is: 78.45%</div> <div><div>* Note: Physical completion assessment reflects work completed and work in progress.</div></div>	<div>Cost Summary:</div> <div>\$ In millions</div> <div><div><div>1. Award Value:</div><div>600.45</div></div><div><div>2. Executed Modifications:</div><div>10.64</div></div><div><div>3. Approved Change Orders:</div><div>0.80</div></div><div><div>4. Current Contract Value (1+2+3):</div><div>611.89</div></div><div><div>5. Incurred Cost:</div><div>501.75</div></div></div>																																				

# CONTRACT E700051F STATUS

<b>Description: 1st Street Bridge Strengthening</b> <b>Contractor: The Griffith Company</b>		<b>Contract No. E700051F</b> <b>Status as of: May 2, 2008</b>					
<b>Progress/Work Completed:</b>  * Bridge turned over to Metro on October 26, 2007		<b>Major Activities (In Progress):</b>  * None					
<b>Areas of Concern:</b>  * None		<b>Major Activities Next Period:</b>  * None					
<b>Schedule Summary:</b>			Original Contract Dates	Time Extension	Current Contract	Forecast	Variance CDs
Date of Award: 01/19/07		Notice to Proceed	02/06/07	0	02/06/07	02/06/07	0
Notice to Proceed: 02/06/07		Milestone 1 - Substantial Completion	10/15/07	30	11/14/07	11/14/07	0
Original Contract Duration: 251 CD							
Current Contract Duration: 281 CD							
Elapsed Time from NTP: 281 CD							
<b>Physical Percent Complete:</b>		<b>Cost Summary: \$ In millions</b>					
Physical completion as of 11/14/07: 100.00% *		1. Award Value: * 4.26					
		2. Executed Modifications: 0.00					
		3. Approved Change Orders: 0.05					
		4. Current Contract Value (1+2+3): 4.31					
		5. Incurred Cost: 4.31					
* As reported by the City of Los Angeles, Department of Contract Administration		* City of Los Angeles					

## CONTRACT P2550 STATUS

<b>Description: 2550 Rail Vehicle Program</b> <b>Contractor: AnsaldoBreda, Italy (AB)</b>	<b>Contract No. P2550</b> <b>Status as of: May 2, 2008</b>				
<b>Progress/Work Completed:</b> 1. Pilot Vehicles 701 & 702 are used as initial system training vehicles for maintenance staff. Next action is to transport 701/702 vehicles to Pittsburg for upgrade. The Project Team is evaluating merits of transporting 701/702 vehicles in 2008. 2. Vehicle final assembly work continues in Pittsburg, CA. 3. Shipment of foreign and domestic parts for final assembly continue to arrive in Pittsburg, CA. 4. Vehicle shipment from Pittsburg to Los Angeles is on hold until vehicle configuration is finalized. Shipment of carshells from Italy to Pittsburg is ongoing. 5. Several Engineering meetings with AB have been held to evaluate progress and to close open items, including visits to Pittsburg Plant. 6. Vehicle 706 and 708 were conditionally accepted for operation on Metro Gold Line only in March. 7. Vehicle No. 710 and 704 are the next vehicles to be accepted. <b>Areas of Concern:</b> Vehicles 706 and 708 have been placed in rush hour revenue service. However, vehicles are experiencing propulsion problems. AB Engineers are testing vehicles and corrective actions are being implemented.	<b>Major Activities (In Progress):</b> 1. AnsaldoBreda's manufacturing plants in Pistopia and Naples, Italy continue to prepare carshells and subassemblies for shipment to U.S.A.. Pittsburg plant continues vehicle assembly work. 2. Testing of Vehicles 710 & 704 is ongoing in Los Angeles for next vehicle acceptance. Pittsburg plant continues vehicle assembly work. 3. A four day Project Meeting in Los Angeles with AnsaldoBreda is scheduled for May 6-9.  <b>Major Activities Next Period:</b> 1. Several Technical Progress meetings will be held to emphasize the urgency of resolution of remaining critical items for final acceptance of vehicles. 2. Cars 710 and 704 will be final tested for Conditional Acceptance in May 2008. 3. AB to continue working propulsion issues and issue final software release.				
<b>Schedule Summary:</b> Date of Award: 04/24/03 Notice to Proceed: 06/06/03  Original Contract Duration: 1442 CD  Elapsed Time from NTP: 1728 CD  <b>Note:</b> Metro and AnsaldoBreda agreed to Mod No. 8 which extended the Options ordering period from April 2008 to October 2008. Metro has requested an updated schedule from AB to determine the estimated completion schedule. A draft schedule of vehicle delivery has been submitted for Metro's Management review and comments		Quantity	Contract Total Quantity	Balance Due	Transferred from AB to Metro
	Notice to Proceed 6/6/2003A				
	Vehicles Assembled	31	50	19	9
	LRV Shipment to Commissioning Site - Metro	9	50	41	
	LRV Accepted for Revenue Service by Note 1	2	50	48	
	LRV in Revenue Service	2	50	48	
	* Note 1 - Vehicles No. 706 and 708 were conditionally accepted for Metro Gold Line operation only.				
<b>Physical Percent Complete:</b>  Percent of LRVs assembled = 31/50 = 62%  Percent Work Product Invoiced through Apr. 2008 is 47%	<b>Cost Summary:</b> <span style="float: right;"><b>\$ In millions</b></span> 1. Award Value: Pasadena (Proj. No.: 800151) 126.99 Eastside Ext. (Proj. No.: 800088) 31.75 <div>Total Award Value 158.74</div> 2 Executed Modifications 0.00 3 Approved Change Orders: 0.00 4 Current Contract Value (1 + 2 + 3): 158.74 5 Payments or invoices in process: 74.35				

## **CONSTRUCTION PHOTOGRAPHS**



Maravilla Station Canopy.



Steady arm being installed to the OCS pole in Segment 7.

## **CONSTRUCTION PHOTOGRAPHS**



Installation of meter and switch cabinets for TPS-5.



Construction of Park and Ride lot at Indiana Station.



## **CONSTRUCTION PHOTOGRAPHS**



View of guideway from 1<sup>st</sup> Street looking toward Indiana Station.



Earth backfill and street restoration over the underground structure at Boyle Heights/Mariachi Plaza Station.

## **CONSTRUCTION PHOTOGRAPHS**



Street restoration at Boyle Heights/Mariachi Plaza Station.

## **APPENDIX**

### **COST AND BUDGET TERMINOLOGY**

**ESTIMATED PROJECT COSTS:** Estimated project costs are based upon the current project cost estimates that are produced during the engineering design phase.

**COMMITMENTS:** The total of actual contract awards, executed change orders or amendments, approved work orders of Master Cooperative Agreements, offers accepted for purchase of real estate, and other LACMTA actions that will result in specific expenditures at a future time.

**INCURRED COST:** The total value of work performed to date of services received, and acquired materials or properties.

**EXPENDITURES:** The total dollar amount of checks written by the LACMTA's Accounting department for contractor or consultant invoices, third party invoices, staff salaries, and closing payments for escrow accounts that is reported in the LACMTA's Financial Information System (FIS).

**CONSTRUCTION:** Includes guideways, yards and shops, systems equipment, stations, and vehicles.

**PROFESSIONAL SERVICES:** Includes general engineering, construction management services, consultant design support services during construction, legal counsel, and agency (LACMTA staff) costs.

**RIGHT-OF-WAY:** Includes real estate appraisals, purchase cost of parcels, easements, right-of-entry permits, escrow fees, and tenant relocation.

**UTILITY/AGENCY FORCE ACCOUNT:** Includes work by outside agencies and utilities in design coordination and review.

**CONTINGENCY:** A fund established at the beginning of a project to provide for anticipated but unknown additional costs that may arise during the course of the project.

**SPECIAL CONDITIONS:** Includes utilities relocation, environmental compliance and mitigation, master cooperative agreements, insurance program, artwork, systems integration testing and pre-revenue operations.



## **APPENDIX**

### **LIST OF ACRONYMS**

AFE	Authorization For Expenditure
ATC	Automatic Train Control
CADD	Computer Aided Drafting and Design
CALTRANS	California Department of Transportation
CD	Calendar Day
CM	Construction Manager
CMAQ	Congestion Mitigation Air Quality
CN	Change Notice
CO	Change Order
CNFA	Concurrent Non-FFGA Project Activities
CPM	Critical Path Method
CPUC	California Public Utilities Commission
CR	Camera Ready
CTC	California Transportation Commission
CUD	Contract Unit Description
DB	Design/Build
DBB	Design/Bid/Build
DD	Design Development
DOT	Department of Transportation
DWP	Department of Water and Power
EIR	Environmental Impact Report
EIS	Environmental Impact Statement
EPBM	Earth Pressure Balance Machine
ESP	Eastside LRT Partners
FAR	Federal Acquisition Regulation
FD	Final Design
FEIS	Final Environmental Impact Statement
FEIR	Final Environmental Impact Report
FFGA	Full Funding Grant Agreement
FIS	Financial Information System
FSEIR	Final Supplemental Environmental Impact Report
FSEIS	Final Supplemental Environmental Impact Statement
FTA	Federal Transit Administration
FTE	Full Time Equivalent
GDSR	Geotechnical Design Summary Report
IFB	Invitation for Bid
IPO	Integrated Project Office
JV	Joint Venture
LA	Los Angeles
LABOE	Los Angeles Bureau of Engineering
LACFCD	Los Angeles County Flood Control District
LACMTA	Los Angeles County Metropolitan Transportation Authority
LADOT	Los Angeles Department of Transportation

**APPENDIX**  
**LIST OF ACRONYMS (Continued)**

LADPW	Los Angeles Department of Public Works
LADWP	Los Angeles Department of Water and Power
LAUSD	Los Angeles Unified School District
LNTP	Limited Notice To Proceed
LONP	Letter Of No Prejudice
LRT	Light Rail Transit
LRTP	Long Range Transportation Plan
LRV	Light Rail Vehicle
MIS	Major Investment Study
MPSR	Monthly Project Status Report
N/A	Not Applicable
NEPA	National Environmental Protection Act
NPDES	National Pollution Discharge Elimination System
NTE	Not to Exceed
NTP	Notice To Proceed
OCIP	Owner-Controlled Insurance Program
P3	Primavera Project Planner® (scheduling software)
PC	Project Control
PE	Preliminary Engineering
PEER	Permit Engineering Evaluation Report
PGL	Pasadena Gold Line
PIP	Project Implementation Plan
PM	Project Manager
PMA	Project Management Assistance
PMIP	Project Management Implementation Plan
PMOC	Project Management Oversight Consultant
PMP	Project Management Plan (manual)
P&P	Policies & Procedures
PR	Project Report
PSR	Project Study Report
QA	Quality Assurance
QAR	Quality Assurance Report
QC	Quality Control
QPSR	Quarterly Project Status Report
RAC	Review Advisory Committee
RAG	Rail Activation Group
RFC	Request For Change
RFP	Request For Proposal
ROD	Record Of Decision
ROD	Revenue Operations Date
ROM	Rough Order of Magnitude

**APPENDIX**  
**LIST OF ACRONYMS (Continued)**

ROW	Right-Of-Way
SCAQMD	Southern California Air Quality Management District
SCE	Southern California Edison
SCRRA	Southern California Regional Rail Authority
SHA	State Highway Account
SHPO	State Historic Preservation Office
SIT	System Integration Testing
SOV	Schedule Of Value
SOW	Statement Of Work
SP	Special Provision
STIP	State Transportation Improvement Program
STP	Surface Transportation Program
TBD	To Be Determined
TBM	Tunnel Boring Machine
TCRP	Traffic Congestion Relief Program
TPSS	Traction Power Substation
TRACS	Transit Automatic Control System
UFS	Universal Fare System
USDOT	U.S. Department Of Transportation
VE	Value Engineering
WBS	Work Breakdown Structure
WP	Work Package