

Metro Gold Line Eastside Extension



METRO GOLD LINE EASTSIDE EXTENSION

MONTHLY PROJECT STATUS REPORT

THE PREPARATION OF THIS DOCUMENT HAS BEEN FINANCED IN PART THROUGH A GRANT FROM THE U. S. DEPARTMENT OF TRANSPORTATION, FEDERAL TRANSIT ADMINISTRATION (FTA), UNDER THE FEDERAL TRANSIT ACT OF 1964, AS AMENDED, AND FUNDS FROM THE STATE OF CALIFORNIA.

MAY 2008

TABLE OF CONTENTS

	Page No.
Project Overview & Status.....	1-4
Management Issues.....	4
Project Status	
• Project Scope.....	5
• Schedule	
○ Key Milestones Six-Month Lookahead	6
○ Project Master Schedule Critical Path.....	7-12
○ Critical Path Narrative.....	13
• Project Cost Status.....	14-15
• Financial/Grant Status.....	16-17
• Staffing.....	18-20
• Real Estate.....	21
• Environmental.....	22
• Community Relations.....	22
• Quality Assurance.....	23
• Safety.....	23
• Art Development.....	23
• Third Party.....	24-25
• CPUC Crossing.....	26
Contract C0802 Status	27
Contract C0803 Status	28
Contract E700051F Status.....	29
Contract P2550 Status	30
Construction Photographs	31-34
Appendices.....	35-38

PROJECT OVERVIEW & STATUS

The Metro Gold Line Eastside Extension Project is a six-mile, dual track light rail system with eight new stations and one station modification. The system originates at Union Station in downtown Los Angeles, where it connects with the Pasadena Gold Line, traveling generally east to Pomona and Atlantic Boulevards. The system will bridge State Route 101 Freeway and traverse the existing 1st Street Bridge over the Los Angeles River. The system will travel south on Alameda Street and then east on 1st Street with two stations at Alameda and Utah Streets. East of the Los Angeles River and 1st and Utah Streets, the alignment transitions to tunnel for approximately 1.7 miles, and continues beneath 1st Street to underground stations at 1st Street and Boyle Avenue and 1st Street and Soto Street. The alignment returns to the surface near the intersection of 1st Street and Lorena Streets, then jogs to the south, transitioning to follow 3rd Street with stations at Indiana Street, Ford Boulevard, Mednik Avenue and Pomona and Atlantic Boulevards.

During this period, the design package for Segment 3A was Issued for Construction (IFC). ELRTC is continuing to work with third parties agencies to resolve issues with street lighting and street improvement for the remaining civil design packages; Segments 3B and 4B. All Systems Design Packages have been completed.

Metro staff is evaluating ARINC's proposal for the expansion of the existing SCADA system. The contract award is required by mid-summer 2008 in order to support Phase II of the Systems Integration Testing, which is Metro's responsibility. The proposal amount requires LACMTA Board approval. A Board report is in preparation and will be presented to the Board in the July 2008 session.

Underground construction is proceeding per plan. The C0803 contractor continued track installation in both tunnels. Field crews poured all concrete plinth sections on both tunnels from Soto Station to Boyle Heights/Mariachi Plaza Station with the exception of those sections where rail welds are necessary. Also, the rail was placed and fastened to the steel support ties. On the segment from East Portal to Soto Station, closure pours (space between two adjacent plinth sections) were completed. West of the East Portal on the westbound tunnel, construction crews began moving FRE conduit from under the walkway to the new approved location on the opposite side where it will be encased in concrete next period.

At the Boyle Heights/Mariachi Plaza Station, the street restoration at 1st Street and Boyle Avenue was completed on time. Field crews poured curb and gutter, fine graded the road bed, paved with asphalt and striped the road. All CMU walls at the station entrance mezzanine were completed and the light pendant supports for lighting in the platform area were installed this period. The installation of electrical and mechanical equipment throughout the station as well as placement of HVAC ducts and electrical cable tray in the mechanical room continued per plan. Placement of acoustical finish material at the track level continued as well. Construction of upper walls at the station entrance is nearing completion and erection of the shoring system for the station entrance roof began this period. Also, in the ancilliary switch gear area, installation of underground conduit, vaults and grounding grid began.

At the Soto Station, construction crews installed one half of the station entrance roof shoring, placed rebar, embed and forms, and poured the concrete slab. Erection of CMU walls at the mezzanine level was completed at the west end and continued at the east end. Construction

PROJECT OVERVIEW & STATUS

of upper walls at the station entrance and at the Emergency Exit # 2 continued this period. Field crews began securing and encasing utilities and installing miscellaneous electrical and mechanical equipment. Planning for next month's station deck removal and street restoration is ongoing. At the TPS-02 site, underground conduit and electrical vault installation is proceeding per plan.

At the West Portal, construction crews completed installing the iron picket fence on top of the street barriers and began preparations for track placement.

At the East Portal, construction of the last portal structural section continued per plan. Field crews continued placing rebar, embeds and forms for the shaft structure exterior walls and poured Stair # 1. At the TC&C room, the grounding bus bar was installed and placement of anchorage for HVAC ducts and electrical cable tray supports began. The East Portal is being utilized as a staging and supply site for track installation in the tunnels.

At-grade construction is proceeding according to plan. At Union Station, construction of the temporary baggage-handling road is nearing completion and field crews have completed backfilling and have poured the concrete surface. At the US-101 Freeway LRT Bridge, construction of track plinth and installation of duct bank conduit continued per plan. Along Alameda Street (Segment 1), field crews poured the remaining coping sections on the Mechanically Stabilized Earth (MSE) wall.

Along 1st Street between Vignes Street and the West Portal (Segment 2B), construction of the guideway/track continued per schedule. The track support slab at the Clarence Street crossover was poured and the specialty rail was clipped and fastened as well. Field crews installed rebar and forms for the eastbound track invert slab west of the West Portal.

At the TPS-01 site under the 1st Street Bridge, construction crews completed installation of underground conduit, electrical vaults and the grounding grid. The latter was successfully tested as well.

Guideway construction along 1st Street between Lorena and Indiana Streets in Segment 4A is nearing completion. Street improvements at the south side of the 1st Street and Indiana Street intersection completed this period. Construction crews completed installing track and rail along the segment guideway, which included the curved track portion at the intersection of 1st Street and Indiana Street. Also completed were train control underground conduit and coupler case foundations. At the TPS-03 site at the intersection of 1st Street and Lorena Street, installation of the grounding grid and substation equipment foundations began this period. Also, construction of the guideway south of the Indiana Station (Segment 4B) continued per plan. Track plinth pours and rail placement between Alma and Ditman avenues began as well as curb and gutter installation on the north side of 3rd Street.

PROJECT OVERVIEW & STATUS

Construction along 3rd Street in Segment 5, between Ditman and Eastern Avenues, continued according to plan. Field crews continued installation of the track crossover at Rowan Avenue, where the track protection and support slabs were poured and underground conduit and foundations for train control devices began. Also, the stringing of OCS wire west of Herbert Avenue continued this period.

Between Mednik and Eastern Avenues (Segment 6), guideway construction also continued per plan. Construction crews continued installation of OCS regulating cable, train control interlocking devices and pulling AC and DC cables. The pulling and terminations of AC and DC cable at the TPS-05 site were completed this period.

At the east end of the alignment along 3rd Street between Atlantic Boulevard and Mednik Street (Segment 7), guideway construction is nearing completion. Field crews continued installation of the OCS regulating cable, train control interlocking devices, and AC and DC wire pulling. At the TPS-06 site on Atlantic Boulevard, construction crews completed AC and DC cable pulling and terminations. Punch list work in this segment is underway.

In other areas of the alignment, at-grade station construction continues according to plan. Construction crews began installation of DC breakers and auxiliary transformers inside the TC&C rooms at Atlantic and East Los Angeles Civic Center Stations and continued installation of junction boxes and cabinets. At the Maravilla Station, erection of steel canopy frames and TC&C room installation of grounding bus, cable tray, ducts and access doors were completed. Construction of walkways at the Indiana Station continued per plan. At the Pico/Aliso Station, field crews completed installation of cable tray supports and miscellaneous metals.

The fabrication and delivery of 50 light rail vehicles (LRV's), Contract No. P2550 continues per the revised plan. Ten vehicles are required for the Metro Gold Line Eastside Extension Project. Fabrication of car assemblies is done at the contractor's plant in Italy and final assembly and testing is done at the contractor's facility in California. To date, a total of thirty-one vehicles have been assembled and of those, eight vehicles are going through the pre-acceptance process before entering the final inspection and commissioning phase. There are some quality issues regarding the vehicle propulsion system that are preventing vehicle deliveries to the commissioning site. The contractor continued resolving these issues and provided Metro with a revised fabrication and delivery schedule this month. Two more vehicles are scheduled for delivery to Metro next period to begin conditional acceptance testing. The revised delivery schedule does not impact the projected Project Revenue Operations Date.

The Universal Fare System (UFS) equipment is in storage at the vendor's facility until the equipment is required for installation. Metro staff has determined that in order to minimize the risk of equipment damage and vandalism, equipment installation will be deferred to the period of Pre-Revenue Operations. The vendor has requested a six to eight week notice prior to equipment delivery.

PROJECT OVERVIEW & STATUS

The Metro Art Department continued providing technical support and coordination between the C0803 contractor and the artists responsible to provide art pieces for the eight stations. This period a bronze sculpture for the Mariachi Plaza Station was completed and delivered to ELRTC. This piece is in storage at the moment. The artists continue developing shop drawings and material sampling with multiple fabricators and providing mounting details to the C0803 contractor. Metro and ELRTC are continuing with coordination meetings, where fabrication and installation issues are discussed.

MANAGEMENT ISSUES

No Management Issues for the period ending May 2008.

PROJECT SCOPE

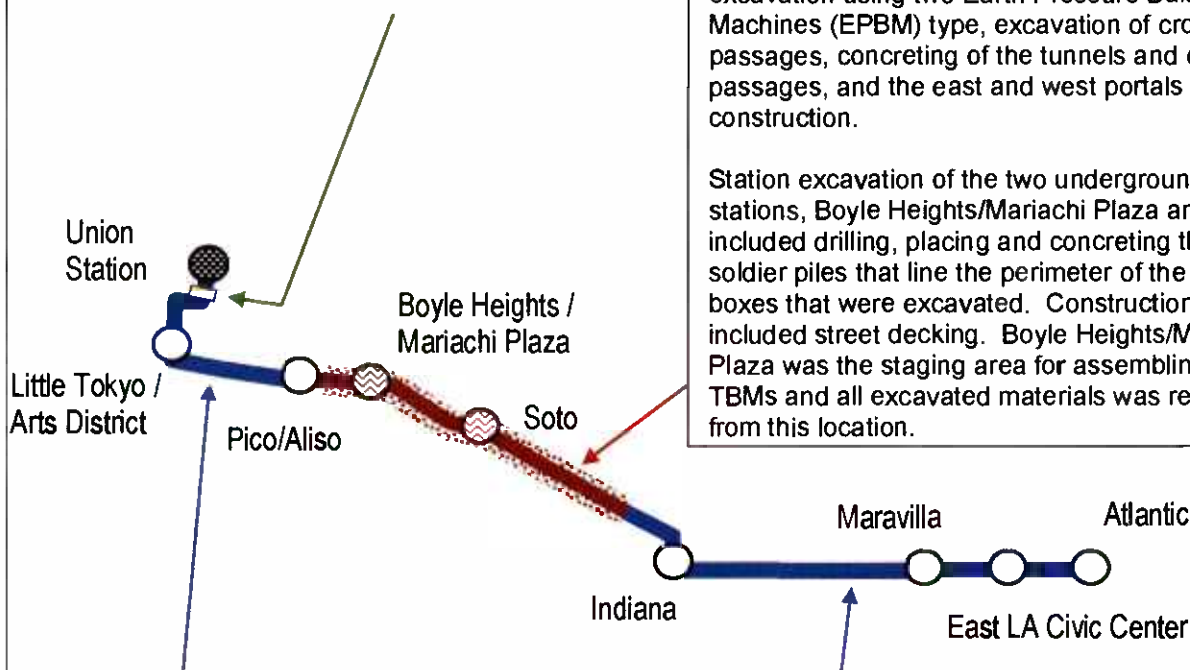
Contract C0802 – 101 Freeway Bridge

Overcrossing: The construction of the bridge was combined with Caltrans freeway improvements project. Caltrans administered the construction and the LACMTA provided oversight and was responsible for the construction costs of the bridge overcrossing.

Contract C0803 - Tunnel and Station

Excavation (Design/Bid/Build): Construction of the 1.7 mile tunnel segment included tunnel excavation using two Earth Pressure Balance Machines (EPBM) type, excavation of cross passages, concreting of the tunnels and cross passages, and the east and west portals construction.

Station excavation of the two underground stations, Boyle Heights/Mariachi Plaza and Soto, included drilling, placing and concreting the soldier piles that line the perimeter of the station boxes that were excavated. Construction also included street decking. Boyle Heights/Mariachi Plaza was the staging area for assembling the TBMs and all excavated materials was removed from this location.







Contract C0803 - Stations, Trackwork, and Systems (Design/Build): Construction of the two underground stations includes structural walls, station platforms, mezzanines, station entrances, and plazas, architectural finishes and all related mechanical and electrical work.





Construction of the six-mile alignment includes six at-grade stations, trackwork installation and testing for the entire alignment.

Systems installation and testing is inclusive of power systems, automatic train control, fire and emergency management, TRACS and communications systems. The contractor will be responsible for systems integration testing for the entire line segment prior to pre-revenue operations.

KEY MILESTONE SCHEDULE SIX-MONTH LOOKAHEAD

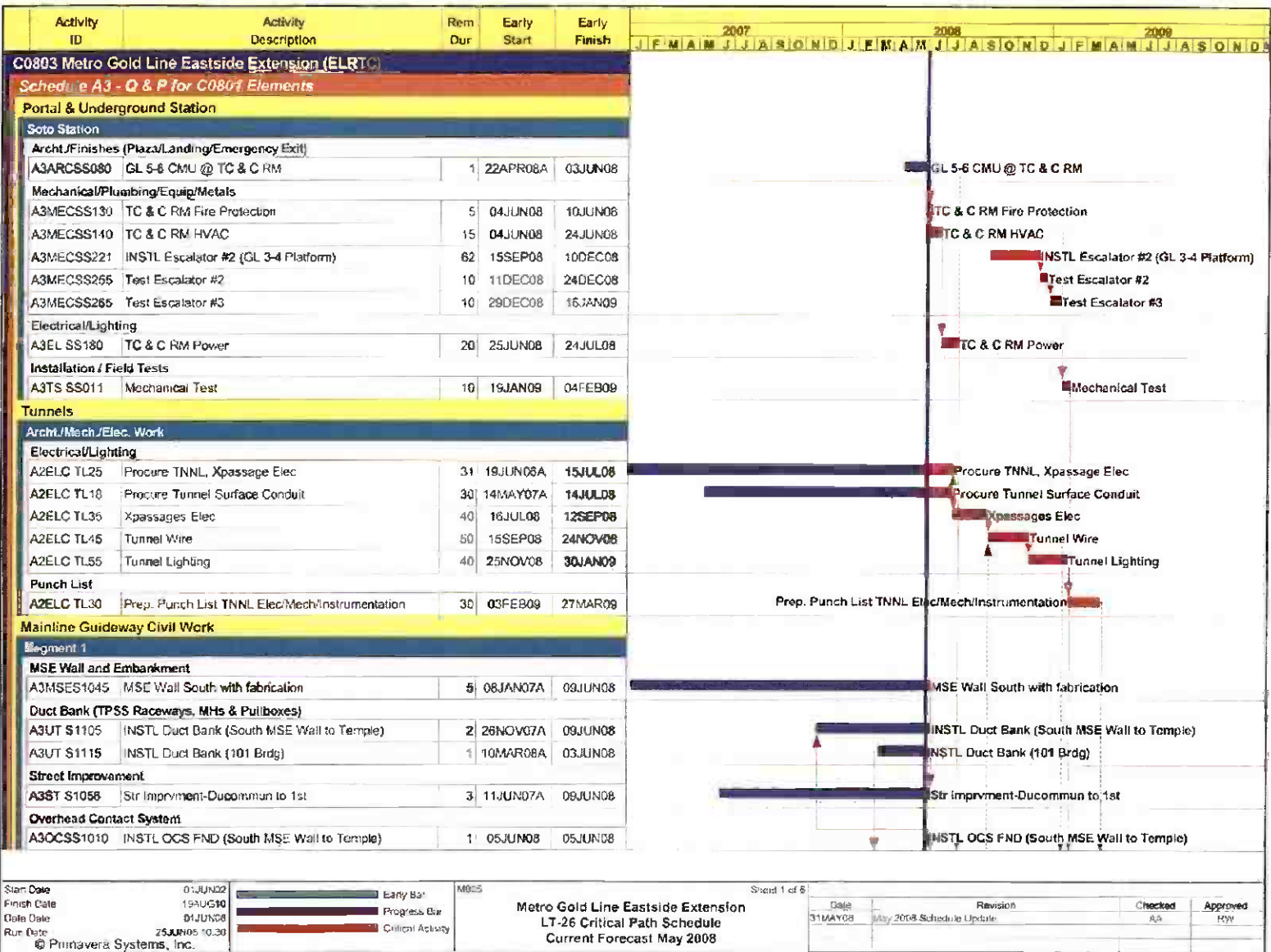
	Milestone Date	May-08	Jun-08	Jul-08	Aug-08	Sep-08	Oct-08
Started Installation of Train Control Express Cable	05/07/08	○					
Start Installation of the 34.5 KV Power Feeder Cable	06/03/08 *		○				
Complete Civil Guideway Construction - Segment 7 East End of the Alignment	06/04/08 *		○				
Start Installation of Cable Transmission System - Segment 7 East End of the Alignment	06/09/08 *		○				
Complete MSE Wall From Commercial Street to Alameda Street - Segment 1	06/09/08 *		○				
Complete Civil Guideway & Track Construction in the Tunnels - Segment 3	06/20/08 *		○				
Start Communications Installation - Atlantic Station	06/23/08 *		○				
Complete Baggage Handling Road at Union Station	06/23/08 *		○				
Complete Civil Guideway Construction - Segments 2A and 2B	06/30/08 *		○				
Complete Entrance Structure at Boyle Heights/Mariachi Plaza Station	07/03/08 *			○			
Remove Temporary Deck and Complete Street Restoration at Soto Station	07/03/08			○			
Complete Entrance Structure at Soto Station	07/08/08			○			
Start Installation of the Radio System in the Tunnels	07/23/08 *			○			
Complete Construction of the East Portal Structure	07/24/08 *			○			
Award SCADA System Upgrade Contract to ARINC	08/01/08				○		
Begin Delivery of Fans and Dampers for Underground Stations	08/08/08				○		
Complete Street Improvements Throughout the Alignment	08/18/08 *				○		
Start Installation of Elevators and Escalators at Underground Stations	08/08/08 *				○		
Complete Installation of Traction Power Substations	09/29/08					○	
Complete At-Grade Stations Canopy Installation	10/20/08 *						○
Complete Installation of Cable Transmission System	10/27/08						○

 LAC MTA Staff Milestone
  Eastside LRT Constructors
  FTA
  FTA Approval

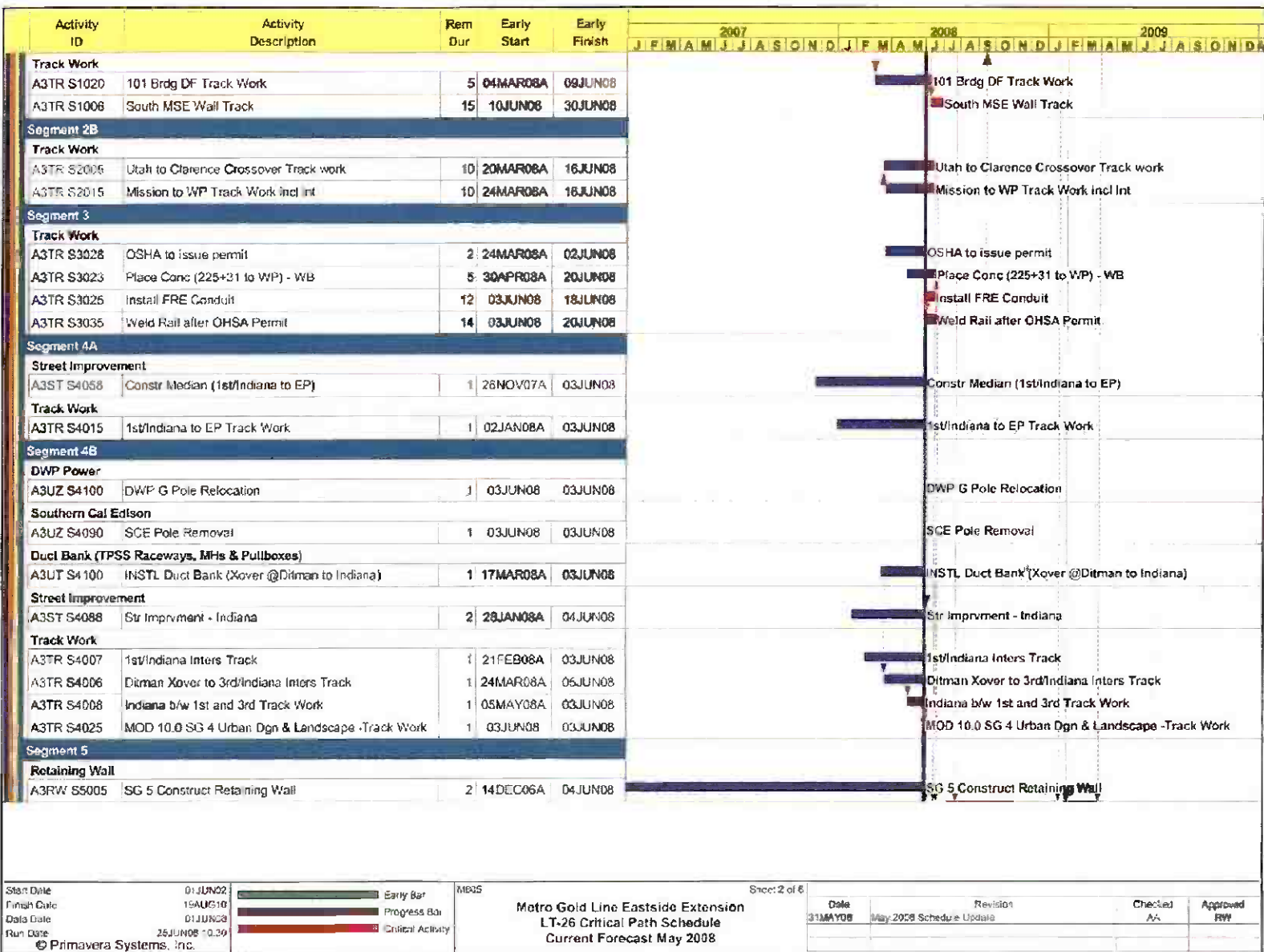
 Other Agencies
  New Date
  Metro
  LAC MTA Board Approval

Six-month lookahead schedule for Contract C0803 reflects the contractor's current CPM schedule.

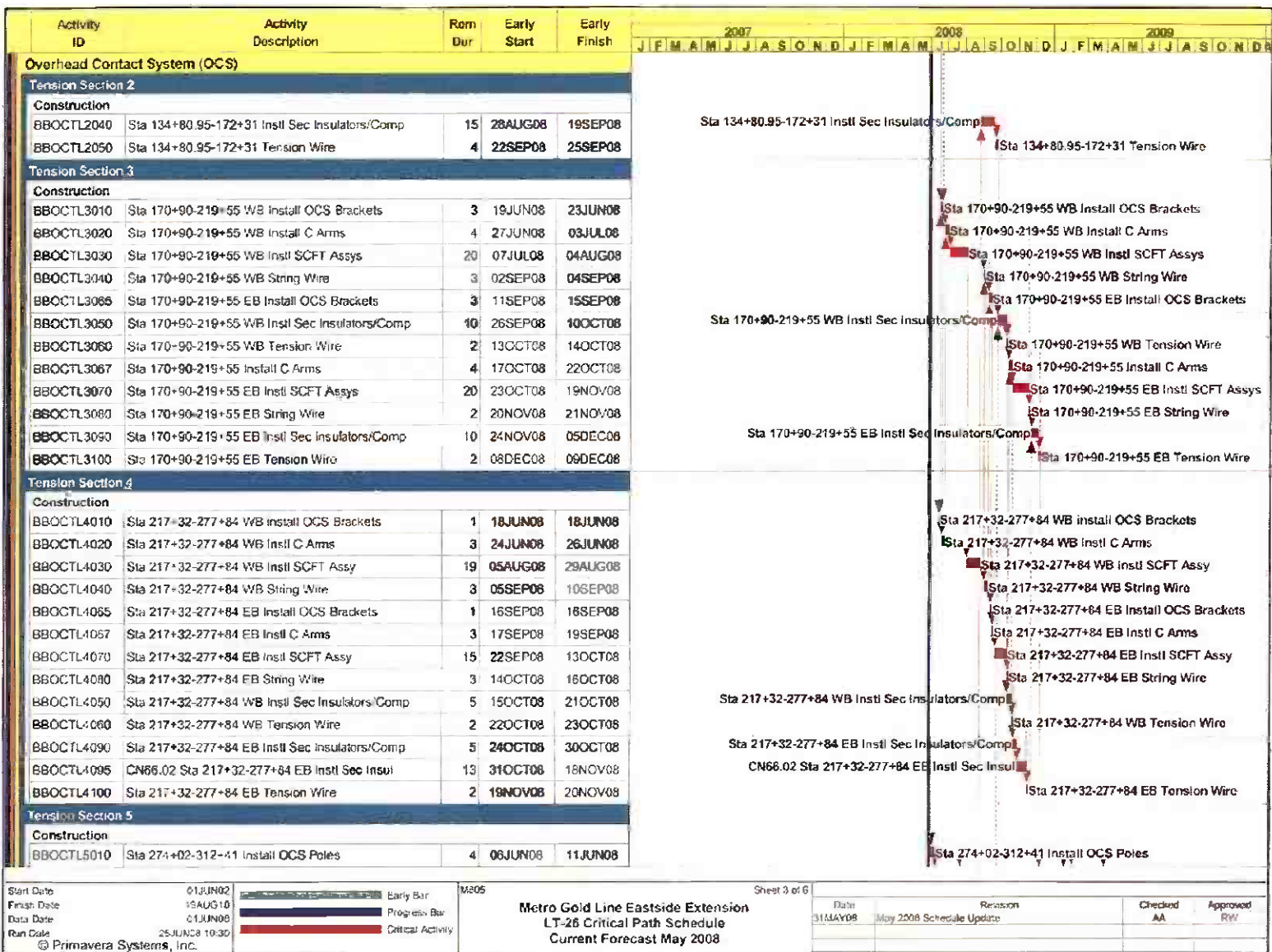
PROJECT MASTER SCHEDULE CRITICAL PATH (1 of 6)



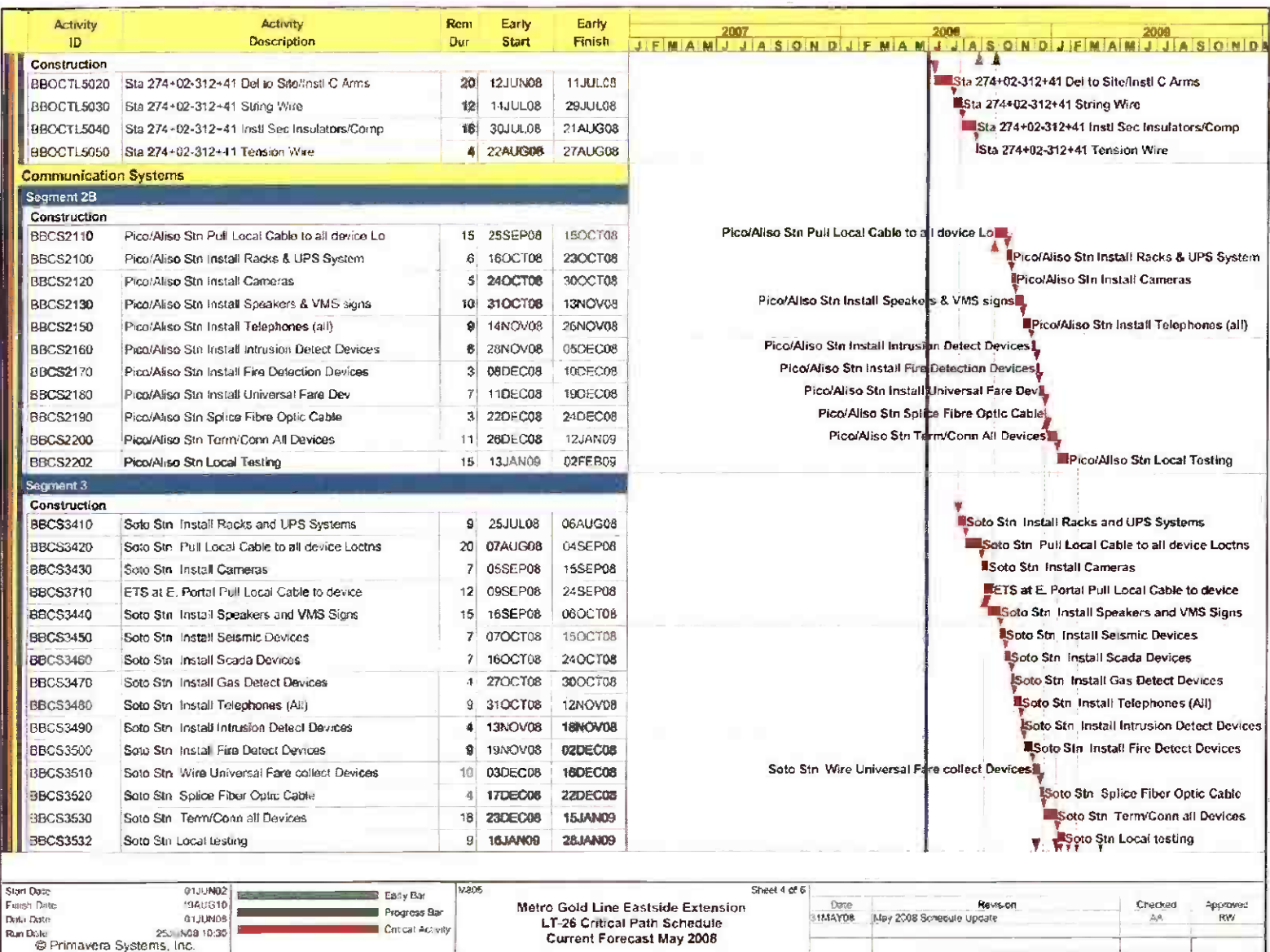
PROJECT MASTER SCHEDULE CRITICAL PATH (2 of 6)



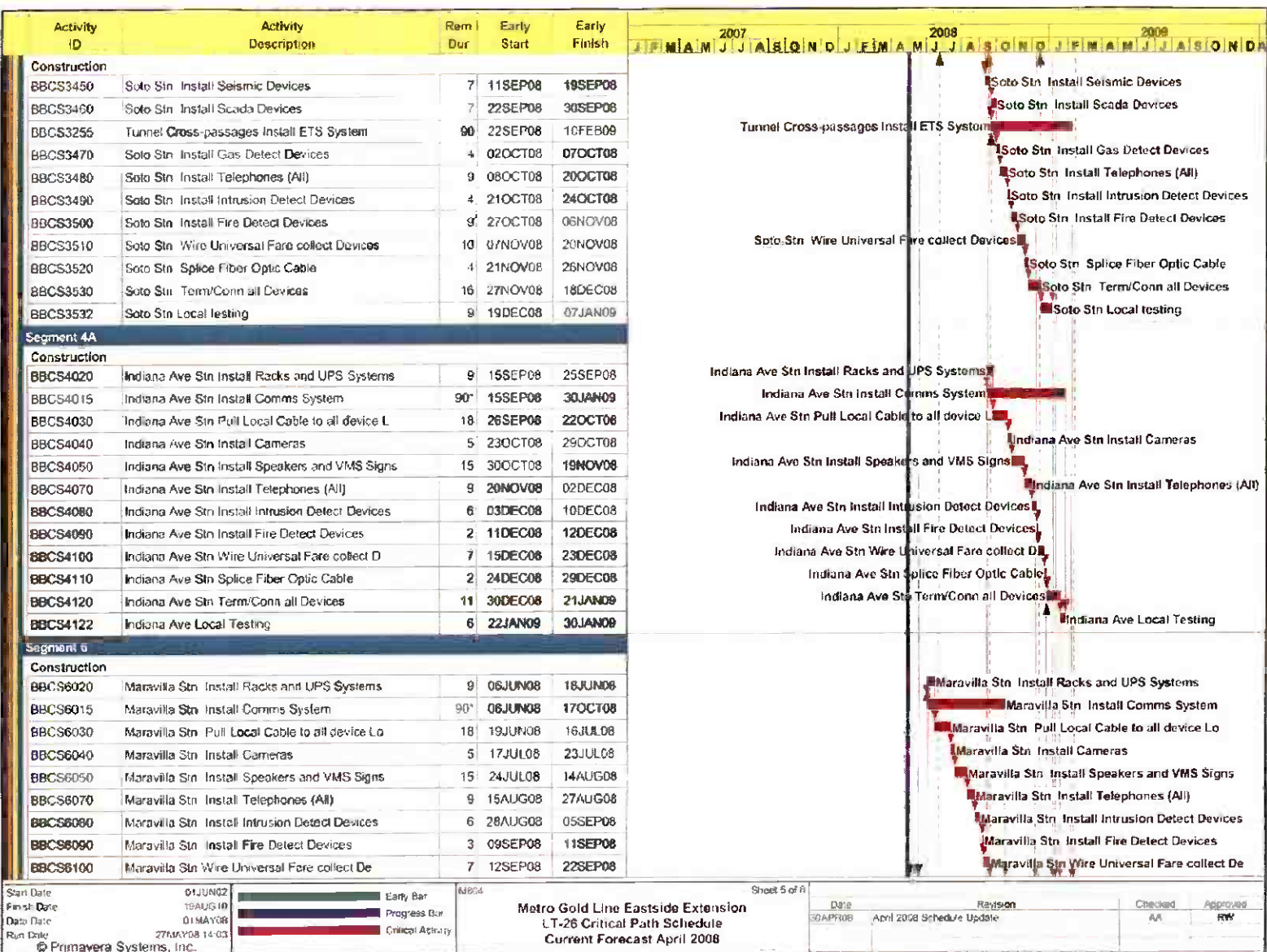
PROJECT MASTER SCHEDULE CRITICAL PATH (3 of 6)



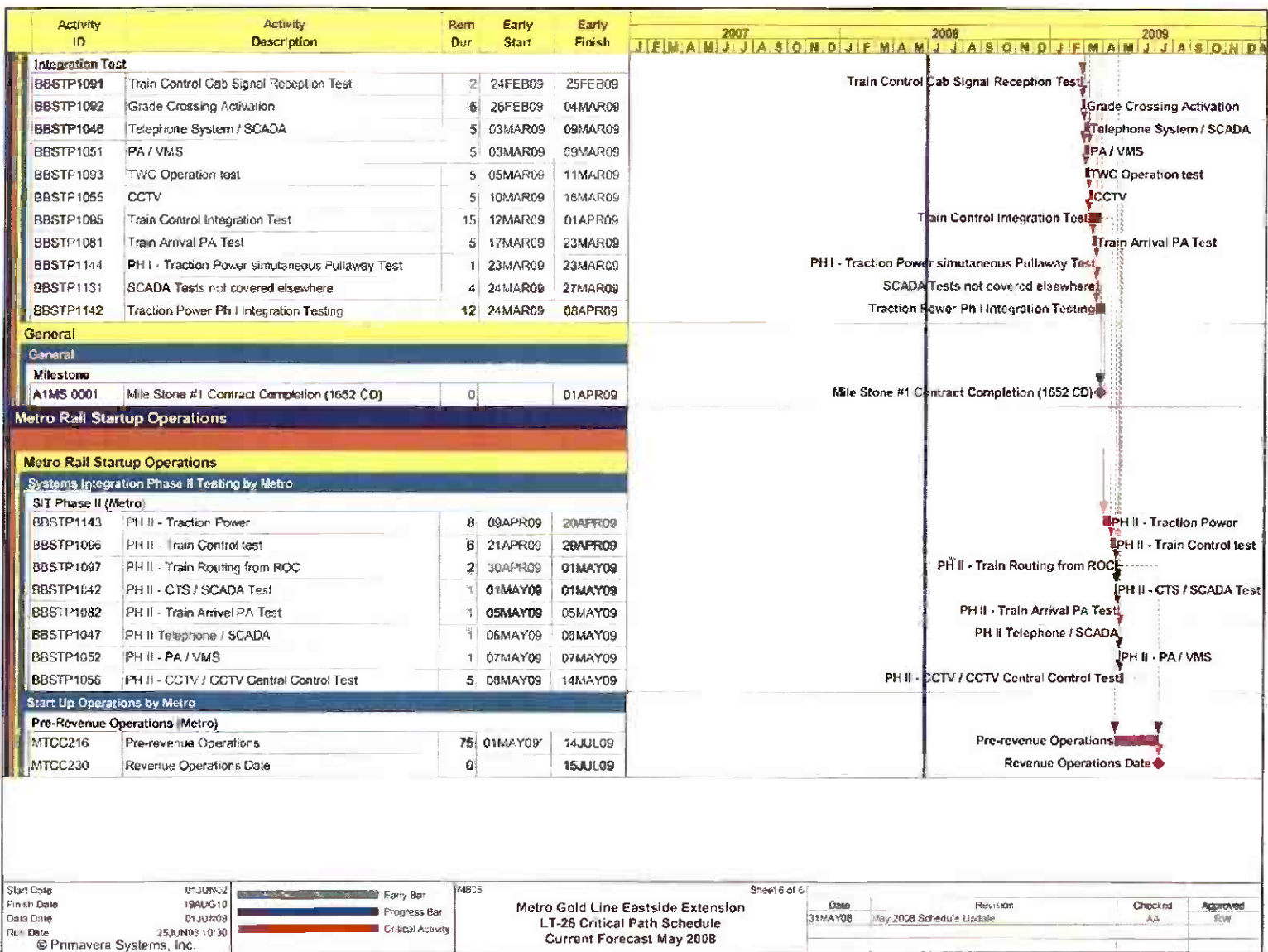
PROJECT MASTER SCHEDULE CRITICAL PATH (4 of 6)



PROJECT MASTER SCHEDULE CRITICAL PATH (5 of 6)



PROJECT MASTER SCHEDULE CRITICAL PATH (6 of 6)



CRITICAL PATH NARRATIVE

Current Critical Path Analysis

The C0803 contractor (ELRTC) is reporting to be on schedule to achieve substantial completion by April 1, 2009. Although the contractor has not officially received clearance from OSHA to weld rail in the tunnels, track plinth and rail installation in this critical area is proceeding per plan. ELRTC is developing a plan to minimize potential delays in the event the OSHA clearance does not arrive by the middle of June 2008.

There are two parallel critical paths in the current schedule. One is through track and OCS installation from Union Station to Segment 4B; the other is communications installation at the Soto and Pico/Aliso Stations. Local facilities testing are the last stage of the critical path prior to entering the final test stage, where systems integration testing and Pre-Revenue Operations are conducted.

PROJECT COST STATUS

COST REPORT BY ELEMENT ORIGINAL SCOPE ACTIVITIES DOLLARS IN THOUSANDS

ELEMENT	DESCRIPTION	ORIGINAL BUDGET	CURRENT BUDGET		COMMITMENTS		EXPENDITURES		CURRENT FORECAST		BUDGET / FORECAST VARIANCE
			PERIOD	TO DATE	PERIOD	TO DATE	PERIOD	TO DATE	PERIOD	TO DATE	
C	CONSTRUCTION	633,221	-	651,961	265	653,729	11,526	515,230	-	651,961	-
S	SPECIAL CONDITIONS	19,494	-	43,948	1,094	45,652	1,720	33,325	-	43,948	-
R	RIGHT-OF-WAY	40,358	-	42,299	-	43,004	-	42,288	-	42,299	-
P	PROFESSIONAL SERVICES	135,304	-	135,841	-	125,767	970	119,024	-	135,841	-
PC	PROJECT CONTINGENCY	60,254	-	14,599	-	-	-	-	-	14,599	-
PR	PROJECT REVENUE	(4,617)	-	(4,633)	-	-	-	(44)	-	(4,633)	-
	SUBTOTAL	884,014	-	884,014	1,359	868,153	14,216	709,823	-	884,014	-
PF	PROJECT FINANCE COST	14,800	-	14,800	(304)	3,864	(304)	3,864	-	14,800	-
	TOTAL	898,814	-	898,814	1,055	872,017	13,912	713,687	-	898,814	-

NOTE: EXPENDITURES ARE CUMULATIVE THROUGH APRIL 2008

PROJECT COST ANALYSIS

Original Budget

The Full Funding Grant Agreement (FFGA) was adopted June 1, 2004 in the amount of \$898.8 million. The Original Budget reflects the adopted FFGA.

Current Budget and Current Forecast

The Current Budget and Forecast remains the same at \$898.8 million.

Commitments

The Commitments increased by a total of \$1.1 million this period. In the Construction element there was an increase of \$0.3 million due to executed modifications associated with Contract C0803 – Tunnel, Stations, Trackwork and Systems. In the Special Conditions element there was an increase of \$1.1 million due to the Dry Utilities Shared Incentive Program. And in the Project Finance Cost element there was a decrease of \$0.3 million due to an interest income received. Interest earned is received monthly and interest payments are made semi-annually. Interest earnings are not projected to be more than the interest costs. The \$872.0 million in Commitments to date represents 97.0% of the Original Budget.

Expenditures

Expenditures are cumulative through April 2008. The Expenditures increased by a total of \$13.9 million this period. In the Construction element there was an increase of \$11.5 million primarily due to costs associated with Contract C0803 – Tunnel, Stations, Trackwork and Systems and universal fare system. In the Special Conditions element there was an increase of \$1.7 million primarily for costs associated with the 3rd Party Master Cooperative Agreements with the City of Los Angeles and the Dry Utilities Shared Incentive Program. In the Professional Services element there was an increase of \$1.0 million for costs associated with Metro Project Administration, Design Support During Construction and Construction Management services. And in the Project Finance Cost element there was a decrease of \$0.3 million due to an interest income received. The April 2008 invoice for Contract C0803 in the amount of \$7.3 million was posted in the Metro's Financial Information System (FIS) on May 16, 2008 and will be reflected in the next reporting period. The \$713.7 million in Expenditures to date represents 79.4% of the Original Budget.

PROJECT COST STATUS

COST REPORT BY ELEMENT CONCURRENT NON-FFGA PROJECT ACTIVITIES DOLLARS IN THOUSANDS

ELEMENT	DESCRIPTION	ORIGINAL BUDGET	CURRENT BUDGET		COMMITMENTS		EXPENDITURES		CURRENT FORECAST		BUDGET / FORECAST VARIANCE
			PERIOD	TO DATE	PERIOD	TO DATE	PERIOD	TO DATE	PERIOD	TO DATE	
C	CONSTRUCTION	18,000	-	41,174	-	35,360	1,011	18,187	-	41,174	-
S	SPECIAL CONDITIONS	-	-	2,719	640	2,535	475	1,631	-	2,719	-
R	RIGHT-OF-WAY	-	-	-	-	-	-	-	-	-	-
P	PROFESSIONAL SERVICES	-	-	2,280	-	1,393	98	586	-	2,280	-
PC	PROJECT CONTINGENCY	-	-	-	-	-	-	-	-	-	-
PR	PROJECT REVENUE	-	-	(4,087)	-	(4,655)	-	(279)	-	(4,087)	-
SUBTOTAL		18,000	-	42,086	640	34,633	1,584	20,125	-	42,086	-
PF	PROJECT FINANCE COST	-	-	-	-	-	-	-	-	-	-
TOTAL		18,000	-	42,086	640	34,633	1,584	20,125	-	42,086	-

NOTE: EXPENDITURES ARE CUMULATIVE THROUGH APRIL 2008

PROJECT COST ANALYSIS

Original Budget

The Metro Board adopted the Original Budget of \$18.0 million on March 24, 2005.

Current Budget and Current Forecast

The Current Budget and Forecast remain the same at \$42.1 million.

Commitments

The Commitments increased by \$0.6 million this period to reflect the Board approved action for the purchase of a re-interment site at Evergreen Cemetery and a contract with Felipe Bagues Mortuary, Inc. for the re-interment services. The \$34.6 million in Commitments to date represents 82.3% of the Current Budget.

Expenditures

Expenditures are cumulative through April 2008. The Expenditures increased by \$1.6 million this period primarily for costs associated with the traction power sectionalization, revision of TPSS #3 site plan, universal fare system, urban design elements, purchase of the re-interment site at Evergreen Cemetery, Metro Project Administration costs, and Design Support During Construction. The April 2008 invoice for Contract C0803 in the amount of \$0.6 million was posted in the Metro's Financial Information System (FIS) on May 16, 2008 and will be reflected in the next reporting period. The \$20.1 million in Expenditures to date represents 47.8% of the Current Budget.

FINANCIAL/GRANT STATUS – ORIGINAL SCOPE ACTIVITIES

MAY 2008									
STATUS OF FUNDS BY SOURCE									
SOURCE	(A)	(B)	(C)	(D)	(D/B)	(E)	(E/B)	(F)	(F/E)
	ORIGINAL BUDGET	TOTAL FUNDS ANTICIPATED	TOTAL FUNDS AVAILABLE	COMMITMENTS \$	%	EXPENDITURES \$	%	BILLED TO FUNDING SOURCE \$	%
FEDERAL - SECTION 5309 NEW START	\$490,700	\$490,700	\$255,193	\$474,863	97%	\$360,337	73% (1)	\$334,959	68%
FED - SECTION 5309 FIXED GUIDEWAY	\$23,100	\$12,000	\$12,000	\$12,000	100%	\$12,000	100%	\$12,000	100%
FEDERAL - CMAQ	\$10,300	\$10,300	\$10,276	\$10,276	100%	\$10,276	100%	\$10,276	100%
REGIONAL IMPROVEMENT PROG - FED	\$179,600	\$4,600	\$4,600	\$4,600	100%	\$4,600	100%	\$4,600	100%
REGIONAL IMP PROG - STATE	\$0,600	\$175,600	\$131,796	\$175,600	100%	\$131,796	75%	\$131,796	75%
STATE TCPRP	\$45,000	\$45,000	\$45,000	\$45,000	100%	\$45,000	100%	\$45,000	100%
PROP A 35% / PROP C 40%	\$124,614	\$135,714	\$135,714	\$135,714	100%	\$135,714	100%	\$135,714	100%
LEASE REVENUES	\$10,100	\$10,100	\$10,100	\$10,100	100%	\$10,100	100%	\$10,100	100%
ACCRUALS									
SUB-TOTAL	\$884,014	\$884,014	\$604,679	\$868,153	98%	\$709,823	80%	\$684,445	77%
PROP A / PROP C (INTEREST COST)	\$14,800	\$14,800	\$1,980	\$3,864	26%	\$3,864	26%	\$3,313	22%
TOTAL	\$898,814	\$898,814	\$606,659	\$872,017	97%	\$713,687	79%	\$687,758	77%

NOTE: EXPENDITURES ARE CUMULATIVE THROUGH APRIL 2008.
 (1) BILLED EXPENDITURES IN EXCESS OF FUNDS AVAILABILITY ARE TEMPORARILY FUNDED THROUGH BRIDGE FINANCING.

STATUS OF FUNDS ANTICIPATED

FEDERAL SECTION 5309 NEW STARTS: LACMTA has received an appropriation of \$237.9M through FY07. LACMTA submitted a grant application for \$78.4 M in March 2008. Approval is expected in June 2008.

RIP-STATE: LACMTA submitted an allocation request of \$43.8 to the CTC for consideration for their upcoming July 2008 meeting.

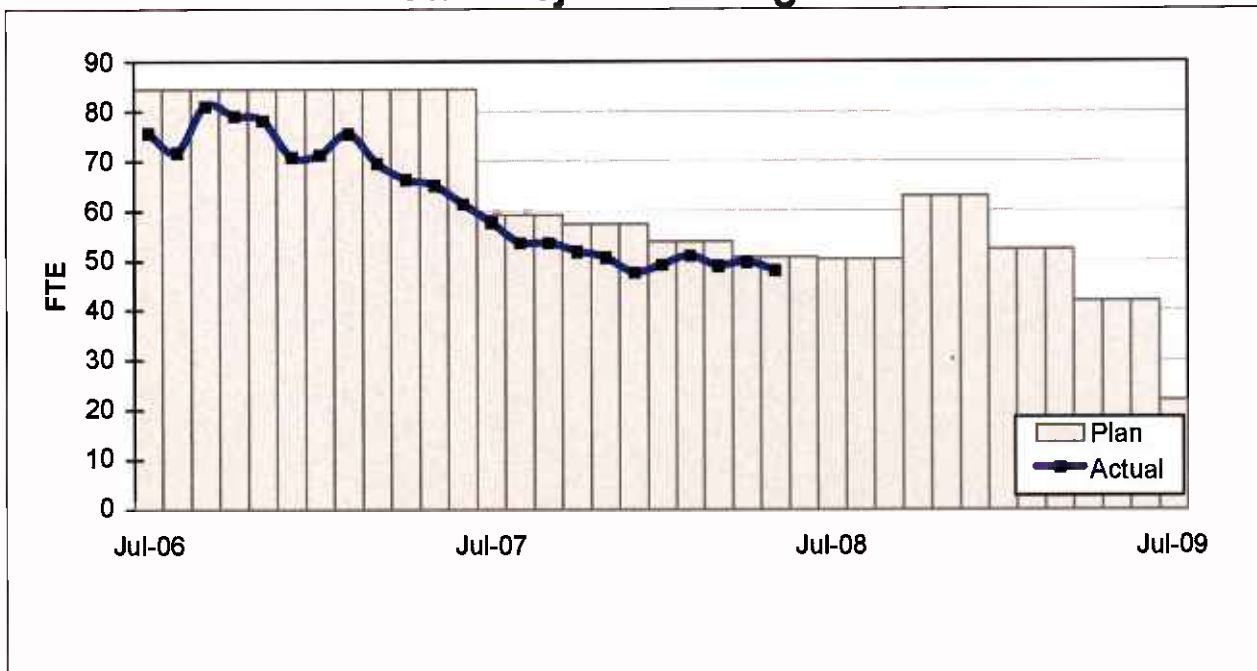
FINANCIAL/GRANT STATUS
CONCURRENT NON-FFGA PROJECT ACTIVITIES

MAY 2008		STATUS OF FUNDS BY SOURCE							
SOURCE	(A) APPROVED BUDGET	(B) TOTAL FUNDS ANTICIPATED (1)	(C) TOTAL FUNDS AVAILABLE	(D) COMMITMENTS \$	(D/B) %	(E) EXPENDITURES \$	(E/B) %	(F) BILLED TO FUNDING SOURCE \$	(F/B) %
PROP C 40%	\$14,000	\$14,000	\$14,000	\$14,000	100%	\$6,902	49%	\$5,038	36%
PROP C 10%	\$4,000	\$4,000	\$4,000						
STATE TCR	\$0,000	\$24,086	\$24,086	\$20,633	86%	\$13,223	55%	\$13,223	55%
TOTAL	\$18,000	\$42,086	\$42,086	\$34,633	82%	\$20,125	48%	\$18,261	43%

NOTE: EXPENDITURES ARE CUMULATIVE THROUGH APRIL 2008.

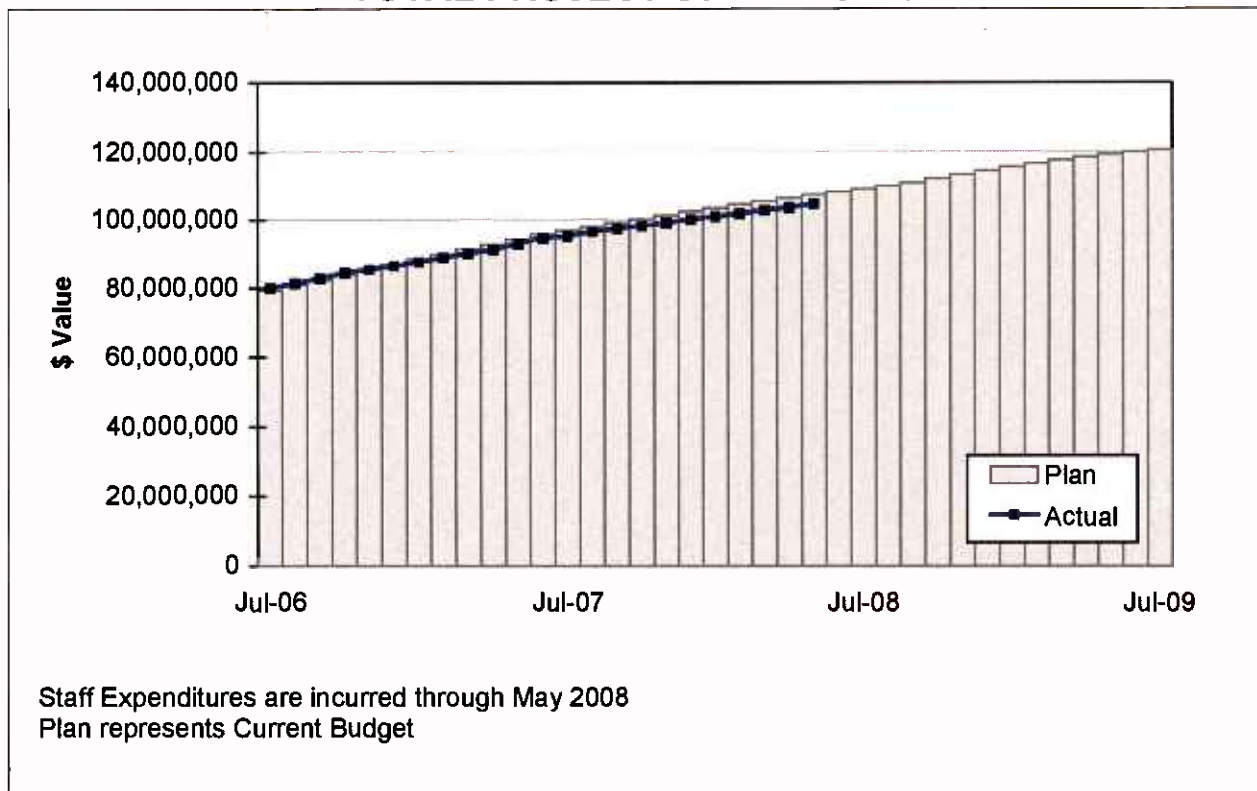
STAFFING STATUS

Total Project Staffing - FTES



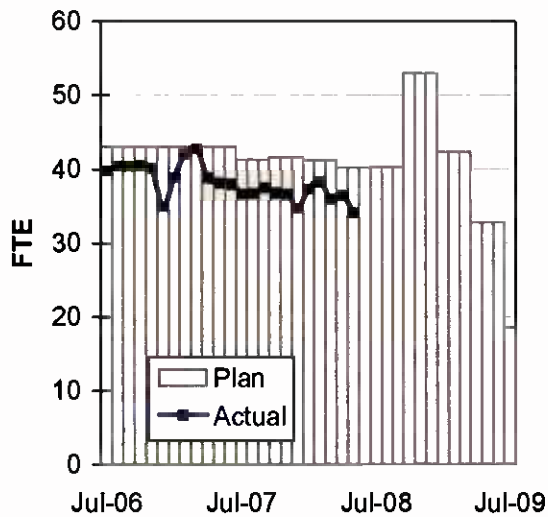
STAFFING STATUS

TOTAL PROJECT STAFFING COST

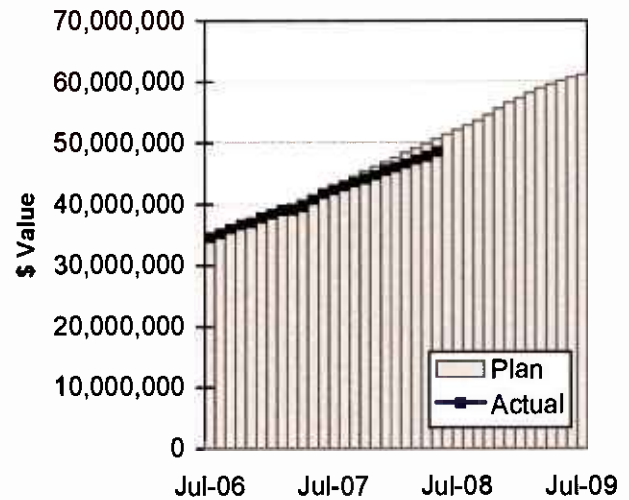


STAFFING STATUS

DIRECT AGENCY - FTES

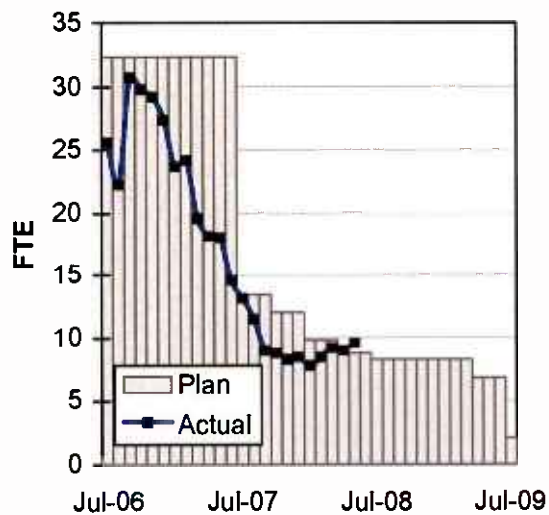


DIRECT AGENCY - COST

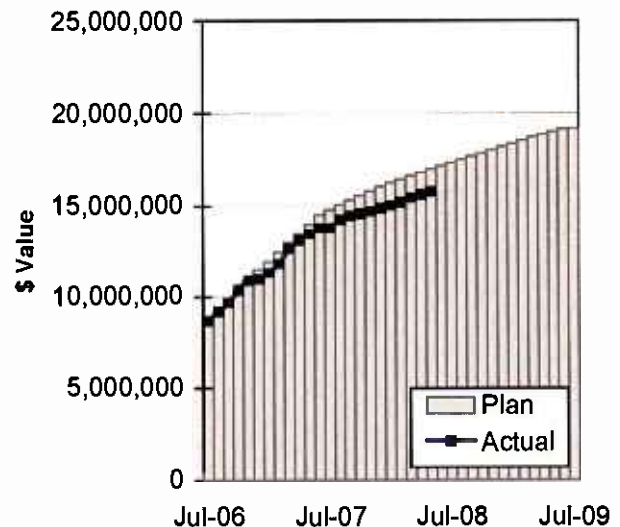


Staff Expenditures are incurred through May 2008
Plan represents Current Budget

CONSTRUCTION MGMT – FTES



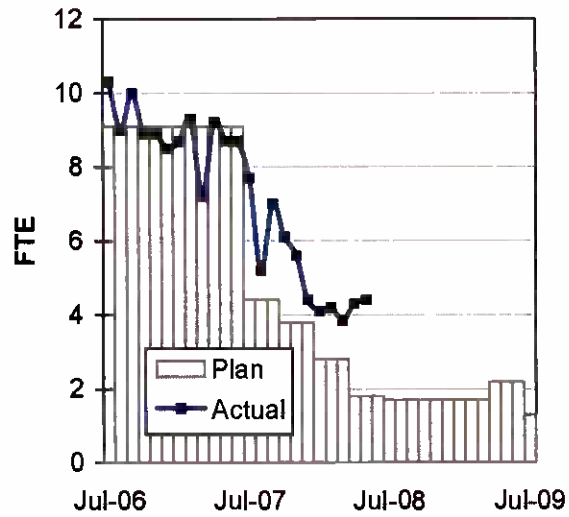
CONSTRUCTION MGMT - COST



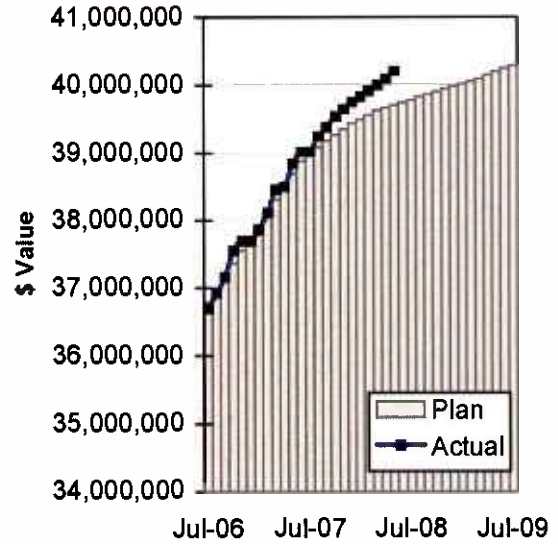
Staff Expenditures are incurred through May 2008
Plan represents Current Budget

STAFFING STATUS

ELRT PARTNERS - FTES



ELRT PARTNERS - COST



Staff Expenditures are incurred through May 2008
Plan represents Current Budget

REAL ESTATE STATUS

- For C0803, the tunnel portion of the alignment, 40 parcels were required for acquisition (11 full takes, 4 partial takes, 20 sub-surface easements/temporary construction easements, 3 sub-surface easements/building protection, and 2 building protections).
- For C0803, the at-grade portion of the alignment, 27 parcels were required for acquisition (17 full takes, 9 partial takes and 1 surface easement). Nine parcels were required for the LAUSD Ramona Opportunity High School site reconfiguration.
- For C0802, 2 parcels were required (1 surface easement and 1 full take parcel).
- Two Encroachment Permits were obtained from Caltrans for the C0803-Tunnel. Three street closures were obtained from the City of LA.

REAL ESTATE ACQUISITION SCHEDULE SUMMARY

<i>Number of Parcels</i>	Required	Acquired	On Schedule	Behind Schedule	
				Number	Avg. Calendar Days
This Period	69	69	0	0	0
Last Period	69	69	0	0	0

REAL ESTATE STATUS TO DATE BY CONTRACT ACQUISITION PHASE

CONTRACT NO.	Number of Parcels (A+B+C+D+E)	Agreements Signed (A)	Parcels in Condemnation (B)	Under Negotiation (C)	In Appraisal Process (D)	Inactive Parcels (E)	Parcels Available
C0803-Tunnel	40	40	0	0	0	0	40
C0803-At-Grade	27	27	0	0	0	0	27
C0802	2	2	0	0	0	0	2
TOTAL	69	69	0	0	0	0	69
LAST PERIOD	69	69	0	0	0	0	69

ENVIRONMENTAL STATUS

- Discussions continue with Cal State University Los Angeles to discuss proposed research projects on the remains and artifacts retrieved from the Los Angeles Crematorium site.
- Evergreen Cemetery is proceeding with the removal of the dirt stockpiles from the maintenance yard site adjacent to the reburial plots.
- Received a proposal from Cal State University Los Angeles containing thirteen research projects that could be completed on the human remains and artifacts recovered from the Los Angeles Crematorium site.
- Funding is being awarded to Archeo Paleo Associates to complete the curation of artifacts discovered along the alignment during excavation activities.

COMMUNITY RELATIONS STATUS

- Distributed thirteen Construction Notices which reached approximately 20,500 residences/businesses. Activities included deck removal for Phase III, canopy placement, concrete pours, track installation, street lighting installation and civil improvements.
- Met with one hundred eighty-nine residents/business owners to coordinate construction activities.
- Delivered four Open During Construction banners and thirty-six banners promoting the Project.
- Held monthly Executive Review Advisory Committee Meeting and Review Advisory Committee Meeting.
- Supported the 20th Annual Homeboy Industries Lo Maximo Awards Dinner, Roosevelt High School MESA Club, Sai Tan San Basketball Tournament in Little Tokyo, American Legion Post 804 and Hollenbeck Police Activities League.

QUALITY ASSURANCE STATUS

- Quality Management continues to review contractor's monthly Asphalt, Concrete Compressive Strength and Soils Compaction reports - areas of concern are coordinated to resolution with the onsite lab representative.
- The results of field surveillance activities continue to be identified in Weekly Surveillance Reports including color digital pictures identifying sites of surveillance and issues of concern.
- Mainline Ductbank damage caused by follow-on concrete forming work was addressed by the contractor in a nonconformance report. Metro is reviewing the corrective action to be taken.

SAFETY STATUS

- Participated in weekly progress meetings with Construction Managers and ELRTC management personnel to discuss safety related issues and construction schedule.
- Participated in Contractor Readiness Review Meetings and Rail Activation Meetings.
- Monitored construction activities on a daily basis, including weekends, to ensure contractor compliance with Contract Specification.
- ELRTC and their subcontractors reported one recordable incidents and 97,282 work hours for the month of May 2008. A total of thirty-eight (39) recordable incidents have occurred Project to Date. Total Project to Date work hours are 3,155,199. Injury Rates for Recordable incidents are 2.4; well below the published incident rate of 5.3.

ART DEVELOPMENT STATUS

- Coordination meetings with Metro Construction and ELRTC for artwork fabrication/installation schedules for eight stations.

THIRD PARTY AGREEMENT STATUS

Third Party	Type of Agreement	Forecast Execution Date	Required Need Date	Status/ Comments
City of Los Angeles	Amendment	Completed	N/A	Executed December 2002.
Los Angeles County	Master	Completed	N/A	Executed April 2003.
Caltrans (All Projects)	Master	Completed	N/A	Executed July 2003.
Caltrans (101)	Design	Completed	N/A	Executed July 2003.
Caltrans (101)	Construction	Completed	N/A	Executed September 2003.
Caltrans (101)	Maintenance	12/08	Project Completion	The initial negotiation meeting was held on 1/9/03. LACMTA received a draft from Caltrans on 1/22/04. LACMTA reviewed and submitted the agreement to Caltrans on 2/10/04. A follow up call was made on 10/20/05 but no response to date.
LADWP (Water/Power)	Amendment	6/08	*6/04	LACMTA Management, County Counsel, and LACMTA Board staff have participated in meetings with DWP to complete negotiations, since the "Deadline and Delay" clause is not acceptable to LADWP. Alternative language was forwarded to LACMTA Management and County Counsel for review on 10/7/05. LACMTA CEO is to speak with LADWP CEO.
So. Cal. Edison Co.	Amendment	N/A	N/A	SCE Executive Legal Branch stated on 2/25/05 they have no intention of signing agreement.
The Gas Company	Amendment	Completed	N/A	Executed May 2005.
SBC/AT & T	Amendment	Completed	N/A	Executed May 2005. SBC has been acquired by AT&T and has formed a new corporation TCM for work in Southern California. A new agreement has been negotiated with Metro and TCM, which was approved by the Metro Board in April. The new agreement mirrors the SBC agreement except for some minor changes in the insurance language.
Adelphia Cable Company	Amendment	6/08	*6/04	LACMTA received a draft from Adelphia for review. LACMTA Management and County Counsel reviewed the amendment and returned the document to Adelphia with comments. Adelphia's Legal Department is reviewing the document and follow-up calls were made on 10/20/05 and 11/16/05.
Calif Wtr Service Co	Master	Completed	N/A	Executed May 2005.
L.A. County Sanitation Districts	N/A	N/A	N/A	In a letter dated 3/26/03, the Sanitation District stated that there is not a need for an agreement since there are no relocations related to their facilities. The Sanitation District will review submittals related to encasements of their facilities on Indiana Street.
MCI Worldcom	Amendment	Completed	N/A	Executed May 2005.
Metropolitan Wtr Dist	Amendment	Completed	N/A	Executed May 2003.

THIRD PARTY AGREEMENT STATUS

Third Party	Type of Agreement	Forecast Execution Date	Required Need Date	Status/ Comments
Verizon Wireless	Amendment	6/08	*6/04	The revised draft amendment was hand delivered to Verizon on 11/19/03 and an electronic copy was sent to them 2/19/04. Verizon did respond with comments, which were reflected in a revised agreement sent 4/05. Verizon legal is completing final review. Follow up calls were made on 10/20/05 and 11/16/05. Verizon has now joined MCI and once the legal work is complete in late February 2006, LACMTA may be able to use the MCI Agreement for Verizon work. E-mailed MCI Agreement to Verizon Representative for consideration as overall agreement covering Verizon and MCI as the new Verizon.
GST	N/A			Facilities are not impacted by Eastside Construction
Exxon Mobil Oil Company	N/A			Facilities are not impacted by Eastside Construction
Pacific Pipeline Company	N/A			Facilities are not impacted by Eastside Construction
Kinder Morgan Pipeline Company	N/A			Facilities are not impacted by Eastside Construction
Tosco Refining Company	N/A			Facilities are not impacted by Eastside Construction
Equilon Pipeline Company	N/A			Facilities are not impacted by Eastside Construction
Level 3 Communications	N/A			Facilities are not impacted by Eastside Construction
Broadwing Communications	N/A			Facilities are not impacted by Eastside Construction
Eller Media	N/A			Facilities are not impacted by Eastside Construction

* Work will be performed under the current MCA and will not delay ongoing work.

CPUC CROSSING SUMMARY

Batch	Application Status	Initial Package Submittal to MTA	Field Diagnostic Meeting	Revised Drawings Due to MTA	Draft Write-up to MTA	Draft Package Submittal to PUC Local office and Agencies	Final Package Submittal to PUC	CPUC Final Approval
1	Complete	8/5/02	8/12/02	8/26/02	9/6/02	9/6/02	9/6/2002	Approved
2	Complete	10/4/02	10/11/02	10/25/02	11/6/02	11/22/02	11/22/2002	Approved
3	Complete	2/6/03	2/27/03	3/10/03	1/27/03	4/11/02	4/18/2003	Approved
4	Complete	12/14/02	1/15/03	1/29/03	11/13/02	5/5/03	6/18/2003	Approved
4A	Complete	1/24/03	1/29/03	3/14/03	2/7/03	9/5/03	1/23/2004	Approved
6	Complete	3/19/03	3/26/03	6/20/03	2/7/03	9/5/03	9/12/2003	Approved
7	Complete	12/11/02	12/18/02	3/31/03	2/7/03	5/5/03	7/25/2003	Approved
8	Complete	11/26/02	12/18/02	3/31/03	11/15/02	6/6/03	5/21/2004	Approved
9	Complete	1/20/03	1/29/03	3/31/03	11/22/02	8/29/03	9/12/2003	Approved
10	Complete	12/11/03	12/18/02	3/10/03	11/22/02	5/5/03	8/29/2003	Approved
11	Complete	2/13/03	2/27/03	4/18/03	12/8/02	6/6/03	8/29/2003	Approved
12	Complete	2/13/03	2/27/03	4/18/03	12/13/02	6/6/03	9/5/2003	Approved
13	Complete	2/8/03	2/20/03	4/18/03	2/21/03	6/6/03	9/1/2004	Approved
14	Complete	1/8/03	1/15/03	3/14/03	11/12/02	8/29/03	10/30/2003	Approved
15	Complete	2/26/03	N/A	N/A	2/21/03	6/6/03	8/29/2003	Approved
16	Complete	2/26/03	N/A	N/A	2/28/03	6/6/03	8/29/2003	Approved
17	Complete	1/8/03	1/15/03	N/A	2/14/03	5/5/03	6/13/2003	Approved
18	Complete	1/8/03	1/15/03	3/20/03	2/14/03	5/5/03	6/13/2003	Approved
Agency Responsible		ELRTP	MTA	ELRP	ELRTP	MTA	MTA	

Batch No. 5 has been removed, as the Midway Yard will be utilized.

SHADED AREAS REPRESENTS COMPLETION

All applications are approved.

Batch Descriptions	
1 1st / Alameda	10 3rd / Ford
2 Alameda / Temple	3rd / McDonnell
1st / Hewitt	3rd / Arizona
Ped Crossings @ 1st / Alameda Station	11 3rd / Mednik
3 1st / Vignes	3rd / Civic Center Drive
4 1st / Lorena	3rd / La Verne
4A Indiana/1st	12 3rd / Driveways to Sheriff's Station
Indiana/3rd	3rd / Wood / Via Corona / Pomona / Beverly
Indiana Pedestrian Crossing	13 3rd / 60 Fwy WB Connector
6 1st / Mission	3rd / 60 Fwy over ELRT
1st / Anderson	3rd / 710 Fwy SW Connector
1st / Clarence	3rd / Bridge over 710 Fwy
1st / Utah	3rd / 710 Fwy SE Connector
1st/Gless Pedestrian Crossing	14 Union Station Service Road
7 3rd / Rowan	15 1st / Santa Fe
8 3rd / Gage	1st / Myers
3rd / 60 Fwy WB Ramps	16 1st / MTA
3rd /Downey	1st / BNSF
	1st / Union Pacific

CONTRACT C0802 STATUS

Description: 101 Freeway Bridge Overcrossing Contractor: Brutoco Engineering & Construction		Contract No. C0802 Status as of: May 30, 2008																													
Progress/Work Completed: <ul style="list-style-type: none"> * Bridge work was completed in March 2007 * Plant Maintenance period achieved November 2007 Areas of Concern: <ul style="list-style-type: none"> * None 		Major Activities (In Progress): <ul style="list-style-type: none"> * None Major Activities Next Period: <ul style="list-style-type: none"> * None 																													
Schedule Summary: Date of Award: 09/07/04 Notice to Proceed: 09/22/04 Original Contract Duration: 700 CD Current Contract Duration: 775 CD Elapsed Time from NTP: 904 CD * * Note: Elapsed time to Milestone # 1 completion		<table border="1" style="width: 100%; border-collapse: collapse;"> <thead> <tr> <th></th> <th style="text-align: center;">Original Contract Dates</th> <th style="text-align: center;">Time Extension</th> <th style="text-align: center;">Current Contract</th> <th style="text-align: center;">Forecast</th> <th style="text-align: center;">Variance CDs</th> </tr> </thead> <tbody> <tr> <td>Notice to Proceed</td> <td style="text-align: center;">09/22/04</td> <td style="text-align: center;">0</td> <td style="text-align: center;">09/22/04</td> <td style="text-align: center;">09/22/04</td> <td style="text-align: center;">0</td> </tr> <tr> <td>Milestone 1 - Complete Abutment No. 10</td> <td style="text-align: center;">08/26/06</td> <td style="text-align: center;">49</td> <td style="text-align: center;">08/14/06</td> <td style="text-align: center;">03/15/07</td> <td style="text-align: center;">-213</td> </tr> <tr> <td>Milestone 2- Complete All Work Without Plant Establishment</td> <td style="text-align: center;">08/23/06</td> <td style="text-align: center;">75</td> <td style="text-align: center;">11/06/06</td> <td style="text-align: center;">08/06/07</td> <td style="text-align: center;">-273</td> </tr> </tbody> </table>							Original Contract Dates	Time Extension	Current Contract	Forecast	Variance CDs	Notice to Proceed	09/22/04	0	09/22/04	09/22/04	0	Milestone 1 - Complete Abutment No. 10	08/26/06	49	08/14/06	03/15/07	-213	Milestone 2- Complete All Work Without Plant Establishment	08/23/06	75	11/06/06	08/06/07	-273
	Original Contract Dates	Time Extension	Current Contract	Forecast	Variance CDs																										
Notice to Proceed	09/22/04	0	09/22/04	09/22/04	0																										
Milestone 1 - Complete Abutment No. 10	08/26/06	49	08/14/06	03/15/07	-213																										
Milestone 2- Complete All Work Without Plant Establishment	08/23/06	75	11/06/06	08/06/07	-273																										
Physical Percent Complete: Physical completion ** as of this reporting period is: 100.00% ** Note: Physical completion assessment reflects work completed and invoice amount shown in Caltrans Monthly Progress/Expense Report No. 30.		Cost Summary: \$ In millions <table style="width: 100%;"> <tr> <td>1. Award Value:</td> <td style="text-align: right;">6.42</td> </tr> <tr> <td>2. Executed Modifications:</td> <td style="text-align: right;">0.00</td> </tr> <tr> <td>3. Approved Change Orders:</td> <td style="text-align: right;">0.00</td> </tr> <tr> <td>4. Current Contract Value (1+2+3):</td> <td style="text-align: right;">6.42</td> </tr> <tr> <td>5. Incurred Cost:</td> <td style="text-align: right;">6.42</td> </tr> </table>						1. Award Value:	6.42	2. Executed Modifications:	0.00	3. Approved Change Orders:	0.00	4. Current Contract Value (1+2+3):	6.42	5. Incurred Cost:	6.42														
1. Award Value:	6.42																														
2. Executed Modifications:	0.00																														
3. Approved Change Orders:	0.00																														
4. Current Contract Value (1+2+3):	6.42																														
5. Incurred Cost:	6.42																														

CONTRACT C0803 STATUS

Description: Tunnel, Stations, Trackwork & Systems Contractor: Eastside LRT Constructors	Contract No. C0803 Status as of: May 30, 2008																																									
Progress/Work Completed: <ul style="list-style-type: none">* Poured Mariachi Plaza Station (MPS) entrance upper exterior walls and completed CMU walls at the station entrance mezzanine* Completed street restoration at 1st Street and Boyle intersection* Installed light pendant supports (platf.) and acoustic finish at MPS* MPS Aux. Switch Gear underground conduit and grounding grid* Poured one half of the Soto Station (SS) entrance roof slab, mezz. entrance interior walls and emergency exit # 2 upper walls* Erected mezzanine rooms CMU walls at the west end of the SS* Install underground conduit and electric vaults at SS TPS-02* Installed iron picket fence on top of the West Portal street barrier* Poured stair # 1 at East Portal mezzanine to track level* Poured MSE wall coping south of the US 101 Bridge Overcross.* Poured Baggage Handling Road surface concrete - west side* Poured cross-over rail track support slab at 1st Street & Utah St.* Installed underground conduit and electric vaults at TPS-03* Completed 1st Street/Indiana intersect. street improvements-south* Installed curved track at 1st Street/Indiana St. intersection and specialized rail track sections at the Ditman St. crossover* Completed OCS pole foundations and ductbank in Segment 5* Installed Train Control interlocking devices along Segment 6 Areas of Concern: <p>Metro approved the rebaseline schedule, which incorporates significant subcontractor coordination for the remaining work while optimizing utilization of resources. The current forecast does not impact the FFQA ROD.</p>	Major Activities (In Progress): <ul style="list-style-type: none">* Entrance upper exterior walls at Mariachi Plaza Station* Placement of acoustical material at MPS mezzanine* Install mechanical/electrical equipment at Mariachi Plaza Station* Soto Station entrance roof and emergency exit # 2 roof* Install CMU walls, fire protection pipe and acoustic finish at SS* Install mechanical/electrical equipment at Soto Station* Install exhaust vent shaft structure and cable tray at E. Portal* Construct track at West Portal and Mariachi Plaza Station* Fab. underground stations emerg. fans, escalators & elevators* Civil construction at Indiana and Pico/Aliso stations* Place cabinets and junction boxes in A/G stations TC&C rooms* Track installation on US 101 Bridge Overcrossing and in tunnels* Segments 2B, 4B and 5 guideway/track construction* Pull AC and DC wire along Segments 6 and 7* String OCS wire and place "C" arms in Segment 5* Train Control equipment installation - Segments 1, 4B, 5 and 6 Major Activities Next Period: <ul style="list-style-type: none">* Mariachi Plaza Sta. entrance roof slab* Mechanical and electrical installation-Mariachi Plaza & Soto Sta.* Soto Station entrance exterior walls and roof slab* Soto Station platform deck and CMU walls at mezz. level* East Portal complete F.A.I. and exhaust concrete structure* Complete track installation throughout the alignment* Indiana Station canopy erection* TC&C rooms equipment installation throughout all stations* TPS-01, 02 and 03 and Ancillary Switch Gear construction* OCS equipment and wire installation-Segments 2B, 3, 4A and 4B* Install Train Control and Communications throughout the project																																									
Schedule Summary: Date of Award: 06/01/04 Notice to Proceed: 07/01/04 Original Contract Duration: 1795 CD Current Contract Duration: 1800 CD Elapsed Time from NTP: 1430 CD Option D Contract duration 90 CD Complete	<table><tr><td></td><td>Original Contract Dates</td><td>Time Extension</td><td>Current Contract</td><td>Forecast</td><td>Variance CDs</td></tr><tr><td>Notice to Proceed</td><td>07/01/04</td><td>0</td><td>07/01/04</td><td>07/01/04</td><td>0</td></tr><tr><td>Milestone 1 - Contract Completion. Complete all systems integration testing and ready for MTA's pre-revenue operation testing.</td><td>12/31/08</td><td>9</td><td>01/09/09</td><td>04/01/09</td><td>-82</td></tr><tr><td>Milestone 3 - Complete Universal Fare System Equipment area.</td><td>04/30/08</td><td>5</td><td>05/05/08</td><td>01/05/09</td><td>-245</td></tr><tr><td>Milestone 5 - Vacate all staging areas and turn over to MTA.</td><td>05/30/09</td><td>5</td><td>06/04/09</td><td>08/25/09</td><td>-82</td></tr><tr><td>Milestone 6 - Complete design and construction of Option D work.</td><td>09/28/04</td><td>0</td><td>09/28/04</td><td>09/28/04</td><td>0</td></tr></table>							Original Contract Dates	Time Extension	Current Contract	Forecast	Variance CDs	Notice to Proceed	07/01/04	0	07/01/04	07/01/04	0	Milestone 1 - Contract Completion. Complete all systems integration testing and ready for MTA's pre-revenue operation testing.	12/31/08	9	01/09/09	04/01/09	-82	Milestone 3 - Complete Universal Fare System Equipment area.	04/30/08	5	05/05/08	01/05/09	-245	Milestone 5 - Vacate all staging areas and turn over to MTA.	05/30/09	5	06/04/09	08/25/09	-82	Milestone 6 - Complete design and construction of Option D work.	09/28/04	0	09/28/04	09/28/04	0
	Original Contract Dates	Time Extension	Current Contract	Forecast	Variance CDs																																					
Notice to Proceed	07/01/04	0	07/01/04	07/01/04	0																																					
Milestone 1 - Contract Completion. Complete all systems integration testing and ready for MTA's pre-revenue operation testing.	12/31/08	9	01/09/09	04/01/09	-82																																					
Milestone 3 - Complete Universal Fare System Equipment area.	04/30/08	5	05/05/08	01/05/09	-245																																					
Milestone 5 - Vacate all staging areas and turn over to MTA.	05/30/09	5	06/04/09	08/25/09	-82																																					
Milestone 6 - Complete design and construction of Option D work.	09/28/04	0	09/28/04	09/28/04	0																																					
Physical Percent Complete: Physical completion * as of this reporting period is: 79.87% * Note: Physical completion assessment reflects work completed and work in progress.	Cost Summary: \$ In millions <table><tr><td>1. Award Value:</td><td>600.45</td></tr><tr><td>2. Executed Modifications:</td><td>10.64</td></tr><tr><td>3. Approved Change Orders:</td><td>0.80</td></tr><tr><td>4. Current Contract Value (1+2+3):</td><td>611.89</td></tr><tr><td>5. Incurred Cost:</td><td>508.36</td></tr></table>						1. Award Value:	600.45	2. Executed Modifications:	10.64	3. Approved Change Orders:	0.80	4. Current Contract Value (1+2+3):	611.89	5. Incurred Cost:	508.36																										
1. Award Value:	600.45																																									
2. Executed Modifications:	10.64																																									
3. Approved Change Orders:	0.80																																									
4. Current Contract Value (1+2+3):	611.89																																									
5. Incurred Cost:	508.36																																									

CONTRACT E700051F STATUS

Description: 1st Street Bridge Strengthening Contractor: The Griffith Company		Contract No. E700051F Status as of: May 30, 2008					
Progress/Work Completed: * Bridge turned over to Metro on October 26, 2007		Major Activities (In Progress): * None					
Areas of Concern: * None		Major Activities Next Period: * None					
Schedule Summary: Date of Award: 01/19/07 Notice to Proceed: 02/06/07 Original Contract Duration: 251 CD Current Contract Duration: 281 CD Elapsed Time from NTP: 281 CD			Original Contract Dates	Time Extension	Current Contract	Forecast	Variance CDs
		Notice to Proceed	02/06/07	0	02/06/07	02/06/07	0
		Milestone 1 - Substantial Completion	10/15/07	30	11/14/07	11/14/07	0
Physical Percent Complete: Physical completion as of 11/14/07: 100.00% * * As reported by the City of Los Angeles, Department of Contract Administration		Cost Summary: \$ In millions 1. Award Value: * 4.26 2. Executed Modifications: 0.00 3. Approved Change Orders: 0.05 4. Current Contract Value (1+2+3): 4.31 5. Incurred Cost: 4.31 * City of Los Angeles					

CONTRACT P2550 STATUS

Description: 2550 Rail Vehicle Program Contractor: AnsaldoBreda, Italy (AB)		Contract No. P2550 Status as of: May 30, 2008			
Progress/Work Completed: 1. As of June 6, vehicles 711 and 712 have arrived at MGD Shop and are undergoing testing for acceptance by MTA. Vehicles 701 and 702 will be returned to Pittsburgh with the next shipment of vehicles from Pittsburg to Los Angeles. 2. Vehicle final assembly work continues in Pittsburg, CA. 3. Shipment of foreign and domestic parts for final assembly continue to arrive in Pittsburg, CA. 4. Vehicle shipment from Pittsburg to Los Angeles restarted with delivery of vehicle 711 on May 30th. Shipment of carshells from Italy to Pittsburg is ongoing. 5. Several Engineering meetings with AB have been held to evaluate progress and to close open items, including visits to Pittsburg Plant. 6. Vehicle 706 and 708 have been in operation on Metro Gold Line since March 2008. 7. Vehicle No. 710 and 704 are the next vehicles to be accepted. Areas of Concern: Since Vehicles 706 and 708 have been in revenue service, vehicles have experienced propulsion problems. AB Engineers have tested vehicles and interim corrective actions have been implemented.		Major Activities (In Progress): 1. AnsaldoBreda's manufacturing plants in Pistopia and Naples, Italy continue to prepare carshells and subassemblies for shipment to U.S.A.. Pittsburg plant continues vehicle assembly work. 2. Testing of Vehicles 710 & 704 is ongoing in Los Angeles for next vehicle acceptance. Pittsburg plant continues vehicle assembly work. 3. A four day Project Meeting in Los Angeles with AnsaldoBreda scheduled for May 6-9 has been held. Weekly project conference calls with Italy are ongoing to close open items. Major Activities Next Period: 1. Several Technical Progress meetings will be held to emphasize the urgency of resolution of remaining critical items for final acceptance of vehicles. 2. Cars 710 and 704 will continue final testing for Conditional Acceptance in June 2008. Vehicles 711 and 712 will be tested for acceptance. 3. AB to continue working propulsion issues and implement final corrective software and hardware.			
			Quantity	Contract Total Quantity	Balance Due
Schedule Summary: Date of Award: 04/24/03 Notice to Proceed: 06/06/03 Original Contract Duration: 1442 CD Elapsed Time from NTP: 1756 CD Note: Metro and AnsaldoBreda agreed to Mod No. 8 which extended the Options ordering period from April 2008 to October 2008, A schedule of vehicle delivery has been submitted by AB which reflects vehicle shipment with 50th (last) car by December 2009.		Notice to Proceed 6/6/2003A Vehicles Assembled 31 50 19 LRV Shipment to Commissioning Site - Note 2 11 50 39 LRV Accepted for Revenue Service by Note 1 2 50 48 LRV in Revenue Service 2 50 48 * Note 1 - Vehicles No. 706 and 708 were conditionally accepted for Metro Gold Line operation only.			
Physical Percent Complete: Percent of LRVs assembled = 31/50 = 62% Percent Work Product Invoiced through May 2008 is 47%		Cost Summary: \$ In millions 1. Award Value: Pasadena (Proj. No.: 800151) 126.99 Eastside Ext. (Proj. No.: 800088) 31.75 Total Award Value 158.74 2 Executed Modifications 0.00 3 Approved Change Orders: 0.00 4 Current Contract Value (1 + 2 + 3): 158.74 5 Payments or invoices in process: 74.53			

CONSTRUCTION PHOTOGRAPHS



Concrete placement for the WB track at the East Portal.



Pedestrian crosswalk at Pico/Aliso Station.

CONSTRUCTION PHOTOGRAPHS



Construction of Segment 2B track crossover.



View of TPS-1 equipment foundations.

CONSTRUCTION PHOTOGRAPHS



Street restoration at Boyle Heights/Mariachi Plaza Station.



Emergency exit at Soto Station.

CONSTRUCTION PHOTOGRAPHS



View of Train Control Room at Atlantic Station.

APPENDIX

COST AND BUDGET TERMINOLOGY

ESTIMATED PROJECT COSTS: Estimated project costs are based upon the current project cost estimates that are produced during the engineering design phase.

COMMITMENTS: The total of actual contract awards, executed change orders or amendments, approved work orders of Master Cooperative Agreements, offers accepted for purchase of real estate, and other LACMTA actions that will result in specific expenditures at a future time.

INCURRED COST: The total value of work performed to date of services received, and acquired materials or properties.

EXPENDITURES: The total dollar amount of checks written by the LACMTA's Accounting department for contractor or consultant invoices, third party invoices, staff salaries, and closing payments for escrow accounts that is reported in the LACMTA's Financial Information System (FIS).

CONSTRUCTION: Includes guideways, yards and shops, systems equipment, stations, and vehicles.

PROFESSIONAL SERVICES: Includes general engineering, construction management services, consultant design support services during construction, legal counsel, and agency (LACMTA staff) costs.

RIGHT-OF-WAY: Includes real estate appraisals, purchase cost of parcels, easements, right-of-entry permits, escrow fees, and tenant relocation.

UTILITY/AGENCY FORCE ACCOUNT: Includes work by outside agencies and utilities in design coordination and review.

CONTINGENCY: A fund established at the beginning of a project to provide for anticipated but unknown additional costs that may arise during the course of the project.

SPECIAL CONDITIONS: Includes utilities relocation, environmental compliance and mitigation, master cooperative agreements, insurance program, artwork, systems integration testing and pre-revenue operations.

APPENDIX
LIST OF ACRONYMS

AFE	Authorization For Expenditure
ATC	Automatic Train Control
CADD	Computer Aided Drafting and Design
CALTRANS	California Department of Transportation
CD	Calendar Day
CM	Construction Manager
CMAQ	Congestion Mitigation Air Quality
CN	Change Notice
CO	Change Order
CNFPA	Concurrent Non-FFGA Project Activities
CPM	Critical Path Method
CPUC	California Public Utilities Commission
CR	Camera Ready
CTC	California Transportation Commission
CUD	Contract Unit Description
DB	Design/Build
DBB	Design/Bid/Build
DD	Design Development
DOT	Department of Transportation
DWP	Department of Water and Power
EIR	Environmental Impact Report
EIS	Environmental Impact Statement
EPBM	Earth Pressure Balance Machine
ESP	Eastside LRT Partners
FAR	Federal Acquisition Regulation
FD	Final Design
FEIS	Final Environmental Impact Statement
FEIR	Final Environmental Impact Report
FFGA	Full Funding Grant Agreement
FIS	Financial Information System
FSEIR	Final Supplemental Environmental Impact Report
FSEIS	Final Supplemental Environmental Impact Statement
FTA	Federal Transit Administration
FTE	Full Time Equivalent
GDSR	Geotechnical Design Summary Report
IFB	Invitation for Bid
IPO	Integrated Project Office
JV	Joint Venture
LA	Los Angeles
LABOE	Los Angeles Bureau of Engineering
LACFCD	Los Angeles County Flood Control District
LACMTA	Los Angeles County Metropolitan Transportation Authority
LADOT	Los Angeles Department of Transportation

APPENDIX
LIST OF ACRONYMS (Continued)

LADPW	Los Angeles Department of Public Works
LADWP	Los Angeles Department of Water and Power
LAUSD	Los Angeles Unified School District
LNTP	Limited Notice To Proceed
LONP	Letter Of No Prejudice
LRT	Light Rail Transit
L RTP	Long Range Transportation Plan
LRV	Light Rail Vehicle
MIS	Major Investment Study
MPSR	Monthly Project Status Report
N/A	Not Applicable
NEPA	National Environmental Protection Act
NPDES	National Pollution Discharge Elimination System
NTE	Not to Exceed
NTP	Notice To Proceed
OCIP	Owner-Controlled Insurance Program
P3	Primavera Project Planner® (scheduling software)
PC	Project Control
PE	Preliminary Engineering
PEER	Permit Engineering Evaluation Report
PGL	Pasadena Gold Line
PIP	Project Implementation Plan
PM	Project Manager
PMA	Project Management Assistance
PMIP	Project Management Implementation Plan
PMOC	Project Management Oversight Consultant
PMP	Project Management Plan (manual)
P&P	Policies & Procedures
PR	Project Report
PSR	Project Study Report
QA	Quality Assurance
QAR	Quality Assurance Report
QC	Quality Control
QPSR	Quarterly Project Status Report
RAC	Review Advisory Committee
RAG	Rail Activation Group
RFC	Request For Change
RFP	Request For Proposal
ROD	Record Of Decision
ROD	Revenue Operations Date
ROM	Rough Order of Magnitude

**APPENDIX
LIST OF ACRONYMS (Continued)**

ROW	Right-Of-Way
SCAQMD	Southern California Air Quality Management District
SCE	Southern California Edison
SCRRA	Southern California Regional Rail Authority
SHA	State Highway Account
SHPO	State Historic Preservation Office
SIT	System Integration Testing
SOV	Schedule Of Value
SOW	Statement Of Work
SP	Special Provision
STIP	State Transportation Improvement Program
STP	Surface Transportation Program
TBD	To Be Determined
TBM	Tunnel Boring Machine
TCRP	Traffic Congestion Relief Program
TPSS	Traction Power Substation
TRACS	Transit Automatic Control System
UFS	Universal Fare System
USDOT	U.S. Department Of Transportation
VE	Value Engineering
WBS	Work Breakdown Structure
WP	Work Package