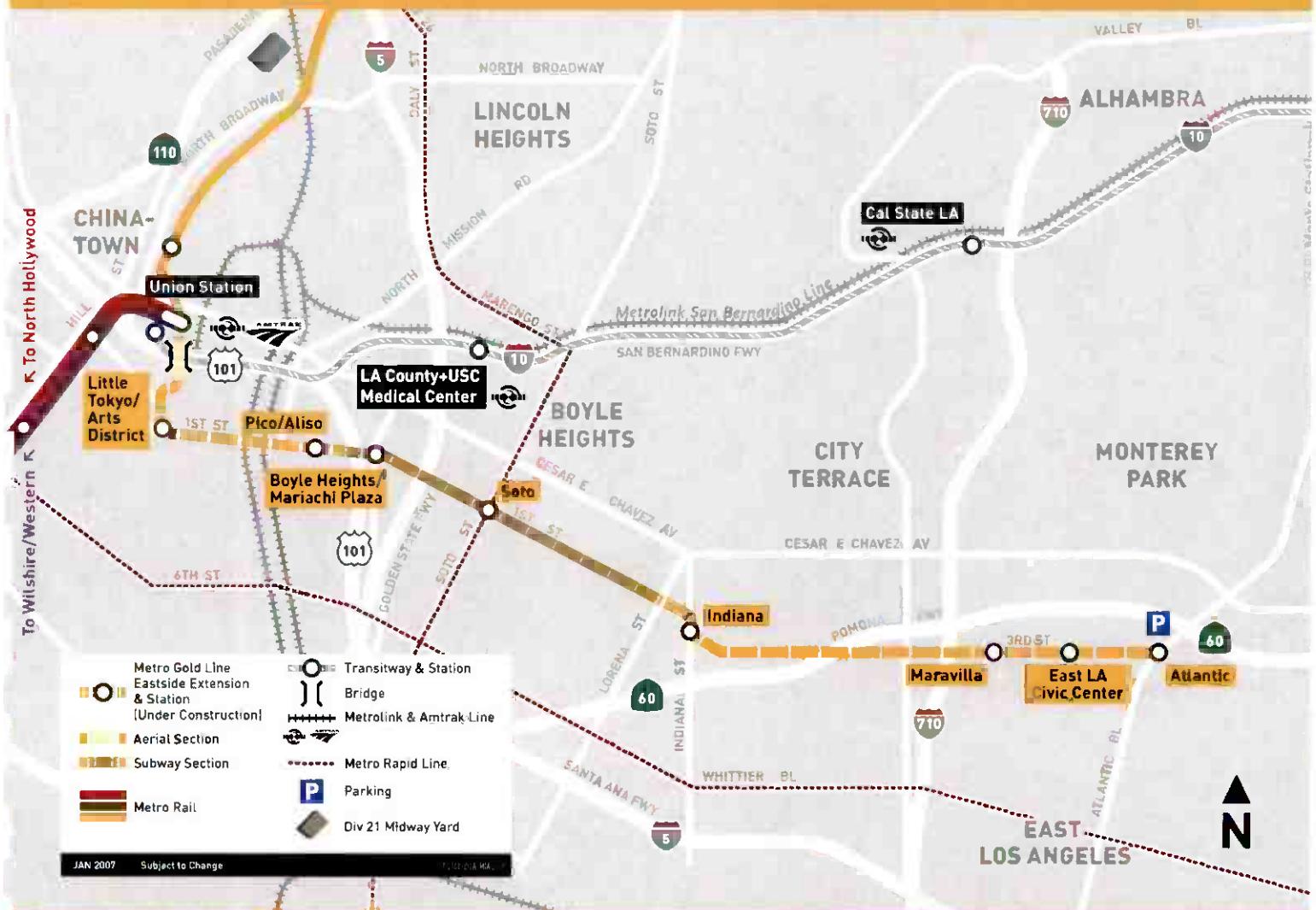


November 2008

Metro Gold Line Eastside Extension



Metro

METRO GOLD LINE EASTSIDE EXTENSION

MONTHLY PROJECT STATUS REPORT

THE PREPARATION OF THIS DOCUMENT HAS BEEN FINANCED IN PART THROUGH A GRANT FROM THE U. S. DEPARTMENT OF TRANSPORTATION, FEDERAL TRANSIT ADMINISTRATION (FTA), UNDER THE FEDERAL TRANSIT ACT OF 1964, AS AMENDED, AND FUNDS FROM THE STATE OF CALIFORNIA.

NOVEMBER 2008

TABLE OF CONTENTS

	Page No.
Project Overview & Status.....	1-3
Management Issues.....	4
Project Status	
• Project Scope.....	5
• Schedule	
○ Key Milestones Six-Month Lookahead	6
○ Project Master Schedule Critical Path.....	7-11
○ Critical Path Narrative.....	12
• Project Cost Status.....	13-14
• Financial/Grant Status.....	15-16
• Staffing.....	17-19
• Real Estate.....	20
• Environmental.....	21
• Community Relations.....	21
• Quality Assurance.....	22
• Safety.....	22
• Art Development.....	22
• Third Party.....	23-24
• CPUC Crossing.....	25
Contract C0802 Status	26
Contract C0803 Status	27
Contract E700051F Status.....	28
Contract P2550 Status	29
Construction Photographs	30-33
Appendices.....	34-37

PROJECT OVERVIEW & STATUS

The Metro Gold Line Eastside Extension Project is a six-mile, dual track light rail system with eight new stations and one station modification. The system originates at Union Station in downtown Los Angeles, where it connects with the Pasadena Gold Line, traveling generally east to Pomona and Atlantic Boulevards. The system will bridge State Route 101 Freeway and traverse the existing 1st Street Bridge over the Los Angeles River. The system will travel south on Alameda Street and then east on 1st Street with two stations at Alameda and Utah Streets. East of the Los Angeles River and 1st and Utah Streets, the alignment transitions to tunnel for approximately 1.7 miles, and continues beneath 1st Street to underground stations at 1st Street and Boyle Avenue and 1st Street and Soto Street. The alignment returns to the surface near the intersection of 1st Street and Lorena Streets, then jogs to the south, transitioning to follow 3rd Street with stations at Indiana Street, Ford Boulevard, Mednik Avenue and Pomona and Atlantic Boulevards.

Metro's consultant, ARINC, continued the software design phase for the expansion of the existing SCADA system per the approved baseline schedule. The design of the new hardware was completed this period and procurement of the hardware began, as well as preparation of the cutover plan. The software implementation phase will commence early in 2009 and is expected to be fully operational in time to support the project schedule for Phase II Systems Integration Testing. Phase II is Metro's responsibility.

Underground construction is proceeding per plan. The C0803 contractor performed the rail flaw detection tests and began rail grinding on both tracks. The systems subcontractor completed installation of OCS contact wire throughout the tunnels and began connecting the 34.5 KV feeders. Placement of Train Control (TC) impedance bonds within both tunnels was completed and installation of lighting wire and power cable to the cross passages continued this period. Equipment deliveries for the cross passages are continuing.

At the Boyle Heights/Mariachi Plaza Station, installation of elevators and escalators continued per schedule. Field crews completed fabrication of elevator frames on site and began installation of elevator # 2 frame and jack. Erection of escalators # 3 and 4 continued this period. Acoustical spray throughout the station was completed and installation of ceiling grid and panels continued at the platform and mezzanine levels. Installation of radiax cable and supports throughout the station continued, as well as tile installation at the mezzanine level. Mechanical and electrical equipment deliveries continued. Emergency fans were lowered through the emergency fan shaft # 1 and the MCC were lowered into the auxiliary power rooms. TC cabinets and panels were installed in the Train Control and Communication (TC&C) room. Construction crews poured pedestrian walkways around the Mariachi Plaza Kiosk and completed installation of lighting and landscaping in time for the annual Mariachi and Santa Cecilia festivals that were held in November 2008.

At the Soto Station, construction crews poured stair # 4 and elevator # 1 shaft walls. Placement of platform and mezzanine level ceiling grid and panels continued per schedule and at the mezzanine level, installation of the steel frame for wall sheet rock and tile began this period. Exposed conduit and lighting installation in the TC&C, emergency fans and auxiliary power rooms continued. The installation of fire protection pipe, HVAC ducts and cable tray was completed. Installation of TC cabinets, UPS racks and batteries were also completed. Escalator/elevator supplier crews continued assembly of escalators # 2 and 3 off site. Emergency fans and MCC equipment were delivered this period. The emergency fans

PROJECT OVERVIEW & STATUS

were lowered and mounted on concrete slabs in the emergency fan rooms. The mechanical subcontractor crews began attaching duct pieces to the emergency fans and welding damper frames at the track level. Also, at the Traction Power Substation 2 (TPS-02) site the CMU wall block placement continued and the radio antenna tower was erected.

At the West Portal (WP), field crews completed installation of OCS support beams, hangers and cantilevers and began placing messenger and contact wire. At the East Portal (EP), field crews completed installation of fire protection pipe, HVAC ducts and electrical cable tray at the TC&C, mechanical and auxiliary power rooms. Emergency fans and MCC equipment were delivered to the site.

At-grade construction is proceeding according to plan. At Union Station (US) and the 101 Freeway Bridge Overcrossing, field crews completed installation of OCS poles, hangers, supports and cantilevers and began pulling the messenger wire, as well as placing the 34.5 KV feeders. The iron picket fence was completed at the baggage handling road. Installation of TC signal and communication cables continued from US to the WP, as well as installation of TC impedance bonds.

Along Alameda Street (Segment 1), fabrication of the safety steel railing for the Mechanically Stabilized Earth wall began. Along 1st Street between Vignes Street and the West Portal (Segment 2B), field crews completed stringing OCS messenger and contact wire and connecting the 34.5 KV feeders. Rail grinding was performed along Segments 1 and 2. At the TPS-01 site under the 1st Street Bridge, the systems subcontractor continued working on the Department of Water and Power punch list prior to energizing the substation.

Guideway construction along 1st Street between Lorena and Indiana Streets in Segment 4A is nearing completion. Field crews completed street restoration at the intersection of 1st and Lorena Streets where curb and gutter and sidewalks were poured. At the TPS-03 site, at the intersection of 1st and Lorena Streets, equipment pre-testing began in preparation for commissioning next period. Street restoration on the west side of Indiana Street (Segment 4B) began with demolition of existing curb, gutter, sidewalk and driveways.

Construction along 3rd Street in Segment 5, between Ditman and Eastern Avenues, is also nearing completion. Field crews completed installation of pedestrian handrails and placed TC signals and signs at selected crossings. Final paving (grind/overlay) along 3rd Street continued per plan and final punch list work started. At the TPS-04 site, at the intersection of 3rd Street and Sunol Road, equipment pre-testing began in preparation for commissioning next period. Also, the 34.5 KV feeder cable from the substation to the overhead catenary was connected.

Between Mednik and Eastern Avenues (Segment 6), construction is also nearing completion. Construction crews completed final street paving and traffic signal installation. Installation of the pedestrian handrail was completed. Final punch list work continued per plan. At the TPS-05 site, Siemens, the substation manufacturer, performed final testing and commissioned the substation.

PROJECT OVERVIEW & STATUS

At the east end of the alignment along 3rd Street, between Atlantic Boulevard and Mednik Street (Segment 7), the final punch list work is progressing towards handing over control to Los Angeles County. At the TPS-06 site, on the northwest corner of Atlantic and Pomona Boulevards, the systems subcontractor continued working on the Southern California Edison punch list prior to energizing the substation.

In other areas of the alignment, at-grade station construction continues according to plan. At the Little Tokyo/Arts District and Pico/Aliso Stations, construction crews completed erection of the canopy steel frames and began applying a coat of primer in preparation for painting next period. Also, construction crews began installation of rebar and forms for the platform architectural colored concrete topping slab placement. At the Indiana Station, the platform colored concrete topping slab was poured and painting of canopy steel frames completed this period. The systems subcontractor began to terminate all wire connections in the TC&C room at the Maravilla and East Los Angeles Civic Center stations.

The fabrication and delivery of 50 light rail vehicles, Contract No. P2550 continues per the revised plan. Ten vehicles are required for the Metro Gold Line Eastside Extension Project. Fabrication of car assemblies is done at the contractor's plant in Italy and final assembly and testing is done at the contractor's facility in California. To date, a total of forty-two vehicles have been assembled and of those, five vehicles are going through the pre-acceptance process before entering the final inspection and commissioning phase. Two more vehicles are scheduled for delivery to Metro next period to begin conditional acceptance testing. To date, Metro has conditionally accepted eleven vehicles, which are running on the operating Metro Gold Line. This completes the project requirement of ten vehicles.

The Universal Fare System equipment is in storage at the vendor's facility until the equipment is required for installation. Metro staff has determined that in order to minimize the risk of equipment damage and vandalism, equipment installation will be deferred to the period of Pre-Revenue Operations. The vendor has requested a six to eight week notice prior to equipment delivery. This period, a vendor's subcontractor began preparation of wiring diagrams and cable schedules for the hook-ups.

The Metro Art Department continued providing technical support and coordination between the C0803 contractor and the artists responsible to provide art pieces for the eight stations. The artists continue developing shop drawings and material sampling with multiple fabricators and providing mounting details to the C0803 contractor. Fabrication of art pieces is well under way and shipments to the site of completed pieces continued per schedule. Metro and ELRTC are continuing with coordination meetings, where fabrication and installation issues are discussed.

The Metro Rail Activation Group completed the CPUC Safety Certification Plan and developed the Start-Up Track Allocation Plan. The group continued updating the M3 inventory system and began identifying Certificate of Occupancy requirements.

MANAGEMENT ISSUES

No Management Issues for the period ending November 2008.

PROJECT SCOPE

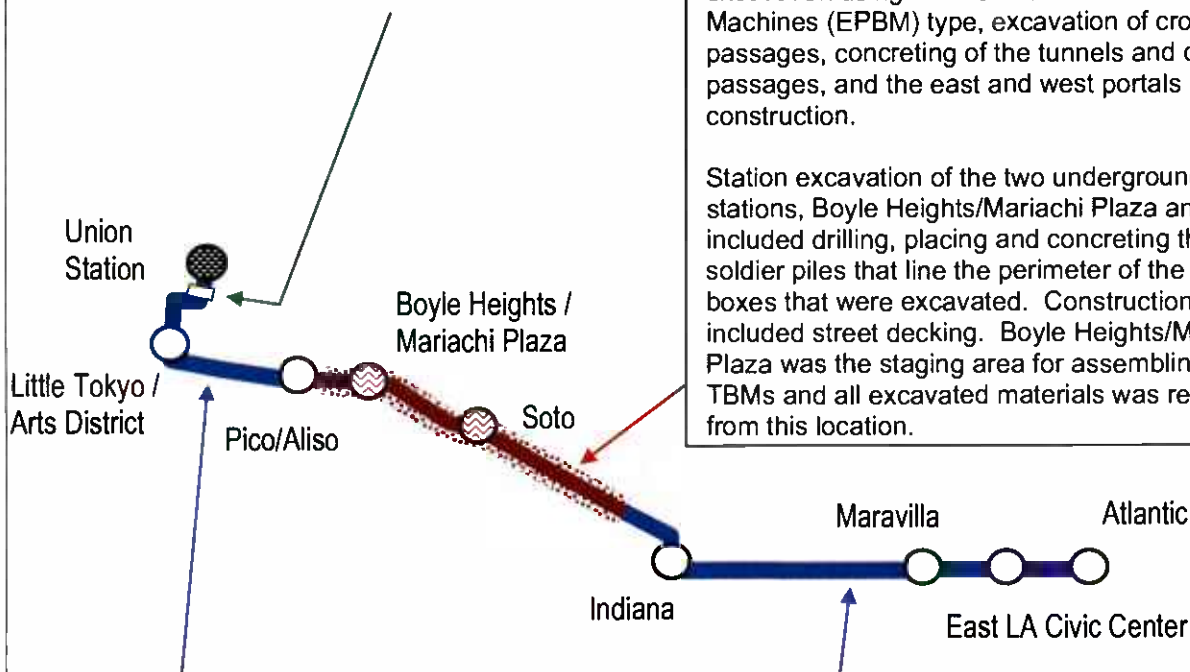
Contract C0802 – 101 Freeway Bridge

Overcrossing: The construction of the bridge was combined with Caltrans freeway improvements project. Caltrans administered the construction and the LACMTA provided oversight and was responsible for the construction costs of the bridge overcrossing.

Contract C0803 - Tunnel and Station

Excavation (Design/Bid/Build): Construction of the 1.7 mile tunnel segment included tunnel excavation using two Earth Pressure Balance Machines (EPBM) type, excavation of cross passages, concreting of the tunnels and cross passages, and the east and west portals construction.

Station excavation of the two underground stations, Boyle Heights/Mariachi Plaza and Soto, included drilling, placing and concreting the soldier piles that line the perimeter of the station boxes that were excavated. Construction also included street decking. Boyle Heights/Mariachi Plaza was the staging area for assembling the TBMs and all excavated materials was removed from this location.



Contract C0803 - Stations, Trackwork, and Systems (Design/Build): Construction of the two underground stations includes structural walls, station platforms, mezzanines, station entrances, and plazas, architectural finishes and all related mechanical and electrical work.

Construction of the six-mile alignment includes six at-grade stations, trackwork installation and testing for the entire alignment.

Systems installation and testing is inclusive of power systems, automatic train control, fire and emergency management, TRACS and communications systems. The contractor will be responsible for systems integration testing for the entire line segment prior to pre-revenue operations.

Metro Gold Line Eastside Extension
Monthly Project Status Report

November 2008

KEY MILESTONE SCHEDULE SIX-MONTH LOOKAHEAD

	Milestone Date	Nov-08	Dec-08	Jan-09	Feb-09	Mar-09	Apr-09
Begin Delivery of Motor Control Centers for Stations	11/10/08	○					
Began Landscaping Throughout the Alignment	11/12/08 *	○					
Completed Installation of Traction Power Substations	11/21/08	○					
Accepted the First 10 Breda Light Rail Vehicles	11/27/08	◆					
Implement 1st Street Bridge Oneway Traffic Control	12/03/08		○				
Complete Entrance Structure at Boyle Heights/Mariachi Plaza Station	12/03/08 *		○				
Complete Installation of Cable Transmission System	12/17/08 *		○				
Install Tunnel Portal Surveillance System	12/23/08 *		○				
Complete 34.5KV Feeder Cable Installation	12/23/08		○				
Complete CCS Installation Throughout the Alignment	12/29/08		○				
Complete Street Improvements Throughout the Alignment	12/30/08		○				
Start Systems Integration Testing Phase I (ELRTC)	01/13/09 *			○			
Complete Train Control Installation Throughout the Alignment	01/19/09			○			
Complete Radio System Installation	02/09/09 *				○		
Complete Systems Installation at the ROCC	02/12/09 *				○		
Complete At-Grade Stations Canopy Installation	02/25/09 *				○		
Complete First Station Construction - Little Tokyo/Arts District	02/27/09 *				○		
Complete Landscape at Both Portals	03/18/09 *				○		
Start Systems Integration Testing Phase II (Metro)	03/18/09 *					◆	
C0803 Contractor Achieve Substantial Completion	04/09/09						○
Install Universal Fare System Throughout the Alignment	04/30/09						◆



LAC MTA Staff Milestone



Eastside LRT Constructors

FTA

FTA Approval



Other Agencies

*

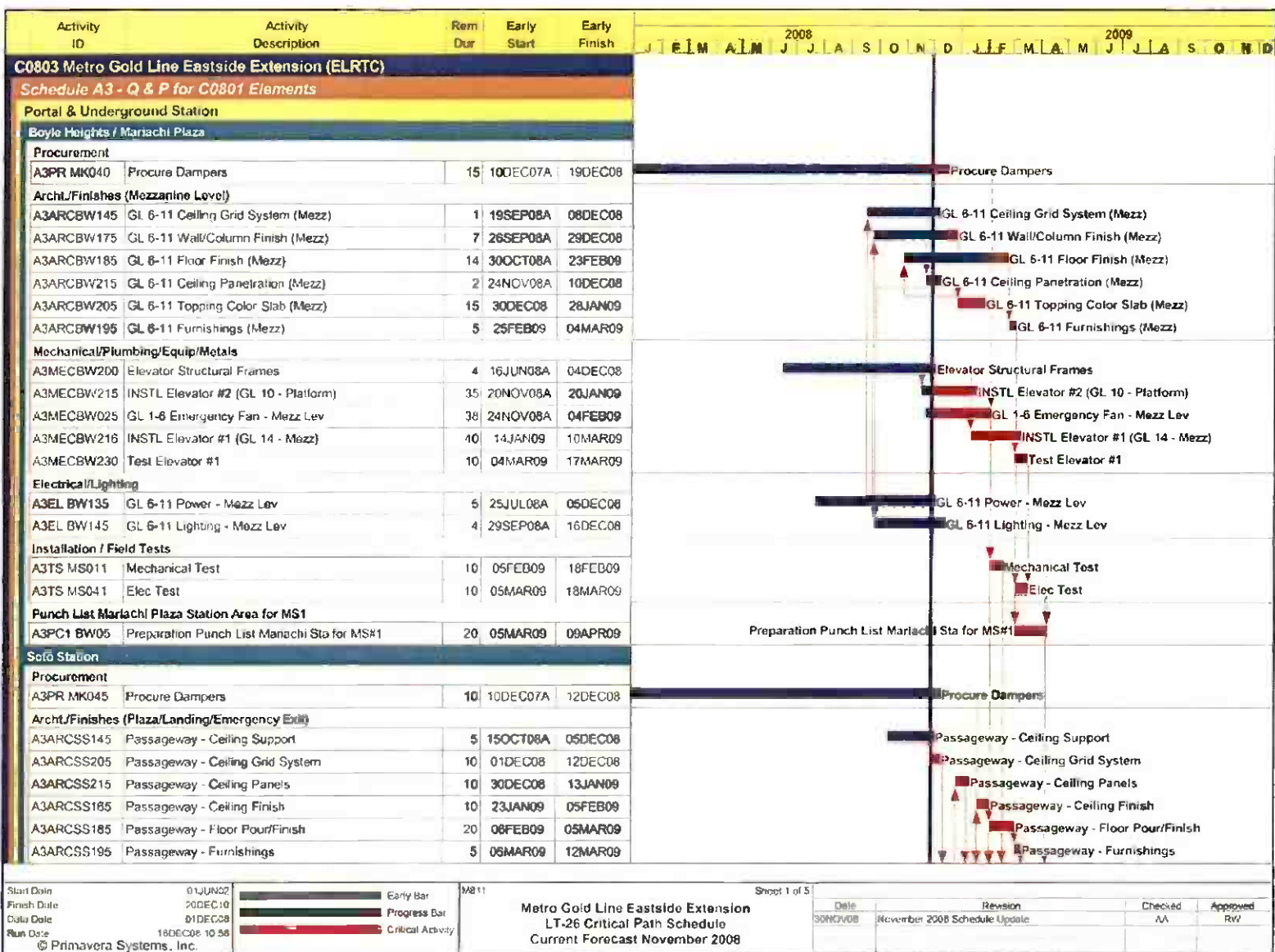
New Date



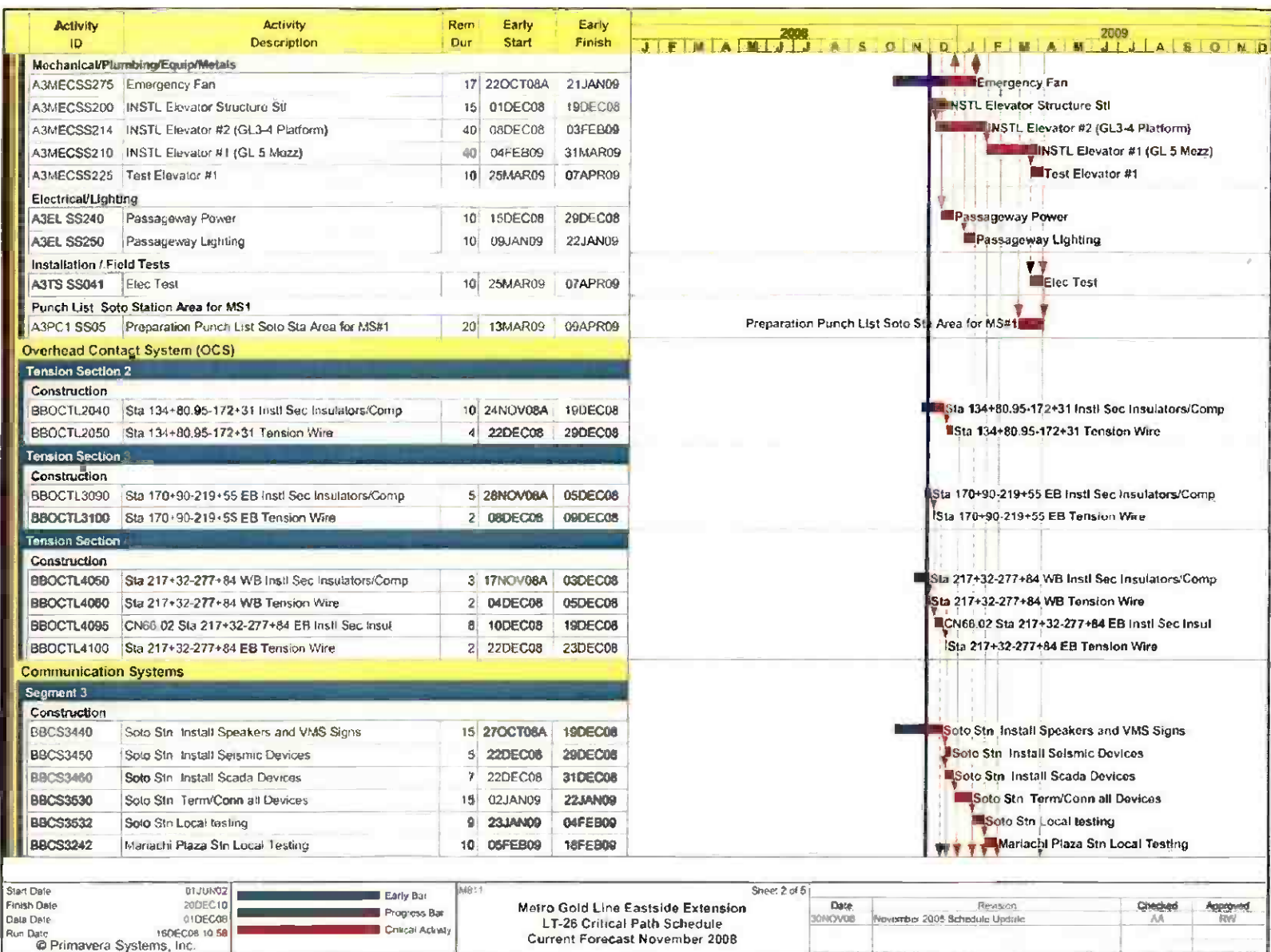
LAC MTA Board Approval

Six-month lookahead schedule for Contract C0803 reflects the contractor's current CPM schedule.

PROJECT MASTER SCHEDULE CRITICAL PATH (1 of 5)



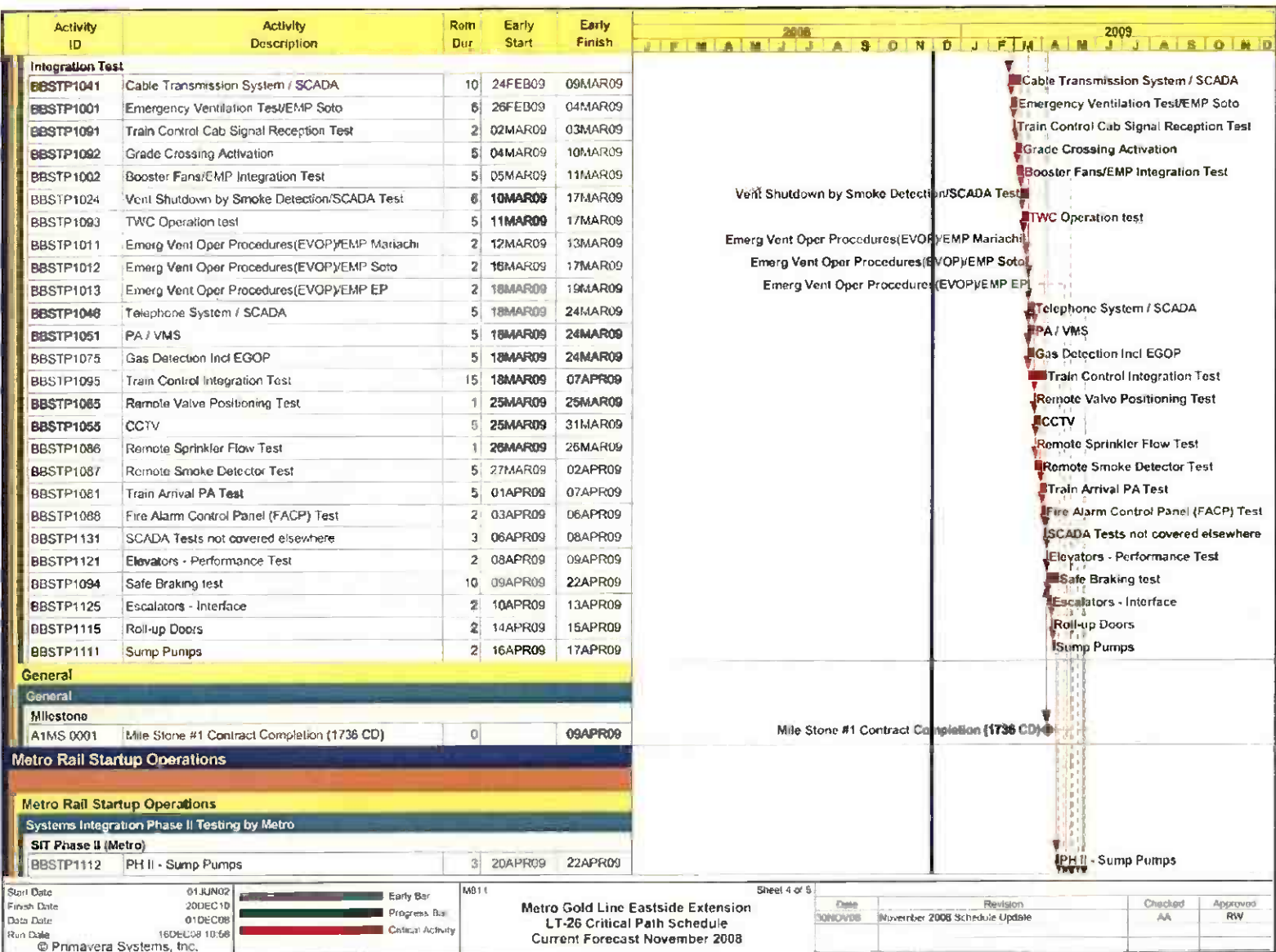
PROJECT MASTER SCHEDULE CRITICAL PATH (2 of 5)



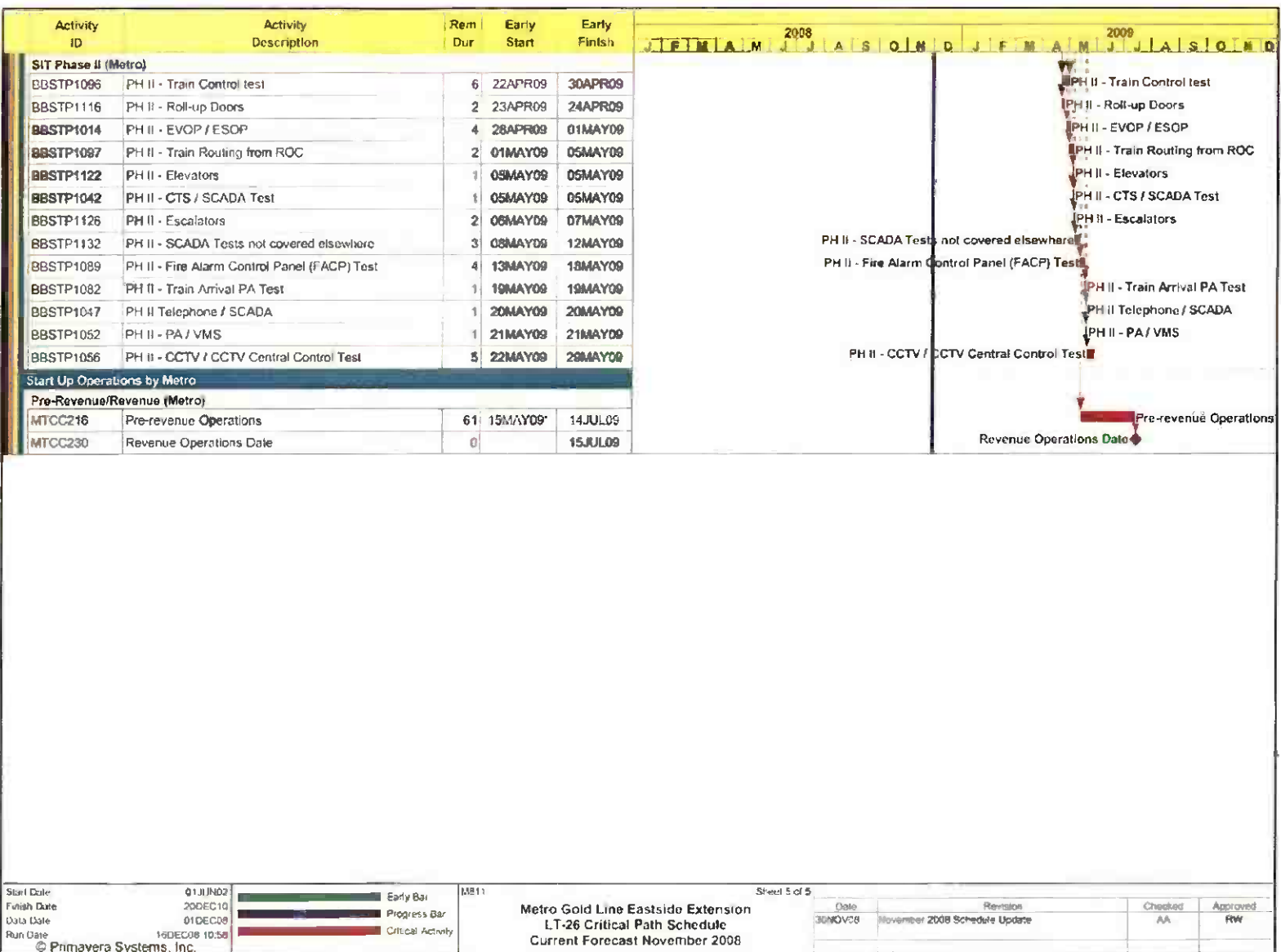
PROJECT MASTER SCHEDULE CRITICAL PATH (3 of 5)



PROJECT MASTER SCHEDULE CRITICAL PATH (4 of 5)



PROJECT MASTER SCHEDULE CRITICAL PATH (5 of 5)



Start Date	01JUN02	Early Bar	MS11	Sheet 5 of 5	Date	Revision	Checked	Approved
Finish Date	20DEC10	Progress Bar			30NOV08	November 2008 Schedule Update	AA	RW
Data Date	01DEC08	Critical Activity						
Run Date	16DEC08 10:58							

© Primavera Systems, Inc.

Metro Gold Line Eastside Extension
LT-26 Critical Path Schedule
Current Forecast November 2008

CRITICAL PATH NARRATIVE

Current Critical Path Analysis

The C0803 contractor (ELRTC) continued assembly of station escalators at an off-site facility and installation of escalators 3 and 4 at the Boyle Heights/Mariachi Plaza Station. Fabrication of station elevator frames continues on site and the installation of elevator # 2 began this period. Delivery of key mechanical and electrical components; emergency fans and Motor Control Centers (MCC) continued, and construction crews began installation of both at the underground stations.

ELRTC is reporting their overall progress to be eight days behind schedule and is continuing mitigation measures with subcontractors to maintain longer shift hours. Metro remains confident that the time lost in the schedule can be mitigated without impacting the Revenue Operations Date.

There are several parallel critical paths in the current schedule. One is through installation and testing of elevators at both underground stations. Another is through installation and testing of emergency fans also at both underground stations. One more is the communications installation at Soto Station, and installation of communications throughout the alignment. Local facilities testing are the last stage of the critical path prior to entering the final test stage, where Systems Integration Testing and Pre-Revenue Operations are conducted.

PROJECT COST STATUS

COST REPORT BY ELEMENT

ORIGINAL SCOPE ACTIVITIES

DOLLARS IN THOUSANDS

ELEMENT	DESCRIPTION	ORIGINAL BUDGET	CURRENT BUDGET		COMMITMENTS		EXPENDITURES		CURRENT FORECAST		BUDGET / FORECAST VARIANCE
			PERIOD	TO DATE	PERIOD	TO DATE	PERIOD	TO DATE	PERIOD	TO DATE	
C	CONSTRUCTION	633,221	-	650,702	141	656,534	9,575	565,896	-	650,702	-
S	SPECIAL CONDITIONS	19,494	-	57,032	271	50,569	362	37,992	-	57,032	-
R	RIGHT-OF-WAY	40,358	-	37,681	-	38,488	(612)	37,671	-	37,681	-
P	PROFESSIONAL SERVICES	135,304	-	135,860	35	133,980	873	120,240	-	135,860	-
PC	PROJECT CONTINGENCY	60,254	-	7,401	-	-	-	-	-	7,401	-
PR	PROJECT REVENUE	(4,617)	-	(4,662)	-	-	-	(44)	-	(4,662)	-
	SUBTOTAL	884,014	-	884,014	447	879,571	10,198	761,755	-	884,014	-
PF	PROJECT FINANCE COST	14,800	-	14,800	(3,143)	2,145	(3,143)	2,145	-	14,800	-
	TOTAL	898,814	-	898,814	(2,696)	881,716	7,055	763,900	-	898,814	-

NOTE: EXPENDITURES ARE CUMULATIVE THROUGH OCTOBER 2008

PROJECT COST ANALYSIS

Original Budget

The Full Funding Grant Agreement (FFGA) was adopted June 1, 2004 in the amount of \$898.8 million. The Original Budget reflects the adopted FFGA.

Current Budget and Current Forecast

The Current Budget and Forecast remain the same at \$898.8 million.

Commitments

The Commitments decreased by a total of \$2.7 million this period. In the Construction element there was an increase of \$0.1 million due to executed modifications associated with Contract C0803 – Tunnel, Stations, Trackwork, and Systems. In the Special Conditions element there was an increase of \$0.3 million due to environmental mitigation, 3rd Party Master Cooperative Agreements with the City of LA, and Metro Art Program. In the Project Finance Cost element there was a decrease of \$3.1 million due to the interest income received. Interest earned is received monthly and interest payments are made semi-annually. Interest earnings are not projected to be more than the interest costs. The \$881.7 million in Commitments to date represents 98.1% of the Original Budget.

Expenditures

Expenditures are cumulative through October 2008. The Expenditures increased by a total of \$7.1 million this period. In the Construction element there was an increase of \$9.6 million primarily due to costs associated with Contract C0803 -Tunnel, Stations, Trackwork and Systems. In the Special Conditions element there was an increase of \$0.4 million primarily for costs associated with the 3rd Party Master Cooperative Agreements with the City of LA, and Metro Art Program. In the Right-of-Way element there was a decrease of \$0.6 million for a property acquisition accrual that did not occur. In the Professional Services element there was an increase of \$0.9 million primarily for costs associated with Metro Project Administration, Design Support During Construction and Construction Management Services. In the Project Finance Cost element there was a decrease of \$3.1 million that reflects interest income received. The October 2008 invoice for Contract C0803 in the amount of \$6.7 million was posted in the Metro's Financial Information System (FIS) on November 13, 2008 and will be reflected in the next reporting period. The \$763.9 million in Expenditures to date represents 85.0% of the Original Budget.

PROJECT COST STATUS

COST REPORT BY ELEMENT CONCURRENT NON-FFGA PROJECT ACTIVITIES DOLLARS IN THOUSANDS

ELEMENT	DESCRIPTION	ORIGINAL BUDGET	CURRENT BUDGET		COMMITMENTS		EXPENDITURES		CURRENT FORECAST		BUDGET / FORECAST VARIANCE
			PERIOD	TO DATE	PERIOD	TO DATE	PERIOD	TO DATE	PERIOD	TO DATE	
C	CONSTRUCTION	18,000	-	41,174	-	35,467	212	24,073	-	41,174	-
S	SPECIAL CONDITIONS	-	-	2,719	-	2,683	6	1,721	-	2,719	-
R	RIGHT-OF-WAY	-	-	-	-	-	-	-	-	-	-
P	PROFESSIONAL SERVICES	-	-	2,897	-	3,333	204	1,336	-	2,897	-
PC	PROJECT CONTINGENCY	-	-	-	-	-	-	-	-	-	-
PR	PROJECT REVENUE	-	-	(4,087)	-	(4,789)	-	(279)	-	(4,087)	-
SUBTOTAL		18,000	-	42,703	-	36,695	421	26,852	-	42,703	-
PF	PROJECT FINANCE COST	-	-	-	-	-	-	-	-	-	-
TOTAL		18,000	-	42,703	-	36,695	421	26,852	-	42,703	-

NOTE: EXPENDITURES ARE CUMULATIVE THROUGH OCTOBER 2008

PROJECT COST ANALYSIS

Original Budget

The Metro Board adopted the Original Budget of \$18.0 million on March 24, 2005.

Current Budget and Current Forecast

The Current Budget and Forecast remain the same at \$42.7 million.

Commitments

The Commitments remain the same at \$36.7 million. The \$36.7 million in Commitments to date represents 85.9% of the Current Budget.

Expenditures

Expenditures are cumulative through October 2008. The Expenditures increased by \$0.4 million this period primarily for costs associated with the traction power sectionalization, work requested by the County of Los Angeles for corrugated metal pipe storm drain replacement on 3rd St., street restoration and improvements, urban design elements, Metro Project Administration, Design Support During Construction, and Construction Management. The October 2008 invoice for Contract C0803 in the amount of \$0.3 million was posted in the Metro's Financial Information System (FIS) on November 13, 2008 and will be reflected in the next reporting period. The \$26.9 million in Expenditures to date represents 62.9% of the Current Budget.

Metro Gold Line Eastside Extension
Monthly Project Status Report

November 2008

FINANCIAL/GRANT STATUS – ORIGINAL SCOPE ACTIVITIES

NOVEMBER 2008

STATUS OF FUNDS BY SOURCE

SOURCE	(A) ORIGINAL BUDGET	(B) TOTAL FUNDS ANTICIPATED	(C) TOTAL FUNDS AVAILABLE	(D) COMMITMENTS \$	(D/B) %	(E) EXPENDITURES \$	(E/B) %	(F) BILLED TO FUNDING SOURCE \$	(F/B) %
FEDERAL - SECTION 5309 NEW START	\$490.700	\$490.700	\$333.593	\$487.927	99%	\$413.915	84% (1)	\$403.452	82%
FED - SECTION 5309 FIXED GUIDEWAY	\$23.100	\$12.000	\$12.000	\$12.000	100%	\$12.000	100%	\$12.000	100%
FEDERAL - CMAQ	\$10.300	\$10.300	\$10.276	\$10.276	100%	\$10.276	100%	\$10.276	100%
REGIONAL IMPROVEMENT PROG - FED	\$179.600	\$4.600	\$4.600	\$4.600	100%	\$4.600	100%	\$4.600	100%
REGIONAL IMP PROG - STATE	\$0.600	\$175.600	\$131.796	\$175.600	100%	\$131.796	75%	\$131.796	75%
STATE TCRP	\$45.000	\$45.000	\$45.000	\$45.000	100%	\$45.000	100%	\$45.000	100%
PROP A 35% / PROP C 40%/PROP 25%	\$124.614	\$135.714	\$132.024	\$134.068	99%	\$134.068	99%	\$134.068	99%
LEASE REVENUES	\$10.100	\$10.100	\$10.100	\$10.100	100%	\$10.100	100%	\$10.100	100%
ACCRUALS									
SUB-TOTAL	\$884.014	\$884.014	\$679.389	\$879.571	99%	\$761.755	86%	\$751.292	85%
PROP A / PROP C (INTEREST COST)	\$14.800	\$14.800	\$2.145	\$2.145	14%	\$2.145	14%	\$2.287	15%
TOTAL	\$898.814	\$898.814	\$681.534	\$881.716	98%	\$763.900	85%	\$753.579	84%

NOTE: EXPENDITURES ARE CUMULATIVE THROUGH OCTOBER 2008.

STATUS OF FUNDS ANTICIPATED

FEDERAL SECTION 5309 NEW STARTS: LACMTA has received an appropriation of \$333.6M through FY08. LACMTA submitted a grant application for \$78.4 M in March 2008. The grant was approved on June 17, 2008 and funds are available for drawdown.

RIP-STATE: LACMTA's allocation request of \$43.8M to the CTC was approved in July 2008. Program supplement is pending execution from the State. Execution is expected in December 2008.

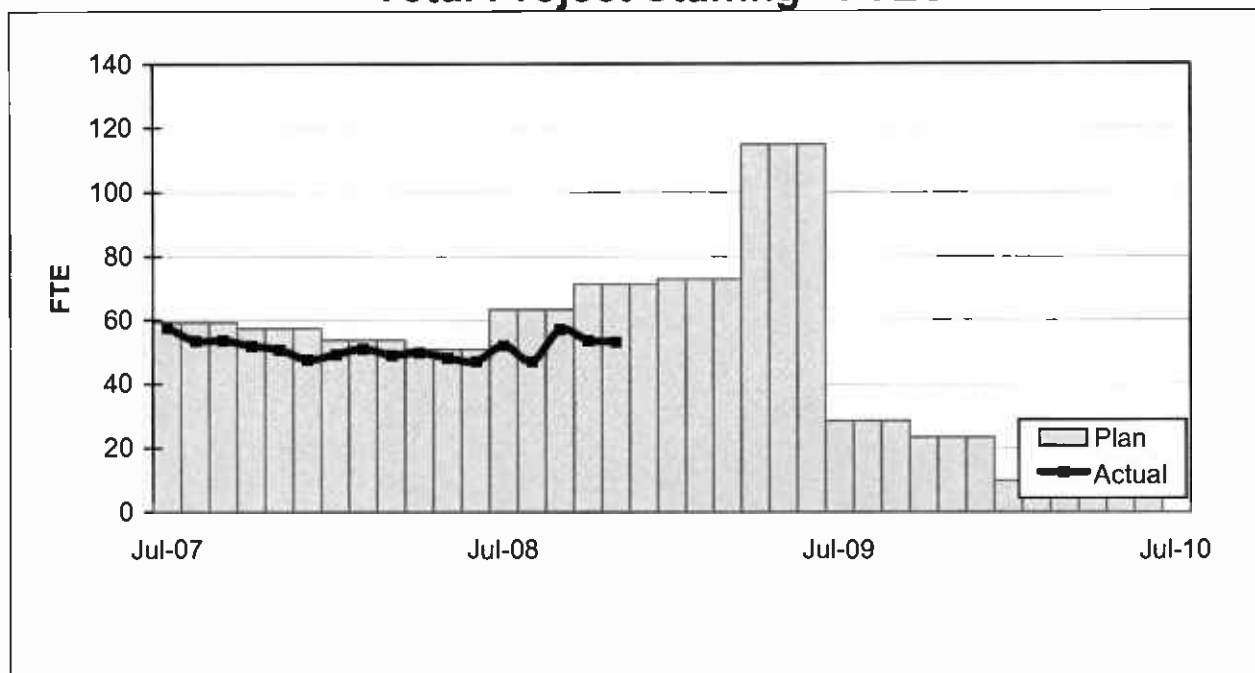
FINANCIAL/GRANT STATUS
CONCURRENT NON-FFGA PROJECT ACTIVITIES

NOVEMBER 2008		STATUS OF FUNDS BY SOURCE							
SOURCE	(A) APPROVED BUDGET	(B) TOTAL FUNDS ANTICIPATED (1)	(C) TOTAL FUNDS AVAILABLE	(D) COMMITMENTS \$	(D/B) %	(E) EXPENDITURES \$	(E/B) %	(F) BILLED TO FUNDING SOURCE \$	(F/B) %
PROP C 40%	\$14.000	\$14.000	\$14.000	\$14.000	100%	\$7.964	57%	\$3.687	26%
PROP C 10%	\$4.000	\$4.000	\$4.000						
STATE TCR	\$0.000	\$24.086	\$24.086	\$22.695	94%	\$18.888	78%	\$18.888	78%
STATE TSA	\$0.000	\$0.617	\$0.000	\$0.000	0%	\$0.000	0%	\$0.000	0%
TOTAL	\$18.000	\$42.703	\$42.086	\$36.695	86%	\$26.852	63%	\$22.575	53%

NOTE: EXPENDITURES ARE CUMULATIVE THROUGH OCTOBER 2008.

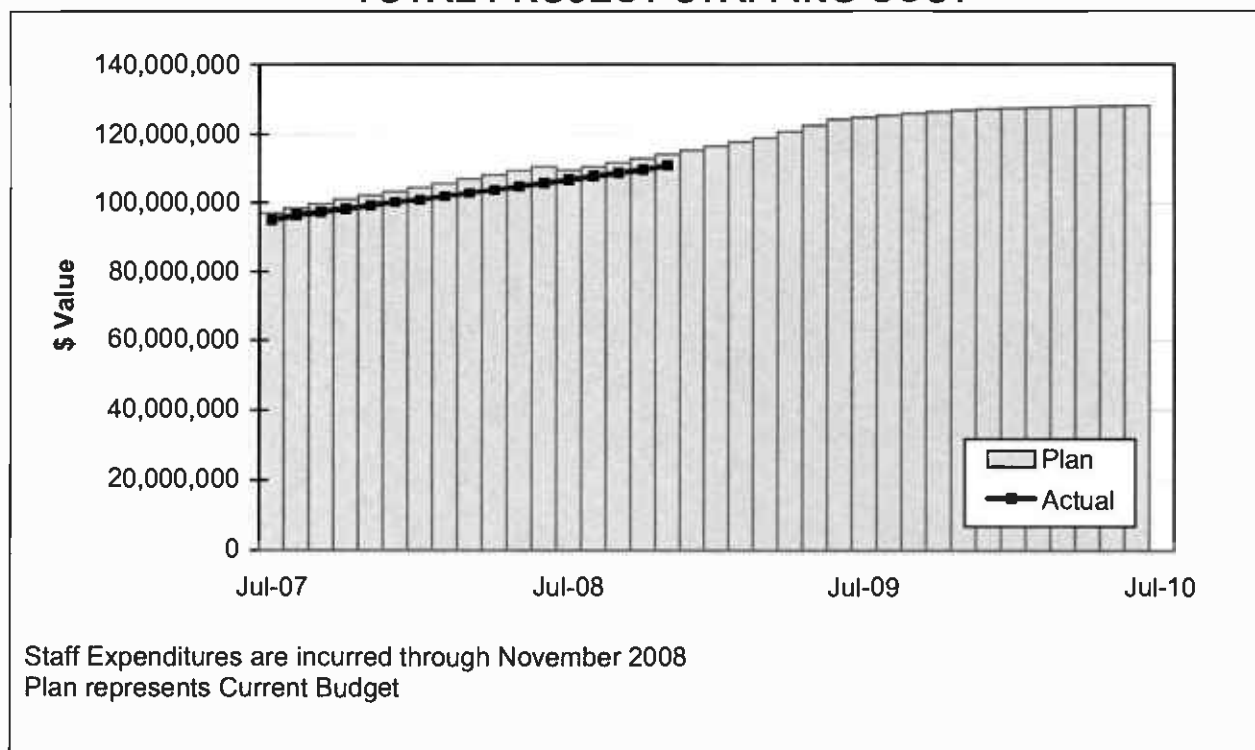
STAFFING STATUS

Total Project Staffing - FTES



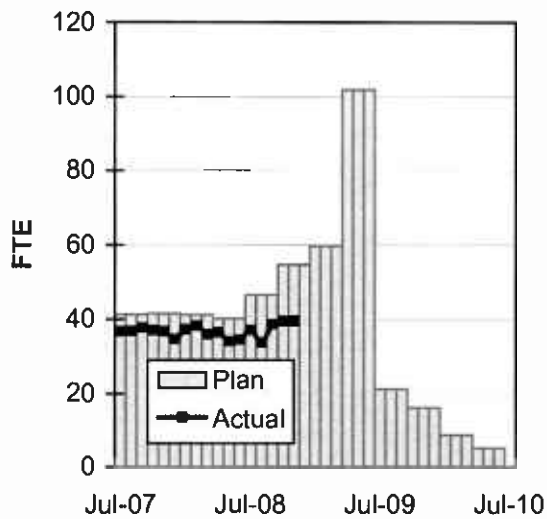
STAFFING STATUS

TOTAL PROJECT STAFFING COST

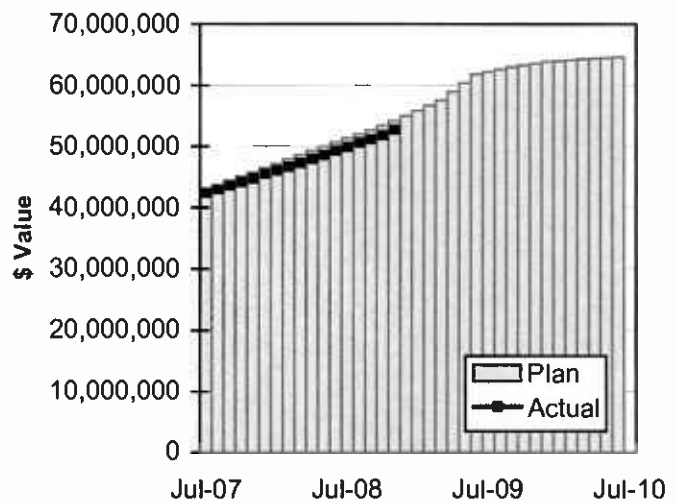


STAFFING STATUS

DIRECT AGENCY - FTES

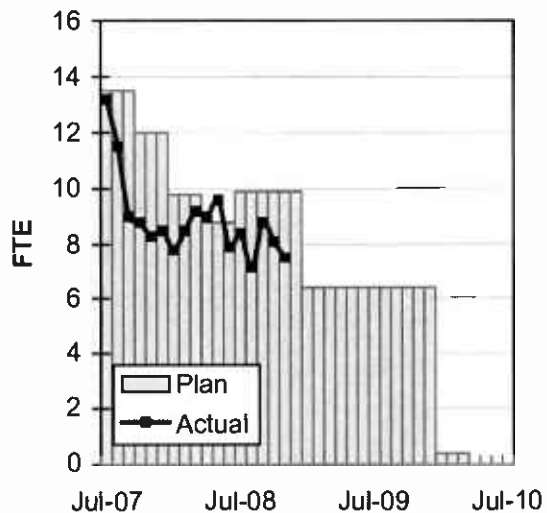


DIRECT AGENCY - COST

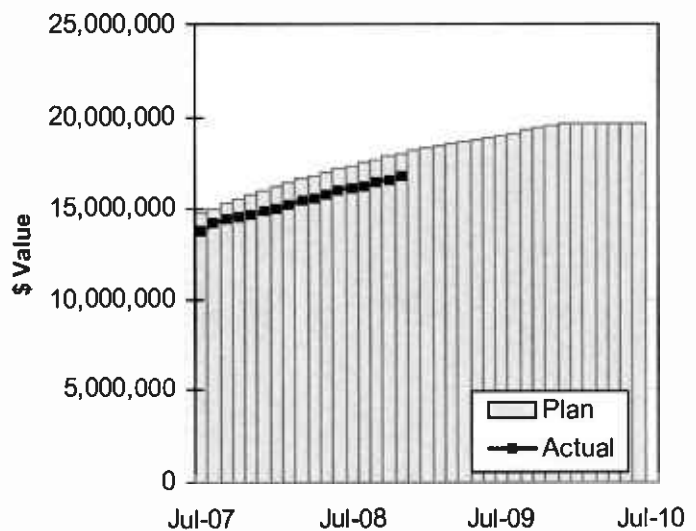


Staff Expenditures are incurred through November 2008.
 Plan represents Current Budget

CONSTRUCTION MGMT - FTES



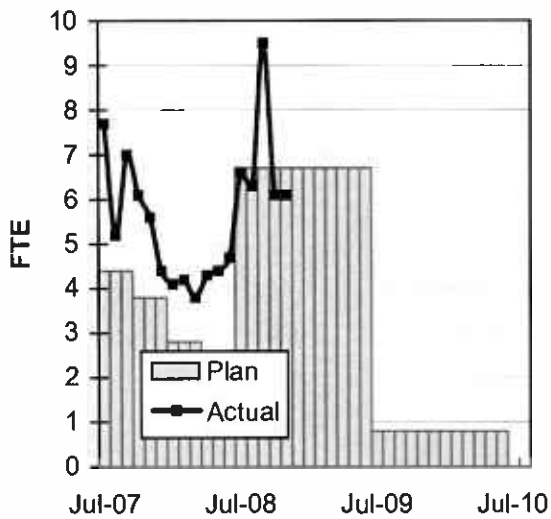
CONSTRUCTION MGMT - COST



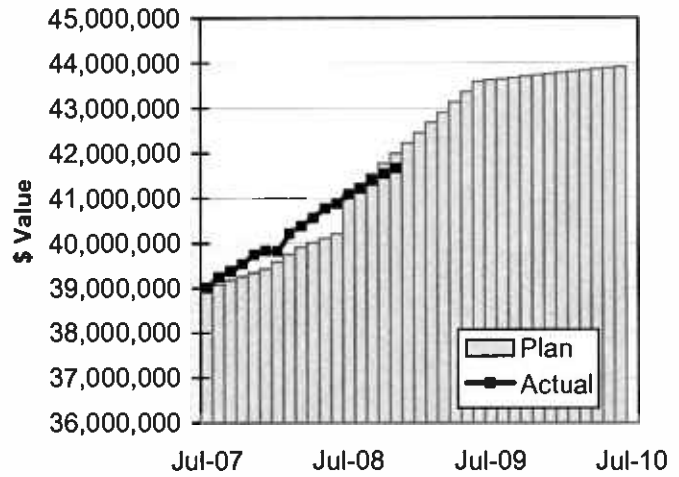
Staff Expenditures are incurred through November 2008.
 Plan represents Current Budget.

STAFFING STATUS

ELRT PARTNERS - FTES



ELRT PARTNERS - COST



Staff Expenditures are incurred through November 2008.
 Plan represents Current Budget

REAL ESTATE STATUS

- For C0803, the tunnel portion of the alignment, 40 parcels were required for acquisition (11 full takes, 4 partial takes, 20 sub-surface easements/temporary construction easements, 3 sub-surface easements/building protection, and 2 building protections).
- For C0803, the at-grade portion of the alignment, 27 parcels were required for acquisition (17 full takes, 9 partial takes and 1 surface easement). Nine parcels were required for the LAUSD Ramona Opportunity High School site reconfiguration.
- For C0802, 2 parcels were required (1 surface easement and 1 full take parcel).
- Two Encroachment Permits were obtained from Caltrans for the C0803-Tunnel. Three street closures were obtained from the City of LA.

REAL ESTATE ACQUISITION SCHEDULE SUMMARY

<i>Number of Parcels</i>	Required	Acquired	On Schedule	Behind Schedule	
				Number	Avg. Calendar Days
This Period	69	69	0	0	0
Last Period	69	69	0	0	0

REAL ESTATE STATUS TO DATE BY CONTRACT ACQUISITION PHASE

CONTRACT NO.	Number of Parcels (A+B+C+D+E)	Agreements Signed (A)	Parcels in Condemnation (B)	Under Negotiation (C)	In Appraisal Process (D)	Inactive Parcels (E)	Parcels Available
C0803-Tunnel	40	40	0	0	0	0	40
C0803-At-Grade	27	27	0	0	0	0	27
C0802	2	2	0	0	0	0	2
TOTAL	69	69	0	0	0	0	69
LAST PERIOD	69	69	0	0	0	0	69

ENVIRONMENTAL STATUS

- Mahdi Molecular Anthropology Laboratory was unsuccessful in extracting DNA from the human remains taken from the Los Angeles Crematorium. No further attempts to extract DNA will be made.
- Met with representatives of Cal State Los Angeles to discuss proposed research projects on the artifacts extracted from the Los Angeles Crematorium.
- Finalizing an agreement with UCLA Fowler Museum for the curation of artifacts from the Eastside Extension.

COMMUNITY RELATIONS STATUS

- Distributed three construction notices which reached approximately 20,850 residences/businesses. Activities included civil improvements and landscaping.
- Met with 26 residents/business owners to coordinate construction activities.
- Delivered one Open During Construction banner.
- Held monthly Executive Review Advisory Committee Meeting and Review Advisory Committee Meeting.
- Supported the East Los Angeles Chamber of Commerce Installation Dinner, Boyle Heights Multi-Cultural Parade, Casa de la Cultura Annual Dinner, Boyle Heights Mariachi Festival and the Santa Cecilia Festival.

QUALITY ASSURANCE STATUS

- Continued to review the Design Builder's Monthly Asphalt, Concrete Compressive Strength and Soils Compaction test report summaries - areas of concern are coordinated to resolution with the onsite lab representative.
- Conducted verification testing of Design Builder's special inspections utilizing independent testing laboratory technician; no issues to report.
- The results of field surveillance activities are documented in Weekly Surveillance Reports, including color digital pictures identifying sites of surveillance and issues of concern.

SAFETY STATUS

- Participated in weekly progress meetings with Construction Managers and ELRTC management personnel to discuss safety related issues and construction schedule.
- Conducted Safety and Security trespasser drills with ELRTC safety and security personnel.
- Conducted security audit/reviews to ensure compliance with contract specifications.
- Participated in ELRTC Rail Activation Training Meeting.
- Monitored construction activities on a daily basis, including weekends, to ensure contractor compliance with Contract Specification.
- ELRTC and their subcontractors reported zero recordable incidents and 77,057 work hours for the month of November 2008. A total of thirty-nine (39) recordable incidents have occurred Project to Date. Total Project to Date work hours are 3,687,573. Injury Rates for Recordable incidents are 2.1; well below the published incident rate of 5.3.

ART DEVELOPMENT STATUS

- Coordination meetings with Metro Construction and ELRTC for artwork fabrication/installation schedules for eight stations.

THIRD PARTY AGREEMENT STATUS

Third Party	Type of Agreement	Forecast Execution Date	Required Need Date	Status/ Comments
City of Los Angeles	Amendment	Completed	N/A	Executed December 2002.
Los Angeles County	Master	Completed	N/A	Executed April 2003.
Caltrans (All Projects)	Master	Completed	N/A	Executed July 2003.
Caltrans (101)	Design	Completed	N/A	Executed July 2003.
Caltrans (101)	Construction	Completed	N/A	Executed September 2003.
Caltrans (101)	Maintenance	12/08	Project Completion	The initial negotiation meeting was held on 1/9/03. LACMTA received a draft from Caltrans on 1/22/04. LACMTA reviewed and submitted the agreement to Caltrans on 2/10/04. A follow up call was made on 10/20/05 but no response to date.
LADWP (Water/Power)	Amendment	12/08	*6/04	LACMTA Management, County Counsel, and LACMTA Board staff have participated in meetings with DWP to complete negotiations, since the "Deadline and Delay" clause is not acceptable to LADWP. Alternative language was forwarded to LACMTA Management and County Counsel for review on 10/7/05. LACMTA CEO is to speak with LADWP CEO.
So. Cal. Edison Co.	Amendment	N/A	N/A	SCE Executive Legal Branch stated on 2/25/05 they have no intention of signing agreement.
The Gas Company	Amendment	Completed	N/A	Executed May 2005.
SBC/AT & T	Amendment	Completed	N/A	Executed May 2005. SBC has been acquired by AT&T and has formed a new corporation TCM for work in Southern California. A new agreement has been negotiated with Metro and TCM, which was approved by the Metro Board in April. The new agreement mirrors the SBC agreement except for some minor changes in the insurance language.
Adelphia Cable Company	Amendment	12/08	*6/04	LACMTA received a draft from Adelphia for review. LACMTA Management and County Counsel reviewed the amendment and returned the document to Adelphia with comments. Adelphia's Legal Department is reviewing the document and follow-up calls were made on 10/20/05 and 11/16/05.
Calif Wtr Service Co	Master	Completed	N/A	Executed May 2005.
L.A. County Sanitation Districts	N/A	N/A	N/A	In a letter dated 3/26/03, the Sanitation District stated that there is not a need for an agreement since there are no relocations related to their facilities. The Sanitation District will review submittals related to encasements of their facilities on Indiana Street.
MCI Worldcom	Amendment	Completed	N/A	Executed May 2005.
Metropolitan Wtr Dist	Amendment	Completed	N/A	Executed May 2003.

THIRD PARTY AGREEMENT STATUS

Third Party	Type of Agreement	Forecast Execution Date	Required Need Date	Status/ Comments
Verizon Wireless	Amendment	12/08	*6/04	The revised draft amendment was hand delivered to Verizon on 11/19/03 and an electronic copy was sent to them 2/19/04. Verizon did respond with comments, which were reflected in a revised agreement sent 4/05. Verizon legal is completing final review. Follow up calls were made on 10/20/05 and 11/16/05. Verizon has now joined MCI and once the legal work is complete in late February 2006, LACMTA may be able to use the MCI Agreement for Verizon work. E-mailed MCI Agreement to Verizon Representative for consideration as overall agreement covering Verizon and MCI as the new Verizon.
GST	N/A			Facilities are not impacted by Eastside Construction
Exxon Mobil Oil Company	N/A			Facilities are not impacted by Eastside Construction
Pacific Pipeline Company	N/A			Facilities are not impacted by Eastside Construction
Kinder Morgan Pipeline Company	N/A			Facilities are not impacted by Eastside Construction
Tosco Refining Company	N/A			Facilities are not impacted by Eastside Construction
Equilon Pipeline Company	N/A			Facilities are not impacted by Eastside Construction
Level 3 Communications	N/A			Facilities are not impacted by Eastside Construction
Broadwing Communications	N/A			Facilities are not impacted by Eastside Construction
Eller Media	N/A			Facilities are not impacted by Eastside Construction

* Work will be performed under the current MCA and will not delay ongoing work.

Metro Gold Line Eastside Extension Monthly Project Status Report

November 2008

CPUC CROSSING SUMMARY

Batch	Application Status	Initial Package Submittal to MTA	Field Diagnostic Meeting	Revised Drawings Due to MTA	Draft Write-up to MTA	Draft Package Submittal to PUC Local office and Agencies	Final Package Submittal to PUC	CPUC Final Approval
1	Complete	8/5/02	8/12/02	8/26/02	9/6/02	9/6/02	9/8/2002	Approved
2	Complete	10/4/02	10/11/02	10/25/02	11/6/02	11/22/02	11/22/2002	Approved
3	Complete	2/6/03	2/27/03	3/10/03	1/27/03	4/11/02	4/18/2003	Approved
4	Complete	12/14/02	1/15/03	1/29/03	11/13/02	5/5/03	6/18/2003	Approved
4A	Complete	1/24/03	1/29/03	3/14/03	2/7/03	9/5/03	1/23/2004	Approved
6	Complete	3/19/03	3/26/03	6/20/03	2/7/03	9/5/03	9/12/2003	Approved
7	Complete	12/11/02	12/18/02	3/31/03	2/7/03	5/5/03	7/25/2003	Approved
8	Complete	11/26/02	12/18/02	3/31/03	11/15/02	6/6/03	5/21/2004	Approved
9	Complete	1/20/03	1/29/03	3/31/03	11/22/02	8/29/03	9/12/2003	Approved
10	Complete	12/11/03	12/18/02	3/10/03	11/22/02	5/5/03	8/29/2003	Approved
11	Complete	2/13/03	2/27/03	4/18/03	12/6/02	6/6/03	8/29/2003	Approved
12	Complete	2/13/03	2/27/03	4/18/03	12/13/02	6/6/03	9/5/2003	Approved
13	Complete	2/6/03	2/20/03	4/18/03	2/21/03	6/6/03	9/1/2004	Approved
14	Complete	1/8/03	1/15/03	3/14/03	11/12/02	8/29/03	10/30/2003	Approved
15	Complete	2/26/03	N/A	N/A	2/21/03	6/6/03	8/29/2003	Approved
16	Complete	2/26/03	N/A	N/A	2/28/03	6/6/03	8/29/2003	Approved
17	Complete	1/8/03	1/15/03	N/A	2/14/03	5/5/03	6/13/2003	Approved
18	Complete	1/8/03	1/15/03	3/20/03	2/14/03	5/5/03	6/13/2003	Approved
Agency Responsible		ELRTP	MTA	ELRP	ELRTP	MTA	MTA	

Batch No. 5 has been removed, as the Midway Yard will be utilized.

SHADED AREAS REPRESENTS COMPLETION

All applications are approved.

Batch Descriptions		
1	1st / Alameda	10 3rd / Ford
2	Alameda / Temple	3rd / McDonnell
	1st / Hewitt	3rd / Arizona
	Ped Crossings @ 1st / Alameda Station	11 3rd / Mednik
3	1st / Vignes	3rd / Civic Center Drive
4	1st / Lorena	3rd / La Verne
4A	Indiana/1st	12 3rd / Driveways to Sherriff's Station
	Indiana/3rd	3rd / Wood / Via Corona / Pomona / Beverly
	Indiana Pedestrian Crossing	13 3rd / 60 Fwy WB Connector
6	1st / Mission	3rd / 60 Fwy over ELRT
	1st / Anderson	3rd / 710 Fwy SW Connector
	1st / Clarence	3rd / Bridge over 710 Fwy
	1st / Utah	3rd / 710 Fwy SE Connector
	1st/Gless Pedestrian Crossing	14 Union Station Service Road
7	3rd / Rowan	15 1st / Santa Fe
		1st / Myers
8	3rd / Gage	16 1st / MTA
	3rd / 60 Fwy WB Ramps	1st / BNSF
	3rd /Downey	1st / Union Pacific

CONTRACT C0802 STATUS

Description: 101 Freeway Bridge Overcrossing Contractor: Brutoco Engineering & Construction	Contract No. C0802 Status as of: November 28, 2008																								
Progress/Work Completed: * Bridge work was completed in March 2007 * Plant Maintenance period achieved November 2007 Areas of Concern: * None	Major Activities (In Progress): * None Major Activities Next Period: * None																								
Schedule Summary: Date of Award: 09/07/04 Notice to Proceed: 09/22/04 Original Contract Duration: 700 CD Current Contract Duration: 775 CD Elapsed Time from NTP: 904 CD * * Note: Elapsed time to Milestone # 1 completion	<table border="1" style="width: 100%; border-collapse: collapse;"> <thead> <tr> <th></th> <th>Original Contract Dates</th> <th>Time Extension</th> <th>Current Contract</th> <th>Forecast</th> <th>Variance CDs</th> </tr> </thead> <tbody> <tr> <td>Notice to Proceed</td> <td>09/22/04</td> <td>0</td> <td>09/22/04</td> <td>09/22/04</td> <td>0</td> </tr> <tr> <td>Milestone 1 - Complete Abutment No. 10</td> <td>06/26/06</td> <td>49</td> <td>08/14/06</td> <td>03/15/07</td> <td>-213</td> </tr> <tr> <td>Milestone 2- Complete All Work Without Plant Establishment t</td> <td>08/23/06</td> <td>75</td> <td>11/06/06</td> <td>08/06/07</td> <td>-273</td> </tr> </tbody> </table>		Original Contract Dates	Time Extension	Current Contract	Forecast	Variance CDs	Notice to Proceed	09/22/04	0	09/22/04	09/22/04	0	Milestone 1 - Complete Abutment No. 10	06/26/06	49	08/14/06	03/15/07	-213	Milestone 2- Complete All Work Without Plant Establishment t	08/23/06	75	11/06/06	08/06/07	-273
	Original Contract Dates	Time Extension	Current Contract	Forecast	Variance CDs																				
Notice to Proceed	09/22/04	0	09/22/04	09/22/04	0																				
Milestone 1 - Complete Abutment No. 10	06/26/06	49	08/14/06	03/15/07	-213																				
Milestone 2- Complete All Work Without Plant Establishment t	08/23/06	75	11/06/06	08/06/07	-273																				
Physical Percent Complete: Physical completion ** as of this reporting period is: 100.00% ** Note: Physical completion assessment reflects work completed and invoice amount shown in Caltrans Monthly Progress/Expense Report No. 30.	<table style="width: 100%;"> <tr> <th style="text-align: left;">Cost Summary:</th> <th style="text-align: right;">\$ In millions</th> </tr> <tr> <td>1. Award Value:</td> <td style="text-align: right;">6.42</td> </tr> <tr> <td>2. Executed Modifications:</td> <td style="text-align: right;">0.00</td> </tr> <tr> <td>3. Approved Change Orders:</td> <td style="text-align: right;">0.00</td> </tr> <tr> <td>4. Current Contract Value (1+2+3):</td> <td style="text-align: right;">6.42</td> </tr> <tr> <td>5. Incurred Cost:</td> <td style="text-align: right;">6.42</td> </tr> </table>	Cost Summary:	\$ In millions	1. Award Value:	6.42	2. Executed Modifications:	0.00	3. Approved Change Orders:	0.00	4. Current Contract Value (1+2+3):	6.42	5. Incurred Cost:	6.42												
Cost Summary:	\$ In millions																								
1. Award Value:	6.42																								
2. Executed Modifications:	0.00																								
3. Approved Change Orders:	0.00																								
4. Current Contract Value (1+2+3):	6.42																								
5. Incurred Cost:	6.42																								

CONTRACT C0803 STATUS

Description: Tunnel, Stations, Trackwork & Systems Contractor: Eastside LRT Constructors	Contract No. C0803 Status as of: November 28, 2008					
Progress/Work Completed: * Completed work around Mariachi Plaza Sta. (MPS) Kiosk * Acoustic spray at MPS emergency fan exhaust shaft # 2 * Began installation of elevator # 2 frame at MPS * Delivered and set MCCs and UPS battery cabinets at MPS * Poured elevator # 1 upper walls and stair # 4 at Soto Station (SS) * Poured stairs 1A and 1B roof slab at SS * Delivered and set emergency fans at SS fan room - east * Installed Train Control (TC) signals and signs at Union Station * Cross-walks, curb, gutter and bus pad - Alameda and 1st streets * Grind/overlay 3rd Street paving along Segments 5 and 6 * Installed TC impedance bonds in Segments 2 & 3 * Energized and commissioned Traction Power Substation (TPS) # 5 * Poured public access walkways at the Maravilla Station * Completed architectural platform paving at at Indiana and Atlantic Stations * Painted the canopy frame at the Indiana Station * Terminating wire connections to systems equipment at the Atlantic, East Los Angeles Civic Center (ELACC) and Maravilla Stations Areas of Concern: The contractor is projecting an 8 day delay for completion of Milestone # 1, which they plan to mitigate by working longer hours. At this time, there is no schedule impact to ROD.	Major Activities (In Progress): * Architectural finishes at the MPS entrance plaza * Install tile on the mezzanine walls at MPS and SS * Assemble and install escalators at MPS and SS * Ceiling grid and panels at MPS and SS platform and mezz. levels * Train Control cabinets and panels at MPS and SS TC&C rooms * Stairs 1A and 1B sloping slab at SS * Install OCS messenger and contact wire in Segments 1 & 3 * Pull lighting and power wire in both tunnels * Connect 34.5 KV cable to the overhead catenary - Seg. 6 & 7 * Indiana Street widening - west side * Architectural platform paving at LT/AD and Pico/Aliso (PA) Sta. * Canopy painting at the LTAD and ELACC Stations * Install systems equipment at the LTAD and PA Sta. TC&C rooms * Began the Local Field Acceptance Testing (LFAT) phase * Fabricate jet fans and dampers Major Activities Next Period: * Architectural finishes at the SS entrance plaza * Install elevators, emergency fans and MCCs at MPS and SS * Install 34.5 KV power cable in the eastbound tunnel * Mechanical and electrical equipment at all cross passages * Continue LFAT phase throughout the alignment * Commission remaining TPS substations * Painting of canopies at Atlantic and Maravilla Stations * Complete OCS installation at Union Station and in the tunnels * Set TC cabinets in the above grade (AG) stations TC&C rooms * PAVMS equipment, lighting and finishes at AG stations * Final paving, striping, lighting and traffic signals-Segs. 1, 2 and 4					
Schedule Summary: Date of Award: 06/01/04 Notice to Proceed: 07/01/04 Original Contract Duration: 1795 CD Current Contract Duration: 1882 CD Elapsed Time from NTP: 1614 CD Option D Contract duration 90 CD Complete		Original Contract Dates	Time Extension	Current Contract	Forecast	Variance CDs
	Notice to Proceed	07/01/04	0	07/01/04	07/01/04	0
	Milestone 1 - Contract Completion. Complete all systems integration testing and ready for MTA's pre-revenue operation testing.	12/31/08	91	04/01/09	04/09/09	-8
	Milestone 3 - Complete Universal Fare System Equipment area.	04/30/08	250	01/05/09	01/05/09	0
	Milestone 5 - Vacate all staging areas and turn over to MTA.	05/30/09	87	08/25/09	08/25/09	0
	Milestone 6 - Complete design and construction of Option D work.	09/28/04	0	09/28/04	09/28/04	0
Physical Percent Complete: Physical completion * as of this reporting period is: 90.76% * Note: Physical completion assessment reflects work completed and work in progress.	Cost Summary: \$ In millions 1. Award Value: 600.45 2. Executed Modifications: 14.09 3. Approved Change Orders: 0.20 4. Current Contract Value (1+2+3): 614.74 5. Incurred Cost: 560.77					

CONTRACT E700051F STATUS

Description: 1st Street Bridge Strengthening Contractor: The Griffith Company	Contract No. E700051F Status as of: November 28, 2008																							
Progress/Work Completed: * Bridge turned over to Metro on October 26, 2007 Areas of Concern: * None	Major Activities (In Progress): * None Major Activities Next Period: * None																							
Schedule Summary: Date of Award: 01/19/07 Notice to Proceed: 02/06/07 Original Contract Duration: 251 CD Current Contract Duration: 281 CD Elapsed Time from NTP: 281 CD	<table border="1" style="width: 100%; border-collapse: collapse;"> <thead> <tr> <th style="width: 15%;"></th> <th style="width: 10%;">Original Contract Dates</th> <th style="width: 10%;">Time Extension</th> <th style="width: 10%;">Current Contract</th> <th style="width: 10%;">Forecast</th> <th style="width: 10%;">Variance CDs</th> </tr> </thead> <tbody> <tr> <td>Notice to Proceed</td> <td>02/06/07</td> <td style="text-align: center;">0</td> <td>02/06/07</td> <td>02/06/07</td> <td style="text-align: center;">0</td> </tr> <tr> <td>Milestone 1 - Substantial Completion</td> <td>10/15/07</td> <td style="text-align: center;">30</td> <td>11/14/07</td> <td>11/14/07</td> <td style="text-align: center;">0</td> </tr> </tbody> </table>							Original Contract Dates	Time Extension	Current Contract	Forecast	Variance CDs	Notice to Proceed	02/06/07	0	02/06/07	02/06/07	0	Milestone 1 - Substantial Completion	10/15/07	30	11/14/07	11/14/07	0
	Original Contract Dates	Time Extension	Current Contract	Forecast	Variance CDs																			
Notice to Proceed	02/06/07	0	02/06/07	02/06/07	0																			
Milestone 1 - Substantial Completion	10/15/07	30	11/14/07	11/14/07	0																			
Physical Percent Complete: Physical completion as of 11/14/07: 100.00% * * As reported by the City of Los Angeles, Department of Contract Administration	<table style="width: 100%;"> <tr> <td style="width: 70%;">Cost Summary:</td> <td style="width: 30%; text-align: right;">\$ In millions</td> </tr> <tr> <td>1. Award Value: *</td> <td style="text-align: right;">4.26</td> </tr> <tr> <td>2. Executed Modifications:</td> <td style="text-align: right;">0.00</td> </tr> <tr> <td>3. Approved Change Orders:</td> <td style="text-align: right;">0.05</td> </tr> <tr> <td>4. Current Contract Value (1+2+3):</td> <td style="text-align: right;">4.31</td> </tr> <tr> <td>5. Incurred Cost:</td> <td style="text-align: right;">4.31</td> </tr> <tr> <td colspan="2" style="padding-top: 20px;">* City of Los Angeles</td> </tr> </table>						Cost Summary:	\$ In millions	1. Award Value: *	4.26	2. Executed Modifications:	0.00	3. Approved Change Orders:	0.05	4. Current Contract Value (1+2+3):	4.31	5. Incurred Cost:	4.31	* City of Los Angeles					
Cost Summary:	\$ In millions																							
1. Award Value: *	4.26																							
2. Executed Modifications:	0.00																							
3. Approved Change Orders:	0.05																							
4. Current Contract Value (1+2+3):	4.31																							
5. Incurred Cost:	4.31																							
* City of Los Angeles																								

CONTRACT P2550 STATUS

Description: 2550 Rail Vehicle Program Contractor: AnsaldoBreda, Italy (AB)		Contract No. P2550 Status as of: November 28, 2008			
Progress/Work Completed: 1. As of November 30th, eleven vehicles have been accepted by MTA and 5 vehicles are undergoing testing for acceptance. 2. Vehicle final assembly work continues in Pittsburg, CA. 3. Shipment of foreign and domestic parts for final assembly continue to arrive in Pittsburg, CA. 4. Several Engineering meetings with AB have been held to evaluate progress and to close open items. 6. Vehicle Nos. 720 and 721 are the next vehicles to be accepted. Areas of Concern: Since Vehicles 706 and 708 have been in revenue service, vehicles have experienced propulsion and low voltage power supply problems. AB Engineers have tested vehicles and interim corrective actions have been implemented. New software revision was tested in October 2008 and final software revision has been implemented on the fleet in November.		Major Activities (In Progress): 1. AnsaldoBreda's manufacturing plants in Pistoia and Naples, Italy continue to prepare carshells and subassemblies for shipment to U.S.A. Pittsburg plant continues vehicle assembly work. 2. Testing of Vehicles720 & 721 is ongoing in Los Angeles for next vehicle acceptance. 3. Weekly project meetings were held to close open items. Major Activities Next Period: 1. Several Technical Progress meetings will be held to emphasize the urgency of resolution of remaining critical items for final acceptance of vehicles. 2. Cars 720 and 721 will continue final testing for Conditional Acceptance in December 2008. 3. Car number 723 and 724 are scheduled to be shipped from Pittsburg to Los Angeles in December.			
Schedule Summary: Date of Award: 04/24/03 Notice to Proceed: 06/06/03 Original Contract Duration: 1442 CD Elapsed Time from NTP: 1938 CD Note: Metro and AnsaldoBreda agreed to Mod No. 11 which extended the Options ordering period from October 2008 to December 31, 2008. A schedule of vehicle delivery has been submitted by AB with 50th (last) car delivered by July 2010.			Quantity	Contract Total Quantity	Balance Due
		Notice to Proceed 6/6/2003A			
		Vehicles Assembled	42	50	8
		LRV at Commissioning Site - Metro	16	50	34
		LRV Accepted for Revenue Service by Metro	11	50	39
Physical Percent Complete: Percent of LRVs assembled = 42/50 = 84% Percent Work Product Invoiced through November 2008 is		Cost Summary: \$ In millions 1. Award Value: Pasadena (Proj. No.: 800151) 126.99 Eastside Ext. (Proj. No.: 800088) 31.75 Total Award Value 158.74 2 Executed Modifications 0.00 3 Approved Change Orders: 0.00 4 Current Contract Value (1 + 2 + 3): 158.74 5 Payments or invoices in process: 83.61			

CONSTRUCTION PHOTOGRAPHS



Traffic signaling installation in Segment 1.



Installation of OCS messenger wire in the guideway along Alameda Street.

CONSTRUCTION PHOTOGRAPHS



View of Traction Power Substation #1 site.

CONSTRUCTION PHOTOGRAPHS



View of Indiana Street improvements and Indiana Station.



Soto Station stairs leading from platform level to mezzanine level.

CONSTRUCTION PHOTOGRAPHS



Architectural finishes being applied at the mezzanine level at Boyle Heights /Mariachi Plaza Station.

APPENDIX

COST AND BUDGET TERMINOLOGY

ESTIMATED PROJECT COSTS: Estimated project costs are based upon the current project cost estimates that are produced during the engineering design phase.

COMMITMENTS: The total of actual contract awards, executed change orders or amendments, approved work orders of Master Cooperative Agreements, offers accepted for purchase of real estate, and other LACMTA actions that will result in specific expenditures at a future time.

INCURRED COST: The total value of work performed to date of services received, and acquired materials or properties.

EXPENDITURES: The total dollar amount of checks written by the LACMTA's Accounting department for contractor or consultant invoices, third party invoices, staff salaries, and closing payments for escrow accounts that is reported in the LACMTA's Financial Information System (FIS).

CONSTRUCTION: Includes guideways, yards and shops, systems equipment, stations, and vehicles.

PROFESSIONAL SERVICES: Includes general engineering, construction management services, consultant design support services during construction, legal counsel, and agency (LACMTA staff) costs.

RIGHT-OF-WAY: Includes real estate appraisals, purchase cost of parcels, easements, right-of-entry permits, escrow fees, and tenant relocation.

UTILITY/AGENCY FORCE ACCOUNT: Includes work by outside agencies and utilities in design coordination and review.

CONTINGENCY: A fund established at the beginning of a project to provide for anticipated but unknown additional costs that may arise during the course of the project.

SPECIAL CONDITIONS: Includes utilities relocation, environmental compliance and mitigation, master cooperative agreements, insurance program, artwork, systems integration testing and pre-revenue operations.

APPENDIX
LIST OF ACRONYMS

AFE	Authorization For Expenditure
ATC	Automatic Train Control
CADD	Computer Aided Drafting and Design
CALTRANS	California Department of Transportation
CD	Calendar Day
CM	Construction Manager
CMAQ	Congestion Mitigation Air Quality
CN	Change Notice
CO	Change Order
CNFGA	Concurrent Non-FFGA Project Activities
CPM	Critical Path Method
CPUC	California Public Utilities Commission
CR	Camera Ready
CTC	California Transportation Commission
CUD	Contract Unit Description
DB	Design/Build
DBB	Design/Bid/Build
DD	Design Development
DOT	Department of Transportation
DWP	Department of Water and Power
EIR	Environmental Impact Report
EIS	Environmental Impact Statement
EPBM	Earth Pressure Balance Machine
ESP	Eastside LRT Partners
FAR	Federal Acquisition Regulation
FD	Final Design
FEIS	Final Environmental Impact Statement
FEIR	Final Environmental Impact Report
FFGA	Full Funding Grant Agreement
FIS	Financial Information System
FSEIR	Final Supplemental Environmental Impact Report
FSEIS	Final Supplemental Environmental Impact Statement
FTA	Federal Transit Administration
FTE	Full Time Equivalent
GDSR	Geotechnical Design Summary Report
IFB	Invitation for Bid
IPO	Integrated Project Office
JV	Joint Venture
LA	Los Angeles
LABOE	Los Angeles Bureau of Engineering
LACFCD	Los Angeles County Flood Control District
LACMTA	Los Angeles County Metropolitan Transportation Authority
LADOT	Los Angeles Department of Transportation

APPENDIX
LIST OF ACRONYMS (Continued)

LADPW	Los Angeles Department of Public Works
LADWP	Los Angeles Department of Water and Power
LAUSD	Los Angeles Unified School District
LNTP	Limited Notice To Proceed
LONP	Letter Of No Prejudice
LRT	Light Rail Transit
LRTP	Long Range Transportation Plan
LRV	Light Rail Vehicle
MIS	Major Investment Study
MPSR	Monthly Project Status Report
N/A	Not Applicable
NEPA	National Environmental Protection Act
NPDES	National Pollution Discharge Elimination System
NTE	Not to Exceed
NTP	Notice To Proceed
OCIP	Owner-Controlled Insurance Program
P3	Primavera Project Planner® (scheduling software)
PC	Project Control
PE	Preliminary Engineering
PEER	Permit Engineering Evaluation Report
PGL	Pasadena Gold Line
PIP	Project Implementation Plan
PM	Project Manager
PMA	Project Management Assistance
PMIP	Project Management Implementation Plan
PMOC	Project Management Oversight Consultant
PMP	Project Management Plan (manual)
P&P	Policies & Procedures
PR	Project Report
PSR	Project Study Report
QA	Quality Assurance
QAR	Quality Assurance Report
QC	Quality Control
QPSR	Quarterly Project Status Report
RAC	Review Advisory Committee
RAG	Rail Activation Group
RFC	Request For Change
RFP	Request For Proposal
ROD	Record Of Decision
ROD	Revenue Operations Date
ROM	Rough Order of Magnitude

APPENDIX
LIST OF ACRONYMS (Continued)

ROW	Right-Of-Way
SCAQMD	Southern California Air Quality Management District
SCE	Southern California Edison
SCRRA	Southern California Regional Rail Authority
SHA	State Highway Account
SHPO	State Historic Preservation Office
SIT	System Integration Testing
SOV	Schedule Of Value
SOW	Statement Of Work
SP	Special Provision
STIP	State Transportation Improvement Program
STP	Surface Transportation Program
TBD	To Be Determined
TBM	Tunnel Boring Machine
TCRP	Traffic Congestion Relief Program
TPSS	Traction Power Substation
TRACS	Transit Automatic Control System
UFS	Universal Fare System
USDOT	U.S. Department Of Transportation
VE	Value Engineering
WBS	Work Breakdown Structure
WP	Work Package