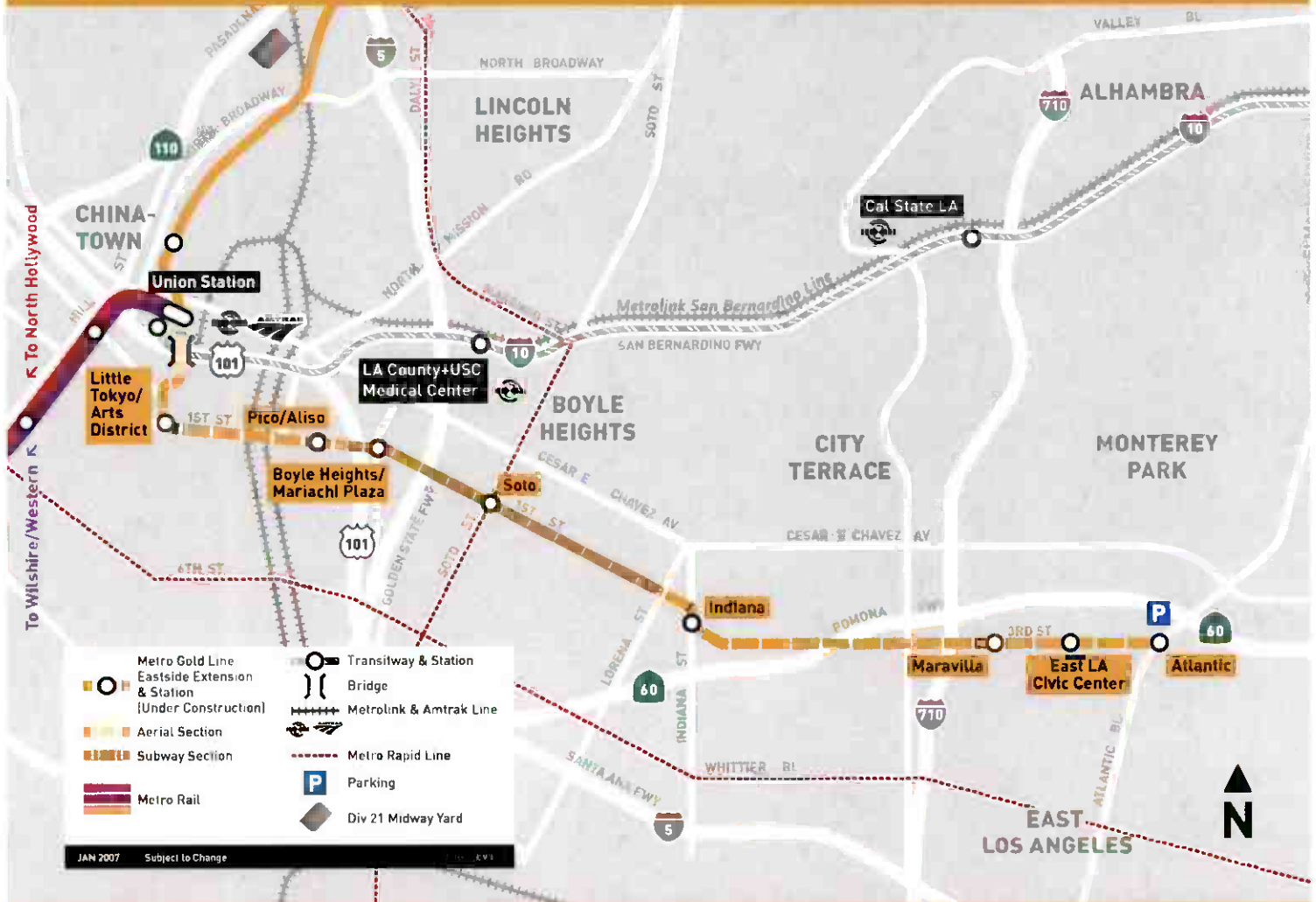


April 2009

Metro Gold Line Eastside Extension



METRO GOLD LINE EASTSIDE EXTENSION

MONTHLY PROJECT STATUS REPORT

THE PREPARATION OF THIS DOCUMENT HAS BEEN FINANCED IN PART THROUGH A GRANT FROM THE U. S. DEPARTMENT OF TRANSPORTATION, FEDERAL TRANSIT ADMINISTRATION (FTA), UNDER THE FEDERAL TRANSIT ACT OF 1964, AS AMENDED, AND FUNDS FROM THE STATE OF CALIFORNIA.

APRIL 2009

TABLE OF CONTENTS

	Page No.
Project Overview & Status.....	1-4
Management Issues.....	4
Project Status	
• Project Scope.....	5
• Schedule	
○ Key Milestones Six-Month Lookahead	6
○ Project Master Schedule Critical Path.....	7-13
○ Critical Path Narrative.....	14
• Project Cost Status.....	15-16
• Financial/Grant Status.....	17-18
• Staffing.....	19-21
• Real Estate.....	22
• Environmental.....	23
• Community Relations.....	23
• Quality Assurance.....	24
• Safety.....	24
• Art Development.....	24
• Third Party.....	25-26
• CPUC Crossing.....	27
Contract C0802 Status	28
Contract C0803 Status	29
Contract E700051F Status.....	30
Contract C0893 Status	31
Contract P2550 Status	32
Construction Photographs	33-36
Appendices.....	37-40

PROJECT OVERVIEW & STATUS

The Metro Gold Line Eastside Extension Project is a six-mile, dual track light rail system with eight new stations and one station modification. The system originates at Union Station in downtown Los Angeles, where it connects with the Pasadena Gold Line, traveling generally east to Pomona and Atlantic Boulevards. The system travels over the State Route 101 Freeway and traverses the existing 1st Street Bridge over the Los Angeles River. The system travels south on Alameda Street and then east on 1st Street with two stations at Alameda and Utah Streets. East of the Los Angeles River and 1st and Utah Streets, the alignment transitions to tunnel for approximately 1.7 miles, and continues beneath 1st Street to underground stations at 1st Street and Boyle Avenue and 1st Street and Soto Street. The alignment returns to the surface near the intersection of 1st Street and Lorena Streets, then jogs to the south, transitioning to follow 3rd Street with stations at Indiana Street, Ford Boulevard, Mednik Avenue and Pomona and Atlantic Boulevards.

Metro's consultant, ARINC, continued with integration of the new software for the expansion of the existing SCADA system. The majority of the custom design of the new software has been completed, and the initial download into the SCADA system was successfully completed this period. Preparation of the cutover plan continued as well as development of the user and training manuals. The consultant is awaiting the final SCADA points database from the C0803 contractor to update the new software. Fabrication of hardware and workstations is near complete. The first two workstations necessary to begin systems integration testing were installed at ROCC and preliminary testing using the fiber optics grid began.

The C0893 Atlantic/Pomona Parking Structure contractor, W. M. Klorman Corporation, continued with final design. This period the contractor submitted 100% design drawings for Metro's review. Metro completed review of the 75% structural and plumbing design drawings, and returned comments to the contractor. Also, the contractor submitted several miscellaneous contract submittals for Metro's review and approval.

The Division 21 Body Shop design consultant, Eastside LRT Partners, continued development of the 100% design package and final performance specifications. Metro completed review of the 70% design and performance specifications package, and returned comments to the consultant.

The C0803 contractor completed tensioning and regulating the overhead catenary system in the tunnels. Construction crews completed installing radio equipment and cable in the tunnels and cross passages, and set sump pumps at cross passages 2 and 5. Wire terminations in the cross passages cabinets continued this period and final cleanup in the tunnels has been completed.

At the Boyle Heights/Mariachi Plaza Station (MPS), the escalator/elevator supplier crews continued installation of elevators cabs, began mounting glass panels and performed the final adjustments. Also, escalator installation continued with placement of motors and performing the final adjustments. Door frames and door installation began this period throughout the station. Installation of exposed conduit, wiring and terminations for emergency fans and track dampers were completed and erection of sound attenuators continued. Erection of the ceiling grid and panels is near completion at the platform, mezzanine and mid-landing levels, as well as casting color concrete floors, dry packing floors and tile installation throughout the station

PROJECT OVERVIEW & STATUS

Placement of lighting fixtures, speakers and VMS signs completed as well as the erection of edge lights framing and supports. At the mezzanine level, construction crews completed erecting guardrail and continued hanging art pieces. In the Train Control and Communication (TC&C) room, as well as in the Auxiliary Power (AP) rooms, the systems subcontractor continued connecting all wiring inside the Communication Interface Cabinets (CIC). At the station plaza area, installation of conduit for lighting and irrigation was completed.

At the Soto Station (SS), placement of platform and mezzanine level ceiling grids and panels is near completion. At the mezzanine level and station entrance, placement of floor dry packing, and wall and floor tile installation continued. Construction crews completed placement of lighting fixtures, speakers and VMS signs at the track level as well as installation of edge lights framing and supports. Door frames and door installation began this period throughout the station and the platform warning edge strips were placed. Installation of exposed conduit, wiring and terminations for emergency fans and track dampers were completed. In the TC&C and AP rooms, field crews continued pulling cable and terminating wire connections at the CIC. The escalator/elevator supplier crew installed escalators 1A and 1B, and continued installation of elevators cabs. The mechanical subcontractor crews completed installation of track dampers and continued erection of sound attenuators.

At the West Portal (WP), field crews completed installation of booster fan brackets and supports and erected the remaining three fans. All conduit and wiring connections were completed as well.

At the East Portal (EP), the systems subcontractor completed pulling cable and wire into the electrical and mechanical rooms and began connecting wire terminations. The mechanical subcontractor crews installed brackets and supports for booster fans and erected all four fans.

At-grade construction is proceeding according to plan. At Union Station (US) and the 101 Freeway Bridge Overcrossing, field crews completed regulating the catenary system. Street restoration continued this period along Alameda Street and 1st Street. On the east side of Alameda Street (Segment 1), sidewalk concrete pours began as well as erection of historical light poles. Curb and gutter and sidewalks were poured at the Ducommun cul-de-sac. Along 1st Street between Alameda Street and the West Portal (Segments 2A and 2B), field crews completed pavement grinding, placed street asphalt and poured mountable curbs. The systems subcontractor completed installation of traffic lights and loops at all intersections and Los Angeles City crews applied final striping paint.

Street restoration along 1st Street, between Lorena and Indiana Streets and along Indiana Street, between 1st and 3rd Streets (Segments 4A and 4B) was completed. Field crews completed pavement grinding, placed street asphalt and poured mountable curbs. The systems subcontractor completed installation of traffic lights and loops at all intersections and Los Angeles City crews applied final striping paint. At the TPS-03 site, at the intersection of 1st and Lorena Streets, the systems subcontractor completed commissioning of the substation.

PROJECT OVERVIEW & STATUS

Construction along 3rd Street (Segments 5, 6 and 7) is near completion. Field crews continued final punch list work in preparation for custody and control turnover to Los Angeles County.

In other areas of the alignment, at-grade station construction is continuing. The following work items were installed at all at-grade stations: benches, trash cans, signs, standalone ticket scanners and fire alarms. Field crews installed pedestrian walkway guardrails at Indiana, Maravilla and East Los Angeles Civic Center (ELACC) stations. The canopy subcontractor completed metal roofing cladding at the Pico/Aliso and ELACC stations. Landscaping began at Pico/Aliso, Indiana, ELACC and Atlantic stations.

The testing phase of the project continues. The contractor continued local circuit and control testing of ventilation equipment, auxiliary power transformers, CIC and MCC at the underground stations. The Local Field Acceptance Testing (LFAT) for power, train control and communications equipment also continued this period. Along the Los Angeles City portion of the alignment, the OCS measurement and visual tests, as well as pantograph clearance tests were completed. The latter tests are currently being performed in the tunnels. Radio LFAT continued this period in the tunnels, cross passages and underground stations. The systems subcontractor began the Systems Integration Testing phase. Preliminary testing for test I-020, cable transmission system, was performed. The test data of the fiber optic signal strength to ROCC was collected and analyzed.

The C0893 Atlantic/Pomona Parking Structure contractor prepared the excavation and support system submittal and began preparations to excavate and exposed the sewer line that must be protected during construction.

Installation of the Universal Fare System (UFS) equipment began this period by Robnett Electric, Inc., a subcontractor to the equipment vendor, Cubic, Inc. All Standalone Validators (SAV) have been placed at all aboveground stations. Ticket Vending Machines (TVM) at Maravilla and East Los Angeles Civic Center stations were placed as well. The subcontractor is coordinating with ELRTC for access to the TC&C rooms at all stations for installation of UFS cabinets and wiring to the power junction boxes.

The Metro Art Department continued providing technical support and coordination between the C0803 contractor and the artists responsible to provide art pieces for the eight stations. Fabrication of art pieces is nearing completion and shipments to the site of completed pieces are continuing. A number of art pieces have been installed at the following stations: Soto, Boyle Heights/Mariachi Plaza, Indiana and Maravilla.

The Metro Rail Activation Group began setting up equipment and selecting personnel to implement the Red Tag Procedure in anticipation of the start of Pre-Revenue Operations next month. The Group continued identifying all the requirements necessary to obtain the Certificate of Occupancy. The group began testing at the ROCC. The training program for operators is continuing. The group led and successfully carried out two emergency readiness

PROJECT OVERVIEW & STATUS

drills this period: D-003 – traction power substation fire - and D-004 - train derailment with injuries on the street. Rail activation coordination meetings with the contractor have continued on a weekly basis.

MANAGEMENT ISSUES

No Management Issues for the period ending April 2009.

PROJECT SCOPE

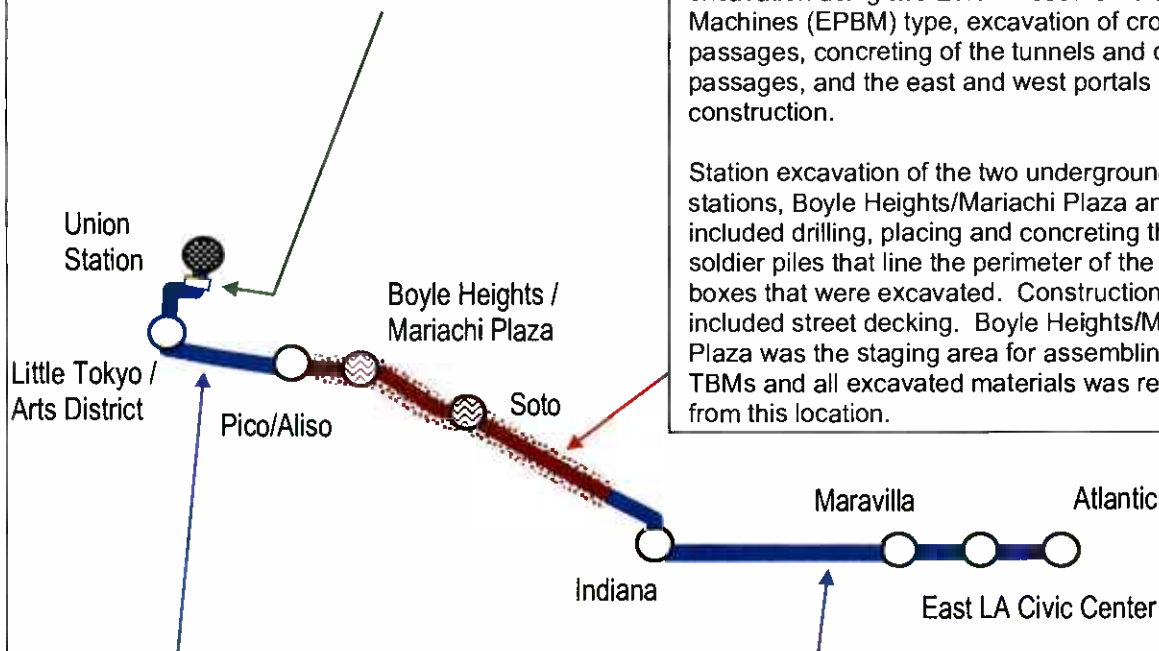
Contract C0802 – 101 Freeway Bridge

Overcrossing: The construction of the bridge was combined with Caltrans freeway improvements project. Caltrans administered the construction and the LACMTA provided oversight and was responsible for the construction costs of the bridge overcrossing.

Contract C0803 - Tunnel and Station

Excavation (Design/Bid/Build): Construction of the 1.7 mile tunnel segment included tunnel excavation using two Earth Pressure Balance Machines (EPBM) type, excavation of cross passages, concreting of the tunnels and cross passages, and the east and west portals construction.

Station excavation of the two underground stations, Boyle Heights/Mariachi Plaza and Soto, included drilling, placing and concreting the soldier piles that line the perimeter of the station boxes that were excavated. Construction also included street decking. Boyle Heights/Mariachi Plaza was the staging area for assembling the TBMs and all excavated materials was removed from this location.



Contract C0803 - Stations, Trackwork, and Systems (Design/Build): Construction of the two underground stations includes structural walls, station platforms, mezzanines, station entrances, and plazas, architectural finishes and all related mechanical and electrical work.

Construction of the six-mile alignment includes six at-grade stations, trackwork installation and testing for the entire alignment.

Systems installation and testing is inclusive of power systems, automatic train control, fire and emergency management, TRACS and communications systems. The contractor will be responsible for systems integration testing for the entire line segment prior to pre-revenue operations.

**Metro Gold Line Eastside Extension
Monthly Project Status Report**

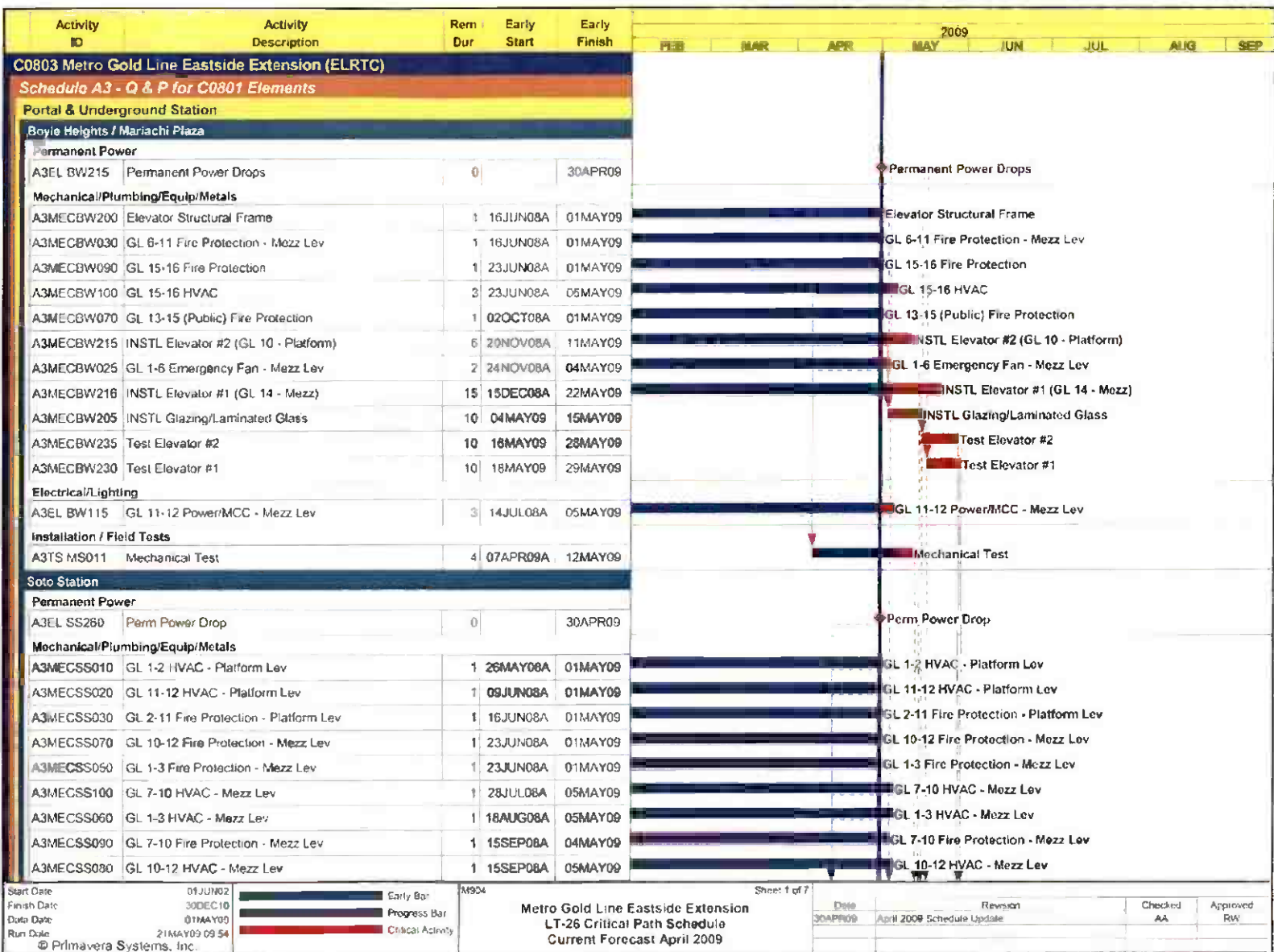
April 2009

KEY MILESTONE SCHEDULE SIX-MONTH LOOKAHEAD

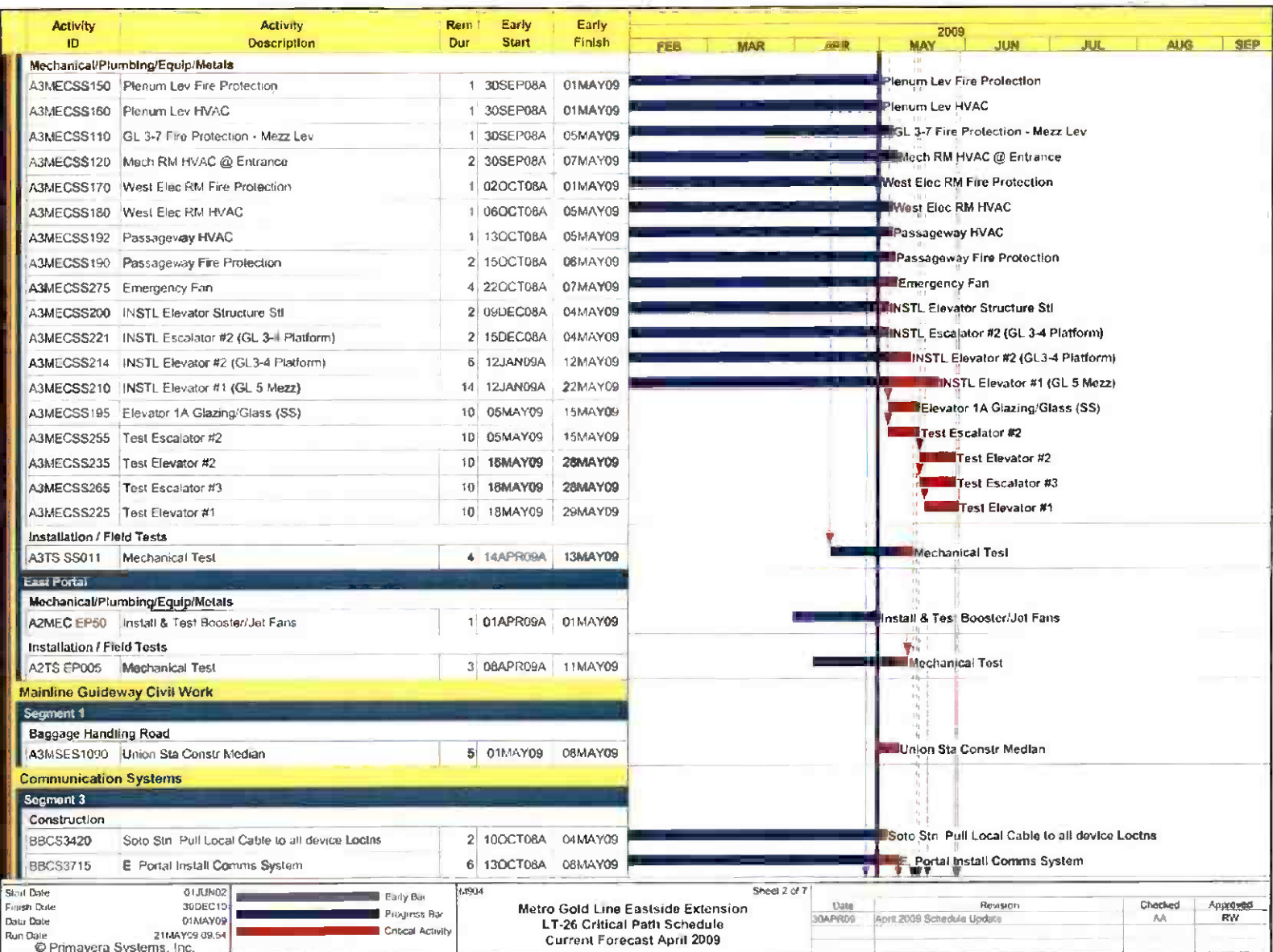
	Milestone Date	Apr-09	May-09	Jun-09	Jul-09	Aug-09	Sep-09
Completed 34.5KV Feeder Cable Installation	04/10/09	○					
Completed CCS Installation Throughout the Alignment	04/24/09 *	○					
Started Systems Integration Testing Phase II (Metro)	04/27/09 *	◆					
Completed Street Improvements Throughout the Alignment	04/30/09 *	○					
Complete Radio System Installation	05/06/09 *		○				
Submit All Testing Procedures	05/06/09 *		○				
Overhead Catenary Energized End to End	05/06/09 *		○				
Complete Landscape at Both Portals	05/06/09 *		○				
Install Tunnel Portal Surveillance System	05/07/09 *		○				
Complete First Station Construction - Indiana	05/15/09 *		○				
Begin Pre-Revenue Operations	05/16/09 *		◆				
Complete Fabrication and Delivery of Metro Art	05/29/09 *		◆				
Metro Submit to the CPUC Application to Obtain the Certificate of Occupancy	06/01/09			◆			
C0803 Contractor Achieve Substantial Completion	06/03/09 *			○			
Complete At-Grade Stations Canopy Installation	06/15/09 *			○			
Install Universal Fare System Throughout the Alignment	06/19/09 *			◆			
Line Ready for Revenue Operations (ROD) - Planned	06/27/09 *			◆			
Advertise Contract C0933 LRV Body Shop at Division 21	07/13/09				◆		
Metro SCADA Contractor Complete Installation of New Expanded System	07/21/09 *				◆		
C0803 Contractor Complete Demobilization and Vacate Site (Milestone #5)	08/30/09					○	
Award Contract C0933 LRV Body Shop at Division 21	09/23/09						◆
<div> <div>◆ LACMTA Staff Milestone</div> <div>○ Eastside LRT Constructors</div> <div>FTA</div> <div>FTA Approval</div> </div> <div> <div>△ Other Agencies</div> <div>* New Date</div> <div>M Metro</div> <div>LACMTA Board Approval</div> </div>							

Six-month lookahead schedule for Contract C0803 reflects the contractor's current CPM schedule.

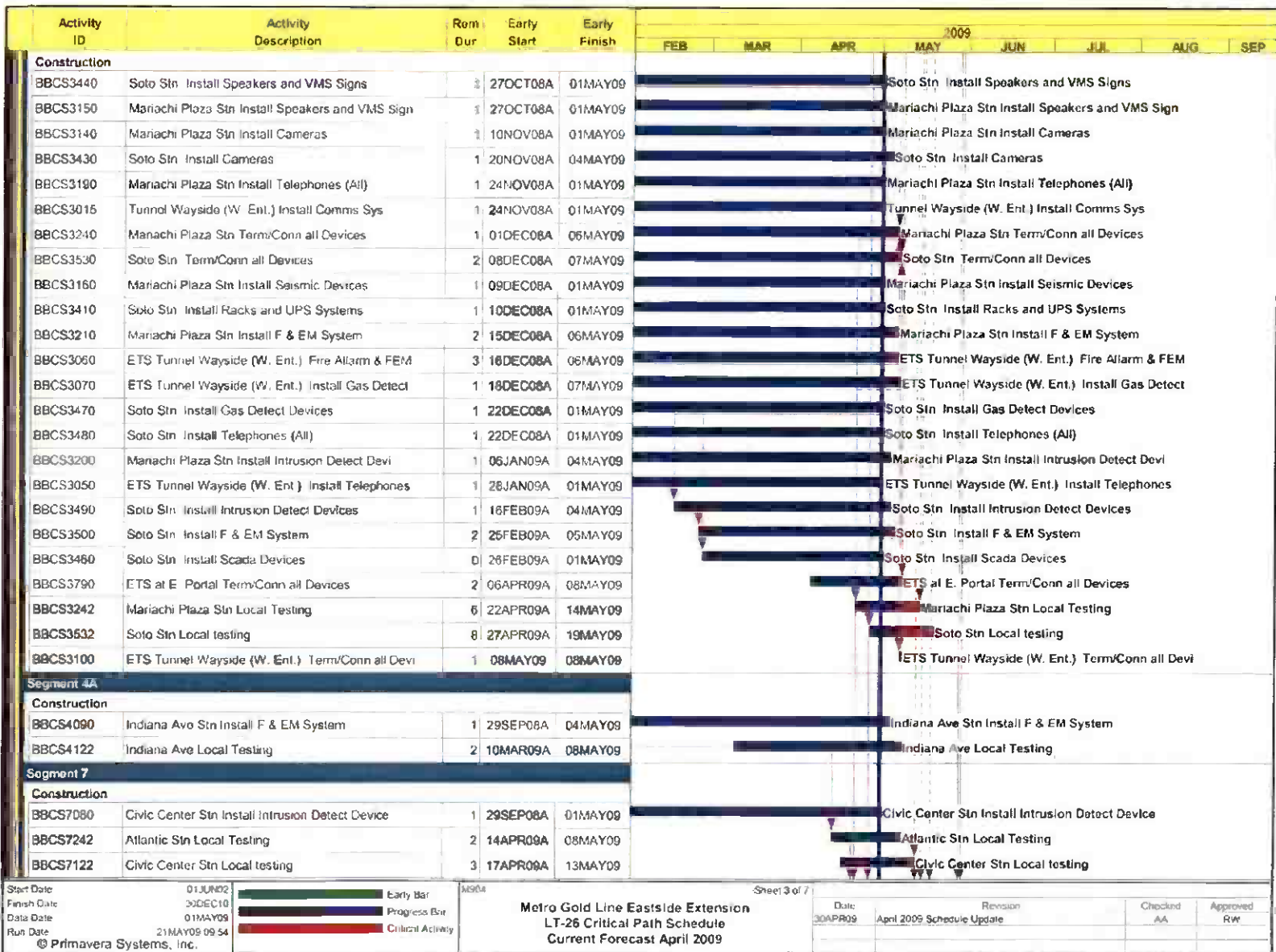
PROJECT MASTER SCHEDULE
CRITICAL PATH (1 of 7)



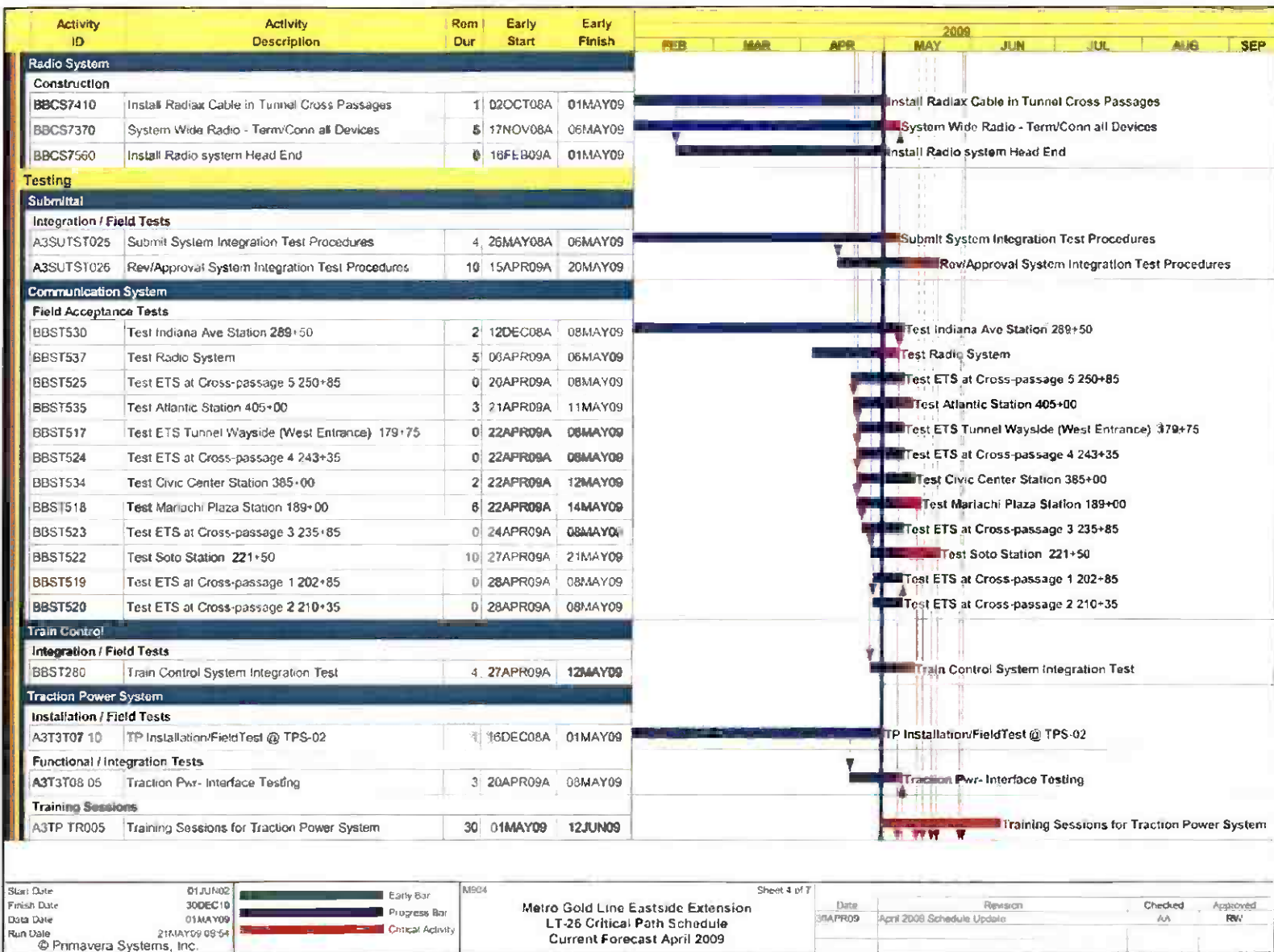
PROJECT MASTER SCHEDULE CRITICAL PATH (2 of 7)



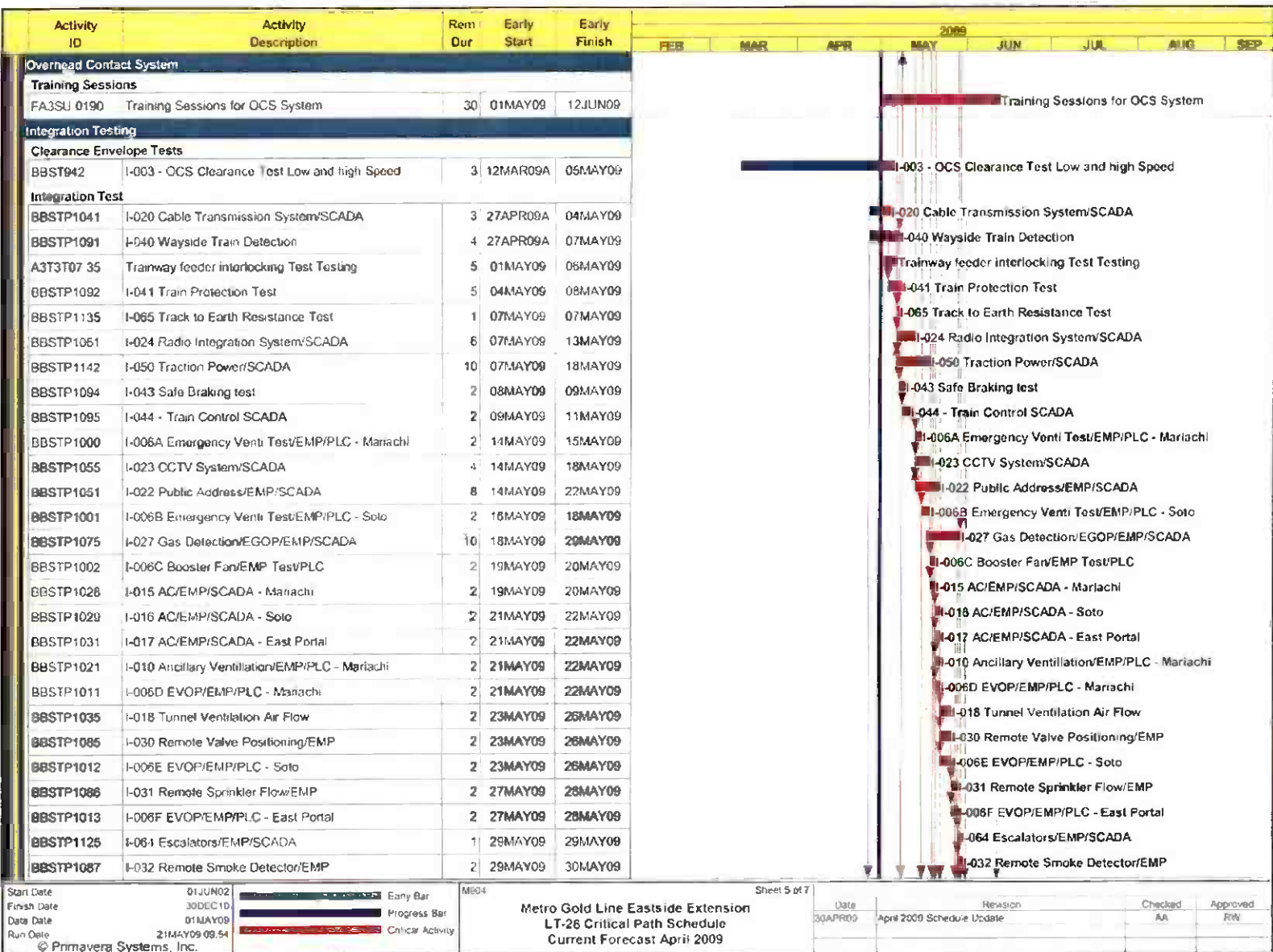
**PROJECT MASTER SCHEDULE
CRITICAL PATH (3 of 7)**



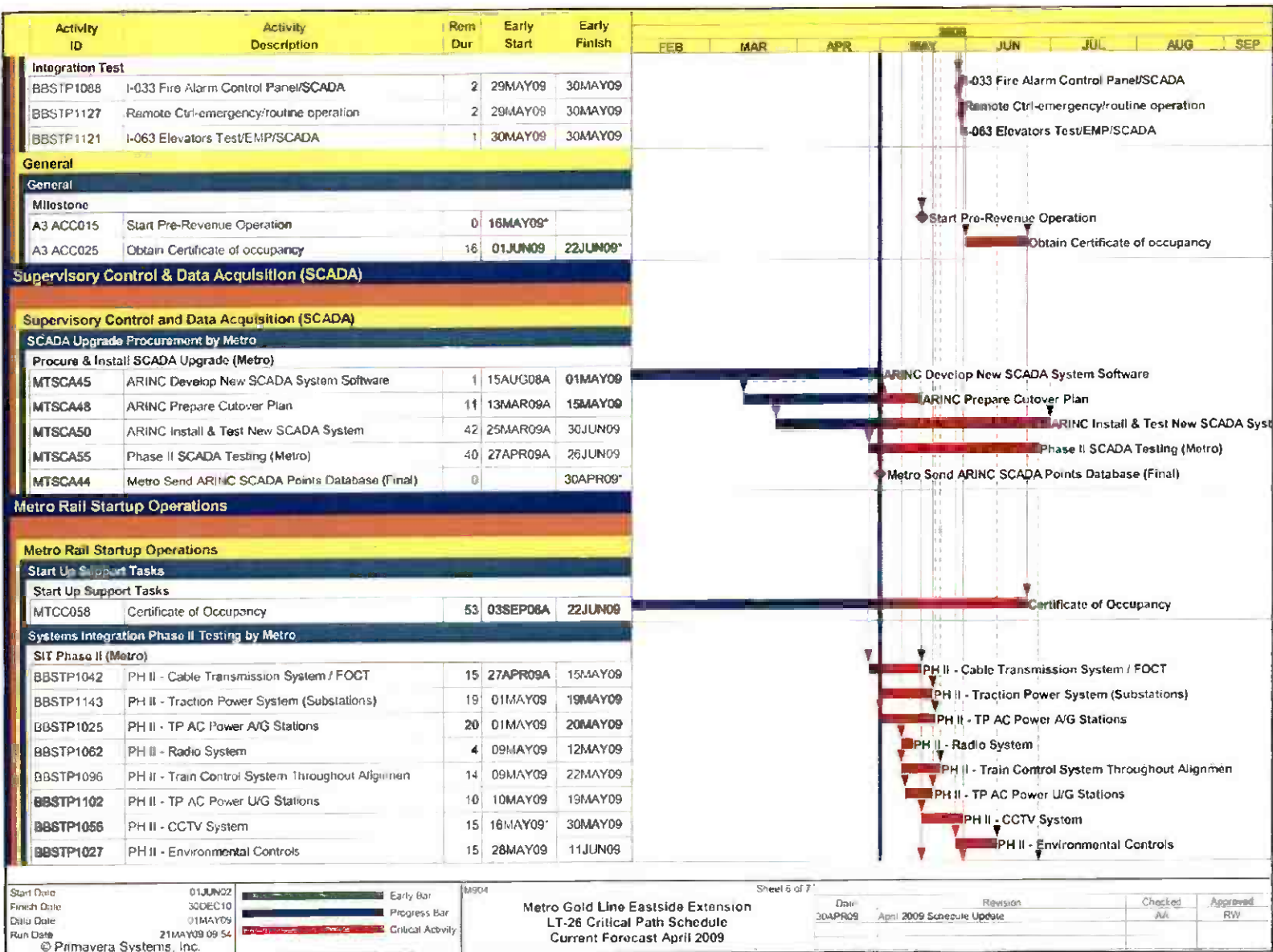
PROJECT MASTER SCHEDULE
CRITICAL PATH (4 of 7)



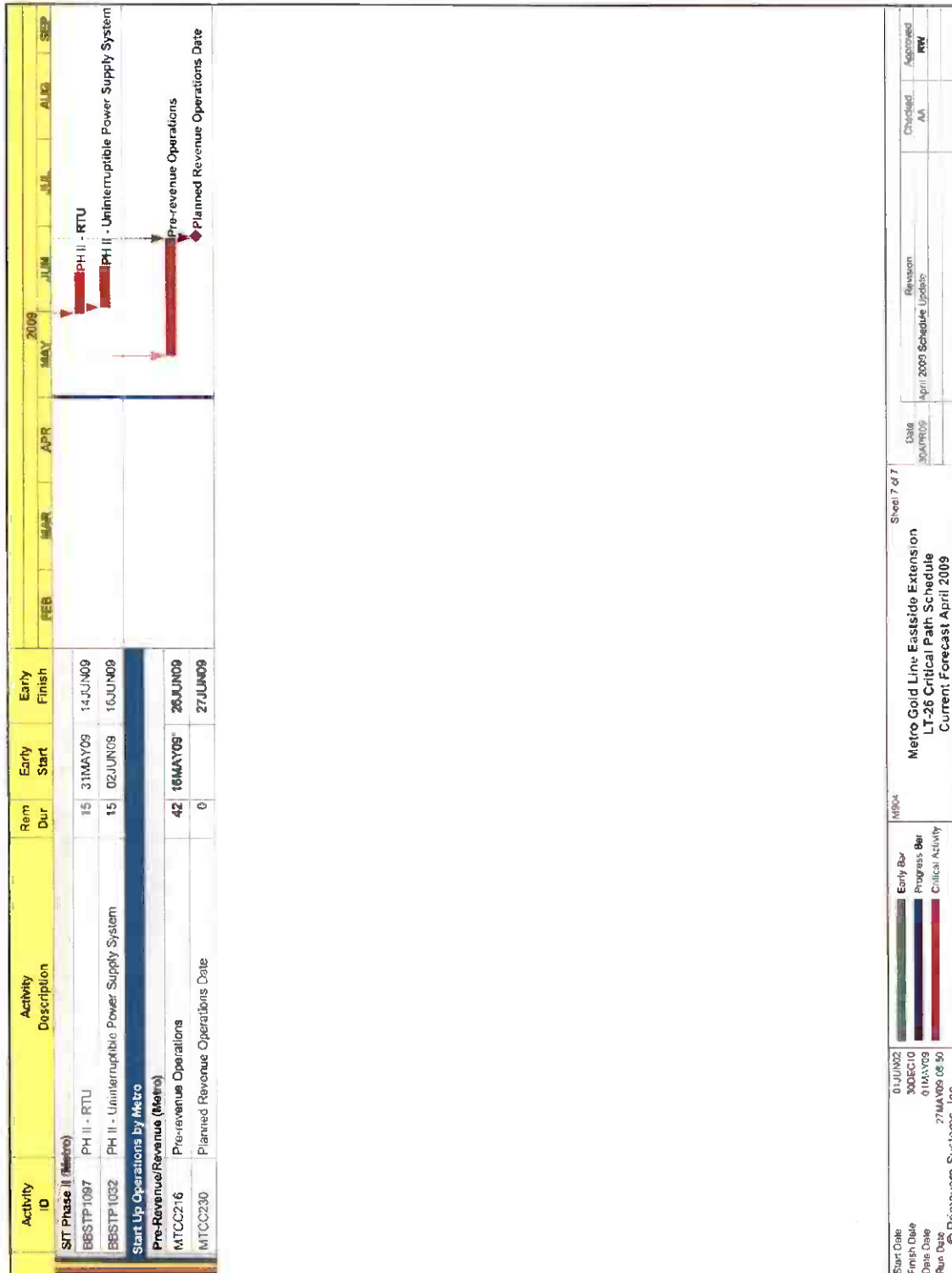
PROJECT MASTER SCHEDULE
CRITICAL PATH (5 of 7)



PROJECT MASTER SCHEDULE
CRITICAL PATH (6 of 7)



PROJECT MASTER SCHEDULE CRITICAL PATH (7 of 7)



CRITICAL PATH NARRATIVE

Current Critical Path Analysis

The C0803 contractor (ELRTC) is nearly complete with the installation of the ventilation system at the Boyle Heights/Mariachi Plaza and Soto Stations, and the portals. Installation of the booster fans were completed at the West Portal and installation began at the East Portal. The systems subcontractor continued wiring all ventilation equipment and installing exposed conduit, cable splicing and wire terminations at the Train and Communication Control (T&CC), auxiliary power, emergency fans, mechanical and electrical rooms. All Traction Power Substations (TPS) are now energized. The Overhead Catenary System (OCS) has been completed and the OCS portion in the Los Angeles City side was energized this period, which allowed testing of the light rail vehicles at low speeds. The systems subcontractor is continuing with the local field acceptance test program throughout the alignment. Also, ELRTC began Systems Integration Testing (SIT) Phase I, which is the contractor's responsibility.

ELRTC has shifted priorities to complete a series of intermediate milestones necessary to support a May start of Pre-Revenue Operations. As a result, the contractor may finish non-critical SIT as well as non-critical station finishes and canopy work during Pre-Revenue Operations. The contractor is continuing mitigation measures with subcontractors to maintain longer shift hours and has continued revising the testing schedule.

There are several parallel critical paths in the current schedule. One is through completion of underground stations. Another is through installation and testing of the ventilation system in the underground section. One more is the communications installation at both underground stations, and installation of communications throughout the alignment. Local facilities tests are the last stage of the critical path prior to entering the final test stage, where Systems Integration Testing and Pre-Revenue Operations are conducted.

PROJECT COST STATUS

COST REPORT BY ELEMENT ORIGINAL SCOPE ACTIVITIES

DOLLARS IN THOUSANDS

ELEM- MENT	DESCRIPTION	ORIGINAL BUDGET	CURRENT BUDGET		COMMITMENTS		EXPENDITURES		CURRENT FORECAST		BUDGET / FORECAST VARIANCE
			PERIOD	TO DATE	PERIOD	TO DATE	PERIOD	TO DATE	PERIOD	TO DATE	
C	CONSTRUCTION	633,221	-	650,702	119	658,112	5,113	602,430	-	650,702	-
S	SPECIAL CONDITIONS	19,494	-	57,032	-	50,707	242	39,580	-	57,032	-
R	RIGHT-OF-WAY	40,358	-	37,681	-	37,779	-	37,048	-	37,681	-
P	PROFESSIONAL SERVICES	135,304	-	135,860	19	134,715	925	125,740	-	135,860	-
PC	PROJECT CONTINGENCY	60,254	-	7,401	-	-	-	-	-	7,401	-
PR	PROJECT REVENUE	(4,617)	-	(4,662)	-	(4,662)	-	(4,662)	-	(4,662)	-
SUBTOTAL		884,014	-	884,014	138	876,651	6,280	800,137	-	884,014	-
PF	PROJECT FINANCE COST	14,800	-	14,800	(65)	6,959	(65)	6,959	-	14,800	-
TOTAL		898,814	-	898,814	74	883,610	6,215	807,096	-	898,814	-

NOTE: EXPENDITURES ARE CUMULATIVE THROUGH MARCH 2009

PROJECT COST ANALYSIS

Original Budget

The Full Funding Grant Agreement (FFGA) was adopted June 1, 2004 in the amount of \$898.8 million. The Original Budget reflects the adopted FFGA.

Current Budget and Current Forecast

The Current Budget and Forecast remain the same at \$898.8 million.

Commitments

The Commitments increased by \$0.1 million this period primarily due to executed modifications associated with Contract C0803 –Tunnel, Stations, Trackwork and Systems. The \$883.6 million in Commitments to date represents 98.3% of the Original Budget.

Expenditures

Expenditures are cumulative through March 2009. The Expenditures increased by a total of \$6.2 million this period. In the Construction element there was an increase of \$5.1 million due to costs associated with Contract C0803 -Tunnel, Stations, Trackwork and Systems. In the Special Conditions element there was an increase of \$0.2 million primarily for costs associated with the Metro Systems Integration Oversight/Pre-Rev Ops and Metro Art Program. In the Professional Services element there was an increase of \$0.9 million primarily for costs associated with Metro Project Administration, Design Support During Construction and Construction Management Services. In the Project Finance Cost element there was a decrease of \$0.1 million that reflects interest income received. The March 2009 invoice for Contract C0803 in the amount of \$7.3 million was posted in the Metro's Financial Information System (FIS) on April 6, 2009 and will be reflected in the next reporting period. The \$807.1 million in Expenditures to date represents 89.8% of the Original Budget.

PROJECT COST STATUS

COST REPORT BY ELEMENT CONCURRENT NON-FFGA PROJECT ACTIVITIES DOLLARS IN THOUSANDS

ELEM- MENT	DESCRIPTION	ORIGINAL BUDGET	CURRENT BUDGET		COMMITMENTS		EXPENDITURES		CURRENT FORECAST		BUDGET / FORECAST VARIANCE
			PERIOD	TO DATE	PERIOD	TO DATE	PERIOD	TO DATE	PERIOD	TO DATE	
C	CONSTRUCTION	18,000	-	46,034	639	44,920	628	30,435	-	46,034	-
S	SPECIAL CONDITIONS	-	-	3,244	-	2,604	1	2,325	-	3,244	-
R	RIGHT-OF-WAY	-	-	648	-	-	-	-	-	648	-
P	PROFESSIONAL SERVICES	-	-	3,914	-	3,399	137	1,904	-	3,914	-
PC	PROJECT CONTINGENCY	-	-	1,650	-	-	-	-	-	1,650	-
PR	PROJECT REVENUE	-	-	(4,087)	-	(5,096)	-	(279)	-	(4,087)	-
SUBTOTAL		18,000	-	51,403	639	45,827	765	34,385	-	51,403	-
PF	PROJECT FINANCE COST	-	-	-	-	-	-	-	-	-	-
TOTAL		18,000	-	51,403	639	45,827	765	34,385	-	51,403	-

NOTE: EXPENDITURES ARE CUMULATIVE THROUGH MARCH 2009

PROJECT COST ANALYSIS

Original Budget

The Metro Board adopted the Original Budget of \$18.0 million on March 24, 2005.

Current Budget and Current Forecast

The Current Budget and Forecast remain the same at \$51.4 million.

Commitments

The Commitments increased by \$0.6 million this period primarily due to the requirement of photo enforcement. The \$45.8 million in Commitments to date represents 89.2% of the Current Budget.

Expenditures

Expenditures are cumulative through March 2009. The Expenditures increased by \$0.8 million this period primarily for costs associated with work requested by the City of Los Angeles for historic street lighting, construction of the parking structure, Metro Project Administration, and Community Relations. The March 2009 invoice for Contract C0803 in the amount of \$0.1 million was posted in the Metro's Financial Information System (FIS) on April 6, 2009 and will be reflected in the next reporting period. The \$34.4 million in Expenditures to date represents 66.9% of the Current Budget.

**Metro Gold Line Eastside Extension
Monthly Project Status Report**

April 2009

FINANCIAL/GRANT STATUS – ORIGINAL SCOPE ACTIVITIES

APRIL 2009

STATUS OF FUNDS BY SOURCE

SOURCE	(A) ORIGINAL BUDGET	(B) TOTAL FUNDS ANTICIPATED	(C) TOTAL FUNDS AVAILABLE	(D) COMMITMENTS \$	(D/B) %	(E) EXPENDITURES \$	(E/B) %	(F) BILLED TO FUNDING SOURCE \$	(F/B) %
FEDERAL - SECTION 5309 NEW START	\$490,700	\$490,700	\$366,976	\$485,779	99%	\$413,137	84% (1)	\$413,137	84%
FED - SECTION 5309 FIXED GUIDEWAY	\$23,100	\$12,000	\$12,000	\$12,000	100%	\$12,000	100%	\$12,000	100%
FEDERAL - CMAQ	\$10,300	\$10,300	\$10,276	\$10,276	100%	\$10,276	100%	\$10,276	100%
REGIONAL IMPROVEMENT PROG - FED	\$179,600	\$4,600	\$4,600	\$4,600	100%	\$4,600	100%	\$4,600	100%
REGIONAL IMP PROG - STATE	\$0,600	\$175,600	\$175,600	\$175,600	100%	\$175,600	100%	\$175,600	100%
STATE TCRP	\$45,000	\$45,000	\$45,000	\$45,000	100%	\$45,000	100%	\$45,000	100%
PROP A 35% / PROP C 40%/PROP 25%	\$124,614	\$135,714	\$133,296	\$133,296	98%	\$129,424	95%	\$126,663	93%
LEASE REVENUES	\$10,100	\$10,100	\$10,100	\$10,100	100%	\$10,100	100%	\$10,100	100%
ACCRUALS									
SUB-TOTAL	\$884,014	\$884,014	\$757,848	\$876,651	99%	\$800,137	91%	\$797,376	90%
PROP A / PROP C (INTEREST COST)	\$14,800	\$14,800	\$6,959	\$6,959	47%	\$6,959	47%	\$4,523	31%
TOTAL	\$898,814	\$898,814	\$764,807	\$883,610	98%	\$807,096	90%	\$801,899	89%

NOTE: EXPENDITURES ARE CUMULATIVE THROUGH MARCH 2009.

(1) BILLED EXPENDITURES IN EXCESS OF FUNDS AVAILABILITY ARE TEMPORARILY FUNDED THROUGH BRIDGE FINANCING.

STATUS OF FUNDS ANTICIPATED

FEDERAL SECTION 5309 NEW STARTS: LACMTA has received an appropriation of \$333.6M through FY08. LACMTA submitted a grant application for \$33.4M in January 2009. The grant was approved on April 1, 2009. Funds are available for drawdown.

FINANCIAL/GRANT STATUS
CONCURRENT NON-FFGA PROJECT ACTIVITIES

APRIL 2009

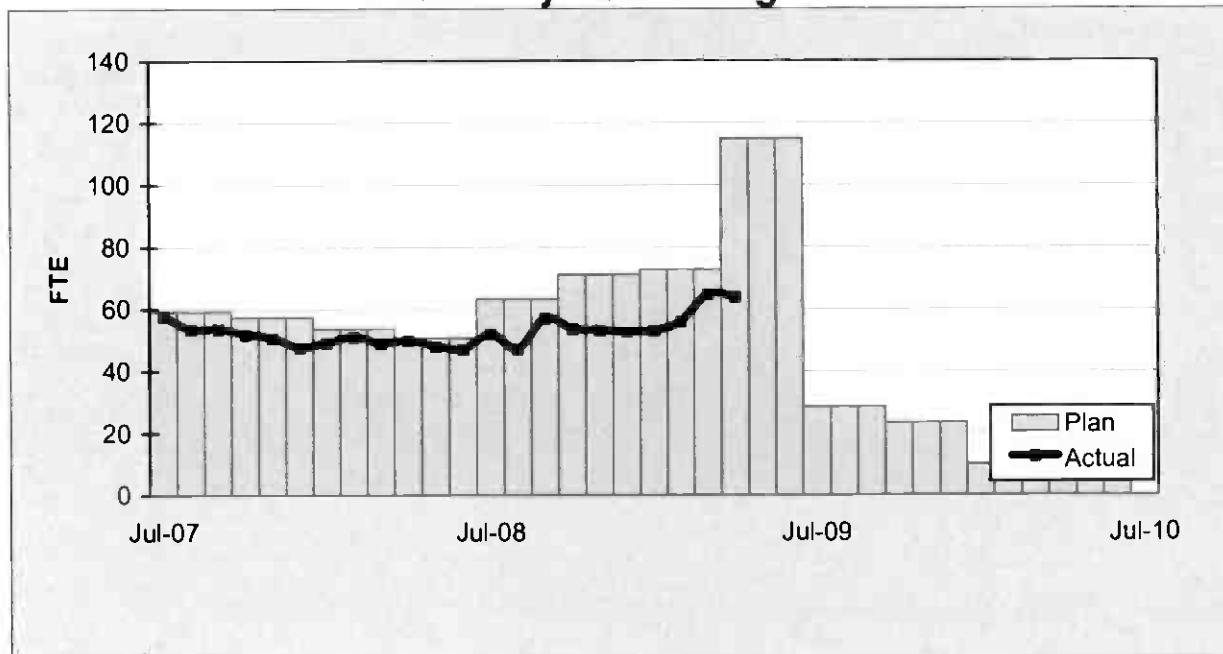
STATUS OF FUNDS BY SOURCE

SOURCE	(A) APPROVED BUDGET	(B) TOTAL FUNDS ANTICIPATED (1)	(C) TOTAL FUNDS AVAILABLE	(D) COMMITMENTS \$	(D/B) %	(E) EXPENDITURES \$	(E/B) %	(F) BILLED TO FUNDING SOURCE \$	(F/B) %
PROP C 40%	\$14,000	\$22,400	\$20,243	\$20,243	90%	\$10,301	46%	\$5,459	24%
PROP C 10%	\$4,000	\$4,300	\$4,300	\$1,498		\$0,001		\$0,001	
STATE TCR	\$0,000	\$24,086	\$24,086	\$24,086	100%	\$24,083	100%	\$24,083	100%
STATE TSA	\$0,000	\$0,617	\$0,617	\$0,000	0%	\$0,000	0%	\$0,000	0%
TOTAL	\$18,000	\$51,403	\$49,246	\$45,827	89%	\$34,385	67%	\$29,543	57%

NOTE: EXPENDITURES ARE CUMULATIVE THROUGH MARCH 2009.

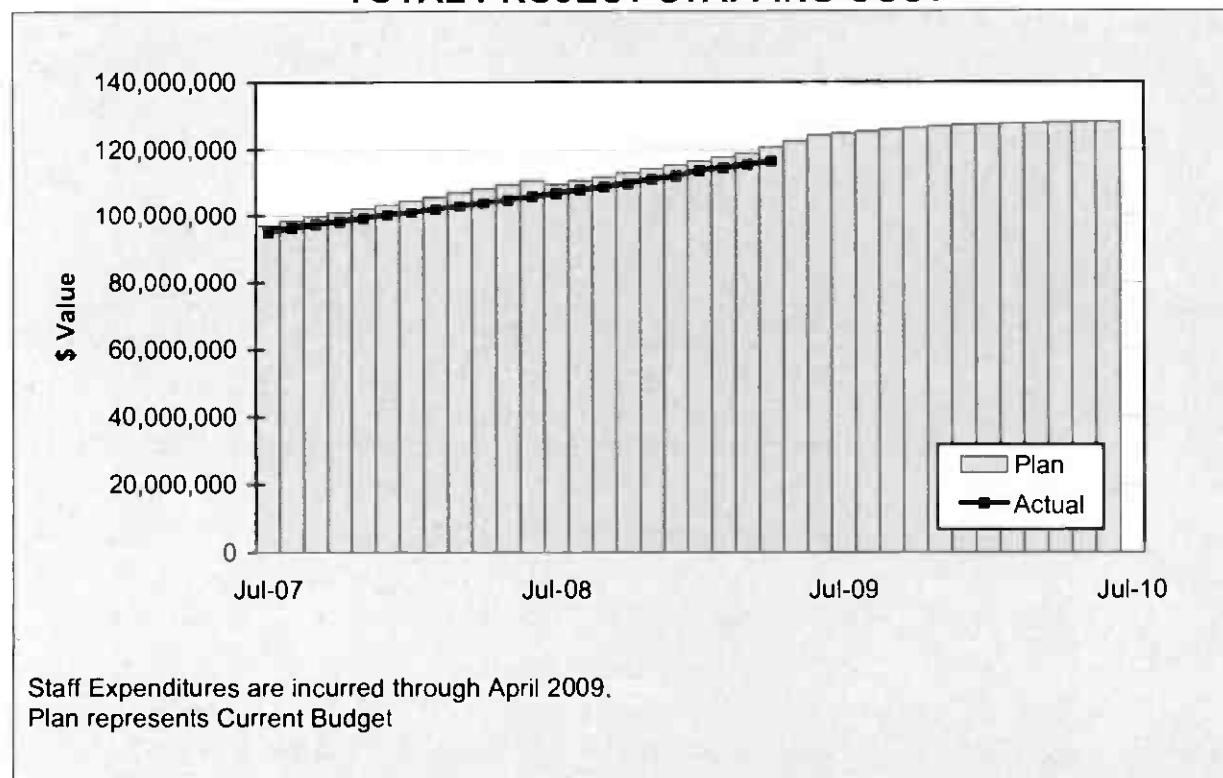
STAFFING STATUS

Total Project Staffing - FTES



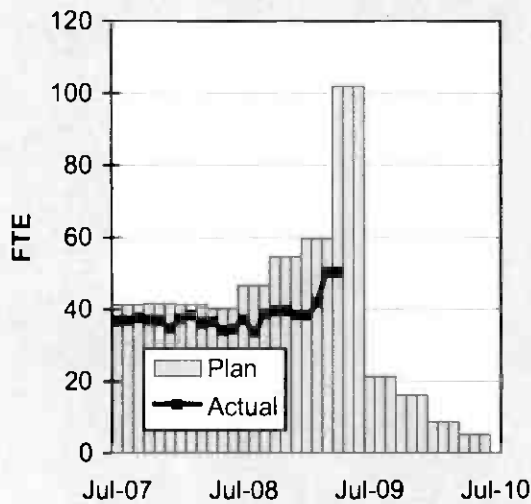
STAFFING STATUS

TOTAL PROJECT STAFFING COST

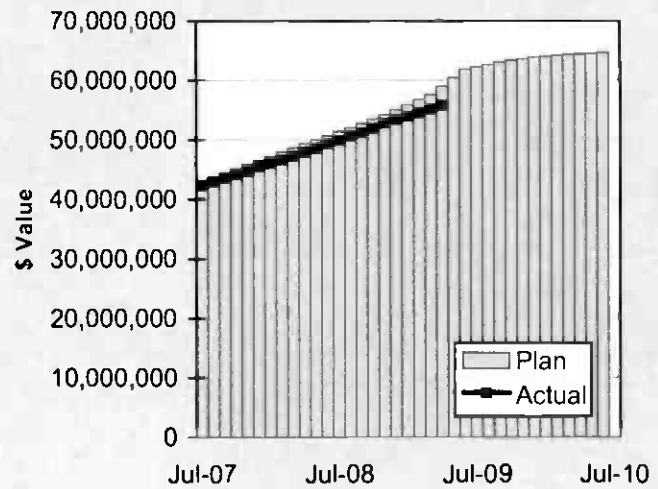


STAFFING STATUS

DIRECT AGENCY - FTES

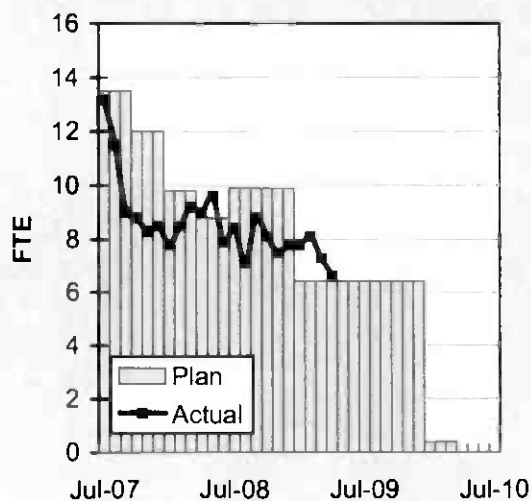


DIRECT AGENCY - COST

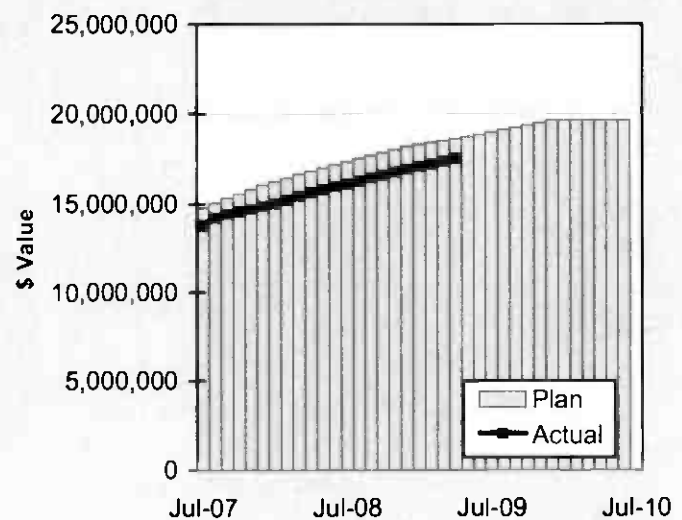


Staff Expenditures are incurred through April 2009.
Plan represents Current Budget

CONSTRUCTION MGMT - FTES



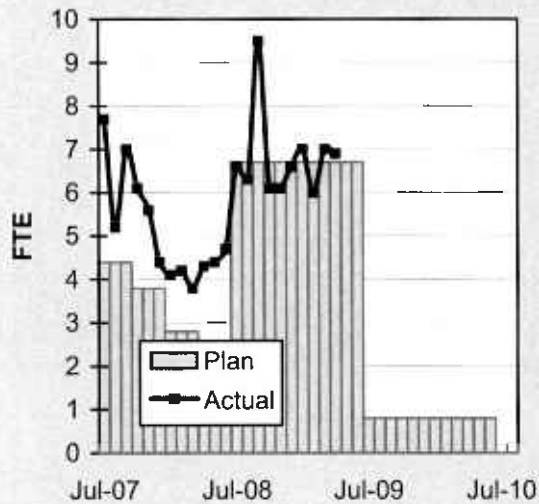
CONSTRUCTION MGMT - COST



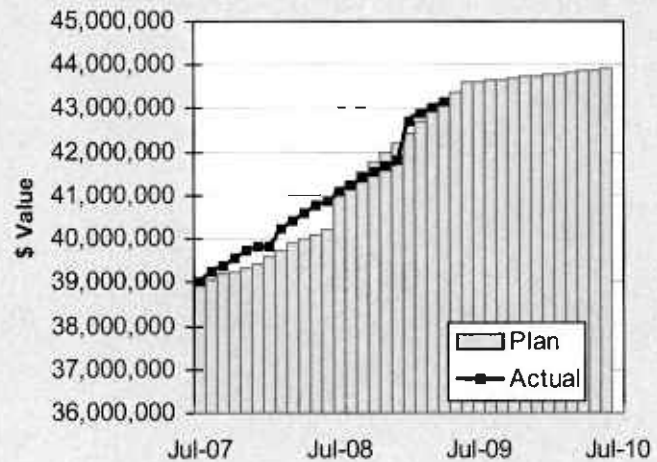
Staff Expenditures are incurred through April 2009.
Plan represents Current Budget.

STAFFING STATUS

ELRT PARTNERS - FTES



ELRT PARTNERS - COST



Staff Expenditures are incurred through April 2009.
Plan represents Current Budget

REAL ESTATE STATUS

- For C0803, the tunnel portion of the alignment, 40 parcels were required for acquisition (11 full takes, 4 partial takes, 20 sub-surface easements/temporary construction easements, 3 sub-surface easements/building protection, and 2 building protections).
- For C0803, the at-grade portion of the alignment, 27 parcels were required for acquisition (17 full takes, 9 partial takes and 1 surface easement). Nine parcels were required for the LAUSD Ramona Opportunity High School site reconfiguration.
- For C0802, 2 parcels were required (1 surface easement and 1 full take parcel).
- Two Encroachment Permits were obtained from Caltrans for the C0803-Tunnel. Three street closures were obtained from the City of LA.

REAL ESTATE ACQUISITION SCHEDULE SUMMARY

<i>Number of Parcels</i>				Behind Schedule	
				Number	Avg. Calendar Days
This Period	69	69	0	0	0
Last Period	69	69	0	0	0

REAL ESTATE STATUS TO DATE BY CONTRACT ACQUISITION PHASE

CONTRACT NO.	Number of Parcels (A+B+C+D+E)	Agreements Signed (A)	Parcels in Condemnation (B)	Under Negotiation (C)	In Appraisal Process (D)	Inactive Parcels (E)	Parcels Available
C0803-Tunnel	40	40	0	0	0	0	40
C0803-At-Grade	27	27	0	0	0	0	27
C0802	2	2	0	0	0	0	2
TOTAL	69	69	0	0	0	0	69
LAST PERIOD	69	69	0	0	0	0	69

ENVIRONMENTAL STATUS

- Completed construction of the Evergreen Cemetery Memorial Wall.
- Approved a single source justification for Kemp Monument to complete fabrication and installation.
- Environmental clearance for the Joint Development of Affordable Housing Projects for the 1st and Boyle and Chavez and Soto.

COMMUNITY RELATIONS STATUS

- Distributed two construction notices which reached approximately 300 residences/businesses. Activities included equipment delivery and street closure.
- Met with 2 residents/business owners to coordinate driveway improvements.
- Provided construction updates at the Executive RAC and Review Advisory Committee Meetings.
- Supported the Homeboy Industries Lo Maximo Awards Dinner.

QUALITY ASSURANCE STATUS

- Continued to review the Design Builder's Monthly Asphalt, Concrete Compressive Strength and Soils Compaction test report summaries - areas of concern are coordinated to resolution with the onsite lab representative.
- Conducted verification testing of Design Builder's special inspections utilizing an independent testing laboratory technician; no issues to report.
- The results of field surveillance activities are documented in Weekly Surveillance Reports, including color digital photos identifying sites of surveillance and issues of concern.

SAFETY STATUS

- Participated in weekly progress meetings with Construction Managers and ELRTC management personnel to discuss safety related issues and construction schedule.
- Conducted specific Tunnel Safety Awareness and Red Tag Clearance training for 282 Metro staff, consultants and Third Party personnel.
- Conducted Safety/Security Meeting with Metro's Security Department to review security protocols in preparation for Revenue Service.
- Participated in ELRTC's weekly supervisory Tool Box safety meetings.
- Monitored construction activities on a daily basis, including weekends, to ensure contractor compliance with Contract Specification.
- Conducted All Hands Safety Meeting with ELRTC Safety personnel, LAFD and Metro's Rail Operations staff.
- ELRTC and their subcontractors reported zero incidents and 78,458 work hours for the month of April 2009. A total of forty (40) recordable incidents have occurred Project to Date. Total Project to Date work hours are 4,024,012. Injury Rates for Recordable incidents are 1.9; well below the published incident rate of 5.3 for recordable cases.

ART DEVELOPMENT STATUS

- Coordination meetings were held with Metro Construction and ELRTC for artwork fabrication/installation schedules for eight stations.

THIRD PARTY AGREEMENT STATUS

Third Party	Type of Agreement	Forecast Execution Date	Required Need Date	Status/ Comments
City of Los Angeles	Amendment	Completed	N/A	Executed December 2002.
Los Angeles County	Master	Completed	N/A	Executed April 2003.
Caltrans (All Projects)	Master	Completed	N/A	Executed July 2003.
Caltrans (101)	Design	Completed	N/A	Executed July 2003.
Caltrans (101)	Construction	Completed	N/A	Executed September 2003.
Caltrans (101)	Maintenance	5/09	Project Completion	The initial negotiation meeting was held on 1/9/03. LACMTA received a draft from Caltrans on 1/22/04. LACMTA reviewed and submitted the agreement to Caltrans on 2/10/04. A follow up call was made on 10/20/05 but no response to date.
LADWP (Water/Power)	Amendment	5/09	*6/04	LACMTA Management, County Counsel, and LACMTA Board staff have participated in meetings with DWP to complete negotiations, since the "Deadline and Delay" clause is not acceptable to LADWP. Alternative language was forwarded to LACMTA Management and County Counsel for review on 10/7/05. LACMTA CEO is to speak with LADWP CEO.
So. Cal. Edison Co.	Amendment	N/A	N/A	SCE Executive Legal Branch stated on 2/25/05 they have no intention of signing agreement.
The Gas Company	Amendment	Completed	N/A	Executed May 2005.
SBC/AT & T	Amendment	Completed	N/A	Executed May 2005. SBC has been acquired by AT&T and has formed a new corporation TCM for work in Southern California. A new agreement has been negotiated with Metro and TCM, which was approved by the Metro Board in April. The new agreement mirrors the SBC agreement except for some minor changes in the insurance language.
Adelphia Cable Company	Amendment	5/09	*6/04	LACMTA received a draft from Adelphia for review. LACMTA Management and County Counsel reviewed the amendment and returned the document to Adelphia with comments. Adelphia's Legal Department is reviewing the document and follow-up calls were made on 10/20/05 and 11/16/05.
Calif Wtr Service Co	Master	Completed	N/A	Executed May 2005.
L.A. County Sanitation Districts	N/A	N/A	N/A	In a letter dated 3/26/03, the Sanitation District stated that there is not a need for an agreement since there are no relocations related to their facilities. The Sanitation District will review submittals related to encasements of their facilities on Indiana Street.
MCI Worldcom	Amendment	Completed	N/A	Executed May 2005.
Metropolitan Wtr Dist	Amendment	Completed	N/A	Executed May 2003.

THIRD PARTY AGREEMENT STATUS

Third Party	Type of Agreement	Forecast Execution Date	Required Need Date	Status/ Comments
Verizon Wireless	Amendment	5/09	*6/04	The revised draft amendment was hand delivered to Verizon on 11/19/03 and an electronic copy was sent to them 2/19/04. Verizon did respond with comments, which were reflected in a revised agreement sent 4/05. Verizon legal is completing final review. Follow up calls were made on 10/20/05 and 11/16/05. Verizon has now joined MCI and once the legal work is complete in late February 2006, LACMTA may be able to use the MCI Agreement for Verizon work. E-mailed MCI Agreement to Verizon Representative for consideration as overall agreement covering Verizon and MCI as the new Verizon.
GST	N/A			Facilities are not impacted by Eastside Construction
Exxon Mobil Oil Company	N/A			Facilities are not impacted by Eastside Construction
Pacific Pipeline Company	N/A			Facilities are not impacted by Eastside Construction
Kinder Morgan Pipeline Company	N/A			Facilities are not impacted by Eastside Construction
Tosco Refining Company	N/A			Facilities are not impacted by Eastside Construction
Equilon Pipeline Company	N/A			Facilities are not impacted by Eastside Construction
Level 3 Communications	N/A			Facilities are not impacted by Eastside Construction
Broadwing Communications	N/A			Facilities are not impacted by Eastside Construction
Eller Media	N/A			Facilities are not impacted by Eastside Construction

* Work has been performed under the current MCA.

**Metro Gold Line Eastside Extension
Monthly Project Status Report**

April 2009

CPUC CROSSING SUMMARY

Batch	Application Status	Initial Package Submittal to MTA	Field Diagnostic Meeting	Revised Drawings Due to MTA	Draft Write-up to MTA	Draft Package Submittal to PUC Local office and Agencies	Final Package Submittal to PUC	CPUC Final Approval
1	Complete	8/5/02	8/12/02	8/26/02	9/6/02	9/6/02	9/6/2002	Approved
2	Complete	10/4/02	10/11/02	10/25/02	11/6/02	11/22/02	11/22/2002	Approved
3	Complete	2/6/03	2/27/03	3/10/03	1/27/03	4/11/02	4/18/2003	Approved
4	Complete	12/14/02	1/15/03	1/29/03	11/13/02	5/5/03	6/18/2003	Approved
4A	Complete	1/24/03	1/29/03	3/14/03	2/7/03	9/5/03	1/23/2004	Approved
6	Complete	3/19/03	3/26/03	6/20/03	2/7/03	9/5/03	9/12/2003	Approved
7	Complete	12/11/02	12/18/02	3/31/03	2/7/03	5/5/03	7/26/2003	Approved
8	Complete	11/26/02	12/18/02	3/31/03	11/15/02	6/6/03	5/21/2004	Approved
9	Complete	1/20/03	1/29/03	3/31/03	11/22/02	8/29/03	9/12/2003	Approved
10	Complete	12/11/03	12/18/02	3/10/03	11/22/02	5/5/03	8/29/2003	Approved
11	Complete	2/13/03	2/27/03	4/18/03	12/6/02	6/6/03	8/29/2003	Approved
12	Complete	2/13/03	2/27/03	4/18/03	12/13/02	6/6/03	9/5/2003	Approved
13	Complete	2/6/03	2/20/03	4/18/03	2/21/03	6/6/03	9/1/2004	Approved
14	Complete	1/8/03	1/15/03	3/14/03	11/12/02	8/29/03	10/30/2003	Approved
15	Complete	2/26/03	N/A	N/A	2/21/03	6/6/03	8/29/2003	Approved
16	Complete	2/26/03	N/A	N/A	2/28/03	6/6/03	8/29/2003	Approved
17	Complete	1/8/03	1/15/03	N/A	2/14/03	5/5/03	6/13/2003	Approved
18	Complete	1/8/03	1/15/03	3/20/03	2/14/03	5/5/03	6/13/2003	Approved
Agency Responsible		ELRTP	MTA	ELRP	ELRTP	MTA	MTA	

Batch No. 5 has been removed, as the Midway Yard will be utilized.

SHADED AREAS REPRESENTS COMPLETION

All applications are approved.

Batch Descriptions	
1 1st / Alameda	10 3rd / Ford
2 Alameda / Temple	3rd / McDonnell
1st / Hewitt	3rd / Arizona
Ped Crossings @ 1st / Alameda Station	11 3rd / Mednik
3 1st / Vignes	3rd / Civic Center Drive
4 1st / Lorena	3rd / La Verne
4A Indiana/1st	12 3rd / Driveways to Sheriff's Station
Indiana/3rd	3rd / Wood / Via Corona / Pomona / Beverly
Indiana Pedestrian Crossing	13 3rd / 60 Fwy WB Connector
6 1st / Mission	3rd / 60 Fwy over ELRT
1st / Anderson	3rd / 710 Fwy SW Connector
1st / Clarence	3rd / Bridge over 710 Fwy
1st / Utah	3rd / 710 Fwy SE Connector
1st/Gless Pedestrian Crossing	14 Union Station Service Road
7 3rd / Rowan	15 1st / Santa Fe
8 3rd / Gage	1st / Myers
3rd / 60 Fwy WB Ramps	16 1st / MTA
3rd /Downey	1st / BNSF
	1st / Union Pacific

CONTRACT C0802 STATUS

Description: 101 Freeway Bridge Overcrossing Contractor: Brutoco Engineering & Construction		Contract No. C0802 Status as of: May 1, 2009																													
Progress/Work Completed: * Bridge work was completed in March 2007 * Plant Maintenance period achieved November 2007 Areas of Concern: * None		Major Activities (In Progress): * None Major Activities Next Period: * None																													
Schedule Summary: Date of Award: 09/07/04 Notice to Proceed: 09/22/04 Original Contract Duration: 700 CD Current Contract Duration: 775 CD Elapsed Time from NTP: 904 CD * * Note: Elapsed time to Milestone # 1 completion		<table border="1" style="width: 100%; border-collapse: collapse;"> <thead> <tr> <th></th> <th style="text-align: center;">Original Contract Dates</th> <th style="text-align: center;">Time Extension</th> <th style="text-align: center;">Current Contract</th> <th style="text-align: center;">Forecast</th> <th style="text-align: center;">Variance CDs</th> </tr> </thead> <tbody> <tr> <td>Notice to Proceed</td> <td style="text-align: center;">09/22/04</td> <td style="text-align: center;">0</td> <td style="text-align: center;">09/22/04</td> <td style="text-align: center;">09/22/04</td> <td style="text-align: center;">0</td> </tr> <tr> <td>Milestone 1 - Complete Abutment No. 10</td> <td style="text-align: center;">06/26/06</td> <td style="text-align: center;">49</td> <td style="text-align: center;">08/14/06</td> <td style="text-align: center;">03/15/07</td> <td style="text-align: center;">-213</td> </tr> <tr> <td>Milestone 2- Complete All Work Without Plant Establishment</td> <td style="text-align: center;">08/23/06</td> <td style="text-align: center;">75</td> <td style="text-align: center;">11/06/06</td> <td style="text-align: center;">08/06/07</td> <td style="text-align: center;">-273</td> </tr> </tbody> </table>							Original Contract Dates	Time Extension	Current Contract	Forecast	Variance CDs	Notice to Proceed	09/22/04	0	09/22/04	09/22/04	0	Milestone 1 - Complete Abutment No. 10	06/26/06	49	08/14/06	03/15/07	-213	Milestone 2- Complete All Work Without Plant Establishment	08/23/06	75	11/06/06	08/06/07	-273
	Original Contract Dates	Time Extension	Current Contract	Forecast	Variance CDs																										
Notice to Proceed	09/22/04	0	09/22/04	09/22/04	0																										
Milestone 1 - Complete Abutment No. 10	06/26/06	49	08/14/06	03/15/07	-213																										
Milestone 2- Complete All Work Without Plant Establishment	08/23/06	75	11/06/06	08/06/07	-273																										
Physical Percent Complete: Physical completion ** as of this reporting period is: 100.00% ** Note: Physical completion assessment reflects work completed and invoice amount shown in Caltrans Monthly Progress/Expense Report No. 30.		<table style="width: 100%;"> <tr> <td style="width: 70%;">Cost Summary:</td> <td style="width: 30%; text-align: right;">\$ In millions</td> </tr> <tr> <td>1. Award Value:</td> <td style="text-align: right;">6.42</td> </tr> <tr> <td>2. Executed Modifications:</td> <td style="text-align: right;">0.00</td> </tr> <tr> <td>3. Approved Change Orders:</td> <td style="text-align: right;">0.00</td> </tr> <tr> <td>4. Current Contract Value (1+2+3):</td> <td style="text-align: right;">6.42</td> </tr> <tr> <td>5. Incurred Cost:</td> <td style="text-align: right;">6.42</td> </tr> </table>						Cost Summary:	\$ In millions	1. Award Value:	6.42	2. Executed Modifications:	0.00	3. Approved Change Orders:	0.00	4. Current Contract Value (1+2+3):	6.42	5. Incurred Cost:	6.42												
Cost Summary:	\$ In millions																														
1. Award Value:	6.42																														
2. Executed Modifications:	0.00																														
3. Approved Change Orders:	0.00																														
4. Current Contract Value (1+2+3):	6.42																														
5. Incurred Cost:	6.42																														

CONTRACT C0803 STATUS

Description: Tunnel, Stations, Trackwork & Systems Contractor: Eastside LRT Constructors	Contract No. C0803 Status as of: May 1, 2009																																																																													
Progress/Work Completed: <ul style="list-style-type: none">* Light pole foundations at Mariachi Plaza Station (MPS) entrance* Soto Station (SS) was energized* Installed SS track dampers and escalators # 1A and 1B* Placed platform edge tactile warning panels at SS* Installed edge lights framing at MPS and SS* Installed elevator # 2 cab at MPS and SS* Installed VMS signs, cameras and speakers at MPS and SS* Erected remaining booster fans at both portals* Ran an LRV car under catenary power on the L.A. City side* Street grind/overlay paving along Segments 1, 2 and 4* Poured mountable curve along Segments 2 and 4* Commissioned Traction Power Substations (TPS) # 1 and 2* Erected benches, signs and map cases at above ground stations* Installed canopy metal roof at Pico/Aliso (PA) Station* Erected walkway guardrail at Indiana and Maravilla stations* Began landscaping at above ground stations and portals Areas of Concern: <p>The contractor has slipped completion of Milestone # 1 by 63 calendar days. However, at this time there is no schedule impact to ROD due to ELRTC continued prioritization of work necessary to support the project pre-revenue operations and ROD.</p>	Major Activities (In Progress): <ul style="list-style-type: none">* Plaza paving and lighting at MPS* Platform top slab and edge tactile warning panels at MPS* Cable and wire pull and terminations at MPS and SS* Escalators, elevators and attenuators at MPS and SS* Mezzanine wall and floor tile installation at MPS and SS* Ceiling panels at MPS and SS platform and mezzanine levels* Door frames and doors at MPS and SS* Cable and wire terminations at all cross passages* Sump pumps installation at cross passage # 2 and 5* Booster fans wiring at both portals* Run an LRV car under catenary power in the tunnels* Street striping, lighting and traffic signals - Segments 1, 2 and 4* Art panels and supports at all stations* Continue electrical and mechanical local field testing throughout the alignment* Systems Integration Testing (SIT) throughout the alignment Major Activities Next Period: <ul style="list-style-type: none">* Architectural finishes at the MPS and SS Stations* Canopy and sump pumps installation at MPS and SS* Cable, wire pulling and terminations at all stations* Test ventilation system in the tunnels and at MPS and SS* Test the Cable Transmission System throughout the alignment* Test the radio and the fire alarm systems* Run an LRV car under catenary power from end to end* Canopy glazing and laminated glass at PA, Atlantic and ELACC stations* Seismic, gas, fire suppression and intrusion detection devices																																																																													
Schedule Summary:	<table><tr><td></td><td>Original Contract Dates</td><td>Time Extension</td><td>Current Contract</td><td>Forecast</td><td>Variance CDs</td></tr><tr><td>Date of Award:</td><td>06/01/04</td><td></td><td></td><td></td><td></td></tr><tr><td>Notice to Proceed:</td><td>07/01/04</td><td></td><td></td><td></td><td></td></tr><tr><td>Original Contract Duration:</td><td>1795 CD</td><td></td><td></td><td></td><td></td></tr><tr><td>Current Contract Duration:</td><td>1887 CD</td><td></td><td></td><td></td><td></td></tr><tr><td>Elapsed Time from NTP:</td><td>1766 CD</td><td></td><td></td><td></td><td></td></tr><tr><td>Option D Contract duration</td><td>90 CD Complete</td><td></td><td></td><td></td><td></td></tr><tr><td>Notice to Proceed</td><td>07/01/04</td><td>0</td><td>07/01/04</td><td>07/01/04</td><td>0</td></tr><tr><td>Milestone 1 - Contract Completion. Complete all systems integration testing and ready for MTA's pre-revenue operation testing.</td><td>12/31/08</td><td>91</td><td>04/01/09</td><td>06/03/09</td><td>-63</td></tr><tr><td>Milestone 3 - Complete Universal Fare System Equipment area.</td><td>04/30/08</td><td>255</td><td>01/10/09</td><td>01/30/09</td><td>-20</td></tr><tr><td>Milestone 5 - Vacate all staging areas and turn over to MTA.</td><td>05/30/09</td><td>92</td><td>08/30/09</td><td>08/30/09</td><td>0</td></tr><tr><td>Milestone 6 - Complete design and construction of Option D work.</td><td>09/28/04</td><td>0</td><td>09/28/04</td><td>09/28/04</td><td>0</td></tr></table>							Original Contract Dates	Time Extension	Current Contract	Forecast	Variance CDs	Date of Award:	06/01/04					Notice to Proceed:	07/01/04					Original Contract Duration:	1795 CD					Current Contract Duration:	1887 CD					Elapsed Time from NTP:	1766 CD					Option D Contract duration	90 CD Complete					Notice to Proceed	07/01/04	0	07/01/04	07/01/04	0	Milestone 1 - Contract Completion. Complete all systems integration testing and ready for MTA's pre-revenue operation testing.	12/31/08	91	04/01/09	06/03/09	-63	Milestone 3 - Complete Universal Fare System Equipment area.	04/30/08	255	01/10/09	01/30/09	-20	Milestone 5 - Vacate all staging areas and turn over to MTA.	05/30/09	92	08/30/09	08/30/09	0	Milestone 6 - Complete design and construction of Option D work.	09/28/04	0	09/28/04	09/28/04	0
	Original Contract Dates	Time Extension	Current Contract	Forecast	Variance CDs																																																																									
Date of Award:	06/01/04																																																																													
Notice to Proceed:	07/01/04																																																																													
Original Contract Duration:	1795 CD																																																																													
Current Contract Duration:	1887 CD																																																																													
Elapsed Time from NTP:	1766 CD																																																																													
Option D Contract duration	90 CD Complete																																																																													
Notice to Proceed	07/01/04	0	07/01/04	07/01/04	0																																																																									
Milestone 1 - Contract Completion. Complete all systems integration testing and ready for MTA's pre-revenue operation testing.	12/31/08	91	04/01/09	06/03/09	-63																																																																									
Milestone 3 - Complete Universal Fare System Equipment area.	04/30/08	255	01/10/09	01/30/09	-20																																																																									
Milestone 5 - Vacate all staging areas and turn over to MTA.	05/30/09	92	08/30/09	08/30/09	0																																																																									
Milestone 6 - Complete design and construction of Option D work.	09/28/04	0	09/28/04	09/28/04	0																																																																									
Physical Percent Complete: <p>Physical completion * as of this reporting period is: 96.72%</p> <p>* Note: Physical completion assessment reflects work completed and work in progress.</p>	Cost Summary: <table><tr><td></td><td>\$ In millions</td></tr><tr><td>1. Award Value:</td><td>600.45</td></tr><tr><td>2. Executed Modifications:</td><td>15.85</td></tr><tr><td>3. Approved Change Orders:</td><td>0.02</td></tr><tr><td>4. Current Contract Value (1+2+3):</td><td>616.32</td></tr><tr><td>5. Incurred Cost:</td><td>591.06</td></tr></table>							\$ In millions	1. Award Value:	600.45	2. Executed Modifications:	15.85	3. Approved Change Orders:	0.02	4. Current Contract Value (1+2+3):	616.32	5. Incurred Cost:	591.06																																																												
	\$ In millions																																																																													
1. Award Value:	600.45																																																																													
2. Executed Modifications:	15.85																																																																													
3. Approved Change Orders:	0.02																																																																													
4. Current Contract Value (1+2+3):	616.32																																																																													
5. Incurred Cost:	591.06																																																																													

CONTRACT E700051F STATUS

Description: 1st Street Bridge Strenghtening Contractor: The Griffith Company		Contract No. E700051F Status as of: May 1, 2009					
Progress/Work Completed: * Bridge turned over to Metro on October 26, 2007 Areas of Concern: * None		Major Activities (In Progress): * None Major Activities Next Period: * None					
Schedule Summary: Date of Award: 01/19/07 Notice to Proceed: 02/06/07 Original Contract Duration: 251 CD Current Contract Duration: 281 CD Elapsed Time from NTP: 281 CD			Original Contract Dates	Time Extension	Current Contract	Forecast	Variance CDs
		Notice to Proceed	02/06/07	0	02/06/07	02/06/07	0
		Milestone 1 - Substantial Completion	10/15/07	30	11/14/07	11/14/07	0
Physical Percent Complete: Physical completion as of 11/14/07: 100.00% * * As reported by the City of Los Angeles, Department of Contract Administration		Cost Summary: \$ In millions 1. Award Value: * 4.26 2. Executed Modifications: 0.00 3. Approved Change Orders: 0.05 4. Current Contract Value (1+2+3): 4.31 5. Incurred Cost: 4.31 * City of Los Angeles					

CONTRACT C0893 STATUS

Description: Pomona Atlantic Parking Structure Contractor: W. M. Klorman Construction Corp.		Contract No. C0893 Status as of: May 1, 2009					
Progress/Work Completed: * Submitted 100% design drawings for review * Metro completed review of 75% structural and plumbing design drawings * Submitted excavation and support system submittals for review * Approved Baseline Schedule resubmittal Areas of Concern: * None		Major Activities (In Progress): * AFC design submittal * Shoring plan * Sewer encasement submittal * Complete field mobilization * Coordination meetings with the design team * Metro obtain County of Public Works permit for storm drain box connection Major Activities Next Period: * Approved for Construction (AFC) drawings * Contract and construction submittals * Secure permanent utility services for the site * Trench shoring for sewer encasement * Begin mass excavation					
Schedule Summary:			Original Contract Dates	Time Extension	Current Contract	Forecast	Variance CDs
Date of Award: 12/15/08		Notice to Proceed	01/14/09	0	01/14/09	01/14/09	0
Notice to Proceed: 01/14/09		Milestone 1 - Substantial Completion	02/18/10	0	02/18/10	02/18/10	0
Original Contract Duration: 400 CD							
Current Contract Duration: 400 CD							
Elapsed Time from NTP: 108 CD							
Physical Percent Complete:		Cost Summary: \$ In millions					
Physical completion as of 4/30/09: 7.8% *		1. Award Value: 8.15					
		2. Executed Modifications: 0.00					
		3. Approved Change Orders: 0.00					
		4. Current Contract Value (1+2+3): 8.15					
* Note: Physical completion assessment reflects work completed and work in progress.		5. Incurred Cost: 0.83					

CONTRACT P2550 STATUS

Description: 2550 Rail Vehicle Program		Contract No. P2550			
Contractor: AnsaldoBreda, Italy (AB)		Status as of: May 1, 2009			
Progress/Work Completed: 1. As of May 1, 2009 twenty-one vehicles have been accepted by MTA and three other vehicles are undergoing testing for acceptance. 2. Vehicle final assembly work continues in Pittsburg, CA. 3. Shipment of foreign and domestic parts for final assembly continue to arrive in Pittsburg, CA. 4. Several Engineering meetings with AB and its subcontractors have been held during the period to evaluate progress and to close open items. 6. Vehicle Nos. 727 and 728 are the next vehicles to be accepted. Areas of Concern: Accepted vehicle reliability and availability for revenue service is AnsaldoBreda's primary focus for June Eastside Extension opening. AB is tasked to augment technical staff to support revenue service availability. With arrival of new vehicles from Pittsburg to Los Angeles, available vehicle storage space at Gold Line Shop/Yard is a concern as it affects vehicle movement in the yard. MTA plans to relocate the P2000 fleet presently in Metro Gold Line to Metro Blue Line.		Major Activities (In Progress): 1. AnsaldoBreda's manufacturing plants in Pistoia and Naples, Italy continue to prepare carshells and subassemblies for shipment to U.S.A. Pittsburg plant continues vehicle assembly work. 2. Testing of Vehicles 727 & 728 is ongoing in Los Angeles for next vehicle acceptance. 3. Weekly project meetings are held to close open items. Major Activities Next Period: 1. Several Technical Progress meetings will be held to emphasize the urgency of resolution of remaining critical items for final acceptance of vehicles. 2. Cars 727 and 728 will continue final testing for Conditional Acceptance in May 2009. 3. Car 729 will be shipped to Los Angeles on May 20, 2009.			
			Quantity	Contract Total Quantity	Balance Due
Schedule Summary: Date of Award: 04/24/03 Notice to Proceed: 06/06/03 Original Contract Duration: 1442 CD Elapsed Time from NTP: 2102 CD Note: A schedule of vehicle delivery has been submitted by AB with 50th (last) car delivered by July 2010. Metro has extended the expiration date of the options to May 31, 2009.		Notice to Proceed 6/6/2003A			
		Vehicles Assembled	42	50	8
		LRV at Commissioning Site - Metro	24	50	26
		LRV Accepted for Revenue Service by Metro	21	50	29
Physical Percent Complete: Percent of LRVs assembled = 42/50 = 84% Percent Work Product Invoiced through April 2009 is 57.8%		Cost Summary: \$ In millions 1. Award Value: Pasadena (Proj. No.: 800151) 126.99 Eastside Ext. (Proj. No.: 800088) 31.75 Total Award Value 158.74 2 Executed Modifications 0.00 3 Approved Change Orders: 0.00 4 Current Contract Value (1 + 2 + 3): 158.74 5 Payments or invoices in process: 91.91			

CONSTRUCTION PHOTOGRAPHS



Boyle Heights/Mariachi Plaza Station pedestrian plaza.



Placement of mezzanine floor tiles at the Boyle Heights/Mariachi Plaza Station.

CONSTRUCTION PHOTOGRAPHS



Architectural finishes and artwork placement at Soto Station.



Placement of artwork panels at Soto Station.

CONSTRUCTION PHOTOGRAPHS



One of several art panels installed at Indiana Station.

CONSTRUCTION PHOTOGRAPHS



Installation of Lexan panels in the canopy at the East LA Civic Center Station.

APPENDIX

COST AND BUDGET TERMINOLOGY

ESTIMATED PROJECT COSTS: Estimated project costs are based upon the current project cost estimates that are produced during the engineering design phase.

COMMITMENTS: The total of actual contract awards, executed change orders or amendments, approved work orders of Master Cooperative Agreements, offers accepted for purchase of real estate, and other LACMTA actions that will result in specific expenditures at a future time.

INCURRED COST: The total value of work performed to date of services received, and acquired materials or properties.

EXPENDITURES: The total dollar amount of checks written by the LACMTA's Accounting department for contractor or consultant invoices, third party invoices, staff salaries, and closing payments for escrow accounts that is reported in the LACMTA's Financial Information System (FIS).

CONSTRUCTION: Includes guideways, yards and shops, systems equipment, stations, and vehicles.

PROFESSIONAL SERVICES: Includes general engineering, construction management services, consultant design support services during construction, legal counsel, and agency (LACMTA staff) costs.

RIGHT-OF-WAY: Includes real estate appraisals, purchase cost of parcels, easements, right-of-entry permits, escrow fees, and tenant relocation.

UTILITY/AGENCY FORCE ACCOUNT: Includes work by outside agencies and utilities in design coordination and review.

CONTINGENCY: A fund established at the beginning of a project to provide for anticipated but unknown additional costs that may arise during the course of the project.

SPECIAL CONDITIONS: Includes utilities relocation, environmental compliance and mitigation, master cooperative agreements, insurance program, artwork, systems integration testing and pre-revenue operations.

APPENDIX

LIST OF ACRONYMS

AFE	Authorization For Expenditure
ATC	Automatic Train Control
CADD	Computer Aided Drafting and Design
CALTRANS	California Department of Transportation
CD	Calendar Day
CM	Construction Manager
CMAQ	Congestion Mitigation Air Quality
CN	Change Notice
CO	Change Order
CNFPFA	Concurrent Non-FFGA Project Activities
CPM	Critical Path Method
CPUC	California Public Utilities Commission
CR	Camera Ready
CTC	California Transportation Commission
CUD	Contract Unit Description
DB	Design/Build
DBB	Design/Bid/Build
DD	Design Development
DOT	Department of Transportation
DWP	Department of Water and Power
EIR	Environmental Impact Report
EIS	Environmental Impact Statement
EPBM	Earth Pressure Balance Machine
ESP	Eastside LRT Partners
FAR	Federal Acquisition Regulation
FD	Final Design
FEIS	Final Environmental Impact Statement
FEIR	Final Environmental Impact Report
FFGA	Full Funding Grant Agreement
FIS	Financial Information System
FSEIR	Final Supplemental Environmental Impact Report
FSEIS	Final Supplemental Environmental Impact Statement
FTA	Federal Transit Administration
FTE	Full Time Equivalent
GDSR	Geotechnical Design Summary Report
IFB	Invitation for Bid
IPO	Integrated Project Office
JV	Joint Venture
LA	Los Angeles
LABOE	Los Angeles Bureau of Engineering
LACFCD	Los Angeles County Flood Control District
LACMTA	Los Angeles County Metropolitan Transportation Authority
LADOT	Los Angeles Department of Transportation

APPENDIX
LIST OF ACRONYMS (Continued)

LADPW	Los Angeles Department of Public Works
LADWP	Los Angeles Department of Water and Power
LAUSD	Los Angeles Unified School District
LNTP	Limited Notice To Proceed
LONP	Letter Of No Prejudice
LRT	Light Rail Transit
LRTP	Long Range Transportation Plan
LRV	Light Rail Vehicle
MIS	Major Investment Study
MPSR	Monthly Project Status Report
N/A	Not Applicable
NEPA	National Environmental Protection Act
NPDES	National Pollution Discharge Elimination System
NTE	Not to Exceed
NTP	Notice To Proceed
OCIP	Owner-Controlled Insurance Program
P3	Primavera Project Planner® (scheduling software)
PC	Project Control
PE	Preliminary Engineering
PEER	Permit Engineering Evaluation Report
PGL	Pasadena Gold Line
PIP	Project Implementation Plan
PM	Project Manager
PMA	Project Management Assistance
PMIP	Project Management Implementation Plan
PMOC	Project Management Oversight Consultant
PMP	Project Management Plan (manual)
P&P	Policies & Procedures
PR	Project Report
PSR	Project Study Report
QA	Quality Assurance
QAR	Quality Assurance Report
QC	Quality Control
QPSR	Quarterly Project Status Report
RAC	Review Advisory Committee
RAG	Rail Activation Group
RFC	Request For Change
RFP	Request For Proposal
ROD	Record Of Decision
ROD	Revenue Operations Date
ROM	Rough Order of Magnitude

APPENDIX
LIST OF ACRONYMS (Continued)

ROW	Right-Of-Way
SCAQMD	Southern California Air Quality Management District
SCE	Southern California Edison
SCRRA	Southern California Regional Rail Authority
SHA	State Highway Account
SHPO	State Historic Preservation Office
SIT	System Integration Testing
SOV	Schedule Of Value
SOW	Statement Of Work
SP	Special Provision
STIP	State Transportation Improvement Program
STP	Surface Transportation Program
TBD	To Be Determined
TBM	Tunnel Boring Machine
TCRP	Traffic Congestion Relief Program
TPSS	Traction Power Substation
TRACS	Transit Automatic Control System
UFS	Universal Fare System
USDOT	U.S. Department Of Transportation
VE	Value Engineering
WBS	Work Breakdown Structure
WP	Work Package