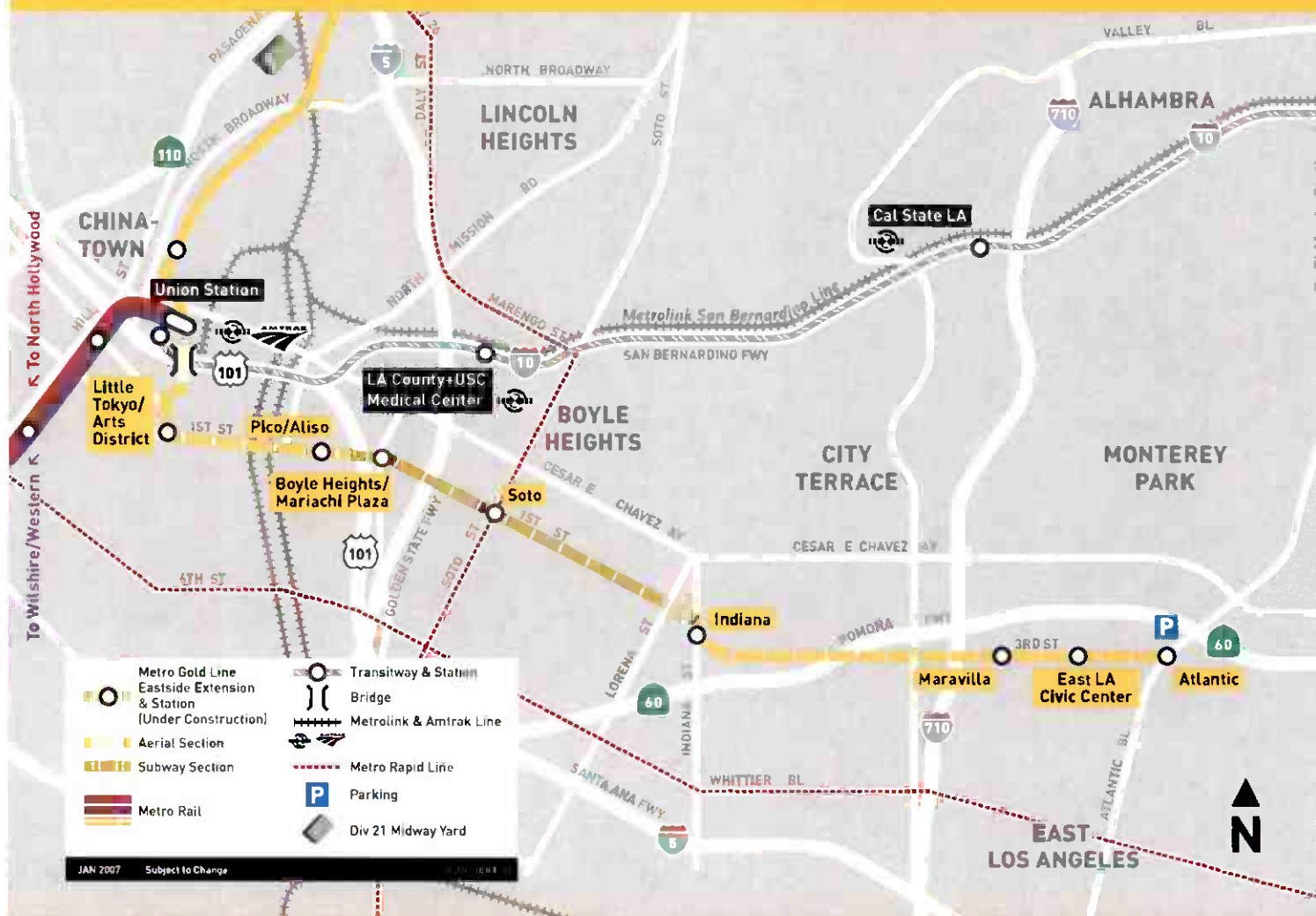


# Metro Gold Line Eastside Extension



# Metro

# **METRO GOLD LINE EASTSIDE EXTENSION**

## **MONTHLY PROJECT STATUS REPORT**

THE PREPARATION OF THIS DOCUMENT HAS BEEN FINANCED IN PART THROUGH A GRANT FROM THE U. S. DEPARTMENT OF TRANSPORTATION, FEDERAL TRANSIT ADMINISTRATION (FTA), UNDER THE FEDERAL TRANSIT ACT OF 1964, AS AMENDED, AND FUNDS FROM THE STATE OF CALIFORNIA.

**FEBRUARY 2009**

## **TABLE OF CONTENTS**

|  | Page No. |
|--|----------|
| Project Overview & Status.....               | 1-3      |
| Management Issues.....                       | 3        |
| Project Status                               |          |
| • Project Scope.....                         | 4        |
| • Schedule                                   |          |
| ○ Key Milestones Six-Month Lookahead .....   | 5        |
| ○ Project Master Schedule Critical Path..... | 6-9      |
| ○ Critical Path Narrative.....               | 10       |
| • Project Cost Status.....                   | 11-12    |
| • Financial/Grant Status.....                | 13-14    |
| • Staffing.....                              | 15-17    |
| • Real Estate.....                           | 18       |
| • Environmental.....                         | 19       |
| • Community Relations.....                   | 19       |
| • Quality Assurance.....                     | 20       |
| • Safety.....                                | 20       |
| • Art Development.....                       | 20       |
| • Third Party.....                           | 21-22    |
| • CPUC Crossing.....                         | 23       |
| Contract C0802 Status .....                  | 24       |
| Contract C0803 Status .....                  | 25       |
| Contract E700051F Status.....                | 26       |
| Contract C0893 Status .....                  | 27       |
| Contract P2550 Status .....                  | 28       |
| Construction Photographs .....               | 29-32    |
| Appendices.....                              | 33-36    |

## **PROJECT OVERVIEW & STATUS**

*The Metro Gold Line Eastside Extension Project is a six-mile, dual track light rail system with eight new stations and one station modification. The system originates at Union Station in downtown Los Angeles, where it connects with the Pasadena Gold Line, traveling generally east to Pomona and Atlantic Boulevards. The system travels over the State Route 101 Freeway and traverses the existing 1<sup>st</sup> Street Bridge over the Los Angeles River. The system travels south on Alameda Street and then east on 1<sup>st</sup> Street with two stations at Alameda and Utah Streets. East of the Los Angeles River and 1<sup>st</sup> and Utah Streets, the alignment transitions to tunnel for approximately 1.7 miles, and continues beneath 1<sup>st</sup> Street to underground stations at 1<sup>st</sup> Street and Boyle Avenue and 1<sup>st</sup> Street and Soto Street. The alignment returns to the surface near the intersection of 1<sup>st</sup> Street and Lorena Streets, then jogs to the south, transitioning to follow 3<sup>rd</sup> Street with stations at Indiana Street, Ford Boulevard, Mednik Avenue and Pomona and Atlantic Boulevards.*

Metro's consultant, ARINC, continued the software design phase for the expansion of the existing SCADA system per the approved baseline schedule. Procurement of the hardware continued this period, as well as development of new software. A contract modification was issued to ARINC for design changes and to provide additional workstations. Contract milestones were affected, but Metro feels enough integration will be completed to avoid any impacts to the Revenue Operations Date (ROD). Systems Integration Testing (SIT) Phase II is Metro's responsibility.

The Pomona/Atlantic Parking Structure contractor, W. M. Klorman Corporation, completed design development and began final design. The contractor submitted 75% architectural, civil, electrical, fire suppression and landscape design drawings for Metro's review. Also, the contractor submitted several miscellaneous contract submittals this period.

Metro staff reviewed the 30% design package for the Division 21 Body Shop and returned comments to the design consultant, Eastside LRT Partners. The consultant continued with the final design this period and began preparation of the 70% design review package, which will be submitted next period for review.

Underground construction is proceeding per plan. The C0803 contractor continued tensioning of OCS contact wire throughout the tunnels and completed connecting the 34.5 KV feeders. Construction crews completed pulling Fiber Optic cable (FO) through the duct bank conduits and began pulling FO from the splice boxes into the cross passages. Installation of radio equipment in the tunnels and cross passages was completed this period.

At the Boyle Heights/Mariachi Plaza Station (MPS), installation of elevators and escalators continued per schedule. Field crews began installation of elevator cabs; set elevator equipment in the elevator mechanical rooms; and installed escalators # 2A and 2B. Erection of ceiling grid and panels is near completion at the platform and mezzanine levels, as well as placement of lighting fixtures. Installation of radiax cable and supports throughout the station was completed and tile installation at the mezzanine and entrance-landing levels continued. At the mezzanine level, construction crews began erecting guard railing, and casting color concrete floors and dry packing in anticipation of floor tile installation. Assembly and installation of track dampers continued this period. Field crews continued wire connections and terminations in the Train Control and Communication (TC&C) room, as well as in the Auxiliary Power (AP) rooms. At the station plaza area, the canopy concrete support system was placed, and fine backfilling and fine grading continued. The Ancillary Switch Gear

## **PROJECT OVERVIEW & STATUS**

Substation (ASGS) outside the station was commissioned.

At the Soto Station (SS), field crews poured the platform top CIP center slab and also poured stair # 7 and 9 steps. Placement of platform and mezzanine level ceiling grids and panels is near completion and at the mezzanine level and station entrance, placement of wall tile continued. Dry packing on the mezzanine floor began in anticipation of floor tile installation. In the TC&C and AP rooms, field crews continued pulling cable and began wire connections and terminations. The escalator/elevator supplier crews began assembly of escalators 1A and 1B, and completed installation of elevator frames and guides. The mechanical subcontractor crews continued assembly of track dampers and erection of sound traps in the emergency fan rooms. Also, at the Traction Power Substation 2 (TPS-02) site, the systems subcontractor completed pulling wire and began terminations at the substation compartments.

At the East Portal (EP), field crews began pulling cable and wire into the electrical and mechanical rooms. The UPS equipment cabinets and batteries were installed in the AP room. Installation of fire suppression equipment was completed this period.

At-grade construction is proceeding according to plan. At Union Station (US) and the 101 Freeway Bridge Overcrossing, field crews performed the OCS tie-in at US, completed tensioning the OCS contact wire and began regulating the catenary system.

Street restoration continued this period along Alameda Street (Segment 1). On the east side of Alameda Street, trenches were dug, lighting conduit and pull boxes were installed and light pole concrete foundations were poured. Along 1<sup>st</sup> Street between Vignes Street and the West Portal (Segment 2B), field crews poured mountable curb on the north side of the 1<sup>st</sup> Street Bridge and continued work on intersections traffic signals and signs. Also, regulating the catenary system began this period. The 1<sup>st</sup> Street Bridge continues to be open for eastbound circulation.

Guideway construction along 1<sup>st</sup> Street, between Lorena and Indiana Streets in Segment 4A, is nearing completion. Field crews completed curb, gutter, sidewalk and driveway pours and continued preparations for street grind and overlay paving. At the TPS-03 site, at the intersection of 1<sup>st</sup> and Lorena Streets, the systems subcontractor began equipment pre-testing in preparation for commissioning next period.

Construction along 3<sup>rd</sup> Street in Segment 5, between Ditman and Eastern Avenues, is also near completion. The systems subcontractor completed installing traffic controllers at street intersections and continued final punch list work. At the TPS-04 site, at the intersection of 3<sup>rd</sup> Street and Sunol Road, the substation was commissioned this period.

Between Mednik and Atlantic Boulevard (Segments 6 and 7), construction is also nearing completion. Construction crews continued with final punch list work in preparation for custody and control turnover to Los Angeles County.

## **PROJECT OVERVIEW & STATUS**

In other areas of the alignment, at-grade station construction continues according to plan. At the Little Tokyo/Arts District (LT/AD) Station field crews installed platform edge tactile warning strips, began mounting public address speakers, cameras and Variable Message Signs (VMS) and installed irrigation pipe and controllers. At the Pico/Aliso Station, the platform architectural colored center slab was poured and irrigation lines were installed. Installation of canopy tensile fabric panels at the Indiana and Maravilla Stations began this period, as well as installation of platform edge tactile warning strips and the iron picket fence. At the East Los Angeles Civic Center Station, platform edge tactile warning strips were installed and platform tile installation began. At Atlantic Station, the platform tile installation was completed and construction crews began erecting the ticket kiosk metal frame and the canopy tensile fabric panels.

The testing phase of the project continued this period. The contractor began local circuit and control testing of ventilation equipment, auxiliary power transformers and MCC at the underground stations. The local field acceptance testing for power and train control equipment also began this period. Along the Los Angeles County portion of the alignment, the OCS measurement and visual tests, as well as pantograph clearance testing began.

The Universal Fare System (UFS) equipment is in storage at the vendor's facility until the equipment is required for installation. Metro staff has determined that in order to minimize the risk of equipment damage and vandalism, equipment installation will be deferred to the period of Pre-Revenue Operations. Metro provided the vendor with an eight-week notice for equipment delivery. During this period, the (UFS) infrastructure work - installation of communication pre-wire and equipment anchor supports - at the above ground stations was completed.

The Metro Art Department continued providing technical support and coordination between the C0803 contractor and the artists responsible to provide art pieces for the eight stations. The artists continue working with multiple fabricators to meet the C0803 contractor installation schedule. Fabrication of art pieces is well underway and shipments to the site of completed pieces continued per schedule. Metro and ELRTC are continuing with coordination meetings, where fabrication and installation issues are discussed.

The Metro Rail Activation Group continued identifying all the requirements necessary to obtain the Certificate of Occupancy. The group completed updating the M3 inventory system and continued the training program for operators. The group also participated in rail activation coordination meetings with the contractor and began final preparations for the first safety drill scheduled for next period.

## **MANAGEMENT ISSUES**

No Management Issues for the period ending February 2009.

## PROJECT SCOPE

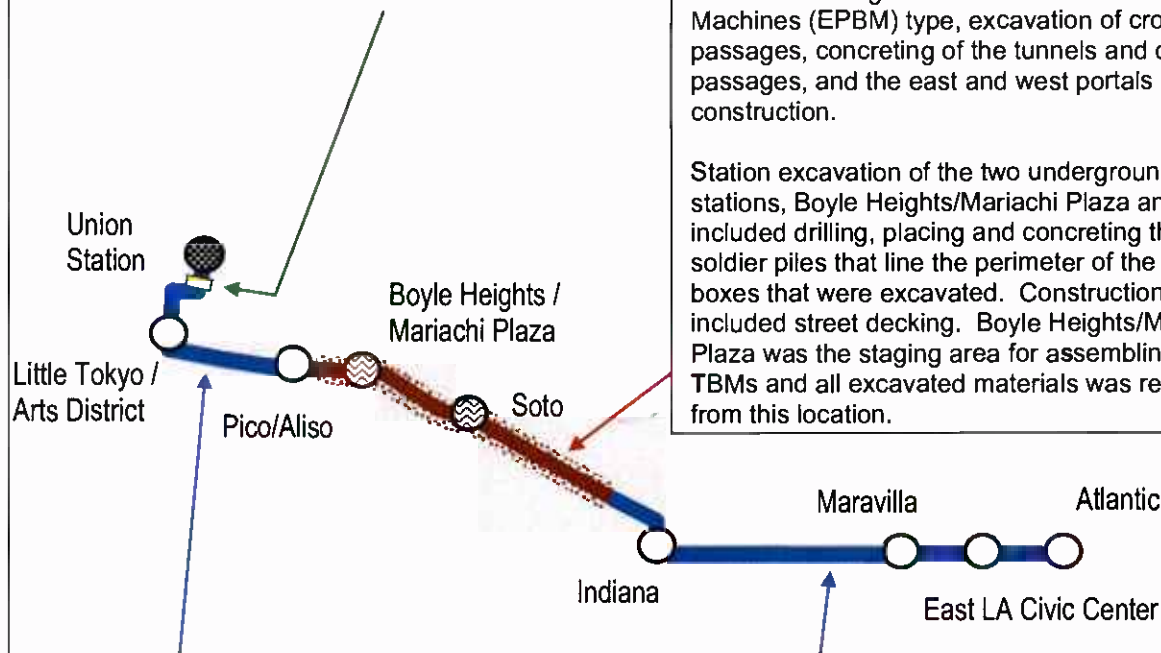
### **Contract C0802 – 101 Freeway Bridge**

**Overcrossing:** The construction of the bridge was combined with Caltrans freeway improvements project. Caltrans administered the construction and the LACMTA provided oversight and was responsible for the construction costs of the bridge overcrossing.

### **Contract C0803 - Tunnel and Station**

**Excavation (Design/Bid/Build):** Construction of the 1.7 mile tunnel segment included tunnel excavation using two Earth Pressure Balance Machines (EPBM) type, excavation of cross passages, concreting of the tunnels and cross passages, and the east and west portals construction.

Station excavation of the two underground stations, Boyle Heights/Mariachi Plaza and Soto, included drilling, placing and concreting the soldier piles that line the perimeter of the station boxes that were excavated. Construction also included street decking. Boyle Heights/Mariachi Plaza was the staging area for assembling the TBMs and all excavated materials was removed from this location.



**Contract C0803 - Stations, Trackwork, and Systems (Design/Build):** Construction of the two underground stations includes structural walls, station platforms, mezzanines, station entrances, and plazas, architectural finishes and all related mechanical and electrical work.

Construction of the six-mile alignment includes six at-grade stations, trackwork installation and testing for the entire alignment.

Systems installation and testing is inclusive of power systems, automatic train control, fire and emergency management, TRACS and communications systems. The contractor will be responsible for systems integration testing for the entire line segment prior to pre-revenue operations.

**Metro Gold Line Eastside Extension  
Monthly Project Status Report**

**February 2009**

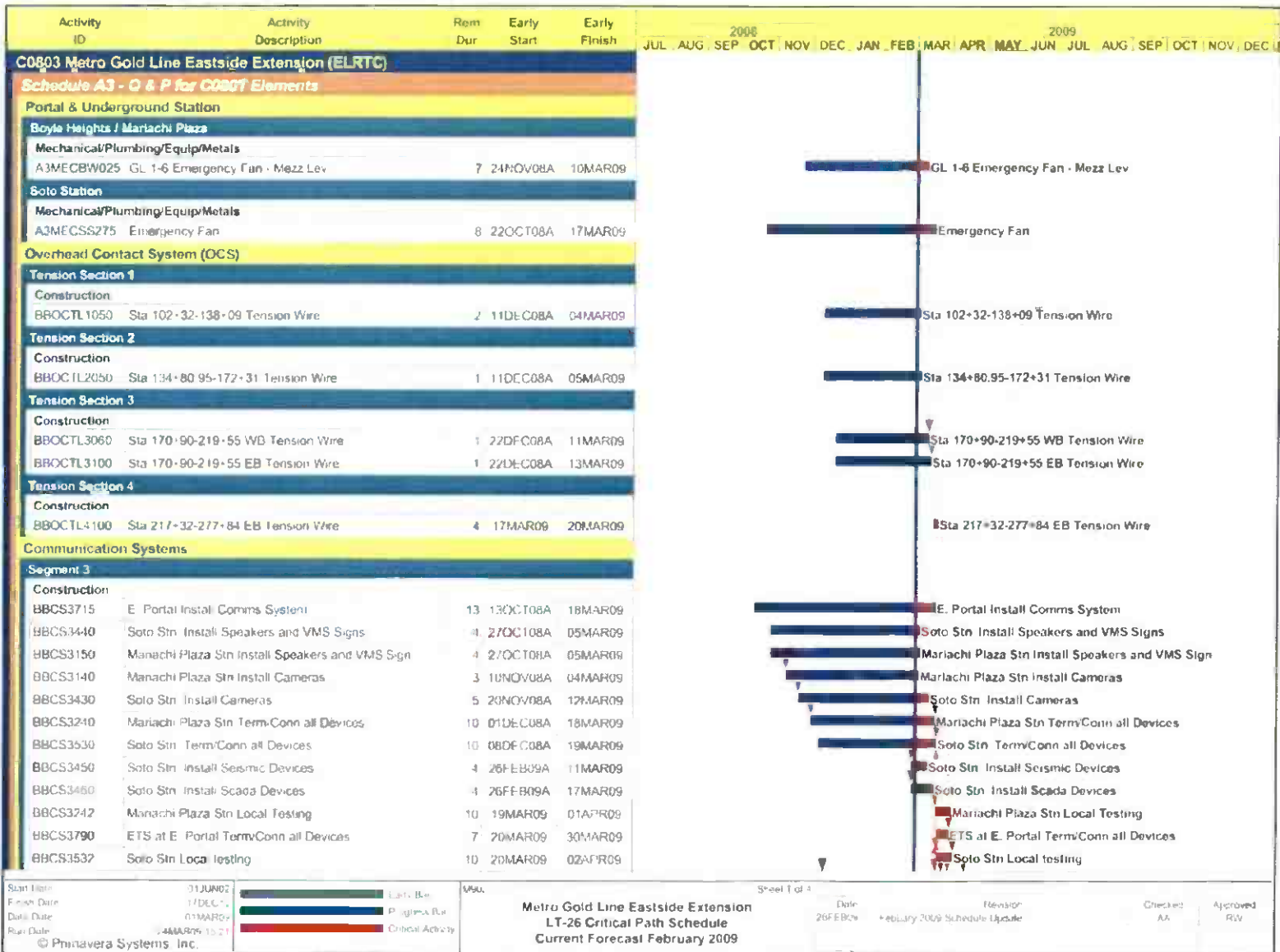
**KEY MILESTONE SCHEDULE SIX-MONTH LOOKAHEAD**

|  | Milestone Date | Feb-09 | Mar-09 | Apr-09 | May-09 | Jun-09 | Jul-09 |
|--|----------------|--------|--------|--------|--------|--------|--------|
| Completed Train Control Installation Throughout the Alignment  | 02/06/09 *     | ○      |        |        |        |        |        |
| Completed Canopy Support Structure at Boyle Heights/Mariachi Plaza Station   | 02/27/09       | ○      |        |        |        |        |        |
| Complete 34.5KV Feeder Cable Installation  | 03/02/09 *     |        | ○      |        |        |        |        |
| Complete Radio System Installation   | 03/12/09 *     |        | ○      |        |        |        |        |
| Start Systems Integration Testing Phase I (ELRTC)  | 03/13/09 *     |        | ○      |        |        |        |        |
| Submit All Testing Procedures  | 03/13/09 *     |        | ○      |        |        |        |        |
| Complete CCS Installation Throughout the Alignment   | 03/18/09 *     |        | ○      |        |        |        |        |
| Install Tunnel Portal Surveillance System  | 03/18/09 *     |        | ○      |        |        |        |        |
| Complete Street Improvements Throughout the Alignment  | 03/19/09 *     |        | ○      |        |        |        |        |
| Overhead Catenary Energized  | 03/26/09 *     |        | ○      |        |        |        |        |
| Complete Landscape at Both Portals   | 03/27/09       |        | ○      |        |        |        |        |
| Start Systems Integration Testing Phase II (Metro)   | 04/06/09 *     |        |        | ◆      |        |        |        |
| Complete Systems Installation at the ROCC  | 04/14/09 *     |        |        | ○      |        |        |        |
| Complete First Station Construction - Indiana  | 04/15/09       |        |        | ○      |        |        |        |
| Complete At-Grade Stations Canopy Installation   | 04/16/09 *     |        |        | ○      |        |        |        |
| C0803 Contractor Achieve Substantial Completion  | 04/29/09 *     |        |        | ○      |        |        |        |
| Begin Pre-Revenue Operations   | 05/16/09       |        |        |        | ◆      |        |        |
| Complete Fabrication and Delivery of Metro Art   | 05/16/09       |        |        |        | ◆      |        |        |
| Install Universal Fare System Throughout the Alignment   | 06/12/09       |        |        |        |        | ◆      |        |
| Line Ready for Revenue Operations (ROD)  | 07/15/09       |        |        |        |        |        | ◆      |
| Metro SCADA Contractor Complete Installation of New Expanded System  | 07/15/09       |        |        |        |        |        | ◆      |
| <div> <div>◆ LACMTA Staff Milestone</div> <div>○ Eastside LRT Constructors</div> <div>FTA</div> <div>FTA Approval</div> <div>△ Other Agencies</div> <div>* New Date</div> <div>M Metro</div> <div>LACMTA Board Approval</div> </div> |                |        |        |        |        |        |        |

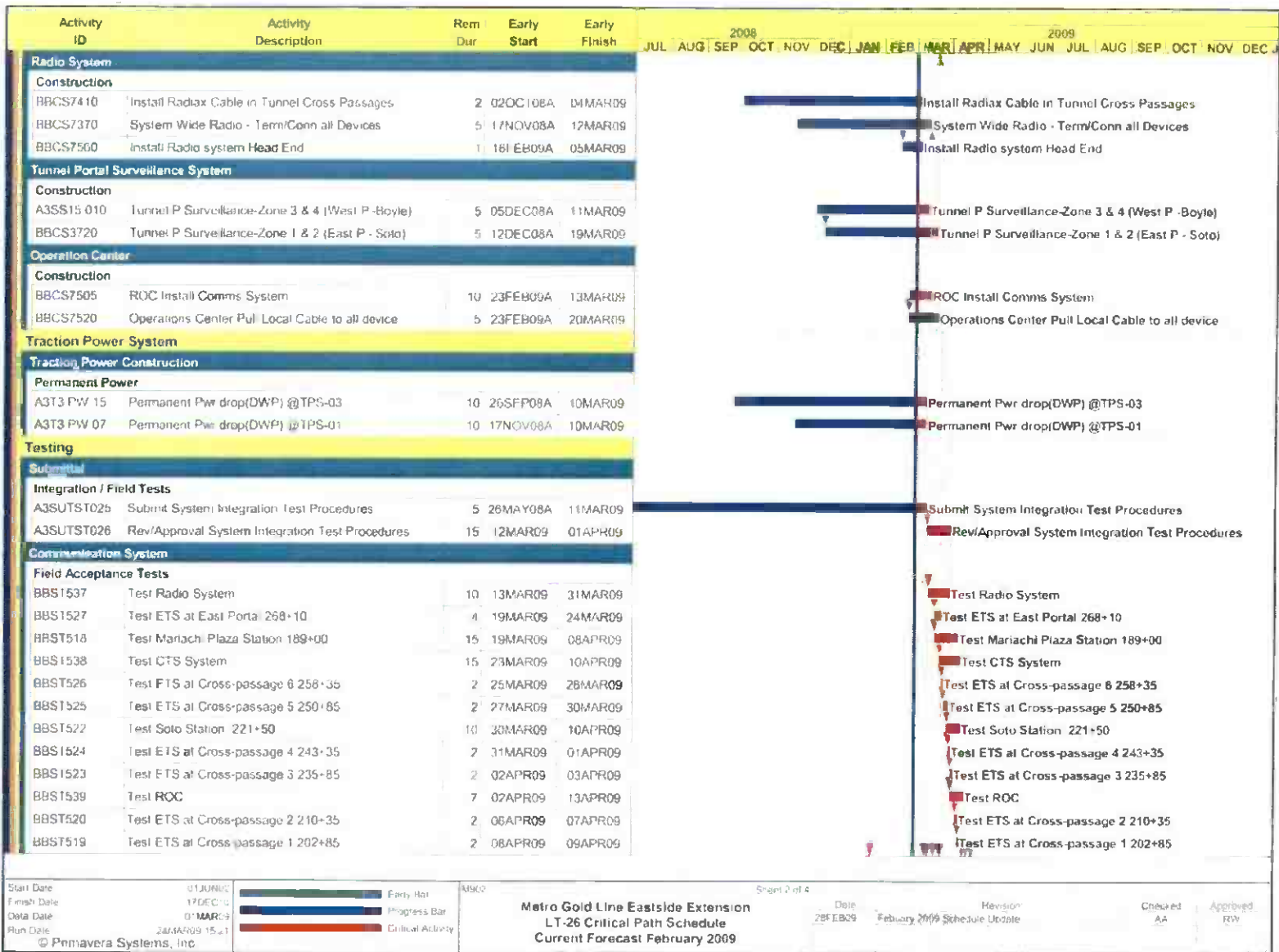
Six-month lookahead schedule for Contract C0803 reflects the contractor's current CPM schedule.



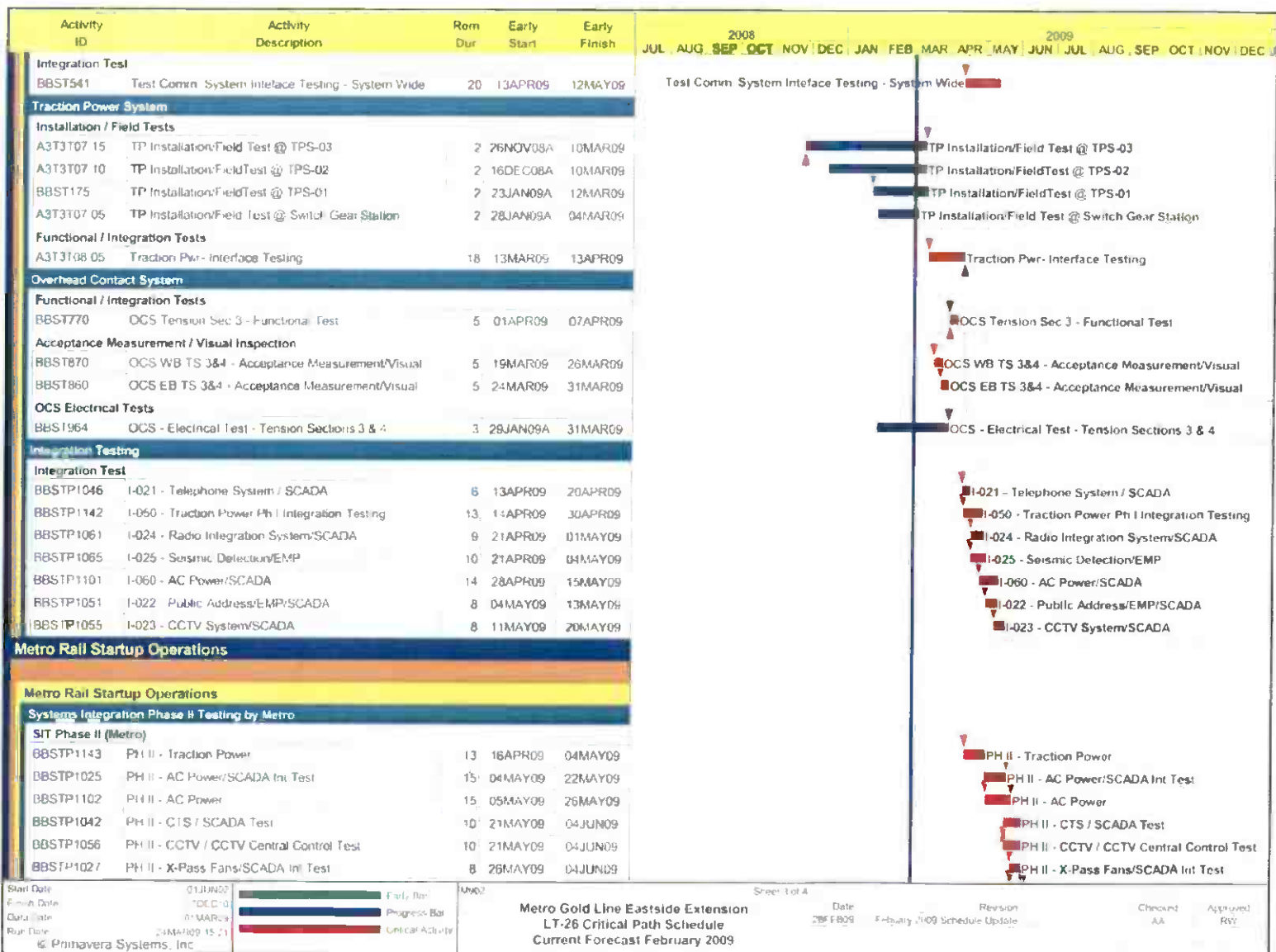
# PROJECT MASTER SCHEDULE CRITICAL PATH (1 of 4)



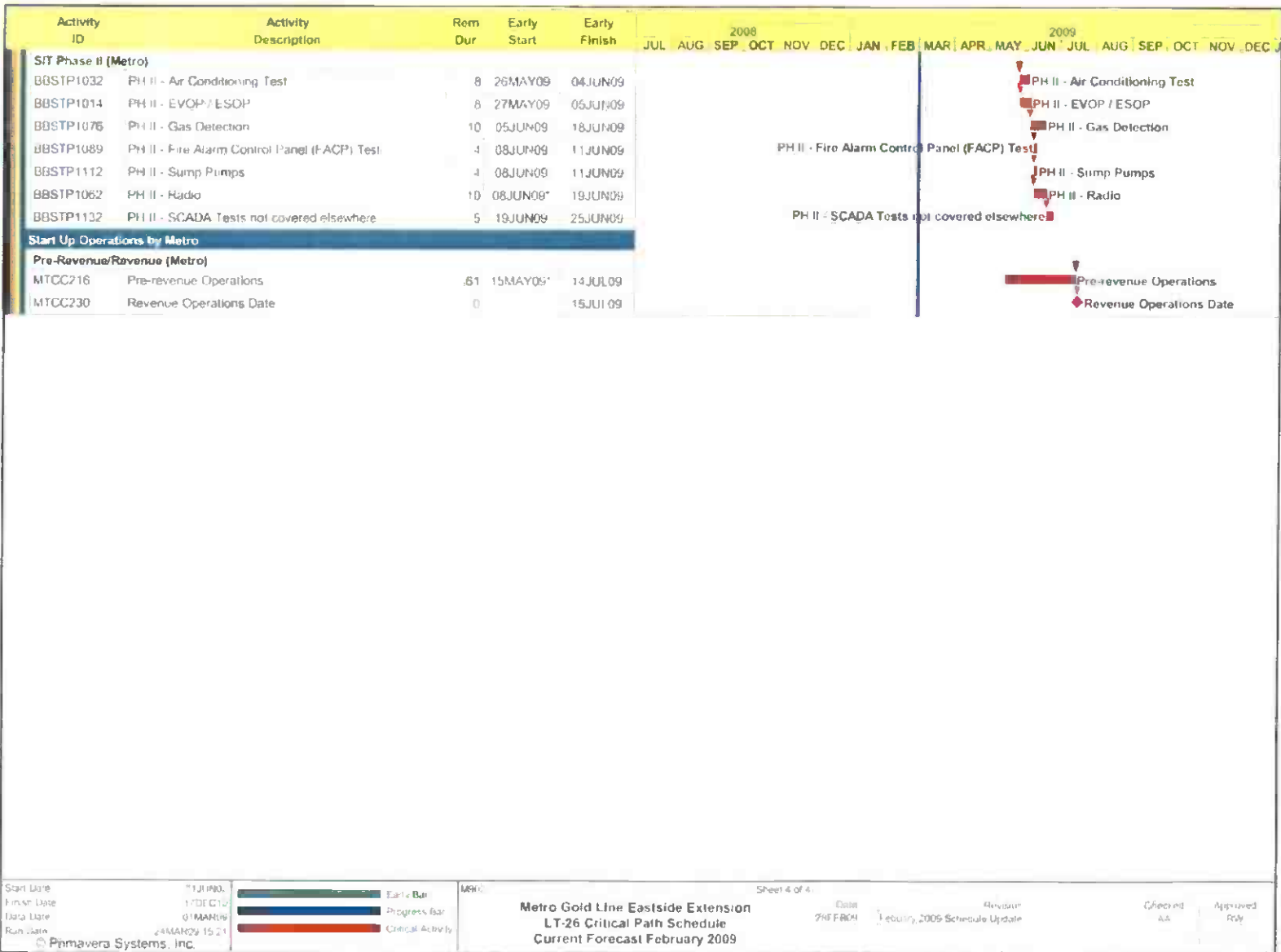
# PROJECT MASTER SCHEDULE CRITICAL PATH (2 of 4)



# PROJECT MASTER SCHEDULE CRITICAL PATH (3 of 4)



# PROJECT MASTER SCHEDULE CRITICAL PATH (4 of 4)



## **CRITICAL PATH NARRATIVE**

### **Current Critical Path Analysis**

The C0803 contractor (ELRTC) has completed the installation of emergency fans, ducts and sound attenuators at the Boyle Heights/Mariachi Plaza and Soto Stations. The assembly and erection of track dampers continued this period, as well as installation of exposed conduit, cable splicing and wire terminations at the Train and Communication Control (T&CC), auxiliary power, emergency fans, mechanical and electrical rooms. ELRTC is supporting the Department of Water and Power in energizing Traction Power Substations (TPS) # 1, 2 and 3. The substations are providing permanent power to the underground stations and the tunnels. The systems subcontractor is nearly complete with the Overhead Catenary System (OCS) and has begun the Local Field Acceptance Test (LFAT) program throughout the alignment.

ELRTC is reporting their overall progress to be twenty-eight days behind schedule with several Systems Integration Tests (SIT) scheduled to be completed in May 2009. The contractor is continuing mitigation measures with subcontractors to maintain longer shift hours and continued revising the testing schedule, which will support Metro's Systems Integration Testing Phase II and Pre-Revenue Operations. Metro remains confident that the time lost in the schedule can be mitigated without impacting the Revenue Operations Date (ROD).

There are several parallel critical paths in the current schedule. One is through commissioning and testing of TPS # 1, 2 and 3. Another is through installation and testing of the Overhead Contact System (OCS). One more is the communications installation at both underground stations, and installation of communications throughout the alignment. Local facilities testing are the last stage of the critical path prior to entering the final test stage, where Systems Integration Testing and Pre-Revenue Operations are conducted.

**Metro Gold Line Eastside Extension**  
**Monthly Project Status Report**

**February 2009**

**PROJECT COST STATUS**

**COST REPORT BY ELEMENT**  
**ORIGINAL SCOPE ACTIVITIES**  
DOLLARS IN THOUSANDS

| ELEMENT         | DESCRIPTION           | ORIGINAL BUDGET | CURRENT BUDGET |                | COMMITMENTS |                | EXPENDITURES  |                | CURRENT FORECAST |                | BUDGET / FORECAST VARIANCE |
|-----------------|-----------------------|-----------------|----------------|----------------|-------------|----------------|---------------|----------------|------------------|----------------|----------------------------|
|                 |                       |                 | PERIOD         | TO DATE        | PERIOD      | TO DATE        | PERIOD        | TO DATE        | PERIOD           | TO DATE        |                            |
| C               | CONSTRUCTION          | 633,221         | -              | 650,702        | 21          | 657,122        | 7,872         | 592,085        | -                | 650,702        | -                          |
| S               | SPECIAL CONDITIONS    | 19,494          | -              | 57,032         | -           | 50,766         | 416           | 39,077         | -                | 57,032         | -                          |
| R               | RIGHT-OF-WAY          | 40,358          | -              | 37,681         | -           | 37,779         | 4             | 37,044         | -                | 37,681         | -                          |
| P               | PROFESSIONAL SERVICES | 135,304         | -              | 135,860        | 13          | 134,687        | 1,600         | 123,914        | -                | 135,860        | -                          |
| PC              | PROJECT CONTINGENCY   | 60,254          | -              | 7,401          | -           | -              | -             | -              | -                | 7,401          | -                          |
| PR              | PROJECT REVENUE       | (4,617)         | -              | (4,662)        | -           | -              | -             | (44)           | -                | (4,662)        | -                          |
| <b>SUBTOTAL</b> |                       | <b>884,014</b>  | <b>-</b>       | <b>884,014</b> | <b>33</b>   | <b>880,355</b> | <b>9,892</b>  | <b>792,077</b> | <b>-</b>         | <b>884,014</b> | <b>-</b>                   |
| PF              | PROJECT FINANCE COST  | 14,800          | -              | 14,800         | 412         | 6,602          | 412           | 6,602          | -                | 14,800         | -                          |
| <b>TOTAL</b>    |                       | <b>898,814</b>  | <b>-</b>       | <b>898,814</b> | <b>446</b>  | <b>886,957</b> | <b>10,304</b> | <b>798,679</b> | <b>-</b>         | <b>898,814</b> | <b>-</b>                   |

NOTE: EXPENDITURES ARE CUMULATIVE THROUGH JANUARY 2009

**PROJECT COST ANALYSIS**

**Original Budget**

The Full Funding Grant Agreement (FFGA) was adopted June 1, 2004 in the amount of \$898.8 million. The Original Budget reflects the adopted FFGA.

**Current Budget and Current Forecast**

The Current Budget and Forecast remain the same at \$898.8 million.

**Commitments**

The Commitments increased by \$0.4 million this period primarily due to Finance Cost that reflects an interest payment. Interest earnings are not projected to be more than the interest costs. The \$887.0 million in Commitments to date represents 98.7% of the Original Budget.

**Expenditures**

Expenditures are cumulative through January 2009. The Expenditures increased by a total of \$10.3 million this period. In the Construction element there was an increase of \$7.9 million due to costs associated with Contract C0803 -Tunnel, Stations, Trackwork and Systems. In the Special Conditions element there was an increase of \$0.4 million primarily for costs associated with the 3<sup>rd</sup> Party Master Cooperative Agreements with the City of LA, and the Metro Art Program. In the Professional Services element there was an increase of \$1.6 million primarily for costs associated with Metro Project Administration, Design Support During Construction and Construction Management Services. In the Project Finance Cost element there was an increase of \$0.4 million that reflects an interest payment. The January 2009 invoice for Contract C0803 in the amount of \$5.2 million was posted in the Metro's Financial Information System (FIS) on February 12, 2009 and will be reflected in the next reporting period. The \$798.7 million in Expenditures to date represents 88.9% of the Original Budget.

## PROJECT COST STATUS

### COST REPORT BY ELEMENT CONCURRENT NON-FFGA PROJECT ACTIVITIES

DOLLARS IN THOUSANDS

| ELEM-<br>MENT | DESCRIPTION           | ORIGINAL<br>BUDGET | CURRENT BUDGET |         | COMMITMENTS |         | EXPENDITURES |         | CURRENT FORECAST |         | BUDGET /<br>FORECAST<br>VARIANCE |
|---------------|-----------------------|--------------------|----------------|---------|-------------|---------|--------------|---------|------------------|---------|----------------------------------|
|               |                       |                    | PERIOD         | TO DATE | PERIOD      | TO DATE | PERIOD       | TO DATE | PERIOD           | TO DATE |                                  |
| C             | CONSTRUCTION          | 18,000             | -              | 46,034  | 53          | 44,257  | 2,329        | 29,447  | -                | 46,034  | -                                |
| S             | SPECIAL CONDITIONS    | -                  | -              | 3,244   | (65)        | 2,618   | 1            | 2,325   | -                | 3,244   | -                                |
| R             | RIGHT-OF-WAY          | -                  | -              | 648     | -           | -       | -            | -       | -                | 648     | -                                |
| P             | PROFESSIONAL SERVICES | -                  | -              | 3,914   | (24)        | 3,399   | 69           | 1,566   | -                | 3,914   | -                                |
| PC            | PROJECT CONTINGENCY   | -                  | -              | 1,650   | -           | -       | -            | -       | -                | 1,650   | -                                |
| PR            | PROJECT REVENUE       | -                  | -              | (4,087) | -           | (5,079) | -            | (279)   | -                | (4,087) | -                                |
| SUBTOTAL      |                       | 18,000             | -              | 51,403  | (36)        | 45,195  | 2,400        | 33,059  | -                | 51,403  | -                                |
| PF            | PROJECT FINANCE COST  | -                  | -              | -       | -           | -       | -            | -       | -                | -       | -                                |
| TOTAL         |                       | 18,000             | -              | 51,403  | (36)        | 45,195  | 2,400        | 33,059  | -                | 51,403  | -                                |

NOTE: EXPENDITURES ARE CUMULATIVE THROUGH JANUARY 2009

## PROJECT COST ANALYSIS

### Original Budget

The Metro Board adopted the Original Budget of \$18.0 million on March 24, 2005.

### Current Budget and Current Forecast

The Current Budget and Forecast remain the same at \$51.4 million.

### Commitments

The Commitments decreased by \$36k this period primarily due to less than anticipated requirement for environmental compliance services. The \$45.2 million in Commitments to date represents 87.9% of the Current Budget.

### Expenditures

Expenditures are cumulative through January 2009. The Expenditures increased by \$2.4 million this period primarily for construction of the Ramona Opportunity High School, Metro Project Administration, and Community Relations. The January 2009 invoice for Contract C0803 in the amount of \$0.4 million was posted in the Metro's Financial Information System (FIS) on February 12, 2009 and will be reflected in the next reporting period. The \$33.1 million in Expenditures to date represents 64.3% of the Current Budget.

**Metro Gold Line Eastside Extension**  
**Monthly Project Status Report**

**February 2009**

**FINANCIAL/GRANT STATUS – ORIGINAL SCOPE ACTIVITIES**

| FEBRUARY 2009                     |                           | STATUS OF FUNDS BY SOURCE            |                                    |                    |       |                     |         |                                    |       |  |  |
|-----------------------------------|---------------------------|--------------------------------------|------------------------------------|--------------------|-------|---------------------|---------|------------------------------------|-------|--|--|
| SOURCE                            | (A)<br>ORIGINAL<br>BUDGET | (B)<br>TOTAL<br>FUNDS<br>ANTICIPATED | (C)<br>TOTAL<br>FUNDS<br>AVAILABLE | (D)<br>COMMITMENTS | (D/B) | (E)<br>EXPENDITURES | (E/B)   | (F)<br>BILLED TO FUNDING<br>SOURCE | (F/B) |  |  |
|                                   |                           |                                      |                                    | \$                 | %     | \$                  | %       | \$                                 | %     |  |  |
| FEDERAL - SECTION 5309 NEW START  | \$490.700                 | \$490.700                            | \$333.593                          | \$489.483          | 100%  | \$401.205           | 82% (1) | \$392.176                          | 80%   |  |  |
| FED - SECTION 5309 FIXED GUIDEWAY | \$23.100                  | \$12.000                             | \$12.000                           | \$12.000           | 100%  | \$12.000            | 100%    | \$12.000                           | 100%  |  |  |
| FEDERAL - CMAQ                    | \$10.300                  | \$10.300                             | \$10.276                           | \$10.276           | 100%  | \$10.276            | 100%    | \$10.276                           | 100%  |  |  |
| REGIONAL IMPROVEMENT PROG - FED   | \$179.600                 | \$4.600                              | \$4.600                            | \$4.600            | 100%  | \$4.600             | 100%    | \$4.600                            | 100%  |  |  |
| REGIONAL IMP PROG - STATE         | \$0.600                   | \$175.600                            | \$175.600                          | \$175.600          | 100%  | \$175.600           | 100%    | \$175.600                          | 100%  |  |  |
| STATE TCRP                        | \$45.000                  | \$45.000                             | \$45.000                           | \$45.000           | 100%  | \$45.000            | 100%    | \$45.000                           | 100%  |  |  |
| PROP A 35% / PROP C 40%/PROP 25%  | \$124.614                 | \$135.714                            | \$133.296                          | \$133.296          | 98%   | \$133.296           | 98%     | \$133.296                          | 98%   |  |  |
| LEASE REVENUES                    | \$10.100                  | \$10.100                             | \$10.100                           | \$10.100           | 100%  | \$10.100            | 100%    | \$10.100                           | 100%  |  |  |
| ACCRUALS                          |                           |                                      |                                    |                    |       |                     |         |                                    |       |  |  |
| SUB-TOTAL                         | \$884.014                 | \$884.014                            | \$724.465                          | \$880.355          | 100%  | \$792.077           | 90%     | \$783.048                          | 89%   |  |  |
| PROP A / PROP C (INTEREST COST)   | \$14.800                  | \$14.800                             | \$6.602                            | \$6.602            | 45%   | \$6.602             | 45%     | \$4.690                            | 32%   |  |  |
| TOTAL                             | \$898.814                 | \$898.814                            | \$731.067                          | \$886.957          | 99%   | \$798.679           | 89%     | \$787.738                          | 88%   |  |  |

NOTE: EXPENDITURES ARE CUMULATIVE THROUGH JANUARY 2009.  
(1) BILLED EXPENDITURES IN EXCESS OF FUNDS AVAILABILITY ARE TEMPORARILY FUNDED THROUGH BRIDGE FINANCING.

**STATUS OF FUNDS ANTICIPATED**

**FEDERAL SECTION 5309 NEW STARTS:** LACMTA has received an appropriation of \$333.6M through FY08. LACMTA submitted a grant application for \$33.4M in January 2009. Grant approval is expected in May 2009.



**FINANCIAL/GRANT STATUS  
CONCURRENT NON-FFGA PROJECT ACTIVITIES**

**FEBRUARY 2009**

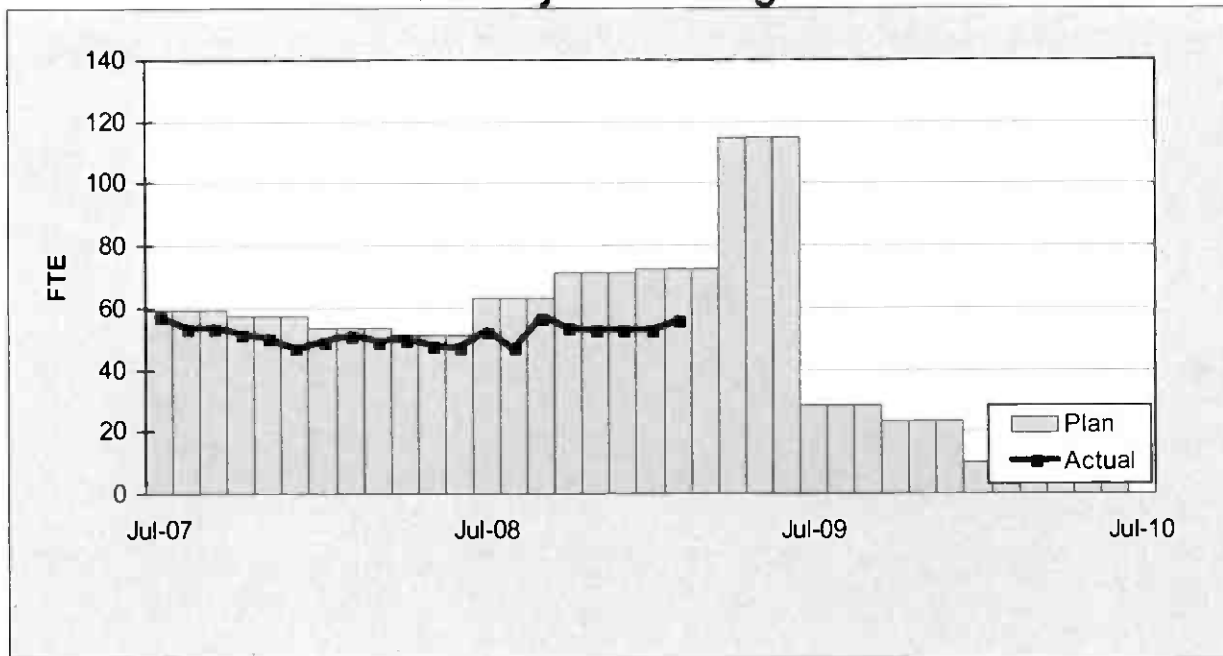
**STATUS OF FUNDS BY SOURCE**

| SOURCE       | (A)<br>APPROVED<br>BUDGET | (B)<br>TOTAL<br>FUNDS<br>ANTICIPATED<br>(1) | (C)<br>TOTAL<br>FUNDS<br>AVAILABLE | (D)<br>COMMITMENTS<br>\$ | (D/B)<br>% | (E)<br>EXPENDITURES<br>\$ | (E/B)<br>% | (F)<br>BILLED TO FUNDING<br>SOURCE<br>\$ | (F/B)<br>% |
|--------------|---------------------------|---|------------------------------------|--------------------------|------------|---------------------------|------------|--|------------|
|              |                           |   |                                    |                          |            |                           |            |  |            |
| PROP C 40%   | \$14.000                  | \$22.400                                    | \$20.243                           | \$20.243                 | 90%        | \$10.373                  | 46%        | \$3.805                                  | 17%        |
| PROP C 10%   | \$4.000                   | \$4.300                                     | \$4.300                            | \$0.866                  |            | \$0.616                   |            | \$0.616                                  |            |
| STATE TCR    | \$0.000                   | \$24.086                                    | \$24.086                           | \$24.086                 | 100%       | \$22.070                  | 92%        | \$22.070                                 | 92%        |
| STATE TSA    | \$0.000                   | \$0.617                                     | \$0.617                            | \$0.000                  | 0%         | \$0.000                   | 0%         | \$0.000                                  | 0%         |
| <b>TOTAL</b> | <b>\$18.000</b>           | <b>\$51.403</b>                             | <b>\$49.246</b>                    | <b>\$45.195</b>          | <b>88%</b> | <b>\$33.059</b>           | <b>64%</b> | <b>\$26.491</b>                          | <b>52%</b> |

NOTE: EXPENDITURES ARE CUMULATIVE THROUGH JANUARY 2009.

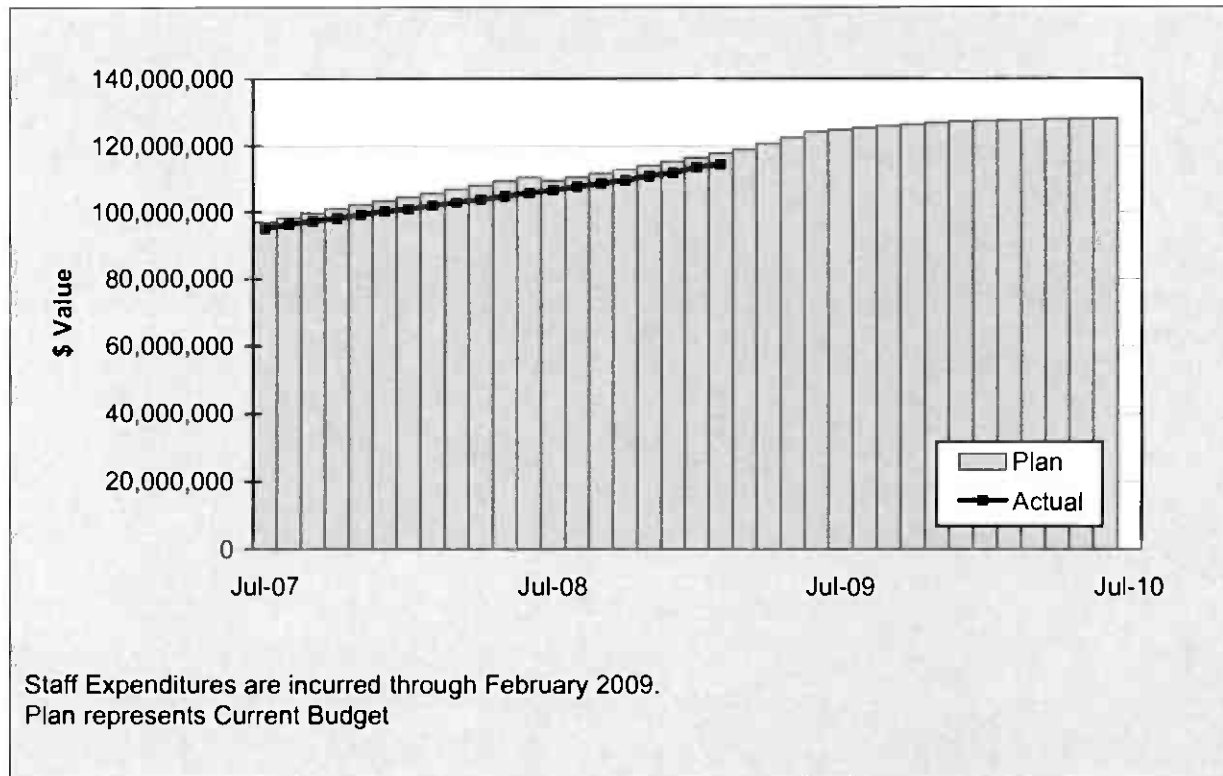
## STAFFING STATUS

### Total Project Staffing - FTES



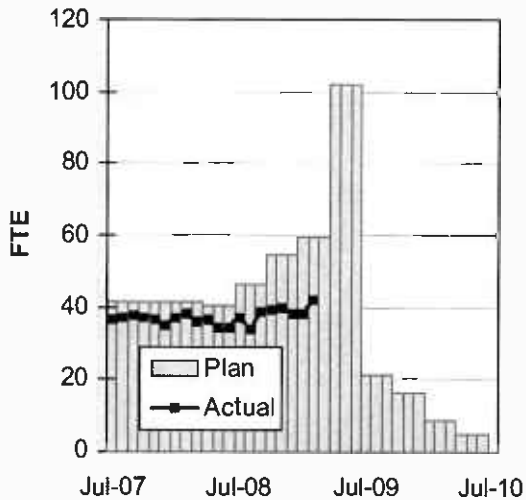
## STAFFING STATUS

### TOTAL PROJECT STAFFING COST

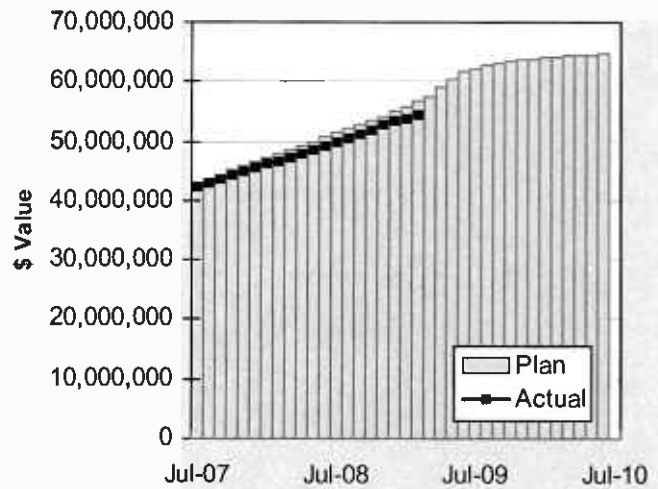


## STAFFING STATUS

**DIRECT AGENCY - FTES**

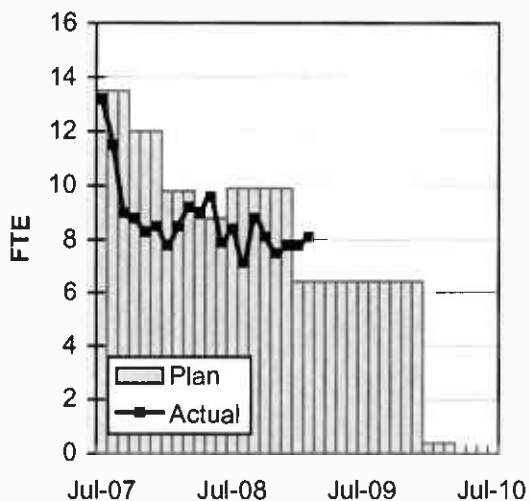


**DIRECT AGENCY - COST**

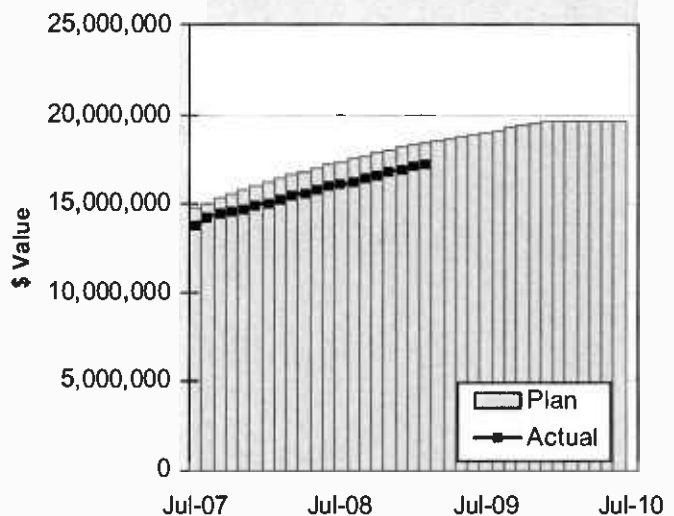


Staff Expenditures are incurred through February 2009.  
Plan represents Current Budget

**CONSTRUCTION MGMT - FTES**



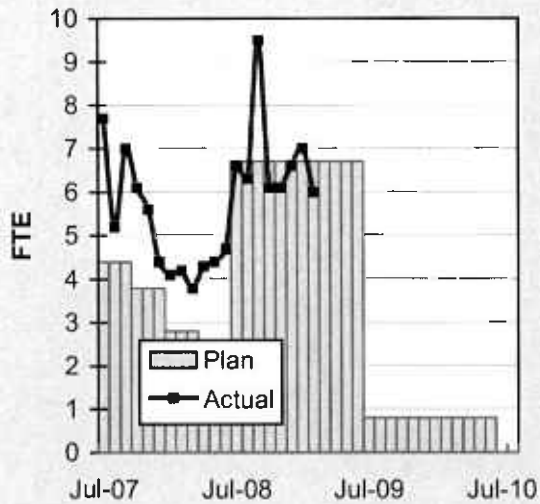
**CONSTRUCTION MGMT - COST**



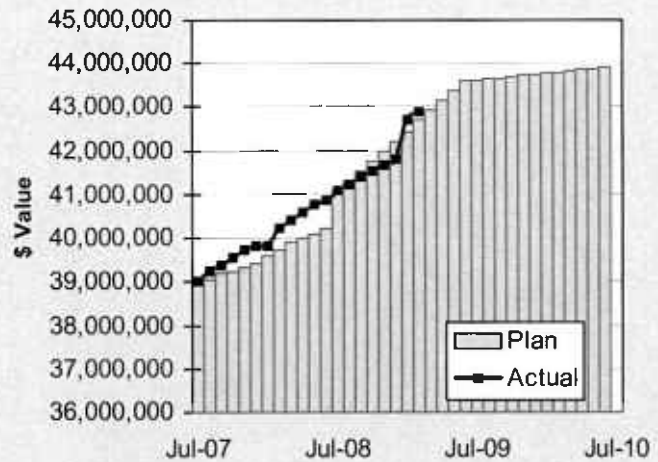
Staff Expenditures are incurred through February 2009.  
Plan represents Current Budget.

## STAFFING STATUS

ELRT PARTNERS - FTES



ELRT PARTNERS - COST



Staff Expenditures are incurred through February 2009.  
Plan represents Current Budget

## REAL ESTATE STATUS

- For C0803, the tunnel portion of the alignment, 40 parcels were required for acquisition (11 full takes, 4 partial takes, 20 sub-surface easements/temporary construction easements, 3 sub-surface easements/building protection, and 2 building protections).
- For C0803, the at-grade portion of the alignment, 27 parcels were required for acquisition (17 full takes, 9 partial takes and 1 surface easement). Nine parcels were required for the LAUSD Ramona Opportunity High School site reconfiguration.
- For C0802, 2 parcels were required (1 surface easement and 1 full take parcel).
- Two Encroachment Permits were obtained from Caltrans for the C0803-Tunnel. Three street closures were obtained from the City of LA.

### REAL ESTATE ACQUISITION SCHEDULE SUMMARY

| <i>Number of<br/>Parcels</i> | Required | Acquired | On Schedule | Behind Schedule |                          |
|------------------------------|----------|----------|-------------|-----------------|--------------------------|
|                              |          |          |             | Number          | Avg.<br>Calendar<br>Days |
| This Period                  | 69       | 69       | 0           | 0               | 0                        |
| Last Period                  | 69       | 69       | 0           | 0               | 0                        |

### REAL ESTATE STATUS TO DATE BY CONTRACT ACQUISITION PHASE

| CONTRACT NO.   | Number of<br>Parcels<br>(A+B+C+D+E) | Agreements<br>Signed<br>(A) | Parcels in<br>Condemnation<br>(B) | Under<br>Negotiation<br>(C) | In Appraisal<br>Process<br>(D) | Inactive<br>Parcels<br>(E) | Parcels<br>Available |
|----------------|-------------------------------------|-----------------------------|-----------------------------------|-----------------------------|--------------------------------|----------------------------|----------------------|
| C0803-Tunnel   | 40                                  | 40                          | 0                                 | 0                           | 0                              | 0                          | 40                   |
| C0803-At-Grade | 27                                  | 27                          | 0                                 | 0                           | 0                              | 0                          | 27                   |
| C0802          | 2                                   | 2                           | 0                                 | 0                           | 0                              | 0                          | 2                    |
| TOTAL          | 69                                  | 69                          | 0                                 | 0                           | 0                              | 0                          | 69                   |
| LAST PERIOD    | 69                                  | 69                          | 0                                 | 0                           | 0                              | 0                          | 69                   |

## **ENVIRONMENTAL STATUS**

- Held meetings with Evergreen Cemetery and Kemp Monument to schedule excavation work for the Memorial Wall and prepare for the fabrication of the bronze memorial plaques.
- A purchase order was issued for the fabrication of four enamel panels depicting copies of the panels from the Los Angeles Crematorium Chapel.
- Cal State Los Angeles informed Metro they would no longer pursue research on the human remains and artifacts.

## **COMMUNITY RELATIONS STATUS**

- Distributed four construction notices which reached approximately 575 residences/businesses. Activities included street closures, traffic switches, and crosswalk installations.
- Met with 33 residents/business owners to coordinate construction activities.
- Provided construction updates at the Executive RAC and Review Advisory Committee Meetings.

## **QUALITY ASSURANCE STATUS**

- Continued to review the Design Builder's Monthly Asphalt, Concrete Compressive Strength and Soils Compaction test report summaries - areas of concern are coordinated to resolution with the onsite lab representative.
- Conducted verification testing of Design Builder's special inspections utilizing an independent testing laboratory technician; no issues to report.
- The results of field surveillance activities are documented in Weekly Surveillance Reports, including color digital pictures identifying sites of surveillance and issues of concern.

## **SAFETY STATUS**

- Participated in weekly progress meetings with Construction Managers and ELRTC management personnel to discuss safety related issues and construction schedule.
- Conducted specific Tunnel Safety Awareness and Red Tag Clearance training for Metro's IPMO staff.
- Participated in weekly Rail Activation Meetings and training sessions.
- Participated in ELRTC's weekly supervisory Tool Box safety meetings.
- Monitored construction activities on a daily basis, including weekends, to ensure contractor compliance with Contract Specification.
- ELRTC and their subcontractors reported one recordable incident and 63,427 work hours for the month of February 2009. A total of forty (40) recordable incidents have occurred Project to Date. Total Project to Date work hours are 3,883,372. Injury Rates for Recordable incidents are 2.0; well below the published incident rate of 5.1.

## **ART DEVELOPMENT STATUS**

- Coordination meetings were held with Metro Construction and ELRTC for artwork fabrication/installation schedules for eight stations.

**THIRD PARTY AGREEMENT STATUS**

| Third Party                      | Type of Agreement | Forecast Execution Date | Required Need Date | Status/ Comments  |
|----------------------------------|-------------------|-------------------------|--------------------|---|
| City of Los Angeles              | Amendment         | Completed               | N/A                | Executed December 2002.   |
| Los Angeles County               | Master            | Completed               | N/A                | Executed April 2003.  |
| Caltrans (All Projects)          | Master            | Completed               | N/A                | Executed July 2003.   |
| Caltrans (101)                   | Design            | Completed               | N/A                | Executed July 2003.   |
| Caltrans (101)                   | Construction      | Completed               | N/A                | Executed September 2003.  |
| Caltrans (101)                   | Maintenance       | 3/09                    | Project Completion | The initial negotiation meeting was held on 1/9/03. LACMTA received a draft from Caltrans on 1/22/04. LACMTA reviewed and submitted the agreement to Caltrans on 2/10/04. A follow up call was made on 10/20/05 but no response to date.  |
| LADWP (Water/Power)              | Amendment         | 3/09                    | *6/04              | LACMTA Management, County Counsel, and LACMTA Board staff have participated in meetings with DWP to complete negotiations, since the "Deadline and Delay" clause is not acceptable to LADWP. Alternative language was forwarded to LACMTA Management and County Counsel for review on 10/7/05. LACMTA CEO is to speak with LADWP CEO. |
| So. Cal. Edison Co.              | Amendment         | N/A                     | N/A                | SCE Executive Legal Branch stated on 2/25/05 they have no intention of signing agreement.   |
| The Gas Company                  | Amendment         | Completed               | N/A                | Executed May 2005.  |
| SBC/AT & T                       | Amendment         | Completed               | N/A                | Executed May 2005. SBC has been acquired by AT&T and has formed a new corporation TCM for work in Southern California. A new agreement has been negotiated with Metro and TCM, which was approved by the Metro Board in April. The new agreement mirrors the SBC agreement except for some minor changes in the insurance language.   |
| Adelphia Cable Company           | Amendment         | 3/09                    | *6/04              | LACMTA received a draft from Adelphia for review. LACMTA Management and County Counsel reviewed the amendment and returned the document to Adelphia with comments. Adelphia's Legal Department is reviewing the document and follow-up calls were made on 10/20/05 and 11/16/05.  |
| Calif Wtr Service Co             | Master            | Completed               | N/A                | Executed May 2005.  |
| L.A. County Sanitation Districts | N/A               | N/A                     | N/A                | In a letter dated 3/26/03, the Sanitation District stated that there is not a need for an agreement since there are no relocations related to their facilities. The Sanitation District will review submittals related to encasements of their facilities on Indiana Street.  |
| MCI Worldcom                     | Amendment         | Completed               | N/A                | Executed May 2005.  |
| Metropolitan Wtr Dist            | Amendment         | Completed               | N/A                | Executed May 2003.  |



**THIRD PARTY AGREEMENT STATUS**

| Third Party                    | Type of Agreement | Forecast Execution Date | Required Need Date | Status/ Comments  |
|--------------------------------|-------------------|-------------------------|--------------------|---|
| Verizon Wireless               | Amendment         | 3/09                    | *6/04              | The revised draft amendment was hand delivered to Verizon on 11/19/03 and an electronic copy was sent to them 2/19/04. Verizon did respond with comments, which were reflected in a revised agreement sent 4/05. Verizon legal is completing final review. Follow up calls were made on 10/20/05 and 11/16/05. Verizon has now joined MCI and once the legal work is complete in late February 2006, LACMTA may be able to use the MCI Agreement for Verizon work. E-mailed MCI Agreement to Verizon Representative for consideration as overall agreement covering Verizon and MCI as the new Verizon. |
| GST                            | N/A               |                         |                    | Facilities are not impacted by Eastside Construction  |
| Exxon Mobil Oil Company        | N/A               |                         |                    | Facilities are not impacted by Eastside Construction  |
| Pacific Pipeline Company       | N/A               |                         |                    | Facilities are not impacted by Eastside Construction  |
| Kinder Morgan Pipeline Company | N/A               |                         |                    | Facilities are not impacted by Eastside Construction  |
| Tosco Refining Company         | N/A               |                         |                    | Facilities are not impacted by Eastside Construction  |
| Equilon Pipeline Company       | N/A               |                         |                    | Facilities are not impacted by Eastside Construction  |
| Level 3 Communications         | N/A               |                         |                    | Facilities are not impacted by Eastside Construction  |
| Broadwing Communications       | N/A               |                         |                    | Facilities are not impacted by Eastside Construction  |
| Eller Media                    | N/A               |                         |                    | Facilities are not impacted by Eastside Construction  |

\* Work has been performed under the current MCA.

**Metro Gold Line Eastside Extension  
Monthly Project Status Report**

**February 2009**

**CPUC CROSSING SUMMARY**

| Batch               | Application Status | Initial Package Submittal to MTA | Field Diagnostic Meeting | Revised Drawings Due to MTA | Draft Write-up to MTA | Draft Package Sumbittal to PUC Local office and Agencies | Final Package Submittal to PUC | CPUC Final Approval |
|---------------------|--------------------|----------------------------------|--------------------------|-----------------------------|-----------------------|--|--------------------------------|---------------------|
| 1                   | Complete           | 8/5/02                           | 8/12/02                  | 8/26/02                     | 9/6/02                | 9/6/02   | 9/6/2002                       | Approved            |
| 2                   | Complete           | 10/4/02                          | 10/11/02                 | 10/25/02                    | 11/6/02               | 11/22/02   | 11/22/2002                     | Approved            |
| 3                   | Complete           | 2/6/03                           | 2/27/03                  | 3/10/03                     | 1/27/03               | 4/11/02  | 4/18/2003                      | Approved            |
| 4                   | Complete           | 12/14/02                         | 1/15/03                  | 1/29/03                     | 11/13/02              | 5/5/03   | 6/18/2003                      | Approved            |
| 4A                  | Complete           | 1/24/03                          | 1/29/03                  | 3/14/03                     | 2/7/03                | 9/5/03   | 1/23/2004                      | Approved            |
| 6                   | Complete           | 3/19/03                          | 3/26/03                  | 6/20/03                     | 2/7/03                | 9/5/03   | 9/12/2003                      | Approved            |
| 7                   | Complete           | 12/11/02                         | 12/18/02                 | 3/31/03                     | 2/7/03                | 5/5/03   | 7/25/2003                      | Approved            |
| 8                   | Complete           | 11/26/02                         | 12/18/02                 | 3/31/03                     | 11/15/02              | 6/6/03   | 5/21/2004                      | Approved            |
| 9                   | Complete           | 1/20/03                          | 1/29/03                  | 3/31/03                     | 11/22/02              | 8/29/03  | 9/12/2003                      | Approved            |
| 10                  | Complete           | 12/11/03                         | 12/18/02                 | 3/10/03                     | 11/22/02              | 5/5/03   | 8/29/2003                      | Approved            |
| 11                  | Complete           | 2/13/03                          | 2/27/03                  | 4/18/03                     | 12/6/02               | 6/6/03   | 8/29/2003                      | Approved            |
| 12                  | Complete           | 2/13/03                          | 2/27/03                  | 4/18/03                     | 12/13/02              | 6/6/03   | 9/5/2003                       | Approved            |
| 13                  | Complete           | 2/6/03                           | 2/20/03                  | 4/18/03                     | 2/21/03               | 6/6/03   | 9/1/2004                       | Approved            |
| 14                  | Complete           | 1/8/03                           | 1/15/03                  | 3/14/03                     | 11/12/02              | 8/29/03  | 10/30/2003                     | Approved            |
| 15                  | Complete           | 2/26/03                          | N/A                      | N/A                         | 2/21/03               | 6/6/03   | 8/29/2003                      | Approved            |
| 16                  | Complete           | 2/26/03                          | N/A                      | N/A                         | 2/28/03               | 6/6/03   | 8/29/2003                      | Approved            |
| 17                  | Complete           | 1/8/03                           | 1/15/03                  | N/A                         | 2/14/03               | 5/5/03   | 6/13/2003                      | Approved            |
| 18                  | Complete           | 1/8/03                           | 1/15/03                  | 3/20/03                     | 2/14/03               | 5/5/03   | 6/13/2003                      | Approved            |
| Agency/ Responsible |                    | ELRTP                            | MTA                      | ELRP                        | ELRTP                 | MTA  | MTA                            |                     |

Batch No. 5 has been removed, as the Midway Yard will be utilized.

**SHADED AREAS REPRESENTS COMPLETION**

All applications are approved.

| Batch Descriptions |                                       |                            |  |
|--------------------|---------------------------------------|----------------------------|--|
| 1                  | 1st / Alameda                         | 10                         | 3rd / Ford                                 |
| 2                  | Alameda / Temple                      |                            | 3rd / McDonnel                             |
|                    | 1st / Hewitt                          | 11                         | 3rd / Arizona                              |
|                    | Ped Crossings @ 1st / Alameda Station |                            | 3rd / Mednik                               |
| 3                  | 1st / Vignes                          |                            | 3rd / Civic Center Drive                   |
| 4                  | 1st / Lorena                          |                            | 3rd / La Verne                             |
| 4A                 | Indiana/1st                           | 12                         | 3rd / Driveways to Sherriff's Station      |
|                    | Indiana/3rd                           |                            | 3rd / Wood / Via Corona / Pomona / Beverly |
|                    | Indiana Pedestrian Crossing           | 13                         | 3rd / 60 Fwy WB Connector                  |
| 6                  | 1st / Mission                         |                            | 3rd / 60 Fwy over ELRT                     |
|                    | 1st / Anderson                        |                            | 3rd / 710 Fwy SW Connector                 |
|                    | 1st / Clarence                        |                            | 3rd / Bridge over 710 Fwy                  |
|                    | 1st / Utah                            | 3rd / 710 Fwy SE Connector |  |
|                    | 1st/Gless Pedestrian Crossing         | 14                         | Union Station Service Road                 |
|                    |                                       | 15                         | 1st / Santa Fe                             |
| 7                  | 3rd / Rowan                           |                            | 1st / Myers                                |
| 8                  | 3rd / Gage                            | 16                         | 1st / MTA                                  |
|                    | 3rd / 60 Fwy WB Ramps                 |                            | 1st / BNSF                                 |
|                    | 3rd /Downey                           |                            | 1st / Union Pacific                        |

## CONTRACT C0802 STATUS

| <b>Description: 101 Freeway Bridge Overcrossing</b><br><b>Contractor: Brutoco Engineering &amp; Construction</b>   |                               | <b>Contract No. C0802</b><br><b>Status as of: February 27, 2009</b>   |                     |          |                 |  |  |                      |                               |                   |                     |                            |                 |                            |          |                                    |          |                   |      |  |          |    |          |          |      |  |          |    |          |          |      |
|--|-------------------------------|---|---------------------|----------|-----------------|--|--|----------------------|-------------------------------|-------------------|---------------------|----------------------------|-----------------|----------------------------|----------|------------------------------------|----------|-------------------|------|--|----------|----|----------|----------|------|--|----------|----|----------|----------|------|
| <b>Progress/Work Completed:</b><br><br>* Bridge work was completed in March 2007<br>* Plant Maintenance period achieved November 2007<br><br><br><b>Areas of Concern:</b><br><br>* None  |                               | <b>Major Activities (In Progress):</b><br><br>* None<br><br><br><b>Major Activities Next Period:</b><br><br>* None  |                     |          |                 |  |  |                      |                               |                   |                     |                            |                 |                            |          |                                    |          |                   |      |  |          |    |          |          |      |  |          |    |          |          |      |
| <b>Schedule Summary:</b><br><br>Date of Award: 09/07/04<br>Notice to Proceed: 09/22/04<br><br>Original Contract Duration: 700 CD<br>Current Contract Duration: 775 CD<br>Elapsed Time from NTP: 904 CD *<br><br>* Note: Elapsed time to Milestone # 1 completion |                               | <table border="1" style="width: 100%; border-collapse: collapse;"> <thead> <tr> <th></th> <th style="text-align: center;">Original<br/>Contract<br/>Dates</th> <th style="text-align: center;">Time<br/>Extension</th> <th style="text-align: center;">Current<br/>Contract</th> <th style="text-align: center;">Forecast</th> <th style="text-align: center;">Variance<br/>CDs</th> </tr> </thead> <tbody> <tr> <td>Notice to Proceed</td> <td style="text-align: center;">09/22/04</td> <td style="text-align: center;">0</td> <td style="text-align: center;">09/22/04</td> <td style="text-align: center;">09/22/04</td> <td style="text-align: center;">0</td> </tr> <tr> <td>Milestone 1 - Complete Abutment No. 10</td> <td style="text-align: center;">06/26/06</td> <td style="text-align: center;">49</td> <td style="text-align: center;">08/14/06</td> <td style="text-align: center;">03/15/07</td> <td style="text-align: center;">-213</td> </tr> <tr> <td>Milestone 2- Complete All Work Without Plant Establishment</td> <td style="text-align: center;">08/23/06</td> <td style="text-align: center;">75</td> <td style="text-align: center;">11/06/06</td> <td style="text-align: center;">08/06/07</td> <td style="text-align: center;">-273</td> </tr> </tbody> </table> |                     |          |                 |  |  |                      | Original<br>Contract<br>Dates | Time<br>Extension | Current<br>Contract | Forecast                   | Variance<br>CDs | Notice to Proceed          | 09/22/04 | 0                                  | 09/22/04 | 09/22/04          | 0    | Milestone 1 - Complete Abutment No. 10 | 06/26/06 | 49 | 08/14/06 | 03/15/07 | -213 | Milestone 2- Complete All Work Without Plant Establishment | 08/23/06 | 75 | 11/06/06 | 08/06/07 | -273 |
|  | Original<br>Contract<br>Dates | Time<br>Extension   | Current<br>Contract | Forecast | Variance<br>CDs |  |  |                      |                               |                   |                     |                            |                 |                            |          |                                    |          |                   |      |  |          |    |          |          |      |  |          |    |          |          |      |
| Notice to Proceed  | 09/22/04                      | 0   | 09/22/04            | 09/22/04 | 0               |  |  |                      |                               |                   |                     |                            |                 |                            |          |                                    |          |                   |      |  |          |    |          |          |      |  |          |    |          |          |      |
| Milestone 1 - Complete Abutment No. 10   | 06/26/06                      | 49  | 08/14/06            | 03/15/07 | -213            |  |  |                      |                               |                   |                     |                            |                 |                            |          |                                    |          |                   |      |  |          |    |          |          |      |  |          |    |          |          |      |
| Milestone 2- Complete All Work Without Plant Establishment   | 08/23/06                      | 75  | 11/06/06            | 08/06/07 | -273            |  |  |                      |                               |                   |                     |                            |                 |                            |          |                                    |          |                   |      |  |          |    |          |          |      |  |          |    |          |          |      |
| <b>Physical Percent Complete:</b><br>Physical completion ** as of this reporting period is: 100.00%<br><br><b>** Note:</b> Physical completion assessment reflects work completed and invoice amount shown in Caltrans Monthly Progress/Expense Report No. 30.   |                               | <table style="width: 100%;"> <tr> <td style="width: 80%;"><b>Cost Summary:</b></td> <td style="width: 20%; text-align: right;"><b>\$ In millions</b></td> </tr> <tr> <td>1. Award Value:</td> <td style="text-align: right;">6.42</td> </tr> <tr> <td>2. Executed Modifications:</td> <td style="text-align: right;">0.00</td> </tr> <tr> <td>3. Approved Change Orders:</td> <td style="text-align: right;">0.00</td> </tr> <tr> <td>4. Current Contract Value (1+2+3):</td> <td style="text-align: right;">6.42</td> </tr> <tr> <td>5. Incurred Cost:</td> <td style="text-align: right;">6.42</td> </tr> </table>  |                     |          |                 |  |  | <b>Cost Summary:</b> | <b>\$ In millions</b>         | 1. Award Value:   | 6.42                | 2. Executed Modifications: | 0.00            | 3. Approved Change Orders: | 0.00     | 4. Current Contract Value (1+2+3): | 6.42     | 5. Incurred Cost: | 6.42 |  |          |    |          |          |      |  |          |    |          |          |      |
| <b>Cost Summary:</b>   | <b>\$ In millions</b>         |   |                     |          |                 |  |  |                      |                               |                   |                     |                            |                 |                            |          |                                    |          |                   |      |  |          |    |          |          |      |  |          |    |          |          |      |
| 1. Award Value:  | 6.42                          |   |                     |          |                 |  |  |                      |                               |                   |                     |                            |                 |                            |          |                                    |          |                   |      |  |          |    |          |          |      |  |          |    |          |          |      |
| 2. Executed Modifications:   | 0.00                          |   |                     |          |                 |  |  |                      |                               |                   |                     |                            |                 |                            |          |                                    |          |                   |      |  |          |    |          |          |      |  |          |    |          |          |      |
| 3. Approved Change Orders:   | 0.00                          |   |                     |          |                 |  |  |                      |                               |                   |                     |                            |                 |                            |          |                                    |          |                   |      |  |          |    |          |          |      |  |          |    |          |          |      |
| 4. Current Contract Value (1+2+3):   | 6.42                          |   |                     |          |                 |  |  |                      |                               |                   |                     |                            |                 |                            |          |                                    |          |                   |      |  |          |    |          |          |      |  |          |    |          |          |      |
| 5. Incurred Cost:  | 6.42                          |   |                     |          |                 |  |  |                      |                               |                   |                     |                            |                 |                            |          |                                    |          |                   |      |  |          |    |          |          |      |  |          |    |          |          |      |

**CONTRACT C0803 STATUS**

|   |   |                |                  |          |              |  |                       |                         |                 |                  |                            |              |                            |          |                                    |          |                   |        |  |          |    |          |          |     |  |          |     |          |          |     |  |          |    |          |          |   |  |          |   |          |          |   |
|---|---|----------------|------------------|----------|--------------|--|-----------------------|-------------------------|-----------------|------------------|----------------------------|--------------|----------------------------|----------|------------------------------------|----------|-------------------|--------|--|----------|----|----------|----------|-----|--|----------|-----|----------|----------|-----|--|----------|----|----------|----------|---|--|----------|---|----------|----------|---|
| <b>Description: Tunnel, Stations, Trackwork &amp; Systems</b><br><b>Contractor: Eastside LRT Constructors</b>   | <b>Contract No. C0803</b><br><b>Status as of: February 27, 2009</b>   |                |                  |          |              |  |                       |                         |                 |                  |                            |              |                            |          |                                    |          |                   |        |  |          |    |          |          |     |  |          |     |          |          |     |  |          |    |          |          |   |  |          |   |          |          |   |
| <b>Progress/Work Completed:</b> <ul style="list-style-type: none"><li>* Assembled and set escalators # 2A and 2B at Mariachi Plaza Station (MPS)</li><li>* Installed MPS track dampers on the west end of the station</li><li>* Local testing of all transformers at MPS</li><li>* Poured MPS canopy support structure</li><li>* Poured platform top center CIP slab at Soto Station (SS)</li><li>* Installed elevators # 1 and 2 steel frame and guides at SS</li><li>* Installed Radiac cable and supports throughout MPS and SS</li><li>* Erected metal guard railing at MPS and SS mezzanine levels</li><li>* Installed radio equipment in the tunnels &amp; crosspassages</li><li>* Connected 34.5 KV cable to the overhead catenary - Seg. 1 &amp; 2</li><li>* Commissioned TPS-04 and Ancillary Switch Gear Substation</li><li>* Energized all above ground stations</li><li>* Poured architectural platform paving at Pico/Aliso (PA) and Indiana Stations</li><li>* Canopy tensile fabric at Little Tokyo/Arts District (LTAD) Station</li><li>* Irrigation installation at LTAD, PA and Indiana Stations</li><li>* Erected iron picket fence around LTAD Station</li><li>* Installed platform tile finish at Atlantic Station</li></ul><br><b>Areas of Concern:</b> <p>The contractor is projecting a 28 day delay for completion of Milestone # 1, which they plan to mitigate by working longer hours and adding extra crews. At this time, there is no schedule impact to ROD.</p> | <b>Major Activities (In Progress):</b> <ul style="list-style-type: none"><li>* Colored floor concrete casting at the MPS mezzanine level</li><li>* Cable and wire pull and terminations at MPS and SS</li><li>* Escalators and elevators at MPS and SS</li><li>* Install tile on the mezzanine walls and floors at MPS and SS</li><li>* Ceiling panels at MPS and SS platform and mezzanine levels</li><li>* Pour MPS platform top center CIP slab</li><li>* Cable and wire terminations at all cross passages</li><li>* Regulate the overhead catenary at Segments 1 &amp; 2</li><li>* Commission remaining TPS substations</li><li>* Platform edge tactile floor panels at all stations</li><li>* Canopy tensile fabric at Maravilla and E. L. A. Civic Center Sta.</li><li>* Platform tile finish at ELACC, Maravilla and Indiana Stations</li><li>* Continue electrical and mechanical local field testing throughout the alignment</li></ul><br><b>Major Activities Next Period:</b> <ul style="list-style-type: none"><li>* Architectural finishes at the MPS and SS Stations</li><li>* Escalators, elevators and track dampers at MPS and SS</li><li>* Energize both underground stations</li><li>* Cable, wire pulling and terminations at all stations</li><li>* Begin installation of art pieces at all stations</li><li>* Local field acceptance testing throughout the alignment</li><li>* Energize OCS in L. A. County and run a LTV car on own power</li><li>* Canopy glazing and laminated glass at Indiana, Atlantic and ELACC stations</li><li>* PAVMS, seismic, gas and intrusion detection, fire supression, CCTV, F&amp;EM, telephone and SCADA RTU devices</li><li>* Final paving, striping, lighting and traffic signals-Segs. 1, 2 and 4</li></ul> |                |                  |          |              |  |                       |                         |                 |                  |                            |              |                            |          |                                    |          |                   |        |  |          |    |          |          |     |  |          |     |          |          |     |  |          |    |          |          |   |  |          |   |          |          |   |
| <b>Schedule Summary:</b><br><br>Date of Award: 06/01/04<br>Notice to Proceed: 07/01/04<br><br>Original Contract Duration: 1795 CD<br>Current Contract Duration: 1887 CD<br>Elapsed Time from NTP: 1703 CD<br><br>Option D Contract duration 90 CD Complete  | <table><tr><td></td><td>Original Contract Oates</td><td>Time Extension</td><td>Current Contract</td><td>Forecast</td><td>Variance COs</td></tr><tr><td>Notice to Proceed</td><td>07/01/04</td><td>0</td><td>07/01/04</td><td>07/01/04</td><td>0</td></tr><tr><td>Milestone 1 - Contract Completion. Complete all systems integration testing and ready for MTA's pre-revenue operation testing.</td><td>12/31/08</td><td>91</td><td>04/01/09</td><td>04/29/09</td><td>-28</td></tr><tr><td>Milestone 3 - Complete Universal Fare System Equipment area.</td><td>04/30/08</td><td>255</td><td>01/10/09</td><td>01/30/09</td><td>-20</td></tr><tr><td>Milestone 5 - Vacate all staging areas and turn over to MTA.</td><td>05/30/09</td><td>92</td><td>08/30/09</td><td>08/30/09</td><td>0</td></tr><tr><td>Milestone 6 - Complete design and construction of Option D work.</td><td>09/28/04</td><td>0</td><td>09/28/04</td><td>09/28/04</td><td>0</td></tr></table>   |                |                  |          |              |  |                       | Original Contract Oates | Time Extension  | Current Contract | Forecast                   | Variance COs | Notice to Proceed          | 07/01/04 | 0                                  | 07/01/04 | 07/01/04          | 0      | Milestone 1 - Contract Completion. Complete all systems integration testing and ready for MTA's pre-revenue operation testing. | 12/31/08 | 91 | 04/01/09 | 04/29/09 | -28 | Milestone 3 - Complete Universal Fare System Equipment area. | 04/30/08 | 255 | 01/10/09 | 01/30/09 | -20 | Milestone 5 - Vacate all staging areas and turn over to MTA. | 05/30/09 | 92 | 08/30/09 | 08/30/09 | 0 | Milestone 6 - Complete design and construction of Option D work. | 09/28/04 | 0 | 09/28/04 | 09/28/04 | 0 |
|   | Original Contract Oates   | Time Extension | Current Contract | Forecast | Variance COs |  |                       |                         |                 |                  |                            |              |                            |          |                                    |          |                   |        |  |          |    |          |          |     |  |          |     |          |          |     |  |          |    |          |          |   |  |          |   |          |          |   |
| Notice to Proceed   | 07/01/04  | 0              | 07/01/04         | 07/01/04 | 0            |  |                       |                         |                 |                  |                            |              |                            |          |                                    |          |                   |        |  |          |    |          |          |     |  |          |     |          |          |     |  |          |    |          |          |   |  |          |   |          |          |   |
| Milestone 1 - Contract Completion. Complete all systems integration testing and ready for MTA's pre-revenue operation testing.  | 12/31/08  | 91             | 04/01/09         | 04/29/09 | -28          |  |                       |                         |                 |                  |                            |              |                            |          |                                    |          |                   |        |  |          |    |          |          |     |  |          |     |          |          |     |  |          |    |          |          |   |  |          |   |          |          |   |
| Milestone 3 - Complete Universal Fare System Equipment area.  | 04/30/08  | 255            | 01/10/09         | 01/30/09 | -20          |  |                       |                         |                 |                  |                            |              |                            |          |                                    |          |                   |        |  |          |    |          |          |     |  |          |     |          |          |     |  |          |    |          |          |   |  |          |   |          |          |   |
| Milestone 5 - Vacate all staging areas and turn over to MTA.  | 05/30/09  | 92             | 08/30/09         | 08/30/09 | 0            |  |                       |                         |                 |                  |                            |              |                            |          |                                    |          |                   |        |  |          |    |          |          |     |  |          |     |          |          |     |  |          |    |          |          |   |  |          |   |          |          |   |
| Milestone 6 - Complete design and construction of Option D work.  | 09/28/04  | 0              | 09/28/04         | 09/28/04 | 0            |  |                       |                         |                 |                  |                            |              |                            |          |                                    |          |                   |        |  |          |    |          |          |     |  |          |     |          |          |     |  |          |    |          |          |   |  |          |   |          |          |   |
| <b>Physical Percent Complete:</b><br><br>Physical completion * as of this reporting period is: 94.44%<br><br>* Note: Physical completion assessment reflects work completed and work in progress.   | <b>Cost Summary:</b><br><br><table><tr><td colspan="2"><b>\$ In millions</b></td></tr><tr><td>1. Award Value:</td><td>600.45</td></tr><tr><td>2. Executed Modifications:</td><td>14.86</td></tr><tr><td>3. Approved Change Orders:</td><td>0.02</td></tr><tr><td>4. Current Contract Value (1+2+3):</td><td>615.33</td></tr><tr><td>5. Incurred Cost:</td><td>578.95</td></tr></table>  |                |                  |          |              |  | <b>\$ In millions</b> |                         | 1. Award Value: | 600.45           | 2. Executed Modifications: | 14.86        | 3. Approved Change Orders: | 0.02     | 4. Current Contract Value (1+2+3): | 615.33   | 5. Incurred Cost: | 578.95 |  |          |    |          |          |     |  |          |     |          |          |     |  |          |    |          |          |   |  |          |   |          |          |   |
| <b>\$ In millions</b>   |   |                |                  |          |              |  |                       |                         |                 |                  |                            |              |                            |          |                                    |          |                   |        |  |          |    |          |          |     |  |          |     |          |          |     |  |          |    |          |          |   |  |          |   |          |          |   |
| 1. Award Value:   | 600.45  |                |                  |          |              |  |                       |                         |                 |                  |                            |              |                            |          |                                    |          |                   |        |  |          |    |          |          |     |  |          |     |          |          |     |  |          |    |          |          |   |  |          |   |          |          |   |
| 2. Executed Modifications:  | 14.86   |                |                  |          |              |  |                       |                         |                 |                  |                            |              |                            |          |                                    |          |                   |        |  |          |    |          |          |     |  |          |     |          |          |     |  |          |    |          |          |   |  |          |   |          |          |   |
| 3. Approved Change Orders:  | 0.02  |                |                  |          |              |  |                       |                         |                 |                  |                            |              |                            |          |                                    |          |                   |        |  |          |    |          |          |     |  |          |     |          |          |     |  |          |    |          |          |   |  |          |   |          |          |   |
| 4. Current Contract Value (1+2+3):  | 615.33  |                |                  |          |              |  |                       |                         |                 |                  |                            |              |                            |          |                                    |          |                   |        |  |          |    |          |          |     |  |          |     |          |          |     |  |          |    |          |          |   |  |          |   |          |          |   |
| 5. Incurred Cost:   | 578.95  |                |                  |          |              |  |                       |                         |                 |                  |                            |              |                            |          |                                    |          |                   |        |  |          |    |          |          |     |  |          |     |          |          |     |  |          |    |          |          |   |  |          |   |          |          |   |

## CONTRACT E700051F STATUS

| <b>Description: 1st Street Bridge Strengthening</b><br><b>Contractor: The Griffith Company</b>   | <b>Contract No. E700051F</b><br><b>Status as of: February 27, 2009</b>  |                |                  |          |              |  |                   |                         |                            |                  |                            |              |                                    |          |                   |          |          |   |                                      |          |    |          |          |   |
|--|---|----------------|------------------|----------|--------------|--|-------------------|-------------------------|----------------------------|------------------|----------------------------|--------------|------------------------------------|----------|-------------------|----------|----------|---|--------------------------------------|----------|----|----------|----------|---|
| <b>Progress/Work Completed:</b><br><br>* Bridge turned over to Metro on October 26, 2007<br><br><br><br><br><br><br><br><br><br><b>Areas of Concern:</b><br><br>* None                             | <b>Major Activities (In Progress):</b><br><br>* None<br><br><br><br><br><br><br><br><br><br><b>Major Activities Next Period:</b><br><br>* None  |                |                  |          |              |  |                   |                         |                            |                  |                            |              |                                    |          |                   |          |          |   |                                      |          |    |          |          |   |
| <b>Schedule Summary:</b><br><br>Date of Award: 01/19/07<br>Notice to Proceed: 02/06/07<br>Original Contract Duration: 251 CD<br>Current Contract Duration: 281 CD<br>Elapsed Time from NTP: 281 CD | <table border="1" style="width: 100%; border-collapse: collapse;"> <thead> <tr> <th style="width: 30%;"></th> <th style="width: 10%;">Original Contract Dates</th> <th style="width: 10%;">Time Extension</th> <th style="width: 10%;">Current Contract</th> <th style="width: 10%;">Forecast</th> <th style="width: 10%;">Variance CDs</th> </tr> </thead> <tbody> <tr> <td>Notice to Proceed</td> <td>02/06/07</td> <td>0</td> <td>02/06/07</td> <td>02/06/07</td> <td>0</td> </tr> <tr> <td>Milestone 1 - Substantial Completion</td> <td>10/15/07</td> <td>30</td> <td>11/14/07</td> <td>11/14/07</td> <td>0</td> </tr> </tbody> </table> |                |                  |          |              |  |                   | Original Contract Dates | Time Extension             | Current Contract | Forecast                   | Variance CDs | Notice to Proceed                  | 02/06/07 | 0                 | 02/06/07 | 02/06/07 | 0 | Milestone 1 - Substantial Completion | 10/15/07 | 30 | 11/14/07 | 11/14/07 | 0 |
|  | Original Contract Dates   | Time Extension | Current Contract | Forecast | Variance CDs |  |                   |                         |                            |                  |                            |              |                                    |          |                   |          |          |   |                                      |          |    |          |          |   |
| Notice to Proceed  | 02/06/07  | 0              | 02/06/07         | 02/06/07 | 0            |  |                   |                         |                            |                  |                            |              |                                    |          |                   |          |          |   |                                      |          |    |          |          |   |
| Milestone 1 - Substantial Completion   | 10/15/07  | 30             | 11/14/07         | 11/14/07 | 0            |  |                   |                         |                            |                  |                            |              |                                    |          |                   |          |          |   |                                      |          |    |          |          |   |
| <b>Physical Percent Complete:</b><br><br>Physical completion as of 11/14/07: 100.00% *<br><br>* As reported by the City of Los Angeles, Department of Contract Administration                      | <b>Cost Summary: \$ In millions</b><br><table style="width: 100%;"> <tr> <td style="width: 80%;">1. Award Value: *</td> <td style="width: 20%; text-align: right;">4.26</td> </tr> <tr> <td>2. Executed Modifications:</td> <td style="text-align: right;">0.00</td> </tr> <tr> <td>3. Approved Change Orders:</td> <td style="text-align: right;">0.05</td> </tr> <tr> <td>4. Current Contract Value (1+2+3):</td> <td style="text-align: right;">4.31</td> </tr> <tr> <td>5. Incurred Cost:</td> <td style="text-align: right;">4.31</td> </tr> </table><br>* City of Los Angeles   |                |                  |          |              |  | 1. Award Value: * | 4.26                    | 2. Executed Modifications: | 0.00             | 3. Approved Change Orders: | 0.05         | 4. Current Contract Value (1+2+3): | 4.31     | 5. Incurred Cost: | 4.31     |          |   |                                      |          |    |          |          |   |
| 1. Award Value: *  | 4.26  |                |                  |          |              |  |                   |                         |                            |                  |                            |              |                                    |          |                   |          |          |   |                                      |          |    |          |          |   |
| 2. Executed Modifications:   | 0.00  |                |                  |          |              |  |                   |                         |                            |                  |                            |              |                                    |          |                   |          |          |   |                                      |          |    |          |          |   |
| 3. Approved Change Orders:   | 0.05  |                |                  |          |              |  |                   |                         |                            |                  |                            |              |                                    |          |                   |          |          |   |                                      |          |    |          |          |   |
| 4. Current Contract Value (1+2+3):   | 4.31  |                |                  |          |              |  |                   |                         |                            |                  |                            |              |                                    |          |                   |          |          |   |                                      |          |    |          |          |   |
| 5. Incurred Cost:  | 4.31  |                |                  |          |              |  |                   |                         |                            |                  |                            |              |                                    |          |                   |          |          |   |                                      |          |    |          |          |   |

## CONTRACT C0893 STATUS

|   |  |  |                         |                |                  |          |              |
|---|--|--|-------------------------|----------------|------------------|----------|--------------|
| <b>Description: Pomona Atlantic Parking Structure</b><br><b>Contractor: W. M. Klorman Construction Corp.</b>  |  | <b>Contract No. C0893</b><br><b>Status as of: February 27, 2009</b>  |                         |                |                  |          |              |
| <b>Progress/Work Completed:</b> <ul style="list-style-type: none"> <li>* Submitted 75% architectural, civil, electrical, fire suppression and landscaping design drawings for review</li> <li>* Submitted the CDRL list</li> <li>* Mobilized contractor's field trailer to the site</li> <li>* Temporary power secured for the site</li> <li>* Metro obtained the County Sanitation District permit for sewer line work</li> </ul><br><b>Areas of Concern:</b> <ul style="list-style-type: none"> <li>* None</li> </ul> |  | <b>Major Activities (In Progress):</b> <ul style="list-style-type: none"> <li>* Structural, plumbing, mechanical 85% design</li> <li>* Sewer encasement 85% design</li> <li>* Coordination meetings with the design team</li> <li>* Complete field mobilization</li> <li>* Site survey</li> <li>* Preparing excavation and support system submittals</li> <li>* Baseline schedule resubmittal</li> <li>* Review 75% architectural, civil, electrical, fire suppression and landscaping design drawings</li> </ul><br><b>Major Activities Next Period:</b> <ul style="list-style-type: none"> <li>* Civil, architectural and electrical 100% design</li> <li>* Sewer encasement 100% design</li> <li>* Site survey</li> <li>* Secure permanent utility services for the site</li> <li>* Contract and construction submittals</li> <li>* Metro obtain County of Public Works permit for storm drain line work</li> </ul> |                         |                |                  |          |              |
| <b>Schedule Summary:</b>  |  |  | Original Contract Dates | Time Extension | Current Contract | Forecast | Variance CDs |
| Date of Award: 12/15/08<br>Notice to Proceed: 01/14/09<br>Original Contract Duration: 400 CD<br>Current Contract Duration: 400 CD<br>Elapsed Time from NTP: 46 CD   |  | Notice to Proceed  | 01/14/09                | 0              | 01/14/09         | 01/14/09 | 0            |
|   |  | Milestone 1 - Substantial Completion   | 02/17/10                | 0              | 02/17/10         | 02/17/10 | 0            |
| <b>Physical Percent Complete:</b>   |  | <b>Cost Summary: \$ In millions</b>  |                         |                |                  |          |              |
| Physical completion as of 2/28/09: 4.6% *   |  | 1. Award Value: 8.15<br>2. Executed Modifications: 0.00<br>3. Approved Change Orders: 0.00<br>4. Current Contract Value (1+2+3): 8.15<br>5. Incurred Cost: 0.54  |                         |                |                  |          |              |
| * Note: Physical completion assessment reflects work completed and work in progress.  |  |  |                         |                |                  |          |              |

**Metro Gold Line Eastside Extension  
Monthly Project Status Report**

**February 2009**

**CONTRACT P2550 STATUS**

|  |  |  |          |                         |             |
|--|--|--|----------|-------------------------|-------------|
| <b>Description: 2550 Rail Vehicle Program</b><br><b>Contractor: AnsaldoBreda, Italy (AB)</b>   |  | <b>Contract No. P2550</b><br><b>Status as of: February 27, 2009</b>  |          |                         |             |
| <b>Progress/Work Completed:</b><br>1. As of February 27, 2009 seventeen vehicles have been accepted by MTA and 4 vehicles are undergoing testing for acceptance.<br>2. Vehicle final assembly work continues in Pittsburg, CA.<br>3. Shipment of foreign and domestic parts for final assembly continue to arrive in Pittsburg, CA.<br>4. Several Engineering meetings with AB have been held during the period to evaluate progress and to close open items.<br>6. Vehicle Nos. 719 and 716 are the next vehicles to be accepted.<br><b>Areas of Concern:</b><br>Accepted vehicle reliability and availability for revenue service is AnsaldoBreda's primary focus for June Eastside Extension opening. AB is tasked to augment technical staff to support revenue service availability.<br>With arrival of new vehicles from Pittsburg to Los Angeles, available vehicle storage space at Gold Line Shop/Yard is a concern as it affects vehicle movement in the yard. |  | <b>Major Activities (In Progress):</b><br>1. AnsaldoBreda's manufacturing plants in Pistoia and Naples, Italy continue to prepare carshells and subassemblies for shipment to U.S.A. Pittsburg plant continues vehicle assembly work.<br>2. Testing of Vehicles 719 & 716 is ongoing in Los Angeles for next vehicle acceptance.<br>3. Weekly project meetings were held to close open items.<br><b>Major Activities Next Period:</b><br>1. Several Technical Progress meetings will be held to emphasize the urgency of resolution of remaining critical items for final acceptance of vehicles.<br>2. Cars 719 and 716 will continue final testing for Conditional Acceptance in March 2009. |          |                         |             |
|  |  |  | Quantity | Contract Total Quantity | Balance Due |
| <b>Schedule Summary:</b><br>Date of Award: 04/24/03<br>Notice to Proceed: 06/06/03<br><br>Original Contract Duration: 1442 CD<br>Elapsed Time from NTP: 2039 CD<br><br>Note:<br>A schedule of vehicle delivery has been submitted by AB with 50th (last) car delivered by July 2010. Metro has elected to not exercise options for additional vehicles.  |  | Notice to Proceed 6/6/2003A  |          |                         |             |
|  |  | Vehicles Assembled   | 42       | 50                      | 8           |
|  |  | LRV at Commissioning Site - Metro  | 21       | 50                      | 29          |
|  |  | LRV Accepted for Revenue Service by Metro  | 17       | 50                      | 33          |
|  |  |  |          |                         |             |
| <b>Physical Percent Complete:</b><br><br>Percent of LRVs assembled = 42/50 = 84%<br><br>Percent Work Product Invoiced through February 2009 is 55.7%   |  | <b>Cost Summary: \$ In millions</b><br>1. Award Value:<br>Pasadena (Proj. No.: 800151) 126.99<br>Eastside Ext. (Proj. No.: 800088) 31.75<br>Total Award Value 158.74<br>2 Executed Modifications 0.00<br>3 Approved Change Orders: 0.00<br>4 Current Contract Value (1 + 2 + 3): 158.74<br>5 Payments or invoices in process: 88.53  |          |                         |             |

## **CONSTRUCTION PHOTOGRAPHS**



View of traction power substation #4 and the western end of the U-channel.



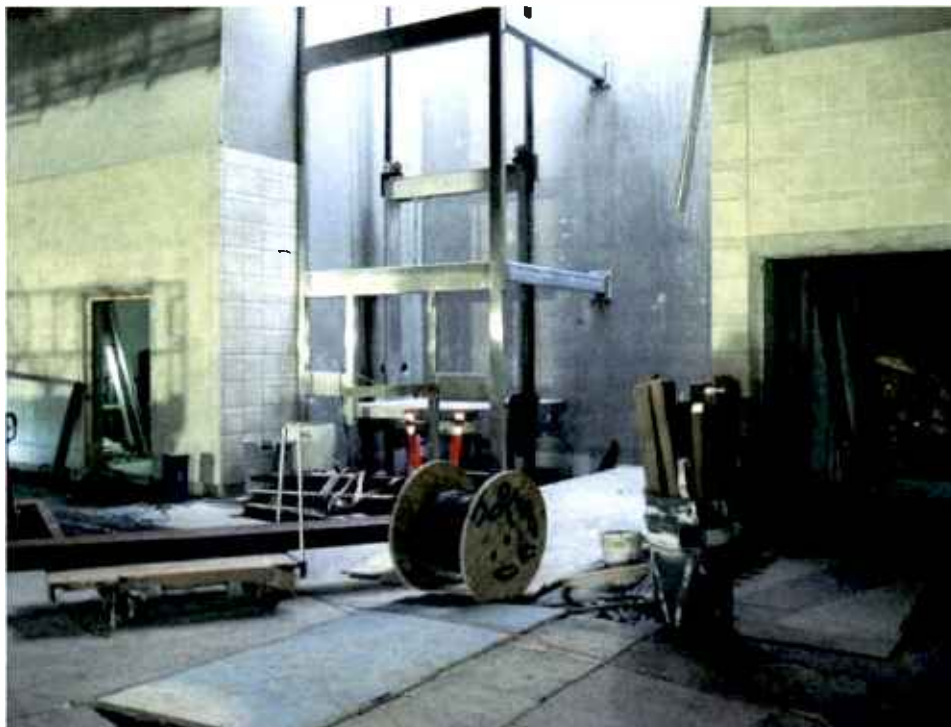
View of Maravilla Station canopy and street lighting.



## **CONSTRUCTION PHOTOGRAPHS**



Installation of Soto Station entrance wall tiles.



View of Boyle Heights/ Mariachi Plaza Station elevator structure.

## **CONSTRUCTION PHOTOGRAPHS**



Placement of mezzanine floor tiles at the Boyle Heights/Mariachi Plaza Station.



Installation of variable message signs and public address speakers within the Little Tokyo/Arts District Station canopy.

## CONSTRUCTION PHOTOGRAPHS



East LA Civic Center Station artwork and architectural finishes.

## **APPENDIX**

### **COST AND BUDGET TERMINOLOGY**

**ESTIMATED PROJECT COSTS:** Estimated project costs are based upon the current project cost estimates that are produced during the engineering design phase.

**COMMITMENTS:** The total of actual contract awards, executed change orders or amendments, approved work orders of Master Cooperative Agreements, offers accepted for purchase of real estate, and other LACMTA actions that will result in specific expenditures at a future time.

**INCURRED COST:** The total value of work performed to date of services received, and acquired materials or properties.

**EXPENDITURES:** The total dollar amount of checks written by the LACMTA's Accounting department for contractor or consultant invoices, third party invoices, staff salaries, and closing payments for escrow accounts that is reported in the LACMTA's Financial Information System (FIS).

**CONSTRUCTION:** Includes guideways, yards and shops, systems equipment, stations, and vehicles.

**PROFESSIONAL SERVICES:** Includes general engineering, construction management services, consultant design support services during construction, legal counsel, and agency (LACMTA staff) costs.

**RIGHT-OF-WAY:** Includes real estate appraisals, purchase cost of parcels, easements, right-of-entry permits, escrow fees, and tenant relocation.

**UTILITY/AGENCY FORCE ACCOUNT:** Includes work by outside agencies and utilities in design coordination and review.

**CONTINGENCY:** A fund established at the beginning of a project to provide for anticipated but unknown additional costs that may arise during the course of the project.

**SPECIAL CONDITIONS:** Includes utilities relocation, environmental compliance and mitigation, master cooperative agreements, insurance program, artwork, systems integration testing and pre-revenue operations.

## **APPENDIX**

### **LIST OF ACRONYMS**

|          |  |
|----------|--|
| AFE      | Authorization For Expenditure                            |
| ATC      | Automatic Train Control                                  |
| CADD     | Computer Aided Drafting and Design                       |
| CALTRANS | California Department of Transportation                  |
| CD       | Calendar Day   |
| CM       | Construction Manager                                     |
| CMAQ     | Congestion Mitigation Air Quality                        |
| CN       | Change Notice  |
| CO       | Change Order   |
| CNFPA    | Concurrent Non-FFGA Project Activities                   |
| CPM      | Critical Path Method                                     |
| CPUC     | California Public Utilities Commission                   |
| CR       | Camera Ready   |
| CTC      | California Transportation Commission                     |
| CUD      | Contract Unit Description                                |
| DB       | Design/Build   |
| DBB      | Design/Bid/Build   |
| DD       | Design Development                                       |
| DOT      | Department of Transportation                             |
| DWP      | Department of Water and Power                            |
| EIR      | Environmental Impact Report                              |
| EIS      | Environmental Impact Statement                           |
| EPBM     | Earth Pressure Balance Machine                           |
| ESP      | Eastside LRT Partners                                    |
| FAR      | Federal Acquisition Regulation                           |
| FD       | Final Design   |
| FEIS     | Final Environmental Impact Statement                     |
| FEIR     | Final Environmental Impact Report                        |
| FFGA     | Full Funding Grant Agreement                             |
| FIS      | Financial Information System                             |
| FSEIR    | Final Supplemental Environmental Impact Report           |
| FSEIS    | Final Supplemental Environmental Impact Statement        |
| FTA      | Federal Transit Administration                           |
| FTE      | Full Time Equivalent                                     |
| GDSR     | Geotechnical Design Summary Report                       |
| IFB      | Invitation for Bid                                       |
| IPO      | Integrated Project Office                                |
| JV       | Joint Venture  |
| LA       | Los Angeles  |
| LABOE    | Los Angeles Bureau of Engineering                        |
| LACFCD   | Los Angeles County Flood Control District                |
| LACMTA   | Los Angeles County Metropolitan Transportation Authority |
| LADOT    | Los Angeles Department of Transportation                 |

## **APPENDIX**

### **LIST OF ACRONYMS (Continued)**

|       |  |
|-------|--|
| LADPW | Los Angeles Department of Public Works           |
| LADWP | Los Angeles Department of Water and Power        |
| LAUSD | Los Angeles Unified School District              |
| LNTF  | Limited Notice To Proceed                        |
| LONP  | Letter Of No Prejudice                           |
| LRT   | Light Rail Transit                               |
| LRTP  | Long Range Transportation Plan                   |
| LRV   | Light Rail Vehicle                               |
| MIS   | Major Investment Study                           |
| MPSR  | Monthly Project Status Report                    |
| N/A   | Not Applicable                                   |
| NEPA  | National Environmental Protection Act            |
| NPDES | National Pollution Discharge Elimination System  |
| NTE   | Not to Exceed                                    |
| NTP   | Notice To Proceed                                |
| OCIP  | Owner-Controlled Insurance Program               |
| P3    | Primavera Project Planner® (scheduling software) |
| PC    | Project Control                                  |
| PE    | Preliminary Engineering                          |
| PEER  | Permit Engineering Evaluation Report             |
| PGL   | Pasadena Gold Line                               |
| PIP   | Project Implementation Plan                      |
| PM    | Project Manager                                  |
| PMA   | Project Management Assistance                    |
| PMIP  | Project Management Implementation Plan           |
| PMOC  | Project Management Oversight Consultant          |
| PMP   | Project Management Plan (manual)                 |
| P&P   | Policies & Procedures                            |
| PR    | Project Report                                   |
| PSR   | Project Study Report                             |
| QA    | Quality Assurance                                |
| QAR   | Quality Assurance Report                         |
| QC    | Quality Control                                  |
| QPSR  | Quarterly Project Status Report                  |
| RAC   | Review Advisory Committee                        |
| RAG   | Rail Activation Group                            |
| RFC   | Request For Change                               |
| RFP   | Request For Proposal                             |
| ROD   | Record Of Decision                               |
| ROD   | Revenue Operations Date                          |
| ROM   | Rough Order of Magnitude                         |



**APPENDIX  
LIST OF ACRONYMS (Continued)**

|        |   |
|--------|---|
| ROW    | Right-Of-Way  |
| SCAQMD | Southern California Air Quality Management District |
| SCE    | Southern California Edison                          |
| SCRRA  | Southern California Regional Rail Authority         |
| SHA    | State Highway Account                               |
| SHPO   | State Historic Preservation Office                  |
| SIT    | System Integration Testing                          |
| SOV    | Schedule Of Value                                   |
| SOW    | Statement Of Work                                   |
| SP     | Special Provision                                   |
| STIP   | State Transportation Improvement Program            |
| STP    | Surface Transportation Program                      |
| TBD    | To Be Determined                                    |
| TBM    | Tunnel Boring Machine                               |
| TCRP   | Traffic Congestion Relief Program                   |
| TPSS   | Traction Power Substation                           |
| TRACS  | Transit Automatic Control System                    |
| UFS    | Universal Fare System                               |
| USDOT  | U.S. Department Of Transportation                   |
| VE     | Value Engineering                                   |
| WBS    | Work Breakdown Structure                            |
| WP     | Work Package  |