

NOTES:

[X] INDICATES ITEM NUMBER
ON RIGHTS-OF-WAY INFORMATION
SHEET, DRWG C-250.

LEGEND

↔ BRT IN EXCLUSIVE BUSWAY

THE PREPARATION OF THIS DRAWING HAS BEEN FINANCED IN PART THROUGH A GRANT FROM THE U.S. DEPARTMENT OF TRANSPORTATION, FEDERAL TRANSIT ADMINISTRATION (FTA), UNDER THE FEDERAL TRANSIT ACT OF 1964, AS AMENDED, AND IN PART BY THE TAXES OF THE CITIZENS OF LOS ANGELES COUNTY AND OF THE STATE OF CALIFORNIA.

REV	DATE	BY	APP	REG NO	EXPIRES	SEAL HOLDER	DESCRIPTION

DESIGNED BY	
DRAWN BY	
CHECKED BY	
IN CHARGE	
DATE	



LOS ANGELES COUNTY METROPOLITAN TRANSPORTATION AUTHORITY
Crenshaw Transit Corridor Project

Parsons Brinckerhoff
In Association with
Jenkins Gales Martinez, Inc.

PROJECT MANAGER

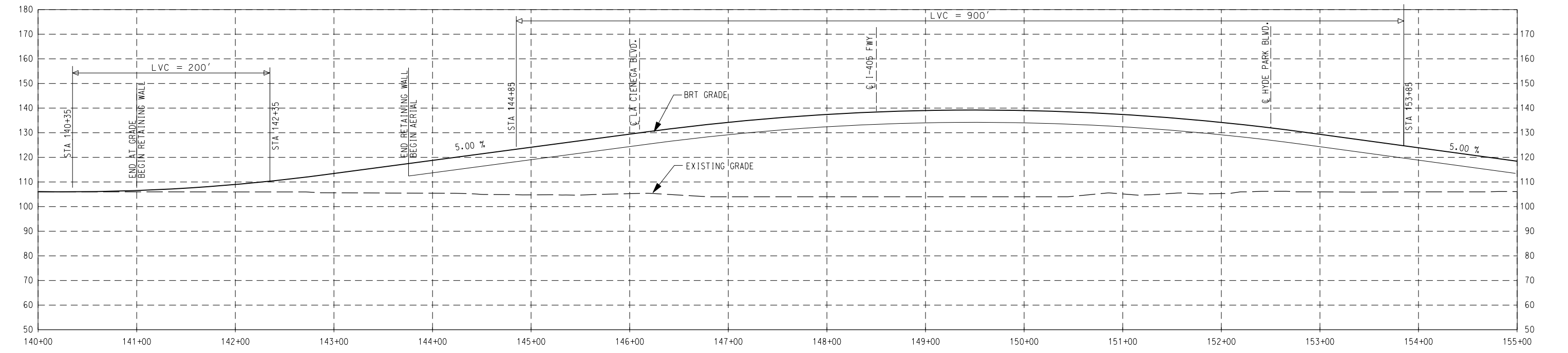
BUS RAPID TRANSIT

PLAN
STA 127+00 TO STA 140+00

CONTRACT NO PS-4330-1968	
DRAWING NO C-110	REV 0
SCALE 1"=100'	
SHEET NO	

NOTES:
 [X] INDICATES ITEM NUMBER
 ON RIGHTS-OF-WAY INFORMATION
 SHEET, DRWG C-250.

LEGEND
 BRT IN EXCLUSIVE BUSWAY



THE PREPARATION OF THIS DRAWING HAS BEEN FINANCED IN PART THROUGH A GRANT FROM THE U.S. DEPARTMENT OF TRANSPORTATION, FEDERAL TRANSIT ADMINISTRATION (FTA), UNDER THE FEDERAL TRANSIT ACT OF 1964, AS AMENDED, AND IN PART BY THE TAXES OF THE CITIZENS OF LOS ANGELES COUNTY AND OF THE STATE OF CALIFORNIA.

REV	DATE	BY	APP	REG NO	EXPIRES	SEAL HOLDER	DESCRIPTION

DESIGNED BY	
DRAWN BY	
CHECKED BY	
IN CHARGE	
DATE	

M Metro
LOS ANGELES COUNTY METROPOLITAN TRANSPORTATION AUTHORITY
 Crenshaw Transit Corridor Project

PB Parsons Brinckerhoff
 In Association with
 Jenkins Gales Martinez, Inc.

PROJECT MANAGER

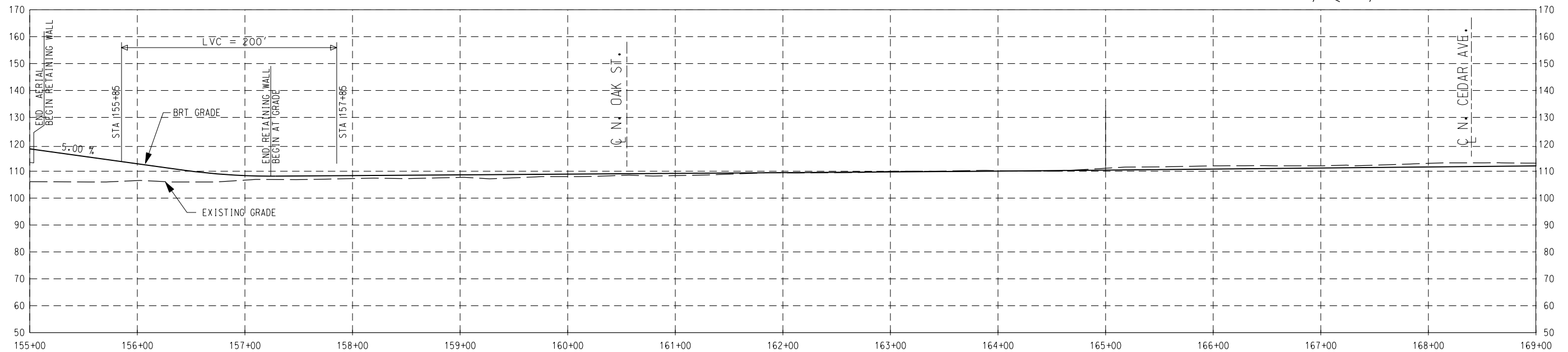
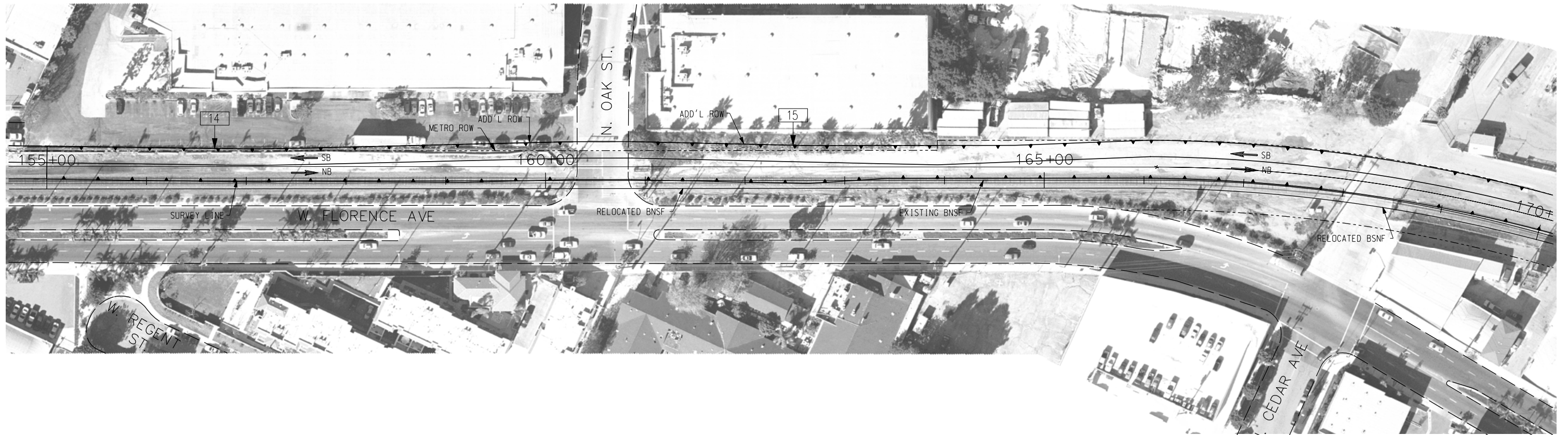
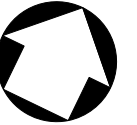
BUS RAPID TRANSIT

PLAN AND PROFILE
 STA 140+00 TO STA 155+00

CONTRACT NO	PS-4330-1968
DRAWING NO	C-111
REV	0
SCALE	HORIZ: 1" = 100' VERT: 1" = 40'
SHEET NO	

NOTES:
 [X] INDICATES ITEM NUMBER
 ON RIGHTS-OF-WAY INFORMATION
 SHEET, DRWG C-250.

LEGEND
 BRT IN EXCLUSIVE BUSWAY



THE PREPARATION OF THIS DRAWING HAS BEEN FINANCED IN PART THROUGH A GRANT FROM THE U.S. DEPARTMENT OF TRANSPORTATION, FEDERAL TRANSIT ADMINISTRATION (FTA), UNDER THE FEDERAL TRANSIT ACT OF 1964, AS AMENDED, AND IN PART BY THE TAXES OF THE CITIZENS OF LOS ANGELES COUNTY AND OF THE STATE OF CALIFORNIA.

REV	DATE	BY	APP	REG NO	EXPIRES	SEAL HOLDER	DESCRIPTION

DESIGNED BY	
DRAWN BY	
CHECKED BY	
IN CHARGE	
DATE	

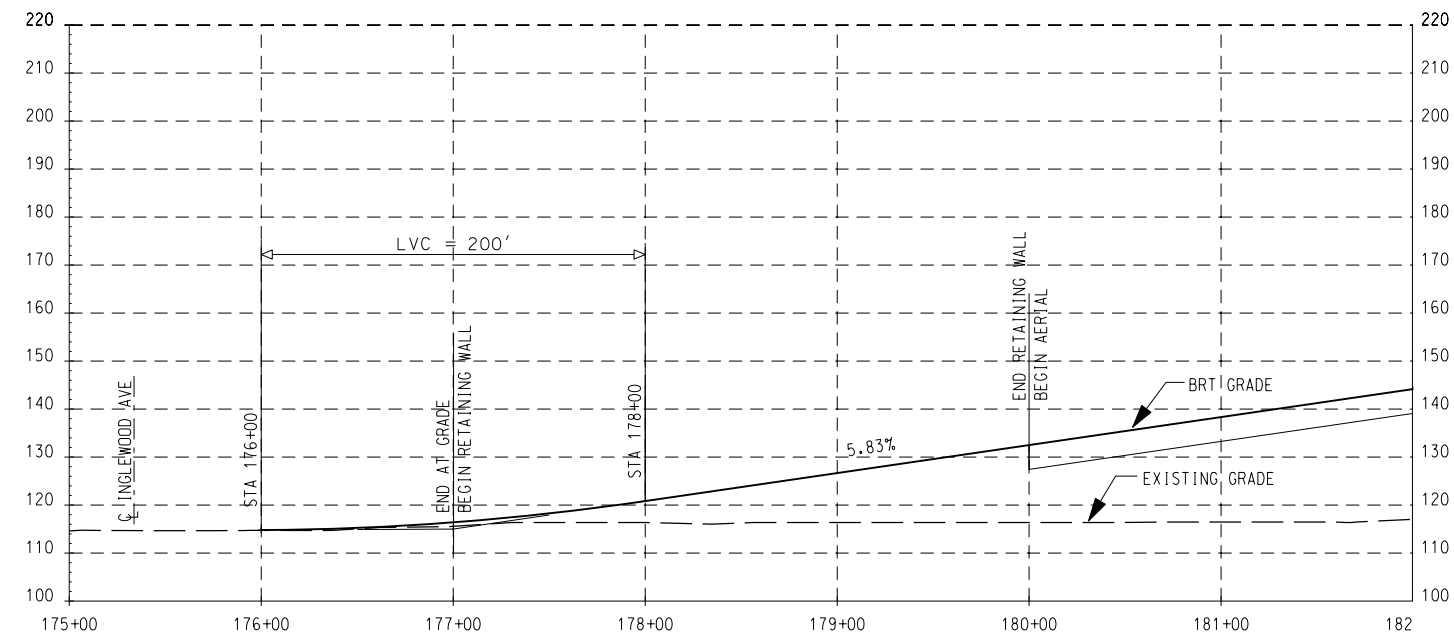
M Metro LOS ANGELES COUNTY METROPOLITAN TRANSPORTATION AUTHORITY
 Crenshaw Transit Corridor Project

PB Parsons Brinckerhoff
 In Association with Jenkins Gales Martinez, Inc.

PROJECT MANAGER

BUS RAPID TRANSIT
 PLAN AND PROFILE
 STA 155+00 TO STA 169+00

CONTRACT NO	PS-4330-1968
DRAWING NO	C-112
SCALE	HORIZ: 1" = 100' VERT: 1" = 40'
SHEET NO	0



NOTES:

[X] INDICATES ITEM NUMBER ON RIGHTS-OF-WAY INFORMATION SHEET, DRWG C-250.

LEGEND

← BRT IN EXCLUSIVE BUSWAY

THE PREPARATION OF THIS DRAWING HAS BEEN FINANCED IN PART THROUGH A GRANT FROM THE U.S. DEPARTMENT OF TRANSPORTATION, FEDERAL TRANSIT ADMINISTRATION (FTA), UNDER THE FEDERAL TRANSIT ACT OF 1964, AS AMENDED, AND IN PART BY THE TAXES OF THE CITIZENS OF LOS ANGELES COUNTY AND OF THE STATE OF CALIFORNIA.

REV	DATE	BY	APP	REG NO	EXPIRES	SEAL HOLDER	DESCRIPTION

DESIGNED BY	
DRAWN BY	
CHECKED BY	
IN CHARGE	
DATE	

M Metro LOS ANGELES COUNTY METROPOLITAN TRANSPORTATION AUTHORITY
Crenshaw Transit Corridor Project

PB Parsons Brinckerhoff
 In Association with Jenkins Gales Martinez, Inc.

PROJECT MANAGER

BUS RAPID TRANSIT

PLAN AND PROFILE
 STA 169+00 TO STA 182+00

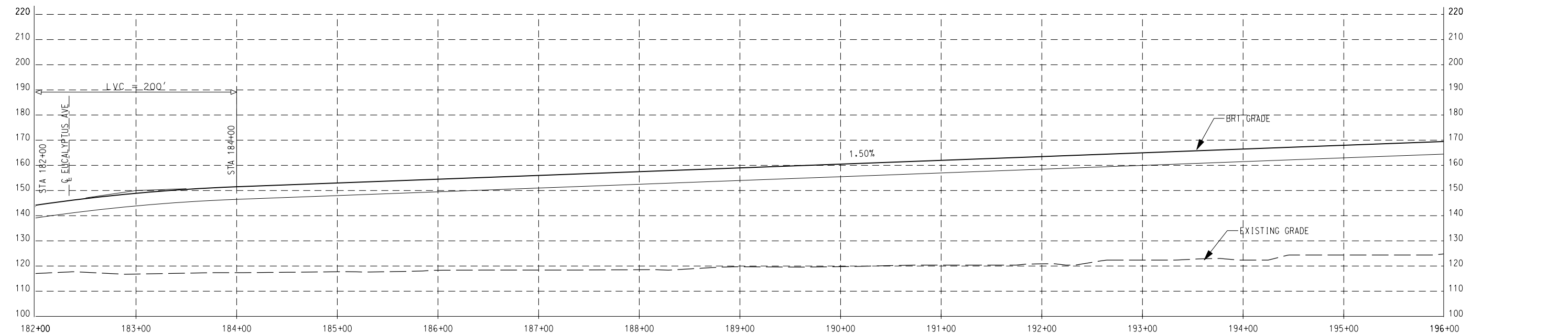
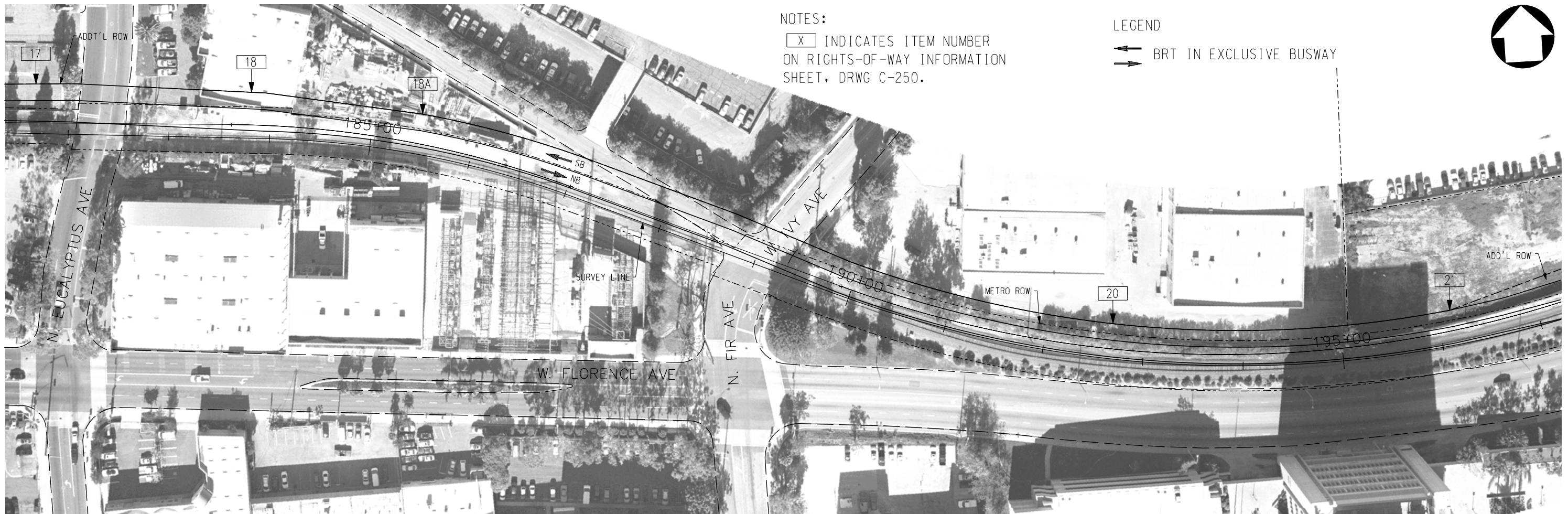
CONTRACT NO PS-4330-1968
 DRAWING NO C-113 REV 0
 SCALE 1"=100'
 SHEET NO

NOTES:

☒ INDICATES ITEM NUMBER ON RIGHTS-OF-WAY INFORMATION SHEET, DRWG C-250.

LEGEND

← BRT IN EXCLUSIVE BUSWAY



THE PREPARATION OF THIS DRAWING HAS BEEN FINANCED IN PART THROUGH A GRANT FROM THE U.S. DEPARTMENT OF TRANSPORTATION, FEDERAL TRANSIT ADMINISTRATION (FTA), UNDER THE FEDERAL TRANSIT ACT OF 1964, AS AMENDED, AND IN PART BY THE TAXES OF THE CITIZENS OF LOS ANGELES COUNTY AND OF THE STATE OF CALIFORNIA.

REV	DATE	BY	APP	REG NO	EXPIRES	SEAL HOLDER	DESCRIPTION

DESIGNED BY	
DRAWN BY	
CHECKED BY	
IN CHARGE	
DATE	

M Metro LOS ANGELES COUNTY METROPOLITAN TRANSPORTATION AUTHORITY
Crenshaw Transit Corridor Project

PB Parsons Brinckerhoff
In Association with Jenkins Gales Martinez, Inc.

PROJECT MANAGER

BUS RAPID TRANSIT

PLAN AND PROFILE
STA 182+00 TO STA 196+00

CONTRACT NO PS-4330-1968	
DRAWING NO C-114	REV 0
SCALE HORIZ: 1" = 100' VERT: 1" = 40'	
SHEET NO	