

NOTE: Design Option for Aerial LRT Crossing at Manchester See Drawings C-608 thru C-610

THE PREPARATION OF THIS DRAWING HAS BEEN FINANCED IN PART THROUGH A GRANT FROM THE U.S. DEPARTMENT OF TRANSPORTATION, FEDERAL TRANSIT ADMINISTRATION (FTA), UNDER THE FEDERAL TRANSIT ACT OF 1964, AS AMENDED, AND IN PART BY THE TAXES OF THE CITIZENS OF LOS ANGELES COUNTY AND OF THE STATE OF CALIFORNIA.

REV	DATE	BY	APP	REG NO	EXPIRES	SEAL HOLDER	DESCRIPTION

DESIGNED BY	
DRAWN BY	
CHECKED BY	
IN CHARGE	
DATE	



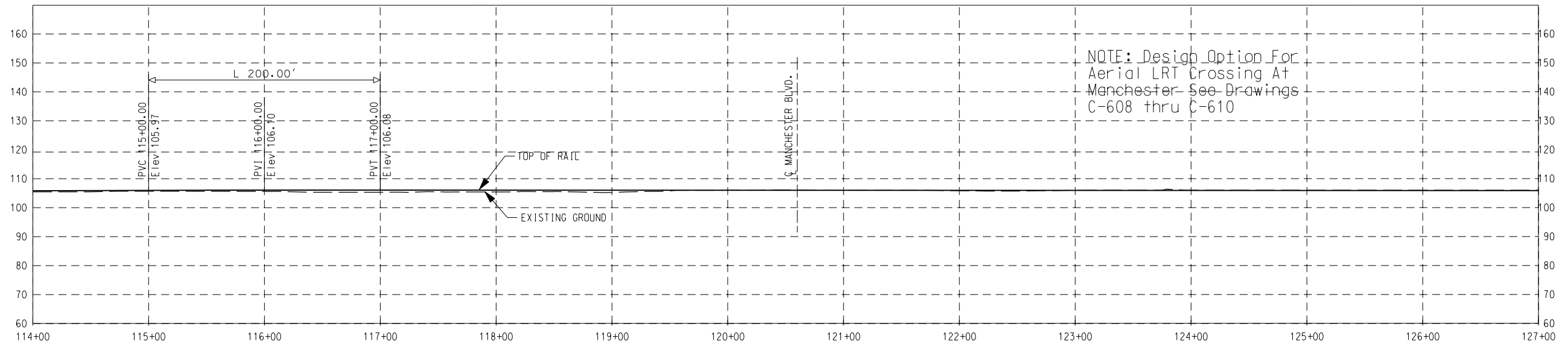
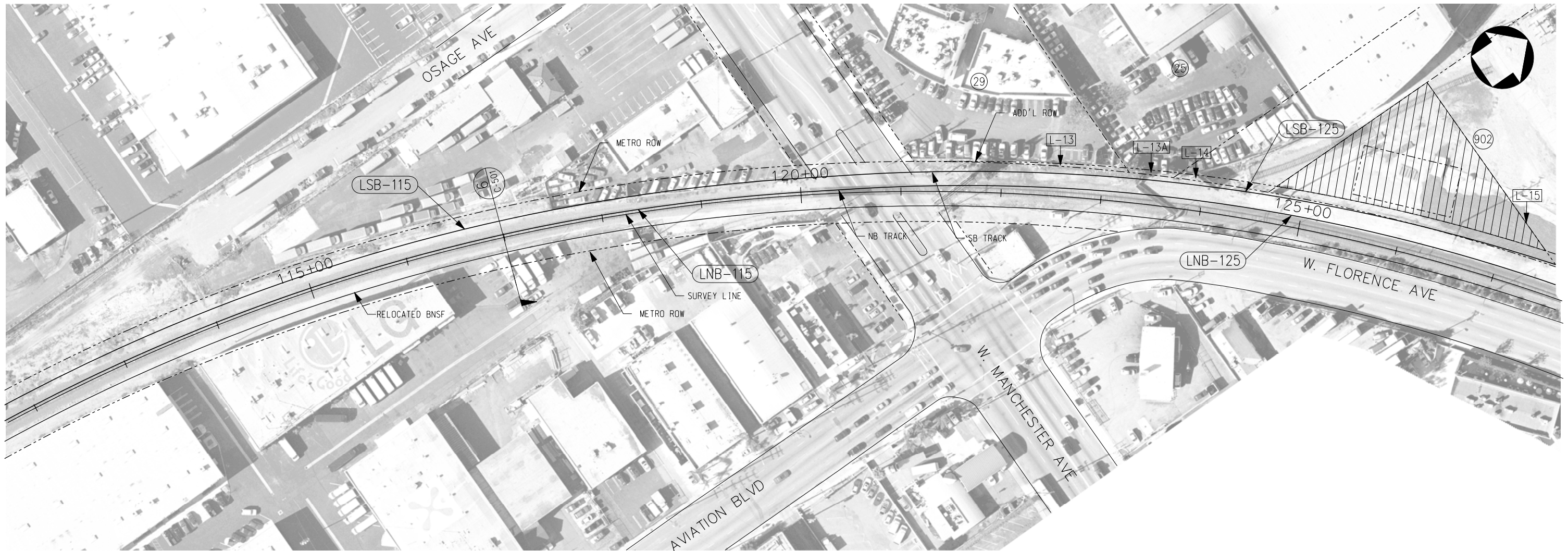
LOS ANGELES COUNTY METROPOLITAN TRANSPORTATION AUTHORITY
Crenshaw Transit Corridor Project
Parsons Brinckerhoff
 In Association with Jenkins Gales Martinez, Inc.

PROJECT MANAGER

LIGHT RAIL TRANSIT
 PLAN & PROFILE
 STA 104+00 TO STA 118+00

CONTRACT NO	PS-4330-1968
DRAWING NO	C-408
SCALE	HORIZ: 1" = 100' VERT: 1" = 40'
SHEET NO	

REV 0



THE PREPARATION OF THIS DRAWING HAS BEEN FINANCED IN PART THROUGH A GRANT FROM THE U.S. DEPARTMENT OF TRANSPORTATION, FEDERAL TRANSIT ADMINISTRATION (FTA), UNDER THE FEDERAL TRANSIT ACT OF 1964, AS AMENDED, AND IN PART BY THE TAXES OF THE CITIZENS OF LOS ANGELES COUNTY AND OF THE STATE OF CALIFORNIA.

REV	DATE	BY	APP	REG NO	EXPIRES	SEAL HOLDER	DESCRIPTION

DESIGNED BY	
DRAWN BY	
CHECKED BY	
IN CHARGE	
DATE	

M Metro LOS ANGELES COUNTY METROPOLITAN TRANSPORTATION AUTHORITY
Crenshaw Transit Corridor Project

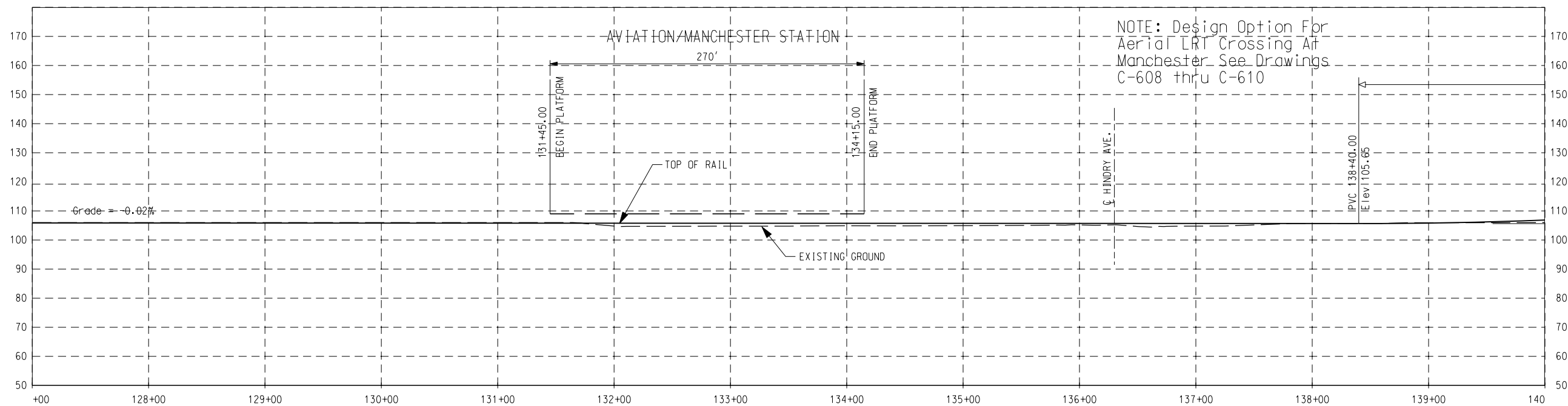
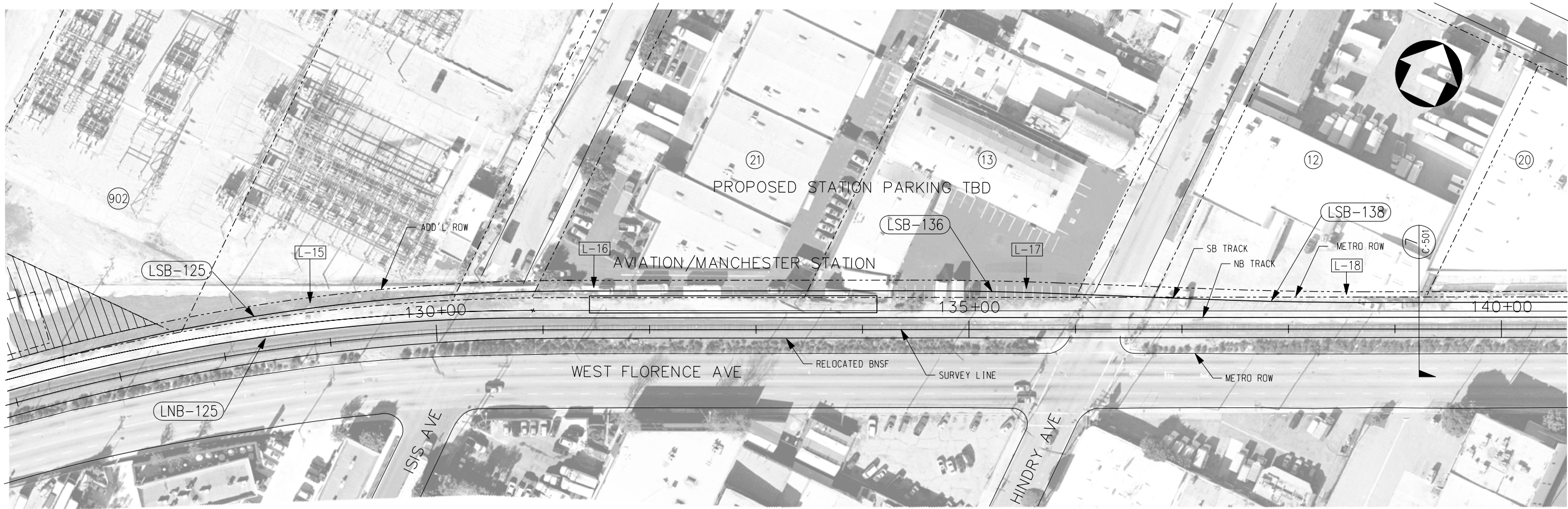
PB Parsons Brinckerhoff
 In Association with Jenkins Gales Martinez, Inc.

PROJECT MANAGER

LIGHT RAIL TRANSIT

PLAN & PROFILE
 STA 118+00 TO STA 127+00


CONTRACT NO	PS-4330-1968
DRAWING NO	C-409
SCALE	HORIZ: 1" = 100' VERT: 1" = 40'
SHEET NO	




THE PREPARATION OF THIS DRAWING HAS BEEN FINANCED IN PART THROUGH A GRANT FROM THE U.S. DEPARTMENT OF TRANSPORTATION, FEDERAL TRANSIT ADMINISTRATION (FTA), UNDER THE FEDERAL TRANSIT ACT OF 1964, AS AMENDED, AND IN PART BY THE TAXES OF THE CITIZENS OF LOS ANGELES COUNTY AND OF THE STATE OF CALIFORNIA.

REV	DATE	BY	APP	REG NO	EXPIRES	SEAL HOLDER	DESCRIPTION

DESIGNED BY	
DRAWN BY	
CHECKED BY	
IN CHARGE	
DATE	

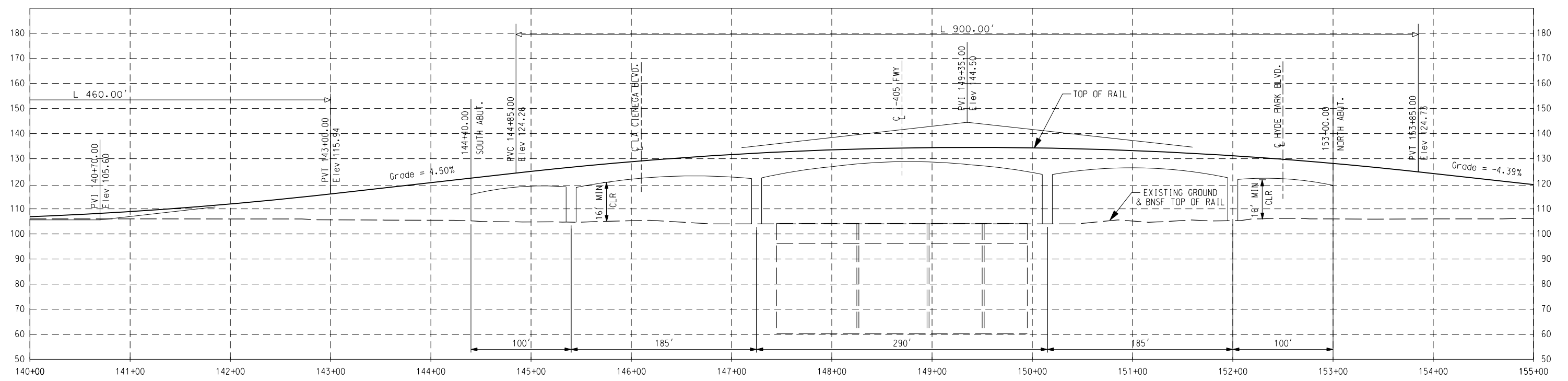
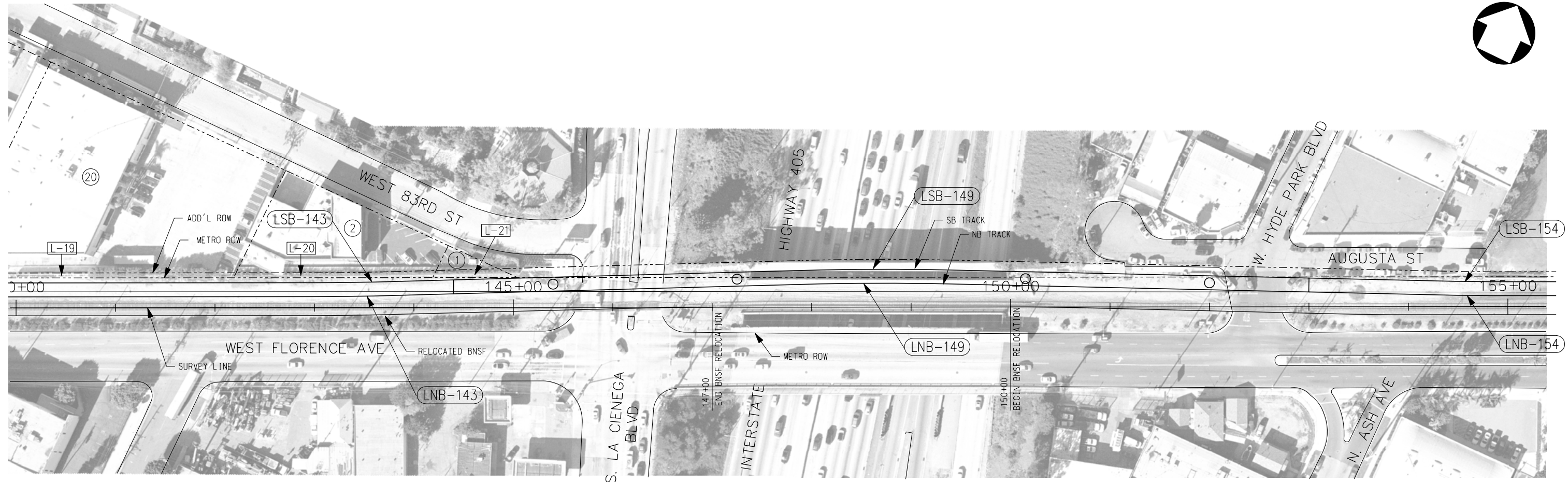
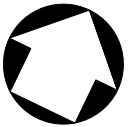

LOS ANGELES COUNTY METROPOLITAN TRANSPORTATION AUTHORITY
 Crenshaw Transit Corridor Project


Parsons Brinckerhoff
 In Association with
 Jenkins Gales Martinez, Inc.

PROJECT MANAGER

LIGHT RAIL TRANSIT
 PLAN & PROFILE
 STA 127+00 TO STA 140+00

CONTRACT NO	PS-4330-1968
DRAWING NO	C-410
SCALE	HORIZ: 1" = 100' VERT: 1" = 40'
SHEET NO	



THE PREPARATION OF THIS DRAWING HAS BEEN FINANCED IN PART THROUGH A GRANT FROM THE U.S. DEPARTMENT OF TRANSPORTATION, FEDERAL TRANSIT ADMINISTRATION (FTA), UNDER THE FEDERAL TRANSIT ACT OF 1964, AS AMENDED, AND IN PART BY THE TAXES OF THE CITIZENS OF LOS ANGELES COUNTY AND OF THE STATE OF CALIFORNIA.

REV	DATE	BY	APP	REG NO	EXPIRES	SEAL HOLDER	DESCRIPTION

DESIGNED BY	
DRAWN BY	
CHECKED BY	
IN CHARGE	
DATE	

M Metro LOS ANGELES COUNTY METROPOLITAN TRANSPORTATION AUTHORITY
Crenshaw Transit Corridor Project

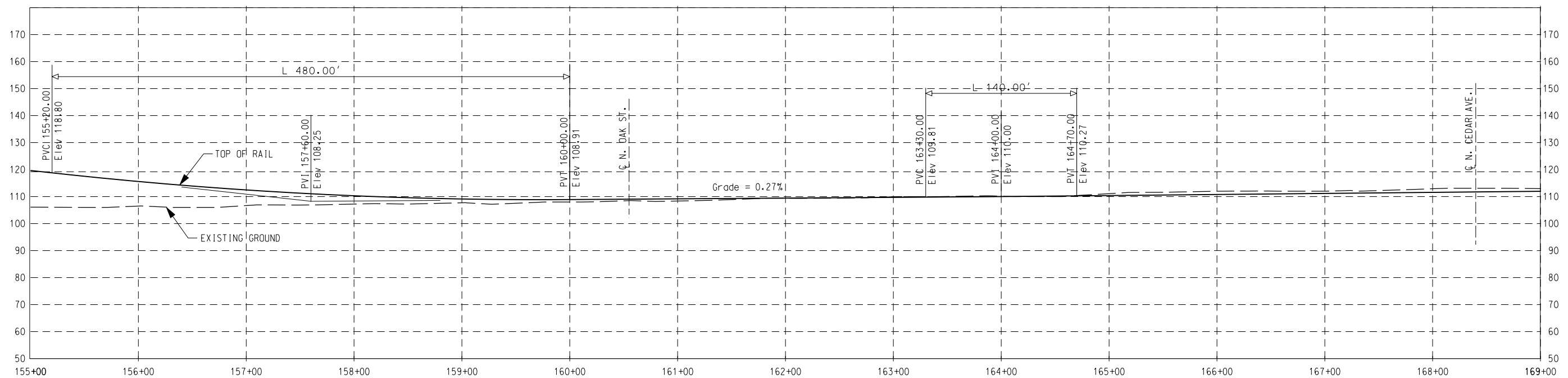
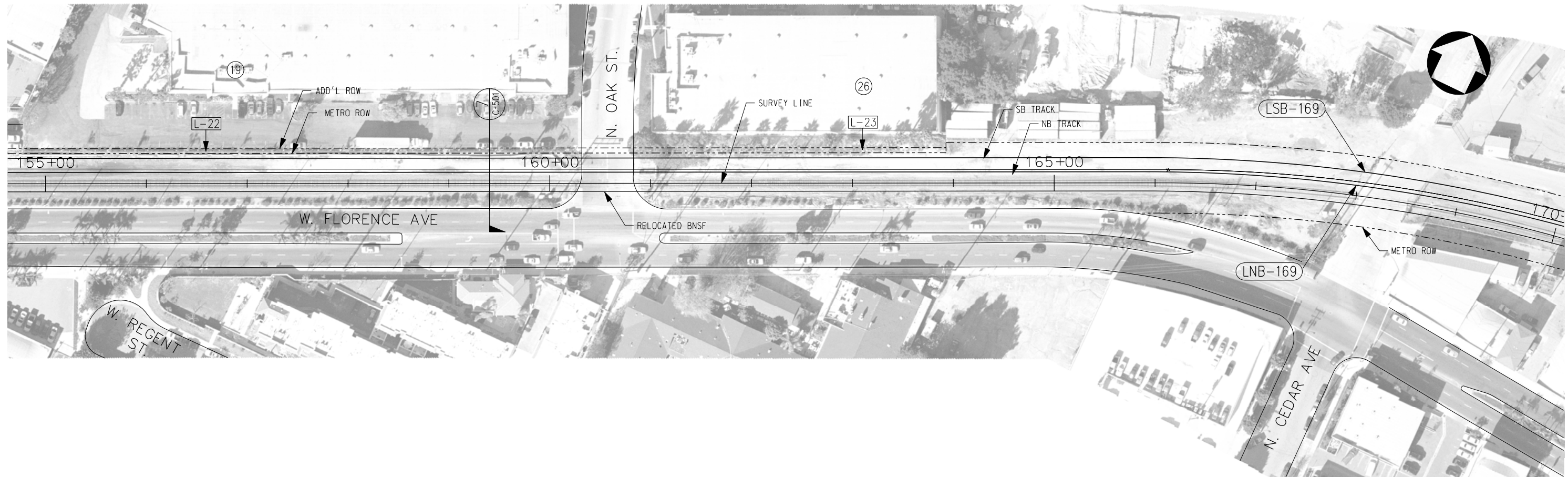
PB Parsons Brinckerhoff
 In Association with Jenkins Gales Martinez, Inc.

PROJECT MANAGER

LIGHT RAIL TRANSIT

PLAN & PROFILE
 STA 140+00 TO STA 155+00


CONTRACT NO	PS-4330-1968
DRAWING NO	C-411
REV	0
SCALE	HORIZ: 1" = 100' VERT: 1" = 40'
SHEET NO	



THE PREPARATION OF THIS DRAWING HAS BEEN FINANCED IN PART THROUGH A GRANT FROM THE U.S. DEPARTMENT OF TRANSPORTATION, FEDERAL TRANSIT ADMINISTRATION (FTA), UNDER THE FEDERAL TRANSIT ACT OF 1964, AS AMENDED, AND IN PART BY THE TAXES OF THE CITIZENS OF LOS ANGELES COUNTY AND OF THE STATE OF CALIFORNIA.

REV	DATE	BY	APP	REG NO	EXPIRES	SEAL HOLDER	DESCRIPTION

DESIGNED BY	
DRAWN BY	
CHECKED BY	
IN CHARGE	
DATE	


LOS ANGELES COUNTY METROPOLITAN TRANSPORTATION AUTHORITY
 Crenshaw Transit Corridor Project


Parsons Brinckerhoff
 In Association with
 Jenkins Gales Martinez, Inc.

PROJECT MANAGER

LIGHT RAIL TRANSIT
 PLAN & PROFILE
 STA 155+00 TO STA 169+00

CONTRACT NO	PS-4330-1968
DRAWING NO	C-412
SCALE	HORIZ: 1" = 100' VERT: 1" = 40'
SHEET NO	0