

THE PREPARATION OF THIS DRAWING HAS BEEN FINANCED IN PART THROUGH A GRANT FROM THE U.S. DEPARTMENT OF TRANSPORTATION, FEDERAL TRANSIT ADMINISTRATION (FTA), UNDER THE FEDERAL TRANSIT ACT OF 1964, AS AMENDED, AND IN PART BY THE TAXES OF THE CITIZENS OF LOS ANGELES COUNTY AND OF THE STATE OF CALIFORNIA.

REV	DATE	BY	APP	REG NO	EXPIRES	SEAL HOLDER	DESCRIPTION

DESIGNED BY	
DRAWN BY	
CHECKED BY	
IN CHARGE	
DATE	



LOS ANGELES COUNTY METROPOLITAN TRANSPORTATION AUTHORITY
Crenshaw Transit Corridor Project

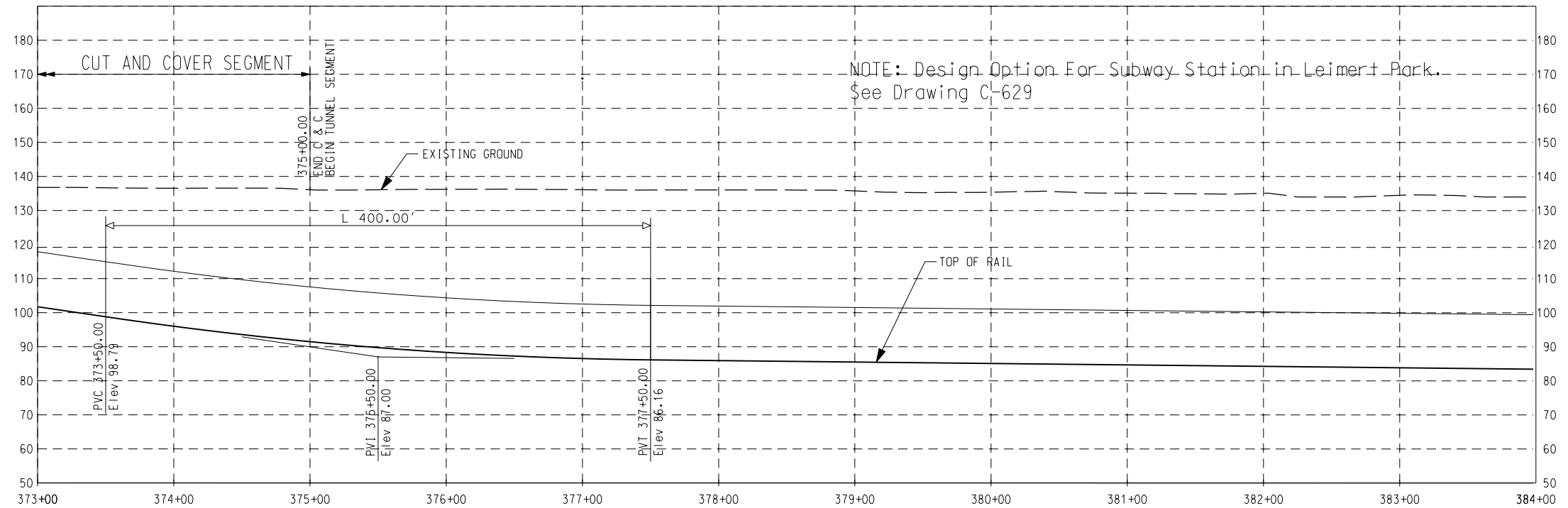
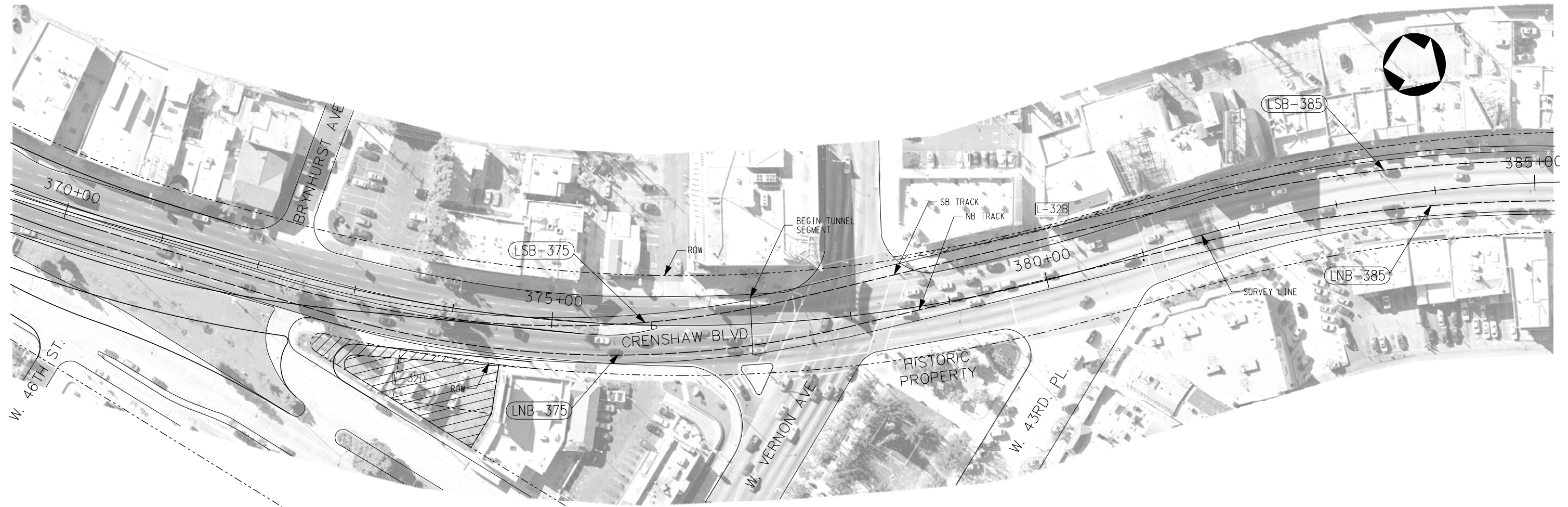
Parsons Brinckerhoff
 In Association with
 Jenkins Gales Martinez, Inc.

PROJECT MANAGER

LIGHT RAIL TRANSIT

PLAN & PROFILE
 STA 359+00 TO STA 373+00

CONTRACT NO. PS-4330-1968
 DRAWING NO. C-428 REV 0
 SCALE HORIZ: 1" = 100'
 VERT: 1" = 40'
 SHEET NO.



THE PREPARATION OF THIS DRAWING HAS BEEN FINANCED IN PART THROUGH A GRANT FROM THE U.S. DEPARTMENT OF TRANSPORTATION, FEDERAL TRANSIT ADMINISTRATION (FTA), UNDER THE FEDERAL TRANSIT ACT OF 1964, AS AMENDED, AND IN PART BY THE TAXES OF THE CITIZENS OF LOS ANGELES COUNTY AND OF THE STATE OF CALIFORNIA.

REV	DATE	BY	APP	REG NO	EXPIRES	SEAL HOLDER	DESCRIPTION

DESIGNED BY	
DRAWN BY	
CHECKED BY	
IN CHARGE	
DATE	



LOS ANGELES COUNTY METROPOLITAN TRANSPORTATION AUTHORITY
Crenshaw Transit Corridor Project

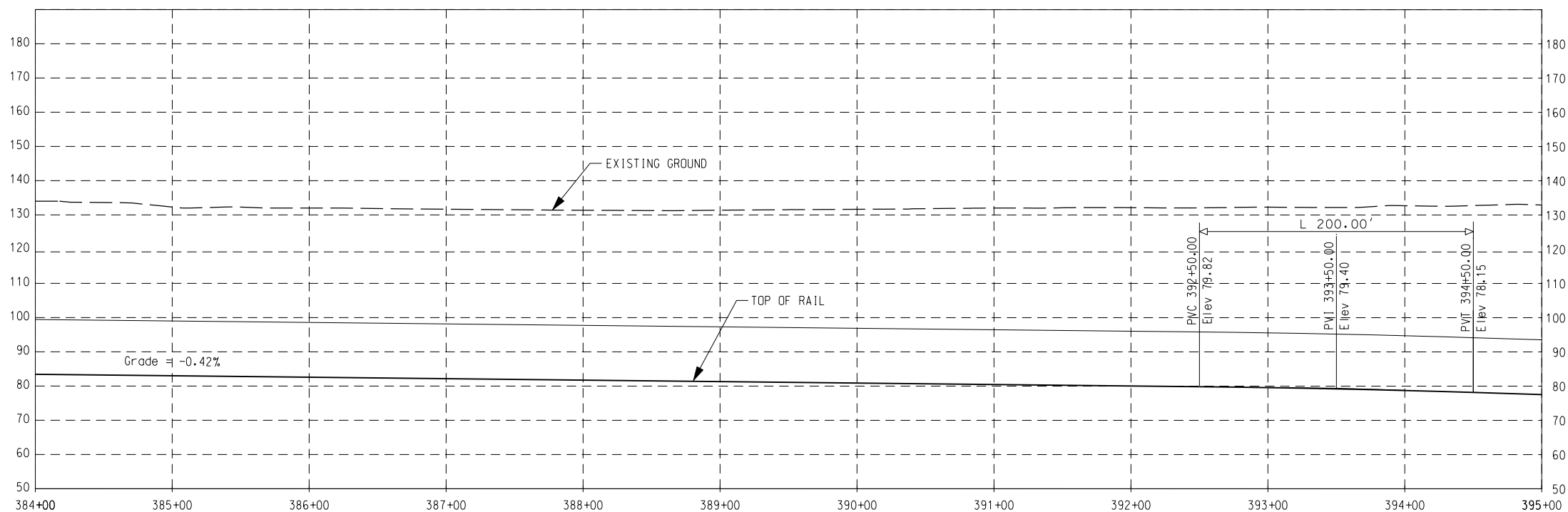
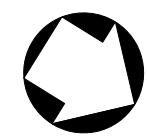
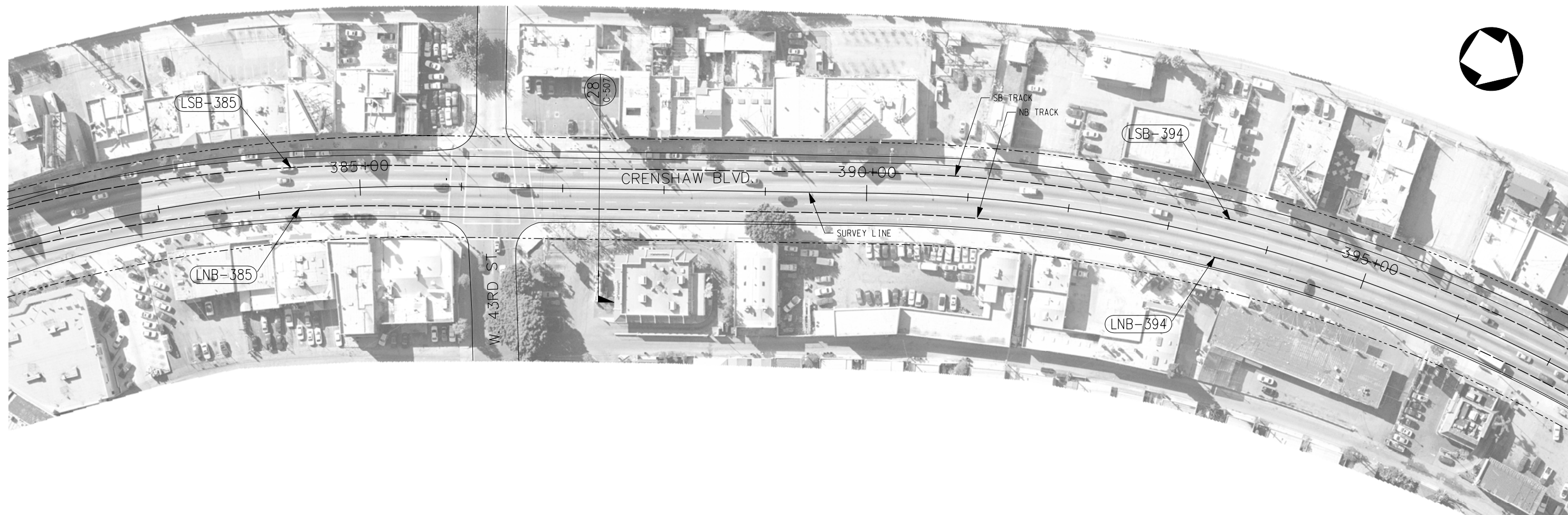
Parsons Brinckerhoff
 In Association with
 Jenkins Gales Martinez, Inc.

PROJECT MANAGER

LIGHT RAIL TRANSIT

PLAN & PROFILE
 STA 373+00 TO STA 384+00

CONTRACT NO	PS-4330-1968
DRAWING NO	C-429
SCALE	HORIZ: 1" = 100' VERT: 1" = 40'
SHEET NO	0



THE PREPARATION OF THIS DRAWING HAS BEEN FINANCED IN PART THROUGH A GRANT FROM THE U.S. DEPARTMENT OF TRANSPORTATION, FEDERAL TRANSIT ADMINISTRATION (FTA), UNDER THE FEDERAL TRANSIT ACT OF 1964, AS AMENDED, AND IN PART BY THE TAXES OF THE CITIZENS OF LOS ANGELES COUNTY AND OF THE STATE OF CALIFORNIA.

REV	DATE	BY	APP	REG NO	EXPIRES	SEAL HOLDER	DESCRIPTION

DESIGNED BY	
DRAWN BY	
CHECKED BY	
IN CHARGE	
DATE	

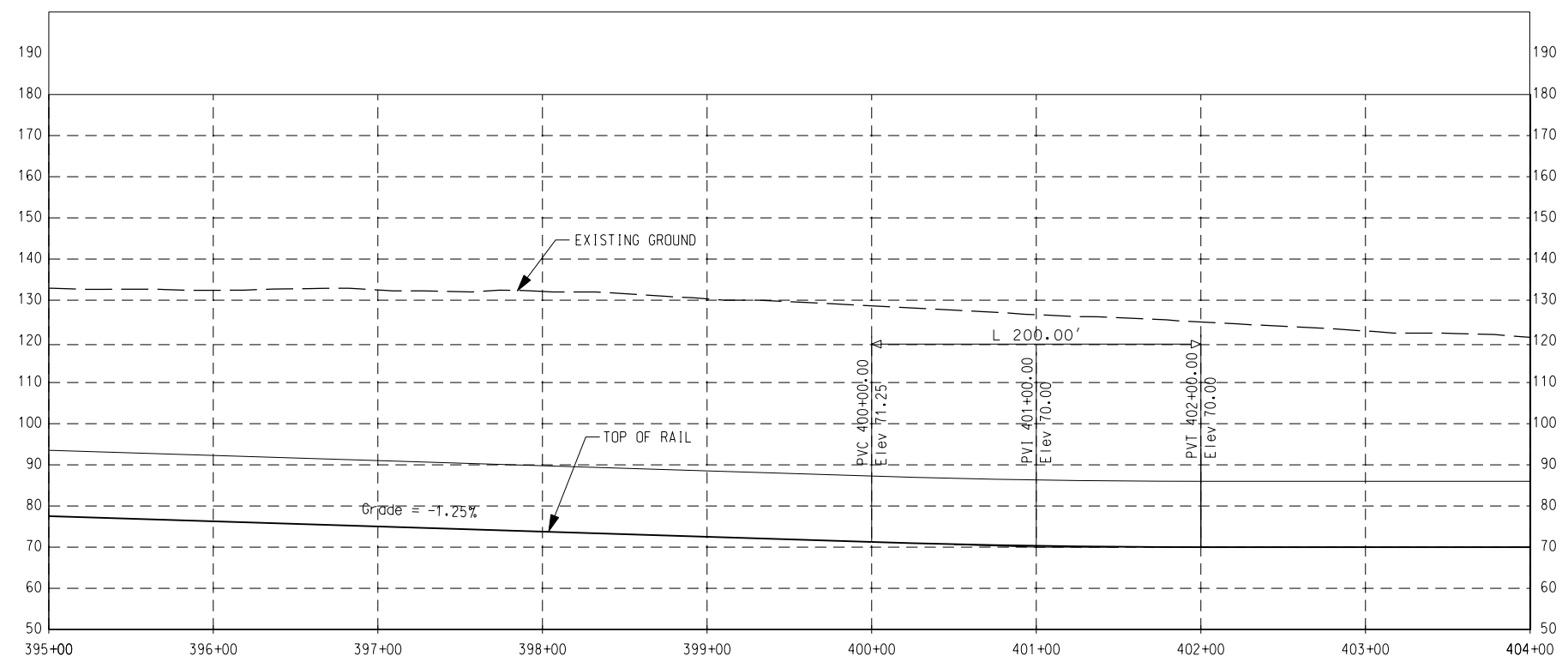
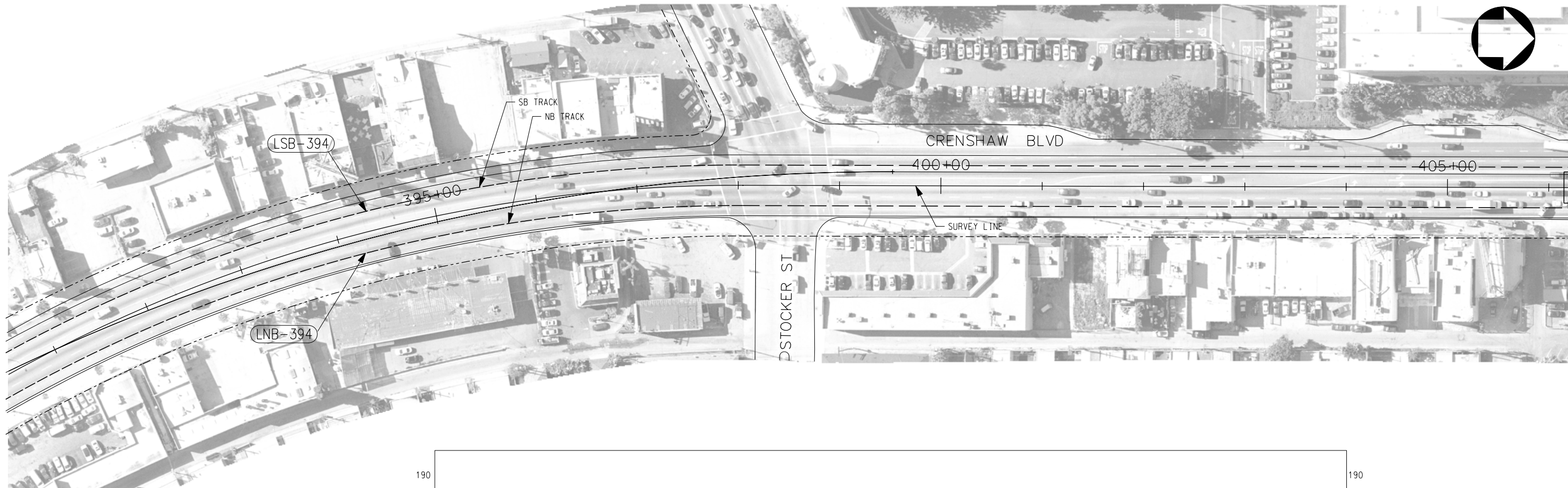


LOS ANGELES COUNTY METROPOLITAN TRANSPORTATION AUTHORITY
Crenshaw Transit Corridor Project
Parsons Brinckerhoff
 In Association with
 Jenkins Gales Martinez, Inc.

PROJECT MANAGER

LIGHT RAIL TRANSIT
PLAN & PROFILE
STA 384+00 TO STA 395+00

CONTRACT NO PS-4330-1968	
DRAWING NO C-430	REV 0
SCALE HORIZ: 1" = 100' VERT: 1" = 40'	
SHEET NO	



THE PREPARATION OF THIS DRAWING HAS BEEN FINANCED IN PART THROUGH A GRANT FROM THE U.S. DEPARTMENT OF TRANSPORTATION, FEDERAL TRANSIT ADMINISTRATION (FTA), UNDER THE FEDERAL TRANSIT ACT OF 1964, AS AMENDED, AND IN PART BY THE TAXES OF THE CITIZENS OF LOS ANGELES COUNTY AND OF THE STATE OF CALIFORNIA.

REV	DATE	BY	APP	REG NO	EXPIRES	SEAL HOLDER	DESCRIPTION

DESIGNED BY	
DRAWN BY	
CHECKED BY	
IN CHARGE	
DATE	

M Metro
LOS ANGELES COUNTY METROPOLITAN TRANSPORTATION AUTHORITY
 Crenshaw Transit Corridor Project

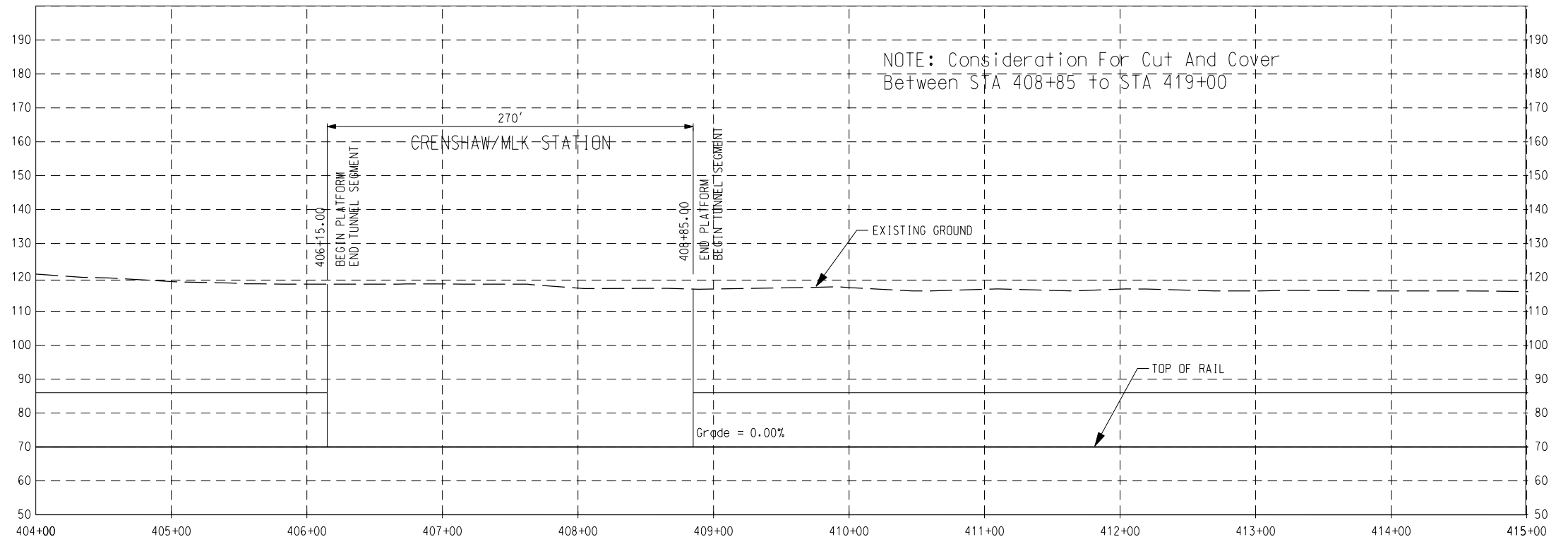
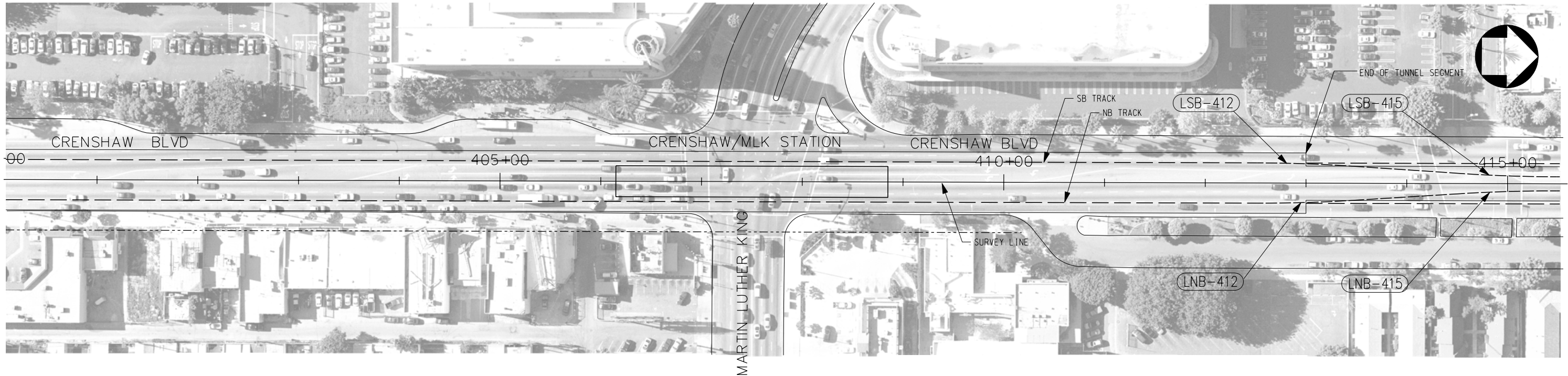
PB Parsons Brinckerhoff
 In Association with
 Jenkins Gales Martinez, Inc.

PROJECT MANAGER

LIGHT RAIL TRANSIT

PLAN & PROFILE
 STA 395+00 TO STA 404+00

CONTRACT NO	PS-4330-1968
DRAWING NO	C-431
SCALE	1"=100'
SHEET NO	



THE PREPARATION OF THIS DRAWING HAS BEEN FINANCED IN PART THROUGH A GRANT FROM THE U.S. DEPARTMENT OF TRANSPORTATION, FEDERAL TRANSIT ADMINISTRATION (FTA), UNDER THE FEDERAL TRANSIT ACT OF 1964, AS AMENDED, AND IN PART BY THE TAXES OF THE CITIZENS OF LOS ANGELES COUNTY AND OF THE STATE OF CALIFORNIA.

REV	DATE	BY	APP	REG NO	EXPIRES	SEAL HOLDER	DESCRIPTION

DESIGNED BY	
DRAWN BY	
CHECKED BY	
IN CHARGE	
DATE	

M Metro LOS ANGELES COUNTY METROPOLITAN TRANSPORTATION AUTHORITY
Crenshaw Transit Corridor Project

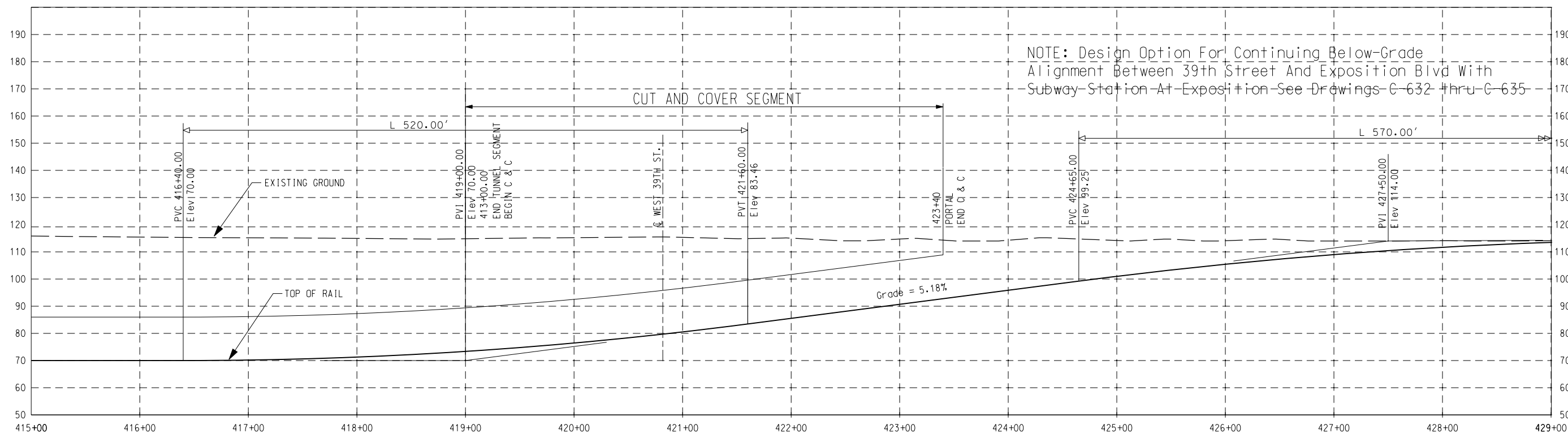
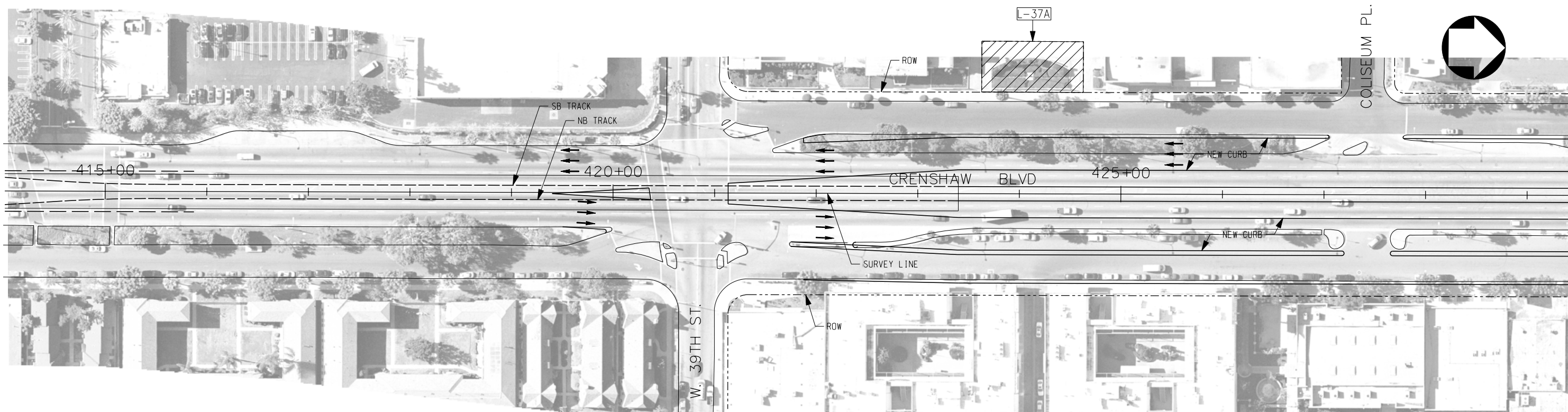
PB 100 YEARS Parsons Brinckerhoff
 In Association with Jenkins Gales Martinez, Inc.

PROJECT MANAGER

LIGHT RAIL TRANSIT

PLAN & PROFILE
 STA 404+00 TO STA 415+00

CONTRACT NO	PS-4330-1968
DRAWING NO	C-432
SCALE	HORIZ: 1" = 100' VERT: 1" = 40'
SHEET NO	0



THE PREPARATION OF THIS DRAWING HAS BEEN FINANCED IN PART THROUGH A GRANT FROM THE U.S. DEPARTMENT OF TRANSPORTATION, FEDERAL TRANSIT ADMINISTRATION (FTA), UNDER THE FEDERAL TRANSIT ACT OF 1964, AS AMENDED, AND IN PART BY THE TAXES OF THE CITIZENS OF LOS ANGELES COUNTY AND OF THE STATE OF CALIFORNIA.

REV	DATE	BY	APP	REG NO	EXPIRES	SEAL HOLDER	DESCRIPTION

DESIGNED BY	
DRAWN BY	
CHECKED BY	
IN CHARGE	
DATE	

M Metro
LOS ANGELES COUNTY METROPOLITAN TRANSPORTATION AUTHORITY
 Crenshaw Transit Corridor Project

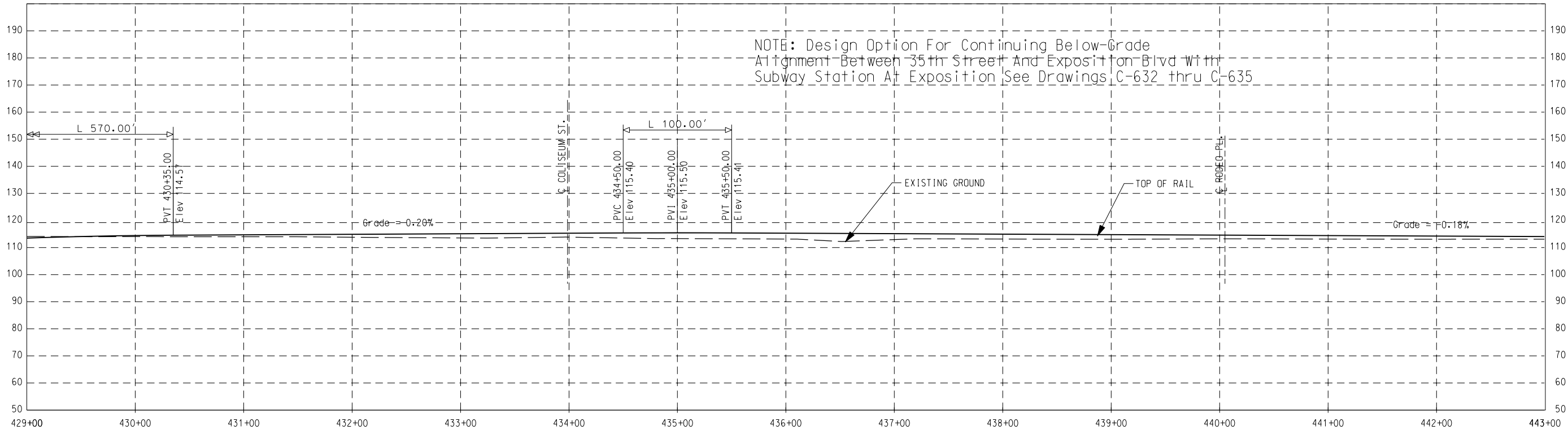
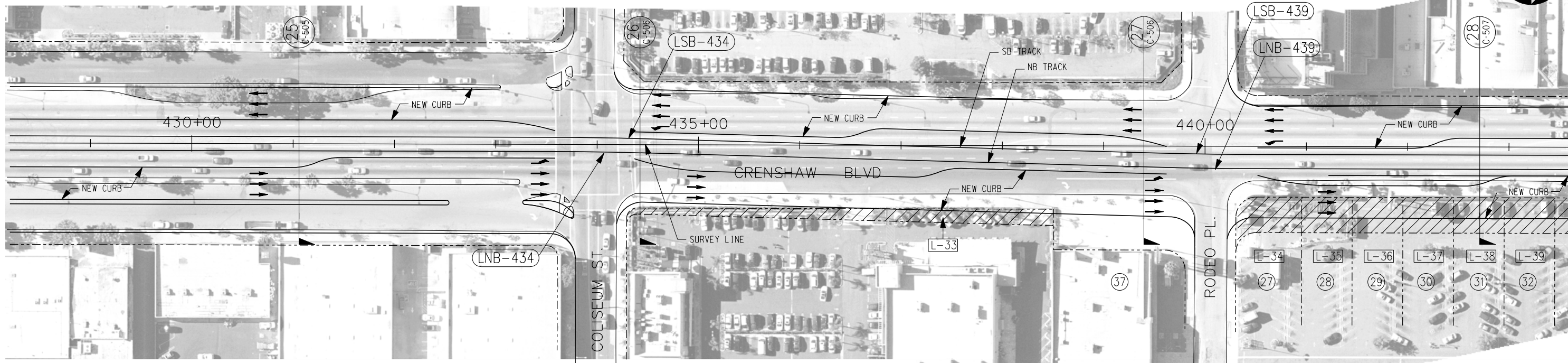
PB Parsons Brinckerhoff
 In Association with
 Jenkins Gales Martinez, Inc.

PROJECT MANAGER

LIGHT RAIL TRANSIT

PLAN & PROFILE
 STA 415+00 TO STA 429+00

CONTRACT NO. PS-4330-1968
 DRAWING NO. C-433 REV 0
 SCALE HORIZ: 1" = 100'
 VERT: 1" = 40'
 SHEET NO.



NOTE: Design Option For Continuing Below-Grade Alignment Between 35th Street And Exposition Blvd With Subway Station At Exposition See Drawings C-632 thru C-635

THE PREPARATION OF THIS DRAWING HAS BEEN FINANCED IN PART THROUGH A GRANT FROM THE U.S. DEPARTMENT OF TRANSPORTATION, FEDERAL TRANSIT ADMINISTRATION (FTA), UNDER THE FEDERAL TRANSIT ACT OF 1964, AS AMENDED, AND IN PART BY THE TAXES OF THE CITIZENS OF LOS ANGELES COUNTY AND OF THE STATE OF CALIFORNIA.

REV	DATE	BY	APP	REG NO	EXPIRES	SEAL HOLDER	DESCRIPTION

DESIGNED BY	
DRAWN BY	
CHECKED BY	
IN CHARGE	
DATE	

M Metro LOS ANGELES COUNTY METROPOLITAN TRANSPORTATION AUTHORITY
Crenshaw Transit Corridor Project

PB Parsons Brinckerhoff
In Association with Jenkins Gales Martinez, Inc.

PROJECT MANAGER

LIGHT RAIL TRANSIT
PLAN & PROFILE
STA 429+00 TO STA 443+00

CONTRACT NO	PS-4330-1968
DRAWING NO	C-434
SCALE	HORIZ: 1" = 100' VERT: 1" = 40'
SHEET NO	0