

THE PREPARATION OF THIS DRAWING HAS BEEN FINANCED IN PART THROUGH A GRANT FROM THE U.S. DEPARTMENT OF TRANSPORTATION, FEDERAL TRANSIT ADMINISTRATION (FTA), UNDER THE FEDERAL TRANSIT ACT OF 1964, AS AMENDED, AND IN PART BY THE TAXES OF THE CITIZENS OF LOS ANGELES COUNTY AND OF THE STATE OF CALIFORNIA.

REV	DATE	BY	APP	REG NO	EXPIRES	SEAL HOLDER	DESCRIPTION

DESIGNED BY	
DRAWN BY	
CHECKED BY	
IN CHARGE	
DATE	

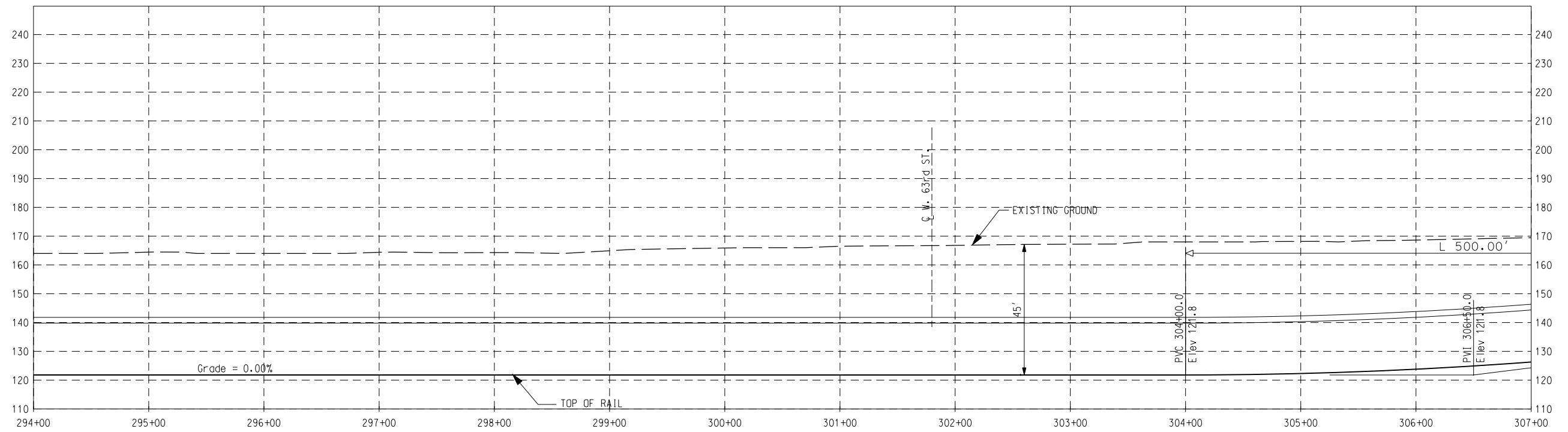
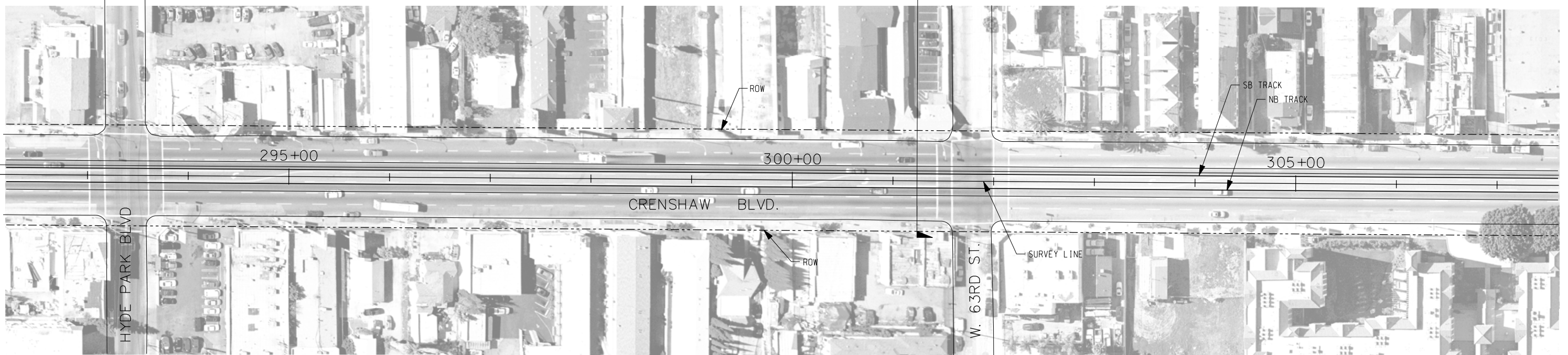
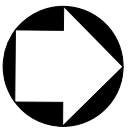
M Metro
LOS ANGELES COUNTY METROPOLITAN TRANSPORTATION AUTHORITY
Crenshaw Transit Corridor Project

PB Parsons Brinckerhoff
 In Association with
 Jenkins Gales Martinez, Inc.

PROJECT MANAGER

LIGHT RAIL TRANSIT
VICTORIA-60th STREET BELOW-GRADE
 ALTERNATIVE
 PLAN & PROFILE
 STA 284+00 TO STA 294+00

CONTRACT NO	PS-4330-1968
DRAWING NO	C-622
SCALE	HORIZ: 1" = 100' VERT: 1" = 40'
SHEET NO	0



THE PREPARATION OF THIS DRAWING HAS BEEN FINANCED IN PART THROUGH A GRANT FROM THE U.S. DEPARTMENT OF TRANSPORTATION, FEDERAL TRANSIT ADMINISTRATION (FTA), UNDER THE FEDERAL TRANSIT ACT OF 1964, AS AMENDED, AND IN PART BY THE TAXES OF THE CITIZENS OF LOS ANGELES COUNTY AND OF THE STATE OF CALIFORNIA.

REV	DATE	BY	APP	REG NO	EXPIRES	SEAL HOLDER	DESCRIPTION

DESIGNED BY	
DRAWN BY	
CHECKED BY	
IN CHARGE	
DATE	

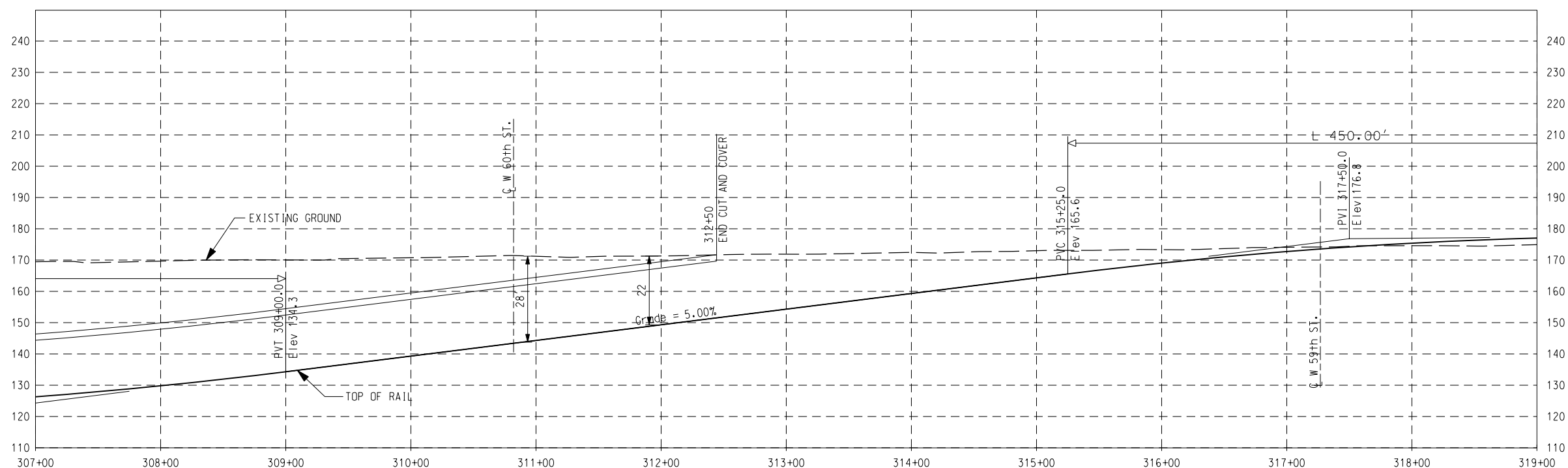
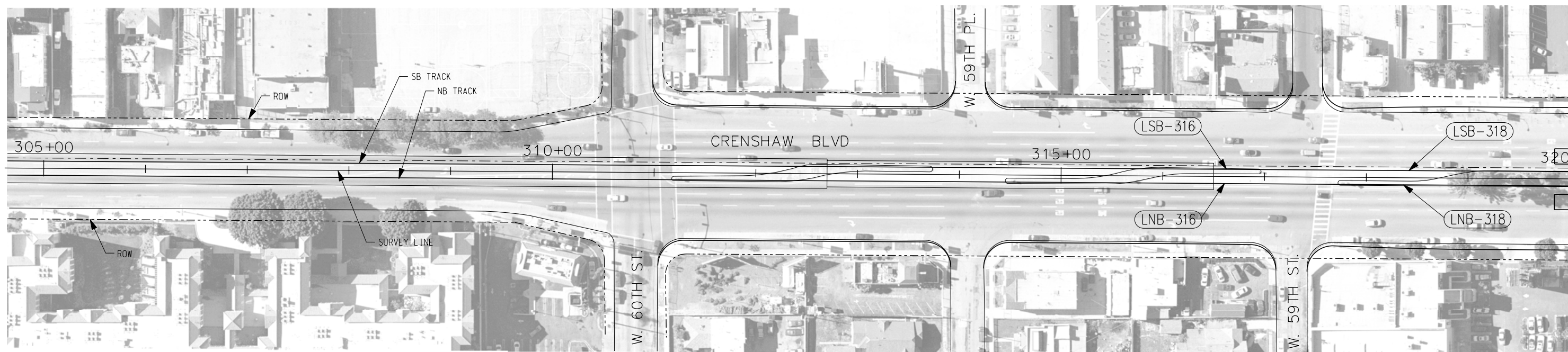
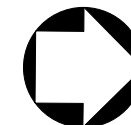
M Metro LOS ANGELES COUNTY METROPOLITAN TRANSPORTATION AUTHORITY
100 YEARS Crenshaw Transit Corridor Project

PB Parsons Brinckerhoff
 In Association with Jenkins Gales Martinez, Inc.

PROJECT MANAGER

LIGHT RAIL TRANSIT
 VICTORIA-60th STREET BELOW-GRADE
 ALTERNATIVE
 PLAN & PROFILE
 STA 294+00 TO STA 307+00

CONTRACT NO	PS-4330-1968
DRAWING NO	C-623
SCALE	HORIZ: 1" = 100' VERT: 1" = 40'
SHEET NO	0



THE PREPARATION OF THIS DRAWING HAS BEEN FINANCED IN PART THROUGH A GRANT FROM THE U.S. DEPARTMENT OF TRANSPORTATION, FEDERAL TRANSIT ADMINISTRATION (FTA), UNDER THE FEDERAL TRANSIT ACT OF 1964, AS AMENDED, AND IN PART BY THE TAXES OF THE CITIZENS OF LOS ANGELES COUNTY AND OF THE STATE OF CALIFORNIA.

REV	DATE	BY	APP	REG NO	EXPIRES	SEAL HOLDER	DESCRIPTION

DESIGNED BY	
DRAWN BY	
CHECKED BY	
IN CHARGE	
DATE	



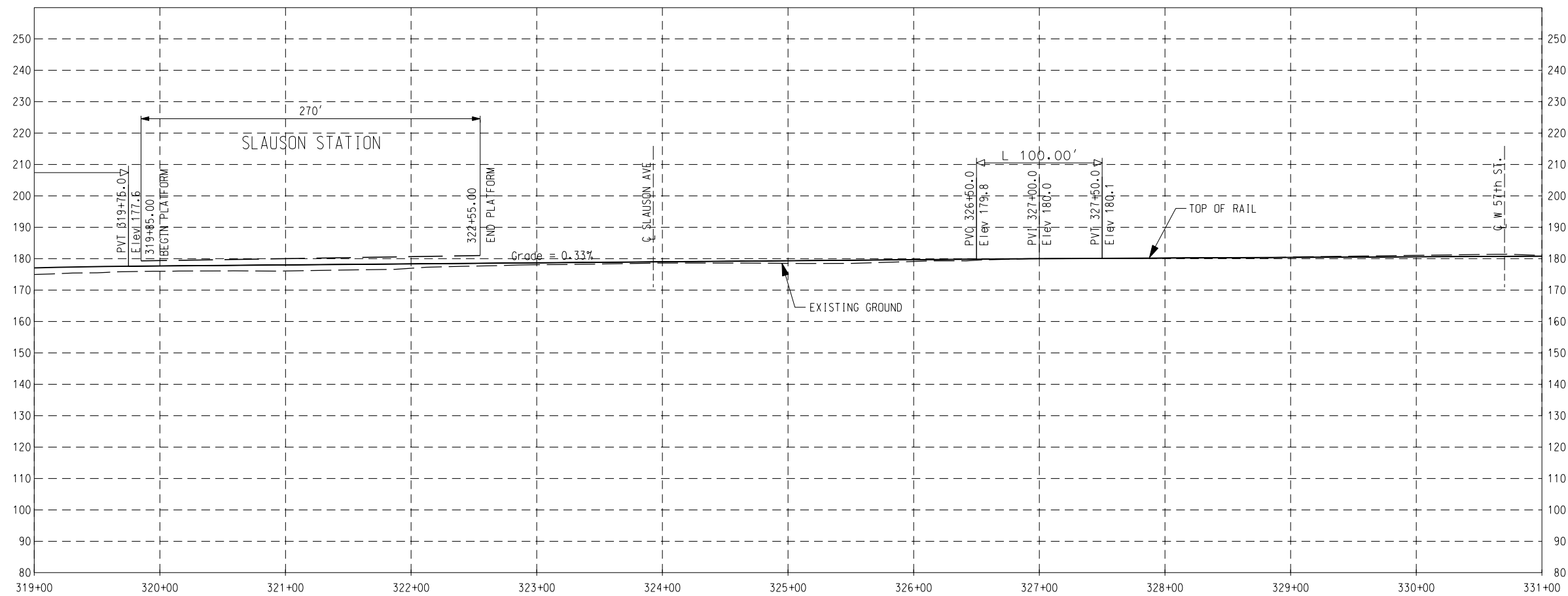
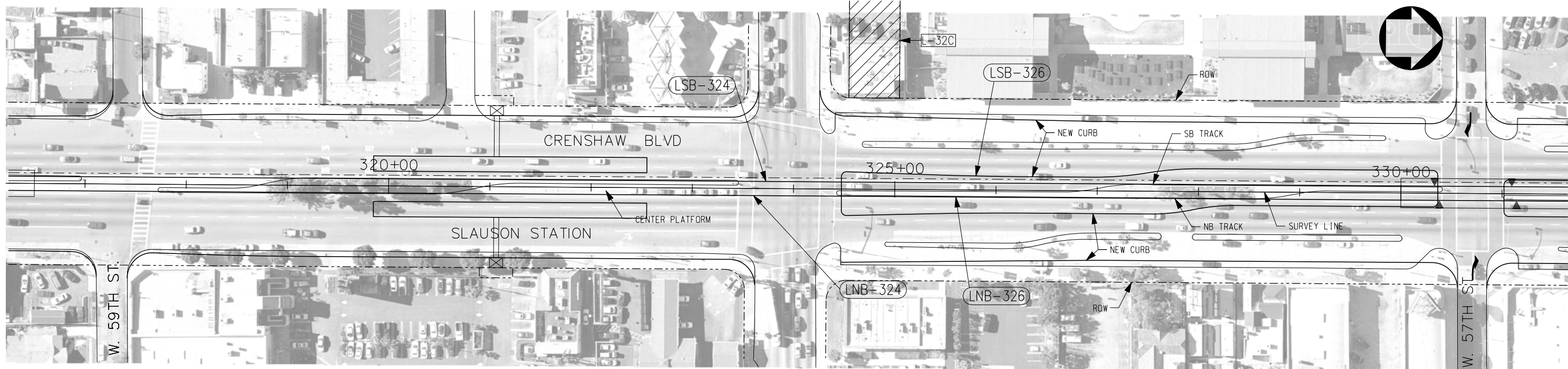
LOS ANGELES COUNTY METROPOLITAN TRANSPORTATION AUTHORITY
Crenshaw Transit Corridor Project

Parsons Brinckerhoff
 In Association with
 Jenkins Gales Martinez, Inc.

PROJECT MANAGER

LIGHT RAIL TRANSIT
VICTORIA-60th STREET BELOW-GRADE
ALTERNATIVE
PLAN & PROFILE
STA 307+00 TO STA 319+00

CONTRACT NO	PS-4330-1968
DRAWING NO	C-624
SCALE	HORIZ: 1" = 100' VERT: 1" = 40'
SHEET NO	0



THE PREPARATION OF THIS DRAWING HAS BEEN FINANCED IN PART THROUGH A GRANT FROM THE U.S. DEPARTMENT OF TRANSPORTATION, FEDERAL TRANSIT ADMINISTRATION (FTA), UNDER THE FEDERAL TRANSIT ACT OF 1964, AS AMENDED, AND IN PART BY THE TAXES OF THE CITIZENS OF LOS ANGELES COUNTY AND OF THE STATE OF CALIFORNIA.

REV	DATE	BY	APP	REG NO	EXPIRES	SEAL HOLDER	DESCRIPTION

DESIGNED BY	
DRAWN BY	
CHECKED BY	
IN CHARGE	
DATE	

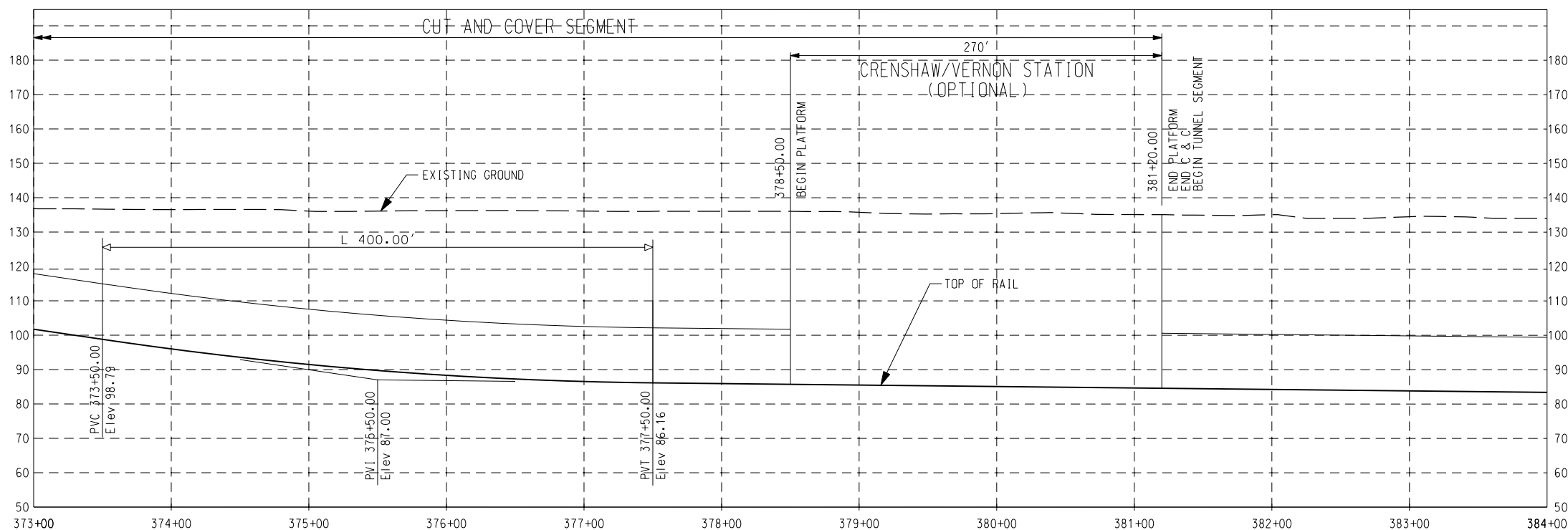
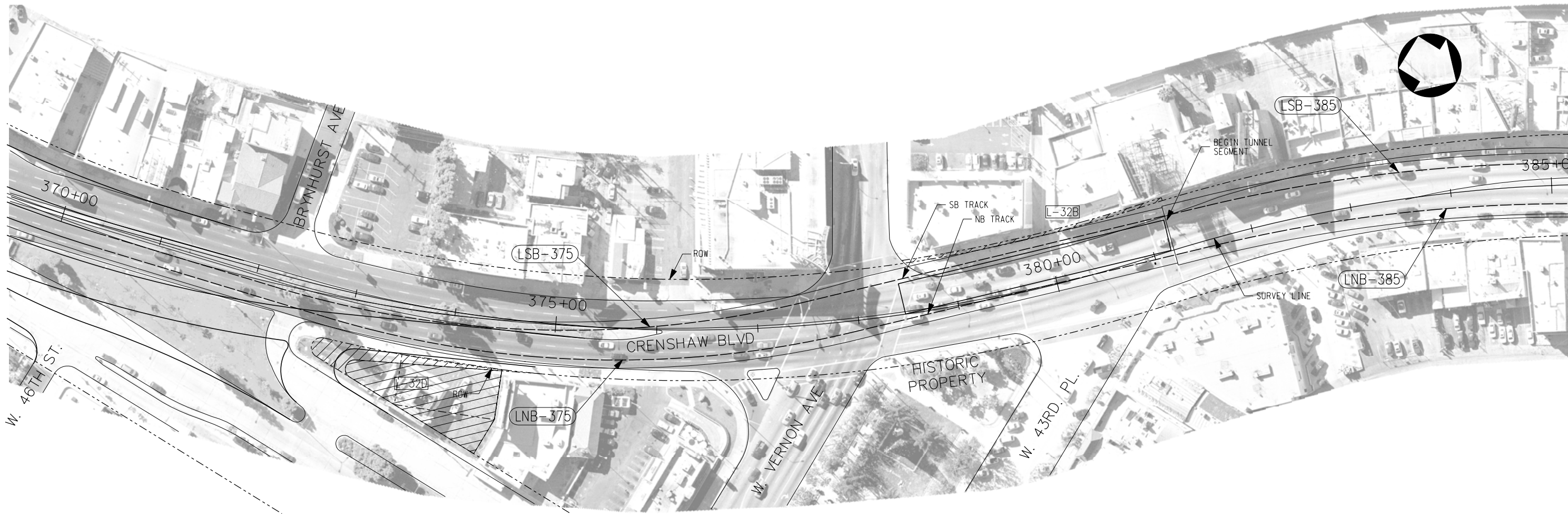
M Metro LOS ANGELES COUNTY METROPOLITAN TRANSPORTATION AUTHORITY
Crenshaw Transit Corridor Project

PB Parsons Brinckerhoff
 In Association with Jenkins Gales Martinez, Inc.

PROJECT MANAGER

LIGHT RAIL TRANSIT
 VICTORIA-60th STREET BELOW-GRADE
 ALTERNATIVE
 PLAN & PROFILE
 STA 319+00 TO STA 331+00

CONTRACT NO	PS-4330-1968
DRAWING NO	C-625
SCALE	HORIZ: 1" = 100' VERT: 1" = 40'
SHEET NO	0



THE PREPARATION OF THIS DRAWING HAS BEEN FINANCED IN PART THROUGH A GRANT FROM THE U.S. DEPARTMENT OF TRANSPORTATION, FEDERAL TRANSIT ADMINISTRATION (FTA), UNDER THE FEDERAL TRANSIT ACT OF 1964, AS AMENDED, AND IN PART BY THE TAXES OF THE CITIZENS OF LOS ANGELES COUNTY AND OF THE STATE OF CALIFORNIA.

REV	DATE	BY	APP	REG NO	EXPIRES	SEAL HOLDER	DESCRIPTION

DESIGNED BY	
DRAWN BY	
CHECKED BY	
IN CHARGE	
DATE	

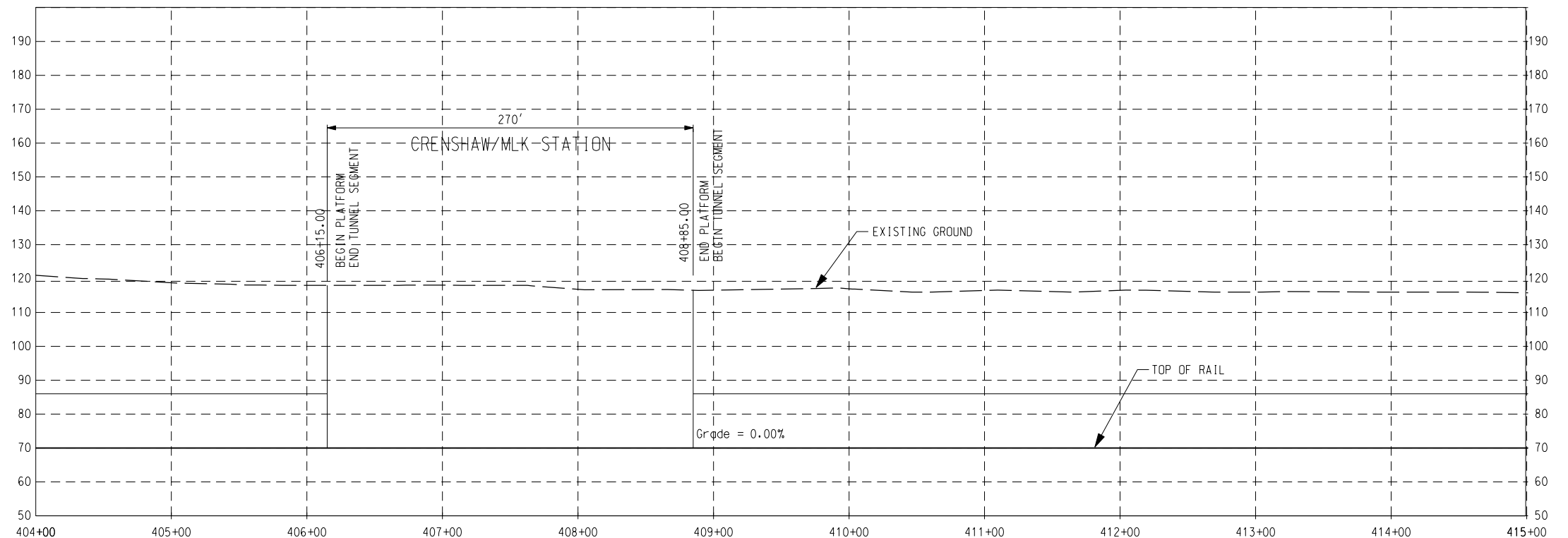
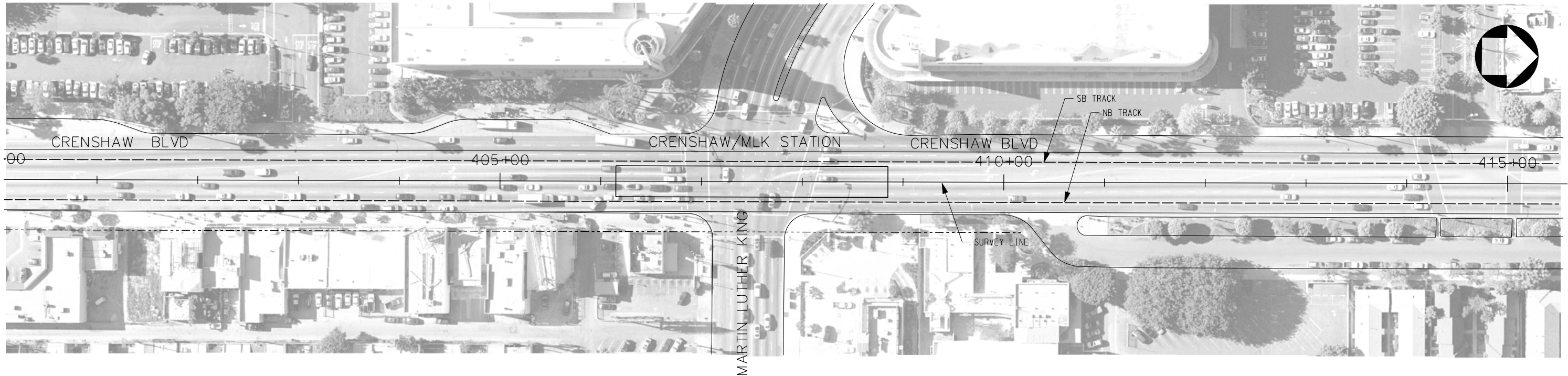
M Metro LOS ANGELES COUNTY METROPOLITAN TRANSPORTATION AUTHORITY
Crenshaw Transit Corridor Project

PB Parsons Brinckerhoff
 In Association with Jenkins Gales Martinez, Inc.

PROJECT MANAGER

LIGHT RAIL TRANSIT
 CRENSHAW/VERNON STATION
 ALTERNATIVE SITE
 PLAN & PROFILE
 STA 373+00 TO STA 384+00

CONTRACT NO	PS-4330-1968
DRAWING NO	C-629
SCALE	HORIZ: 1" = 100' VERT: 1" = 40'
SHEET NO	0



THE PREPARATION OF THIS DRAWING HAS BEEN FINANCED IN PART THROUGH A GRANT FROM THE U.S. DEPARTMENT OF TRANSPORTATION, FEDERAL TRANSIT ADMINISTRATION (FTA), UNDER THE FEDERAL TRANSIT ACT OF 1964, AS AMENDED, AND IN PART BY THE TAXES OF THE CITIZENS OF LOS ANGELES COUNTY AND OF THE STATE OF CALIFORNIA.

REV	DATE	BY	APP	REG NO	EXPIRES	SEAL HOLDER	DESCRIPTION

DESIGNED BY	
DRAWN BY	
CHECKED BY	
IN CHARGE	
DATE	

M Metro
LOS ANGELES COUNTY METROPOLITAN TRANSPORTATION AUTHORITY
 Crenshaw Transit Corridor Project

PB Parsons Brinckerhoff
 In Association with
 Jenkins Gales Martinez, Inc.

PROJECT MANAGER

LIGHT RAIL TRANSIT
 BELOW-GRADE ALTERNATIVE
 TO EXPOSITION BLVD
 PLAN & PROFILE
 STA 404+00 TO STA 415+00

CONTRACT NO PS-4330-1968	
DRAWING NO C-632	REV 0
SCALE HORIZ: 1" = 100' VERT: 1" = 40'	
SHEET NO	