



LOS ANGELES COUNTY TRANSPORTATION COMMISSION 818 West Seventh Street, Suite 1100, Los Angeles, 90017 (213) 623-1194

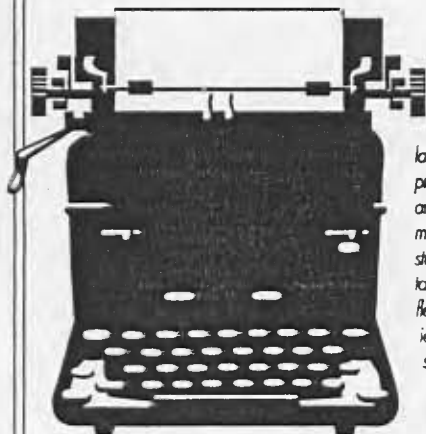
The LACTC Staff Newsletter "All the news that's unfit to print"

Editor's Note:

Welcome to INSIDE MOVES. Although this is only our second issue of the new and revised employee newsletter, we think you'll notice an improvement over our last issue. Not only are the photos much clearer thanks to the geniuses in our Graphics Department, but we now have the eagle eye of an editorial expert to contend with. Wendy Taylor, a 1988 winner of an International Association of Business Communicators (IABC) Gold Quill award, has joined our Communications Department. Her feature articles have appeared in such places as the L.A. Times View Section. She'll be a valuable editorial resource for all our publications.

Speaking of writers, INSIDE MOVES welcomes employee contributions. This issue is chock full of wisdom, insight and personal experiences contributed by LACTC employees. Claudette Moody tells us how the recent re-organization has affected her department and explains the Intergovernmental Relations division. Also, Julie Austin gives us her impression of the Blue Line, Glenda Johnson announces one of her most exciting personal achievements, and Clara Potes contributes an update on the Art for Rail Transit (ART) program. The LACTC has more than 300 employees and all of us have a story to tell. Whether it's about your work or an exciting tale about your "outside" life, INSIDE MOVES welcomes your voice.

Kind Regards
Roberta Tinajero
INSIDE MOVES editor



P.S. Many thanks to Cindy Kondo and Mary Lou Echemach who proofed our last issue. However, to my surprise, Mary Lou added an item announcing that I would report on my vacation. It was a working study tour on multimodal transportation, ridesharing and clean air. I flew, bused, boated, hiked, taxied, biked, hitchhiked and rode subways throughout the east coast. There—now you don't have to sit through my slide presentation.



Ed Danesh, Dave Sievers, Don Stiner, and Jim Cohen.

THE TEAM BEHIND THE GREEN LINE

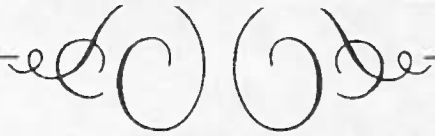
Lately, the Metro Green Line has been like the "middle child" in a family. The Blue Line gets the attention of a new baby and the Red Line is RCC's hotshot kid. But, as a matter of fact, the Green Line is well beyond its adolescent stage—its design is 95% complete and construction on the freeway section is 40% complete.

Some of RCC's most exciting work is happening on the Norwalk-to-El Segundo Green Line project. It will be the first fully automated line in the U.S. It's also the first line in our

rail transit system to involve local artists. The artists are working with the stations' architects to design the stations' public art pieces. Another unique aspect is the state-of-the-art technique being used to construct two bridges — a technique new to the RCC engineers themselves. The method involves casting concrete segments in place above ground to extend the bridge piece-by-piece.

Five RCC employees are the core Green Line team. Four are LACTC old-timers, (defined as any

cont. on next page •



• cont. from page 1
employee who worked at the old 7th street building just half a year ago.) Dave Sievers is acting project manager, Jim Cohen is construction director, Don Stiner is manager of Program Control, and Ed Danesh oversees facilities engineering. Newcomer Dan Bloomfield recently came on board to oversee system operations and integration.

In all, about 200 people are connected with the project including LACTC's construction management consultants, O'Brien Kreitzberg & Associates; the rail vehicle consultants, LTK; and our general engineering firm, commonly known to all as TRANSCAL.

Caltrans began construction in the 105 freeway corridor in April, 1982. LACTC will get access to the site to begin laying tracks in September, 1992. In the meantime, our crews will be building the three-mile aerial

guideway in El Segundo. We can expect a groundbreaking ceremony in El Segundo early next year.

The bidding process for a slick, new Green Line train begins in early 1991. The cars will arrive in 1993 for a rigorous testing routine equal to the Blue Line's pre-opening runs. The vehicles will look similar to the Blue Line trains—except there will no driver's cab. They will be powered by overhead catenary wires and operated by personnel at the Central Control Facility via a central computer. "Automation of the line allows for more frequent service and smaller stations because trains are shorter," said acting project manager Sievers. "The Operations staff will then be able to concentrate more on assisting passengers," he added.

Opening of the Metro Green Line is just three years away. For some of us, it will take that long to recover from the Blue Line project.



with AQMD and on federal and state clean air legislation and regulations. Any one working with the AQMD board has to be a diplomat, and Rebecca is a wonderful ambassador for the Commission. But, the rumor is that she plans to write citations for LACTC staff who own gas guzzlers! It's the commute hour, do you know what your tailpipe is doing?

Bevan Dufty - Administrator, Federal Affairs

Bevan works hard with our congressional delegation in Los Angeles and Washington, D.C. Just staying on top of the recent budget crunch is a job in itself, but Bevan is great at legislative balancing acts. From Capitol Hill, to the White House, to UMTA, Bevan represents the interests of the Commission with finesse and flair.

Claudette Moody - Administrator, State Affairs

Did you know that the California Legislature was one of the first professional legislatures in the country? Professional means they do it full time—not that it's done well! I deal with state issues; legislation, regulations, and other Sacramento stuff, like mosquitoes and sweltering heat. I also curse at, and prepare the budget for, the Section and manage the Legislative and Administrative Services Committee.

All three of us report directly to Neil, so you can usually find us standing outside his door, or chasing him down the corridor. Bevan does best in the chase because Rebecca and I wear heels (in the morning at least.) We all also suffer through—I mean, we have the privilege of attending,—the Strategic Team meetings on Monday.

Deidre Heitman - State Affairs Representative

Deidre is the other professional on our team. One school of thought is that she is the only professional on our team. She works on all state issues, but primarily on legislation and regulations relating to paratransit, bikeways/greenbelts (nature child that she is), and Smart Corridor. Deidre's my right hand, my left hand and my voice of reason in a mass of confusion.

Rebecca Garcia - THE BOSS

Rebecca Garcia keeps us sane. She types, she collates, she answers phones, she mails, she organizes, she reorganizes, she plans travel. And always with a smile. How she puts up with the four of us, I do not know, but we are looking into Sainthood designation.

.....

INTERGOVERNMENTAL

**RELATIONS:
ONLY THE NAMES
HAVE BEEN CHANGED**



by Claudette A. Moody

No, I am not in an Area Team. I thought I would get that out of the way first, since it is a question I am asked on a daily basis. That said, what is the Intergovernmental Relations Section and is it worth having one? Since I like my paycheck (miniscule as it is), I give a resounding YES to the latter question. As to the former question, here is the run down:

Rebecca Barrantes - Air Quality Management Admin.

Rebecca is up in the air. Workwise that is, not literally. She is the Commission's designated smog fighter, working

MOBILITY STARTS AT HOME

Even if you missed the open house of Gridlock Headquarters on the 9th floor on November 14, you still have a chance to sign up for the Ride Share program. Ron Weekly and Swylana Campos are coordinating the building's rideshare efforts. They recently hosted the



"Rideshare Week" reception in the lobby. For an alternative to solo driving call Ron or Swylana at Ext 418 or ext. 853.



PLOP ART IS OUT, ART-FOR-RAIL-TRANSIT IS IN

By Clara Potes

Five artists have been selected to undertake the art work in five stations along the second phase of the Metro Red Line. Each of them will be working with the station architects, beginning at the conceptual stage of the design process and continuing with the project through construction until stations are opened in 1998.

"Being part of the design team from the very beginning of a public art project is a big deal for an artist," said Jon Moynes, from the A-R-T program.

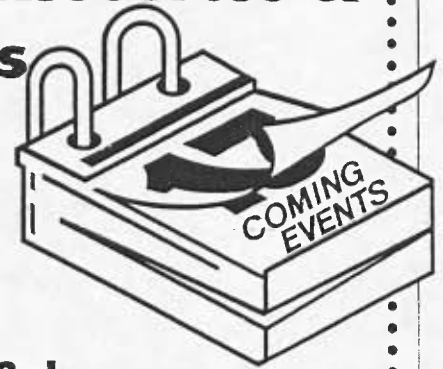
Traditionally artists have to prepare a large "studio piece" which, once finished, will be placed at

the site. In art jargon, this is known as "Plop Art" because the piece of art is "plopped down" in the plaza. "That's the kind of thing we are trying to get away from," Moynes said.

Community involvement is another big issue in public art today. Here LACTC is again setting the pace by supporting one of the most ambitious programs of community involvement. The LACTC's A-R-T program selected an Advisory Group for each station. The groups are responsible for writing a profile and history of the community surrounding each station. The information is used to select the artist for each location, and

cont. on page 4

Human Resources & Activities Depot Bulletin



By Cindy Kondo

Nov. 22nd & 23rd, Thurs. & Friday

Office closed in observance of Thanksgiving.

Nov. 28th, Wednesday

LACTC Christmas caroling kick-off meeting at 4p.m. in the Long Beach conference room. Contact song leaders Carol Martin, Geri Brodie or Mani Churanakoses for more information.

Dec. 6th, Thursday

"Brown Baggers Special" noon program in the L.A. Room on the 10th floor. Bring your lunch and find out what the EAP (employee assistance program) can do for you and/or family members. (EAP is an LACTC employee benefit.)

Dec. 15th, Saturday

LACTC Holiday Party at the L.A. Hyatt Regency 6:30pm-social hour 7:45-1pm-dinner/dance & door prizes. See or call Holiday Party Coordinators, Naomi Lupe, Lynn B., Ed S., Jose M. or Cindy K. for details.

Dec. 24, Monday

LACTC's Santa Claus Day. For employees with children who want to see where mom & dad work. The kids can meet Santa Claus and enjoy refreshments at 10am in the Lunch Room.

Dec. 25th, Tuesday (Christmas Day)

Office closed.

Jan. 1st, Tuesday (New Year's Day)

Office closed.

End of January '91

Get ready for the "Big Kahuna" Friday potluck party...a great remedy for post holiday blues!

HAPPY HOLIDAYS!

later it is used by the artist as a starting point to create the concept of the art work.

"Our community involvement in the Art-for-Rail-Transit program has become a model for public art projects in other areas of the country," Moynes said.

The following artists and architects were selected:

VERMONT/EVERLY STATION:

Richard Stone and Anil Verma Associates, Inc.

VERMONT/SANTA MONICA STATION:

Robert Millar and Ellerbe Becket, Inc.

VERMONT/SUNSET STATION:

Michael Davis and Edward C. Barker & Associates.

HOLLYWOOD/WESTERN STATION:

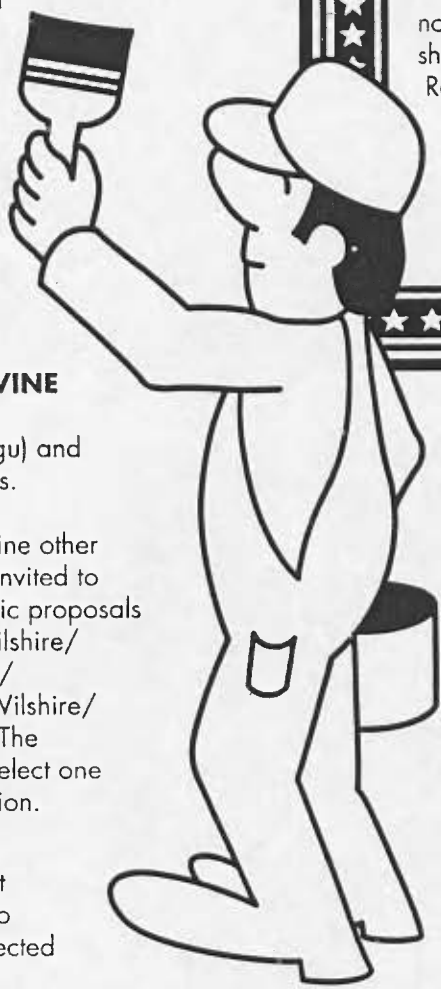
May Sun and Escudero-Fribourg Architects.

HOLLYWOOD/VINE STATION:

Gilbert Lujan (Magu) and Miralles Associates.

Meanwhile, nine other artists have been invited to prepare site-specific proposals for work at the Wilshire/Vermont, Wilshire/Normandie and Wilshire/Western stations. The Commission will select one artist for each station.

Artists for the stations on the first phase of the Metro Red Line were selected



**"WHICH WAY DO I GO?
WHICH WAY DO I GO?"**

Are you lost looking for someone's office? You are not alone. As our staff grows, departments are shuffled about in a rearrangement of office space. Recent moves to remember are:

Contract Compliance	9th Floor
(moving to 10th floor in December)	
Internal Audit	9th Floor
RCC moves in late November	5th and 6th Floors

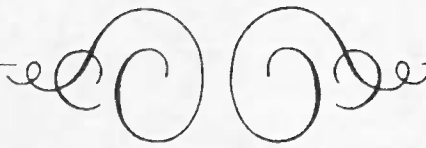
by the RTD. Management of their work was transferred to the LACTC's A-R-T program when management of rail design and construction was consolidated under the RCC.

Recently the A-R-T program began selecting artists for the Blue Line. Since the

A-R-T program was not established when the Blue Line was in the design stages, the artists will add the art work to the finished stations.

Los Angeles' artist Tom Eatherton was selected from a group of six to create a neon and reflective materials work of art for the Flower Street tunnel on the Metro Blue Line.

Eatherton's work will create sequential compositions of color and light. "The piece will appear different to everyone who sees it and different every time one sees it," said Jessica Cusick, LACTC's Public Art Administrator.



Blue Line Blues

By Julie Austin



A BABY AND A BUS RIDE CHANGED HER LIFE

Glenda Johnson, an LACTC contract analyst, was watching the Phil Donahue Show four years ago when she saw a public service announcement recruiting foster parents for the L.A. County Children's Services. That 30-second TV spot changed her life. This October 9, she became the legal mother of four-year-old Jerold William Stamps. Glenda had been a single foster parent to Jerry since he was four months old. Then one day in 1989 she accepted a blind date arranged by her bus driver. Not only did the date turn out well, in July of 1989, Glenda married Purvis Johnson, an RTD supervisor. The couple, who waited more than a year for the adoption to come through, celebrated by throwing a new "birthday" celebration for Jerry.

I love the Blue Line. I ride it every day. Every week, it seems, a new policy or procedure is introduced to improve the quality of service. The latest in a series of passenger service improvements are periodic requests from the conductors that patrons refrain from eating, smoking, drinking, playing music, or putting your feet on the chairs "as a courtesy to your fellow passengers."

I've been popped by the Sheriffs for eating a piece of candy on the train myself, but I consider that a minor infraction. I might add, however, that I've gotten away with putting my feet on the chairs several times. At any rate, I think the passenger courtesy rules should be amended to include some real annoyances. For example, passengers should be forbidden to loudly suck on their dentures while sitting within two feet of another passenger. Sleeping passengers should stay in their own space; i.e., please refrain from sleeping on your neighbor's shoulder (or snoring).

A woman with three well-behaved children sat next to me the other day. The kids were angels, but she had a most unsightly hickey prominently

displayed on her neck. It was so offensive that I was barely able to concentrate on my Stephen King novel. Might I suggest some sort of scarf or turtleneck requirement? Poor personal hygiene runs rampant on the train; however, this problem can be avoided by picking and choosing your seating partners. There are no rules against getting up and moving if a 500-pound Sumo wrestler fresh out of a match sits next to you.

Los Angeles is truly a melting pot, so I suppose it would be difficult to enforce a rule requiring people who are engaged in heated debates in exotic foreign languages to maintain an acceptable decibel level. Headphones are one solution; tolerance, perhaps, another.

Overall, our khaki-clad men of steel do an excellent job of maintaining law and order on the trains. Nothing has ever happened on the Blue Line which rivals the frustration and irritation of being stuck on the freeway. As my friend Wayne puts it:

*I have suffered the Blue Line Blues;
From loud snoring to gum on my shoes;
But when I can avoid
Those who get me annoyed
It's a service that I gladly choose.*

PERSONAL BEST



BRYNN KERNAGHAN congratulates **ALL AREA TEAM MEMBERS** for completing their draft environmental scans while also working on getting the word out on the congestion management program. The environmental scans required hundreds of extra hours and effort.

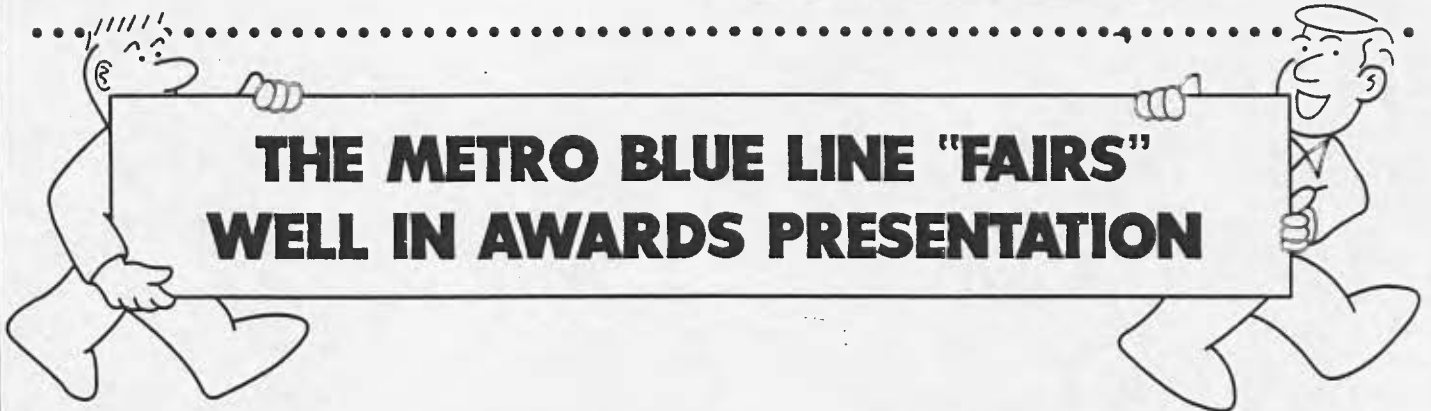
VIC KAMHI, project manager in the South Bay Area Team has been appointed to the Technical Advisory Committee on Aeronautics of the California Transportation Commission.

NORM JESTER and **ED McSPEDON** were panelists on a discussion entitled "Coping with Success and Failure" at the APTA conference in Houston. **NEIL PETERSON** served as moderator of the panel.

Have you participated in a conference, written a published paper or received an award? INSIDE MOVES wants to recognize your excellence and outstanding achievements. Please send your recent accomplishments to Roberta Tinajero in the Communication Dept., 11th floor.



ERICA GOEBEL receives the Adwheel Grand Prize from APTA Vice President Thomas P. Kujawa of Milwaukee. She was recognized for her production of the "Mandate" video, which also placed first in public relations category at the APTA Conference last month. There were 780 entries in the awards program.



Almost all county fairs present the standard awards to the biggest homegrown squash, the chocolatiest cake, and the prettiest pig. But this year besides the usual carnival rides, farm animals and cotton candy, Los Angeles County Fairgoers were able to step aboard and sit in the driver's seat of a full scale model of the front end of a Metro Blue Line train.

The Blue Line exhibit received the ribbon for the Most Educational Outdoor Booth. Hundreds of people visited

the booth daily to get information on L.A.'s newest rail transit line. Photos, literature and Metro merchandise were available, but the biggest attraction was the full-scale train mock-up. The judges were also impressed by the well-informed LACTC employee volunteers who staffed the booth. At least two volunteers were present at the booth every day during the three-week fair. Many thanks to Frank Zarider, Liz Crenshaw and David Hershenson who coordinated the effort.

FILM REVIEWS

by Claudette A. Moody

This column dwells on the "artsy" films which are traditionally released in the fall. Sorry, no Steven Seagal here.

GOODFELLAS - A

The DeNiro/Scorcese magic is alive and well in this, their fifth collaboration. This film should be required viewing for all actors and directors in training. Every single performance is a gem. Scorcese's direction is tight and structured in this depiction of criminals at work and play over a period of three decades. The Copa Cabana scene alone is worth an Oscar. Ray Liotta is wonderfully magnetic as the half-Italian mobster-wannabe. Immoral violence is rampant in this movie, but that is Scorcese's point about mafia life. Be prepared for a draining, but satisfying film experience.

FANTASIA - A

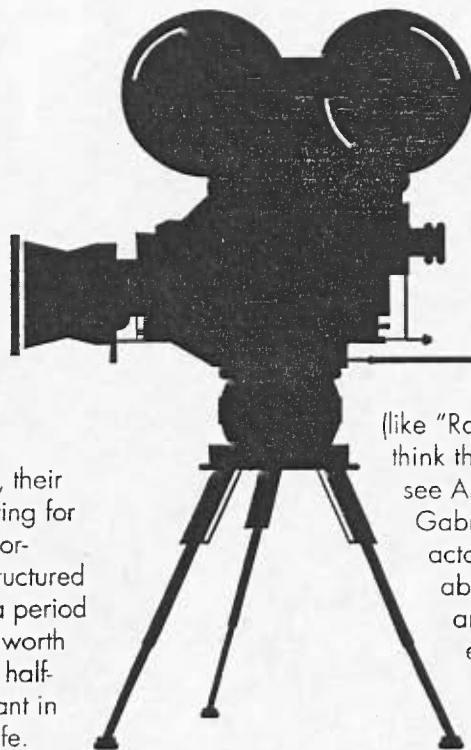
SEE IT!

AVALON - B

If you find holidays with the extended family interminably long, you may not want to spend three hours on this movie. On the other hand, you may appreciate it more than others. Just how many times does your Uncle Clyde repeat the story about the rooster? And, does anyone, including them, remember why Aunt Sophie and Aunt Mathilda are feuding? Levinson, (director of "Rain Man"), presents a heartfelt version of real events like these from his own family history. In total, Avalon is the story of how the close ties of an immigrant family can break with time and subsequent generations. But more, it shows how, with a little loving and effort, our link with the past can be maintained and strengthened. Good acting from German actor Mueller-Stahl as the grandfather and Aidan Quinn as the grandson.

WHITE HUNTER, BLACK HEART - B-

This film could be subtitled "Shoot movies, not elephants!" Ok. I know its weird to see Eastwood in an ascot, but really, he's not that bad. Really. This fictional account of the making of the "African Queen" is beautifully photographed on location and there are important messages about the racism of British Africa and the need to protect the environ-



ment. Its not perfect, (Clint's a better director than he is an actor), but its a good effort. And besides, I've always had a soft spot for "Rowdy Yates."

MILLER'S CROSSING - C+

I wanted to like this flick. I usually love the Coen brother's movies (like "Raisin' Arizona"), but I don't think this one cuts it. It's great to see Albert Finney again, and Gabriel Byrne is an interesting actor to watch. Yet, the story, about warring Irish, Italian and Jewish mobsters in the early thirties, just isn't tight. The direction was just too sluggish. The best performance comes from John Turturro (late of "Do

the Right Thing.") I've never seen that guy do a bad acting job. Check him out when you get a chance. Rent the movie, though.

HENRY AND JUNE - C-

Well, there is a lot of writhing, writing and wretchedness, but I was less than moved by this story of Henry Miller, Anais Nin and the woman they both loved, Henry's wife June. More accurately, June is the woman the others obsessed over for literary fodder. I don't know why this was considered for an "X" rating. You can see similar things on PBS' Masterpiece Theatre ("I, Claudius," especially). Anyway, the performances are dull at best. Lots of fakey pre-Nazi Parisian atmosphere. The old "Star Trek" did better atmosphere. If you're a Fred Ward fan, like I am, rent "Tremors" or catch him in "The Right Stuff." If you're into watching sex, turn on MTV.

REVERSAL OF FORTUNE - B

Although I had no expectations for this film (and besides, someone else was paying for it) I was pleasantly surprised. This is the Klaus Von Bulow (Jeremy Irons) story told in a very unique way, through a comatose narrator (Sunny Von Bulow, played by Glenn Close). I had forgotten that Jeremy Irons was such a good actor. Like a typical American juror, I went with a predetermined notion of Von Bulow's guilt. I left not so sure of the arrogant SOB's guilt, but thoroughly entertained.

DON'T TOUCH MY PEN!!!



A REPORT ON THE SUPPLY CRUNCH

Gray Crary was in my office one day last week explaining some commuter rail item to me when he reached over to pick up my one-and-only Bic blue medium point pen. On impulse I screamed "don't touch that!" I embarrassed myself just at the thought that I almost slapped his knuckles. It was then that I realized that something is askew in our office supply procedures. Gone are the days when we shopped the aisles of the stock room for multicolored pens, post-its in every size, and file folders galore. The best part about those shopping excursions were that there was no cashier, a visible one that is. Apparently the "storehouse method" can be quite costly.

Under the new system, a designated person is responsible for ordering each section's equipment. But there's been some grumbling about people not getting what they need. The good news is that Caprice Young promises a change in the system that will speed up the ordering and delivery process. An easy ordering form has been developed, listing the 50 most commonly used items. The form goes to the Rene Robles or Robert Ramos on the 9th floor. They in turn, fax the order to our supplier who promises next-day delivery. "This form should streamline the process. We'll give it a try and we're open to suggestions on how to improve it," said Caprice.

Caprice also says that this improvement will prevent people from feeling that they have to hoard supplies because it's such an ordeal to get more. I was glad to hear that because every time I open my top drawer, out pops several plastic file tabs. —R.T.

AREA TEAM ADDITIONS



Judi Smith joined the San Fernando Valley/North County team as an administrative assistant.

New Westside wizards are Chris Robert, public process specialist & project managers Carol Inge and Ellen Gelbard.



David Barnhart is the director of the Southeast Area.

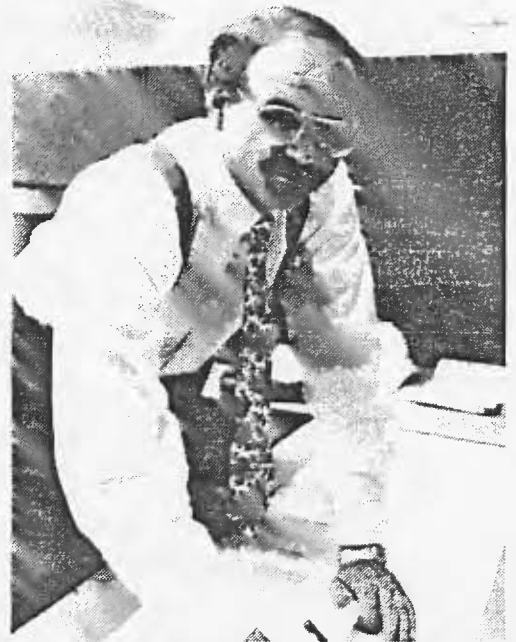
A STRATEGIC SUPPORT SMILE

Linda Riemer juggles the busy calendar of the executive director's office.





RECENT HIRES TO THE RAIL CONSTRUCTION CORPORATION



(right) RCC Executive Vice President of Technical Operations Tom Tanke, takes a quick break for the camera.



(left) Kathy Jones Irish, RCC public affairs officer, will be working with the community on Vermont Street, along the Metro Red Line corridor.



(right) Laurene Lopez, RCC public affairs officer, came on board seven months ago. She covers the civic center area of the Metro Red Line's first phase.



(left) Ted Lewis is RCC's engineering manager of communications.



(right) Carlos Rodriguez, an office assistant in RCC's public affairs department, is prepared for action on the construction site.

FAST FOTOS

(left) Be sure to introduce yourself to Ernestina "Tina" Deras, the new mail messenger. She has to know everyone's name and location to do her daily deliveries.



(below) Ghostbusters? No, it's just the recently hired employees in Human Resources, Morris Gardner, senior analyst; June Leivas, administrative assistant; and Ed Sanchez, analyst.



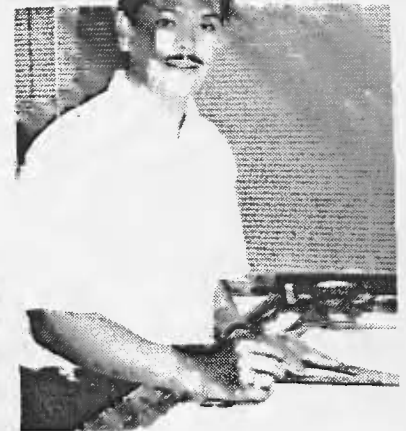
(left) Angela Spaccia is the new accounting manager.

(right) Lorenzo Tyner is an administrative analyst in Accounting.

(far right) Wondra Hunter is an administrative assistant in Les Porter's division.



(left) Deborah Harrell started out in the contracts department six months ago and has now moved over to Internal Audits.



(above) Not such a newcomer to LACTC, is graphic artist Jose Rodriguez. He was a contract employee for a over a year and is now a regular employee.



(above) Wendy Taylor is the new public affairs officer IV in the Communications/Media department. (left) Contract compliance analysts Robert Warren and Maria Perez have been around for several months now, but had not yet posed for the Inside Moves photographer.



LET'S ALL DO IT THE SAME WAY

A new LACTC/RCC Typing Format Manual will soon be hitting your in-box, according to Kathy Torigoe, executive secretary to the commissioners. "We are asking everyone to use this reference guide so that all our documents are done in a standard format," she said. The updated version was put together by the revived Administrative Support Advisory Committee (ASAC) comprised of Kathy, Linda Riemer, Annette Mendoza, Kate Beaudet, Barbara Norris, and Maria White. Call any of the ASAC members if you have a comment or suggestion about the manual or other related issues.



HOW TO BOOK A CONFERENCE ROOM AT THE LOS ANGELES ATHLETIC CLUB

By Annette Mendoza

The Los Angeles Athletic Club (LAAC) is a facility that LACTC utilizes constantly for off-site meetings. Please keep in mind the following policies when using this facility:

1. You must reserve a room by Thursday afternoon for any meeting date the following week.
2. If you must cancel a reservation, it must be within 48 hours prior to function; otherwise, the Athletic Club will still charge the room rental and the cost of the food ordered.
3. The responsible party must get a receipt at the end of the function from an LAAC waiter and submit it to Linda Riemer for processing.

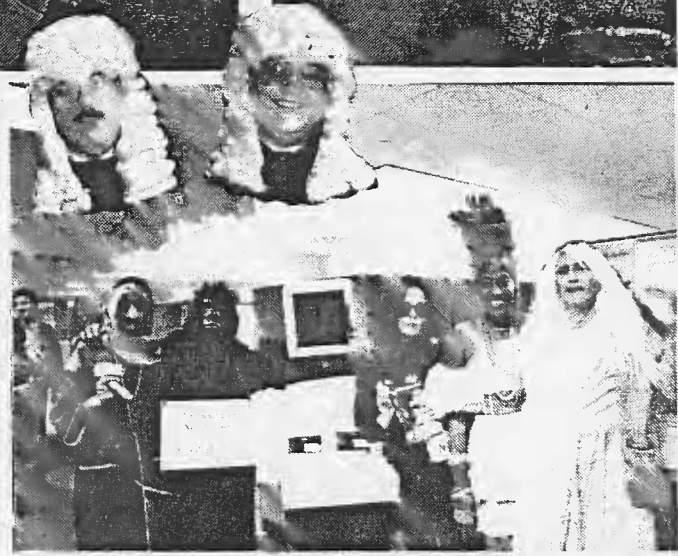
Linda Riemer is the primary contact person to reserve a room at the LAAC. If she is unavailable, you may contact Annette Mendoza or Kathy Torigoe for assistance.

The Inside Moves Staff. . .

Editor **Roberta Tinajero**
 Graphics **Carrie Mahler**
 Photos **Roberta Tinajero**

Guest Columnists are invited; Call Roberta.

Special thanks to our guest writers,
Cindy Kondo, Claudette Moody,
Clara Potes and Julie Austin.



THE WINNERS

Clara Potes, honorable mention, Judy Weiss, Most Creative, Anne Roubideaux, Scariest, Harriette Marshall, Most Attractive, Tom Beezy, Best Overall Costume.

