



MOVES

LACTC/RCC EMPLOYEE NEWSLETTER

FEBRUARY 1991



A MOVIE WITH A MESSAGE . . .

(Left) "Come on. There's nothing to it," says Joe. "Workmen do it all the time." "But we're not workmen," replies the easily-led- astray Becca.

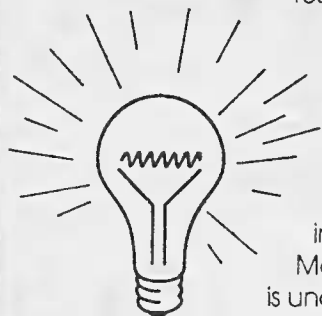
(Below) Shot in five days at the Metro Red Line construction site behind Union Station, the 15-minute film, "Keep Out", will be shown to students at schools adjacent to construction sites. Written and produced by Erica Goebel for Genetha Eddins and Robin McCarthy of the RCC's School Safety Program, "Keep Out" is intended to impress students that there are serious consequences to trespassing on construction sites.

A MESSAGE FROM NEIL PETERSON . . .

1990 was an action packed year. We reorganized our staff, doubled our size, and moved our offices. We inaugurated the Blue Line, survived the subway fire, and celebrated the passage of Propositions 111, 108, 116, and C. Through those propositions, the voters in L.A.

County have asked us to expedite the delivery of transportation projects that help to reduce congestion and air pollution.

We started off 1991 by breaking ground for construction on the Metro Green Line. Our first contract is underway for the foundations and

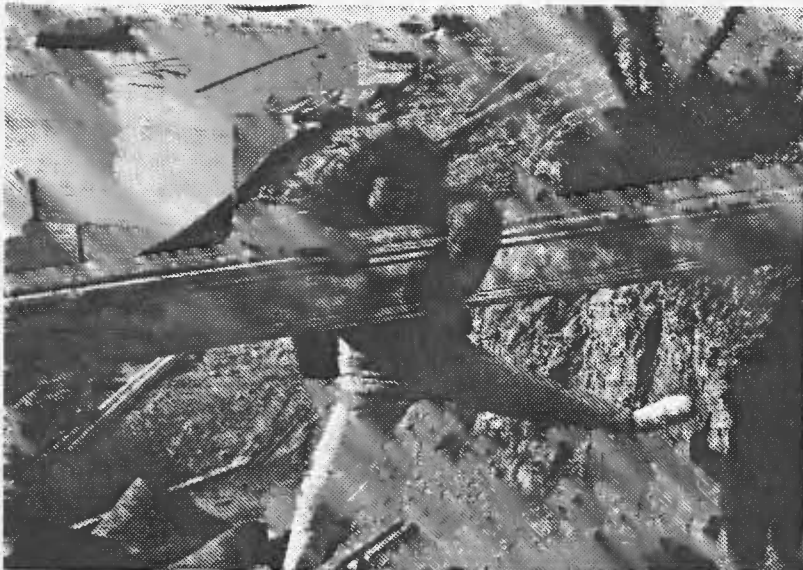


• continued on page 3





Cont...



(Above)
"Keep Out" includes cameo appearances by RCC's Art Gomez, Enrique Valenzuela, and Pete Locatelli, playing workmen who don't appreciate kids on their turf.

(Left)
Becca learns the hard way not to trespass, and in the end, suffers facial scars and a broken arm.

(Below)
Bad timing catches up with C.J., who by this point regrets he didn't just stick to playing basketball.





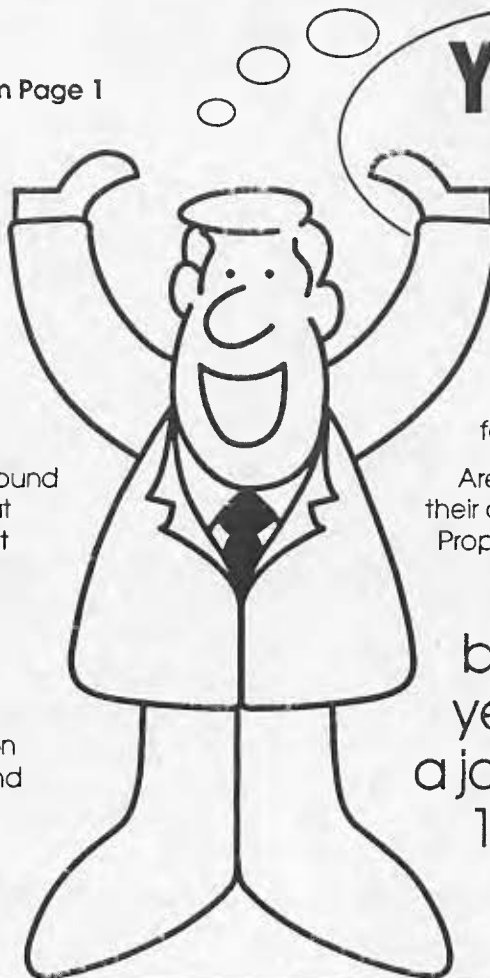
1990 Highlight: Neil Peterson meets with Stan Laurel and Oliver Hardy on the Pico/Flower station platform on Blue Line opening day.

Message From Neil Continued From Page 1

utility relocations along the path of the aerial guideway through El Segundo. Work on the second segment of Metro Rail soon begins after the first contract is awarded for the tunneling work from the Wilshire and Alvarado station to the Wilshire and Vermont station.

Employees who ride the Metro Blue Line can now use the underground station at 7th and Flower streets that opened on February 14. That direct service practically puts you at our office doorstep.

Commuter rail plans are moving ahead. Commuter service is no longer something that's just talked about for the future. Design work on service across the San Fernando and San Gabriel Valleys has begun on routes along Southern Pacific Lines. Any day now negotiations can come to a close with Santa Fe.



**YEAH
TEAM!**

We'll start to put Proposition C money to work by launching a Freeway Tow-Service patrol, one of the gridlock solutions we promised when we asked voters for their support last November.

Area Team members are working with their cities on developing guidelines for Proposition C's Local Return Program.

1991 promises to be another exciting year. Thank you for a job well done in 1990 and keep up the good work.

PERSONAL BEST

STEVE BRYE, project manager in the Central Area Team, made an appearance on national TV's "GOOD MORNING AMERICA." He spoke about the planting efforts of the Tree People. The environmentalist group has added greenery to Martin Luther King Blvd., Skid Row, and the Metro Blue Line corridor in Long Beach. Steve held a sample Grand Sequoia Tree seedling in his hand during his brief interview.

STEVE LANTZ, JOSE MESA, and ROBERTA TINAJERO have each received the Competent Toastmasters certificate. To do so, they completed the 10 speeches in the Toastmasters' manual that call for various presentation skills, such as gestures, voice, word usage, and organization. All three recipients have been putting their skills to work in the real world.

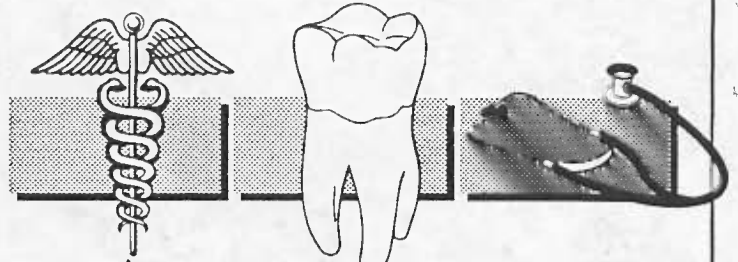
Lantz, Area Team manager, often speaks to community groups, trade associations and city councils as part of his work. Mesa, Human Resources manager, served as master of ceremonies at the staff holiday party and regularly calls general staff meetings to order. Tinajero, a public affairs officer in the Communications Department was a presenter at a UCLA Extension workshop entitled "Networking and Other Public Relations Skills for the Minority Practitioner."

JESSICA CUSICK, manager of the Art for Rail Transit program, has been appointed to the Public Arts Committee of the Cultural Affairs Commission.

DANIEL M. UMAN, RCC lead project control engineer was published in the August issue of Cost Engineering magazine. His article, entitled, "Is a Standard Needed for Estimating Building Design and Construction Costs?," discussed the two processes needed to establish a standard for building a design/construction estimating system.

LES PORTER, deputy executive director of FAST, was the honored guest at a "Welcome to Los Angeles" reception hosted by Iris Rideau & Associates, a partner of the joint venture comprising

continued on page 5...



Looking Out For Your **BENEFIT NEEDS**

It's your first day at work. Not only do you have to deal with the new job jitters, but you must also contend with finding the closest parking lot or bus stop, how to use voice mail, when and where to have lunch, and the most perplexing task of all, which benefit plans to choose.

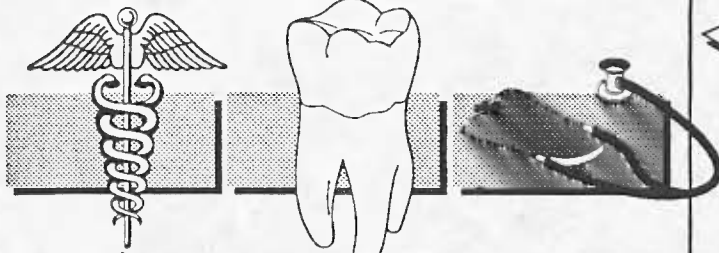
Everyone has had to go through the selection process of reading the various benefit descriptions and deciphering which ones apply. We have numerous choices to make. For example, in health care alone, there are 11 plans to select from. Then there are such additional options as the supplemental life insurance policy.

How well are these fringe benefit plans working for LACTC employees? That's the issue being explored by Foster Higgins Consulting Group, which specializes in employee benefits.

"Our benefits package has never been evaluated," said Ed Sanchez, analyst in Human Resources. "We are going through this evaluation process for two reasons. First we want to know if our benefits are working for our employees, and secondly, do our employees perceive LACTC as a good place to work?"

About 60 employees recently participated in a series of informal and confidential focus groups led by Kathleen Finnerty of Foster Higgins. "Benefits are a personal issue to many people because they effect their pocketbooks," said Finnerty. Participants were

continued on page 5...



Looking Out For Your **BENEFIT NEEDS**

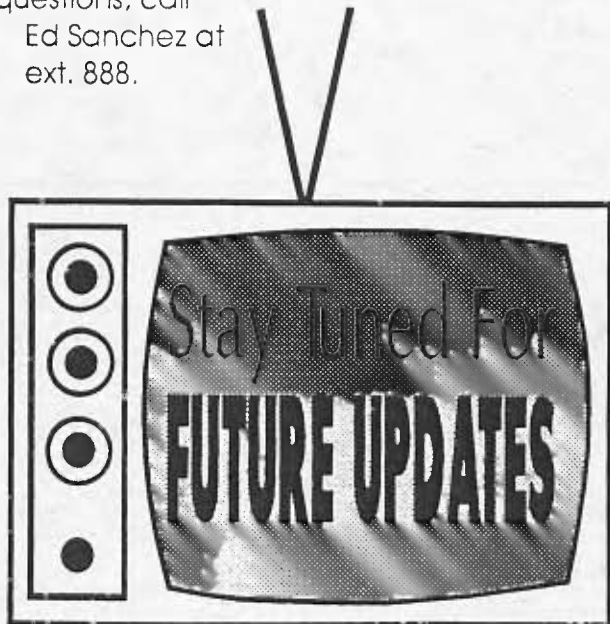
...continued from page 4

able to comment on what aspect of their health plans they like or dislike and what other types of coverage or information they would like to see expand. All employees will soon receive a summary of the focus group findings.

The consultants will then do a feasibility study on various benefit options and their costs, including a flexible plan that allows employees to tailor their own program from a menu of benefits. "It may turn out that a majority of people are happy with their current benefits and a major overhaul won't be necessary," said Sanchez.

The entire evaluation and recommendation process is expected to be completed in late January. Stay tuned for future updates on the benefits review. If you have any questions, call

Ed Sanchez at
ext. 888.



PERSONAL **BEST**

Metro Transit Insurance Administrators (MTIA). Many friends and associates attended the event, including special guests Mayor Tom Bradley, State Senator Diane Watson and Congressman Julian Dixon.

LACTC/RCC has adopted George Washington Carver Junior High School as part of L.A. Unified School District's Adopt-a-School Program. **GENETHA EDDINS**, RCC public affairs officer, serves as our liaison to the school, making presentations, distributing awards and participating in their special events.

The Council of International Non-Theatrical Events (CINE) presented a Golden Eagle award to the film "Mandate: LACTC and the Mission of Mobility" for its "animation, strong visuals, original music, making it a stunning informative piece." The film was produced by **ERICA GOEBEL**.

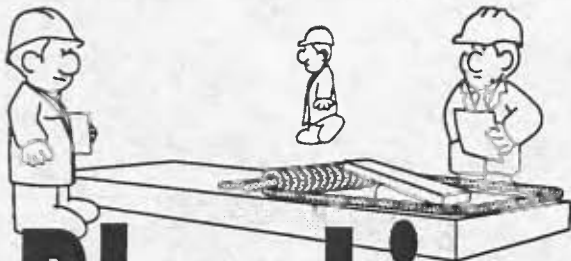
DIANE PERRINE, project manager on the South Bay Team recently completed the masters program in Urban Planning at UCLA.

JIM SOWELL, project manager on the Central Team spoke to architecture students at USC about the status of the county's Metro system in return for possible student interns interested in rail planning.

"Our number one priority for the next decade is to restore confidence and credibility in our ability to solve the transportation problems of Los Angeles." That was the message delivered by **NEIL PETERSON** when he recently addressed the Southern California Harvard University Alumni.

RICHARD STANGER was invited by the city of Espoo to lead a day-long workshop on rail transit planning and development. The city arranged for his visit to nearby Helsinki, Finland.

INSIDE MOVES wants to recognize your excellence and outstanding achievements. Please send your good news to Roberta Tinajero in the communications Dept., 11th floor.



Blue Line Bloopers

1990 already seems like a long time ago. As we have settled into the new year, it is easy to forget our Blue Line opening anticipation, anxiety, excitement and stress. Thousands of hours went into the testing of the trains and systems, staging of the ceremonies, and hosting of the free rides. The opening of the line received international news coverage and was heralded a success by everyone. But behind the scenes, only a few knew about the Blue Line bloopers. . . .

Photographers and cameramen clamored for a spot on the station platform to record the historic moment of Mayor Bradley, the first passenger, stepping aboard the train. But the platform crowd mobbed the train, pushing the

continued on page 16...



HUMAN RESOURCES & ACTIVITIES DEPOT BULLETIN

by Cindy Kondo

April 12, Friday

Dodger Opening Day! Activities Depot will sell tickets.

LACTC/SCAG Winter Blood Drive a Success

Forty-one willing and able LACTC and SCAG people donated blood to the American Red Cross on November 13th. The success of the drive goes to the donors, of course, and the volunteers who worked diligently to promote this event! The next drive is scheduled in May.



HOLIDAY WRAP-UP

by Cindy Kondo

Carolers. . .

Special thanks goes to the LACTC/RCC Carolers and song leaders, Carol Martin and Claudette Moody, for bringing us good tidings of joy for the holiday season. The carolers serenaded us and helped everyone get into the swing of the season!

Party. . .

On Dec. 15th, 275 employees and guests attended the Commission's annual holiday party at the Hyatt Regency. Highlights of the evening included a song medley by LACTC's Christmas Carolers and vocal solo's performed by Manit Churanakoses, Geri Brodie, Gwen Williams and Les Porter. Dinner hour piano music was provided by Philip Martin, Carol Martin's brother. Door prize giveaways and dancing with DJ, Fred McZeal, made it a special evening. Thanks to the coordinators, Jose Mesa, Lynn Bell, Lupe Valdez, Naomi Nightingale-Keyes, Ed Sanchez and Cindy Kondo.

Decorations. . .

Glenda Johnson, contract analyst, Roberta Tinajero, Inside Moves editor, and Lupe Valdez, San Gabriel Valley Area Team public process officer were the winners of the best decorated work station contest. Scores of others received honorable men-

tions from the judges. Deidre Heitman, Doug Robinson and Phyllis Meng had the difficult task of being the decision-makers.

(right) Santa's helpers tossed snow flakes and candy canes at the 7th Street Celebration marking the end of the area's construction and opening the holiday shopping season. Pictured here are Yolanda Rosales, Metro Santa, Laura McNamara, Deana Bland, and Mr. Mime.



It's a bird, it's a plane, it's a . . . mural! Several LACTCers strolled through downtown to appreciate the area's public art pieces. The guided tour was arranged by Jessica Cusick of Art-for-Rail Transit.

Caprice Young reads the inscription of the concrete businessman who lost his head. The sculpture is at Citicorp.





Welcome December **NEWCOMERS**



Bonnie Verdin joined Tom Tanke's team in RCC. She is Technical Operations department secretary.

George Swede, formerly a consultant with LACTC, is now our advanced technology specialist in the Policy Analysis Department.

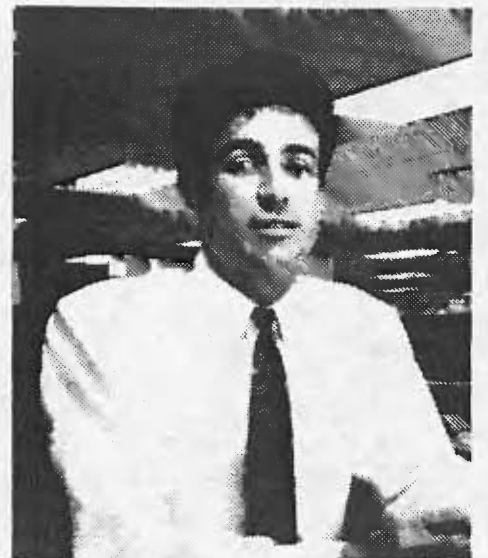


John Mack, manager of Contract Compliance; Belen Rosas, contract administrator; Jeanne Kinsel, contract administrator; Abdoul Sesay, risk manager.

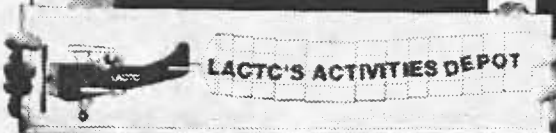


Alfred Thiede
RCC vice president, engineering.

Ron Mathieu is Commuter Rail's
public projects engineer.



Cindy Yasuda, administrative assistant in Human Resources works with Cindy Kondo on employee activities.





December Newcomer, Maya Emsden is a public affairs officer in the Art for Rail Transit Department

Welcome January **NEWCOMERS**



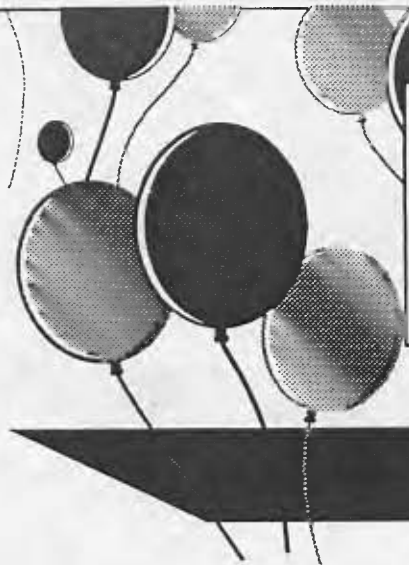
New jobs in the new year were in store for Diana Fautt, accountant; Lynn Lowenstein, RCC's MOS-2 secretary; Benkin Jong, project manager for the San Gabriel Valley area team; Bob Gardner, accountant; Michael Bustamante, Communications Department public affairs officer; Joy Burell, accountant; and Stanley Foreman, accountant.

MORE PEOPLE WERE HIRED BY LACTC IN 1990 THAN EVER BEFORE: MORE FACES



Edgardo G. Carlos joined FAST in the Internal Audit section.

Construction managers Fernando Quesada, Roger Dames, and Albert Nijland work on the Metro Red Line.

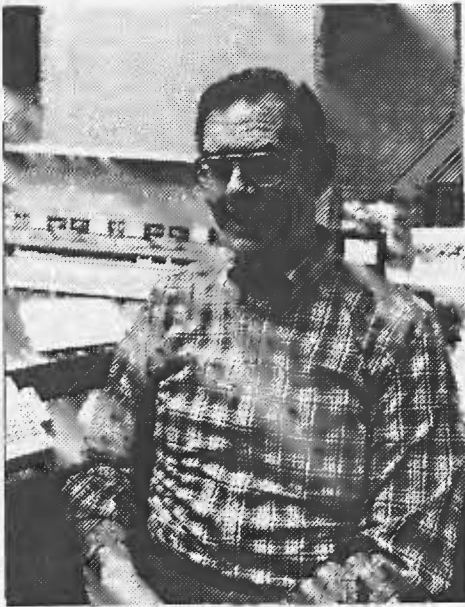


More PEOPLE



Have we missed your face? **INSIDE MOVES** apologizes for the many, many new employees who have not been featured yet in an issue. Our lone photographer would like to catch up with you. Informal snapshots are taken on Friday mornings. If you were hired in the last quarter of 1990 and need your photo taken, please call Roberta at ext. 565.

Monica Gonzales is an RCC public affairs officer. She works on the "Travis" school safety program.



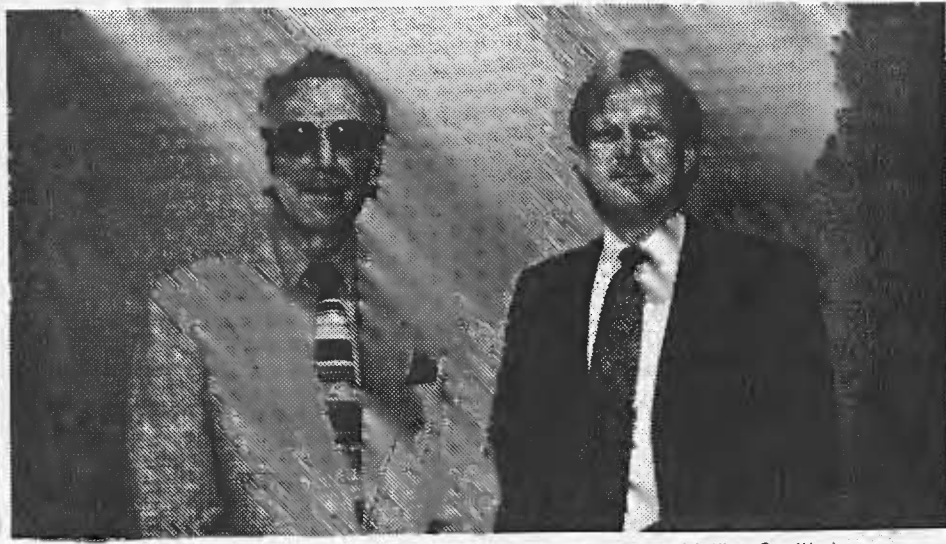
Alan Dale is RCC's director of systems engineering.



Daniel Uman is Program control's supervisor of cost engineer administration.



Marlene Broom is the secretary in the Program Management Services Dept.

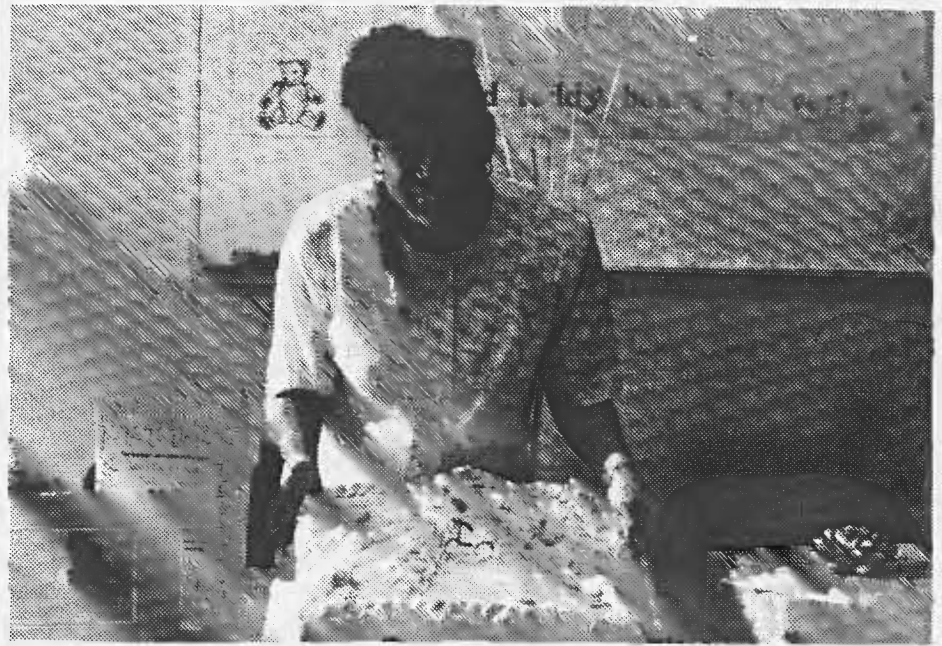


Hal Nelson is RCC's systems engineering manager and Mike Smith is an administrative analyst in Joint Development.

By Deidre Heitman

Are you listless and run-down? Is your cubicle beginning to look like "home?" Does the TV Guide double as your social calendar? For all of you with the winter do-drums and the holiday blues, I have good news for you. The FUN CLUB, a social organization dedicated to, well, having fun, is back and ready to rejuvenate your life.

FUN CLUB members will be involved in planning and participating in on- and off-site extracurricular activities such as horseback riding, BBQ's, holiday parties, noon-hour potlucks, beach parties, camping trips, bike rides and challenging sports events. FUN CLUB members are bursting with ideas to perk up the office ambiance, to have some really good eats, and to get crazy with the people with whom we spend the majority of our waking hours.



Southeast area team members helped Jami Carrington prepare for her first baby by presenting her with a gift certificate to Toys R Us during an afternoon celebration. Her daughter, Ashley Julia, was born December 15.

You can prove just

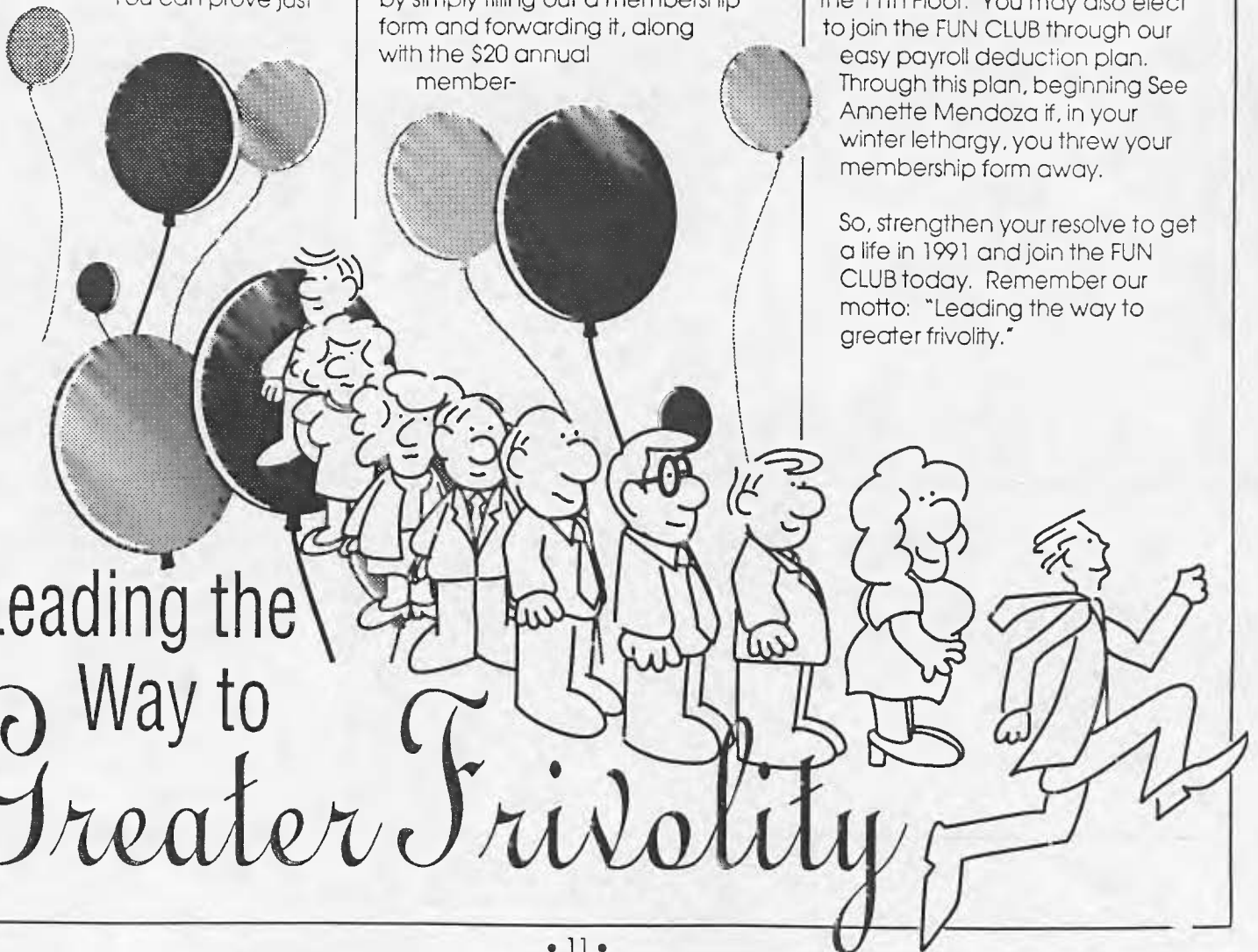
how hip and extraverted you are by simply filling out a membership form and forwarding it, along with the \$20 annual member-

ship fee, to Annette Mendoza on the 11th Floor. You may also elect to join the FUN CLUB through our easy payroll deduction plan. Through this plan, beginning See Annette Mendoza if, in your winter lethargy, you threw your membership form away.

So, strengthen your resolve to get a life in 1991 and join the FUN CLUB today. Remember our motto: "Leading the way to greater frivolity."

Leading the
Way to

Greater Frivolity



WHAT'S AN S-BAT?

Can we take anymore acronyms? Didn't we have way too many even before the South Bay Area Team came along with the the S-BAT abbreviation? They proved that the bat craze lives. Not only did they acronym themselves, they also created a bat logo and a bat sweat-shirt. Who are these people and why are there so many of them? In this issue, *INSIDE MOVES* proudly introduces you to the people behind S-BAT!

Together this group of nine oversees 222 square miles, covering 19 cities and 18 percent of the county's population. They claim eight freeways, 10 bus operators, the county's first rail line, five airports, two harbor ports, two freight service providers, and a growing system of bikeways.

1st photo. Pictured left to right are:
Nelia Custodio, project manager for the Metro Green Line, is working on the North and South Coast



SOUTH BAY AREA TEAM

extensions. The 2.6-mile northern segment from Aviation and Imperial Boulevard is in the design stage and may open simultaneously with the Green Line "trunk" in 1994. The route refinement study was released in May, 1990 on the Southern extension through Redondo Beach, Hawthorne, and Lawndale. The EIR process may begin mid-year.

Highway transit analyst **Vic Kamhi's** biggest projects currently include working on the upgrading of the county's call boxes and informing his cities about the Congestion Management Plan. He was a traffic/transportation administrator in Walnut Creek, CA. Some of his favorites include hot and spicy Chinese food, '60's rock and folk music, and local history.

Tina Marquez, the team's administrative assistant, joined the LACTC in August 1989 as secretary to the Government Relations section. She lives in Alhambra with her two sons, Russell, age 3 and Michael, age 14.

Project manager **Renee Berlin** is the team's liaison with the cities of Long Beach, Signal Hill, Hawaiian Gardens, Carson and Avalon on the island of Catalina. One of her responsibilities include coordinating the Tow Truck Service Patrol, a short-term strategy to relieve congestion created by hundreds of average routine accidents occurring daily on the freeways and other congested corridors.

The man behind the team is manager **Bob Cashin**, who says his current biggest project is keeping SBATs on the road to greater mobility. Where have we heard that before? He confesses that his past jobs included snake charming and working for Caltrans. Is there a connection?. His favorite movies include those starring Tracy Lord (not reviewed by I.M.) and his favorite author is Neil Peterson. Call him an eclectic kinda guy.

Brynn Kernaghan is the team's government relations/public affairs specialist. She started with the Commission in 1987. One of her most interesting prior jobs was as the chief consultant to the California Legislature's Joint Committee on Seismic Safety. She says her most recent big project was surviving the holidays, and working on the Metro Green Line groundbreaking.





His most interesting previous job was as the editor of UCLA's Oral History Program where he was able to learn about L.A. and California history "in a variety of areas through the eyes of many principle actors."

Project manager **Diane Perrine** brings 10 years of highway expertise to the team. Her recent big project was finishing her Masters Degree in Urban Planning at UCLA. One of her papers was on the mating habits of horned toads in Arizona.

Stephanie du Tan, joined the team in September to assist in administrative duties. She assists team members with a wide range of projects.

Donna Barrett is the project manager in charge of paratransit service in South Bay cities, which includes assisting cities in meeting the requirements of the Americans with Disabilities Act. She also reviews Proposition A Local Return projects for fund eligibility. Her past experience includes working on commuter rail plans in Forth Worth and Dallas, Texas.

(2nd photo):

The newest member of the team, **Susan Young**, came aboard in September, 1990 to be the project manager for SAFE (The Service Authority for Freeway Emergencies). The program, more commonly known as the Callbox project, was established to upgrade and expand the system. All 3,500 boxes will be replaced with new technology and 800 new boxes will be added in outer parts of the county. Work begins this spring and continues for about 1-1/2 years. Susan was a project coordinator for Culver City and also worked in the animal control division for Santa Clara County.

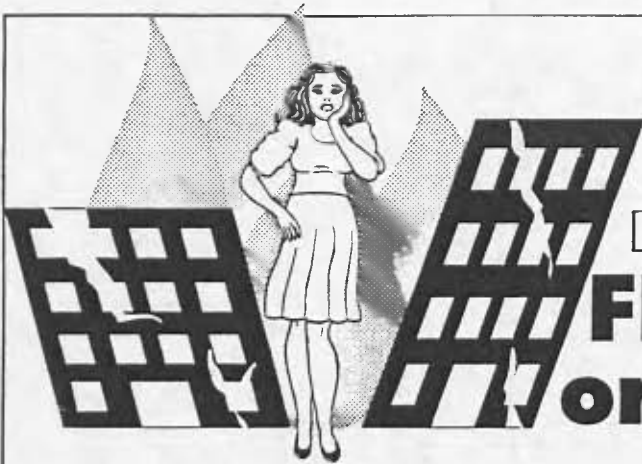
Project manager **Bryce Little's** current task is developing the Urban Greenways project that would enhance parts of our recently acquired Southern Pacific rights-of-way that may not be used for several years. Rows of trees or shrubs would revitalize barren areas along unused corridors. Bryce also works on Transportation Demand Management.



SBAT members rode the Blue Line mock-up car in the city of Long Beach's December parade.



Diane Perrine distributed treats to parade watchers.



DO YOU KNOW WHAT TO DO IN A . . . **FIRE, EARTHQUAKE, or HEART ATTACK?!**

Do you know what to do in case of a fire? Do you know the locations of fire alarms and extinguishers? Do you know the locations of floor emergency cabinets? Do you know who your floor emergency coordinators are? All of these questions and more were answered at the staff emergency training held during the week of January 7, 1991. If you were unable to attend, do not worry, additional classes have

been scheduled for the week of February 25. You'll learn emergency evacuation procedures for this building, as well as how to respond in various dangerous situations. Dates, times, and locations will be forwarded to your emergency floor coordinators a week prior to the training.

LACTC'S EMERGENCY POINT OF CONTACT — 11th floor reception, Geri Brodie and Joyce Hudson.

LACTC'S EMERGENCY COMMAND CENTER — ext. 416

10th floor Administrative Services
Bob Lewis, Phyllis Meng

LACTC's emergency floor coordinators are:

11th floor —
Don Brown,
Vic Kamhi, Anne Roubideaux,
and Caprice Young

10th floor —
Marianna Drost, Denise Keaton-
Smith, Harvey Sautler

9th floor —
Cindy Kondo, Jose Mesa

6th floor —
Marvin Merriweather, Kyrach Miller

5th floor —
Deanna Burton-La Croix, Ilda
Licon, Mary Lou Williams

On-going emergency training will be held bi-monthly for all new employees. For further information, call Phyllis Meng at ext. 535.



Take An Armchair Tour During Lunch

By Steve Brye

Sharad Mistry spoke about his childhood home of Bombay, while Pete DeHaan talked on Hong Kong, Nancy Michali on Boston, Jim Sowell on Rotterdam, and Joe Dale on Kuwait. The five speakers were addressing the City Of The Month Club which meets once a month (or occasionally more frequently) at noon. Watch for flyers posted on Commission bulletin boards approximately two weeks in advance. At each meeting there is a Commission or RCC guest speaker who talks about a city they have visited or lived in. Meetings may include

maps, souvenirs and/or a slide show and always include a lunch featuring the cuisine of the featured city.

Presentations include discussions of transportation and other aspects of the city. Although the Club started as an informal continuing education for urban planners, everyone is encouraged to attend and we would particularly like to have more RCC presenters teaching us about projects they have worked on. We've been very fortunate to have outstanding international coverage so far, but we're equally interested in U.S. cities.

continued on page 16...

MOVIE REVIEWS

by Claudette Moody

The holidays brought us quite a few new films. Due to limited space, some of the movies noted here will just have a grade with a short comment.

Hamlet - B-

In Mr. Gleason's 10th grade Shakespeare class, we spent ten weeks on Hamlet. I know Hamlet. Hamlet was a friend of mine. Mel Gibson is no Well, he ain't bad, but this Hamlet certainly doesn't give the Laurence Olivier version a run for its money. Gibson doesn't bring any subtleties to the role; only anger. It's an energetic interpretation but little else. I still contend that only the English can do Shakespeare justice (re: Alan Bates in the role of the king/uncle). American and Amerstralian actors should stifle any and all temptations to attempt the Bard. Typical of any film by Zefferelli, the cinematography is beautiful.

Cyranno de Bergerac - A-

Unlike Gibson and "Hamlet," Gerard Depardieu is the definitive Cyranno. What a performance. The balcony love scene, when Cyranno assumes Christian's role in the seduction of Roxane, is pure poetry. All the performances in the film are marvelous, but Depardieu brings both energy and sensitivity to this classic tale of unrequited love.

The Godfather, III - B

This film is not a masterpiece, like its predecessors. The story seems somewhat forced, which is understandable given the fact that Coppola was forced to do the film because of financial difficulties. Al Pacino is fine, but he has given better performances. Andy Garcia continues to improve as an actor, but as Sonny Corleone's illegitimate son, he doesn't have much more to do than rage. The last 40 minutes of this

overly long film are the best, so try to get comfortable. Godfather III is almost three hours long.

Dances with Wolves - B -

This is not a great Western, but it is entertaining and true to the Western movie form. Costner does a good job of showing how the vast prairie lands of the West could be intoxicating to Easterners used to dirty, crowded cities. But, the Indians are still portrayed as two dimensional people; just more positive cardboard figures than in some of the old-time Western movies. It looks real pretty, though.

Edward Scissorhands - B+

This movie is an inventive fable of love and deformity in a very pastel suburbia. Being an inspiring psuedo-intellectual film critic (you know, the kind Woody Allen hates), I immediately saw Edward as a Christ figure, changing the world more strikingly after his "death" than during his "life." But, when I stopped playing Siskelette, I realized it's just the story of an alienated teenager in love with the wrong

girl. Scissorhands shares this off-told story in a quirky, funny and moving way. It's worth your time, but I don't think it's for children under ten.

Awakenings - B-

Robert De Niro is good (he always is) and Robin Williams is very controlled here, but I still think this movie could have been a little less melodramatic. The story, of people awakening after years of living in a semi-comatose manner,

is incredible. But, the second story line of how their

temporary awareness also "awakens" the shy research doctor played by Williams is somewhat contrived and almost reduces the movie to "television movie of the week" status. De Niro's performance saves the day by making even the corniest of lines ring true.

Alice - B (story) A- (direction)

This is a funny movie, and Mia Farrow gives a charming performance. Allen's direction is inventive and smooth. Scorsese's going to have a race for the Oscar this year. Nevertheless, the story (will nice rich lady mess around on her fakey rich husband) is kind of stagey and, boy, does he hit you over the head with the moral of it all. The cameos are great, and the moral is correct, so just sit back and enjoy the movie.

Mermaids - C-

Teenage angst and Cher in tight clothes.

Home Alone - B+

Really entertaining, and kids love it.

The Russia House - C

Disappointing.

Green Card - B-

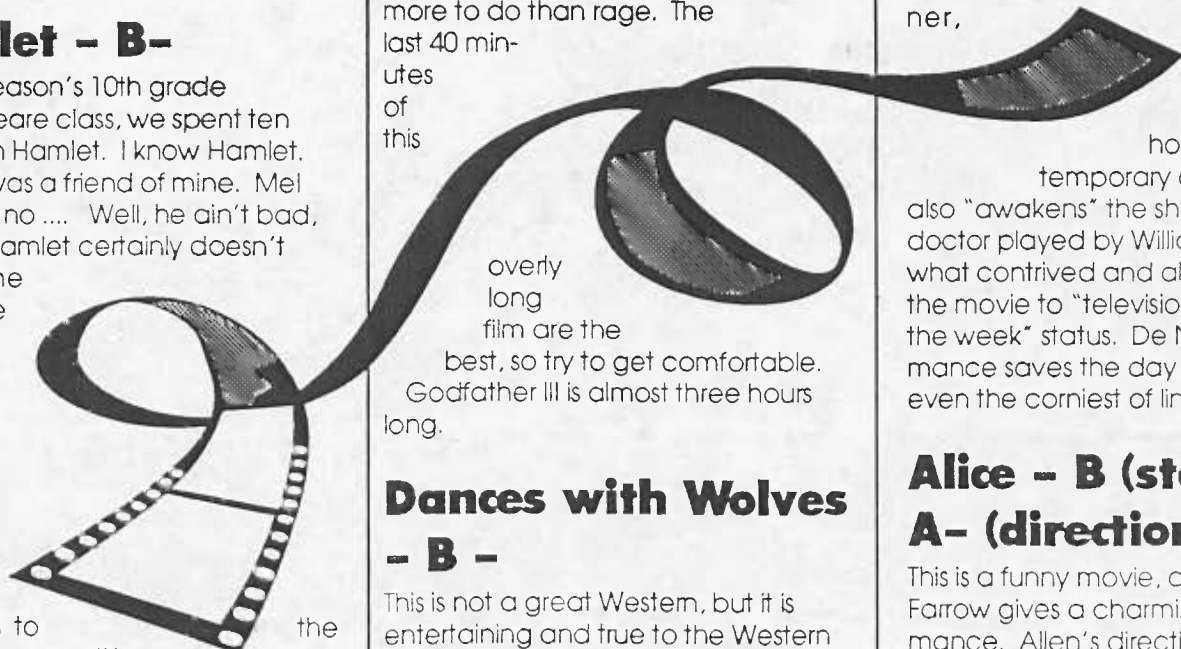
Depardieu learns English. See Cyranno.

Havana - B

Better than you think. I like Redford.

Look Who's Talking, Too - D

Bad script, bad acting, not for kids.





LACTC EMPLOYEE AWARDS BEGIN IN JANUARY

Commission employees will soon have an opportunity to participate in an awards program which will recognize employees for their outstanding contributions.

The awards, to be given monthly at the general staff meetings, will be broken down into three categories: 1) "Bright Idea Award: to be given to the individual for improved efficiency in and around the office; 2) "Medal of Valor Award" for going above and beyond the call of duty; and 3) "Spirit Award: for being friendly, having a jovial manner, always smiling and setting a positive example for us all.

The winner of each category will receive a Metro logo watch and will have a chance to win lunch for two at the 7th Street Bistro. so watch for the official entry forms which should be distributed soon to nominate those special people. The program will be kicked off at the January meeting and will officially begin at the March staff meeting. Good Luck!

continued from page 6...

mayor into the car. He had to be escorted off to reenact his famous first step aboard.

The printed invitation to the grand opening ceremony asked all guests to RSVP to Isabel. There is no LACTC employee named Isabel. (It's a common practice to use an unusual code name for big events, so that anyone answering the phone will automatically know what the caller is responding to.)

The inaugural train was to stop along the corridor for two five minute ceremonies. However, people had been waiting at the stations since early morning in the July sun for a glimpse of the first train filled with dignitaries. The five minute stop overs turned into 30 minutes of speeches.

The week before, Norm Jester was giving a local TV station a tour of the Central Control building when word came in that a test train had derailed in south Long Beach. The crew followed Norm to the site and covered the mishap. Meanwhile, a national TV crew was in the train behind the derailed car and never knew what had happened.

An employee waited in the long line with her family for a free ride from a mid-corridor station. They got all the way to Long Beach only to find that they could not get back on the train for a return trip. The free bus service gave them an express trip to downtown Los Angeles, nowhere near their mid-corridor starting point.

When dignitaries reached their destination at Willow Station, they were escorted to an outdoor luncheon. The huge group had to troop behind a brigade of horses ridden by Sheriffs. It was a "watch your step" stroll to lunch.

...continued from page 14

Robert Hill will present the city of Atlanta and Herman Cheng talk about will Tokyo in the new year. So come join us either as a presenter or just to share in the armchair tour and good food. There is no fee to join and lunches are covered by a pre-announced donation which has been in the \$3 to 6 range. The Club also purchases a map for each city studied and these are available to staff for work or leisure review. For further information or to volunteer to present, call Steve Brye at X-731.

THE INSIDE MOVES STAFF . . .

EditorRoberta Tinajero
GraphicsCarrie Mahler
PhotosErica Goebel, Roberta Tinajero

Special thanks to our contributors:

Steve Brye, Michael Bustamante, Deidre Heitman, Phyllis Meng, Claudette Moody, and Wendy Taylor.