

SOUTHERN CALIFORNIA RAPID TRANSIT DISTRICT

District Driver Has Many Faces On And Off Stage

The shimmering of the footlights, back-stage shouts of "curtain time" and the grandiose roar of laughter and applause is all real in the life of RTD operator, John Kosman. It's a part of his beloved spare time hobby of impersonations.

A 12-year veteran at the District, now working out of Division 2, John has always been known by his friends and family as being a little droll at times, and somewhat of a clown.

He was bitten by the acting bug in 1964 after appearing with the Anderson Highland Bagpipe Band in the Twentieth-Century Fox production of "Hello Dolly." It was not until 1969 that John began his on-stage performances when he played the role of a bartender in the hilarious play "The Drunkard" put on by the Downey Theatre Guild.

Since that time he has performed in such stage plays as "The Odd Couple," "Don't Drink the Water" and "The Ladies of the Jury" with leading roles in the Bellflower Theater Arts Association production of "The Man Who Came to Dinner" and "Seven Nuns in Las Vegas."

Adjusting to a variety of roles such as a poker playing slob, half-drunk bartender or an outlandishly funny Russian Secret Agent is easy for John.

"I enjoy playing the part of a different character each time," he said, "It's just more fun that way."

In the play "The Ladies of the Jury" John aged himself 40-years to portray the part of a feeble bailiff.

"The part really called for a man around 40-years-old," he noted, "but a 40-year-old

Continued on Page 2



DOORSTEP SERVICE — RTD buses now travel a modified Line 60F route to provide doorstep service to the Country Village residential project near Riverside. Celebrating the new service are (from left) Leonard Gleckman of the District's Board of Directors; Linda Brown, representing Ontario International Airport which the line directly serves; and Riverside Supervisors Paul Anderson and Clayton Record, Jr.

RTD's Steam Powered Bus To Make First Local Appearance August 30

The District will unveil its new steam powered bus at a special news conference August 30 at Division 2.

Jack R. Gilstrap, RTD's general manager, will host the conference. Assemblyman Frank Lanterman will represent the State at the news conference.

Local operation of the steam bus will commence September 4 on several local lines

and public display of the District's new bus will take place at the Los Angeles County Fair at Pomona.

The steam bus project is a joint effort of the Urban Mass Transportation Administration, California State Assembly and RTD. The steam power plant was built by Steam Power Systems of San Diego.

UCLA Director Finds RTD Solves Mobility Problem

While thousands of weary motorists drive bumper-to-bumper on Los Angeles' freeways and streets during peak commuter hours, others are discovering the easier more comfortable, more economical way of taking the RTD ExtraCar.

Take the not unusual case of 35 year-old UCLA Financial Aids Director Don Brusha who sold his sporty 1969 Camero convertible to ride the ExtraCar on a permanent basis.

Don sold his Camero three months ago after over a year

Continued on Page 2

RTD Extending Service; Board Approves Changes For Lines 60 and 36

Direct bus service to the Country Village residential facility in the Mira Loma area was initiated Sunday (August 6) by action of RTD's Board of Directors.

Riverside County Supervisor Paul Anderson, RTD Director Leonard Gleckman,

Senior Citizen Fares On All RTD Buses Now 10c

Senior citizens traveling on Southern California Rapid Transit District bus lines formerly operated by the Eastern Cities and Blue & White transit firms are now able to ride for a new, low fare of 10 cents.

RTD Vice President Thomas G. Neusom said the reduced transit rate for the elderly will be available from 9 a.m. to 3 p.m. and from 7 p.m. to midnight on weekdays and all day on Saturdays, Sundays and holidays. Senior citizen passes are now acceptable on the lines.

Lines on which the 10-cent fare has become effective include the Compton (Via Avalon Boulevard) Line 303, Compton (Via Central Avenue) Line 304, Huntington Park Line 305, Manchester & Central Avenue (to Imperial Highway) Line 306 and Compton Avenue Line 308, all former Blue & White routes.

Former Eastern Cities bus lines on which the 10 cent rate

Continued on Page 2

and a representative of U.S. Senator John Tunney's office participated in a ceremony at Country Village Auditorium on Friday (August 4) inaugurating the new service.

The Line 60F route modification was made possible by the recent extension of Bain Street — formerly a dead end thoroughfare — into Mulberry Avenue. Riverside County Supervisors, local residents, and the District cooperated in planning the re-routing.

Riverside-bound buses now proceed from the San Bernardino Freeway onto Etiwanda Avenue, east on Slover Avenue, and south on Bain Street-Mulberry Avenue, making two convenient stops for Country Village residents at Country Club Drive and at D Street. Buses then proceed eastward on Mission Boulevard to Riverside.

Traveling west toward Los Angeles on the reverse route, direct and prompt service is provided to the growing Ontario Airport.

In the near future, service to Los Angeles will even be faster with the opening of the El Monte express busway. Line 60 buses will merge directly into the exclusive busway lane, providing 18 minute service between El Monte and downtown Los Angeles.

Senior citizens of Country Village are taking advantage of a new ten cent basic fare. They need only show the driver a senior citizens iden-

Continued on Page 2



DON ENLISTS IN THE MONEY-SAVING EXTRACAR CLUB — UCLA Financial Aids Director Don Brusha purposely sold his Camaro convertible to ride the more economical RTD ExtraCar. Don is doing his part in fighting air pollution and enjoying extra spending money each month.



EFFORTS FOR SENIORS—Councilman Gilbert W. Lindsay (left) and Thomas G. Neusom, vice president of the Southern California Rapid Transit District, share pleasure over RTD's recent reduction in senior citizens' fares to 10 cents. Lindsay's long career is distinguished by his efforts in behalf of seniors.

Extending Service

Continued from Page 1

tification card or a Medicare Card.

The old section of the route along Etiwanda Avenue south of Slover Avenue and along Mission Boulevard between Bain Street and Etiwanda Avenue has been discontinued.

A recent analysis conducted by the District showed that only a few passengers were traveling on this portion of the route.

Lines 36

On July 22 Line 36 was extended to Navy Landing in Long Beach to accommodate users of the new deluxe 149-passenger and 500-passenger boats to Catalina Island.

This service is operating from new facilities located at the Magnolia/Navy Landing complex in Long Beach. The route extension will operate as

follows: from the present terminal at Ocean Blvd. and Magnolia Ave. via Ocean Blvd., left on Queens Way, right on first exit (reading Armed Services "Y," Boat Ramp) and Navy Landing Service Road to a new layover zone located on the service road adjacent to the Catalina Cruise Ticket Office.

Return service is via Navy Landing Service Road, right on Golden Shore right on Ocean Blvd., and then resuming its regular route.

All trips from open to close of service daily, Saturday and Sunday have been scheduled to operate via the extended route. There will be no layover scheduled at the Navy Landing after 7:00 p.m. daily, Saturday or Sunday. All trips scheduled to operate through the extension after 7:00 p.m. will return to Ocean Blvd. and Pine Ave. for layover at the District's Long Beach Station.

UCLA Director

Continued from Page 1

of debating the question: "to drive or not to drive."

A little ambivalent at first, he locked up his car in his garage, pretending he didn't even own one. After he found that he could get to where he wanted to go with fewer problems and as quickly as he could when driving himself, Don took the ultimate step of selling his car.

Living within two miles of UCLA, he finds no problem in getting to work. But going to and from his job is not the only instance in which Don takes the bus.

Being an eligible bachelor in the prime of life, he makes it a practice to leave the driving to RTD while dating.

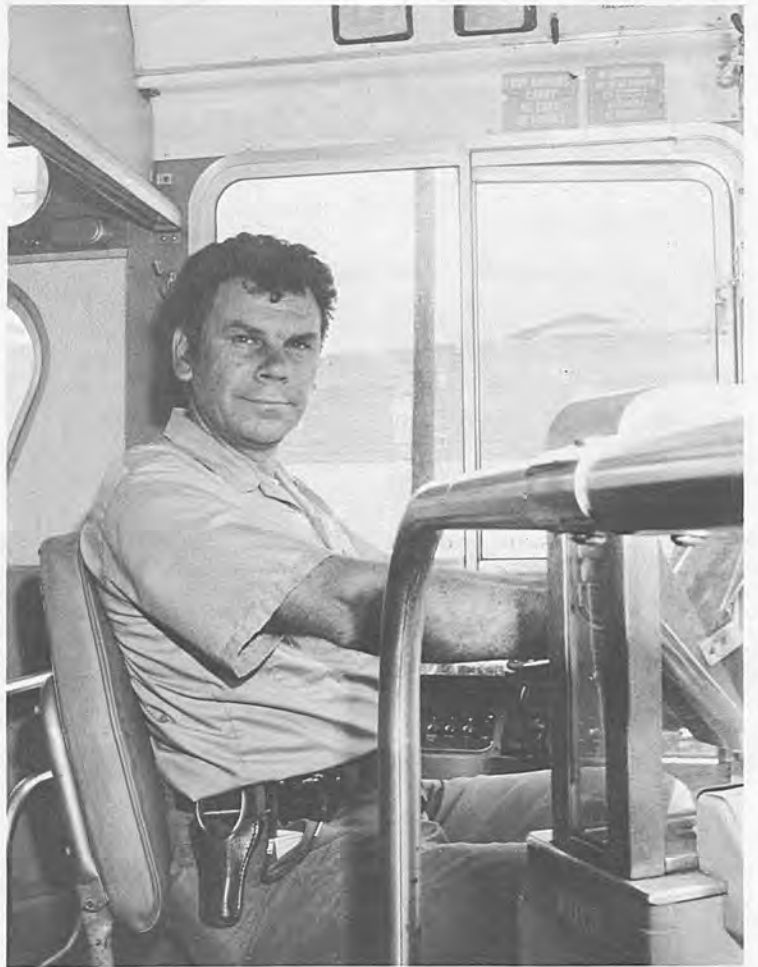
"When I ask a young lady out," said Don, "I always tell her that the RTD bus will be the way we'll go. Initially, I may get a little static, but they always agree that maybe the ExtraCar has lots of advantages that it would pay to explore further."

Ecology plays its active part in Don's decision to "bus it."

Don on ecology: "I do have a concern about many aspects of our environment," he said. "And that concern has to start someplace. Ultimately if there are enough people taking the bus instead of driving themselves, it will reach a point that will make a significant difference."

Don admits he has lost some of the git-up-and-go freedom that he otherwise would have with his erstwhile auto, but feels that his freedom would be regained if he could depend on getting a bus at any time.

Well, we're working on that, Don!



"ALL THE WORLD'S A STAGE" — Bus driver-actor John Kosman of La Mirada is a man of many roles. During his off-the-job hours, he performs as a character actor on many local stages, including Long Beach, Downey, and La Mirada Community Playhouses. By day he plies the Wilshire Boulevard Line 83 route of the Southern California Rapid Transit District.

Kosman

Continued from Page 1

bailiff isn't funny, an 80-year old bailiff is ridiculous."

John's mother was the first person to recognize his acting potential and tried to persuade him to take acting and dancing lessons.

"I was a tough kid from New York City," John explained, "and tough kids don't take dancing lessons."

For a number of years John has driven Wilshire Line 83. Along with the everyday courtesies and considerations he has for his passengers, John tries to put a little humor into his work from time-to-time. John says it makes people smile and helps them (and John) keep their sense of humor.

Through the years John has gained many friends with his humorous antics, but his biggest fans are his lovely wife and six children. They never miss a performance, whether at home or on stage. They're what's known in show biz as a "captive" audience.

Senior Citizens

Continued from Page 1

applies include the Kern Avenue Line 140, the Ford Boulevard Line 141 and the City Terrace Line 142.

To be eligible for the fare, the passenger must show a senior citizens identification card available from the Los Angeles County Department of Senior Citizens Affairs, 601 South Kingsley Drive, Los Angeles, as well as many local senior citizens clubs and centers.

Proof of age (such as a driver's license or birth certificate) must be supplied to qualify for the identification card. The age qualification is 65 for men and 62 for women. Applicants must provide a self-addressed stamped envelope.

Additional information may be obtained from the county at (213) 385-4221.

Give Blood

July Operator of the Month



COURTESY TO PASSENGERS — Gerald Fortier of Los Angeles (right) receives July "Operator of the Month" honors from RTD Director Jay Price. In his five years of service, Fortier has gained a reputation for safe and courteous driving. He earned his award of the strength of letters submitted to the District by pleased patrons, as well as his excellent safety record. Fortier is well known to passengers on the Western Avenue Line 84.

**RTD STEAM
BUS TO BE
DISPLAYED AT
L.A. COUNTY
FAIR SEPT. 15
THRU OCT. 1**

Busway Construction

Work on the busway lanes from Long Beach Freeway to the Gibson Overhead has passed the halfway mark.

"The most obvious advancement," noted Richard Gallagher, RTD's chief engineer, "is the construction of the walls and the paving along some sections of the busway." (See photo at right)

"With work thus up out of the ground," Gallagher noted, "the general features of this portion of the project become visually apparent."

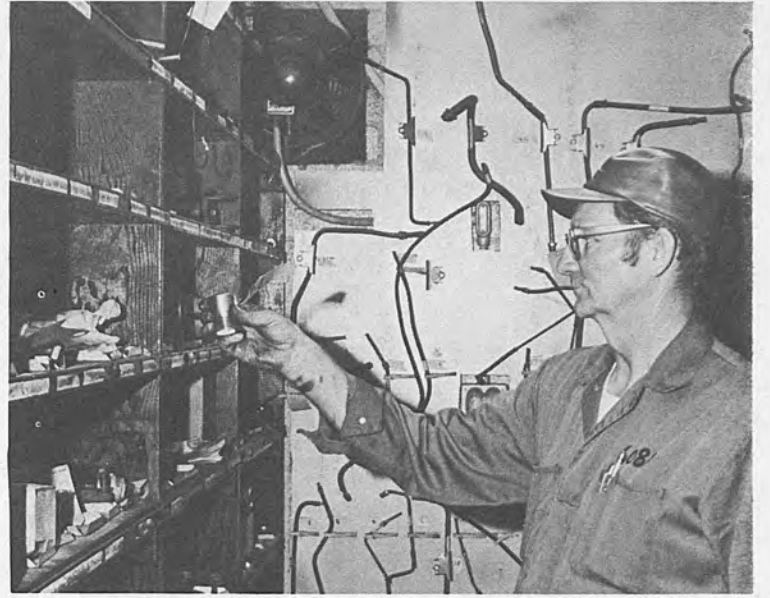
The District's architectural consultants have started the preliminary design of the two other busway stations (USC Medical Center and L.A. State College) with finalization expected before the end of 1972. It is estimated that bids for these stations will be called for in the spring of 1973.

Gallagher concluded that, "the District is now studying alternate layouts for the new bus maintenance facility at El Monte. This new facility must be constructed and in operation before we can proceed with the construction of the balance of the fringe parking which will occupy the site of the District's existing bus maintenance facility."





Overall view of Division 8 from Sherman Way entrance.



Herb Fassbender, mechanic "A", selects a new air tank drain valve from Division 8's well stocked store room.



George C. Michaels, manager of Division 8, is responsible for the operational control of Division 8's 139 buses and 205 operators.

DIVISION 8

Nestled in the Van Nuys portion of the San Fernando Valley, Division 8 is the mainstay of the District's operation in northern Los Angeles County.

Located at 14557 Sherman Way, the transportation division is under the operational control of George Michaels. As Division Manager Michaels is in charge of 205 operators, 8 office personnel and the operational control of 139 buses.

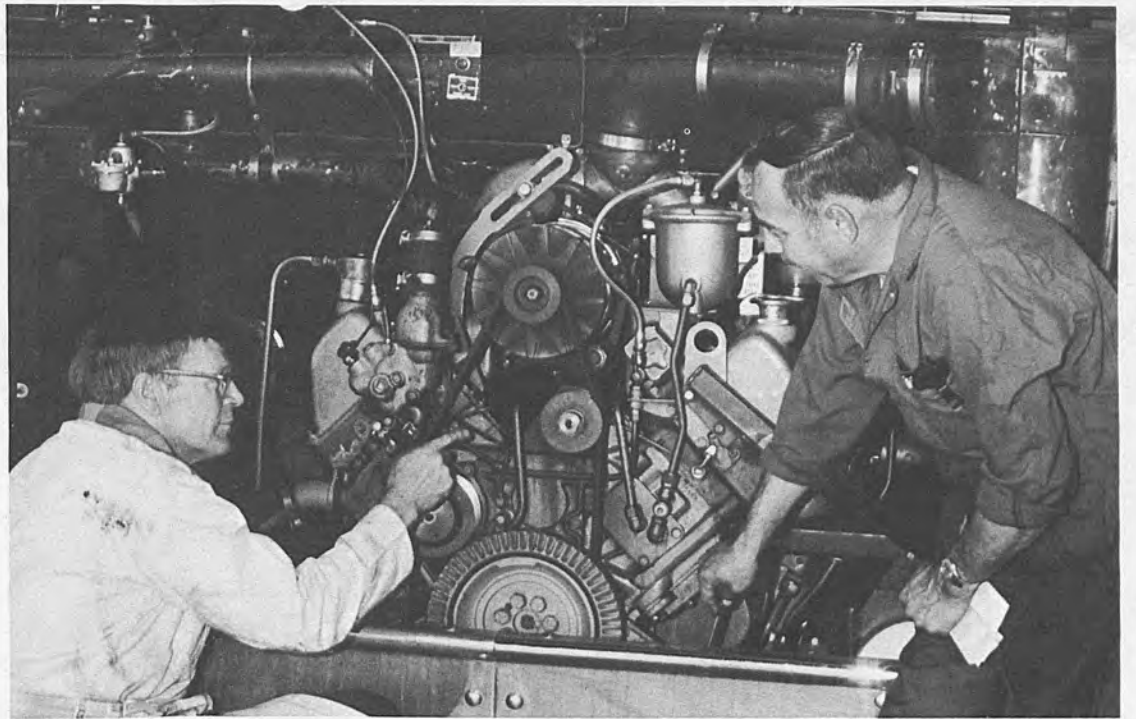
Tom Tegtmeier, equipment superintendent 1, is in charge of the care and maintenance of those buses. He has 42 men working for him.



Three of Division 8's 139 buses undergo preventative maintenance.



Division Clerks Harry Forrest (left) and Jack Storey (right) go over the days operating schedule.



Tom Tegtmeier, (left) equipment superintendent 1, in charge of Division 8's maintenance department, checks alternator mount with leadman Art Morentin, (right) mechanic "A".



Division Stenographer Elena Neill works on division's monthly report.



Instructor Harold Reinink (left) goes over new bus route in Saugus-Newhall-Valencia with Operator John Harrigan (right).



Bodyman Pedro Jiminez, mechanic "A", replaces left front panel of bus 7113.

