



HEADWAY



Southern California Rapid Transit District

Volume 1 Number 5 March 5, 1974



Operator Ted Kea

Shake-up heads for 'final gun'

RTD's annual System Shake-up, which often takes on the tension and excitement of a pro football player draft, will be completed Friday in the train room of Division 3-10. But instead of team owners selecting the best available player to fill an assignment, RTD "players" select the best available assignment for themselves during their turn to bid.

While there is a great deal of organization in the apparently disorganized proceedings, there are many other, more subtle comparisons to be made between the Shake-up and football which contribute to the color of the 17-day event.

Hand signals

For example, an elaborate series of hand signals has been formulated to allow two-way communication between the "coach" calling the plays over the P.A. system from the sidelines, and the players and Division "quarterbacks" who huddle together to see which assignment the player wants to take.

Have you ever seen a great runner break several tackles, regain his balance and finally lunge into the end zone? You could at the Shake-up.

While quietly waiting for their turn, several operators were startled when their name was finally called, and bolted through their fellow drivers to place their bid with the Division Manager.

Down-and-out

Many other operators, like wide receivers on a football team cleverly ran away from the crowd. Instead of running their usual "streak" pattern down the sideline, they suddenly ran a "down-and-out" to another Division. Take Joe LaFond for example: This wily, 29-year veteran of the RTD and three of its predecessor "leagues," faked toward Long Beach and Division 12, and cut over to Division 9 and El Monte. "My wife and I planning on moving to Whittier, so I think I'll work out of Division 9," he said, obviously pleased with the new assignment. LaFond moves

from Line 36 to Line 60 on the Busway.

Among the other RTD veterans, the top 11 men in seniority make up the District's first string —

1. Merwin Park, Div. 9, 9/27/33
2. Marvin Debrunner, Div. 4, 10/09/33
3. Walter Litzinger, Div. 10, 12/01/33
4. Leonard Morris, Div. 2, 7/31/34
5. Arthur Anderson, Div. 9, 11/01/34
6. Peter Brezniah, Div. 9, 11/06/34
7. Fred Happel, Div. 2, 11/30/34
8. Kenneth Strobel, Div. 9, 5/29/35
9. Nicholas Bayerle, Div. 8, 6/14/35
10. Howard Deane, Div. 10, 6/24/35
11. Edwin Bowles, Div. 10, 10/11/35

Rookie of year

Of course, the competition among the low-seniority members of the team has been the most intense. But one rookie will stand out Friday as he takes the last assignment left on the board. To him, we present the Rookie of the Year Award: Stephen Densford, Division 3, Good Luck!

Employee meetings set

Upon the completion of the System Shake-up, senior staff members will meet personally with employees in a series of visits to District divisions and facilities. "The purpose of the meetings is to acquaint employees with some of RTD's future plans and to open a personal medium of communication between management and employees," said General Manager Jack Gilstrap. "The format

for the meetings will be strictly informal, and everyone is encouraged to bring their ideas or questions to this wide-open forum."

The meetings will be held during the mid-day break periods, and before and after the P.M. shift change so that all employees will have an opportunity to talk with members of the management team. Divisions will receive bulle-

tins indicating the date and time of the visits.

The first meetings are scheduled for Division 9's train room March 8. Two sessions are planned for 1:30-2:45 p.m. and 3-4 p.m. to facilitate attendance by all interested employees. All Division 9 employees whose schedules permit their attendance are invited to participate.

¿ Habla Ud. Espanol? UCLA classes can help

Countless District operators face this situation at least 10 times a day: An obviously confused passenger boards your coach to take the first bus ride of his life. As he fumbles with his change you ask his destination. He looks up with a puzzled wince and says, "¿Cuanto cuesta llegar a Main Street?"

Solution offered

The District recommends a helpful solution for its non-Spanish-speaking employees who have to deal with just such language problems in the performance of their job. "Conversational Spanish for Public Service Employees" will be offered at both a beginning and an intermediate level at the UCLA Downtown Center, and the District will

pick up the tab for tuition and books for employees who register. The class will be taught by Alfonso Osuna of UCLA's department of arts and humanities at the Downtown Center at 1100 S. Grand Ave.

The Spring Quarter begins March 26 for the intermediate class, and March 27 for beginners, and continues each week from 7 to 10 p.m. for 12 sessions. The classes are fully accredited UCLA courses, and are offered on a pass/fail basis. Students will receive four quarter units credit, the equivalent of 2-2/3 semester units.

Sign up soon

District employees are asked to reserve a seat as soon as possible by calling the Personnel Department by March 8.



Conservation program

District-wide figures totaled

By any measurement, RTD has already met with great success in its internal energy conservation efforts. Here are the first District-wide electrical figures covering divisions and locations served by both the Los Angeles Department of Water and Power and the Southern California

Edison Company. (Division 13 is served by Riverside which buys its power from Edison.)

According to Jack Walsh, program coordinator, RTD is setting the pace for the rest of the Southern California industry, and everyone is to be congratulated.

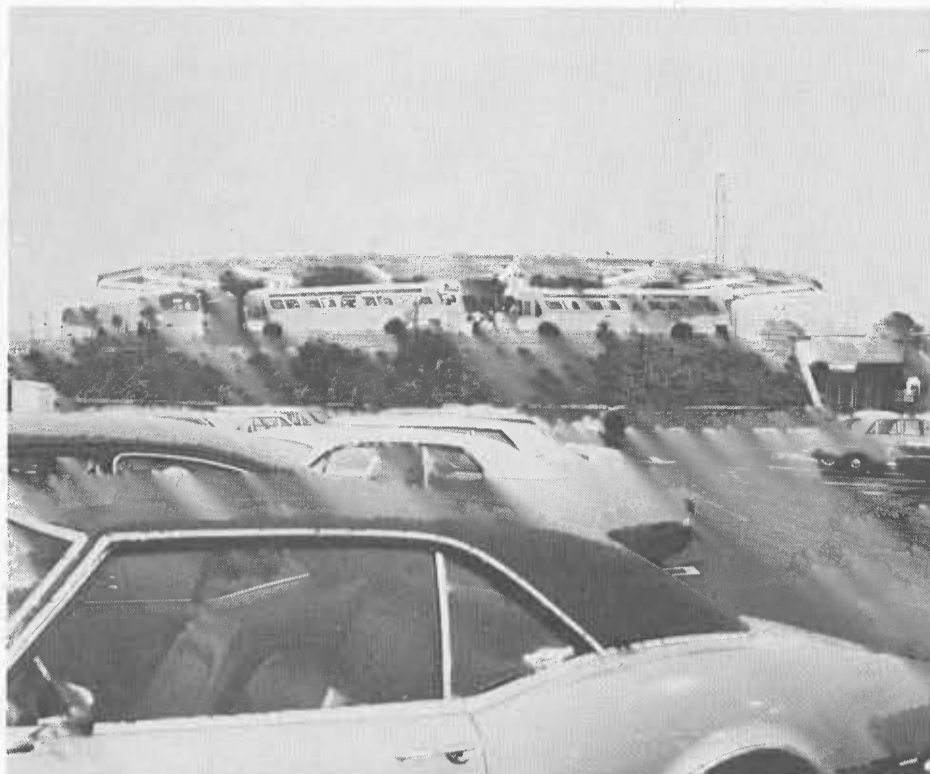
LOCATIONS ORDERED TO CUT BACK 10% BY DEPARTMENT OF WATER & POWER

Div.	Days Monitored	Base 1973	Consumpt. 1974	% of Reduct.
1, 11	20	46,250	36,400	21.3
2	29	102,400	78,000	23.8
3, 10	29	66,465	53,685	19.2
4, 5	31	87,600	66,400	24.2
6	20	18,760	10,310	45.0
8	29	23,240	19,960	14.1
14	13	41,600	30,400	26.9
31	29	118,600	77,560	34.6
Macy St.	29	39,120	25,300	35.3
		544,035	398,015	26.8

LOCATIONS URGED TO CUT BACK 15% BY SOUTHERN CALIFORNIA EDISON CO.

Div.	Days	Base 1973	Consumpt. 1974	1/2 of Reduct.
7	19	21,945	16,480	24.9
9	32	38,400	32,576	15.2
12	29	44,320	35,993	18.8
13	28	12,960	11,536	11.0
		117,625	96,585	17.9

% of Reduction including Macy St. — DWP 26.8
 % of Reduction — Edison 17.9
 % of Reduction — RTD System Wide 25.2



THE STRIKING YET FUNCTIONAL design of RTD's El Monte Station, which has helped improve the image of commuter bus service throughout the nation, has received the National First Honor Award of the National Society of Registered Architects for 1973. The \$1 million complex, completed in July 1973, serves as the terminus for the El Monte-Los Angeles Express Busway. It's inviting appearance has induced increased ridership on the Busway, and has helped bring the number of week-day riders to approximately 7000 daily.

Design for El Monte station wins major architecture award

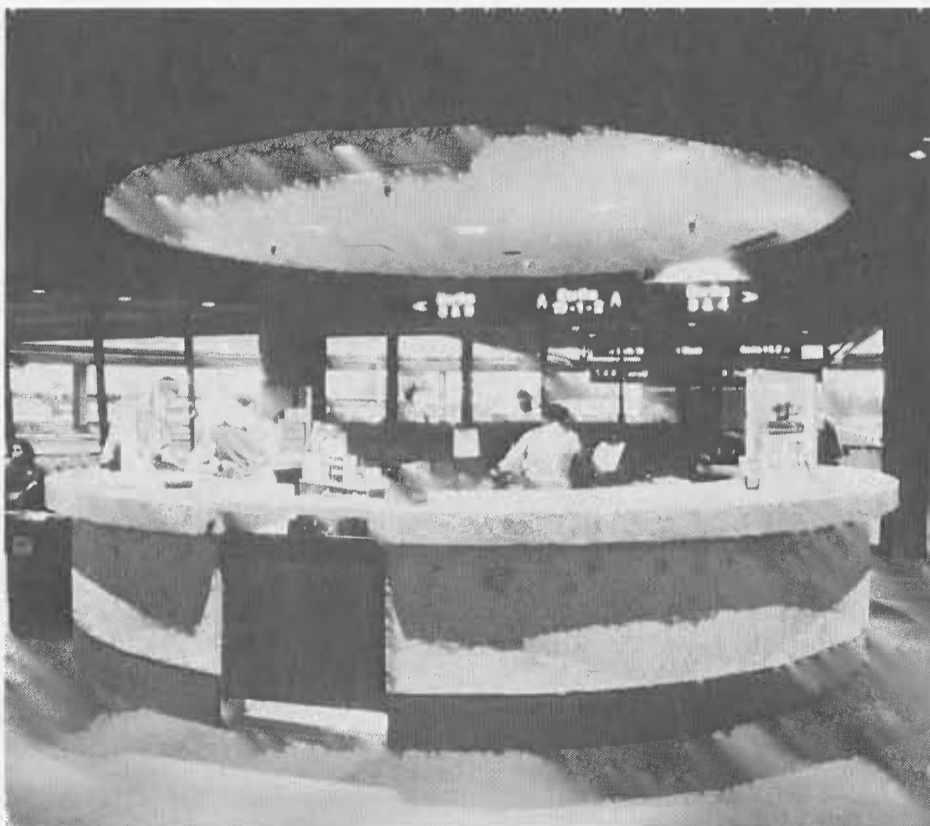
RTD is doing its part to promote the rapidly changing image of commuter bus travel in the United States. The outstanding architectural design for the District's El Monte Bus Station has received the National First Honor award of the Society of Registered Architect for 1973.

RTD is doing its part to promote date a large of buses. "We began with a straight-line loading platform," he said, "then we went to an oval. By the time we made room for all the Busway Flyers, we ended up with a circle."

Conceptually designed by Sam Black of RTD's Engineering Department, the station architecture was carried out by the firm of Daniel, Mann, Johnson & Mendenhall.

The prestigious award reinforces the District's efforts to make bus service more attractive to Southern California commuters. Comfort and convenience add up to an unexpected bonus for patrons utilizing the busway, and Busway ridership figures reflect its growing popularity. For the first time ever, more than 7000 passengers rode on the Busway February 15.

According to Black, the circular shape of the two-level structure evolved out of the need to accomo-



THE STATION'S INTERIOR often takes on the look of an airline terminal, especially at night as pictured above. The original design for the two-level, circular-shaped structure was conceived by Sam Black of RTD's Engineering Department, and carried out by the firm of Daniel, Mann, Johnson & Mendenhall. The Busway project is a joint undertaking of the California Business and Transportation Agency's Department of Transportation (CALTRANS) and RTD in cooperation with the U.S. Department of Transportation's Urban Mass Transportation Administration (UMTA); the Federal Highway Administration; and the cities of El Monte and Los Angeles.

What can I do? Area monitors have some answers



Homer Homrighausen, Division 1-11 Transportation

"We've done what all of the other divisions have done, cut out banks of lights in the train room and in the clerk's office, and even in the boss's office (Division Manager Jack Greasby). The train room gets a little cold since we've turned down the thermostat, especially at night, but our operators are wearing their sweaters and making the best of it."

Harry Hoegeman, Division 1-11 Maintenance & Equipment

"Along with turning off lights and equipment when they are not in use, we've been able to close down the garage on the north side of the property at night and do that work in the main garage. Of course, we haven't moved night work under one roof at the expense of safety at all."



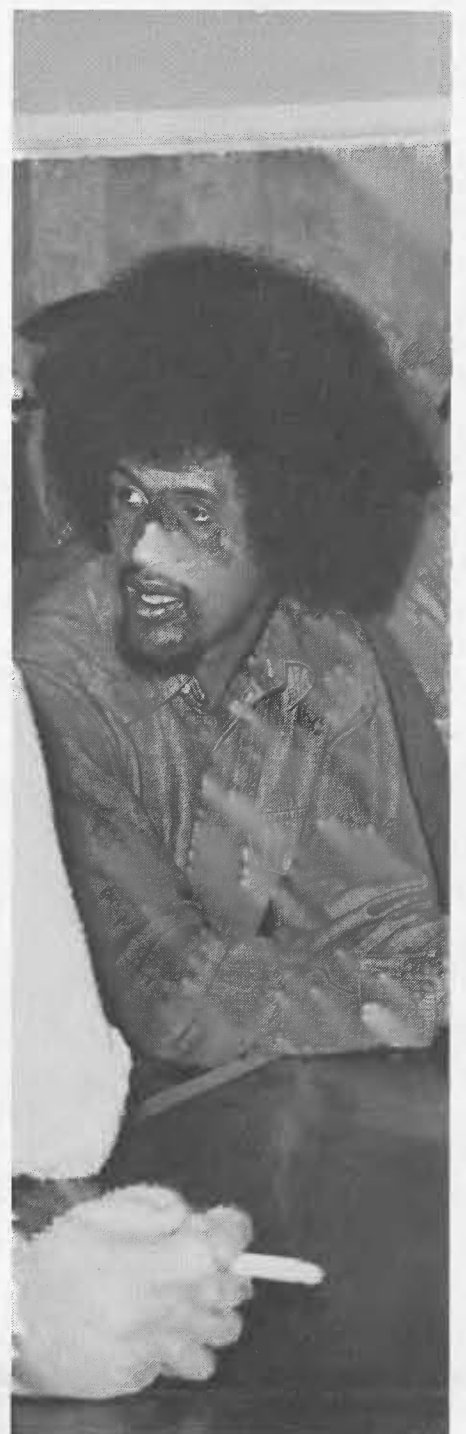
Harold Kelley, Transit Building Basement

"I watch the weather reports everyday, and when the forecast for the next day is 68 degrees or higher, we don't turn on the heating system to warm the building. That way we don't have to run the airconditioning system to cool the building. It is a two-way savings."



Character: RTD's System Shake-up has got plenty of it

System Shake-up possesses a character all its own. But it is the participants, the people who crowd the train room, that make Shake-up the colorful event that it is. These photos offer proof that RTD's operators make each annual System Shake-up an unforgettable experience.



Making headway. . .

□ Friday's Presidential Ball of the Los Angeles Junior Chamber of Commerce should produce a head-to-head battle for one of the organization's top awards between RTD's own Jesse Varrie of Purchasing, and Dan Miller of the rapid transit team. Varrie, chairman of the Youth Affairs Committee, and Miller, chairman of the Urban and Environmental Affairs Committee, are among the contenders for the Chamber's Outstanding Committee of the Year and the Most Improved Committee awards. No matter who wins what, their friendly competition has resulted in great service to the community, and both are to be commended.

□ Operator Ted Kea and his wife Virginia report that their new daughter, Shellee, has grown and grown since she first weighed in at 5 lb. 15 oz. in November — she now weighs over 13 pounds. Ted moved from Division 3 to Division 9 during the current Shake-up.

□ Ted Ormston wants everyone to know that he has just taken a new bride and is willing to receive congratulations and other greetings from any of his fellow RTD employees. By the way, Ted retired in 1969 after a 48-year career in Los Angeles public transportation. He admits there aren't too many former employes of his vintage around, but would enjoy hearing from any them — 1920 W. 65th St., L.A. 90047.



AS A PERSON-TO-PERSON compliment to the PAX Information Switchboard, a newly-formed Mobile Passenger Information Team prepares for another day out in the field. Mildred Henderson (left) and Carol Taylor (right) gather route, fare and schedule information and take it to major business and commercial activity centers throughout Los Angeles. Other Information Team members include David Aranda, Marta Espantman, and Larry Robinson.

Retirements

Name	Classification	Div./ Dept.	Date Employed	Date Effective	Name	Classification	Div./ Dept.	Date Employed	Date Effective
Hewitt, Frank H.	Former Mechanic "A" Retired (RIP) 6/1/66	—	10/16/44	12/31/73	Navatil, Joseph	Former Operator — Retired (Special Roll) 4/18/59	—	9/ 8/28	8/21/73
Fresh, Frank D.	Former Operator — Retired 6/1/63 (RIP)	—	2/15/45	12/30/73	Campbell, Denver D.	Operator	3212	9/15/42	8/18/73
Gustafson, Victor R.	Former Mechanic "A" Retired 1/1/70 (RIP)	—	10/ 1/58	12/25/73	Montgomery, Earl A.	Former Operator — Retired (RIP) 2/25/64	—	9/ 1/22	8/ 9/73
Weirich, Jerome C.	Former Operator — Retired 10/30/72	—	7/ 9/43	12/21/73	Taylor, Willie D.	Former Mech. "A" Retired (Special Roll) 1948	—	8/11/27	8/ 6/73
Arnott, Thomas	Former Div. Manager Retired 6/14/71	—	4/23/41	12/19/73	Hazelton, Orvil	Former Operator Retired 6/1/69	—	9/24/42	7/30/73
Davis, Harry W.	Former Equip. Foreman Retired (P.D.) 1/22/73	—	10/22/45	11/28/73	Charolla, Frank L.	Former Mech. "A" Leadman Retired (RIP) 2/28/69	—	6/18/47	7/25/73
Perryman, Herbert A.	Former Dir. of Research Retired (Special Roll)	—	7/ 1/27	11/27/73	Erdman, William K.	Former Operator Retired (RIP) 11/1/69	—	11/22/43	7/20/73
Gladwell, Dwight L.	Former Operator — Retired 11/25/69	—	12/ 8/51	11/22/73	Gregory, James J.	Former Conductor Retired (RIP) 6/1/53	—	11/28/19	7/18/73
Fulkman, Charles M.	Multitith Operator	9700	7/17/69	11/14/73	Castro, Aurelia S.	Former Utility "B" Retired 6/1/54	—	7/ 7/43	7/16/73
Myers, Howard R.	Former Operator Retired 10/12/68	—	9/21/36	11/ 7/73	Watts, Josiah T.	Former Equip. Supt. Retired (Special Roll) 1/1/55	—	10/ 1/16	7/ 2/73
Benton, Guy H.	Former Operator Retired 9/14/63	—	6/24/41	11/ 5/73	Lane, Otto R.	Former Operator Retired (RIP) 6/1/63	—	11/29/34	6/29/73
Yajima, Takeshi	Former Utility "A" Retired (RIP) 1/1/68	—	2/ 5/47	10/28/73	Nanny, Francis P.	Operator	3206	3/28/45	6/29/73
Hall, Terry R.	Operator	3205	4/17/71	10/27/73	Hall, Arthur M.	Operator	3209	8/30/44	6/24/73
Mayes, Andrew Jackson	Mechanic "B"	3302	9/16/60	10/20/73	Sawyer, Jacob	Former Switchman Retired 6/1/53	—	8/17/11	6/22/73
Sherrill, Ira L.	Former Mech. "B" Retired 1/1/47	—	1/ 1/24	10/19/73	London, Fannie B.	Former Utility Retired 6/1/60	—	4/23/24	6/21/73
Dennison, John	Former Opr. #3204 Retired 6/1/58	—	9/15/19	10/27/73	Hill, Percy Bernard	Former Operator—trans. Ind. Lv. 5/16/73	3801	6/11/47	6/19/73
Rivers, Orrel	Former Mech. "A" Retired (RIP) 1/1/55	—	9/ 2/26	10/ 7/73	Gundersen, Gus M.	Former Equip. Supt. Retired 4/18/72	—	3/22/37	6/19/73
Pacheco, John "W"	Former Laborer "A" Retired (6/1/69)	—	3/17/43	10/ 5/73	Madill, Cyrus A.	Former Mechanic, 1st Cl. Retired 7/27/61	—	5/11/23	6/18/73
Cargill, Ethel C.	Former Car Cleaner Retired 6/30/54	—	1/19/43	10/ 5/73	Ginn, Allen M.	Former Operator Retired 12/27/61	—	10/ 8/43	6/14/73
Ellis, Alvin	Operator	3204	2/21/70	10/ 3/73	Hardowski, Walter	Mech. "A" Leadman Retired (RIP) 10/5/71	—	6/10/58	6/13/73
Rogers, Melvin D.	Former Operator — Retired (P.D.) 4/1/68	—	3/20/42	9/26/73	Bernard, Louis S.	Former Supervisor Trans. Ind. Lve. 5/6/73	3801	7/ 9/47	6/12/73
Perry, Walter P.	Former Flagman Retired 6/1/47	—	5/27/20	9/ 6/73	Fischer, Clarence C.	Former Mess. Clerk Retired 6/1/65	—	11/15/28	6/ 9/73
Van Wickle, Seth	Former Operator Retired 5/15/74	—	7/13/49	9/ 3/73	White, Ott Calvin	Former Operator Retired 8/5/66	—	7/31/25	6/ 2/73
Lashbrook, Charles S.	Former Div. Clerk Retired 12/1/70	—	7/ 6/28	9/ 2/73	Johnson, Harold F.	Operator	3201	3/28/60	5/29/73
Bornstein, Norton H.	Personnel Analyst I	3800	7/22/52	8/30/73	McMichael, Owen L.	Operator	3204	5/25/39	5/28/73
Seeley, Harry T.	Former Operator — Retired (RIP) 5/11/68	—	4/18/44	8/25/73	Kennedy, William L.	Operator	3208	9/ 5/40	5/19/73
Nicosia, Robert	Operator	3207	8/18/72	8/24/73					

HEADWAY

Volume 1 Number 5

Published by and for the employees of the Southern California Rapid Transit District. Send stories, photos, or just the facts to Patrick Barry, Editor, Public Information Department, 1060 S. Broadway, Los Angeles, California 90015.

Southern California Rapid Transit District
1060 South Broadway, Los Angeles 90015

U.S. POSTAGE
paid

FIRST CLASS
Los Angeles, Calif.
Permit No. 28201