

[Metro.net](#) (web)**Resources**[Safety](#)[Pressroom](#) (web)[CEO Hotline](#)[Metro Projects](#)[Facts at a Glance](#)  
(web)[Archives](#)[Events Calendar](#)[Research Center/  
Library](#)[Metro Cafe](#) (pdf)[Metro Classifieds](#)[Retirement  
Round-up](#)**Metro Info**[Strategic Plan](#) (pdf)[Org Chart](#) (pdf)[Policies](#)[Training](#)[Help Desk](#)[Intranet Policy](#)**Need e-Help?**Call the Help Desk  
at 2-4357[E-Mail Webmaster](#)

**The Future Revealed** - from left, Regional Transportation and Development EO Jim de la Loza, County Supervisor and MTA Board Member Mike Antonovich, Deputy CEO John Catoe, Ceo Roger Snoble, LADOT Asst. Gen. Mgr. James Okazaki and Caltrans Deputy Director Frank Quon dedicate real-time video display panel.



## Officials unveil technology partnership at dedication of video panels

By GAYLE ANDERSON

(April 23, 2004) If seeing is believing, then the high-tech video wall flashing in the MTA Headquarters third-floor lobby has been playing to the faithful since its installation April 12.

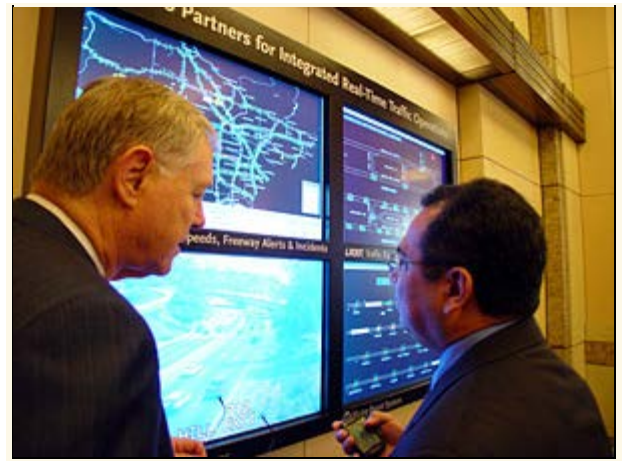
So, when officials gathered, Wednesday, to christen the wide-screen display panels, the unveiling revealed something more than a real-time map of traffic systems. There in a blinking, flashing, moving minute was the next generation of ITS technology poised like a can of Raid at the traffic pests of congestion, delays, and too many cars.

But, what exactly does it do? Countywide Planning EO Jim de la Loza explained, "The panels are a demonstration of the technology that allows agencies to coordinate real-time information between the individual systems managed by Metro, CalTrans and LADOT."

Each panel, he said, covers different ground and spouts continuous information that helps control 500 miles of freeway, the entire Metro Rapid fleet and 3,100 arterial traffic signals.

The coordinated effort is a budding

County Supervisor Mike Antonovich and Countywide Planning EO Jim de la Loza study the stream of information.



PHOTOS BY GAYLE ANDERSON

partnership that will welcome nine more agencies in the coming months, including Metro Rail, CHP, municipal transit operators from around the county, the Fire Department and Sheriff's Department, the World Airports, and the ports of Los Angeles and Long Beach, he said.

Principal partners Frank Quon of CalTrans and LADOT's James Okazaki, present for the unveiling, spoke in praise of the partnership of advancing technology, as did MTA CEO Roger Snoble.

"This is a very big step in an important future," said Snoble. "With this system, we're on the brink of technology that can solve traffic problems."