



[Metro.net](#) (web)

Resources

▶ [Safety](#)

▶ [Pressroom](#) (web)

▶ [CEO Hotline](#)

▶ [Metro Projects](#)

▶ [Facts at a Glance](#)
(web)

▶ [Archives](#)

▶ [Events Calendar](#)

▶ [Research Center/
Library](#)

▶ [Metro Cafe](#) (pdf)

▶ [Metro Classifieds](#)

▶ [Retirement
Round-up](#)

Metro Info

▶ [Strategic Plan](#) (pdf)

▶ [Org Chart](#) (pdf)

▶ [Policies](#)

▶ [Training](#)

▶ [Help Desk](#)

▶ [Intranet Policy](#)

Need e-Help?

Call the Help Desk
at 2-4357

[E-Mail Webmaster](#)

Artists to Showcase Six New Public Art Projects on Metro Rail System

- Meet the Artists' Metro Art Tour and Reception: Meet the artists of six new projects on the Metro Rail system Sunday afternoon, March 13, from 2 to 3 p.m.
- A reception follows at 4 p.m. at the First and Hill streets entrance to the Civic Center Metro Rail Station. The public is invited.

Featured artworks and artists:

[In the Living Rock](#)

by Samm Kunce

[Civic Center Benches](#) by

Peter Reiquam

[No Title](#)

by Bob Zoell

[Photographs on the DC](#)

[Subway](#)

by Andrew Z. Glickman

[A Florence Moment](#) by

Ricardo Duffy

[The Will to Progress](#) by

Ricardo Mendoza

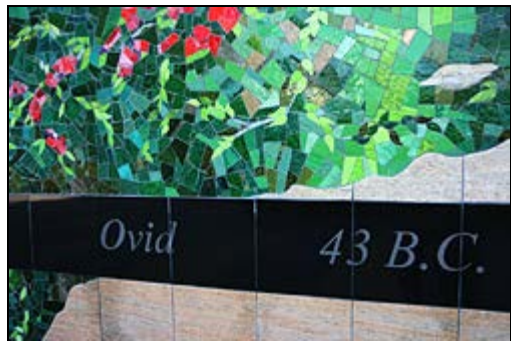
Six new and engaging public artworks will be unveiled in Metro Rail stations this Sunday to celebrate new artworks in the Metro Rail System.

These new artworks create a vibrant artistic environment that transports passengers' imaginations, bringing a touch of humanity to rail riders' commute. This 'underground art gallery' will be showcased by the artists themselves and Metro Art docents at five Metro Rail Stations, followed by a public reception at the Civic Center Metro Red Line Station in downtown Los Angeles.

The featured artists have produced glass and granite tile murals and benches at Civic Center Station, ceramic tile murals at the Wilshire/Vermont Red Line Station, illuminated photo panels at Wilshire/Normandie Red Line Station, ceramic artwork panels at the Florence Metro Blue Line Station, and ceramic artwork on columns at Firestone Metro Blue Line Station.

The featured artists and artworks are:

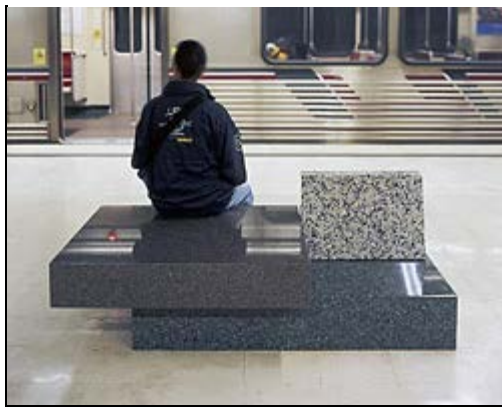
"In the Living Rock" by Samm Kunce, in the First Street Plaza of the Civic Center Station.



Samm Kunce's artwork "In the Living Rock" explores ideas gathered from science and literature. A recurrent theme in her work is the celebration of inherent beauty of natural materials. The tile mural runs the length of the curved planter bed wall and a hanging garden exquisitely executed in Venetian cake glass mosaic supported by an expanse of striated sand colored granite.

"Civic Center Benches" by Peter Reiquam, platform of the Civic Center Station.

Artist Peter Reiquam specializes in the design and fabrication of public furnishings that are both fun and utilitarian. His recent work, a sleek series of four contemporary subway 'sofas,' provide a



seating area where commuters may comfortably sit and talk to one another while waiting for the train.

"No Title" by Bob Zoell, platforms of Wilshire/Vermont Metro Rail Station.



Artist Bob Zoell has abstracted the appearance and arrangement of typographic design symbols to create a bold and graphic series of ceramic tile murals. The artwork covers four columns at station platforms: two on the upper level and two in the lower. The artist worked carefully to establish an animated and playful dynamic between his characters. Text appears to dance at it's own happy pace, while other figures run off kilter as if ready to jump off the columns to greet commuters.

"Photographs on the DC Subway" by Andrew Z. Glickman: Seven illuminated photo panels on the mezzanine level of the Wilshire/Normandie Station.



Andrew Z. Glickman uses photography to document how subway passengers behave among total strangers. In train cars with ample space, passengers position themselves at carefully calibrated distances from their neighbors. However, once that space has been established they begin to relax and act as they might do in the privacy of home. Glickman prefers to work unnoticed using a 35mm rangefinder camera with a silent shutter and without a flash.

"A Florence Moment" by Ricardo Duffy: Platform of the Florence Station of the Metro Blue Line.

Artist Ricardo Duffy, after visiting the neighborhood along Florence Avenue, was inspired to create tile images depicting lively local storefronts, dynamic pedestrian traffic and area landmarks by the dynamic foot traffic along the storefront-filled street. Lively and colorful, the immediate community is primarily a mix of new immigrants from Mexico and Central America along with long-standing African American and Anglo residents. The Metro



Florence Station is a narrow center platform rail station that sits in the center of this bustling community. Four large-scale steel sign posts on the platform house seating for the rail customers. The artist attached eight whimsical ceramic artwork panels to the top of the seating structures.

"The Will to Progress" by Ricardo Mendoza: street-level entrance of the Firestone Station of the Metro Blue Line.



Artist Ricardo Mendoza designed a brightly energetic ceramic artwork at the existing concrete columns at the lower level of Florence Station in the area where passengers make bus/rail connections. The imagery consists of larger than life figures appearing to hold up the railway. The hand painted ceramic tile, both flat and relief, gives the columns a vibrant and unique look that transforms a predominantly hard-edged environment into one of inspiration and color.