

[Metro.net](#) (web)

Resources

► [Safety](#)

► [Pressroom](#) (web)

► [Ask the CEO](#)

► [CEO Forum](#)

► [Employee Recognition](#)

► [Employee Activities](#)

► [Metro Projects](#)

► [Facts at a Glance](#)
(web)

► [Archives](#)

► [Events Calendar](#)

► [Research Center/
Library](#)

► [Metro Classifieds](#)

► [Bazaar](#)

Metro Info

► [30/10 Initiative](#)

► [Policies](#)

► [Training](#)

► [Help Desk](#)

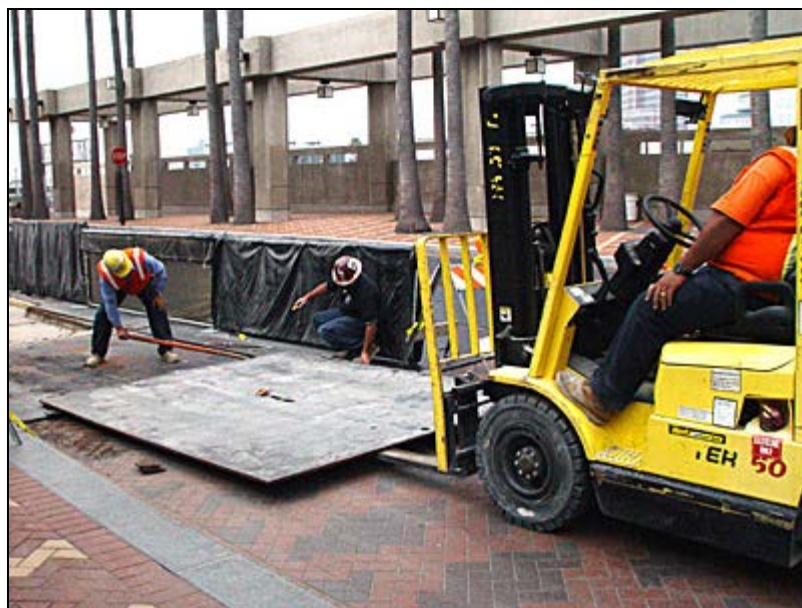
► [Intranet Policy](#)

Need e-Help?

Call the Help Desk
at 2-4357

[Contact myMetro.net](#)

Workmen place a temporary steel plate in the busway of Patsaouras Plaza during surface repair project in 2004.



Patsaouras Plaza to Close 10 Days for Repairs to Surface

(Sept. 28, 2006) Patsaouras Plaza will be closed to bus and vehicle traffic for 10 days between Oct. 2 and Oct. 16 for repairs to the surface and installation of new paving bricks near the top of the bus ramp.

The project will begin at 9 a.m., Monday, Oct. 2, but for the remainder of the project, work will be conducted during weekdays from 6 a.m. until 6 p.m. The Plaza will reopen to normal bus service and vehicle traffic on Monday, Oct. 16.

Traffic control barriers will be set up around the construction area. Fliers explaining the closure and directing patrons to alternate bus boarding locations along Vignes Street will be posted throughout the Plaza.

Three buses – Flyaway, Dash Route D and the Metrolink shuttle – will continue to use the Plaza, boarding and discharging passengers on the east side of the busway near the ramp to Vignes Street. All other Metro and municipal buses will board and discharge passengers either on Vignes or on Cesar Chavez Avenue.

Members of the Bus Operations Control staff and Metro Security officers will be on hand to assist operators and customers throughout the first two days of construction.

A second phase of the Plaza refurbishment project, to include spot repairs and the replacement of paving bricks in other areas of Patsaouras Plaza, has not yet been scheduled.

An extensive project to repair damage to the surface of Patsaouras Plaza was conducted over several months beginning in July 2004.

Cracked and displaced brick pavers and granite blocks were removed near the top of the bus ramp and at the south end of the Plaza. New pavers and stones were seated on a layer of bedding sand poured over a waterproof membrane.

| [Home](#) | [Phone Directory](#) | [Forms Online](#) | [FIS Online](#)