

[Metro.net](#) (web)

## Resources

► [Safety](#)

► [Pressroom](#) (web)

► [Ask the CEO](#)

► [CEO Forum](#)

► [Employee Recognition](#)

► [Employee Activities](#)

► [Metro Projects](#)

► [Facts at a Glance](#)  
(web)

► [Archives](#)

► [Events Calendar](#)

► [Research Center/ Library](#)

► [Metro Classifieds](#)

► [Bazaar](#)

## Metro Info

► [30/10 Initiative](#)

► [Policies](#)

► [Training](#)

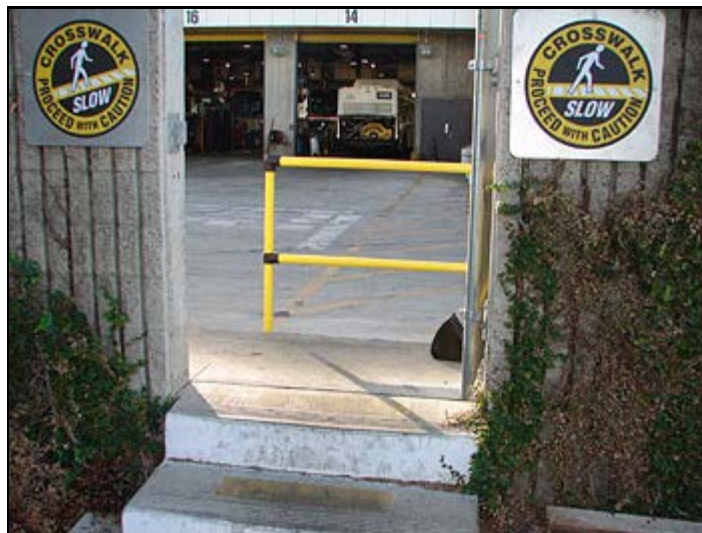
► [Help Desk](#)

► [Intranet Policy](#)

## Need e-Help?

Call the Help Desk  
at 2-4357

[Contact myMetro.net](#)



Employees crossing into the Division 15 yard not only have two safety reminders, they are directed to the crosswalk by a yellow railing.

- Photos by Michael Lambeth

## Pedestrian Railings Improve Safety in Division 15 Yard

- Andy Gonzalez's ideas should help prevent accidents

By MICHAEL LAMBETH

(Nov. 9, 2006) Getting to work in the maintenance shops at East Valley Division 15 is safer now, thanks to the ideas of a concerned maintenance employee.

Following suggestions by Equipment Maintenance Supervisor Andy Gonzalez, pedestrian control railings and caution signs were added at each crosswalk entrance in the Division 15 bus yard to alert employees and remind them to be careful when crossing to their work areas.

Walking from parking lot to their work areas, maintenance personnel enter an area of heavy vehicular traffic. The railings direct them to the crosswalks, which makes them more visible to approaching vehicles.

On a number of occasions, Gonzalez – then a mechanic leader – received reports of near misses with maintenance personnel as they hurried into work from the parking areas.

His idea was to place barriers at each entrance to the yard and before the crosswalks as a reminder for everyone to be careful before entering the yard

"The railings make our people redirect their path before entering the yard", he says. "That will give them a little extra time to see oncoming traffic, or for anyone driving in the yard time to see them."



EMS Andy Gonzalez's concern for safety in the yard led to installation of pedestrian railings like this one.

Gonzalez brought his concerns and idea to Division 15 Maintenance Manager John Roberts, who asked the Facilities Maintenance staff to begin the installation. As an added precaution, Facilities Maintenance Supervisor Dave Ratcliff added the signage at each entrance as a further reminder to be careful.

"Any safety precaution we can take that makes the workplace safer is a plus for our division and employees", says Roberts. "The safety of our staff comes first."

---

| [Home](#) | [Phone Directory](#) | [Forms Online](#) | [FIS Online](#)