

[Metro.net](#) (web)

Resources

► [Safety](#)

► [Pressroom](#) (web)

► [Ask the CEO](#)

► [CEO Forum](#)

► [Employee Recognition](#)

► [Employee Activities](#)

► [Metro Projects](#)

► [Facts at a Glance](#) (web)

► [Archives](#)

► [Events Calendar](#)

► [Research Center/Library](#)

► [Metro Classifieds](#)

► [Bazaar](#)

Metro Info

► [30/10 Initiative](#)

► [Policies](#)

► [Training](#)

► [Help Desk](#)

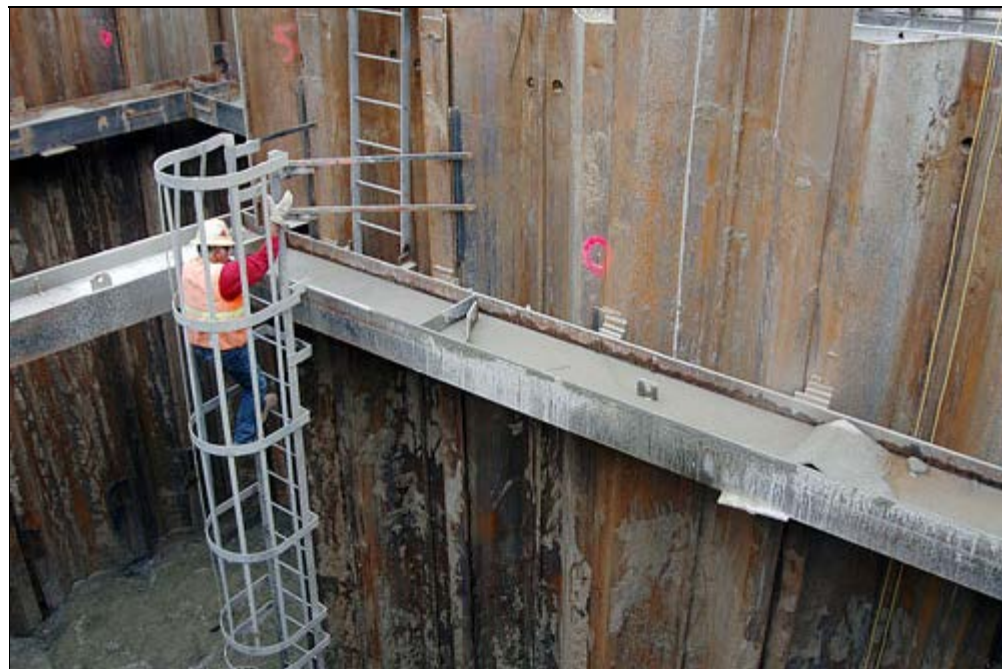
► [Intranet Policy](#)

Need e-Help?

Call the Help Desk
at 2-4357

[Contact myMetro.net](#)

Just feet northwest of the corner of the Figueroa Street/Exposition Boulevard intersection, a worker climbs from an excavation dug to bury a 61-inch-diameter water main. The water main was moved from 13 to 42 feet below the surface so it would rest four feet below the future Expo Light Rail Line trains.



Photos by Ned Racine

Expo Light Rail Line Construction Proceeds Above and Below Ground

By NED RACINE, Editor

(Feb. 28, 2008) One doesn't need to be a construction expert to see the Expo Light Rail Line is under construction. Traveling along Flower Street or Exposition Boulevard or National Boulevard reveals the signs.



Workers clear asphalt from a future parking area at Washington and National boulevards. The planned terminus of Phase I of the Expo Light Rail Line is at Washington/National.

A future parking area is being cleared at National and Washington

boulevards, the planned terminus for Phase I of the project. A 61-inch-diameter water main has been snugly buried 42 feet below the ground near the Figueroa Street/Exposition Boulevard intersection so future trains can travel four feet above it as they swing west past the University of Southern California.

With their back towards National Boulevard, workers remove freight train rail from the future alignment of the Expo Light Rail Line. Phase I of Expo will be approximately 8.6 miles in length and will connect Downtown Los Angeles and Culver City.



Rail and ties are being removed along the route, as is foliage.

The light rail line, scheduled to open in 2010, will connect Downtown Los Angeles and Culver City, traveling along Metro's Exposition right-of-way. Approximately 8.6-miles long, the line will feature nine new stations, with an estimated travel time under 30 minutes.



Several blocks west of La Brea Avenue, workers remove foliage from the Expo Light Rail Line route. Phase 1 of the Expo Line is scheduled to open in the summer of 2010.

The Expo Line runs parallel and south of the heavily used I-10 freeway.

These photos were taken February 19.