

[Home](#)[CEO Hotline](#)[Viewpoint](#)[Classified Ads](#)[Archives](#)[Metro.net \(web\)](#)

Resources

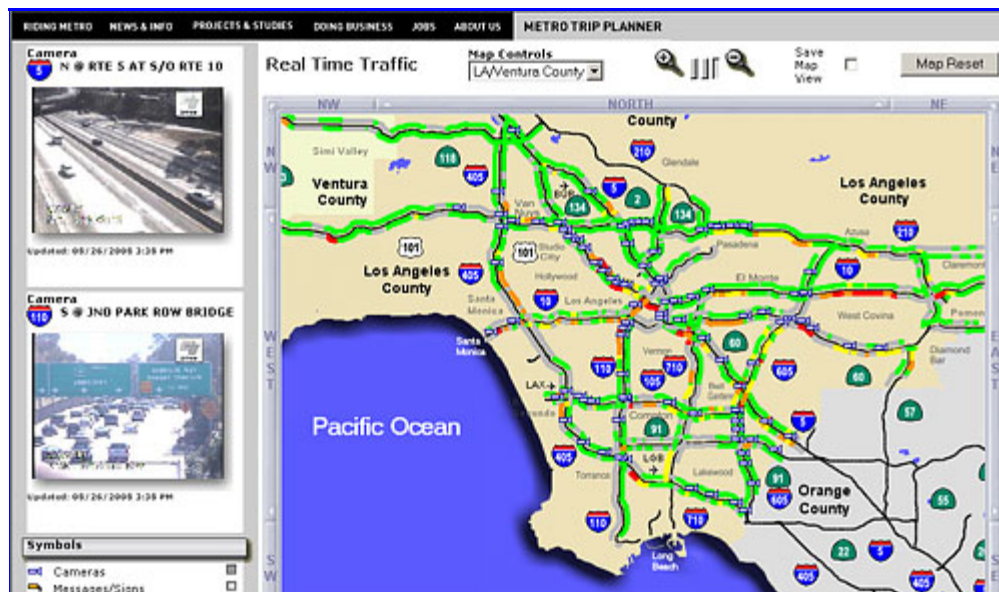
[Safety](#)[Pressroom \(web\)](#)[Ask the CEO](#)[CEO Forum](#)[Employee Recognition](#)[Employee Activities](#)[Metro Projects](#)[Facts at a Glance \(web\)](#)[Archives](#)[Events Calendar](#)[Research Center/Library](#)[Metro Classifieds](#)[Bazaar](#)

Metro Info

[30/10 Initiative](#)[Policies](#)[Training](#)[Help Desk](#)[Intranet Policy](#)

Need e-Help?

Call the Help Desk
at 2-4357

[Contact myMetro.net](#)

Metro offers real-time traffic information for visitors to metro.net. Click on orange "Real Time Traffic" bar on metro.net.

Less Travel This Labor Day Predicts AAA

(Aug. 26, 2008) If you plan on traveling this Labor Day, you will be joined by slightly fewer people, according to the Automobile Club of Southern California.

In a survey released Aug. 25, the Automobile Club expected the number of Labor Day travelers in Southern California to drop approximately 1.4 percent.

The organization expects more than 2.7 million Southern California residents to travel during the upcoming three-day weekend—approximately 81 percent traveling by automobile—a decrease of about 1.8 percent. The survey predicts 374,000 will travel by plane, a 3.4 percent decrease from 2007.

In results from another survey, the Automobile Club predicts that the top five destinations for Southern California Labor Day travelers will be:

- Las Vegas
- San Diego
- Central Coast
- Baja Mexico cruises (departing from San Pedro)
- Northern California (San Francisco, Monterey, Napa and Lake Tahoe)

