



# **Rail Fleet Services Monthly Report August 2007**



**Metro**

# Table of Contents

- **Safety**
  - Industrial Injuries Page 3
  - Rail Vehicle Accidents & Major Incidents Page 4
- **Customer Service**
  - Service Delivery – AM/PM Pull-Outs Page 5
  - Mean Miles Between Failures (Major) Page 6
- **Business Processes**
  - Incident Problems & Locations
    - Blue & Red Lines Page 7
  - Incident Problems & Locations
    - Green & Gold Lines Page 8
  - Preventative Maintenance Compliance Page 9
- **Finance**
  - Vandalism & Graffiti Costs Page 10
  - Material & Labor Costs Page 11
  - Cost per mile Page 12
- **Growth**
  - Rail Fleet Service Training Page 13

# Industrial Injuries – Lost Work Hours

	Sep-06	Oct-06	Nov-06	Dec-06	Jan-07	Feb-07	Mar-07	Apr-07	May-07	Jun-07	Jul-07	Aug-07
Blue Line	160	184	176	168	184	120	144	120	21	0	0	72
Red Line	8	16	8	0	0	152	224	336	304	200	264	272
Gold Line	176	176	128	328	376	320	216	264	288	392	264	368
Green Line	0	104	176	160	176	64	0	0	0	0	0	0
Totals	344	480	488	656	736	656	584	720	613	592	528	712

## August 2007 Lost Work Hours

### Blue Line – 110 Assigned Employees (105 Active)

- Service Attendant – 72 hours

### Red Line – 114 Assigned Employees (107 Active)

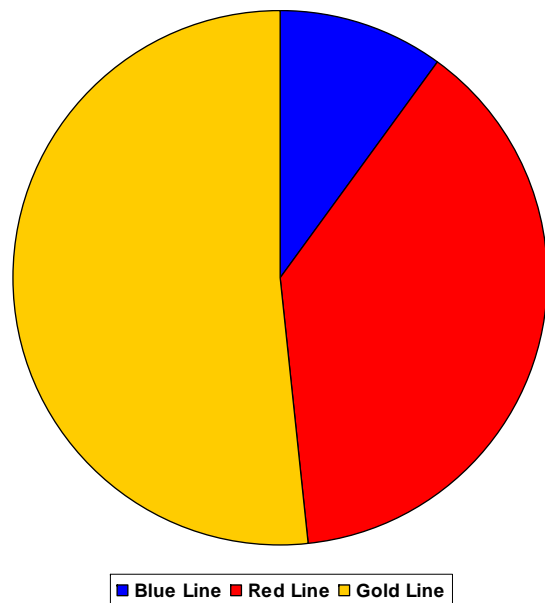
- Maintenance Specialist – 184 hours
- Service Attendant – 40 hours
- Service Attendant – 48 hours

### Green Line – 46 Assigned Employees (44 Active)

### Gold Line – 45 Assigned Employees (44 Active)

- Maintenance Specialist – 184 hours
- Service Attendant – 184 hours

## August 2007 Lost Work Hours



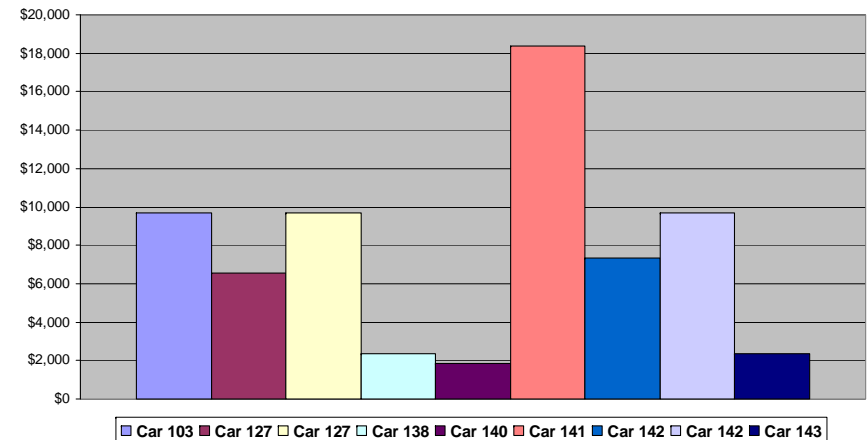
# Rail Vehicle Accidents & Major Incidents

	Sep-06	Oct-06	Nov-06	Dec-06	Jan-07	Feb-07	Mar-07	Apr-07	May-07	Jun-07	Jul-07	Aug-07
Blue Line	\$526	\$0	\$1,360	\$48,543	\$1,236	\$1,027	\$1,485	\$6,869	\$57	\$9,551	\$4,652	\$67,854
Red Line	\$0	\$0	\$0	\$0	\$0	\$0	\$0	\$0	\$0	\$0	\$0	\$0
Gold Line	\$0	\$2,066	\$0	\$1,765	\$0	\$0	\$0	\$0	\$0	\$0	\$0	\$0
Green Line	\$0	\$0	\$0	\$0	\$0	\$0	\$0	\$0	\$0	\$0	\$0	\$0
Totals	\$526	\$2,066	\$1,360	\$50,308	\$1,236	\$1,027	\$1,485	\$6,869	\$57	\$9,551	\$4,652	\$67,854

## August 2007 Accidents & Major Incidents

### August 2007 Rail Vehicle Accidents & Major Incidents

- Aug. 27, Car 127 Train vs. Auto Washington & Maple, Los Angeles - \$6,573
- Aug. 27, Car 142 Train vs. Auto, Washington & Maple, Los Angeles - \$7,365
- Aug. 28, Car 140 Train vs. Auto, Long Beach & 16<sup>th</sup> St., Long Beach - \$1,826
- Aug. 28, Car 141 Train vs. Auto, Long Beach & 16<sup>th</sup> St., Long Beach - \$18,357
- Aug. 22, Car 103 Pantograph Incident, 10<sup>th</sup> St., Long Beach - \$9,687
- Aug. 22, Car 127 Pantograph Incident, 10<sup>th</sup> St., Long Beach - \$9,687
- Aug. 22, Car 138 Pantograph Incident, 10<sup>th</sup> St., Long Beach - \$2,336
- Aug. 22, Car 142 Pantograph Incident, Wardlow Blvd., Long Beach - \$9,687
- Aug. 22, Car 143 Pantograph Incident, Wardlow Blvd., Long Beach - \$2,336



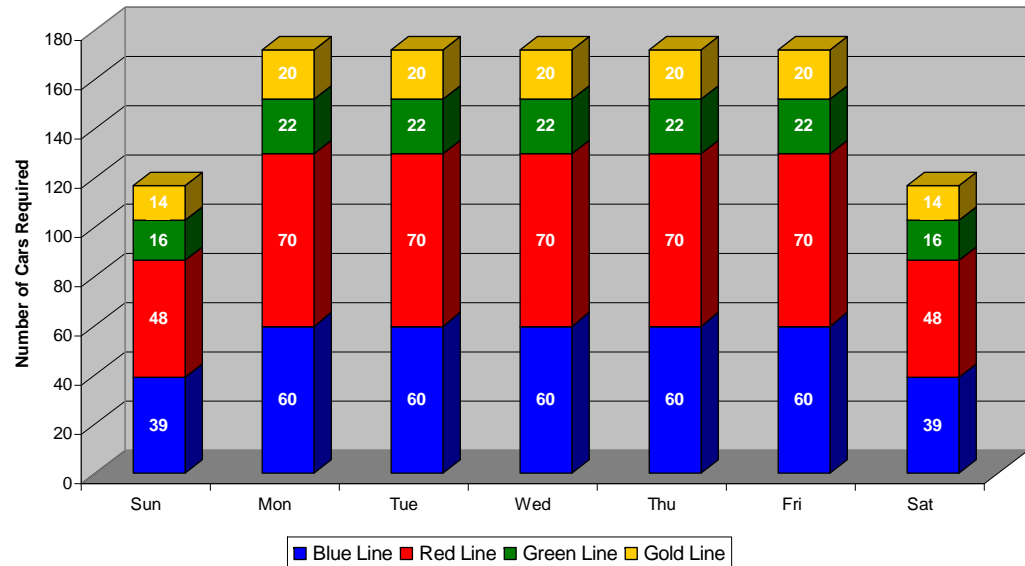
# Service Delivery – AM/PM Pull-Outs

## Cars Available for AM/PM Pull-Outs

	Sep-06	Oct-06	Nov-06	Dec-06	Jan-07	Feb-07	Mar-07	Apr-07	May-07	Jun-07	Jul-07	Aug-07
Blue Line	100%	100%	100%	100%	100%	100%	100%	100%	100%	100%	100%	100%
Red Line	100%	100%	100%	100%	100%	100%	100%	100%	100%	100%	100%	100%
Green Line	100%	100%	100%	100%	100%	100%	100%	100%	100%	100%	100%	100%
Gold Line	100%	100%	100%	100%	100%	100%	100%	100%	100%	100%	100%	100%

- **Blue Line – Fleet Size 69 cars**
  - Weekday pull-out: 60 cars
  - Weekend pull-out: 39 cars
  - **Monthly Mileage: 402,676 miles**
- **Red Line - Fleet Size 104 cars**
  - Weekday pull-out: 70 cars
  - Weekend pull-out: 48 cars
  - **Monthly Mileage: 547,630 miles**
- **Gold Line – Fleet Size 24 cars**
  - Weekday pull-out: 20 cars
  - Weekend pull-out: 14 cars
  - **Monthly Mileage: 132,087 miles**
- **Green Line – Fleet Size 28 cars**
  - Weekday pull-out: 22 cars
  - Weekend pull-out: 16 cars
  - **Monthly Mileage: 216,980 miles**

## AM/PM Pull-Out Requirements



# Mean Miles Between Failures (Major)

**August 2007**

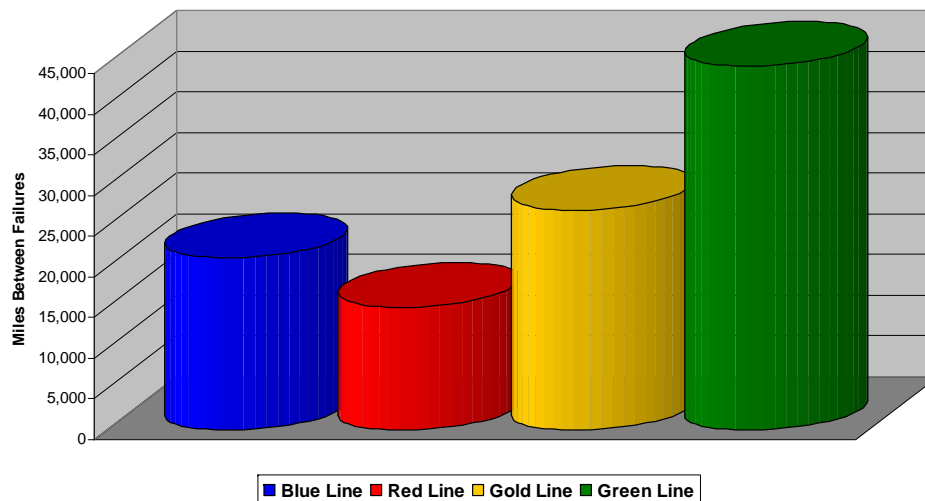
## FTA Major Failures

**Blue Line: 21,185 miles (20 FTA Major Failures)**

**Red Line: 15,125 miles (37 FTA Major Failures)**

**Gold Line: 27,122 miles (5 FTA Major Failures)**

**Green Line: 44,736 miles (5 FTA Major Failures)**



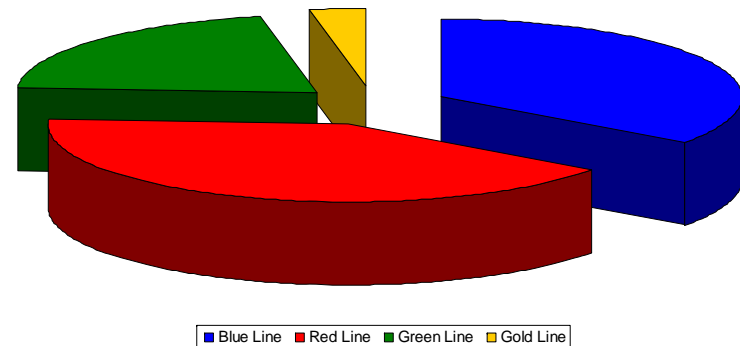
## Repeat Failures

**Blue Line: 22 Repeat Failures**

**Red Line: 26 Repeat Failures**

**Gold Line: 2 Repeat Failures**

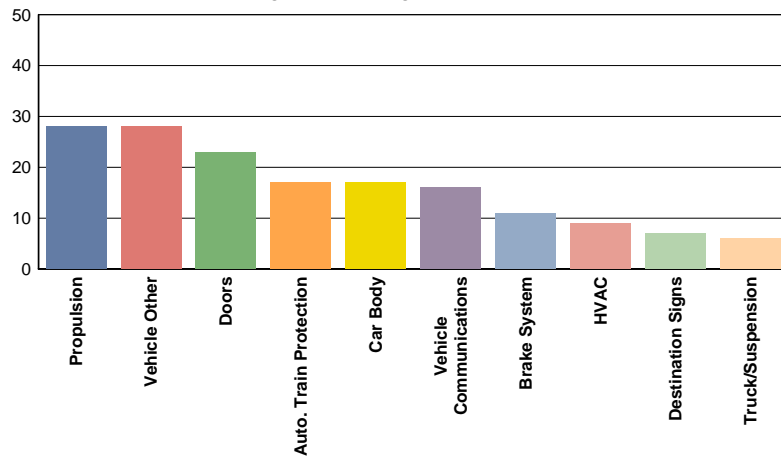
**Green Line: 13 Repeat Failures**



# Incident Problems & Locations – Blue & Red Lines

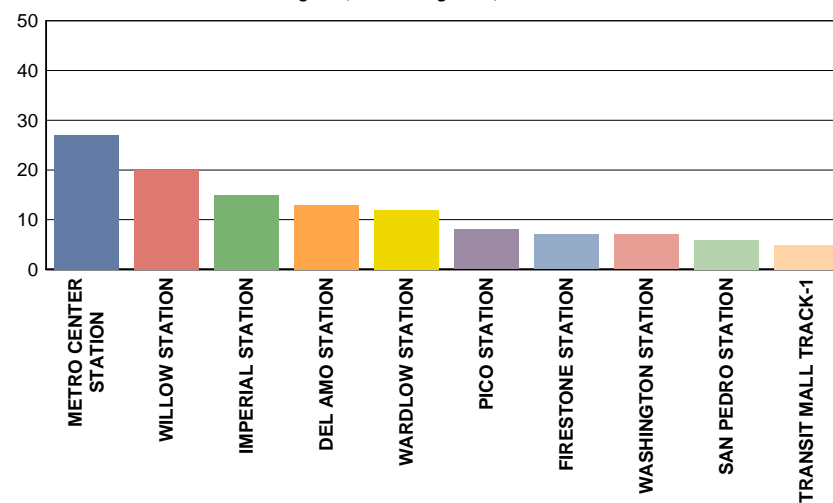
Count of Top 10 Incident Problem Codes

August 1, 2007 to August 31, 2007 Blue Line



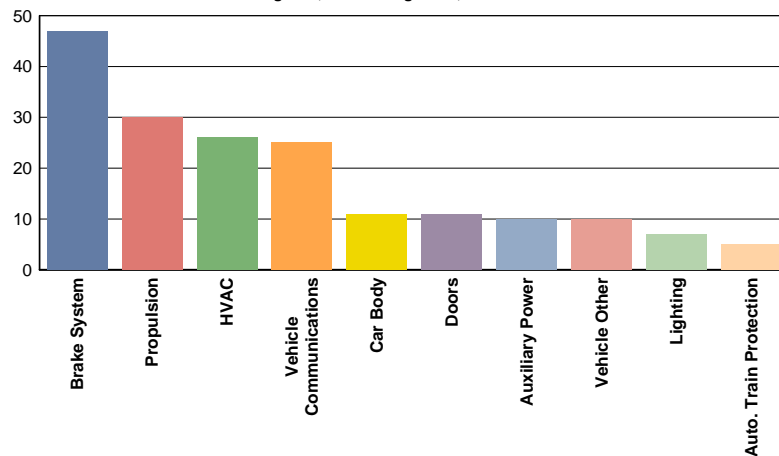
Count of Top 10 Rail Vehicle Incidents by Location

August 1, 2007 to August 31, 2007 Blue Line



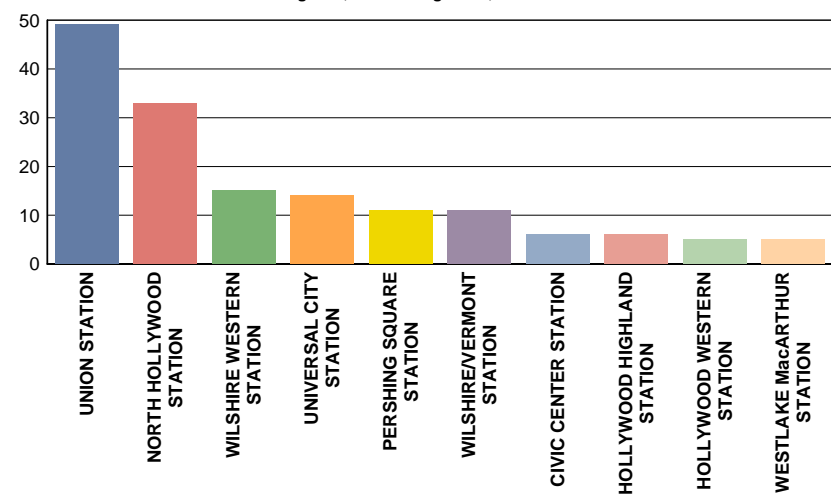
Count of Top 10 Incident Problem Codes

August 1, 2007 to August 31, 2007 Red Line



Count of Top 10 Rail Vehicle Incidents by Location

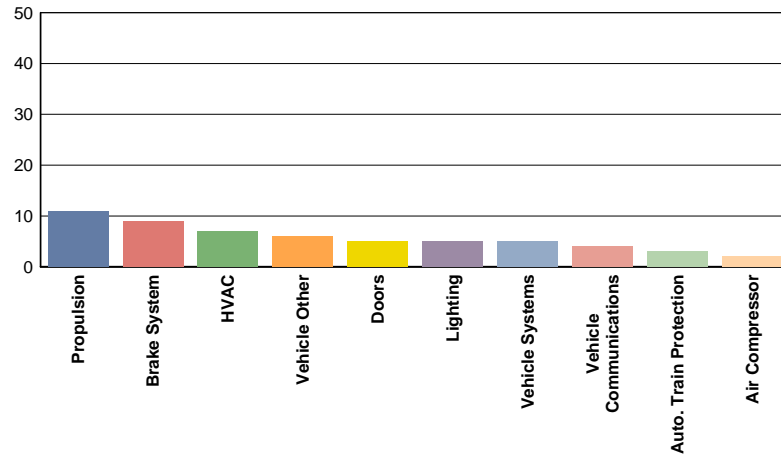
August 1, 2007 to August 31, 2007 Red Line



# Incident Problems & Locations – Green & Gold Lines

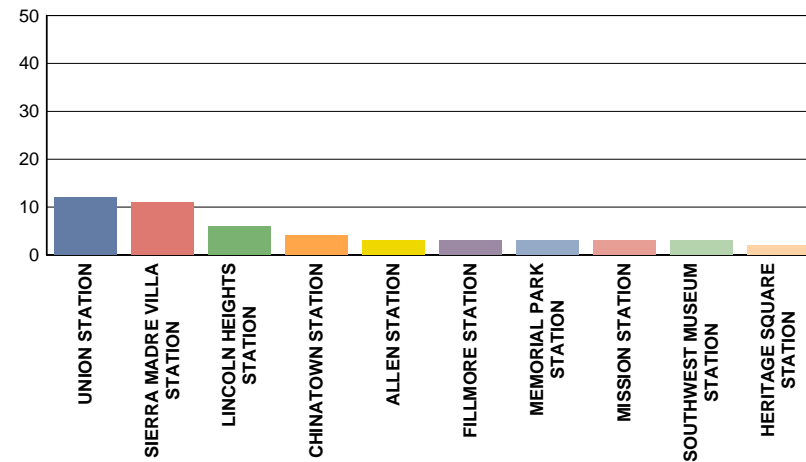
Count of Top 10 Incident Problem Codes

August 1, 2007 to August 31, 2007 Gold Line



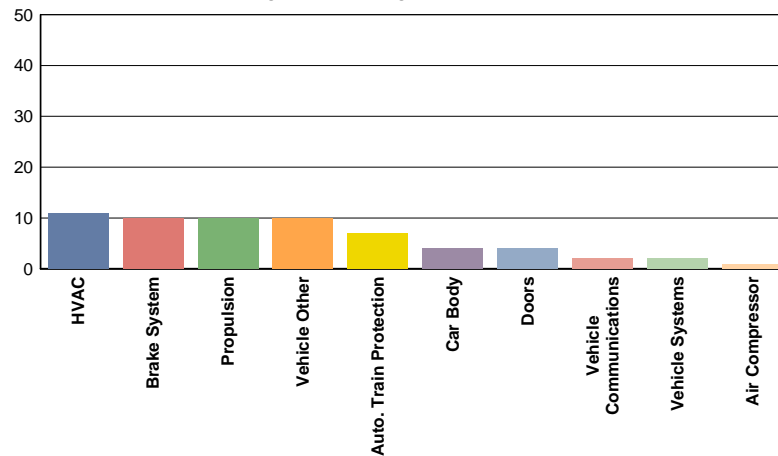
Count of Top 10 Rail Vehicle Incidents by Location

August 1, 2007 to August 31, 2007 Gold Line



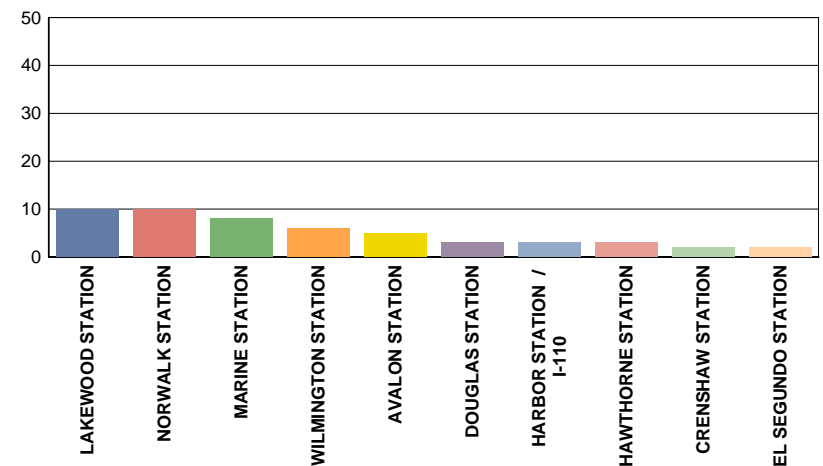
Count of Top 10 Incident Problem Codes

August 1, 2007 to August 31, 2007 Green Line



Count of Top 10 Rail Vehicle Incidents by Location

August 1, 2007 to August 31, 2007 Green Line





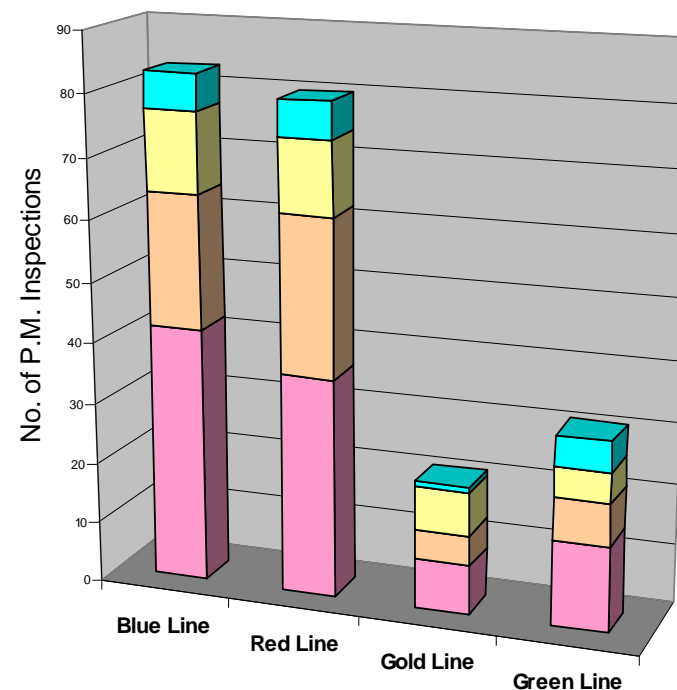
# Preventative Maintenance Compliance

	Sep-06	Oct-06	Nov-06	Dec-06	Jan-07	Feb-07	Mar-07	Apr-07	May-07	Jun-07	Jul-07	Aug-07
Blue Line	100%	100%	100%	100%	100%	100%	100%	100%	100%	100%	100%	100%
Red Line	100%	100%	100%	100%	100%	100%	100%	97%	100%	100%	100%	100%
Green Line	100%	100%	100%	100%	100%	100%	100%	100%	100%	100%	100%	100%
Gold Line	100%	100%	100%	100%	100%	100%	100%	100%	100%	100%	100%	100%

## August 2007 Preventative Maintenance Inspections

No. of P.M. Inspections	5K	10K	20K	60K	Totals
Blue Line	42	22	13	6	83

No. of P.M. Inspections	7K	14K	28K	84K	Totals
Red Line	36	26	12	6	80
Gold Line	8	5	7	1	21
Green Line	14	7	5	5	31



# Vandalism & Graffiti Report

	Sep-06	Oct-06	Nov-06	Dec-06	Jan-07	Feb-07	Mar-07	Apr-07	May-07	Jun-07	Jul-07	Aug-07
Blue Line	\$56,934	\$59,783	\$69,327	\$71,482	\$62,198	\$72,185	\$56,911	\$36,165	\$22,571	\$33,340	\$41,364	\$41,364
Red Line	\$20,681	\$20,779	\$16,418	\$35,928	\$17,487	\$16,387	\$11,893	\$12,098	\$17,357	\$21,464	\$11,906	\$11,906
Green Line	\$32,703	\$32,183	\$37,306	\$14,351	\$33,319	\$32,943	\$26,026	\$29,903	\$25,863	\$28,478	\$32,716	\$33,547
Gold Line	\$12,404	\$12,282	\$8,407	\$11,735	\$8,799	\$6,158	\$3,522	\$4,094	\$9,778	\$4,347	\$4,840	\$5,992
Totals	\$122,722	\$125,027	\$131,458	\$133,496	\$121,803	\$127,673	\$98,352	\$82,260	\$75,569	\$87,629	\$90,826	\$92,809

## August 2007 Vandalism & Graffiti

Windows replaced: 146 @ \$18,057

Vandal Shields replaced: 610 @ \$9,268

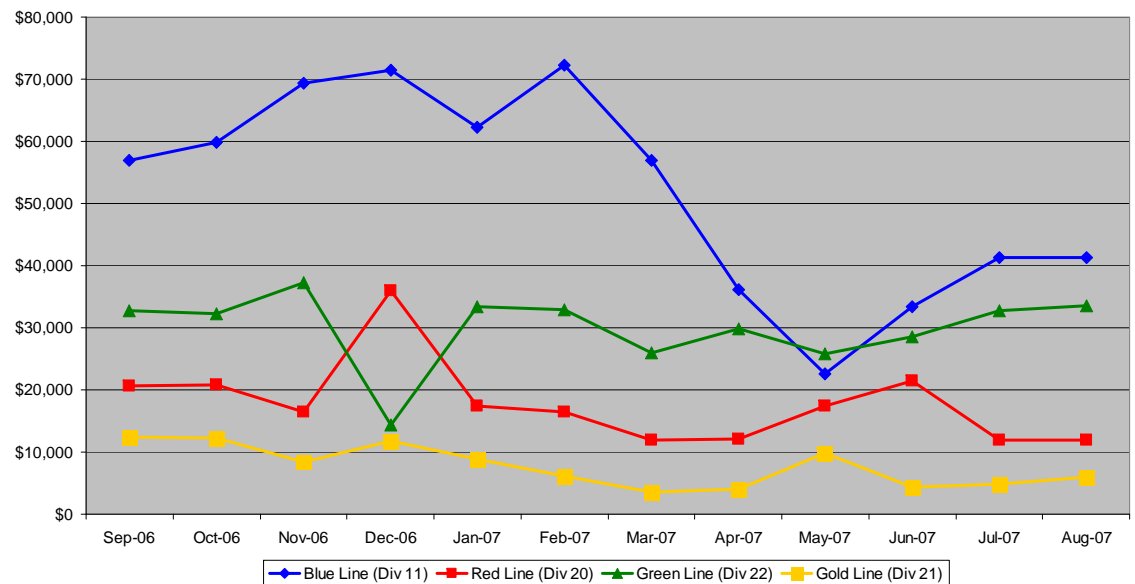
Seats cleaned: 741

Seats replaced: 76 @ \$3,275

Ext./Int. repairs: 18 cars @ \$1,975

Labor = \$60,234

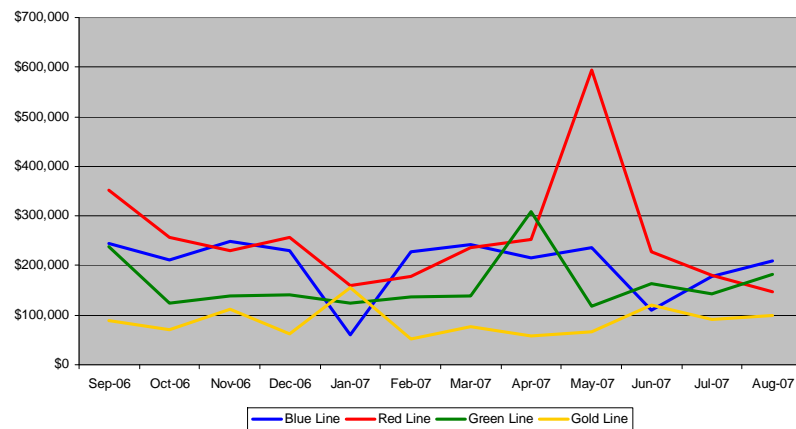
Total for August 2007: \$ 92,809



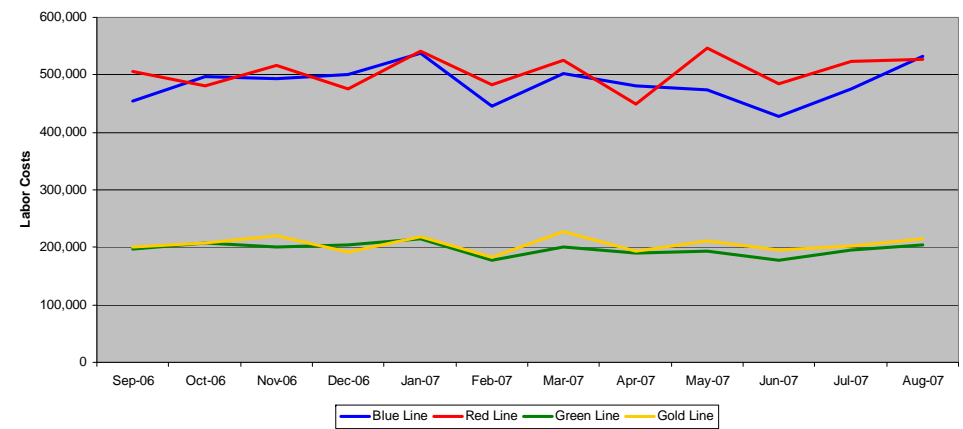
# Material and Labor Costs

Material Costs	Sep-06	Oct-06	Nov-06	Dec-06	Jan-07	Feb-07	Mar-07	Apr-07	May-07	Jun-07	Jul-07	Aug-07
Blue Line	\$245K	\$127K	\$249K	\$230K	\$60K	\$228K	\$241K	\$216K	\$236K	\$109K	\$177K	\$209K
Red Line	\$352K	\$256K	\$231K	\$258K	\$160K	\$178K	\$236K	\$252K	\$595K	\$227K	\$180K	\$147K
Green Line	\$238K	\$125K	\$139K	\$141K	\$124K	\$136K	\$139K	\$308K	\$117K	\$164K	\$143K	\$181K
Gold Line	\$90K	\$70K	\$113K	\$63K	\$156K	\$52K	\$76K	\$58K	\$65K	\$121K	\$91K	\$100K
Totals	\$925K	\$925K	\$663K	\$731K	\$499K	\$594K	\$693K	\$835K	\$1,015K	\$620K	\$591K	\$638K

**Material Costs**



**Labor Costs**



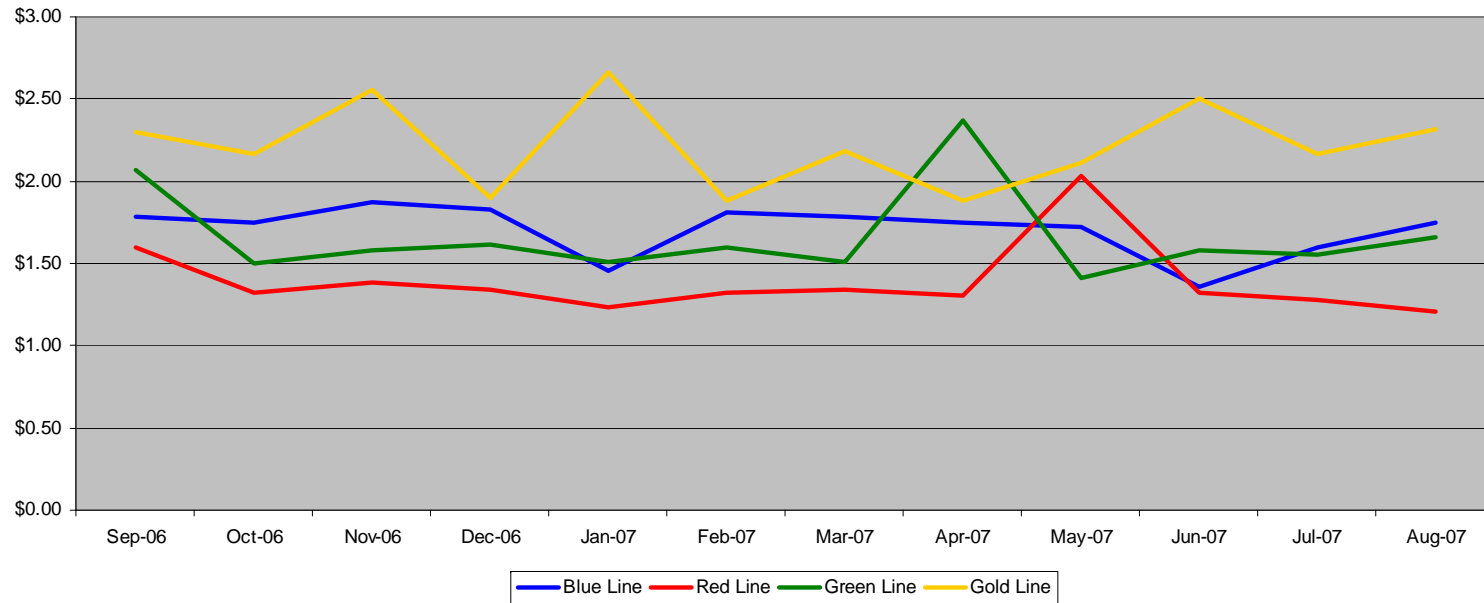
Labor Costs	Sep-06	Oct-06	Nov-06	Dec-06	Jan-07	Feb-07	Mar-07	Apr-07	May-07	Jun-07	Jul-07	Aug-07
Blue Line	\$454K	\$498K	\$494K	\$500K	\$537K	\$446K	\$502K	\$482K	\$475K	\$427K	\$476K	\$532K
Red Line	\$507K	\$482K	\$517K	\$475K	\$542K	\$483K	\$526K	\$450K	\$548K	\$485K	\$523K	\$527K
Green Line	\$197K	\$207K	\$200K	\$204K	\$215K	\$178K	\$201K	\$190K	\$194K	\$177K	\$196K	\$204K
Gold Line	\$200K	\$208K	\$221K	\$192K	\$218K	\$182K	\$227K	\$194K	\$211K	\$196K	\$202K	\$214K
Totals	\$1,357K	\$1,394K	\$1,431K	\$1,372K	\$1,512K	\$1,289K	\$1,455K	\$1,315K	\$1,427K	\$1,286K	\$1,397K	\$1,477K



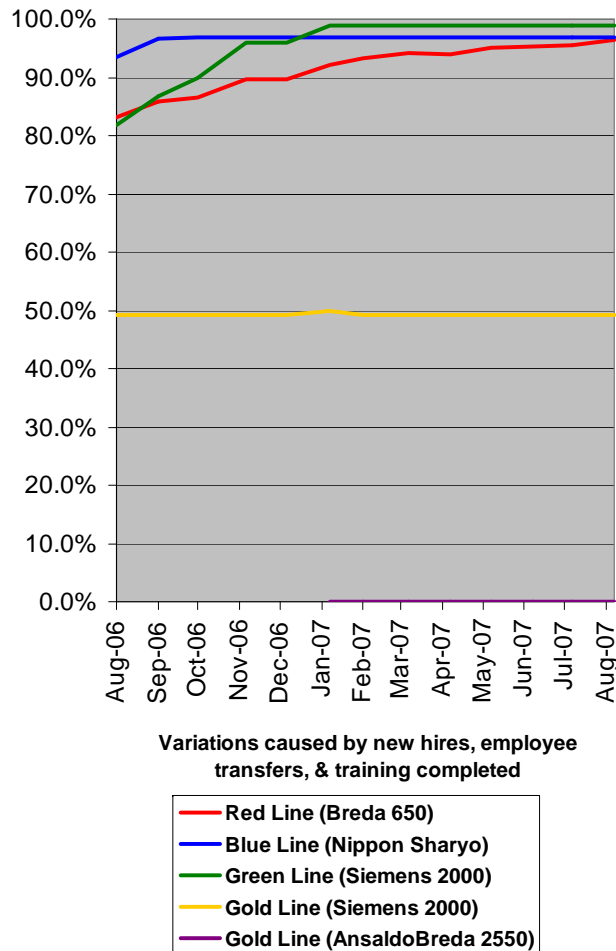
**Metro**

# Cost Per Mile

Cost per mile:	Sep-06	Oct-06	Nov-06	Dec-06	Jan-07	Feb-07	Mar-07	Apr-07	May-07	Jun-07	Jul-07	Aug-07	Average
Blue Line	\$1.78	\$1.75	\$1.87	\$1.83	\$1.45	\$1.81	\$1.79	\$1.75	\$1.72	\$1.36	\$1.60	\$1.75	\$1.70
Red Line	\$1.59	\$1.32	\$1.38	\$1.34	\$1.24	\$1.32	\$1.34	\$1.30	\$2.04	\$1.32	\$1.28	\$1.20	\$1.39
Green Line	\$2.06	\$1.50	\$1.58	\$1.62	\$1.51	\$1.60	\$1.51	\$2.37	\$1.41	\$1.58	\$1.55	\$1.66	\$1.66
Gold Line	\$2.30	\$2.17	\$2.55	\$1.90	\$2.66	\$1.88	\$2.18	\$1.88	\$2.11	\$2.51	\$2.17	\$2.32	\$2.22



# Rail Fleet Services Training – August 2007



Description	Status	Start	End	Training Hours	Student Count	Total Training Hours
<b>Blue Line Instruction (Nippon Sharyo 865 &amp; 2020):</b>						
Total Blue Line Training (Hours):						0
<b>Red Line Instruction (Breda 650 &amp; Option Cars):</b>						
RFS SIMMONS WHEEL TRUE	Complete	7/30/2007	8/3/2007	24	4	96
RFS BRED A 650 TRUCKS	Complete	8/24/2007	8/30/2007	24	2	48
RFS BRED A 650 CAR BODY	Complete	8/23/2007	8/23/2007	8	2	16
RFS BRED A 650 GRS A.T.P.	Complete	8/7/2007	8/17/2007	56	2	112
RFS BRED A 650 F.B. ELECTRONICS	Complete	7/31/2007	8/3/2007	24	2	48
Total Red Line Training (Hours):						320
<b>Green Line Instruction (Siemens 2000):</b>						
Total Green Line Training (Hours):						0
<b>Gold Line Instruction (Siemens 2000):</b>						
ETD COMMUNICATING ONE-ON-ONE	Complete	8/15/2007	8/15/2007	3	1	3
Total Gold Line Training (Hours):						3
<b>New Maintenance Specialist Training:</b>						
Total New Employee Training (Hours):						0
<b>Management/Supervision Training</b>						
EFFECTIVE MEETINGS	Complete	8/21/2007	8/21/2007	3	3	9
P-CARD TRAINING FOR CARD HOLDERS AND AOS	Complete	8/16/2007	8/16/2007	2	1	2
ETD EFFECTIVE TIME MANAGEMENT	Complete	8/29/2007	8/29/2007	3	2	6
RFS BRED A 650 TRUCKS	Complete	8/24/2007	8/30/2007	24	1	24
RFS BRED A 650 CURRENT COLLECT	Complete	8/29/2007	8/29/2007	8	1	8
RFS BRED A 650 CAR BODY	Complete	8/23/2007	8/23/2007	8	1	8
RFS BRED A 650 GRS A.T.P.	Complete	8/7/2007	8/17/2007	56	1	56
RFS BRED A 650 F.B. ELECTRONICS	Complete	7/31/2007	8/3/2007	24	1	24
Total Management Training (Hours):						137
Total Rail Fleet Services Instruction for the month of August 2007 (Hours):						460.0

## Core Vehicle Training Completed

	BLUE	RED	GOLD	GREEN
Percentage of core vehicle training complete:	96.8%	96.5%	49.3%	98.8%

Average Specialist Rail Experience Level in Years: 8.6 6.9 5.3 7.6

