



# **Rail Fleet Services Monthly Report December 2007**



**Metro**

# Table of Contents

• Safety	
– Industrial Injuries	Page 3
– Rail Vehicle Accidents & Major Incidents	Page 4
• Customer Service	
– Service Delivery – AM/PM Pull-Outs	Page 5
– Mean Miles Between Failures (Major)	Page 6
• Business Processes	
– Incident Problems & Locations	
Blue & Red Lines	Page 7
– Incident Problems & Locations	
Green & Gold Lines	Page 8
– Preventative Maintenance Compliance	Page 9
• Finance	
– Vandalism & Graffiti Costs	Page 10
– Material & Labor Costs	Page 11
– Cost per mile	Page 12
• Growth	
– Rail Fleet Service Training	Page 13

# Industrial Injuries – Lost Work Hours

	Jan-07	Feb-07	Mar-07	Apr-07	May-07	Jun-07	Jul-07	Aug-07	Sep-07	Oct-07	Nov-07	Dec-07	Year-to-Date
Blue Line	184	120	144	120	21	0	0	72	48	168	168	133	1,178
Red Line	0	152	224	336	304	200	264	272	168	184	96	0	2,200
Green Line	176	64	0	0	0	0	0	0	0	2	0	0	242
Gold Line	376	320	216	264	288	392	264	368	328	80	160	176	3,232
Totals	736	656	584	720	613	592	528	712	544	434	424	309	6,852

## December 2007 Lost Work Hours

Blue Line – 111 Assigned Employees (108 Active)

- Service Attendant – 133 hours

Red Line – 104 Assigned Employees (101 Active)

Green Line – 45 Assigned Employees (43 Active)

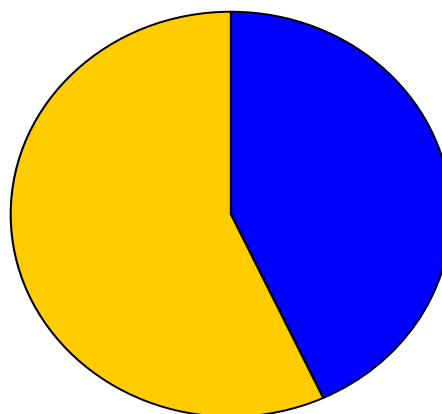
Gold Line – 50 Assigned Employees (49 Active)

- Service Attendant – 176 hours

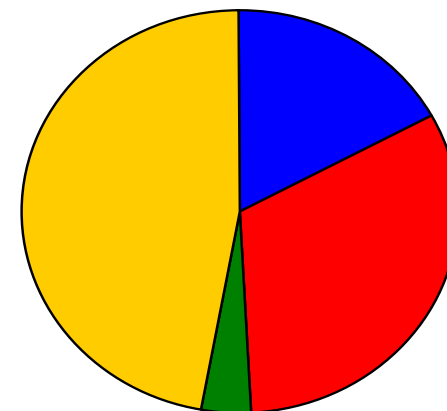
Total Lost Work Hours for Dec 2007 – 309 hours

Total Lost Work Hours for Year-to-Date- 6,852 Hours

## December 2007



## Year-to-Date



■ Blue Line ■ Red Line ■ Green Line ■ Gold Line

# Rail Vehicle Accidents & Major Incidents

	Jan-07	Feb-07	Mar-07	Apr-07	May-07	Jun-07	Jul-07	Aug-07	Sep-07	Oct-07	Nov-07	Dec-07
Blue Line	\$1,236	\$1,027	\$1,485	\$6,869	\$57	\$9,551	\$4,652	\$67,854	\$7,532	\$0	\$4,661	\$4,489
Red Line	\$0	\$0	\$0	\$0	\$0	\$0	\$0	\$0	\$0	\$0	\$203	\$0
Green Line	\$0	\$0	\$0	\$0	\$0	\$0	\$0	\$0	\$0	\$0	\$6,036	\$0
Gold Line	\$0	\$0	\$0	\$0	\$0	\$0	\$0	\$0	\$33,925	\$34,189	\$0	\$326
Totals	\$1,236	\$1,027	\$1,485	\$6,869	\$57	\$9,551	\$4,652	67,854	\$41,457	\$34,189	\$10,900	\$4,489

## December 2007 Rail Vehicle Accidents & Major Incidents

### Blue Line

- Dec. 12, Train vs. Ped at PedX at Compton Station (\$126)
- Dec. 23, Train vs. Pedestrian at South of Pico Station (\$189)
- Dec. 27, Train vs. Ped at GradeX in Wardlow Road Crossing(\$534)
- Dec. 28, Train vs. Auto at Long Beach Blvd & 16<sup>th</sup> Street (\$3,640)

### Red Line

- Dec. 30, Passenger Chasing Train at North Hollywood Station (No Damage)

### Gold Line

- Sept. 21, Train vs. Auto with fire, Ave. 50, Los Angeles, Car 243, project on hold awaiting structural analysis and estimate from OEM (Siemens) December Cost (\$326)



Sept. 21, 2007 Gold Line, Car 243

Individual accident repair costs are not available until after the repairs have been completed. The monthly accident charges listed above only represent only the expenses incurred in that particular month and are not a total repair of an individual accident.

# Service Delivery – AM/PM Pull-Outs

## Cars Available for AM/PM Pull-Outs

	Jan-07	Feb-07	Mar-07	Apr-07	May-07	Jun-07	Jul-07	Aug-07	Sep-07	Oct-07	Nov-07	Dec-07
<b>Blue Line</b>	100%	100%	100%	100%	100%	100%	100%	100%	100%	100%	99%	100%
<b>Red Line</b>	100%	100%	100%	100%	100%	100%	100%	100%	100%	100%	100%	100%
<b>Green Line</b>	100%	100%	100%	100%	100%	100%	100%	100%	100%	100%	100%	100%
<b>Gold Line</b>	100%	100%	100%	100%	100%	100%	100%	100%	100%	100%	100%	100%

### Blue Line – Fleet Size 69 cars

- Weekday pull-out: 60 cars
- Weekend pull-out: 36 cars
- **Monthly Mileage: 402,791 miles**

### Red Line - Fleet Size 104 cars

- Weekday pull-out: 70 cars
- Weekend pull-out: 48 cars
- **Monthly Mileage: 547,868 miles**

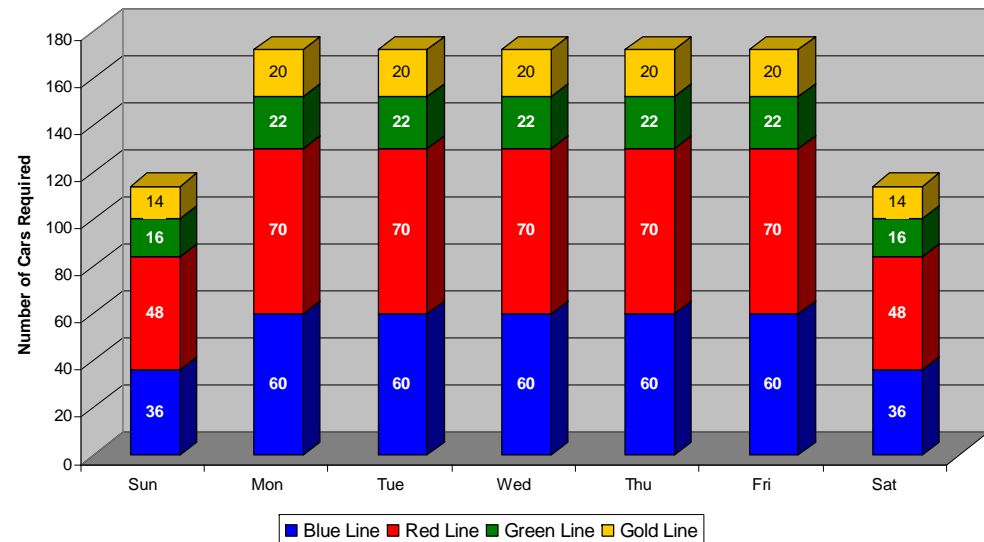
### Green Line – Fleet Size 28 cars

- Weekday pull-out: 22 cars
- Weekend pull-out: 16 cars
- **Monthly Mileage: 215,128 miles**

### Gold Line – Fleet Size 24 cars

- Weekday pull-out: 20 cars
- Weekend pull-out: 14 cars
- **Monthly Mileage: 138,312 miles**

## AM/PM Pull-Out Requirements



# Mean Miles Between Failures (Major)

December 2007

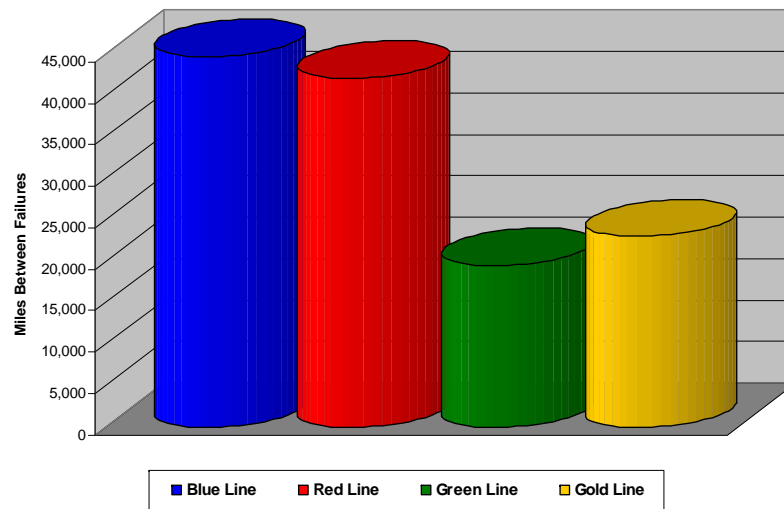
## FTA Major Failures

Blue Line: 44,755 miles (9 FTA Major Failures)

Red Line: 42,144 miles (13 FTA Major Failures)

Green Line: 19,557 miles (11 FTA Major Failures)

Gold Line: 23,052 miles (6 FTA Major Failures)



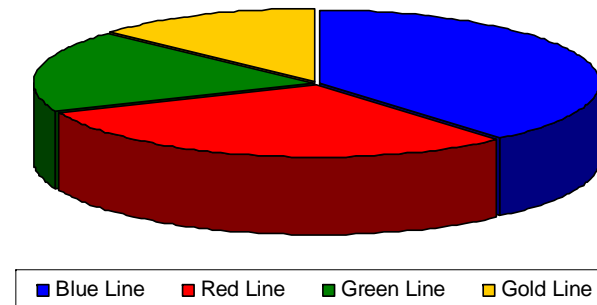
## Repeat Failures

Blue Line: 21 Repeat Failures

Red Line: 16 Repeat Failures

Green Line: 10 Repeat Failures

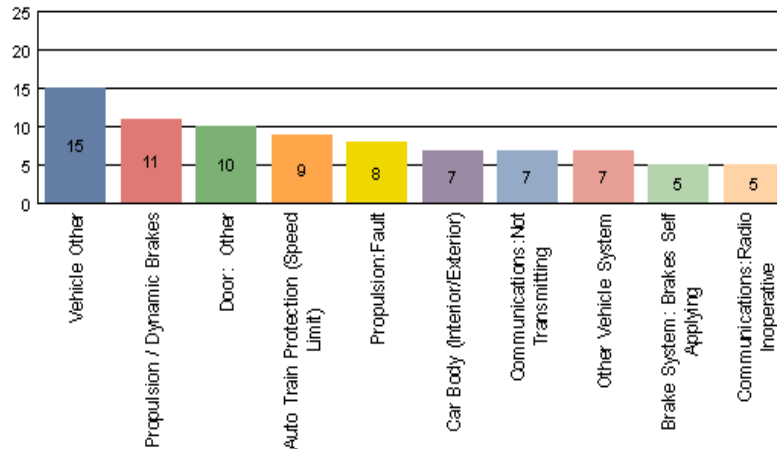
Gold Line: 7 Repeat Failures



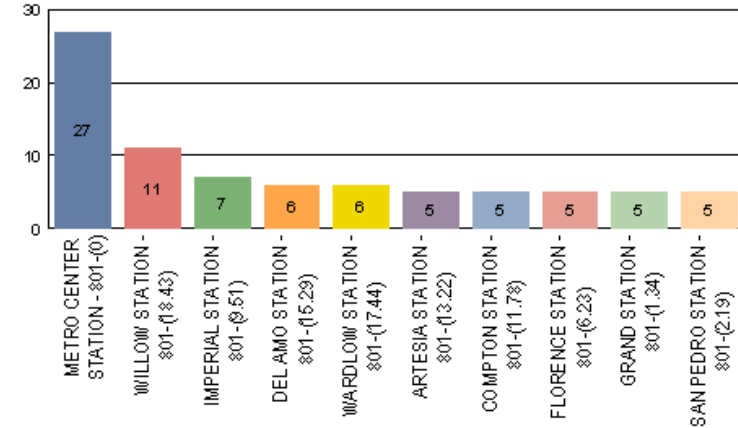
# Incident Problems & Locations – Blue & Red Lines

## Blue Line – December 2007

Count of the Top 10 Incident Problems

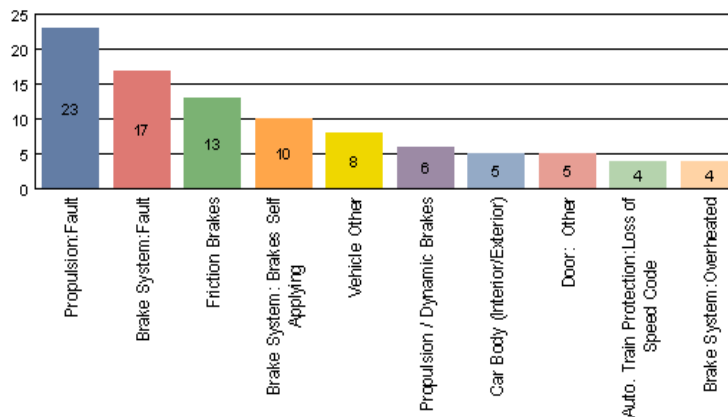


Count of the Top 10 Incident Locations

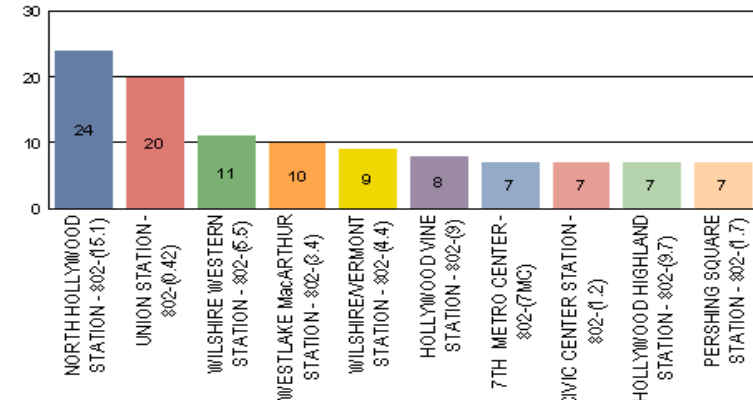


## Red Line – December 2007

Count of the Top 10 Incident Problems



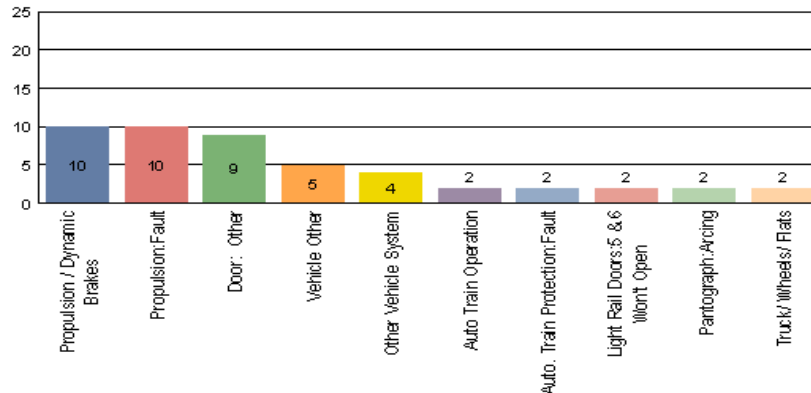
Count of the Top 10 Incident Locations



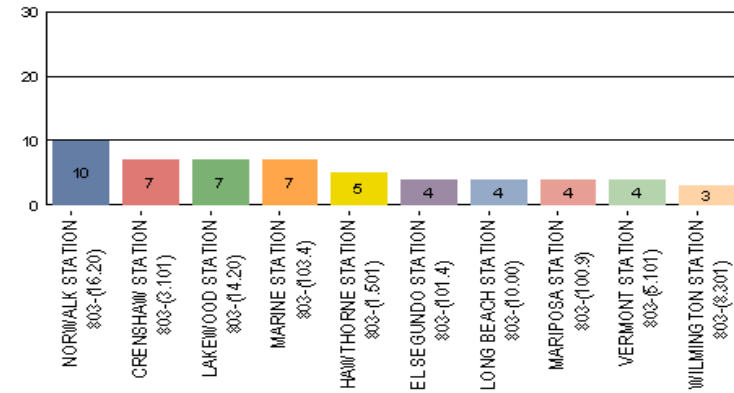
# Incident Problems & Locations – Green & Gold Lines

## Green Line - December 2007

**Count of the Top 10 Incident Problems**

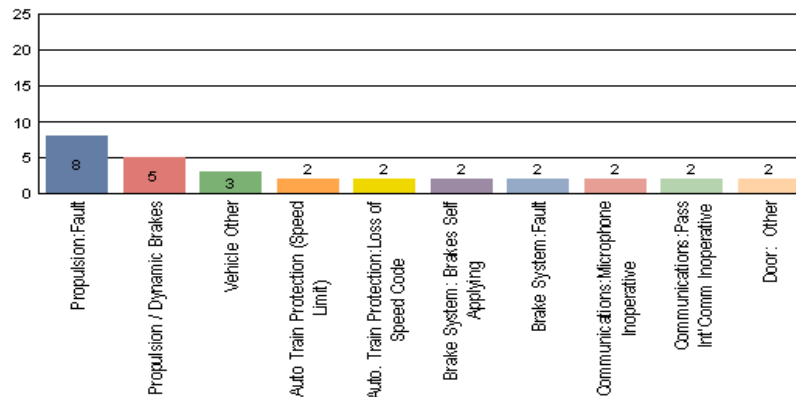


**Count of the Top 10 Incident Locations**

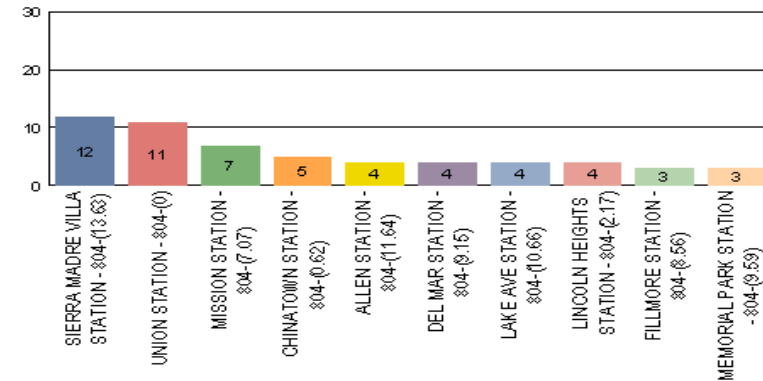


## Gold Line - December 2007

**Count of the Top 10 Incident Problems**



**Count of the Top 10 Incident Locations**





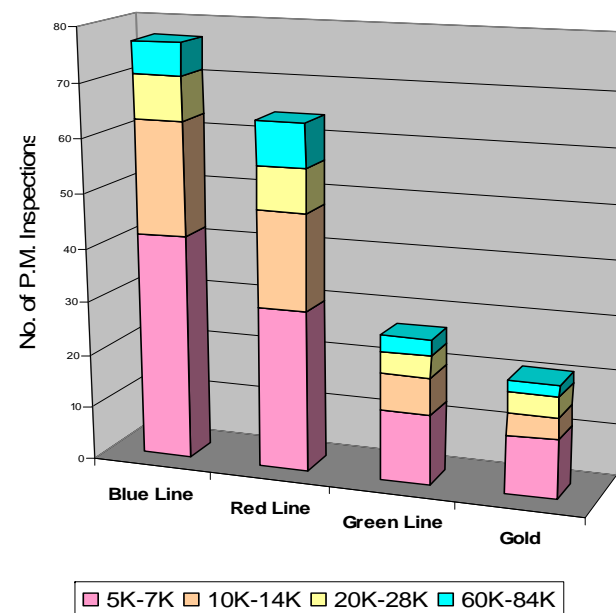
# Preventative Maintenance Compliance

	Jan-07	Feb-07	Mar-07	Apr-07	May-07	Jun-07	Jul-07	Aug-07	Sep-07	Oct-07	Nov-07	Dec-07
Blue Line	100%	100%	100%	100%	100%	100%	100%	100%	100%	100%	100%	100%
Red Line	100%	100%	100%	97%	100%	100%	100%	100%	100%	100%	100%	99%
Green Line	100%	100%	100%	100%	100%	100%	100%	100%	100%	100%	100%	100%
Gold Line	100%	100%	100%	100%	100%	100%	100%	100%	100%	100%	100%	100%

## December 2007 Preventative Maintenance Inspections

No. of P.M. Inspections	5K	10K	20K	60K	Totals
Blue Line	42	21	8	6	77

No. of P.M. Inspections	7K	14K	28K	84K	Totals
Red Line	30	18	8	8	64
Green Line	13	7	4	3	27
Gold Line	11	4	4	2	21



# Vandalism & Graffiti Report

	Jan-07	Feb-07	Mar-07	Apr-07	May-07	Jun-07	Jul-07	Aug-07	Sep-07	Oct-07	Nov-07	Dec-07	Year To Date
Blue Line	\$62,198	\$72,185	\$56,911	\$36,165	\$22,571	\$33,340	\$41,364	\$41,364	\$54,873	\$68,406	\$78,067	\$84,209	\$652K
Red Line	\$17,487	\$16,387	\$11,893	\$12,098	\$17,357	\$21,464	\$11,906	\$11,906	\$11,645	\$9,355	\$15,156	\$13,231	\$170K
Green Line	\$33,319	\$32,943	\$26,026	\$29,903	\$25,863	\$28,478	\$32,716	\$33,547	\$44,227	\$33,832	\$37,022	\$37,495	\$395K
Gold Line	\$8,799	\$6,158	\$3,522	\$4,094	\$9,778	\$4,347	\$4,840	\$5,992	\$4,980	\$4,980	\$6,416	\$11,638	\$72K
Totals	\$121,803	\$127,673	\$98,352	\$82,260	\$75,569	\$87,629	\$90,826	\$92,809	\$115,725	\$113,442	\$136,661	\$146,573	\$1.3M

## December 2007 Vandalism & Graffiti

Windows replaced: 112 @ \$11,656

Vandal Shields replaced: 625 @ \$9,733

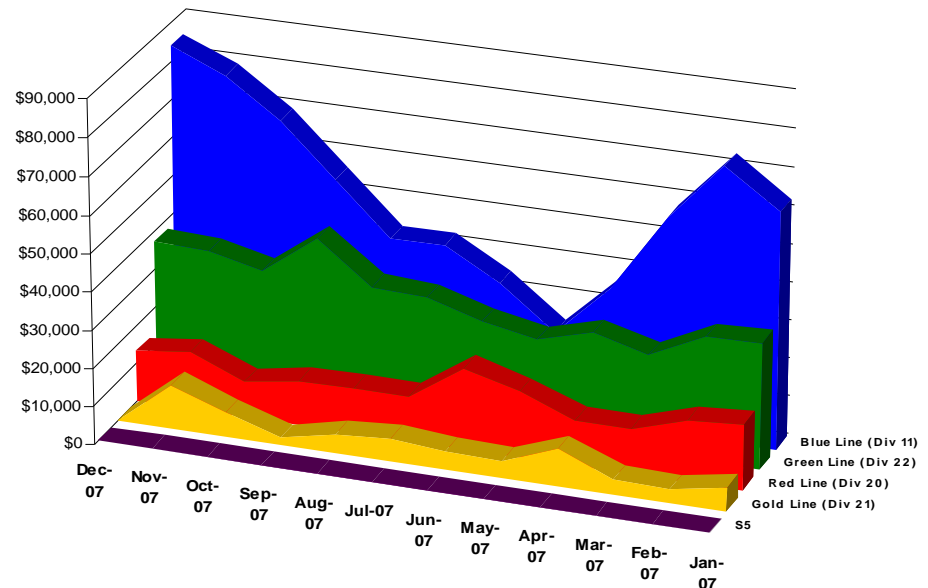
Seats cleaned: 5,811

Seats replaced: 76 @ \$3,500

Ext./Int. repairs: 30 cars @ \$4,447

Labor = \$117,237

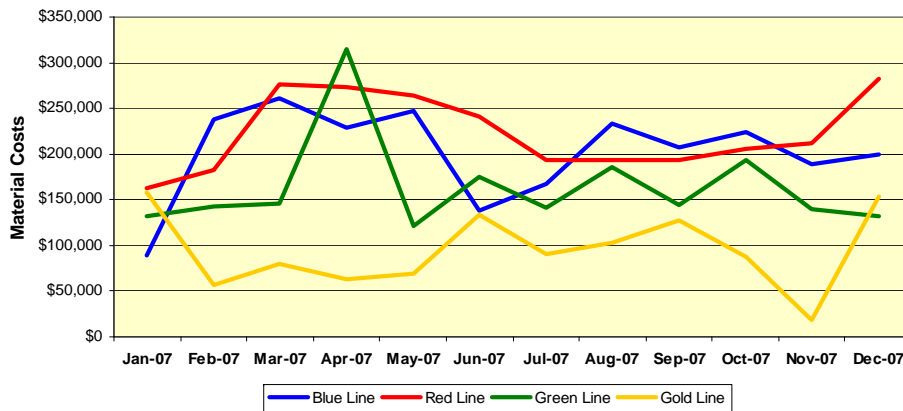
Total for December 2007: \$146,573



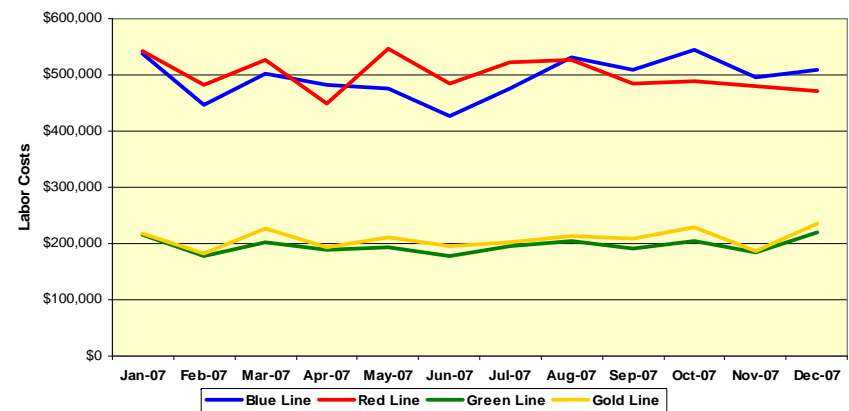
# Material and Labor Costs

Material Costs	Jan-07	Feb-07	Mar-07	Apr-07	May-07	Jun-07	Jul-07	Aug-07	Sep-07	Oct-07	Nov-07	Dec--07
Blue Line	\$60K	\$228K	\$241K	\$216K	\$236K	\$109K	\$177K	\$209K	\$176K	\$224K	\$189K	\$200K
Red Line	\$160K	\$178K	\$236K	\$252K	\$595K	\$227K	\$180K	\$147K	\$209K	\$205K	\$212K	\$283K
Green Line	\$124K	\$136K	\$139K	\$308K	\$117K	\$164K	\$143K	\$181K	\$139K	\$193K	\$139K	\$132K
Gold Line	\$156K	\$52K	\$76K	\$58K	\$65K	\$121K	\$91K	\$100K	\$119K	\$88K	\$19K	\$153K
Totals	\$499K	\$594K	\$693K	\$835K	\$1,015K	\$620K	\$591K	\$638K	\$643K	\$710K	\$559K	\$768K

**Material Costs**



**Labor Costs**

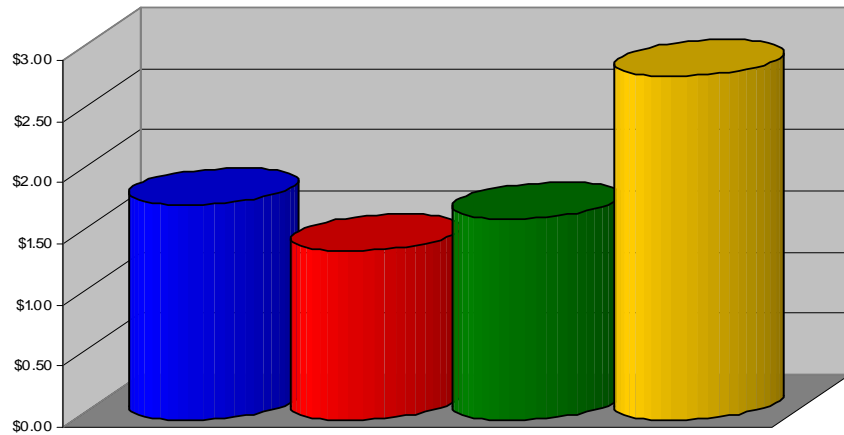


Labor Costs	Jan-07	Feb-07	Mar-07	Apr-07	May-07	Jun-07	Jul-07	Aug-07	Sep-07	Oct-07	Nov-07	Dec-07
Blue Line	\$537K	\$446K	\$502K	\$482K	\$475K	\$427K	\$476K	\$532K	\$508K	\$545K	\$496K	\$508K
Red Line	\$542K	\$483K	\$526K	\$450K	\$548K	\$485K	\$523K	\$527K	\$485K	\$489K	\$479K	\$471K
Green Line	\$215K	\$178K	\$201K	\$190K	\$194K	\$177K	\$196K	\$204K	\$190K	\$204K	\$185K	\$220K
Gold Line	\$218K	\$182K	\$227K	\$194K	\$211K	\$196K	\$202K	\$214K	\$208K	\$229K	\$186K	\$235K
Totals	\$1,512K	\$1,289K	\$1,455K	\$1,315K	\$1,427K	\$1,286K	\$1,397K	\$1,477K	\$1,392K	\$1,466K	\$1,346K	\$1,434K

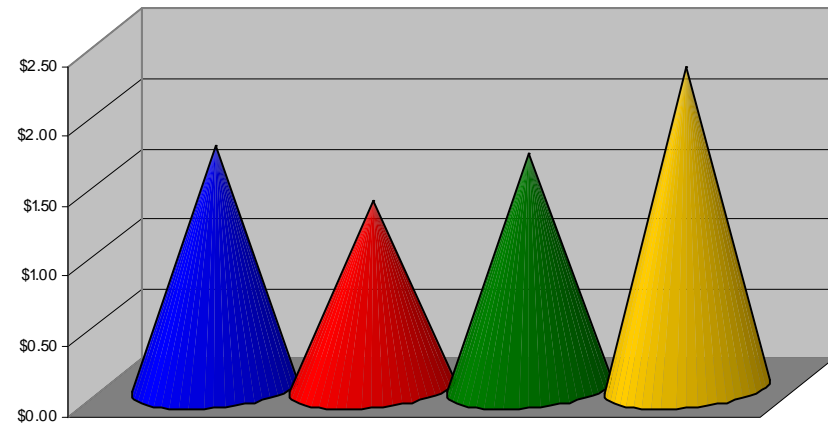
# Cost Per Mile

Cost per mile:	Jan-07	Feb-07	Mar-07	Apr-07	May-07	Jun-07	Jul-07	Aug-07	Sep-07	Oct-07	Nov-07	Dec-07	Average
Blue Line	\$1.61	\$1.62	\$1.86	\$1.69	\$1.80	\$1.31	\$1.52	\$1.94	\$1.82	\$1.82	\$1.72	\$1.76	\$1.73
Red Line	\$1.40	\$1.16	\$1.41	\$1.25	\$2.12	\$1.29	\$1.28	\$1.38	\$1.30	\$1.23	\$1.28	\$1.38	\$1.33
Green Line	\$1.73	\$1.39	\$1.62	\$2.26	\$1.44	\$1.56	\$1.45	\$1.89	\$1.62	\$1.77	\$1.53	\$1.64	\$1.69
Gold Line	\$3.00	\$1.69	\$2.26	\$1.93	\$2.19	\$2.34	\$2.16	\$2.45	\$2.60	\$2.25	\$1.52	\$2.81	\$2.21

December 2007

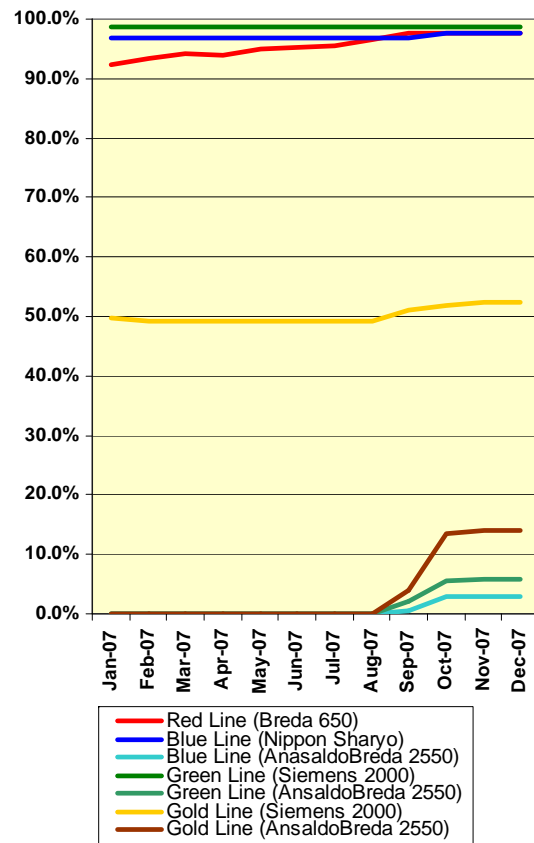


12-Months Average



■ Blue Line
 ■ Red Line
 ■ Green Line
 ■ Gold Line

# Rail Fleet Services Instruction – December 2007



Description	Status	Start	End	Course Hours	Student Count	Training Hours
<b><u>Nippon Sharyo 865/2020 LRV Instruction:</u></b>						
Total Nippon Sharyo 865 LRV Training (Hours):						0
<b><u>Breda A650 HRV Instruction:</u></b>						
RFS BRED A 650 R.T.O.S. TROUBLESHOOTING	Completed	12/6/2007	12/21/2007	4	31	124
Total Breda 650 HRV Training (Hours):						124
<b><u>Siemens 2000 Instruction:</u></b>						
Total Siemens 2000 LRV Training (Hours):						0
<b><u>AnsaldoBreda 2550 LRV Instruction:</u></b>						
Total AnsaldoBreda 2550 LRV Line Training (Hours):						0
<b><u>New Maintenance Specialist Training:</u></b>						
Total New Employee Training (Hours):						0
<b><u>Miscellaneous Training Classes</u></b>						
RFS UNIMOG HIGH-RAIL TRUCK	Complete	12/1/2007	12/10/2007	4	10	40
FIRST TIME SUPERVISION	Complete	12/13/2007	12/13/2007	10	1	10
ETD WRITING WHEN ENGLISH IS A SECOND LANGUAGE	Complete	12/19/2007	12/19/2007	3	1	3
MOP MANAGING LEAVES OF ABSENCE	Complete	12/12/2007	12/12/2007	3	2	6
MOP LEGAL DEVELOPMENT AND ETHICS	Complete	12/4/2007	12/4/2007	3	2	6
MOP TITLE VII AND SEXUAL HARASSMENT PREVENTION	Complete	12/6/2007	12/6/2007	2	6	12
BEGINNING MICROSOFT WORD 2003	Complete	12/11/2007	12/11/2007	4	2	8
P-CARD TRAINING FOR CARD HOLDERS AND AOS	Complete	12/11/2007	12/11/2007	2	1	2
Total Management Training (Hours):						87
Total Rail Fleet Services Instruction for the month of December 2007 (Hours):						211.0

## Core Vehicle Training Completed:

	BLUE	RED	GOLD	GREEN
Percentage of core vehicle training complete:	97.7%	97.6%	52.3%	98.8%
AnsaldoBreda 2550 Training Completed:	2.9%	N/A	14.0%	5.7%

Average Specialist Rail Experience Level in Years: 9.0 7.2 5.8 7.9