



Rail Fleet Services Monthly Report November 2007



Metro

Table of Contents

| | |
|---|---------|
| • Safety | |
| – Industrial Injuries | Page 3 |
| – Rail Vehicle Accidents & Major Incidents | Page 4 |
| • Customer Service | |
| – Service Delivery – AM/PM Pull-Outs | Page 5 |
| – Mean Miles Between Failures (Major) | Page 6 |
| • Business Processes | |
| – Incident Problems & Locations Blue & Red Lines | Page 7 |
| – Incident Problems & Locations Green & Gold Lines | Page 8 |
| – Preventative Maintenance Compliance | Page 9 |
| • Finance | |
| – Vandalism & Graffiti Costs | Page 10 |
| – Material & Labor Costs | Page 11 |
| – Cost per mile | Page 12 |
| • Growth | |
| – Rail Fleet Service Training | Page 13 |

Industrial Injuries – Lost Work Hours

| | Dec-06 | Jan-07 | Feb-07 | Mar-07 | Apr-07 | May-07 | Jun-07 | Jul-07 | Aug-07 | Sep-07 | Oct-07 | Nov-07 |
|------------|--------|--------|--------|--------|--------|--------|--------|--------|--------|--------|--------|--------|
| Blue Line | 168 | 184 | 120 | 144 | 120 | 21 | 0 | 0 | 72 | 48 | 168 | 168 |
| Red Line | 0 | 0 | 152 | 224 | 336 | 304 | 200 | 264 | 272 | 168 | 184 | 96 |
| Green Line | 160 | 176 | 64 | 0 | 0 | 0 | 0 | 0 | 0 | 0 | 2 | 0 |
| Gold Line | 328 | 376 | 320 | 216 | 264 | 288 | 392 | 264 | 368 | 328 | 80 | 160 |
| Totals | 656 | 736 | 656 | 584 | 720 | 613 | 592 | 528 | 712 | 544 | 434 | 424 |

November 2007 Lost Work Hours

Blue Line – 112 Assigned Employees (106 Active)

- Service Attendant – 168 hours

Red Line – 105 Assigned Employees (99 Active)

- Maintenance Specialist – 96 hours

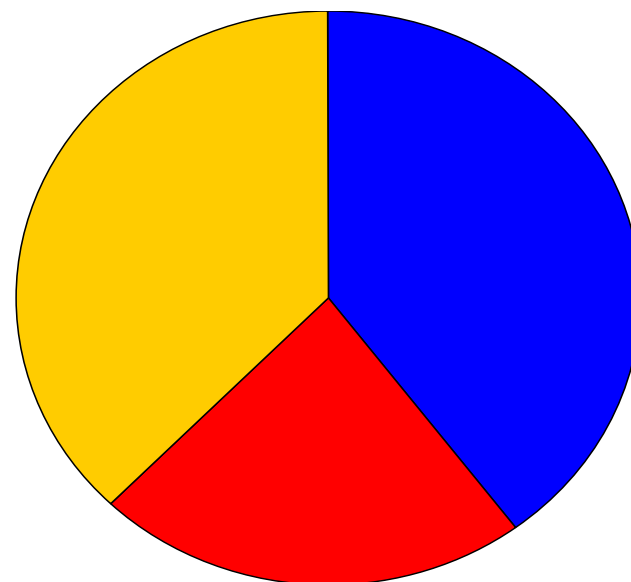
Green Line – 46 Assigned Employees (45 Active)

Gold Line – 50 Assigned Employees (48 Active)

- Service Attendant – 160 hours

Total Lost Work Hours for Nov 2007 – 424 hours

November 2007 Lost Work Hours



■ Blue Line ■ Red Line ■ Green Line ■ Gold Line

Rail Vehicle Accidents & Major Incidents

| | Dec-06 | Jan-07 | Feb-07 | Mar-07 | Apr-07 | May-07 | Jun-07 | Jul-07 | Aug-07 | Sep-07 | Oct-07 | Nov-07 |
|------------|----------|---------|---------|---------|---------|--------|---------|---------|----------|----------|----------|----------|
| Blue Line | \$48,543 | \$1,236 | \$1,027 | \$1,485 | \$6,869 | \$57 | \$9,551 | \$4,652 | \$67,854 | \$7,532 | \$0 | \$4,661 |
| Red Line | \$0 | \$0 | \$0 | \$0 | \$0 | \$0 | \$0 | \$0 | \$0 | \$0 | \$0 | \$203 |
| Green Line | \$0 | \$0 | \$0 | \$0 | \$0 | \$0 | \$0 | \$0 | \$0 | \$0 | \$0 | \$6,036 |
| Gold Line | \$1,765 | \$0 | \$0 | \$0 | \$0 | \$0 | \$0 | \$0 | \$0 | \$33,925 | \$34,189 | \$0 |
| Totals | \$50,308 | \$1,236 | \$1,027 | \$1,485 | \$6,869 | \$57 | \$9,551 | \$4,652 | 67,854 | \$41,457 | \$34,189 | \$10,900 |

November 2007 Rail Vehicle Accidents & Major Incidents

Blue Line

- Nov. 11, Train vs. Auto at the Transit Mall (No damage)
- Nov. 12, Train vs. Auto at Los Angeles St. (\$1,223)
- Nov. 26, Train vs. Pedestrian between Gage and Florence (\$383)
- Nov. 27, Train vs. Pedestrian at Washington and Broadway (\$189)
- Nov. 29, Train vs. Auto at 7th and Long Beach (\$2,866)

Red Line

- Nov. 24, Train vs. Pedestrian at North Hollywood Station (\$203)

Green Line

- Nov. 18, Train vs. Shopping Cart at Hawthorne Station (\$6,036)

Gold Line

- Sept. 21, Train vs. Auto with fire, Ave. 50, Los Angeles, Ca 243, project on hold awaiting structural analysis and estimate from OEM (Siemens)



Sept. 21, 2007 Gold Line, Car 243

Individual accident repair costs are not available until after the repairs have been completed. The monthly accident charges listed above only represent only the expenses incurred in that particular month and are not a total repair of an individual accident.

Service Delivery – AM/PM Pull-Outs

Cars Available for AM/PM Pull-Outs

| | Dec-06 | Jan-07 | Feb-07 | Mar-07 | Apr-07 | May-07 | Jun-07 | Jul-07 | Aug-07 | Sep-07 | Oct-07 | Nov-07 |
|-------------------|--------|--------|--------|--------|--------|--------|--------|--------|--------|--------|--------|--------|
| Blue Line | 100% | 100% | 100% | 100% | 100% | 100% | 100% | 100% | 100% | 100% | 100% | 99% |
| Red Line | 100% | 100% | 100% | 100% | 100% | 100% | 100% | 100% | 100% | 100% | 100% | 100% |
| Green Line | 100% | 100% | 100% | 100% | 100% | 100% | 100% | 100% | 100% | 100% | 100% | 100% |
| Gold Line | 100% | 100% | 100% | 100% | 100% | 100% | 100% | 100% | 100% | 100% | 100% | 100% |

Blue Line – Fleet Size 69 cars

- Weekday pull-out: 60 cars
- Weekend pull-out: 36 cars
- **Monthly Mileage: 398,539 miles**

Red Line - Fleet Size 104 cars

- Weekday pull-out: 70 cars
- Weekend pull-out: 48 cars
- **Monthly Mileage: 542,582 miles**

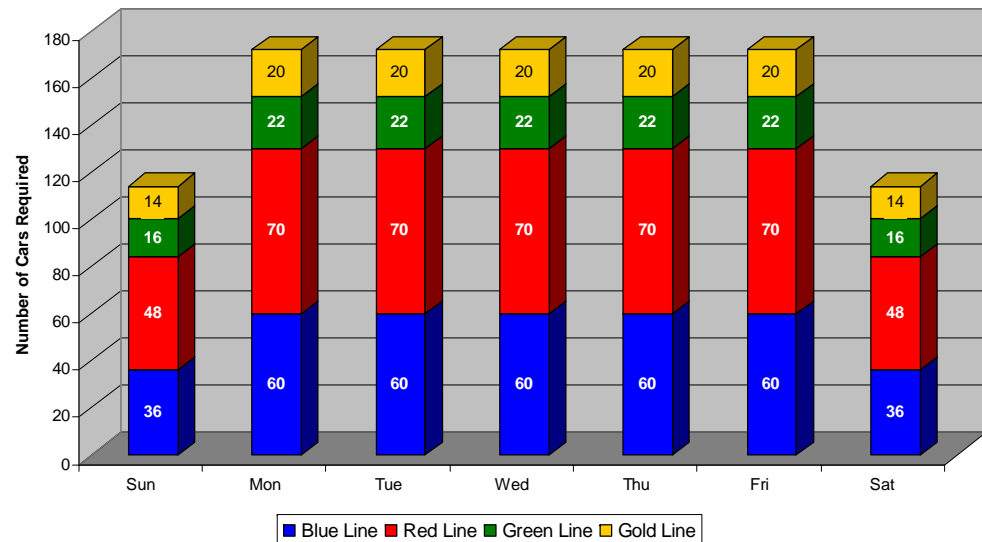
Green Line – Fleet Size 28 cars

- Weekday pull-out: 22 cars
- Weekend pull-out: 16 cars
- **Monthly Mileage: 212,563 miles**

Gold Line – Fleet Size 24 cars

- Weekday pull-out: 20 cars
- Weekend pull-out: 14 cars
- **Monthly Mileage: 134,265 miles**

AM/PM Pull-Out Requirements



Mean Miles Between Failures (Major)

November 2007

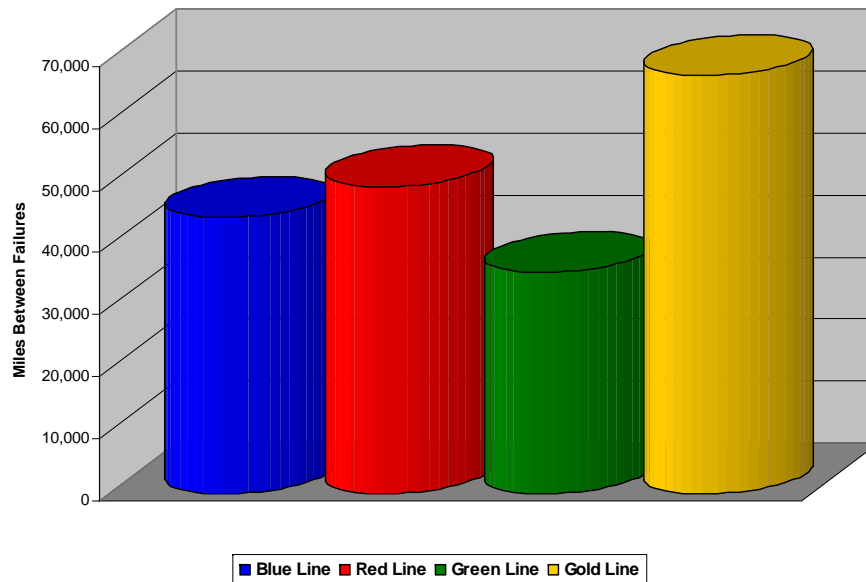
FTA Major Failures

Blue Line: 44,282 miles (9 FTA Major Failures)

Red Line: 49,326 miles (11 FTA Major Failures)

Green Line: 35,427 miles (6 FTA Major Failures)

Gold Line: 67,133 miles (2 FTA Major Failures)



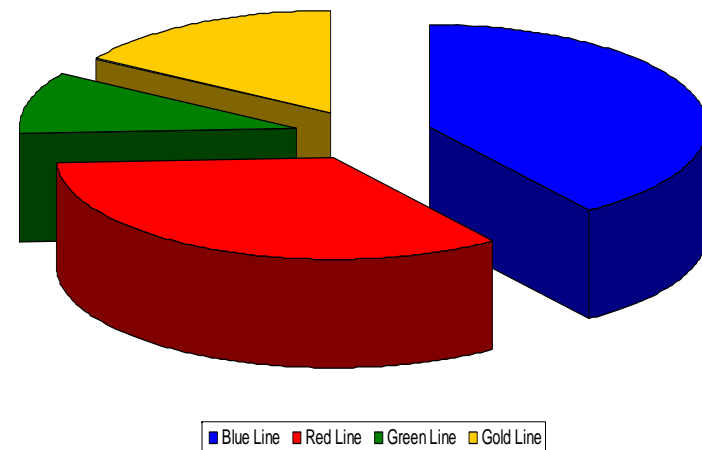
Repeat Failures

Blue Line: 25 Repeat Failures

Red Line: 21 Repeat Failures

Green Line: 6 Repeat Failures

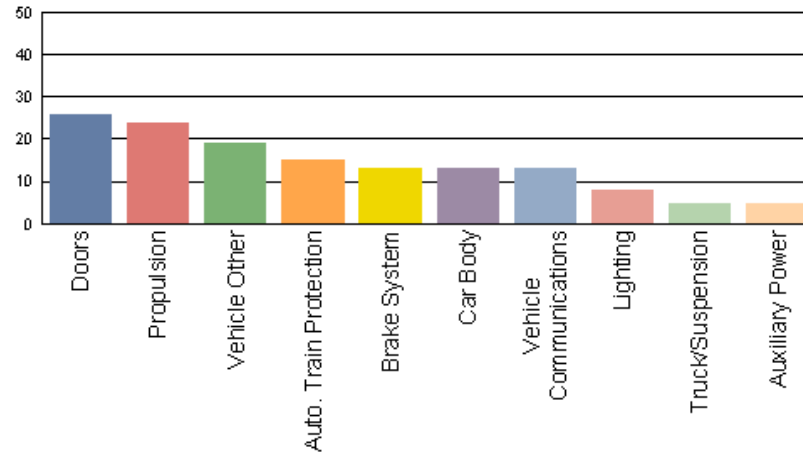
Gold Line: 10 Repeat Failures



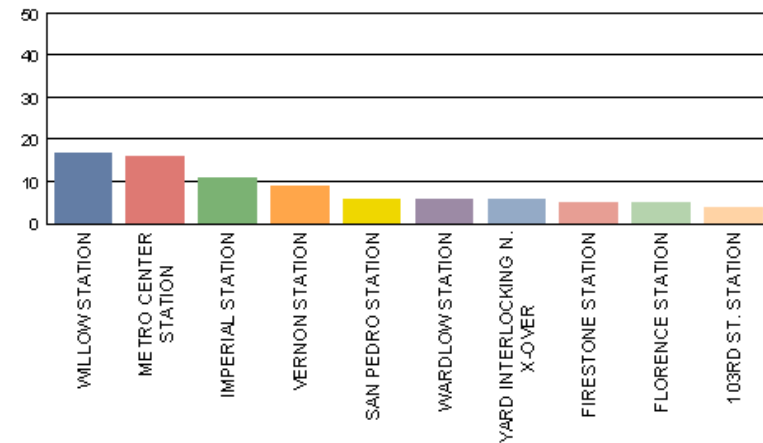
Incident Problems & Locations – Blue & Red Lines

Blue Line – November 2007

Count of Top 10 Incident Problem Codes

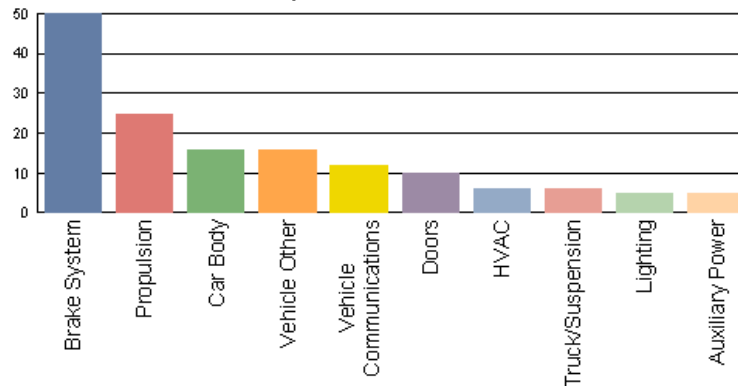


Count of Top 10 Rail Vehicle Incidents by Location

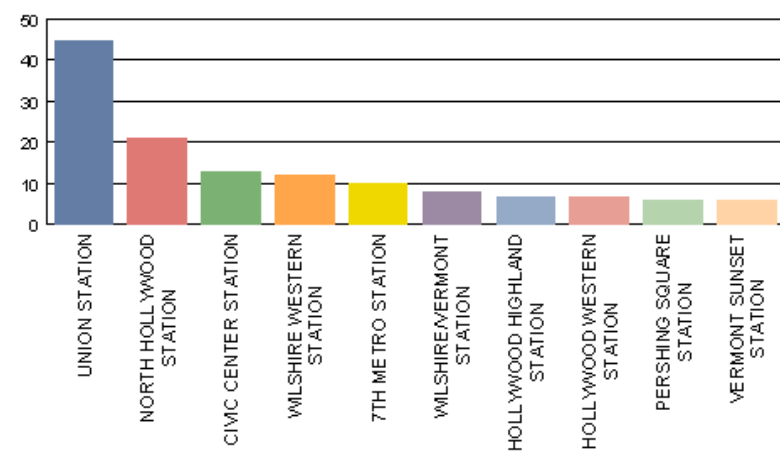


Red Line – November 2007

Count of Top 10 Incident Problem Codes

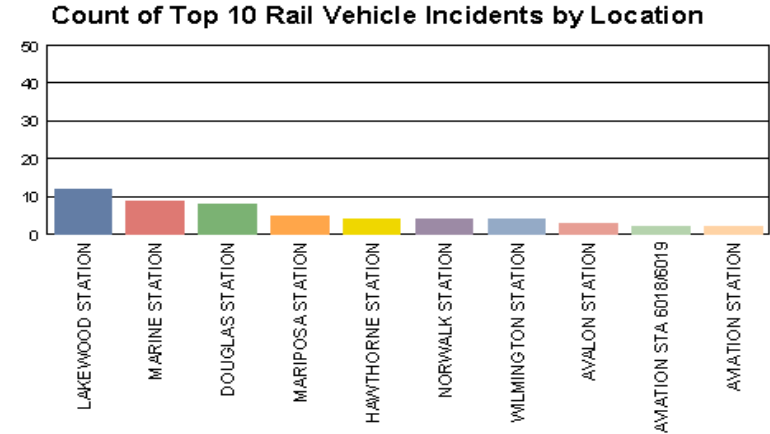
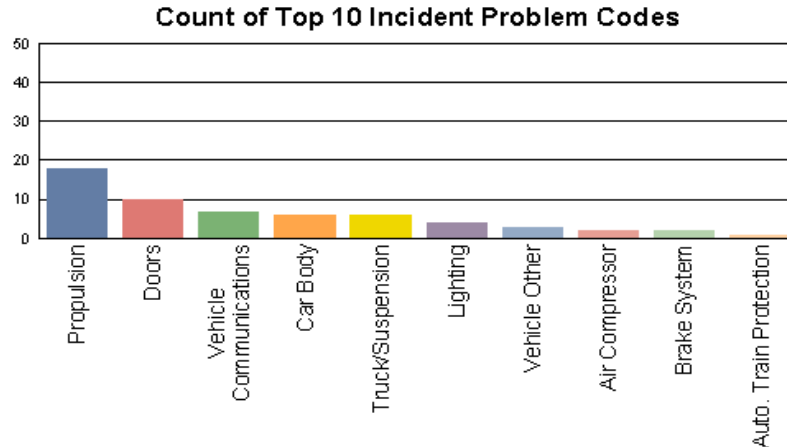


Count of Top 10 Rail Vehicle Incidents by Location

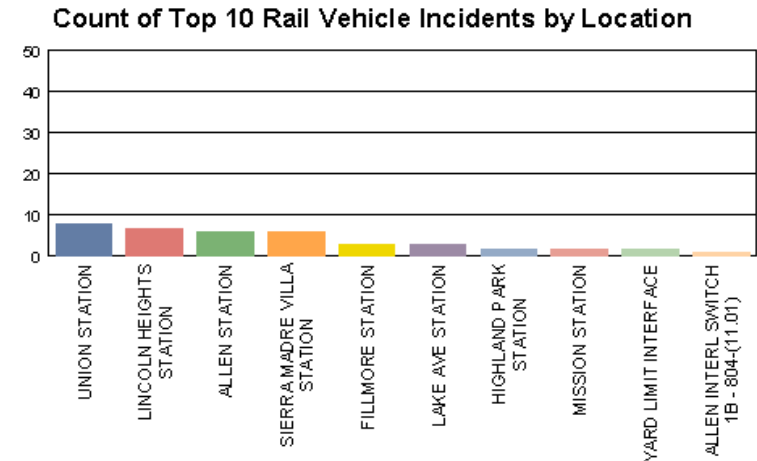
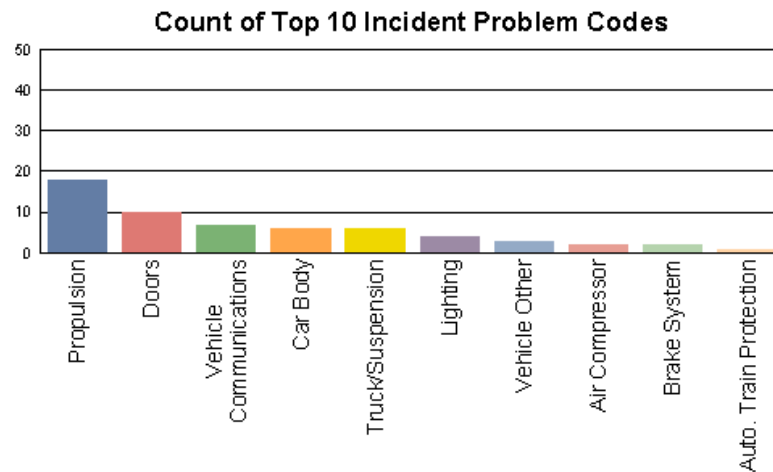


Incident Problems & Locations – Green & Gold Lines

Green Line - November 2007



Gold Line - November 2007



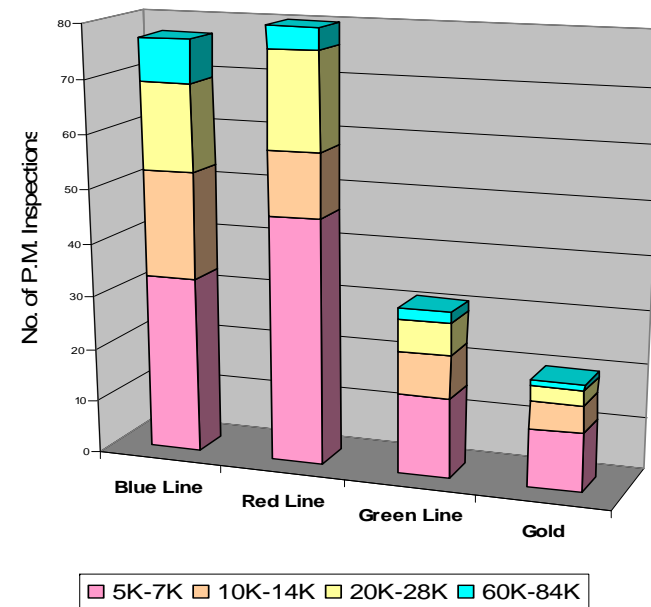
Preventative Maintenance Compliance

| | Dec-06 | Jan-07 | Feb-07 | Mar-07 | Apr-07 | May-07 | Jun-07 | Jul-07 | Aug-07 | Sep-07 | Oct-07 | Nov-07 |
|------------|--------|--------|--------|--------|--------|--------|--------|--------|--------|--------|--------|--------|
| Blue Line | 100% | 100% | 100% | 100% | 100% | 100% | 100% | 100% | 100% | 100% | 100% | 100% |
| Red Line | 100% | 100% | 100% | 100% | 97% | 100% | 100% | 100% | 100% | 100% | 100% | 100% |
| Green Line | 100% | 100% | 100% | 100% | 100% | 100% | 100% | 100% | 100% | 100% | 100% | 100% |
| Gold Line | 100% | 100% | 100% | 100% | 100% | 100% | 100% | 100% | 100% | 100% | 100% | 100% |

November 2007 Preventative Maintenance Inspections

| No. of P.M. Inspections | 5K | 10K | 20K | 60K | Totals |
|-------------------------|----|-----|-----|-----|--------|
| Blue Line | 33 | 20 | 16 | 8 | 77 |

| No. of P.M. Inspections | 7K | 14K | 28K | 84K | Totals |
|-------------------------|----|-----|-----|-----|--------|
| Red Line | 46 | 12 | 18 | 4 | 80 |
| Green Line | 15 | 8 | 6 | 2 | 31 |
| Gold Line | 11 | 5 | 3 | 1 | 20 |



Vandalism & Graffiti Report

| | Dec-06 | Jan-07 | Feb-07 | Mar-07 | Apr-07 | May-07 | Jun-07 | Jul-07 | Aug-07 | Sep-07 | Oct-07 | Nov-07 |
|------------|-----------|-----------|-----------|----------|----------|----------|----------|----------|----------|-----------|-----------|-----------|
| Blue Line | \$71,482 | \$62,198 | \$72,185 | \$56,911 | \$36,165 | \$22,571 | \$33,340 | \$41,364 | \$41,364 | \$54,873 | \$68,406 | \$78,067 |
| Red Line | \$35,928 | \$17,487 | \$16,387 | \$11,893 | \$12,098 | \$17,357 | \$21,464 | \$11,906 | \$11,906 | \$11,645 | \$9,355 | \$15,156 |
| Green Line | \$14,351 | \$33,319 | \$32,943 | \$26,026 | \$29,903 | \$25,863 | \$28,478 | \$32,716 | \$33,547 | \$44,227 | \$33,832 | \$37,022 |
| Gold Line | \$11,735 | \$8,799 | \$6,158 | \$3,522 | \$4,094 | \$9,778 | \$4,347 | \$4,840 | \$5,992 | \$4,980 | \$4,980 | \$6,416 |
| Totals | \$133,496 | \$121,803 | \$127,673 | \$98,352 | \$82,260 | \$75,569 | \$87,629 | \$90,826 | \$92,809 | \$115,725 | \$113,442 | \$136,661 |

November 07 Vandalism & Graffiti

Windows replaced: 130 @ \$14,298

Vandal Shields replaced: 595 @ \$9,712

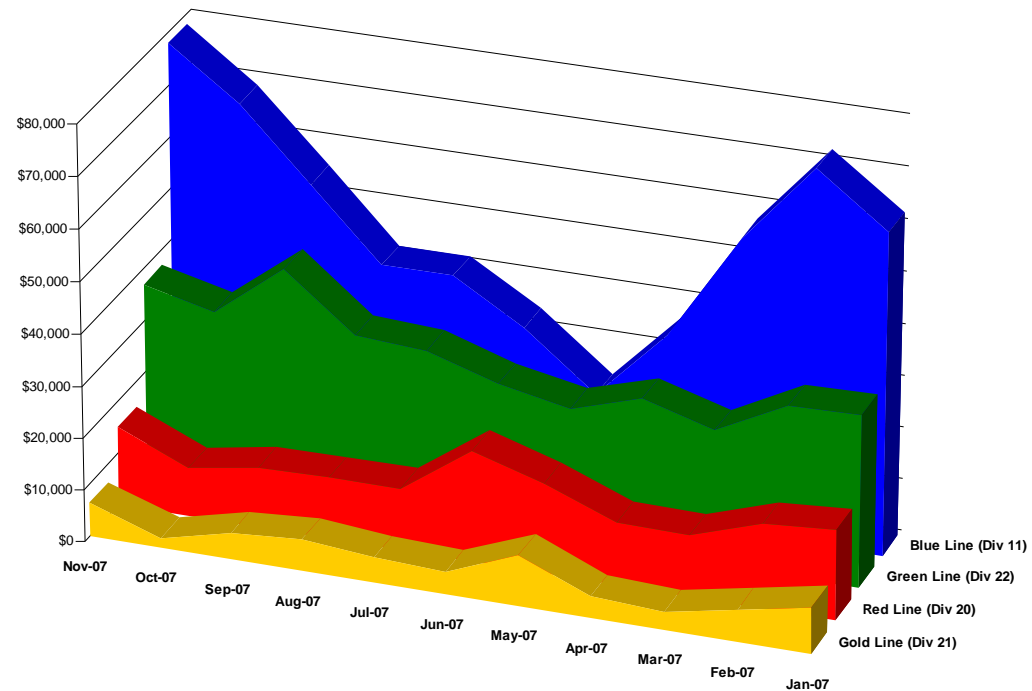
Seats cleaned: 6,858

Seats replaced: 83 @ \$4,314

Ext./Int. repairs: 22 cars @ \$3,975

Labor = \$104,361

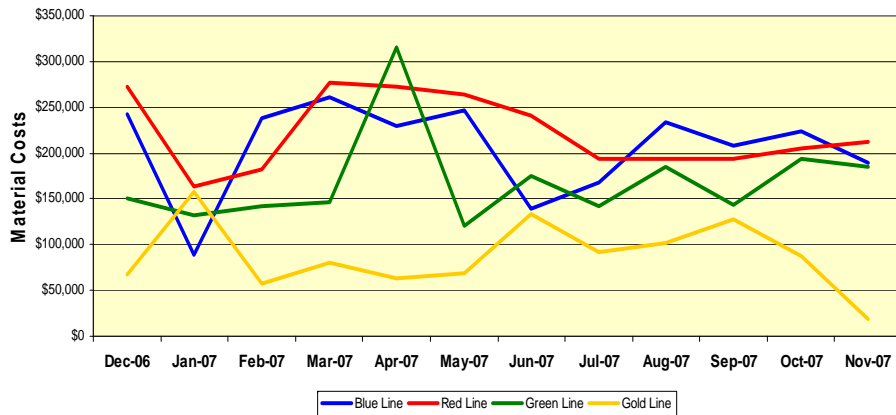
Total for November 2007: \$ 136,661



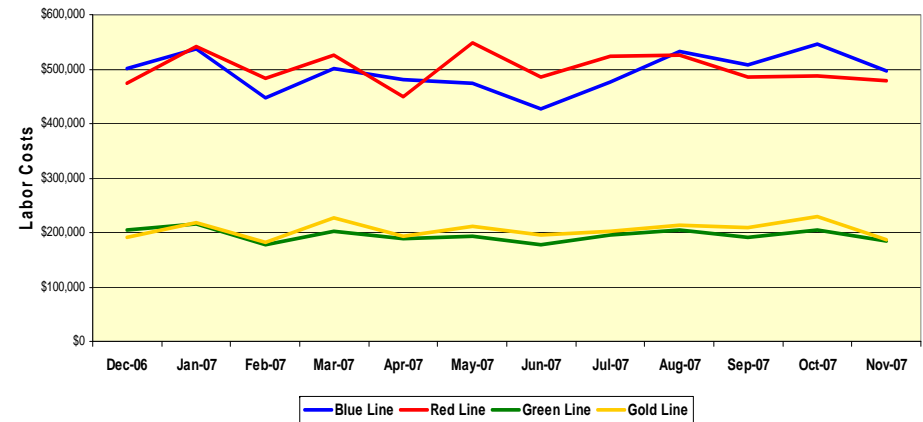
Material and Labor Costs

| Material Costs | Dec-06 | Jan-07 | Feb-07 | Mar-07 | Apr-07 | May-07 | Jun-07 | Jul-07 | Aug-07 | Sep-07 | Oct-07 | Nov-07 |
|----------------|--------|--------|--------|--------|--------|----------|--------|--------|--------|--------|--------|--------|
| Blue Line | \$230K | \$60K | \$228K | \$241K | \$216K | \$236K | \$109K | \$177K | \$209K | \$176K | \$224K | \$189K |
| Red Line | \$258K | \$160K | \$178K | \$236K | \$252K | \$595K | \$227K | \$180K | \$147K | \$209K | \$205K | \$212K |
| Green Line | \$141K | \$124K | \$136K | \$139K | \$308K | \$117K | \$164K | \$143K | \$181K | \$139K | \$193K | \$139K |
| Gold Line | \$63K | \$156K | \$52K | \$76K | \$58K | \$65K | \$121K | \$91K | \$100K | \$119K | \$88K | \$19K |
| Totals | \$731K | \$499K | \$594K | \$693K | \$835K | \$1,015K | \$620K | \$591K | \$638K | \$643K | \$710K | \$559K |

Material Costs



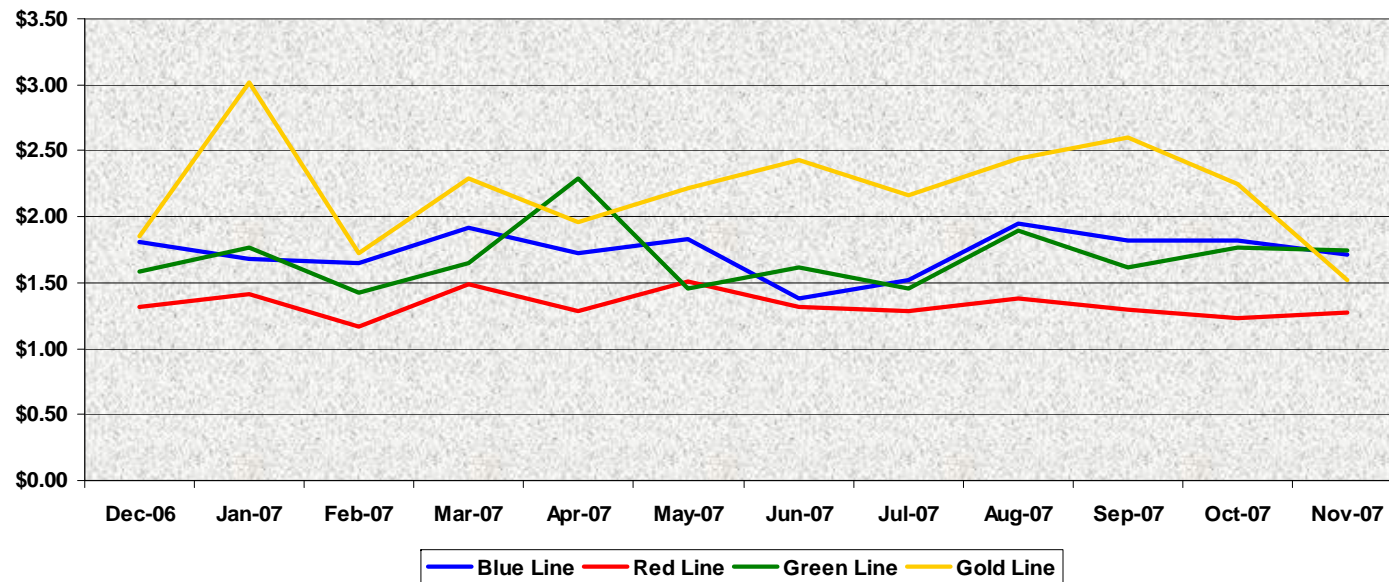
Labor Costs



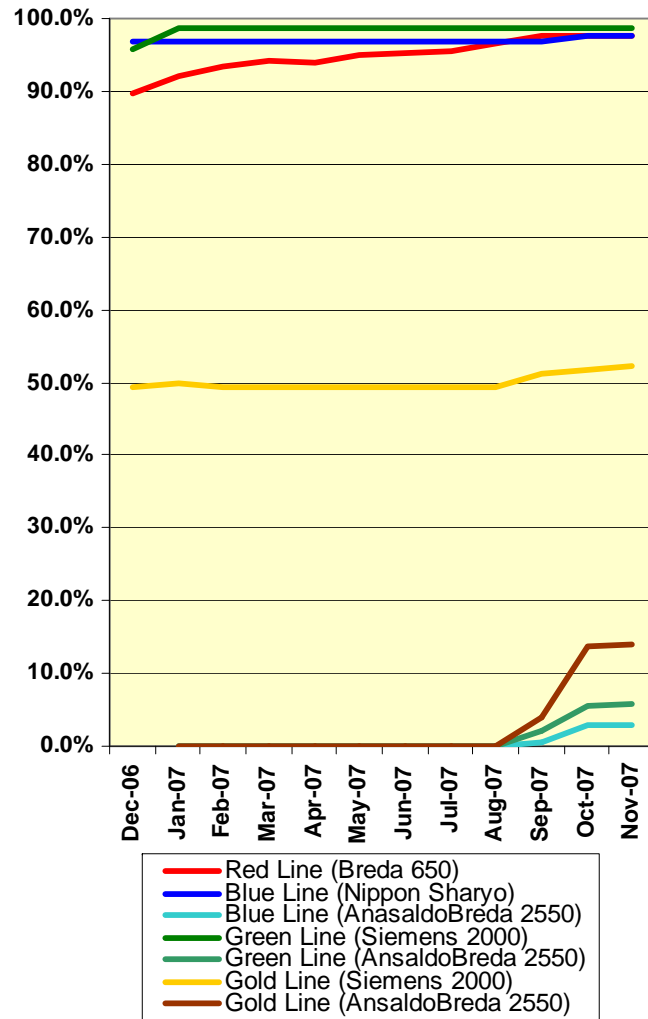
| Labor Costs | Dec-06 | Jan-07 | Feb-07 | Mar-07 | Apr-07 | May-07 | Jun-07 | Jul-07 | Aug-07 | Sep-07 | Oct-07 | Nov-07 |
|-------------|----------|----------|----------|----------|----------|----------|----------|----------|----------|----------|----------|----------|
| Blue Line | \$500K | \$537K | \$446K | \$502K | \$482K | \$475K | \$427K | \$476K | \$532K | \$508K | \$545K | \$496K |
| Red Line | \$475K | \$542K | \$483K | \$526K | \$450K | \$548K | \$485K | \$523K | \$527K | \$485K | \$489K | \$479K |
| Green Line | \$204K | \$215K | \$178K | \$201K | \$190K | \$194K | \$177K | \$196K | \$204K | \$190K | \$204K | \$185K |
| Gold Line | \$192K | \$218K | \$182K | \$227K | \$194K | \$211K | \$196K | \$202K | \$214K | \$208K | \$229K | \$186K |
| Totals | \$1,372K | \$1,512K | \$1,289K | \$1,455K | \$1,315K | \$1,427K | \$1,286K | \$1,397K | \$1,477K | \$1,392K | \$1,466K | \$1,346K |

Cost Per Mile

| Cost per mile: | Dec-06 | Jan-07 | Feb-07 | Mar-07 | Apr-07 | May-07 | Jun-07 | Jul-07 | Aug-07 | Sep-07 | Oct-07 | Nov-07 | Average |
|----------------|--------|--------|--------|--------|--------|--------|--------|--------|--------|--------|--------|--------|---------|
| Blue Line | \$1.78 | \$1.61 | \$1.62 | \$1.86 | \$1.69 | \$1.80 | \$1.31 | \$1.52 | \$1.94 | \$1.82 | \$1.82 | \$1.72 | \$1.73 |
| Red Line | \$1.29 | \$1.40 | \$1.16 | \$1.41 | \$1.25 | \$2.12 | \$1.29 | \$1.28 | \$1.38 | \$1.30 | \$1.23 | \$1.28 | \$1.33 |
| Green Line | \$1.54 | \$1.73 | \$1.39 | \$1.62 | \$2.26 | \$1.44 | \$1.56 | \$1.45 | \$1.89 | \$1.62 | \$1.77 | \$1.53 | \$1.69 |
| Gold Line | \$1.81 | \$3.00 | \$1.69 | \$2.26 | \$1.93 | \$2.19 | \$2.34 | \$2.16 | \$2.45 | \$2.60 | \$2.25 | \$1.52 | \$2.21 |



Rail Fleet Services Instruction – November 2007



| Description | Status | Start | End | Course Hours | Student Count | Training Hours |
|-------------|--------|-------|-----|--------------|---------------|----------------|
|-------------|--------|-------|-----|--------------|---------------|----------------|

Nippon Sharyo 865/2020 LRV Instruction:

Total Nippon Sharyo 865 LRV Training (Hours): **0**

Breda A650 HRV Instruction:

Total Breda 650 HRV Training (Hours): **0**

Siemens 2000 Instruction:

| | | | | | | |
|-------------------------------------|----------|------------|------------|----|---|-----|
| RFS SIEMENS 2000 DOOR CONTROLS | Complete | 11/7/2007 | 11/13/2007 | 40 | 8 | 320 |
| RFS SIEMENS 2000 AUXILIARY INVERTER | Complete | 11/21/2007 | 11/30/2007 | 48 | 6 | 288 |

Total Siemens 2000 LRV Training (Hours): **608**

AnsaldoBreda 2550 LRV Instruction:

| | | | | | | |
|--|----------|-----------|-----------|----|---|-----|
| RFS ANSALDOBREDA 2550 INTEGRATED DISPLAY | Complete | 11/7/2007 | 11/7/2007 | 8 | 9 | 72 |
| RFS ANSALDOBREDA 2550 DOORS | Complete | 11/5/2007 | 11/6/2007 | 16 | 9 | 144 |
| RFS ANSALDOBREDA 2550 H.V.A.C. | Complete | 11/1/2007 | 11/2/2007 | 16 | 9 | 144 |

Total AnsaldoBreda 2550 LRV Line Training (Hours): **360**

New Maintenance Specialist Training:

Total New Employee Training (Hours): **0**

Miscellaneous Training Classes

| | | | | | | |
|--|----------|------------|------------|---|---|---|
| DRUG-AND-ALCOHOL-FREE WORK ENVIRONMENT POLICY | Complete | 11/29/2007 | 11/29/2007 | 4 | 2 | 8 |
| P-CARD TRAINING FOR CARD HOLDERS AND AOS | Complete | 11/13/2007 | 11/13/2007 | 2 | 2 | 4 |
| EFFECTIVE MEETINGS | Complete | 11/20/2007 | 11/20/2007 | 3 | 1 | 3 |
| TRANSITSAFE WEB/VAMS OVERVIEW AND TRAINING FOR A | Complete | 11/15/2007 | 11/15/2007 | 2 | 2 | 4 |
| ETD EFFECTIVE TIME MANAGEMENT | Complete | 11/27/2007 | 11/27/2007 | 3 | 1 | 3 |
| ETD METRO'S TUITION ASSISTANCE PROGRAM | Complete | 11/8/2007 | 11/8/2007 | 2 | 2 | 4 |
| MOP VIOLENCE IN THE WORKPLACE | Complete | 11/16/2007 | 11/16/2007 | 4 | 1 | 4 |
| OPERATIONS COMPUTER PROGRAM | Complete | 11/14/2007 | 11/14/2007 | 8 | 1 | 8 |
| MOP TITLE VII AND SEXUAL HARASSMENT PREVENTION | Complete | 11/1/2007 | 11/1/2007 | 2 | 4 | 8 |

Total Management Training (Hours): **46**

Total Rail Fleet Services Instruction for the month of November 2007 (Hours): 1,014.0

Core Vehicle Training Completed:

| | BLUE | RED | GOLD | GREEN |
|---|-------|-------|-------|-------|
| Percentage of core vehicle training complete: | 97.7% | 97.6% | 52.3% | 98.8% |
| AnsaldoBreda 2550 Training Completed: | 2.9% | N/A | 14.0% | 5.7% |

Average Specialist Rail Experience Level in Years: **8.9 7.1 5.7 7.8**

