



# **Rail Fleet Services Monthly Report October 2007**



**Metro**

# Table of Contents

• Safety	
– Industrial Injuries	Page 3
– Rail Vehicle Accidents & Major Incidents	Page 4
• Customer Service	
– Service Delivery – AM/PM Pull-Outs	Page 5
– Mean Miles Between Failures (Major)	Page 6
• Business Processes	
– Incident Problems & Locations	
Blue & Red Lines	Page 7
– Incident Problems & Locations	
Green & Gold Lines	Page 8
– Preventative Maintenance Compliance	Page 9
• Finance	
– Vandalism & Graffiti Costs	Page 10
– Material & Labor Costs	Page 11
– Cost per mile	Page 12
• Growth	
– Rail Fleet Service Training	Page 13

# Industrial Injuries – Lost Work Hours

	Nov-06	Dec-06	Jan-07	Feb-07	Mar-07	Apr-07	May-07	Jun-07	Jul-07	Aug-07	Sep-07	Oct-07
Blue Line	176	168	184	120	144	120	21	0	0	72	48	168
Red Line	8	0	0	152	224	336	304	200	264	272	168	184
Green Line	176	160	176	64	0	0	0	0	0	0	0	2
Gold Line	128	328	376	320	216	264	288	392	264	368	328	80
Totals	488	656	736	656	584	720	613	592	528	712	544	434

## October 2007 Lost Work Hours

### Blue Line – 112 Assigned Employees (106 Active)

- Service Attendant – 168 hours

### Red Line – 105 Assigned Employees (99 Active)

- Maintenance Specialist – 184 hours

### Green Line – 46 Assigned Employees (45 Active)

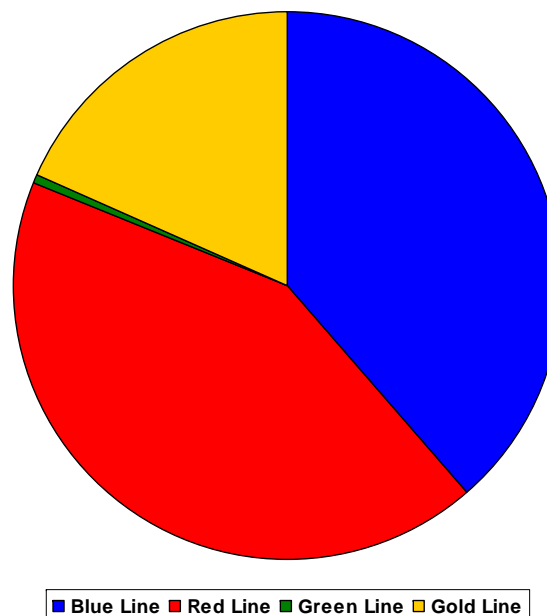
- Maintenance Specialist – 2 hours

### Gold Line – 50 Assigned Employees (48 Active)

- Service Attendant – 80 hours

Total Lost Work Hours for Oct. 2007 – 434 hours

## October 2007 Lost Work Hours



# Rail Vehicle Accidents & Major Incidents

	Nov-06	Dec-06	Jan-07	Feb-07	Mar-07	Apr-07	May-07	Jun-07	Jul-07	Aug-07	Sep-07	Oct-07
Blue Line	\$1,360	\$48,543	\$1,236	\$1,027	\$1,485	\$6,869	\$57	\$9,551	\$4,652	\$67,854	\$7,532	\$0
Red Line	\$0	\$0	\$0	\$0	\$0	\$0	\$0	\$0	\$0	\$0	\$0	\$0
Gold Line	\$0	\$1,765	\$0	\$0	\$0	\$0	\$0	\$0	\$0	\$0	\$33,925	\$34,189
Green Line	\$0	\$0	\$0	\$0	\$0	\$0	\$0	\$0	\$0	\$0	\$0	\$0
Totals	\$1,360	\$50,308	\$1,236	\$1,027	\$1,485	\$6,869	\$57	\$9,551	\$4,652	67,854	\$41,457	\$34,189

## October 2007 Rail Vehicle Accidents & Major Incidents

### Blue Line

- Oct. 10, Train vs. Auto, Washington & Flower, Los Angeles, Car 105, No damage to train.
- Oct. 10, Train vs. rubber tires, 108<sup>th</sup> Street, Los Angeles, cars involved unknown, no damage to train.

### Gold Line

- Sept. 11, Train vs. Truck, Marmion Way & Ave. 55, Los Angeles, Car 248, Oct repair costs \$19,263, all repairs completed and car is back in service. Total repair costs \$49,946.
- Sept. 21, Train vs. Auto with fire, Ave. 50, Los Angeles, Car 243, October repairs \$14,926, Total repairs to date \$18,168, project on hold awaiting structural analysis and repair estimate from OEM (Siemens).



Sept. 11, 2007  
Gold Line, Car 248



Sept. 21, 2007  
Gold Line, Car 243



\*\* Individual accident repair costs are not available until after the repairs have been completed. The repairs on the September 21<sup>st</sup> Gold Line accident may take nine to 12 months to complete. The monthly accident charges listed above only represent the expenses incurred in that particular month and are not a total repair of an individual accident.

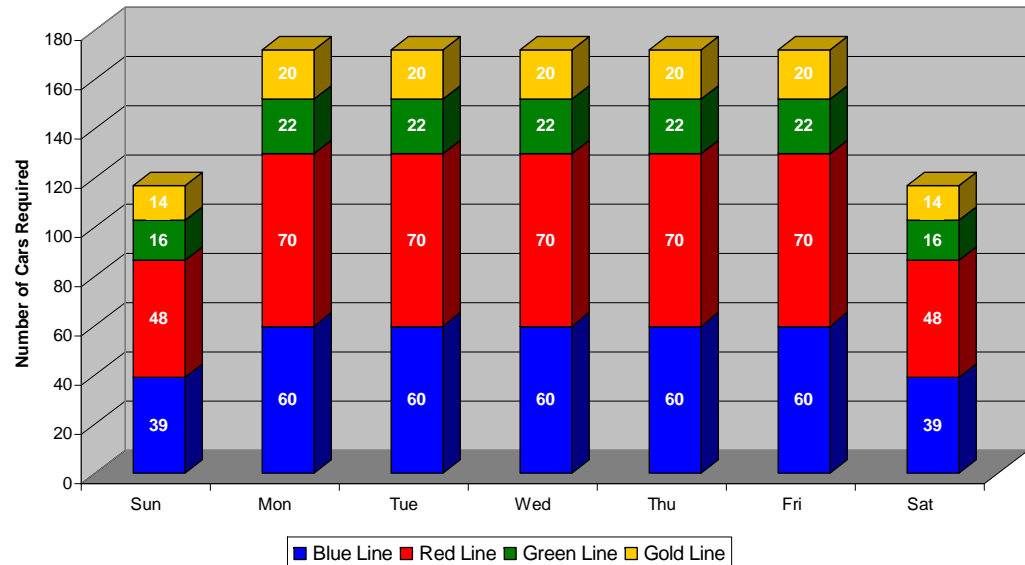
# Service Delivery – AM/PM Pull-Outs

## Cars Available for AM/PM Pull-Outs

	Oct-06	Nov-06	Dec-06	Jan-07	Feb-07	Mar-07	Apr-07	May-07	Jun-07	Jul-07	Aug-07	Sep-07
Blue Line	100%	100%	100%	100%	100%	100%	100%	100%	100%	100%	100%	100%
Red Line	100%	100%	100%	100%	100%	100%	100%	100%	100%	100%	100%	100%
Green Line	100%	100%	100%	100%	100%	100%	100%	100%	100%	100%	100%	100%
Gold Line	100%	100%	100%	100%	100%	100%	100%	100%	100%	100%	100%	100%

- **Blue Line – Fleet Size 69 cars**
  - Weekday pull-out: 60 cars
  - Weekend pull-out: 36 cars
  - **Monthly Mileage: 423,357 miles**
- **Red Line - Fleet Size 104 cars**
  - Weekday pull-out: 70 cars
  - Weekend pull-out: 48 cars
  - **Monthly Mileage: 564,280 miles**
- **Green Line – Fleet Size 28 cars**
  - Weekday pull-out: 22 cars
  - Weekend pull-out: 16 cars
  - **Monthly Mileage: 224,201 miles**
- **Gold Line – Fleet Size 24 cars**
  - Weekday pull-out: 20 cars
  - Weekend pull-out: 14 cars
  - **Monthly Mileage: 140,639 miles**

## AM/PM Pull-Out Requirements



# Mean Miles Between Failures (Major)

October 2007

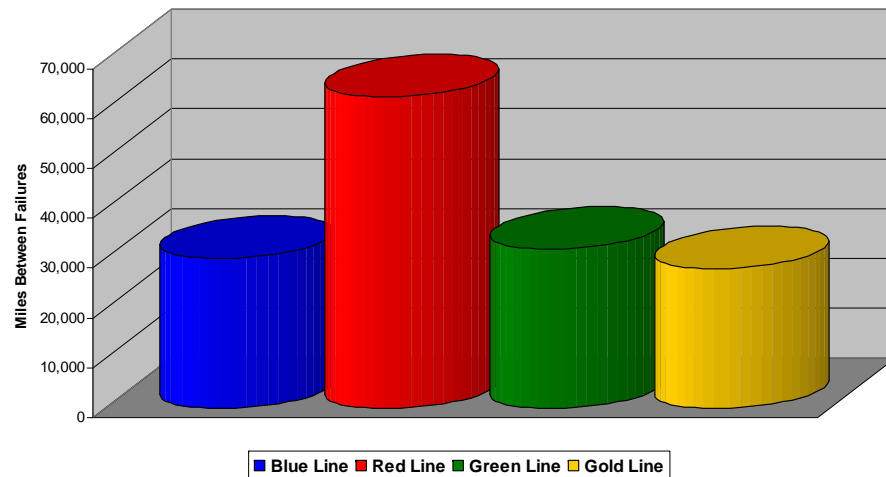
## FTA Major Failures

**Blue Line: 30,240 miles (14 FTA Major Failures)**

**Red Line: 62,698 miles (9 FTA Major Failures)**

**Green Line: 32,029 miles (7 FTA Major Failures)**

**Gold Line: 28,128 miles (5 FTA Major Failures)**



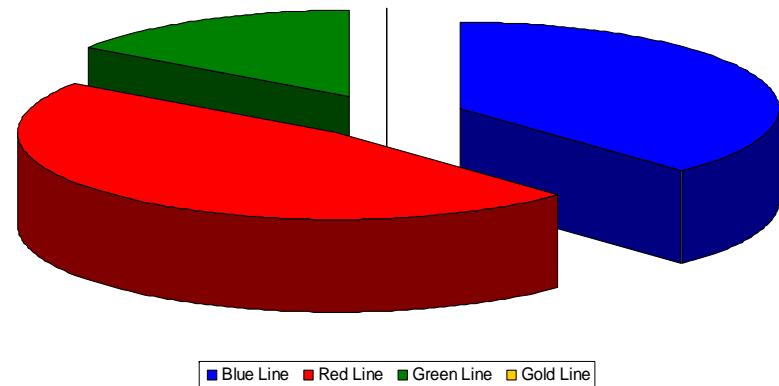
## Repeat Failures

**Blue Line: 25 Repeat Failures**

**Red Line: 31 Repeat Failures**

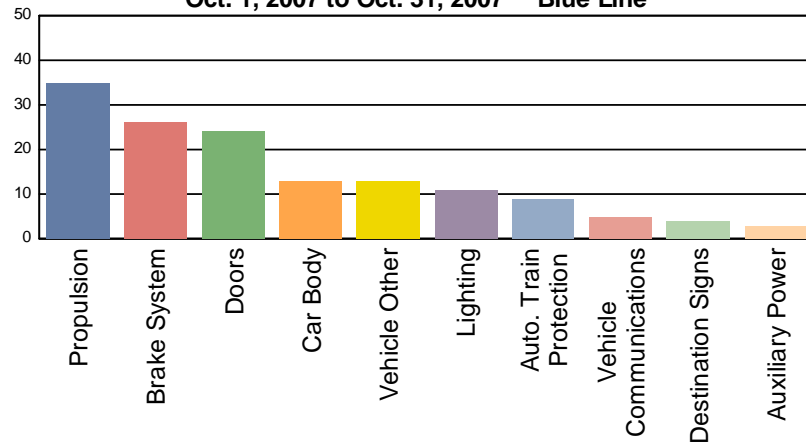
**Green Line: 10 Repeat Failures**

**Gold Line: 0 Repeat Failures**

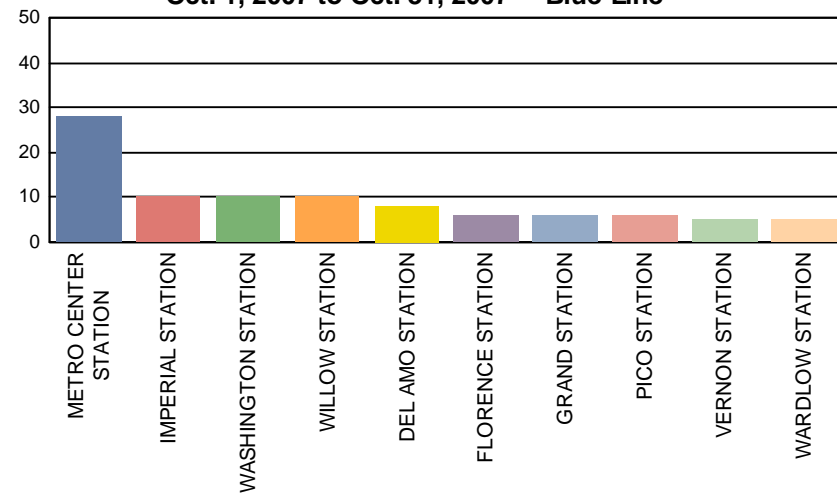


# Incident Problems & Locations – Blue & Red Lines

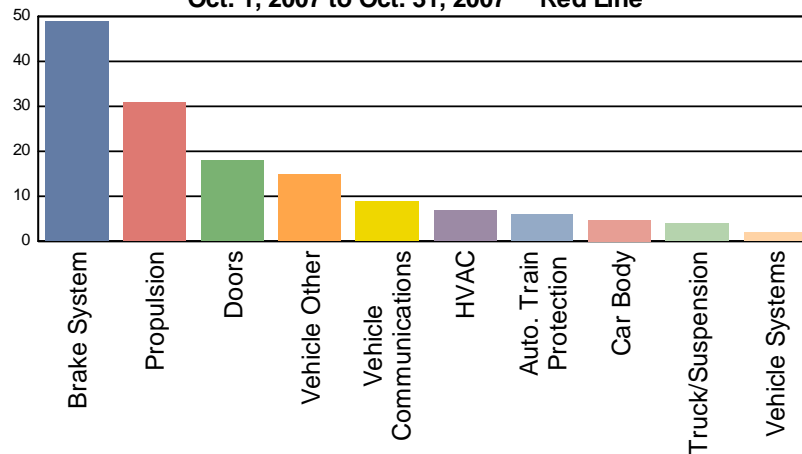
**Count of Top 10 Incident Problem Codes**  
Oct. 1, 2007 to Oct. 31, 2007 Blue Line



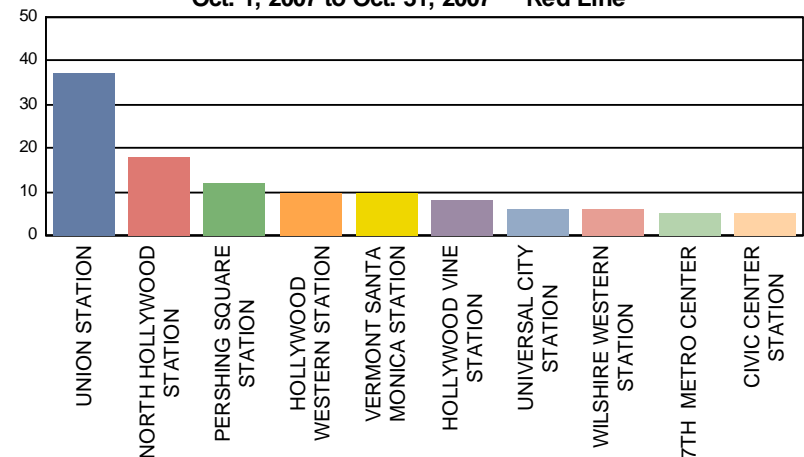
**Count of Top 10 Rail Vehicle Incidents by Location**  
Oct. 1, 2007 to Oct. 31, 2007 Blue Line



**Count of Top 10 Incident Problem Codes**  
Oct. 1, 2007 to Oct. 31, 2007 Red Line

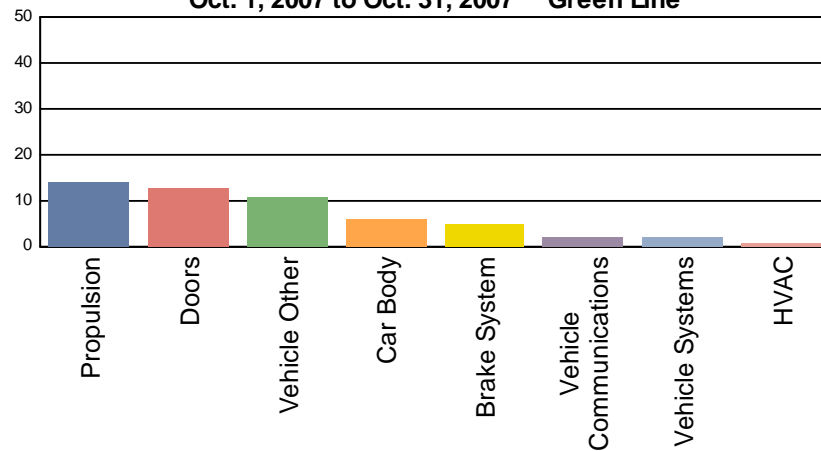


**Count of Top 10 Rail Vehicle Incidents by Location**  
Oct. 1, 2007 to Oct. 31, 2007 Red Line

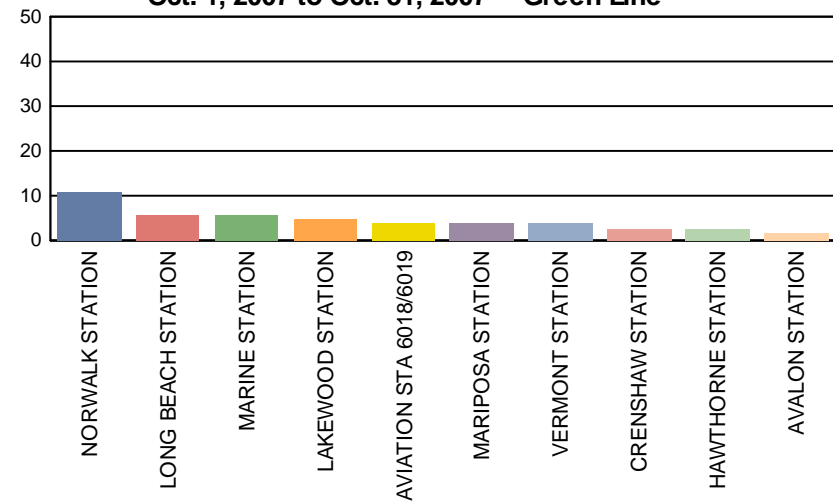


# Incident Problems & Locations – Green & Gold Lines

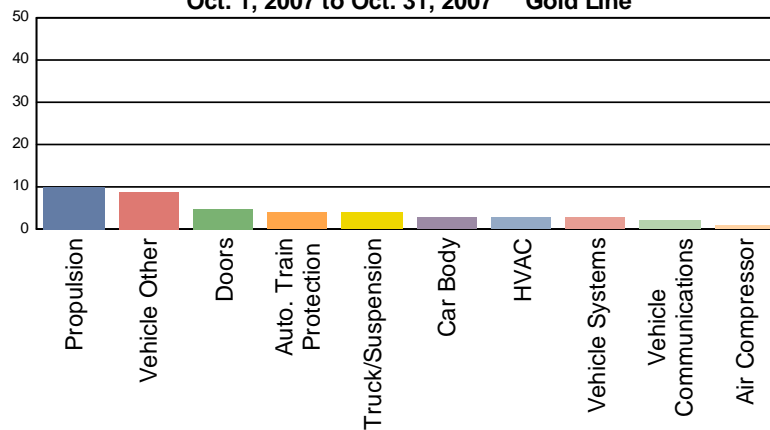
**Count of Top 10 Incident Problem Codes**  
Oct. 1, 2007 to Oct. 31, 2007 Green Line



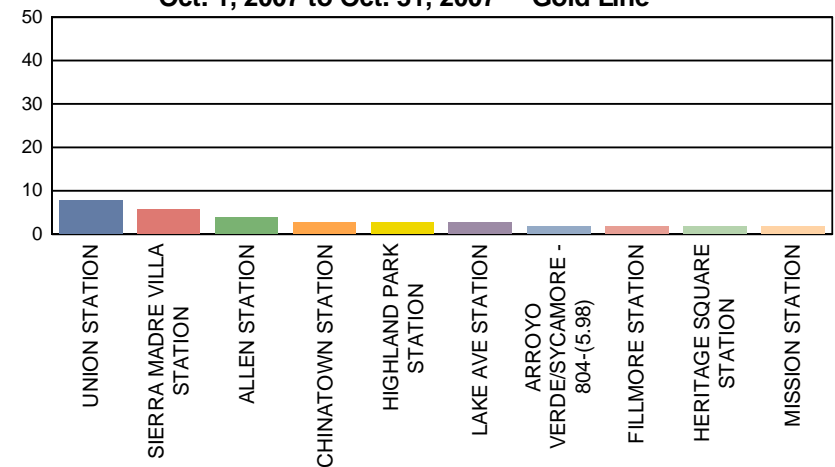
**Count of Top 10 Rail Vehicle Incidents by Location**  
Oct. 1, 2007 to Oct. 31, 2007 Green Line



**Count of Top 10 Incident Problem Codes**  
Oct. 1, 2007 to Oct. 31, 2007 Gold Line



**Count of Top 10 Rail Vehicle Incidents by Location**  
Oct. 1, 2007 to Oct. 31, 2007 Gold Line





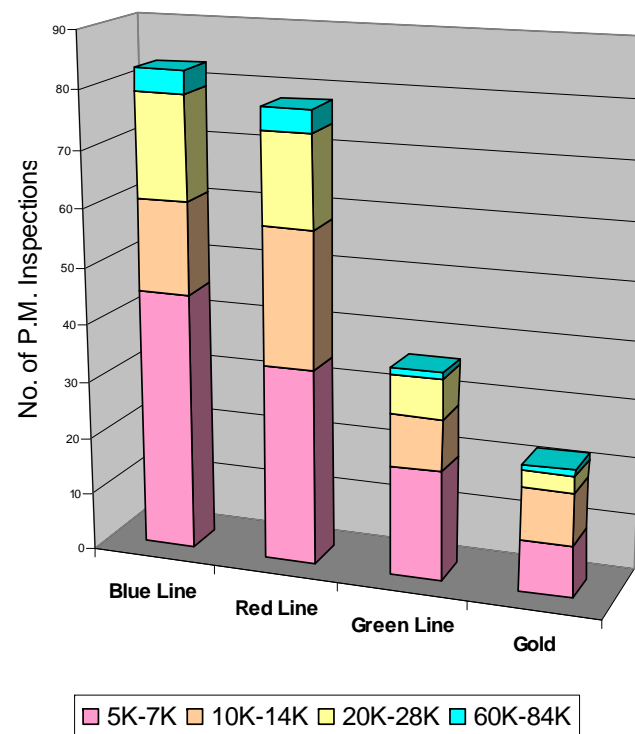
# Preventative Maintenance Compliance

	Nov-06	Dec-06	Jan-07	Feb-07	Mar-07	Apr-07	May-07	Jun-07	Jul-07	Aug-07	Sep-07	Oct-07
Blue Line	100%	100%	100%	100%	100%	100%	100%	100%	100%	100%	100%	100%
Red Line	100%	100%	100%	100%	100%	97%	100%	100%	100%	100%	100%	100%
Green Line	100%	100%	100%	100%	100%	100%	100%	100%	100%	100%	100%	100%
Gold Line	100%	100%	100%	100%	100%	100%	100%	100%	100%	100%	100%	100%

## October 2007 Preventative Maintenance Inspections

No. of P.M. Inspections	5K	10K	20K	60K	Totals
Blue Line	45	16	18	4	83

No. of P.M. Inspections	7K	14K	28K	84K	Totals
Red Line	34	24	16	4	78
Green Line	19	9	7	1	36
Gold Line	9	9	3	1	22



# Vandalism & Graffiti Report

	Nov-06	Dec-06	Jan-07	Feb-07	Mar-07	Apr-07	May-07	Jun-07	Jul-07	Aug-07	Sep-07	Oct-07
Blue Line	\$69,327	\$71,482	\$62,198	\$72,185	\$56,911	\$36,165	\$22,571	\$33,340	\$41,364	\$41,364	\$54,873	\$68,406
Red Line	\$16,418	\$35,928	\$17,487	\$16,387	\$11,893	\$12,098	\$17,357	\$21,464	\$11,906	\$11,906	\$11,645	\$9,355
Green Line	\$37,306	\$14,351	\$33,319	\$32,943	\$26,026	\$29,903	\$25,863	\$28,478	\$32,716	\$33,547	\$44,227	\$33,832
Gold Line	\$8,407	\$11,735	\$8,799	\$6,158	\$3,522	\$4,094	\$9,778	\$4,347	\$4,840	\$5,992	\$4,980	\$4,980
Totals	\$131,458	\$133,496	\$121,803	\$127,673	\$98,352	\$82,260	\$75,569	\$87,629	\$90,826	\$92,809	\$115,725	\$113,442

## October 07 Vandalism & Graffiti

Windows replaced: 93 = \$10,235

Vandal Shields replaced: 393 = \$6,264

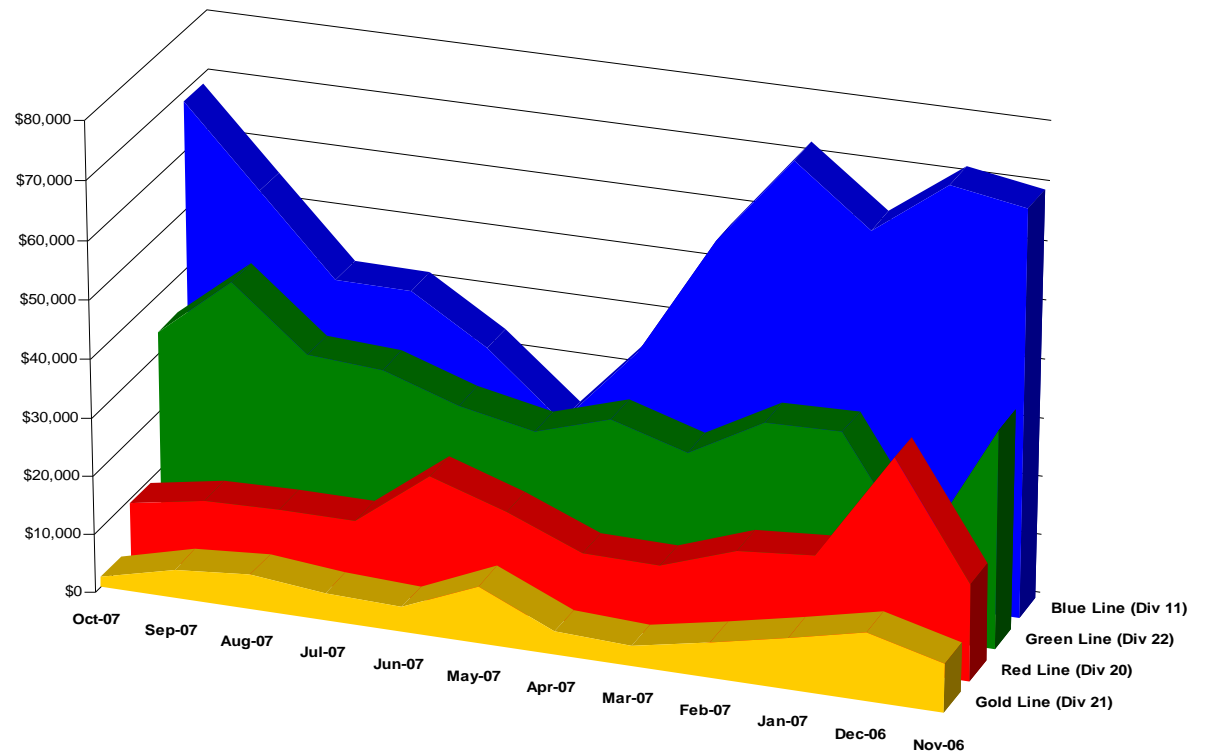
Seats cleaned: 5,532

Seats replaced: 87 = \$3,150

Ext./Int. repairs: 422 cars = \$3,649

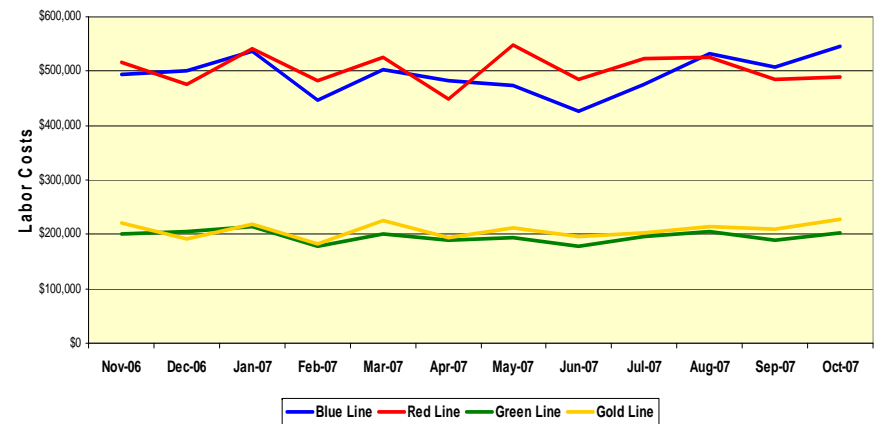
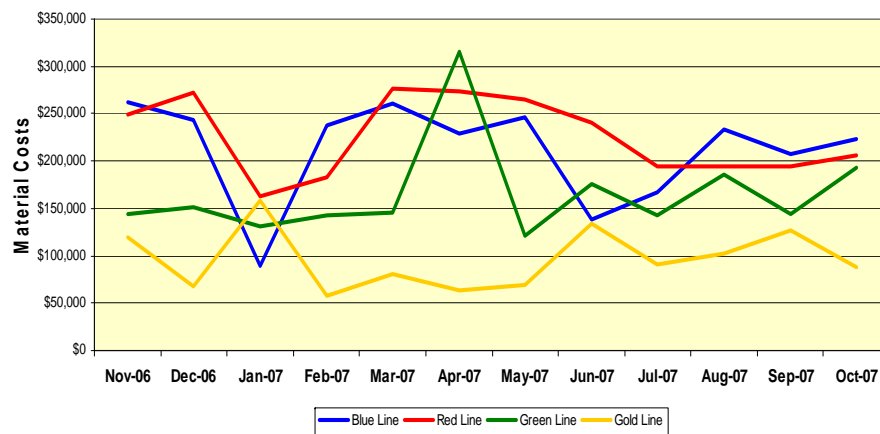
Labor = \$90,144

Total for October 2007: \$113,442



# Material and Labor Costs

Material Costs	Nov-06	Dec-06	Jan-07	Feb-07	Mar-07	Apr-07	May-07	Jun-07	Jul-07	Aug-07	Sep-07	Oct-07
Blue Line	\$262K	\$243K	\$89K	\$238K	\$261K	\$229K	\$247K	\$139K	\$1167	\$233K	\$208K	\$224K
Red Line	\$249K	\$273K	\$163K	\$182K	\$277K	\$273K	\$264K	\$241K	\$194K	\$194K	\$194K	\$205K
Green Line	\$144K	\$151K	\$132K	\$143K	\$146K	\$315K	\$121K	\$175K	\$142K	\$185K	\$144K	\$193K
Gold Line	\$119K	\$68K	\$158K	\$57K	\$81K	\$63K	\$69K	\$134K	\$91K	\$102K	\$127K	\$88K
Totals	\$774K	\$735K	\$541K	\$620K	\$764K	\$880K	\$701K	\$689K	\$594K	\$715K	\$673K	\$710K



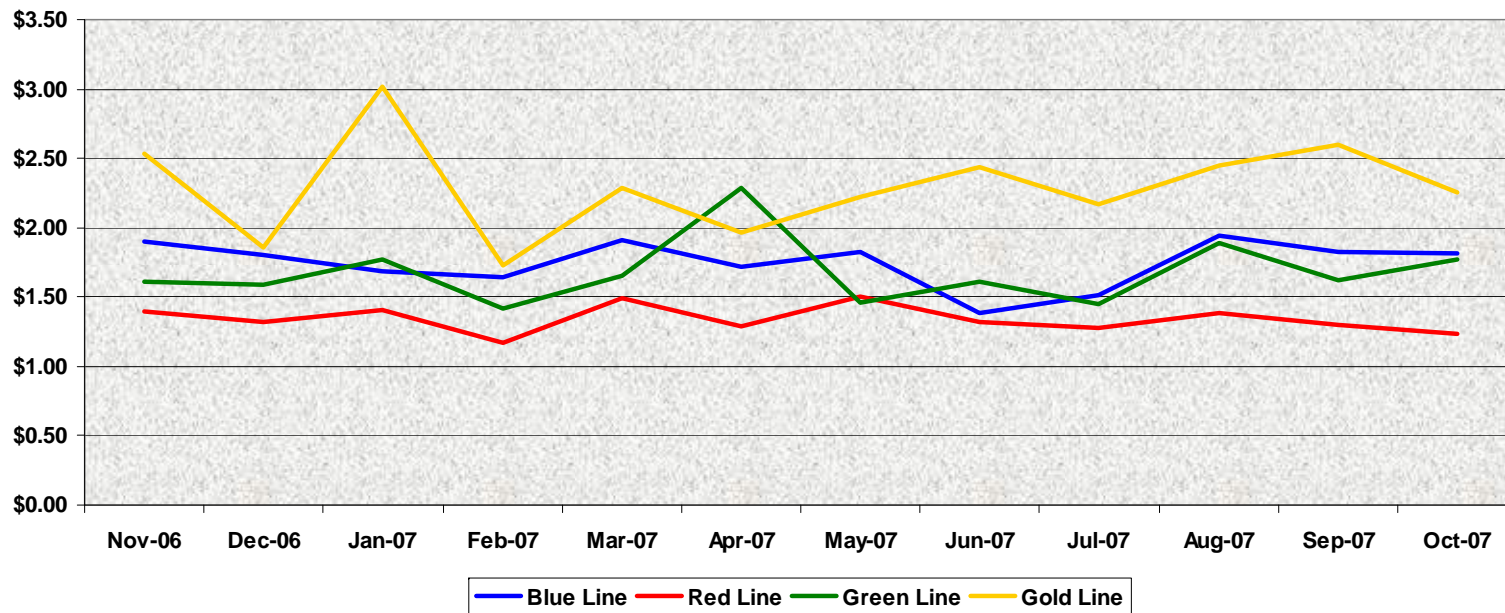
Labor Costs	Nov-06	Dec-06	Jan-07	Feb-07	Mar-07	Apr-07	May-07	Jun-07	Jul-07	Aug-07	Sep-07	Sep-07
Blue Line	\$494K	\$500K	\$537K	\$446K	\$502K	\$482K	\$475K	\$427K	\$476K	\$532K	\$508K	\$545K
Red Line	\$517K	\$475K	\$542K	\$483K	\$526K	\$450K	\$548K	\$485K	\$523K	\$527K	\$485K	\$489K
Green Line	\$200K	\$204K	\$215K	\$178K	\$201K	\$190K	\$194K	\$177K	\$196K	\$204K	\$190K	\$204K
Gold Line	\$221K	\$192K	\$218K	\$182K	\$227K	\$194K	\$211K	\$196K	\$202K	\$214K	\$208K	\$229K
Totals	\$1,431K	\$1,372K	\$1,512K	\$1,289K	\$1,455K	\$1,315K	\$1,427K	\$1,286K	\$1,397K	\$1,477K	\$1,392K	\$1,466K



Metro

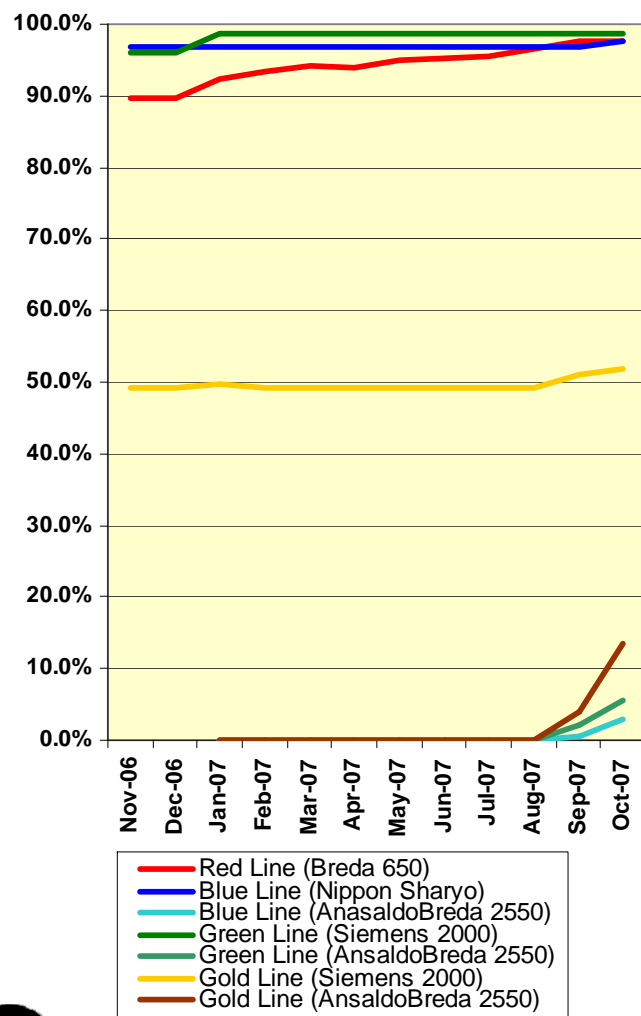
# Cost Per Mile

Cost per mile:	Nov-06	Dec-06	Jan-07	Feb-07	Mar-07	Apr-07	May-07	Jun-07	Jul-07	Aug-07	Sep-07	Oct-07	Average
Blue Line	\$1.90	\$1.81	\$1.69	\$1.65	\$1.91	\$1.72	\$1.83	\$1.38	\$1.52	\$1.94	\$1.82	\$1.82	\$1.75
Red Line	\$1.40	\$1.32	\$1.41	\$1.17	\$1.49	\$1.29	\$1.50	\$1.32	\$1.28	\$1.38	\$1.30	\$1.23	\$1.34
Green Line	\$1.61	\$1.59	\$1.77	\$1.42	\$1.65	\$2.29	\$1.46	\$1.61	\$1.45	\$1.89	\$1.62	\$1.77	\$1.68
Gold Line	\$2.53	\$1.85	\$3.02	\$1.73	\$2.29	\$1.96	\$2.22	\$2.43	\$2.16	\$2.45	\$2.60	\$2.25	\$2.29



Cost per mile totals only includes direct vehicle related expenses.

# Rail Fleet Services Instruction – October 2007



**Metro**

Description	Status	Start	End	Course Hours	Student Count	Training Hours
<b><u>Nippon Sharyo 854/2020 LRV Instruction:</u></b>						
Total Nippon Sharyo 865 LRV Training (Hours):						0

<b><u>Breda A650 HRV Instruction:</u></b>						
RFS Breda 650 MTO SYSTEMS	Complete	10/17/2007	10/19/2007	24	1	24
RFS Breda 650 DOOR SYSTEM	Complete	10/9/2007	10/11/2007	24	1	24
RFS Breda 650 COMMUNICATIONS	Complete	10/3/2007	10/5/2007	24	1	24
RFS Breda 650 LVPS DC/DC CONVERTER	Complete	10/3/2007	10/3/2007	8	1	8
RFS Breda 650 INTEGRATED TROUBLESHOOTING	Complete	4/16/2007	10/2/2007	16	3	48
RFS Breda 650 P.M. PROGRAM	Complete	4/16/2007	10/2/2007	16	3	48
Total Breda 650 HRV Training (Hours):						176

<b><u>Siemens 2000 Instruction:</u></b>						
RFS SIEMENS 2000 REVIEW	Complete	10/23/2007	10/26/2007	32	6	192
RFS SIEMENS 2000 DOORS	Cont in Nov	10/30/2007	11/13/2007	16	6	96
Total Siemens 2000 LRV Training (Hours):						288

<b><u>AnsaldoBreda 2550 LRV Instruction:</u></b>						
RFS ANSALDOBreda 2550 LIGHTING	Complete	10/1/2007	10/1/2007	4	9	36
RFS ANSALDOBreda 2550 SCHEMATICS	Complete	10/2/2007	10/12/2007	16	9	144
RFS ANSALDOBreda 2550 DOORS	Complete	10/3/2007	10/3/2007	8	9	72
RFS ANSALDOBreda 2550 PROPULSION	Complete	10/4/2007	10/11/2007	48	9	432
RFS ANSALDOBreda 2550 CARBODY	Complete	10/15/2007	10/16/2007	16	9	144
RFS ANSALDOBreda 2550 COMMUNICATIONS	Complete	10/17/2007	10/19/2007	24	9	216
RFS ANSALDOBreda 2550 COUPLER	Complete	10/22/2007	10/22/2007	8	9	72
RFS ANSALDOBreda 2550 A.T.P. & T.V.C.	Complete	10/23/2007	10/26/2007	32	9	288
RFS ANSALDOBreda 2550 TRUCKS & WHEELS	Complete	10/29/2007	10/31/2007	24	9	216
Total AnsaldoBreda 2550 LRV Line Training (Hours):						1620

<b><u>New Maintenance Specialist Training:</u></b>						
Total New Employee Training (Hours):						0

<b><u>Miscellaneous Training Classes</u></b>						
MOP DIVERSITY TRAINING	Complete	10/26/2007	10/26/2007	3.5	1	3.5
M3-C SUPV/TIME CLERK TIME KEEPING	Complete	10/3/2007	10/3/2007	3.5	3	10.5
DRUG-AND-ALCOHOL-FREE WORK ENVIRONMENT POLIC	Complete	10/30/2007	10/30/2007	4	2	8
MOP RECORD MANAGEMENT	Complete	10/25/2007	10/25/2007	2	2	4
ETD BUSINESS WRITING SKILLS	Complete	10/24/2007	10/24/2007	3	1	3
CLASS A DRIVERS LICENSE TRAINING	Complete	10/1/2007	10/26/2007	106	3	318
MOP ADA-REASONABLE ACCOMMODATION	Complete	10/16/2007	10/16/2007	4	1	4
ETD PC 101 ESSENTIAL CONCEPTS	Complete	10/30/2007	10/30/2007	3	1	3
MOP DIVERSITY TRAINING	Complete	10/26/2007	10/26/2007	3.5	1	3.5
Total Management Training (Hours):						357.5

**Total Rail Fleet Services Instruction for the month of October 2007 (Hours): 2,441.5**

<b><u>Core Vehicle Training Completed:</u></b>	<b>BLUE</b>	<b>RED</b>	<b>GOLD</b>	<b>GREEN</b>
Percentage of core vehicle training complete:	96.8%	97.6%	51.8%	98.8%
AnsaldoBreda 2550 Training Completed:	2.8%	N/A	13.6%	5.5%

Average Specialist Rail Experience Level in Years: 8.9 7.1 5.6 7.7