



Rail Fleet Services Monthly Report April, 2008



Metro

Table of Contents

- **Safety**
 - Industrial Injuries Page 1
 - Rail Vehicle Accidents & Major Incidents Page 2
- **Customer Service**
 - Service Delivery – AM/PM Pull-Outs Page 3
 - Mean Miles Between Failures (Major) Page 4
 - Repeater Car Details Page 5
- **Business Processes**
 - Incident Problems & Locations: Blue & Red Lines Page 6
 - Incident Problems & Locations: Green & Gold Lines Page
 - Preventative Maintenance Compliance Page 8
- **Finance**
 - Vandalism & Graffiti Costs Page 9
 - Graffiti Pictures Page 10
 - Material & Labor Costs Page 11
 - Cost per mile Page 12
 - Capital Projects Page 13
- **Growth**
 - Rail Fleet Service Training Page 14

Industrial Injuries – Lost Work Hours

April 2008

	May-07	Jun-07	Jul-07	Aug-07	Sep-07	Oct-07	Nov-07	Dec-07	Jan-08	Feb-08	Mar-08	Apr-08	Year to Date
Blue Line	21	0	0	72	48	168	168	133	24	0	80	48	762
Red Line	304	200	264	272	168	184	96	0	0	208	96	144	1,936
Green Line	0	0	0	0	0	2	0	0	160	24	0	0	186
Gold Line	288	392	264	368	328	80	160	176	72	0	0	0	2,128
Totals	613	592	528	712	544	434	424	309	256	232	176	192	5,012

April 2008 Lost Work Hours

Blue Line – 111 Assigned Employees (105 Active)

- Service Attendant – 48 hours

Red Line – 113 Assigned Employees (109 Active)

- Service Attendants – 144 hours

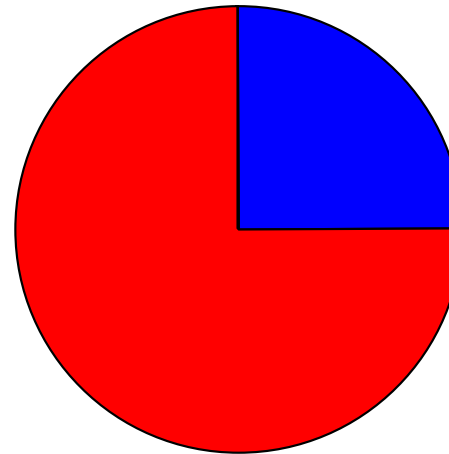
Green Line – 47 Assigned Employees (45 Active)

Gold Line – 45 Assigned Employees (43 Active)

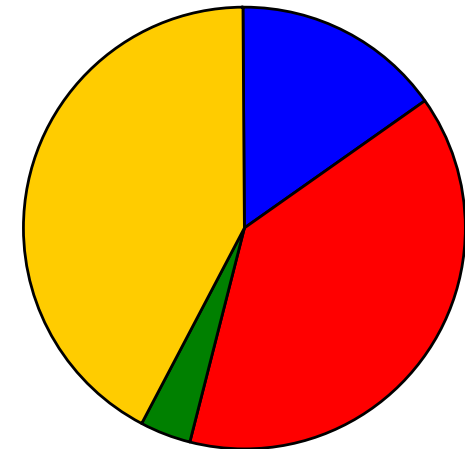
Total Lost Work Hours for April 2008 – 192 hours

Total Lost Work Hours for 12-Months – 5,012 hours

April 2008 Lost Work Hours



Year-to-Date



■ Blue Line
 ■ Red Line
 ■ Green Line
 ■ Gold Line

Rail Vehicle Accidents & Major Incidents

April 2008

	May-07	Jun-07	Jul-07	Aug-07	Sep-07	Oct-07	Nov-07	Dec-07	Jan-08	Feb-08	Mar-08	Apr-08
Blue Line	\$57	\$9,551	\$4,652	\$46,144	\$7,532	\$0	\$4,661	\$4,489	\$8,500	\$497	\$4,235	\$1,789
Red Line	\$0	\$0	\$0	\$0	\$0	\$0	\$203	\$0	\$0	\$0	\$274	0
Green Line	\$0	\$0	\$0	\$0	\$0	\$0	\$6,036	\$0	\$0	\$289	\$0	0
Gold Line	\$0	\$0	\$0	\$0	\$33,925	\$34,189	\$0	\$326	\$340	\$18,388	\$0	0
Totals	\$57	\$9,551	\$4,652	\$46,144	\$41,457	\$34,189	\$10,900	\$4,815	\$8,840	\$19,174	\$4,509	\$1,789

April 2008 Rail Vehicle Accidents & Major Incidents

Blue Line

- April 7, 2008 – Train vs. Ped at GradeX. Train 8, T-268, LRV 104, 144, 100. 10-72 N/B at Grand Station Tk 1. (\$189)
- April 7, 2008 – Train vs. Auto. Train #6 T-194. Reports 10-73 at Long Beach and 3rd. (\$1,600)

The monthly accident charges listed above represent only the expenses incurred in that particular month and are not a total repair of an individual accident.



04-07-08 Blue Line Train #6T-194 vs. Auto that made a left turn on Long Beach & 3rd St.

Service Delivery – AM/PM Pull-Outs

April 2008

Cars Available for AM/PM Pull-Outs

	May-07	Jun-07	Jul-07	Aug-07	Sep-07	Oct-07	Nov-07	Dec-07	Jan-08	Feb-08	Mar-08	Apr-08
Blue Line	100%	100%	100%	100%	100%	100%	100%	99%	100%	100%	100%	100%
Red Line	100%	100%	100%	100%	100%	100%	100%	100%	100%	100%	100%	100%
Green Line	100%	100%	100%	100%	100%	100%	100%	100%	100%	100%	100%	100%
Gold Line	100%	100%	100%	100%	100%	100%	100%	100%	100%	100%	100%	100%

AM/PM Pull-Out Requirements

Blue Line – Fleet Size 69 cars

- Weekday pull-out: 60 cars
- Weekend pull-out: 36 cars
- **Monthly Mileage: 413,703 miles**

Red Line - Fleet Size 104 cars

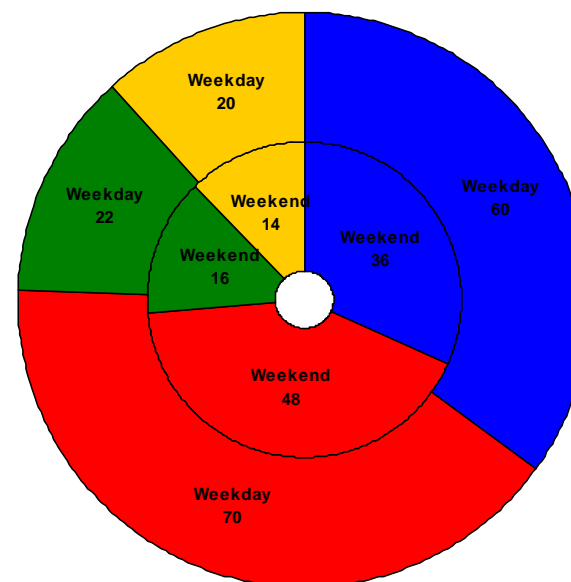
- Weekday pull-out: 70 cars
- Weekend pull-out: 48 cars
- **Monthly Mileage: 552,078 miles**

Green Line – Fleet Size 28 cars

- Weekday pull-out: 22 cars
- Weekend pull-out: 16 cars
- **Monthly Mileage: 218,846 miles**

Gold Line – Fleet Size 24 cars

- Weekday pull-out: 20 cars
- Weekend pull-out: 14 cars
- **Monthly Mileage: 149,528 miles**



■ Blue Line ■ Red Line ■ Green Line ■ Gold Line

Mean Miles Between Failures (Major)

April 2008

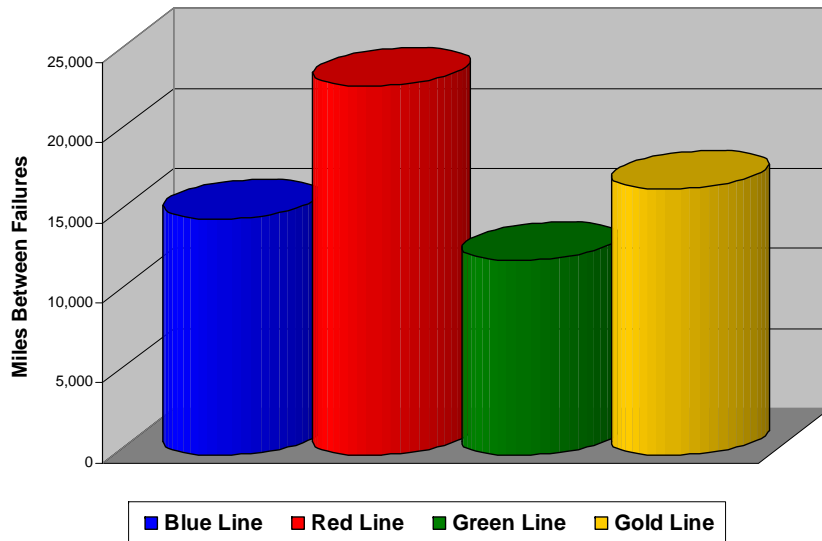
FTA Major Failures

Blue Line: 14,775 miles (28 FTA Major Failures)

Red Line: 23,003 miles (24 FTA Major Failures)

Green Line: 12,158 miles (18 FTA Major Failures)

Gold Line: 16,614 miles (9 FTA Major Failures)



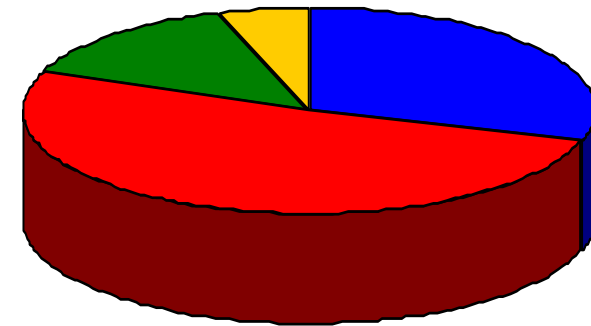
Repeat Failures

Blue Line: 24 Repeat Failures

Red Line: 42 Repeat Failures

Green Line: 11 Repeat Failures

Gold Line: 4 Repeat Failures



■ Blue Line ■ Red Line ■ Green Line ■ Gold Line

Repeater Car Details

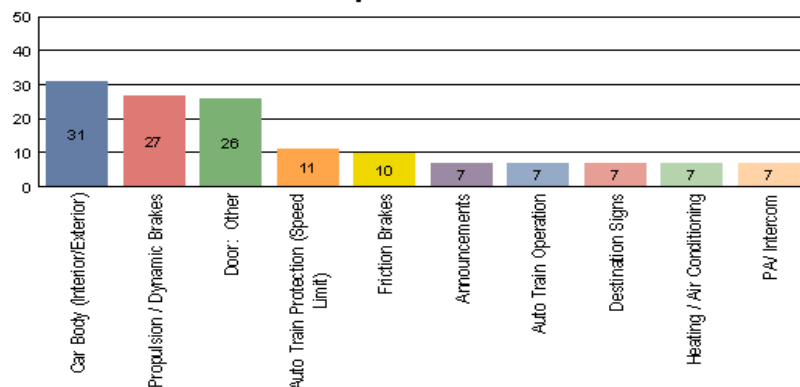
April 2008

	BLUE LINE		RED LINE		GREEN LINE		GOLD LINE	
System	Car #	No. of Repeats	Car #	No. of Repeats	Car #	No. of Repeats	Car #	No. of Repeats
Automatic Train Operation/Protection	124 134	1 1	544 543	1 1	216	1		
Automatic Train Operation			539 547 551 552 559 585 598 573 575 585 514	1 1 1 2 2 1 1 1 3 1 1				
Car Body	154	1						
Destination Sign (TICU)	154	1	596 600	1 2				
Doors	100 121 122 130 147 148	2 1 3 2 1 1			204 210 228	1 1 1	233	1
Friction Brakes	140	1	565	1			239 247	1 2
HVAC	108	1	521 572	4 1	224 225	1 2		
Propulsion	101 131 132 138 139	1 1 1 1 1	517 522 523 574 577 591 592 597	1 1 1 4 1 2 1 1	216	2		
PA Intercom/Radio	150 152 158	1 1 1						
Truck/Wheels/Flats			541 557	3 1	225	1		
TOTALS	20	24	28	42	9	11	3	4

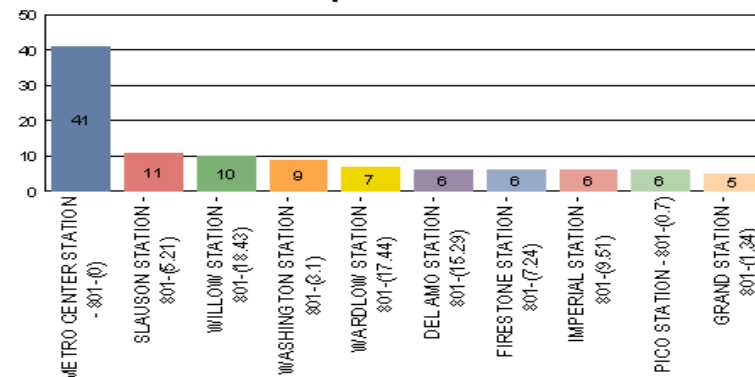
Incident Problems & Locations – Blue & Red Lines

Blue Line – April 2008

Count of the Top 10 Incident Problems

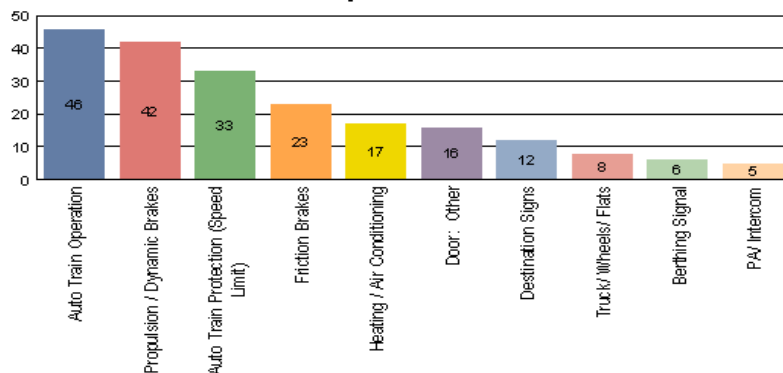


Count of the Top 10 Incident Locations

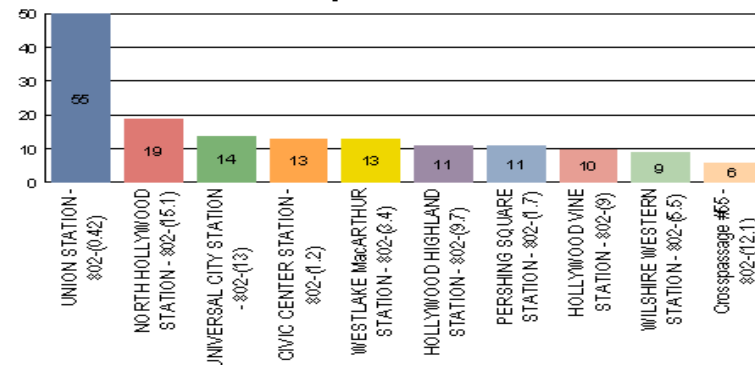


Red Line – April 2008

Count of the Top 10 Incident Problems

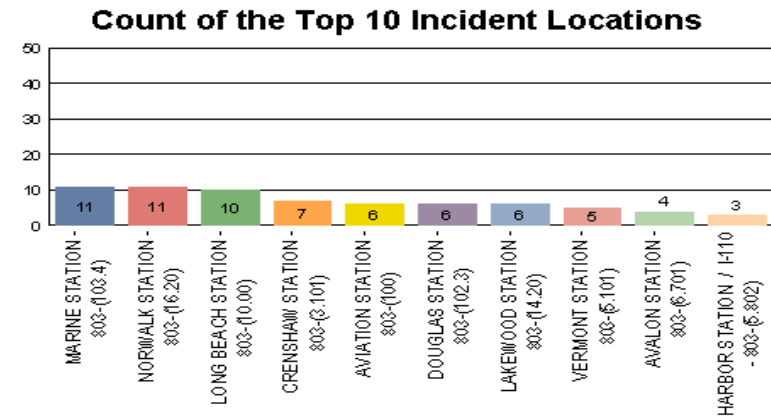
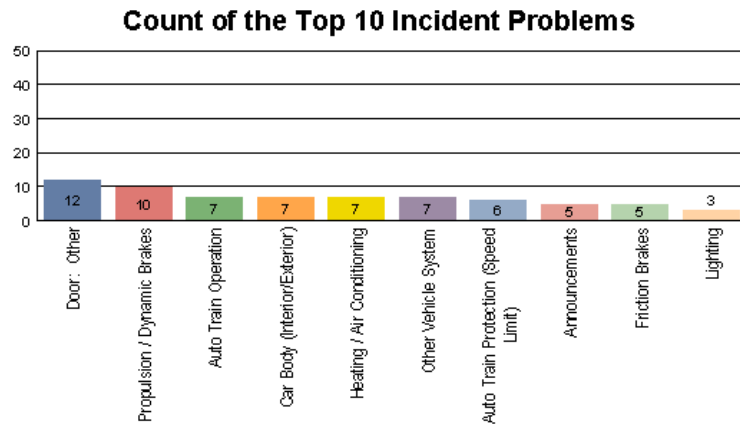


Count of the Top 10 Incident Locations

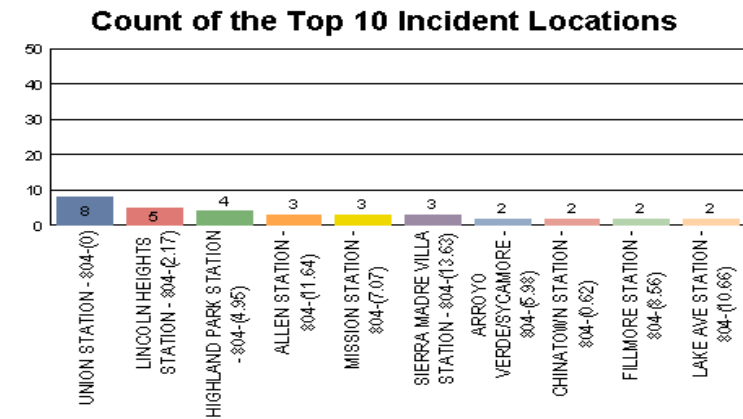
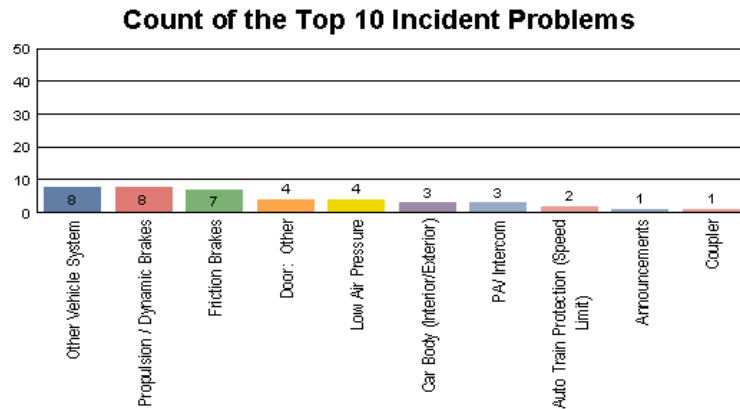


Incident Problems & Locations – Green & Gold Lines

Green Line - April 2008



Gold Line - April 2008



Preventative Maintenance Compliance

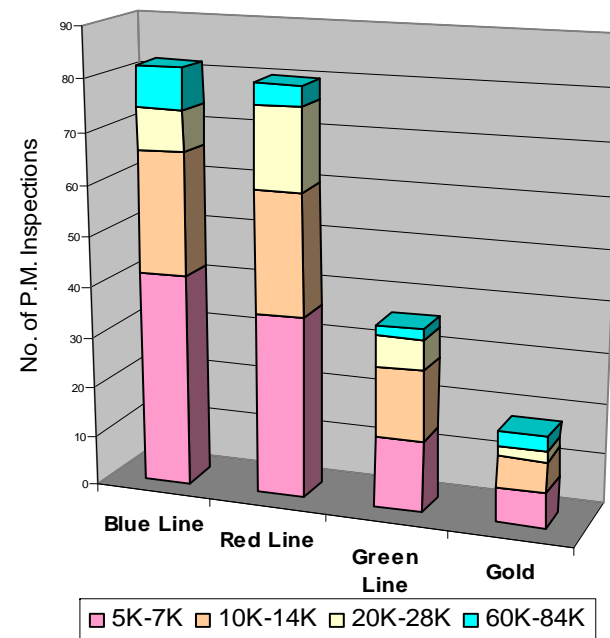
April 2008

	May-07	Jun-07	Jul-07	Aug-07	Sep-07	Oct-07	Nov-07	Dec-07	Jan-08	Feb-08	Mar-08	Apr-08
Blue Line	100%	100%	100%	100%	100%	100%	100%	100%	100%	100%	100%	100%
Red Line	100%	100%	100%	100%	100%	100%	100%	99%	100%	100%	100%	100%
Green Line	100%	100%	100%	100%	100%	100%	100%	100%	95%	100%	100%	100%
Gold Line	100%	100%	100%	100%	100%	100%	100%	100%	100%	100%	100%	100%

April 2008 Preventative Maintenance Inspections

No. of P.M. Inspections	5K	10K	20K	60K	Totals
Blue Line	42	24	8	8	82

No. of P.M. Inspections	7K	14K	28K	84K	Totals
Red Line	36	24	16	4	80
Green Line	14	8	6	2	30
Gold Line	12	6	2	3	23



Vandalism & Graffiti Report

April 2008

	May-07	Jun-07	Jul-07	Aug-07	Sep-07	Oct-07	Nov-07	Dec-07	Jan-08	Feb-08	Mar-08	Apr-08	Year To Date
Blue Line	\$22,571	\$33,340	\$41,364	\$41,364	\$54,873	\$68,406	\$78,067	\$84,209	\$69,383	\$67,624	\$27,270	\$33,717	\$622K
Red Line	\$17,357	\$21,464	\$11,906	\$11,906	\$11,645	\$9,355	\$15,156	\$13,231	\$16,100	\$17,874	\$18,388	\$17,477	\$182K
Green Line	\$25,863	\$28,478	\$32,716	\$33,547	\$44,227	\$33,832	\$37,022	\$37,495	\$31,632	\$28,564	\$41,259	\$36,670	\$411K
Gold Line	\$9,778	\$4,347	\$4,840	\$5,992	\$4,980	\$4,980	\$6,416	\$11,638	\$2,030	\$4,715	\$13,544	\$14,864	\$85K
Totals	\$75,569	\$87,629	\$90,826	\$92,809	\$115,725	\$113,442	\$136,661	\$146,573	\$119,145	\$118,777	\$100,461	\$102,728	\$1.3M

April 2008 Vandalism & Graffiti

Windows replaced: 82 @ \$10,324

Vandal Shields replaced: 815 @ \$17,765

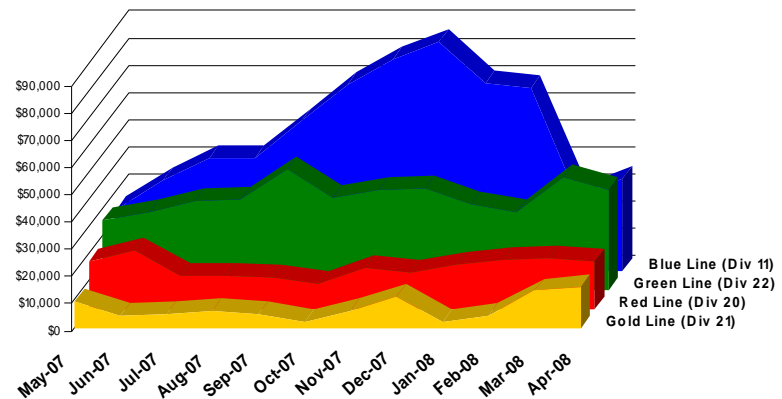
Seats cleaned: 5,541

Seats replaced: 60 @ \$3,465

Ext./Int. repairs: \$4,350

Labor = \$64,557

Total for April 2008: \$102,728



Vandalism & Graffiti Pictures

April 2008



Gold Line



Green Line



Red Line



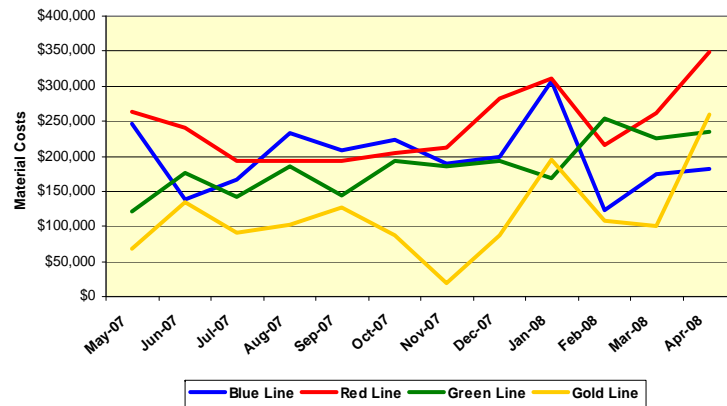
Blue Line

Material and Labor Costs

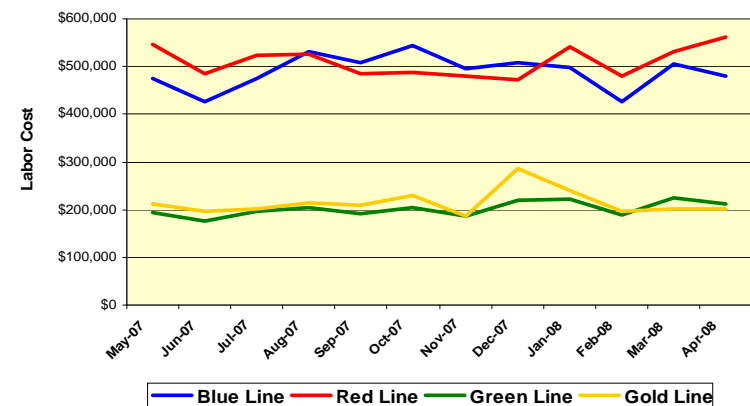
April 2008

Material Costs	May-07	Jun-07	Jul-07	Aug-07	Sep-07	Oct-07	Nov-07	Dec-07	Jan-08	Feb-08	Mar-08	Apr-08
Blue Line	\$236K	\$109K	\$177K	\$209K	\$176K	\$224K	\$189K	\$200K	\$307K	\$123K	\$174K	\$181K
Red Line	\$595K	\$227K	\$180K	\$147K	\$209K	\$205K	\$212K	\$283K	\$311K	\$217K	\$261K	\$349K
Green Line	\$117K	\$164K	\$143K	\$181K	\$139K	\$193K	\$185K	\$132K	\$169K	\$254K	\$225K	\$235K
Gold Line	\$65K	\$121K	\$91K	\$100K	\$119K	\$88K	\$19K	\$154K	\$195K	\$107K	\$101K	\$260K
Totals	\$1,015K	\$620K	\$591K	\$638K	\$643K	\$710K	\$559K	\$768K	\$982K	\$701K	\$761K	\$1,025K

Material Costs



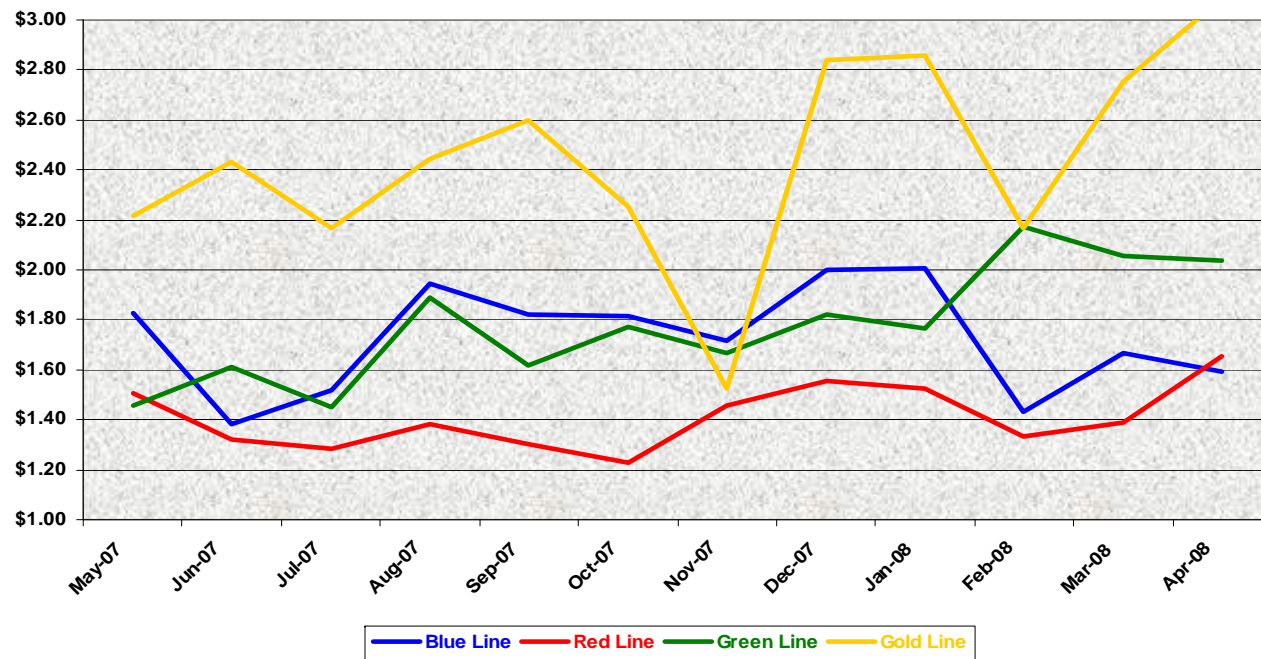
Labor Costs



Labor Costs	May-07	Jun-07	Jul-07	Aug-07	Sep-07	Oct-07	Nov-07	Dec-07	Jan-08	Feb-08	Mar-08	Apr-08
Blue Line	\$475K	\$427K	\$476K	\$532K	\$508K	\$545K	\$496K	\$508K	\$498K	\$426K	\$505K	\$479K
Red Line	\$548K	\$485K	\$523K	\$527K	\$485K	\$489K	\$479K	\$471K	\$542K	\$481K	\$530K	\$563K
Green Line	\$194K	\$177K	\$196K	\$204K	\$190K	\$204K	\$185K	\$220K	\$223K	\$190K	\$225K	\$211K
Gold Line	\$211K	\$196K	\$202K	\$214K	\$208K	\$229K	\$186K	\$235K	\$240K	\$196K	\$222K	\$202K
Totals	\$1,427K	\$1,286K	\$1,397K	\$1,477K	\$1,392K	\$1,466K	\$1,346K	\$1,484K	\$1,503K	\$1,293K	\$1,482K	\$2,479K

Cost Per Mile April 2008

Cost per mile:	May-07	Jun-07	Jul-07	Aug-07	Sep-07	Oct-07	Nov-07	Dec-07	Jan-08	Feb-08	Mar-08	Apr-08	Average
Blue Line	\$1.80	\$1.31	\$1.52	\$1.94	\$1.82	\$1.82	\$1.72	\$2.00	\$1.78	\$1.43	\$1.67	\$1.60	\$1.73
Red Line	\$2.12	\$1.29	\$1.28	\$1.38	\$1.30	\$1.23	\$1.28	\$1.56	\$1.52	\$1.33	\$1.39	\$1.65	\$1.41
Green Line	\$1.44	\$1.56	\$1.45	\$1.89	\$1.62	\$1.77	\$1.53	\$1.82	\$1.76	\$2.17	\$2.05	\$2.04	\$1.78
Gold Line	\$2.19	\$2.34	\$2.16	\$2.45	\$2.60	\$2.25	\$1.52	\$2.84	\$2.86	\$2.16	\$2.75	\$3.09	\$2.44



No facility costs are included

Capital Projects April 2008

Division Number/ Location	Project Number/Name	Description	LOP Budget	Amount Spent	Amount Remaining	Scheduled Completion Date	New Projected Completion Date	Comments/Reason
Division 11 Blue Line	204009 – Improvements	Main Shop & Car Wash Extension	\$17,385,500	\$16,860,376	\$533,720	1/31/08	Open	Basic Contract Closeout. Change in scope – Traction Power engineering reviewing catwalk gate alarm specs.
Division 21 Gold Line	204017 – Improvements	Historic Aqueduct	\$4,500,000	\$1,694,986	2,803,054	5/23/08	9/30/08	Awaiting National Historic Registry. Wilbur Babb is coordinating. Should close out about 9/15/08.
Division 22 Green Line	204037 – Improvements Phase 2	Wheel True Pit & Machine. Crossover Train Control	\$4,895,000	\$3,344,927	\$1,538,596	3/07/08	1/07/09	WTM Pit will go to Closeout after WTM installation. Awaiting WTM delivery on 5/21/08. Crossover Train Control Closeout after Systra delivers As built drawings.
Division 20 Red Line	204047 – Car Wash & Cleaning Platform	Car Wash & Cleaning Platform	\$15,400,000	\$482,305	\$14,885,231	3/03/08	5/17/10	Material Readiness Review meeting was held on 4/30/08. Procurement to place ads for bidders about mid-May.
Division 21 Gold Line	204053 – Improvements Phase 2	Body Shop, Cleaning Platforms Improvements	\$5,000,000	\$559,441	\$4,436,240	3/31/08	9/25/09	Project redefined resulting in delay. Aspet Davidian is coordinating the new design.
Division 20 Red Line	204054 – Additional Hoists	Additional two double-pair Vehicle Hoists	\$4,250,000	\$2,381,888	\$1,862,574	6/30/08	5/12/09	Construction Manager Tom Lee has directed the contractor to resubmit their contract documents, which were disapproved by MTA.
Division 22 Green Line	204059 – Small Spray Paint Booth	Small Spray Paint Booth	\$150,000	\$81,762	\$63,417	5/16/08	10/08/09	\$100,000 ROM submitted & sent to Tom Zhao for action.

Rail Fleet Services Instruction

April 2008

Description	Status	Start	End	Course Hours	Student Count	Training Hours
Blue Line Training (Nippon Sharyo 865/2020 LRV):						
ETD BUSINESS WRITING SKILLS	Complete	4/30/2008	4/30/2008	3	1	3
Total Blue Line Training (Hours):						3
Red Line Training (Breda A650 HRV):						
FORKLIFT, OSHA REFRESHER	Complete	2/27/2008	4/30/2008	1	91	91
NEW SERVICE ATTENDANT	Complete	4/1/2008	4/2/2008	16	1	16
NEW MAINTENANCE SPECIALIST INTRODUCTION	Complete	4/21/2008	4/30/2008	64	3	192
Total Red Line Training (Hours):						299
Green Line Training (Siemens 2000 LRV):						
INTERVIEWING TECHNIQUES	Complete	4/17/2008	4/17/2008	2	2	4
POWERPOINT 2003 - BEGINNER	Complete	4/23/2008	4/23/2008	6	1	6
Total Green Line Training (Hours):						10
Gold Line Training (Siemens 2000 LRV):						
Total Gold Line Training (Hours):						0
Total Rail Fleet Services Instruction for the month of April 2008 (Hours):						312.0

Other Projects being worked on by Instructors:

Between Car Barriers Light Beam Test - Gary Dewater
 ADA Door Entry Audio Alert - Gary Dewater
 Green Line Wheel True Machine Factory Test - Frank Pirillo
 Red Line Automated Announcements - Russell Homan

Core Vehicle Training Completed:	BLUE	RED	GREEN	GOLD
Percentage of core vehicle training complete:	99.2%	99.1%	92.9%	59.5%
AnsaldoBreda 2550 Training Completed:	3.0%	N/A	1.7%	15.8%
Average Specialist Rail Experience Level in Years:	9.3	7.8	7.1	6.5

