



# **Rail Fleet Services Monthly Report August, 2008**



**Metro**

# Table of Contents

- Safety
  - Industrial Injuries Page 1
  - Rail Vehicle Accidents & Major Incidents Page 2
- Customer Service
  - Service Delivery – AM/PM Pull-Outs Page 3
  - Vehicle Utilization – Blue Line & Green Line Page 4
  - Vehicle Utilization – Red Line & Gold Line Page 5
  - Mean Miles Between Failures (Major) Page 6
  - Repeater Car Details Page 7
  - Metro Rail Reliability Page 8
- Business Processes
  - Incident Problems Page 9
  - Preventative Maintenance Compliance Page 10
- Finance
  - Vandalism & Graffiti Costs Page 11
  - Graffiti Pictures Page 12
  - Material & Labor Costs Page 13
  - Cost per mile Page 14
  - Capital Projects Page 15
- Growth
  - Rail Fleet Service Training Page 16

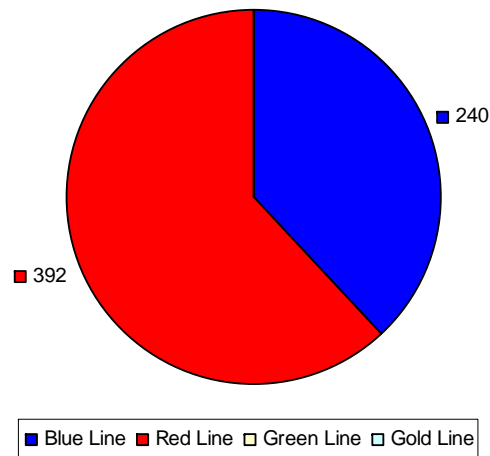
# Industrial Injuries – Lost Work Hours

## August 2008

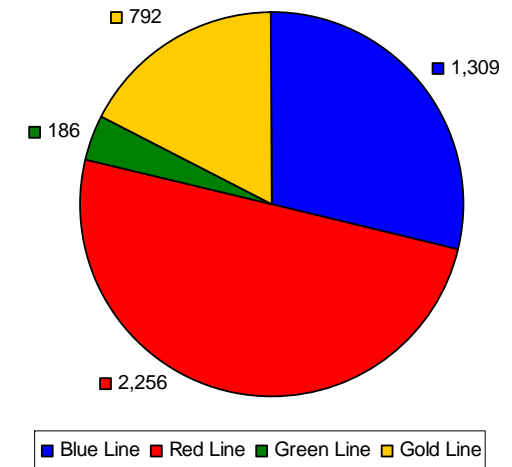
	Sep-07	Oct-07	Nov-07	Dec-07	Jan-08	Feb-08	Mar-08	Apr-08	May-08	Jun-08	Jul-08	Aug-08	Year to Date
Blue Line	48	160	160	133	16	0	80	48	160	112	152	240	1,309
Red Line	160	184	152	0	0	184	80	48	368	344	344	392	2,256
Green Line	0	2	0	0	160	24	0	0	0	0	0	0	186
Gold Line	312	80	160	176	64	0	0	0	0	0	0	0	792
Totals	520	426	472	309	240	208	160	96	528	456	496	632	4,543

	Employees		August 2008 Lost Work Hours		
	Assigned	Active	Service Attendants	Maint. Specialists	August 2008 Total Hours
Blue Line	112	105	96	144	240
Red Line	110	107	392	0	392
Green Line	47	46	0	0	0
Gold Line	45	43	0	0	0
Totals	314	301	488	144	632
Total Lost Work Hours for 12-months = 4,543 hours					

August 2008 - Lost Work Hours



Year-to-Date Lost Work Hours



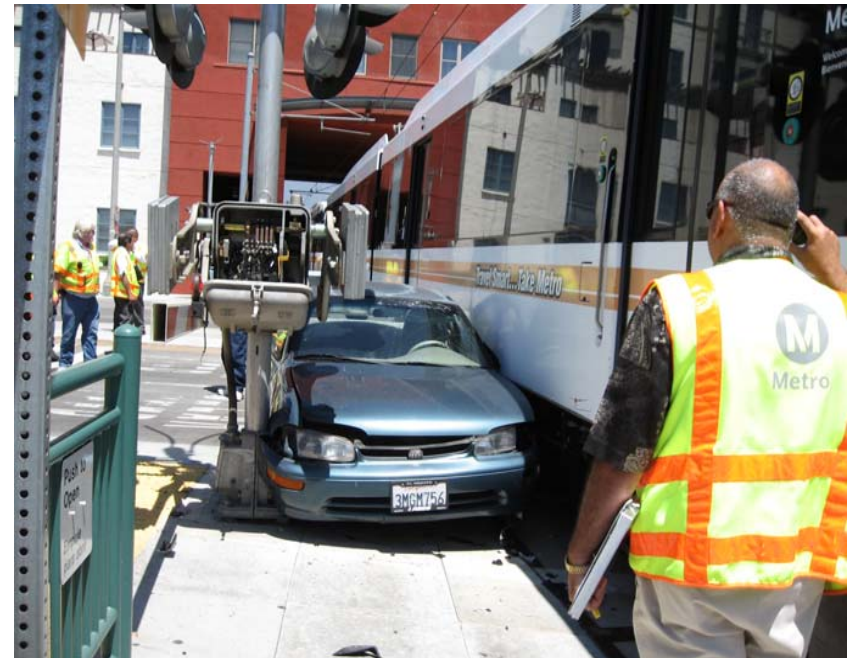
# Rail Vehicle Accidents & Major Incidents

## August 2008

	Sep-07	Oct-07	Nov-07	Dec-07	Jan-08	Feb-08	Mar-08	Apr-08	May-08	Jun-08	Jul-08	Aug-08	Totals
Blue Line	\$7,532	\$0	\$4,661	\$4,489	\$8,500	\$497	\$4,235	\$1,789	\$2,473	\$1,412	\$14,603	\$7,308	\$57,499
Red Line	\$0	\$0	\$203	\$0	\$0	\$0	\$274	\$0	\$0	\$418	\$0	\$3,127	\$4,022
Green Line	\$0	\$0	\$6,036	\$0	\$0	\$289	\$0	\$0	\$0	\$0	\$0	\$0	\$6,325
Gold Line	\$33,925	\$34,189	\$0	\$326	\$340	\$18,388	\$0	\$0	\$0	\$0	\$0	\$3,504	\$90,672
Totals	\$41,457	\$34,189	\$10,900	\$4,815	\$8,840	\$19,174	\$4,509	\$1,789	\$2,473	\$1,830	\$14,603	\$13,939	\$158,518

Rail Vehicle Accident Costs - August, 2008			
2008	Problem code	Incident Description	Cost
August 4	Train vs. Other	Missile strikes Train. Train 8 T-195. Car #(124A)-108-148. North of Florence. Track #1. Broken Windshield.	\$1,380
August 4	Train vs. Other	Missile strikes Train. Train 5 T-227. Car #(111A)-139-118. North of Florence. Track #2. Cracked Windshield.	\$1,380
August 9	Train vs. Auto	Train 2 T-233 Cars (158A)-116-125, 4th St./Pacific. 10-73 Auto ran red light and left scene. No injuries. Minor damage.	\$3,469
August 10	Train vs. Auto	Train #10 T-186 Cars (125B)-116-158, 20th Street Track 1 north	\$1,079
Blue Line Total Repair Cost			\$7,308
August 11	Train vs. Auto	Car 233A involved in 10-73. Train 5, T-76 at Del Mar Grade Crossing. Track 2. Consist 233/241.	\$3,504
August 28	Train vs. Equipment	Train #7, 711/706 contact with broken gate at Avenue 45. No damage.	\$0
Gold Line Total Repair Cost			\$3,504
August 6	Train vs. Pedestrian	Train 55, T-172 reports 10-72 at 7th/Metro AR Track, Cars (567)568-563-564	\$3,127
Red Line Total Repair Cost			\$3,127

August 11, 2008 – Gold Line: Train vs. Auto Car 233A involved in 10-73. Train 5 in T-76 at Del Mar Grade Crossing. Track 2. Consist 233/242.



The monthly accident charges listed represent only the expenses incurred in that particular month and are not a total repair of an individual accident.

# Service Delivery – AM/PM Pull-Outs

## August 2008

### Cars Available for AM/PM Pull-Outs

#### Blue Line – Fleet Size 69 cars

- Weekday pull-out: 60 cars
- Weekend pull-out: 36 cars
- **Monthly Mileage: 413,739 miles**

#### Red Line - Fleet Size 104 cars

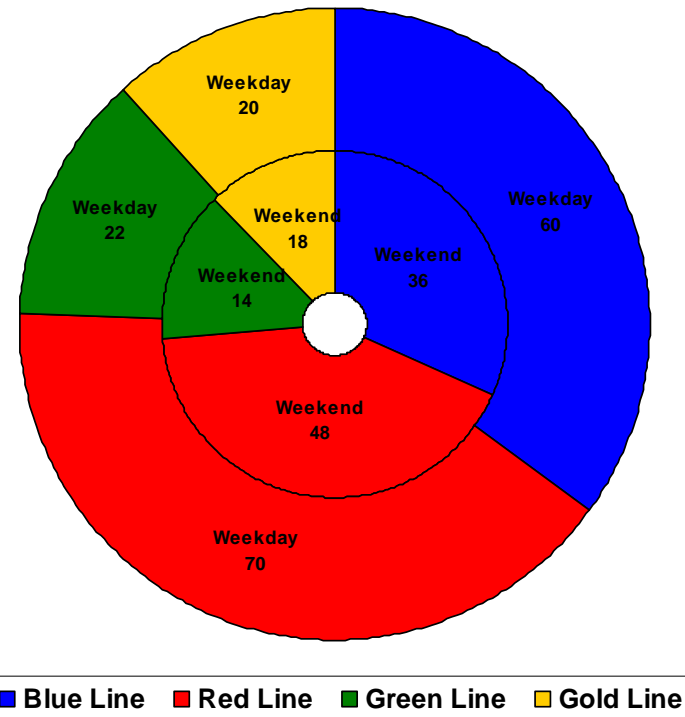
- Weekday pull-out: 70 cars
- Weekend pull-out: 48 cars
- **Monthly Mileage: 555,766 miles**

#### Green Line – Fleet Size 28 cars

- Weekday pull-out: 22 cars
- Weekend pull-out: 14 cars
- **Monthly Mileage: 230,522 miles**

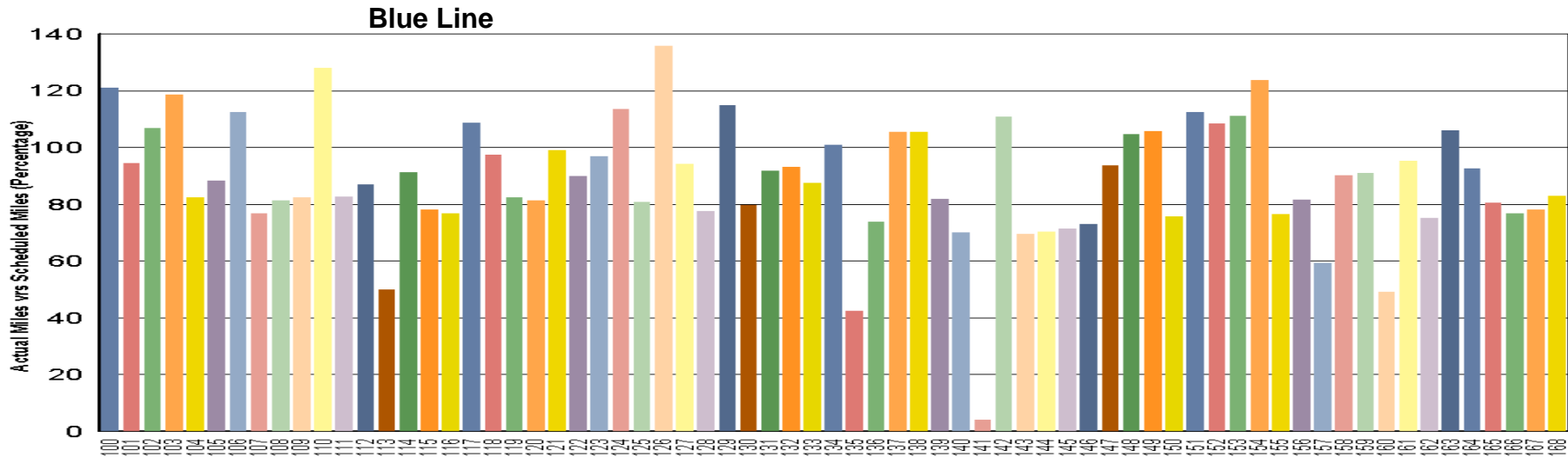
#### Gold Line – Fleet Size 24 cars

- Weekday pull-out: 20 cars
- Weekend pull-out: 18 cars
- **Monthly Mileage: 158,483 miles**



# VEHICLE UTILIZATION

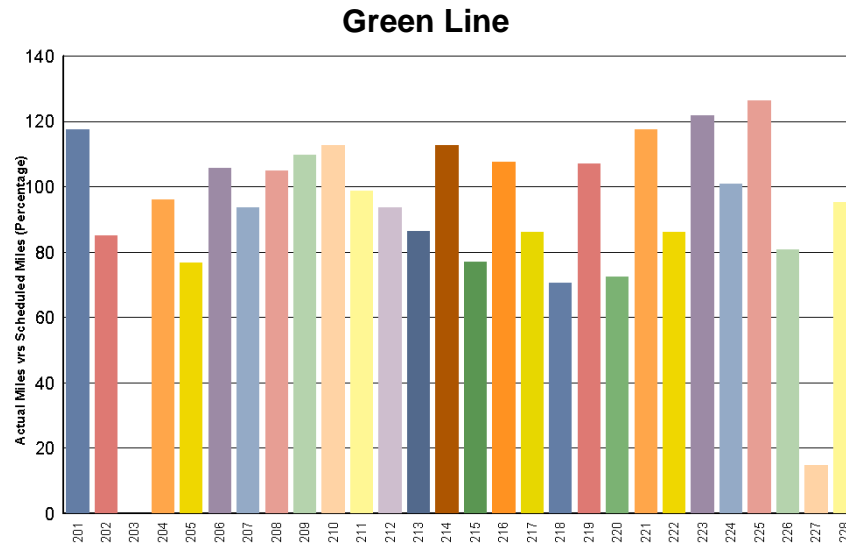
## August 1, 2008 to August 31, 2008



**Blue Line - Car 141 is out of service for floor repair so the other cars in the fleet must take up the slack (>100%).**

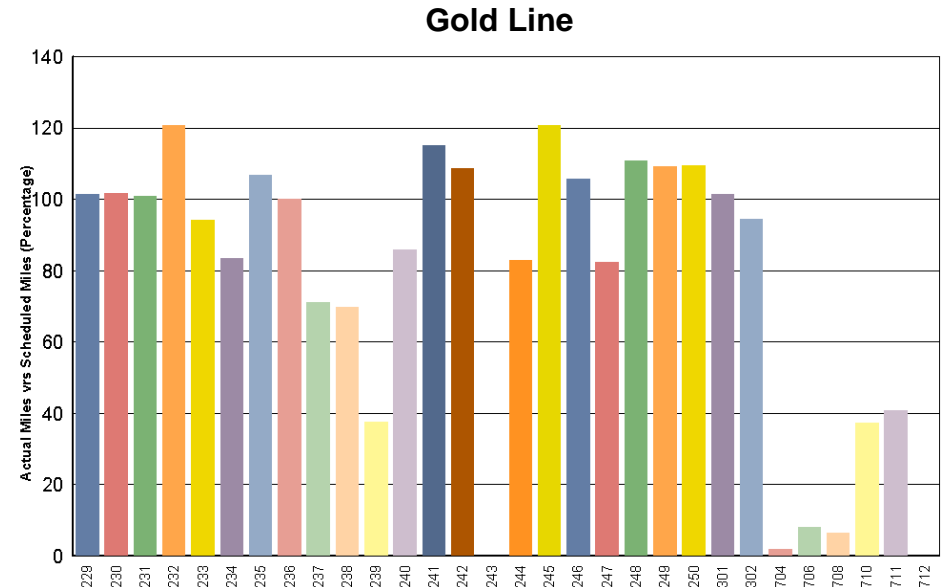
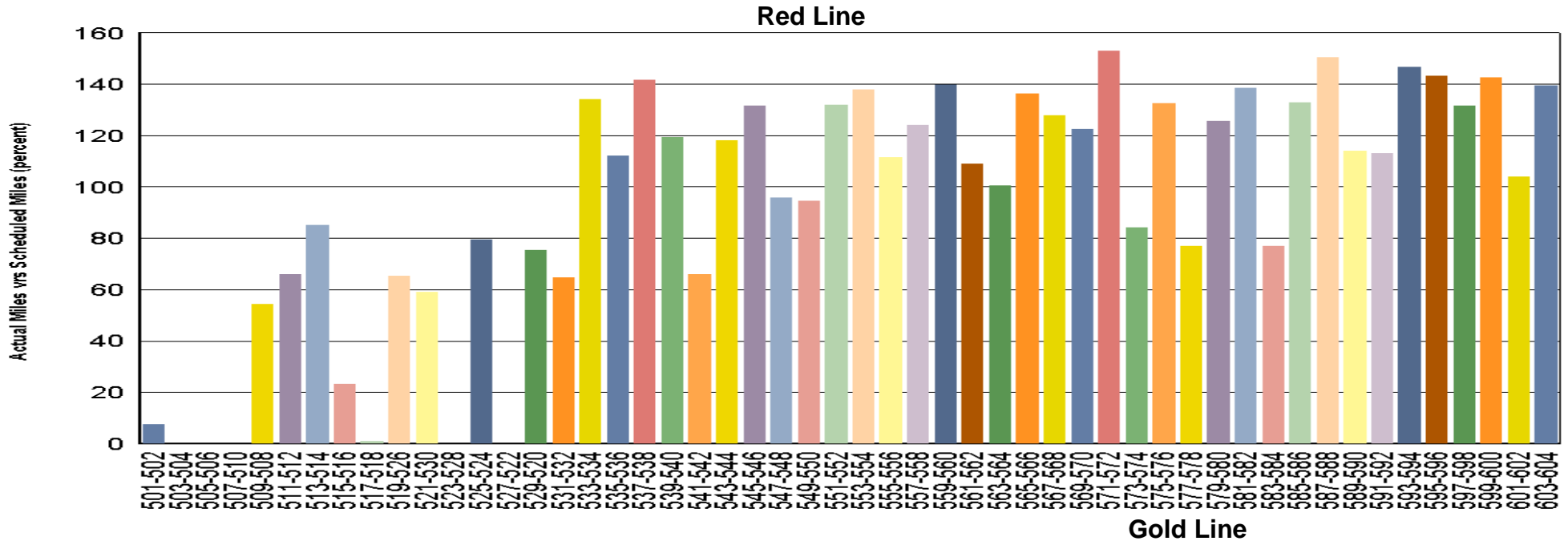
**Green Line - Car 203 is out of service for paint repair and 227 has been having ATO problems.**

**Percentage includes an average 4% mileage deduction for Yard mileage and Vehicle Testing.**



# VEHICLE UTILIZATION

## August 1, 2008 to August 31, 2008



**Red Line** - The original 30 Base Buy cars are not being used to their fullest potential so the remaining Option Buy cars are forced to pick up the slack.

**Gold Line** - Car 243 is in Sacramento having its fire damage repaired and the AnsaldoBreda cars are having some teething problems.

Percentage includes an average 4% mileage deduction for Yard mileage and Vehicle Testing

# Mean Miles Between Failures (Major)

## August 2008

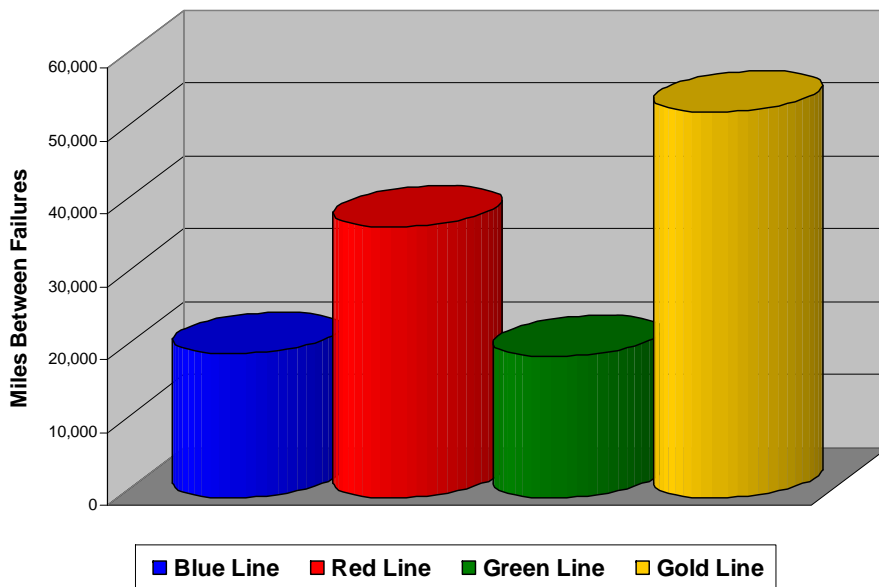
### Major Failures

Blue Line: 19,702 miles (21 Major Failures)

Red Line: 37,051 miles (15 Major Failures)

Green Line: 19,210 miles (12 Major Failures)

Gold Line: 52,828 miles (3 Major Failures)



**Major Failure:** When a train does not complete its scheduled run or is more than 5 minutes late of its scheduled arrival time.

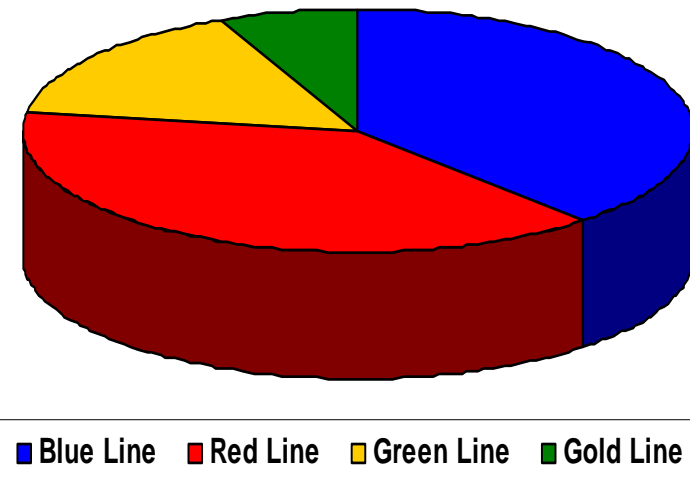
### Repeat Failures

Blue Line: 34 Repeat Failures

Red Line: 35 Repeat Failures

Green Line: 14 Repeat Failures

Gold Line: 6 Repeat Failures





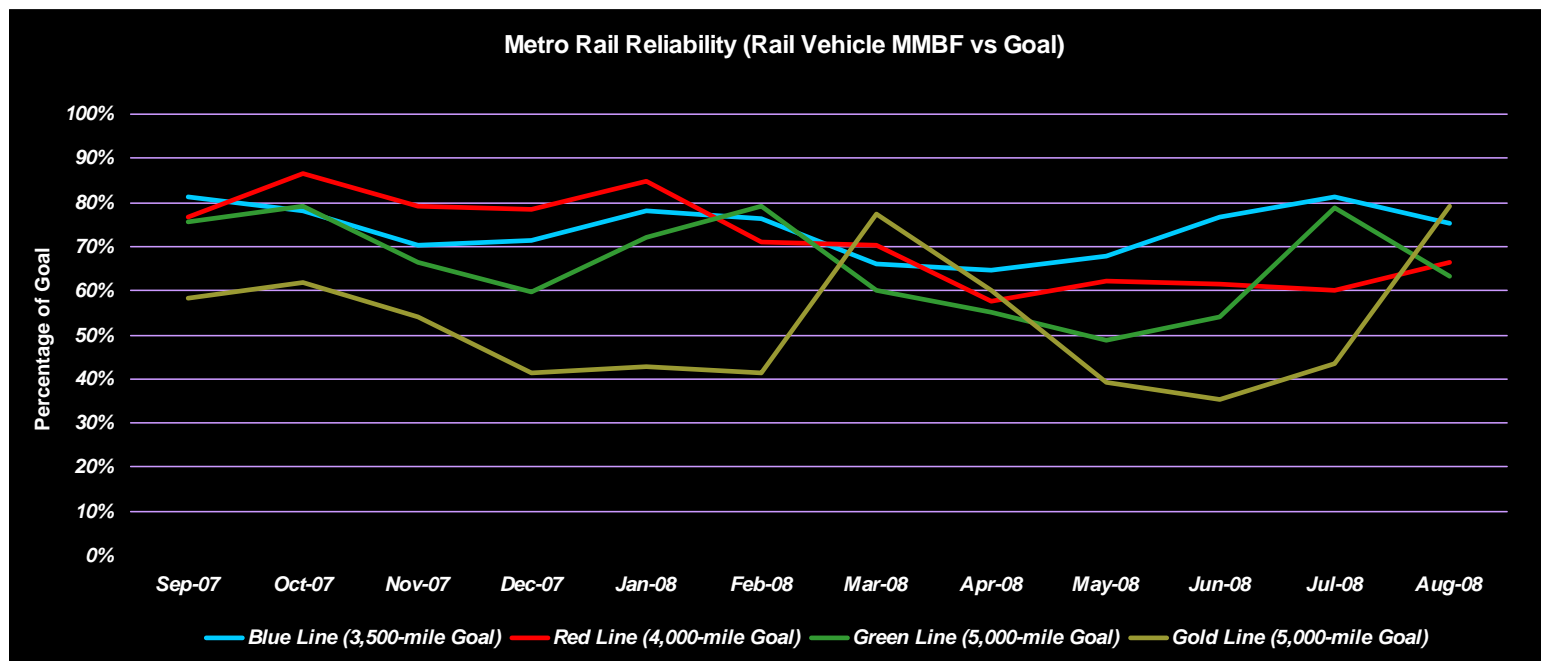
# Repeater Car Details

## August 2008

System	Blue Line		Red Line		Green Line		Gold Line	
	Car #	No. of Repeats	Car #	No. of Repeats	Car #	No. of Repeats	Car #	No. of Repeats
Announcements					226	1	250	1
ATO			537	1	209	1		
ATP	125	2			220	3	240	3
Doors	100	2	535	1				
	119	2	591	3				
	126	1	596	1				
	129	1						
	138	1						
	147	1						
	148	2						
	149	1						
	153	4						
	161	2						
	167	1						
Emergency Brakes in ATO			548	1				
			550	3				
			558	1				
			583	2				
Friction Brakes	142	1	531	1			234	1
	155	1	536	1				
			591	1				
HSCB			501	1				
			508	2				
Horn/Gong	164	1						
HVAC			525	1	202	3		
			530	1	205	1		
			536	1				
			540	1				
			544	1				
			559	2				
			574	1				
Propulsion/Dynamic Brake	101	1	520	1	207	1	301	1
	104	1	521	1	218	1		
	108	1	529	1				
	115	1						
	133	1						
	135	1						
	138	1						
	144	1						
PA/Intercom			548	1				
			595	1				
Radio	114	1			206	3		
Trucks/Wheels/Flats	104	1	512	1				
	136	1	531	1				
			532	1				
TOTALS		34		35		14		6

# Metro Rail Reliability

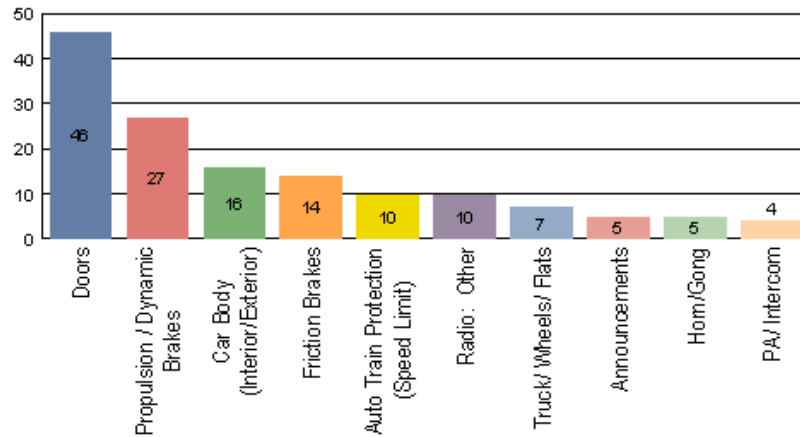
	Sep-07	Oct-07	Nov-07	Dec-07	Jan-08	Feb-08	Mar-08	Apr-08	May-08	Jun-08	Jul-08	Aug-08
Blue Line Rail Vehicle Incidents	137	155	161	159	147	143	176	178	173	149	148	156
Blue Line Scheduled Monthly Mileage	389,299	423,395	396,981	398,168	402,556	382,656	406,275	401,881	410,888	400,058	421,632	411,301
Blue Line MMBF	2,842	2,732	2,466	2,504	2,738	2,676	2,308	2,258	2,375	2,685	2,849	2,637
Blue Line (3,500-mile Goal)	81%	78%	70%	72%	78%	76%	66%	65%	68%	77%	81%	75%
Red Line Rail Vehicle Incidents	163	155	163	166	158	175	192	228	212	209	221	199
Red Line Scheduled Monthly Mileage	500,632	537,311	515,266	521,889	535,220	496,907	539,274	524,452	528,698	513,141	532,394	529,268
Red/Purple Line MMBF	3,071	3,467	3,161	3,144	3,387	2,839	2,809	2,300	2,494	2,455	2,409	2,660
Red Line (4,000-mile Goal)	77%	87%	79%	79%	85%	71%	70%	58%	62%	61%	60%	66%
Green Line Rail Vehicle Incidents	55	57	64	72	62	53	73	79	90	78	55	68
Green Line Scheduled Monthly Mileage	207,505	225,861	212,749	215,515	223,068	209,648	219,499	218,303	219,499	211,045	217,035	214,560
Green Line MMBF	3,773	3,962	3,324	2,993	3,598	3,956	3,007	2,763	2,439	2,706	3,946	3,155
Green Line (5,000-mile Goal)	75%	79%	66%	60%	72%	79%	60%	55%	49%	54%	79%	63%
Gold Line Rail Vehicle Incidents	45	46	50	69	73	69	39	49	76	83	70	38
Gold Line Scheduled Monthly Mileage	131,104	141,889	135,554	142,976	155,907	143,185	151,044	147,591	149,693	146,598	152,075	150,466
Gold Line MMBF	2,913	3,085	2,711	2,072	2,136	2,075	3,873	3,012	1,970	1,766	2,173	3,960
Gold Line (5,000-mile Goal)	58%	62%	54%	41%	43%	42%	77%	60%	39%	35%	43%	79%



# Incident Problems

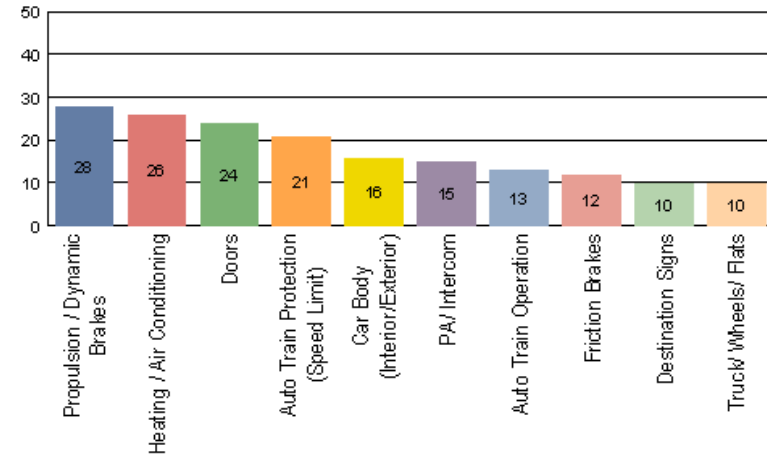
## Blue Line – August 2008

Count of the Top 10 Incident Problems



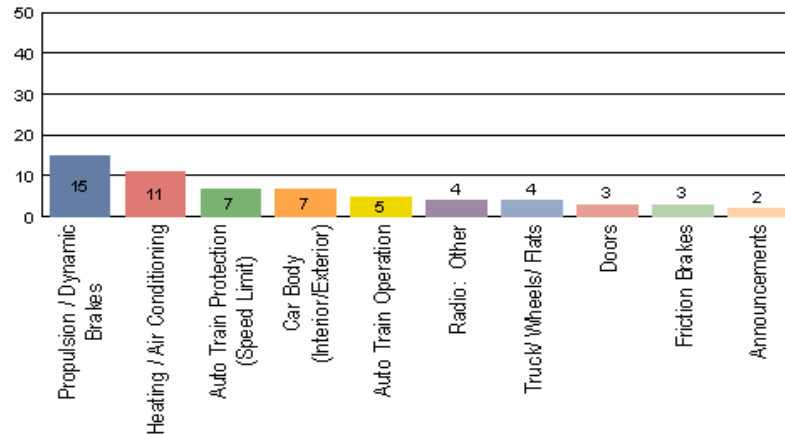
## Red Line – August 2008

Count of the Top 10 Incident Problems



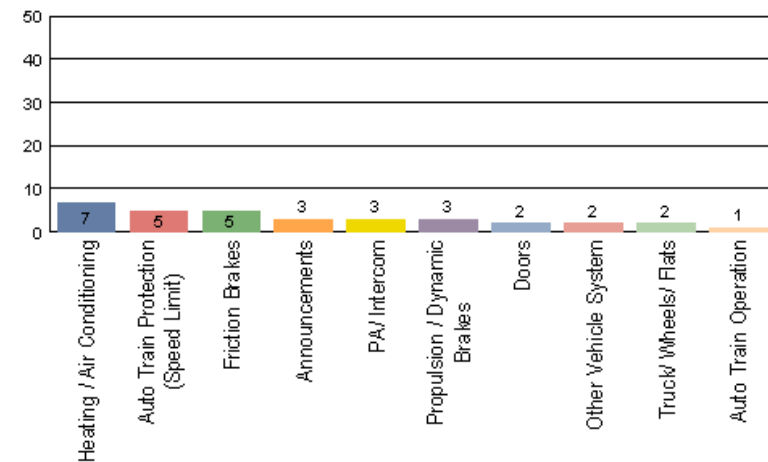
## Green Line - August 2008

Count of the Top 10 Incident Problems



## Gold Line - August 2008

Count of the Top 10 Incident Problems



# Preventative Maintenance Compliance

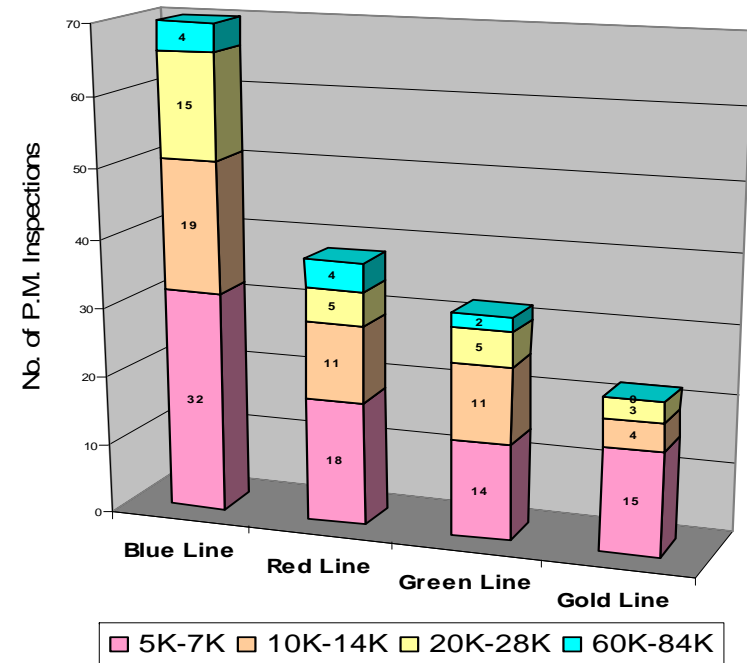
## August 2008

	Sep-07	Oct-07	Nov-07	Dec-07	Jan-08	Feb-08	Mar-08	Apr-08	May-08	Jun-08	Jul-08	Aug-08
Blue Line	100%	100%	100%	100%	100%	100%	100%	100%	100%	97%	100%	100%
Red Line	100%	100%	100%	99%	100%	100%	100%	100%	100%	80%	100%	100%
Green Line	100%	100%	100%	100%	95%	100%	100%	100%	100%	100%	100%	100%
Gold Line	100%	100%	100%	100%	100%	100%	100%	100%	100%	100%	100%	100%

### August 2008 Preventative Maintenance Inspections

No. of P.M. Inspections	5K	10K	20K	60K	Totals
Blue Line	32	19	15	4	70

No. of P.M. Inspections	7K	14K	28K	84K	Totals
Red Line	18	11	5	4	38
Green Line	14	11	5	2	32
Gold Line	15	4	3	0	22

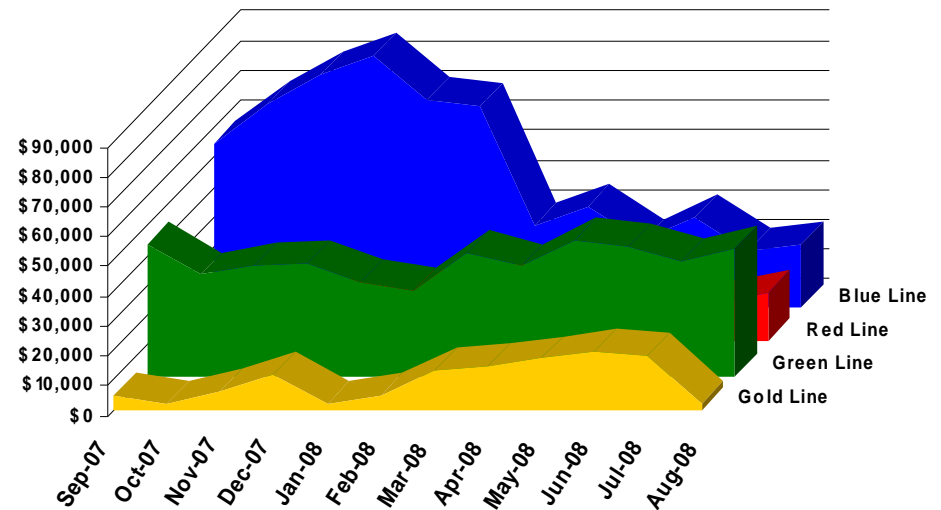


# Vandalism & Graffiti Report

## August 2008

	Sep-07	Oct-07	Nov-07	Dec-07	Jan-08	Feb-08	Mar-08	Apr-08	May-08	Jun-08	Jul-08	Aug-08	Year-to-Date
Blue Line	\$54,873	\$68,406	\$78,067	\$84,209	\$69,383	\$67,624	\$27,270	\$33,717	\$22,258	\$30,483	\$19,055	\$21,297	\$576,642
Red Line	\$11,645	\$9,355	\$15,156	\$13,231	\$16,100	\$17,874	\$18,388	\$17,477	\$15,881	\$15,127	\$13,153	\$16,728	\$180,115
Green Line	\$44,227	\$33,832	\$37,022	\$37,495	\$31,632	\$28,564	\$41,259	\$36,670	\$45,594	\$43,424	\$38,306	\$42,483	\$460,508
Gold Line	\$4,980	\$1,849	\$6,416	\$11,638	\$2,030	\$4,715	\$13,544	\$14,864	\$17,174	\$19,888	\$17,978	\$2,372	\$117,448
Totals	\$115,725	\$113,442	\$136,661	\$146,573	\$119,145	\$118,777	\$100,461	\$102,728	\$100,907	\$108,922	\$88,492	\$82,880	\$1,334,713

August 2008 Vandalism & Graffiti - All Rail				
	Qty	Labor	Materials	Totals
Windows replaced	45	\$3,528	\$5,459	\$8,987
Vandal Shields	526	\$10,165	\$8,516	\$18,681
Seats Cleaned	7,072	\$6,069	0	\$6,069
Seats Replaced	108	\$3,476	\$4,292	\$7,768
Ext/Int Repairs	1,332	\$15,946	\$0	\$15,946
End Cabs Cleaned	6	\$756	\$30	\$786
Labor	412	\$12,600	\$12,044	\$24,644
Totals for August 2008	0	\$52,539	\$30,341	\$82,880



# Vandalism & Graffiti Pictures

## August, 2008

A



B



A - Red Line

B - Blue Line

C - Green Line

D - Gold Line



C



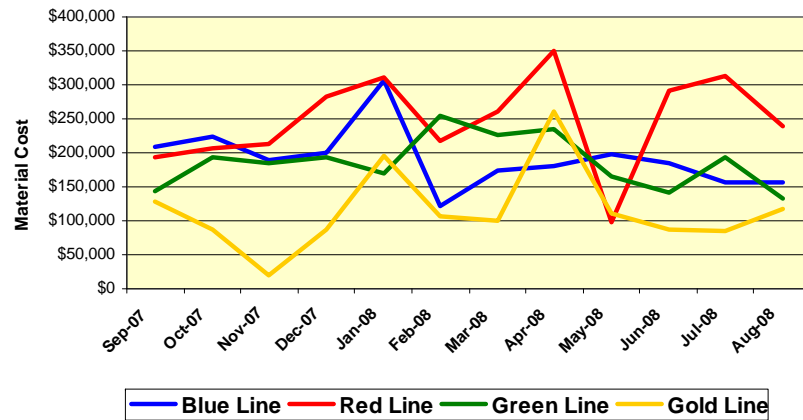
D

# Material and Labor Costs

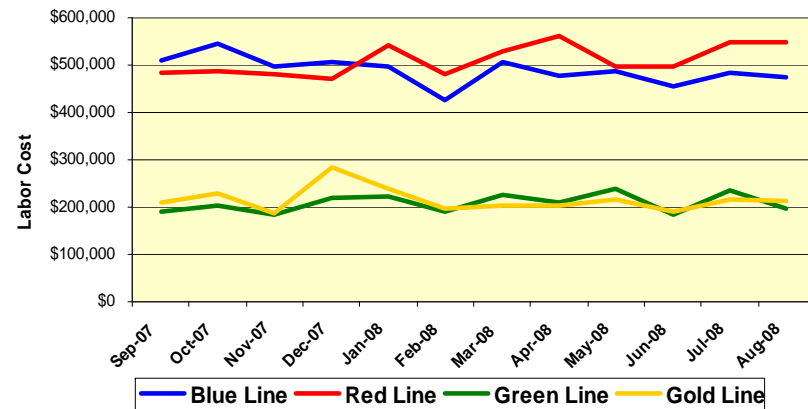
## August 2008

Material Costs	Sep-07	Oct-07	Nov-07	Dec-07	Jan-08	Feb-08	Mar-08	Apr-08	May-08	Jun-08	Jul-08	Aug-08
Blue Line	\$176K	\$224K	\$189K	\$200K	\$307K	\$123K	\$174K	\$181K	\$197K	\$185K	\$157K	\$157K
Red Line	\$209K	\$205K	\$212K	\$283K	\$311K	\$217K	\$261K	\$349K	\$ 99K	\$292K	\$314K	\$240K
Green Line	\$139K	\$193K	\$185K	\$132K	\$169K	\$254K	\$225K	\$235K	\$166K	\$142K	\$194K	\$133K
Gold Line	\$119K	\$88K	\$19K	\$154K	\$195K	\$107K	\$101K	\$260K	\$110K	\$88K	\$85K	\$118K
Totals	\$643K	\$710K	\$559K	\$768K	\$982K	\$701K	\$761K	\$1,052K	\$572K	\$707K	\$750K	\$648K

**Material Costs**



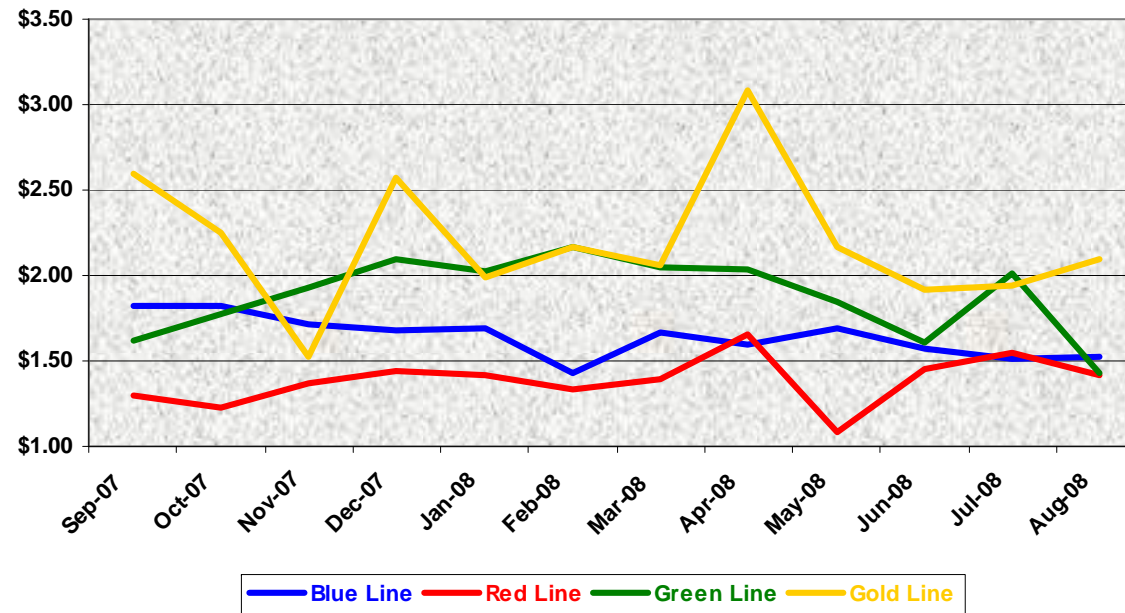
**Labor Costs**



Labor Costs	Sep-07	Oct-07	Nov-07	Dec-07	Jan-08	Feb-08	Mar-08	Apr-08	May-08	Jun-08	Jul-08	Aug-08
Blue Line	\$508K	\$545K	\$496K	\$508K	\$498K	\$426K	\$505K	\$479K	\$487K	\$454K	\$483K	\$473K
Red Line	\$485K	\$489K	\$479K	\$471K	\$542K	\$481K	\$530K	\$563K	\$498K	\$496K	\$549K	\$548K
Green Line	\$190K	\$204K	\$185K	\$220K	\$223K	\$190K	\$225K	\$211K	\$239K	\$184K	\$237K	\$196K
Gold Line	\$208K	\$229K	\$186K	\$235K	\$240K	\$196K	\$222K	\$202K	\$216K	\$192K	\$217K	\$214K
Totals	\$1,392K	\$1,466K	\$1,346K	\$1,484K	\$1,503K	\$1,293K	\$1,482K	\$1,454K	\$1,440K	\$1,326K	\$1,486K	\$1,431K

# Cost Per Mile August 2008

Cost per mile:	Sep-07	Oct-07	Nov-07	Dec-07	Jan-08	Feb-08	Mar-08	Apr-08	May-08	Jun-08	Jul-08	Aug-08	Average
Blue Line	\$1.82	\$1.82	\$1.72	\$2.00	\$1.78	\$1.43	\$1.67	\$1.60	\$1.69	\$1.58	\$1.51	\$1.52	\$1.64
Red Line	\$1.30	\$1.23	\$1.28	\$1.56	\$1.52	\$1.33	\$1.39	\$1.65	\$1.08	\$1.45	\$1.55	\$1.42	\$1.39
Green Line	\$1.62	\$1.77	\$1.53	\$1.82	\$1.76	\$2.17	\$2.05	\$2.04	\$1.84	\$1.61	\$2.01	\$1.43	\$1.88
Gold Line	\$2.60	\$2.25	\$1.52	\$2.84	\$2.86	\$2.16	\$2.75	\$3.09	\$2.17	\$1.91	\$1.94	\$2.10	\$2.20



No facility costs are included



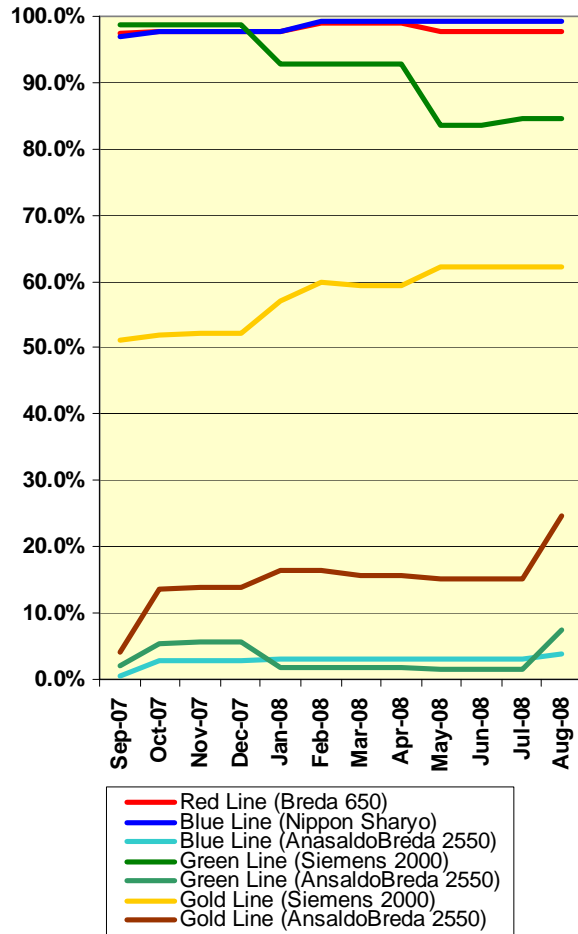
# Capital Projects

## August 2008

Division Number/ Location	Project Number/Name	Description	LOP Budget	Amount Spent	Amount Remaining	Scheduled Completion Date	New Projected Completion Date	Comments/Reason
Division 11 Blue Line	204009 - Improvements	Main Shop & Car Wash Extension	\$ 17,385,500	\$16,870,719	\$514,781	1/31/2008 Original SOW complete	Open for add- on work	MBL RFS is fabricating a gate alarm prototype (per TP design). If prototype is successful, the remaining 41 alarms will be made by MBL RFS.
Division 21 Gold Line	20417 - Improvements	Historic Aqueduct	\$ 4,500,000	\$3,674,859	\$825,141	05/23/08	09/30/08	Awaiting National Historic Registry response. Wilbur Babb is coordinating. Should close out about 11/15/08.
Division 22 Green Line	204037 - Improvements Ph 2	Wheel True Pit & Machine. Crossover Train Control	\$ 4,895,000	\$3,528,381	\$1,366,619	01/07/09	01/07/09	WTM Pit has gone to closeout. Final invoice & retention has been paid. Crossover Train Control also in closeout. WTM has been tested & conditionally accepted. Once parts inventory is completed, will begin closeout. Also need a new metal shavings hopper.
Division 20 Red Line	20407 - Car Wash & Cleaning Platform	Car Wash & Cleaning Platform	\$ 15,400,000	\$700,001	\$14,669,999	03/03/09	05/17/10	This CP has been acquired by Girish Roy & MTA Construction.
Division 21 Gold Line	204503 - Improvements Phase 2	Body Shop	\$ 5,000,000	\$648,673	\$4,351,327	02/10/11	02/10/11	This CP has been acquired by Girish Roy & MTA Construction.
Division 20 Red Line	204054 - Additional Hoists	Additional two double- pair vehicle hoists	\$ 4,250,000	\$2,442,607	\$1,807,393	06/30/08	05/12/09	Contractor completed excavating 2 pits on 8/22/08. 5 to 6 months until hoists are delivered to MRL shop.
Division 22 Green Line	204059 - Spray Paint Booth	Small Spray Paint Booth	\$ 350,000	\$126,828	\$223,172	05/16/08	10/08/09	This CP, per request of the new MGL manager, will be rescoped to enlarge & relocate the paint shop structure.

# Rail Fleet Services Instruction

## August 2008



Description	Status	Start	End	Course Hours	Student Count	Training Hours
<b>Blue Line Training (Nippon Sharyo P865/P2020 LRV):</b>						
HAZARD COMMUNICATION TRAINING	Complete	8/20/2008	8/20/2008	4	1	4
BLOODBORNE PATHOGENS	Complete	8/28/2008	8/28/2008	2	29	58
ETD EXCEPTIONAL CUSTOMER SERVICE	Complete	8/5/2008	8/5/2008	3	2	6
DISABILITIES AWARENESS TRAINING	Complete	8/19/2008	8/19/2008	2	1	2
MOP PROCUREMENT FOR PROJECT MANAGERS II	Complete	8/19/2008	8/19/2008	4	1	4
MOP PROCUREMENT FOR PROJECT MANAGERS I	Complete	8/12/2008	8/12/2008	4	1	4
Students attendings AB 2550 Training shown under Gold Ln	In Process	8/1/2008	8/29/2008	See Below	2	
<b>Total Blue Line Training (Hours):</b>						<b>78</b>
<b>Red Line Training (Breda A650 HRV):</b>						
RFS HRV RE-RAILING	Complete	8/6/2008	8/8/2008	8	6	48
BLOODBORNE PATHOGENS	Complete	8/27/2008	8/27/2008	2	4	8
HAZARD COMMUNICATION TRAINING	Complete	8/20/2008	8/20/2008	4	1	4
ETD STRESS MANAGEMENT	Complete	8/21/2008	8/21/2008	3	1	3
OPERATIONS COMPUTER PROGRAM	Complete	8/22/2008	8/22/2008	8	1	8
Students attendings AB 2550 Training shown under Gold Ln	In Process	8/1/2008	8/29/2008	See Below	1	
<b>Total Red Line Training (Hours):</b>						<b>71</b>
<b>Green Line Training (Siemens P2000 LRVs):</b>						
HAZARD COMMUNICATION TRAINING	Complete	8/20/2008	8/20/2008	4	2	8
NEW SERVICE ATTENDENT TRAINING	Complete	8/18/2008	8/29/2008	80	1	80
Students attendings AB 2550 Training shown under Gold Ln	Complete	8/1/2008	8/29/2008	See Below	3	
<b>Total Green Line Training (Hours):</b>						<b>88</b>
<b>Gold Line Training (P2550 &amp; P2000 LRVs):</b>						
RFS ANSALDOBREDA 2550 INTEGRATED DISPLAY	Complete	8/13/2008	8/14/2008	16	11	176
RFS ANSALDOBREDA 2550 VEHICLE SYSTEMS	Complete	8/11/2008	8/12/2008	16	11	176
RFS ANSALDOBREDA 2550 FRICTION BRAKES	Complete	8/4/2008	8/7/2008	32	11	352
RFS ANSALDOBREDA 2550 COMMUNICATIONS	Complete	7/30/2008	8/1/2008	24	11	264
RFS ANSALDOBREDA 2550 ATP & TWC	Complete	8/15/2008	8/19/2008	24	11	264
RFS ANSALDOBREDA 2550 LIGHTING	Complete	8/8/2008	8/8/2008	4	11	44
RFS ANSALDOBREDA 2550 DOORS	Complete	8/20/2008	8/21/2008	16	10	160
RFS ANSALDOBREDA 2550 COUPLER	Complete	8/22/2008	8/22/2008	8	10	80
RFS ANSALDOBREDA 2550 HIGH VOLTAGE	Complete	8/25/2008	8/25/2008	8	11	88
RFS ANSALDOBREDA 2550 PROPULSION	On Going	8/26/2008	8/29/2008	32	11	352
HAZARD COMMUNICATION TRAINING	Complete	8/20/2008	8/20/2008	4	1	4
<b>Total Gold Line Training (Hours):</b>						<b>1960</b>
<b>Total Rail Fleet Services Instruction for the month of August 2008 (Hours):</b>						<b>2,197.0</b>

### Other Projects being worked on by Instructors:

Review AnsaldoBreda 2550 Maintenance Manuals - Doug Witke  
Red Line Automated Announcements - Russell Homan

Core Vehicle Training Completed:	BLUE	RED	GREEN	GOLD
Percentage of core vehicle training complete:	99.2%	97.6%	84.7%	62.3%
AnsaldoBreda 2550 Training Completed:	3.8%	N/A	7.4%	24.8%
Average Specialist Rail Experience Level in Years:	9.7	8.0	7.0	6.7