



# **Rail Fleet Services Monthly Report December 2008**



**Metro**

# Table of Contents

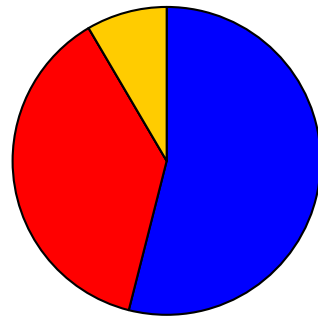
• Safety	
– Industrial Injuries	Page 1
– Rail Vehicle Accidents & Major Incidents	Page 2
• Customer Service	
– Service Delivery – AM/PM Pull-Outs	Page 3
– Vehicle Utilization – Blue Line & Green Line	Page 4
– Vehicle Utilization – Red Line & Gold Line	Page 5
– Mean Miles Between Failures (Major)	Page 6
– Repeaters (Major)	Page 7
– Metro Rail Reliability	Page 8
• Business Processes	
– Incident Problems	Page 9
– Preventative Maintenance Compliance	Page 10
• Finance	
– Vandalism & Graffiti Costs	Page 11
– Graffiti Pictures	Page 12
– Material & Labor Costs	Page 13
– Cost per mile	Page 14
• Growth	
– Rail Fleet Service Training	Page 15
– Absences vs. Overtime	Page 16

# Industrial Injuries – Lost Work Hours

## December 2008

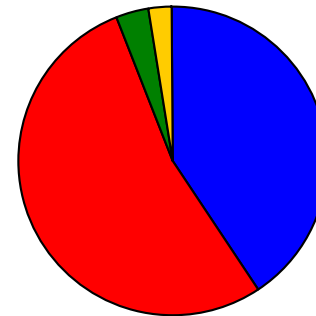
	Jan-08	Feb-08	Mar-08	Apr-08	May-08	Jun-08	Jul-08	Aug-08	Sep-08	Oct-08	Nov-08	Dec-08	Year to Date
Blue Line	16	0	80	48	160	112	152	240	320	352	328	512	2,320
Red Line	0	184	80	48	368	344	344	392	264	352	328	360	3,064
Green Line	160	24	0	0	0	0	0	0	0	0	0	0	184
Gold Line	64	0	0	0	0	0	0	0	0	0	0	80	144
Totals	240	208	160	96	528	456	496	632	584	704	656	952	5,712

December 2008 - Lost Work Hours



■ Blue Line ■ Red Line ■ Green Line ■ Gold Line

Year-to-Date Lost Work Hours



■ Blue Line ■ Red Line ■ Green Line ■ Gold Line

	Employees		December 2008 Lost Work Hours		
	Assigned	Active	Service Attendant	Maint. Specialist	December 2008 Total Hours
Blue Line	111	105	184	328	512
Red Line	108	102	360	0	360
Green Line	47	46	0	0	0
Gold Line	48	45	0	80	80
Totals	314	302	544	408	952
Total Lost Work Hours for 12-months = 5,069 hours					

# Rail Vehicle Accidents & Major Incidents

## December 2008

	Jan-08	Feb-08	Mar-08	Apr-08	May-08	Jun-08	Jul-08	Aug-08	Sep-08	Oct-08	Nov-08	Dec-08	Totals
Blue Line	\$8,500	\$497	\$4,235	\$1,789	\$2,473	\$1,412	\$14,603	\$7,308	\$55,579	\$1,672	\$1,312	\$20,456	\$119,836
Red Line	\$0	\$0	\$274	\$0	\$0	\$418	\$0	\$3,127	\$0	\$0		\$0	\$3,819
Green Line	\$0	\$289	\$0	\$0	\$0	\$0	\$0	\$0	\$15,758	\$0	\$4,181	\$0	\$20,228
Gold Line	\$340	\$18,388	\$0	\$0	\$0	\$0	\$0	\$3,504	\$0	\$0		\$0	\$22,232
Totals	\$8,840	\$19,174	\$4,509	\$1,789	\$2,473	\$1,830	\$14,603	\$13,939	\$71,337	\$1,672	\$5,493	\$20,456	\$166,115



Damage to Overhead Contact wire from accident

Rail Vehicle Accident Costs - December, 2008			
2008	Problem code	Incident Description	Cost
December 9	Train vs. Auto Blue Line	Train #6 Track 2 T-195 car 154A-149-111 made contact with left side mirror of truck in left turn lane.	\$189
December 20	Equipment Blue Line	Car #112 involved in the Panto damaged by catenary @ Transit Mall	\$20,010
December 30	Train vs. Equipment Blue Line	Train 3 at Pico Switch, track 2, car 102, Auto turned left in front of train, damage to skirt & support. Post accident Investigation.	\$257
Blue Line Total Repair Cost			\$20,456
Green Line Total Repair Costs			\$0
No accidents for Red & Gold Lines			\$0

*The monthly accident charges listed represent only the expenses incurred in that particular month and are not a total repair of an individual accident.*

# Service Delivery – AM/PM Pull-Outs

## December 2008

### Cars Available for AM/PM Pull-Outs

#### Blue Line – Fleet Size 69 cars

- Weekday pull-out: 60 cars
- Weekend pull-out: 36 cars
- **Monthly Mileage: 412,565 miles**

#### Red Line - Fleet Size 104 cars

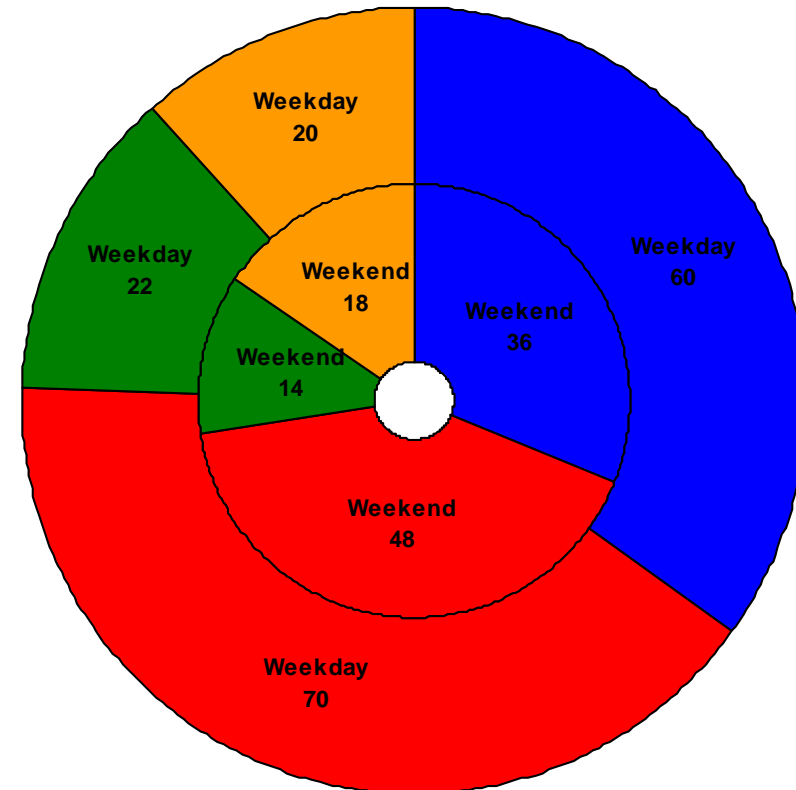
- Weekday pull-out: 70 cars
- Weekend pull-out: 48 cars
- **Monthly Mileage: 563,404 miles**

#### Green Line – Fleet Size 28 cars

- Weekday pull-out: 22 cars
- Weekend pull-out: 14 cars
- **Monthly Mileage: 231,429 miles**

#### Gold Line – Fleet Size 34 cars

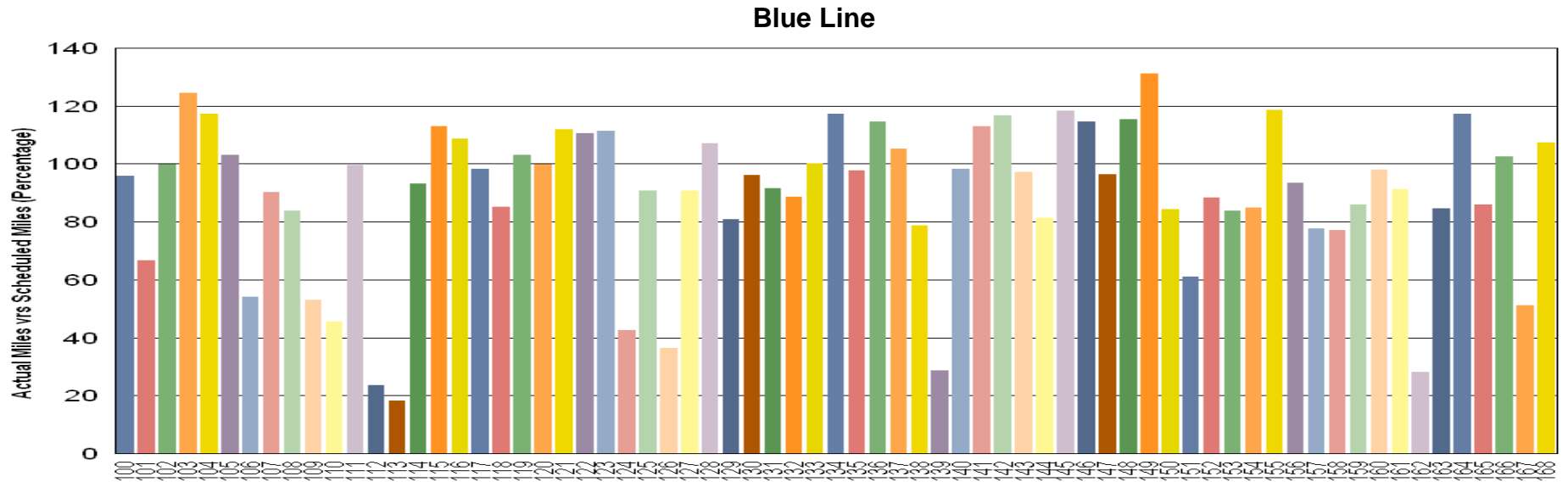
- Weekday pull-out: 20 cars
- Weekend pull-out: 18 cars
- **Monthly Mileage: 158,405 miles**



■ Blue Line   ■ Red Line   ■ Green Line   ■ Gold Line

# VEHICLE UTILIZATION

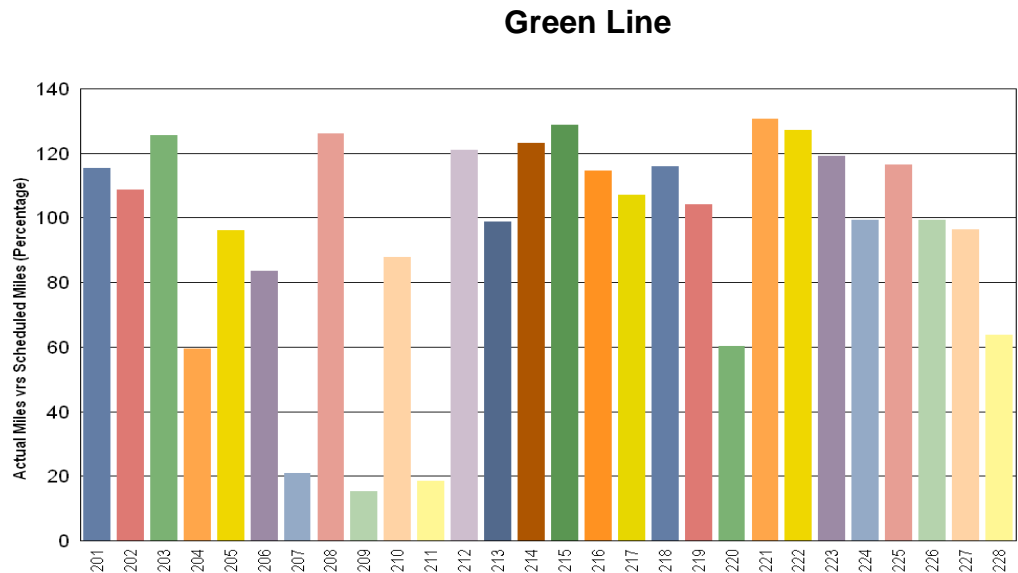
## December 1, 2008 to December 31, 2008



**Blue Line - Car 112 was involved in mainline entanglement & Car 113 has been in the Body Shop for Roof Repair.**

**Green Line - Car 207 has numerous EMI faults, Car 209 needed "A" truck to be built & Car 211 has door overhaul project.**

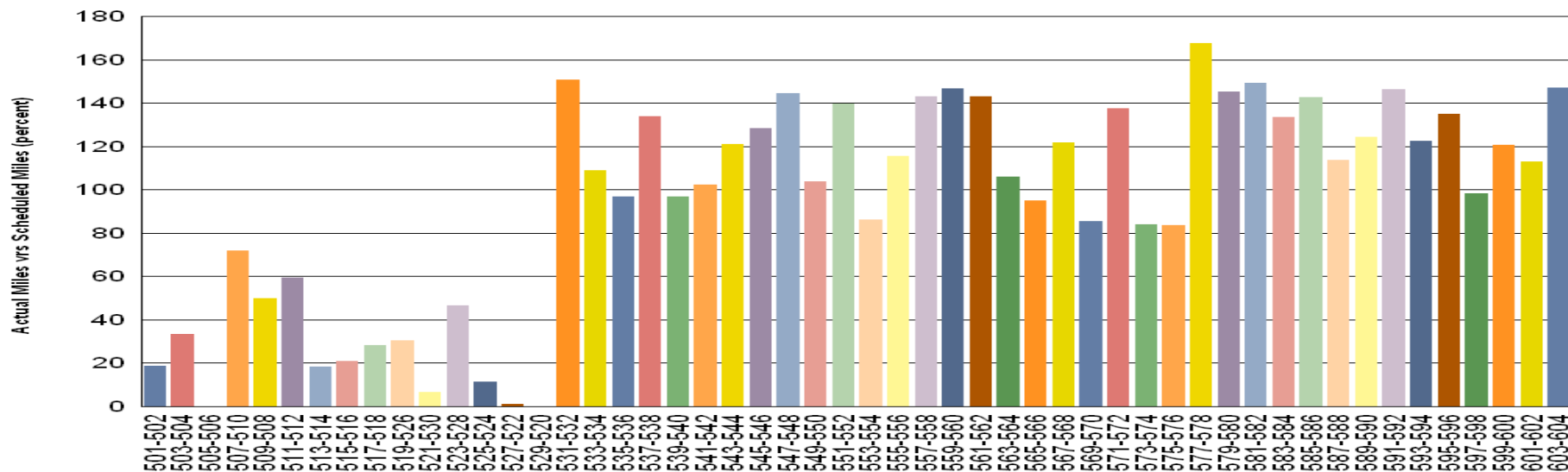
**Percentage includes an average 4% mileage deduction for Yard mileage and Vehicle Testing.**



# VEHICLE UTILIZATION

## December 1, 2008 to December 31, 2008

Red Line

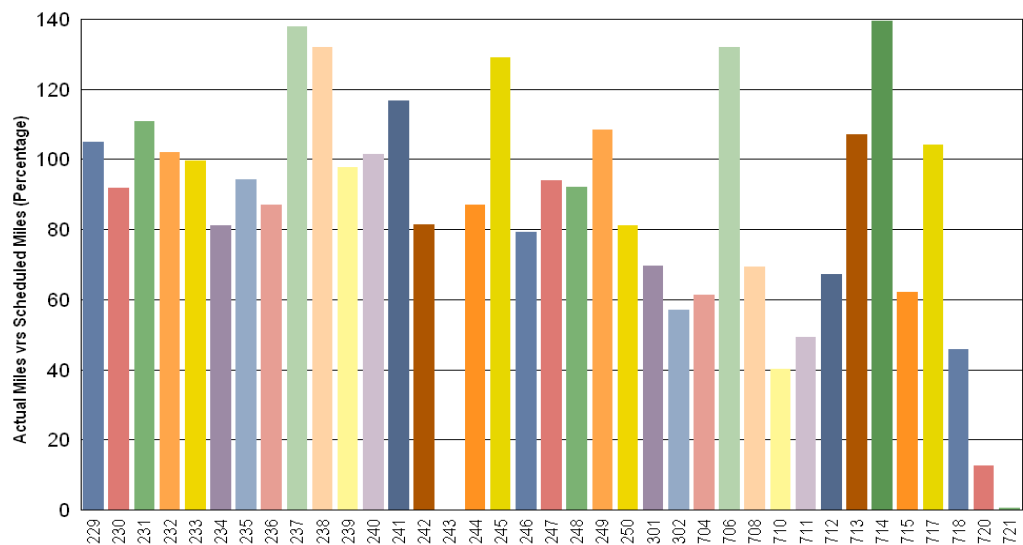


**Red Line - The original 30 Base Buy cars are not being used to their fullest potential so the remaining Option Buy cars are forced to pick up the slack.**

**Gold Line - Car 243 is in Sacramento having its fire damage repaired and AnsaldoBreda cars # 720 to 721 were just accepted recently.**

**Percentage includes an average 4% mileage deduction for Yard mileage and Vehicle Testing**

Gold Line



# Mean Miles Between Failures (Major) December 2008

## Miles Between Major Failures

**Blue Line:** 34,380 miles (12 Major Failures)

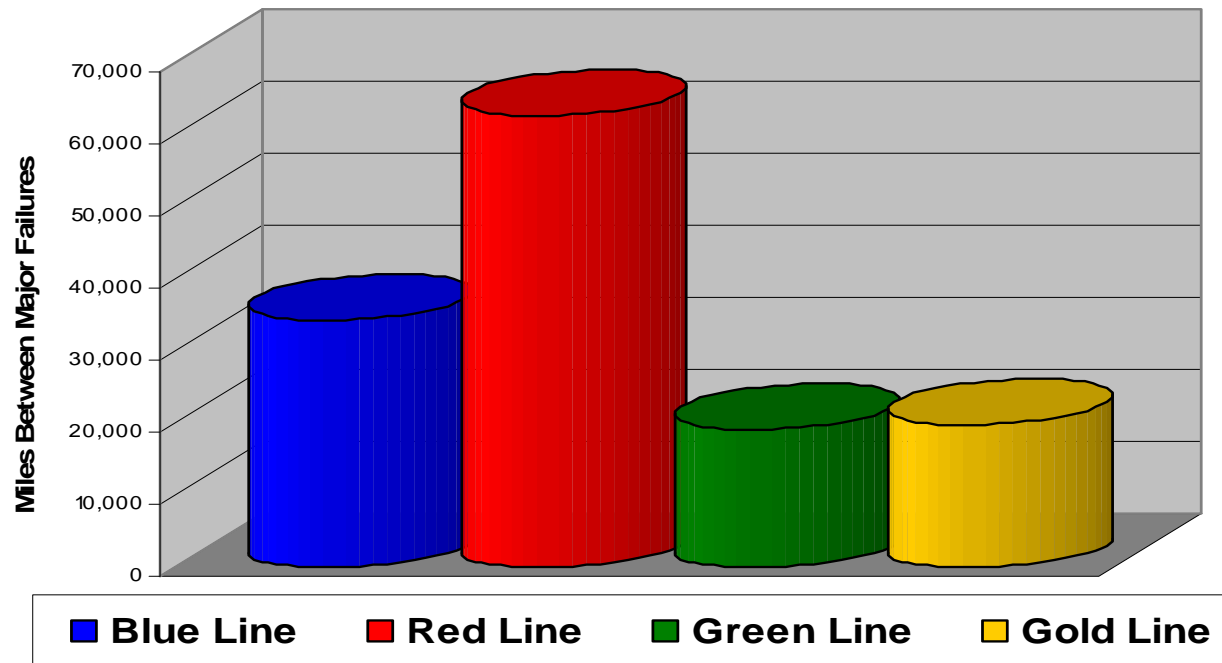
**Red Line:** 62,600 miles (9 Major Failures)

**Green Line:** 19,286 miles (12 Major Failures)

**Gold Line:** 19,801 miles (8 Major Failures)

Siemens P2000 21,974 miles (5 Major Failures)

AnsaldoBreda P2550 16,179 miles (3 Major Failures)



**Major Failure:** When a train does not complete its scheduled run or is more than 5 minutes late of its scheduled arrival time.



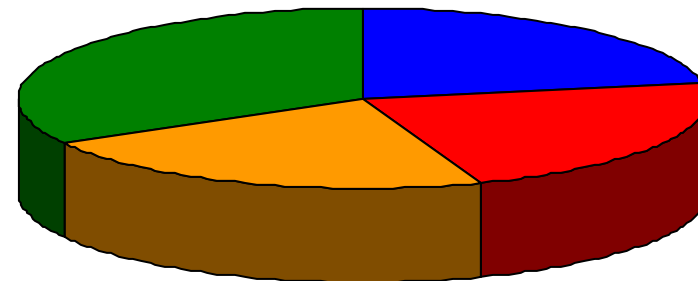
# Repeat Failures (Major) December 2008

Blue Line: 4 Repeat Failures

Red Line: 4 Repeat Failures

Green Line: 4 Repeat Failures

Gold Line: 6 Repeat Failures



■ Blue Line ■ Red Line ■ Green Line ■ Gold Line

Repeater Car Details - December 2008

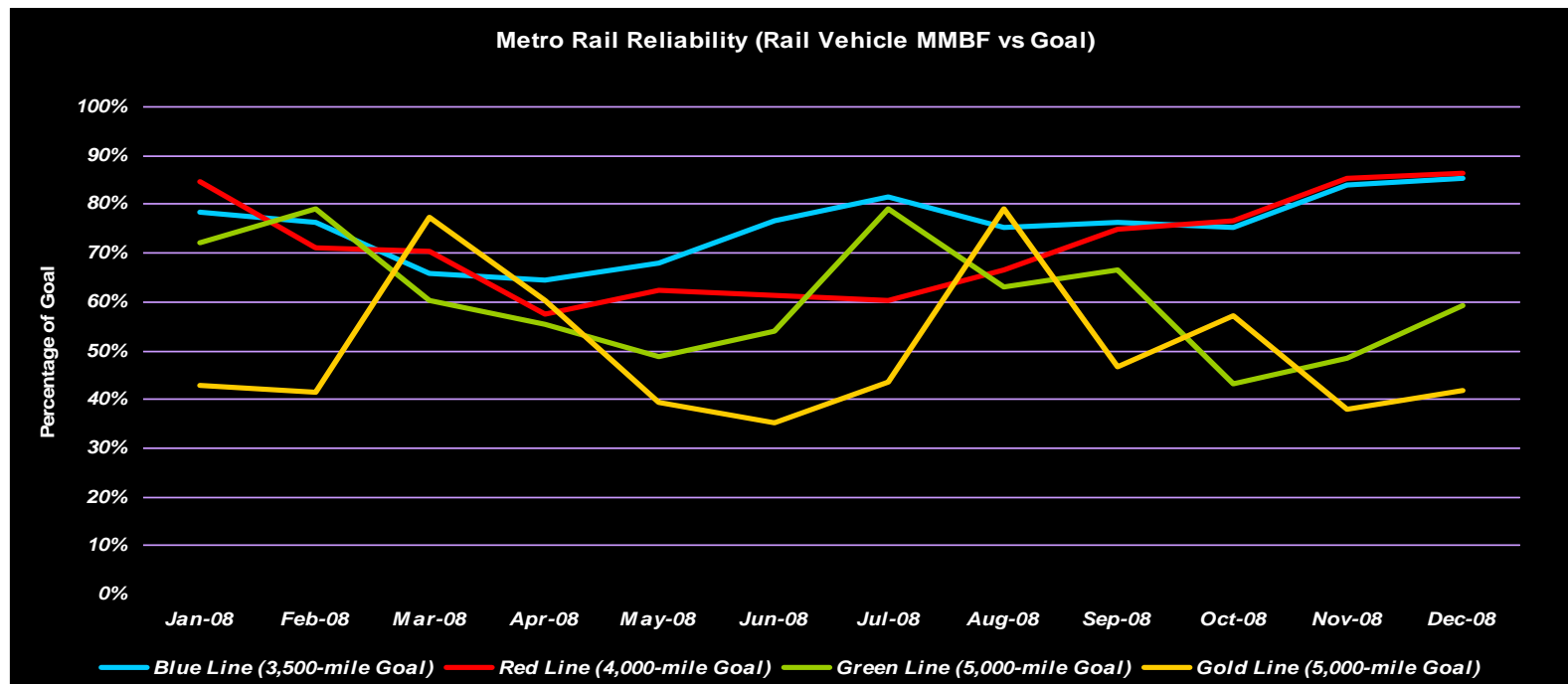
System	Blue Line		Red Line		Green Line		Gold Line	
	Car #	No. of Repeats	Car #	No. of Repeats	Car #	No. of Repeats	Car #	No. of Repeats
ATP					207	2		
Propulsion/Dynamic Brake			519 538	2 2	213	2	247 301	3 3
Radio (Rail Comm)	102 138	2 2						
TOTALS	4		4		4		6	

*Repeat Failure: When a train car has two or more major repeat problems/failures.*

# Metro Rail Reliability

## December 2008

	Jan-08	Feb-08	Mar-08	Apr-08	May-08	Jun-08	Jul-08	Aug-08	Sep-08	Oct-08	Nov-08	Dec-08
Blue Line Rail Vehicle Incidents	147	143	176	178	173	149	148	156	151	161	131	138
Blue Line Monthly Mileage	402,556	382,656	406,275	401,881	410,888	400,058	421,632	411,301	403,361	424,466	385,704	412,565
Blue Line MMBF	2,738	2,676	2,308	2,258	2,375	2,685	2,849	2,637	2,671	2,636	2,944	2,990
Blue Line (3,500-mile Goal)	78%	76%	66%	65%	68%	77%	81%	75%	76%	75%	84%	85%
Red Line Rail Vehicle Incidents	158	175	192	228	212	209	221	199	182	186	159	163
Red Line Monthly Mileage	535,220	496,907	539,274	524,452	528,698	513,141	532,394	529,268	544,302	569,212	542,756	563,404
Red/Purple Line MMBF	3,387	2,839	2,809	2,300	2,494	2,455	2,409	2,660	2,991	3,060	3,414	3,456
Red Line (4,000-mile Goal)	85%	71%	70%	58%	62%	61%	60%	66%	75%	77%	85%	86%
Green Line Rail Vehicle Incidents	62	53	73	79	90	78	55	68	68	110	90	78
Green Line Monthly Mileage	223,068	209,648	219,499	218,303	219,499	211,045	217,035	214,560	226,339	237,068	217,632	231,429
Green Line MMBF	3,598	3,956	3,007	2,763	2,439	2,706	3,946	3,155	3,329	2,155	2,418	2,967
Green Line (5,000-mile Goal)	72%	79%	60%	55%	49%	54%	79%	63%	67%	43%	48%	59%
Gold Line Rail Vehicle Incidents	73	69	39	49	76	83	70	38	63	54	82	76
Gold Line Monthly Mileage	155,907	143,185	151,044	147,591	149,693	146,598	152,075	150,466	147,380	154,222	155,276	158,405
Gold Line MMBF	2,136	2,075	3,873	3,012	1,970	1,766	2,173	3,960	2,339	2,856	1,894	2,084
Gold Line (5,000-mile Goal)	43%	42%	77%	60%	39%	35%	43%	79%	47%	57%	38%	42%



**Metro**

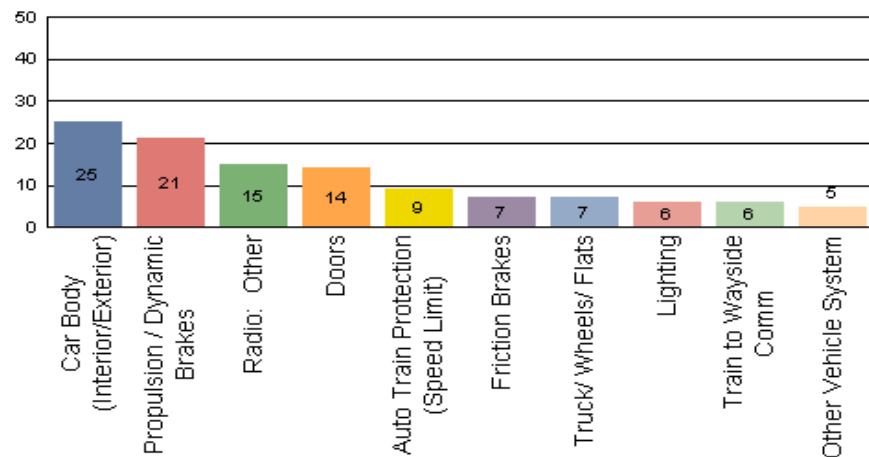
Blue & Red/Purple Lines Goal are lower due to age of vehicles

# Incident Problems

## December 2008

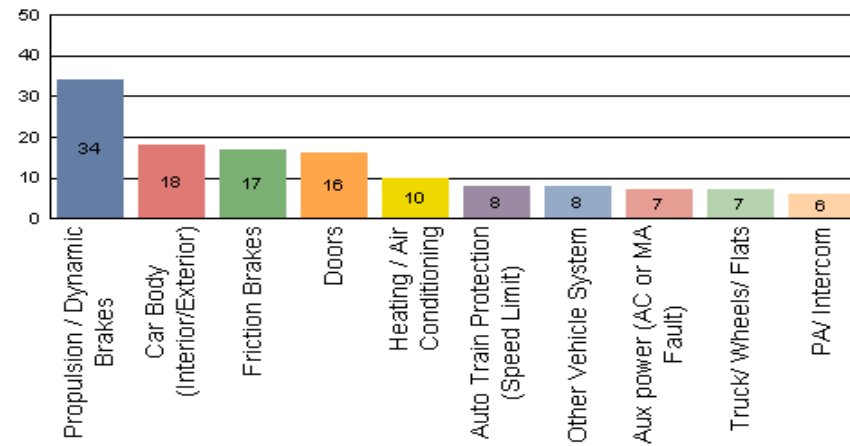
### Blue Line

Count of the Top 10 Incident Problems



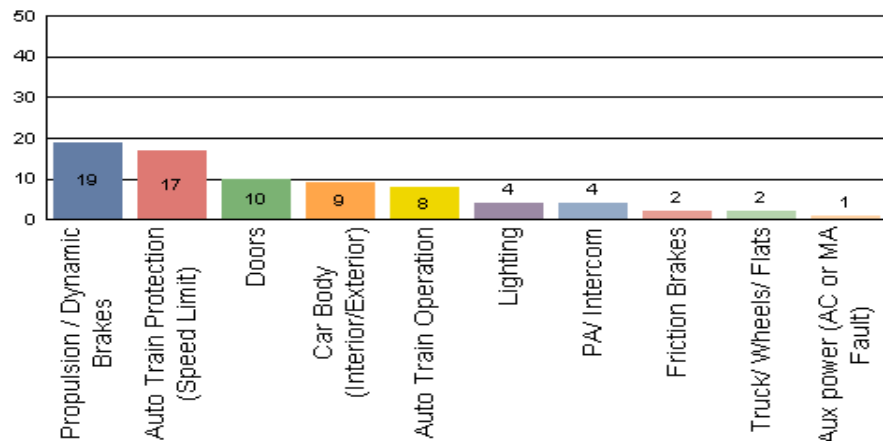
### Red Line

Count of the Top 10 Incident Problems



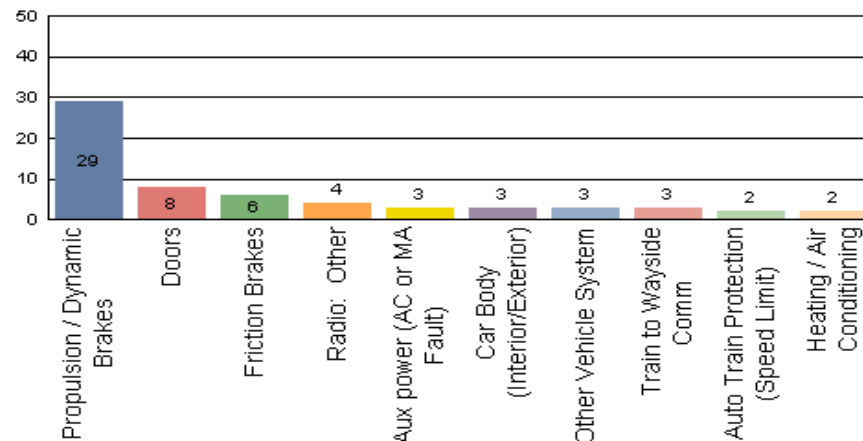
### Green Line

Count of the Top 10 Incident Problems



### Gold Line

Count of the Top 10 Incident Problems



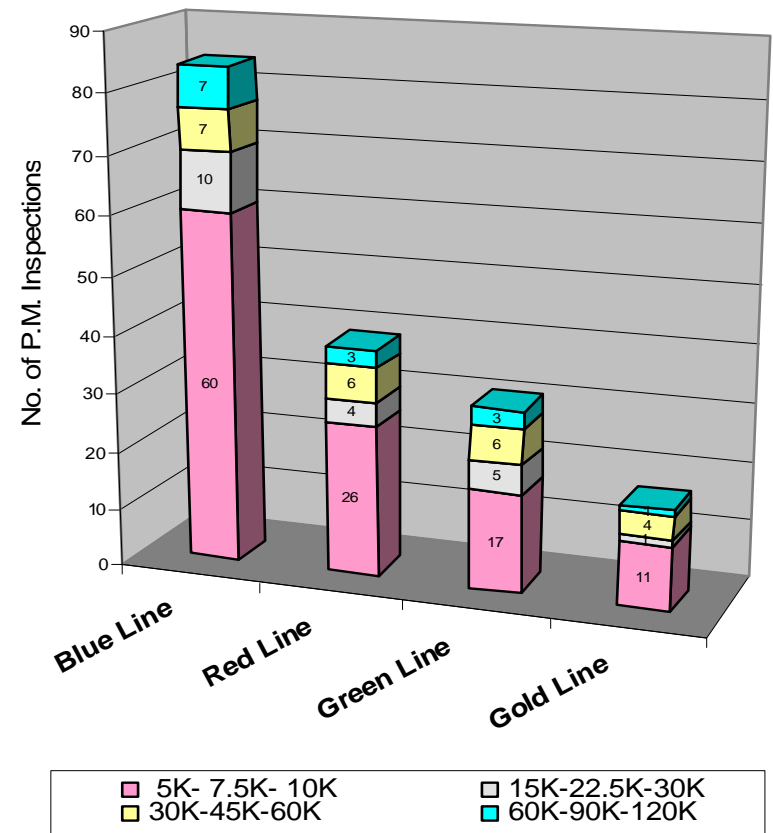
# Preventative Maintenance Compliance

## December 2008

Averages	Jan-08	Feb-08	Mar-08	Apr-08	May-08	Jun-08	Jul-08	Aug-08	Sep-08	Oct-08	Nov-08	Dec-08
<b>Blue Line</b>	<b>100%</b>	<b>100%</b>	<b>100%</b>	<b>100%</b>	<b>100%</b>	<b>97%</b>	<b>100%</b>	<b>100%</b>	<b>96%</b>	<b>100%</b>	<b>100%</b>	<b>100%</b>
<b>Red Line</b>	<b>100%</b>	<b>100%</b>	<b>100%</b>	<b>100%</b>	<b>100%</b>	<b>80%</b>	<b>100%</b>	<b>100%</b>	<b>100%</b>	<b>100%</b>	<b>100%</b>	<b>100%</b>
<b>Green Line</b>	<b>95%</b>	<b>100%</b>	<b>100%</b>	<b>100%</b>	<b>100%</b>	<b>100%</b>	<b>100%</b>	<b>100%</b>	<b>100%</b>	<b>100%</b>	<b>100%</b>	<b>100%</b>
<b>Gold Line</b>	<b>100%</b>	<b>100%</b>	<b>100%</b>	<b>100%</b>	<b>100%</b>	<b>100%</b>	<b>100%</b>	<b>100%</b>	<b>100%</b>	<b>100%</b>	<b>100%</b>	<b>100%</b>

### December 2008 Preventative Maintenance Inspections

No. of P.M. Inspections	5K-7.5K-10K	15K-22.5K-30K	30K-45K-60K	60K-90K-120K	Totals	Percent Compliance
<b>Blue Line</b>	60	10	7	7	84	100%
<b>Red Line</b>	26	4	6	3	39	100%
<b>Green Line</b>	17	5	6	3	31	100%
<b>Gold Line</b>	11	1	4	1	17	100%
<b>Totals:</b>	114	20	23	14	171	100%

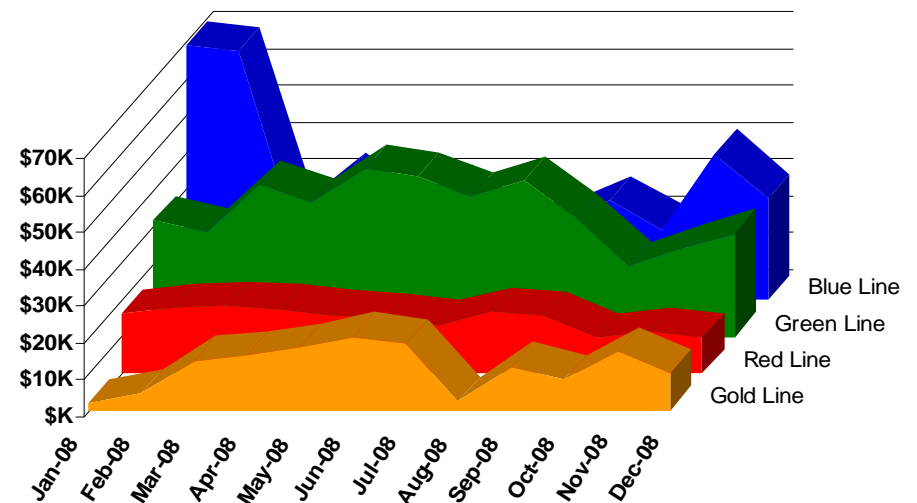


# Vandalism & Graffiti Report

## December 2008

	Jan-08	Feb-08	Mar-08	Apr-08	May-08	Jun-08	Jul-08	Aug-08	Sep-08	Oct-08	Nov-08	Dec-08	Year-to-Date
Blue Line	\$69K	\$68K	\$22K	\$34K	\$22K	\$30K	\$19K	\$21K	\$27K	\$19K	\$40K	\$28K	\$523K
Red Line	\$16K	\$18K	\$18K	\$17K	\$16K	\$15K	\$13K	\$17K	\$16K	\$10K	\$11K	\$10K	\$177K
Green Line	\$32K	\$29K	\$41K	\$37K	\$46K	\$43K	\$38K	\$42K	\$32K	\$19K	\$24K	\$28K	\$411K
Gold Line	\$2K	\$5K	\$14K	\$15K	\$17K	\$20K	\$18K	\$2K	\$12K	\$8K	\$16K	\$10K	\$139K
Totals:	\$119K	\$119K	\$95K	\$103K	\$101K	\$109K	\$88K	\$83K	\$87K	\$56K	\$91K	\$76K	\$1,052K

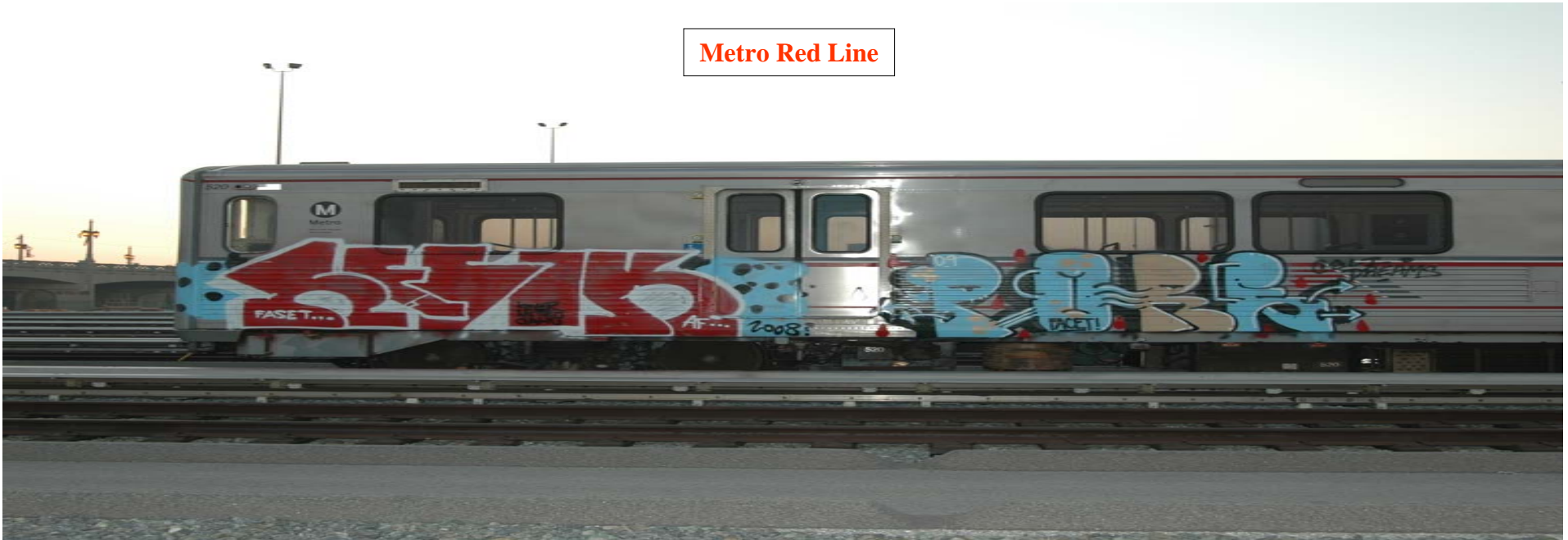
December 2008 Vandalism & Graffiti - All Rail				
	Qty	Labor	Materials	Totals
Windows replaced	87	\$6,143	\$9,849	\$ 15,991
Vandal Shields	383	\$8,863	\$6,594	\$ 15,456
Vandal Shields - Other	6	\$567	\$409	\$ 976
Seats Cleaned	10,089	\$23,665	\$0	\$ 23,665
Seats Replaced	77	\$2,332	\$3,127	\$ 5,459
Ext/Int Repairs	1,119	\$10,682	\$2,520	\$ 13,202
Exterior Graffiti Clean	1	\$1,008	\$149	\$1,157
Totals for December 2008		\$53,258	\$22,647	\$ 75,906



# Vandalism & Graffiti Pictures

## December 2008

Metro Red Line



Metro Green Line



Metro Blue Line  
(As reported by a passenger)



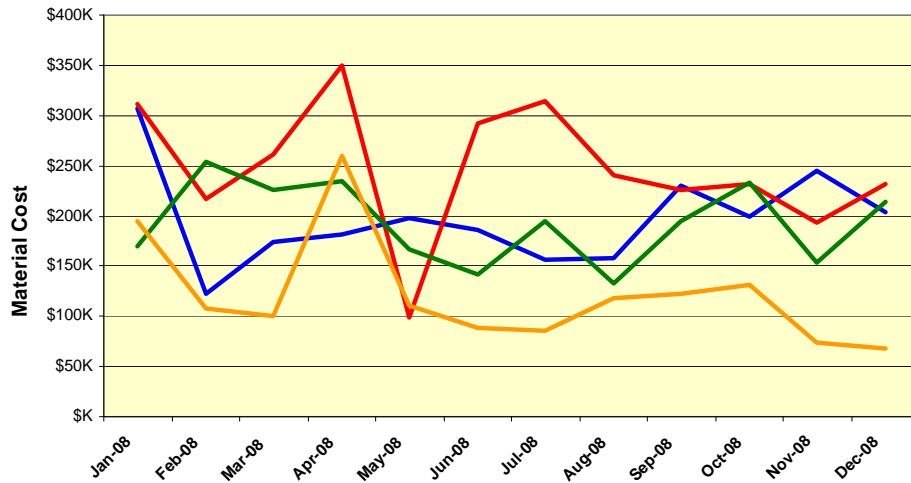
Metro

# Material and Labor Costs

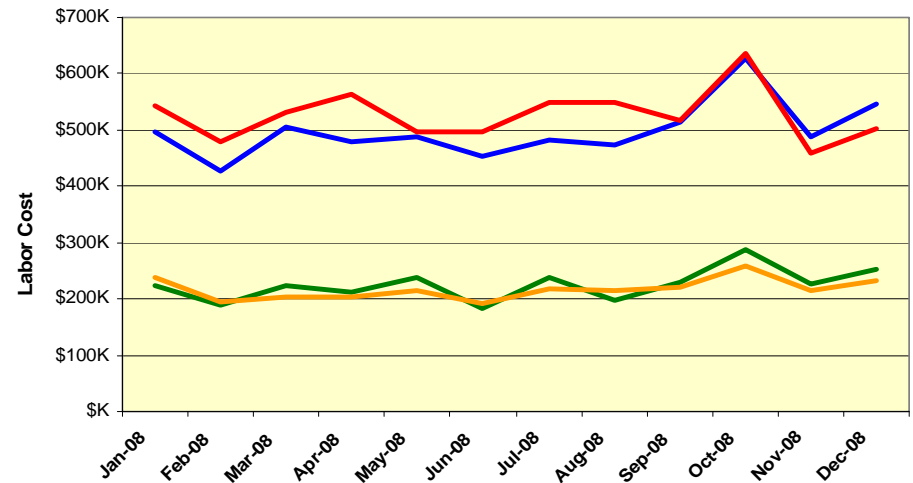
## December 2008

MATERIALS	Jan-08	Feb-08	Mar-08	Apr-08	May-08	Jun-08	Jul-08	Aug-08	Sep-08	Oct-08	Nov-08	Dec-08	Totals
Blue Line	\$307K	\$123K	\$174K	\$181K	\$197K	\$185K	\$156K	\$157K	\$230K	\$199K	\$244K	\$204K	\$2358K
Red Line	\$311K	\$217K	\$261K	\$349K	\$99K	\$292K	\$314K	\$240K	\$225K	\$232K	\$193K	\$232K	\$2965K
Green Line	\$169K	\$254K	\$225K	\$235K	\$166K	\$142K	\$194K	\$133K	\$195K	\$233K	\$153K	\$214K	\$2314K
Gold Line	\$195K	\$107K	\$101K	\$260K	\$110K	\$88K	\$85K	\$118K	\$123K	\$132K	\$74K	\$68K	\$1460K
Totals	\$981K	\$701K	\$761K	\$1,025K	\$572K	\$707K	\$750K	\$649K	\$774K	\$795K	\$665K	\$717K	\$9,098K

**Material Costs**



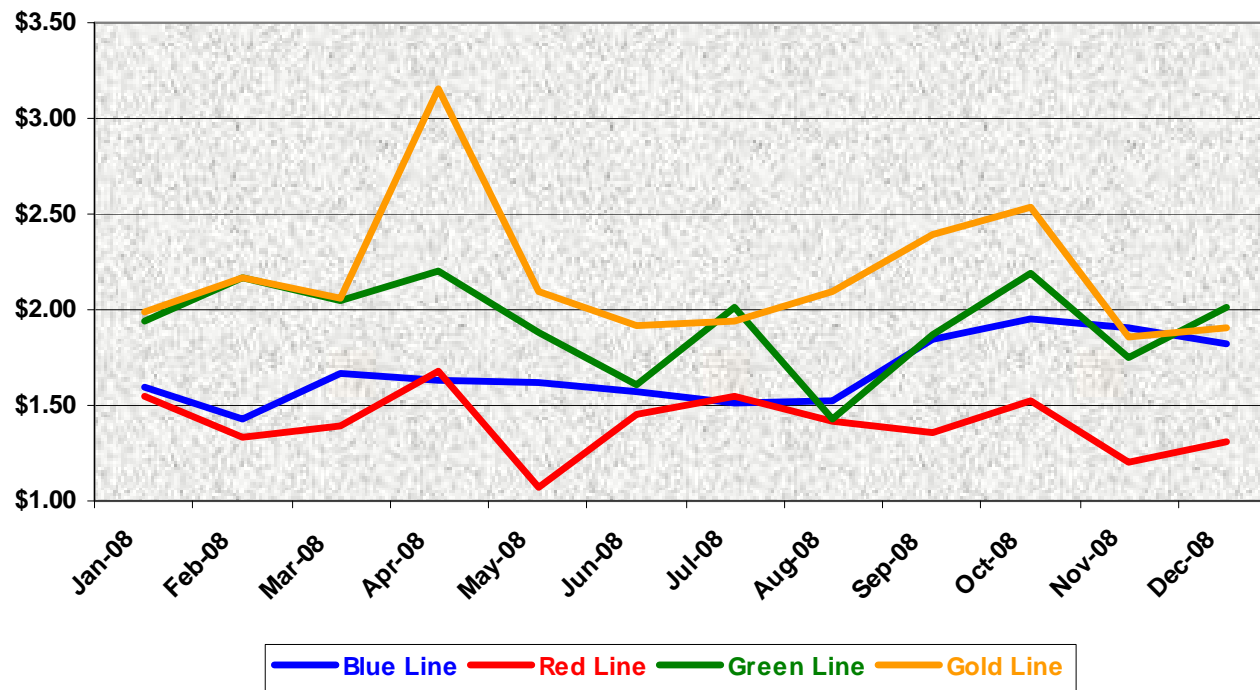
**Labor Costs**



LABOR	Jan-08	Feb-08	Mar-08	Apr-08	May-08	Jun-08	Jul-08	Aug-08	Sep-08	Oct-08	Nov-08	Dec-08
Blue Line	\$498K	\$426K	\$505K	\$479K	\$487K	\$454K	\$483K	\$473K	\$513K	\$628K	\$489K	\$547K
Red Line	\$542K	\$481K	\$530K	\$563K	\$498K	\$496K	\$549K	\$548K	\$516K	\$637K	\$460K	\$503K
Green Line	\$223K	\$190K	\$225K	\$211K	\$239K	\$184K	\$237K	\$196K	\$229K	\$287K	\$227K	\$252K
Gold Line	\$240K	\$196K	\$202K	\$202K	\$216K	\$192K	\$217K	\$214K	\$220K	\$260K	\$214K	\$233K
Totals	\$1,503K	\$1,293K	\$1,462K	\$1,454K	\$1,440K	\$1,326K	\$1,486K	\$1,431K	\$1,479K	\$1,812K	\$1,390K	\$1,535K

# Cost Per Mile December 2008

Cost per mile:	Jan-08	Feb-08	Mar-08	Apr-08	May-08	Jun-08	Jul-08	Aug-08	Sep-08	Oct-08	Nov-08	Dec-08	Average
Blue Line	\$1.60	\$1.43	\$1.67	\$1.63	\$1.62	\$1.58	\$1.51	\$1.52	\$1.84	\$1.95	\$1.90	\$1.82	\$1.66
Red Line	\$1.54	\$1.33	\$1.39	\$1.68	\$1.07	\$1.45	\$1.55	\$1.42	\$1.36	\$1.53	\$1.20	\$1.31	\$1.46
Green Line	\$1.94	\$2.17	\$2.05	\$2.20	\$1.89	\$1.61	\$2.01	\$1.43	\$1.87	\$2.19	\$1.75	\$2.01	\$1.94
Gold Line	\$1.99	\$2.16	\$2.05	\$3.16	\$2.10	\$1.91	\$1.94	\$2.10	\$2.40	\$2.54	\$1.86	\$1.90	\$2.25



No facility costs are included



# Rail Fleet Services Instruction

## December 2008

### Training classes completed during the month of December 2008

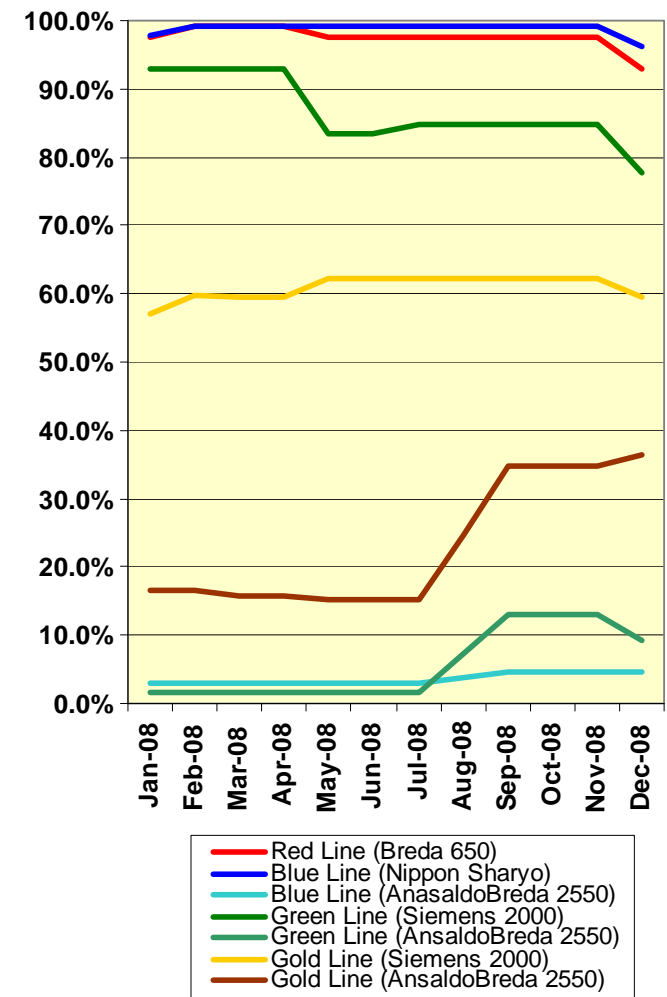
Description	Status	Start	End	Course Hours	Student Count	Training Hours
<b>Blue Line Training (Nippon Sharyo P865/P2020 LRV):</b>						
Back Safety (Video)	Complete	12/9/2008	12/9/2008	2	6	12
MOP SEXUAL HARASSMENT PREVENTION AND TITLE VII	Complete	12/5/2008	12/5/2008	2	3	6
FORKLIFT CERTIFICATION	Complete	12/29/2008	12/29/2008	2	4	8
Fire Safety (Video)	Complete	12/13/2008	12/13/2008	2	1	2
Confined Space Entry (Video)	Complete	12/18/2008	12/18/2008	2	2	4
FALL PROTECTION	Complete	12/3/2008	12/3/2008	2	9	18
ETD DEVELOPING YOUR FULL POTENTIAL	Complete	12/4/2008	12/4/2008	3	1	3
Electrical Safety (Video)	Complete	12/23/2008	12/23/2008	2	1	2
BLOODBORNE PATHOGENS	Complete	12/2/2008	12/2/2008	2	2	4
FORKLIFT CERTIFICATION	Complete	12/13/2008	12/13/2008	2	1	2
<b>Total Blue Line Training (Hours):</b>						<b>61</b>
<b>Red Line Training (Breda A650 HRV):</b>						
RFS SIMMONS WHEEL TRUE	Complete	12/8/2008	12/19/2008	32	8	256
FIRST TIME SUPERVISION	Complete	12/10/2008	12/10/2008	10	1	10
WORD 2003 - INTERMEDIATE	Complete	12/3/2008	12/3/2008	3.5	1	3.5
DIRECT DEPOSIT SELF SERVICE TRAINING	Complete	12/12/2008	12/12/2008	0.75	1	0.75
RFS 2-WEEK RAIL INTRODUCTION	Complete	12/1/2008	12/12/2008	74	1	74
DRUG AND ALCOHOL (SAFETY SENSITIVE)	Complete	12/5/2008	12/5/2008	2	1	2
RFS CAR HOIST OPERATION	Complete	12/4/2008	12/4/2008	2	1	2
RFS INDOOR CRANES	Complete	12/4/2008	12/4/2008	2	1	2
<b>Total Red Line Training (Hours):</b>						<b>350.25</b>
<b>Green Line Training (Siemens P2000 LRVs):</b>						
RFS 2-WEEK RAIL INTRODUCTION	Complete	12/1/2008	12/12/2008	70	2	140
FORKLIFT TRAINING	Complete	12/10/2008	12/10/2008	2	1	2
DRUG AND ALCOHOL (SAFETY SENSITIVE)	Complete	12/5/2008	12/5/2008	2	2	4
RFS CAR HOIST OPERATION	Complete	12/4/2008	12/4/2008	2	2	4
RFS INDOOR CRANES	Complete	12/4/2008	12/4/2008	2	2	4
LOCKOUT-TAGOUT - CONTROL OF HAZARDOUS ENERGY	Complete	12/3/2008	12/3/2008	2	2	4
NEO - NEW EMPLOYEE ORIENTATION	Complete	12/1/2008	12/1/2008	4	1	4
<b>Total Green Line Training (Hours):</b>						<b>162</b>
<b>Gold Line Training (P2550 &amp; P2000 LRVs):</b>						
DIRECT DEPOSIT SELF SERVICE TRAINING	Complete	12/19/2008	12/19/2008	0.75	1	0.75
ETD WRITING WHEN ENGLISH IS A SECOND LANGUAGE	Complete	12/18/2008	12/18/2008	3	1	3
MOP SEXUAL HARASSMENT PREVENTION AND TITLE VII	Complete	12/3/2008	12/3/2008	2	3	6
ETD COMMUNICATING ONE-ON-ONE	Complete	12/3/2008	12/3/2008	3	2	6
<b>Total Gold Line Training (Hours):</b>						<b>15</b>

**Total Rail Fleet Services Instruction for the month of December 2008 (Hours): 588.3**

#### Core Vehicle Training Completed:

	BLUE	RED	GREEN	GOLD
Percentage of core vehicle training complete:	96.2%	93.0%	77.8%	59.6%
AnsaldoBreda 2550 Training Completed:	4.6%	N/A	9.3%	36.3%
Average Specialist Rail Experience Level in Years:	9.8	7.9	7.2	7.4

### Core Training Completed



Variations caused by new hires, employee transfers, & training completed

# Absences vs. Overtime

## December 2008

ABSENCE TYPE and HOURS	3940	3941	3942	3943	3944	Total
BER-BEREAVEMENT	0.00	24.00	0.00	24.00	0.00	48.00
CTO-COMPENSATORY TIME OFF	0.00	194.50	170.00	68.00	37.00	469.50
CVA - CASUAL VACATION	48.00	32.00	980.00	80.00	2.00	1,142.00
DSL-DISABILITY LEAVE/LONG	0.00	352.00	560.00	184.00	352.00	1,448.00
EFH-EMG. FLOAT HOL.	8.00	8.00	32.00	0.00	8.00	56.00
ETO-EXCUSED TIME OFF	2.00	16.33	1.50	4.00	0.00	23.83
FML-FAMILY CARE LEAVE	0.00	498.29	336.00	94.83	64.00	993.12
HLF-HOLIDAY FLOATING	24.00	208.00	216.00	88.00	128.00	664.00
HNP-HOLIDAY NOT PAID	0.00	8.00	8.00	0.00	8.00	24.00
HOL-HOLIDAY LEGAL	56.00	528.00	496.00	200.00	160.00	1,440.00
II-INDUSTRIAL INJURY	0.00	136.00	0.00	0.00	80.00	216.00
JUR-JURY DUTY	0.00	8.00	32.00	0.00	40.00	80.00
LC1-LABOR CODE 233	40.00	144.00	232.63	96.00	48.00	560.63
LTI-OCCPIL/LONGTRM INJ LEAV	0.00	376.00	360.00	0.00	0.00	736.00
OWP-OFF WITH PERMISSION	0.00	0.78	0.00	2.50	0.00	3.28
RTO-REQUESTED TIME OFF-NO	0.00	0.00	2.50	8.00	0.00	10.50
SCK-SICK PAY	24.00	240.00	251.02	4.55	80.00	599.57
SCW-SICK WITHOUT PAY	0.00	8.00	16.00	16.00	16.00	56.00
SUP-TEMPORARY SUPERVISOR	0.00	349.15	250.95	272.00	0.00	872.10
VAC-VACATION	104.00	710.85	472.00	184.00	248.00	1,718.85
<b>Total</b>	<b>306.00</b>	<b>3,841.90</b>	<b>4,416.60</b>	<b>1,325.88</b>	<b>1,271.00</b>	<b>11,161.38</b>

OVERTIME TYPE and HOURS	3940	3941	3942	3943	3944	Total
CTB-COMPENSATORY TIME TO B	1.00	173.11	131.98	36.00	47.96	390.05
OTP-PREM OVERTIME	84.50	687.30	878.12	493.69	274.55	2,418.16
WLO-Worked Lunch Overtime	0.00	9.00	69.00	8.50	6.50	93.00
<b>Total</b>	<b>85.50</b>	<b>869.41</b>	<b>1,079.10</b>	<b>538.19</b>	<b>329.01</b>	<b>2,901.21</b>

UNCOVERED ABSENCES	3940	3941	3942	3943	3944	Total
Absences FTE	1.77	22.17	25.48	7.65	7.33	64.39
OTP FTE	0.49	5.02	6.23	3.11	1.90	16.74
<b>FTE Difference</b>	<b>1.27</b>	<b>17.15</b>	<b>19.26</b>	<b>4.54</b>	<b>5.43</b>	<b>47.66</b>

1 FTE = 2080 Hours/Year or 173.3 Hours Per Month