



# **Rail Fleet Services Monthly Report February, 2008**



**Metro**

# Table of Contents

• Safety	
– Industrial Injuries	Page 1
– Rail Vehicle Accidents & Major Incidents	Page 2
• Customer Service	
– Service Delivery – AM/PM Pull-Outs	Page 3
– Mean Miles Between Failures (Major)	Page 4
– Repeater Car Details	Page 5
• Business Processes	
– Incident Problems & Locations Blue & Red Lines	Page 6
– Incident Problems & Locations Green & Gold Lines	Page 7
– Preventative Maintenance Compliance	Page 8
• Finance	
– Vandalism & Graffiti Costs	Page 9
– Graffiti Vandalism	Page 10
– Graffiti Costs	Page 11
– Material & Labor Costs	Page 12
– Cost per mile	Page 13
– Capital Projects	Page 14
• Growth	
– Rail Fleet Service Training	Page 15

# Industrial Injuries – Lost Work Hours

	Mar-07	Apr-07	May-07	Jun-07	Jul-07	Aug-07	Sep-07	Oct-07	Nov-07	Dec-07	Jan-08	Feb-08	Year-to-Date
Blue Line	144	120	21	0	0	72	48	168	168	133	24	0	1,018
Red Line	224	336	304	200	264	272	168	184	96	0	0	208	2,200
Green Line	0	0	0	0	0	0	0	2	0	0	160	24	226
Gold Line	216	264	288	392	264	368	328	80	160	176	72	0	2,928
Totals	584	720	613	592	528	712	544	434	424	309	256	232	5,716

## February 2008 Lost Work Hours

## February 2008 Lost Work Hours

## Year-to-Date

Blue Line – 110 Assigned Employees (107 Active)

Red Line – 107 Assigned Employees (102 Active)

- Service Attendants – 208 hours

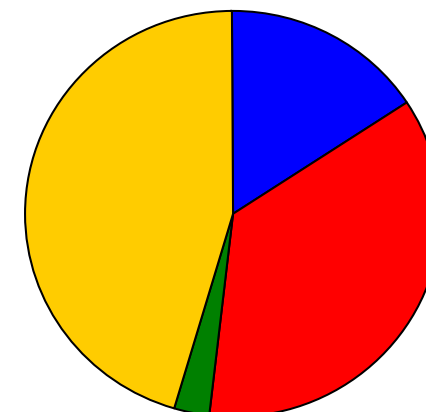
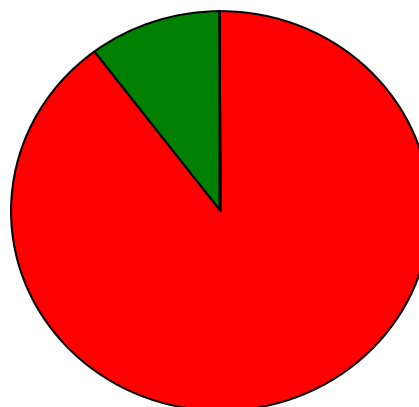
Green Line – 46 Assigned Employees (43 Active)

- Rail Body/Paint Repairer – 24 hours

Gold Line – 46 Assigned Employees (45 Active)

Total Lost Work Hours for February 2008 – 232 hours

Total Lost Work Hours for 12-Months - 5,716 Hours



■ Blue Line 
 ■ Red Line 
 ■ Green Line 
 ■ Gold Line

# Rail Vehicle Accidents & Major Incidents

	Mar-07	Apr-07	May-07	Jun-07	Jul-07	Aug-07	Sep-07	Oct-07	Nov-07	Dec-07	Jan-08	Feb-08
<b>Blue Line</b>	<b>\$1,485</b>	<b>\$6,869</b>	<b>\$57</b>	<b>\$9,551</b>	<b>\$4,652</b>	<b>\$46,144</b>	<b>\$7,532</b>	<b>\$0</b>	<b>\$4,661</b>	<b>\$4,489</b>	<b>\$8,500</b>	<b>\$497</b>
<b>Red Line</b>	<b>\$0</b>	<b>\$0</b>	<b>\$0</b>	<b>\$0</b>	<b>\$0</b>	<b>\$0</b>	<b>\$0</b>	<b>\$0</b>	<b>\$203</b>	<b>\$0</b>	<b>\$0</b>	<b>\$0</b>
<b>Green Line</b>	<b>\$0</b>	<b>\$0</b>	<b>\$0</b>	<b>\$0</b>	<b>\$0</b>	<b>\$0</b>	<b>\$0</b>	<b>\$0</b>	<b>\$6,036</b>	<b>\$0</b>	<b>\$0</b>	<b>\$289</b>
<b>Gold Line</b>	<b>\$0</b>	<b>\$0</b>	<b>\$0</b>	<b>\$0</b>	<b>\$0</b>	<b>\$0</b>	<b>\$33,925</b>	<b>\$34,189</b>	<b>\$0</b>	<b>\$326</b>	<b>\$340</b>	<b>\$18,388</b>
<b>Totals</b>	<b>\$1,485</b>	<b>\$6,869</b>	<b>\$57</b>	<b>\$9,551</b>	<b>\$4,652</b>	<b>\$46,144</b>	<b>\$41,457</b>	<b>\$34,189</b>	<b>\$10,900</b>	<b>\$4,815</b>	<b>\$8,840</b>	<b>\$19,174</b>

## February 2008 Rail Vehicle Accidents & Major Incidents

### Blue Line

- Feb. 2, Train vs. Ped at PedX across Wilmington grade crossing (\$497)
- Feb. 6 Train Vs. Ped at GradeX – at 55<sup>th</sup> Street (\$0)

### Green Line

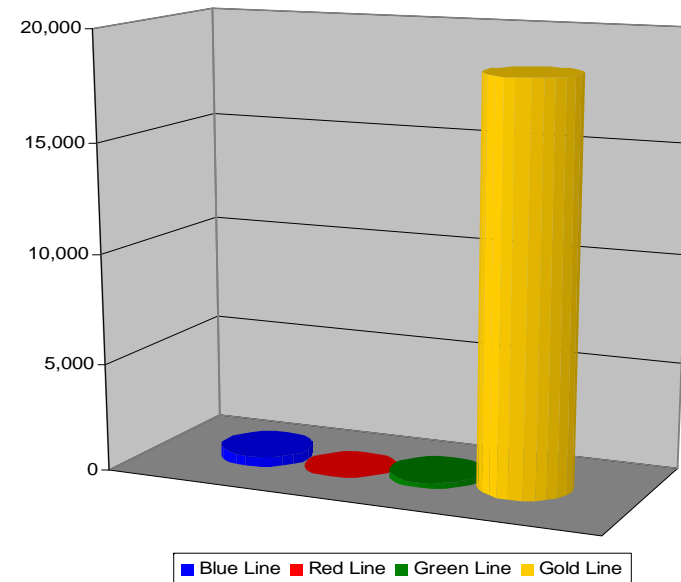
- February 20 Train vs. Other – T-081 Train 59, track 1 , just past Aviation signal 14 (\$289)

### Gold Line

- February 17 Train Vs. Auto Train 5, T-277, LRV's (248-B) 10-73 at Ave. 57 track 2. (\$18,332)
- February 20 Train Vs. Other- Passenger tripped/fell over damaged skirt at Marine platform 2. (\$56)

The monthly accident charges listed above represent only the expenses incurred in that particular month and are not a total repair of an individual accident.

February, 2008 Damage Cost



# Service Delivery – AM/PM Pull-Outs

## Cars Available for AM/PM Pull-Outs

	Mar-07	Apr-07	May-07	Jun-07	Jul-07	Aug-07	Sep-07	Oct-07	Nov-07	Dec-07	Jan-08	Feb-08
Blue Line	100%	100%	100%	100%	100%	100%	100%	100%	100%	99%	100%	100%
Red Line	100%	100%	100%	100%	100%	100%	100%	100%	100%	100%	100%	100%
Green Line	100%	100%	100%	100%	100%	100%	100%	100%	100%	100%	100%	100%
Gold Line	100%	100%	100%	100%	100%	100%	100%	100%	100%	100%	100%	100%

## AM/PM Pull-Out Requirements

### Blue Line – Fleet Size 69 cars

- Weekday pull-out: 60 cars
- Weekend pull-out: 36 cars
- **Monthly Mileage: 383,842 miles**

### Red Line - Fleet Size 104 cars

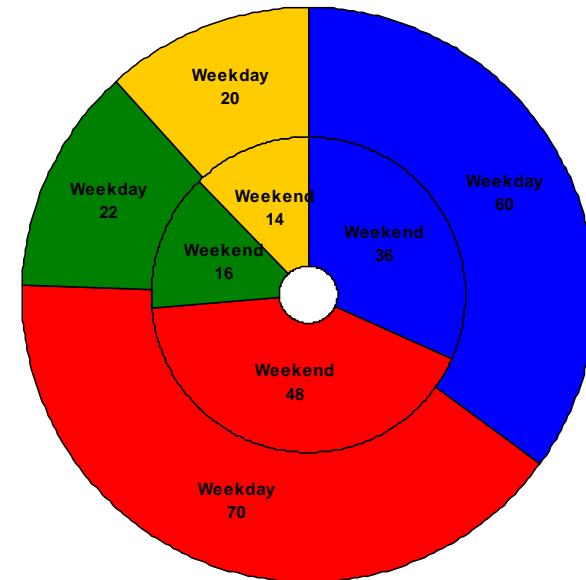
- Weekday pull-out: 70 cars
- Weekend pull-out: 48 cars
- **Monthly Mileage: 523,382 miles**

### Green Line – Fleet Size 28 cars

- Weekday pull-out: 22 cars
- Weekend pull-out: 16 cars
- **Monthly Mileage: 208,848 miles**

### Gold Line – Fleet Size 24 cars

- Weekday pull-out: 20 cars
- Weekend pull-out: 14 cars
- **Monthly Mileage: 140,083 miles**



■ Blue Line ■ Red Line ■ Green Line ■ Gold Line

# Mean Miles Between Failures (Major)

February 2008

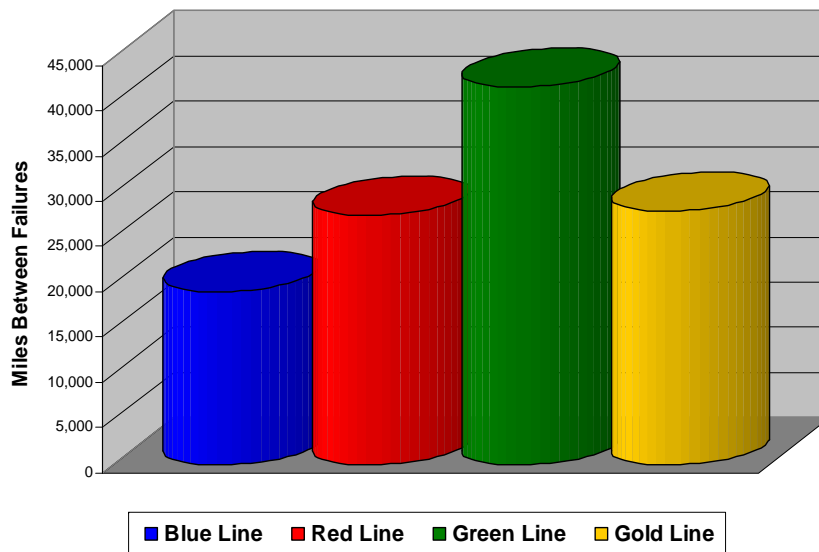
## FTA Major Failures

Blue Line: 19,192 miles (20 FTA Major Failures)

Red Line: 27,546 miles (19 FTA Major Failures)

Green Line: 41,770 miles (5 FTA Major Failures)

Gold Line: 28,017 miles (5 FTA Major Failures)



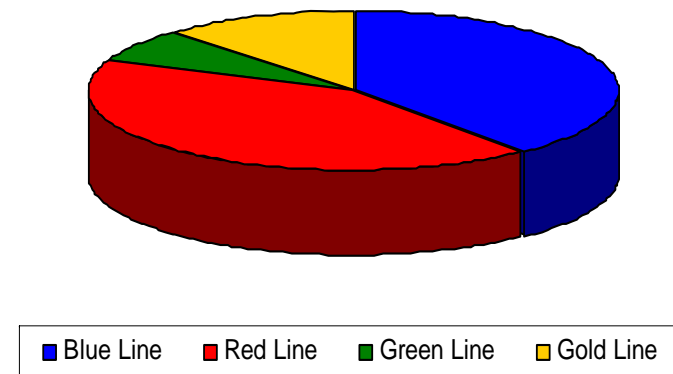
## Repeat Failures

Blue Line: 23 Repeat Failures

Red Line: 25 Repeat Failures

Green Line: 4 Repeat Failures

Gold Line: 7 Repeat Failures



# Repeater Car Details

February, 2008

System	Car #	No. of Repeats	Car #	No. of Repeats	Car #	No. of Repeats	Car #	No. of Repeats
Automatic Train Protection	105 111	2 1	529 539	1 1				
Doors	112 122 127 132 137 153	1 1 1 1 1 3	552	1	220	1		
Friction Brakes	135	5	523 528 539 544 574 597 598	1 1 1 1 2 3 2				
Horn/Gong	118	3						
Lighting	157	1						
Propulsion			516 527 574	3 1 2	205 209 219	1 1 1	232 234 247	2 3 1
HVAC			556	1				
PA Intercom	105	2	577	1	223	1	302	1
Radio			537	2				
Train-to-Wayside Communications	114	1						
Other Vehicle System			523	1				
TOTALS	13	23	17	25	5	5	4	7

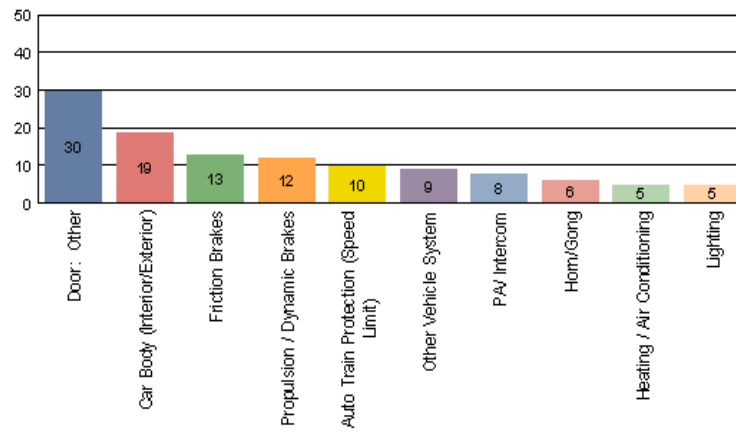


**Metro**

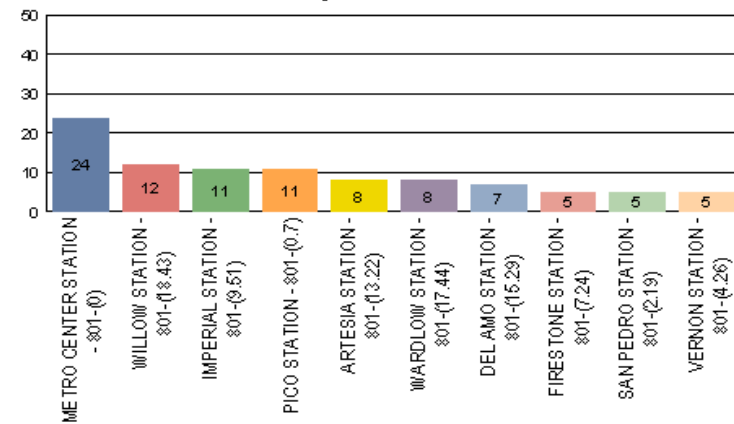
# Incident Problems & Locations – Blue & Red Lines

## Blue Line – February 2008

Count of the Top 10 Incident Problems

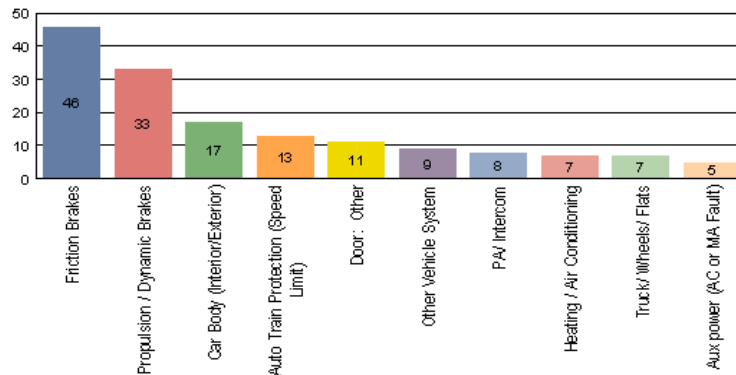


Count of the Top 10 Incident Locations

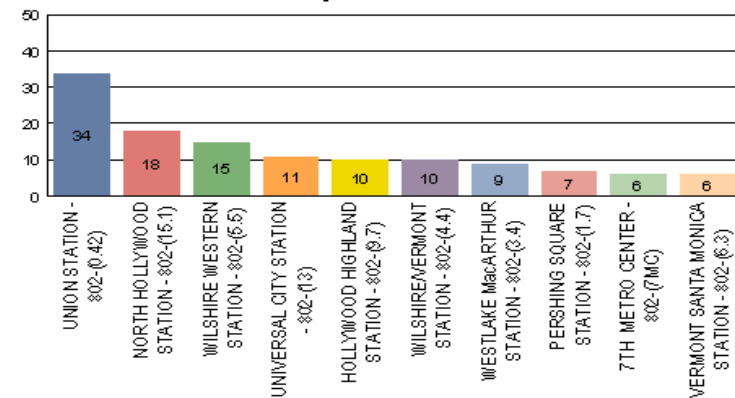


## Red Line – February 2008

Count of the Top 10 Incident Problems



Count of the Top 10 Incident Locations

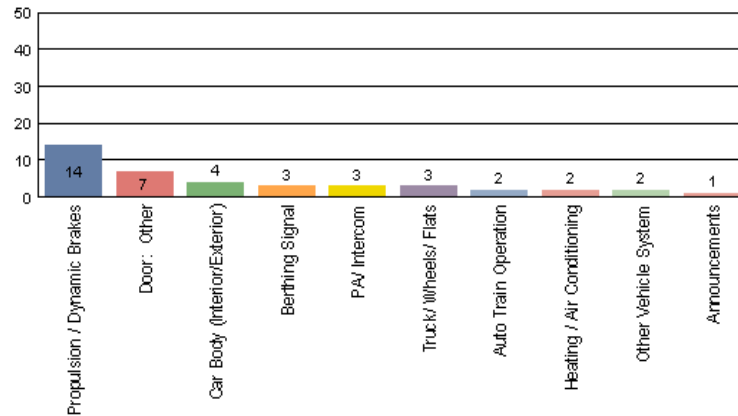




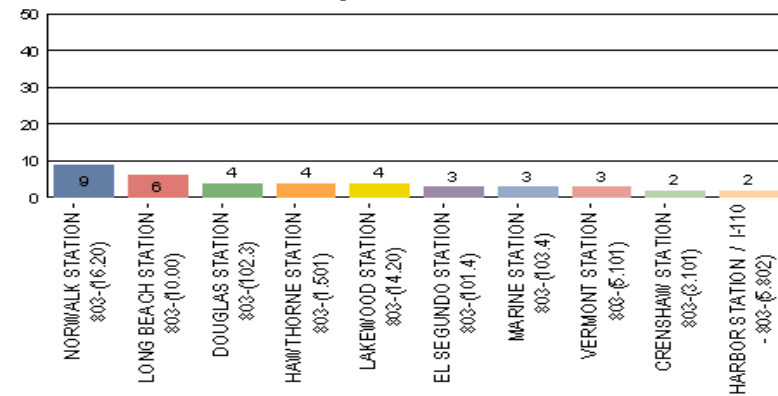
# Incident Problems & Locations – Green & Gold Lines

## Green Line - February 2008

Count of the Top 10 Incident Problems

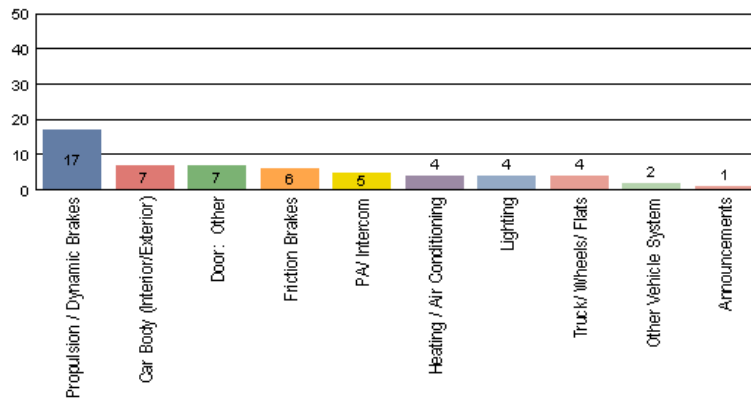


Count of the Top 10 Incident Locations

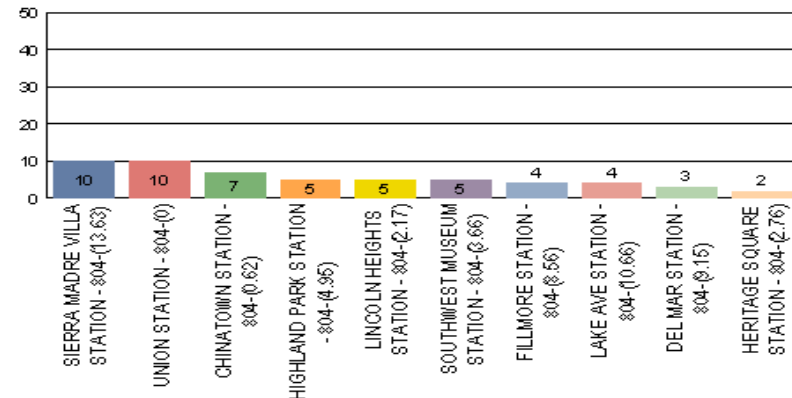


## Gold Line - February 2008

Count of the Top 10 Incident Problems



Count of the Top 10 Incident Locations



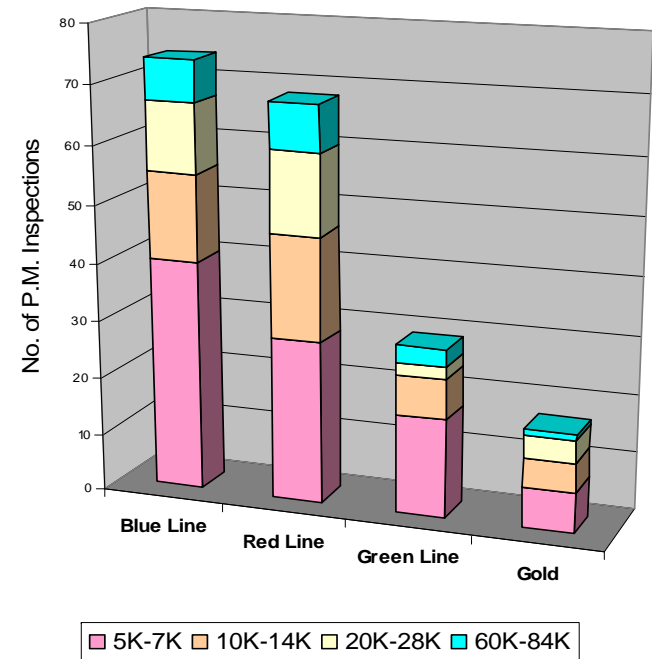
# Preventative Maintenance Compliance

	Mar-07	Apr-07	May-07	Jun-07	Jul-07	Aug-07	Sep-07	Oct-07	Nov-07	Dec-07	Jan-08	Feb-08
Blue Line	100%	100%	100%	100%	100%	100%	100%	100%	100%	100%	100%	100%
Red Line	100%	97%	100%	100%	100%	100%	100%	100%	100%	99%	100%	100%
Green Line	100%	100%	100%	100%	100%	100%	100%	100%	100%	100%	95%	100%
Gold Line	100%	100%	100%	100%	100%	100%	100%	100%	100%	100%	100%	100%

## February 2008 Preventative Maintenance Inspections

No. of P.M. Inspections	5K	10K	20K	60K	Totals
Blue Line	40	15	12	7	74

No. of P.M. Inspections	7K	14K	28K	84K	Totals
Red Line	28	18	14	8	68
Green Line	17	7	2	3	29
Gold Line	7	5	4	1	17



# Vandalism & Graffiti Report

	Mar-07	Apr-07	May-07	Jun-07	Jul-07	Aug-07	Sep-07	Oct-07	Nov-07	Dec-07	Jan-08	Feb-08	Year To Date
Blue Line	\$56,911	\$36,165	\$22,571	\$33,340	\$41,364	\$41,364	\$54,873	\$68,406	\$78,067	\$84,209	\$69,383	\$67,624	\$654K
Red Line	\$11,893	\$12,098	\$17,357	\$21,464	\$11,906	\$11,906	\$11,645	\$9,355	\$15,156	\$13,231	\$16,100	\$17,874	\$170K
Green Line	\$26,026	\$29,903	\$25,863	\$28,478	\$32,716	\$33,547	\$44,227	\$33,832	\$37,022	\$37,495	\$31,632	\$28,564	\$389K
Gold Line	\$3,522	\$4,094	\$9,778	\$4,347	\$4,840	\$5,992	\$4,980	\$4,980	\$6,416	\$11,638	\$2,030	\$4,715	\$64K
Totals	\$98,352	\$82,260	\$75,569	\$87,629	\$90,826	\$92,809	\$115,725	\$113,442	\$136,661	\$146,573	\$119,145	\$118,777	\$1.3M

## February 2008 Vandalism & Graffiti

Windows replaced: 151 @ \$16,320

Vandal Shields replaced: 831 @ \$11,821

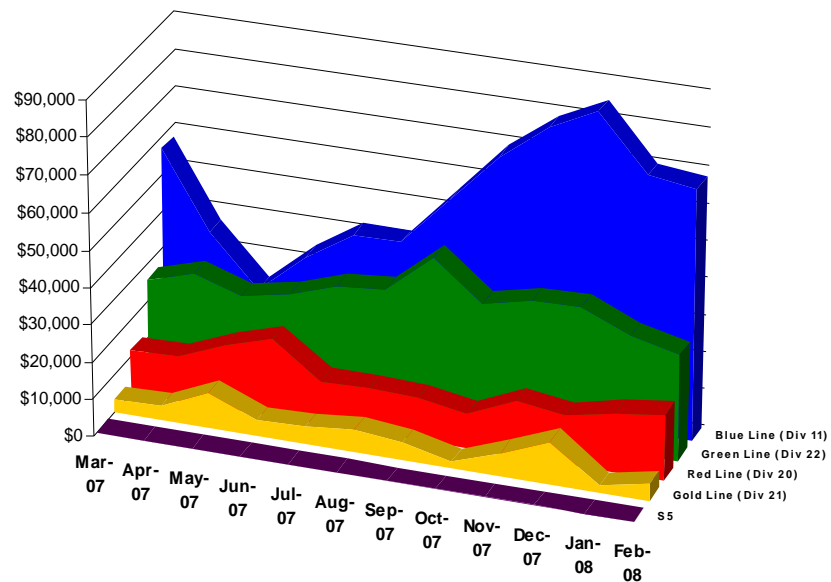
Seats cleaned: 5,541

Seats replaced: 53 @ \$2,381

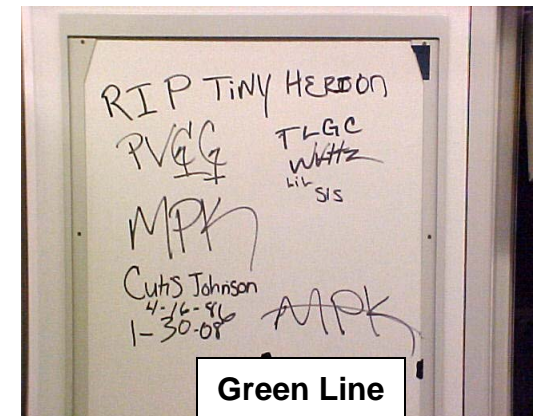
Ext./Int. repairs: \$3,957

Labor = \$84,298

Total for February 2008: \$118,777



# Graffiti Vandalism



# Car 516



## Graffiti Repair Cost

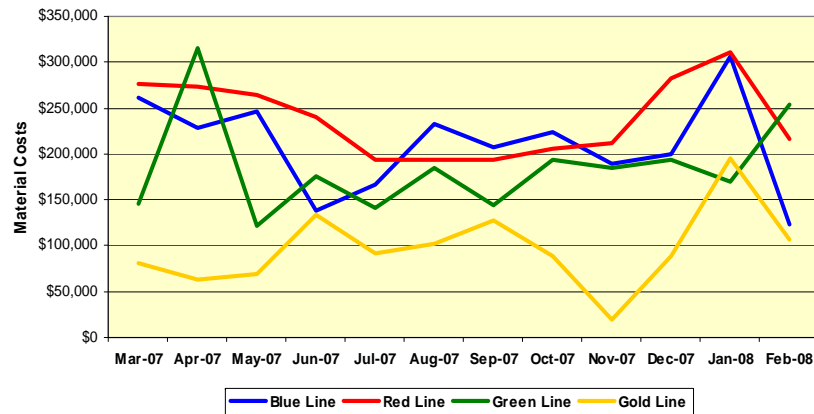
Qty	MTA PART#	DESCRIPTION	TX	U/M	Unit Price	TOTAL
8	N/A	LABOR, MAN HOURS, VEHICLE TOW AND WASH	N	MH	\$63.00	\$504.00
32	N/A	LABOR, MAN HOURS, EXTERIOR CLEAN	N	MH	\$63.00	\$2,016.00
16	N/A	LABOR, MAN HOURS, DECAL REPLACEMENT	N	MH	\$63.00	\$1,008.00
4	170891	DECAL, PAGE 3-151, ITEMS 6 AND 7	Y	EA	\$37.65	\$150.60
12	171048	DECAL, PAGE 3-151, ITEM 8	Y	EA	\$10.30	\$123.60
12	171049	DECAL, PAGE 3-151, ITEM 9	Y	EA	\$10.30	\$123.60
1	171061	DECAL, PAGE 3-151, ITEM 17	Y	EA	\$10.90	\$10.90
1	171062	DECAL, PAGE 3-151, ITEM 18	Y	EA	\$10.90	\$10.90
1	171063	DECAL, PAGE 3-151, ITEM 19	Y	EA	\$10.90	\$10.90
1	171064	DECAL, PAGE 3-151, ITEM 20	Y	EA	\$10.90	\$10.90
1	171064	DECAL, PAGE 3-151, ITEMS 21 AND 22	Y	EA	\$10.90	\$10.90
16	171058	DECAL, PAGE 3-151, ITEM 4	Y	EA	\$24.85	\$397.60
1		TAX 8.25%			\$70.12	\$70.12
TOTAL						\$4,448.02



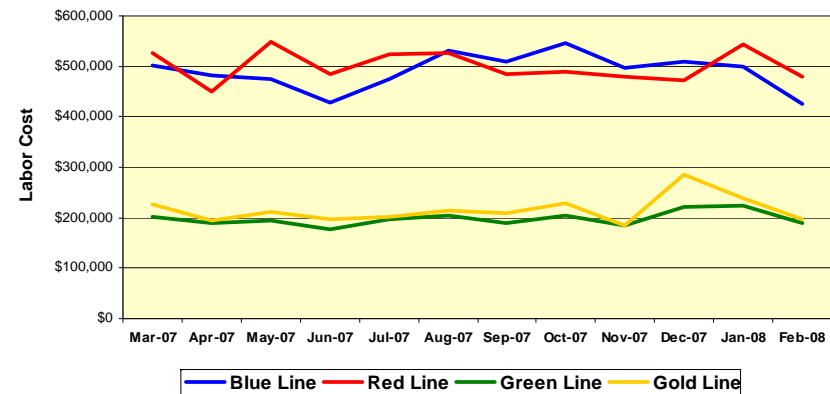
# Material and Labor Costs

Material Costs	Mar-07	Apr-07	May-07	Jun-07	Jul-07	Aug-07	Sep-07	Oct-07	Nov-07	Dec-07	Jan-08	Feb-08
Blue Line	\$241K	\$216K	\$236K	\$109K	\$177K	\$209K	\$176K	\$224K	\$189K	\$200K	\$307K	\$123K
Red Line	\$236K	\$252K	\$595K	\$227K	\$180K	\$147K	\$209K	\$205K	\$212K	\$283K	\$311K	\$217K
Green Line	\$139K	\$308K	\$117K	\$164K	\$143K	\$181K	\$139K	\$193K	\$185K	\$132K	\$169K	\$254K
Gold Line	\$76K	\$58K	\$65K	\$121K	\$91K	\$100K	\$119K	\$88K	\$19K	\$154K	\$195K	\$107K
Totals	\$693K	\$835K	\$1,015K	\$620K	\$591K	\$638K	\$643K	\$710K	\$559K	\$768K	\$982K	\$701K

**Material Costs**



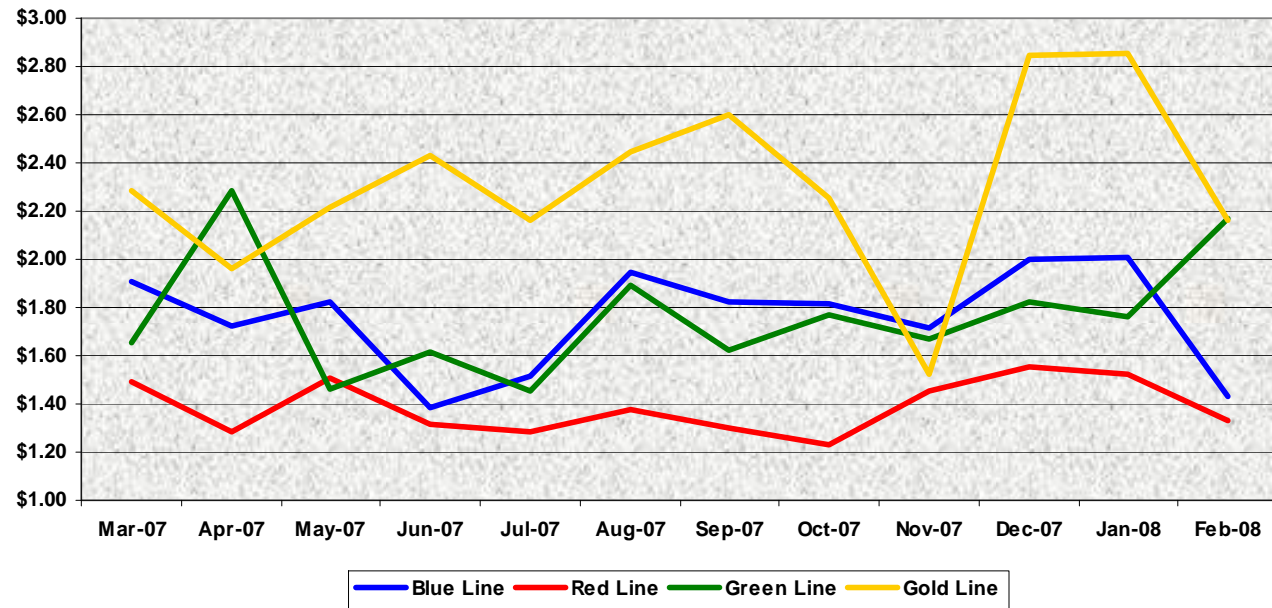
**Labor Costs**



Labor Costs	Mar-07	Apr-07	May-07	Jun-07	Jul-07	Aug-07	Sep-07	Oct-07	Nov-07	Dec-07	Jan-08	Feb-08
Blue Line	\$502K	\$482K	\$475K	\$427K	\$476K	\$532K	\$508K	\$545K	\$496K	\$508K	\$498K	\$426K
Red Line	\$526K	\$450K	\$548K	\$485K	\$523K	\$527K	\$485K	\$489K	\$479K	\$471K	\$542K	\$481K
Green Line	\$201K	\$190K	\$194K	\$177K	\$196K	\$204K	\$190K	\$204K	\$185K	\$220K	\$223K	\$190K
Gold Line	\$227K	\$194K	\$211K	\$196K	\$202K	\$214K	\$208K	\$229K	\$186K	\$235K	\$240K	\$196K
Totals	\$1,455K	\$1,315K	\$1,427K	\$1,286K	\$1,397K	\$1,477K	\$1,392K	\$1,466K	\$1,346K	\$1,484K	\$1,503K	\$1,293K

# Cost Per Mile

Cost per mile:	Mar-07	Apr-07	May-07	Jun-07	Jul-07	Aug-07	Sep-07	Oct-07	Nov-07	Dec-07	Jan-08	Feb-08	Average
Blue Line	\$1.86	\$1.69	\$1.80	\$1.31	\$1.52	\$1.94	\$1.82	\$1.82	\$1.72	\$2.00	\$1.78	\$1.43	\$1.76
Red Line	\$1.41	\$1.25	\$2.12	\$1.29	\$1.28	\$1.38	\$1.30	\$1.23	\$1.28	\$1.56	\$1.52	\$1.33	\$1.39
Green Line	\$1.62	\$2.26	\$1.44	\$1.56	\$1.45	\$1.89	\$1.62	\$1.77	\$1.53	\$1.82	\$1.76	\$2.17	\$1.76
Gold Line	\$2.26	\$1.93	\$2.19	\$2.34	\$2.16	\$2.45	\$2.60	\$2.25	\$1.52	\$2.84	\$2.86	\$2.16	\$2.31



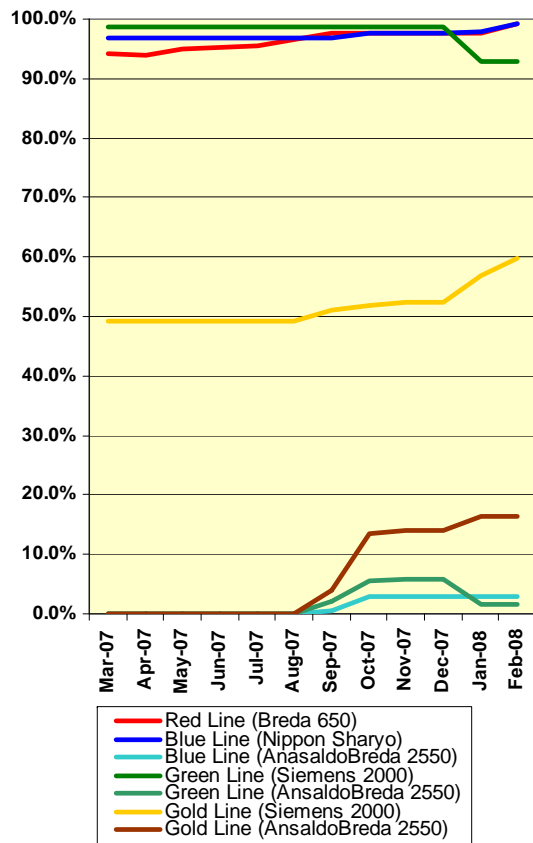
No facility costs are included

# Capital Projects

Division Number/ Location	Project Number/Name	Description	LOP Budget	Amount Spent	Amount Remaining	Scheduled Completion Date	New Projected Completion Date	Comments/Reason
Division 11 Blue Line	204009 – Improvements	Main Shop & Car Wash Extension	\$17,385,500	\$16,858,145	\$537,355	1/31/08	3/31/08	Contract Closeout. Warranty – Roof leak to be resolved.
Division 21 Gold Line	204017 – Improvements	Historic Aqueduct	\$4,500,000	\$1,690,445	\$2,809,555	5/23/08	Open	Awaiting National Historic Registry.
Division 22 Green Line	204037 – Improvements Phase 2	Wheel True Pit & Machine. Crossover Train Control	\$4,895,000	\$3,293,860	\$1,601,141	3/07/08	Open	WTM Pit Closeout. Awaiting WTM delivery & installation on 6/24/08. Crossover Train Control Closeout.
Division 20 Red Line	204047 – Car Wash & Cleaning Platform	Car Wash & Cleaning Platform	\$15,400,000	\$362,928	\$15,037,072	3/03/08	3/11/08	Extensive comments and changes to drawings.
Division 21 Gold Line	204053 – Improvements Phase 2	Body Shop, Cleaning Platforms Improvements	\$5,000,000	\$515,038	\$4,484,962	3/31/08	6/30/08	Project redefined resulting in delay. Finalize scope of work.
Division 20 Red Line	204054 – Additional Hoists	Additional two double-pair Vehicle Hoists	\$4,250,000	\$2,357,219	\$1,892,781	6/30/08	6/30/08	
Division 22 Green Line	204059 – Small Spray Paint Booth	Small Spray Paint Booth	\$150,000	\$55,908	\$94,092	5/16/08	5/16/08	



# Rail Fleet Services Instruction – February 2008



Description	Status	Start	End	Course Hours	Student Count	Training Hours
<b>Blue Line Training (Nippon Sharyo 865/2020 LRV):</b>						
RFS 865/2020 PANTOGRAPH	Complete	2/22/2008	2/22/2008	8	4	32
RFS 865/2020 LIGHTING & DEST.	Complete	2/20/2008	2/21/2008	16	4	64
RFS 865/2020 COUPLER	Complete	2/18/2008	2/19/2008	16	4	64
RFS 865/2020 CAR BODY	Complete	2/14/2008	2/15/2008	16	4	64
RFS 865/2020 DOOR CONTROL SYS	Complete	2/11/2008	2/13/2008	24	4	96
RFS 865/2020 TRUCKS	Complete	2/4/2008	2/8/2008	40	4	160
WORD 2003 - BEGINNER	Complete	2/13/2008	2/13/2008	6	2	12
CRYSTAL REPORTS X	Complete	2/5/2008	2/5/2008	6	1	6
<b>Total Blue Line Training (Hours):</b>						<b>498</b>

<b>Red Line Training (Breda A650 HRV):</b>						
FORKLIFT (INDUSTRIAL TRUCKS)	Completed	2/8/2008	2/28/2008	4	5	20
CRYSTAL REPORTS X	Complete	2/5/2008	2/5/2008	6	1	6
RFS SIMMONS WHEEL PRESS	Completed	2/11/2008	2/13/2008	24	3	72
<b>Total Red Line Training (Hours):</b>						<b>98</b>

<b>Green Line Training (Siemens 2000 LRV):</b>						
MOP EAP AS A SUPERVISORY TOOL	Complete	2/5/2008	2/5/2008	1.5	2	3
FALL PROTECTION	Complete	2/13/2008	2/13/2008	2	1	2
BEHIND THE WHEEL	Complete	2/13/2008	2/13/2008	6	1	5
CLASSROOM INSTRUCTION	Complete	2/13/2008	2/13/2008	2	1	2
CLASSROOM INSTRUCTION	Complete	2/13/2008	2/13/2008	16.25	1	16.25
DRUG AND ALCOHOL	Complete	2/13/2008	2/13/2008	2	2	4
IN SERVICE	Complete	2/13/2008	2/13/2008	10.75	2	21.5
NEW SERVICE ATTENDANT	Complete	2/13/2008	2/13/2008	32	2	64
HAZARD COMMUNICATION: IDENTIFYING THE DANGERS	Complete	2/12/2008	2/12/2008	2	2	4
BLOODBORNE PATHOGENS	Complete	2/12/2008	2/12/2008	2	2	4
PERSONAL PROTECTIVE EQUIPMENT	Complete	2/11/2008	2/11/2008	2	2	4
SAFETY ORIENTATION: ON ALERT	Complete	2/11/2008	2/11/2008	2	2	4
CLASSROOM INSTRUCTION	Complete	2/8/2008	2/8/2008	8	2	16
SMART DRIVING (VTT)	Complete	2/8/2008	2/8/2008	8	2	16
FORKLIFT CERTIFICATION	Complete	2/6/2008	2/6/2008	2	2	4
BUS CLEANING AND SERVICING PROCEDURES	Complete	2/4/2008	2/4/2008	2	2	4
CNG ORIENTATION TRAINING (T.S.I.)	Complete	2/4/2008	2/4/2008	4	2	8
HAZMAT MATERIAL & PPE SAFETY	Complete	2/4/2008	2/4/2008	2	2	4
HAZMAT WASTE GENERATOR TRAINING	Complete	2/4/2008	2/4/2008	2	2	4
NEW SERVICE ATTENDANT ORIENTATION	Complete	2/4/2008	2/4/2008	32	2	64
OSHA - FORKLIFT TRAINING	Complete	2/4/2008	2/4/2008	4	2	8
ETD COMMUNICATING ONE-ON-ONE	Complete	2/21/2008	2/21/2008	3	2	6
<b>Total Green Line Training (Hours):</b>						<b>267.75</b>

<b>Gold Line Training (Siemens 2000 LRV):</b>						
DRUG-AND-ALCOHOL-FREE WORK ENVIRONMENT POLICY	Complete	2/6/2008	2/6/2008	4	3	12
EXCEL - 2003 BEGINNER	Complete	2/6/2008	2/6/2008	6	1	6
ETD STRESS MANAGEMENT	Complete	2/20/2008	2/20/2008	3	1	3
RFS SIEMENS 2000 CARBODY	Complete	2/28/2008	2/29/2008	32	4	128
RFS SIEMENS 2000 VEHICLE SYSTEMS	Complete	2/12/2008	2/15/2008	32	4	128
RFS PARTS CATALOG SYSTEM	Complete	2/19/2008	2/19/2008	2	4	8
RFS ELECTRICAL SCHEMATICS	Complete	2/21/2008	2/22/2008	22	4	88
<b>Total Gold Line Training (Hours):</b>						<b>373</b>

**Total Rail Fleet Services Instruction for the month of February 2008 (Hours): 1,236.8**

<b>Core Vehicle Training Completed:</b>	<b>BLUE</b>	<b>RED</b>	<b>GREEN</b>	<b>GOLD</b>
Percentage of core vehicle training complete:	99.2%	99.1%	92.9%	59.9%
AnsaldoBreda 2550 Training Completed:	3.0%	N/A	1.7%	16.5%
Average Specialist Rail Experience Level in Years:	9.2	7.6	6.9	6.3

