



# **Rail Fleet Services Monthly Report January, 2008**



**Metro**

# Table of Contents

• Safety	
– Industrial Injuries	Page 1
– Rail Vehicle Accidents & Major Incidents	Page 2
• Customer Service	
– Service Delivery – AM/PM Pull-Outs	Page 3
– Mean Miles Between Failures (Major)	Page 4
– Repeater Car Details	Page 5
• Business Processes	
– Incident Problems & Locations Blue & Red Lines	Page 6
– Incident Problems & Locations Green & Gold Lines	Page 7
– Preventative Maintenance Compliance	Page 8
• Finance	
– Vandalism & Graffiti Costs	Page 9
– Graffiti Vandalism	Page 10
– Graffiti Costs	Page 11
– Material & Labor Costs	Page 12
– Cost per mile	Page 13
• Growth	
– Rail Fleet Service Training	Page 14

# Industrial Injuries – Lost Work Hours

	Feb-07	Mar-07	Apr-07	May-07	Jun-07	Jul-07	Aug-07	Sep-07	Oct-07	Nov-07	Dec-07	Jan-08	Year-to-Date
Blue Line	120	144	120	21	0	0	72	48	168	168	133	24	1,018
Red Line	152	224	336	304	200	264	272	168	184	96	0	0	2,200
Green Line	64	0	0	0	0	0	0	0	2	0	0	160	226
Gold Line	320	216	264	288	392	264	368	328	80	160	176	72	2,928
Totals	656	584	720	613	592	528	712	544	434	424	309	256	6,372

## January 2008 Lost Work Hours

### Blue Line – 110 Assigned Employees (107 Active)

- Service Attendant – 24 hours

### Red Line – 107 Assigned Employees (102 Active)

### Green Line – 44 Assigned Employees (42 Active)

- Rail Body/Paint Repairer – 160 hours

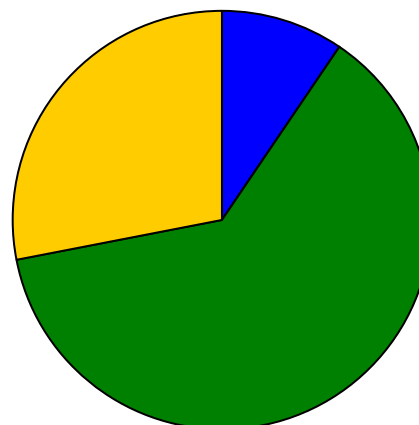
### Gold Line – 46 Assigned Employees (45 Active)

- Service Attendant – 176 hours

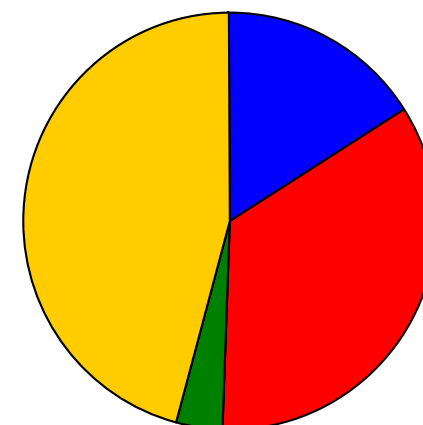
Total Lost Work Hours for January 2008 – 256 hours

Total Lost Work Hours for 12-Months - 6,372 Hours

## January 2008 Lost Work Hours



## Year-to-Date



Blue Line Red Line Green Line Gold Line



# Rail Vehicle Accidents & Major Incidents

	Feb-07	Mar-07	Apr-07	May-07	Jun-07	Jul-07	Aug-07	Sep-07	Oct-07	Nov-07	Dec-07	Jan-08
<b>Blue Line</b>	<b>\$1,027</b>	<b>\$1,485</b>	<b>\$6,869</b>	<b>\$57</b>	<b>\$9,551</b>	<b>\$4,652</b>	<b>\$46,144</b>	<b>\$7,532</b>	<b>\$0</b>	<b>\$4,661</b>	<b>\$4,489</b>	<b>\$8,500</b>
<b>Red Line</b>	<b>\$0</b>	<b>\$0</b>	<b>\$0</b>	<b>\$0</b>	<b>\$0</b>	<b>\$0</b>	<b>\$0</b>	<b>\$0</b>	<b>\$0</b>	<b>\$203</b>	<b>\$0</b>	<b>\$0</b>
<b>Green Line</b>	<b>\$0</b>	<b>\$0</b>	<b>\$0</b>	<b>\$0</b>	<b>\$0</b>	<b>\$0</b>	<b>\$0</b>	<b>\$0</b>	<b>\$0</b>	<b>\$6,036</b>	<b>\$0</b>	<b>\$0</b>
<b>Gold Line</b>	<b>\$0</b>	<b>\$0</b>	<b>\$0</b>	<b>\$0</b>	<b>\$0</b>	<b>\$0</b>	<b>\$0</b>	<b>\$33,925</b>	<b>\$34,189</b>	<b>\$0</b>	<b>\$326</b>	<b>\$340</b>
<b>Totals</b>	<b>\$1,027</b>	<b>\$1,485</b>	<b>\$6,869</b>	<b>\$57</b>	<b>\$9,551</b>	<b>\$4,652</b>	<b>\$46,144</b>	<b>\$41,457</b>	<b>\$34,189</b>	<b>\$10,900</b>	<b>\$4,815</b>	<b>\$8,840</b>

## January 2008 Rail Vehicle Accidents & Major Incidents

### Blue Line

- Jan. 11, Train vs. Auto at Washington and Hooper, Track 2 (\$2,126)
- Jan. 12 Train made contact with fence pole at Manville (\$2,516)
- Jan. 25 Train vs. Auto at Pacific & 8<sup>th</sup> 10-73, Train 2 Operator T-82, consist 104a-147-110 (\$3,858)

### Gold Line

- January 16, 2008 Trains 231, 242 vs. Cost (\$340)



January 11, 2008 Accident Train vs. Auto at Blue Line

The monthly accident charges listed above only represent only the expenses incurred in that particular month and are not a total repair of an individual accident.

# Service Delivery – AM/PM Pull-Outs

## Cars Available for AM/PM Pull-Outs

	Feb-07	Mar-07	Apr-07	May-07	Jun-07	Jul-07	Aug-07	Sep-07	Oct-07	Nov-07	Dec-07	Jan-08
Blue Line	100%	100%	100%	100%	100%	100%	100%	100%	100%	99%	100%	100%
Red Line	100%	100%	100%	100%	100%	100%	100%	100%	100%	100%	100%	100%
Green Line	100%	100%	100%	100%	100%	100%	100%	100%	100%	100%	100%	100%
Gold Line	100%	100%	100%	100%	100%	100%	100%	100%	100%	100%	100%	100%

### Blue Line – Fleet Size 69 cars

- Weekday pull-out: 60 cars
- Weekend pull-out: 36 cars
- **Monthly Mileage: 400,795 miles**

### Red Line - Fleet Size 104 cars

- Weekday pull-out: 70 cars
- Weekend pull-out: 48 cars
- **Monthly Mileage: 559,836 miles**

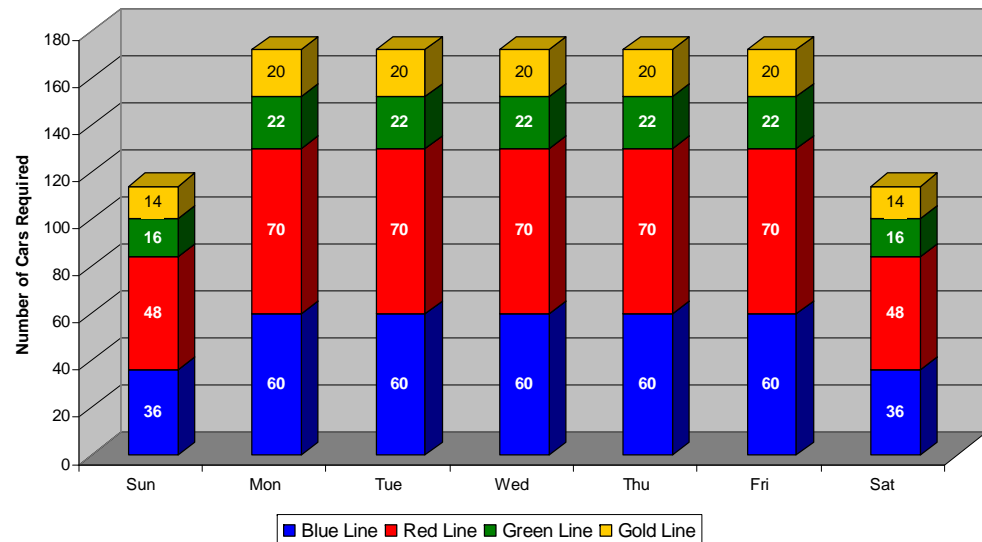
### Green Line – Fleet Size 28 cars

- Weekday pull-out: 22 cars
- Weekend pull-out: 16 cars
- **Monthly Mileage: 221,991 miles**

### Gold Line – Fleet Size 24 cars

- Weekday pull-out: 20 cars
- Weekend pull-out: 14 cars
- **Monthly Mileage: 151,989 miles**

## AM/PM Pull-Out Requirements



# Mean Miles Between Failures (Major)

January 2008

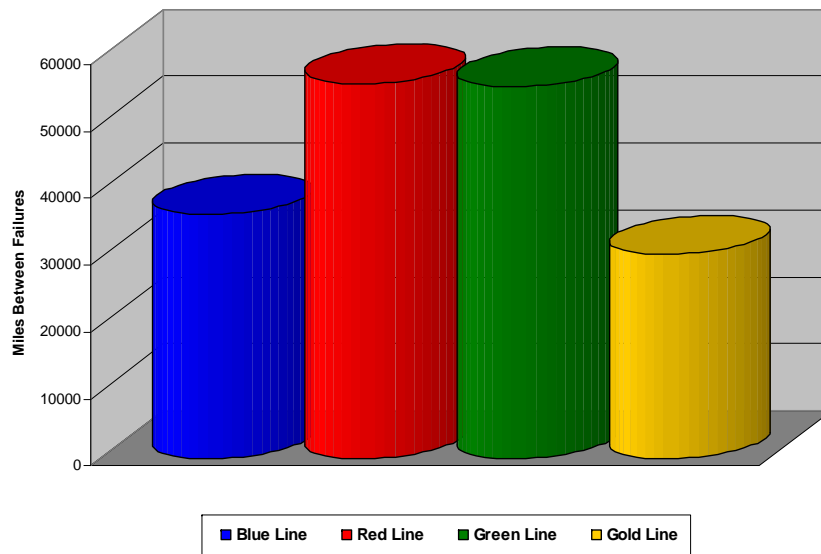
## FTA Major Failures

Blue Line: 36,436 miles (11 FTA Major Failures)

Red Line: 55,984 miles (10 FTA Major Failures)

Green Line: 55,498 miles (4 FTA Major Failures)

Gold Line: 30,398 miles (5 FTA Major Failures)



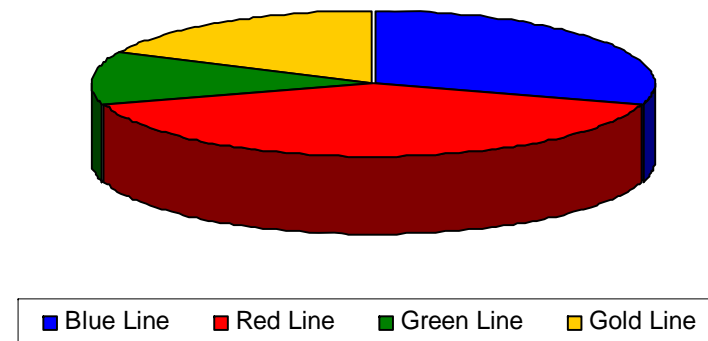
## Repeat Failures

Blue Line: 15 Repeat Failures

Red Line: 23 Repeat Failures

Green Line: 6 Repeat Failures

Gold Line: 9 Repeat Failures



# Repeater Car Details

System	Car #	No. of Repeats	Car #	No. of Repeats	Car #	No. of Repeats	Car #	No. of Repeats
Automatic Train Protection	141 168	1 2			203	1	240	2
Car Body	147	1						
Doors	122 137 151 153 154	1 1 1 1 1	543 544 559	1 1 1	218 224	1 1	248 249	1 3
Friction Brakes	120	1	540 541 533 543 548 576 586 597 602 533	2 1 1 1 1 1 1 1 1 1				
HSCB Trip	125	1						
Propulsion	124 133 138 139	1 1 1 1	511 556 586	1 1 1	203 207 208	1 1 1	230	1
HVAC			570 604	2 1			242	1
Low Air Pressure			509	1				
PA Intercom			604	1			233	1
Truck/Wheel/Flat			567	1				
TOTALS	14	15	21	23	6	6	6	9

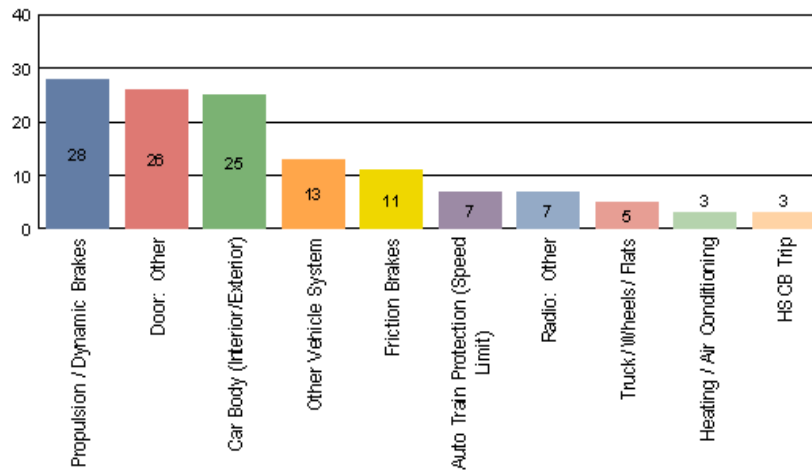


**Metro**

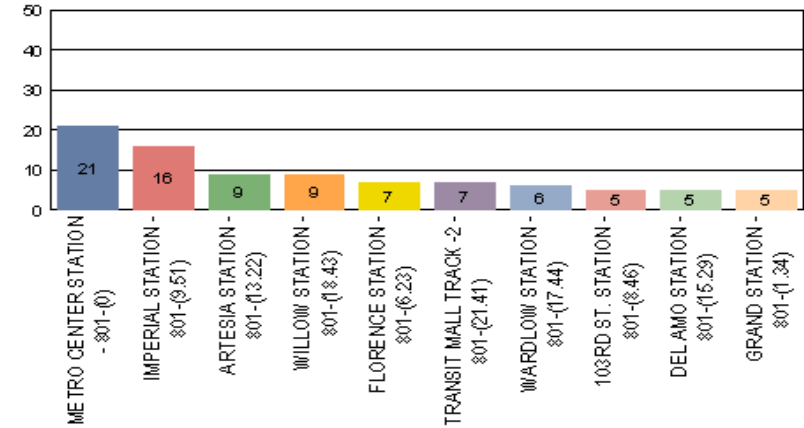
# Incident Problems & Locations – Blue & Red Lines

## Blue Line – January 2008

Count of the Top 10 Incident Problems

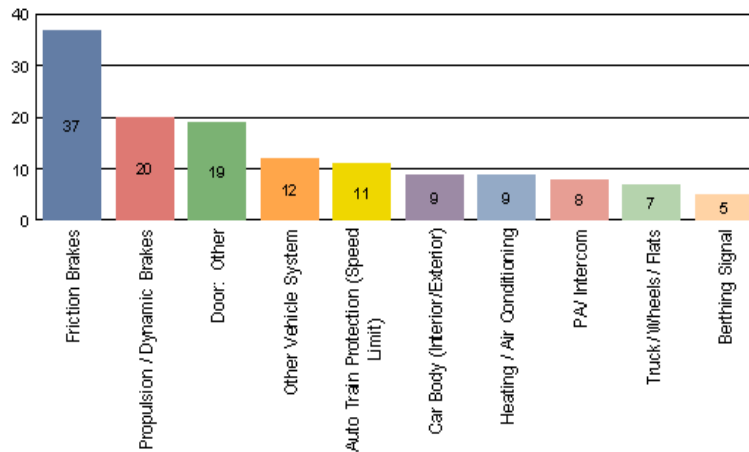


Count of the Top 10 Incident Locations

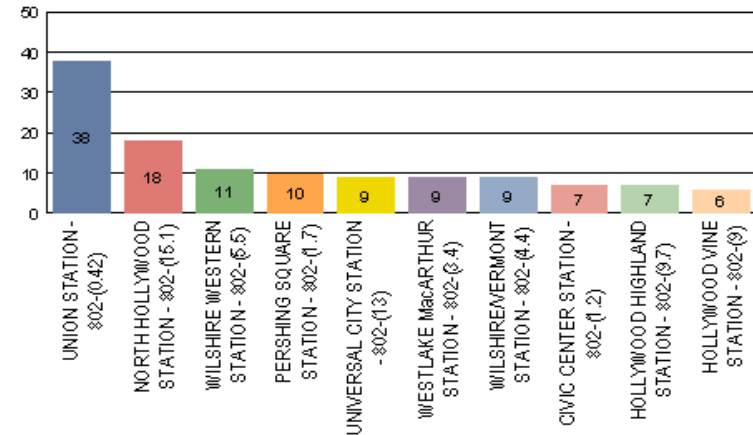


## Red Line – January 2008

Count of the Top 10 Incident Problems



Count of the Top 10 Incident Locations

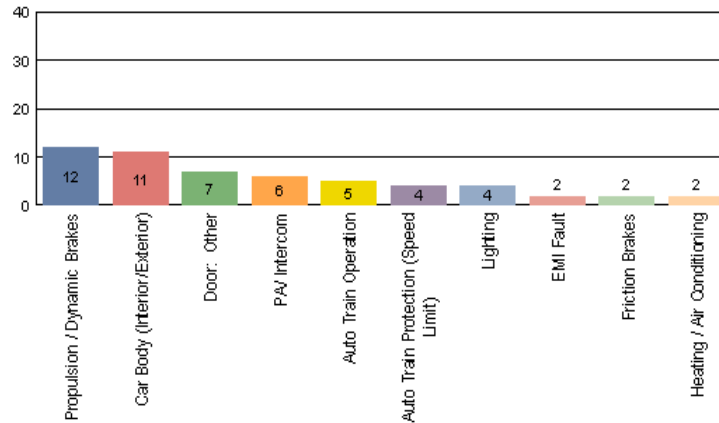




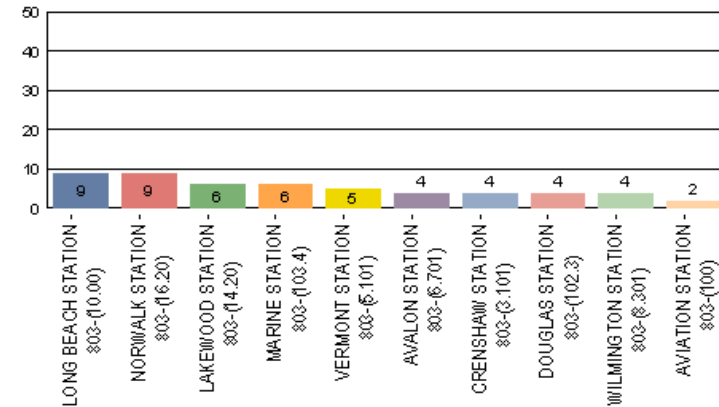
# Incident Problems & Locations – Green & Gold Lines

## Green Line - January 2008

Count of the Top 10 Incident Problems

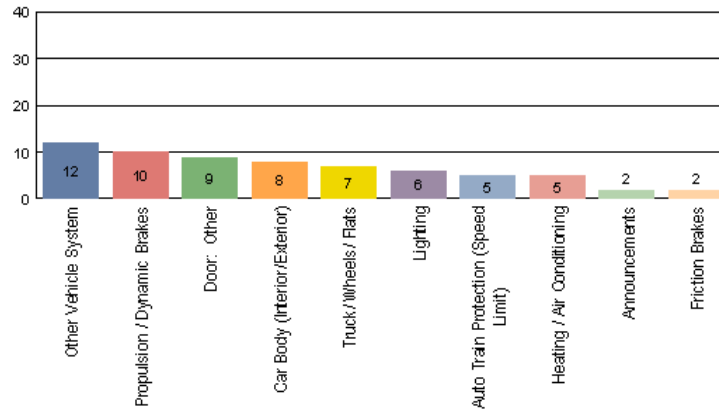


Count of the Top 10 Incident Locations

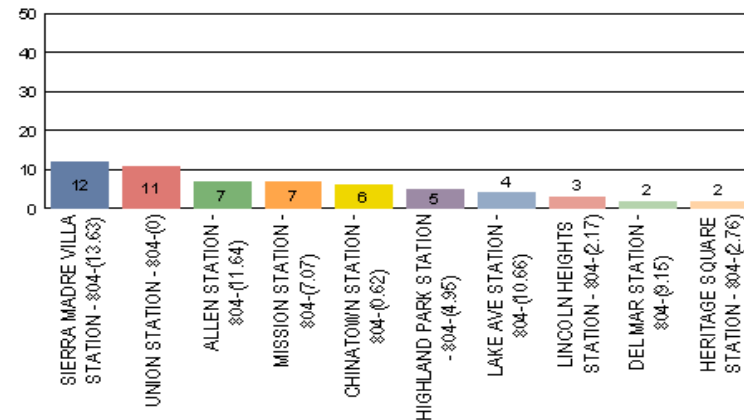


## Gold Line - January 2008

Count of the Top 10 Incident Problems



Count of the Top 10 Incident Locations



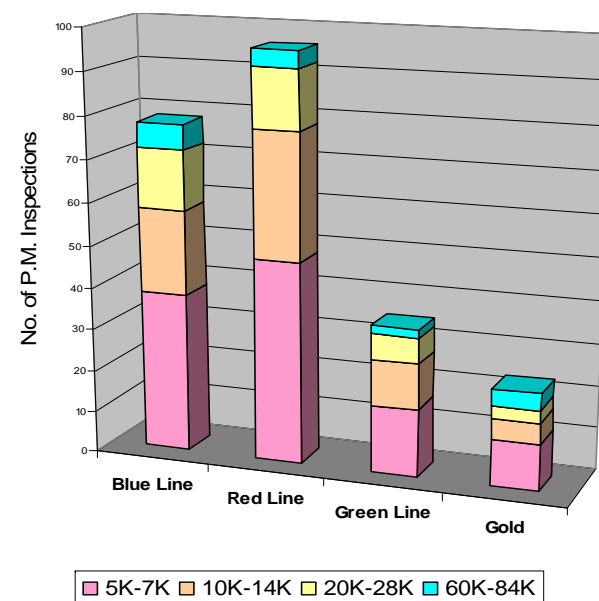
# Preventative Maintenance Compliance

	Feb-07	Mar-07	Apr-07	May-07	Jun-07	Jul-07	Aug-07	Sep-07	Oct-07	Nov-07	Dec-07	Jan-08
Blue Line	100%	100%	100%	100%	100%	100%	100%	100%	100%	100%	100%	100%
Red Line	100%	100%	97%	100%	100%	100%	100%	100%	100%	100%	99%	100%
Green Line	100%	100%	100%	100%	100%	100%	100%	100%	100%	100%	100%	95%
Gold Line	100%	100%	100%	100%	100%	100%	100%	100%	100%	100%	100%	100%

## January 2008 Preventative Maintenance Inspections

No. of P.M. Inspections	5K	10K	20K	60K	Totals
Blue Line	38	20	14	6	78

No. of P.M. Inspections	7K	14K	28K	84K	Totals
Red Line	48	30	14	4	96
Green Line	16	11	6	2	35
Gold Line	11	5	3	4	23



# Vandalism & Graffiti Report

	Feb-07	Mar-07	Apr-07	May-07	Jun-07	Jul-07	Aug-07	Sep-07	Oct-07	Nov-07	Dec-07	Jan-08	Year To Date
Blue Line	\$72,185	\$56,911	\$36,165	\$22,571	\$33,340	\$41,364	\$41,364	\$54,873	\$68,406	\$78,067	\$84,209	\$69,383	\$659K
Red Line	\$16,387	\$11,893	\$12,098	\$17,357	\$21,464	\$11,906	\$11,906	\$11,645	\$9,355	\$15,156	\$13,231	\$16,100	\$168K
Green Line	\$32,943	\$26,026	\$29,903	\$25,863	\$28,478	\$32,716	\$33,547	\$44,227	\$33,832	\$37,022	\$37,495	\$31,632	\$394K
Gold Line	\$6,158	\$3,522	\$4,094	\$9,778	\$4,347	\$4,840	\$5,992	\$4,980	\$4,980	\$6,416	\$11,638	\$2,030	\$65K
Totals	\$127,673	\$98,352	\$82,260	\$75,569	\$87,629	\$90,826	\$92,809	\$115,725	\$113,442	\$136,661	\$146,573	\$119,145	\$1,287M

## January 2008 Vandalism & Graffiti

Windows replaced: 103 @ \$11,743

Vandal Shields replaced: 692 @ \$11,865

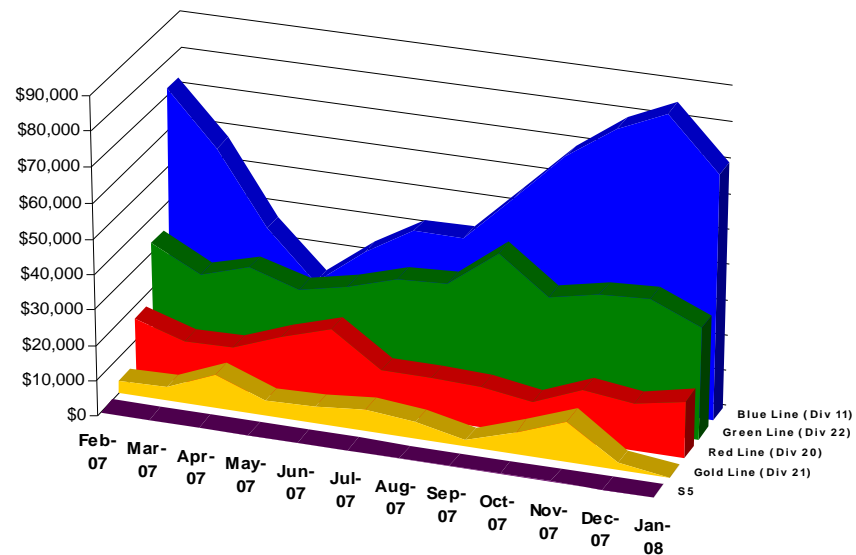
Seats cleaned: 5,854

Seats replaced: 64 @ \$2,964

Ext./Int. repairs: \$3,637

Labor = \$88,937

Total for January 2008: \$119,146



# Graffiti Vandalism



Red Line



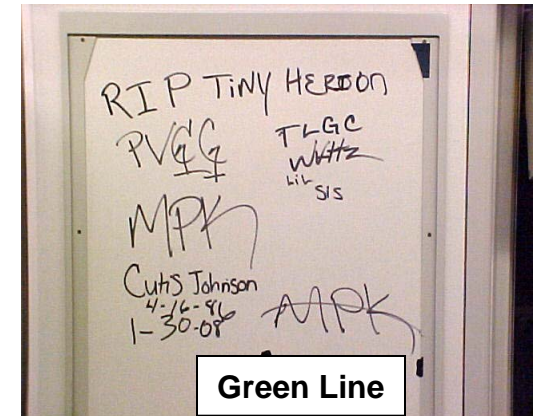
Blue Line



Gold Line



Red Line



Green Line

# Car 516



## Graffiti Repair Cost

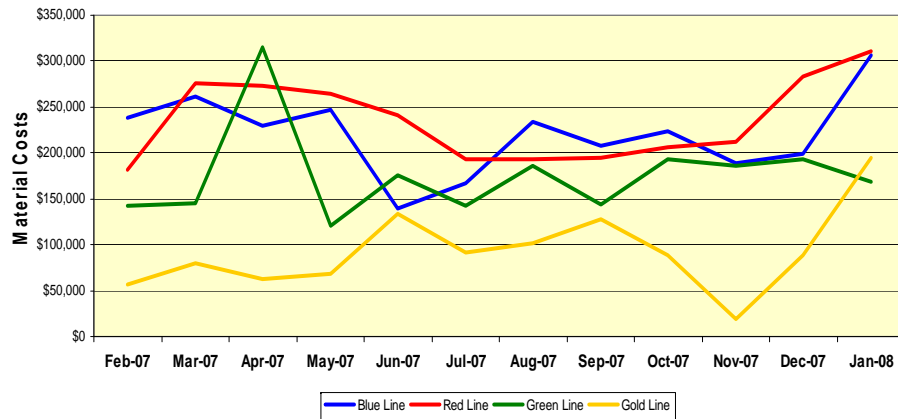
Qty	MTA PART#	DESCRIPTION	TX	U/M	Unit Price	TOTAL
8	N/A	LABOR, MAN HOURS, VEHICLE TOW AND WASH	N	MH	\$63.00	\$504.00
32	N/A	LABOR, MAN HOURS, EXTERIOR CLEAN	N	MH	\$63.00	\$2,016.00
16	N/A	LABOR, MAN HOURS, DECAL REPLACEMENT	N	MH	\$63.00	\$1,008.00
4	170891	DECAL, PAGE 3-151, ITEMS 6 AND 7	Y	EA	\$37.65	\$150.60
12	171048	DECAL, PAGE 3-151, ITEM 8	Y	EA	\$10.30	\$123.60
12	171049	DECAL, PAGE 3-151, ITEM 9	Y	EA	\$10.30	\$123.60
1	171061	DECAL, PAGE 3-151, ITEM 17	Y	EA	\$10.90	\$10.90
1	171062	DECAL, PAGE 3-151, ITEM 18	Y	EA	\$10.90	\$10.90
1	171063	DECAL, PAGE 3-151, ITEM 19	Y	EA	\$10.90	\$10.90
1	171064	DECAL, PAGE 3-151, ITEM 20	Y	EA	\$10.90	\$10.90
1	171064	DECAL, PAGE 3-151, ITEMS 21 AND 22	Y	EA	\$10.90	\$10.90
16	171058	DECAL, PAGE 3-151, ITEM 4	Y	EA	\$24.85	\$397.60
1		TAX 8.25%			\$70.12	\$70.12
TOTAL						\$4,448.02



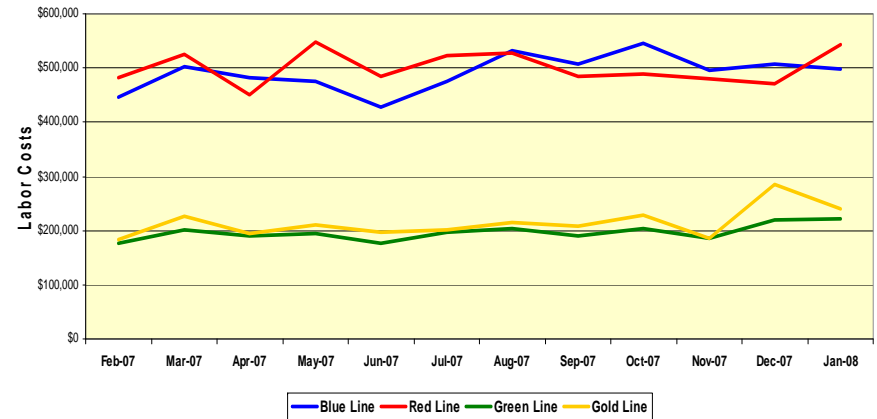
# Material and Labor Costs

Material Costs	Feb-07	Mar-07	Apr-07	May-07	Jun-07	Jul-07	Aug-07	Sep-07	Oct-07	Nov-07	Dec-07	Jan-08
Blue Line	\$228K	\$241K	\$216K	\$236K	\$109K	\$177K	\$209K	\$176K	\$224K	\$189K	\$200K	\$307K
Red Line	\$178K	\$236K	\$252K	\$595K	\$227K	\$180K	\$147K	\$209K	\$205K	\$212K	\$283K	\$311K
Green Line	\$136K	\$139K	\$308K	\$117K	\$164K	\$143K	\$181K	\$139K	\$193K	\$185K	\$132K	\$169K
Gold Line	\$52K	\$76K	\$58K	\$65K	\$121K	\$91K	\$100K	\$119K	\$88K	\$19K	\$154K	\$195K
Totals	\$594K	\$693K	\$835K	\$1,015K	\$620K	\$591K	\$638K	\$643K	\$710K	\$559K	\$768K	\$982K

**Material Costs**



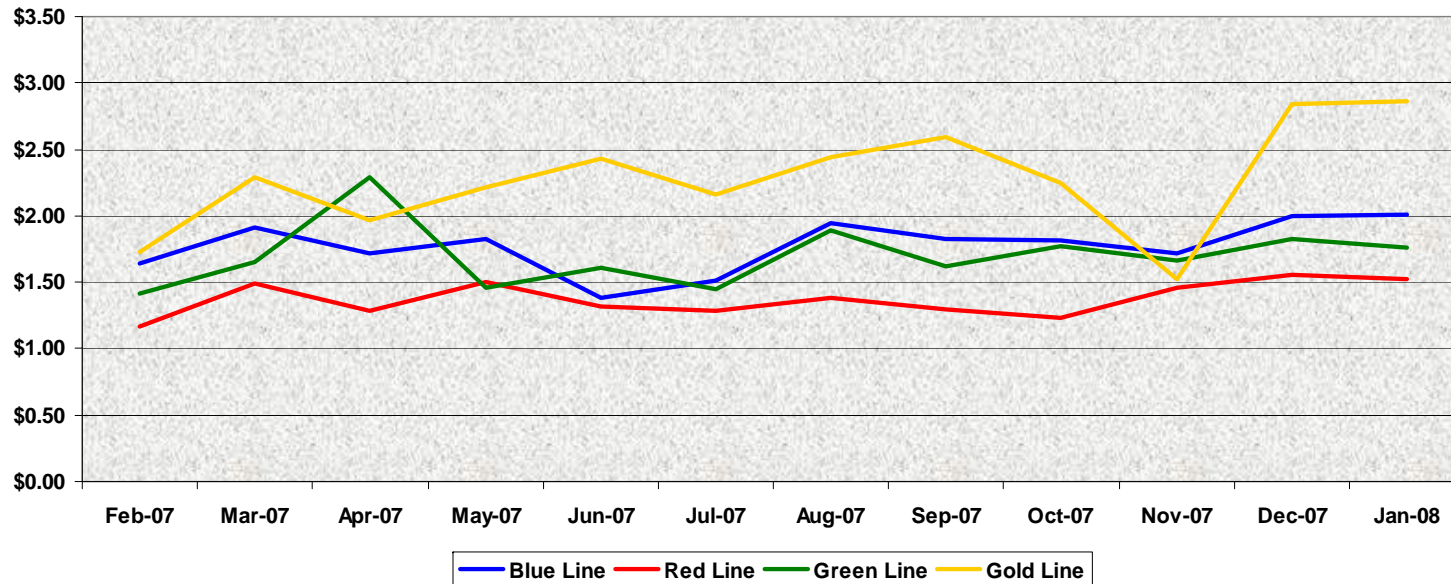
**Labor Costs**



Labor Costs	Feb-07	Mar-07	Apr-07	May-07	Jun-07	Jul-07	Aug-07	Sep-07	Oct-07	Nov-07	Dec-07	Jan-08
Blue Line	\$446K	\$502K	\$482K	\$475K	\$427K	\$476K	\$532K	\$508K	\$545K	\$496K	\$508K	\$498K
Red Line	\$483K	\$526K	\$450K	\$548K	\$485K	\$523K	\$527K	\$485K	\$489K	\$479K	\$471K	\$542K
Green Line	\$178K	\$201K	\$190K	\$194K	\$177K	\$196K	\$204K	\$190K	\$204K	\$185K	\$220K	\$223K
Gold Line	\$182K	\$227K	\$194K	\$211K	\$196K	\$202K	\$214K	\$208K	\$229K	\$186K	\$235K	\$240K
Totals	\$1,289K	\$1,455K	\$1,315K	\$1,427K	\$1,286K	\$1,397K	\$1,477K	\$1,392K	\$1,466K	\$1,346K	\$1,484K	\$1,503K

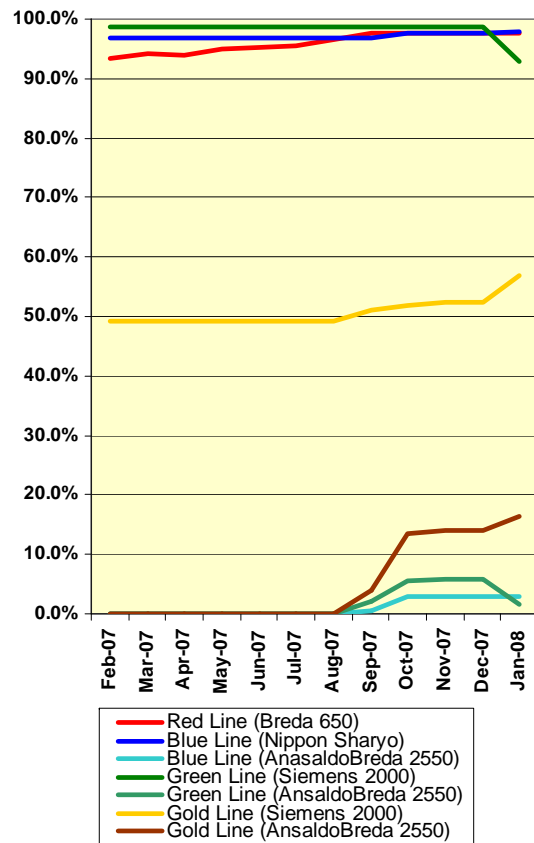
# Cost Per Mile

Cost per mile:	Feb-07	Mar-07	Apr-07	May-07	Jun-07	Jul-07	Aug-07	Sep-07	Oct-07	Nov-07	Dec-07	Jan-08	Average
Blue Line	\$1.62	\$1.86	\$1.69	\$1.80	\$1.31	\$1.52	\$1.94	\$1.82	\$1.82	\$1.72	\$2.00	\$1.78	\$1.73
Red Line	\$1.16	\$1.41	\$1.25	\$2.12	\$1.29	\$1.28	\$1.38	\$1.30	\$1.23	\$1.28	\$1.56	\$1.52	\$1.37
Green Line	\$1.39	\$1.62	\$2.26	\$1.44	\$1.56	\$1.45	\$1.89	\$1.62	\$1.77	\$1.53	\$1.82	\$1.76	\$1.70
Gold Line	\$1.69	\$2.26	\$1.93	\$2.19	\$2.34	\$2.16	\$2.45	\$2.60	\$2.25	\$1.52	\$2.84	\$2.86	\$2.28



No facility costs are included

# Rail Fleet Services Instruction – January 2008



Description	Status	Start	End	Course Hours	Student Count	Training Hours
<b>Blue Line Training (Nippon Sharyo 865/2020 LRV):</b>						
M3 MAINTENANCE LEADER	Complete	1/29/2008	1/29/2008	8	2	16
P-CARD TRAINING FOR CARD HOLDERS AND AOE	Complete	1/22/2008	1/22/2008	2	1	2
ACCESS 2003 - BEGINNER	Complete	1/17/2008	1/17/2008	6	1	6
<b>Total Blue Line Training (Hours):</b>						<b>24</b>

<b>Red Line Training (Breda A650 HRV):</b>						
RFS BRED A650 ATO PM REFRESHER	Completed	1/1/2008	1/31/2008	4	16	64
P-CARD TRAINING FOR CARD HOLDERS AND AOS	Completed	1/22/2008	1/22/2008	2	2	4
MOP TITLE VII AND SEXUAL HARASSMENT PREVENTION	Completed	1/8/2008	1/8/2008	2	1	2
ACCESS 2003 - BEGINNER	Completed	1/17/2008	1/17/2008	6	1	6
<b>Total Red Line Training (Hours):</b>						<b>76</b>

<b>Green Line Training (Siemens 2000 LRV):</b>						
M3 MAINTENANCE LEADER	Complete	1/28/2008	1/28/2008	8	5	40
FRONTLINE SAFETY TRAINING	Complete	1/28/2008	1/28/2008	3	1	3
ANGER MANAGEMENT	Complete	1/23/2008	1/23/2008	3	2	6
TRANSIT TERRORISM AWARENESS TRAINING	Complete	1/17/2008	1/17/2008	1	2	2
MOP TITLE VII AND SEXUAL HARASSMENT PREVENTION	Complete	1/8/2008	1/8/2008	2	1	2
<b>Total Green Line Training (Hours):</b>						<b>53</b>

<b>Gold Line Training (Siemens 2000 LRV):</b>						
RFS SIEMENS 2000 GE HARMON ATF	Complete	1/22/2008	1/23/2008	24	6	144
ANGER MANAGEMENT	Complete	1/23/2008	1/23/2008	3	1	3
<b>Total Gold Line Training (Hours):</b>						<b>147</b>

**Total Rail Fleet Services Instruction for the month of January 2008 (Hours): 300.0**

<b>Core Vehicle Training Completed:</b>	<b>BLUE</b>	<b>RED</b>	<b>GOLD</b>	<b>GREEN</b>
Percentage of core vehicle training complete:	97.8%	97.6%	57.0%	92.9%
AnsaldoBreda 2550 Training Completed:	3.0%	N/A	16.5%	1.7%
Average Specialist Rail Experience Level in Years:	9.1	7.5	6.3	6.9