



Rail Fleet Services Monthly Report July, 2008



Metro

Table of Contents

• Safety	
– Industrial Injuries	Page 1
– Rail Vehicle Accidents & Major Incidents	Page 2
• Customer Service	
– Service Delivery – AM/PM Pull-Outs	Page 3
– Reliability/Availability – Red Line & Gold Line	Page 4
– Reliability/Availability – Blue Line & Green Line	Page 5
– Mean Miles Between Failures (Major)	Page 6
– Repeater Car Details	Page 7
• Business Processes	
– Incident Problems & Locations: Blue & Red Lines	Page 8
– Incident Problems & Locations: Green & Gold Lines	Page 9
– Preventative Maintenance Compliance	Page 10
• Finance	
– Vandalism & Graffiti Costs	Page 11
– Graffiti Pictures	Page 12
– Material & Labor Costs	Page 13
– Cost per mile	Page 14
– Capital Projects	Page 15
• Growth	
– Rail Fleet Service Training	Page 16

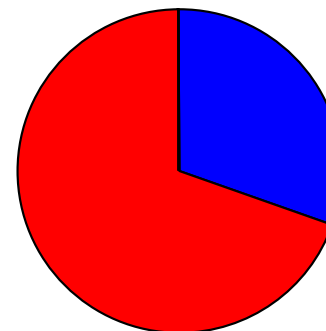
Industrial Injuries – Lost Work Hours

July 2008

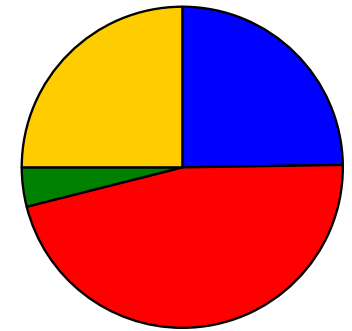
	Aug-07	Sep-07	Oct-07	Nov-07	Dec-07	Jan-08	Feb-08	Mar-08	Apr-08	May-08	Jun-08	Jul-08	Year to Date
Blue Line	72	48	160	160	133	16	0	80	48	160	112	152	1,141
Red Line	256	160	184	152	0	0	184	80	48	368	344	344	2,120
Green Line	0	0	2	0	0	160	24	0	0	0	0	0	186
Gold Line	352	312	80	160	176	64	0	0	0	0	0	0	1,144
Totals	680	520	426	472	309	240	208	160	96	528	456	496	4,591

	Employees		July 2008 Lost Work Hours		
	Assigned	Active	Service Attendants	Maint. Specialists	July 2008 Total Hours
Blue Line	112	106	152	0	152
Red Line	113	109	336	8	344
Green Line	47	46	0	0	0
Gold Line	45	43	0	0	0
Totals	314	301	488	8	496
Total Lost Work Hours for 12-months = 4,591 hours					

July 2008 Lost Work Hours



Year-to-Date



Rail Vehicle Accidents & Major Incidents

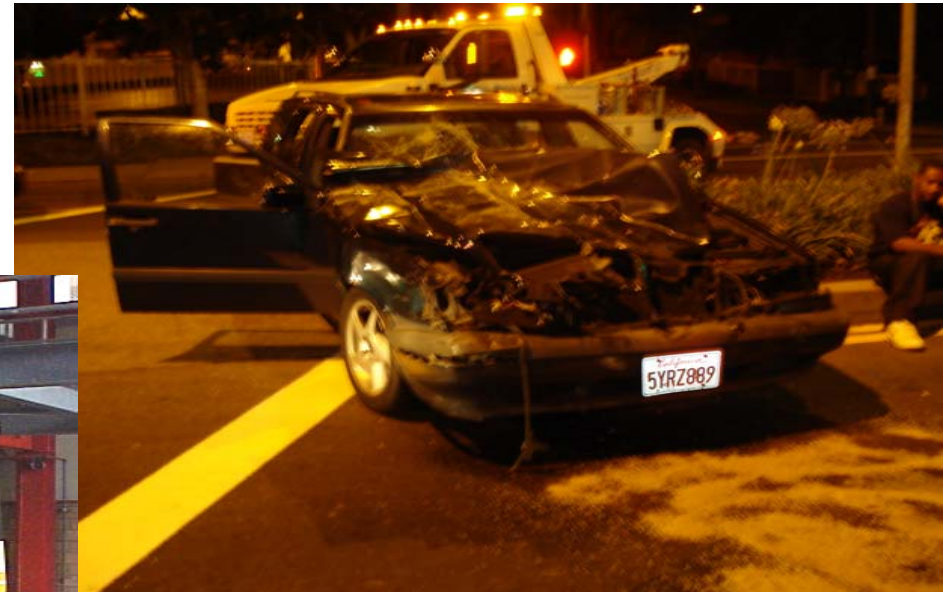
July 2008

	Aug-07	Sep-07	Oct-07	Nov-07	Dec-07	Jan-08	Feb-08	Mar-08	Apr-08	May-08	Jun-08	Jul-08	Totals
Blue Line	\$46,144	\$7,532	\$0	\$4,661	\$4,489	\$8,500	\$497	\$4,235	\$1,789	\$2,473	\$1,412	\$14,603	\$96,335
Red Line	\$0	\$0	\$0	\$203	\$0	\$0	\$0	\$274	\$0	\$0	\$418	\$0	\$895
Green Line	\$0	\$0	\$0	\$6,036	\$0	\$0	\$289	\$0	\$0	\$0	\$0	\$0	\$6,325
Gold Line	\$0	\$33,925	\$34,189	\$0	\$326	\$340	\$18,388	\$0	\$0	\$0	\$0	\$0	\$87,168
Totals	\$46,144	\$41,457	\$34,189	\$10,900	\$4,815	\$8,840	\$19,174	\$4,509	\$1,789	\$2,473	\$1,830	\$14,603	\$190,723

July 2008 Rail Vehicle Accident/Major Incident

Blue Line

- July 16, 2008 – 10-73 Train vs. Auto. Train 24 T-265 Cars 136b-116 northbound in Longbeach/27th Street – Auto ran red light. \$14,603



The monthly accident charges listed above represent only the expenses incurred in that particular month and are not a total repair of an individual accident.

Service Delivery – AM/PM Pull-Outs July 2008

Cars Available for AM/PM Pull-Outs

	Aug-07	Sep-07	Oct-07	Nov-07	Dec-07	Jan-08	Feb-08	Mar-08	Apr-08	May-08	Jun-08	Jul-08
Blue Line	100%	100%	100%	100%	99%	100%	100%	100%	100%	100%	100%	100%
Red Line	100%	100%	100%	100%	100%	100%	100%	100%	100%	100%	100%	100%
Green Line	100%	100%	100%	100%	100%	100%	100%	100%	100%	100%	100%	100%
Gold Line	100%	100%	100%	100%	100%	100%	100%	100%	100%	98%	100%	100%

AM/PM Pull-Out Requirements

Blue Line – Fleet Size 69 cars

- Weekday pull-out: 60 cars
- Weekend pull-out: 36 cars
- **Monthly Mileage: 423,637 miles**

Red Line - Fleet Size 104 cars

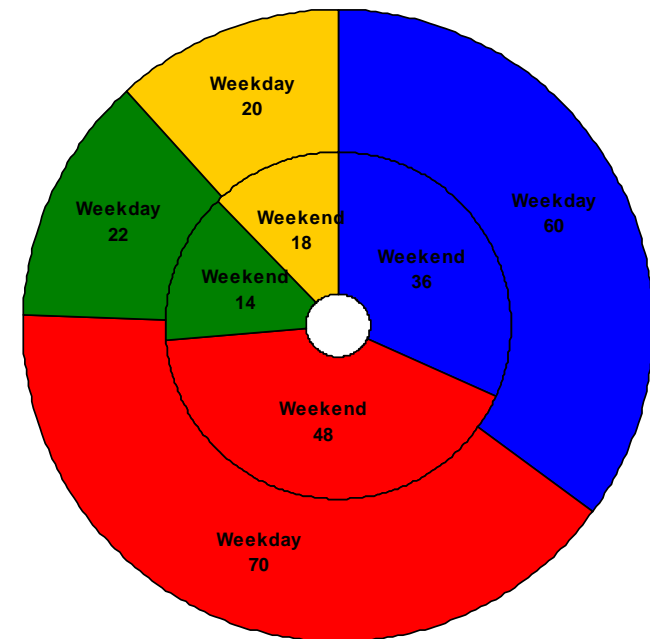
- Weekday pull-out: 70 cars
- Weekend pull-out: 48 cars
- **Monthly Mileage: 557,470 miles**

Green Line – Fleet Size 28 cars

- Weekday pull-out: 22 cars
- Weekend pull-out: 14 cars
- **Monthly Mileage: 214,850 miles**

Gold Line – Fleet Size 24 cars

- Weekday pull-out: 20 cars
- Weekend pull-out: 18 cars
- **Monthly Mileage: 155,343 miles**

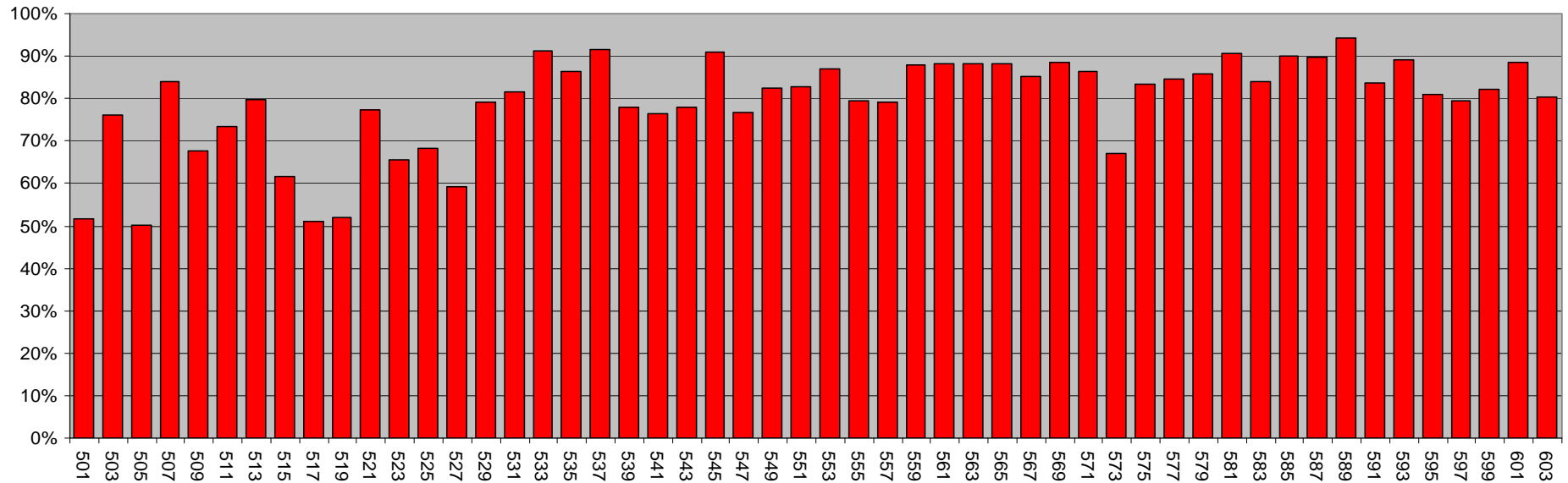


■ Blue Line ■ Red Line ■ Green Line ■ Gold Line

Reliability/Availability – FY08

Based off M3 Out-Of-Service “Status” for Running Repairs

FY08 Red Line Reliability (Breda 650 Base & Option HRVs)



**Red Line Married Pairs – Only Odd
Number Cars shown (1/2 of the Fleet).**

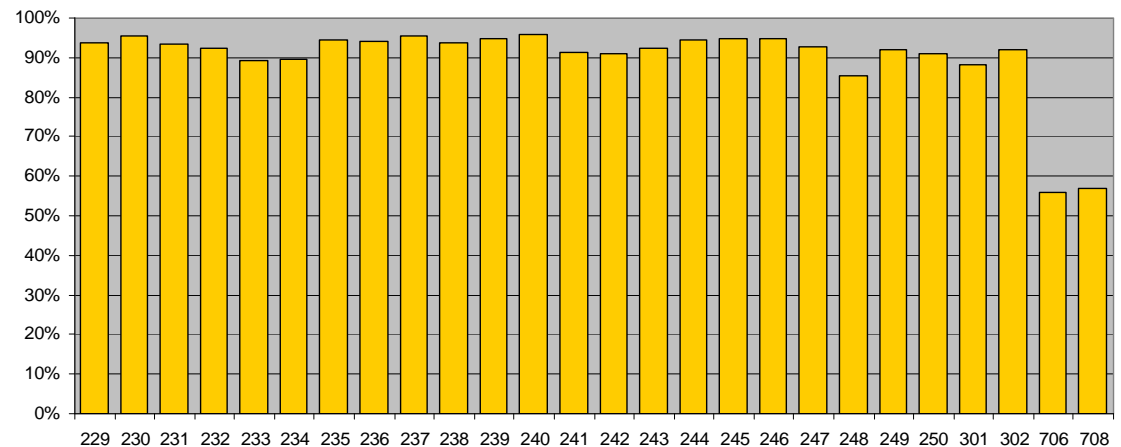
BaseBuy Reliability = 66%

Option Buy Reliability = 85%

Siemens 2000 Reliability = 93%

**Cars 706 & 708 are the new
AnsaldoBreda 2550 Light Rail
Vehicles that are undergoing Burn-In
and Factory Modifications.**

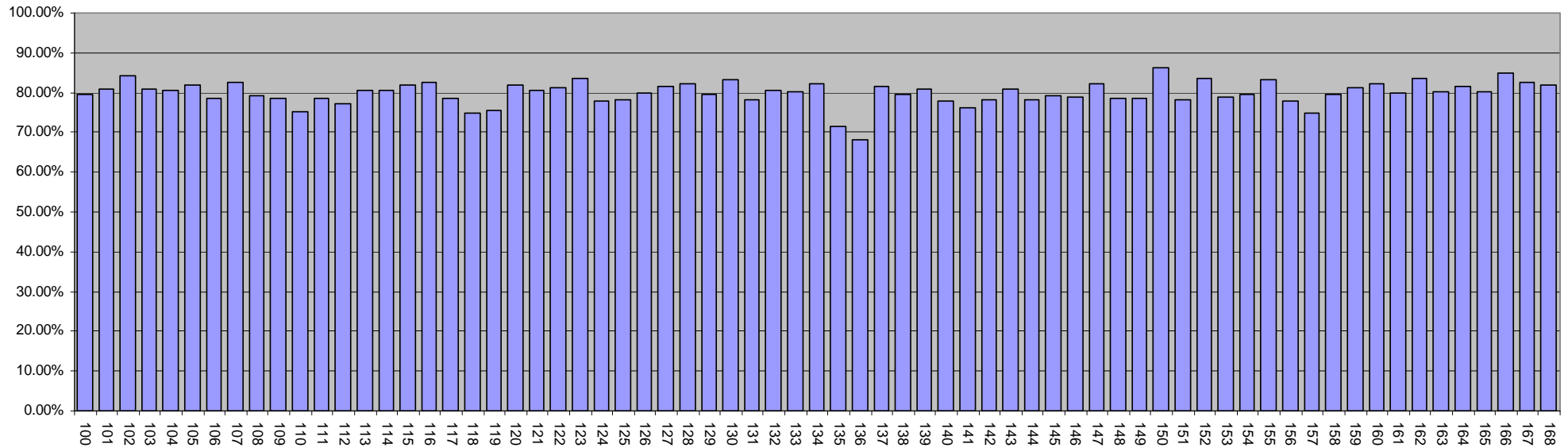
FY08 Gold Line Reliability (Siemens 2000 & AnsaldoBreda 2550)



Reliability/Availability – FY08

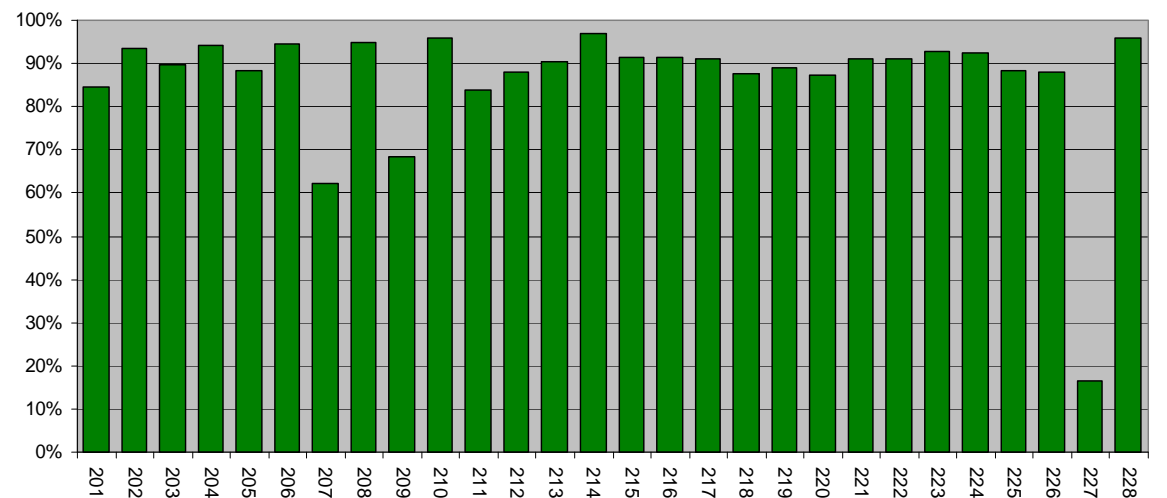
Based off M3 Out-Of-Service “Status” for Running Repairs

FY08 Blue Line Reliability (Nippon Sharyo 865/2020 LRVs)



Nippon Sharyo 865/2020 Reliability = 81%

FY08 Green Line Reliability (Siemens 2000)



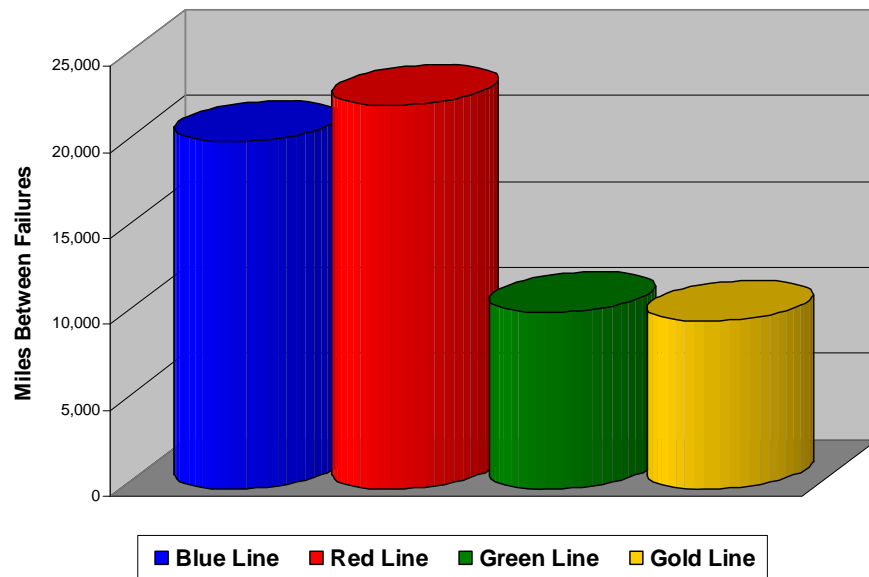
Siemens 2000 Reliability = 86%

Car 227 was Out-of-Service for conversion of it's Automatic Train Protection system from Gold Line to Green Line.

Mean Miles Between Failures (Major) July 2008

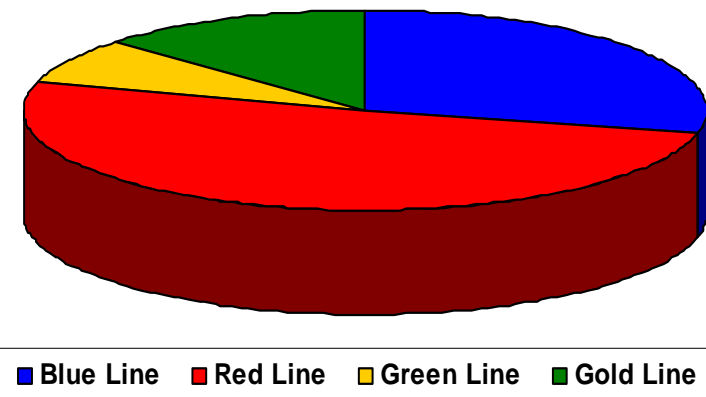
Major Failures

Blue Line: 20,173 miles (21 Major Failures)
Red Line: 22,299 miles (25 Major Failures)
Green Line: 10,231 miles (21 Major Failures)
Gold Line: 9,709 miles (16 Major Failures)



Repeat Failures

Blue Line: 24 Repeat Failures
Red Line: 43 Repeat Failures
Green Line: 6 Repeat Failures
Gold Line: 11 Repeat Failures



Major Failure: When a train does not complete its scheduled run or is more than 5 minutes late of its scheduled arrival time.

Repeater Car Details

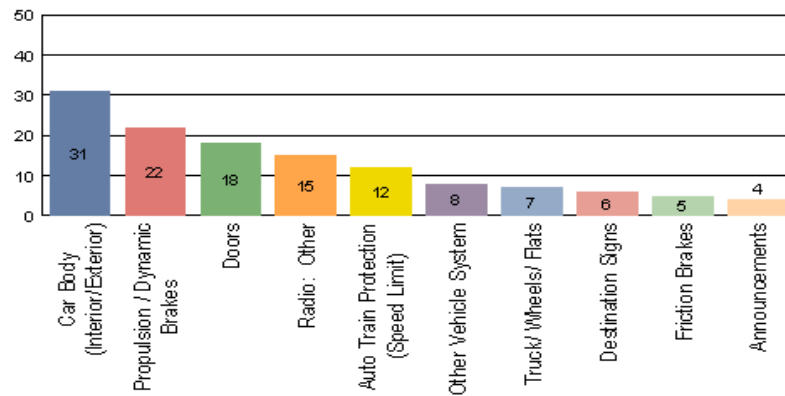
July 2008

System	Blue Line		Red Line		Green Line		Gold Line	
	Car #	No. of Repeats	Car #	No. of Repeats	Car #	No. of Repeats	Car #	No. of Repeats
Air Pressure - Low	127	1			217	1	248	1
Automatic Train Protection	122	2	537	2			234	1
	151	1					240	2
	125	1						
Car Body	114	1	572	1	220	1		
Destination Sign (TICU)	109	1	537	1				
			559	1				
			565	1				
			567	1				
			599	1				
Doors	134	1	553	1				
	113	1	589	1				
	147	2						
	153	2						
	158	1						
Emergency Brakes in ATO			549	1				
			546	1				
			550	2				
			592	1				
			549	1				
			591	2				
Friction Brakes			531	7			230	2
			547	2				
			548	1				
			560	1				
HVAC			559	3			302	1
			560	1				
			571	1				
			574	1				
			592	2				
Propulsion/Dynamic Brake	101	1	600	1	207	2	230	1
	133	1	517	2	212	1	235	2
	138	1	528	1	215	1		
	148	1	548	1				
	161	2	550	1				
Radio	130	1						
	132	1						
Trucks/Wheels/Flats	101	1					239	1
	162	1						
TOTALS	19	24	22	43	5	6	7	11

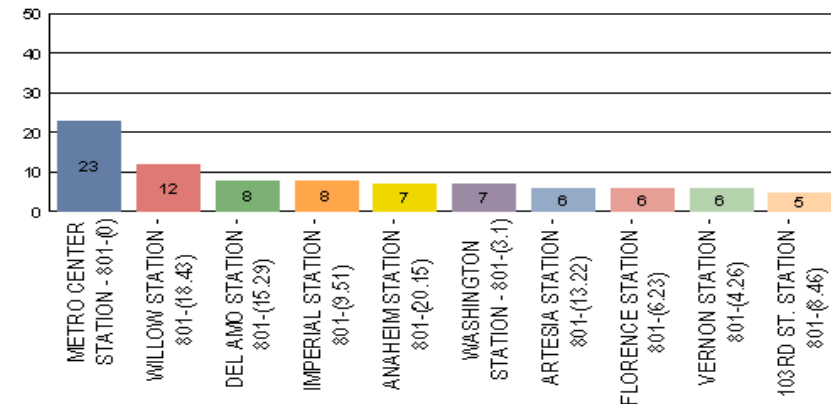
Incident Problems & Locations – Blue & Red Lines

Blue Line – July 2008

Count of the Top 10 Incident Problems

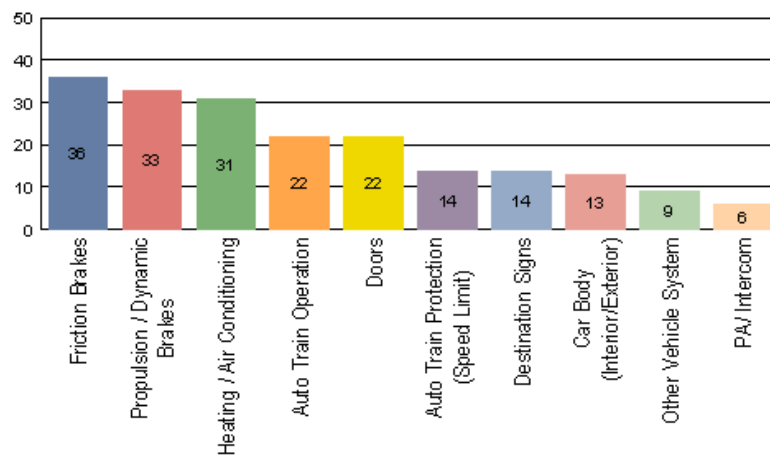


Count of the Top 10 Incident Locations

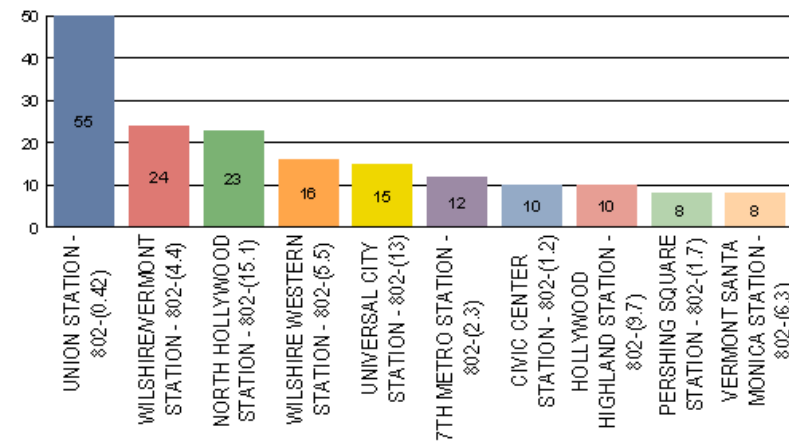


Red Line – July 2008

Count of the Top 10 Incident Problems



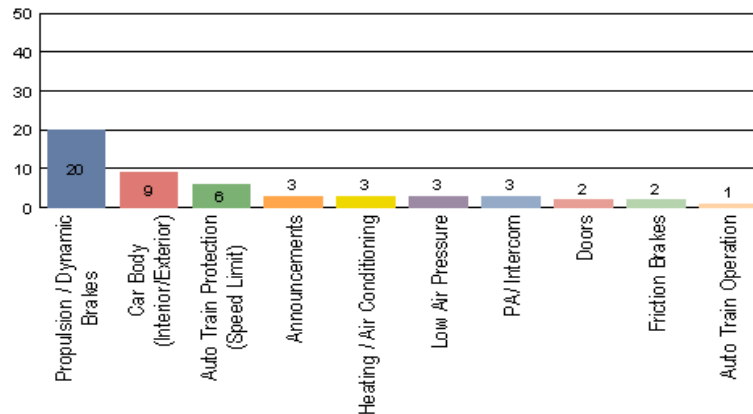
Count of the Top 10 Incident Locations



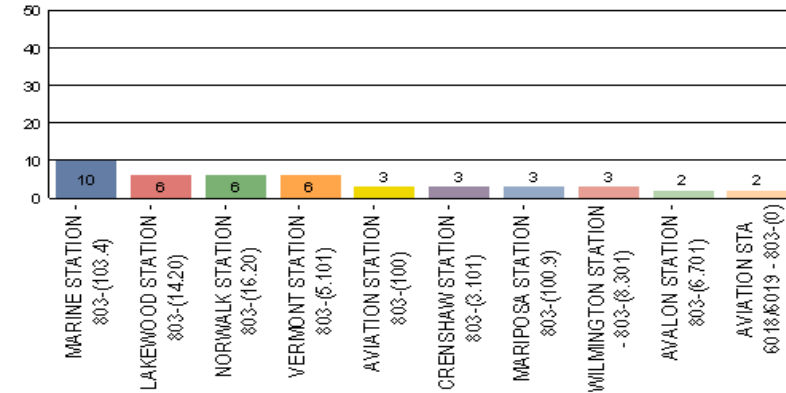
Incident Problems & Locations – Green & Gold Lines

Green Line - July 2008

Count of the Top 10 Incident Problems

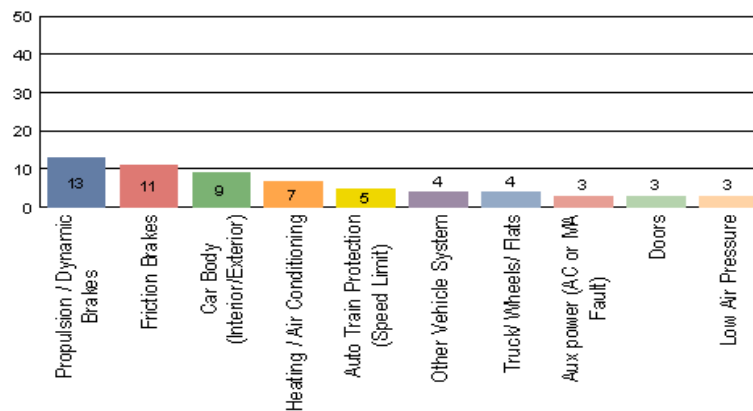


Count of the Top 10 Incident Locations

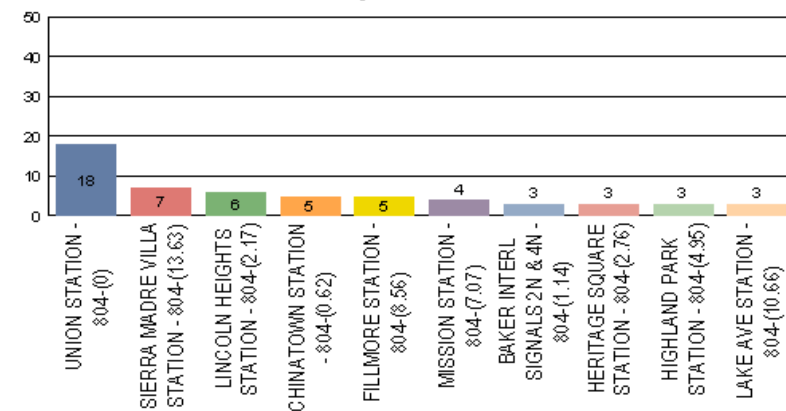


Gold Line - July 2008

Count of the Top 10 Incident Problems



Count of the Top 10 Incident Locations



Preventative Maintenance Compliance

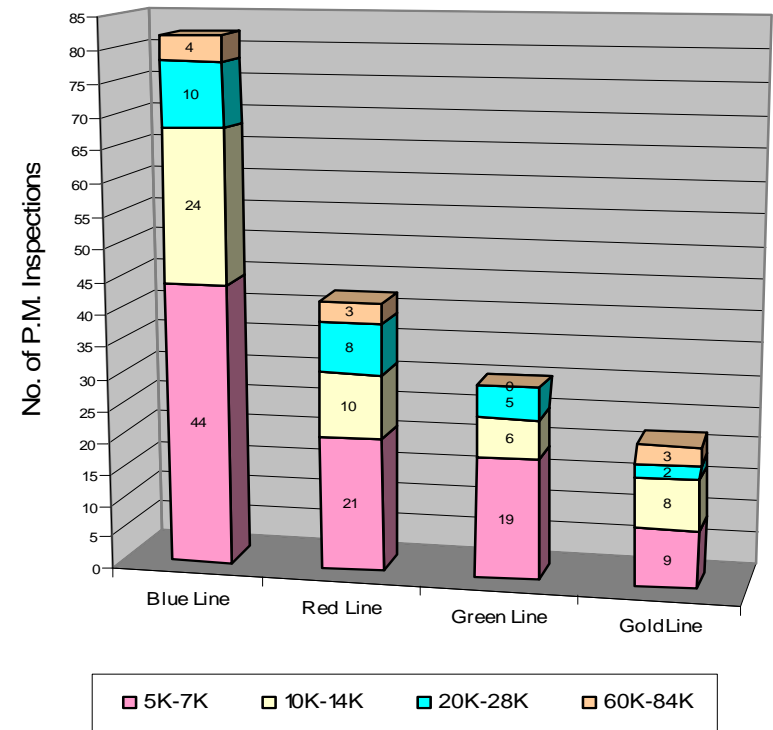
July 2008

	Aug-07	Sep-07	Oct-07	Nov-07	Dec-07	Jan-08	Feb-08	Mar-08	Apr-08	May-08	Jun-08	Jul-08
Blue Line	100%	100%	100%	100%	100%	100%	100%	100%	100%	100%	97%	100%
Red Line	100%	100%	100%	100%	99%	100%	100%	100%	100%	100%	80%	100%
Green Line	100%	100%	100%	100%	100%	95%	100%	100%	100%	100%	100%	100%
Gold Line	100%	100%	100%	100%	100%	100%	100%	100%	100%	100%	100%	100%

June 2008 Preventative Maintenance Inspections

No. of P.M. Inspections	5K	10K	20K	60K	Totals
Blue Line	44	24	10	4	82

No. of P.M. Inspections	7K	14K	28K	84K	Totals
Red Line	21	10	8	3	42
Green Line	19	6	5	0	30
Gold Line	9	8	2	3	22

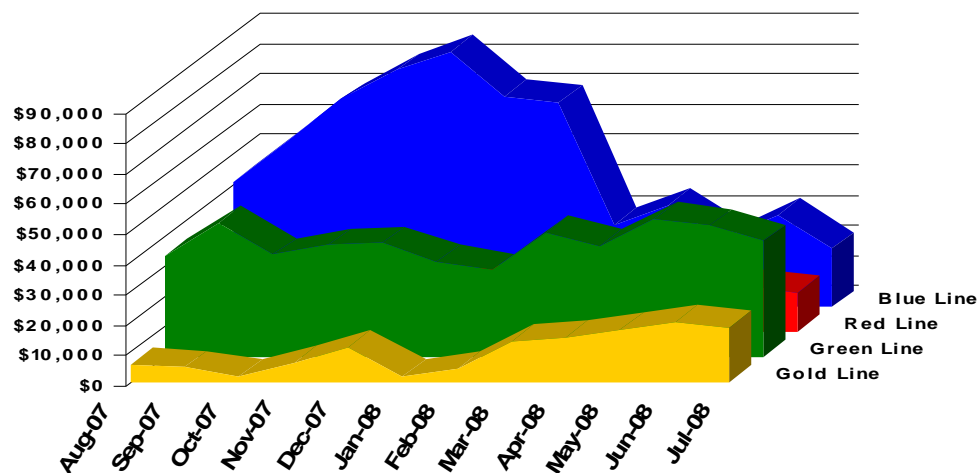


Vandalism & Graffiti Report

July 2008

	Aug-07	Sep-07	Oct-07	Nov-07	Dec-07	Jan-08	Feb-08	Mar-08	Apr-08	May-08	Jun-08	Jul-08	Year-to-Date
Blue Line	\$41,364	\$54,873	\$68,406	\$78,067	\$84,209	\$69,383	\$67,624	\$27,270	\$33,717	\$22,258	\$30,483	\$19,055	\$596,709
Red Line	\$11,906	\$11,645	\$9,355	\$15,156	\$13,231	\$16,100	\$17,874	\$18,388	\$17,477	\$15,881	\$15,127	\$13,153	\$175,293
Green Line	\$33,547	\$44,227	\$33,832	\$37,022	\$37,495	\$31,632	\$28,564	\$41,259	\$36,670	\$45,594	\$43,424	\$38,306	\$451,572
Gold Line	\$5,992	\$4,980	\$1,849	\$6,416	\$11,638	\$2,030	\$4,715	\$13,544	\$14,864	\$17,174	\$19,888	\$17,978	\$121,068
Totals	\$92,809	\$115,725	\$113,442	\$136,661	\$146,573	\$119,145	\$118,777	\$100,461	\$102,728	\$100,907	\$108,922	\$88,492	\$1,344,642

July 2008 Vandalism & Graffiti		
	Qty	Cost
Windows replaced	17	\$3,397
Vandal Shields	474	\$11,320
Seats Cleaned	6,816	\$ Labor
Seats Replaced	127	\$7,002
Ext/Int Repairs	35	\$11,186
Labor	883	\$55,587
Totals for July 2008	8,352	\$88,492



Vandalism & Graffiti Pictures

July, 2008

Blue Line



Green Line

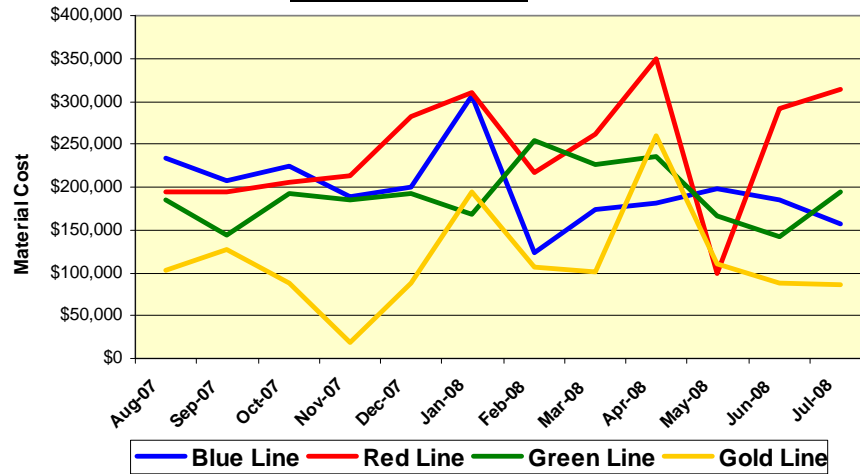


Material and Labor Costs

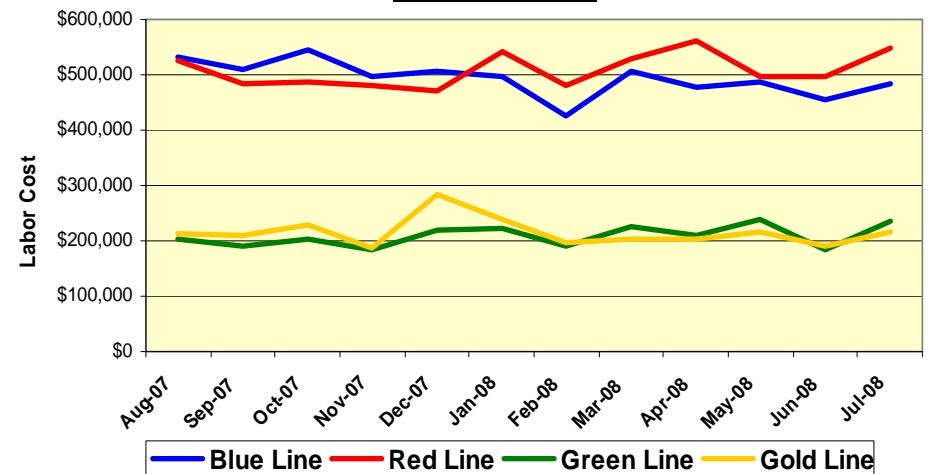
July 2008

Material Costs	Aug-07	Sep-07	Oct-07	Nov-07	Dec-07	Jan-08	Feb-08	Mar-08	Apr-08	May-08	Jun-08	Jul-08
Blue Line	\$209K	\$176K	\$224K	\$189K	\$200K	\$307K	\$123K	\$174K	\$181K	\$197K	\$185K	\$157K
Red Line	\$147K	\$209K	\$205K	\$212K	\$283K	\$311K	\$217K	\$261K	\$349K	\$ 99K	\$292K	\$314K
Green Line	\$181K	\$139K	\$193K	\$185K	\$132K	\$169K	\$254K	\$225K	\$235K	\$166K	\$142K	\$194K
Gold Line	\$100K	\$119K	\$88K	\$19K	\$154K	\$195K	\$107K	\$101K	\$260K	\$110K	\$88K	\$85K
Totals	\$638K	\$643K	\$710K	\$559K	\$768K	\$982K	\$701K	\$761K	\$1,052K	\$572K	\$707K	\$750K

Material Costs



Labor Costs

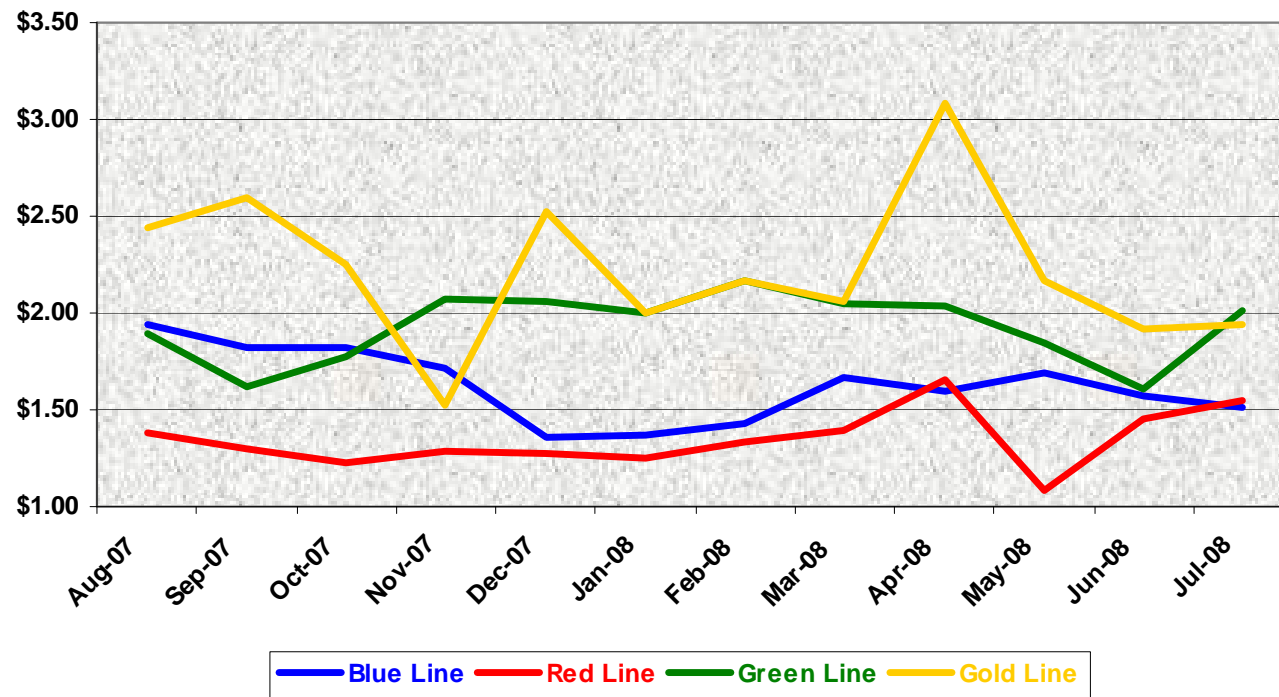


Labor Costs	Aug-07	Sep-07	Oct-07	Nov-07	Dec-07	Jan-08	Feb-08	Mar-08	Apr-08	May-08	Jun-08	Jul-08
Blue Line	\$532K	\$508K	\$545K	\$496K	\$508K	\$498K	\$426K	\$505K	\$479K	\$487K	\$454K	\$483K
Red Line	\$527K	\$485K	\$489K	\$479K	\$471K	\$542K	\$481K	\$530K	\$563K	\$498K	\$496K	\$549K
Green Line	\$204K	\$190K	\$204K	\$185K	\$220K	\$223K	\$190K	\$225K	\$211K	\$239K	\$184K	\$237K
Gold Line	\$214K	\$208K	\$229K	\$186K	\$235K	\$240K	\$196K	\$222K	\$202K	\$216K	\$192K	\$217K
Totals	\$1,477K	\$1,392K	\$1,466K	\$1,346K	\$1,484K	\$1,503K	\$1,293K	\$1,482K	\$1,454K	\$1,440K	\$1,326K	\$1,486K

Cost Per Mile

July 2008

Cost per mile:	Aug-07	Sep-07	Oct-07	Nov-07	Dec-07	Jan-08	Feb-08	Mar-08	Apr-08	May-08	Jun-08	Jul-08	Average
Blue Line	\$1.94	\$1.82	\$1.82	\$1.72	\$2.00	\$1.78	\$1.43	\$1.67	\$1.60	\$1.69	\$1.58	\$1.51	\$1.62
Red Line	\$1.38	\$1.30	\$1.23	\$1.28	\$1.56	\$1.52	\$1.33	\$1.39	\$1.65	\$1.08	\$1.45	\$1.55	\$1.35
Green Line	\$1.89	\$1.62	\$1.77	\$1.53	\$1.82	\$1.76	\$2.17	\$2.05	\$2.04	\$1.84	\$1.61	\$2.01	\$1.93
Gold Line	\$2.45	\$2.60	\$2.25	\$1.52	\$2.84	\$2.86	\$2.16	\$2.75	\$3.09	\$2.17	\$1.91	\$1.94	\$2.22



Capital Projects

July 2008

Division Number/ Location	Project Number/Name	Description	LOP Budget	Amount Spent	Amount Remaining	Scheduled Completion Date	New Projected Completion Date	Comments/Reason
Division 11 Blue Line	204009 - Improvements	Main Shop & Car Wash Extension	\$ 17,385,500	\$16,870,719	\$514,781	1/31/2008 Original SOW complete	Open for add-on work	Traction Power engineering completed & delivered design of catwalk gate alarms to B. Rydell 6/18/08. Once a prototype is made & tested, Traction Power
Division 21 Gold Line	20417 - Improvements	Historic Aqueduct	\$ 4,500,000	\$3,674,859	\$825,141	05/23/08	09/30/08	Awaiting National Historic Registry response. Wilbur Babb is coordinating. Should close out about 9/15/08. No change
Division 22 Green Line	204037 - Improvements Ph 2	Wheel True Pit & Machine. Crossover Train Control	\$ 4,895,000	\$3,528,381	\$1,366,619	01/07/09	01/07/09	WTM Pit has gone to closeout. Final invoice & retention has been paid. Crossover Train Control also in closeout. WTM has been tested & conditionally accepted. Once parts inventory is complete, will begin closeout.
Division 20 Red Line	20407 - Car Wash & Cleaning Platform	Car Wash & Cleaning Platform	\$ 15,400,000	\$700,001	\$14,669,999	03/03/09	05/17/10	This CP has been acquired by Girish Roy & MTA Construction.
Division 21 Gold Line	204503 - Improvements Phase 2	Body Shop	\$ 5,000,000	\$648,673	\$4,351,327	02/10/11	02/10/11	This CP has been acquired by Girish Roy & MTA Construction.
Division 20 Red Line	204054 - Additional Hoists	Additional two double-pair vehicle hoists	\$ 4,250,000	\$2,442,607	\$1,807,393	06/30/08	05/12/09	Contractor is excavating 2 pits. Will complete excavation/restoration NLT 8/22/08.
Division 22 Green Line	204059 - Spray Paint Booth	Small Spray Paint Booth	\$ 350,000	\$126,828	\$223,172	05/16/08	10/08/09	Readiness Review was held on 7/16/08. Currently out for bids for 60 days.

Rail Fleet Services Instruction

July 2008

Description	Status	Start	End	Course Hours	Student Count	Training Hours
Blue Line Training (Nippon Sharyo P865/P2020 LRV):						
P-CARD TRAINING FOR CARD HOLDERS AND AOS	Complete	7/22/2008	7/22/2008	2	1	2
ETD COMMUNICATING ONE-ON-ONE	Complete	7/31/2008	7/31/2008	3	1	3
ANGER MANAGEMENT	Complete	7/24/2008	7/24/2008	3	1	3
MOP SEXUAL HARASSMENT PREVENTION AND TITLE VII	Complete	7/17/2008	7/17/2008	2	1	2
Total Blue Line Training (Hours):						10
Red Line Training (Breda A650 HRV):						
TRANSITSAFE - RAIL TRANSP & MAINT SUPV	Complete	7/24/2008	7/24/2008	2	1	2
MANAGERIAL AND SUPERVISORY TRAINING	Complete	7/16/2008	7/17/2008	12	1	12
MOP SEXUAL HARASSMENT PREVENTION AND TITLE VII	Complete	7/22/2008	7/22/2008	2	1	2
ETD PC 101 ESSENTIAL CONCEPTS	Complete	7/10/2008	7/10/2008	3	1	3
Total Red Line Training (Hours):						19
Green Line Training (Siemens P2000 LRVs):						
RFS SIMMONS WHEEL TRUE MACHINE	Complete	7/7/2008	7/11/2008	40	3	120
RFS SIEMENS 2000 VEHICLE SYSTEMS	Complete	7/14/2008	7/25/2008	80	4	320
RFS SIMMONS WHEEL TRUE MACHINE	Complete	7/1/2008	7/3/2008	24	1	24
MANAGERIAL AND SUPERVISORY TRAINING	Complete	7/17/2008	7/17/2008	12	2	24
Total Green Line Training (Hours):						488
Gold Line Training (P2550 & P2000 LRVs):						
RFS ANSALDOBREDA 2550 COMMUNICATIONS	Complete	7/30/2008	8/1/2008	16	10	160
TRANSITSAFE - RAIL TRANSP & MAINT SUPV	Complete	7/24/2008	7/24/2008	2	2	4
RAIL RECERTIFICATION	Complete	7/16/2008	7/16/2008	8	4	32
CLASSROOM INSTRUCTION	Complete	7/14/2008	7/14/2008	8	1	8
P-2550 VEHICLE TRAINING	Complete	7/14/2008	7/14/2008	8	1	8
Total Gold Line Training (Hours):						212
Total Rail Fleet Services Instruction for the month of July 2008 (Hours):						729.0

Other Projects being worked on by Instructors:

Review AnsaldoBreda 2550 Maintenance Manuals - Doug Witke

Acceptance of Green Line Wheel True Machine - Frank Pirillo

Red Line Automated Announcements - Russell Homan

Core Vehicle Training Completed:	BLUE	RED	GREEN	GOLD
Percentage of core vehicle training complete:	99.2%	97.6%	84.7%	62.3%
AnsaldoBreda 2550 Training Completed:	3.0%	N/A	1.6%	15.1%
Average Specialist Rail Experience Level in Years:	9.6	8.0	6.9	6.7

