



Rail Fleet Services Monthly Report March, 2008



Metro

Table of Contents

• Safety	
– Industrial Injuries	Page 1
– Rail Vehicle Accidents & Major Incidents	Page 2
• Customer Service	
– Service Delivery – AM/PM Pull-Outs	Page 3
– Mean Miles Between Failures (Major)	Page 4
– Repeater Car Details	Page 5
• Business Processes	
– Incident Problems & Locations Blue & Red Lines	Page 6
– Red Line Automatic Train Operation (ATO) Failures	Page 7
– Incident Problems & Locations Green & Gold Lines	Page 8
– Preventative Maintenance Compliance	Page 9
• Finance	
– Vandalism & Graffiti Costs	Page 10
– Material & Labor Costs	Page 11
– Cost per mile	Page 12
– Capital Projects	Page 13
• Growth	
– Rail Fleet Service Training	Page 14

Industrial Injuries – Lost Work Hours

	Apr-07	May-07	Jun-07	Jul-07	Aug-07	Sep-07	Oct-07	Nov-07	Dec-07	Jan-08	Feb-08	Mar-08	Year to Date
Blue Line	120	21	0	0	72	48	168	168	133	24	0	80	754
Red Line	336	304	200	264	272	168	184	96	0	0	208	96	2,032
Green Line	0	0	0	0	0	0	2	0	0	160	24	0	186
Gold Line	264	288	392	264	368	328	80	160	176	72	0	0	2,392
Totals	720	613	592	528	712	544	434	424	309	256	232	176	5,364

March 2008 Lost Work Hours

Blue Line – 112 Assigned Employees (107 Active)

- Service Attendant – 80 hours

Red Line – 110 Assigned Employees (102 Active)

- Service Attendants – 96 hours

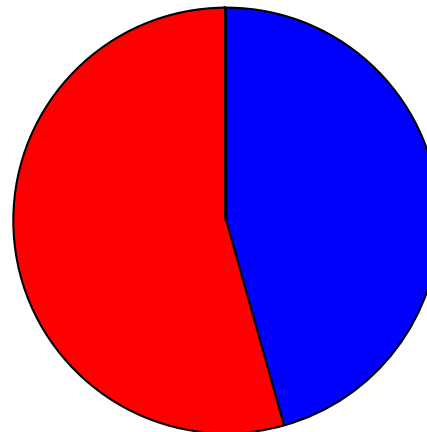
Green Line – 47 Assigned Employees (45 Active)

Gold Line – 46 Assigned Employees (45 Active)

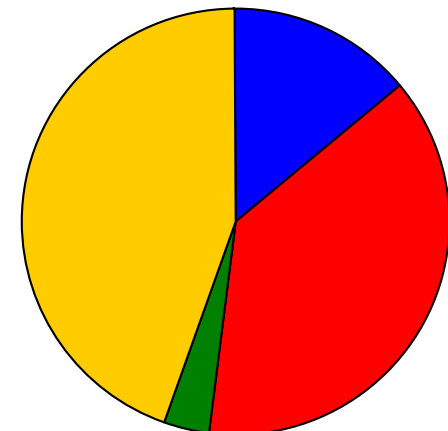
Total Lost Work Hours for March 2008 – 176 hours

Total Lost Work Hours for 12-Months - 5,364 Hours

March 2008 Lost Work Hours



Year-to-Date



■ Blue Line
 ■ Red Line
 ■ Green Line
 ■ Gold Line

Rail Vehicle Accidents & Major Incidents

	Apr-07	May-07	Jun-07	Jul-07	Aug-07	Sep-07	Oct-07	Nov-07	Dec-07	Jan-08	Feb-08	Mar-08
Blue Line	\$6,869	\$57	\$9,551	\$4,652	\$46,144	\$7,532	\$0	\$4,661	\$4,489	\$8,500	\$497	\$4,235
Red Line	\$0	\$0	\$0	\$0	\$0	\$0	\$0	\$203	\$0	\$0	\$0	\$274
Green Line	\$0	\$0	\$0	\$0	\$0	\$0	\$0	\$6,036	\$0	\$0	\$289	\$0
Gold Line	\$0	\$0	\$0	\$0	\$0	\$33,925	\$34,189	\$0	\$326	\$340	\$18,388	\$0
Totals	\$6,869	\$57	\$9,551	\$4,652	\$46,144	\$41,457	\$34,189	\$10,900	\$4,815	\$8,840	\$19,174	\$4,509

March 2008 Rail Vehicle Accidents & Major Incidents

Blue Line

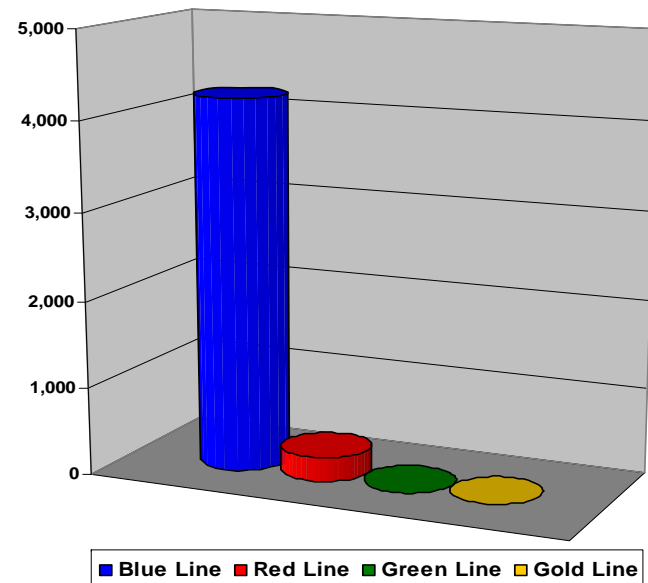
- March 8, Train vs. Ped at GradeX at Alondra Blvd., Train 5 T-161 (\$126)
- March 16, Train vs. Other at southbound Long Beach & 14th, Train strikes bicycke Train 3 T-285 (\$392)
- March 30, Train vs. Auto at Flower & Cameron, Train 10 T-157 involved with Volvo that turned in front of train (\$3,717)

Red Line

- March 17, Train vs. Pedestrian at Vermont/Beverly AL, Train 34, T-271, 10-72 (\$274)

The monthly accident charges listed above represent only the expenses incurred in that particular month and are not a total repair of an individual accident.

March, 2008 Damage Costs



Service Delivery – AM/PM Pull-Outs

Cars Available for AM/PM Pull-Outs

	Apr-07	May-07	Jun-07	Jul-07	Aug-07	Sep-07	Oct-07	Nov-07	Dec-07	Jan-08	Feb-08	Mar-08
Blue Line	100%	100%	100%	100%	100%	100%	100%	100%	99%	100%	100%	100%
Red Line	100%	100%	100%	100%	100%	100%	100%	100%	100%	100%	100%	100%
Green Line	100%	100%	100%	100%	100%	100%	100%	100%	100%	100%	100%	100%
Gold Line	100%	100%	100%	100%	100%	100%	100%	100%	100%	100%	100%	100%

AM/PM Pull-Out Requirements

Blue Line – Fleet Size 69 cars

- Weekday pull-out: 60 cars
- Weekend pull-out: 36 cars
- **Monthly Mileage: 407,484 miles**

Red Line - Fleet Size 104 cars

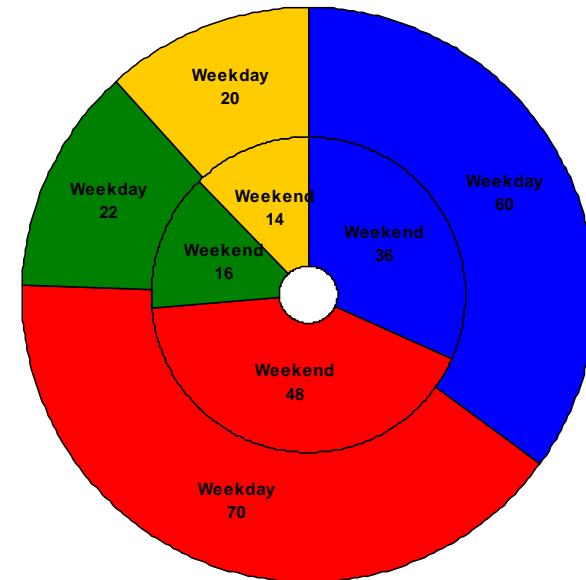
- Weekday pull-out: 70 cars
- Weekend pull-out: 48 cars
- **Monthly Mileage: 569,802 miles**

Green Line – Fleet Size 28 cars

- Weekday pull-out: 22 cars
- Weekend pull-out: 16 cars
- **Monthly Mileage: 219,318 miles**

Gold Line – Fleet Size 24 cars

- Weekday pull-out: 20 cars
- Weekend pull-out: 14 cars
- **Monthly Mileage: 117,042 miles**



■ Blue Line ■ Red Line ■ Green Line ■ Gold Line

Mean Miles Between Failures (Major)

March 2008

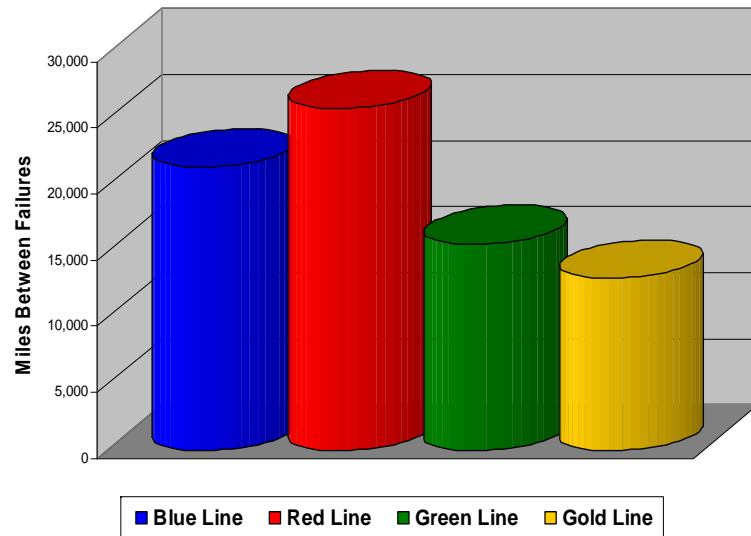
FTA Major Failures

Blue Line: 21,446 miles (19 FTA Major Failures)

Red Line: 25,900 miles (22 FTA Major Failures)

Green Line: 15,666 miles (14 FTA Major Failures)

Gold Line: 13,042 miles (9 FTA Major Failures)



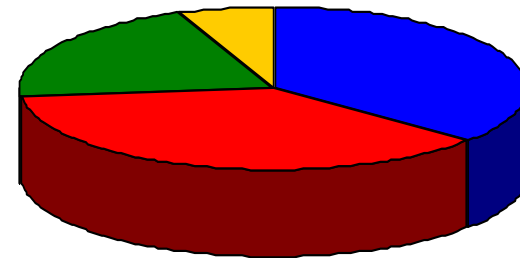
Repeat Failures

Blue Line: 30 Repeat Failures

Red Line: 31 Repeat Failures

Green Line: 17 Repeat Failures

Gold Line: 5 Repeat Failures



■ Blue Line ■ Red Line ■ Green Line ■ Gold Line

Repeater Car Details

March, 2008

	BLUE LINE		RED LINE		GREEN LINE		GOLD LINE	
System	Car #	No. of Repeats	Car #	No. of Repeats	Car #	No. of Repeats	Car #	No. of Repeats
Automatic Train Operation/Protection	101	1	536	1	225	1		
	106	1	537	1	216	2		
	124	3	573	1				
	146	1	529	1				
	151	3	570	1				
Car Body	116	1						
Destination Sign (TICU)			549	1				
Doors	114	2	528	3	209	1	232	1
	118	1						
	122	6						
	135	1						
Friction Brakes			523	1			249	2
			536	1				
			571	1				
			573	1				
			574	1				
			584	2				
			597	3				
HVAC			584	1	222	3		
Propulsion	111	1	519	1	205	2	247	1
	124	1	526	1	209	1	708	1
	137	2	529	1	224	2		
	138	4	558	1	227	1		
			576	1	228	1		
			586	1				
			603	1				
			604	2				
PA Intercom/Radio	105	2			212 206	1 2		
Truck/Wheels/Flats			541 583	1 1				
TOTALS	14	30	21	31	10	17	4	5

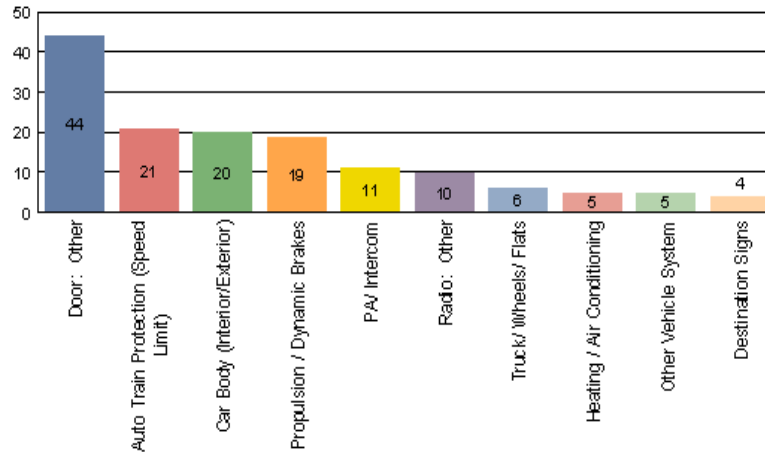


Metro

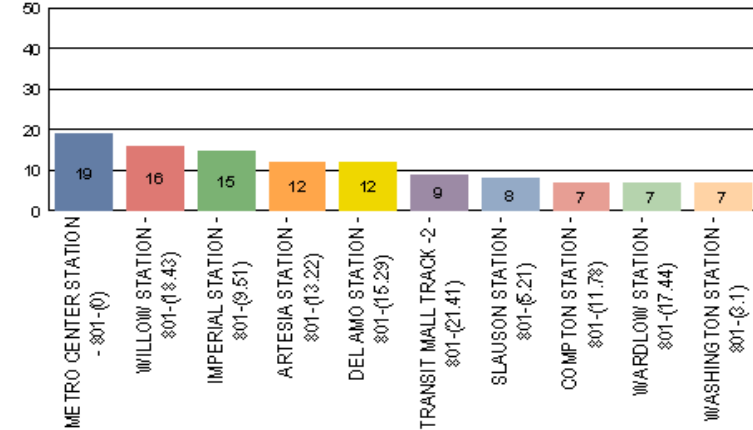
Incident Problems & Locations – Blue & Red Lines

Blue Line – March 2008

Count of the Top 10 Incident Problems

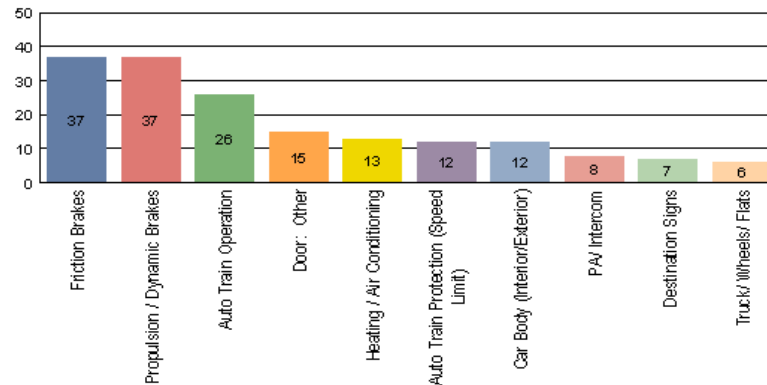


Count of the Top 10 Incident Locations

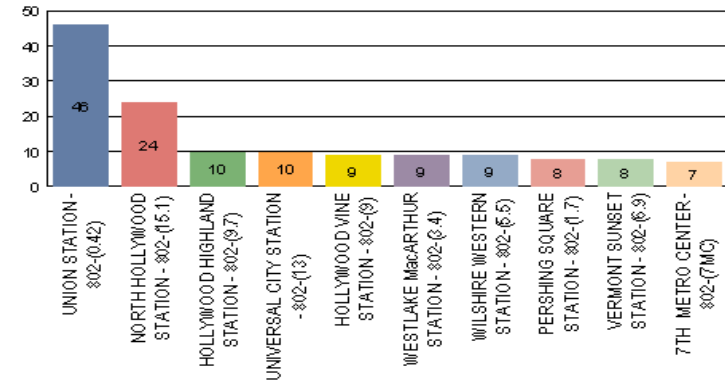


Red Line – March 2008

Count of the Top 10 Incident Problems



Count of the Top 10 Incident Locations



Red Line Automatic Train Operation (ATO) Failures

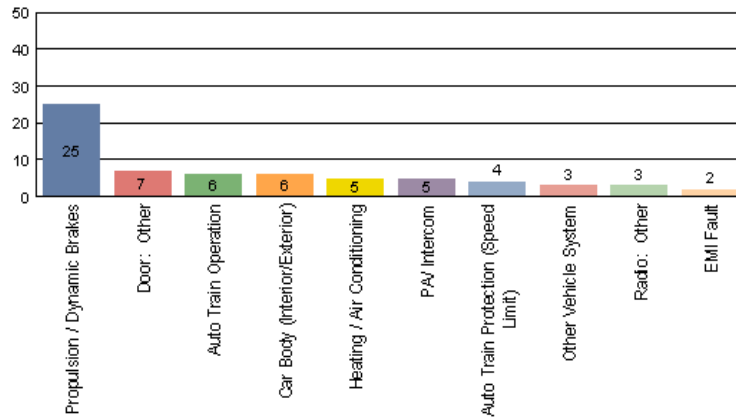
March 23 (Start of ATO operation) through March 31, 2008

- **No FTA Major Failures** (Train did not make it to the end of the line).
- **18 Minor ATO Failures** of which **2** are incorrectly coded as ATO Failures. Both were Propulsion Failures but were coded as ATO because the train was operating in ATO.
- **11 of the 18 reported ATO Failures were Emergency Brake Applications** while operating in ATO. The Emergency Brake application is mostly due to the brake assurance rate 1.6mphs in 3 seconds was not met.
- **3 Incidents of ATO Overshooting the platform.** (Carborne and Wayside problems corrected).
- **1 Incident of Stopping Short of the platform.** (Wayside problem corrected).
- **Most of the Emergency Brake applications happened between Mile Posts 10.5 to 13.6** because of a speed command reduction from 70 to 55 mph. (These vehicle related problems are being corrected).

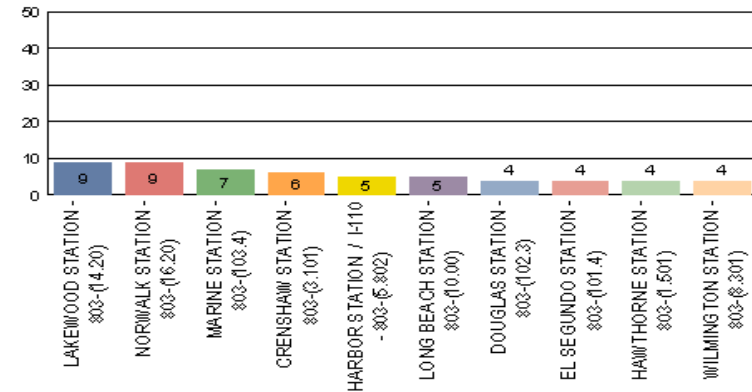
Incident Problems & Locations – Green & Gold Lines

Green Line - March 2008

Count of the Top 10 Incident Problems

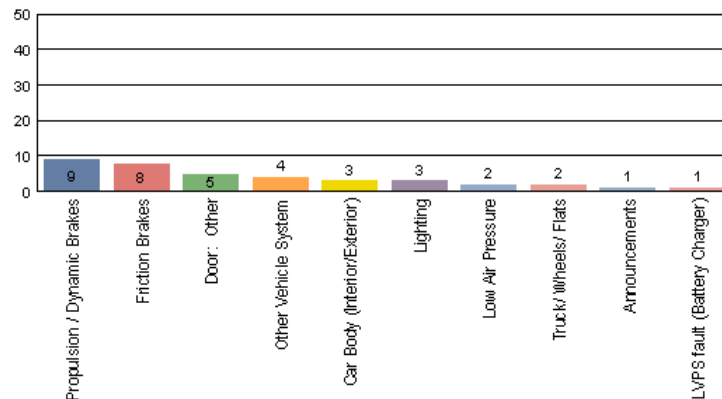


Count of the Top 10 Incident Locations

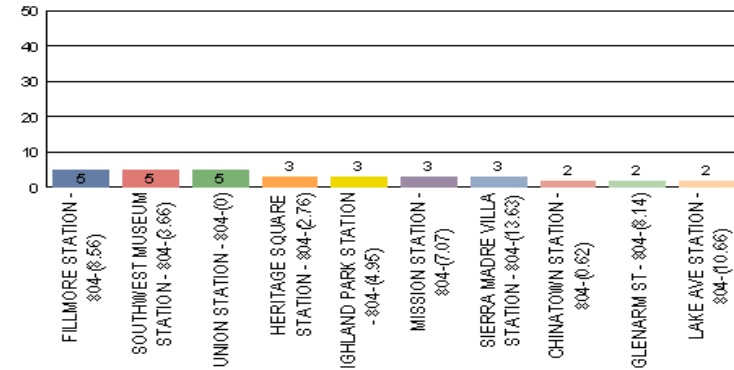


Gold Line - March 2008

Count of the Top 10 Incident Problems



Count of the Top 10 Incident Locations



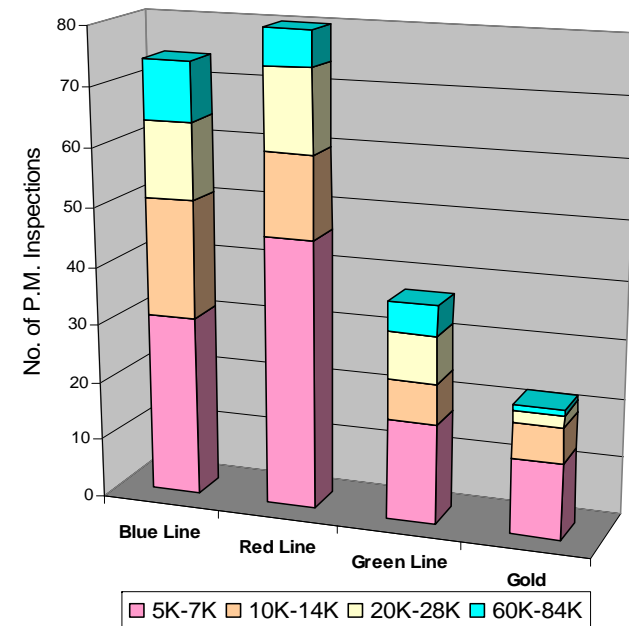
Preventative Maintenance Compliance

	Apr-07	May-07	Jun-07	Jul-07	Aug-07	Sep-07	Oct-07	Nov-07	Dec-07	Jan-08	Feb-08	Mar-08
Blue Line	100%	100%	100%	100%	100%	100%	100%	100%	100%	100%	100%	100%
Red Line	97%	100%	100%	100%	100%	100%	100%	100%	99%	100%	100%	100%
Green Line	100%	100%	100%	100%	100%	100%	100%	100%	100%	95%	100%	100%
Gold Line	100%	100%	100%	100%	100%	100%	100%	100%	100%	100%	100%	100%

March 2008 Preventative Maintenance Inspections

No. of P.M. Inspections	5K	10K	20K	60K	Totals
Blue Line	31	20	13	10	74

No. of P.M. Inspections	7K	14K	28K	84K	Totals
Red Line	46	14	14	6	80
Green Line	17	7	8	5	37
Gold Line	13	6	2	1	22



Vandalism & Graffiti Report

	Apr-07	May-07	Jun-07	Jul-07	Aug-07	Sep-07	Oct-07	Nov-07	Dec-07	Jan-08	Feb-08	Mar-08	Year To Date
Blue Line	\$36,165	\$22,571	\$33,340	\$41,364	\$41,364	\$54,873	\$68,406	\$78,067	\$84,209	\$69,383	\$67,624	\$27,270	\$625K
Red Line	\$12,098	\$17,357	\$21,464	\$11,906	\$11,906	\$11,645	\$9,355	\$15,156	\$13,231	\$16,100	\$17,874	\$18,388	\$176K
Green Line	\$29,903	\$25,863	\$28,478	\$32,716	\$33,547	\$44,227	\$33,832	\$37,022	\$37,495	\$31,632	\$28,564	\$41,259	\$405K
Gold Line	\$4,094	\$9,778	\$4,347	\$4,840	\$5,992	\$4,980	\$4,980	\$6,416	\$11,638	\$2,030	\$4,715	\$13,544	\$74K
Totals	\$82,260	\$75,569	\$87,629	\$90,826	\$92,809	\$115,725	\$113,442	\$136,661	\$146,573	\$119,145	\$118,777	\$100,461	\$1.3M

March 2008 Vandalism & Graffiti

Windows replaced: 82 @ \$10,324

Vandal Shields replaced: 815 @ \$17,765

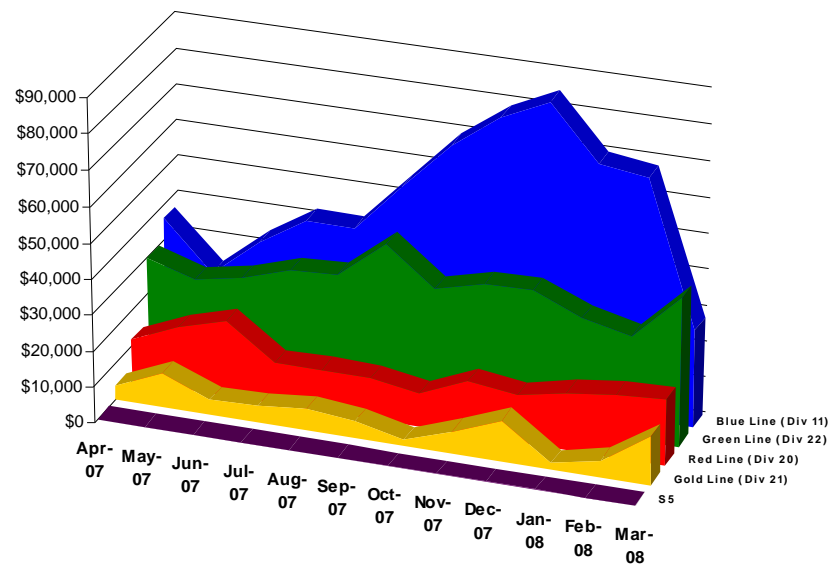
Seats cleaned: 5,541

Seats replaced: 60 @ \$3,465

Ext./Int. repairs: \$4,350

Labor = \$64,557

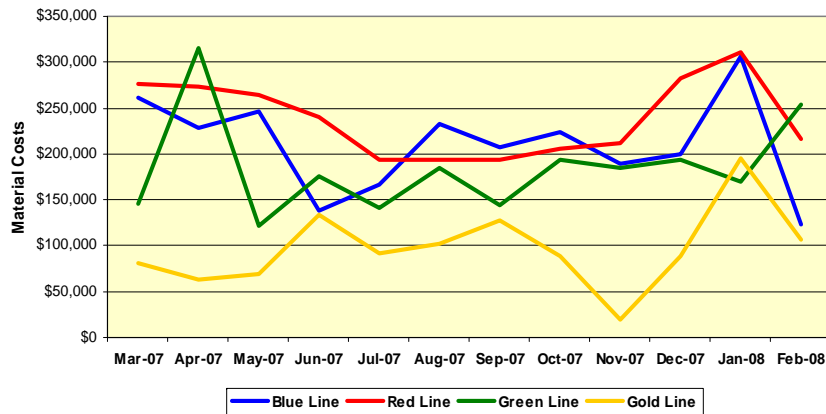
Total for March 2008: \$100,461



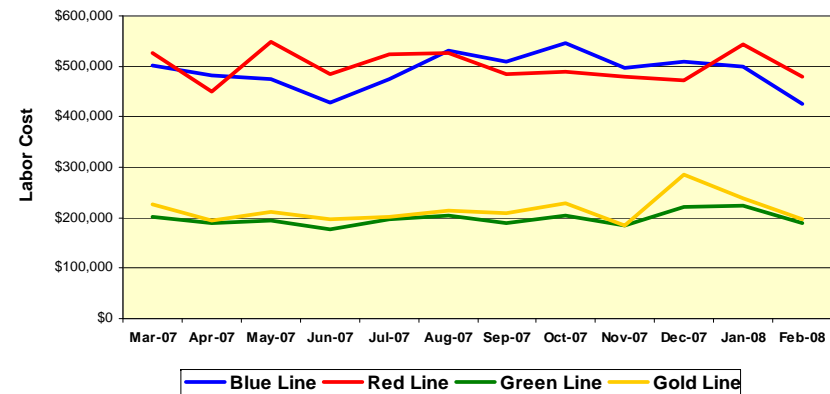
Material and Labor Costs

Material Costs	Apr-07	May-07	Jun-07	Jul-07	Aug-07	Sep-07	Oct-07	Nov-07	Dec-07	Jan-08	Feb-08	Mar-08
Blue Line	\$216K	\$236K	\$109K	\$177K	\$209K	\$176K	\$224K	\$189K	\$200K	\$307K	\$123K	\$174K
Red Line	\$252K	\$595K	\$227K	\$180K	\$147K	\$209K	\$205K	\$212K	\$283K	\$311K	\$217K	\$261K
Green Line	\$308K	\$117K	\$164K	\$143K	\$181K	\$139K	\$193K	\$185K	\$132K	\$169K	\$254K	\$225K
Gold Line	\$58K	\$65K	\$121K	\$91K	\$100K	\$119K	\$88K	\$19K	\$154K	\$195K	\$107K	\$101K
Totals	\$835K	\$1,015K	\$620K	\$591K	\$638K	\$643K	\$710K	\$559K	\$768K	\$982K	\$701K	\$761K

Material Costs



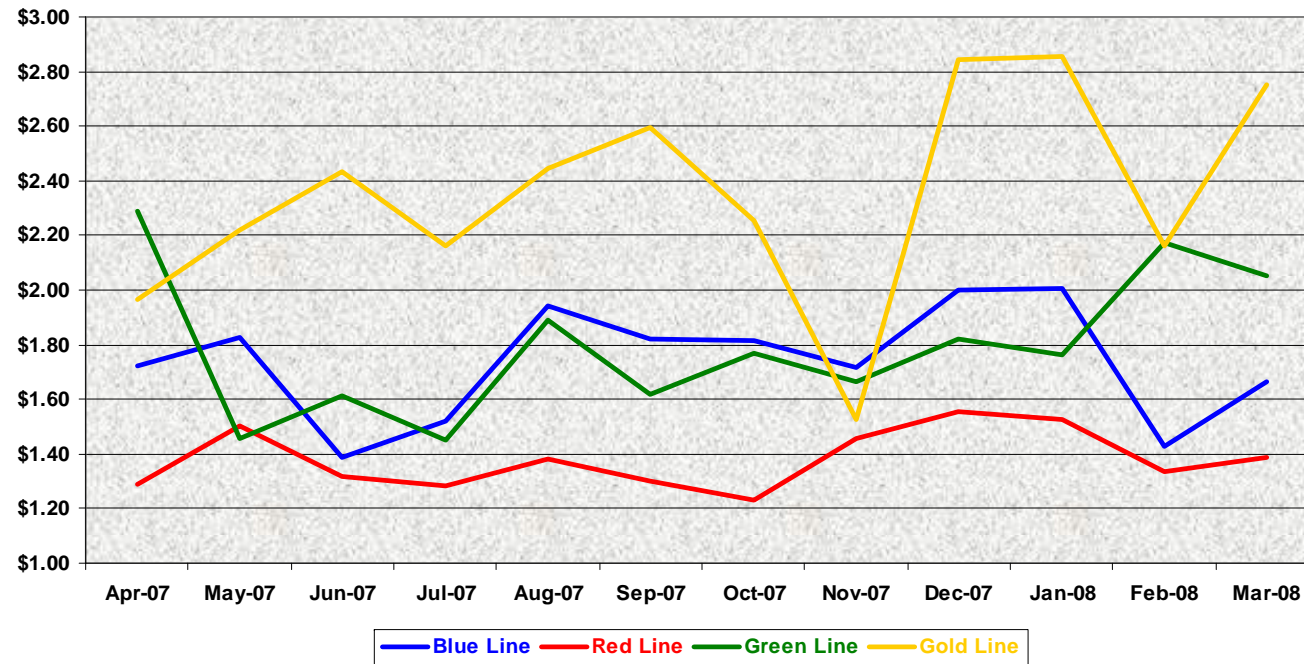
Labor Costs



Labor Costs	Apr-07	May-07	Jun-07	Jul-07	Aug-07	Sep-07	Oct-07	Nov-07	Dec-07	Jan-08	Feb-08	Mar-08
Blue Line	\$482K	\$475K	\$427K	\$476K	\$532K	\$508K	\$545K	\$496K	\$508K	\$498K	\$426K	\$505K
Red Line	\$450K	\$548K	\$485K	\$523K	\$527K	\$485K	\$489K	\$479K	\$471K	\$542K	\$481K	\$530K
Green Line	\$190K	\$194K	\$177K	\$196K	\$204K	\$190K	\$204K	\$185K	\$220K	\$223K	\$190K	\$225K
Gold Line	\$194K	\$211K	\$196K	\$202K	\$214K	\$208K	\$229K	\$186K	\$235K	\$240K	\$196K	\$222K
Totals	\$1,315K	\$1,427K	\$1,286K	\$1,397K	\$1,477K	\$1,392K	\$1,466K	\$1,346K	\$1,484K	\$1,503K	\$1,293K	\$1,482K

Cost Per Mile

Cost per mile:	Apr-07	May-07	Jun-07	Jul-07	Aug-07	Sep-07	Oct-07	Nov-07	Dec-07	Jan-08	Feb-08	Mar-08	Average
Blue Line	\$1.69	\$1.80	\$1.31	\$1.52	\$1.94	\$1.82	\$1.82	\$1.72	\$2.00	\$1.78	\$1.43	\$1.67	\$1.74
Red Line	\$1.25	\$2.12	\$1.29	\$1.28	\$1.38	\$1.30	\$1.23	\$1.28	\$1.56	\$1.52	\$1.33	\$1.39	\$1.38
Green Line	\$2.26	\$1.44	\$1.56	\$1.45	\$1.89	\$1.62	\$1.77	\$1.53	\$1.82	\$1.76	\$2.17	\$2.05	\$1.80
Gold Line	\$1.93	\$2.19	\$2.34	\$2.16	\$2.45	\$2.60	\$2.25	\$1.52	\$2.84	\$2.86	\$2.16	\$2.75	\$2.35



No facility costs are included

Capital Projects March, 2008

Division Number/ Location	Project Number/Name	Description	LOP Budget	Amount Spent	Amount Remaining	Scheduled Completion Date	New Projected Completion Date	Comments/Reason
Division 11 Blue Line	204009 – Improvements	Main Shop & Car Wash Extension	\$17,385,500	\$16,858,145	\$538,360	1/31/08	Open	Basic Contract Closeout. Change in scope – Traction Power engineering reviewing catwalk gate alarm specs.
Division 21 Gold Line	204017 – Improvements	Historic Aqueduct	\$4,500,000	\$1,678,053	\$810,807	5/23/08	9/30/08	Awaiting National Historic Registry.
Division 22 Green Line	204037 – Improvements Phase 2	Wheel True Pit & Machine. Crossover Train Control	\$4,895,000	\$2,242,777	\$1,632,609	3/07/08	1/07/09	WTM Pit will go to Closeout after WTM delivery & installation. Awaiting WTM delivery on 6/24/08. Crossover Train Control Closeout after Systra delivers As built drawings.
Division 20 Red Line	204047 – Car Wash & Cleaning Platform	Car Wash & Cleaning Platform	\$15,400,000	\$306,558	\$15,080,816	3/03/08	5/17/10	Extensive FM comments and changes to drawings. Material Readiness Review meeting to be convened after procurement reviews all documentation.
Division 21 Gold Line	204053 – Improvements Phase 2	Body Shop, Cleaning Platforms Improvements	\$5,000,000	\$466,364	\$4,491,383	3/31/08	9/25/09	Project redefined resulting in delay. Finalize scope of work.
Division 20 Red Line	204054 – Additional Hoists	Additional two double-pair Vehicle Hoists	\$4,250,000	\$106,330	\$1,906,970	6/30/08	5/12/09	Awaiting ROM from contractor.
Division 22 Green Line	204059 – Small Spray Paint Booth	Small Spray Paint Booth	\$150,000	\$40,134	\$109,866	5/16/08	10/08/09	ROM was submitted on 3/18/08.



Metro

Rail Fleet Services Instruction – March 2008

Description	Status	Start	End	Course Hours	Student Count	Training Hours
Blue Line Training (Nippon Sharyo 865/2020 LRV):						
NEW SERVICE ATTENDANT TRAINING	Complete	3/3/2008	3/19/2008	120	1	120
DRUG AND ALCOHOL	Complete	3/3/2008	3/14/2008	2	2	4
MOP INDIVIDUAL PERFORMANCE PLAN	Complete	3/6/2008	3/6/2008	2	1	2
Total Blue Line Training (Hours):						126
Red Line Training (Breda A650 HRV):						
NEW SERVICE ATTENDANT TRAINING	Complete	3/3/2008	3/19/2008	120	2	240
MOP INDIVIDUAL PERFORMANCE PLAN	Complete	3/6/2008	3/6/2008	2	1	2
Total Red Line Training (Hours):						242
Green Line Training (Siemens 2000 LRV):						
FORKLIFT, OSHA REFRESHER	Complete	3/8/2008	3/8/2008	2	37	74
NEW SERVICE ATTENDANT TRAINING	Complete	3/10/2008	3/26/2008	120	1	120
DRUG-AND-ALCOHOL-FREE WORK ENVIRONMENT POLICY	Complete	3/11/2008	3/11/2008	4	1	4
MOP INDIVIDUAL PERFORMANCE PLAN	Complete	3/6/2008	3/6/2008	2	1	2
MOP RECRUITMENT, SELECTION AND COMPENSATION	Complete	3/26/2008	3/26/2008	3	1	3
Total Green Line Training (Hours):						203
Gold Line Training (Siemens 2000 LRV):						
WRITING TECHNICAL REPORTS	Complete	3/25/2008	3/25/2008	3	1	3
ETD PUBLIC SPEAKING	Complete	3/20/2008	3/20/2008	3	1	3
ETD EFFECTIVE TIME MANAGEMENT	Complete	3/5/2008	3/5/2008	3	1	3
RFS SIEMENS 2000 DOOR CONTROL SYSTEMS	Complete	3/3/2008	3/14/2008	24	5	120
Total Gold Line Training (Hours):						129

Total Rail Fleet Services Instruction for the month of March 2008 (Hours): 460.0

Core Vehicle Training Completed:	BLUE	RED	GREEN	GOLD
Percentage of core vehicle training complete:	99.2%	99.1%	92.9%	59.5%
AnsaldoBreda 2550 Training Completed:	3.0%	N/A	1.7%	15.8%
Average Specialist Rail Experience Level in Years:	9.3	7.7	7.0	6.5

