



Rail Fleet Services Monthly Report May, 2008



Metro

Table of Contents

- **Safety**
 - Industrial Injuries Page 1
 - Rail Vehicle Accidents & Major Incidents Page 2
- **Customer Service**
 - Service Delivery – AM/PM Pull-Outs Page 3
 - Mean Miles Between Failures (Major) Page 4
 - Repeater Car Details Page 5
- **Business Processes**
 - Incident Problems & Locations: Blue & Red Lines Page 6
 - Incident Problems & Locations: Green & Gold Lines Page 7
 - Preventative Maintenance Compliance Page 8
- **Finance**
 - Vandalism & Graffiti Costs Page 9
 - Graffiti Pictures Page 10
 - Material & Labor Costs Page 12
 - Cost per mile Page 13
 - Capital Projects Page 14
- **Growth**
 - Rail Fleet Service Training Page 15

Industrial Injuries – Lost Work Hours

May 2008

	Jun-07	Jul-07	Aug-07	Sep-07	Oct-07	Nov-07	Dec-07	Jan-08	Feb-08	Mar-08	Apr-08	May-08	Year to Date
Blue Line	0	0	72	48	160	160	133	16	0	80	48	160	877
Red Line	192	264	256	160	184	152	0	0	184	80	48	368	1,888
Green Line	0	0	0	0	2	0	0	160	24	0	0	0	186
Gold Line	376	264	352	312	80	160	176	64	0	0	0	0	1,684
Totals	468	528	680	520	426	472	309	240	208	176	96	528	4,761

May 2008 Lost Work Hours

Blue Line – 111 Assigned Employees (105 Active)

- Service Attendant – 160 hours

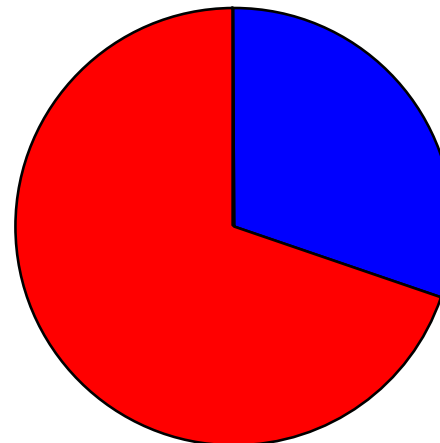
Red Line – 113 Assigned Employees (109 Active)

- Service Attendants – 328 hours
- Maintenance Specialist – 40 hours

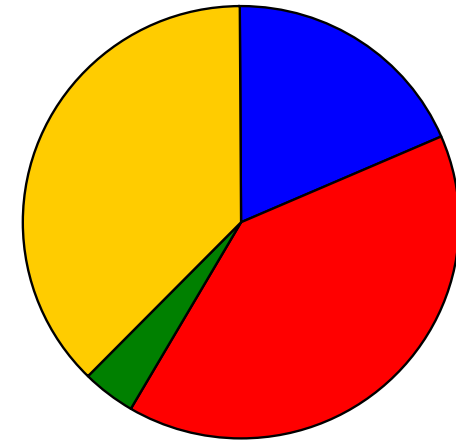
Total Lost Work Hours for May 2008 – 528 hours

Total Lost Work Hours for 12-Months – 4,761 hours

May 2008 Lost Work Hours



Year-to-Date



■ Blue Line
 ■ Red Line
 ■ Green Line
 ■ Gold Line

Rail Vehicle Accidents & Major Incidents

May 2008

	Jun-07	Jul-07	Aug-07	Sep-07	Oct-07	Nov-07	Dec-07	Jan-08	Feb-08	Mar-08	Apr-08	May-08
Blue Line	\$9,551	\$4,652	\$46,144	\$7,532	\$0	\$4,661	\$4,489	\$8,500	\$497	\$4,235	\$1,789	\$2,473
Red Line	\$0	\$0	\$0	\$0	\$0	\$203	\$0	\$0	\$0	\$274	0	0
Green Line	\$0	\$0	\$0	\$0	\$0	\$6,036	\$0	\$0	\$289	\$0	0	0
Gold Line	\$0	\$0	\$0	\$33,925	\$34,189	\$0	\$326	\$340	\$18,388	\$0	0	0
Totals	\$9,551	\$4,652	\$46,144	\$41,457	\$34,189	\$10,900	\$4,815	\$8,840	\$19,174	\$4,509	\$1,789	\$2,473

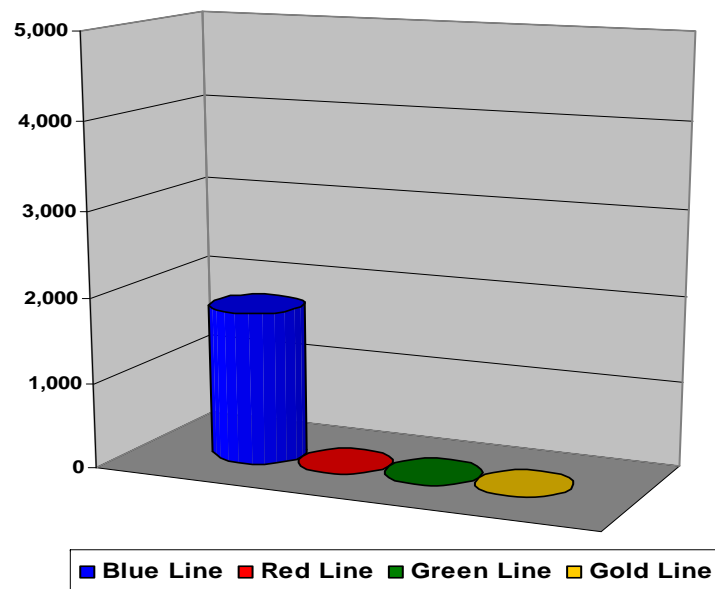
May 2008 Rail Vehicle Accidents & Major Incidents

Blue Line

- May 6, 2008 – Train vs. Auto traveling S/B on Flower making illegal left turn at Pico. Train #10, making contact with vehicle. T-28, student with T-226 car 138A-136-102. (\$1,565)
- May 8, 2008 – Train vs. Auto. T-230, train #3, track one, 7th/Pacific, cars 138B-128-152 reports 10-73. (\$719)
- May 14, 2008 – Train vs. Ped at PedX T-228. Tr#13 LRV 148A (122-120) Train vs. Pedestrian at Compton Pedestrian crossing, Track #1. (\$189)

The monthly accident charges listed above represent only the expenses incurred in that particular month and are not a total repair of an individual accident.

May, 2008 Damage Costs



Service Delivery – AM/PM Pull-Outs May 2008

Cars Available for AM/PM Pull-Outs

	Jun-07	Jul-07	Aug-07	Sep-07	Oct-07	Nov-07	Dec-07	Jan-08	Feb-08	Mar-08	Apr-08	May-08
Blue Line	100%	100%	100%	100%	100%	100%	99%	100%	100%	100%	100%	100%
Red Line	100%	100%	100%	100%	100%	100%	100%	100%	100%	100%	100%	100%
Green Line	100%	100%	100%	100%	100%	100%	100%	100%	100%	100%	100%	100%
Gold Line	100%	100%	100%	100%	100%	100%	100%	100%	100%	100%	100%	98%

AM/PM Pull-Out Requirements

Blue Line – Fleet Size 69 cars

- Weekday pull-out: 60 cars
- Weekend pull-out: 36 cars
- **Monthly Mileage: 405,491 miles**

Red Line - Fleet Size 104 cars

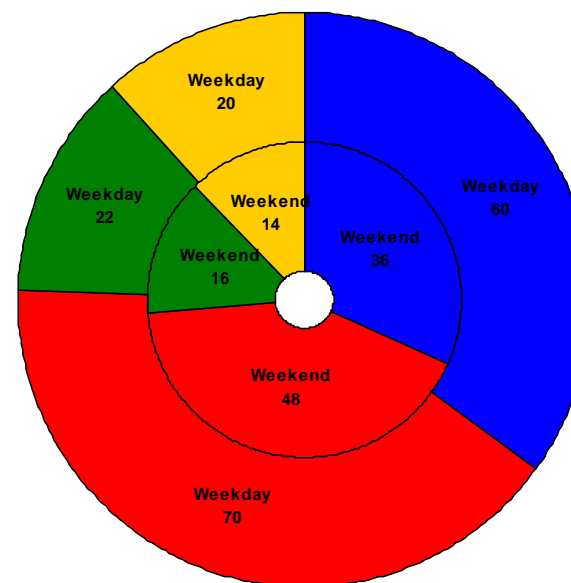
- Weekday pull-out: 70 cars
- Weekend pull-out: 48 cars
- **Monthly Mileage: 552,450 miles**

Green Line – Fleet Size 28 cars

- Weekday pull-out: 22 cars
- Weekend pull-out: 16 cars
- **Monthly Mileage: 219,875 miles**

Gold Line – Fleet Size 24 cars

- Weekday pull-out: 20 cars
- Weekend pull-out: 14 cars
- **Monthly Mileage: 150,320 miles**



■ Blue Line ■ Red Line ■ Green Line ■ Gold Line

Mean Miles Between Failures (Major) May 2008

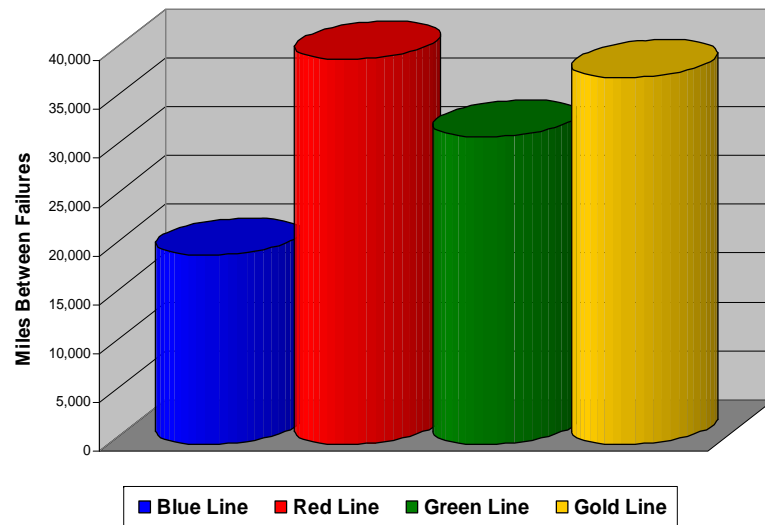
FTA Major Failures

Blue Line: 19,309 miles (21 FTA Major Failures)

Red Line: 39,461 miles (14 FTA Major Failures)

Green Line: 31,411 miles (7 FTA Major Failures)

Gold Line: 37,580 miles (4 FTA Major Failures)



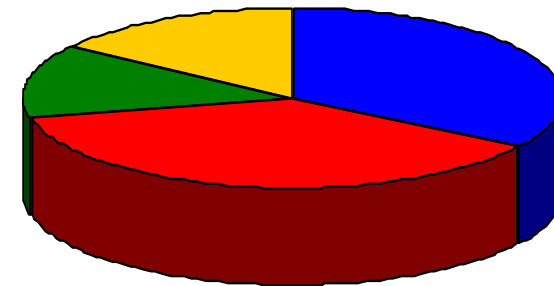
Repeat Failures

Blue Line: 31 Repeat Failures

Red Line: 34 Repeat Failures

Green Line: 12 Repeat Failures

Gold Line: 14 Repeat Failures



■ Blue Line ■ Red Line ■ Green Line ■ Gold Line

Repeater Car Details

May 2008

	BLUE LINE		RED LINE		GREEN LINE		GOLD LINE	
System	Car #	No. of Repeats	Car #	No. of Repeats	Car #	No. of Repeats	Car #	No. of Repeats
Announcements					217	1		
Automatic Train Operation					209	2		
Auxiliary Power (M/A)	137	1						
Car Body			588	1				
Destination Sign (TICU)			602 597	1 1				
Doors	102 104 106 116 121 124 132 153 162	1 2 1 1 1 2 1 9 1	504 538 576 592	1 1 1 1	219	1	238 708	1 1
Emergency Brakes in ATO			598 550 600	1 1 1				
Flats					202 222	1 1	232	3
Friction Brakes	112 135 156	1 1 1	532 547 594	1 2 1			232	1
HVAC			559	3	215	1	229 237 242	1 1 2
PA Intercom			595 603	1 1				
Propulsion/Dynamic Brake	112 138 151 166	1 3 1 1	504 516 519 550 558 570 573 581 586 601	1 2 1 1 1 2 1 1 1 4	205 209 212 225	2 1 1 1	231 246 706	1 2 1
Radio	138	2						
TOTALS	16	31	25	34	9	12	9	14

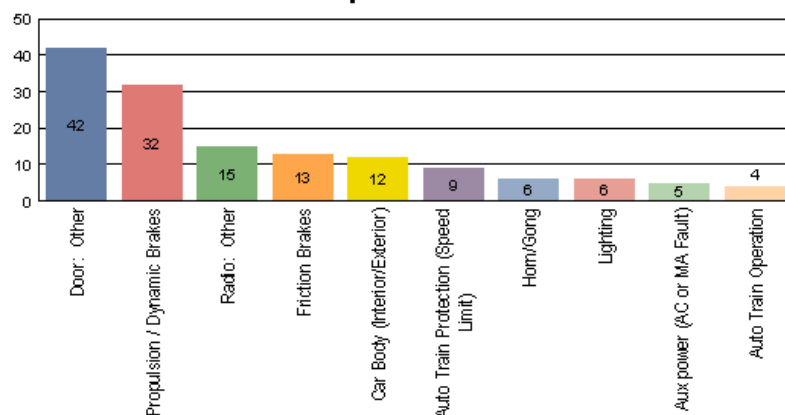


Metro

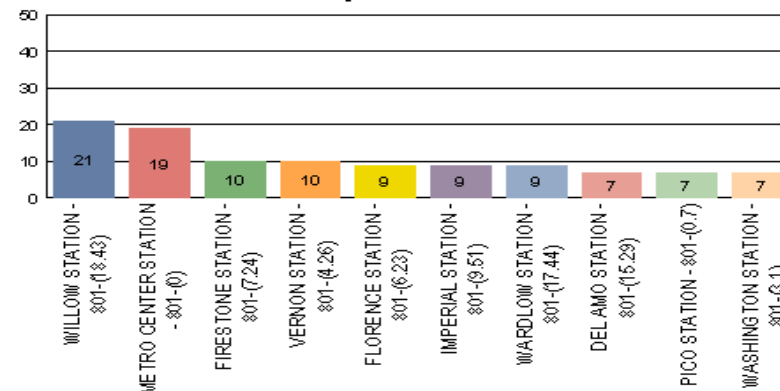
Incident Problems & Locations – Blue & Red Lines

Blue Line – May 2008

Count of the Top 10 Incident Problems

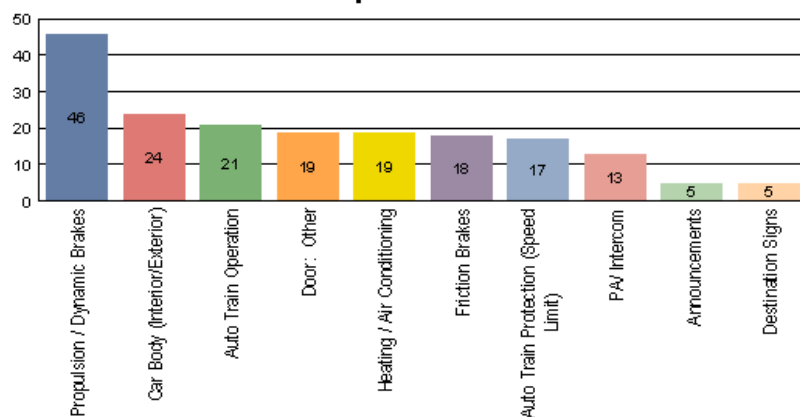


Count of the Top 10 Incident Locations

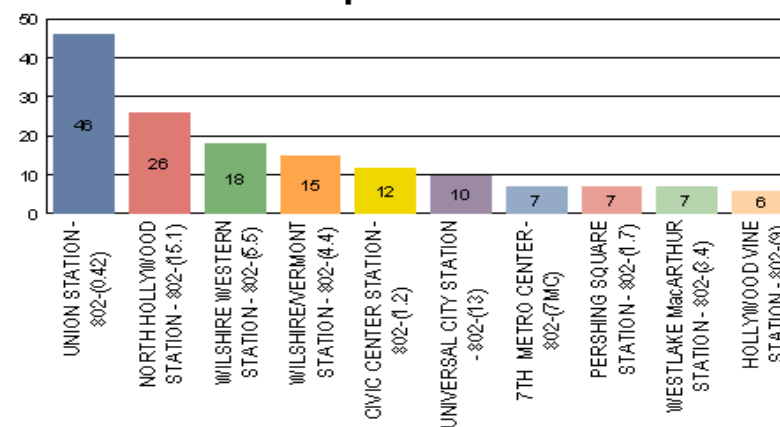


Red Line – May 2008

Count of the Top 10 Incident Problems



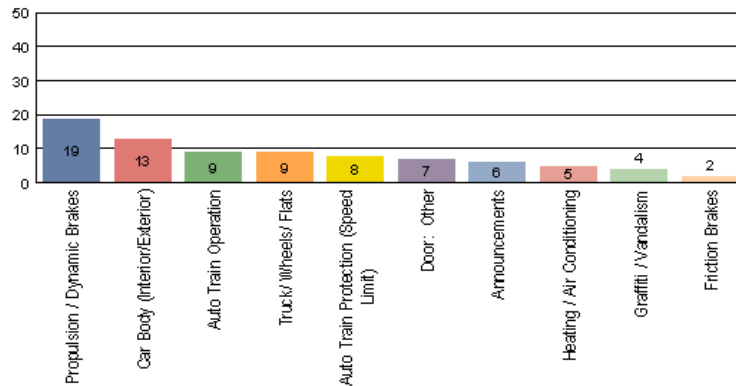
Count of the Top 10 Incident Locations



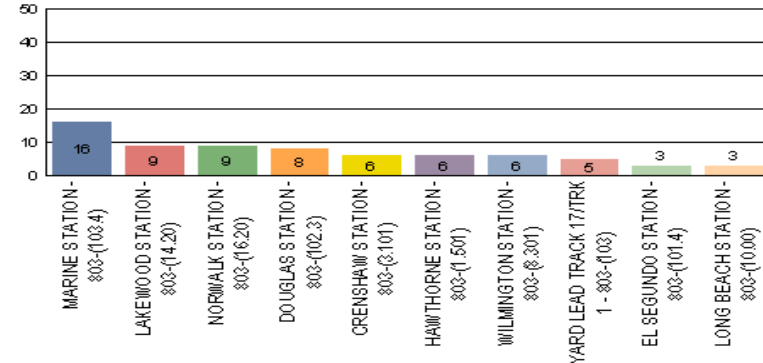
Incident Problems & Locations – Green & Gold Lines

Green Line - May 2008

Count of the Top 10 Incident Problems

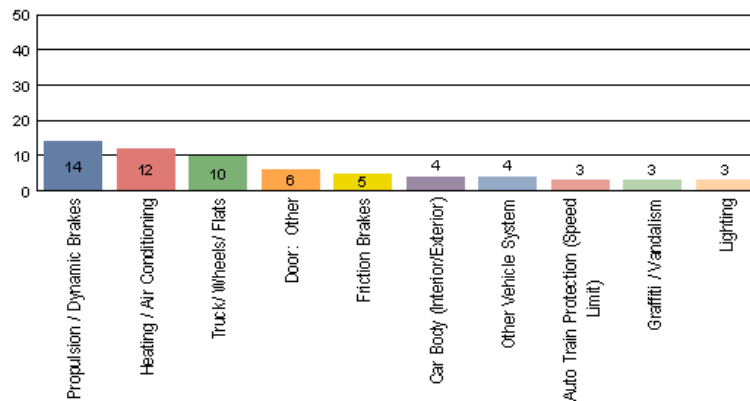


Count of the Top 10 Incident Locations

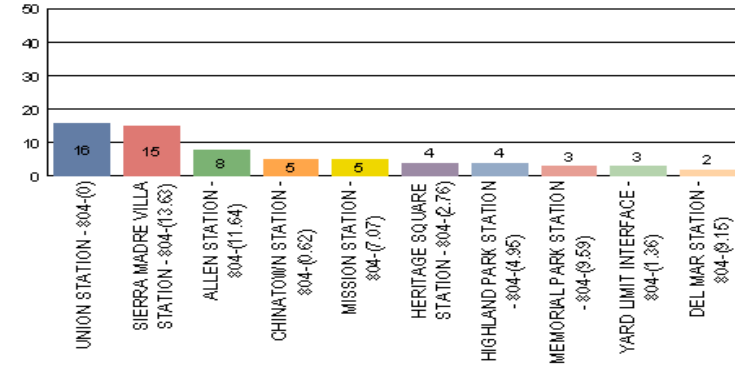


Gold Line - May 2008

Count of the Top 10 Incident Problems



Count of the Top 10 Incident Locations



Preventative Maintenance Compliance

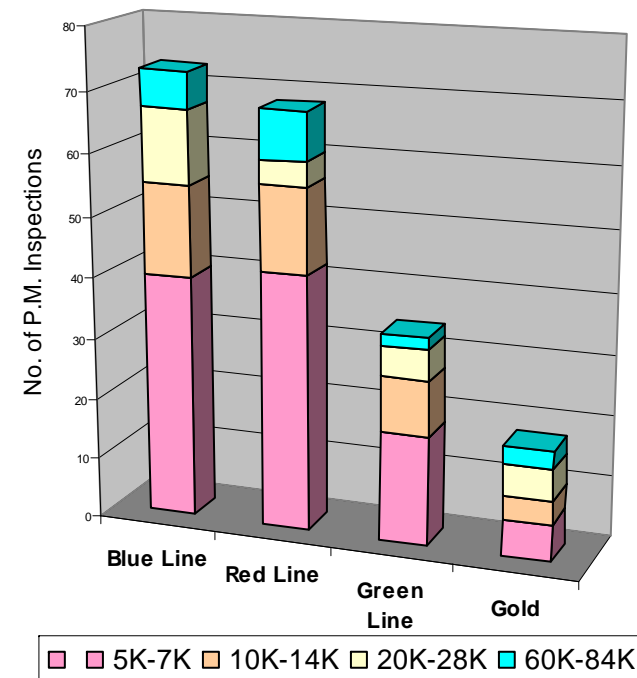
May 2008

	Jun-07	Jul-07	Aug-07	Sep-07	Oct-07	Nov-07	Dec-07	Jan-08	Feb-08	Mar-08	Apr-08	May-08
Blue Line	100%	100%	100%	100%	100%	100%	100%	100%	100%	100%	100%	100%
Red Line	100%	100%	100%	100%	100%	100%	99%	100%	100%	100%	100%	100%
Green Line	100%	100%	100%	100%	100%	100%	100%	95%	100%	100%	100%	100%
Gold Line	100%	100%	100%	100%	100%	100%	100%	100%	100%	100%	100%	100%

May 2008 Preventative Maintenance Inspections

No. of P.M. Inspections	5K	10K	20K	60K	Totals
Blue Line	42	24	8	8	82

No. of P.M. Inspections	7K	14K	28K	84K	Totals
Red Line	36	24	16	4	80
Green Line	14	8	6	2	30
Gold Line	12	6	2	3	23



Vandalism & Graffiti Report

May 2008

	Jun-07	Jul-07	Aug-07	Sep-07	Oct-07	Nov-07	Dec-07	Jan-08	Feb-08	Mar-08	Apr-08	May-08	Year To Date
Blue Line	\$33,340	\$41,364	\$41,364	\$54,873	\$68,406	\$78,067	\$84,209	\$69,383	\$67,624	\$27,270	\$33,717	\$22,258	\$622K
Red Line	\$21,464	\$11,906	\$11,906	\$11,645	\$9,355	\$15,156	\$13,231	\$16,100	\$17,874	\$18,388	\$17,477	\$15,881	\$180K
Green Line	\$28,478	\$32,716	\$33,547	\$44,227	\$33,832	\$37,022	\$37,495	\$31,632	\$28,564	\$41,259	\$36,670	\$45,594	\$431K
Gold Line	\$4,347	\$4,840	\$5,992	\$4,980	\$4,980	\$6,416	\$11,638	\$2,030	\$4,715	\$13,544	\$14,864	\$17,174	\$92K
Totals	\$87,629	\$90,826	\$92,809	\$115,725	\$113,442	\$136,661	\$146,573	\$119,145	\$118,777	\$100,461	\$102,728	\$100,907	\$1.3M

May 2008 Vandalism & Graffiti

Windows replaced: 72 @ \$8,085

Vandal Shields replaced: 601 @ \$13,934

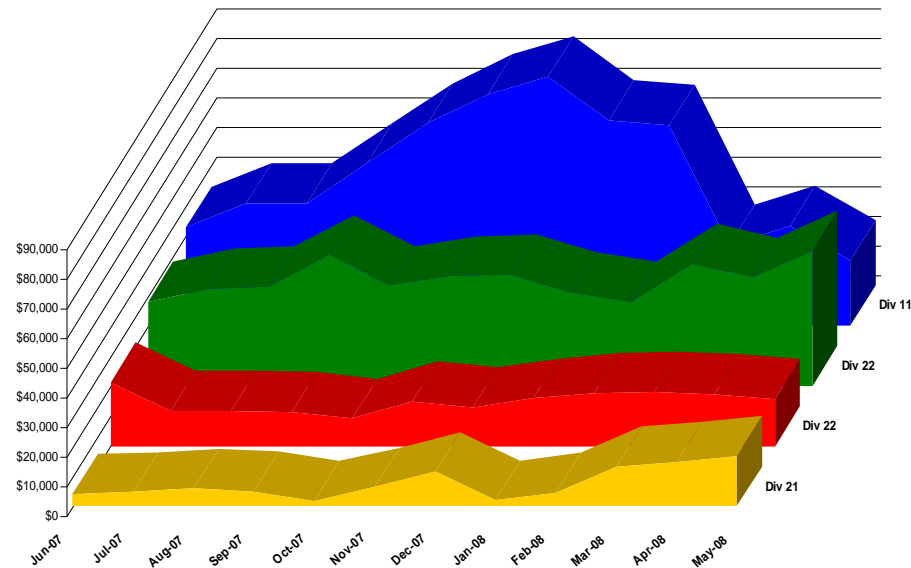
Seats cleaned: 6,432

Seats replaced: 55 @ \$4,272

Ext./Int. repairs: \$4,220

Labor = \$62,465

Total for May 2008: \$100,907



Vandalism & Graffiti Pictures

May, 2008



Red Line



Gold Line



Blue Line



Vandalism & Graffiti Pictures

May, 2008



Green Line

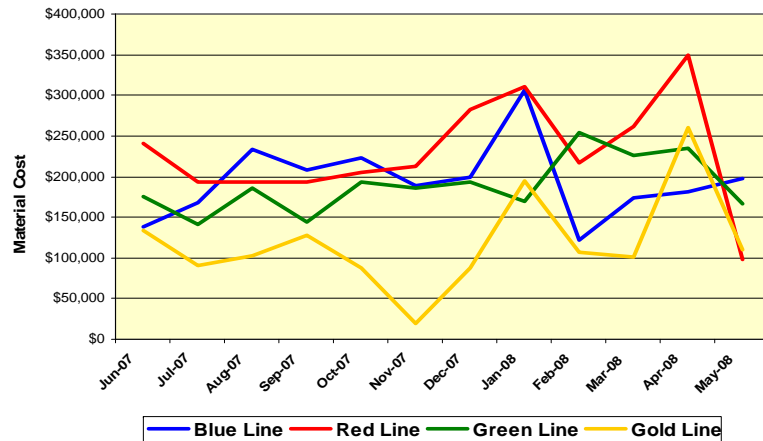


Material and Labor Costs

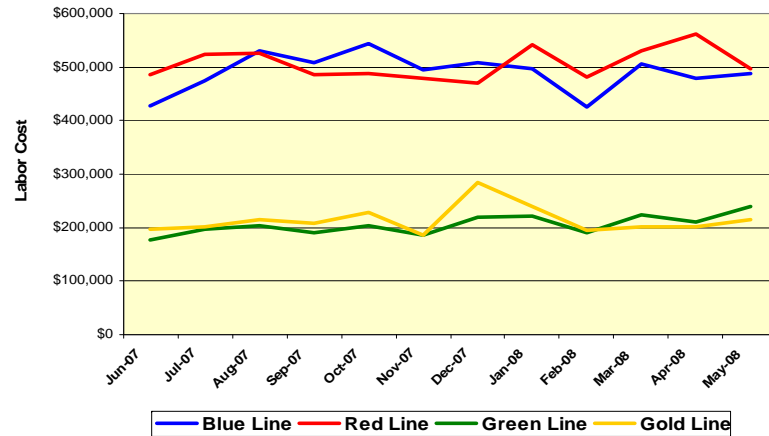
May 2008

Material Costs	Jun-07	Jul-07	Aug-07	Sep-07	Oct-07	Nov-07	Dec-07	Jan-08	Feb-08	Mar-08	Apr-08	May-08
Blue Line	\$109K	\$177K	\$209K	\$176K	\$224K	\$189K	\$200K	\$307K	\$123K	\$174K	\$181K	\$197K
Red Line	\$227K	\$180K	\$147K	\$209K	\$205K	\$212K	\$283K	\$311K	\$217K	\$261K	\$349K	\$99K
Green Line	\$164K	\$143K	\$181K	\$139K	\$193K	\$185K	\$132K	\$169K	\$254K	\$225K	\$235K	\$166K
Gold Line	\$121K	\$91K	\$100K	\$119K	\$88K	\$19K	\$154K	\$195K	\$107K	\$101K	\$260K	\$110K
Totals	\$620K	\$591K	\$638K	\$643K	\$710K	\$559K	\$768K	\$982K	\$701K	\$761K	\$1,052K	\$572K

Material Costs



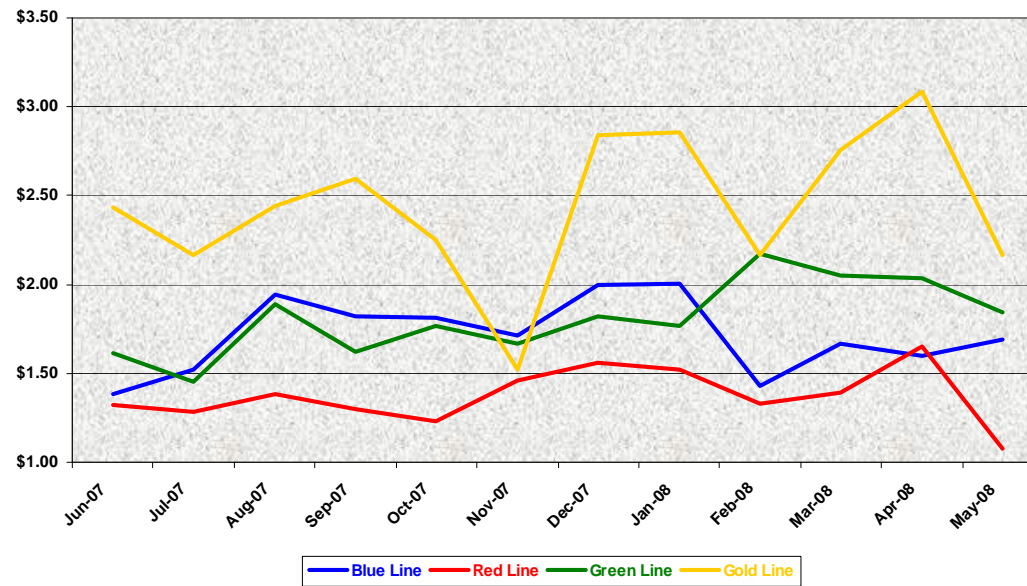
Labor Costs



Labor Costs	Jun-07	Jul-07	Aug-07	Sep-07	Oct-07	Nov-07	Dec-07	Jan-08	Feb-08	Mar-08	Apr-08	May-08
Blue Line	\$427K	\$476K	\$532K	\$508K	\$545K	\$496K	\$508K	\$498K	\$426K	\$505K	\$479K	\$487K
Red Line	\$485K	\$523K	\$527K	\$485K	\$489K	\$479K	\$471K	\$542K	\$481K	\$530K	\$563K	\$498K
Green Line	\$177K	\$196K	\$204K	\$190K	\$204K	\$185K	\$220K	\$223K	\$190K	\$225K	\$211K	\$239K
Gold Line	\$196K	\$202K	\$214K	\$208K	\$229K	\$186K	\$235K	\$240K	\$196K	\$222K	\$202K	\$216K
Totals	\$1,286K	\$1,397K	\$1,477K	\$1,392K	\$1,466K	\$1,346K	\$1,484K	\$1,503K	\$1,293K	\$1,482K	\$1,454K	\$1,440K

Cost Per Mile May 2008

Cost per mile:	Jun-07	Jul-07	Aug-07	Sep-07	Oct-07	Nov-07	Dec-07	Jan-08	Feb-08	Mar-08	Apr-08	May-08	Average
Blue Line	\$1.31	\$1.52	\$1.94	\$1.82	\$1.82	\$1.72	\$2.00	\$1.78	\$1.43	\$1.67	\$1.60	\$1.69	\$1.86
Red Line	\$1.29	\$1.28	\$1.38	\$1.30	\$1.23	\$1.28	\$1.56	\$1.52	\$1.33	\$1.39	\$1.65	\$1.08	\$1.46
Green Line	\$1.56	\$1.45	\$1.89	\$1.62	\$1.77	\$1.53	\$1.82	\$1.76	\$2.17	\$2.05	\$2.04	\$1.84	\$1.96
Gold Line	\$2.34	\$2.16	\$2.45	\$2.60	\$2.25	\$1.52	\$2.84	\$2.86	\$2.16	\$2.75	\$3.09	\$2.17	\$2.62



No facility costs are included

Capital Projects May 2008

Division Number/ Location	Project Number/Name	Description	LOP Budget	Amount Spent	Amount Remaining	Scheduled Completion Date	New Projected Completion Date	Comments/Reason
Division 11 Blue Line	204009 – Improvements	Main Shop & Car Wash Extension	\$17,385,500	\$16,862,893	\$532,607	1/31/08	Open	Traction Power engineering reviewing catwalk gate alarm specs. TP Eng will deliver design to B. Rydell NLT 6/13/08. Either Facilities Maintenance or Traction Power will do the work.
Division 21 Gold Line	204017 – Improvements	Historic Aqueduct	\$4,500,000	\$1,698,318	2,801,682	5/23/08	9/30/08	Awaiting National Historic Registry. Wilbur Babb is coordinating. Should close out about 9/15/08. No Change
Division 22 Green Line	204037 – Improvements Phase 2	Wheel True Pit & Machine. Crossover Train Control	\$4,895,000	\$3,371,818	\$1,523,182	3/07/08	1/07/09	WTM Pit will go to Closeout after WTM installation. WTM was delivered on 5/21/08. Installation is in progress. Crossover Train Control Closeout after Systra delivers As built drawings mid-June.
Division 20 Red Line	204047 – Car Wash & Cleaning Platform	Car Wash & Cleaning Platform	\$15,400,000	\$12,639,561	\$2,760,439	3/03/08	5/17/10	Procurement to placed ads for bidders in mid-May. Awaiting bidder responses NLT mid-June (advertised for 30 days)
Division 21 Gold Line	204053 – Improvements Phase 2	Body Shop, Cleaning Platforms Improvements	\$5,000,000	\$566,858	\$4,433,142	3/31/08	9/25/09	Aspet Davidian is coordinating the new design. Coordination meeting was held on 5/29/08 with Dennis Mori to identify Plan B as the path forward.
Division 20 Red Line	204054 – Additional Hoists	Additional two double-pair Vehicle Hoists	\$4,250,000	\$2,394,537	\$1,855,463	6/30/08	5/12/09	Construction Manager Tom Lee has directed the contractor to resubmit their contract documents, which were disapproved by MTA.. No Change. Awaiting contractor response.
Division 22 Green Line	204059 – Small Spray Paint Booth	Small Spray Paint Booth	\$150,000	\$93,912	\$56,088	5/16/08	10/08/09	\$100,000 ROM submitted & sent to Tom Zhao for action. No Change.

Rail Fleet Services Instruction May 2008

Description	Status	Start	End	Course Hours	Student Count	Training Hours
Blue Line Training (Nippon Sharyo 865/2020 LRV):						
HAZARD COMMUNICATION TRAINING	Complete	5/13/2008	5/13/2008	4	1	4
TRANSITSAFE WEB/VAMS OVERVIEW AND TRAINING FOR RAIL OPERATIONS	Complete	5/8/2008	5/8/2008	3	2	6
Total Blue Line Training (Hours):						10
Red Line Training (Breda A650 HRV):						
BLOODBORNE PATHOGENS	Complete	5/20/2008	5/29/2008	2	3	6
BLOODBORNE PATHOGENS (VIDEO)	Complete	5/29/2008	5/29/2008	2	2	4
OSHA 30-HOUR CLASS - PART 2	Complete	5/15/2008	5/22/2008	15	1	15
OSHA 30-HOUR CLASS - PART 1	Complete	5/1/2008	5/8/2008	15	1	15
TRANSITSAFE WEB/VAMS OVERVIEW AND TRAINING FOR RAIL OPERATIONS	Complete	5/8/2008	5/8/2008	3	1	3
Total Red Line Training (Hours):						43
Green Line Training (Siemens 2000 LRV):						
MOP RECORDS MANAGEMENT	Complete	5/27/2008	5/27/2008	2	2	4
POWERPOINT 2003 - INTERMEDIATE	Complete	5/13/2008	5/13/2008	3.5	1	3.5
HAZARD COMMUNICATION TRAINING	Complete	5/13/2008	5/13/2008	4	1	4
Total Green Line Training (Hours):						11.5
Gold Line Training (Siemens 2000 LRV):						
RFS SIEMENS 2000 LIGHTS & DEST. SIGNS	Complete	5/29/2008	5/29/2008	8	3	24
RFS SIEMENS 2000 COMMUNICATIONS	Complete	5/26/2008	5/28/2008	16	3	48
RFS SIEMENS 2000 HVAC	Complete	5/12/2008	5/23/2008	64	4	256
Total Gold Line Training (Hours):						328
Total Rail Fleet Services Instruction for the month of May 2008 (Hours):						392.5

Other Projects being worked on by Instructors:

Between Car Barriers Light Beam Test - Gary Dewater
 ADA Door Entry Audio Alert - Gary Dewater
 Red Line Automated Announcements - Russell Homan

Core Vehicle Training Completed:

	BLUE	RED	GREEN	GOLD
Percentage of core vehicle training complete:	99.2%	97.6%	83.5%	62.3%
AnsaldoBreda 2550 Training Completed:	3.0%	N/A	1.6%	15.1%
Average Specialist Rail Experience Level in Years:	9.4	7.8	6.8	6.5

