



Rail Fleet Services Monthly Report November 2008



Metro

Table of Contents

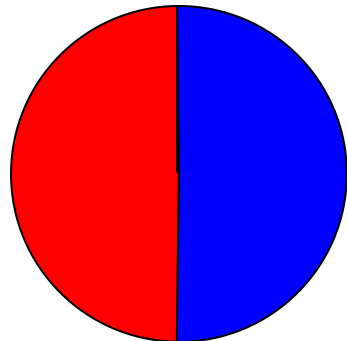
- Safety
 - Industrial Injuries Page 1
 - Rail Vehicle Accidents & Major Incidents Page 2
- Customer Service
 - Service Delivery – AM/PM Pull-Outs Page 3
 - Vehicle Utilization – Blue Line & Green Line Page 4
 - Vehicle Utilization – Red Line & Gold Line Page 5
 - Mean Miles Between Failures (Major) Page 6
 - Repeater Car Details Page 7
 - Metro Rail Reliability Page 8
- Business Processes
 - Incident Problems Page 9
 - Preventative Maintenance Compliance Page 10
- Finance
 - Vandalism & Graffiti Costs Page 11
 - Graffiti Pictures Page 12
 - Material & Labor Costs Page 13
 - Cost per mile Page 14
 - Absences vs. Overtime Page 15
- Growth
 - Rail Fleet Service Training Page 16
- Rail News
 - Blue Line Pantograph Entanglement Page 17

Industrial Injuries – Lost Work Hours

November 2008

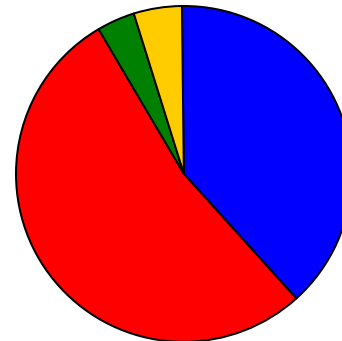
	Dec-07	Jan-08	Feb-08	Mar-08	Apr-08	May-08	Jun-08	Jul-08	Aug-08	Sep-08	Oct-08	Nov-08	Year to Date
Blue Line	133	16	0	80	48	160	112	152	240	320	352	328	1,941
Red Line	0	0	184	80	48	368	344	344	392	264	352	328	2,704
Green Line	0	160	24	0	0	0	0	0	0	0	0	0	184
Gold Line	176	64	0	0	0	0	0	0	0	0	0	0	240
Totals	309	240	208	160	96	528	456	496	632	584	704	656	5,069

Octoberber 2008 - Lost Work Hours



■ Blue Line ■ Red Line ■ Green Line ■ Gold Line

Year-to-Date Lost Work Hours



■ Blue Line ■ Red Line ■ Green Line ■ Gold Line

	Employees		November 2008 Lost Work Hours		
	Assigned	Active	Service Attendant	Maint. Specialist	November 2008 Total Hours
Blue Line	111	108	168	160	328
Red Line	109	102	328	0	328
Green Line	47	47	0	0	0
Gold Line	46	45	0	0	0
Totals	314	302	496	160	656
Total Lost Work Hours for 12-months = 5,069 hours					

Rail Vehicle Accidents & Major Incidents

November 2008

	Dec-07	Jan-08	Feb-08	Mar-08	Apr-08	May-08	Jun-08	Jul-08	Aug-08	Sep-08	Oct-08	Nov-08	Totals
Blue Line	\$4,489	\$8,500	\$497	\$4,235	\$1,789	\$2,473	\$1,412	\$14,603	\$7,308	\$55,579	\$1,672	\$1,312	\$103,869
Red Line	\$0	\$0	\$0	\$274	\$0	\$0	\$418	\$0	\$3,127	\$0	\$0		\$3,819
Green Line	\$0	\$0	\$289	\$0	\$0	\$0	\$0	\$0	\$0	\$15,758	\$0	\$4,181	\$20,228
Gold Line	\$326	\$340	\$18,388	\$0	\$0	\$0	\$0	\$0	\$3,504	\$0	\$0		\$22,558
Totals	\$4,815	\$8,840	\$19,174	\$4,509	\$1,789	\$2,473	\$1,830	\$14,603	\$13,939	\$71,337	\$1,672	\$5,493	\$150,474



Dashboard
Camera
Nov. 22
Car 147



Dashboard
Camera
Nov. 22
Car 102

Rail Vehicle Accident Costs - November, 2008			
2008	Problem code	Incident Description	Cost
November 5	Train vs. Equipment Blue Line	Train 7 ran over something that sheared off the drain cock on car 145.	\$76
November 19	Train vs. Other Blue Line	Train 8 struck a broken gate at 92nd street damaging the Center Truck Brake Control Unit on car 145	\$728
November 22	Train vs. Auto Blue Line	Train 3 at Pico Switch, track 2, car 102, Auto turned left in front of train, damage to skirt & support. Post accident Investigation.	\$144
November 22	Train vs. Pedestrian Blue Line	Train 6 at Flower & 18th Street, southbound at Track 2, Post Accident Investigation of vehicles.	\$364
November 26	Train vs. Other Green Line	Missile struck windshield of Train 58 at Garfield overpass between Long Beach and Lakewood stations. Broken Windshield on car 203.	\$4,181
Blue Line Total Repair Cost			\$1,312
Green Line Total Repair Costs			\$4,181
No accidents for Red & Gold Lines			

Service Delivery – AM/PM Pull-Outs

November 2008

Cars Available for AM/PM Pull-Outs

Blue Line – Fleet Size 69 cars

- Weekday pull-out: 60 cars
- Weekend pull-out: 36 cars
- **Monthly Mileage: 424,466 miles**

Red Line - Fleet Size 104 cars

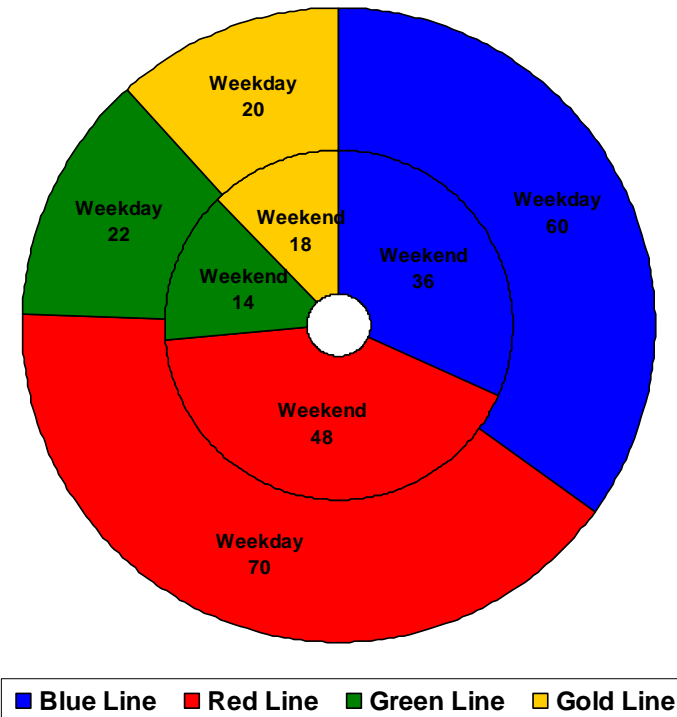
- Weekday pull-out: 70 cars
- Weekend pull-out: 48 cars
- **Monthly Mileage: 569,212 miles**

Green Line – Fleet Size 28 cars

- Weekday pull-out: 22 cars
- Weekend pull-out: 14 cars
- **Monthly Mileage: 237,068 miles**

Gold Line – Fleet Size 34 cars

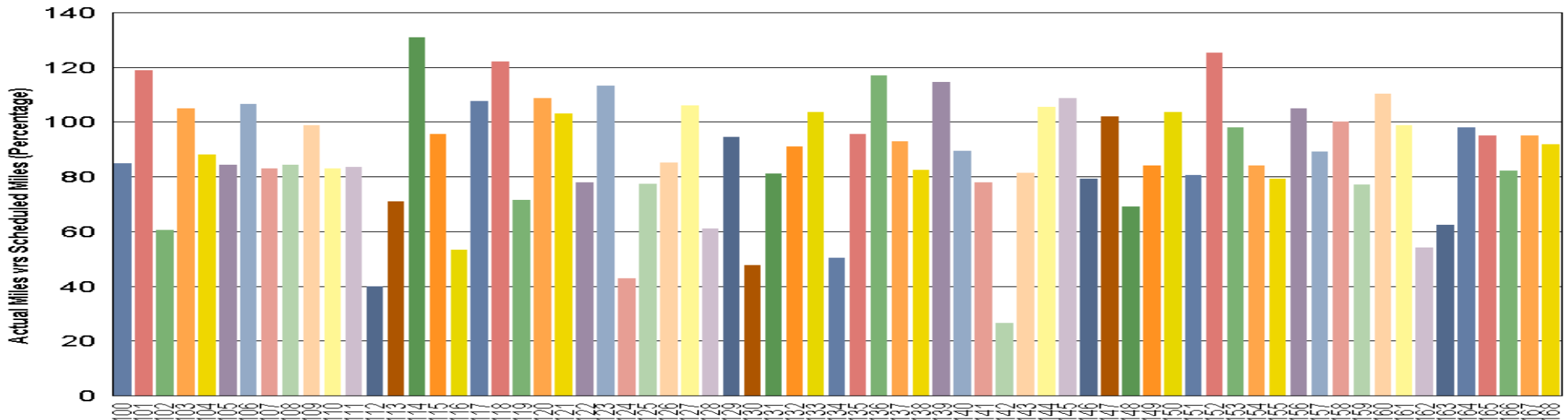
- Weekday pull-out: 20 cars
- Weekend pull-out: 18 cars
- **Monthly Mileage: 154,222 miles**



VEHICLE UTILIZATION

November 1, 2008 to November 31, 2008

Blue Line

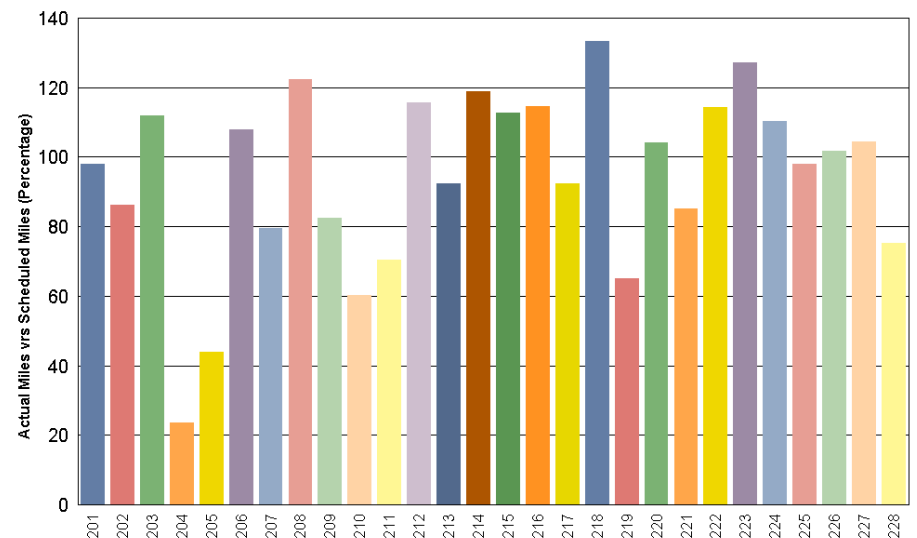


Blue Line - Car 142 has been in the Body Shop for Roof Repair.

Green Line - Car 204 is out of service awaiting parts to repair the Propulsion system.

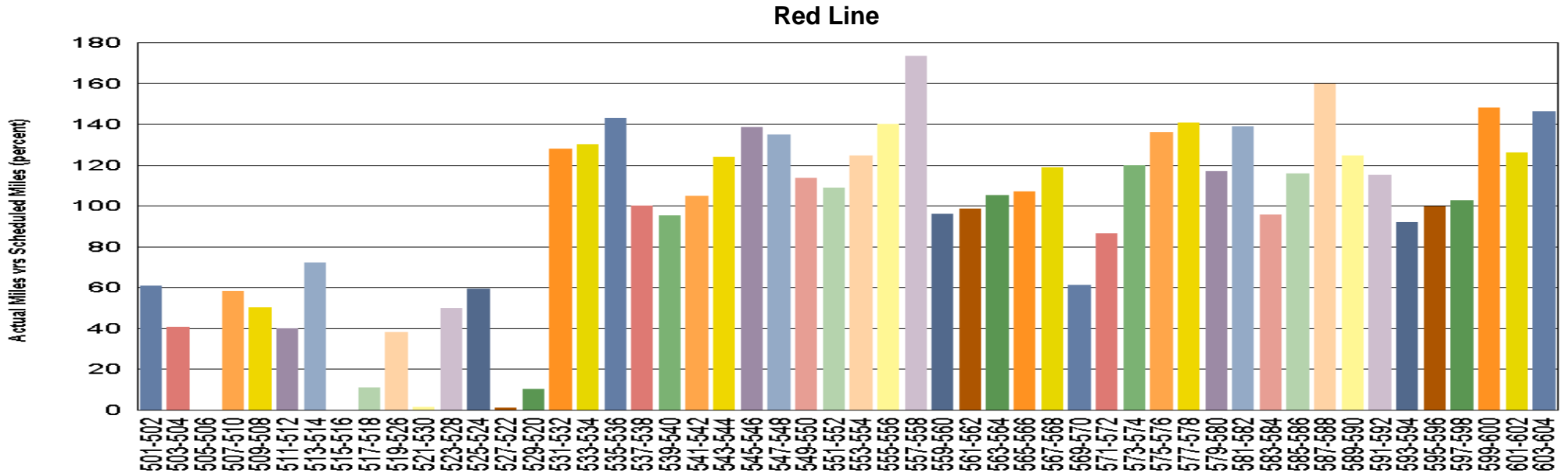
Percentage includes an average 4% mileage deduction for Yard mileage and Vehicle Testing.

Green Line



VEHICLE UTILIZATION

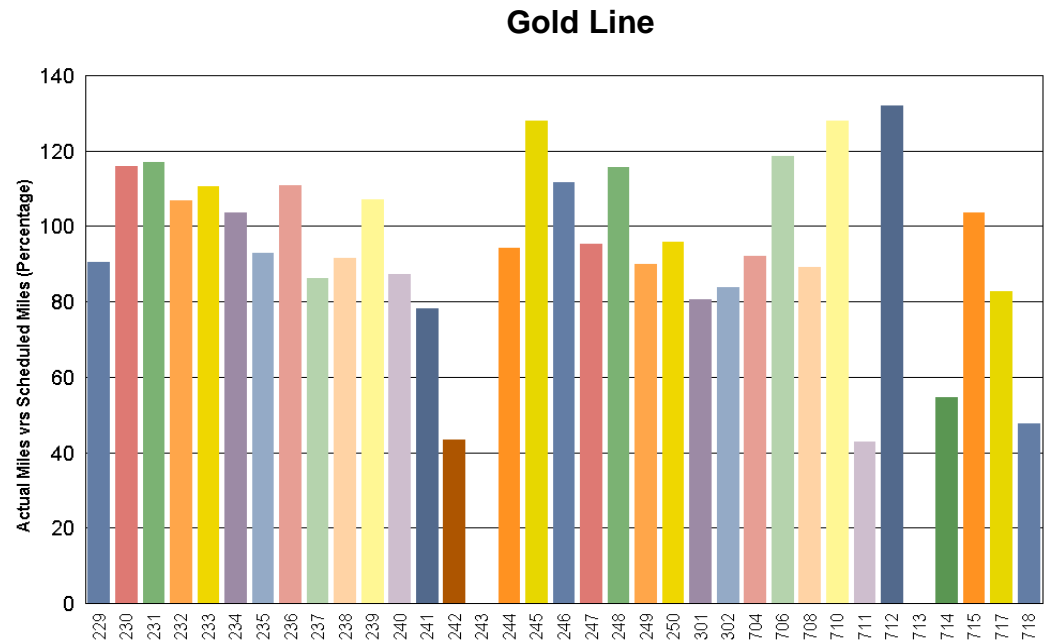
November 1, 2008 to November 31, 2008



Red Line - The original 30 Base Buy cars are not being used to their fullest potential so the remaining Option Buy cars are forced to pick up the slack.

Gold Line - Car 243 is in Sacramento having its fire damage repaired and AnsaldoBreda car # 713 was just accepted on Nov. 25th.

Percentage includes an average 4% mileage deduction for Yard mileage and Vehicle Testing



Mean Miles Between Failures (Major)

November 2008

Miles Between Major Failures

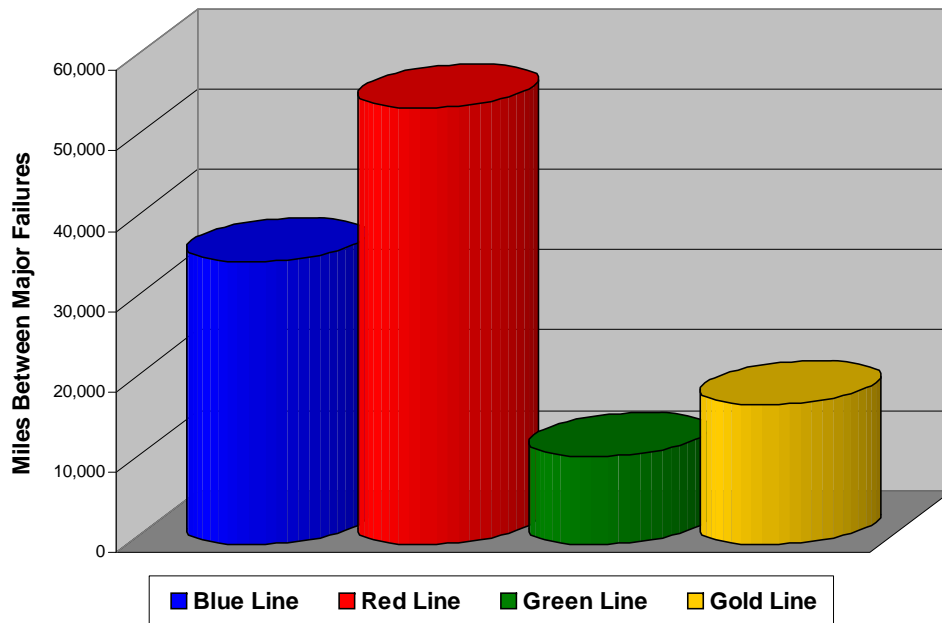
Blue Line: 35,064 miles (11 Major Failures)

Red Line: 54,276 miles (10 Major Failures)

Green Line: 10,882 miles (20 Major Failures)

Gold Line: 17,364 miles (9 Major Failures)

Siemens P2000 35,235 miles (3 Major Failures)
AnsaldoBreda P2550 8,262 miles (6 Major Failures)



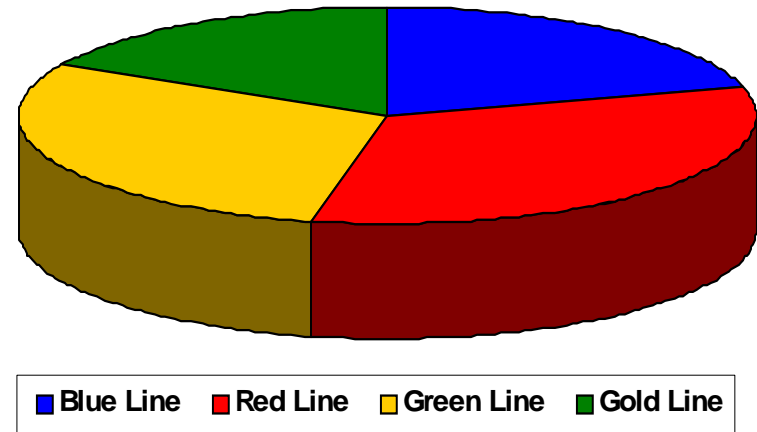
Repeat Failures

Blue Line: 12 Repeat Failures (Down 15 from last month)

Red Line: 19 Repeat Failures (Down 14 from last month)

Green Line: 17 Repeat Failures (Down 3 from last month)

Gold Line: 10 Repeat Failures (Up 6 from last month)



Repeater Car Details

November 2008

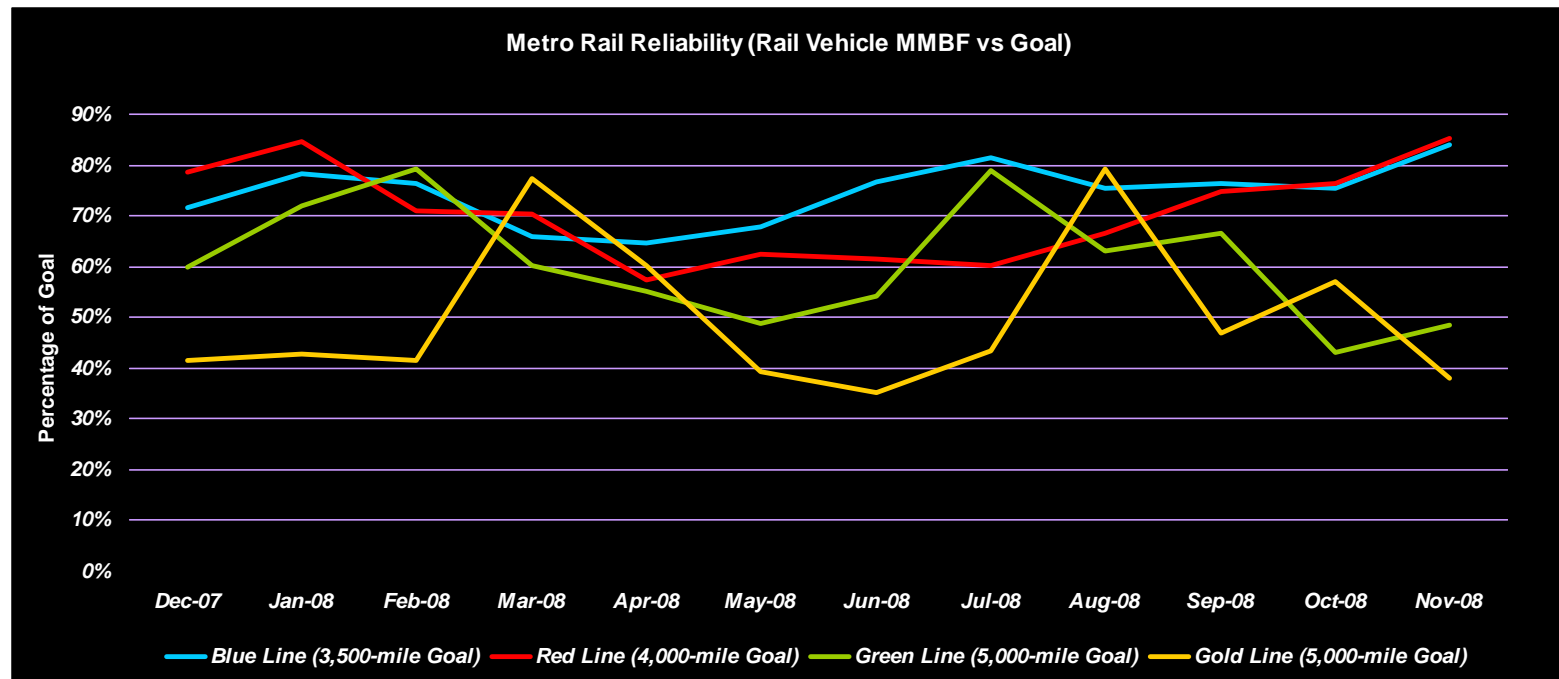
Repeater Car Details - November, 2008

System	Blue Line		Red Line		Green Line		Gold Line	
	Car #	No. of Repeats	Car #	No. of Repeats	Car #	No. of Repeats	Car #	No. of Repeats
Announcements			565	1				
ATO			535	1				
ATP	108	1	569	3				
	125	1						
Car Body					214	1		
CCTV			541	1				
Doors	100	1			208	1	245	1
	161	1			210	2		
	162	1			222	1		
Friction Brakes	110	1	539	2			711	1
			541	1				
HSCB			520	1				
HVAC	168	1					230	1
Low Air Pressure			561	2				
PA/Intercom			583	1	202	1		
Propulsion/Dynamic Brake	103	1	503	1	201	1	235	1
	124	2	508	1	205	2	238	1
	129	1	518	1	207	1	240	1
	131	1	528	1	209	1	241	2
			543	1	213	1	250	2
			550	1	217	3		
					221	1		
					223	1		
TOTALS	12		19		17		10	

Metro Rail Reliability

November 2008

	Dec-07	Jan-08	Feb-08	Mar-08	Apr-08	May-08	Jun-08	Jul-08	Aug-08	Sep-08	Oct-08	Nov-08
Blue Line Rail Vehicle Incidents	159	147	143	176	178	173	149	148	156	151	161	131
Blue Line Monthly Mileage	398,168	402,556	382,656	406,275	401,881	410,888	400,058	421,632	411,301	403,361	424,466	385,704
Blue Line MMBF	2,504	2,738	2,676	2,308	2,258	2,375	2,685	2,849	2,637	2,671	2,636	2,944
Blue Line (3,500-mile Goal)	72%	78%	76%	66%	65%	68%	77%	81%	75%	76%	75%	84%
Red Line Rail Vehicle Incidents	166	158	175	192	228	212	209	221	199	182	186	159
Red Line Monthly Mileage	521,889	535,220	496,907	539,274	524,452	528,698	513,141	532,394	529,268	544,302	569,212	542,756
Red/Purple Line MMBF	3,144	3,387	2,839	2,809	2,300	2,494	2,455	2,409	2,660	2,991	3,060	3,414
Red Line (4,000-mile Goal)	79%	85%	71%	70%	58%	62%	61%	60%	66%	75%	77%	85%
Green Line Rail Vehicle Incidents	72	62	53	73	79	90	78	55	68	68	110	90
Green Line Monthly Mileage	215,515	223,068	209,648	219,499	218,303	219,499	211,045	217,035	214,560	226,339	237,068	217,632
Green Line MMBF	2,993	3,598	3,956	3,007	2,763	2,439	2,706	3,946	3,155	3,329	2,155	2,418
Green Line (5,000-mile Goal)	60%	72%	79%	60%	55%	49%	54%	79%	63%	67%	43%	48%
Gold Line Rail Vehicle Incidents	69	73	69	39	49	76	83	70	38	63	54	82
Gold Line Monthly Mileage	142,976	155,907	143,185	151,044	147,591	149,693	146,598	152,075	150,466	147,380	154,222	155,276
Gold Line MMBF	2,072	2,136	2,075	3,873	3,012	1,970	1,766	2,173	3,960	2,339	2,856	1,894
Gold Line (5,000-mile Goal)	41%	43%	42%	77%	60%	39%	35%	43%	79%	47%	57%	38%

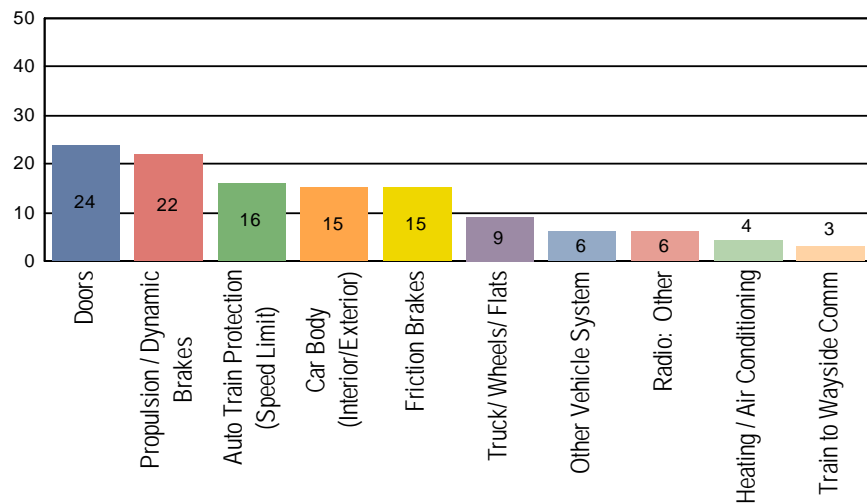


Incident Problems

November 2008

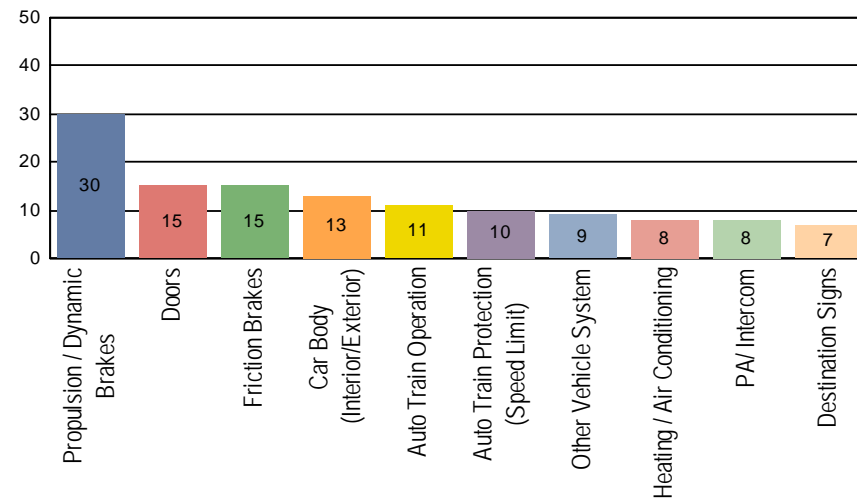
Blue Line

Count of the Top 10 Incident Problems



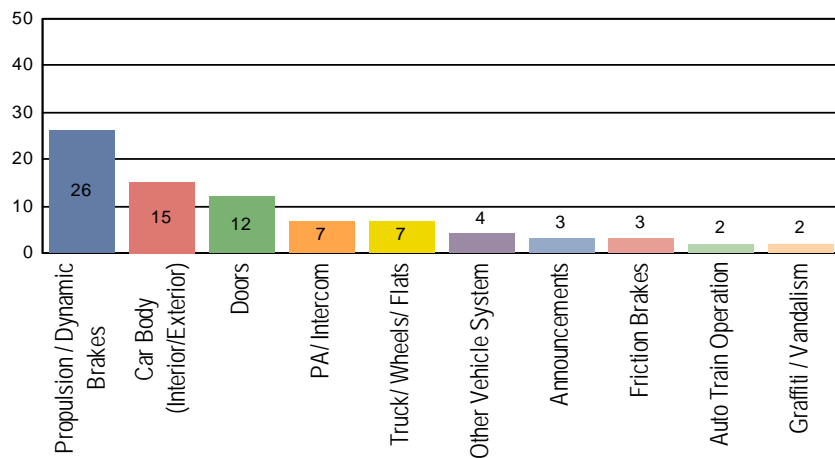
Red Line

Count of the Top 10 Incident Problems



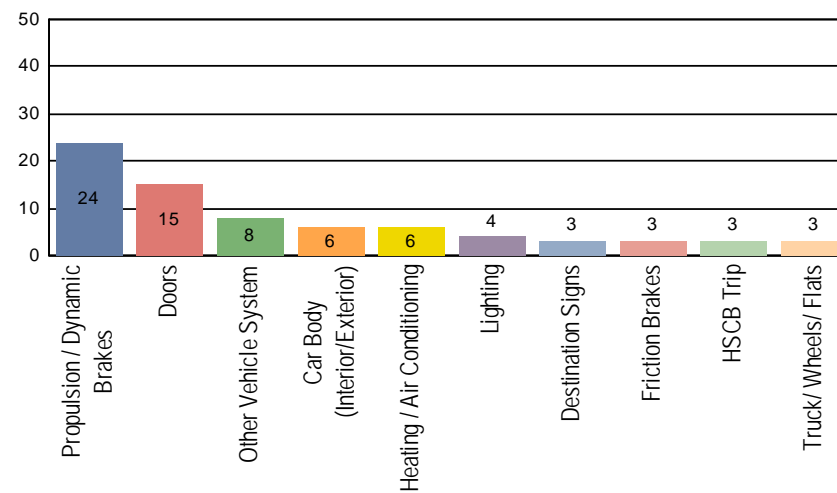
Green Line

Count of the Top 10 Incident Problems



Gold Line

Count of the Top 10 Incident Problems



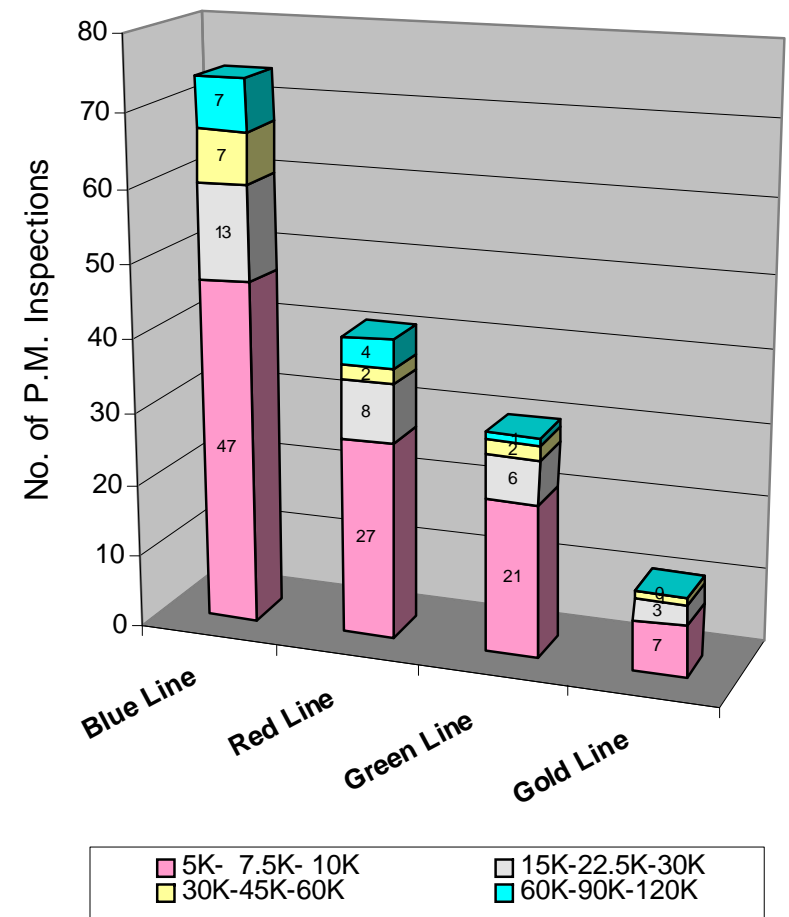
Preventative Maintenance Compliance

November 2008

Averages	Dec-07	Jan-08	Feb-08	Mar-08	Apr-08	May-08	Jun-08	Jul-08	Aug-08	Sep-08	Oct-08	Nov-08
Blue Line	100%	100%	100%	100%	100%	100%	97%	100%	100%	96%	100%	100%
Red Line	99%	100%	100%	100%	100%	100%	80%	100%	100%	100%	100%	100%
Green Line	100%	95%	100%	100%	100%	100%	100%	100%	100%	100%	100%	100%
Gold Line	100%	100%	100%	100%	100%	100%	100%	100%	100%	100%	100%	100%

November 2008 Preventative Maintenance Inspections

No. of P.M. Inspections	5K-7.5K-10K	15K-22.5K-30K	30K-45K-60K	60K-90K-120K	Totals	Percent Compliance
Blue Line	47	13	7	7	74	100%
Red Line	27	8	2	4	41	100%
Green Line	21	6	2	1	30	100%
Gold Line	7	3	1	0	11	100%
Totals:	102	30	12	12	156	100%

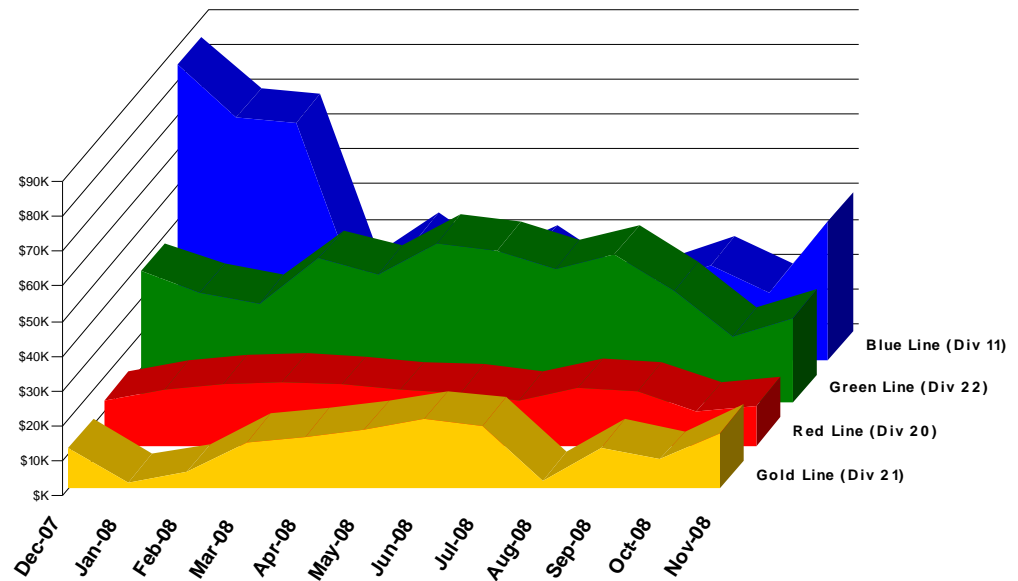


Vandalism & Graffiti Report

November 2008

	Dec-07	Jan-08	Feb-08	Mar-08	Apr-08	May-08	Jun-08	Jul-08	Aug-08	Sep-08	Oct-08	Nov-08	Year-to-Date
Blue Line (Div 11)	\$84K	\$69K	\$68K	\$22K	\$34K	\$22K	\$30K	\$19K	\$21K	\$27K	\$19K	\$40K	\$580K
Red Line (Div 20)	\$13K	\$16K	\$18K	\$18K	\$17K	\$16K	\$15K	\$13K	\$17K	\$16K	\$10K	\$11K	\$181K
Green Line (Div 22)	\$37K	\$32K	\$29K	\$41K	\$37K	\$46K	\$43K	\$38K	\$42K	\$32K	\$19K	\$24K	\$421K
Gold Line (Div 21)	\$12K	\$2K	\$5K	\$14K	\$15K	\$17K	\$20K	\$18K	\$2K	\$12K	\$8K	\$16K	\$140K
Totals:	\$147K	\$119K	\$119K	\$95K	\$103K	\$101K	\$109K	\$88K	\$83K	\$87K	\$56K	\$91K	\$1,198K

November 2008 Vandalism & Graffiti - All Rail				
	Qty	Labor	Materials	Totals
Windows replaced	79	\$7,119	\$14,381	\$ 21,500
Vandal Shields	413	\$9,471	\$9,400	\$ 18,871
Vandal Shields - Other	65	\$1,024	\$206	\$ 1,230
Seats Cleaned	8,851	\$20,978	\$0	\$ 20,978
Seats Replaced	80	\$2,520	\$3,430	\$ 5,950
Ext/Int Repairs	1,209	\$21,524	\$2,599	\$ 24,123
Totals for November 2008		\$62,635	\$30,016	\$ 92,651



Vandalism & Graffiti Pictures

November 2008



Metro Green Line



Metro Gold Line

Metro Blue Line

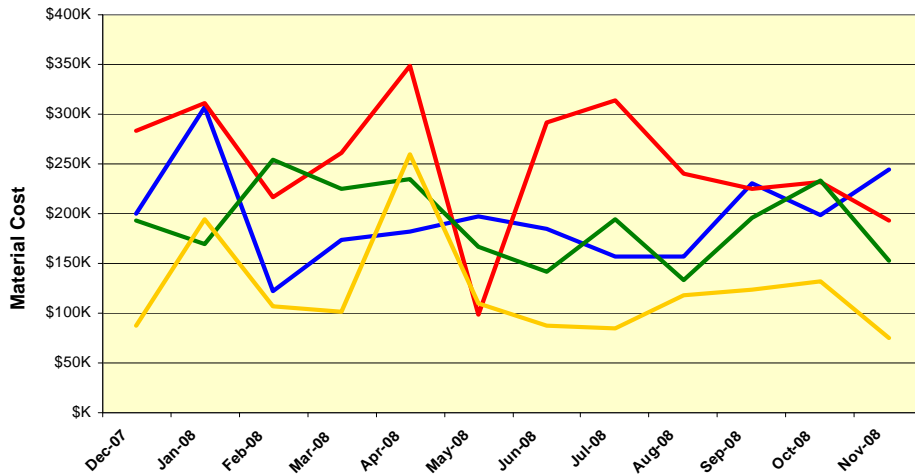


Material and Labor Costs

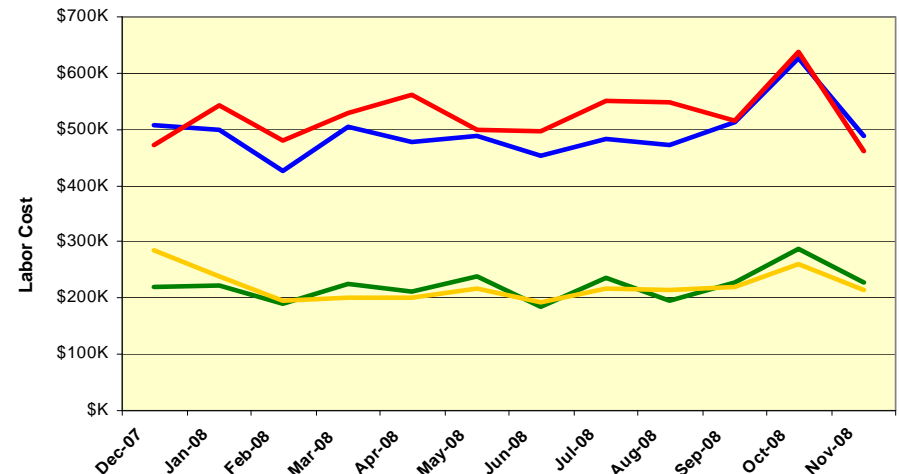
November 2008

MATERIALS	Dec-07	Jan-08	Feb-08	Mar-08	Apr-08	May-08	Jun-08	Jul-08	Aug-08	Sep-08	Oct-08	Nov-08
Blue Line	\$200K	\$307K	\$123K	\$174K	\$181K	\$197K	\$185K	\$156K	\$157K	\$230K	\$199K	\$244K
Red Line	\$283K	\$311K	\$217K	\$261K	\$349K	\$99K	\$292K	\$314K	\$240K	\$225K	\$232K	\$193K
Green Line	\$193K	\$169K	\$254K	\$225K	\$235K	\$166K	\$142K	\$194K	\$133K	\$195K	\$233K	\$153K
Gold Line	\$88K	\$195K	\$107K	\$101K	\$260K	\$110K	\$88K	\$85K	\$118K	\$123K	\$132K	\$74K
Totals	\$764K	\$981K	\$701K	\$761K	\$1,025K	\$572K	\$707K	\$750K	\$649K	\$774K	\$795K	\$665K

Material Costs



Labor Costs

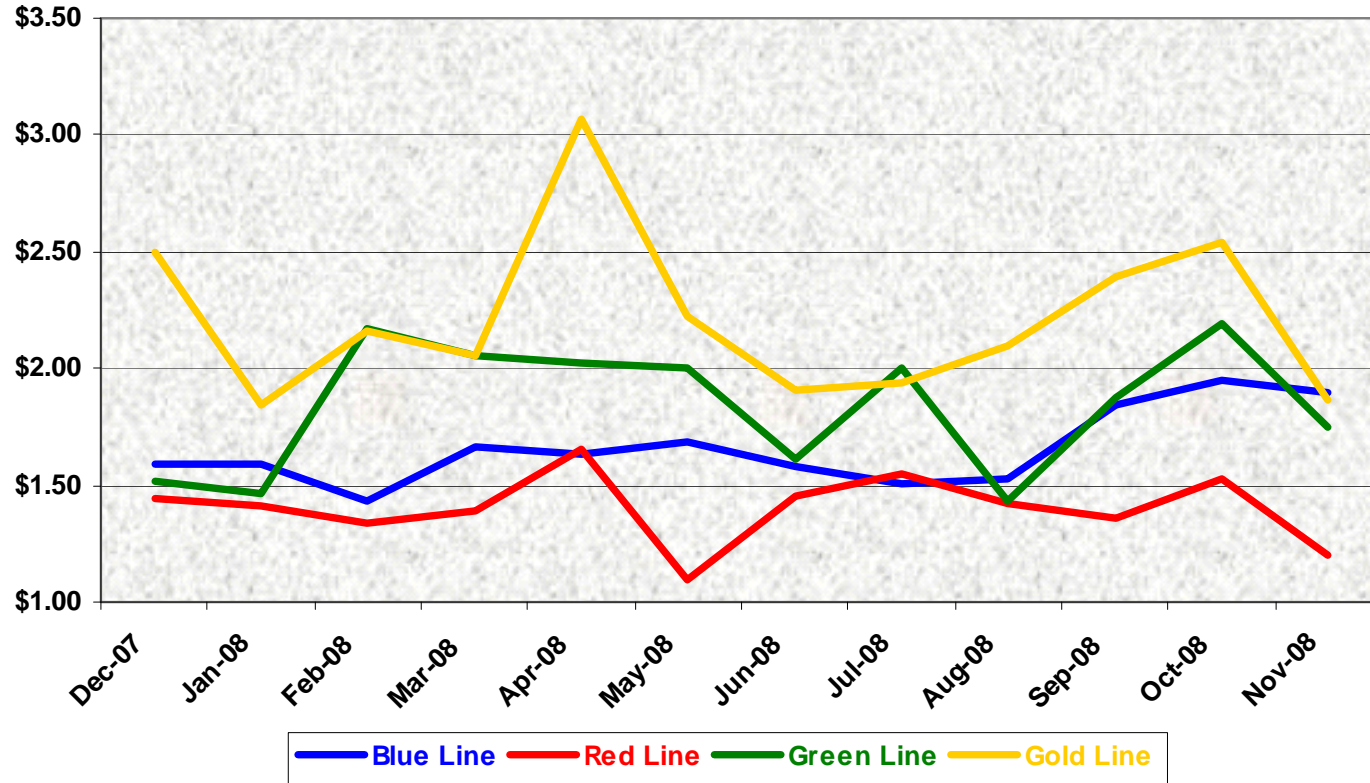


LABOR	Dec-07	Jan-08	Feb-08	Mar-08	Apr-08	May-08	Jun-08	Jul-08	Aug-08	Sep-08	Oct-08	Nov-08
Blue Line	\$508K	\$498K	\$426K	\$505K	\$479K	\$487K	\$454K	\$483K	\$473K	\$513K	\$628K	\$489K
Red Line	\$471K	\$542K	\$481K	\$530K	\$563K	\$498K	\$496K	\$549K	\$548K	\$516K	\$637K	\$460K
Green Line	\$220K	\$223K	\$190K	\$225K	\$211K	\$239K	\$184K	\$237K	\$196K	\$229K	\$287K	\$227K
Gold Line	\$285K	\$240K	\$196K	\$202K	\$202K	\$216K	\$192K	\$217K	\$214K	\$220K	\$260K	\$214K
Totals	\$1,484K	\$1,503K	\$1,293K	\$1,462K	\$1,454K	\$1,440K	\$1,326K	\$1,486K	\$1,431K	\$1,479K	\$1,812K	\$1,390K

Cost Per Mile

November 2008

Cost per mile:	Nov-07	Dec-07	Jan-08	Feb-08	Mar-08	Apr-08	May-08	Jun-08	Jul-08	Aug-08	Sep-08	Oct-08	Nov-08	Average
Blue Line	\$1.78	\$1.59	\$1.59	\$1.43	\$1.67	\$1.63	\$1.69	\$1.58	\$1.51	\$1.52	\$1.84	\$1.95	\$1.90	\$1.65
Red Line	\$1.41	\$1.44	\$1.41	\$1.33	\$1.39	\$1.65	\$1.10	\$1.45	\$1.55	\$1.42	\$1.36	\$1.53	\$1.20	\$1.42
Green Line	\$1.70	\$1.51	\$1.47	\$2.17	\$2.05	\$2.03	\$2.00	\$1.61	\$2.01	\$1.43	\$1.87	\$2.19	\$1.75	\$1.84
Gold Line	\$2.26	\$2.50	\$1.84	\$2.16	\$2.05	\$3.07	\$2.23	\$1.91	\$1.94	\$2.10	\$2.40	\$2.54	\$1.86	\$2.25



No facility costs are included

Absences vs. Overtime

November 2008

ABSENCE TYPE and HOURS	3940	3941	3942	3943	3944	Total
AWP-ABSENT W/O PERMISSION	0	8	0	0	0	8
BER-BEREAVEMENT	0	0	0	24	0	24
CTO-COMPENSATORY TIME OFF	20	174	128	146	96	564
CVA - CASUAL VACATION	32	8	904	80	64	1,088
DSL-DISABILITY LEAVE/LONG	0	264	336	128	328	1,056
EFH-EMG. FLOAT HOL.	0	8	32	48	0	88
ETO-EXCUSED TIME OFF	9	19	12	4	0	43
FML-FAMILY CARE LEAVE	0	160	744	66	16	986
HLF-HOLIDAY FLOATING	16	280	312	96	148	852
HNP-HOLIDAY NOT PAID	0	8	56	0	0	64
HOL-HOLIDAY LEGAL	48	560	448	144	152	1,352
JUR-JURY DUTY	0	16	8	16	0	40
LC1-LABOR CODE 233	16	136	101	101	8	362
LTI-OCCPIL/LONGTRM INJ LEAVE	0	328	328	0	0	656
MLN-MILITARY ABSENCE-UNPAID	0	0	0	16	0	16
RTO-REQUESTED TIME OFF-NO PAY	0	25	16	45	8	94
SCK-SICK PAY	0	168	174	55	24	420
SCW-SICK WITHOUT PAY	0	24	0	0	16	40
SUP-TEMPORARY SUPERVISOR	0	302	229	326	0	856
VAC-VACATION	24	475	72	248	249	1,068
Total	165	2,964	3,899	1,542	1,109	9,677



1 FTE = 2080 Hours/Year or
173.3 Hours Per Month

OVERTIME TYPE and HOURS	3940	3941	3942	3943	3944	Total
CTB-COMPENSATORY TIME TO BANK	0	211	110	53	89	463
OTP-PREM OVERTIME	194	535	952	499	378	2,557
WLO-WORKED LUNCH OVERTIME	0	9	74	10	3	96
Total	194	754	1,136	562	470	3,116

Uncovered Absences	3940	3941	3942	3943	3944	Total
Absences FTE	0.95	17.1	22.5	8.9	6.4	55.85
OTP FTE	1.1	4.4	6.6	3.2	2.7	18
FTE Difference	-0.15	12.7	15.9	5.7	3.7	37.85

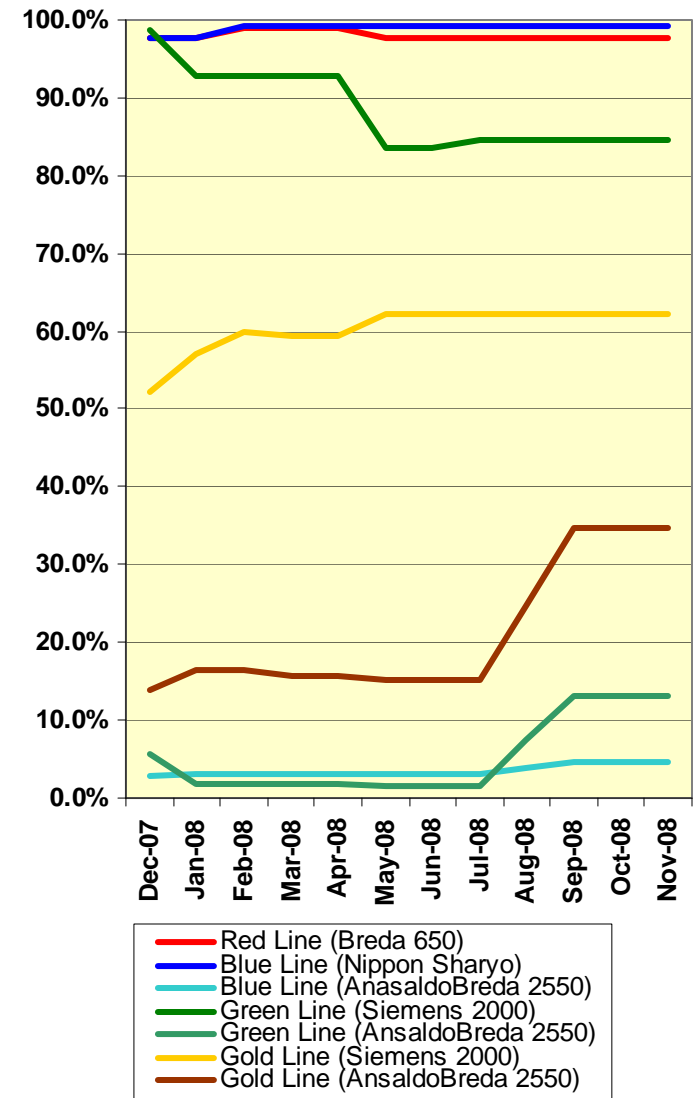
Rail Fleet Services Instruction

November 2008

Training classes completed during the month of November 2008

Description	Status	Start	End	Course Hours	Student Count	Training Hours
<u>Blue Line Training (Nippon Sharvo P865/P2020 LRV):</u>						
FALL PROTECTION	Complete	11/17/08	11/17/08	2	1	2
FORKLIFT CERTIFICATION	Complete	11/12/08	11/12/08	2	11	22
ETD STRESS MANAGEMENT	Complete	11/19/08	11/19/08	3	1	3
BACK SAFETY (Video)	Complete	11/17/08	11/17/08	2	3	6
FORKLIFT, OSHA REFRESHER	Complete	11/19/08	11/19/08	2	2	4
MOP SEXUAL HARASSMENT PREVENTION AND TITLE VII	Complete	11/24/08	11/24/08	2	1	2
BLOODBORNE PATHOGENS	Complete	11/18/08	11/18/08	2	2	4
Total Blue Line Training (Hours):						43
<u>Red Line Training (Breda A650 HRV):</u>						
WORD 2003 - BEGINNER	Complete	11/14/08	11/14/08	6	2	12
ETD STRESS MANAGEMENT	Complete	11/19/08	11/19/08	3	1	3
ETD PEOPLE SKILLS	Complete	11/26/08	11/26/08	3	1	3
MOP SEXUAL HARASSMENT PREVENTION AND TITLE VII	Complete	11/24/08	11/24/08	2	1	2
Total Red Line Training (Hours):						20
<u>Green Line Training (Siemens P2000 LRVs):</u>						
RFS SIMMONS WHEEL TRUE REFRESHER	Complete	11/1/08	11/13/08	24	4	96
Total Green Line Training (Hours):						96
<u>Gold Line Training (P2550 & P2000 LRVs):</u>						
MOP SEXUAL HARASSMENT PREVENTION AND TITLE VII	Complete	11/24/08	11/24/08	2	5	10
ETD STRESS MANAGEMENT	Complete	11/19/08	11/19/08	3	1	3
Total Gold Line Training (Hours):						13
Total Rail Fleet Services Instruction for the month of November 2008 (Hours):						172.0
<u>Core Vehicle Training Completed:</u>						
		BLUE	RED	GREEN	GOLD	
Percentage of core vehicle training complete:		99.2%	97.6%	84.7%	62.3%	
AnsaldoBreda 2550 Training Completed:		4.6%	N/A	13.1%	34.8%	
Average Specialist Rail Experience Level in Years:		10.0	8.3	7.3	7.0	

Core Training Completed



News Update: Blue Line Pantograph Entanglement, December 15, 2008



Damage to Overhead Contact wire from accident
(electricity burn because of poor contact)

