



Rail Fleet Services Monthly Report October 2008



Metro

Table of Contents

- Safety
 - Industrial Injuries Page 1
 - Rail Vehicle Accidents & Major Incidents Page 2
- Customer Service
 - Service Delivery – AM/PM Pull-Outs Page 3
 - Vehicle Utilization – Blue Line & Green Line Page 4
 - Vehicle Utilization – Red Line & Gold Line Page 5
 - Mean Miles Between Failures (Major) Page 6
 - Repeater Car Details Page 7
 - Metro Rail Reliability Page 8
- Business Processes
 - Incident Problems Page 9
 - Preventative Maintenance Compliance Page 10
- Finance
 - Vandalism & Graffiti Costs Page 11
 - Graffiti Pictures Page 12
 - Material & Labor Costs Page 13
 - Cost per mile Page 14
 - Capital Projects Page 15
- Growth
 - Rail Fleet Service Training Page 16
 - Retirement Age Rush Page 17

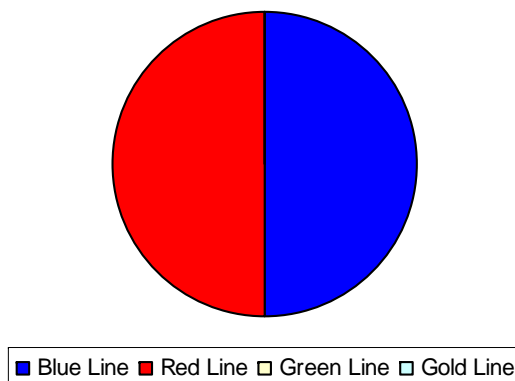
Industrial Injuries – Lost Work Hours

October 2008

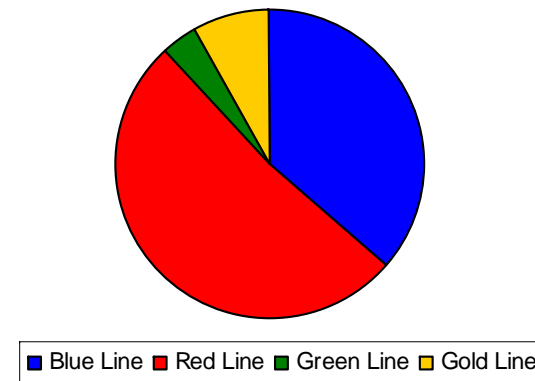
| | Nov-07 | Dec-07 | Jan-08 | Feb-08 | Mar-08 | Apr-08 | May-08 | Jun-08 | Jul-08 | Aug-08 | Sep-08 | Oct-08 | Year to Date |
|------------|--------|--------|--------|--------|--------|--------|--------|--------|--------|--------|--------|--------|--------------|
| Blue Line | 160 | 133 | 16 | 0 | 80 | 48 | 160 | 112 | 152 | 240 | 320 | 352 | 1,773 |
| Red Line | 152 | 0 | 0 | 184 | 80 | 48 | 368 | 344 | 344 | 392 | 264 | 352 | 2,528 |
| Green Line | 0 | 0 | 160 | 24 | 0 | 0 | 0 | 0 | 0 | 0 | 0 | 0 | 184 |
| Gold Line | 160 | 176 | 64 | 0 | 0 | 0 | 0 | 0 | 0 | 0 | 0 | 0 | 400 |
| Totals | 472 | 309 | 240 | 208 | 160 | 96 | 528 | 456 | 496 | 632 | 584 | 704 | 4,885 |

| | Employees | | October 2008 Lost Work Hours | | |
|---|-----------|--------|------------------------------|-------------------|--------------------------|
| | Assigned | Active | Service Attendant | Maint. Specialist | October 2008 Total Hours |
| Blue Line | 111 | 108 | 168 | 184 | 352 |
| Red Line | 109 | 102 | 352 | 0 | 352 |
| Green Line | 47 | 47 | 0 | 0 | 0 |
| Gold Line | 46 | 45 | 0 | 0 | 0 |
| Totals | 314 | 302 | 520 | 184 | 704 |
| Total Lost Work Hours for 12-months = 4,885 hours | | | | | |

October 2008 - Lost Work Hours



Year-to-Date Lost Work Hours



Rail Vehicle Accidents & Major Incidents

October 2008

| | Nov-07 | Dec-07 | Jan-08 | Feb-08 | Mar-08 | Apr-08 | May-08 | Jun-08 | Jul-08 | Aug-08 | Sep-08 | Oct-08 | Totals |
|-------------------|-----------------|----------------|----------------|-----------------|----------------|----------------|----------------|----------------|-----------------|-----------------|-----------------|----------------|------------------|
| Blue Line | \$4,661 | \$4,489 | \$8,500 | \$497 | \$4,235 | \$1,789 | \$2,473 | \$1,412 | \$14,603 | \$7,308 | \$55,579 | \$1,672 | \$107,218 |
| Red Line | \$203 | \$0 | \$0 | \$0 | \$274 | \$0 | \$0 | \$418 | \$0 | \$3,127 | \$0 | \$0 | \$4,022 |
| Green Line | \$6,036 | \$0 | \$0 | \$289 | \$0 | \$0 | \$0 | \$0 | \$0 | \$0 | \$15,758 | \$0 | \$22,083 |
| Gold Line | \$0 | \$326 | \$340 | \$18,388 | \$0 | \$0 | \$0 | \$0 | \$0 | \$3,504 | \$0 | \$0 | \$22,558 |
| Totals | \$10,900 | \$4,815 | \$8,840 | \$19,174 | \$4,509 | \$1,789 | \$2,473 | \$1,830 | \$14,603 | \$13,939 | \$71,337 | \$1,672 | \$155,881 |

| Rail Vehicle Accident Costs - October, 2008 | | | |
|---|----------------------|--|----------------|
| 2008 | Problem code | Incident Description | Cost |
| October 4 | Train vs. Pedestrian | Train #2 T-136 reports alleged 10-72 at Grand Station Northbound on track #1. Car #(127)-141-106 | \$0 |
| October 16 | Train vs. Others | Train vs. Wheelchair. Operator clipped WC patron's backpack. T-28 Train #13 LRV (137B) 152 160 Wardlow Ped Xing, Track #1, northbound | \$189 |
| October 19 | Train vs. Auto | T-265, train 1, 10-73 Train vs. "hit & run auto" at Long Beach and 10th | \$584 |
| October 24 | Train vs. Other | Right windshield cracked. T-132 north of Florence grade crossing, track 1 Car (102A)-117-157 - Operator error - ran through a down gate. | \$899 |
| Blue Line Total Repair Cost | | | \$1,672 |
| No accidents for Red, Green & Gold Lines | | | |

The monthly accident charges listed represent only the expenses incurred in that particular month and are not a total repair of an individual accident.

Service Delivery – AM/PM Pull-Outs

October 2008

Cars Available for AM/PM Pull-Outs

Blue Line – Fleet Size 69 cars

- Weekday pull-out: 60 cars
- Weekend pull-out: 36 cars
- **Monthly Mileage: 424,466 miles**

Red Line - Fleet Size 104 cars

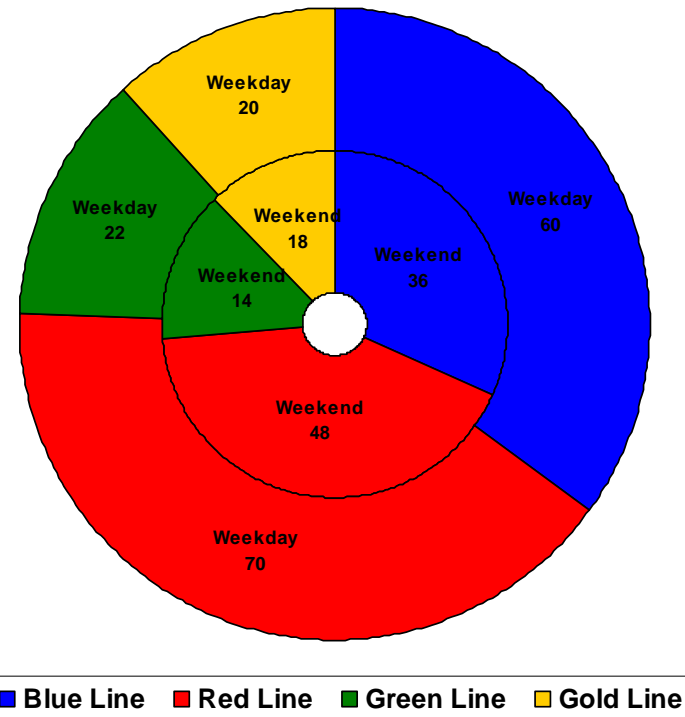
- Weekday pull-out: 70 cars
- Weekend pull-out: 48 cars
- **Monthly Mileage: 569,212 miles**

Green Line – Fleet Size 28 cars

- Weekday pull-out: 22 cars
- Weekend pull-out: 14 cars
- **Monthly Mileage: 237,068 miles**

Gold Line – Fleet Size 24 cars

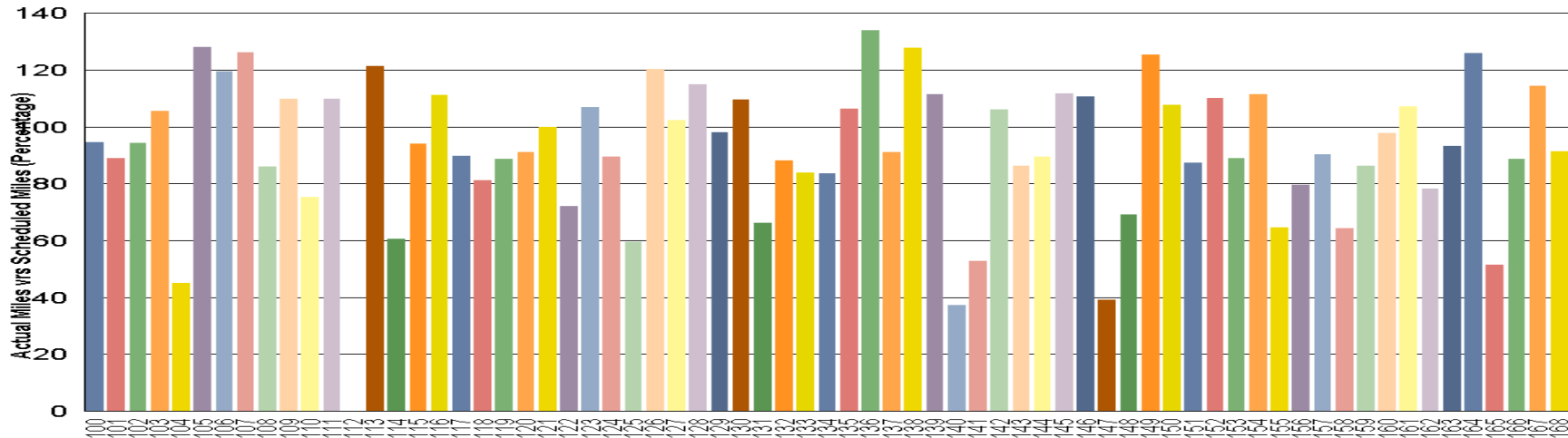
- Weekday pull-out: 20 cars
- Weekend pull-out: 18 cars
- **Monthly Mileage: 154,222 miles**



VEHICLE UTILIZATION

October 1, 2008 to October 31, 2008

Blue Line

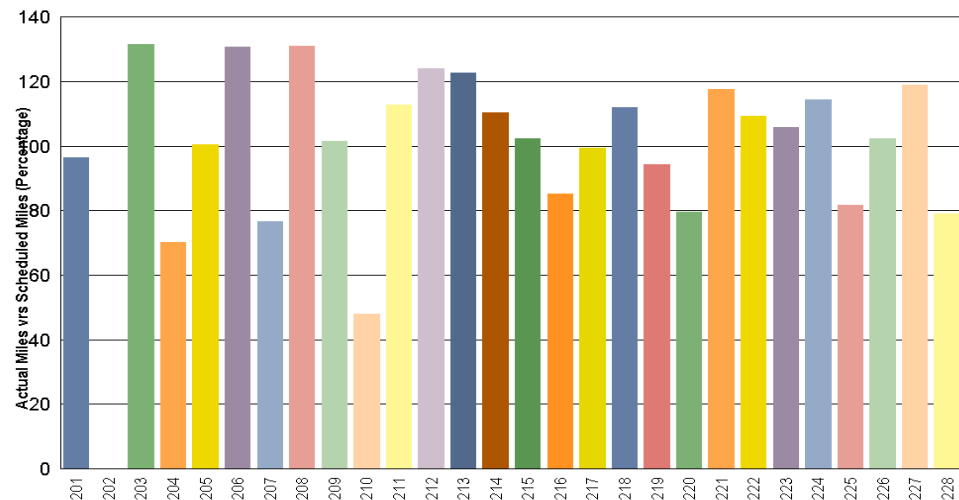


Blue Line - Car 112 is out of service for repair due to an accident on 9-19-08 (Bus vs. train).

Green Line - Car 202 is out of service for paint repair and rust damage repair around windows.

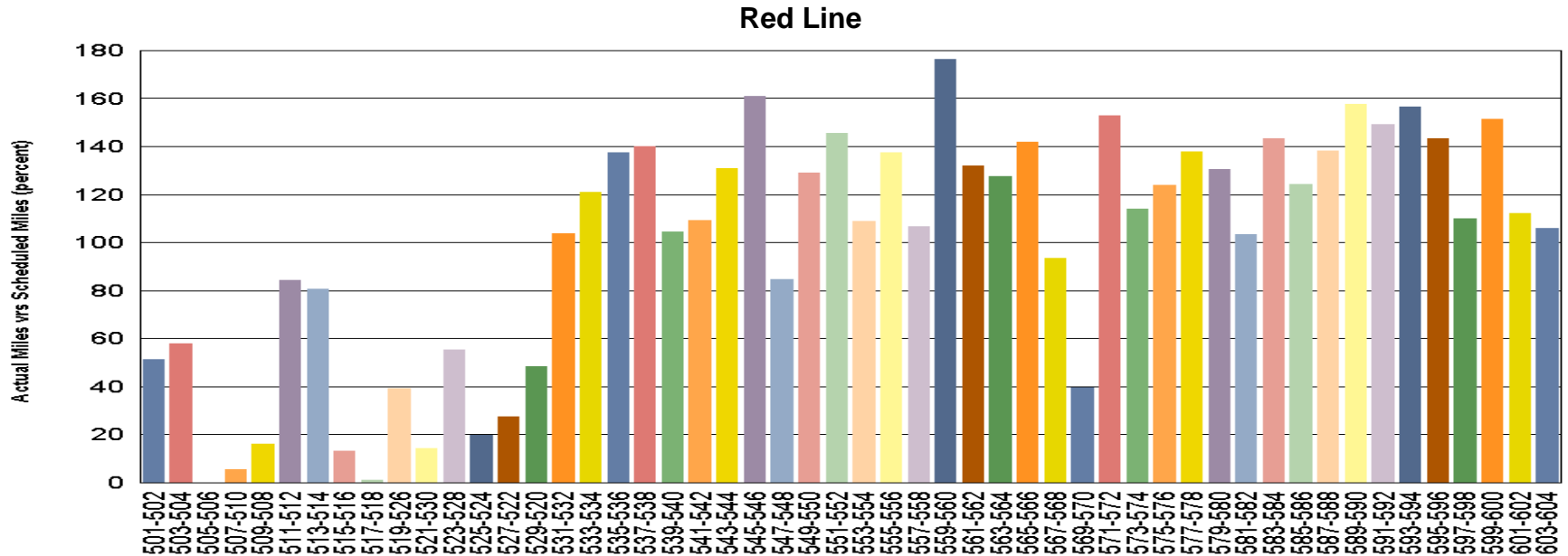
Percentage includes an average 4% mileage deduction for Yard mileage and Vehicle Testing.

Green Line



VEHICLE UTILIZATION

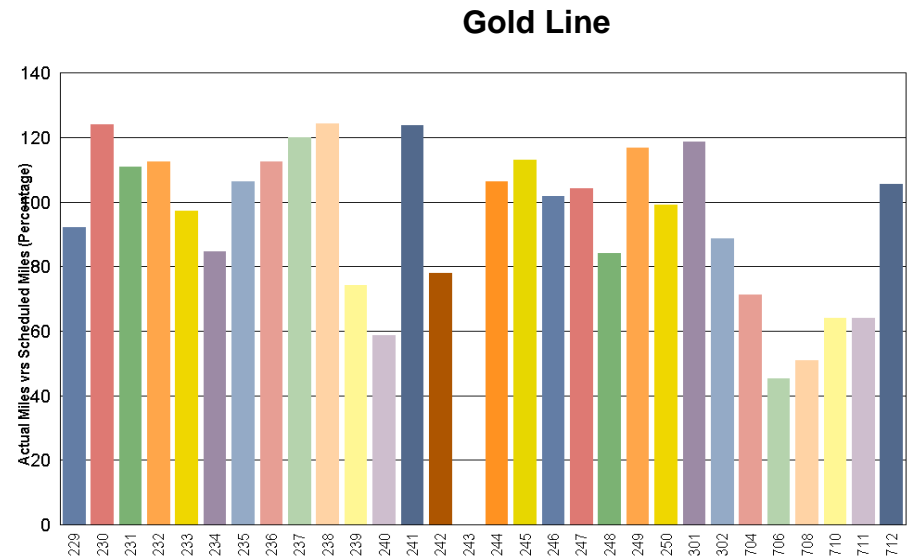
October 1, 2008 to October 31, 2008



Red Line - The original 30 Base Buy cars are not being used to their fullest potential so the remaining Option Buy cars are forced to pick up the slack. Car 569-570 is experiencing complicated ATP problems.

Gold Line - Car 243 is in Sacramento having its fire damage repaired and the AnsaldoBreda cars are having some teething problems.

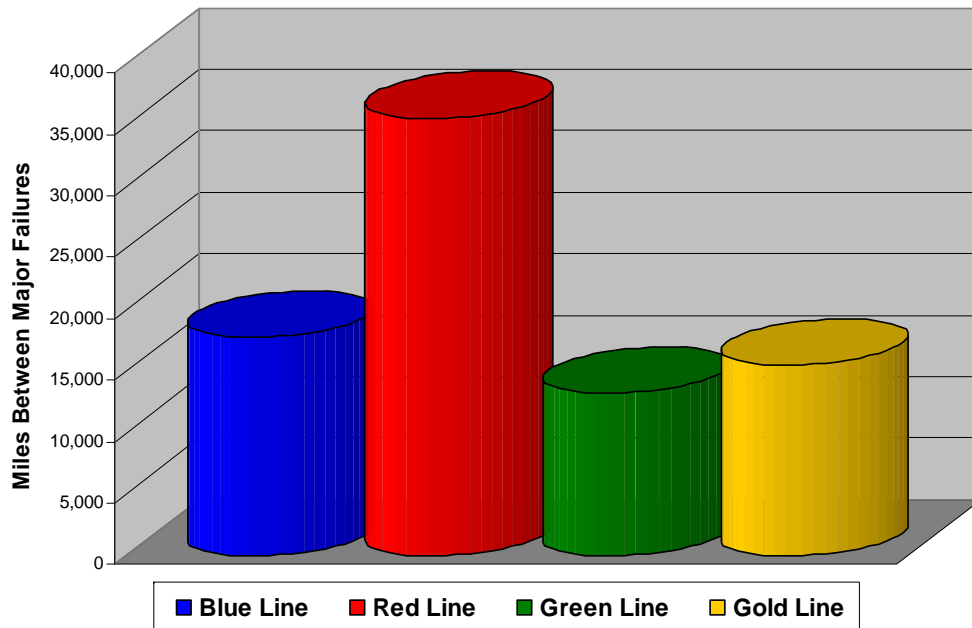
Percentage includes an average 4% mileage deduction for Yard mileage and Vehicle Testing



Mean Miles Between Failures (Major) October 2008

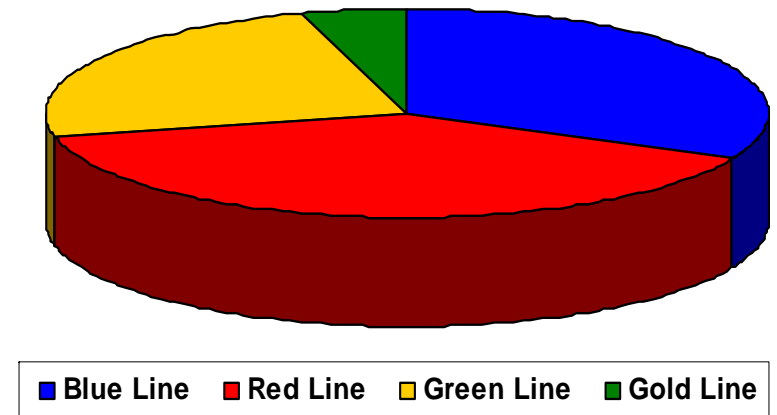
Major Failures

Blue Line: 17,686 miles (24 Major Failures)
Red Line: 35,576 miles (16 Major Failures)
Green Line: 13,170 miles (18 Major Failures)
Gold Line: 15,422 miles (10 Major Failures)



Repeat Failures

Blue Line: 27 Repeat Failures
Red Line: 33 Repeat Failures
Green Line: 20 Repeat Failures
Gold Line: 4 Repeat Failures



Major Failure: When a train does not complete its scheduled run or is more than 5 minutes late of its scheduled arrival time.

Repeater Car Details

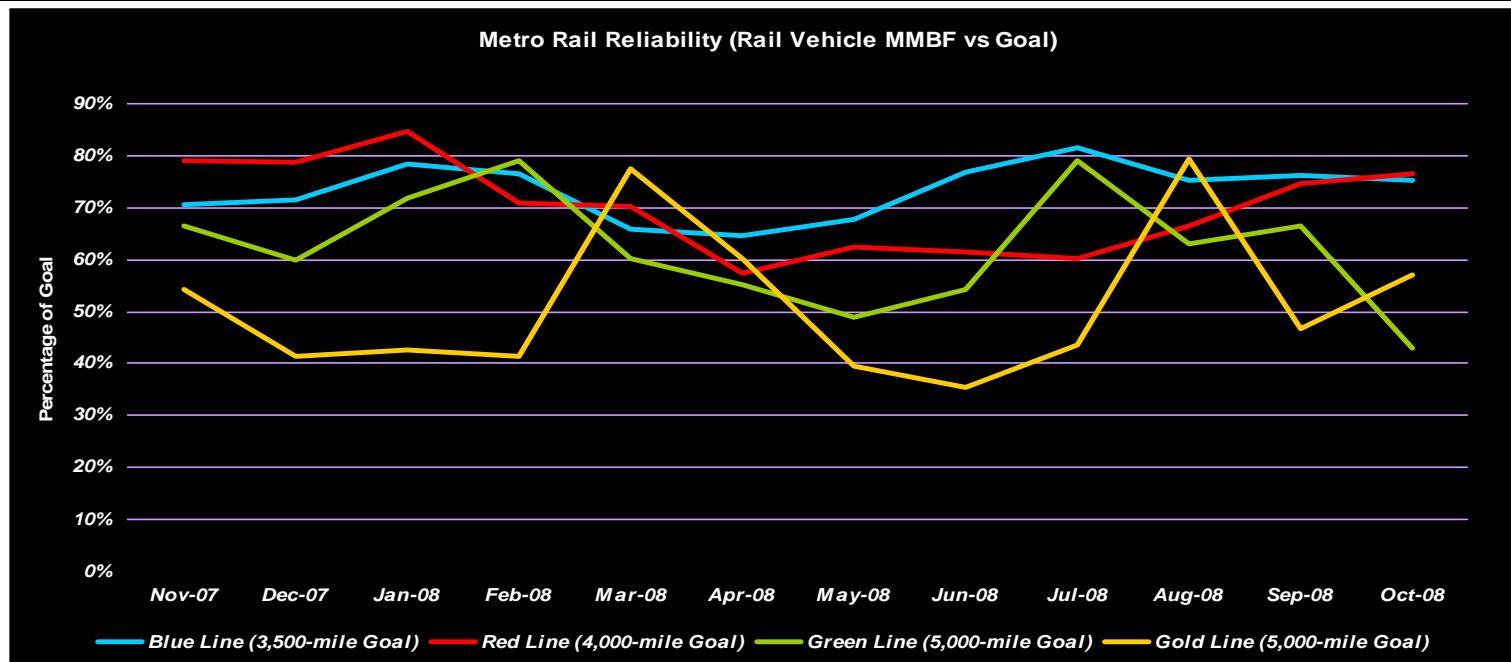
October 2008

| System | Blue Line | | Red Line | | Green Line | | Gold Line | |
|--------------------------|---------------------------------|-----------------------|--------------------------|------------------|---|---------------------------------|-----------|----------------|
| | Car # | No. of Repeats | Car # | No. of Repeats | Car # | No. of Repeats | Car # | No. of Repeats |
| Announcements | 159 | 1 | | | | | | |
| ATO | | | | | 203 | 1 | | |
| ATP | 101 141 157 | 1 4 1 | 547 570 596 | 1 3 2 | | | | |
| ATP (Overspeed) | | | 569 | 1 | | | | |
| Auxiliary Power | | | 516 520 | 1 1 | | | | |
| Berthing | | | 566 | 1 | | | | |
| Doors | 100 104 148 153 159 | 1 1 4 2 1 | 542 575 | 1 4 | | | 301 | 2 |
| Friction Brakes | 114 118 155 | 1 2 1 | 581 | 2 | | | 711 | 1 |
| HSCB | | | 508 520 | 1 1 | | | | |
| HVAC | | | 522 550 573 576 | 1 1 1 2 | 207 | 1 | 229 | 1 |
| Lighting | 159 | 1 | | | | | | |
| Low Air Pressure | | | | | 219 | 1 | | |
| Propulsion/Dynamic Brake | 134 147 153 | 1 1 1 | 519 520 525 530 | 2 2 1 1 | 207 210 211 217 218 219 221 | 1 5 1 2 1 1 3 | | |
| Other | | | 527 | 1 | | | | |
| TICU | | | 547 565 | 1 1 | | | | |
| PA/Intercom | | | | | 208 | 1 | | |
| Radio | 105 128 | 1 2 | | | | | | |
| Trucks/Wheels/Flats | | | | | 204 228 | 1 1 | | |
| TOTALS | 27 | | 33 | | 20 | | 4 | |

Metro Rail Reliability

October 2008

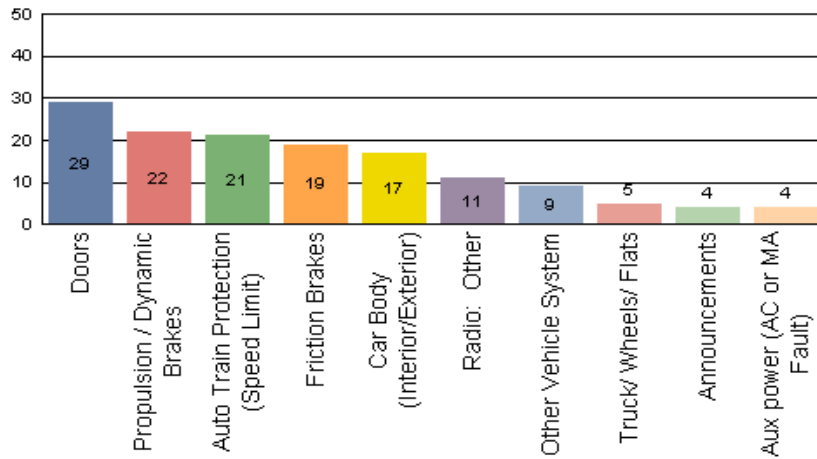
| | Nov-07 | Dec-07 | Jan-08 | Feb-08 | Mar-08 | Apr-08 | May-08 | Jun-08 | Jul-08 | Aug-08 | Sep-08 | Oct-08 |
|-----------------------------------|---------|---------|---------|---------|---------|---------|---------|---------|---------|---------|---------|---------|
| Blue Line Rail Vehicle Incidents | 161 | 159 | 147 | 143 | 176 | 178 | 173 | 149 | 148 | 156 | 151 | 161 |
| Blue Line Monthly Mileage | 396,981 | 398,168 | 402,556 | 382,656 | 406,275 | 401,881 | 410,888 | 400,058 | 421,632 | 411,301 | 403,361 | 424,466 |
| Blue Line MMBF | 2,466 | 2,504 | 2,738 | 2,676 | 2,308 | 2,258 | 2,375 | 2,685 | 2,849 | 2,637 | 2,671 | 2,636 |
| Blue Line (3,500-mile Goal) | 70% | 72% | 78% | 76% | 66% | 65% | 68% | 77% | 81% | 75% | 76% | 75% |
| Red Line Rail Vehicle Incidents | 163 | 166 | 158 | 175 | 192 | 228 | 212 | 209 | 221 | 199 | 182 | 186 |
| Red Line Monthly Mileage | 515,266 | 521,889 | 535,220 | 496,907 | 539,274 | 524,452 | 528,698 | 513,141 | 532,394 | 529,268 | 544,302 | 569,212 |
| Red/Purple Line MMBF | 3,161 | 3,144 | 3,387 | 2,839 | 2,809 | 2,300 | 2,494 | 2,455 | 2,409 | 2,660 | 2,991 | 3,060 |
| Red Line (4,000-mile Goal) | 79% | 79% | 85% | 71% | 70% | 58% | 62% | 61% | 60% | 66% | 75% | 77% |
| Green Line Rail Vehicle Incidents | 64 | 72 | 62 | 53 | 73 | 79 | 90 | 78 | 55 | 68 | 68 | 110 |
| Green Line Monthly Mileage | 212,749 | 215,515 | 223,068 | 209,648 | 219,499 | 218,303 | 219,499 | 211,045 | 217,035 | 214,560 | 226,339 | 237,068 |
| Green Line MMBF | 3,324 | 2,993 | 3,598 | 3,956 | 3,007 | 2,763 | 2,439 | 2,706 | 3,946 | 3,155 | 3,329 | 2,155 |
| Green Line (5,000-mile Goal) | 66% | 60% | 72% | 79% | 60% | 55% | 49% | 54% | 79% | 63% | 67% | 43% |
| Gold Line Rail Vehicle Incidents | 50 | 69 | 73 | 69 | 39 | 49 | 76 | 83 | 70 | 38 | 63 | 54 |
| Gold Line Monthly Mileage | 135,554 | 142,976 | 155,907 | 143,185 | 151,044 | 147,591 | 149,693 | 146,598 | 152,075 | 150,466 | 147,380 | 154,222 |
| Gold Line MMBF | 2,711 | 2,072 | 2,136 | 2,075 | 3,873 | 3,012 | 1,970 | 1,766 | 2,173 | 3,960 | 2,339 | 2,856 |
| Gold Line (5,000-mile Goal) | 54% | 41% | 43% | 42% | 77% | 60% | 39% | 35% | 43% | 79% | 47% | 57% |



Incident Problems

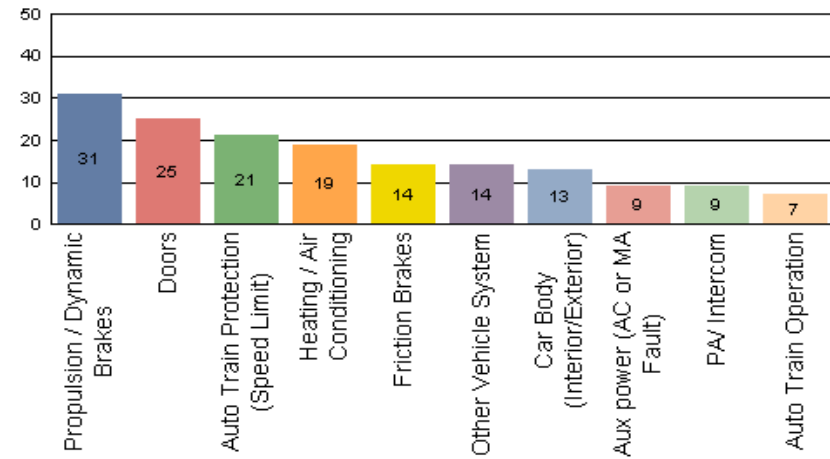
Blue Line – October 2008

Count of the Top 10 Incident Problems



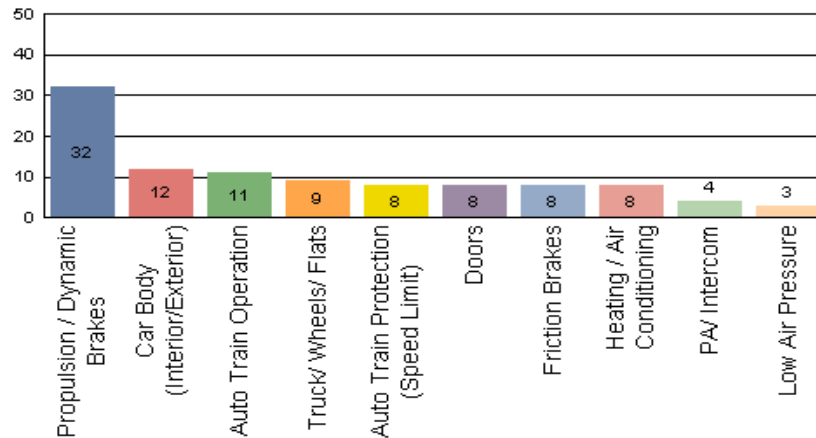
Red Line – October 2008

Count of the Top 10 Incident Problems



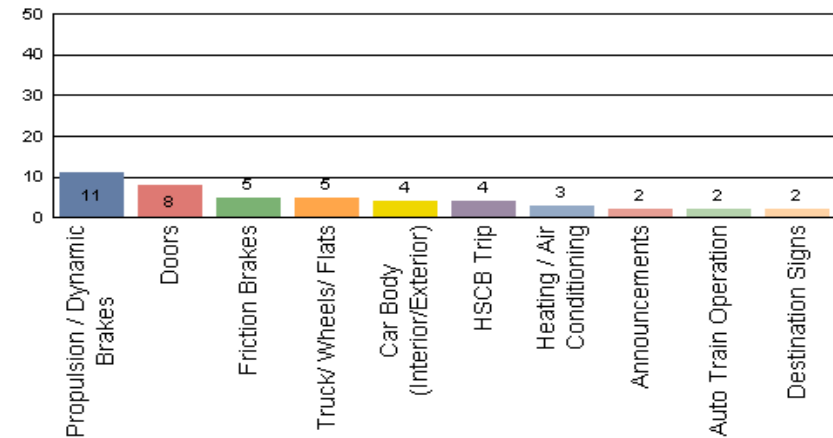
Green Line - October 2008

Count of the Top 10 Incident Problems



Gold Line - October 2008

Count of the Top 10 Incident Problems



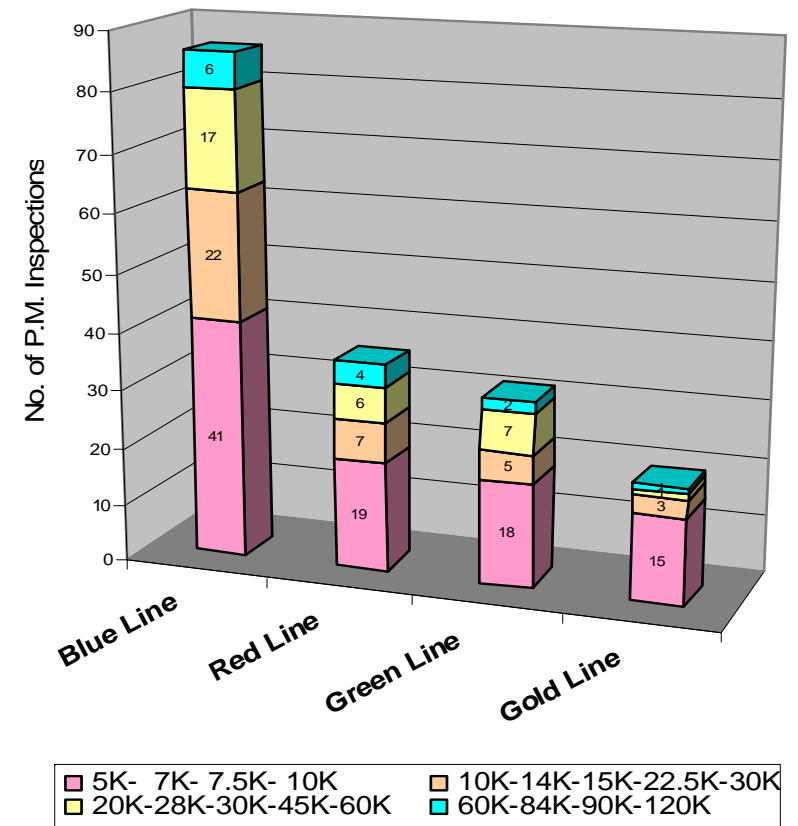
Preventative Maintenance Compliance

October 2008

| | Nov-07 | Dec-07 | Jan-08 | Feb-08 | Mar-08 | Apr-08 | May-08 | Jun-08 | Jul-08 | Aug-08 | Sep-08 | Oct-08 |
|-------------------|--------|--------|--------|--------|--------|--------|--------|--------|--------|--------|--------|--------|
| Blue Line | 100% | 100% | 100% | 100% | 100% | 100% | 100% | 97% | 100% | 100% | 96% | 100% |
| Red Line | 100% | 99% | 100% | 100% | 100% | 100% | 100% | 80% | 100% | 100% | 100% | 100% |
| Green Line | 100% | 100% | 95% | 100% | 100% | 100% | 100% | 100% | 100% | 100% | 100% | 100% |
| Gold Line | 100% | 100% | 100% | 100% | 100% | 100% | 100% | 100% | 100% | 100% | 100% | 100% |

October 2008 Preventative Maintenance Inspections

| No. of P.M. Inspections | 5K-7K-7.5K-10K | 10K-14K-15K-22.5K-30K | 20K-28K-30K-45K-60K | 60K-84K-90K-120K | Totals | Percent Compliance |
|-------------------------|----------------|-----------------------|---------------------|------------------|--------|--------------------|
| Blue Line | 41 | 22 | 17 | 6 | 86 | 100% |
| Red Line | 19 | 7 | 6 | 4 | 36 | 100% |
| Green Line | 18 | 5 | 7 | 2 | 32 | 100% |
| Gold Line | 15 | 3 | 1 | 1 | 20 | 100% |
| Totals: | 93 | 37 | 31 | 13 | 174 | 100% |

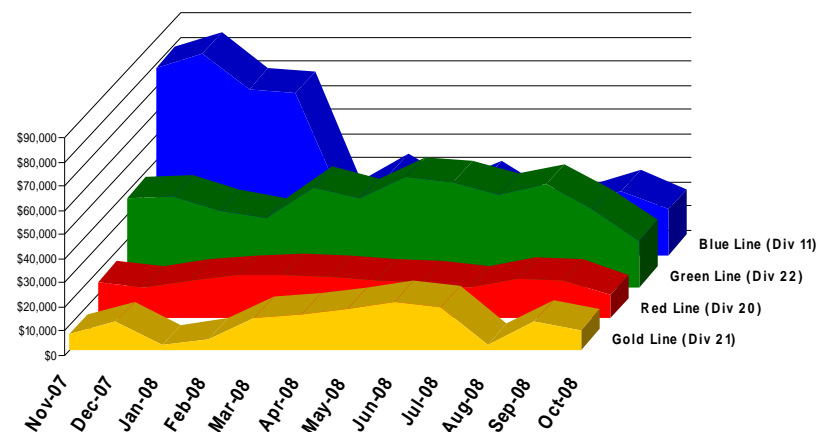


Vandalism & Graffiti Report

October 2008

| | Nov-07 | Dec-07 | Jan-08 | Feb-08 | Mar-08 | Apr-08 | May-08 | Jun-08 | Jul-08 | Aug-08 | Sep-08 | Oct-08 | Year-to-Date |
|------------|-----------|-----------|-----------|-----------|-----------|-----------|-----------|-----------|----------|----------|----------|----------|--------------|
| Blue Line | \$78,067 | \$84,209 | \$69,383 | \$67,624 | \$27,270 | \$33,717 | \$22,258 | \$30,483 | \$19,055 | \$21,297 | \$27,169 | \$19,172 | \$499,704 |
| Green Line | \$37,022 | \$37,495 | \$31,632 | \$28,564 | \$41,259 | \$36,670 | \$45,594 | \$43,424 | \$38,306 | \$42,483 | \$31,715 | \$19,070 | \$433,234 |
| Red Line | \$15,156 | \$13,231 | \$16,100 | \$17,874 | \$18,388 | \$17,477 | \$15,881 | \$15,127 | \$13,153 | \$16,728 | \$15,743 | \$9,744 | \$184,602 |
| Gold Line | \$6,416 | \$11,638 | \$2,030 | \$4,715 | \$13,544 | \$14,864 | \$17,174 | \$19,888 | \$17,978 | \$2,372 | \$11,825 | \$8,344 | \$130,788 |
| Totals | \$136,661 | \$146,573 | \$119,145 | \$118,777 | \$100,461 | \$102,728 | \$100,907 | \$108,922 | \$88,492 | \$82,880 | \$86,452 | \$56,330 | \$1,248,328 |

| October 2008 Vandalism & Graffiti - All Rail | | | | |
|--|-------|----------|-----------|-----------|
| | Qty | Labor | Materials | Totals |
| Windows replaced | 23 | \$2,142 | \$3,817 | \$ 5,959 |
| Vandal Shields | 403 | \$9,246 | \$6,640 | \$ 15,886 |
| Vandal Shields - Other | 31 | \$488 | \$206 | \$694 |
| Seats Cleaned | 9,352 | \$22,526 | \$ - | \$ 22,526 |
| Seats Replaced | 83 | \$2,615 | \$3,955 | \$ 6,570 |
| Ext/Int Repairs | 936 | \$3,431 | | \$ 3,431 |
| Labor | 16 | \$1,008 | \$256 | \$ 1,264 |
| Totals for October 2008 | | \$41,456 | \$14,874 | \$ 56,330 |



Vandalism & Graffiti Pictures

October 2008



A

B

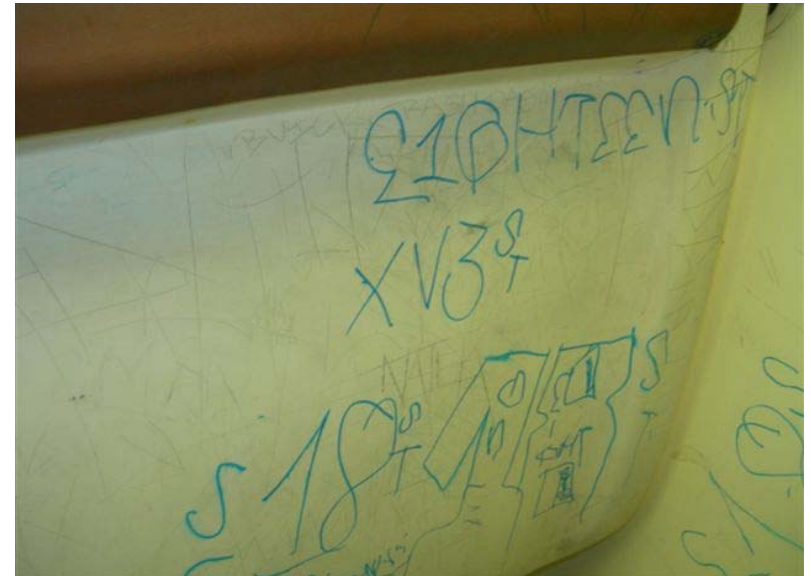
C



A - Green Line

B - Blue Line

C - Red Line

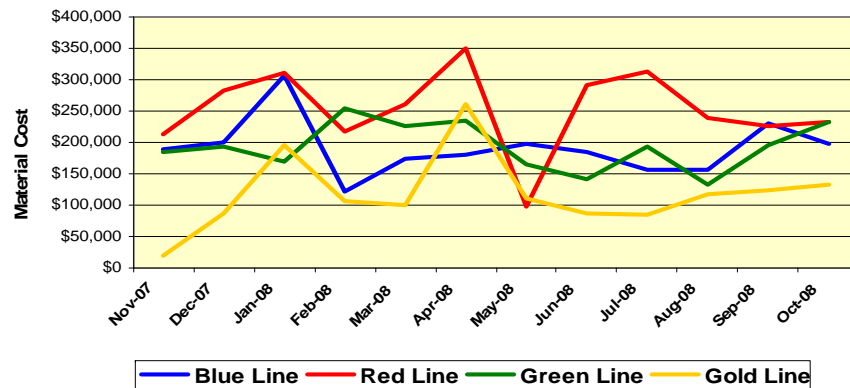


Material and Labor Costs

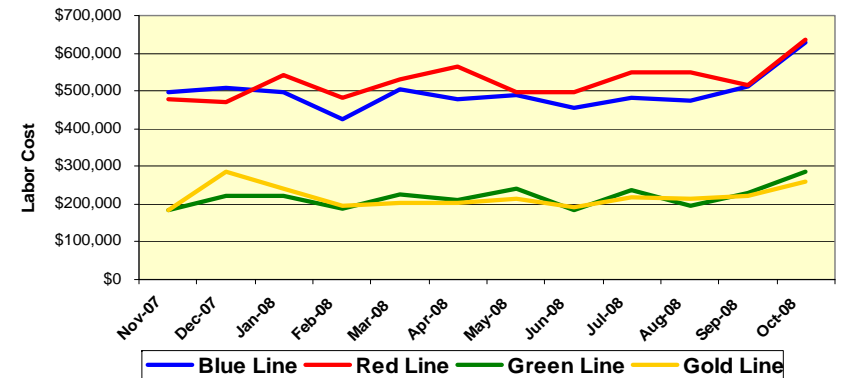
October 2008

| Material Costs | Nov-07 | Dec-07 | Jan-08 | Feb-08 | Mar-08 | Apr-08 | May-08 | Jun-08 | Jul-08 | Aug-08 | Sep-08 | Oct-08 |
|----------------|--------|--------|--------|--------|--------|----------|--------|--------|--------|--------|--------|--------|
| Blue Line | \$189K | \$200K | \$307K | \$123K | \$174K | \$181K | \$197K | \$185K | \$157K | \$157K | \$230K | \$199K |
| Red Line | \$212K | \$283K | \$311K | \$217K | \$261K | \$349K | \$ 99K | \$292K | \$314K | \$240K | \$225K | \$232K |
| Green Line | \$185K | \$132K | \$169K | \$254K | \$225K | \$235K | \$166K | \$142K | \$194K | \$133K | \$196K | \$233K |
| Gold Line | \$19K | \$154K | \$195K | \$107K | \$101K | \$260K | \$110K | \$88K | \$85K | \$118K | \$123K | \$132K |
| Totals | \$559K | \$768K | \$982K | \$701K | \$761K | \$1,052K | \$572K | \$707K | \$750K | \$648K | \$774K | \$796K |

Material Costs



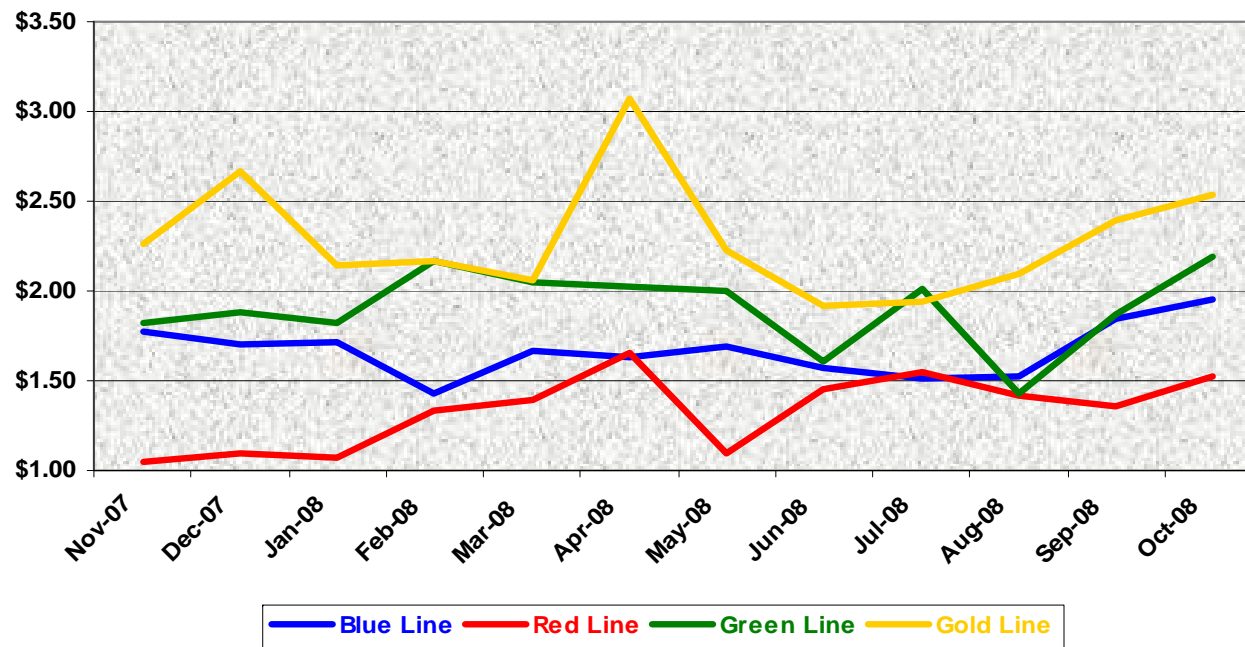
Labor Costs



| Labor Costs | Nov-07 | Dec-07 | Jan-08 | Feb-08 | Mar-08 | Apr-08 | May-08 | Jun-08 | Jul-08 | Aug-08 | Sep-08 | Oct-08 |
|-------------|----------|----------|----------|----------|----------|----------|----------|----------|----------|----------|----------|----------|
| Blue Line | \$496K | \$508K | \$498K | \$426K | \$505K | \$479K | \$487K | \$454K | \$483K | \$473K | \$513K | \$628K |
| Red Line | \$479K | \$471K | \$542K | \$481K | \$530K | \$563K | \$498K | \$496K | \$549K | \$548K | \$516K | \$637K |
| Green Line | \$185K | \$220K | \$223K | \$190K | \$225K | \$211K | \$239K | \$184K | \$237K | \$196K | \$229K | \$287K |
| Gold Line | \$186K | \$235K | \$240K | \$196K | \$222K | \$202K | \$216K | \$192K | \$217K | \$214K | \$220K | \$260K |
| Totals | \$1,346K | \$1,484K | \$1,503K | \$1,293K | \$1,482K | \$1,454K | \$1,440K | \$1,326K | \$1,486K | \$1,431K | \$1,478K | \$1,812K |

Cost Per Mile October 2008

| Cost per mile: | Nov-07 | Dec-07 | Jan-08 | Feb-08 | Mar-08 | Apr-08 | May-08 | Jun-08 | Jul-08 | Aug-08 | Sep-08 | Oct-08 | Average |
|----------------|--------|--------|--------|--------|--------|--------|--------|--------|--------|--------|--------|--------|---------|
| Blue Line | \$1.78 | \$1.70 | \$1.71 | \$1.43 | \$1.67 | \$1.63 | \$1.69 | \$1.58 | \$1.51 | \$1.52 | \$1.84 | \$1.95 | \$1.66 |
| Red Line | \$1.05 | \$1.09 | \$1.07 | \$1.33 | \$1.39 | \$1.65 | \$1.10 | \$1.45 | \$1.55 | \$1.42 | \$1.36 | \$1.53 | \$1.31 |
| Green Line | \$1.82 | \$1.88 | \$1.83 | \$2.17 | \$2.05 | \$2.03 | \$2.00 | \$1.61 | \$2.01 | \$1.43 | \$1.87 | \$2.19 | \$1.87 |
| Gold Line | \$2.26 | \$2.67 | \$2.14 | \$2.16 | \$2.05 | \$3.07 | \$2.23 | \$1.91 | \$1.94 | \$2.10 | \$2.40 | \$2.54 | \$2.27 |



No facility costs are included

Capital Projects

October 2008

| Division Number/ Location | Project Number/Name | Description | LOP Budget | Amount Spent | Amount Remaining | Scheduled Completion Date | New Projected Completion Date | Comments/Reason |
|------------------------------|-------------------------------|--|---------------|--------------|------------------|------------------------------------|-------------------------------|--|
| Division 11 Blue Line | 204009 - Improvements | Main Shop & Car Wash Extension | \$ 17,395,500 | \$16,871,812 | \$ 523,688 | 1/31/2008 Original SOW complete | Open for add-on work | MBL RFS is building a gate alarm prototype (per TP design). If prototype is successful the remaining 41 alarms will be made by MBL RFS. |
| Division 21 Gold Line | 204017 - Improvements | Historic Aqueduct | \$ 4,500,000 | \$1,707,382 | \$ 2,792,618 | 05/23/08 | 11/15/08 | Awaiting National Historic Registry response. Wilbur Babb is coordinating. Should close out about 11/15/08. |
| Division 22 Green Line | 204037 - Improvements Ph 2 | Wheel True Pit & Machine. Crossover Train Control | \$ 4,895,000 | \$3,551,802 | \$ 1,343,198 | 01/07/09 | 01/07/09 | WTM Pit has gone to closeout; final invoice & retention has been paid. WTM has been accepted. Parts inventory was completed 10/13/08. A new metal shavings hopper has been delivered by Simmons. |
| Division 20 Red Line | 204047 - Car Wash/CCP | Car Wash & Cleaning Platform | \$ 15,400,000 | \$12,842,909 | \$ 2,557,091 | 03/03/09 | 05/17/10 | This CP has been acquired by Girish Roy & MTA Construction. |
| Division 21 Gold Line | 204053 - Phase 2 Improvements | Body Shop | \$ 5,000,000 | \$1,703,125 | \$ 3,296,875 | 02/10/11 | 02/10/11 | Eastside Extension group is coordinating this CP. Permits & floor plans are in progress. |
| Division 20 Red Line | 204054 - Additional Hoists | Additional two double-pair vehicle hoists | \$ 4,250,000 | \$2,482,683 | \$ 1,767,317 | 06/30/08 | 05/12/09 | Contractor completed excavating 2 pits on 8/22/08. 5 to 6 months until hoists are delivered to MRL shop. |
| Division 22 Green Line | 204059 - Spray Paint Booth | Small Spray Paint Booth | \$ 324,476 | \$213,490 | \$ 110,986 | 05/16/08 | 10/08/09 | This CP, per request of the new MGL manager, will be rescoped to enlarge & relocate the paint shop structure. |

Rail Fleet Services Instruction

October 2008

Training classes completed during the month of October 2008

| Description | Status | Start | End | Course Hours | Student Count | Training Hours |
|---|----------|------------|------------|--------------|---------------|----------------|
| Blue Line Training (Nippon Sharyo P865/P2020 LRV): | | | | | | |
| MOP RECORDS MANAGEMENT | Complete | 10/23/2008 | 10/23/2008 | 2 | 3 | 6 |
| BACK SAFETY (Video) | Complete | 10/17/2008 | 10/17/2008 | 2 | 17 | 34 |
| ETD INTRODUCTION TO HUMAN RESOURCES POLICIES | Complete | 10/30/2008 | 10/30/2008 | 2 | 1 | 2 |
| WRITING TECHNICAL REPORTS | Complete | 10/22/2008 | 10/22/2008 | 3 | 1 | 3 |
| MOP VIOLENCE IN THE WORKPLACE | Complete | 10/30/2008 | 10/30/2008 | 4 | 1 | 4 |
| MOP SEXUAL HARASSMENT PREVENTION AND TITLE VII | Complete | 10/9/2008 | 10/9/2008 | 2 | 1 | 2 |

Total Blue Line Training (Hours): 51

Red Line Training (Breda A650 HRV):

| | | | | | | |
|--------------------------------|----------|------------|------------|----|---|----|
| ETD BUSINESS WRITING SKILLS | Complete | 10/29/2008 | 10/29/2008 | 3 | 2 | 6 |
| NEW SERVICE ATTENDANT TRAINING | Complete | 10/3/2008 | 10/8/2008 | 12 | 1 | 12 |
| EXCEL - 2003 BEGINNER | Complete | 10/23/2008 | 10/23/2008 | 6 | 1 | 6 |
| WRITING TECHNICAL REPORTS | Complete | 10/22/2008 | 10/22/2008 | 3 | 1 | 3 |
| PRE-SUPERVISORY TRAINING | Complete | 10/8/2008 | 10/9/2008 | 14 | 1 | 14 |

Total Red Line Training (Hours): 41

Green Line Training (Siemens P2000 LRVs):

| | | | | | | |
|--------------------------------------|----------|------------|------------|------|---|-----|
| NEW SERVICE ATTENDANT TRAINING | Complete | 10/3/2008 | 10/8/2008 | 16 | 1 | 16 |
| FORKLIFT, OSHA REFRESHER | Complete | 10/24/2008 | 10/24/2008 | 2 | 6 | 12 |
| DIRECT DEPOSIT SELF SERVICE TRAINING | Complete | 10/23/2008 | 10/23/2008 | 0.75 | 2 | 1.5 |

Total Green Line Training (Hours): 29.5

Gold Line Training (P2550 & P2000 LRVs):

| | | | | | | |
|--------------------------------|----------|------------|------------|----|---|----|
| MOP VIOLENCE IN THE WORKPLACE | Complete | 10/30/2008 | 10/30/2008 | 4 | 2 | 8 |
| NEW SERVICE ATTENDANT TRAINING | Complete | 10/3/2008 | 10/10/2008 | 12 | 1 | 12 |

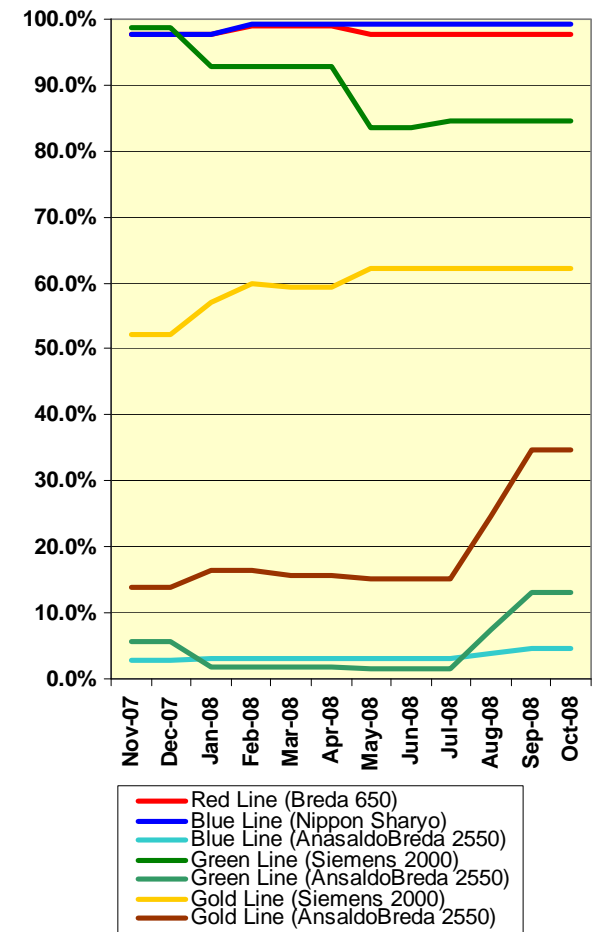
Total Gold Line Training (Hours): 20

Total Rail Fleet Services Instruction for the month of October 2008 (Hours): 141.5

Core Vehicle Training Completed:

| | <u>BLUE</u> | <u>RED</u> | <u>GREEN</u> | <u>GOLD</u> |
|---|--------------|--------------|--------------|--------------|
| Percentage of core vehicle training complete: | 99.2% | 97.6% | 84.7% | 62.3% |
| AnsaldoBreda 2550 Training Completed: | 4.6% | N/A | 13.1% | 34.8% |
| Average Specialist Rail Experience Level in Years: | 9.9 | 8.2 | 7.2 | 6.9 |

Core Training Completed

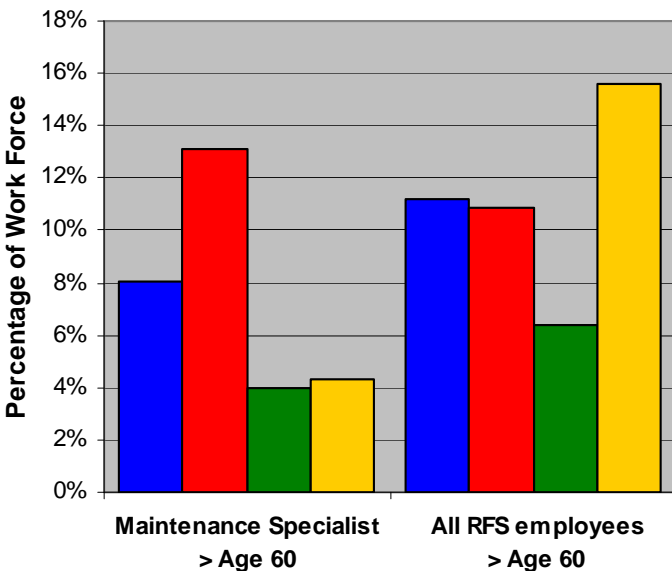


The Retirement Rush

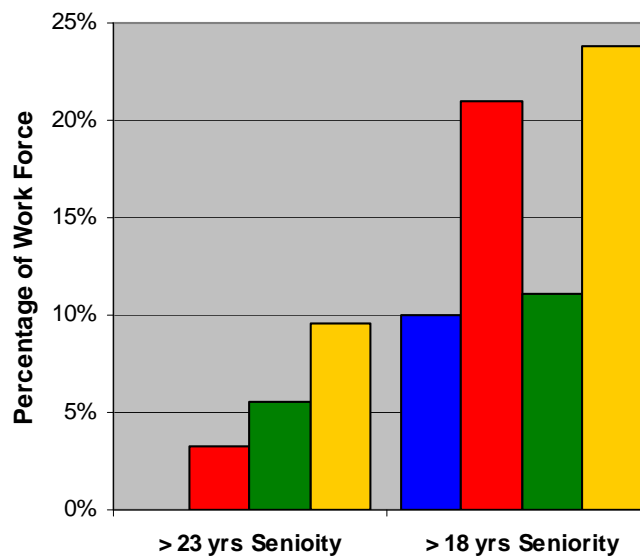
(Metro's Ageing Work Force)

These charts show how many of Rail Fleet Services' employees are within five years of reaching age 65 (normal retirement). Of special interest is the Maintenance Specialist position because of their rail experience, training, education, and difficulty of replacement. Also shown is the ATU's 23 and out retirement program. Very few ATU employees work past 23 year Seniority.

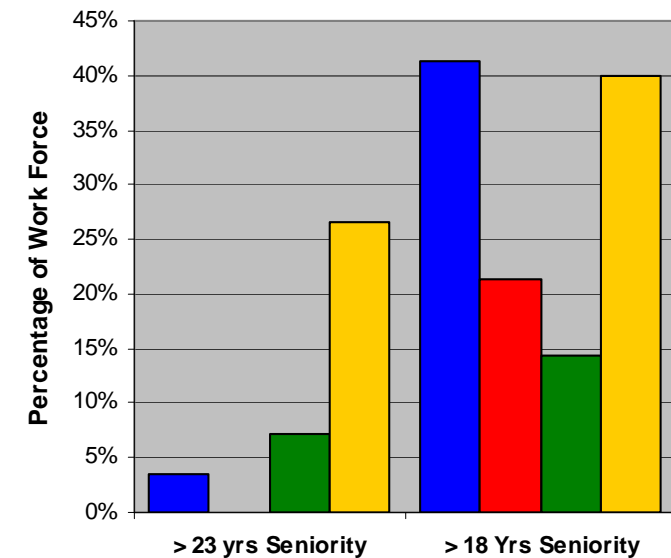
Over Age 60



ATU Maint. Specialist Seniority



ATU Service Attendant Seniority



Maintenance Specialist are the employees who repair Metro's Light and Heavy Vehicles

| Line | Maintenance Specialists > Age 60 | All RFS Employees > Age 60 | Maintenance Specialists > 23 yrs Seniority | Maintenance Specialists > 18 yrs Seniority | Service Attendants > 23 yrs Seniority | Service Attendants > 18 yrs Seniority |
|--------|----------------------------------|----------------------------|--|--|---------------------------------------|---------------------------------------|
| Blue | 5 of 62 | 12 of 107 | 0 of 62 | 6 of 62 | 1 of 29 | 12 of 29 |
| Red | 8 of 61 | 11 of 101 | 2 of 61 | 13 of 61 | 0 of 28 | 6 of 28 |
| Green | 2 of 25 | 3 of 47 | 1 of 25 | 5 of 25 | 1 of 14 | 2 of 14 |
| Gold | 1 of 23 | 7 of 45 | 2 of 23 | 5 of 23 | 4 of 15 | 6 of 15 |
| Totals | 15 of 171 | 33 of 300 | 5 of 171 | 29 of 171 | 12 of 86 | 55 of 86 |