



Rail Fleet Services Monthly Report September 2008



Metro

Table of Contents

• Safety	
– Industrial Injuries	Page 1
– Rail Vehicle Accidents & Major Incidents	Page 2
• Customer Service	
– Service Delivery – AM/PM Pull-Outs	Page 3
– Vehicle Utilization – Blue Line & Green Line	Page 4
– Vehicle Utilization – Red Line & Gold Line	Page 5
– Mean Miles Between Failures (Major)	Page 6
– Repeater Car Details	Page 7
– Metro Rail Reliability	Page 8
• Business Processes	
– Incident Problems	Page 9
– Preventative Maintenance Compliance	Page 10
• Finance	
– Vandalism & Graffiti Costs	Page 11
– Graffiti Pictures	Page 12
– Material & Labor Costs	Page 13
– Cost per mile	Page 14
– Capital Projects	Page 15
• Growth	
– Rail Fleet Service Training	Page 16

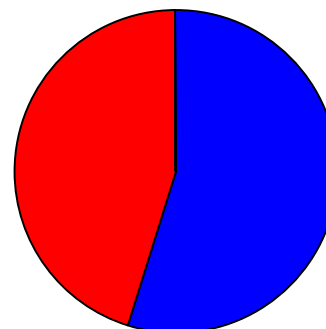
Industrial Injuries – Lost Work Hours

September 2008

	Oct-07	Nov-07	Dec-07	Jan-08	Feb-08	Mar-08	Apr-08	May-08	Jun-08	Jul-08	Aug-08	Sep-08	Year to Date
Blue Line	160	160	133	16	0	80	48	160	112	152	240	320	1,581
Red Line	184	152	0	0	184	80	48	368	344	344	392	264	2,360
Green Line	2	0	0	160	24	0	0	0	0	0	0	0	186
Gold Line	80	160	176	64	0	0	0	0	0	0	0	0	480
Totals	426	472	309	240	208	160	96	528	456	496	632	584	4,607

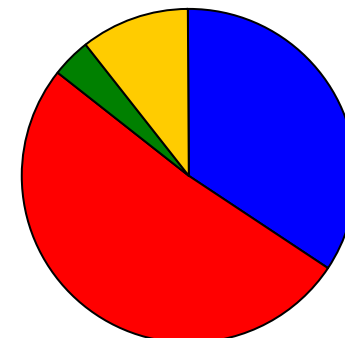
	Employees		September 2008 Lost Work Hours		
	Assigned	Active	Service Attendant	Maint. Specialist	September 2008 Total Hours
Blue Line	111	107	144	176	320
Red Line	109	102	264	0	264
Green Line	48	48	0	0	0
Gold Line	46	45	0	0	0
Totals	314	302	408	176	584
Total Lost Work Hours for 12-months = 4,607 hours					

September 2008 - Lost Work Hours



■ Blue Line ■ Red Line ■ Green Line ■ Gold Line

Year-to-Date Lost Work Hours



■ Blue Line ■ Red Line ■ Green Line ■ Gold Line

Rail Vehicle Accidents & Major Incidents

September 2008

	Oct-07	Nov-07	Dec-07	Jan-08	Feb-08	Mar-08	Apr-08	May-08	Jun-08	Jul-08	Aug-08	Sep-08	Totals
Blue Line	\$0	\$4,661	\$4,489	\$8,500	\$497	\$4,235	\$1,789	\$2,473	\$1,412	\$14,603	\$7,308	\$55,579	\$105,546
Red Line	\$0	\$203	\$0	\$0	\$0	\$274	\$0	\$0	\$418	\$0	\$3,127	\$0	\$4,022
Green Line	\$0	\$6,036	\$0	\$0	\$289	\$0	\$0	\$0	\$0	\$0	\$0	\$15,758	\$22,083
Gold Line	\$34,189	\$0	\$326	\$340	\$18,388	\$0	\$0	\$0	\$0	\$0	\$3,504	\$0	\$56,747
Totals	\$34,189	\$10,900	\$4,815	\$8,840	\$19,174	\$4,509	\$1,789	\$2,473	\$1,830	\$14,603	\$13,939	\$71,337	\$188,398

Rail Vehicle Accident Costs - September, 2008			
2008	Problem code	Incident Description	Cost
Sept. 3	Missile vs. Train	10-71 Missile vs. Train @41st St.	\$1,380
Sept. 4	Train vs. Auto	Train 9 vs. Auto at Intersection Washington/Central. Operator 233, Cars (138B) 139-149	\$4,278
Sept. 11	Train vs. Auto	10-73 minor Flower St. & 18th St. Track 2 s/b. No injuries, Train 9, T-194. Cars (133A) 128 159.	\$719
Sept. 12	Train vs. Ped	Person hit by train in grade crossing. TR 19, T-159, (158) 126 142 Vernon Track 2 s/b.	\$792
Sept. 17	Train vs. Other	10-71, Train vs. Debris - palm tree. Train 7 Cars 167a-145-140, T-150. Track 1 n/b at Long Beach Blvd. & 15th St.	\$3,601
Sept. 19	Train vs. Bus	Train collided with bus causing derailment Train 5, T-037, 128 102(112) Washington & Griffith Track 2 s/b	\$44,809
Blue Line Total Repair Cost			\$55,579
Sept. 11	Train vs. Other	Train ran over bed liner. Loss of Cab Signals. Train #52, T-105, Cars #(206-B)-217 at Harbor Station W/bound Track 1.	\$15,758
Green Line Total Repair Cost			\$15,758
Grand total			\$71,337



September 19, 2008 – Blue Line: Train collided with Bus



Note: 1.) The monthly accident charges listed represent only the expenses incurred in that particular month and are not a total repair of an individual accident. 2.) On Sept. 19 accident, the cost to repair the train is preliminary. 3.) The bus total loss cost is to be determined.

Service Delivery – AM/PM Pull-Outs

September 2008

Cars Available for AM/PM Pull-Outs

Blue Line – Fleet Size 69 cars

- Weekday pull-out: 60 cars
- Weekend pull-out: 36 cars
- **Monthly Mileage: 403,361 miles**

Red Line - Fleet Size 104 cars

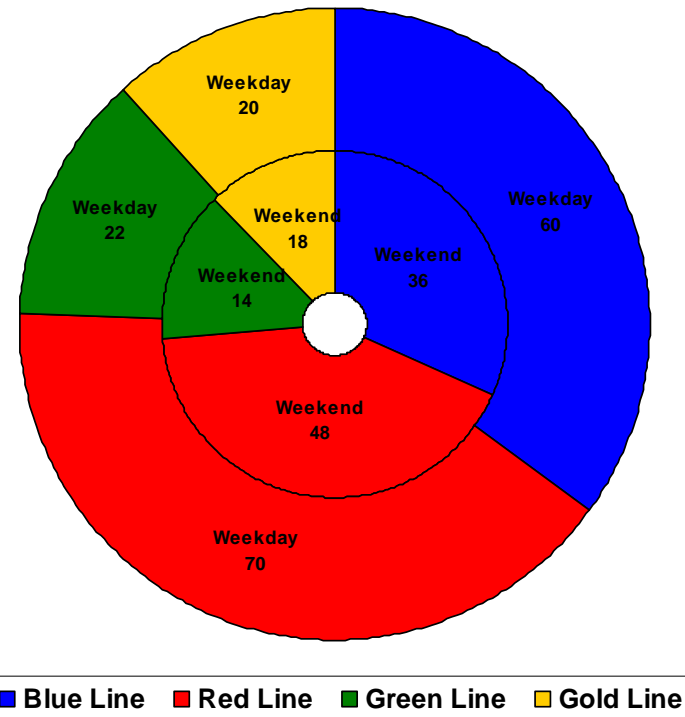
- Weekday pull-out: 70 cars
- Weekend pull-out: 48 cars
- **Monthly Mileage: 544,302 miles**

Green Line – Fleet Size 28 cars

- Weekday pull-out: 22 cars
- Weekend pull-out: 14 cars
- **Monthly Mileage: 226,339 miles**

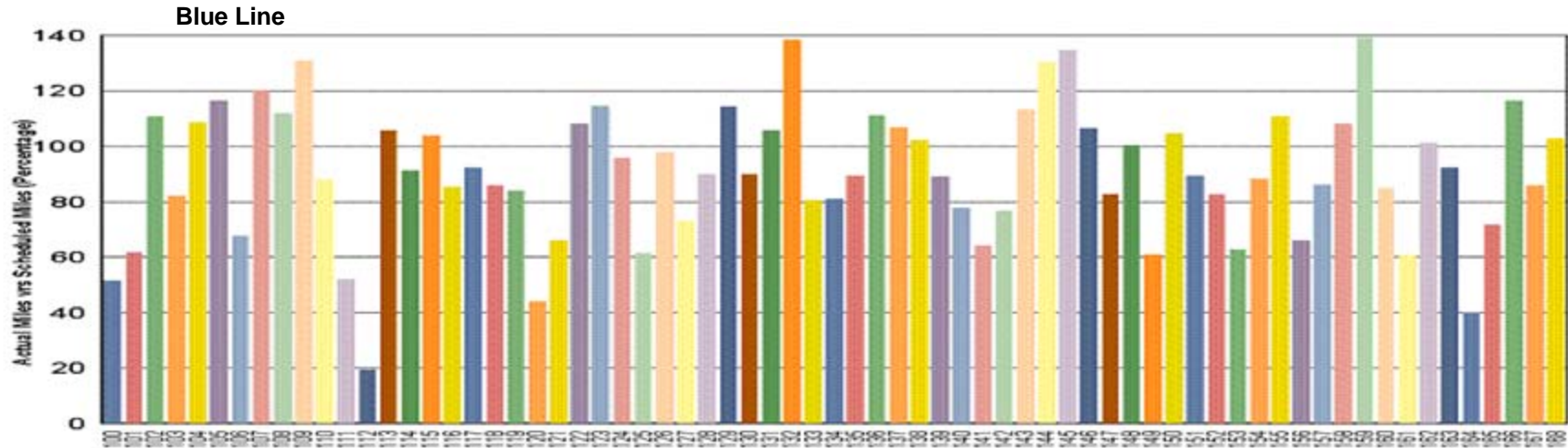
Gold Line – Fleet Size 24 cars

- Weekday pull-out: 20 cars
- Weekend pull-out: 18 cars
- **Monthly Mileage: 147,380 miles**



VEHICLE UTILIZATION

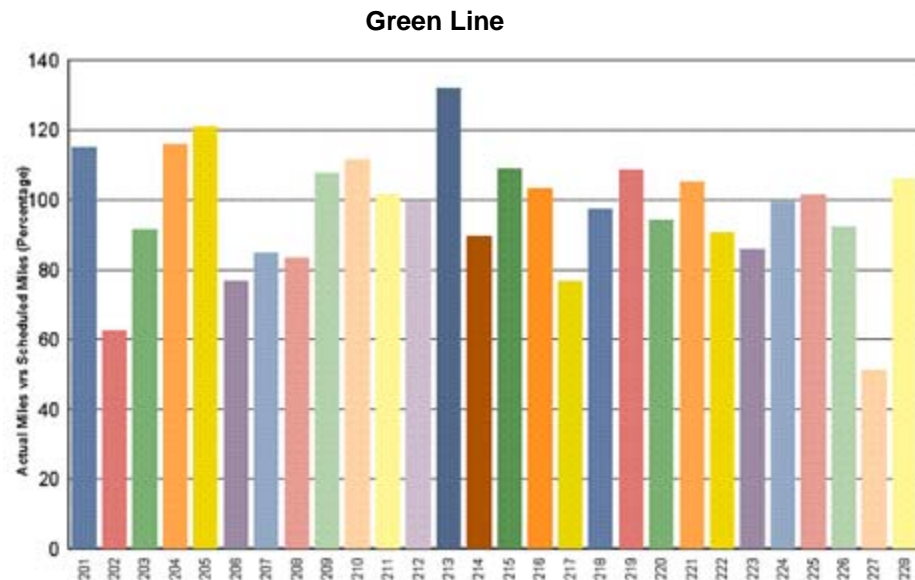
September 1, 2008 to September 30, 2008



Blue Line - Car 112 is out of service due to accident. Bus hit train on 09-19-08.

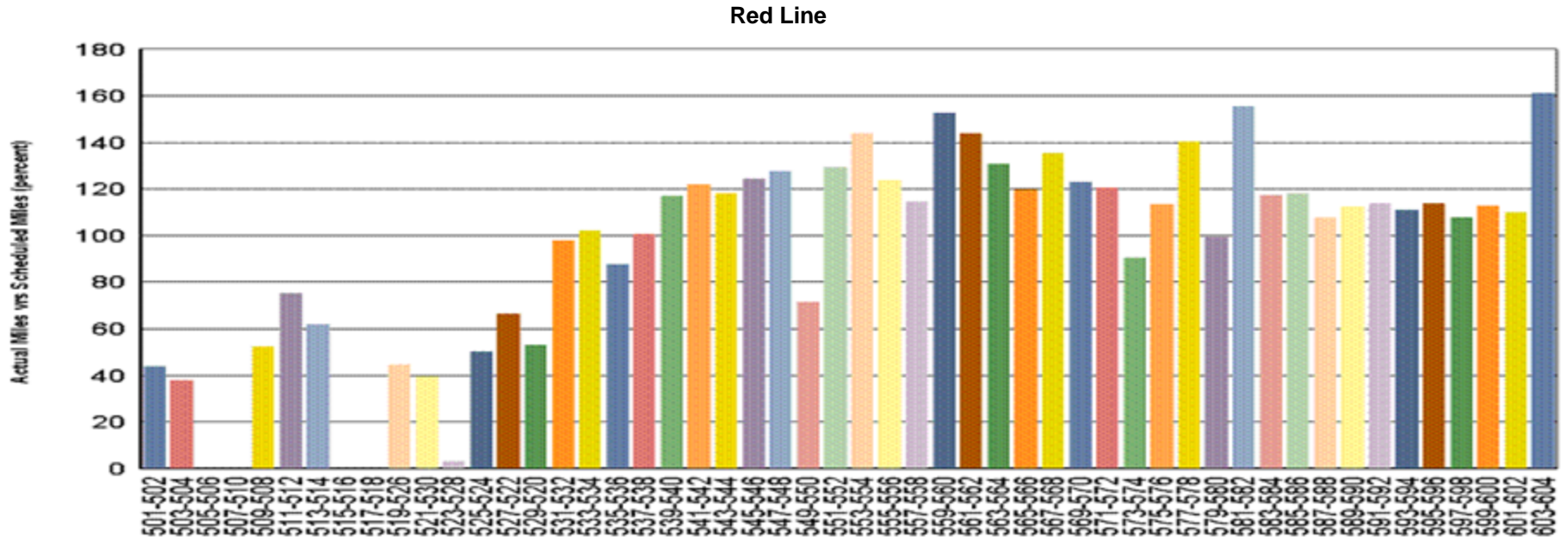
Green Line - Car 227 has been having ATO problems.

Percentage includes an average 4% mileage deduction for Yard mileage and Vehicle Testing.

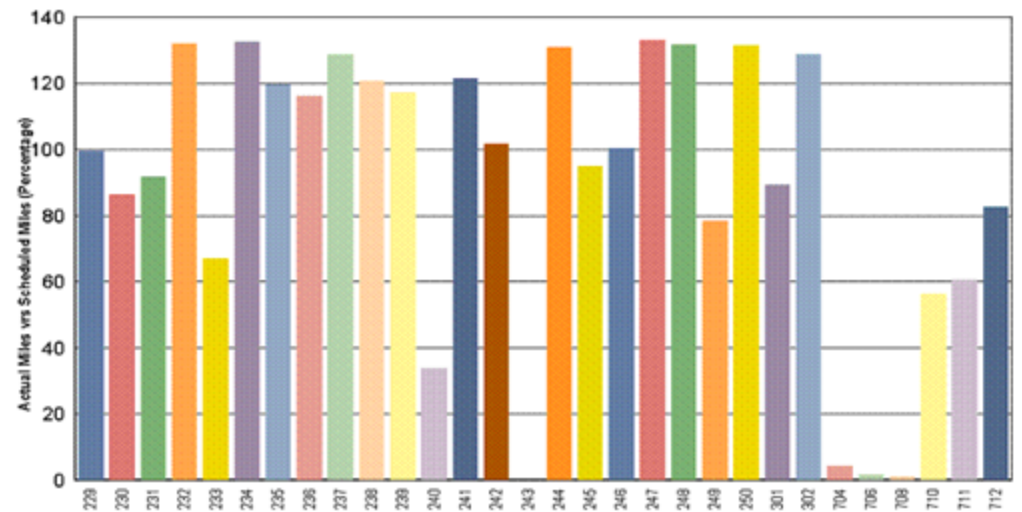


VEHICLE UTILIZATION

September 1, 2008 to September 30, 2008



Gold Line



Red Line - The original 30 Base Buy cars are not being used to their fullest potential so the remaining Option Buy cars are forced to pick up the slack.

Gold Line - Car 243 is in Sacramento at the Siemens' factory having its fire damage repaired and the AnsaldoBreda cars (700 series) are having some teething problems.

Percentage includes an average 4% mileage deduction for Yard mileage and Vehicle Testing

Mean Miles Between Failures (Major)

September 2008

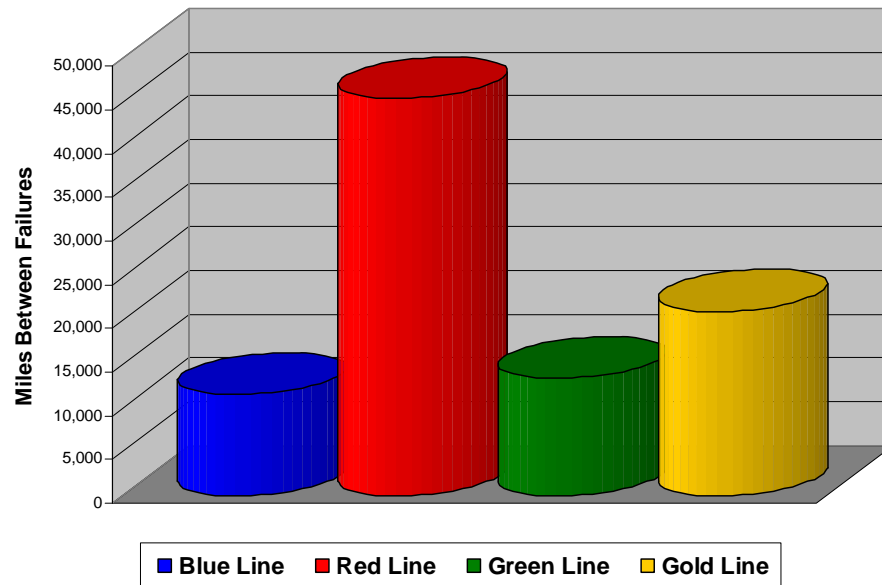
Miles Between Major Failures

Blue Line: 11,525 miles (35 Major Failures)

Red Line: 45,386 miles (12 Major Failures)

Green Line: 13,314 miles (17 Major Failures)

Gold Line: 21,054 miles (7 Major Failures)



Major Failure: When a train does not complete its scheduled run or is more than 5 minutes late of its scheduled arrival time.

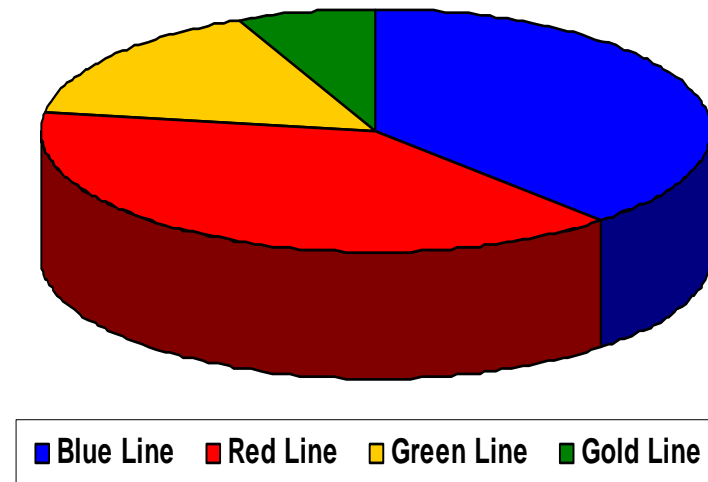
Repeat Failures

Blue Line: 26 Repeat Failures

Red Line: 20 Repeat Failures

Green Line: 9 Repeat Failures

Gold Line: 3 Repeat Failures



Repeater Car Details

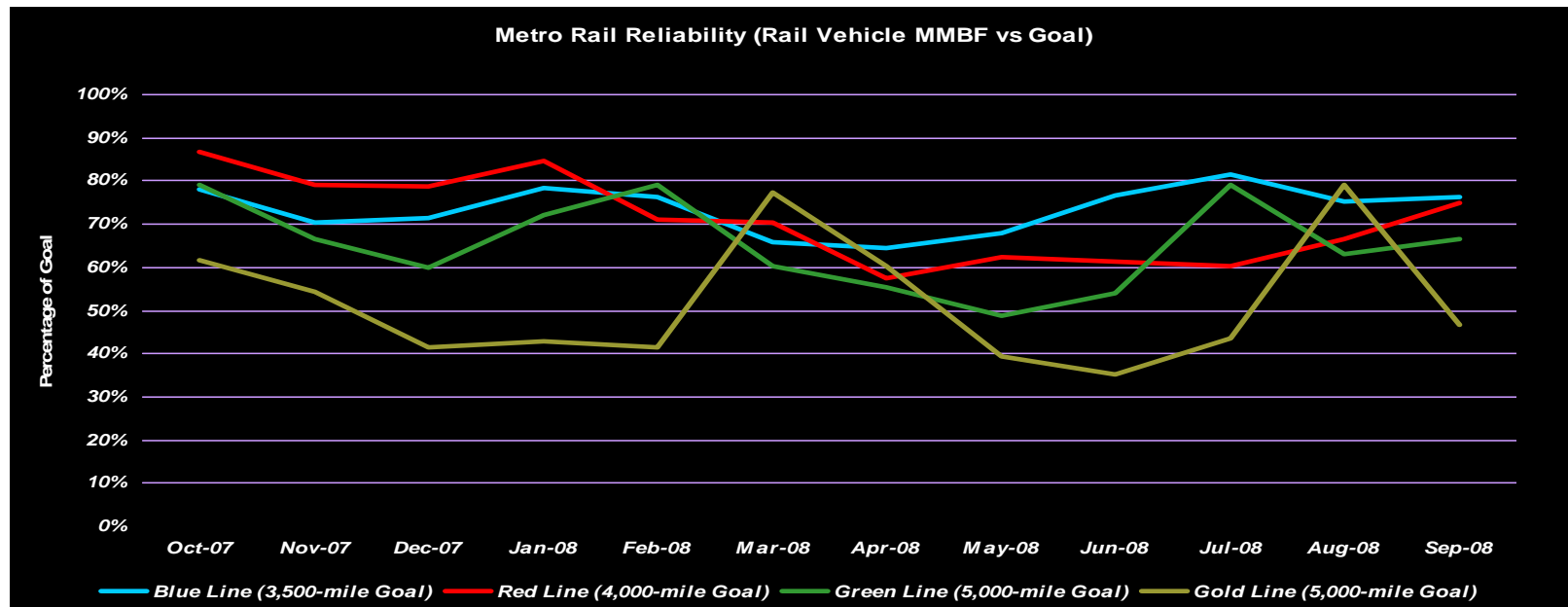
September 2008

System	Blue Line		Red Line		Green Line		Gold Line	
	Car #	No. of Repeats	Car #	No. of Repeats	Car #	No. of Repeats	Car #	No. of Repeats
Announcements			565	1				
ATP	125	2					240	1
Berthing			586	1				
Doors	115	1	512	1	204	1		
	122	3	532	1				
	161	2	571	3				
			572	2				
Friction Brakes	140	1	547	1	217	1		
HSCB							710	1
Horn/Gong					227	1		
HVAC			574	1				
			582	1				
Lighting	124	1						
Low Air Pressure Propulsion/Dynamic Brake					206	1		
	106	1	503	2	203	2		
	108	1	504	1	208	1	711	1
	133	1	549	2	211	1		
	135	2	583	1	216	1		
	141	1						
	142	1						
	154	1						
	158	2						
	167	1						
PA/Intercom			503	1				
			514	1				
Radio	136	1						
	158	1						
	161	1						
Trucks/Wheels/Flats	110	1						
	152	1						
TOTALS	26		20		9		3	

Metro Rail Reliability

September 2008

	Oct-07	Nov-07	Dec-07	Jan-08	Feb-08	Mar-08	Apr-08	May-08	Jun-08	Jul-08	Aug-08	Sep-08
Blue Line Rail Vehicle Incidents	155	161	159	147	143	176	178	173	149	148	156	151
Blue Line Scheduled Monthly Mileage	423,395	396,981	398,168	402,556	382,656	406,275	401,881	410,888	400,058	421,632	411,301	403,361
Blue Line MMBF	2,732	2,466	2,504	2,738	2,676	2,308	2,258	2,375	2,685	2,849	2,637	2,671
Blue Line (3,500-mile Goal)	78%	70%	72%	78%	76%	66%	65%	68%	77%	81%	75%	76%
Red Line Rail Vehicle Incidents	155	163	166	158	175	192	228	212	209	221	199	182
Red Line Scheduled Monthly Mileage	537,311	515,266	521,889	535,220	496,907	539,274	524,452	528,698	513,141	532,394	529,268	544,302
Red/Purple Line MMBF	3,467	3,161	3,144	3,387	2,839	2,809	2,300	2,494	2,455	2,409	2,660	2,991
Red Line (4,000-mile Goal)	87%	79%	79%	85%	71%	70%	58%	62%	61%	60%	66%	75%
Green Line Rail Vehicle Incidents	57	64	72	62	53	73	79	90	78	55	68	68
Green Line Scheduled Monthly Mileage	225,861	212,749	215,515	223,068	209,648	219,499	218,303	219,499	211,045	217,035	214,560	226,339
Green Line MMBF	3,962	3,324	2,993	3,598	3,956	3,007	2,763	2,439	2,706	3,946	3,155	3,329
Green Line (5,000-mile Goal)	79%	66%	60%	72%	79%	60%	55%	49%	54%	79%	63%	67%
Gold Line Rail Vehicle Incidents	46	50	69	73	69	39	49	76	83	70	38	63
Gold Line Scheduled Monthly Mileage	141,889	135,554	142,976	155,907	143,185	151,044	147,591	149,693	146,598	152,075	150,466	147,380
Gold Line MMBF	3,085	2,711	2,072	2,136	2,075	3,873	3,012	1,970	1,766	2,173	3,960	2,339
Gold Line (5,000-mile Goal)	62%	54%	41%	43%	42%	77%	60%	39%	35%	43%	79%	47%

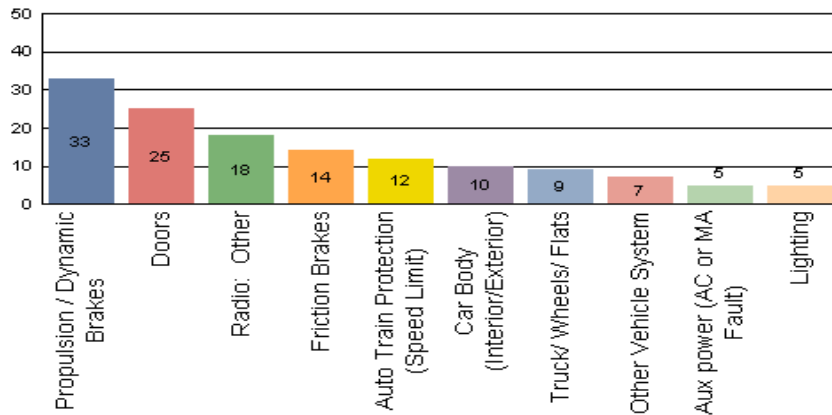


Incident Problems

September 2008

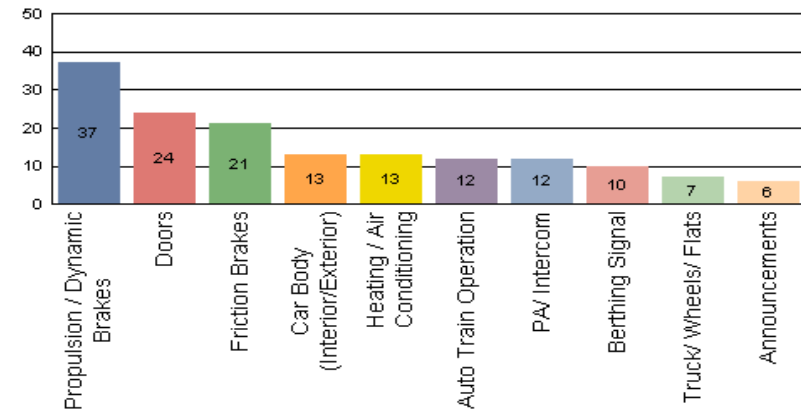
Blue Line

Count of the Top 10 Incident Problems



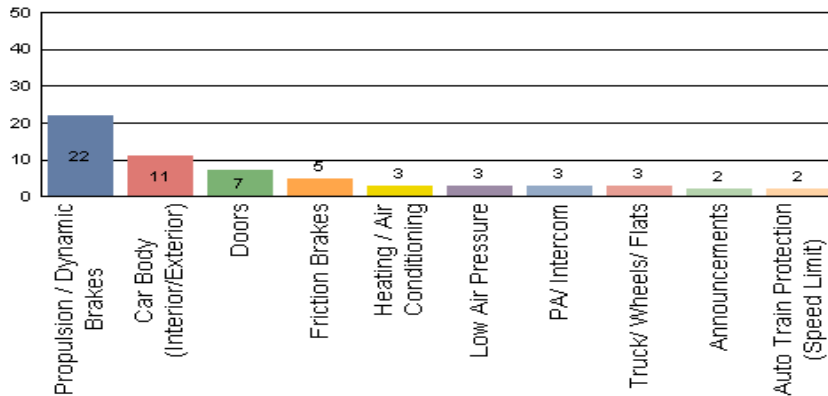
Red Line

Count of the Top 10 Incident Problems



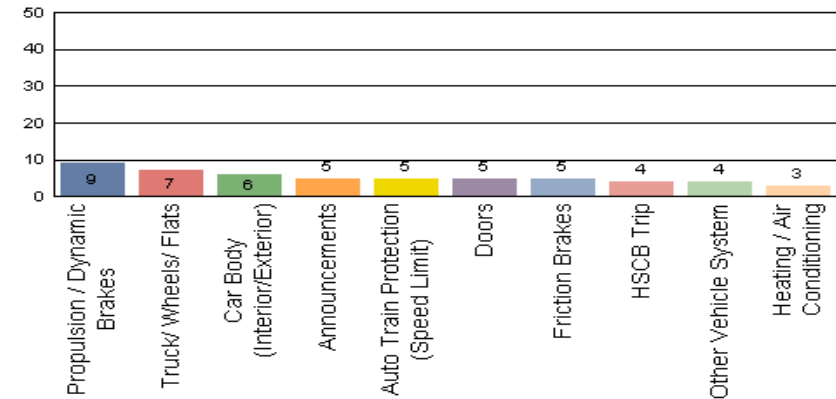
Green Line

Count of the Top 10 Incident Problems



Gold Line

Count of the Top 10 Incident Problems



Preventative Maintenance Compliance

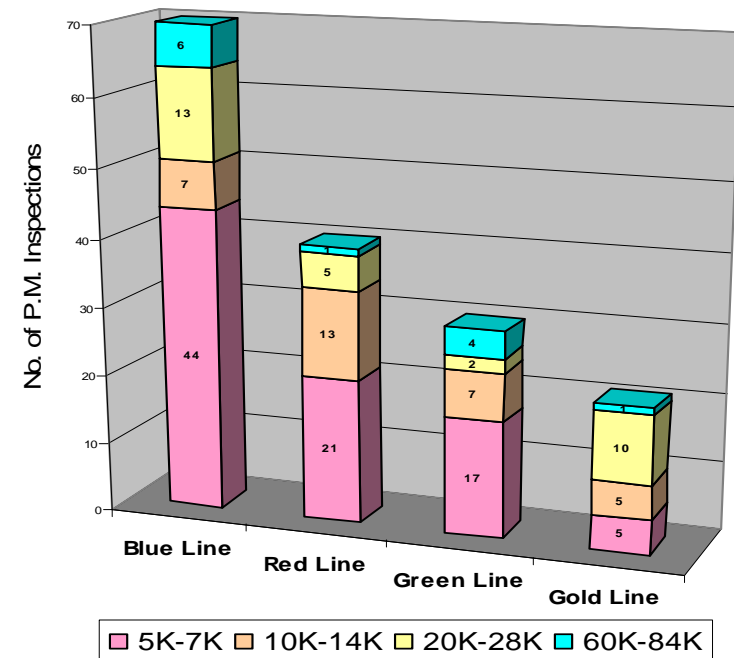
September 2008

	Oct-07	Nov-07	Dec-07	Jan-08	Feb-08	Mar-08	Apr-08	May-08	Jun-08	Jul-08	Aug-08	Sep-08
Blue Line	100%	100%	100%	100%	100%	100%	100%	100%	97%	100%	100%	96%
Red Line	100%	100%	99%	100%	100%	100%	100%	100%	80%	100%	100%	100%
Green Line	100%	100%	100%	95%	100%	100%	100%	100%	100%	100%	100%	100%
Gold Line	100%	100%	100%	100%	100%	100%	100%	100%	100%	100%	100%	100%

September 2008 Preventative Maintenance Inspections

No. of P.M. Inspections	5K	10K	20K	60K	Totals
Blue Line	44	7	13	6	70

No. of P.M. Inspections	7K	14K	28K	84K	Totals
Red Line	21	13	5	1	40
Green Line	17	7	2	4	30
Gold Line	5	5	10	1	21

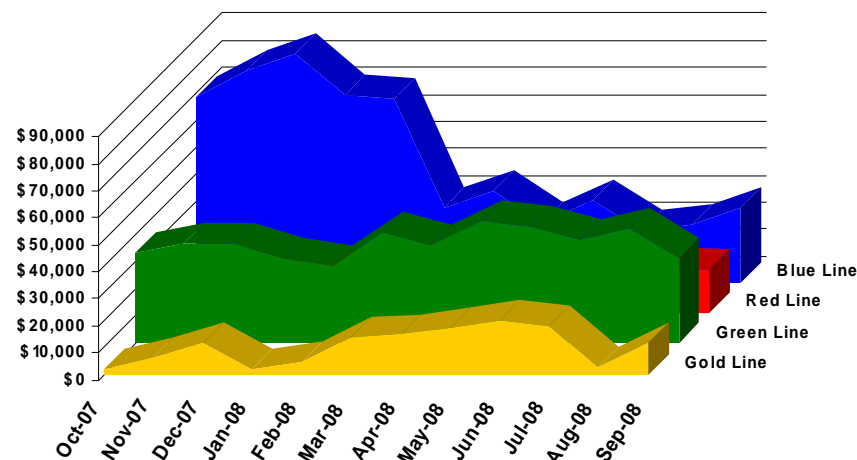


Vandalism & Graffiti Report

September 2008

	Oct-07	Nov-07	Dec-07	Jan-08	Feb-08	Mar-08	Apr-08	May-08	Jun-08	Jul-08	Aug-08	Sep-08	Year-to-Date
Blue Line	\$68,406	\$78,067	\$84,209	\$69,383	\$67,624	\$27,270	\$33,717	\$22,258	\$30,483	\$19,055	\$21,297	\$27,169	\$548,938
Red Line	\$9,355	\$15,156	\$13,231	\$16,100	\$17,874	\$18,388	\$17,477	\$15,881	\$15,127	\$13,153	\$16,728	\$15,743	\$184,213
Green Line	\$33,832	\$37,022	\$37,495	\$31,632	\$28,564	\$41,259	\$36,670	\$45,594	\$43,424	\$38,306	\$42,483	\$31,715	\$447,996
Gold Line	\$1,849	\$6,416	\$11,638	\$2,030	\$4,715	\$13,544	\$14,864	\$17,174	\$19,888	\$17,978	\$2,372	\$11,825	\$124,293
Totals	\$113,442	\$136,661	\$146,573	\$119,145	\$118,777	\$100,461	\$102,728	\$100,907	\$108,922	\$88,492	\$82,880	\$86,452	\$1,305,440

September 2008 Vandalism & Graffiti - All Rail				
	Qty	Labor	Materials	Totals
Windows replaced	25	\$ 2,898	\$ 5,688	\$ 8,586
Vandal Shields	302	\$8,999	\$6,944	\$ 15,943
Seats Cleaned	7,059	\$17,590	\$ 472	\$ 18,062
Seats Replaced	125	\$ 3,938	\$6,192	\$ 10,130
Ext/Int Repairs	1,076	\$ 3,389	\$ -	\$ 3,389
Labor	620	\$26,702	\$ 3,640	\$ 30,342
Totals for September 2008	0	\$63,516	\$22,936	\$ 86,452

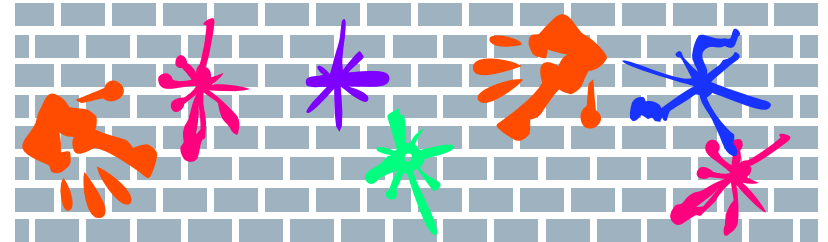


Vandalism & Graffiti Pictures

September, 2008



Blue Line



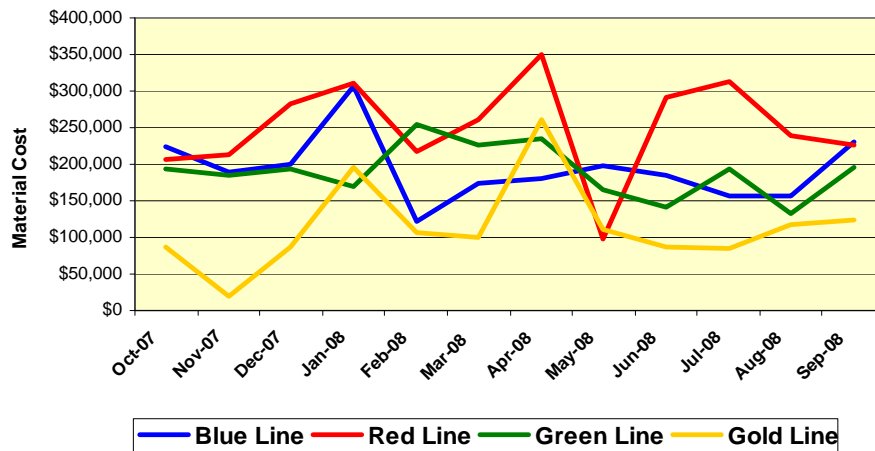
Green Line

Material and Labor Costs

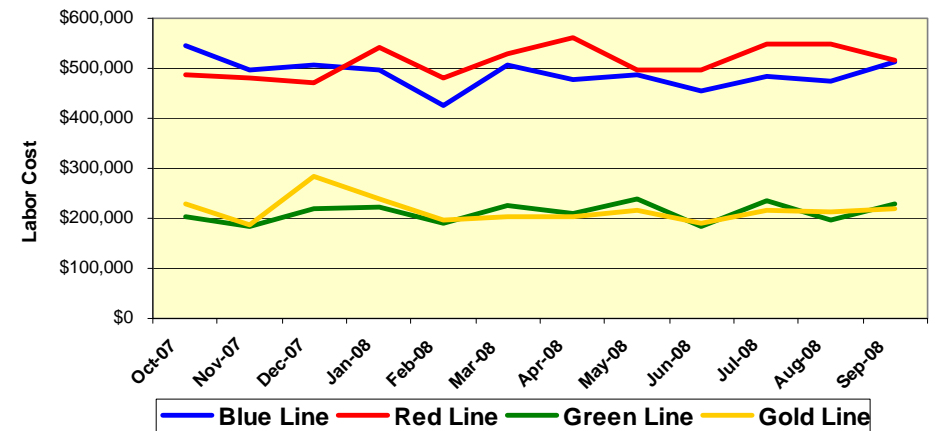
September 2008

Material Costs	Oct-07	Nov-07	Dec-07	Jan-08	Feb-08	Mar-08	Apr-08	May-08	Jun-08	Jul-08	Aug-08	Sep-08
Blue Line	\$224K	\$189K	\$200K	\$307K	\$123K	\$174K	\$181K	\$197K	\$185K	\$157K	\$157K	\$230K
Red Line	\$205K	\$212K	\$283K	\$311K	\$217K	\$261K	\$349K	\$ 99K	\$292K	\$314K	\$240K	\$225K
Green Line	\$193K	\$185K	\$132K	\$169K	\$254K	\$225K	\$235K	\$166K	\$142K	\$194K	\$133K	\$195K
Gold Line	\$88K	\$19K	\$154K	\$195K	\$107K	\$101K	\$260K	\$110K	\$88K	\$85K	\$118K	\$123K
Totals	\$710K	\$559K	\$768K	\$982K	\$701K	\$761K	\$1,052K	\$572K	\$707K	\$750K	\$648K	\$773K

Material Costs



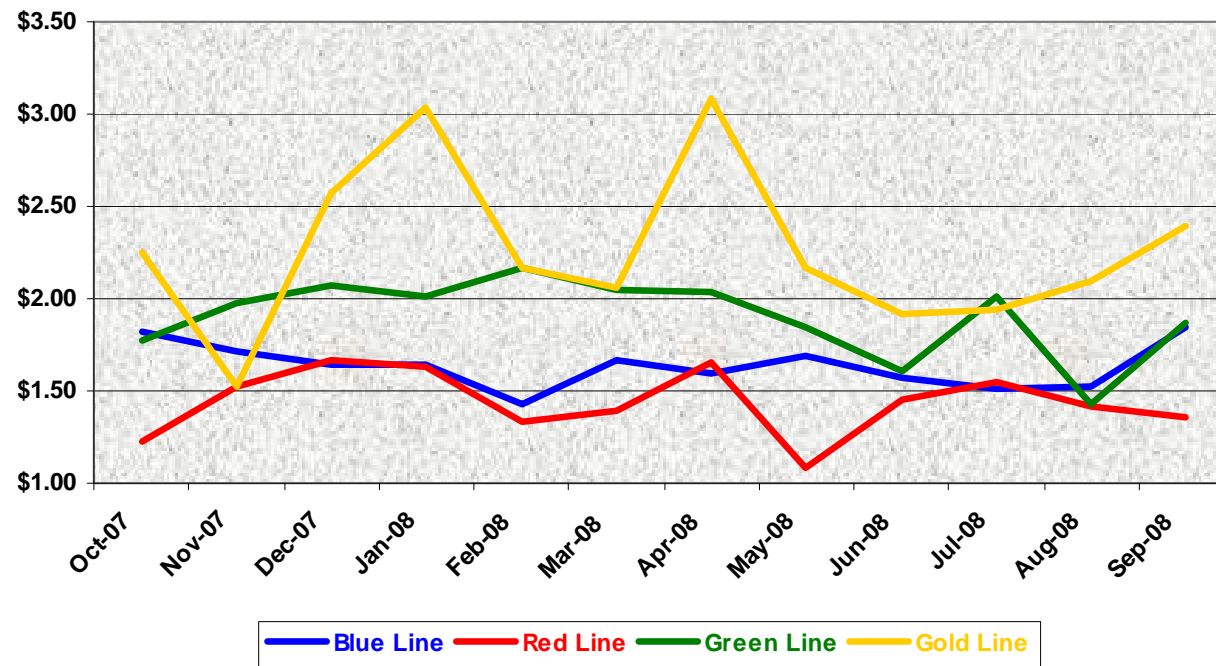
Labor Costs



Labor Costs	Oct-07	Nov-07	Dec-07	Jan-08	Feb-08	Mar-08	Apr-08	May-08	Jun-08	Jul-08	Aug-08	Sep-08
Blue Line	\$545K	\$496K	\$508K	\$498K	\$426K	\$505K	\$479K	\$487K	\$454K	\$483K	\$473K	\$513K
Red Line	\$489K	\$479K	\$471K	\$542K	\$481K	\$530K	\$563K	\$498K	\$496K	\$549K	\$548K	\$516K
Green Line	\$204K	\$185K	\$220K	\$223K	\$190K	\$225K	\$211K	\$239K	\$184K	\$237K	\$196K	\$229K
Gold Line	\$229K	\$186K	\$235K	\$240K	\$196K	\$222K	\$202K	\$216K	\$192K	\$217K	\$214K	\$220K
Totals	\$1,466K	\$1,346K	\$1,484K	\$1,503K	\$1,293K	\$1,482K	\$1,454K	\$1,440K	\$1,326K	\$1,486K	\$1,431K	\$1,478K

Cost Per Mile September 2008

Cost per mile:	Oct-07	Nov-07	Dec-07	Jan-08	Feb-08	Mar-08	Apr-08	May-08	Jun-08	Jul-08	Aug-08	Sep-08	Average
Blue Line	\$1.82	\$1.72	\$1.64	\$1.65	\$1.43	\$1.67	\$1.60	\$1.69	\$1.58	\$1.51	\$1.52	\$1.84	\$1.64
Red Line	\$1.23	\$1.53	\$1.66	\$1.63	\$1.33	\$1.39	\$1.65	\$1.08	\$1.45	\$1.55	\$1.42	\$1.36	\$1.44
Green Line	\$1.77	\$1.98	\$2.07	\$2.01	\$2.17	\$2.05	\$2.04	\$1.84	\$1.61	\$2.01	\$1.43	\$1.87	\$1.90
Gold Line	\$2.25	\$1.52	\$2.57	\$3.04	\$2.16	\$2.05	\$3.09	\$2.17	\$1.91	\$1.94	\$2.10	\$2.40	\$2.27



No facility costs are included

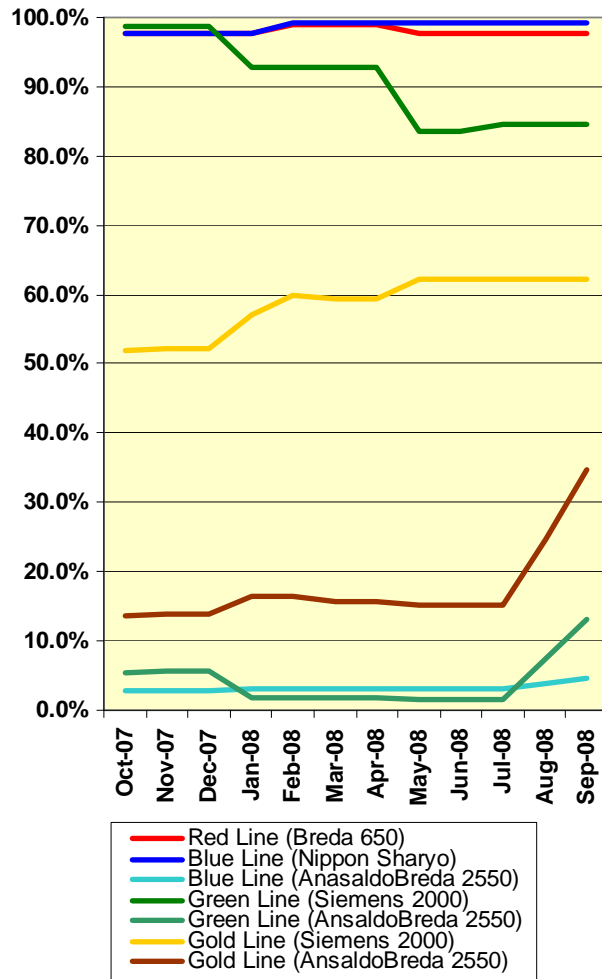
Capital Projects

September 2008

Division Number/ Location	Project Number/Name	Description	LOP Budget	Amount Spent	Amount Remaining	Scheduled Completion Date	New Projected Completion Date	Comments/Reason
Division 11 Blue Line	204009 - Improvements	Main Shop & Car Wash Extension	\$ 17,395,500	\$16,872,083	\$ 523,417	1/31/2008 Original SOW complete	Open for add-on work	MBL RFS is fabricating a gate alarm prototype (per TP design). If prototype is successful the remaining 41 alarms will be made by MBL RFS.
Division 21 Gold Line	20417 - Improvements	Historic Aqueduct	\$ 4,500,000	\$1,709,672	\$ 2,790,328	05/23/08	11/15/08	Awaiting National Historic Registry response. Wilbur Babb is coordinating. Should close out about 11/15/08.
Division 22 Green Line	204037 - Improvements Ph 2	Wheel True Pit & Machine. Crossover Train Control	\$ 4,895,000	\$3,540,171	\$ 1,354,829	01/07/09	01/07/09	WTM Pit has gone to closeout; final invoice & retention has been paid. Crossover Train Control also in closeout. WTM has been tested & conditionally accepted. Parts inventory to be completed 10/13/08. A new metal shavings hopper has been proposed by Simmons.
Division 20 Red Line	20407 - Car Wash/Cleaning Platform	Car Wash & Cleaning Platform	\$ 15,400,000	\$700,001	\$14,699,999	03/03/09	05/17/10	This CP has been acquired by Girish Roy & MTA Construction.
Division 21 Gold Line	204503 - Phase 2 Improvements	Body Shop	\$ 5,000,000	\$1,673,963	\$ 3,326,037	02/10/11	02/10/11	This CP has been acquired by Girish Roy & MTA Construction.
Division 20 Red Line	204054 - Additional Hoists	Additional two double-pair vehicle hoists	\$ 4,250,000	\$2,473,490	\$ 1,776,510	06/30/08	05/12/09	Contractor completed excavating 2 pits on 8/22/08. 5 to 6 months until hoists are delivered to MRL shop.
Division 22 Green Line	204059 - Spray Paint Booth	Small Spray Paint Booth	\$ 324,476	\$206,090	\$ 118,386	05/16/08	10/08/09	This CP, per request of the new MGL manager, will be rescoped to enlarge & relocate the paint shop structure.

Rail Fleet Services Instruction

September 2008



Description	Status	Start	End	Course Hours	Student Count	Training Hours
Blue Line Training (Nippon Sharyo P865/P2020 LRV):						
DRUG-AND-ALCOHOL-FREE WORK ENVIRONMENT POLICY	Complete	9/10/2008	9/10/2008	4	4	16
BLOODBORNE PATHOGENS	Complete	9/6/2008	9/6/2008	2	2	4
FALL PROTECTION	Complete	9/11/2008	9/11/2008	2	1	2
BACK SAFETY (Video)	Complete	9/5/2008	9/5/2008	2	1	2
PERSONAL PROTECTIVE EQUIPMENT	Complete	9/26/2008	9/26/2008	2	1	2
SAFETY ORIENTATION: ON ALERT	Complete	9/26/2008	9/26/2008	2	1	2
BEHIND THE WHEEL	Complete	9/18/2008	9/18/2008	10	1	10
NEW SERVICE ATTENDANT	Complete	9/1/2008	9/18/2008	80	1	80
DRUG AND ALCOHOL	Complete	9/15/2008	9/15/2008	2	1	2
SMART DRIVING (VTT)	Complete	9/15/2008	9/15/2008	8	1	8
ETD WRITING WHEN ENGLISH IS A SECOND LANGUAGE	Complete	9/17/2008	9/17/2008	3	1	3
ETD PUBLIC SPEAKING	Complete	9/3/2008	9/3/2008	3	1	3
AnsaldoBreda 2550 Training (Classes shown under Gold Ln)	Complete	9/1/2008	9/19/2008	96	2	192

Total Blue Line Training (Hours): 326

Red Line Training (Breda A650 HRV):						
RFS HRV RE-RAILING	Complete	9/17/2008	9/19/2008	4	9	36
PRE-SUPERVISORY TRAINING	Complete	9/26/2008	9/26/2008	14	1	14
SMART DRIVING (VTT)	Complete	9/28/2008	9/29/2008	16	1	16
DRUG-AND-ALCOHOL-FREE WORK ENVIRONMENT POLICY	Complete	9/10/2008	9/10/2008	4	1	4
NEO - NEW EMPLOYEE ORIENTATION	Complete	9/15/2008	9/15/2008	4	1	4
AnsaldoBreda 2550 Training (Classes shown under Gold Ln)	Complete	9/1/2008	9/19/2008	96	1	96

Total Red Line Training (Hours): 170

Green Line Training (Siemens P2000 LRVs):						
FALL PROTECTION	Complete	9/11/2008	9/11/2008	2	1	2
BACK SAFETY (Video)	Complete	9/5/2008	9/5/2008	2	1	2
PERSONAL PROTECTIVE EQUIPMENT	Complete	9/26/2008	9/26/2008	2	1	2
SAFETY ORIENTATION: ON ALERT	Complete	9/26/2008	9/26/2008	2	1	2
BEHIND THE WHEEL	Complete	9/18/2008	9/18/2008	10	1	10
NEW SERVICE ATTENDANT	Complete	9/1/2008	9/18/2008	80	1	80
DRUG AND ALCOHOL	Complete	9/15/2008	9/15/2008	2	1	2
SMART DRIVING (VTT)	Complete	9/15/2008	9/15/2008	8	2	16
AnsaldoBreda 2550 Training (Classes shown under Gold Ln)	Complete	9/1/2008	9/19/2008	96	3	288

Total Green Line Training (Hours): 404

Gold Line Training (P2550 & P2000 LRVs):						
RFS ANSALDOBREDA 2550 H.V.A.C.	Complete	9/17/2008	9/19/2008	24	5	120
RFS ANSALDOBREDA 2550 TRUCKS	Complete	9/15/2008	9/16/2008	16	5	80
RFS ANSALDOBREDA 2550 VEHICLE SYSTEMS	Complete	9/12/2008	9/12/2008	8	5	40
RFS ANSALDOBREDA 2550 CARBODY	Complete	9/11/2008	9/11/2008	8	5	40
RFS ANSALDOBREDA 2550 EVENT RECORDER	Complete	9/10/2008	9/10/2008	8	5	40
RFS ANSALDOBREDA 2550 PANTOGRAPH	Complete	9/9/2008	9/9/2008	8	5	40
RFS ANSALDOBREDA 2550 APSLVPSBATTERY	Complete	9/4/2008	9/8/2008	24	5	120

Total Gold Line Training (Hours): 480

Total Rail Fleet Services Instruction for the month of September 2008 (Hours): 1,380.0

Core Vehicle Training Completed:	BLUE	RED	GREEN	GOLD
Percentage of core vehicle training complete:	99.2%	97.6%	84.7%	62.3%
AnsaldoBreda 2550 Training Completed:	4.6%	N/A	13.1%	34.8%
Average Specialist Rail Experience Level in Years:	9.8	8.1	7.1	6.8