



# **Rail Fleet Services Monthly Report April 2009**



**Metro**

# Table of Contents

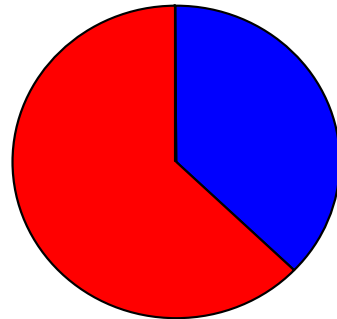
• Safety	
– Industrial Injuries	Page 1
– Rail Vehicle Accidents & Major Incidents	Page 2
• Customer Service	
– Service Delivery – AM/PM Pull-Outs	Page 3
– Vehicle Utilization – Blue Line & Green Line	Page 4
– Vehicle Utilization – Red Line & Gold Line	Page 5
– Mean Miles Between Failures (Major)	Page 6
– Repeaters (Major)	Page 7
• Business Processes	
– Incident Problems	Page 8
– Preventative Maintenance Compliance	Page 9
• Finance	
– Vandalism & Graffiti Costs	Page 10
– Graffiti Pictures	Page 11
– Material & Labor Costs	Page 12
– Cost per mile	Page 13
• Growth	
– Rail Fleet Service Training	Page 14
– Absences vs. Overtime	Page 15

# Industrial Injuries – Lost Work Hours

## April 2009

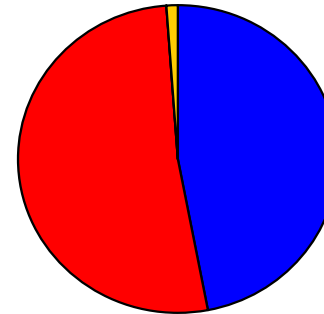
	May-08	Jun-08	Jul-08	Aug-08	Sep-08	Oct-08	Nov-08	Dec-08	Jan-09	Feb-09	Mar-09	Apr-09	Year to Date
Blue Line	160	112	152	240	320	352	328	512	400	488	280	176	3,520
Red Line	368	344	344	392	264	352	328	360	280	264	312	296	3,904
Green Line	0	0	0	0	0	0	0	0	0	0	0	0	0
Gold Line	0	0	0	0	0	0	0	80	8	0	0	0	88
Totals	528	456	496	632	584	704	656	952	688	752	592	472	7,512

April 2009 - Lost Work Hours



■ Blue Line ■ Red Line ■ Green Line ■ Gold Line

Year-to-Date Lost Work Hours



■ Blue Line ■ Red Line ■ Green Line ■ Gold Line

	Employees		April 2009 Lost Work Hours		
	Assigned	Active	Service Attendant	Maint. Specialist	April 2009 Total Hrs.
Blue Line	107	103	176	0	176
Red Line	108	102	296	0	296
Green Line	53	52	0	0	0
Gold Line	47	46	0	0	0
Totals	315	303	472	0	472
Total Lost Work Hours for 12-months = 7,512 hours					

# Rail Vehicle Accidents & Major Incidents

## April 2009

	May-08	Jun-08	Jul-08	Aug-08	Sep-08	Oct-08	Nov-08	Dec-08	Jan-09	Feb-09	Mar-09	Apr-09	Totals
Blue Line	\$2,473	\$1,412	\$14,603	\$7,308	\$55,579	\$1,672	\$1,312	\$20,456	\$79,318	\$3,716	\$9,500	\$111	\$187,849
Red Line	\$0	\$418	\$0	\$3,127	\$0	\$0		\$0	\$0	\$0	\$0	\$0	\$3,545
Green Line	\$0	\$0	\$0	\$0	\$15,758	\$0	\$4,181	\$0	\$0	\$0	\$0	\$0	\$19,939
Gold Line	\$0	\$0	\$0	\$3,504	\$0	\$0		\$0	\$0	\$0	\$1,231	\$3,235	\$3,504
Totals	\$2,473	\$1,830	\$14,603	\$13,939	\$71,337	\$1,672	\$5,493	\$20,456	\$79,318	\$3,716	\$10,731	\$3,346	\$214,837

Rail Vehicle Accident Costs - April 2009			
2009	Problem code	Incident Description	Cost
April 6	10-72 - Train vs. Pedestrian <b>Gold Line</b>	T-234 Track 2 S.W. Museum Station, Car (240B)-301. Train vs. Ped at PedX.	\$3,235
<b>Gold Line Total Repair Cost</b>			<b>\$3,235</b>
April 13	10-71 - Train vs. Other <b>Blue Line</b>	Train 10, Cars 110-113-137, T-108, Track #1, Imperial Station Northbound. Loose left-front skirt, Car 110, struck Imperial platform.	\$111
<b>Blue Line Total Repair Cost</b>			<b>\$111</b>
<b>GRAND TOTAL</b>			<b>\$3,346</b>
No accidents for <b>Red</b> & <b>Green</b> Lines			
(10-71) = Train vs. Object, (10-72) = Train vs. Pedestrian, (10-73) = Train vs. Vehicle, (10-74) = Train vs. MTA Vehicle, (10-75) = Derailment			



*(The monthly accident charges listed represent only the expenses incurred in that particular month and are not a total repair of an individual accident.)*

Train Vs. Other April 13, 2009 – Blue Line

# Service Delivery – AM/PM Pull-Outs

## April 2009

### Cars Available for AM/PM Pull-Outs

#### Blue Line – Fleet Size 69 cars

- Weekday pull-out: 60 cars
- Weekend pull-out: 36 cars
- **Monthly Mileage: 409,729 miles**

#### Red Line - Fleet Size 104 cars

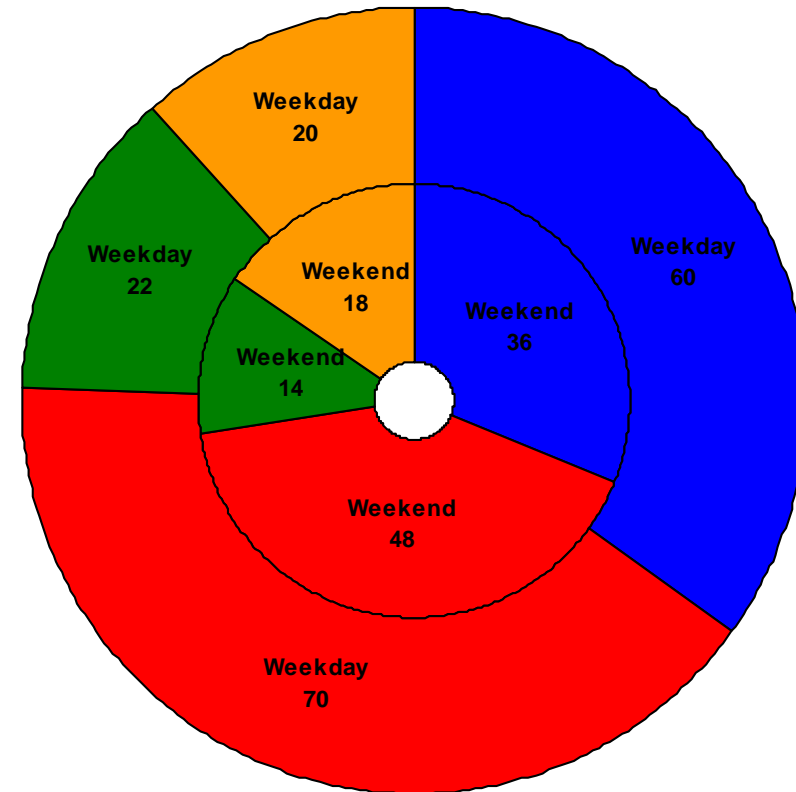
- Weekday pull-out: 70 cars
- Weekend pull-out: 48 cars
- **Monthly Mileage: 554,774 miles**

#### Green Line – Fleet Size 28 cars

- Weekday pull-out: 22 cars
- Weekend pull-out: 14 cars
- **Monthly Mileage: 213,458 miles**

#### Gold Line – Fleet Size 41 cars

- Weekday pull-out: 20 cars
- Weekend pull-out: 18 cars
- **Monthly Mileage: 152,694 miles**

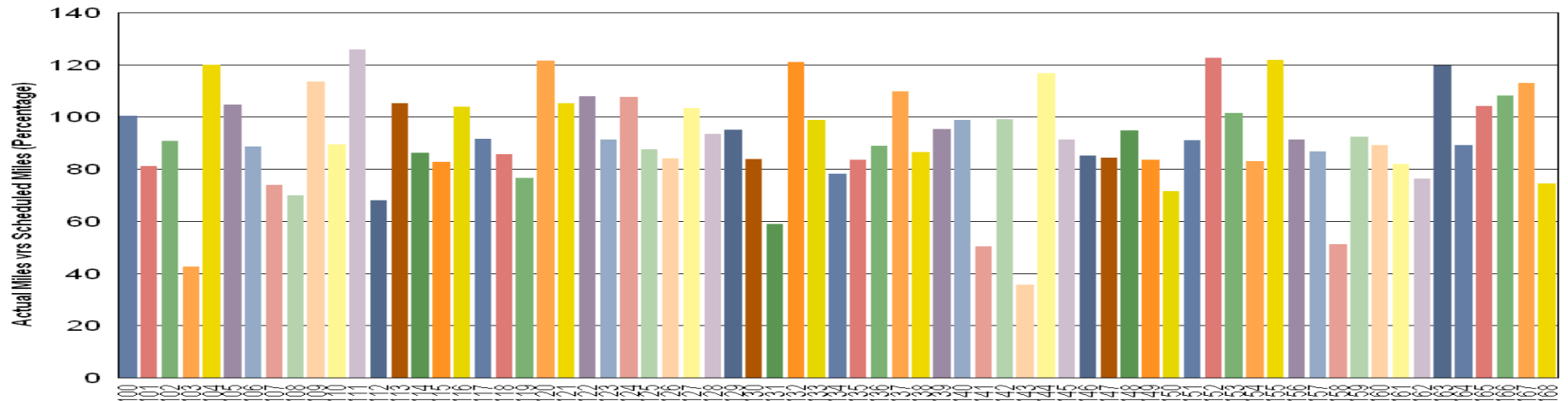


■ Blue Line   ■ Red Line   ■ Green Line   ■ Gold Line

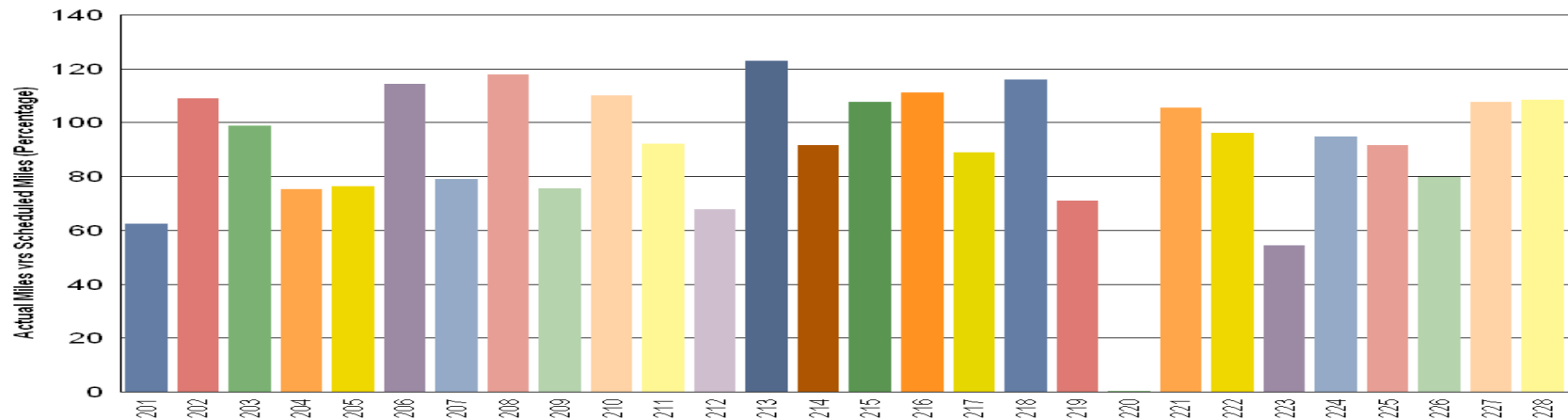
# VEHICLE UTILIZATION

## April 2009

**Metro Blue Line**



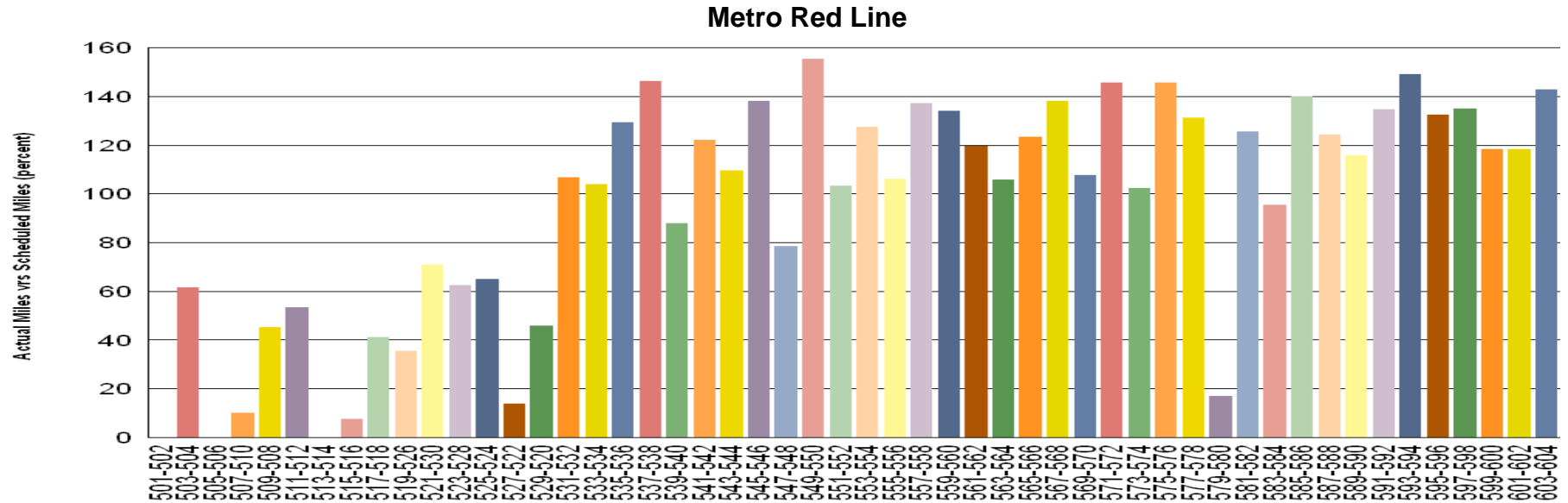
**Metro Green Line**



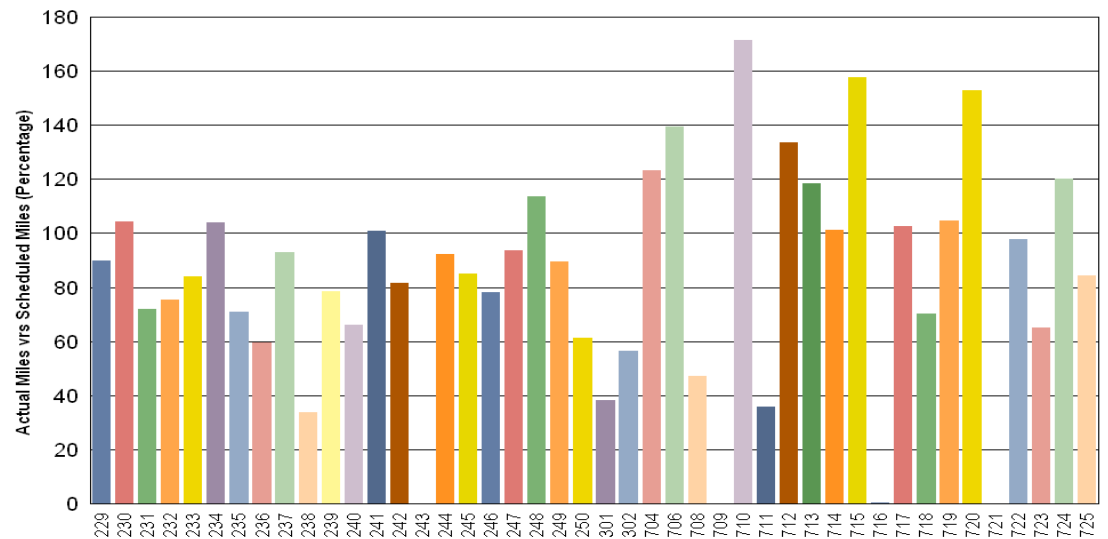
**Green Line Car 220 is under rebuilding A-Truck.**

# VEHICLE UTILIZATION

April 2009



**Metro Gold Line**



**Red Line** - The original 30 Base Buy cars are not being used to their fullest potential for various reasons such as propulsion problems so the remaining Option Buy cars are forced to pick up the slack.

**Gold Line** - Car 243 is in Sacramento having its fire damage repaired. Cars 709 & 716 were waiting for BCB hardware & 721 was waiting paint for match.

Percentage includes an average 4% mileage deduction for Yard mileage and Vehicle Testing.

# Mean Miles Between Failures (Major)

## April 2009

### Miles Between Major Failures

**Blue Line:** 16,389 miles ( 25 Major Failures )

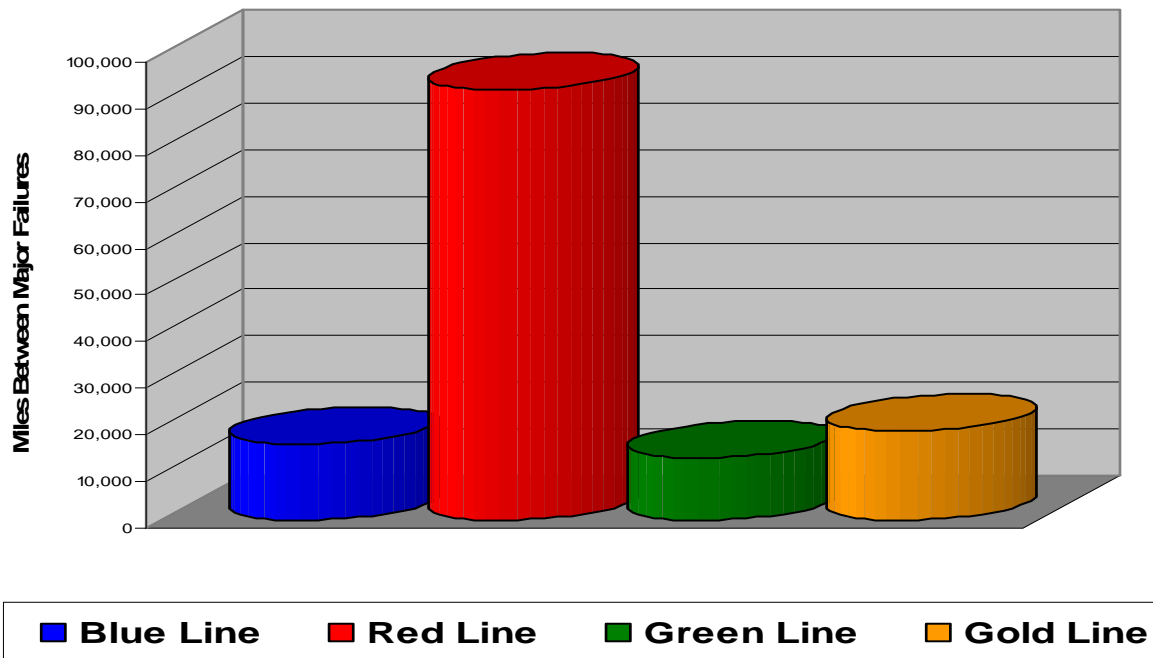
**Red Line:** 92,462 miles ( 6 Major Failures )

**Green Line:** 13,341 miles ( 16 Major Failures )

**Gold Line:** 19,087 miles ( 8 Major Failures )

**Siemens P2000** 76,464 miles ( 0 Major Failure )

**AnsaldoBreda P2550** 9,529 miles ( 8 Major Failures )





# Repeat Failures April 2009

Blue Line: 1 Repeat Failures

Red Line: 10 Repeat Failures

Green Line: 1 Repeat Failures

Gold Line: 1 Repeat Failures



■ Blue Line ■ Red Line ■ Green Line ■ Gold Line

## Repeater Car Details - April 2009

System	Blue Line		Red Line		Green Line		Gold Line	
	Car #	No. of Repeats	Car #	No. of Repeats	Car #	No. of Repeats	Car #	No. of Repeats
Announcements							720	1
ATO/ATP			587	2				
Car Body			601	1				
Communication			555	1				
Lighting	139	1						
Friction Brakes			527	2				
Propulsion/Dynamic Brake			516	1	215	1		
			518	2				
			583	1				
<b>TOTALS</b>	<b>1</b>		<b>10</b>		<b>1</b>		<b>1</b>	

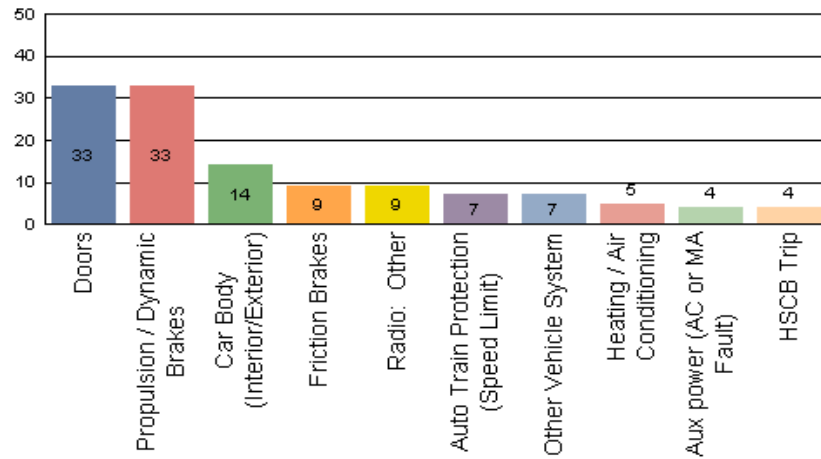
*Repeat Failure: When a train car has two or more major repeat problems/failures.*

# Reported Incidents

## April 2009

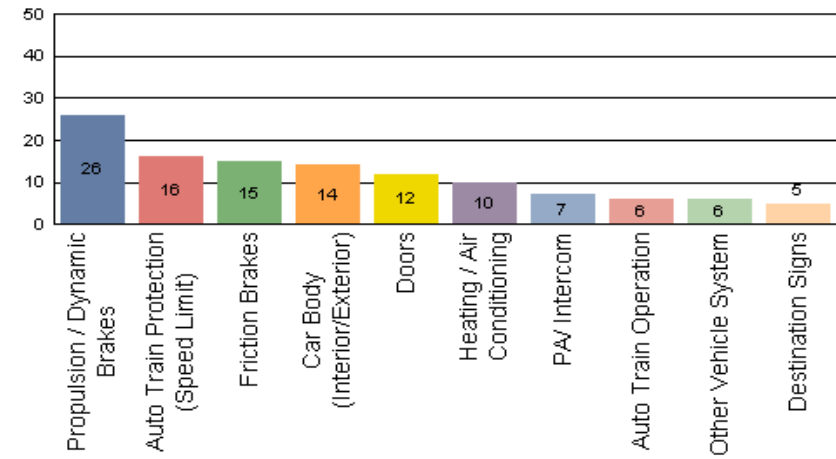
### Metro Blue Line

Count of the Top 10 Incident Problems



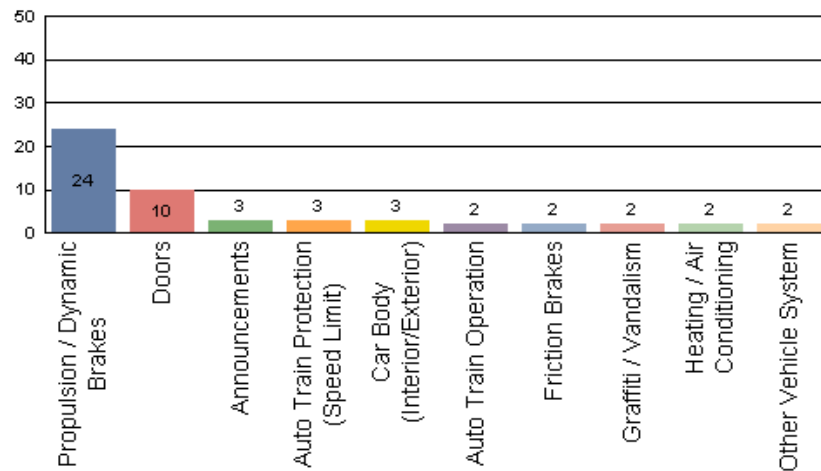
### Metro Red Line

Count of the Top 10 Incident Problems



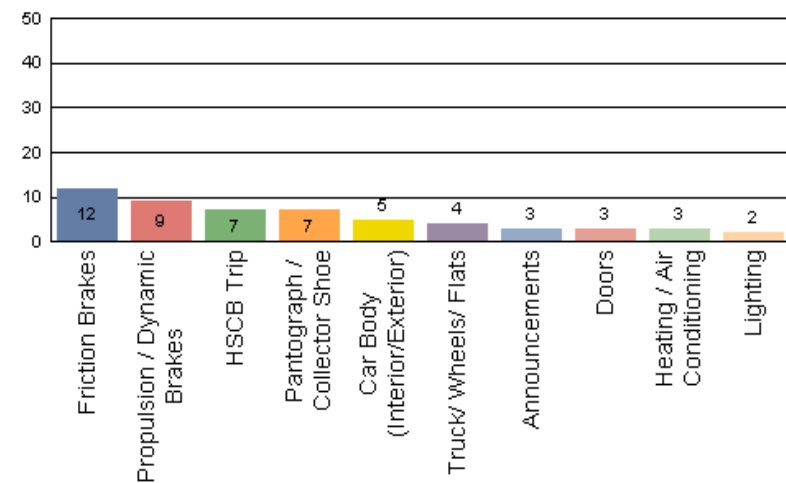
### Metro Green Line

Count of the Top 10 Incident Problems



### Metro Gold Line

Count of the Top 10 Incident Problems



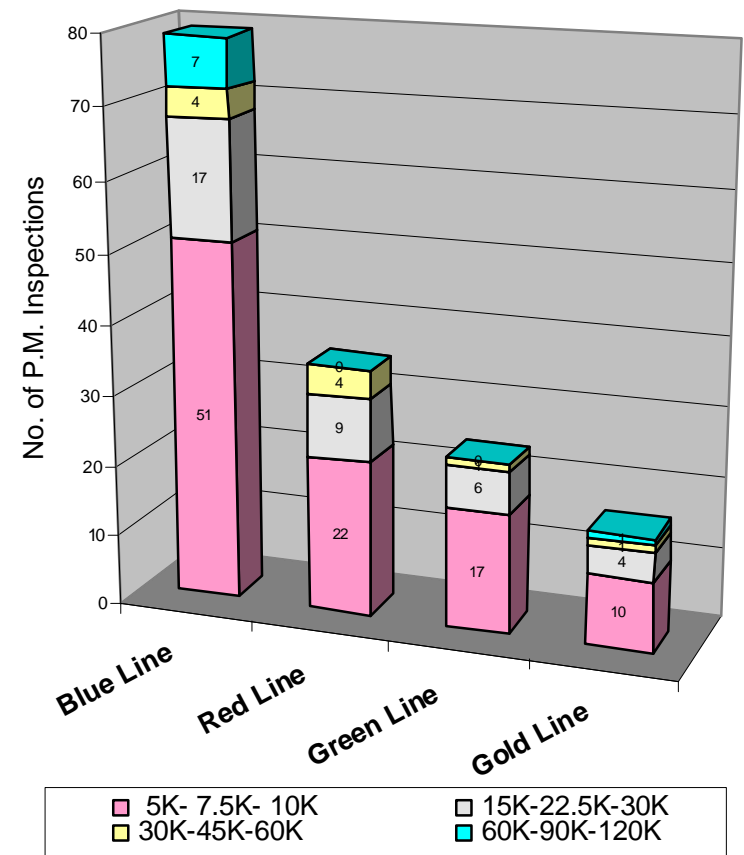
# Preventative Maintenance Compliance

## April 2009

Averages	May-08	Jun-08	Jul-08	Aug-08	Sep-08	Oct-08	Nov-08	Dec-08	Jan-09	Feb-09	Mar-09	Apr-09
<b>Blue Line</b>	<b>100%</b>	<b>97%</b>	<b>100%</b>	<b>100%</b>	<b>96%</b>	<b>100%</b>	<b>100%</b>	<b>100%</b>	<b>100%</b>	<b>100%</b>	<b>100%</b>	<b>100%</b>
<b>Red Line</b>	<b>100%</b>	<b>80%</b>	<b>100%</b>	<b>100%</b>	<b>100%</b>	<b>100%</b>	<b>100%</b>	<b>100%</b>	<b>100%</b>	<b>100%</b>	<b>100%</b>	<b>100%</b>
<b>Green Line</b>	<b>100%</b>	<b>100%</b>	<b>100%</b>	<b>100%</b>	<b>100%</b>	<b>100%</b>	<b>100%</b>	<b>100%</b>	<b>100%</b>	<b>93%</b>	<b>97%</b>	<b>100%</b>
<b>Gold Line</b>	<b>100%</b>	<b>100%</b>	<b>100%</b>	<b>100%</b>	<b>100%</b>	<b>100%</b>	<b>100%</b>	<b>100%</b>	<b>100%</b>	<b>100%</b>	<b>100%</b>	<b>100%</b>

### April 2009 Preventative Maintenance Inspections

No. of P.M. Inspections	5K-7.5K-10K	15K-22.5K-30K	30K-45K-60K	60K-90K-120K	Totals	Percent Compliance
<b>Blue Line</b>	51	17	4	7	79	100%
<b>Red Line</b>	22	9	4	0	35	100%
<b>Green Line</b>	17	6	1	0	24	100%
<b>Gold Line</b>	10	4	1	1	16	100%
<b>Totals:</b>	100	36	10	8	154	100%



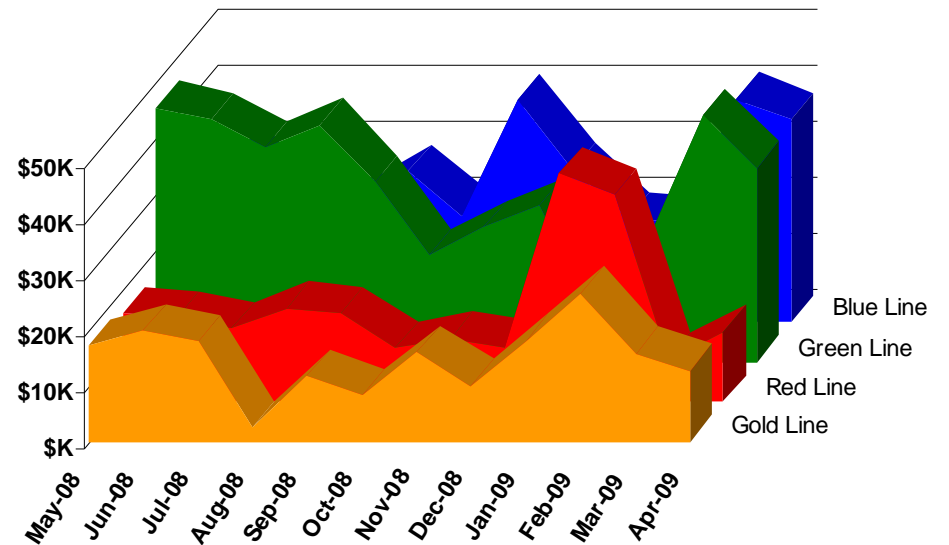
# Vandalism & Graffiti Report

## April 2009

### Graffiti Costs - April 2009

	May-08	Jun-08	Jul-08	Aug-08	Sep-08	Oct-08	Nov-08	Dec-08	Jan-09	Feb-09	Mar-09	Apr-09	Year-to-Date
Blue Line	\$22K	\$30K	\$19K	\$21K	\$27K	\$19K	\$40K	\$28K	\$18K	\$18K	\$40K	\$31K	\$438K
Red Line	\$16K	\$15K	\$13K	\$17K	\$16K	\$10K	\$11K	\$10K	\$41K	\$37K	\$8K	\$12K	\$206K
Green Line	\$46K	\$43K	\$38K	\$42K	\$32K	\$19K	\$24K	\$28K	\$9K	\$21K	\$44K	\$35K	\$382K
Gold Line	\$17K	\$20K	\$18K	\$2K	\$12K	\$8K	\$16K	\$10K	\$18K	\$27K	\$16K	\$13K	\$177K
Totals:	\$101K	\$109K	\$88K	\$83K	\$87K	\$56K	\$91K	\$76K	\$86K	\$103K	\$108K	\$91K	\$1,079K

April 2009 Vandalism & Graffiti - All Rail				
	Qty	Labor	Materials	Totals
Windows replaced	79	\$4,977	\$10,676	\$ 15,653
Vandal Shields	567	\$13,992	\$6,728	\$ 20,720
Vandal Shields - Other	14	\$221	\$93	\$ 313
Seats Cleaned	5,481	\$13,958	\$0	\$ 13,958
Seats Replaced	82	\$2,584	\$4,235	\$ 6,819
Ext/Int Repairs	1,274	\$20,792	\$9,168	\$ 29,960
Exterior Graffiti Clean		\$3,885	\$23	\$ 3,908
Totals for April 2009		\$60,408	\$30,923	\$ 91,331



# Vandalism & Graffiti Pictures

April 2009

A



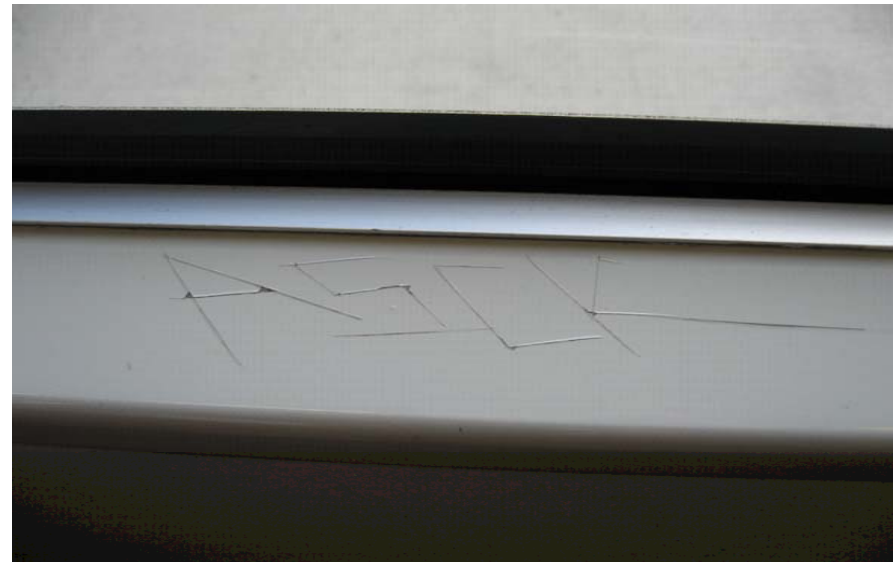
B



C



D

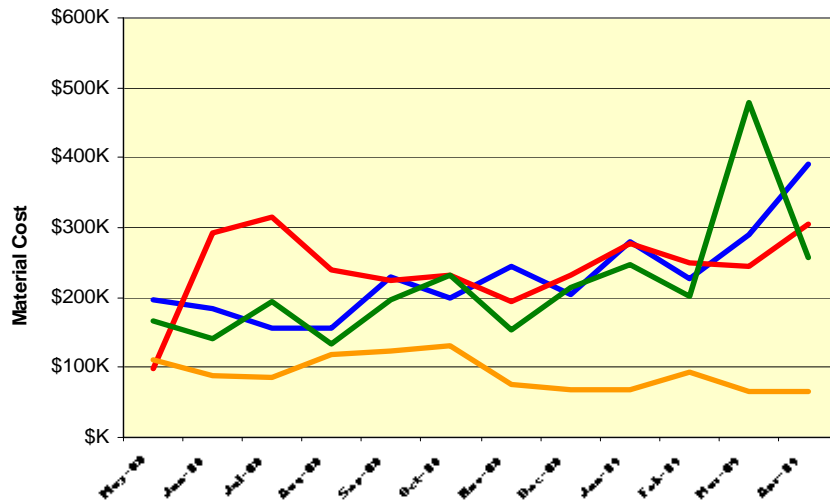


# Material and Labor Costs

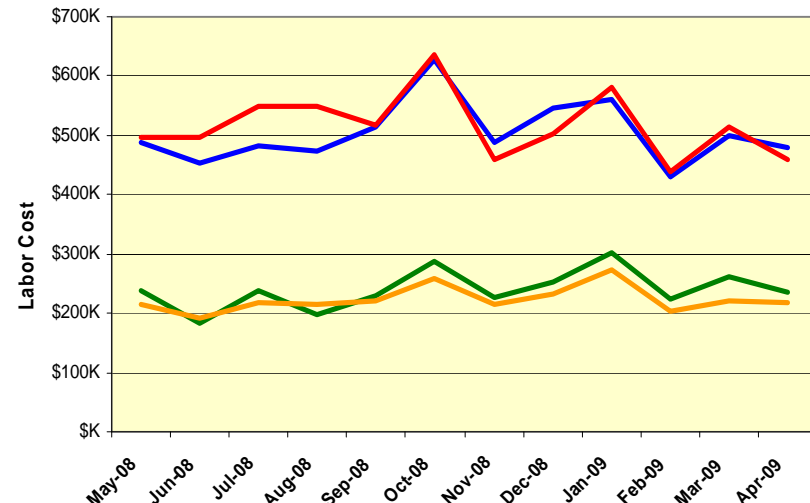
## April 2009

<b>MATERIALS</b>	May-08	Jun-08	Jul-08	Aug-08	Sep-08	Oct-08	Nov-08	Dec-08	Jan-09	Feb-09	Mar-09	Apr-09	Totals
Blue Line	\$197K	\$185K	\$156K	\$157K	\$230K	\$199K	\$244K	\$204K	\$279K	\$227K	\$289K	\$390K	\$2,758K
Red Line	\$99K	\$292K	\$314K	\$240K	\$225K	\$232K	\$193K	\$232K	\$277K	\$249K	\$244K	\$306K	\$2,904K
Green Line	\$166K	\$142K	\$194K	\$133K	\$195K	\$233K	\$153K	\$214K	\$248K	\$202K	\$479K	\$257K	\$2,617K
Gold Line	\$110K	\$88K	\$85K	\$118K	\$123K	\$132K	\$74K	\$68K	\$69K	\$92K	\$65K	\$66K	\$1,090K
<b>Totals</b>	<b>\$572K</b>	<b>\$707K</b>	<b>\$750K</b>	<b>\$649K</b>	<b>\$774K</b>	<b>\$795K</b>	<b>\$665K</b>	<b>\$717K</b>	<b>\$873K</b>	<b>\$771K</b>	<b>\$1,077K</b>	<b>\$1,019K</b>	<b>\$9,370K</b>

**Material Costs**



**Labor Costs**

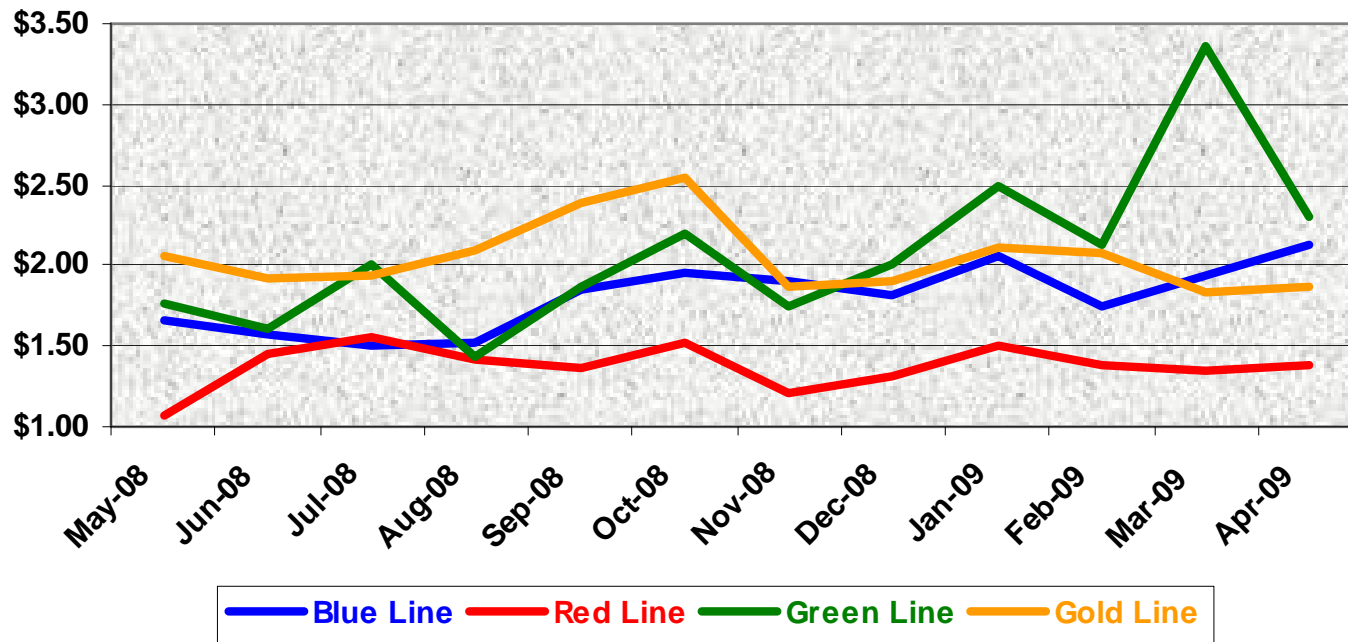


<b>LABOR</b>	May-08	Jun-08	Jul-08	Aug-08	Sep-08	Oct-08	Nov-08	Dec-08	Jan-09	Feb-09	Mar-09	Apr-09
Blue Line	\$487K	\$454K	\$483K	\$473K	\$513K	\$628K	\$489K	\$547K	\$560K	\$429K	\$501K	\$480K
Red Line	\$498K	\$496K	\$549K	\$548K	\$516K	\$637K	\$460K	\$503K	\$579K	\$440K	\$516K	\$459K
Green Line	\$239K	\$184K	\$237K	\$196K	\$229K	\$287K	\$227K	\$252K	\$302K	\$225K	\$261K	\$236K
Gold Line	\$216K	\$192K	\$217K	\$214K	\$220K	\$260K	\$214K	\$233K	\$272K	\$205K	\$221K	\$218K
<b>Totals</b>	<b>\$1,440K</b>	<b>\$1,326K</b>	<b>\$1,486K</b>	<b>\$1,431K</b>	<b>\$1,479K</b>	<b>\$1,812K</b>	<b>\$1,390K</b>	<b>\$1,535K</b>	<b>\$1,713K</b>	<b>\$1,298K</b>	<b>\$1,498K</b>	<b>\$1,392K</b>

# Cost Per Mile

## April 2009

Cost per mile:	May-08	Jun-08	Jul-08	Aug-08	Sep-08	Oct-08	Nov-08	Dec-08	Jan-09	Feb-09	Mar-09	Apr-09	Average
Blue Line	\$1.66	\$1.58	\$1.51	\$1.52	\$1.84	\$1.95	\$1.90	\$1.82	\$2.06	\$1.75	\$1.94	\$2.12	\$1.76
Red Line	\$1.07	\$1.45	\$1.55	\$1.42	\$1.36	\$1.53	\$1.20	\$1.31	\$1.50	\$1.39	\$1.35	\$1.38	\$1.38
Green Line	\$1.76	\$1.61	\$2.01	\$1.43	\$1.87	\$2.19	\$1.75	\$2.01	\$2.50	\$2.12	\$3.36	\$2.31	\$1.90
Gold Line	\$2.06	\$1.91	\$1.94	\$2.10	\$2.40	\$2.54	\$1.86	\$1.90	\$2.12	\$2.08	\$1.83	\$1.86	\$2.09



No facility costs are included



# Rail Fleet Services Instruction

## April 2009

### Training classes completed during the month of April 2009

April 2009

Description	Status	Start	End	Course Hours	Student Count	Training Hours
<b>Blue Line Training (Nippon Sharyo P865/P2020 LRV):</b>						
RFS 2-WEEK RAIL INTRODUCTION	Complete	4/6/2009	4/17/2009	64	1	64
SAFETY INTRO	Complete	4/6/2009	4/17/2009	16	1	16
P-CARD TRAINING FOR CARD HOLDERS AND AOS	Complete	4/14/2009	4/14/2009	2	1	2
ETD VALUING DIVERSITY	Complete	4/9/2009	4/9/2009	3	2	6
MOP RECORDS MANAGEMENT	Complete	4/21/2009	4/21/2009	2	1	2
SUSTAINABILITY AWARENESS TRAINING	Complete	4/7/2009	4/30/2009	2	3	6
PERSONAL PROTECTIVE EQUIPMENT	Complete	4/26/2009	4/26/2009	2	1	2
Safety (Video)	Complete	4/16/2009	4/16/2009	2	4	8
WORD 2003 - BEGINNER	Complete	4/22/2009	4/22/2009	6	1	6
MICROSOFT WINDOWS XP - BEGINNER	Complete	4/7/2009	4/7/2009	3	1	3
FIRST AID AND PREPAREDNESS	Complete	4/2/2009	4/2/2009	3	1	3
RFS SIEMENS TRAINING	Complete	3/27/2009	4/6/2009	124	3	372

**Total Blue Line Training (Hours): 490**

<b>Red Line Training (Breda A650 HRV):</b>						
PERSONAL PROTECTIVE EQUIPMENT	Complete	4/18/2009	4/28/2009	2	8	16
VEHICLE SYSTEMS	Complete	4/21/2009	4/29/2009	40	5	200
Safety (Video)	Complete	4/20/2009	4/23/2009	2	5	10
SUSTAINABILITY AWARENESS TRAINING	Complete	4/30/2009	4/30/2009	2	2	4
FRONTLINE SAFETY TRAINING	Complete	4/27/2009	4/27/2009	3	2	6
RFS 2-WEEK RAIL INTRODUCTION	Complete	4/6/2009	4/17/2009	64	2	128
SAFETY INTRO	Complete	4/6/2009	4/17/2009	16	2	32
FORKLIFT TRAINING	Complete	4/6/2009	4/6/2009	2	2	4
NEO - NEW EMPLOYEE ORIENTATION	Complete	4/6/2009	4/6/2009	4	2	8
OSHA 300 LOG FOR RAIL	Complete	4/23/2009	4/23/2009	3	2	6
MOP SEXUAL HARASSMENT PREVENTION AND TITLE VII	Complete	4/14/2009	4/14/2009	2	2	4
POWERPOINT 2003 - BEGINNER	Complete	4/13/2009	4/13/2009	6	1	6
MOP EAP AS A SUPERVISORY TOOL	Complete	4/9/2009	4/9/2009	1.5	2	3

**Total Red Line Training (Hours): 427**

<b>Green Line Training (Siemens P2000 LRVs):</b>						
ETD BUSINESS WRITING SKILLS	Complete	4/28/2009	4/28/2009	3	2	6
DIRECT DEPOSIT SELF SERVICE TRAINING	Complete	4/8/2009	4/8/2009	0.75	1	0.75
RFS SIEMENS 2000 COUPLER	Complete	4/29/2009	4/30/2009	8	3	24
RFS SIEMENS 2000 T/B, SANDERS	Complete	4/29/2009	4/29/2009	4	3	12
RFS SIEMENS 2000 TRUCK	Complete	4/20/2009	4/27/2009	24	3	72
RFS SIEMENS 2000 HVAC	Complete	4/7/2009	4/17/2009	64	3	192
RFS SIEMENS 2000 DOOR CONTROLS	Complete	3/27/2009	4/6/2009	24	3	72
FRONTLINE SAFETY TRAINING	Complete	4/27/2009	4/27/2009	3	3	9
RFS 2-WEEK RAIL INTRODUCTION	Complete	4/6/2009	4/17/2009	64	3	192
SAFETY INTRO	Complete	4/6/2009	4/17/2009	16	3	48
FORKLIFT TRAINING	Complete	4/13/2009	4/13/2009	2	3	6
NEO - NEW EMPLOYEE ORIENTATION	Complete	4/6/2009	4/6/2009	4	3	12
P-CARD TRAINING FOR CARD HOLDERS AND AOS	Complete	4/14/2009	4/14/2009	2	1	2
HAZARD COMMUNICATION TRAINING	Complete	4/16/2009	4/16/2009	4	1	4
OSHA 300 LOG FOR RAIL	Complete	4/23/2009	4/23/2009	3	1	3

**Total Green Line Training (Hours): 306.75**

#### Gold Line Training (P2550 & P2000 LRVs):

0

**Total Gold Line Training (Hours): 0**

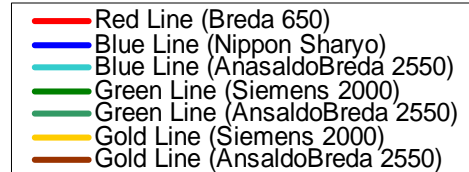
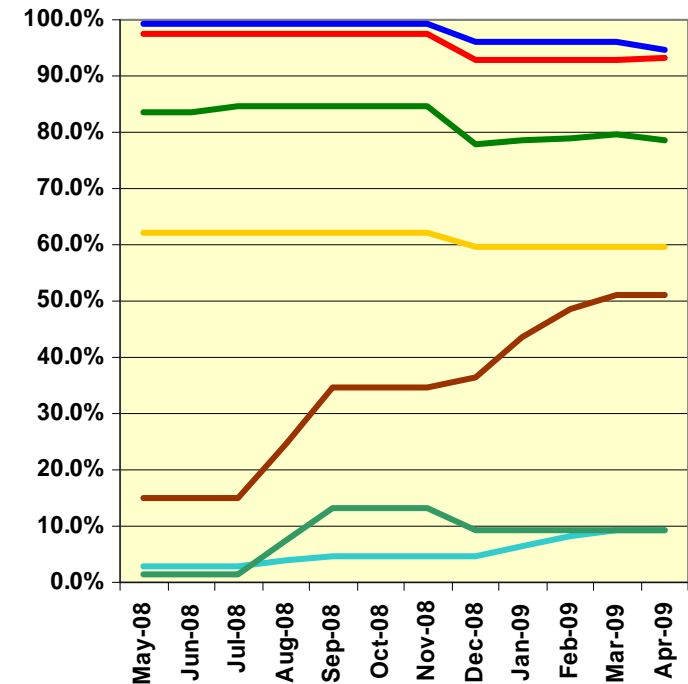
**Total Rail Fleet Services Instruction for the month of April 2009 (Hours): 1,223.8**

#### Core Vehicle Training Completed:

	BLUE	RED	GREEN	GOLD
Percentage of core vehicle training complete:	94.5%	93.3%	78.4%	59.6%
AnsaldoBreda 2550 Training Completed:	9.2%	N/A	9.3%	51.1%

Average Specialist Rail Experience Level in Years: 10.0 8.1 7.5 7.8

### Core Training Completed



Variations caused by new hires, employee transfers, & training completed



**Metro**



# Absences vs. Overtime

## April 2009

ABSENCE TYPE and HOURS	3940	3941	3942	3943	3944	Total
AWP-ABSENT W/O PERMISSION	0.00	16.00	0.00	0.00	0.00	16.00
BER-BEREAVEMENT	0.00	96.00	40.00	40.00	8.00	184.00
CTO-COMPENSATORY TIME OFF	16.00	311.97	185.93	230.00	151.50	895.40
CVA - CASUAL VACATION	104.00	15.50	726.00	0.00	0.00	845.50
DSL-DISABILITY LEAVE/LONG	0.00	360.00	528.00	0.00	176.00	1,064.00
EFH-EMG. FLOAT HOL.	0.00	0.00	32.00	16.00	16.00	64.00
ETO-EXCUSED TIME OFF	2.00	30.50	9.49	3.00	3.50	48.49
FML-FAMILY CARE LEAVE	0.00	201.40	36.00	57.00	0.00	294.40
HLF-HOLIDAY FLOATING	48.00	192.00	216.00	152.00	212.00	820.00
II-INDUSTRIAL INJURY	0.00	0.00	8.00	0.00	0.00	8.00
JUR-JURY DUTY	0.00	88.00	104.00	8.00	16.00	216.00
LC1-LABOR CODE 233	40.00	313.17	313.58	129.50	84.00	880.25
LTI-OCCPIL/LONGTRM INJ LEAVE	0.00	176.00	288.00	0.00	0.00	464.00
OWP-OFF WITH PERMISSION	0.00	0.00	10.50	0.00	0.00	10.50
RTO-REQUESTED TIME OFF-NO PAY	0.00	18.50	0.00	8.00	0.00	26.50
SCK-SICK PAY	16.00	205.00	320.00	24.00	144.00	709.00
SCW-SICK WITHOUT PAY	0.00	8.00	40.00	24.00	24.00	96.00
SUP-TEMPORARY SUPERVISOR	0.00	314.56	240.40	185.33	224.00	964.29
VAC-VACATION	0.00	522.00	52.00	344.00	262.00	1,180.00
<b>Total</b>	<b>226.00</b>	<b>2,868.60</b>	<b>3,149.90</b>	<b>1,220.83</b>	<b>1,321.00</b>	<b>8,786.33</b>
OVERTIME TYPE and HOURS	3940	3941	3942	3943	3944	Total
CTB-COMPENSATORY TIME TO BANK	0.00	90.13	43.43	51.03	8.00	192.59
OTP-PREM OVERTIME	297.50	658.35	602.70	823.95	464.01	2,846.51
WLO-Worked Lunch Overtime	0.00	15.45	67.50	15.84	9.50	108.29
<b>Total</b>	<b>297.50</b>	<b>763.93</b>	<b>713.63</b>	<b>890.82</b>	<b>481.51</b>	<b>3,147.39</b>
UNCOVERED ABSENCES	3940	3941	3942	3943	3944	Total
Absences FTE	1.30	16.55	18.17	7.04	7.62	50.69
OTP FTE	1.72	4.41	4.12	5.14	2.78	18.16
<b>FTE Difference</b>	<b>-0.41</b>	<b>12.14</b>	<b>14.06</b>	<b>1.90</b>	<b>4.84</b>	<b>32.53</b>

