



Rail Fleet Services Monthly Report August 2009



Metro

Table of Contents

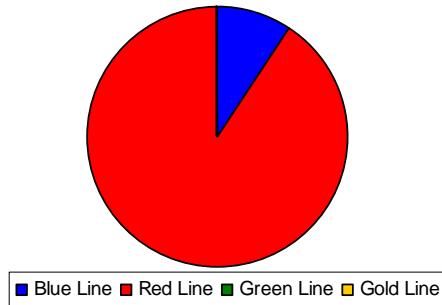
• Safety	
– Industrial Injuries	Page 1
– Rail Vehicle Accidents & Major Incidents	Page 2
• Customer Service	
– Service Delivery – AM/PM Pull-Outs	Page 3
– Vehicle Utilization – Blue Line & Green Line	Page 4
– Vehicle Utilization – Red Line & Gold Line	Page 5
– Mean Miles Between Failures (Major)	Page 6
– Repeaters (Major)	Page 7
• Business Processes	
– Incident Problems	Page 8
– Preventative Maintenance Compliance	Page 9
• Finance	
– Vandalism & Graffiti Costs	Page 10
– Graffiti Pictures	Page 11
– Material & Labor Costs	Page 12
– Cost per mile	Page 13
• Growth	
– Rail Fleet Service Training	Page 14
– Absences vs. Overtime	Page 15

Industrial Injuries – Lost Work Hours

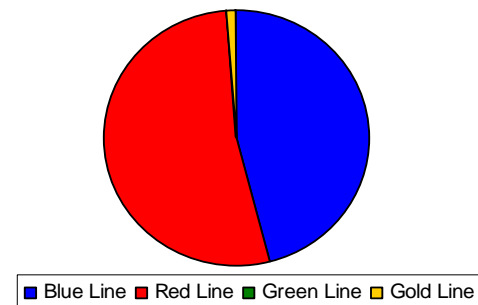
August 2009

	Sep-08	Oct-08	Nov-08	Dec-08	Jan-09	Feb-09	Mar-09	Apr-09	May-09	Jun-09	Jul-09	Aug-09	Year to Date
Blue Line	320	352	328	512	400	488	280	176	160	208	144	48	3,416
Red Line	264	352	328	360	280	264	312	296	344	352	328	456	3,936
Green Line	0	0	0	0	0	0	0	0	0	0	0	0	0
Gold Line	0	0	0	80	8	0	0	0	0	0	0	0	88
Totals	584	704	656	952	688	752	592	472	504	560	472	504	7,440

August 2009 - Lost Work Hours



Year-to-Date Lost Work Hours



	Employees		August 2009 Lost Work Hours			
	Assigned	Active	Service Attendant	Maint. Specialist	E R S	August 2009 Total Hrs.
Blue Line	108	103	0	48	0	48
Red Line	108	100	352	0	104	456
Green Line	49	49	0	0	0	0
Gold Line	52	50	0	0	0	0
Totals	317	302	352	48	104	504
Total Lost Work Hours for 12-months = 7,440 hours						

Rail Vehicle Accidents & Major Incidents

August 2009

Repair Costs	Sep-08	Oct-08	Nov-08	Dec-08	Jan-09	Feb-09	Mar-09	Apr-09	May-09	Jun-09	Jul-09	Aug-09	Totals
Blue Line	\$55,579	\$1,672	\$1,312	\$20,456	\$79,318	\$3,716	\$9,500	\$111	\$1,480	\$189	\$9,262	\$0	\$173,333
Red Line	\$0	\$0	\$0	\$0	\$0	\$0	\$0	\$0	\$104,950	\$0	\$0	\$0	\$104,950
Green Line	\$15,758	\$0	\$4,181	\$0	\$0	\$0	\$0	\$0	\$0	\$2,481	\$0	\$0	\$22,420
Gold Line	\$0	\$0	\$0	\$0	\$0	\$0	\$1,231	\$3,235	\$0	\$189	\$0	\$0	\$4,655
Totals	\$71,337	\$1,672	\$5,493	\$20,456	\$79,318	\$3,716	\$10,731	\$3,346	\$106,430	\$2,859	\$9,262	\$0	\$305,358



Accident-Free

(Metro Blue Line, Metro Red Line, Metro Green Line and Metro Gold Line)

for the month of August 2009

Service Delivery – AM/PM Pull-Outs

August 2009

Cars Available for AM/PM Pull-Outs

Blue Line – Fleet Size 69 cars

- Weekday pull-out: 60 cars
- Weekend pull-out: 36 cars
- **Monthly Mileage: 411,994 miles**

Red Line - Fleet Size 104 cars

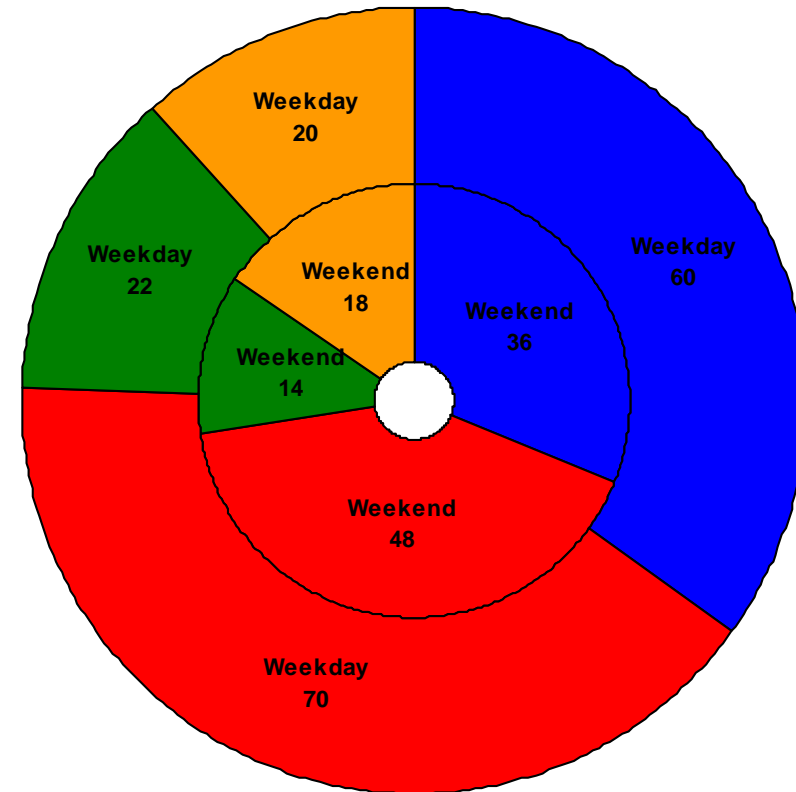
- Weekday pull-out: 70 cars
- Weekend pull-out: 48 cars
- **Monthly Mileage: 530,180 miles**

Green Line – Fleet Size 28 cars

- Weekday pull-out: 22 cars
- Weekend pull-out: 14 cars
- **Monthly Mileage: 216,776 miles**

Gold Line – Fleet Size 49 cars

- Weekday pull-out: 20 cars
- Weekend pull-out: 18 cars
- **Monthly Mileage: 152,985 miles**

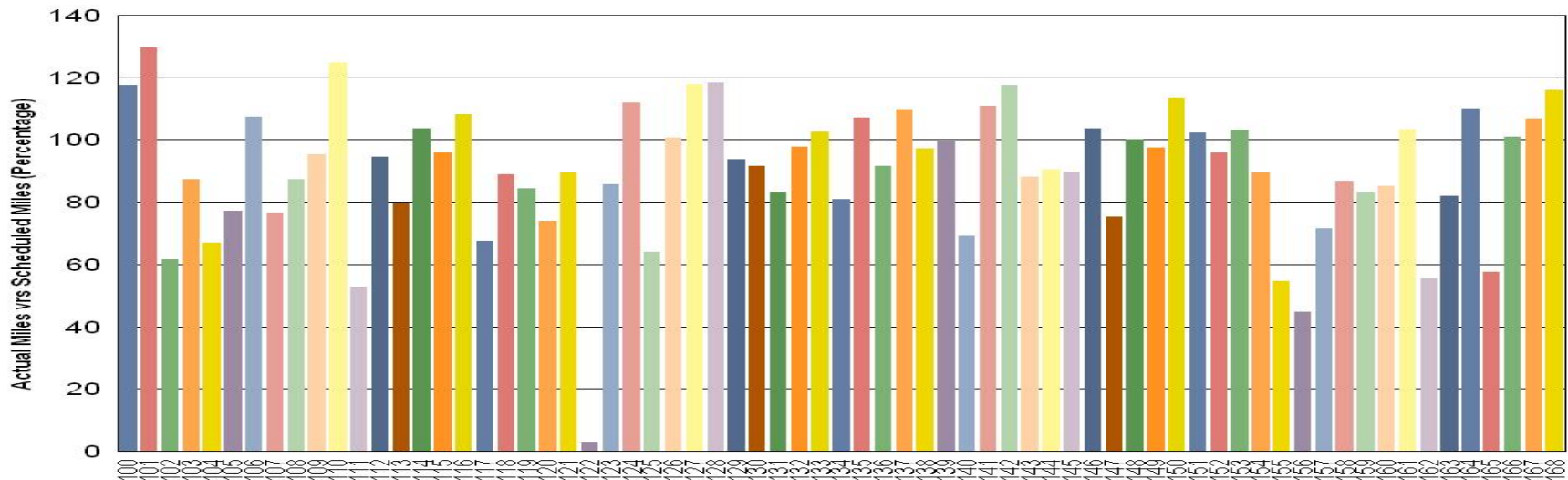


■ Blue Line ■ Red Line ■ Green Line ■ Gold Line

VEHICLE UTILIZATION

August 2009

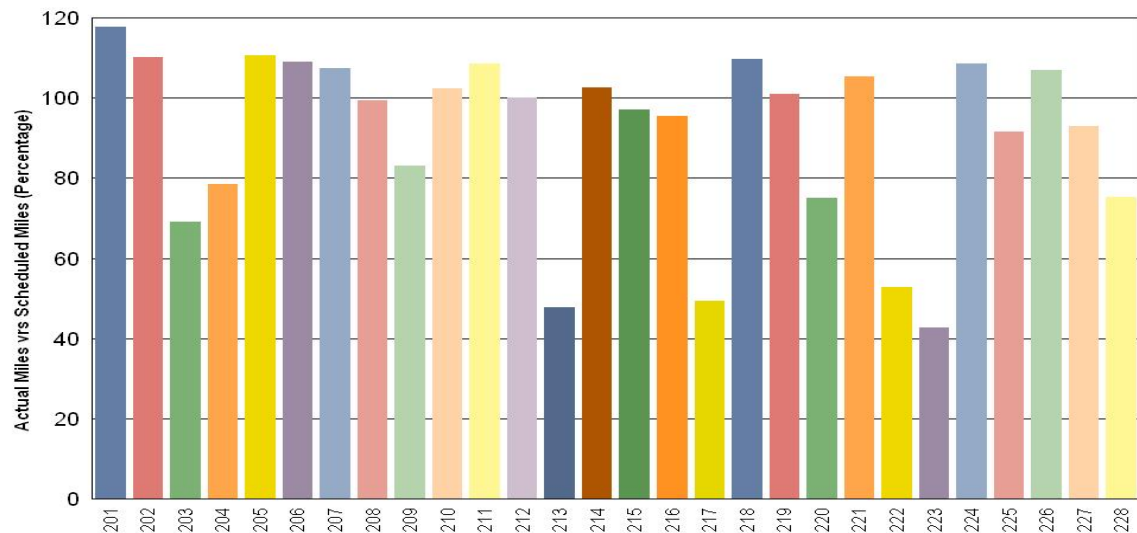
Metro Blue Line



Blue Line Car 122 was in the Body Shop for Roof Repairs.

Percentage includes an average 4% mileage deduction for Yard mileage and Vehicle Testing.

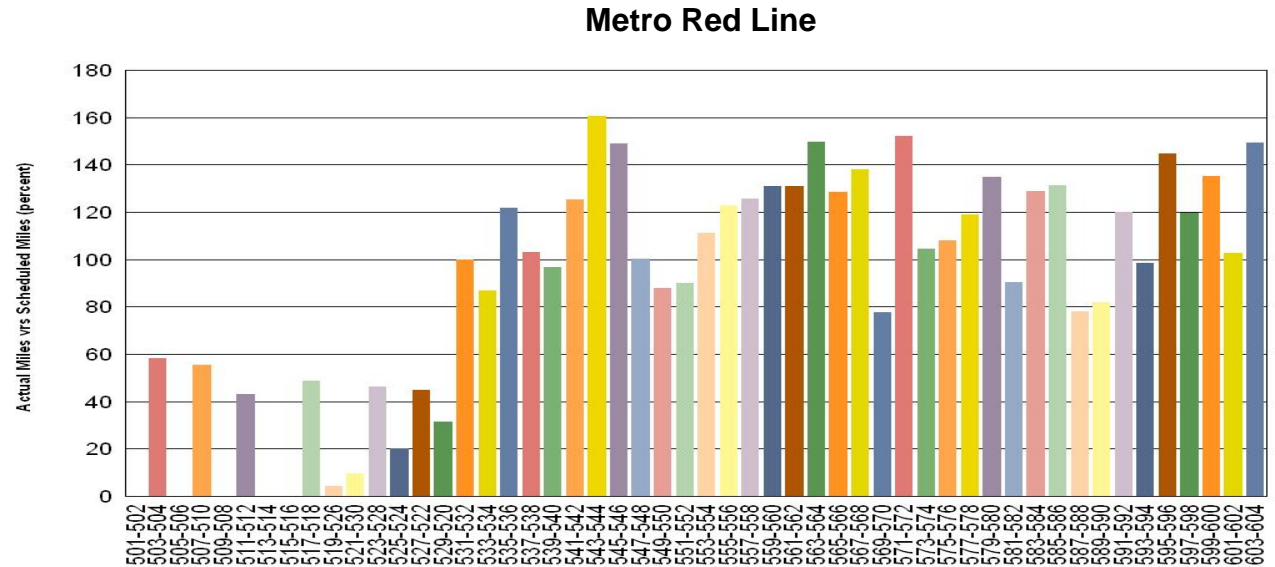
Metro Green Line



VEHICLE UTILIZATION

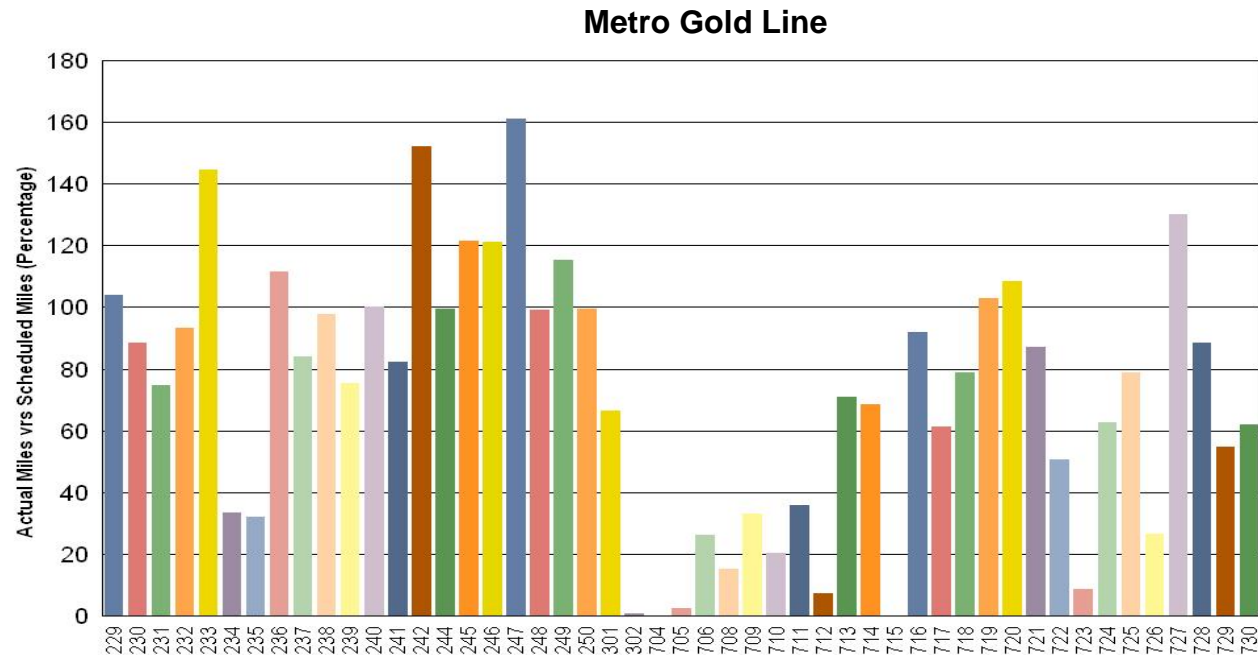
August 2009

Red Line - The original 30 Base Buy cars are not being used to their fullest potential for various reasons such as propulsion, brake and coupling incident problems so the remaining Option Buy cars are forced to pick up the slack.



Gold Line has 49 cars assigned vs. 20 cars pull out required; thus 160% car availability. Also, Cars 704, 706, 708, 709, 710 & 712 are cars used for Eastside testing.

Percentage includes an average 4% mileage deduction for Yard mileage and Vehicle Testing.



Mean Miles Between Failures (Major) August 2009

Miles Between Major Failures

Blue Line: 17,166 miles (24 Major Failures)

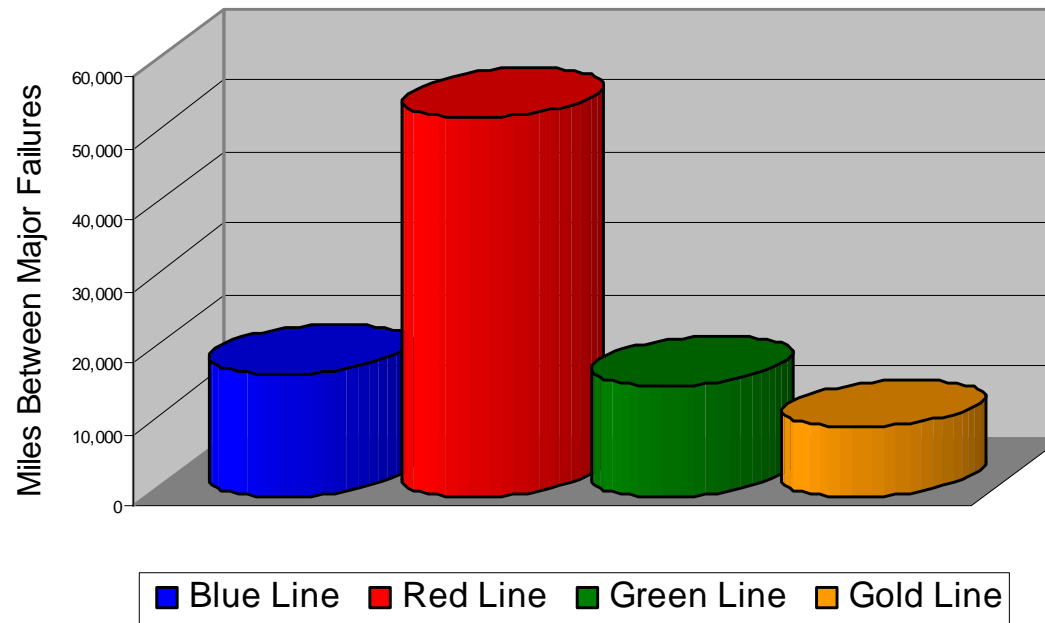
Red Line: 53,018 miles (10 Major Failures)

Green Line: 15,484 miles (14 Major Failures)

Gold Line: 9,562 miles (16 Major Failures)

Siemens P2000 12,879 miles (7 Major Failures)

AnsaldoBreda P2550 6,981 miles (9 Major Failures)



Major Failure: When a train does not complete its scheduled run or is more than 5 minutes late of its scheduled arrival time.

Repeat Failures August 2009

Metro Blue Line:

6 Repeat Failures

Metro Red Line:

7 Repeat Failures

Metro Green Line:

1 Repeat Failure

Metro Gold Line:

1 Repeat Failure



■ Blue Line ■ Red Line ■ Green Line ■ Gold Line

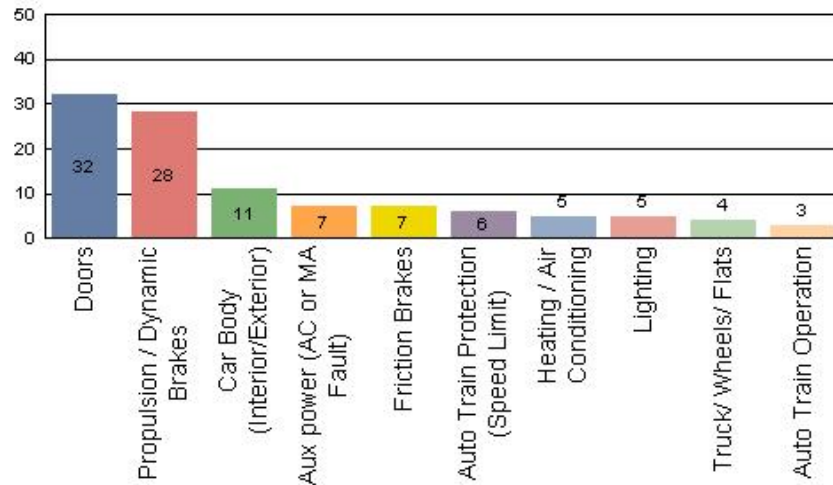
Repeater Car Details - August 2009								
System	Blue Line		Red Line		Green Line		Gold Line	
	Car #	Repeats	Car #	Repeats	Car #	Repeats	Car #	Repeats
ATP			529	1			708	1
			545	1				
Berthing					206	1		
Communication			587	1				
Destination Sign			541	1				
			599	1				
Doors	152	2						
HVAC			557	1				
Propulsion/Dynamic Brake	112	1	565	1				
	113	1						
	162	2						
TOTALS		6		7		1		1

Reported Incidents

August 2009

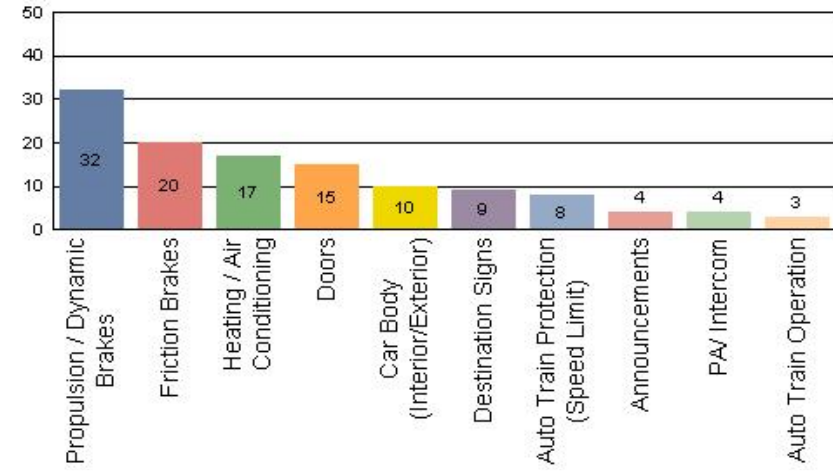
Metro Blue Line

Count of the Top 10 Incident Problems



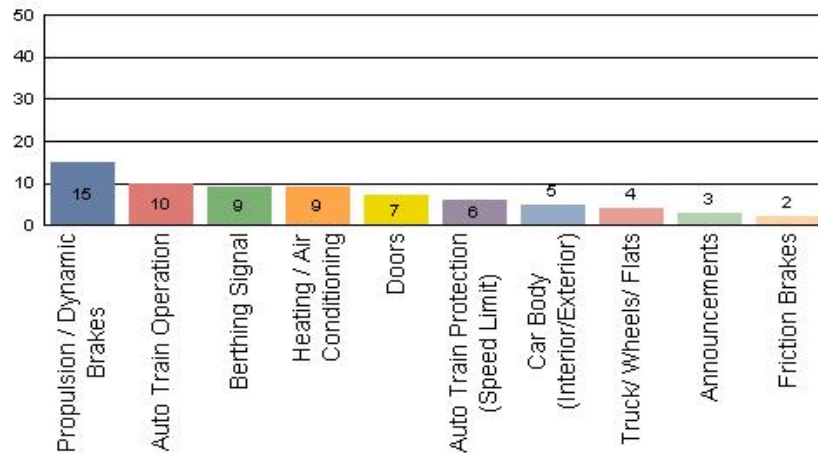
Metro Red Line

Count of the Top 10 Incident Problems



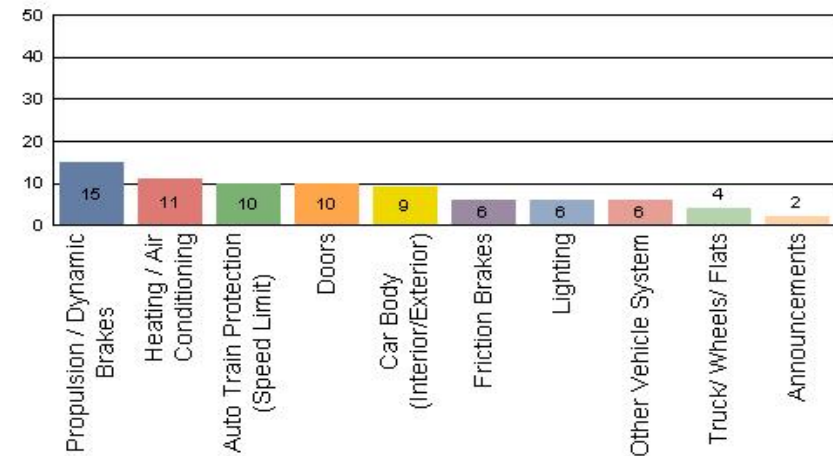
Metro Green Line

Count of the Top 10 Incident Problems



Metro Gold Line

Count of the Top 10 Incident Problems



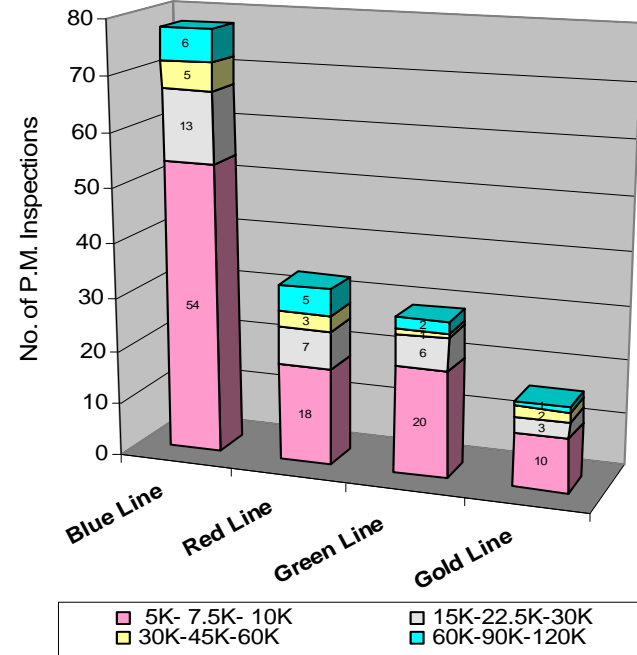
Preventative Maintenance Compliance

August 2009

Averages	Sep-08	Oct-08	Nov-08	Dec-08	Jan-09	Feb-09	Mar-09	Apr-09	May-09	Jun-09	Jul-09	Aug-09
Blue Line	96%	100%	100%	100%	100%	100%	100%	100%	100%	100%	100%	100%
Red Line	100%	100%	100%	100%	100%	100%	100%	100%	100%	100%	94%	100%
Green Line	100%	100%	100%	100%	100%	93%	97%	100%	100%	100%	100%	100%
Gold Line	100%	100%	100%	100%	100%	100%	100%	100%	100%	100%	100%	100%

August 2009 Preventative Maintenance Inspections

No. of P.M. Inspections	5K-7.5K-10K	15K-22.5K-30K	30K-45K-60K	60K-90K-120K	Totals	Percent Compliance
Blue Line	54	13	5	6	78	100%
Red Line	18	7	3	5	33	100%
Green Line	20	6	1	2	29	100%
Gold Line	10	3	2	1	16	100%
Totals:	102	29	11	14	156	100%



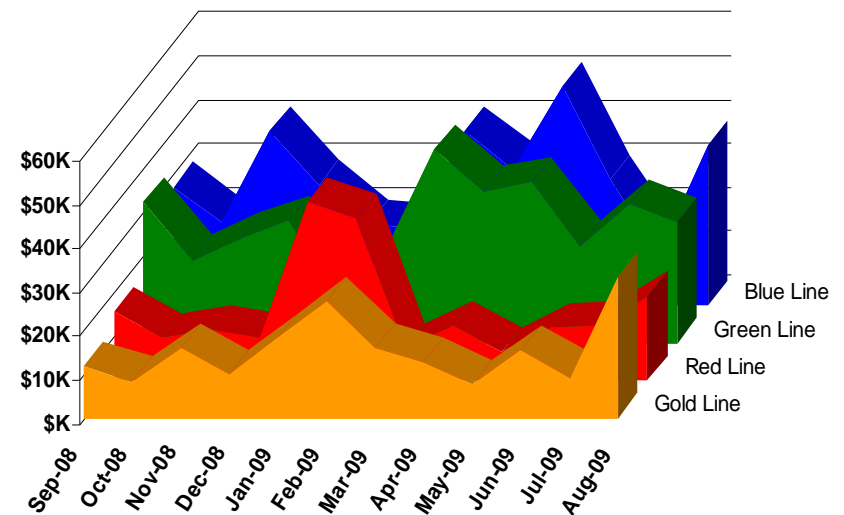
Vandalism & Graffiti Report

August 2009

Graffiti Costs - August 2009

	Sep-08	Oct-08	Nov-08	Dec-08	Jan-09	Feb-09	Mar-09	Apr-09	May-09	Jun-09	Jul-09	Aug-09	Year-to-Date
Blue Line	\$27,169	\$19,172	\$39,722	\$27,949	\$18,498	\$17,708	\$39,975	\$31,349	\$50,062	\$28,914	\$11,909	\$36,475	\$348,902
Green Line	\$31,715	\$19,070	\$11,424	\$28,128	\$40,809	\$37,117	\$44,211	\$34,775	\$36,921	\$22,307	\$31,788	\$27,501	\$365,766
Red Line	\$15,743	\$9,744	\$24,038	\$9,790	\$8,504	\$21,465	\$7,529	\$12,499	\$6,513	\$12,013	\$12,562	\$19,237	\$159,637
Gold Line	\$11,825	\$8,344	\$16,094	\$10,040	\$18,107	\$26,625	\$15,808	\$12,707	\$7,651	\$15,543	\$9,213	\$32,051	\$184,008
Totals	\$86,452	\$56,330	\$91,278	\$75,907	\$85,918	\$102,915	\$107,523	\$91,330	\$101,147	\$78,777	\$65,472	\$115,264	\$1,058,313

August 2009 Vandalism & Graffiti - All Rail				
	Qty	Labor	Materials	Totals
Windows replaced	112	\$9,765	\$22,027	\$ 31,792
Vandal Shields	471	\$10,757	\$6,018	\$ 16,775
Seats Cleaned	5,481	\$13,739	\$0	\$ 13,739
Seats Replaced	243	\$6,080	\$10,543	\$ 16,623
Ext/Int Repairs	1,378	\$31,961	\$4,374	\$ 36,335
Totals for August 2009		\$72,302	\$42,962	\$115,264



Vandalism & Graffiti Pictures

August 2009

A



B

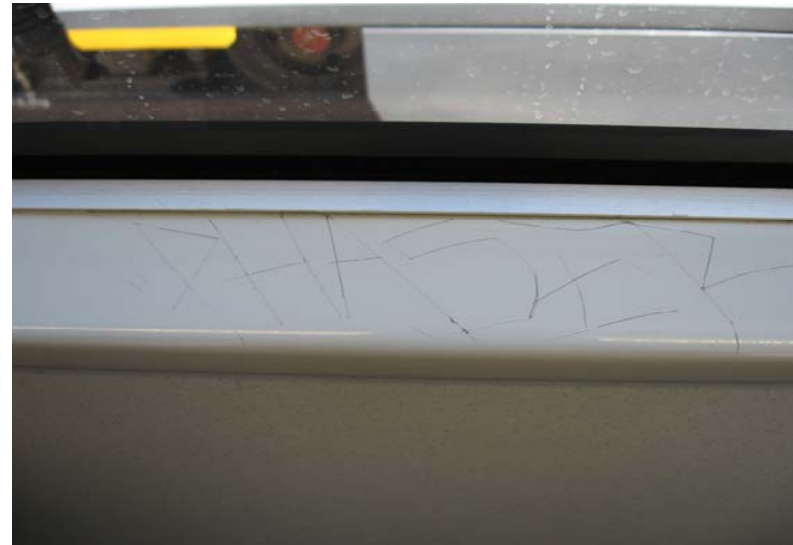


A & B - Metro Blue Line

C



D



C - Metro Green Line

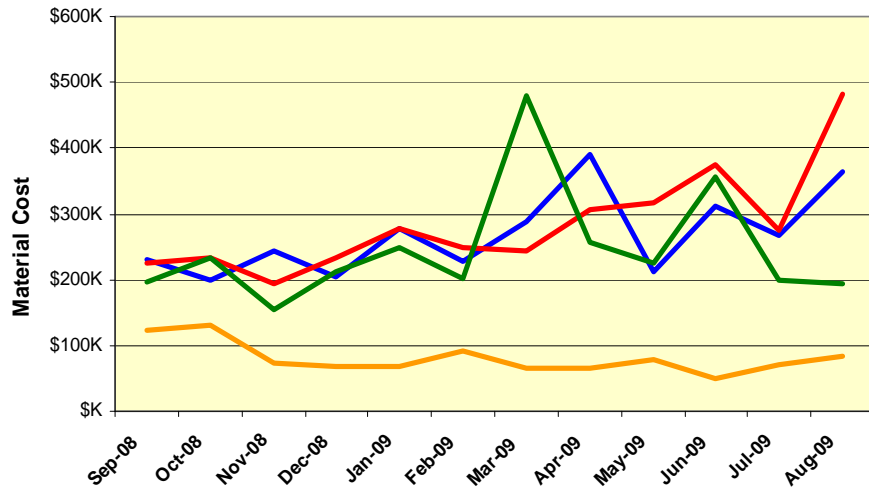
D - Metro Gold Line

Material and Labor Costs

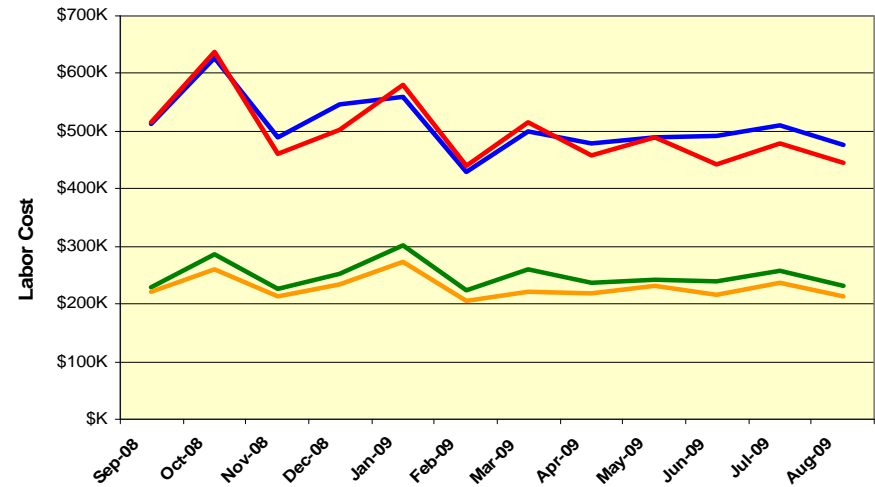
August 2009

MATERIALS	Sep-08	Oct-08	Nov-08	Dec-08	Jan-09	Feb-09	Mar-09	Apr-09	May-09	Jun-09	Jul-09	Aug-09	Totals
Blue Line	\$230K	\$199K	\$244K	\$204K	\$279K	\$227K	\$289K	\$390K	\$211K	\$311K	\$268K	\$364K	\$3,401K
Red Line	\$225K	\$232K	\$193K	\$232K	\$277K	\$249K	\$244K	\$306K	\$318K	\$375K	\$275K	\$483K	\$3,703K
Green Line	\$195K	\$233K	\$153K	\$214K	\$248K	\$202K	\$479K	\$257K	\$226K	\$356K	\$200K	\$195K	\$3,100K
Gold Line	\$123K	\$132K	\$74K	\$68K	\$69K	\$92K	\$65K	\$66K	\$78K	\$50K	\$71K	\$85K	\$1,060K
Totals	\$774K	\$795K	\$665K	\$717K	\$873K	\$771K	\$1,077K	\$1,019K	\$834K	\$1,092K	\$814K	\$1,126K	\$10,139K

Material Costs



Labor Costs



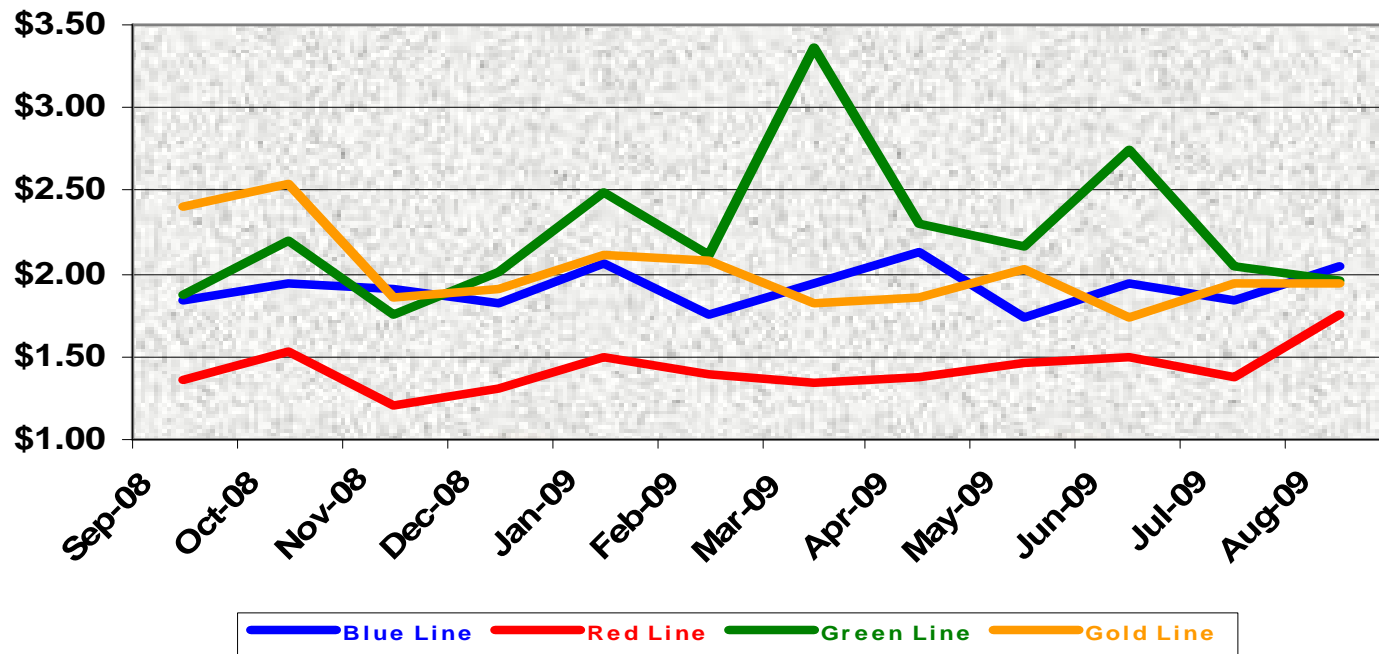
LABOR	Sep-08	Oct-08	Nov-08	Dec-08	Jan-09	Feb-09	Mar-09	Apr-09	May-09	Jun-09	Jul-09	Aug-09
Blue Line	\$513K	\$628K	\$489K	\$547K	\$560K	\$429K	\$501K	\$480K	\$490K	\$492K	\$510K	\$476K
Red Line	\$516K	\$637K	\$460K	\$503K	\$579K	\$440K	\$516K	\$459K	\$488K	\$443K	\$478K	\$445K
Green Line	\$229K	\$287K	\$227K	\$252K	\$302K	\$225K	\$261K	\$236K	\$241K	\$238K	\$257K	\$232K
Gold Line	\$220K	\$260K	\$214K	\$233K	\$272K	\$205K	\$221K	\$218K	\$232K	\$217K	\$238K	\$213K
Totals	\$1,479K	\$1,812K	\$1,390K	\$1,535K	\$1,713K	\$1,298K	\$1,498K	\$1,392K	\$1,452K	\$1,390K	\$1,483K	\$1,365K



Cost Per Mile

August 2009

Cost per mile:	Sep-08	Oct-08	Nov-08	Dec-08	Jan-09	Feb-09	Mar-09	Apr-09	May-09	Jun-09	Jul-09	Aug-09	Average
Blue Line	\$1.84	\$1.95	\$1.90	\$1.82	\$2.06	\$1.75	\$1.94	\$2.12	\$1.74	\$1.95	\$1.83	\$2.04	\$1.91
Red Line	\$1.36	\$1.53	\$1.20	\$1.31	\$1.50	\$1.39	\$1.35	\$1.38	\$1.46	\$1.49	\$1.37	\$1.75	\$1.42
Green Line	\$1.87	\$2.19	\$1.75	\$2.01	\$2.50	\$2.12	\$3.36	\$2.31	\$2.16	\$2.75	\$2.05	\$1.97	\$2.25
Gold Line	\$2.40	\$2.54	\$1.86	\$1.90	\$2.12	\$2.08	\$1.83	\$1.86	\$2.02	\$1.73	\$1.94	\$1.94	\$2.02



No facility costs are included

Rail Fleet Services Instruction

August 2009

August 2009

Description	Status	Start	End	Course Hours	Student Count	Training Hours
Blue Line Training - LRV:						
RFS ANSALDOBREDA 2550 DOORS	Complete	8/25/2009	8/31/2009	16	3	48
RFS ANSALDOBREDA 2550 FRICTION BRAKES	Complete	8/18/2009	8/24/2009	32	3	96
RFS ANSALDOBREDA 2550 A.T.P. & T.W.C.	Complete	8/3/2009	8/7/2009	32	3	96
DISABILITIES AWARENESS TRAINING	Complete	8/6/2009	8/6/2009	2	1	2
ETD PEOPLE SKILLS	Complete	8/5/2009	8/5/2009	3	1	3
BLOODBORNE PATHOGENS	Complete	8/27/2009	8/28/2009	2	2	4
PERSONAL PROTECTIVE EQUIPMENT	Complete	8/26/2009	8/26/2009	2	1	2
ETD COMMUNICATING ONE-ON-ONE	Complete	8/11/2009	8/11/2009	3	2	6
Fire Safety (Video)	Complete	8/13/2009	8/27/2009	2	2	4
Electrical Safety (Video)	Complete	8/11/2009	8/11/2009	2	1	2
HAZARD COMMUNICATION: IDENTIFYING THE DANGERS	Complete	8/7/2009	8/7/2009	2	1	2
Total Blue Line Training (Hours):						265
Red Line Training (Breda A650 HRV):						
MOP SEXUAL HARASSMENT PREVENTION AND TITLE VII	Complete	8/6/2009	8/6/2009	2	1	2
Total Red Line Training (Hours):						2
Green Line Training (P2550 & P2000 LRVs):						
BLOODBORNE PATHOGENS	Complete	8/5/2009	8/19/2009	2	6	12
MOP SEXUAL HARASSMENT PREVENTION AND TITLE VII	Complete	8/6/2009	8/6/2009	2	1	2
DISABILITIES AWARENESS TRAINING	Complete	8/6/2009	8/6/2009	2	1	2
Total Green Line Training (Hours):						16
Gold Line Training (P2550 & P2000 LRVs):						
RFS ANSALDOBREDA 2550 DOORS	Complete	8/25/2009	8/31/2009	16	4	64
RFS ANSALDOBREDA 2550 FRICTION BRAKES	Complete	8/18/2009	8/24/2009	32	4	128
RFS ANSALDOBREDA 2550 A.T.P. & T.W.C.	Complete	8/3/2009	8/7/2009	32	4	128
BLOODBORNE PATHOGENS	Complete	8/13/2009	8/20/2009	2	3	6
MOP SEXUAL HARASSMENT PREVENTION AND TITLE VII	Complete	8/6/2009	8/6/2009	2	1	2
Total Gold Line Training (Hours):						328

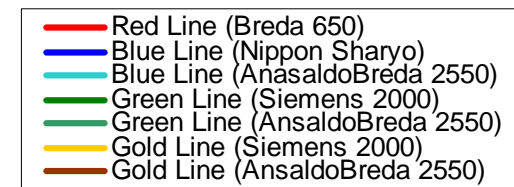
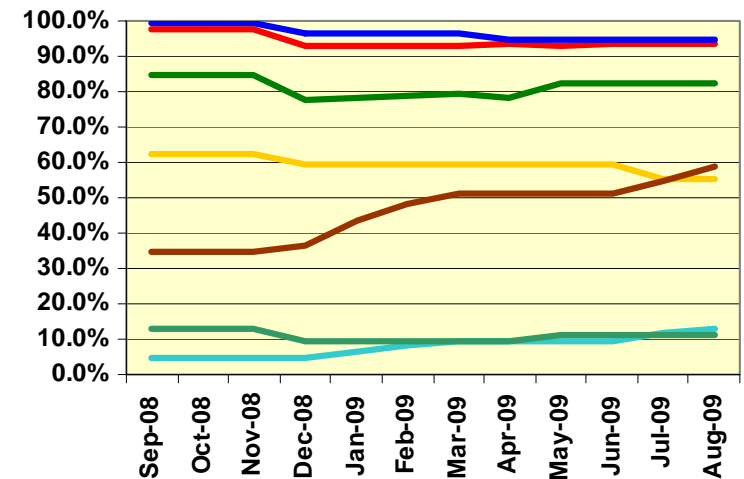
Total Rail Fleet Services Instruction for the month of August 2009 (Hours): 611.0

Core Vehicle Training Completed: BLUE RED GREEN GOLD

Percentage of core vehicle training complete: 94.5% 93.5% 82.2% 55.1%
 AnsaldoBreda 2550 Training Completed: 12.7% N/A 11.1% 58.6%

Average Specialist Rail Experience Level in Years: 10.1 8.2 7.4 8.0

Core Training Completed



Variations caused by new hires, employee transfers, & training completed

Absences vs. Overtime

August 2009

ABSENCE TYPE and HOURS	3940	3941	3942	3943	3944	Total
AWP-ABSENT W/O PERMISSION	0.00	0.00	0.00	0.00	32.00	32.00
BER-BEREAVEMENT	0.00	0.00	0.00	40.00	0.00	40.00
CTO-COMPENSATORY TIME OFF	0.00	68.78	144.00	48.00	8.00	268.78
CVA - CASUAL VACATION	184.00	8.00	1,219.50	0.00	12.00	1,423.50
DRN-DR. APPOINTMENT 48 HR NOT	0.00	0.00	0.00	2.00	0.00	2.00
DSL-DISABILITY LEAVE/LONG	0.00	576.00	248.00	0.00	160.00	984.00
EFH-EMG. FLOAT HOL.	0.00	32.00	96.00	80.00	48.00	256.00
ETO-EXCUSED TIME OFF	0.00	21.48	15.25	4.50	35.34	76.57
FML-FAMILY CARE LEAVE	0.00	296.59	246.00	76.98	8.00	627.57
HLF-HOLIDAY FLOATING	48.00	472.00	256.00	132.00	136.00	1,044.00
II-INDUSTRIAL INJURY	104.00	48.00	0.00	0.00	0.00	152.00
JUR-JURY DUTY	0.00	0.00	0.00	0.00	16.00	16.00
LC1-LABOR CODE 233	16.00	104.00	182.45	136.00	72.00	510.45
LTI-OCCPIL/LONGTRM INJ LEAVE	0.00	0.00	352.00	0.00	0.00	352.00
MLN-MILITARY ABSENCE-UNPAID	0.00	0.00	0.00	48.00	0.00	48.00
RTO-REQUESTED TIME OFF-NO PAY	0.00	23.70	0.00	0.00	0.00	23.70
SCK-SICK PAY	0.00	160.00	225.00	207.00	40.00	632.00
SCW-SICK WITHOUT PAY	0.00	40.00	16.00	21.73	160.00	237.73
SUP-TEMPORARY SUPERVISOR	0.00	337.94	249.72	218.50	467.50	1,273.66
UB-UNION BUSINESS	0.00	0.00	0.00	0.00	8.00	8.00
VAC-VACATION	0.00	855.97	272.00	692.00	1,080.00	2,899.97
Total Absence Hours	352.00	3,044.46	3,521.92	1,706.71	2,282.84	10,907.93
Number of Work Force	25.00	106.00	106.00	50.00	54.00	341.00
Full Work Force hours/month	4,332.50	18,369.80	18,369.80	8,665.00	9,358.20	59,095.30
Absence as a % of Work Force	8%	17%	19%	20%	24%	18%
OVERTIME TYPE and HOURS	3940	3941	3942	3943	3944	Total
CTB-COMPENSATORY TIME TO BANK	0.00	328.89	394.98	199.67	86.67	1,010.21
OTP-PREM OVERTIME	278.50	529.84	1,115.27	338.92	990.57	3,253.10
WLO-Worked Lunch Overtime	0.00	13.50	79.50	14.50	26.50	134.00
Total	278.50	872.23	1,589.75	553.09	1,103.74	4,397.31
Overtime as a % of Work Force	6%	5%	9%	6%	12%	7%
UNCOVERED ABSENCES	3940	3941	3942	3943	3944	Total
Absences FTE	2.03	17.56	20.32	9.85	13.17	62.93
OTP FTE	1.61	5.03	9.17	3.19	6.37	25.37
FTE Difference	0.42	12.53	11.15	6.66	6.80	37.56



Metro

1 FTE = 2080 Hours/Year or 173.3 Hours Per Month