



Rail Fleet Services Monthly Report December 2009



Metro

Table of Contents

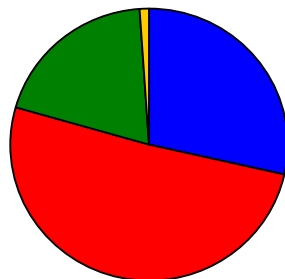
- Safety
 - Industrial Injuries Page 1
 - Rail Vehicle Accidents & Major Incidents Page 2
- Customer Service
 - Service Delivery – AM/PM Pull-Outs Page 3
 - Vehicle Utilization – Blue Line & Green Line Page 4
 - Vehicle Utilization – Red Line & Gold Line Page 5
 - Mean Miles Between Failures (Major) Page 6
 - Repeaters (Major) Page 7
- Business Processes
 - Incident Problems Page 8
 - Preventative Maintenance Compliance Page 9
- Finance
 - Vandalism & Graffiti Costs Page 10
 - Graffiti Pictures Page 11
 - Material & Labor Costs Page 12
 - Cost per mile Page 13
 - Budget Summary Page 14-15
 - Absence vs. Overtime Page 16
- Growth
 - Rail Fleet Service Training Page 17

Industrial Injuries – Lost Work Hours

December 2009

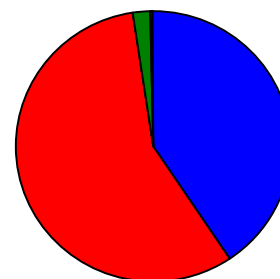
	Jan-09	Feb-09	Mar-09	Apr-09	May-09	Jun-09	Jul-09	Aug-09	Sep-09	Oct-09	Nov-09	Dec-09	Year to Date
Blue Line	400	488	280	176	160	208	144	48	112	352	288	200	2,856
Red Line	280	264	312	296	344	352	328	456	328	344	356	352	4,012
Green Line	0	0	0	0	0	0	0	0	0	0	8	136	144
Gold Line	8	0	0	0	0	0	0	0	0	0	0	8	16
Totals	688	752	592	472	504	560	472	504	440	696	652	696	7,028

December 2009 - Lost Work Hours



■ Blue Line ■ Red Line ■ Green Line ■ Gold Line

Year-to-Date Lost Work Hours



■ Blue Line ■ Red Line ■ Green Line ■ Gold Line

	Employees		December 2009 Lost Work Hours			
	Assigned	Active	Service Attendant	Maint. Specialist	Body Repairer /Painter	December 2009 Total Hrs.
Blue Line	107	102	0	0	200	200
Red Line	104	101	352	0	0	352
Green Line	48	48	120	16	0	136
Gold Line	51	49	0	8	0	8
Totals	310	300	472	24	200	696
Total Lost Work Hours for 12-months = 7,028 hours						

Rail Vehicle Accidents & Major Incidents

December 2009

Repair Costs	Jan-09	Feb-09	Mar-09	Apr-09	May-09	Jun-09	Jul-09	Aug-09	Sep-09	Oct-09	Nov-09	Dec-09	Totals
Blue Line	\$79,318	\$3,716	\$9,500	\$111	\$1,480	\$189	\$9,262	\$0	\$2,122	\$0	\$38,396	\$656	\$144,750
Red Line	\$0	\$0	\$0	\$0	\$104,950	\$0	\$0	\$0	\$0	\$0	\$0	\$0	\$104,950
Green Line	\$0	\$0	\$0	\$0	\$0	\$2,481	\$0	\$0	\$0	\$0	\$0	\$0	\$2,481
Gold Line	\$0	\$0	\$1,231	\$3,235	\$0	\$189	\$0	\$0	\$14,310	\$0	\$3,538	\$0	\$22,503
Totals	\$79,318	\$3,716	\$10,731	\$3,346	\$106,430	\$2,859	\$9,262	\$0	\$16,432	\$0	\$41,934	\$656	\$274,684



Rail Vehicle Accident Costs - December 2009				
Metro Blue Main Line				
2009	Incident #	Problem code	Incident Description	Cost
Dec. 27	1416119	(10-72) Train vs. Pedestrian	Train 01, T-227, Cars 147-154 was traveling southbound on track number 2 at Vernon Avenue Grade Crossing, a pedestrian entered the Blue Line right of way and made contact with Train 01.	\$656.48
GRAND TOTAL				\$656.48
No accidents for , Red Line, Green Line and Gold Line				
(10-71) = Train vs. Object, (10-72) = Train vs. Pedestrian, (10-73) = Train vs. Vehicle (10-74) = Train vs. MTA Vehicle, (10-75) = Derailment				

Service Delivery – AM/PM Pull-Outs

December 2009

Cars Available for AM/PM Pull-Outs

Blue Line – Fleet Size 69 cars

- Weekday pull-out: 60 cars
- Weekend pull-out: 36 cars
- **Monthly Mileage: 415,087 miles**

Red Line – Fleet Size 104 cars

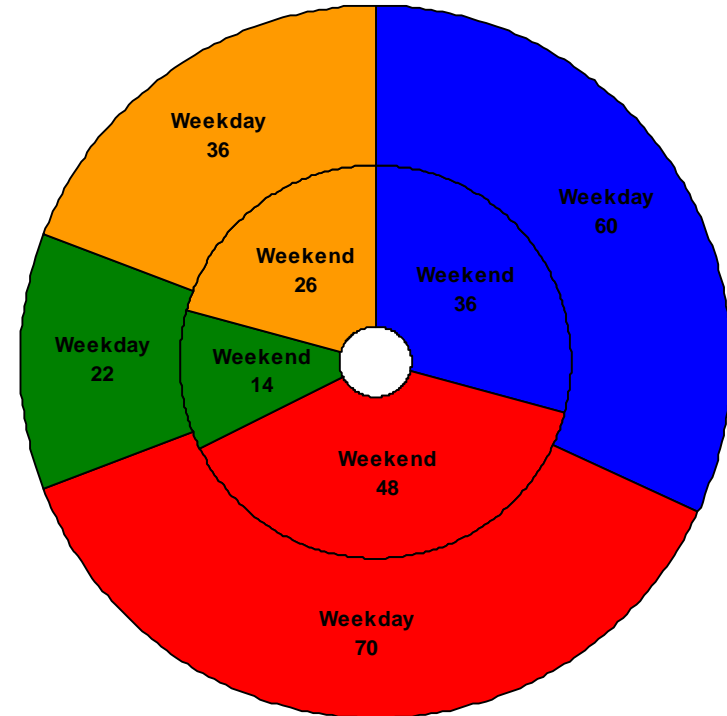
- Weekday pull-out: 70 cars
- Weekend pull-out: 48 cars
- **Monthly Mileage: 520,688 miles**

Green Line – Fleet Size 28 cars

- Weekday pull-out: 22 cars
- Weekend pull-out: 14 cars
- **Monthly Mileage: 222,965 miles**

Gold Line – Fleet Size 49 cars

- Weekday pull-out: 36 cars
- Weekend pull-out: 26 cars
- **Monthly Mileage: 239,890 miles**

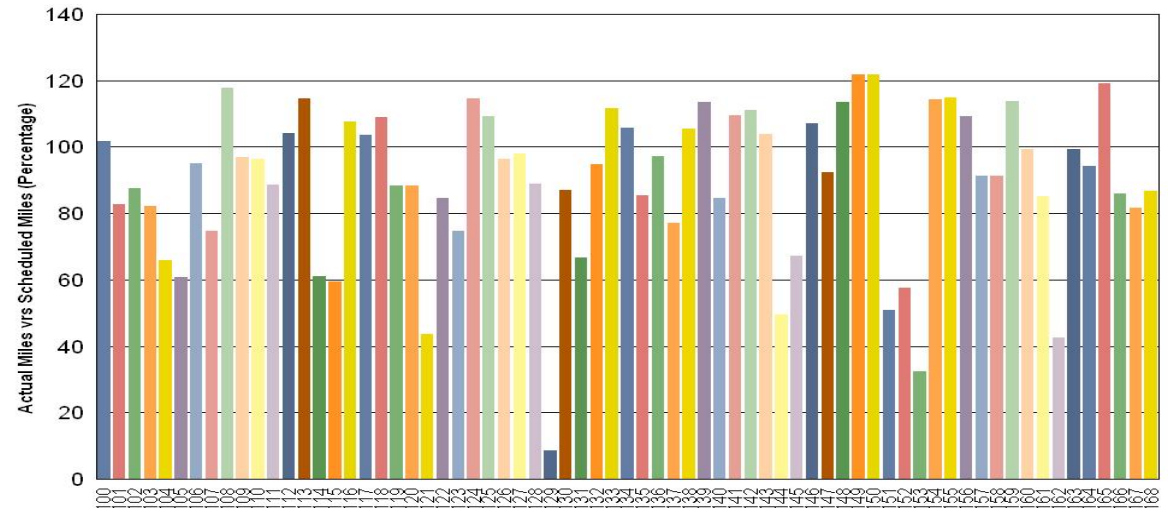


■ Blue Line ■ Red Line ■ Green Line ■ Gold Line

Vehicle Utilization

December 2009

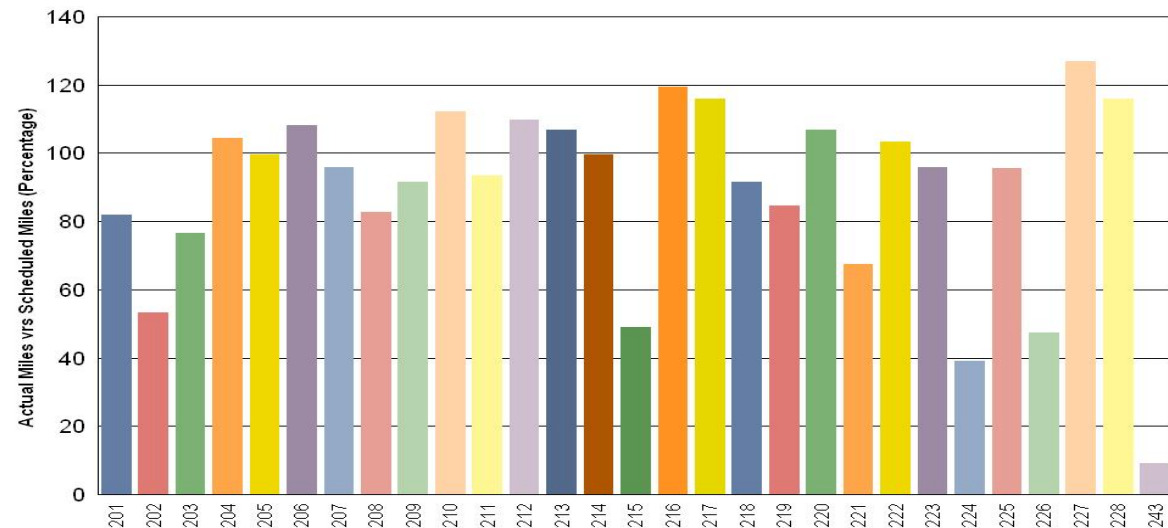
Metro Blue Line



Blue Line - Car 129 was in the Paint and Body Shop from December 4th through December 28th for roof and horn box refurbishment.

Note: Percentage includes an average 4% mileage deduction for Yard mileage and Vehicle Testing.

Metro Green Line



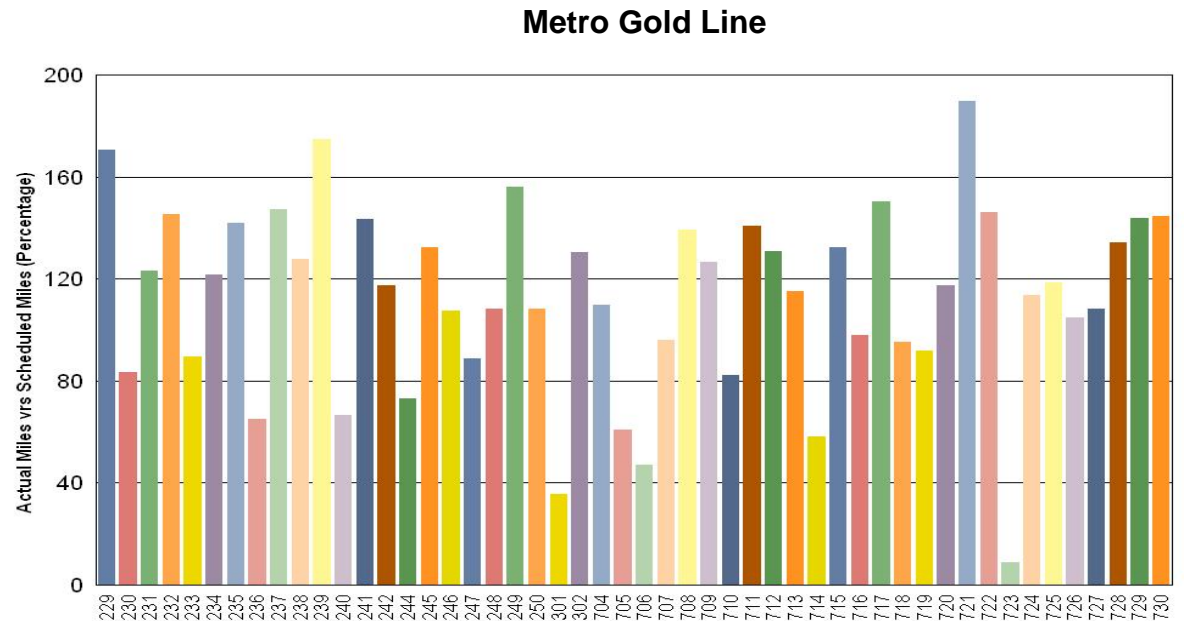
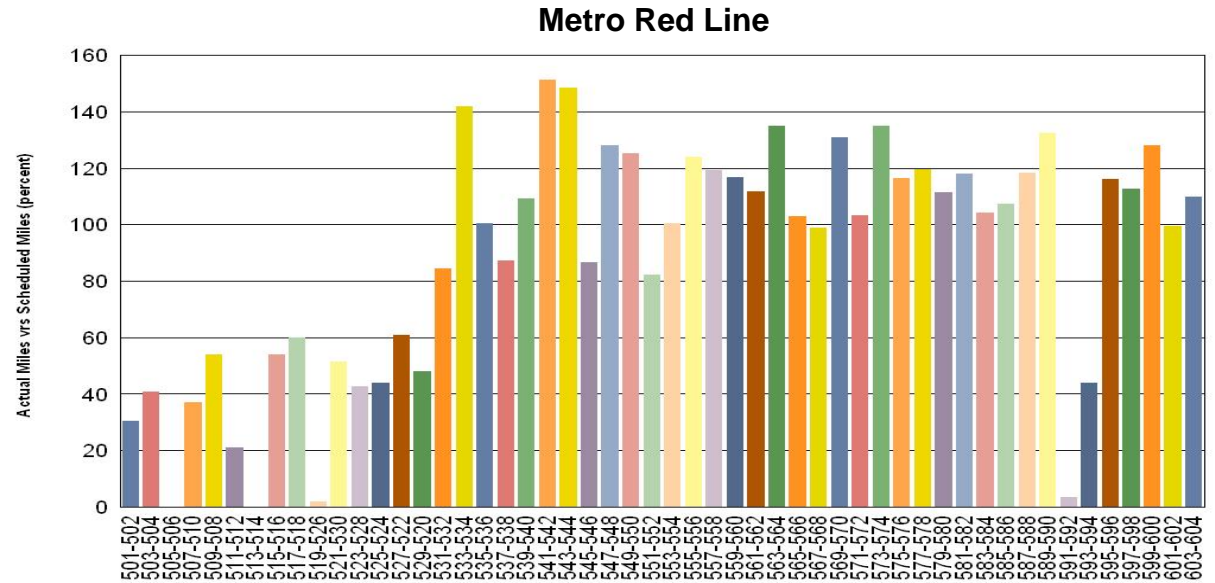
Green Line – Car 243 was the accident car that came back from Siemens with missing parts and prop faults, brake faults, HVAC faults, truck change out, ATP/ATO problems and missing interior panels. The car is now Stat 1.

Vehicle Utilization

December 2009

Red Line - The original 30 Base Buy cars are not being used to their fullest potential due to propulsion problems. Cars 591-592 are still in the shop for truck vibrations problems.

Percentage includes an average 4% mileage deduction for Yard mileage and Vehicle Testing.



Mean Miles Between Failures (Major) December 2009

Miles Between Major Failures

Blue Line: 46,121 miles (9 Major Failures)

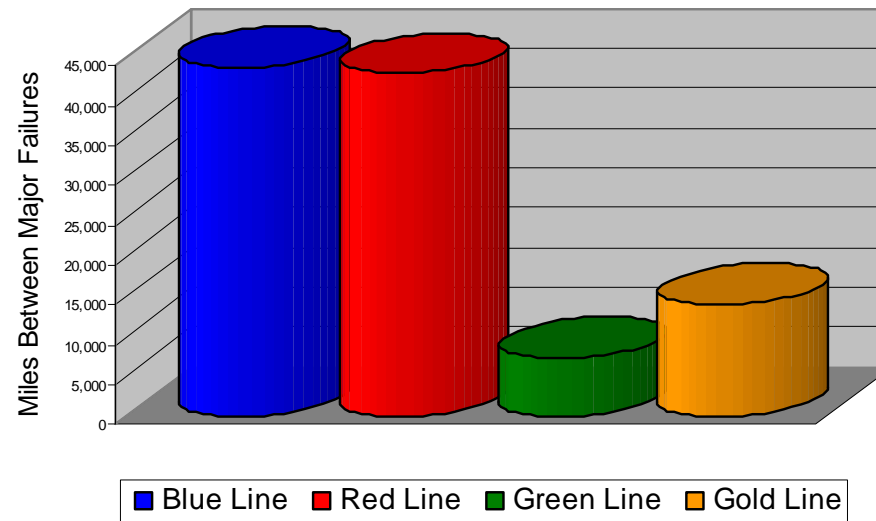
Red Line: 40,053 miles (13 Major Failures)

Green Line: 8,258 miles (27 Major Failures)

Gold Line: 9,227 miles (26 Major Failures)

Siemens P2000 9,445 miles (12 Major Failures)

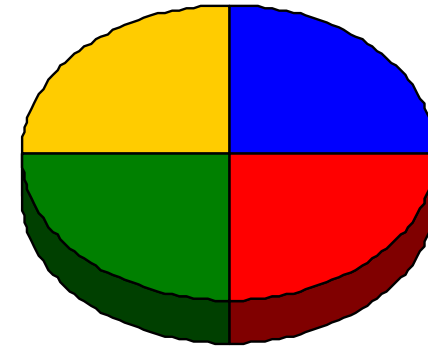
AnsaldoBreda P2550 9,039 miles (14 Major Failures)



Major Failure: When a train does not complete its scheduled run or is more than 5 minutes late of its scheduled arrival time.

Repeat Failures December 2009

Metro Blue Line: 1 Repeat Failure
Metro Red Line: 1 Repeat Failure
Metro Green Line: 1 Repeat Failure
Metro Gold Line: 1 Repeat Failure



■ Blue Line
 ■ Red Line
 ■ Green Line
 ■ Gold Line

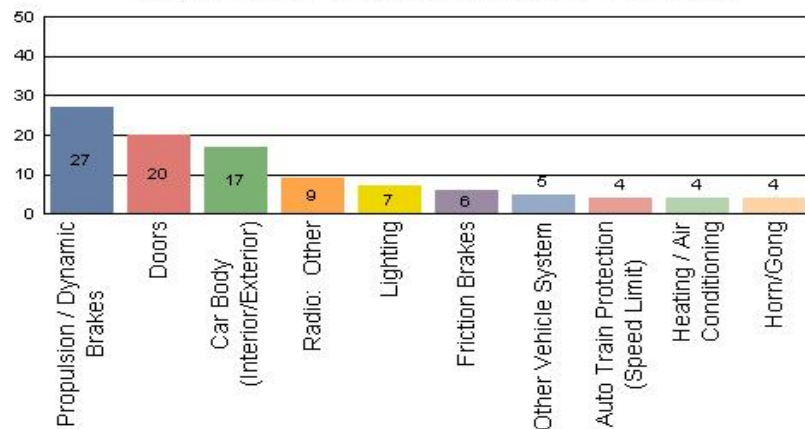
Repeater Car Details - December 2009								
System	Blue Line		Red Line		Green Line		Gold Line	
	Car #	Repeats	Car #	Repeats	Car #	Repeats	Car #	Repeats
Doors	118	1			226	1		
Friction Brakes			539	1				
Propulsion/Dynamic Brake							238	1
TOTALS	1		1		1		1	

***Repeat Failure:** When a train car has two or more major repeat problems/failures.*

Reported Incidents December 2009

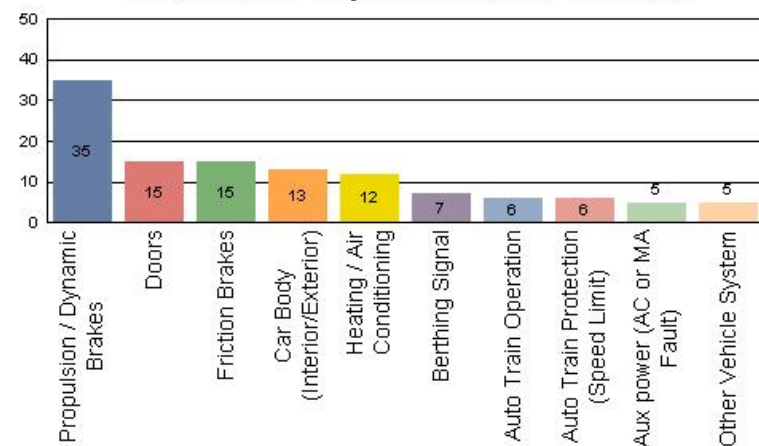
Metro Blue Line

Count of the Top 10 Incident Problems



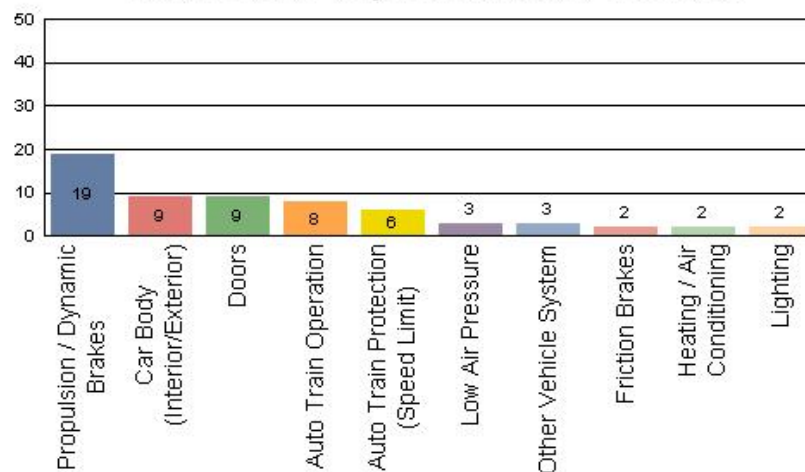
Metro Red Line

Count of the Top 10 Incident Problems



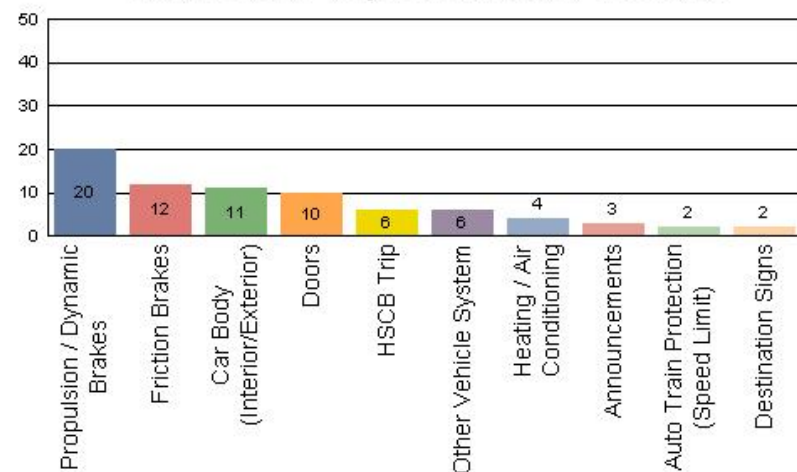
Metro Green Line

Count of the Top 10 Incident Problems



Metro Gold Line

Count of the Top 10 Incident Problems



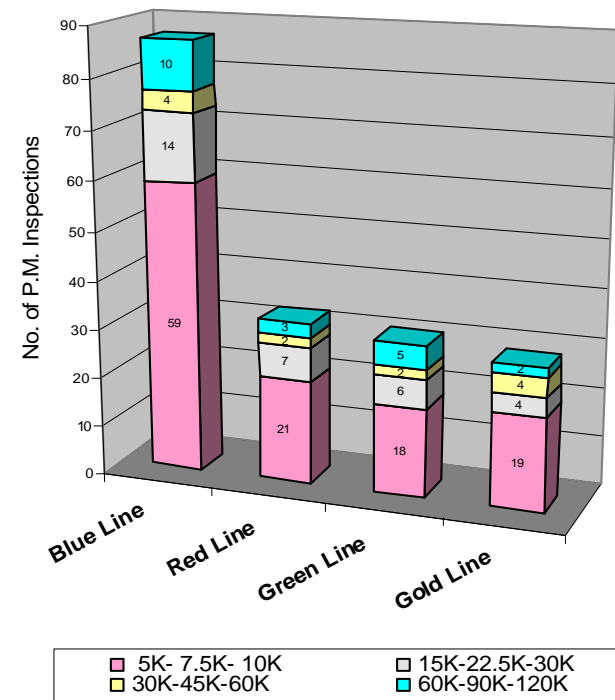
Preventative Maintenance Compliance

December 2009

Averages	Dec-08	Jan-09	Feb-09	Mar-09	Apr-09	May-09	Jun-09	Jul-09	Aug-09	Sep-09	Oct-09	Nov-09	Dec-09
Blue Line	100%	100%	100%	100%	100%	100%	100%	100%	100%	100%	100%	100%	100%
Red Line	100%	100%	100%	100%	100%	100%	100%	94%	100%	100%	100%	100%	100%
Green Line	100%	100%	93%	97%	100%	100%	100%	100%	100%	100%	100%	100%	100%
Gold Line	100%	100%	100%	100%	100%	100%	100%	100%	100%	100%	100%	100%	100%

December 2009 Preventative Maintenance Inspections

No. of P.M. Inspections	5K-7.5K-10K	15K-22.5K-30K	30K-45K-60K	60K-90K-120K	Totals	Percent Compliance
Blue Line	59	14	4	10	87	100%
Red Line	21	7	2	3	33	100%
Green Line	18	6	2	5	31	100%
Gold Line	19	4	4	2	29	100%
Totals:	117	31	12	20	180	100%

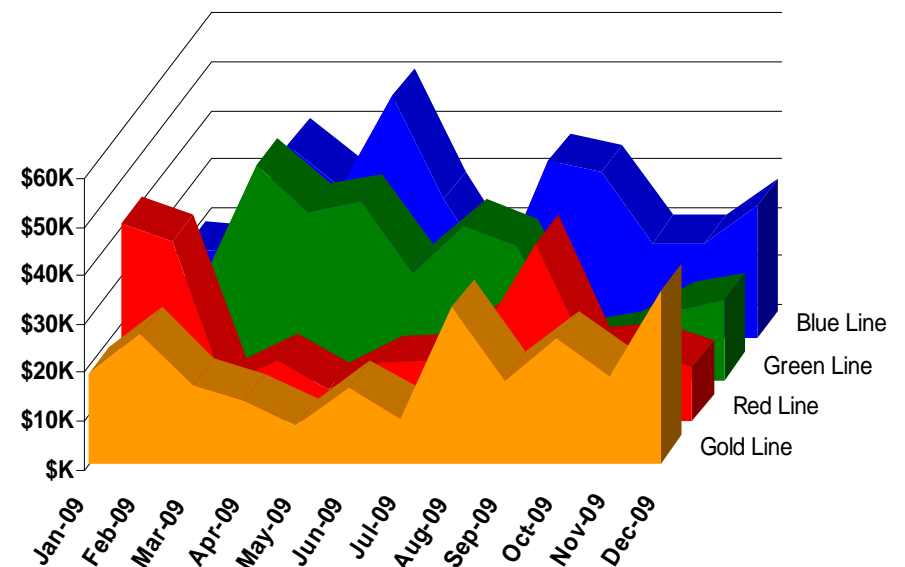


Vandalism & Graffiti Report

December 2009

	Jan-09	Feb-09	Mar-09	Apr-09	May-09	Jun-09	Jul-09	Aug-09	Sep-09	Oct-09	Nov-09	Dec-09	Year-to-Date
Blue Line	\$18,498	\$17,708	\$39,975	\$31,349	\$50,062	\$28,914	\$11,909	\$36,475	\$34,376	\$19,686	\$19,757	\$27,409	\$336,118
Green Line	\$40,809	\$37,117	\$44,211	\$34,775	\$36,921	\$22,307	\$31,788	\$27,501	\$6,774	\$8,355	\$14,915	\$16,393	\$321,866
Red Line	\$8,504	\$21,465	\$7,529	\$12,499	\$6,513	\$12,013	\$12,562	\$19,237	\$10,375	\$13,684	\$14,334	\$11,227	\$149,942
Gold Line	\$18,107	\$26,625	\$15,808	\$12,707	\$7,651	\$15,543	\$9,213	\$32,051	\$17,062	\$25,750	\$17,992	\$35,479	\$233,988
Totals	\$85,918	\$102,915	\$107,523	\$91,330	\$101,147	\$78,777	\$65,472	\$115,264	\$68,587	\$67,475	\$66,998	\$90,507	\$1,041,913

December 2009 Vandalism & Graffiti - All Rail				
	Qty	Labor	Materials	Totals
Windows replaced	48	\$3,717	\$8,516	\$12,233
Vandal Shields	535	\$12,685	\$6,226	\$18,910
Seats Cleaned	4,561	\$10,321	\$0	\$10,321
Seats Replaced	98	\$3,087	\$3,631	\$ 6,718
Ext/Int Repairs	1,484	\$36,121	\$3,484	\$39,605
Totals for December 2009		\$68,167	\$22,340	\$90,507



Vandalism & Graffiti Pictures

December 2009

A

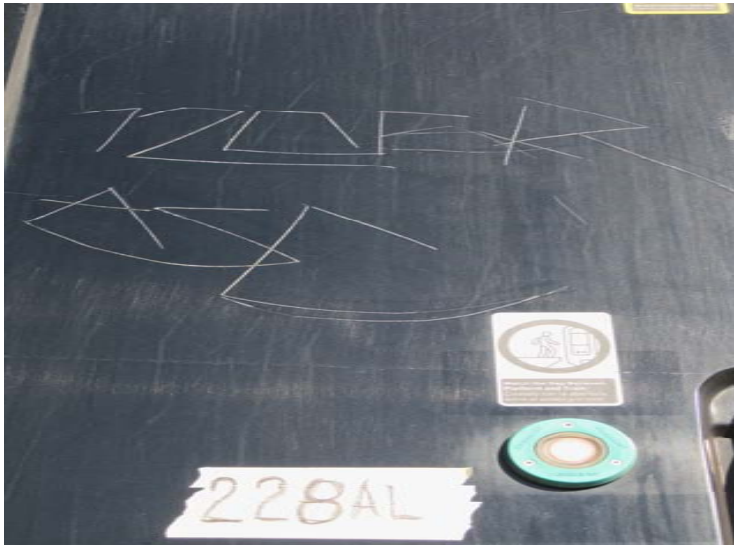


B



A and B - Metro Blue Line

C



C - Metro Green Line

D



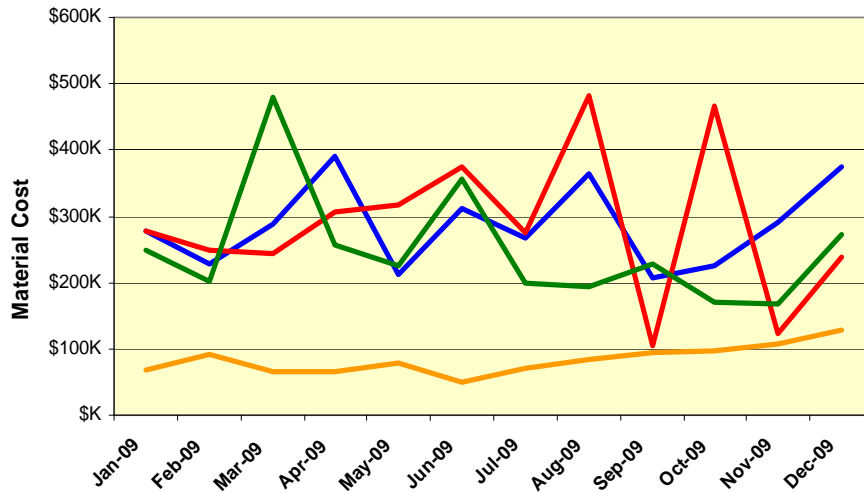
D - Metro Gold Line

Material and Labor Costs

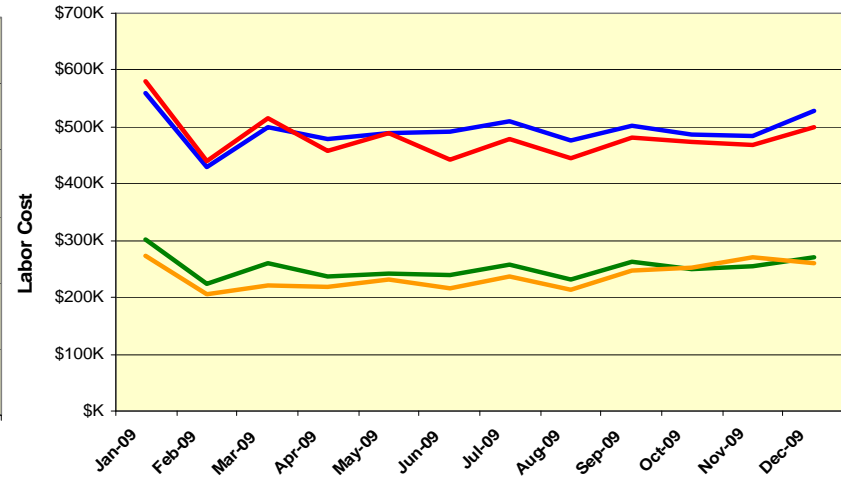
December 2009

MATERIALS	Jan-09	Feb-09	Mar-09	Apr-09	May-09	Jun-09	Jul-09	Aug-09	Sep-09	Oct-09	Nov-09	Dec-09	Totals
Blue Line	\$279K	\$227K	\$289K	\$390K	\$211K	\$311K	\$268K	\$364K	\$207K	\$226K	\$290K	\$376K	\$3,437K
Red Line	\$277K	\$249K	\$244K	\$306K	\$318K	\$375K	\$275K	\$483K	\$104K	\$467K	\$123K	\$239K	\$3,461K
Green Line	\$248K	\$202K	\$479K	\$257K	\$226K	\$356K	\$200K	\$195K	\$229K	\$170K	\$169K	\$273K	\$3,004K
Gold Line	\$69K	\$92K	\$65K	\$66K	\$78K	\$50K	\$71K	\$85K	\$94K	\$96K	\$106K	\$128K	\$1,000K
Totals	\$873K	\$771K	\$1,077K	\$1,019K	\$834K	\$1,092K	\$814K	\$1,126K	\$634K	\$958K	\$688K	\$1,015K	\$9,199K

Material Costs



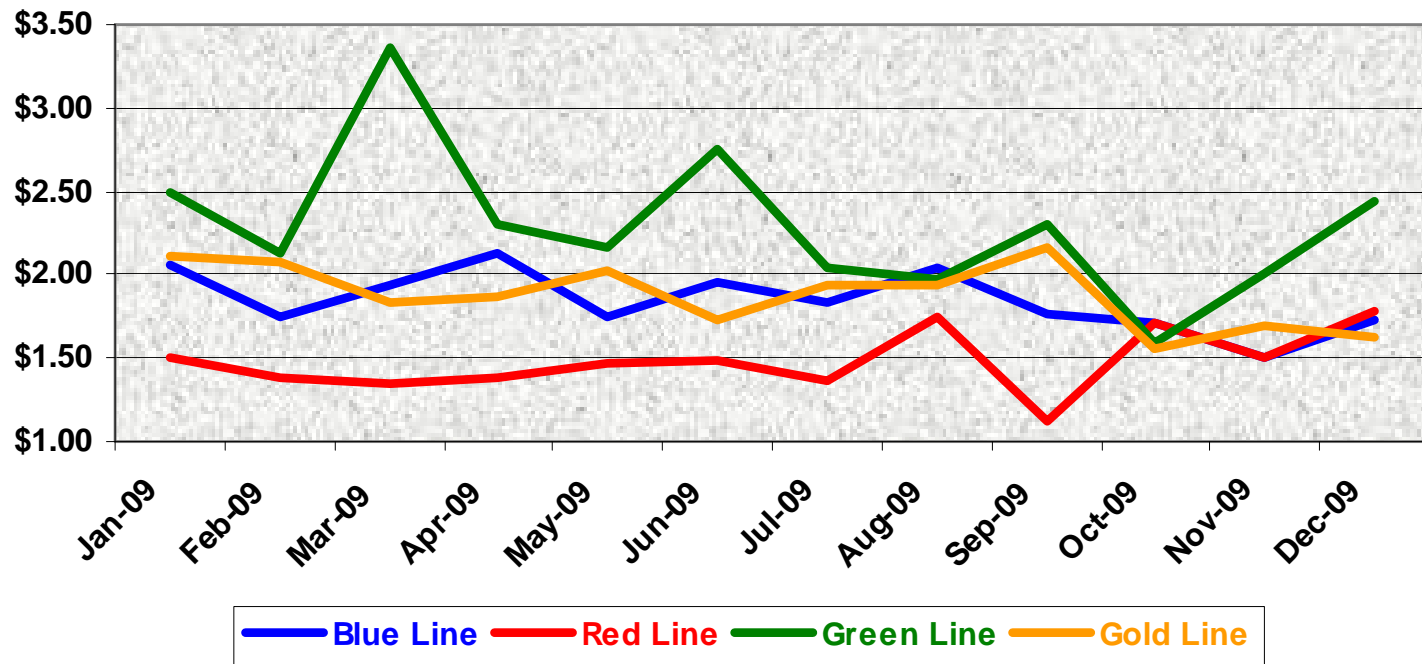
Labor Costs



LABOR	Jan-09	Feb-09	Mar-09	Apr-09	May-09	Jun-09	Jul-09	Aug-09	Sep-09	Oct-09	Nov-09	Dec-09
Blue Line	\$560K	\$429K	\$501K	\$480K	\$490K	\$492K	\$510K	\$476K	\$501K	\$487K	\$483K	\$528K
Red Line	\$579K	\$440K	\$516K	\$459K	\$488K	\$443K	\$478K	\$445K	\$481K	\$475K	\$468K	\$499K
Green Line	\$302K	\$225K	\$261K	\$236K	\$241K	\$238K	\$257K	\$232K	\$264K	\$249K	\$256K	\$270K
Gold Line	\$272K	\$205K	\$221K	\$218K	\$232K	\$217K	\$238K	\$213K	\$247K	\$251K	\$272K	\$260K
Totals	\$1,713K	\$1,298K	\$1,498K	\$1,392K	\$1,452K	\$1,390K	\$1,483K	\$1,365K	\$1,493K	\$1,462K	\$1,479K	\$1,556K

Cost Per Mile December 2009

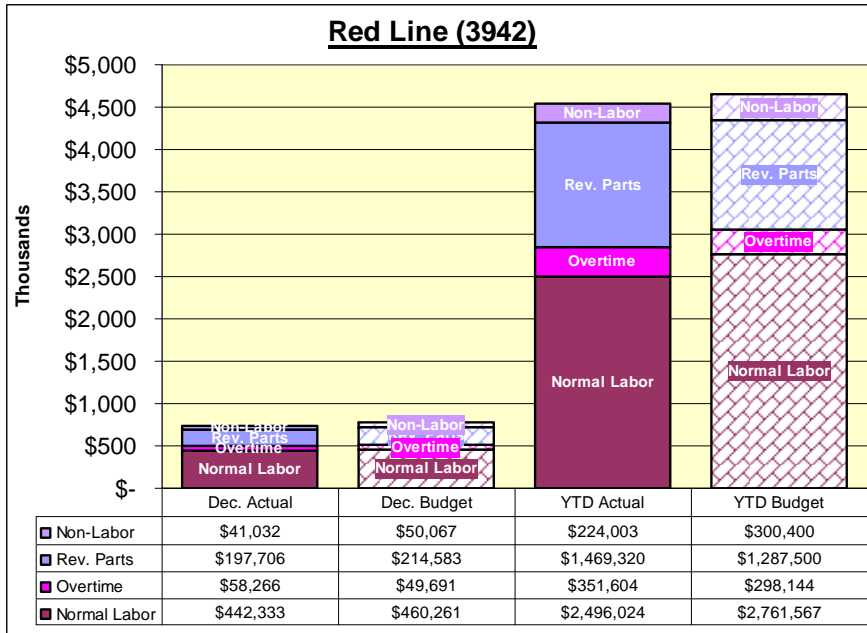
Cost per mile:	Jan-09	Feb-09	Mar-09	Apr-09	May-09	Jun-09	Jul-09	Aug-09	Sep-09	Oct-09	Nov-09	Dec-09	Average
Blue Line	\$2.06	\$1.75	\$1.94	\$2.12	\$1.74	\$1.95	\$1.83	\$2.04	\$1.76	\$1.71	\$1.50	\$1.73	\$1.84
Red Line	\$1.50	\$1.39	\$1.35	\$1.38	\$1.46	\$1.49	\$1.37	\$1.75	\$1.12	\$1.71	\$1.50	\$1.78	\$1.48
Green Line	\$2.50	\$2.12	\$3.36	\$2.31	\$2.16	\$2.75	\$2.05	\$1.97	\$2.29	\$1.59	\$2.01	\$2.43	\$2.29
Gold Line	\$2.12	\$2.08	\$1.83	\$1.86	\$2.02	\$1.73	\$1.94	\$1.94	\$2.17	\$1.55	\$1.69	\$1.62	\$1.88



No facility costs are included

RFS Monthly Budget Summary

December 2009

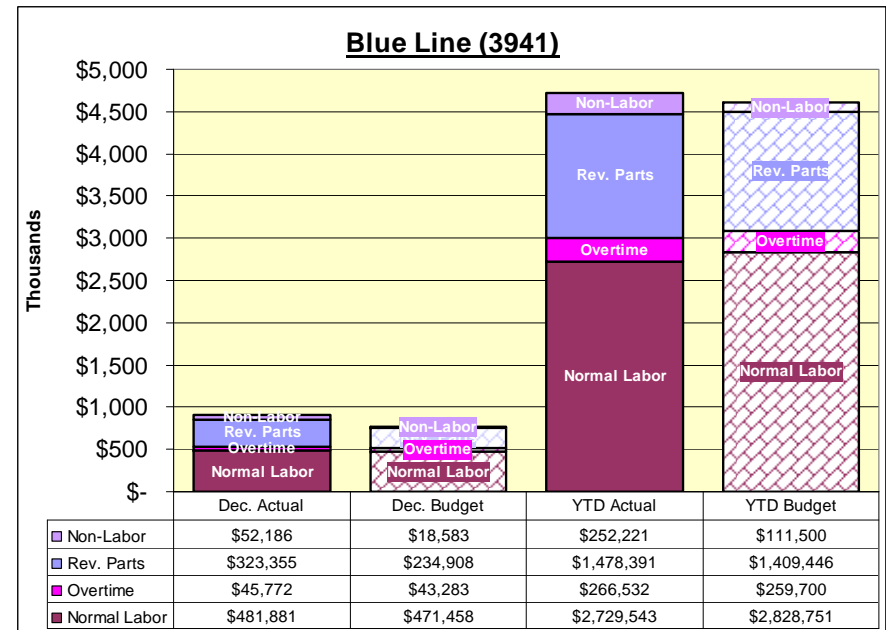


Red Line Explanations:

- The December overtime is higher than the monthly budget by 17.2%. It is due to the holiday work expense (2.5 times) on Christmas is charged to the overtime premium. YTD difference indicates an 18% higher.
- Normal Labor is 3.9% lower than the monthly budget and the YTD difference is 9.6% lower than YTD Budget.
- The December revenue parts consumption is 7.8% lower than the monthly budget. YTD difference is 14% higher. The top spending item this month is DC traction motor.
- Notes:
 - Dec. Normal Labor = \$17,928 under budget (UB)
 - YTD Normal Labor = \$265,543 (UB)
 - Dec. OT = \$8,575 over budget (OB)
 - YTD OT = \$53,469 (OB)
 - Dec. Total Labor = \$9,353 (UB)
 - YTD Total Labor = \$212,083 (UB)
 - Total YTD Labor/Non-labor = \$106,660 (UB)

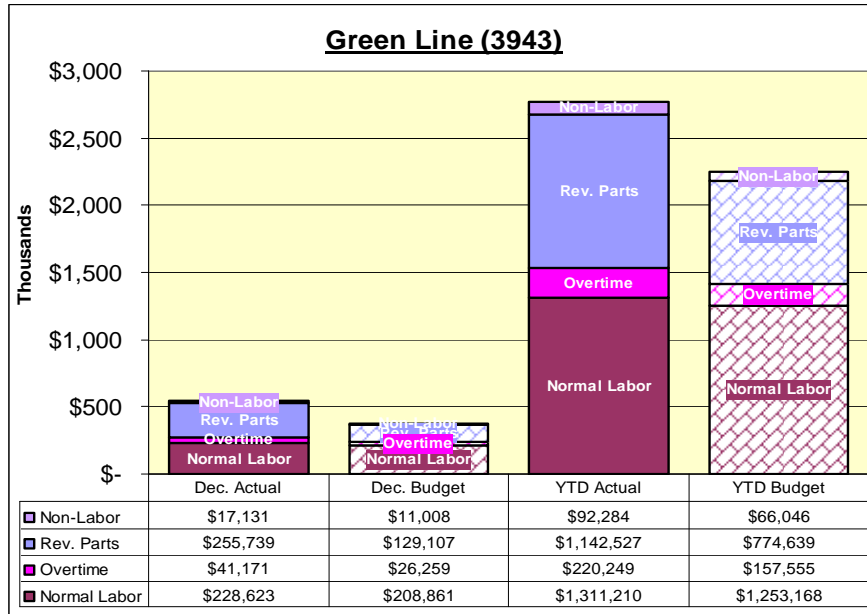
Blue Line Explanations:

- The Revenue Parts monthly budget exceeds the budget by 27% for December. This is due to the increase in failures which is directly connected with the age of the Blue Line rail car.
- The Non-Labor budget for December has exceeded the monthly budget by 181% and by 126% for the YTD totals. Operational funds were required to be used to pay for replacement of equipment for the Blowdown ventilation system and the increase in cost to maintain the Blue Line Light Rail Vehicles.
- Notes:
 - Dec. Normal Labor (50151) = \$9,530 over budget (OB)
 - YTD Normal Labor (50151) = \$ 35,212 under budget (UB)
 - Dec. OT = \$934 under budget (UB)
 - YTD OT = \$1,031 over budget (OB)
 - Dec. Total Labor = \$13,018 over budget (OB)
 - YTD Total Labor = \$105,215 under budget (UB)
 - Total YTD Labor/Non-Labor= \$117,289 over budget (OB)



RFS Monthly Budget Summary

December 2009



Green Line Explanations:

- The Green Line's monthly budget has exceeded its budget by approximately 36% with an overall YTD negative variance of 28%. MGL supports Gold Line in parts and services such as: building traction motors, master controllers, and communication control heads however, Gold Line staff charges these costs to Green line causing costs to exceed our monthly budget. Staff is working to alleviate this issue.
- The Revenue Parts budget indicates a negative monthly variance of approximately 50% for December and overall YTD of 32%. Rev Parts for Dec09 Actual is due to rising parts usage incurred in supporting other RFS divisions.
- The Non-Labor increase is 36% over the December budget with a YTD negative variance of 28%. Non-Labor for Dec09 Actual includes Gold Line costs. YTD Actual is over budget due to MGL incurring costs for it own operations and for costs incurred for other divisions as well.

Notes:

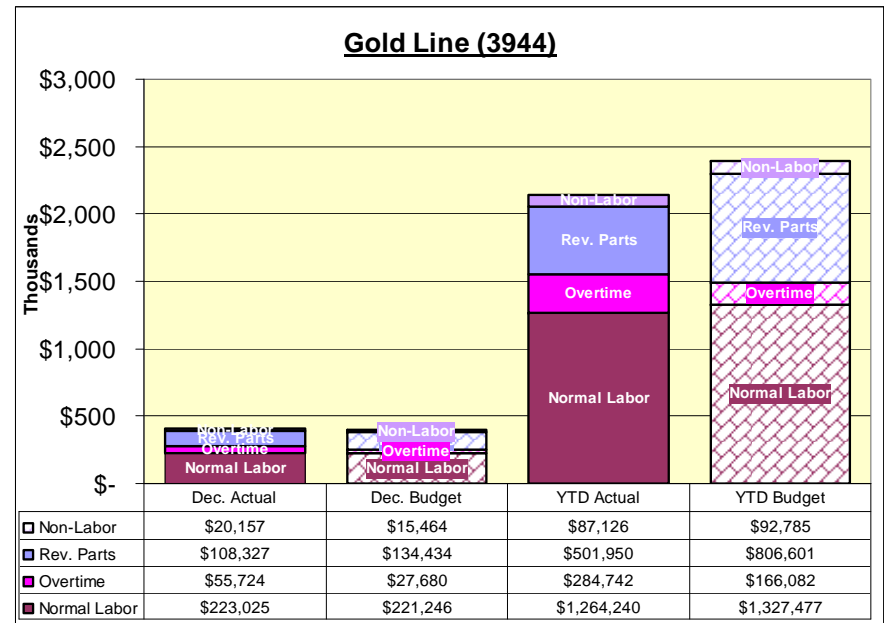
- Dec. Normal Labor = \$19,1762 (OB)
- YTD Normal Labor = \$58,053 (OB)
- Dec. OTP = \$14,912 (OB)
- YTD OTP = \$62,693 (OB)
- Dec. Total Labor = \$34,674 (OB)
- YTD Total Labor = \$120,736 (OB)
- Total YTD Labor/Non-Labor = \$514,863 (OB)

Gold Line Explanations:

- The Gold Line overtime budget has exceeded the December budget by approximately 50% and an overall YTD negative variance of 42%. The increase in OT is attributed to fleet size, a 36 car roll out schedule and continued support for New Year's Day/Rose Parade/Rose Bowl and testing.
- The Revenue Parts monthly budget has exceeded its budget by 24% for December and the YTD variance of 61%. Our fleet is mixed with 23 Siemens and 27 AnsaldoBreda cars. We have not started on any Siemens overhauls, so our M/S Rev Parts budget remains under budget and the AnsaldoBreda cars remain under warranty. We experienced an increase in P2000 failures in December that required components to be replaced.
- The Non-Labor total for December shows a negative variance of 23% for December. We had an increase in tooling and equipment spending resulting in an increase of \$6,574 dollars (\$2,500 attributed to paint supplies) for the month.

Notes:

- Dec. Normal Time = \$1,779 over budget (OB)
- YTD Normal Time = \$63,237 under budget (UB)
- Dec. OTP = \$28,044 (OB)
- YTD OTP = \$118,660 (OB)
- Dec. Non-Labor = \$4,693 (OB)
- YTD Non-Labor = \$5,659 (UB)
- Total YTD Labor/Non-Labor = \$254,887 (UB)



Absences vs. Overtime

December 2009

ABSENCE TYPE and HOURS	3940	3941	3942	3943	3944	Total
AWP-ABSENT W/O PERMISSION	0.00	0.00	0.00	16.00	0.00	16.00
BER-BEREAVEMENT	0.00	56.00	48.00	24.00	40.00	168.00
CTO-COMPENSATORY TIME OFF	10.50	220.30	144.00	68.00	112.00	554.80
CVA - CASUAL VACATION	72.00	0.00	948.00	2.00	16.00	1,038.00
DSL-DISABILITY LEAVE/LONG	0.00	392.00	0.00	0.00	360.00	752.00
EFH-EMG. FLOAT HOL.	0.00	24.00	40.00	24.00	24.00	112.00
ETO-EXCUSED TIME OFF	0.50	30.00	19.00	5.00	4.32	58.82
FML-FAMILY CARE LEAVE	0.00	415.97	480.00	42.50	144.00	1,082.47
HLF-HOLIDAY FLOATING	32.00	216.00	176.00	72.00	248.00	744.00
HNP-HOLIDAY NOT PAID	0.00	16.00	40.00	16.00	8.00	80.00
HOL-HOLIDAY LEGAL	48.00	568.00	536.00	176.00	168.00	1,496.00
II-INDUSTRIAL INJURY	0.00	184.00	0.00	136.00	8.00	328.00
JUR-JURY DUTY	0.00	8.00	184.00	0.00	32.00	224.00
LC1-LABOR CODE 233	8.00	160.00	345.17	96.00	64.00	673.17
LTI-OCCPIL/LONGTRM INJ LEAVE	0.00	0.00	352.00	0.00	0.00	352.00
OWP-OFF WITH PERMISSION	0.00	0.50	8.75	0.00	0.00	9.25
RTO-REQUESTED TIME OFF-NO PAY	0.00	0.00	10.00	0.00	1.08	11.08
SCK-SICK PAY	40.00	156.00	198.80	165.33	80.00	640.13
SCW-SICK WITHOUT PAY	0.00	40.00	32.00	32.00	8.00	112.00
SPN-SCHOOL PARTNER NOT PAID	0.00	0.00	0.00	0.58	0.00	0.58
SUP-TEMPORARY SUPERVISOR	0.00	324.74	146.93	261.64	256.47	989.78
VAC-VACATION	180.00	752.81	402.00	252.00	503.00	2,089.81
Total Absence Hours	391.00	3,564.32	4,110.65	1,389.05	2,076.87	11,531.89
Number of Work Force	22.00	107.00	104.00	48.00	51.00	332.00
Full Work Force hours/month	3,812.60	18,543.10	18,023.20	8,318.40	8,838.30	57,535.60
Absence as a % of Work Force	10%	19%	23%	17%	23%	20%
OVERTIME TYPE and HOURS	3940	3941	3942	3943	3944	Total
CTB-COMPENSATORY TIME TO BANK	20.00	172.25	116.33	28.33	91.51	428.42
OTP-PREM OVERTIME	217.00	536.77	743.47	589.17	898.36	2,984.77
WLO-Worked Lunch Overtime	0.00	19.37	83.00	40.00	38.00	180.37
Total	237.00	728.39	942.80	657.50	1,027.87	3,593.56
Overtime as a % of Work Force	6%	4%	5%	8%	12%	6%
UNCOVERED ABSENCES	3940	3941	3942	3943	3944	Total
Absences FTE	2.26	20.56	23.72	8.01	11.98	66.53
OTP FTE	1.37	4.20	5.44	3.79	5.93	20.73
FTE Difference	0.89	16.36	18.28	4.22	6.05	45.80

Rail Fleet Services Instruction

December 2009

Training classes completed during the month of December 2009

Description	Status	Start	End	Course Hours	Student Count	Training Hours
Blue Line Training - LRV:						
OJT CLASS ENTRANCE EXAM - CBT TESTING	Complete	12/15/2009	12/15/2009	10	2	20
MOP MANAGING LEAVES OF ABSENCE	Complete	12/8/2009	12/8/2009	3	3	9
RAIL SYSTEM SAFETY	Complete	12/15/2009	12/29/2009	3	8	24
MOP ADA REASONABLE ACCOM. / INTERACTIVE PROCESS	Complete	12/17/2009	12/17/2009	4	2	8
M3 MAINTENANCE LEADER	Complete	12/3/2009	12/3/2009	8	1	8
ETD PUBLIC SPEAKING	Complete	12/16/2009	12/16/2009	3	1	3
ETD PEOPLE SKILLS	Complete	12/8/2009	12/8/2009	3	1	3
MOP SEXUAL HARASSMENT PREVENTION AND TITLE VII	Complete	12/17/2009	12/17/2009	3	1	3
Total Blue Line Training (Hours):						78
Red Line Training (Breda A650 HRV):						
M3 MAINTENANCE LEADER	Complete	12/3/2009	12/3/2009	8	4	32
ETD PEOPLE SKILLS	Complete	12/8/2009	12/8/2009	3	2	6
MAINTENANCE SUPERVISORS TRAINING - CLASS 2	Complete	12/3/2009	12/3/2009	4	1	4
OJT CLASS ENTRANCE EXAM - CBT TESTING	Complete	12/15/2009	12/15/2009	10	3	30
BASIC GRAMMAR	Complete	12/9/2009	12/9/2009	3	1	3
Total Red Line Training (Hours):						43
Green Line Training (P2550 & P2000 LRVs):						
FALL PROTECTION	Complete	12/7/2009	12/7/2009	2	1	2
HAZARD COMMUNICATION: IDENTIFYING THE DANGERS	Complete	12/4/2009	12/4/2009	2	1	2
BLOODBORNE PATHOGENS	Complete	12/3/2009	12/12/2009	2	2	4
PERSONAL PROTECTIVE EQUIPMENT	Complete	12/3/2009	12/3/2009	2	1	2
SAFETY ORIENTATION: ON ALERT	Complete	12/3/2009	12/3/2009	2	1	2
EXCEL - MULTIPLE WORKSHEETS	Complete	12/16/2009	12/16/2009	2.5	1	2.5
OJT CLASS ENTRANCE EXAM - CBT TESTING	Complete	12/15/2009	12/15/2009	10	3	30
HAZARD COMMUNICATION TRAINING	Complete	12/9/2009	12/9/2009	4	2	8
Total Green Line Training (Hours):						52.5
Gold Line Training (P2550 & P2000 LRVs):						
FORKLIFT, OSHA REFRESHER	Complete	12/1/2009	12/1/2009	19	2	38
OJT CLASS ENTRANCE EXAM - CBT TESTING	Complete	12/15/2009	12/15/2009	10	1	10
HAZARD COMMUNICATION TRAINING	Complete	12/9/2009	12/9/2009	4	1	4
Total Gold Line Training (Hours):						38

Total Rail Fleet Services Instruction for the month of December 2009 (Hours): 211.5

Core Vehicle Training Completed:

BLUE RED GREEN GOLD

Percentage of core vehicle training complete: 94.5% 98.6% 82.2% 55.1%

AnsaldoBreda 2550 Training Completed: 13.8% N/A 11.1% 61.7%

Average Specialist Rail Experience Level in Years: 10.5 8.5 7.7 8.4

Core Training Completed

