



# **Rail Fleet Services Monthly Report February 2009**



**Metro**

# Table of Contents

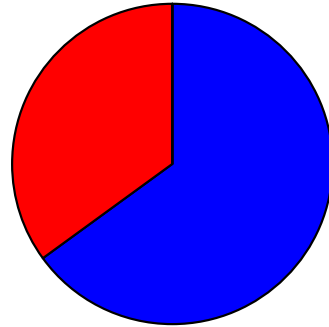
• Safety	
– Industrial Injuries	Page 1
– Rail Vehicle Accidents & Major Incidents	Page 2
• Customer Service	
– Service Delivery – AM/PM Pull-Outs	Page 3
– Vehicle Utilization – Blue Line & Green Line	Page 4
– Vehicle Utilization – Red Line & Gold Line	Page 5
– Mean Miles Between Failures (Major)	Page 6
– Repeaters (Major)	Page 7
– Metro Rail Reliability	Page 8
• Business Processes	
– Incident Problems	Page 9
– Preventative Maintenance Compliance	Page 10
• Finance	
– Vandalism & Graffiti Costs	Page 11
– Graffiti Pictures	Page 12
– Material & Labor Costs	Page 13
– Cost per mile	Page 14
• Growth	
– Rail Fleet Service Training	Page 15
– Absences vs. Overtime	Page 16

# Industrial Injuries – Lost Work Hours

## February 2009

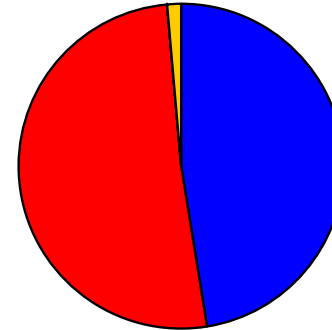
	Mar-08	Apr-08	May-08	Jun-08	Jul-08	Aug-08	Sep-08	Oct-08	Nov-08	Dec-08	Jan-09	Feb-09	Year to Date
Blue Line	80	48	160	112	152	240	320	352	328	512	400	488	3,192
Red Line	80	48	368	344	344	392	264	352	328	360	280	264	3,424
Green Line	0	0	0	0	0	0	0	0	0	0	0	0	0
Gold Line	0	0	0	0	0	0	0	0	0	80	8	0	88
Totals	160	96	528	456	496	632	584	704	656	952	688	752	6,704

February 2009 - Lost Work Hours



■ Blue Line ■ Red Line ■ Green Line ■ Gold Line

Year-to-Date Lost Work Hours



■ Blue Line ■ Red Line ■ Green Line ■ Gold Line

	Employees		February 2009 Lost Work Hours		
	Assigned	Active	Service Attendant	Maint. Specialist	February 2009 Total Hrs.
Blue Line	104	98	0	488	488
Red Line	107	102	264	0	264
Green Line	51	50	0	0	0
Gold Line	51	50	0	8	0
Totals	313	300	264	496	752
Total Lost Work Hours for 12-months = 6,704 hours					

# Rail Vehicle Accidents & Major Incidents

## February 2009

	Mar-08	Apr-08	May-08	Jun-08	Jul-08	Aug-08	Sep-08	Oct-08	Nov-08	Dec-08	Jan-09	Feb-09	Totals
Blue Line	\$4,235	\$1,789	\$2,473	\$1,412	\$14,603	\$7,308	\$55,579	\$1,672	\$1,312	\$20,456	\$79,318	\$3,716	\$190,157
Red Line	\$274	\$0	\$0	\$418	\$0	\$3,127	\$0	\$0		\$0	\$0	\$0	\$3,819
Green Line	\$0	\$0	\$0	\$0	\$0	\$0	\$15,758	\$0	\$4,181	\$0	\$0	\$0	\$19,939
Gold Line	\$0	\$0	\$0	\$0	\$0	\$3,504	\$0	\$0		\$0	\$0	\$0	\$3,504
Totals	\$4,509	\$1,789	\$2,473	\$1,830	\$14,603	\$13,939	\$71,337	\$1,672	\$5,493	\$20,456	\$79,318	\$3,716	\$217,419

Rail Vehicle Accident Costs - February 2009			
2009	Problem code	Incident Description	Cost
February 12	10-73 - Train vs. Vehicle Blue Line	Auto turning left in front of train car #168B-162-164 @ Naomi	\$2,060
February 17	10-71 - Train vs. Object Blue Line	S/bound train 9 collision with debris on Track 2 @41st Street/LB Cars 131a-108	\$1,656
Blue Line Total Repair Cost			\$3,716
No accidents for Red, Green & Gold Lines			
(10-71) = Train vs. Object, (10-72) = Train vs. Pedestrian, (10-73) = Train vs. Vehicle, (10-74) = Train vs. MTA Vehicle, (10-75) = Derailment			



Car 168B from accident on 02-12-09

*(The monthly accident charges listed represent only the expenses incurred in that particular month and are not a total repair of an individual accident.)*

# Service Delivery – AM/PM Pull-Outs

## February 2009

### Cars Available for AM/PM Pull-Outs

#### Blue Line – Fleet Size 69 cars

- Weekday pull-out: 60 cars
- Weekend pull-out: 36 cars
- **Monthly Mileage: 375,140 miles**

#### Red Line - Fleet Size 104 cars

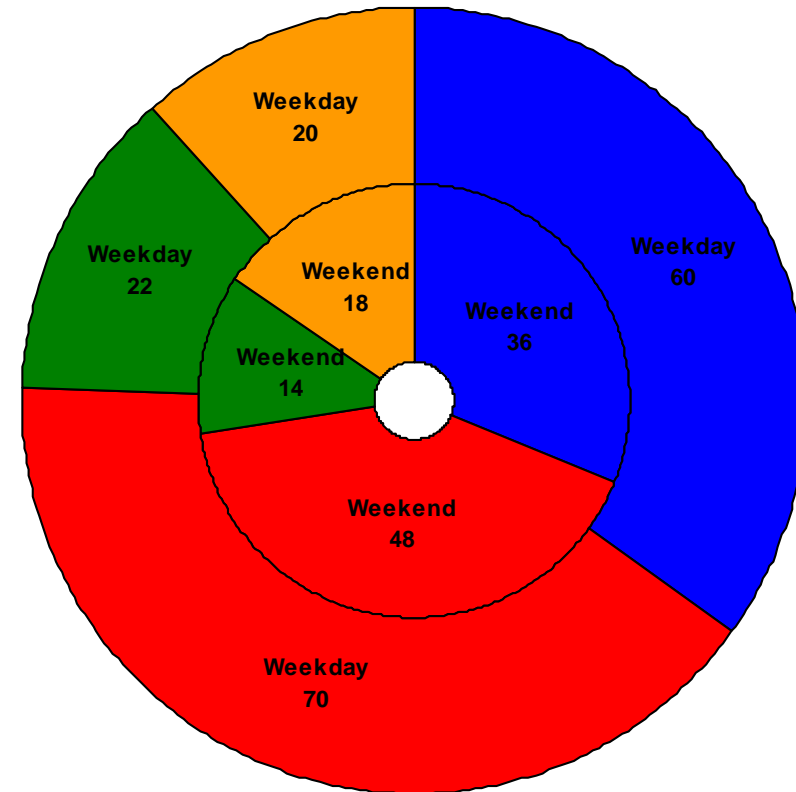
- Weekday pull-out: 70 cars
- Weekend pull-out: 48 cars
- **Monthly Mileage: 496,580 miles**

#### Green Line – Fleet Size 28 cars

- Weekday pull-out: 22 cars
- Weekend pull-out: 14 cars
- **Monthly Mileage: 201,516 miles**

#### Gold Line – Fleet Size 41 cars

- Weekday pull-out: 20 cars
- Weekend pull-out: 18 cars
- **Monthly Mileage: 142,938 miles**

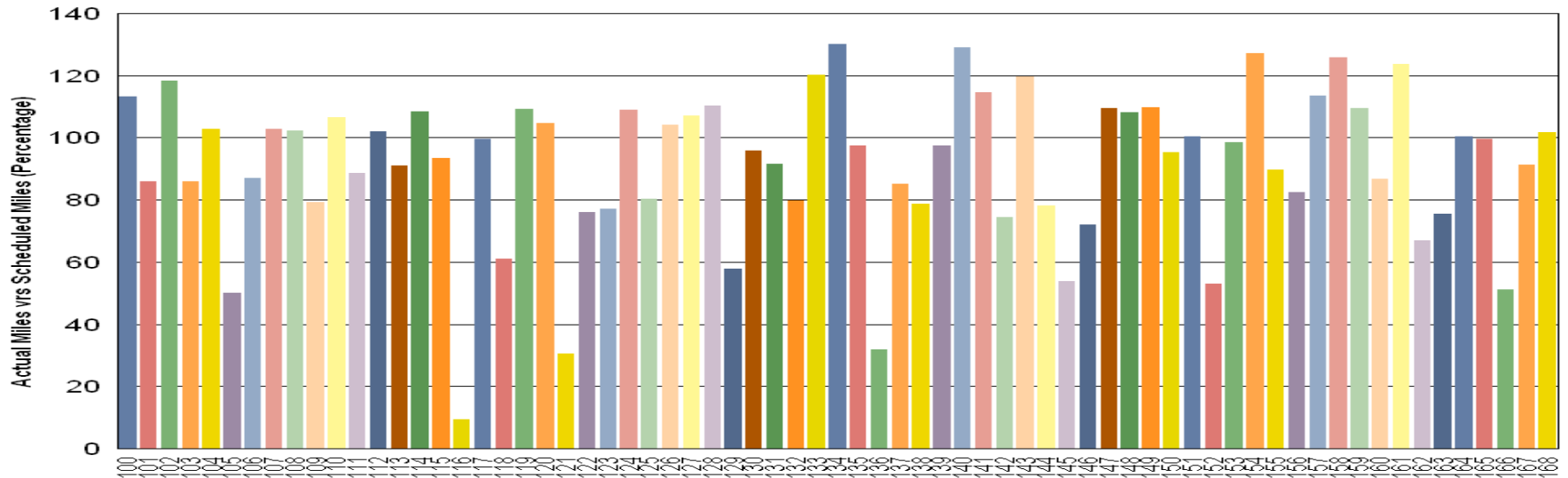


■ Blue Line   ■ Red Line   ■ Green Line   ■ Gold Line

# VEHICLE UTILIZATION

## February 2009

Blue Line

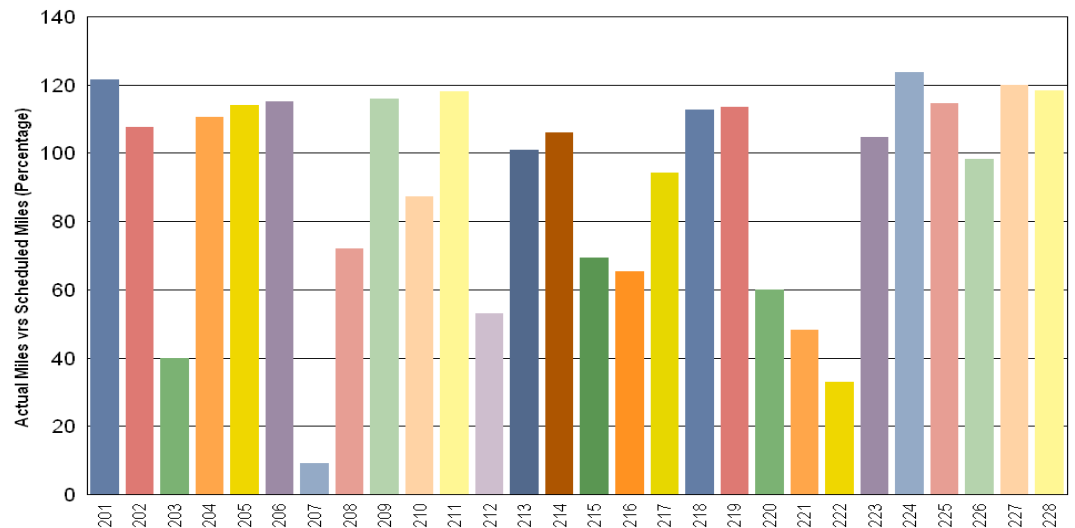


Blue Line - Car 116 has been in the Body & Paint Shop for accident repairs & roof repairs.

Green Line - Car 207 has numerous EMI faults.

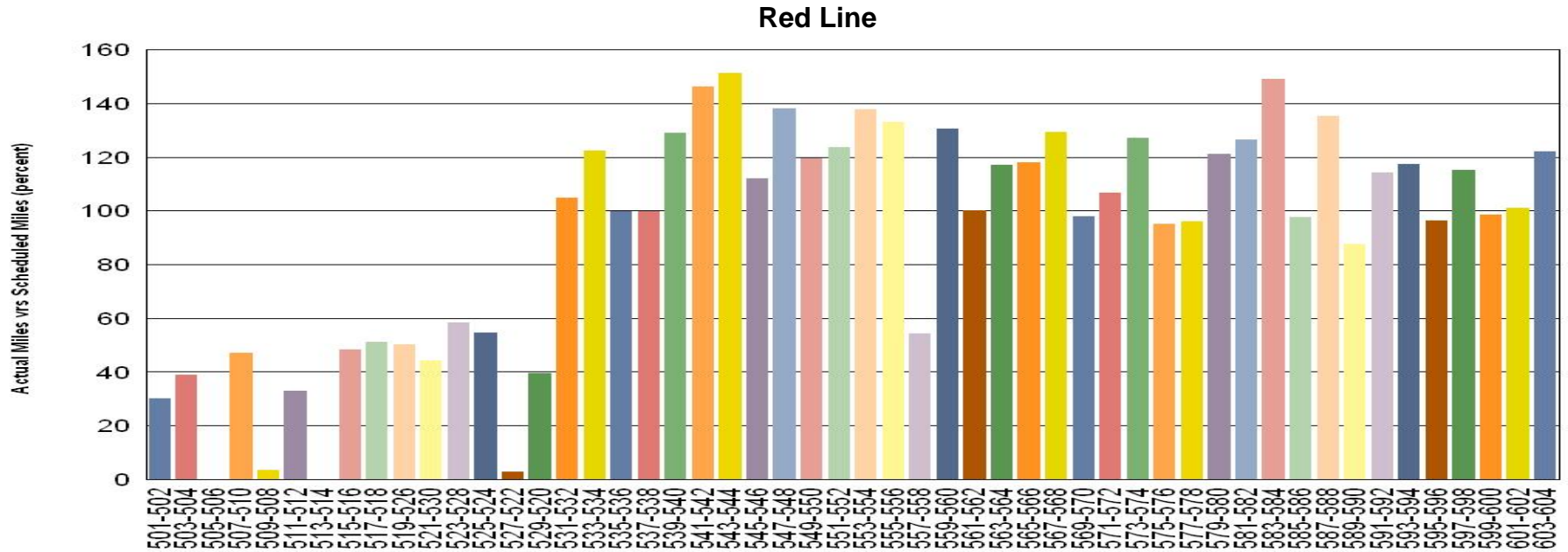
Percentage includes an average 4% mileage deduction for Yard mileage and Vehicle Testing.

Green Line



# VEHICLE UTILIZATION

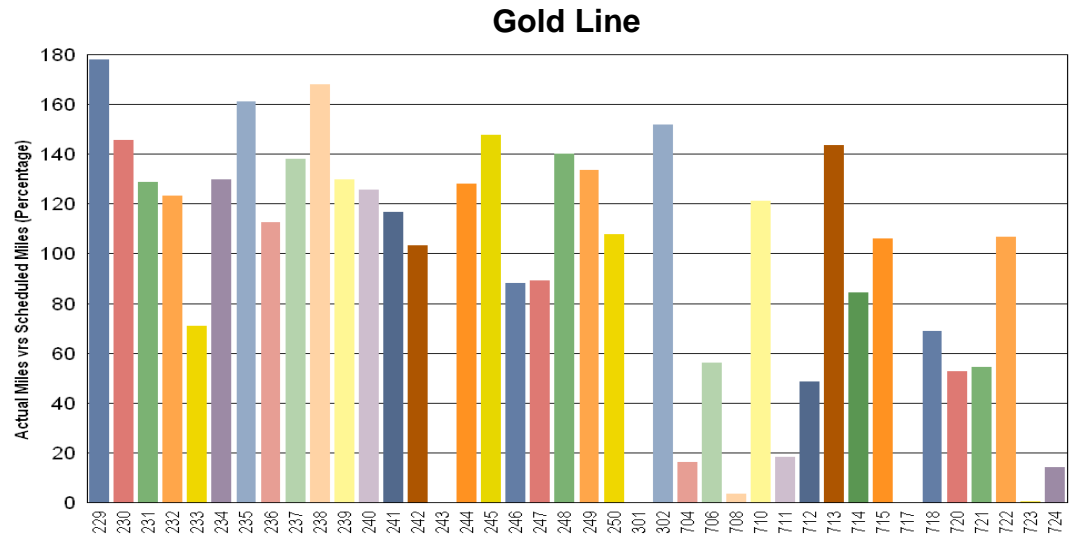
## February 2009



**Red Line** - The original 30 Base Buy cars are not being used to their fullest potential so the remaining Option Buy cars are forced to pick up the slack. Cars 509/508 & 527/522 have propulsion problems.

**Gold Line** - Car 243 is in Sacramento having its fire damage repaired. Car 301 had friction brakes failures. Car 708 out of service due to Material holds & car 717 has failure for brake rotors. Car # 723 was just accepted recently.

Percentage includes an average 4% mileage deduction for Yard mileage and Vehicle Testing.



# Mean Miles Between Failures (Major) February 2009

## Miles Between Major Failures

**Blue Line:** 19,744 miles ( 19 Major Failures )

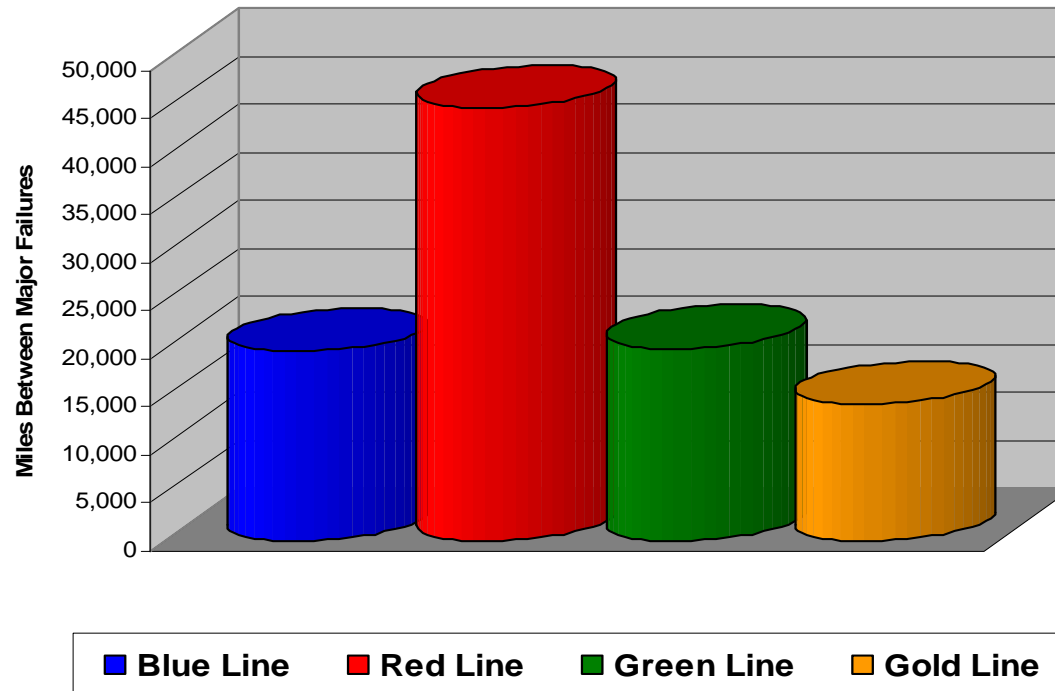
**Red Line:** 45,144 miles ( 11 Major Failures )

**Green Line:** 20,152 miles ( 10 Major Failures )

**Gold Line:** 14,294 miles ( 10 Major Failures )

**Siemens P2000** 15,306 miles (7 Major Failures)

**AnsaldoBreda P2550** 11,931 miles (3 Major Failures)





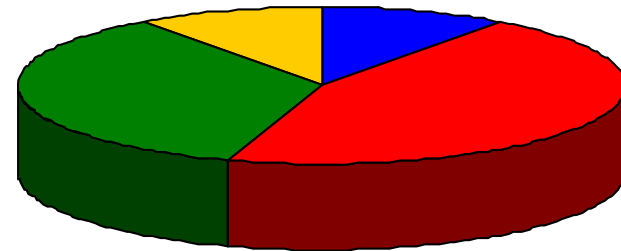
# Repeat Failures (Major) February 2009

Blue Line: 2 Repeat Failures

Red Line: 9 Repeat Failures

Green Line: 7 Repeat Failures

Gold Line: 2 Repeat Failures



■ Blue Line ■ Red Line ■ Green Line ■ Gold Line

## Repeater Car Details - February 2009

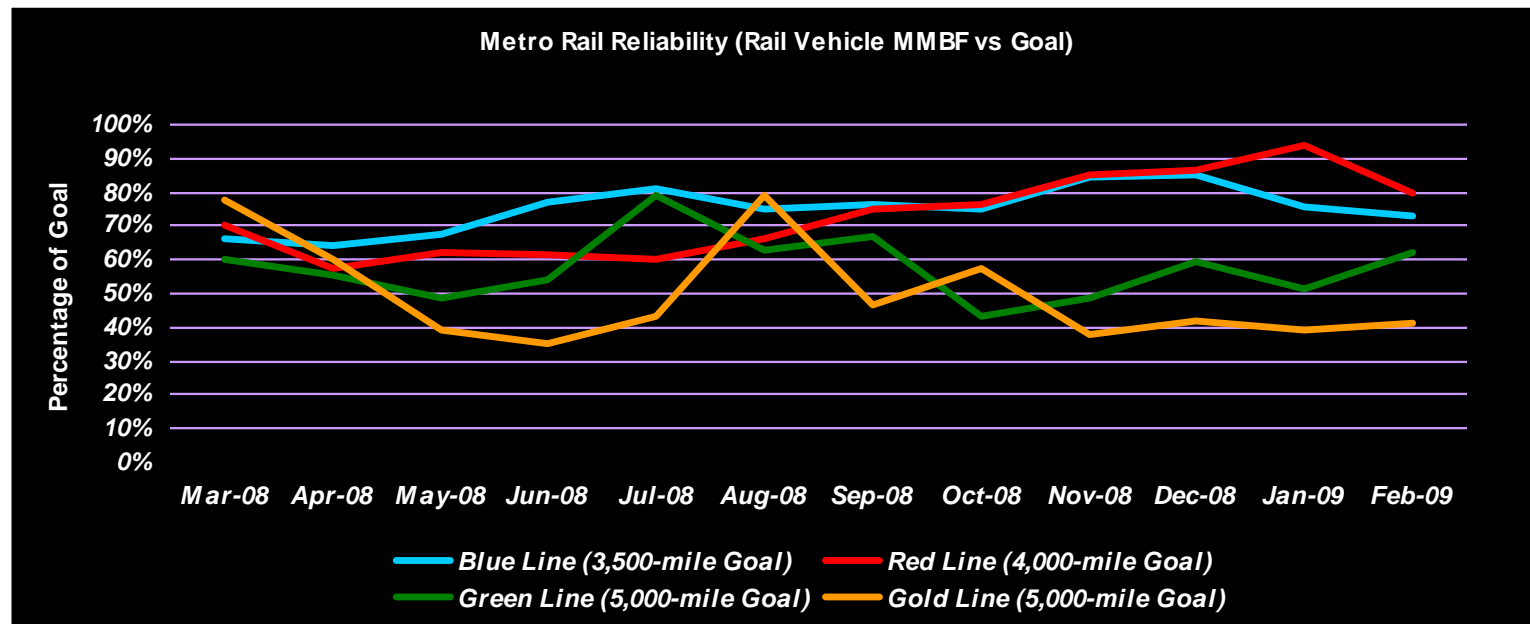
System	Blue Line		Red Line		Green Line		Gold Line	
	Car #	No. of Repeats	Car #	No. of Repeats	Car #	No. of Repeats	Car #	No. of Repeats
ATO			563	3				
Doors			541	2				
			566	2				
Friction Brakes					200	2		
Propulsion/Dynamic Brake	148	2	582	2	215	2	241	2
Truck/Wheel/Flats					211	3		
TOTALS	2		9		7		2	

*Repeat Failure: When a train car has two or more major repeat problems/failures.*

# Metro Rail Reliability

## February 2009

	Mar-08	Apr-08	May-08	Jun-08	Jul-08	Aug-08	Sep-08	Oct-08	Nov-08	Dec-08	Jan-09	Feb-09
Blue Line Rail Vehicle Incidents	176	178	173	149	148	156	151	161	131	138	153	147
Blue Line Monthly Mileage	406,275	401,881	410,888	400,058	421,632	411,301	403,361	424,466	385,704	412,565	406,932	375,140
Blue Line MMBF	2,308	2,258	2,375	2,685	2,849	2,637	2,671	2,636	2,944	2,990	2,660	2,552
Blue Line (3,500-mile Goal)	66%	65%	68%	77%	81%	75%	76%	75%	84%	85%	76%	73%
Red Line Rail Vehicle Incidents	192	228	212	209	221	199	182	186	159	163	152	156
Red Line Monthly Mileage	539,274	524,452	528,698	513,141	532,394	529,268	544,302	569,212	542,756	563,404	570,736	496,580
Red/Purple Line MMBF	2,809	2,300	2,494	2,455	2,409	2,660	2,991	3,060	3,414	3,456	3,755	3,183
Red Line (4,000-mile Goal)	70%	58%	62%	61%	60%	66%	75%	77%	85%	86%	94%	80%
Green Line Rail Vehicle Incidents	73	79	90	78	55	68	68	110	90	78	86	65
Green Line Monthly Mileage	219,499	218,303	219,499	211,045	217,035	214,560	226,339	237,068	217,632	231,429	220,425	201,516
Green Line MMBF	3,007	2,763	2,439	2,706	3,946	3,155	3,329	2,155	2,418	2,967	2,563	3,100
Green Line (5,000-mile Goal)	60%	55%	49%	54%	79%	63%	67%	43%	48%	59%	51%	62%
Gold Line Rail Vehicle Incidents	39	49	76	83	70	38	63	54	82	76	82	69
Gold Line Monthly Mileage	151,044	147,591	149,693	146,598	152,075	150,466	147,380	154,222	155,276	158,405	160,928	142,938
Gold Line MMBF	3,873	3,012	1,970	1,766	2,173	3,960	2,339	2,856	1,894	2,084	1,963	2,072
Gold Line (5,000-mile Goal)	77%	60%	39%	35%	43%	79%	47%	57%	38%	42%	39%	41%

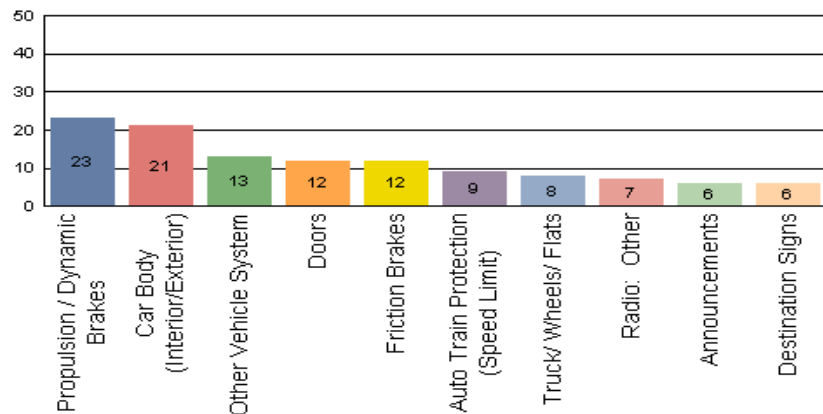


# Incident Problems

## February 2009

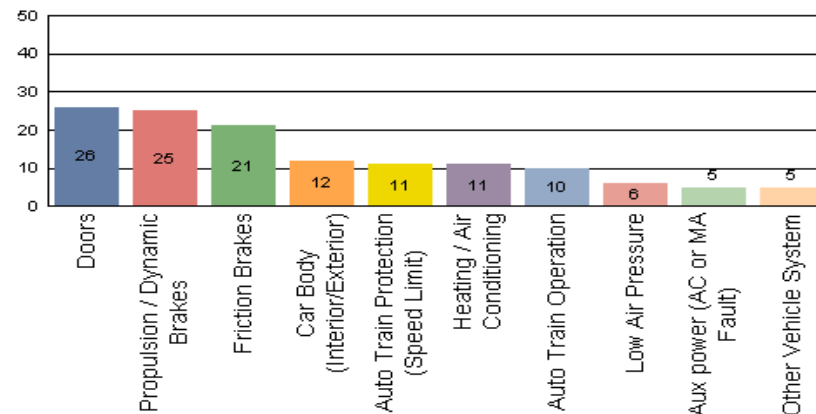
### Blue Line

Count of the Top 10 Incident Problems



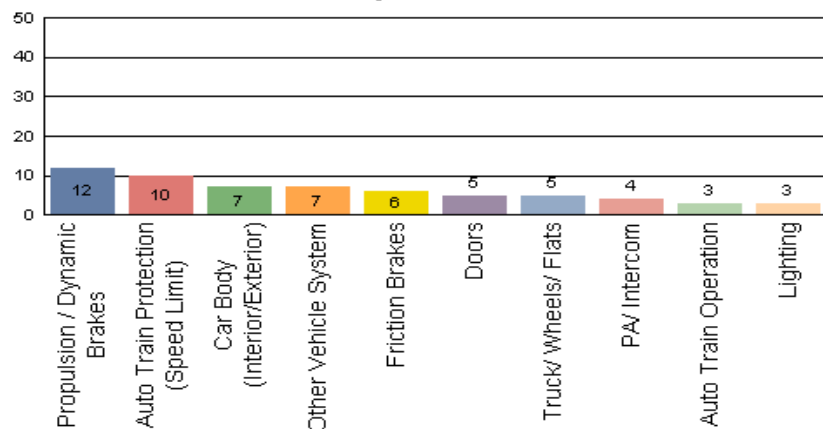
### Red Line

Count of the Top 10 Incident Problems



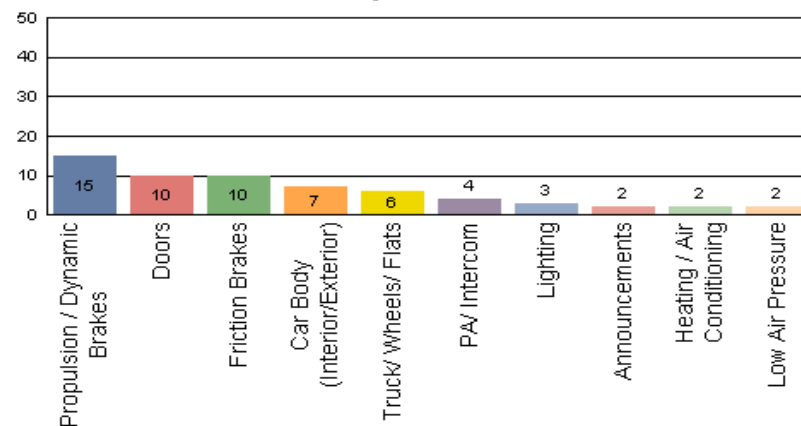
### Green Line

Count of the Top 10 Incident Problems



### Gold Line

Count of the Top 10 Incident Problems



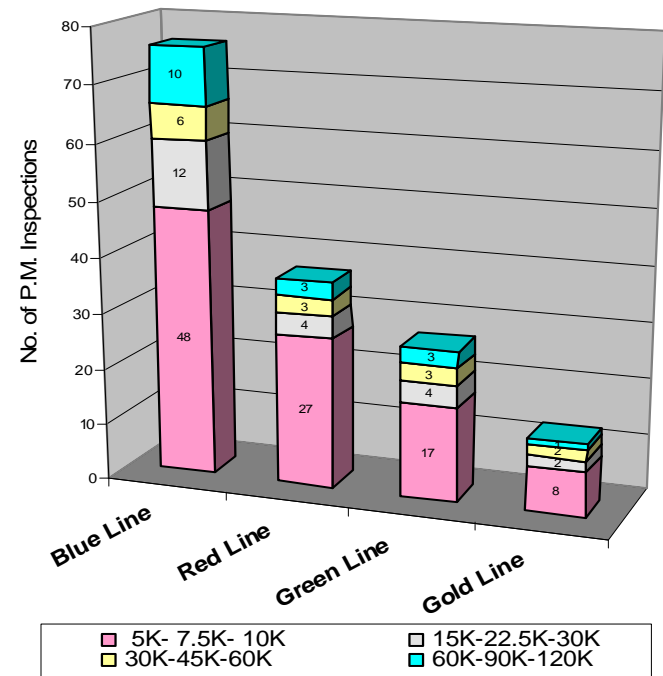
# Preventative Maintenance Compliance

## February 2009

Averages	Mar-08	Apr-08	May-08	Jun-08	Jul-08	Aug-08	Sep-08	Oct-08	Nov-08	Dec-08	Jan-09	Feb-09
<b>Blue Line</b>	100%	100%	100%	97%	100%	100%	96%	100%	100%	100%	100%	100%
<b>Red Line</b>	100%	100%	100%	80%	100%	100%	100%	100%	100%	100%	100%	100%
<b>Green Line</b>	100%	100%	100%	100%	100%	100%	100%	100%	100%	100%	100%	93%
<b>Gold Line</b>	100%	100%	100%	100%	100%	100%	100%	100%	100%	100%	100%	100%

### February 2009 Preventative Maintenance Inspections

No. of P.M. Inspections	5K-7.5K-10K	15K-22.5K-30K	30K-45K-60K	60K-90K-120K	Totals	Percent Compliance
<b>Blue Line</b>	48	12	6	10	76	100%
<b>Red Line</b>	27	4	3	3	37	100%
<b>Green Line</b>	17	4	3	3	27	93%
<b>Gold Line</b>	8	2	2	1	13	100%
<b>Totals:</b>	100	22	14	17	153	98%



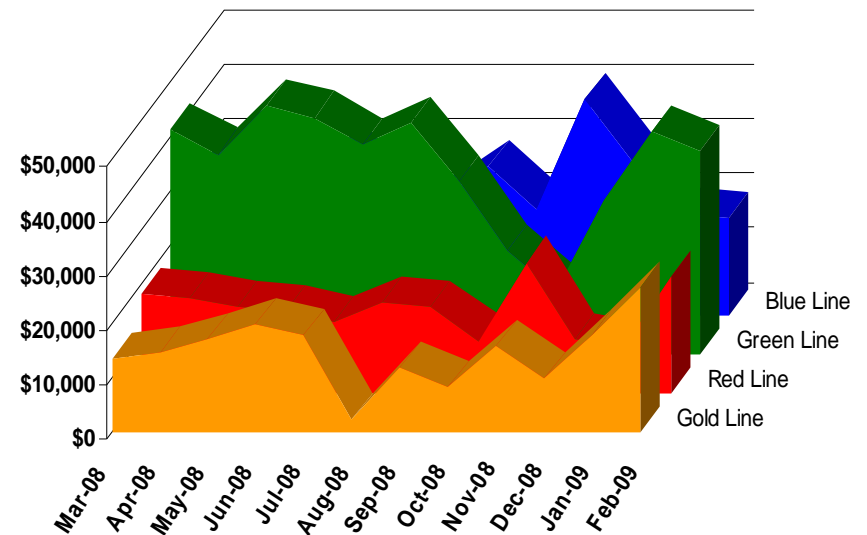
# Vandalism & Graffiti Report

## February 2009

Graffiti Costs - February 2009

	Mar-08	Apr-08	May-08	Jun-08	Jul-08	Aug-08	Sep-08	Oct-08	Nov-08	Dec-08	Jan-09	Feb-09	Year-to-Date
Blue Line	\$27,270	\$33,717	\$22,258	\$30,483	\$19,055	\$21,297	\$27,169	\$19,172	\$39,722	\$27,949	\$18,498	\$17,708	\$304,298
Green Line	\$41,259	\$36,670	\$45,594	\$43,424	\$38,306	\$42,483	\$31,715	\$19,070	\$11,424	\$28,128	\$40,809	\$37,117	\$415,999
Red Line	\$18,388	\$17,477	\$15,881	\$15,127	\$13,153	\$16,728	\$15,743	\$9,744	\$24,038	\$9,790	\$8,504	\$21,465	\$186,038
Gold Line	\$13,544	\$14,864	\$17,174	\$19,888	\$17,978	\$2,372	\$11,825	\$8,344	\$16,094	\$10,040	\$18,107	\$26,625	\$176,855
Totals	\$100,461	\$102,728	\$100,907	\$108,922	\$88,492	\$82,880	\$86,452	\$56,330	\$91,278	\$75,907	\$85,918	\$102,915	\$1,083,190

February 2009 Vandalism & Graffiti - All Rail				
	Qty	Labor	Materials	Totals
Windows replaced	24	\$5,198	\$7,625	\$ 12,823
Vandal Shields	562	\$13,672	\$8,722	\$ 22,394
Vandal Shields - Other	116	\$2,063	\$716	\$ 2,779
Seats Cleaned	5,662	\$13,834	\$0	\$ 13,834
Seats Replaced	138	\$3,833	\$5,887	\$ 9,720
Ext/Int Repairs	1,402	\$32,039	\$5,426	\$ 37,465
Totals for December 2008		\$74,539	\$28,376	\$102,915



# Vandalism & Graffiti Pictures

## February 2009

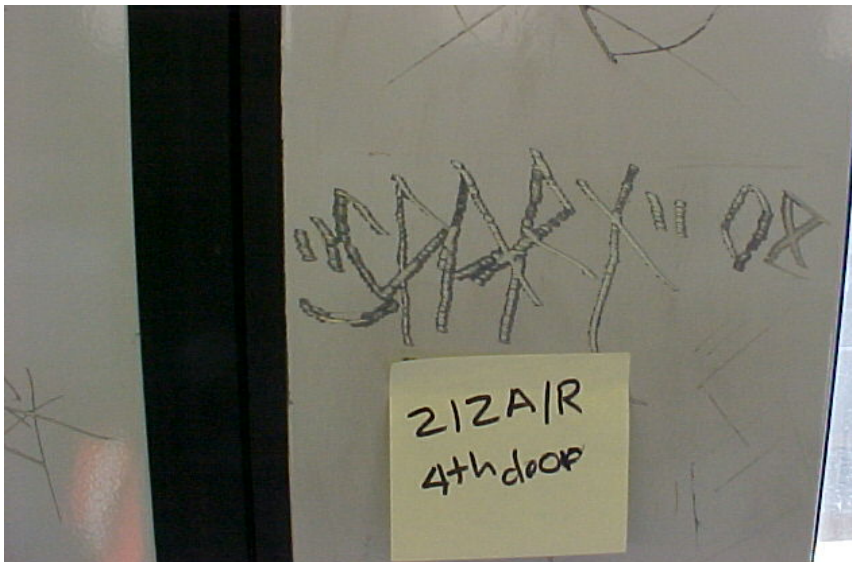
A



B



C



D

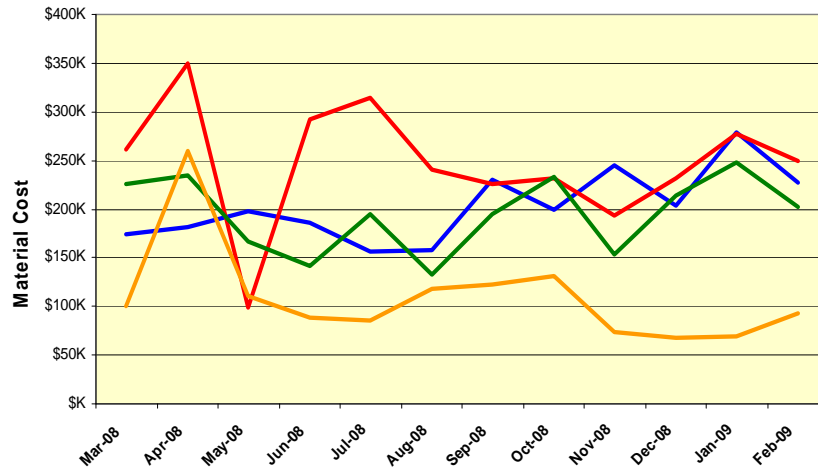


# Material and Labor Costs

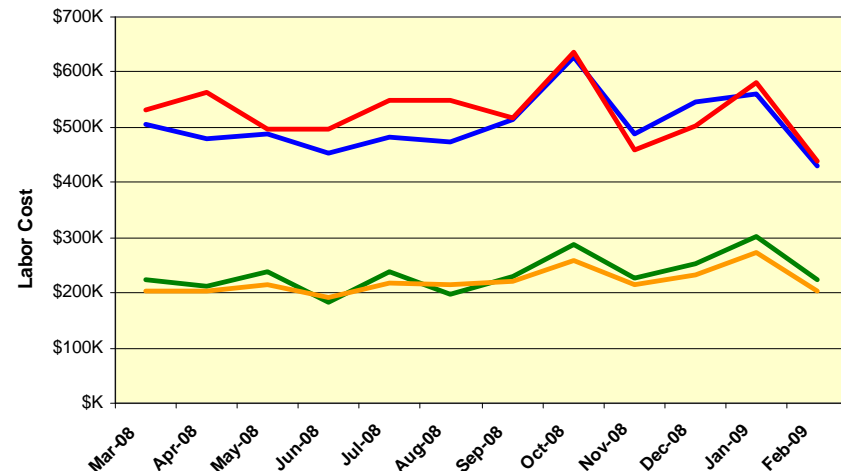
## February 2009

<b>MATERIALS</b>	<b>Mar-08</b>	<b>Apr-08</b>	<b>May-08</b>	<b>Jun-08</b>	<b>Jul-08</b>	<b>Aug-08</b>	<b>Sep-08</b>	<b>Oct-08</b>	<b>Nov-08</b>	<b>Dec-08</b>	<b>Jan-09</b>	<b>Feb-09</b>	<b>Totals</b>
<b>Blue Line</b>	<b>\$174K</b>	<b>\$181K</b>	<b>\$197K</b>	<b>\$185K</b>	<b>\$156K</b>	<b>\$157K</b>	<b>\$230K</b>	<b>\$199K</b>	<b>\$244K</b>	<b>\$204K</b>	<b>\$279K</b>	<b>\$227K</b>	<b>\$2,435K</b>
<b>Red Line</b>	<b>\$261K</b>	<b>\$349K</b>	<b>\$99K</b>	<b>\$292K</b>	<b>\$314K</b>	<b>\$240K</b>	<b>\$225K</b>	<b>\$232K</b>	<b>\$193K</b>	<b>\$232K</b>	<b>\$277K</b>	<b>\$249K</b>	<b>\$2,964K</b>
<b>Green Line</b>	<b>\$225K</b>	<b>\$235K</b>	<b>\$166K</b>	<b>\$142K</b>	<b>\$194K</b>	<b>\$133K</b>	<b>\$195K</b>	<b>\$233K</b>	<b>\$153K</b>	<b>\$214K</b>	<b>\$248K</b>	<b>\$202K</b>	<b>\$2,341K</b>
<b>Gold Line</b>	<b>\$101K</b>	<b>\$260K</b>	<b>\$110K</b>	<b>\$88K</b>	<b>\$85K</b>	<b>\$118K</b>	<b>\$123K</b>	<b>\$132K</b>	<b>\$74K</b>	<b>\$68K</b>	<b>\$69K</b>	<b>\$92K</b>	<b>\$1,320K</b>
<b>Totals</b>	<b>\$761K</b>	<b>\$1,025K</b>	<b>\$572K</b>	<b>\$707K</b>	<b>\$750K</b>	<b>\$649K</b>	<b>\$774K</b>	<b>\$795K</b>	<b>\$665K</b>	<b>\$717K</b>	<b>\$873K</b>	<b>\$771K</b>	<b>\$9,060K</b>

**Material Costs**



**Labor Costs**



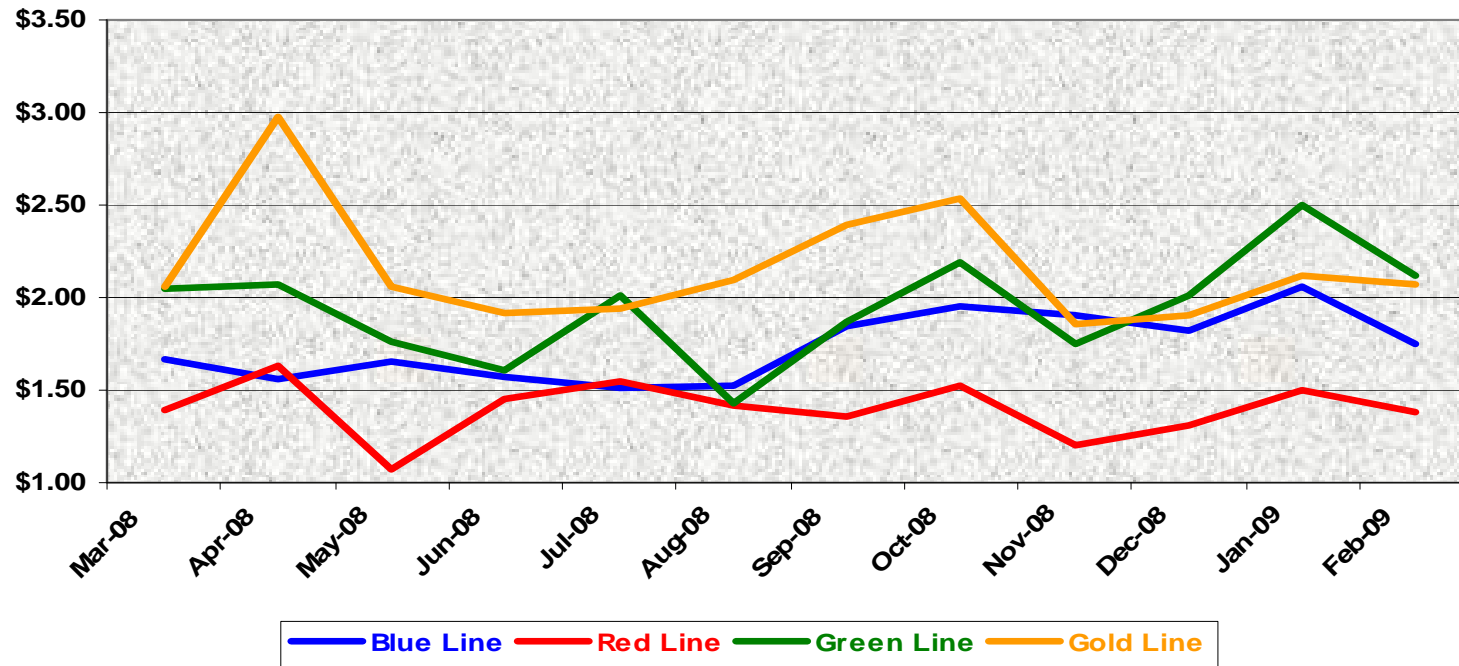
<b>LABOR</b>	<b>Mar-08</b>	<b>Apr-08</b>	<b>May-08</b>	<b>Jun-08</b>	<b>Jul-08</b>	<b>Aug-08</b>	<b>Sep-08</b>	<b>Oct-08</b>	<b>Nov-08</b>	<b>Dec-08</b>	<b>Jan-09</b>	<b>Feb-09</b>
<b>Blue Line</b>	<b>\$505K</b>	<b>\$479K</b>	<b>\$487K</b>	<b>\$454K</b>	<b>\$483K</b>	<b>\$473K</b>	<b>\$513K</b>	<b>\$628K</b>	<b>\$489K</b>	<b>\$547K</b>	<b>\$560K</b>	<b>\$429K</b>
<b>Red Line</b>	<b>\$530K</b>	<b>\$563K</b>	<b>\$498K</b>	<b>\$496K</b>	<b>\$549K</b>	<b>\$548K</b>	<b>\$516K</b>	<b>\$637K</b>	<b>\$460K</b>	<b>\$503K</b>	<b>\$579K</b>	<b>\$440K</b>
<b>Green Line</b>	<b>\$225K</b>	<b>\$211K</b>	<b>\$239K</b>	<b>\$184K</b>	<b>\$237K</b>	<b>\$196K</b>	<b>\$229K</b>	<b>\$287K</b>	<b>\$227K</b>	<b>\$252K</b>	<b>\$302K</b>	<b>\$225K</b>
<b>Gold Line</b>	<b>\$202K</b>	<b>\$202K</b>	<b>\$216K</b>	<b>\$192K</b>	<b>\$217K</b>	<b>\$214K</b>	<b>\$220K</b>	<b>\$260K</b>	<b>\$214K</b>	<b>\$233K</b>	<b>\$272K</b>	<b>\$205K</b>
<b>Totals</b>	<b>\$1,462K</b>	<b>\$1,454K</b>	<b>\$1,440K</b>	<b>\$1,326K</b>	<b>\$1,486K</b>	<b>\$1,431K</b>	<b>\$1,479K</b>	<b>\$1,812K</b>	<b>\$1,390K</b>	<b>\$1,535K</b>	<b>\$1,713K</b>	<b>\$1,298K</b>



# Cost Per Mile

## February 2009

Cost per mile:	Mar-08	Apr-08	May-08	Jun-08	Jul-08	Aug-08	Sep-08	Oct-08	Nov-08	Dec-08	Jan-09	Feb-09	Average
Blue Line	\$1.67	\$1.56	\$1.66	\$1.58	\$1.51	\$1.52	\$1.84	\$1.95	\$1.90	\$1.82	\$2.06	\$1.75	\$1.69
Red Line	\$1.39	\$1.64	\$1.07	\$1.45	\$1.55	\$1.42	\$1.36	\$1.53	\$1.20	\$1.31	\$1.50	\$1.39	\$1.40
Green Line	\$2.05	\$2.07	\$1.76	\$1.61	\$2.01	\$1.43	\$1.87	\$2.19	\$1.75	\$2.01	\$2.50	\$2.12	\$1.86
Gold Line	\$2.05	\$2.97	\$2.06	\$1.91	\$1.94	\$2.10	\$2.40	\$2.54	\$1.86	\$1.90	\$2.12	\$2.08	\$2.20



No facility costs are included



# Rail Fleet Services Instruction

## February 2009

### Training classes completed during the month of February 2009

February 2009

Description	Status	Start	End	Course Hours	Student Count	Training Hours
<b>Blue Line Training (Nippon Sharyo P865/P2020 LRV):</b>						
RFS ANSALDOBREDA 2550 VENDOR	Complete	2/2/2009	2/27/2009	104	3	312
MOP ADA REASONABLE ACCOMMODATION	Complete	2/11/2009	2/11/2009	4	1	4
HAZARD COMMUNICATION TRAINING	Complete	2/26/2009	2/26/2009	4	2	8
TOOLBOX HAZCOM GENERAL (101)	Complete	2/4/2009	2/4/2009	0.25	1	0.25
Fire Safety (Video)	Complete	2/3/2009	2/21/2009	2	4	8
DIRECT DEPOSIT SELF SERVICE TRAINING	Complete	2/19/2009	2/19/2009	0.75	1	0.75
Hearing Protection (Video)	Complete	2/12/2009	2/12/2009	2	1	2
Electrical Safety (Video)	Complete	2/20/2009	2/21/2009	2	2	4
Back Safety (Video)	Complete	2/5/2009	2/18/2009	2	4	8
BLOODBORNE PATHOGENS (VIDEO)	Complete	2/5/2009	2/18/2009	2	7	14
RFS SIEMENS 2000 AUX. INVERTER	Complete	2/24/2009	2/26/2009	24	3	72
FALL PROTECTION	Complete	2/17/2009	2/17/2009	2	1	2
TRANSIT TERRORISM AWARENESS TRAINING	Complete	2/18/2009	2/18/2009	1	1	1
HAZARD COMMUNICATION: IDENTIFYING THE DANGERS	Complete	2/11/2009	2/11/2009	2	1	2
MOP DIVERSITY TRAINING	Complete	2/12/2009	2/12/2009	3.5	1	3.5
EFFECTIVE MEETINGS	Complete	2/25/2009	2/25/2009	3	1	3
ETD DEVELOPING YOUR FULL POTENTIAL	Complete	2/11/2009	2/11/2009	1	1	1

**Total Blue Line Training (Hours): 445.5**

<b>Red Line Training (Breda A650 HRV):</b>						
TOOLBOX FIRE PROTECTION (601)	Complete	2/24/2009	2/24/2009	0.25	13	3.25
TOOLBOX HAZCOM EXPOSURE (104)	Complete	2/17/2009	2/25/2009	0.25	71	17.75
TOOLBOX HAZCOM MSDS (103)	Complete	2/10/2009	2/18/2009	0.25	35	8.75
TOOLBOX HAZCOM LABELS (102)	Complete	2/3/2009	2/11/2009	0.25	50	12.5
TOOLBOX HAZCOM GENERAL (101)	Complete	2/4/2009	2/4/2009	0.25	38	9.5
OUTLOOK 2003 - BEGINNER	Complete	2/12/2009	2/12/2009	3	1	3
ELECTRONIC CHECK REQUEST	Complete	2/19/2009	2/19/2009	1	1	1
MOP DIVERSITY TRAINING	Complete	2/12/2009	2/12/2009	3.5	1	3.5
WORD 2003 - INTERMEDIATE	Complete	2/23/2009	2/23/2009	3.5	1	3.5
OUTLOOK 2003 - INTERMEDIATE	Complete	2/18/2009	2/18/2009	3	1	3
ETD DEVELOPING YOUR FULL POTENTIAL	Complete	2/11/2009	2/11/2009	3	1	3
ADULT CPR/AED	Complete	2/24/2009	2/24/2009	4.75	2	9.5

**Total Red Line Training (Hours): 78.25**

<b>Green Line Training (Siemens P2000 LRVs):</b>						
MOP ADA REASONABLE ACCOMMODATION	Complete	2/11/2009	2/11/2009	4	1	4
FORKLIFT, OSHA REFRESHER	Complete	2/3/2009	2/3/2009	2	1	2
SAFETY ORIENTATION FOR MANAGERS	Complete	2/24/2009	2/27/2009	32	2	64
RFS SIEMENS 2000 AUX. INVERTER	Complete	2/24/2009	2/26/2009	24	3	72
OUTLOOK 2003 - BEGINNER	Complete	2/12/2009	2/12/2009	3	1	3
FRONTLINE SAFETY TRAINING	Complete	2/23/2009	2/23/2009	3	1	3
MOP DIVERSITY TRAINING	Complete	2/12/2009	2/12/2009	3.5	1	3.5
MOP SEXUAL HARASSMENT PREVENTION AND TITLE VII	Complete	2/9/2009	2/9/2009	2	1	2
EFFECTIVE MEETINGS	Complete	2/25/2009	2/25/2009	3	1	3

**Total Green Line Training (Hours): 153.5**

<b>Gold Line Training (P2550 &amp; P2000 LRVs):</b>						
RFS ANSALDOBREDA 2550 DOORS	Complete	2/26/2009	2/27/2009	16	4	64
RFS ANSALDOBREDA 2550 COUPLER	Complete	2/24/2009	2/24/2009	8	4	32
RFS ANSALDOBREDA 2550 TRUCKS	Complete	2/17/2009	2/20/2009	20	4	80
RFS ANSALDOBREDA 2550 CARBODY	Complete	2/11/2009	2/13/2009	16	4	64
RFS ANSALDOBREDA 2550 INTEGRATED DISPLAY	Complete	2/11/2009	2/11/2009	8	4	32
RFS ANSALDOBREDA 2550 COMMUNICATIONS	Complete	2/5/2009	2/9/2009	24	4	96
RFS ANSALDOBREDA 2550 LIGHTING	Complete	2/2/2009	2/2/2009	4	4	16
RFS ANSALDOBREDA 2550 PANTOGRAPH	Complete	2/3/2009	2/3/2009	8	4	32

**Total Gold Line Training (Hours): 352**

**Total Rail Fleet Services Instruction for the month of February 2009 (Hours): 1,029.3**

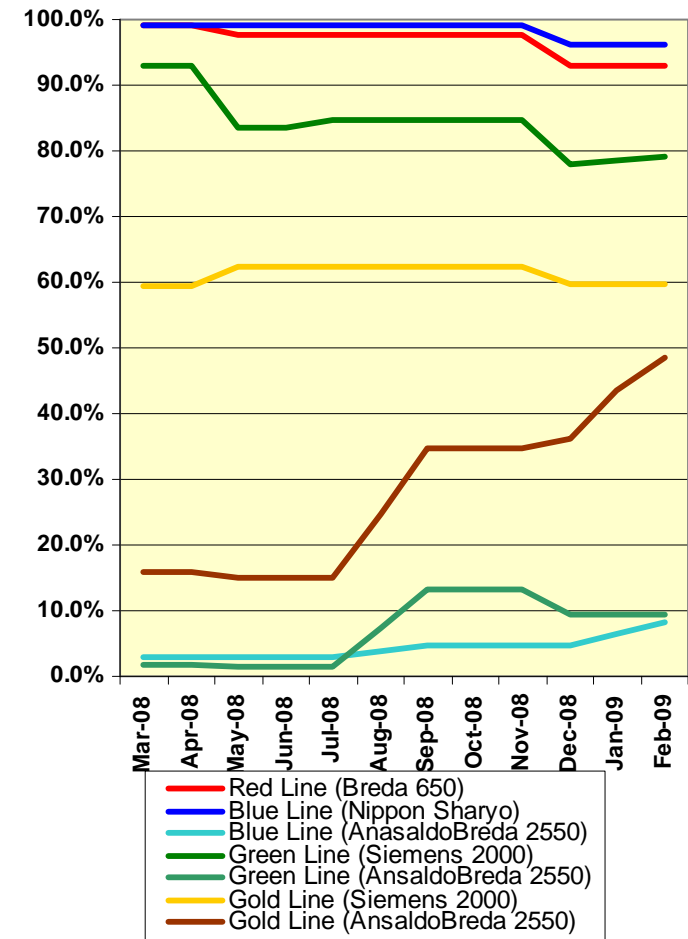
**Core Vehicle Training Completed:** BLUE RED GREEN GOLD

**Percentage of core vehicle training complete:** 96.2% 93.0% 79.0% 59.6%

**AnsaldoBreda 2550 Training Completed:** 8.3% N/A 9.3% 48.4%

**Average Specialist Rail Experience Level in Years:** 10.0 8.1 7.4 7.6

### Core Training Completed



Variations caused by new hires, employee transfers, & training completed

# Absences vs. Overtime

## February 2009

ABSENCE TYPE and HOURS	3940	3941	3942	3943	3944	Total
BER-BEREAVEMENT	0.00	0.00	40.00	0.00	24.00	64.00
CTO-COMPENSATORY TIME OFF	0.00	222.95	211.63	127.00	70.00	631.58
CVA - CASUAL VACATION	64.00	0.00	496.00	16.00	0.00	576.00
DSL-DISABILITY LEAVE/LONG	0.00	424.00	448.00	0.00	168.00	1,040.00
EFH-EMG. FLOAT HOL.	0.00	0.00	112.00	8.00	8.00	128.00
ETO-EXCUSED TIME OFF	5.93	20.48	5.43	12.00	0.00	43.84
FML-FAMILY CARE LEAVE	0.00	336.08	136.00	96.00	16.00	584.08
HLF-HOLIDAY FLOATING	8.00	152.00	168.00	48.00	120.00	496.00
II-INDUSTRIAL INJURY	0.00	160.00	0.00	0.00	0.00	160.00
JUR-JURY DUTY	0.00	8.00	8.00	16.00	0.00	32.00
LC1-LABOR CODE 233	16.00	383.50	356.78	128.50	104.00	988.78
LTI-OCCPIL/LONGTRM INJ LEAVE	0.00	328.00	264.00	0.00	0.00	592.00
OWP-OFF WITH PERMISSION	0.00	0.00	20.37	0.00	0.00	20.37
RTO-REQUESTED TIME OFF-NO PAY	0.00	12.80	0.00	2.00	0.00	14.80
SCK-SICK PAY	0.00	136.00	193.00	96.00	128.00	553.00
SCW-SICK WITHOUT PAY	0.00	64.00	32.00	24.00	0.00	120.00
SUP-TEMPORARY SUPERVISOR	0.00	287.60	163.48	281.00	184.00	916.08
VAC-VACATION	4.00	462.72	48.00	220.00	148.00	882.72
<b>Total</b>	<b>97.93</b>	<b>2,998.13</b>	<b>2,702.69</b>	<b>1,074.50</b>	<b>970.00</b>	<b>7,843.25</b>
OVERTIME TYPE and HOURS	3940	3941	3942	3943	3944	Total
CTB-COMPENSATORY TIME TO BANK	4.00	101.70	34.00	89.66	17.34	246.70
OTP-PREM OVERTIME	192.65	926.36	545.01	1,119.00	495.05	3,278.07
WLO-Worked Lunch Overtime	0.00	12.00	56.50	13.00	5.00	86.50
<b>Total</b>	<b>196.65</b>	<b>1,040.06</b>	<b>635.51</b>	<b>1,221.66</b>	<b>517.39</b>	<b>3,611.27</b>
UNCOVERED ABSENCES	3940	3941	3942	3943	3944	Total
Absences FTE	0.56	17.30	15.59	6.20	5.60	45.25
OTP FTE	1.13	6.00	3.67	7.05	2.98	20.83
<b>FTE Difference</b>	<b>-0.57</b>	<b>11.30</b>	<b>11.93</b>	<b>-0.85</b>	<b>2.61</b>	<b>24.42</b>