



# **Rail Fleet Services Monthly Report January 2009**



**Metro**

# Table of Contents

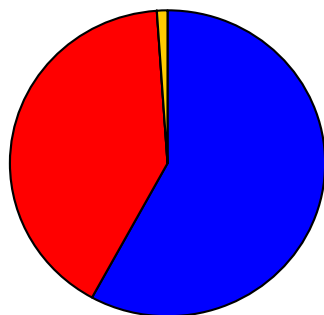
• Safety	
– Industrial Injuries	Page 1
– Rail Vehicle Accidents & Major Incidents	Page 2
• Customer Service	
– Service Delivery – AM/PM Pull-Outs	Page 3
– Vehicle Utilization – Blue Line & Green Line	Page 4
– Vehicle Utilization – Red Line & Gold Line	Page 5
– Mean Miles Between Failures (Major)	Page 6
– Repeaters (Major)	Page 7
– Metro Rail Reliability	Page 8
• Business Processes	
– Incident Problems	Page 9
– Preventative Maintenance Compliance	Page 10
• Finance	
– Vandalism & Graffiti Costs	Page 11
– Graffiti Pictures	Page 12
– Material & Labor Costs	Page 13
– Cost per mile	Page 14
• Growth	
– Rail Fleet Service Training	Page 15
– Absences vs. Overtime	Page 16

# Industrial Injuries – Lost Work Hours

## January 2009

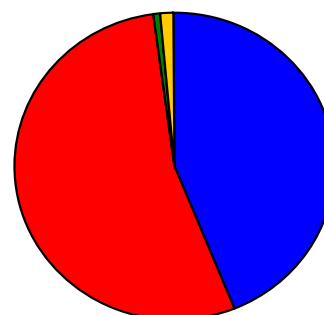
	Feb-08	Mar-08	Apr-08	May-08	Jun-08	Jul-08	Aug-08	Sep-08	Oct-08	Nov-08	Dec-08	Jan-09	Year to Date
Blue Line	0	80	48	160	112	152	240	320	352	328	512	400	2,704
Red Line	184	80	48	368	344	344	392	264	352	328	360	280	3,344
Green Line	24	0	0	0	0	0	0	0	0	0	0	0	24
Gold Line	0	0	0	0	0	0	0	0	0	0	80	8	88
Totals	208	160	96	528	456	496	632	584	704	656	952	688	6,160

January 2009 - Lost Work Hours



■ Blue Line ■ Red Line ■ Green Line ■ Gold Line

Year-to-Date Lost Work Hours



■ Blue Line ■ Red Line ■ Green Line ■ Gold Line

	Employees		January 2009 Lost Work Hours		
	Assigned	Active	Service Attendant	Maint. Specialist	January 2009 Total Hrs.
Blue Line	104	99	168	232	400
Red Line	108	103	280	0	280
Green Line	50	49	0	0	0
Gold Line	51	50	0	8	8
Totals	314	302	448	240	688
Total Lost Work Hours for 12-months = 6,160 hours					

# Rail Vehicle Accidents & Major Incidents

## January 2009

	Feb-08	Mar-08	Apr-08	May-08	Jun-08	Jul-08	Aug-08	Sep-08	Oct-08	Nov-08	Dec-08	Jan-09	Totals
Blue Line	\$497	\$4,235	\$1,789	\$2,473	\$1,412	\$14,603	\$7,308	\$55,579	\$1,672	\$1,312	\$20,456	\$79,318	\$190,654
Red Line	\$0	\$274	\$0	\$0	\$418	\$0	\$3,127	\$0	\$0		\$0	\$0	\$3,819
Green Line	\$289	\$0	\$0	\$0	\$0	\$0	\$0	\$15,758	\$0	\$4,181	\$0	\$0	\$20,228
Gold Line	\$18,388	\$0	\$0	\$0	\$0	\$0	\$3,504	\$0	\$0		\$0	\$0	\$21,892
Totals	\$19,174	\$4,509	\$1,789	\$2,473	\$1,830	\$14,603	\$13,939	\$71,337	\$1,672	\$5,493	\$20,456	\$79,318	\$236,593

Rail Vehicle Accident Costs - January 2009			
2009	Problem code	Incident Description	Cost
January 1	10-71 - Train vs. Object Blue Line	Train Cars #118A-116-148 vs LB transit bus @ 1st/LB	\$78,625
January 20	10-71 - Train vs. Object Blue Line	Train Cars #151-157-103 vs LB transit bus @ PCH	\$0
January 28	10-72 - Train vs Pedestrian Blue Line	Fatality @ Del Amo Station	\$693
Blue Line Total Repair Cost			\$79,318
No accidents for Red, Green & Gold Lines			
(10-71) = Train vs. Object, (10-72) = Train vs. Pedestrian, (10-73) = Train vs. Vehicle (10-74) = Train vs. MTA Vehicle, (10-75) = Derailment			

*The monthly accident charges listed represent only the expenses incurred in that particular month and are not a total repair of an individual accident.*

# Service Delivery – AM/PM Pull-Outs January 2009

## Cars Available for AM/PM Pull-Outs

### Blue Line – Fleet Size 69 cars

- Weekday pull-out: 60 cars
- Weekend pull-out: 36 cars
- **Monthly Mileage: 406,932 miles**

### Red Line - Fleet Size 104 cars

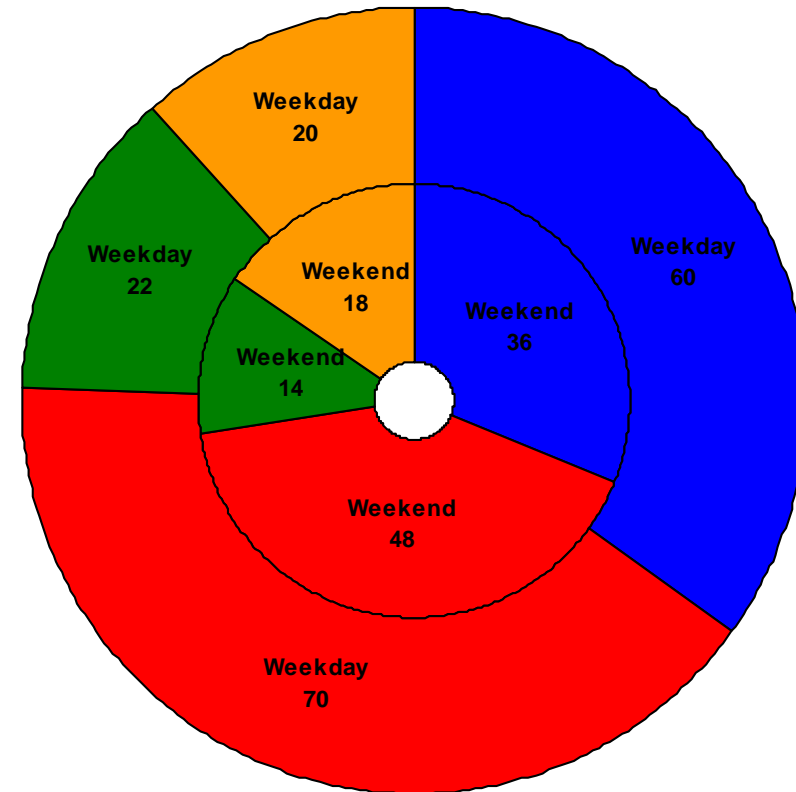
- Weekday pull-out: 70 cars
- Weekend pull-out: 48 cars
- **Monthly Mileage: 570,736 miles**

### Green Line – Fleet Size 28 cars

- Weekday pull-out: 22 cars
- Weekend pull-out: 14 cars
- **Monthly Mileage: 220,425 miles**

### Gold Line – Fleet Size 34 cars

- Weekday pull-out: 20 cars
- Weekend pull-out: 18 cars
- **Monthly Mileage: 160,928 miles**

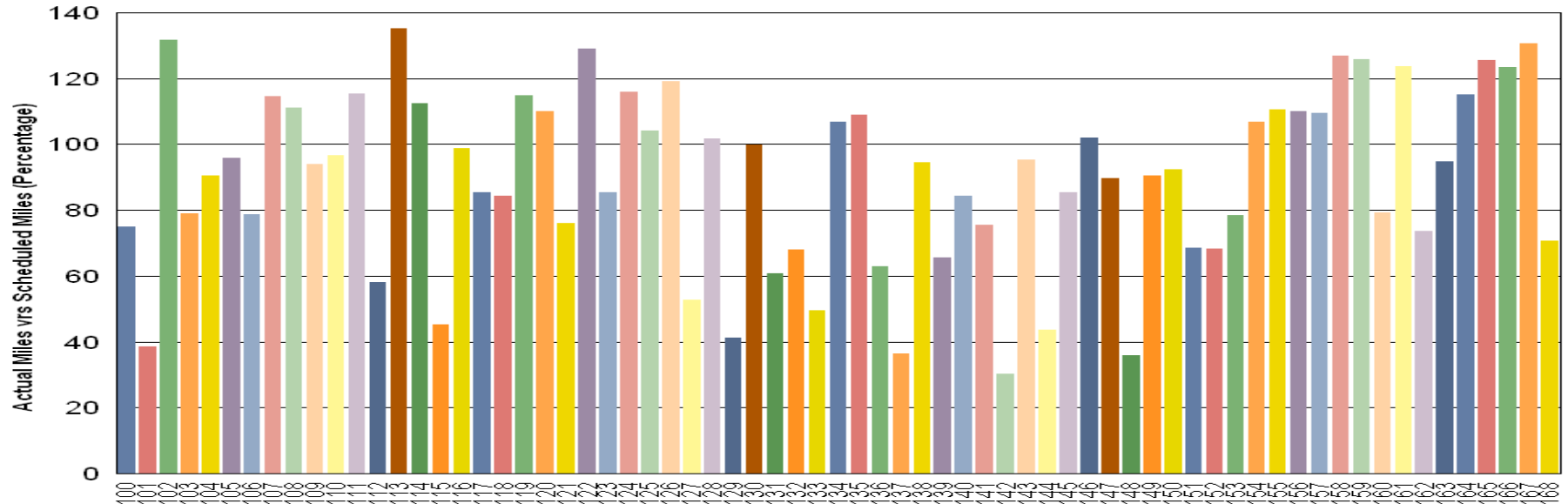


■ Blue Line   ■ Red Line   ■ Green Line   ■ Gold Line

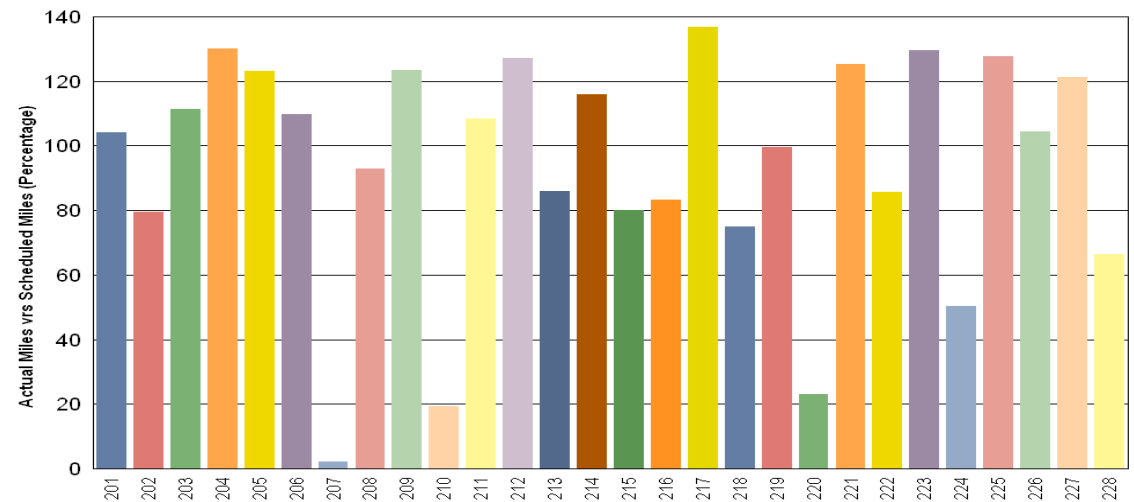
# VEHICLE UTILIZATION

## January 2009

Blue Line



Green Line



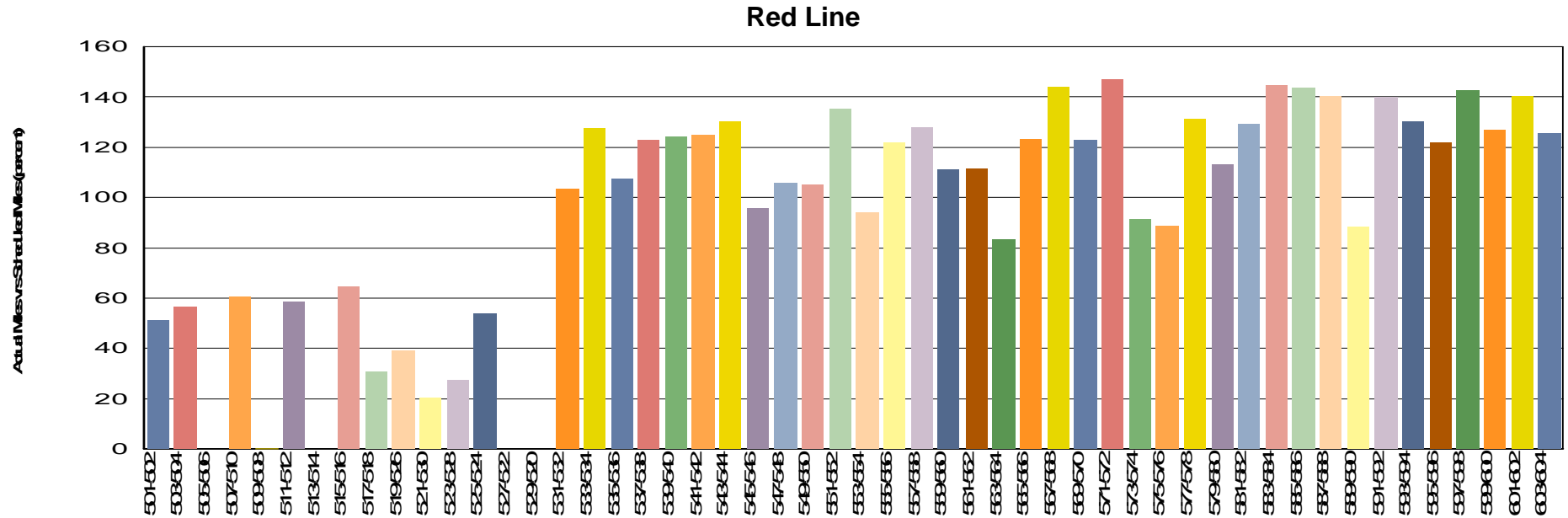
Blue Line - Car 142 was involved in mainline entanglement.

Green Line - Car 207 has numerous EMI faults.

Percentage includes an average 4% mileage deduction for Yard mileage and Vehicle Testing.

# VEHICLE UTILIZATION

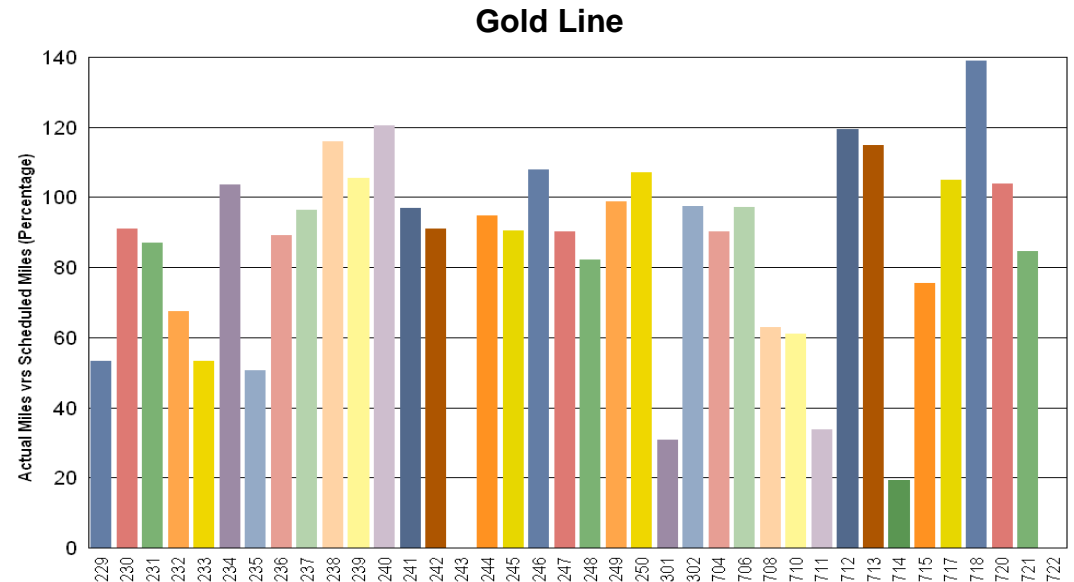
## January 2009



**Red Line** - The original 30 Base Buy cars are not being used to their fullest potential so the remaining Option Buy cars are forced to pick up the slack.

**Gold Line** - Car 243 is in Sacramento having its fire damage repaired and AnsaldoBreda cars # 722 were just accepted recently.

Percentage includes an average 4% mileage deduction for Yard mileage and Vehicle Testing



# Mean Miles Between Failures (Major) January 2009

## Miles Between Major Failures

**Blue Line:** 25,433 miles ( 16 Major Failures )

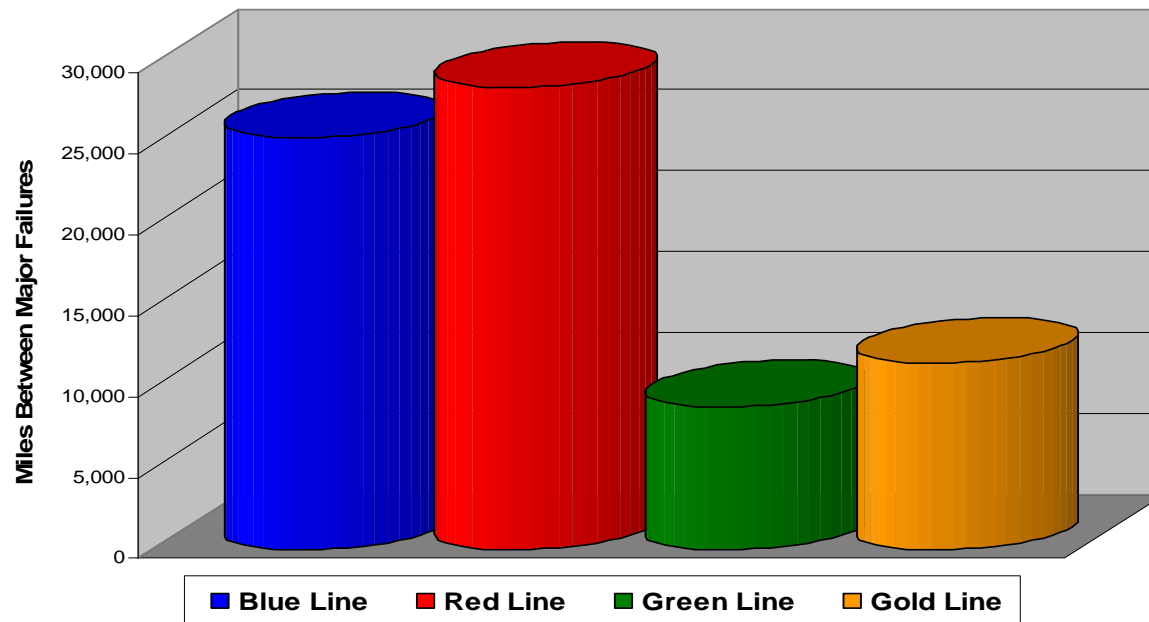
**Red Line:** 28,537 miles ( 20 Major Failures )

**Green Line:** 8,817 miles ( 25 Major Failures )

**Gold Line:** 11,495 miles ( 14 Major Failures )

**Siemens P2000** 20,745 miles (5 Major Failures)

**AnsaldoBreda P2550** 6,355 miles (9 Major Failures)



**Major Failure:** When a train does not complete its scheduled run or is more than 5 minutes late of its scheduled arrival time.



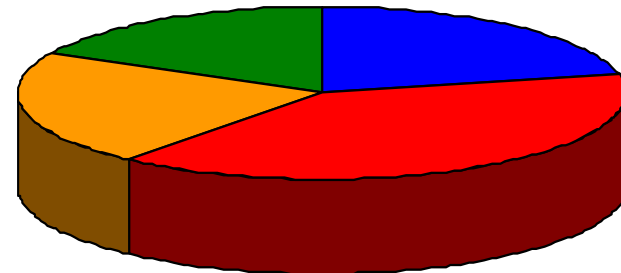
# Repeat Failures (Major) January 2009

Blue Line: 5 Repeat Failures

Red Line: 9 Repeat Failures

Green Line: 5 Repeat Failures

Gold Line: 4 Repeat Failures



■ Blue Line ■ Red Line ■ Green Line ■ Gold Line

Repeater Car Details - January 2009

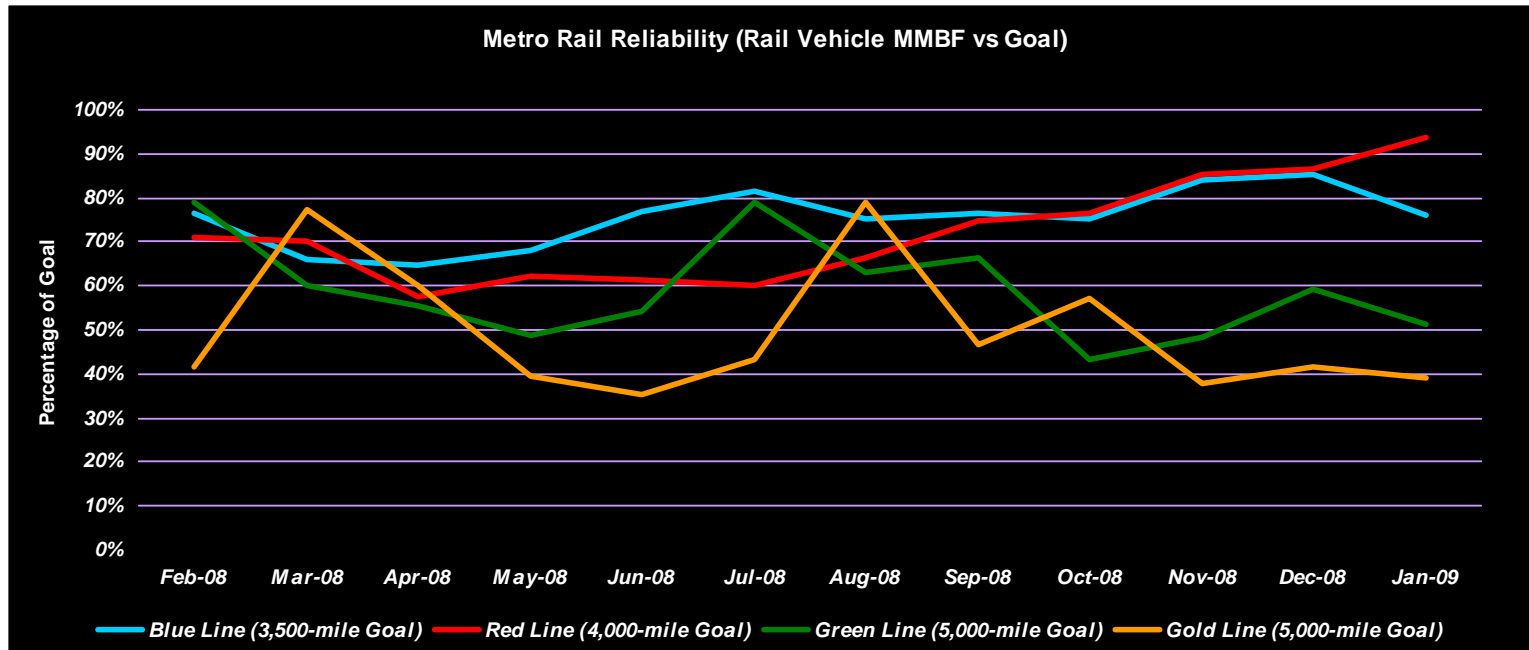
System	Blue Line		Red Line		Green Line		Gold Line	
	Car #	No. of Repeats	Car #	No. of Repeats	Car #	No. of Repeats	Car #	No. of Repeats
ATP	165	3						
Doors			501	2	212	2		
Friction Brakes							244 710	2 2
Propulsion/Dynamic Brake	119	2	518 521	2 5	228	3		
TOTALS	5		9		5		4	

*Repeat Failure: When a train car has two or more major repeat problems/failures.*

# Metro Rail Reliability

## January 2009

	Feb-08	Mar-08	Apr-08	May-08	Jun-08	Jul-08	Aug-08	Sep-08	Oct-08	Nov-08	Dec-08	Jan-09
Blue Line Rail Vehicle Incidents	143	176	178	173	149	148	156	151	161	131	138	153
Blue Line Monthly Mileage	382,656	406,275	401,881	410,888	400,058	421,632	411,301	403,361	424,466	385,704	412,565	406,932
Blue Line MMBF	2,676	2,308	2,258	2,375	2,685	2,849	2,637	2,671	2,636	2,944	2,990	2,660
Blue Line (3,500-mile Goal)	76%	66%	65%	68%	77%	81%	75%	76%	75%	84%	85%	76%
Red Line Rail Vehicle Incidents	175	192	228	212	209	221	199	182	186	159	163	152
Red Line Monthly Mileage	496,907	539,274	524,452	528,698	513,141	532,394	529,268	544,302	569,212	542,756	563,404	570,736
Red/Purple Line MMBF	2,839	2,809	2,300	2,494	2,455	2,409	2,660	2,991	3,060	3,414	3,456	3,755
Red Line (4,000-mile Goal)	71%	70%	58%	62%	61%	60%	66%	75%	77%	85%	86%	94%
Green Line Rail Vehicle Incidents	53	73	79	90	78	55	68	68	110	90	78	86
Green Line Monthly Mileage	209,648	219,499	218,303	219,499	211,045	217,035	214,560	226,339	237,068	217,632	231,429	220,425
Green Line MMBF	3,956	3,007	2,763	2,439	2,706	3,946	3,155	3,329	2,155	2,418	2,967	2,563
Green Line (5,000-mile Goal)	79%	60%	55%	49%	54%	79%	63%	67%	43%	48%	59%	51%
Gold Line Rail Vehicle Incidents	69	39	49	76	83	70	38	63	54	82	76	82
Gold Line Monthly Mileage	143,185	151,044	147,591	149,693	146,598	152,075	150,466	147,380	154,222	155,276	158,405	160,928
Gold Line MMBF	2,075	3,873	3,012	1,970	1,766	2,173	3,960	2,339	2,856	1,894	2,084	1,963
Gold Line (5,000-mile Goal)	42%	77%	60%	39%	35%	43%	79%	47%	57%	38%	42%	39%

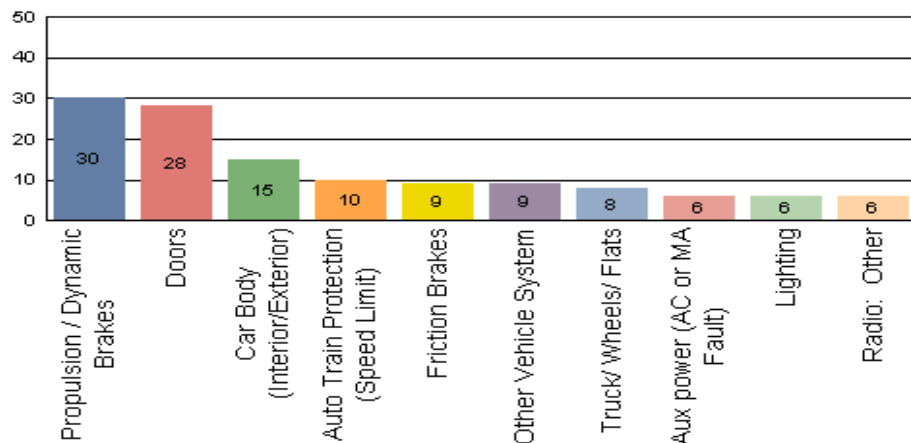


# Incident Problems

## January 2009

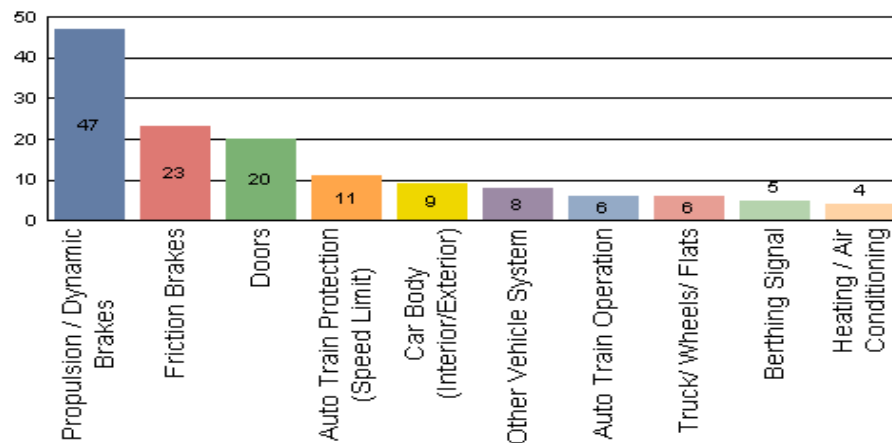
### Blue Line

Count of the Top 10 Incident Problems



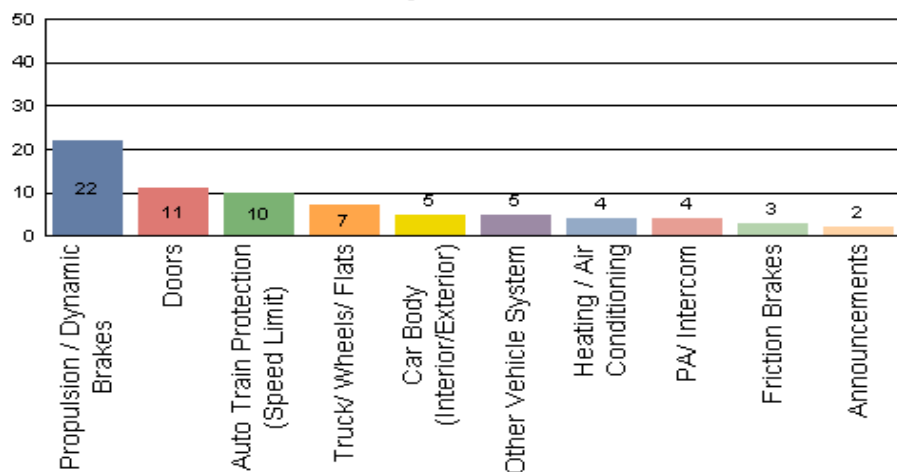
### Red Line

Count of the Top 10 Incident Problems



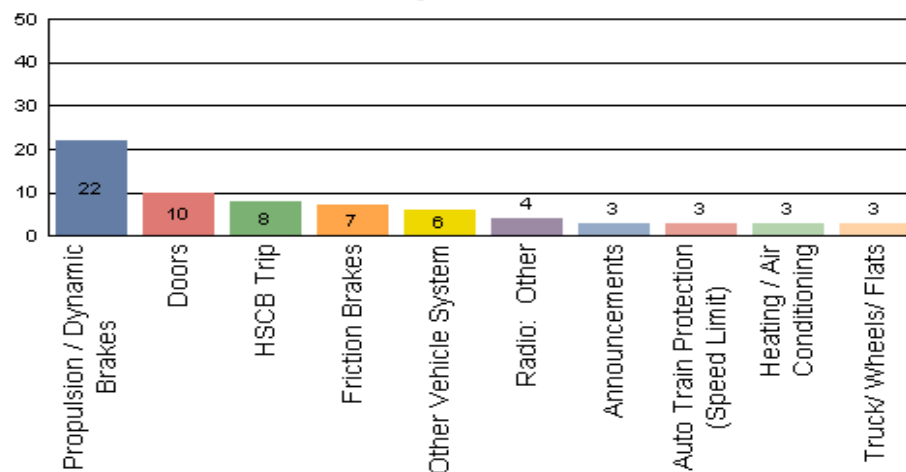
### Green Line

Count of the Top 10 Incident Problems



### Gold Line

Count of the Top 10 Incident Problems



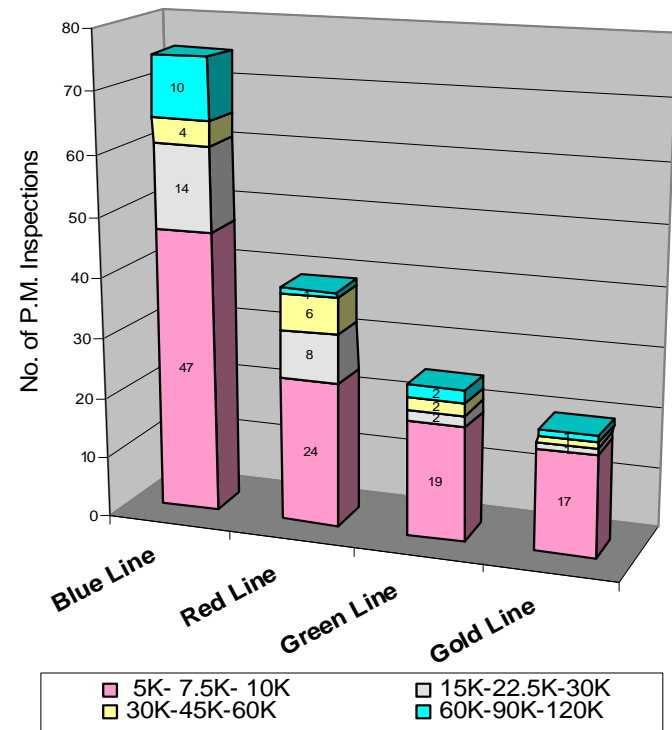
# Preventative Maintenance Compliance

## January 2009

Averages	Feb-08	Mar-08	Apr-08	May-08	Jun-08	Jul-08	Aug-08	Sep-08	Oct-08	Nov-08	Dec-08	Jan-09
Blue Line	100%	100%	100%	100%	97%	100%	100%	96%	100%	100%	100%	100%
Red Line	100%	100%	100%	100%	80%	100%	100%	100%	100%	100%	100%	100%
Green Line	100%	100%	100%	100%	100%	100%	100%	100%	100%	100%	100%	100%
Gold Line	100%	100%	100%	100%	100%	100%	100%	100%	100%	100%	100%	100%

### January 2009 Preventative Maintenance Inspections

No. of P.M. Inspections	5K-7.5K-10K	15K-22.5K-30K	30K-45K-60K	60K-90K-120K	Totals	Percent Compliance
Blue Line	47	14	4	10	75	100%
Red Line	24	8	6	1	39	100%
Green Line	19	2	2	2	25	100%
Gold Line	17	1	1	1	20	100%
<b>Totals:</b>	<b>107</b>	<b>25</b>	<b>13</b>	<b>14</b>	<b>159</b>	<b>100%</b>



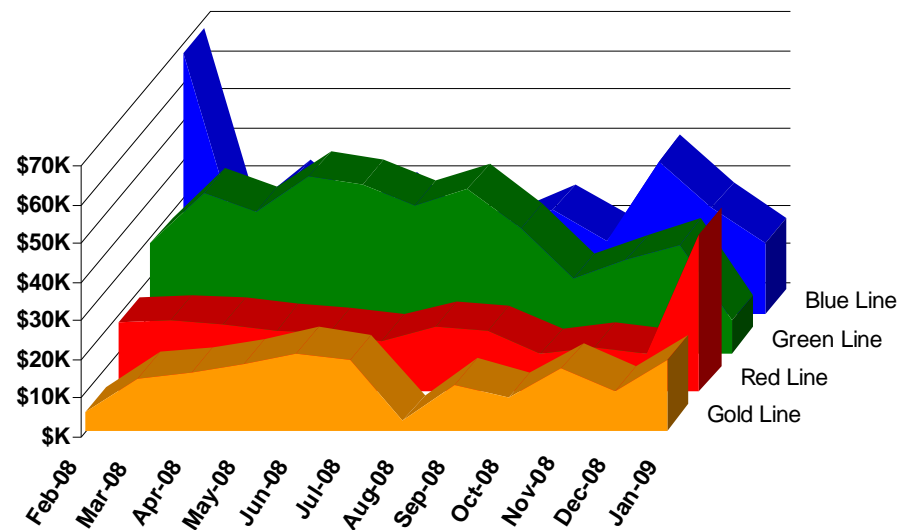
# Vandalism & Graffiti Report

## January 2009

### Graffiti Costs - January 2009

	Feb-08	Mar-08	Apr-08	May-08	Jun-08	Jul-08	Aug-08	Sep-08	Oct-08	Nov-08	Dec-08	Jan-09	Year-to-Date
Blue Line	\$68K	\$22K	\$34K	\$22K	\$30K	\$19K	\$21K	\$27K	\$19K	\$40K	\$28K	\$18K	\$472K
Red Line	\$18K	\$18K	\$17K	\$16K	\$15K	\$13K	\$17K	\$16K	\$10K	\$11K	\$10K	\$41K	\$202K
Green Line	\$29K	\$41K	\$37K	\$46K	\$43K	\$38K	\$42K	\$32K	\$19K	\$24K	\$28K	\$9K	\$388K
Gold Line	\$5K	\$14K	\$15K	\$17K	\$20K	\$18K	\$2K	\$12K	\$8K	\$16K	\$10K	\$18K	\$155K
Totals:	\$119K	\$95K	\$103K	\$101K	\$109K	\$88K	\$83K	\$87K	\$56K	\$91K	\$76K	\$86K	\$1,094K

January 2009 Vandalism & Graffiti - All Rail				
	Qty	Labor	Materials	Totals
Windows replaced	20	\$3,717	\$3,424	\$ 7,141
Vandal Shields	418	\$8,285	\$6,775	\$ 15,060
Vandal Shields - Other	27	\$504	\$181	\$ 685
Seats Cleaned	8,735	\$20,540	\$0	\$ 20,540
Seats Replaced	100	\$3,150	\$4,130	\$ 7,280
Ext/Int Repairs	1,069	\$27,767	\$6,373	\$ 34,140
Exterior Graffiti Clean	1	\$1,008	\$149	\$1,157
Totals for December 2008		\$65,034	\$20,884	\$ 85,918



# Vandalism & Graffiti Pictures

## January 2009

A



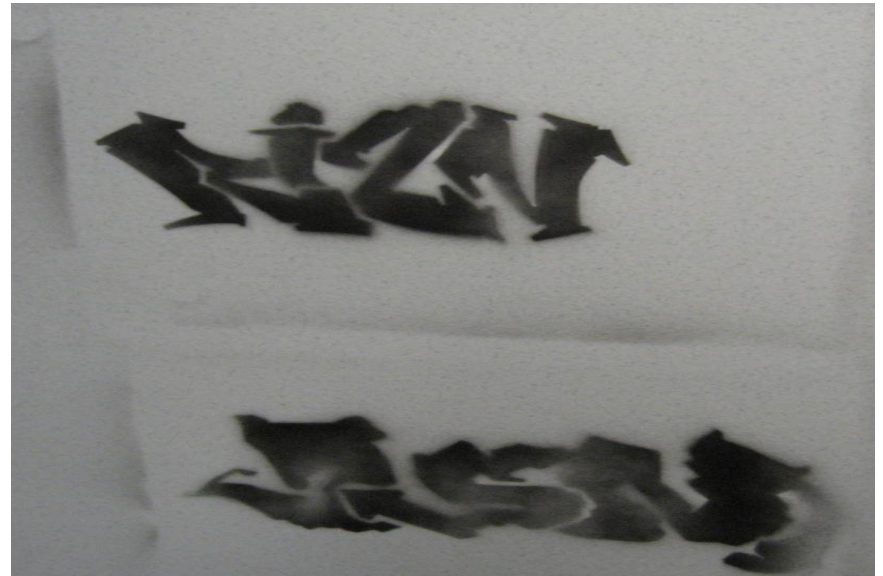
B



C



D



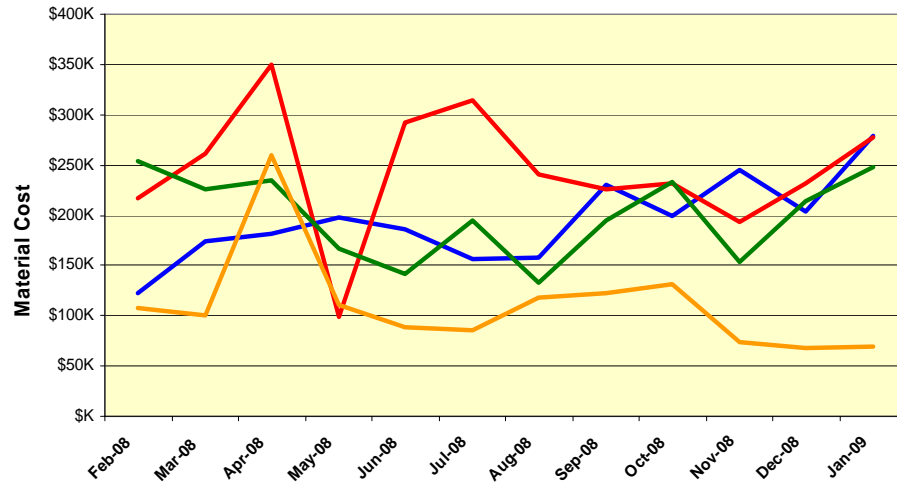


# Material and Labor Costs

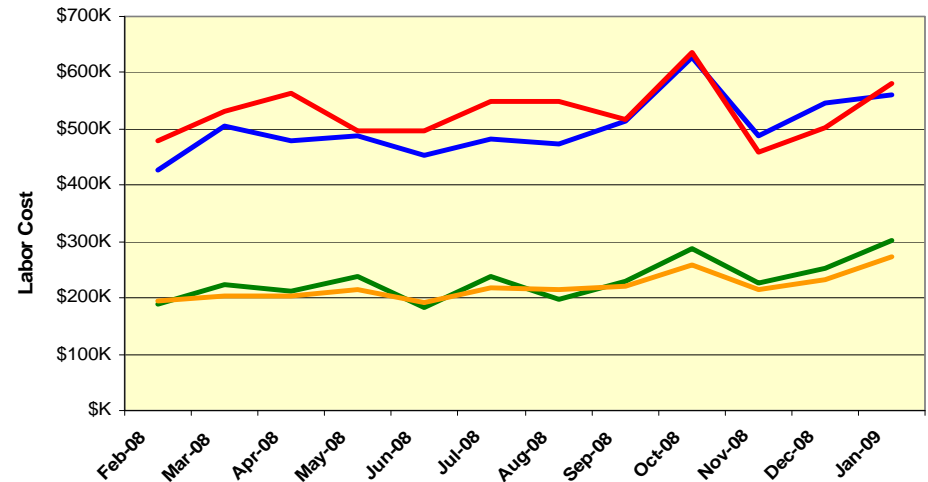
## January 2009

<b>MATERIALS</b>	<b>Feb-08</b>	<b>Mar-08</b>	<b>Apr-08</b>	<b>May-08</b>	<b>Jun-08</b>	<b>Jul-08</b>	<b>Aug-08</b>	<b>Sep-08</b>	<b>Oct-08</b>	<b>Nov-08</b>	<b>Dec-08</b>	<b>Jan-09</b>	<b>Totals</b>
<b>Blue Line</b>	<b>\$123K</b>	<b>\$174K</b>	<b>\$181K</b>	<b>\$197K</b>	<b>\$185K</b>	<b>\$156K</b>	<b>\$157K</b>	<b>\$230K</b>	<b>\$199K</b>	<b>\$244K</b>	<b>\$204K</b>	<b>\$279K</b>	<b>\$2330K</b>
<b>Red Line</b>	<b>\$217K</b>	<b>\$261K</b>	<b>\$349K</b>	<b>\$99K</b>	<b>\$292K</b>	<b>\$314K</b>	<b>\$240K</b>	<b>\$225K</b>	<b>\$232K</b>	<b>\$193K</b>	<b>\$232K</b>	<b>\$277K</b>	<b>\$2932K</b>
<b>Green Line</b>	<b>\$254K</b>	<b>\$225K</b>	<b>\$235K</b>	<b>\$166K</b>	<b>\$142K</b>	<b>\$194K</b>	<b>\$133K</b>	<b>\$195K</b>	<b>\$233K</b>	<b>\$153K</b>	<b>\$214K</b>	<b>\$248K</b>	<b>\$2393K</b>
<b>Gold Line</b>	<b>\$107K</b>	<b>\$101K</b>	<b>\$260K</b>	<b>\$110K</b>	<b>\$88K</b>	<b>\$85K</b>	<b>\$118K</b>	<b>\$123K</b>	<b>\$132K</b>	<b>\$74K</b>	<b>\$68K</b>	<b>\$69K</b>	<b>\$1335K</b>
<b>Totals</b>	<b>\$701K</b>	<b>\$761K</b>	<b>\$1,025K</b>	<b>\$572K</b>	<b>\$707K</b>	<b>\$750K</b>	<b>\$649K</b>	<b>\$774K</b>	<b>\$795K</b>	<b>\$665K</b>	<b>\$717K</b>	<b>\$873K</b>	<b>\$8,989K</b>

**Material Costs**



**Labor Costs**

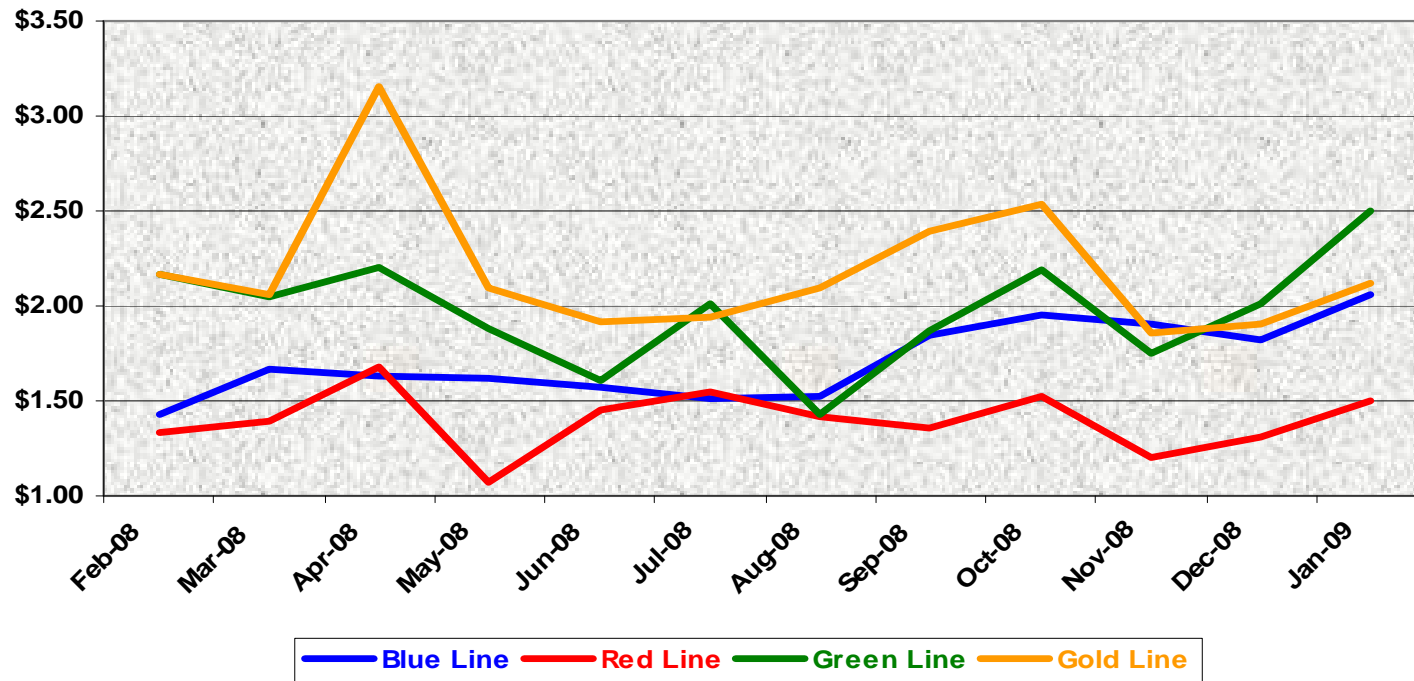


<b>LABOR</b>	<b>Feb-08</b>	<b>Mar-08</b>	<b>Apr-08</b>	<b>May-08</b>	<b>Jun-08</b>	<b>Jul-08</b>	<b>Aug-08</b>	<b>Sep-08</b>	<b>Oct-08</b>	<b>Nov-08</b>	<b>Dec-08</b>	<b>Jan-09</b>
<b>Blue Line</b>	<b>\$426K</b>	<b>\$505K</b>	<b>\$479K</b>	<b>\$487K</b>	<b>\$454K</b>	<b>\$483K</b>	<b>\$473K</b>	<b>\$513K</b>	<b>\$628K</b>	<b>\$489K</b>	<b>\$547K</b>	<b>\$560K</b>
<b>Red Line</b>	<b>\$481K</b>	<b>\$530K</b>	<b>\$563K</b>	<b>\$498K</b>	<b>\$496K</b>	<b>\$549K</b>	<b>\$548K</b>	<b>\$516K</b>	<b>\$637K</b>	<b>\$460K</b>	<b>\$503K</b>	<b>\$579K</b>
<b>Green Line</b>	<b>\$190K</b>	<b>\$225K</b>	<b>\$211K</b>	<b>\$239K</b>	<b>\$184K</b>	<b>\$237K</b>	<b>\$196K</b>	<b>\$229K</b>	<b>\$287K</b>	<b>\$227K</b>	<b>\$252K</b>	<b>\$302K</b>
<b>Gold Line</b>	<b>\$196K</b>	<b>\$202K</b>	<b>\$202K</b>	<b>\$216K</b>	<b>\$192K</b>	<b>\$217K</b>	<b>\$214K</b>	<b>\$220K</b>	<b>\$260K</b>	<b>\$214K</b>	<b>\$233K</b>	<b>\$272K</b>
<b>Totals</b>	<b>\$1,293K</b>	<b>\$1,462K</b>	<b>\$1,454K</b>	<b>\$1,440K</b>	<b>\$1,326K</b>	<b>\$1,486K</b>	<b>\$1,431K</b>	<b>\$1,479K</b>	<b>\$1,812K</b>	<b>\$1,390K</b>	<b>\$1,535K</b>	<b>\$1,713K</b>

# Cost Per Mile

## January 2009

Cost per mile:	Feb-08	Mar-08	Apr-08	May-08	Jun-08	Jul-08	Aug-08	Sep-08	Oct-08	Nov-08	Dec-08	Jan-09	Average
Blue Line	\$1.43	\$1.67	\$1.63	\$1.62	\$1.58	\$1.51	\$1.52	\$1.84	\$1.95	\$1.90	\$1.82	\$2.06	\$1.63
Red Line	\$1.33	\$1.39	\$1.68	\$1.07	\$1.45	\$1.55	\$1.42	\$1.36	\$1.53	\$1.20	\$1.31	\$1.50	\$1.40
Green Line	\$2.17	\$2.05	\$2.20	\$1.89	\$1.61	\$2.01	\$1.43	\$1.87	\$2.19	\$1.75	\$2.01	\$2.50	\$1.85
Gold Line	\$2.16	\$2.05	\$3.16	\$2.10	\$1.91	\$1.94	\$2.10	\$2.40	\$2.54	\$1.86	\$1.90	\$2.12	\$2.21



No facility costs are included



# Rail Fleet Services Instruction

## January 2009

### Training classes completed during the month of January 2009

January 2009

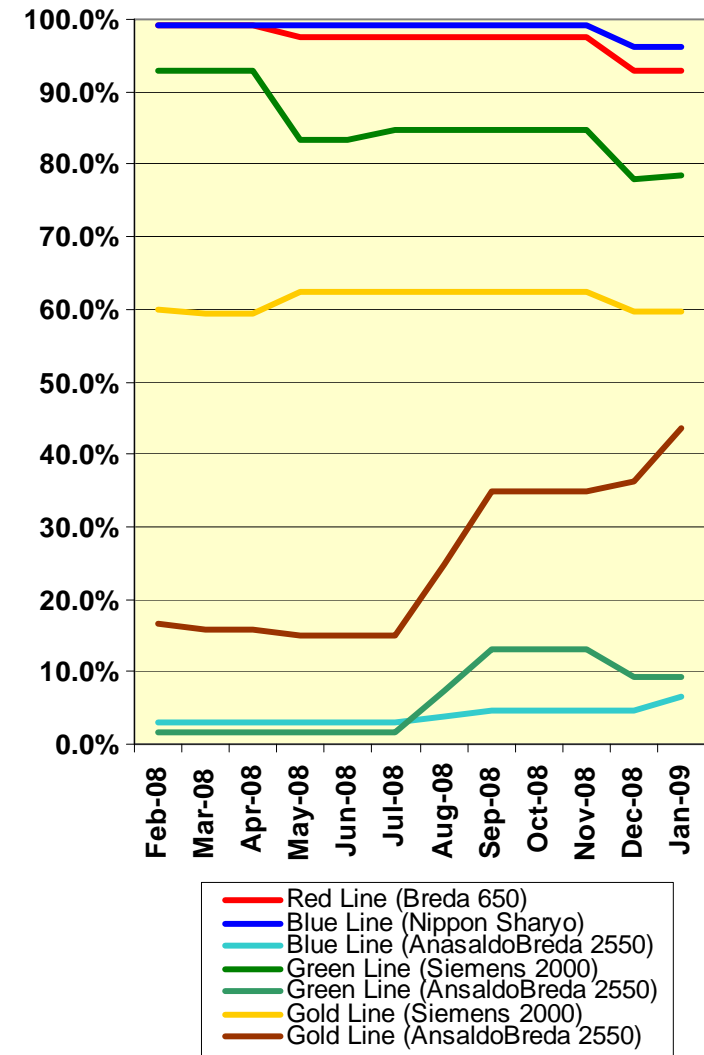
Description	Status	Start	End	Course Hours	Student Count	Training Hours
<b><u>Blue Line Training (Nippon Sharvo P865/P2020 LRV):</u></b>						
Back Safety (Video)	Complete			2		0
MOP SEXUAL HARASSMENT PREVENTION AND TITLE VII	Complete	1/29/2009	1/29/2009	2	1	2
FORKLIFT CERTIFICATION	Complete	1/9/2009	1/29/2009	2	4	8
Fire Safety (Video)	Complete	1/27/2009	1/29/2009	2	2	4
DIRECT DEPOSIT SELF SERVICE TRAINING	Complete	1/8/2009	1/14/2009	0.75	3	2.25
Confined Space Entry (Video)	Complete	1/20/2009	1/23/2009	2	6	12
POWERPOINT 2003 - BEGINNER	Complete	1/20/2009	1/20/2009	6	1	6
RFS ANSALDOBREDA 2550 VENDOR	Complete	1/12/2009	1/30/2009	128	3	384
MANAGERIAL AND SUPERVISORY TRAINING	Complete	1/22/2009	1/23/2009	12	1	12
OSHA 300 LOG FOR RAIL	Complete	1/15/2009	1/21/2009	3	3	9
Electrical Safety (Video)	Complete	1/14/2009	1/19/2009	2	2	4
BLOODBORNE PATHOGENS	Complete	1/14/2009	1/24/2009	2	2	4
NEW SERIVCE ATTENDENT TRAINING	Complete	1/5/2009	1/14/2009	80	1	80
RFS SIEMENS 2000 CARBODY	Complete	1/29/2009	1/29/2009	8	3	24
RFS SIEMENS 2000 VEHICLE SYSTEMS	Complete	1/22/2009	1/28/2009	40	3	120
TRANSIT TERRORISM AWARENESS TRAINING	Complete	1/14/2009	1/14/2009	1	4	4
<b>Total Blue Line Training (Hours):</b>						<b>675.25</b>
<b><u>Red Line Training (Breda A650 HRV):</u></b>						
TOOLBOX ELECTRICAL HAZARDS (901)	Complete	1/21/2009	1/21/2009	0.25	82	20.5
ANGER MANAGEMENT	Complete	1/21/2009	1/21/2009	3	1	3
OSHA 300 LOG FOR RAIL	Complete	1/15/2009	1/15/2009	3	2	6
ADULT CPR/AED	Complete	1/13/2009	1/29/2009	4.75	2	9.5
WORD 2003 - BEGINNER	Complete	1/23/2009	1/23/2009	6	1	6
MOP SEXUAL HARASSMENT PREVENTION AND TITLE VII	Complete	1/13/2009	1/20/2009	2	2	4
FIRST AID AND PREPAREDNESS	Complete	1/13/2009	1/13/2009	2.75	1	2.75
INCIDENT COMMAND SYSTEM (ICS - 100)	Complete	1/15/2009	1/15/2009	2	1	2
INCIDENT COMMAND SYSTEM (ICS - 200)	Complete	1/22/2009	1/22/2009	3	1	3
<b>Total Red Line Training (Hours):</b>						<b>56.75</b>
<b><u>Green Line Training (Siemens P2000 LRVs):</u></b>						
OSHA 300 LOG FOR RAIL	Complete	1/15/2009	1/21/2009	3	3	9
FORKLIFT CERTIFICATION	Complete	1/30/2009	1/30/2009	2	1	2
INCIDENT COMMAND SYSTEM (ICS - 100)	Complete	1/16/2009	1/16/2009	2	2	4
RFS SIEMENS 2000 CARBODY	Complete	1/29/2009	1/29/2009	8	2	16
RFS SIEMENS 2000 VEHICLE SYSTEMS	Complete	1/21/2009	1/28/2009	40	2	80
ETD PC 101 ESSENTIAL CONCEPTS	Complete	1/29/2009	1/29/2009	3	1	3
MANAGERIAL AND SUPERVISORY TRAINING	Complete	1/22/2009	1/23/2009	12	1	12
MOP COACHING AND COUNSELING	Complete	1/27/2009	1/27/2009	2	1	2
<b>Total Green Line Training (Hours):</b>						<b>128</b>
<b><u>Gold Line Training (P2550 &amp; P2000 LRVs):</u></b>						
RFS ANSALDOBREDA 2550 PROPULSION	Complete	1/23/2009	1/30/2009	56	4	224
RFS ANSALDOBREDA 2550 APSILVPS/BATTERY	Complete	1/21/2009	1/22/2009	16	4	64
RFS ANSALDOBREDA 2550 A.T.P. & T.W.C.	Complete	1/15/2009	1/20/2009	32	4	128
RFS ANSALDOBREDA 2550 VEHICLE SYSTEMS	Complete	1/12/2009	1/14/2009	24	4	96
WRITING TECHNICAL REPORTS	Complete	1/28/2009	1/28/2009	3	1	3
POWERPOINT 2003 - BEGINNER	Complete	1/20/2009	1/20/2009	6	1	6
OSHA 300 LOG FOR RAIL	Complete	1/15/2009	1/15/2009	3	2	6
MOP SEXUAL HARASSMENT PREVENTION AND TITLE VII	Complete	1/20/2009	1/20/2009	2	1	2

**Total Rail Fleet Services Instruction for the month of January 2009 (Hours): 1,165.0**

#### Core Vehicle Training Completed:

	BLUE	RED	GREEN	GOLD
Percentage of core vehicle training complete:	96.2%	93.0%	78.4%	59.6%
Ansaldobreda 2550 Training Completed:	4.6%	N/A	9.3%	43.5%
Average Specialist Rail Experience Level in Years:	9.8	7.9	7.3	7.5

### Core Training Completed



Variations caused by new hires, employee transfers, & training completed



**Metro**

# Absences vs. Overtime

## January 2009

ABSENCE TYPE and HOURS	3940	3941	3942	3943	3944	Total
AWP-ABSENT W/O PERMISSION	0.00	8.00	0.00	0.00	32.00	40.00
CTO-COMPENSATORY TIME OFF	16.00	181.50	264.00	108.00	116.00	685.50
CVA - CASUAL VACATION	36.00	8.00	660.00	96.00	8.00	808.00
DSL-DISABILITY LEAVE/LONG	0.00	360.00	384.00	32.00	232.00	1,008.00
EFH-EMG. FLOAT HOL.	0.00	8.00	64.00	32.00	24.00	128.00
ETO-EXCUSED TIME OFF	1.98	16.98	11.20	8.50	0.00	38.66
FML-FAMILY CARE LEAVE	0.00	336.00	320.00	144.00	8.00	808.00
HLF-HOLIDAY FLOATING	24.00	288.00	336.00	104.00	64.00	816.00
HNP-HOLIDAY NOT PAID	0.00	16.00	8.00	0.00	0.00	24.00
HOL-HOLIDAY LEGAL	40.00	376.00	396.00	120.00	56.00	988.00
II-INDUSTRIAL INJURY	0.00	176.00	0.00	0.00	8.00	184.00
IS-INVESTIGATIVE SUSPENSION	0.00	0.00	16.00	0.00	0.00	16.00
JUR-JURY DUTY	0.00	8.00	0.00	8.00	0.00	16.00
LC1-LABOR CODE 233	24.00	212.00	271.05	144.00	96.00	747.05
LTI-OCCPIL/LONGTRM INJ LEAVE	0.00	224.00	280.00	0.00	0.00	504.00
OWP-OFF WITH PERMISSION	0.00	0.32	0.00	0.00	0.00	0.32
RTO-REQUESTED TIME OFF-NO PAY	0.00	58.25	16.00	8.00	0.00	82.25
SCK-SICK PAY	88.00	200.00	208.00	96.00	88.00	680.00
SCW-SICK WITHOUT PAY	0.00	48.00	21.92	0.00	16.00	85.92
SUP-TEMPORARY SUPERVISOR	0.00	348.56	188.50	300.00	55.99	893.05
VAC-VACATION	44.00	587.10	72.00	193.00	260.00	1,156.10
<b>Total</b>	<b>273.98</b>	<b>3,460.71</b>	<b>3,516.67</b>	<b>1,393.50</b>	<b>1,063.99</b>	<b>9,708.85</b>
OVERTIME TYPE and HOURS	3940	3941	3942	3943	3944	Total
CTB-COMPENSATORY TIME TO B	0.00	128.60	36.83	109.32	19.33	294.08
OTP-PREM OVERTIME	126.00	986.16	627.50	788.17	495.68	3,023.51
WLO-Worked Lunch Overtime	0.00	4.00	60.00	14.50	5.00	83.50
<b>Total</b>	<b>126.00</b>	<b>1,118.76</b>	<b>724.33</b>	<b>911.99</b>	<b>520.01</b>	<b>3,401.09</b>
UNCOVERED ABSENCES	3940	3941	3942	3943	3944	Total
Absences FTE	1.58	19.97	20.29	8.04	6.14	56.01
OTP FTE	0.73	6.45	4.18	5.26	3.00	19.62
<b>FTE Difference</b>	<b>0.85</b>	<b>13.51</b>	<b>16.11</b>	<b>2.78</b>	<b>3.14</b>	<b>36.39</b>

