



Rail Fleet Services Monthly Report July 2009



Metro

Table of Contents

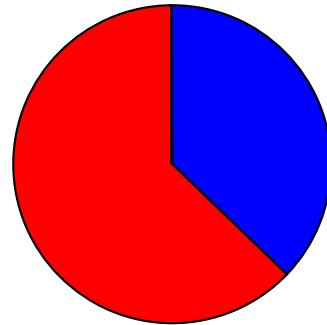
• Safety	
– Industrial Injuries	Page 1
– Rail Vehicle Accidents & Major Incidents	Page 2
• Customer Service	
– Service Delivery – AM/PM Pull-Outs	Page 3
– Vehicle Utilization – Blue Line & Green Line	Page 4
– Vehicle Utilization – Red Line & Gold Line	Page 5
– Mean Miles Between Failures (Major)	Page 6
– Repeaters (Major)	Page 7
• Business Processes	
– Incident Problems	Page 8
– Preventative Maintenance Compliance	Page 9
• Finance	
– Vandalism & Graffiti Costs	Page 10
– Graffiti Pictures	Page 11
– Material & Labor Costs	Page 12
– Cost per mile	Page 13
• Growth	
– Rail Fleet Service Training	Page 14
– Absences vs. Overtime	Page 15

Industrial Injuries – Lost Work Hours

July 2009

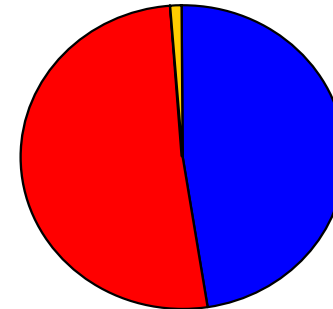
	Aug-08	Sep-08	Oct-08	Nov-08	Dec-08	Jan-09	Feb-09	Mar-09	Apr-09	May-09	Jun-09	Jul-09	Year to Date
Blue Line	240	320	352	328	512	400	488	280	176	160	208	144	3,608
Red Line	392	264	352	328	360	280	264	312	296	344	352	328	3,872
Green Line	0	0	0	0	0	0	0	0	0	0	0	0	0
Gold Line	0	0	0	0	80	8	0	0	0	0	0	0	88
Totals	632	584	704	656	952	688	752	592	472	504	560	472	7,568

July 2009 - Lost Work Hours



■ Blue Line ■ Red Line ■ Green Line ■ Gold Line

Year-to-Date Lost Work Hours



■ Blue Line ■ Red Line ■ Green Line ■ Gold Line

	Employees		July 2009 Lost Work Hours			
	Assigned	Active	Service Attendant	Maint. Specialist	E R S	July 2009 Total Hrs.
Blue Line	106	103	56	88	0	144
Red Line	107	100	320	0	8	328
Green Line	50	50	0	0	0	0
Gold Line	54	52	0	0	0	0
Totals	317	305	376	88	8	472
Total Lost Work Hours for 12-months = 7,568 hours						

Rail Vehicle Accidents & Major Incidents

July 2009

Repair Costs	Aug-08	Sep-08	Oct-08	Nov-08	Dec-08	Jan-09	Feb-09	Mar-09	Apr-09	May-09	Jun-09	Jul-09	Totals
Blue Line	\$7,308	\$55,579	\$1,672	\$1,312	\$20,456	\$79,318	\$3,716	\$9,500	\$111	\$1,480	\$189	\$9,262	\$180,452
Red Line	\$3,127	\$0	\$0		\$0	\$0	\$0	\$0	\$0	\$104,950	\$0	\$0	\$108,077
Green Line	\$0	\$15,758	\$0	\$4,181	\$0	\$0	\$0	\$0	\$0	\$0	\$2,481	\$0	\$22,420
Gold Line	\$3,504	\$0	\$0		\$0	\$0	\$0	\$1,231	\$3,235	\$0	\$189	\$0	\$7,970
Totals	\$13,939	\$71,337	\$1,672	\$5,493	\$20,456	\$79,318	\$3,716	\$10,731	\$3,346	\$106,430	\$2,859	\$9,262	\$318,919

Rail Vehicle Accident Costs - July 2009			
2009	Problem code	Incident Description	Cost
July 2	10-73 - Train vs. Vehicle Blue Line	Train 17 T-236, at Pico/Flower 111-124-160 N/B, Track 1, 10-73	\$2,493
July 2	10-71 - Train vs. Object Blue Line	Train 5 T-66, at Wardlow Station, Track 2 S/B (102A) 113 109, 10-71	\$248
July 9	10-73 - Train vs. Vehicle Blue Line	Train 14 T-265, LRV (157A) 142 103 at Flower/Venice, Track 2 S/B, 1073	\$3,636
July 9	10-72 - Train vs. Pedestrian Blue Line	Train 8 T-201, Cars 160b-150, South of Artesia Station, Track 2, Fatality, 10-72	\$2,213
July 30	10-71 - Train vs. Object Blue Line	Train 11 T-201, Slauson Track 2, Train skirt vs Platform, 10-71	\$672
Blue Line Total Repair Cost			\$9,262
GRAND TOTAL			\$9,262
No accidents for Red Line, Green Line and Gold Line			
(10-71) = Train vs. Object, (10-72) = Train vs. Pedestrian, (10-73) = Train vs. Vehicle (10-74) = Train vs. MTA Vehicle, (10-75) = Derailment			

(The monthly accident charges listed represent only the expenses incurred in that particular month and are not a total repair of an individual accident.)

Service Delivery – AM/PM Pull-Outs July 2009

Cars Available for AM/PM Pull-Outs

Blue Line – Fleet Size 69 cars

- Weekday pull-out: 60 cars
- Weekend pull-out: 36 cars
- **Monthly Mileage: 425,240 miles**

Red Line - Fleet Size 104 cars

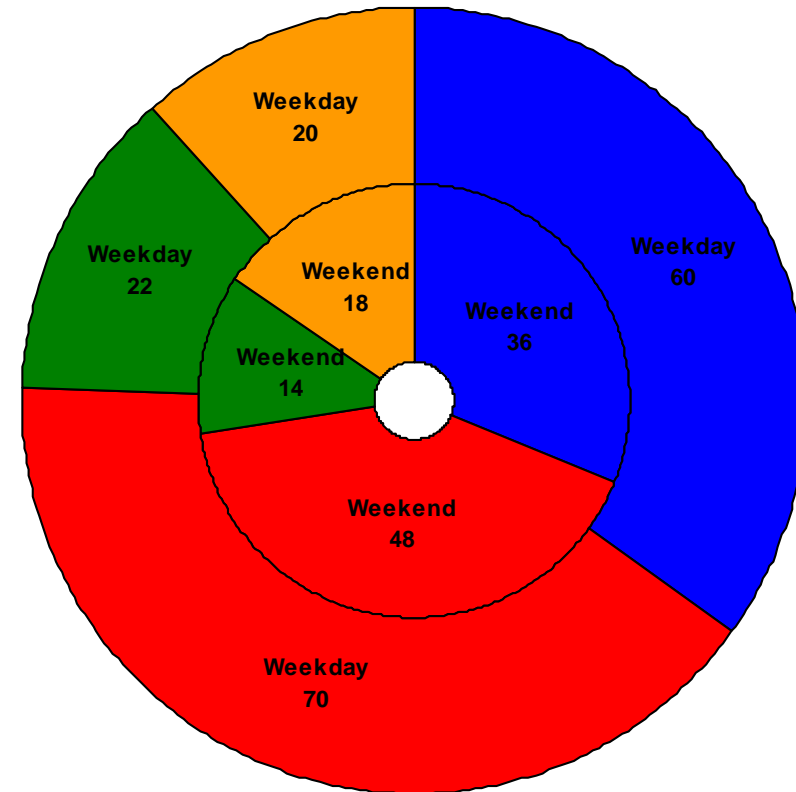
- Weekday pull-out: 70 cars
- Weekend pull-out: 48 cars
- **Monthly Mileage: 548,716 miles**

Green Line – Fleet Size 28 cars

- Weekday pull-out: 22 cars
- Weekend pull-out: 14 cars
- **Monthly Mileage: 223,206 miles**

Gold Line – Fleet Size 48 cars

- Weekday pull-out: 20 cars
- Weekend pull-out: 18 cars
- **Monthly Mileage: 159,225 miles**

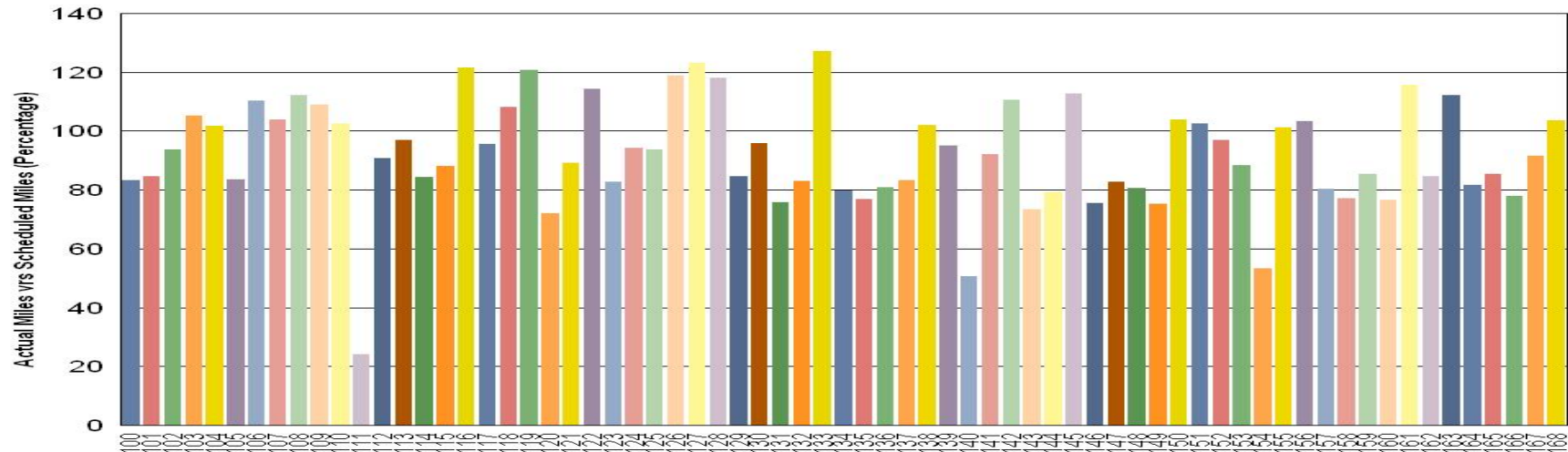


■ Blue Line ■ Red Line ■ Green Line ■ Gold Line

VEHICLE UTILIZATION

July 2009

Metro Blue Line

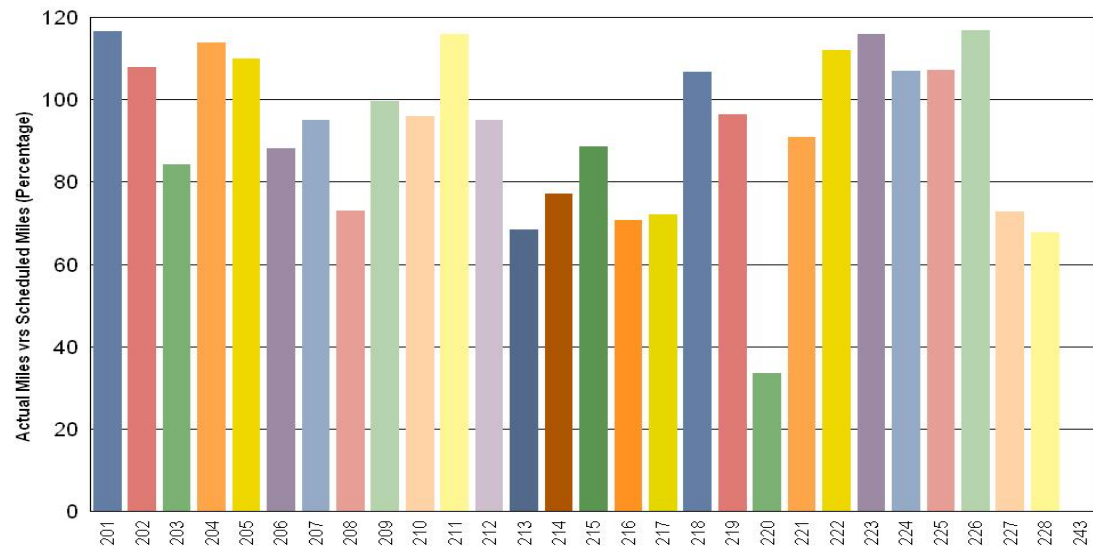


Blue Line Car 111 is undergoing roof repair & incurred 10-73 on 7/2/09.

Green Line Car 220 had prop faults and spin/slides issues. Car 243 is still in Sacramento having its fire damage repaired.

Percentage includes an average 4% mileage deduction for Yard mileage and Vehicle Testing.

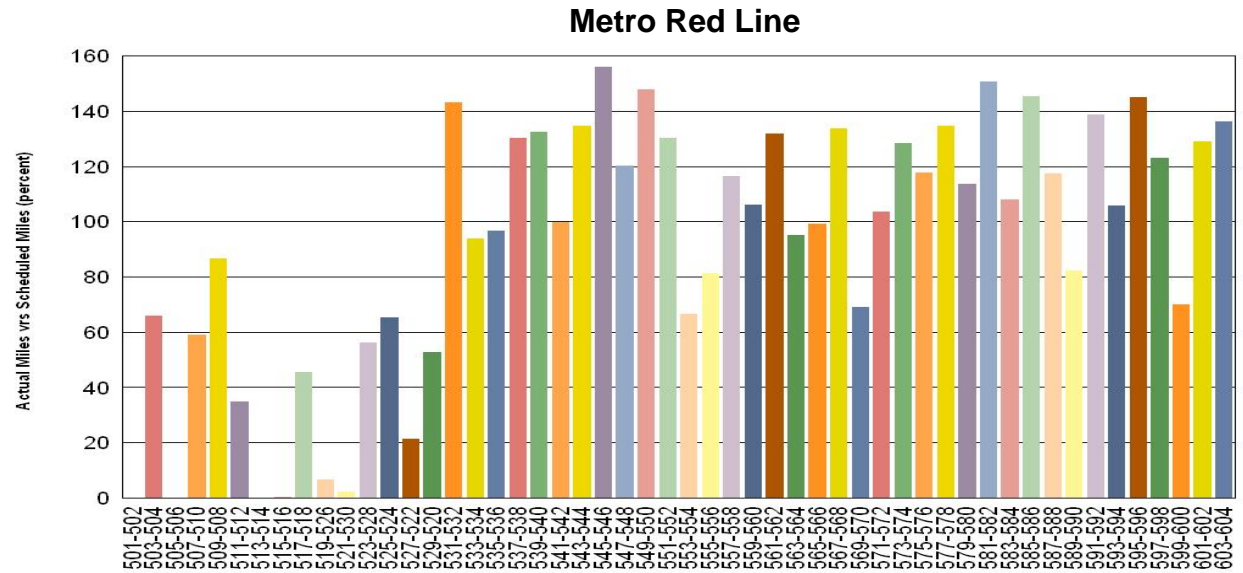
Metro Green Line



VEHICLE UTILIZATION

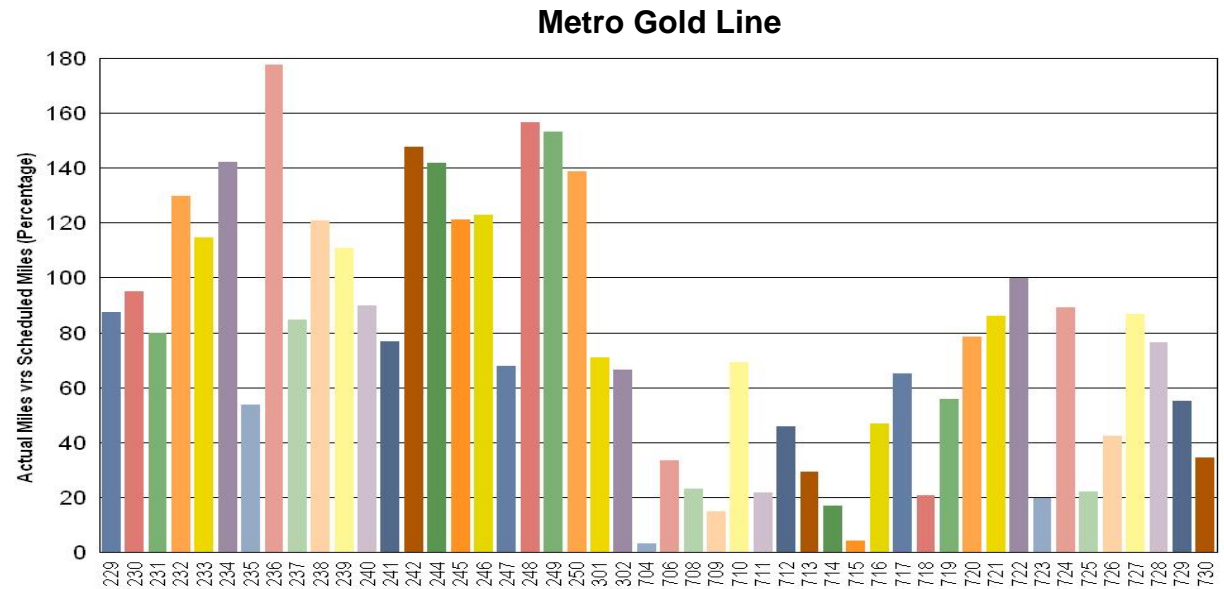
July 2009

Red Line - The original 30 Base Buy cars are not being used to their fullest potential for various reasons such as propulsion, brake and coupling incident problems so the remaining Option Buy cars are forced to pick up the slack.



Gold Line – Cars 704, 706, 708, 709, & 711 sand cars used for Eastside testing.

Percentage includes an average 4% mileage deduction for Yard mileage and Vehicle Testing.



Mean Miles Between Failures (Major) July 2009

Miles Between Major Failures

Blue Line: 9,665 miles (44 Major Failures)

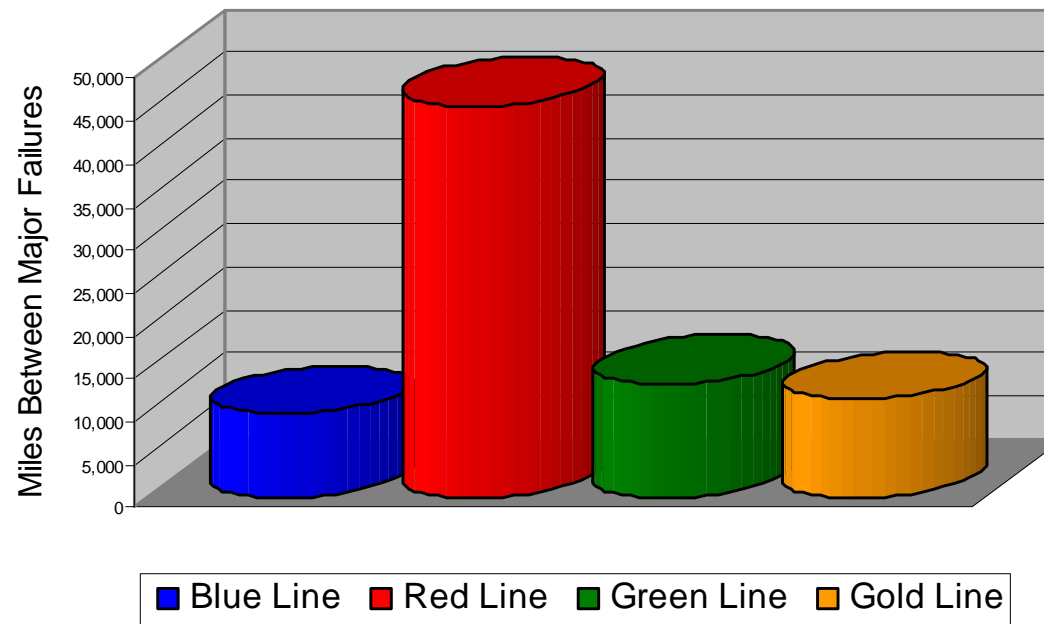
Red Line: 45,726 miles (12 Major Failures)

Green Line: 13,130 miles (17 Major Failures)

Gold Line: 11,373 miles (14 Major Failures)

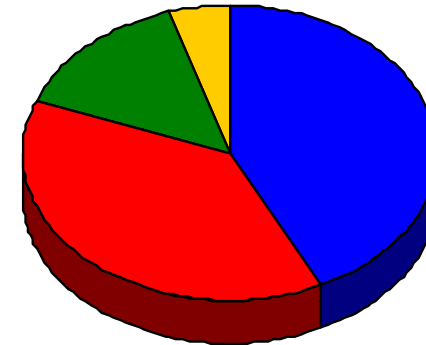
Siemens P2000 35,829 miles (3 Major Failures)

AnsaldoBreda P2550 4,703 miles (11 Major Failures)



Repeat Failures July 2009

Metro Blue Line: 9 Repeat Failures
Metro Red Line: 8 Repeat Failures
Metro Green Line: 3 Repeat Failure
Metro Gold Line: 1 Repeat Failure



■ Blue Line
 ■ Red Line
 ■ Green Line
 ■ Gold Line

Repeater Car Details - July 2009

System	Blue Line		Red Line		Green Line		Gold Line	
	Car #	Repeats	Car #	Repeats	Car #	Repeats	Car #	Repeats
ATP	123	1						
Communication			572	1				
Doors	103	1			216	1		
	122	1						
	152	1						
Friction Brakes	140	1	574	1				
			592	1				
Horn/Gong	158	1						
HVAC			557	2			302	1
Propulsion/Dynamic Brake	126	1	565	1	228	2		
	134	1	577	2				
	162	1						
TOTALS		9		8		3		1

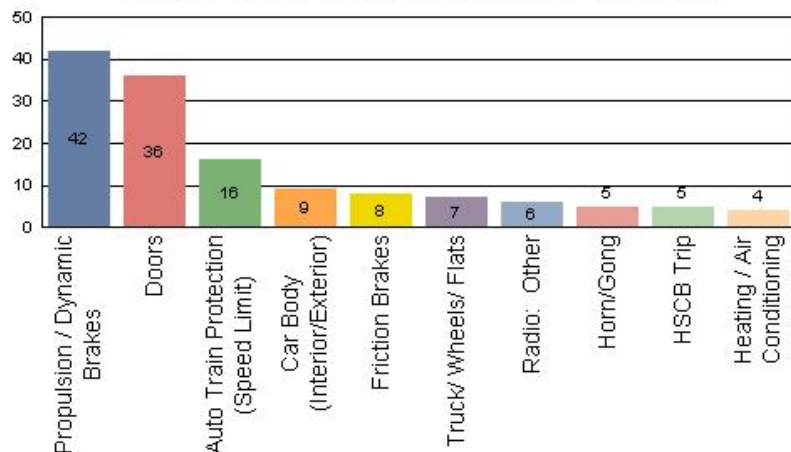
Repeat Failure: When a train car has two or more major repeat problems/failures.

Reported Incidents

July 2009

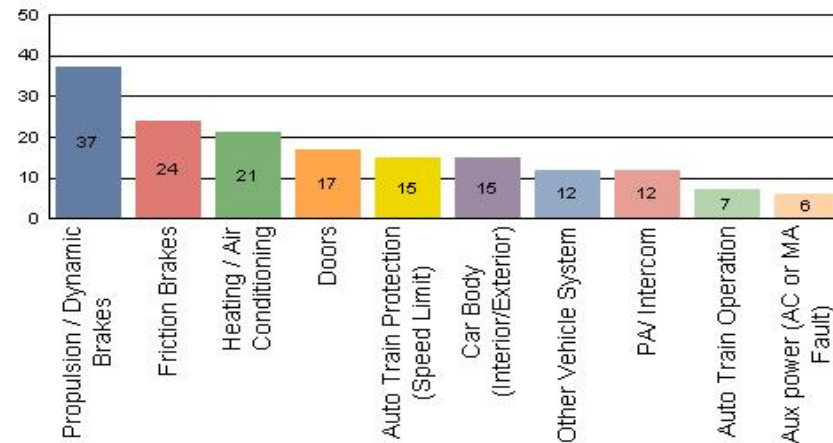
Metro Blue Line

Count of the Top 10 Incident Problems



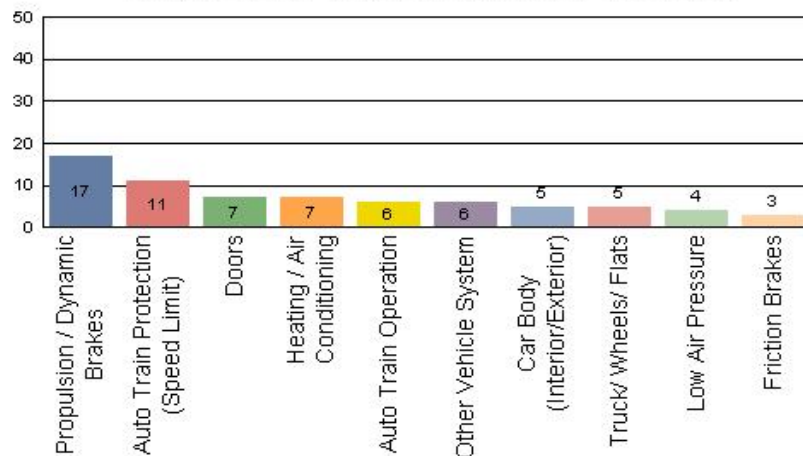
Metro Red Line

Count of the Top 10 Incident Problems



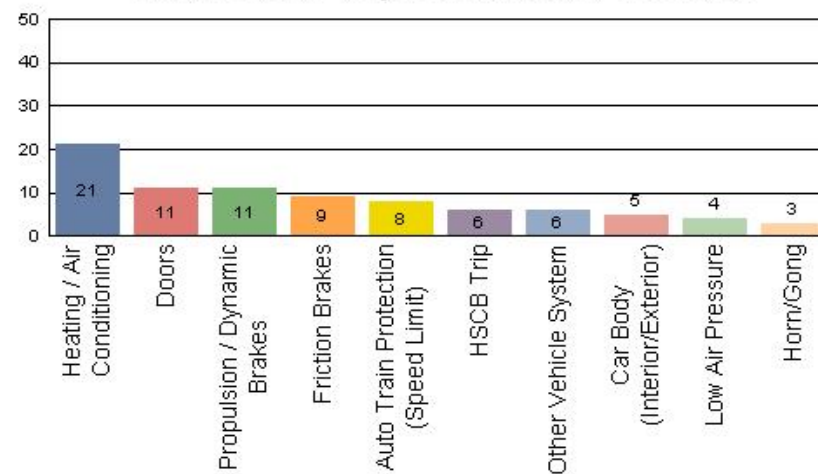
Metro Green Line

Count of the Top 10 Incident Problems



Metro Gold Line

Count of the Top 10 Incident Problems



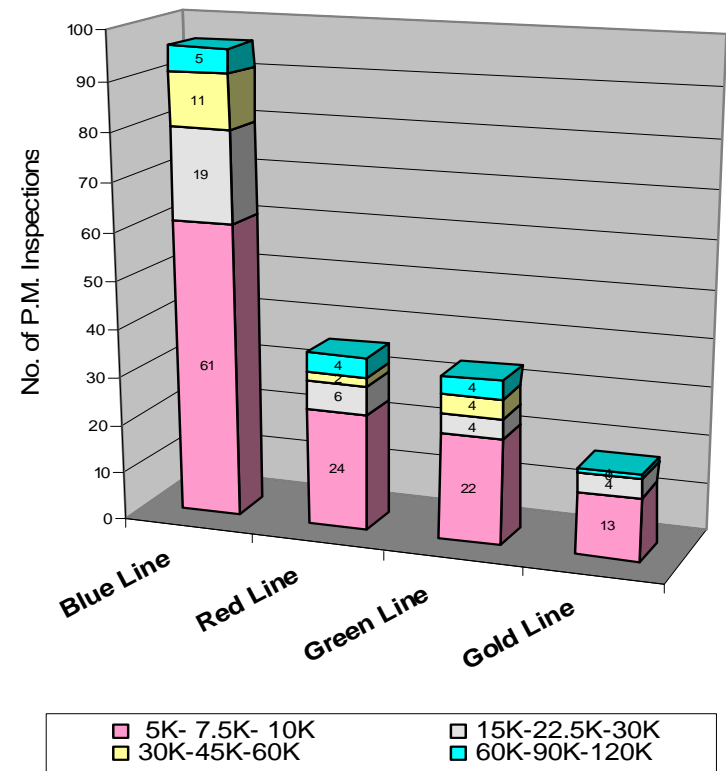
Preventative Maintenance Compliance

July 2009

Averages	Aug-08	Sep-08	Oct-08	Nov-08	Dec-08	Jan-09	Feb-09	Mar-09	Apr-09	May-09	Jun-09	Jul-09
Blue Line	100%	96%	100%	100%	100%	100%	100%	100%	100%	100%	100%	100%
Red Line	100%	100%	100%	100%	100%	100%	100%	100%	100%	100%	100%	94%
Green Line	100%	100%	100%	100%	100%	100%	93%	97%	100%	100%	100%	100%
Gold Line	100%	100%	100%	100%	100%	100%	100%	100%	100%	100%	100%	100%

July 2009 Preventative Maintenance Inspections

No. of P.M. Inspections	5K-7.5K-10K	15K-22.5K-30K	30K-45K-60K	60K-90K-120K	Totals	Percent Compliance
Blue Line	61	19	11	5	96	100%
Red Line	24	6	2	4	36	94%
Green Line	22	4	4	4	34	100%
Gold Line	13	4	0	1	18	100%
Totals:	120	33	17	14	184	

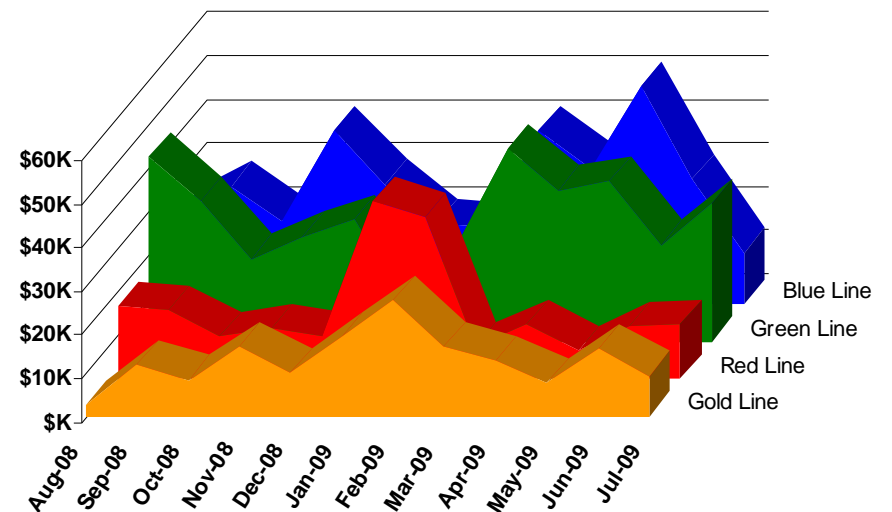


Vandalism & Graffiti Report

July 2009

	Aug-08	Sep-08	Oct-08	Nov-08	Dec-08	Jan-09	Feb-09	Mar-09	Apr-09	May-09	Jun-09	Jul-09	Year-to-Date
Blue Line	\$21K	\$27K	\$19K	\$40K	\$28K	\$18K	\$18K	\$40K	\$31K	\$50K	\$29K	\$12K	\$457K
Red Line	\$17K	\$16K	\$10K	\$11K	\$10K	\$41K	\$37K	\$8K	\$12K	\$7K	\$12K	\$13K	\$192K
Green Line	\$42K	\$32K	\$19K	\$24K	\$28K	\$9K	\$21K	\$44K	\$35K	\$37K	\$22K	\$32K	\$346K
Gold Line	\$2K	\$12K	\$8K	\$16K	\$10K	\$18K	\$27K	\$16K	\$13K	\$8K	\$16K	\$9K	\$154K
Totals:	\$83K	\$87K	\$56K	\$91K	\$76K	\$86K	\$103K	\$108K	\$91K	\$101K	\$79K	\$65K	\$1,026K

July 2009 Vandalism & Graffiti - All Rail				
	Qty	Labor	Materials	Totals
Windows replaced	24	\$1,512	\$3,264	\$ 4,776
Vandal Shields	291	\$7,151	\$4,706	\$ 11,857
Vandal Shields - Other	51	\$803	\$339	\$ 1,142
Seats Cleaned	6,099	\$15,432	\$0	\$ 15,432
Seats Replaced	88	\$2,773	\$4,051	\$ 6,823
Ext/Int Repairs	1,278	\$19,183	\$6,166	\$ 25,348
Exterior Graffiti Clean	3	\$95	\$0	\$ 95
Totals for July 2009		\$46,948	\$18,525	\$ 65,473



Vandalism & Graffiti Pictures

July 2009

A



B



A & B - Metro Blue Line

C



C - Metro Green Line

D



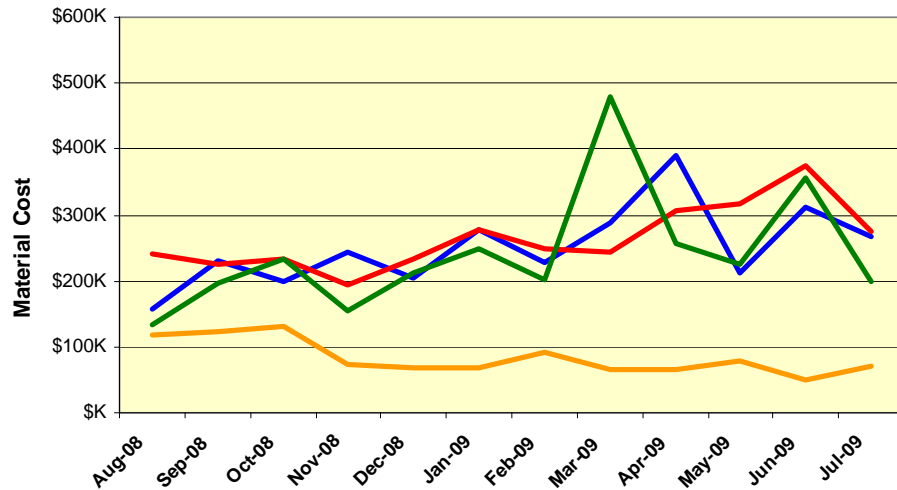
D - Metro Gold Line

Material and Labor Costs

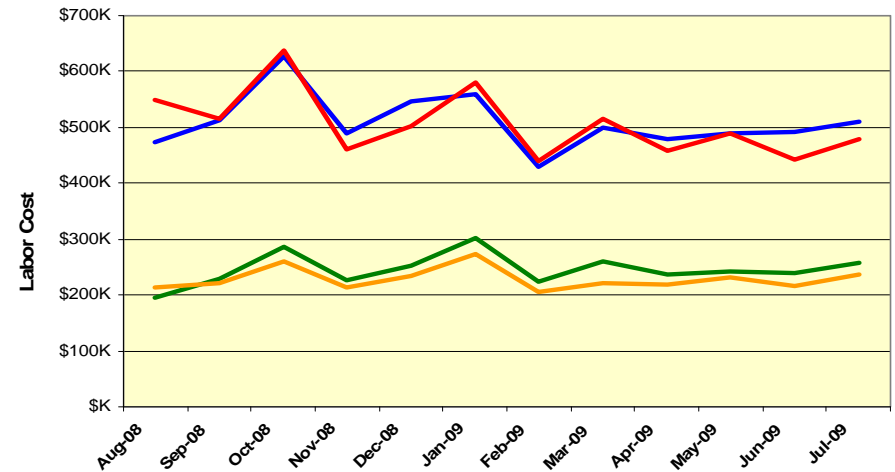
July 2009

MATERIALS	Aug-08	Sep-08	Oct-08	Nov-08	Dec-08	Jan-09	Feb-09	Mar-09	Apr-09	May-09	Jun-09	Jul-09
Blue Line	\$157K	\$230K	\$199K	\$244K	\$204K	\$279K	\$227K	\$289K	\$390K	\$211K	\$311K	\$268K
Red Line	\$240K	\$225K	\$232K	\$193K	\$232K	\$277K	\$249K	\$244K	\$306K	\$318K	\$375K	\$275K
Green Line	\$133K	\$195K	\$233K	\$153K	\$214K	\$248K	\$202K	\$479K	\$257K	\$226K	\$356K	\$200K
Gold Line	\$118K	\$123K	\$132K	\$74K	\$68K	\$69K	\$92K	\$65K	\$66K	\$78K	\$50K	\$71K
Totals	\$649K	\$774K	\$795K	\$665K	\$717K	\$873K	\$771K	\$1,077K	\$1,019K	\$834K	\$1,092K	\$814K

Material Costs



Labor Costs

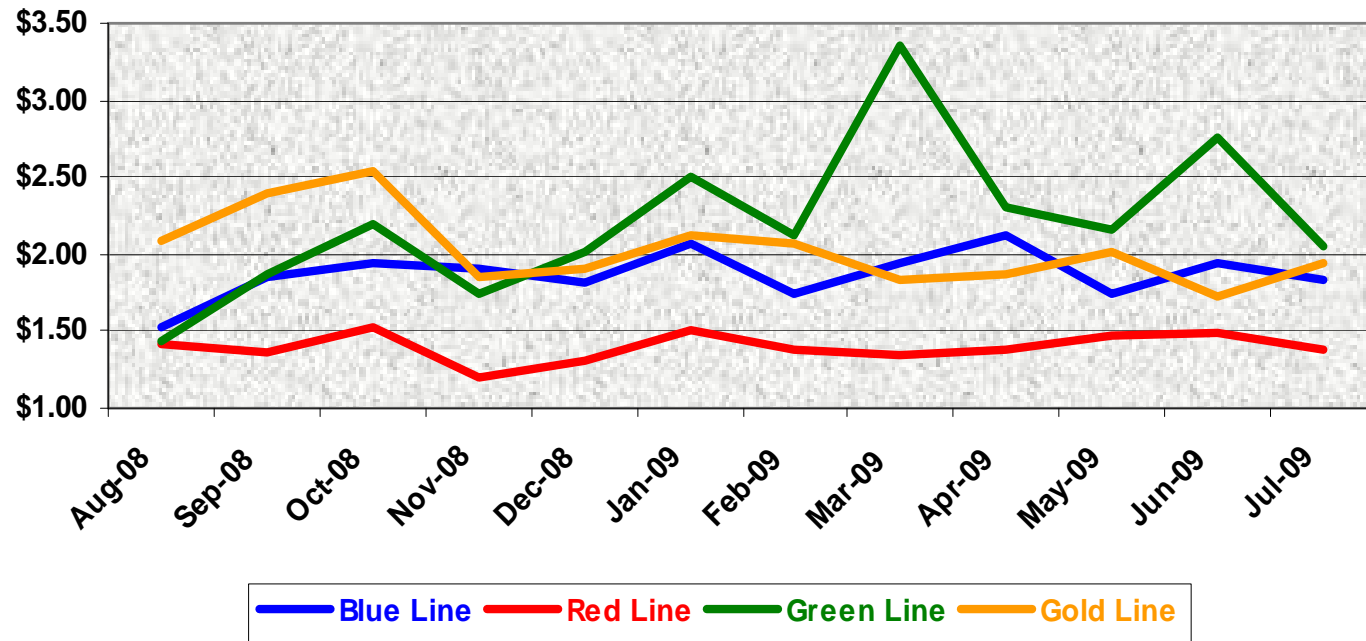


LABOR	Aug-08	Sep-08	Oct-08	Nov-08	Dec-08	Jan-09	Feb-09	Mar-09	Apr-09	May-09	Jun-09	Jul-09
Blue Line	\$473K	\$513K	\$628K	\$489K	\$547K	\$560K	\$429K	\$501K	\$480K	\$490K	\$492K	\$510K
Red Line	\$548K	\$516K	\$637K	\$460K	\$503K	\$579K	\$440K	\$516K	\$459K	\$488K	\$443K	\$478K
Green Line	\$196K	\$229K	\$287K	\$227K	\$252K	\$302K	\$225K	\$261K	\$236K	\$241K	\$238K	\$257K
Gold Line	\$214K	\$220K	\$260K	\$214K	\$233K	\$272K	\$205K	\$221K	\$218K	\$232K	\$217K	\$238K
Totals	\$1,431K	\$1,479K	\$1,812K	\$1,390K	\$1,535K	\$1,713K	\$1,298K	\$1,498K	\$1,392K	\$1,452K	\$1,390K	\$1,483K



Cost Per Mile July 2009

Cost per mile:	Aug-08	Sep-08	Oct-08	Nov-08	Dec-08	Jan-09	Feb-09	Mar-09	Apr-09	May-09	Jun-09	Jul-09	Average
Blue Line	\$1.52	\$1.84	\$1.95	\$1.90	\$1.82	\$2.06	\$1.75	\$1.94	\$2.12	\$1.74	\$1.95	\$1.83	\$1.82
Red Line	\$1.42	\$1.36	\$1.53	\$1.20	\$1.31	\$1.50	\$1.39	\$1.35	\$1.38	\$1.46	\$1.49	\$1.37	\$1.39
Green Line	\$1.43	\$1.87	\$2.19	\$1.75	\$2.01	\$2.50	\$2.12	\$3.36	\$2.31	\$2.16	\$2.75	\$2.05	\$2.09
Gold Line	\$2.10	\$2.40	\$2.54	\$1.86	\$1.90	\$2.12	\$2.08	\$1.83	\$1.86	\$2.02	\$1.73	\$1.94	\$2.08



No facility costs are included

Rail Fleet Services Instruction

July 2009

Training classes completed during the month of July 2009

July 2009

Description	Status	Start	End	Course Hours	Student Count	Training Hours
Blue Line Training - LRV:						
RFS ANSALDOBREDA 2550 PANTOGRAPH	Complete	7/1/2009	7/1/2009	8	2	16
RFS ANSALDOBREDA 2550 VEHICLE CLASSES	Complete	7/9/2009	7/31/2009	112	3	336
RFS ANSALDOBREDA 2550 LIGHTING	Complete	7/28/2009	7/28/2009	4	2	8
ETD STRESS MANAGEMENT	Complete	7/9/2009	7/9/2009	3	2	6
SUSTAINABILITY AWARENESS TRAINING	Complete	7/14/2009	7/14/2009	2	25	50
MOP EAP AS A SUPERVISORY TOOL	Complete	7/23/2009	7/23/2009	1.5	1	1.5
MOP RECORDS MANAGEMENT	Complete	7/23/2009	7/23/2009	2	1	2
Confined Space Entry (Video)	Complete	7/30/2009	7/30/2009	2	1	2
HAZARD COMMUNICATION TRAINING	Complete	7/16/2009	7/16/2009	4	2	8
TRANSIT TERRORISM AWARENESS TRAINING	Complete	7/29/2009	7/29/2009	1	1	1
FRONTLINE SAFETY TRAINING	Complete	7/27/2009	7/27/2009	3	1	3
RFS 2-WEEK RAIL INTRODUCTION	Complete	6/29/2009	7/10/2009	80	1	80

Total Blue Line Training (Hours): 513.5

Red Line Training (Breda A650 HRV):

RFS CAR HOIST OPERATION	Complete	7/7/2009	7/7/2009	2	1	2
LOCKOUT-TAGOUT - CONTROL OF HAZ. ENERGY	Complete	7/7/2009	7/7/2009	2	1	2
HAZARD COMMUNICATION FOR EMPLOYEES	Complete	7/9/2009	7/9/2009	1.5	1	1.5
FORKLIFT TRAINING	Complete	7/10/2009	7/10/2009	2	1	2
M3 MAINTENANCE TECHNICIAN (RAIL)	Complete	7/10/2009	7/10/2009	8	1	8
RFS 2-WEEK RAIL INTRODUCTION	Complete	6/29/2009	7/10/2009	64.5	1	64.5
RFS WHEEL PRESS	Complete	7/15/2009	7/17/2009	24	5	120
RFS BRED A650 VEHICLE INTRO	Complete	7/20/2009	7/24/2009	40	2	80
FRONTLINE SAFETY TRAINING	Complete	7/27/2009	7/27/2009	3	1	3
MOP VIOLENCE IN THE WORKPLACE	Complete	7/9/2009	7/9/2009	4	1	4
RFS BRED A650 PROPULSION ABB	Complete	7/1/2009	7/31/2009	80	5	400

Total Red Line Training (Hours): 687

Green Line Training (P2550 & P2000 LRVs):

HAZARD COMMUNICATION FOR EMPLOYEES	Complete	7/1/2009	7/1/2009	1.5	3	4.5
P-CARD TRAINING FOR CARD HOLDERS AND AOS	Complete	7/14/2009	7/14/2009	2	2	4
MOP VIOLENCE IN THE WORKPLACE	Complete	7/9/2009	7/9/2009	4	1	4
SAFETY ORIENTATION FOR MGRS - 32 HOUR COURSE	Complete	5/8/2009	7/7/2009	32	1	32
ETD BUSINESS WRITING SKILLS	Complete	7/29/2009	7/29/2009	3	1	3
RAIL SYSTEM SAFETY	Complete	7/17/2009	7/17/2009	2.5	1	2.5

Total Green Line Training (Hours): 12.5

Gold Line Training (P2550 & P2000 LRVs):

RFS ANSALDOBREDA 2550 PANTOGRAPH	Complete	7/1/2009	7/1/2009	8	4	32
RFS ANSALDOBREDA 2550 APSILVPS/BATTERY	Complete	7/9/2009	7/10/2009	16	4	64
RFS ANSALDOBREDA 2550 INTEGRATED DISPLAY	Complete	7/13/2009	7/13/2009	8	4	32
RFS ANSALDOBREDA 2550 COMMUNICATIONS	Complete	7/15/2009	7/17/2009	24	4	96
RFS ANSALDOBREDA 2550 PROPULSION	Complete	7/17/2009	7/24/2009	56	4	224
RFS ANSALDOBREDA 2550 LIGHTING	Complete	7/28/2009	7/28/2009	4	4	16
RFS ANSALDOBREDA 2550 COUPLER	Complete	7/31/2009	7/31/2009	8	4	32
RFS 2-WEEK RAIL INTRODUCTION	Complete	6/29/2009	7/10/2009	80	1	80

Total Gold Line Training (Hours): 576

Total Rail Fleet Services Instruction for the month of July 2009 (Hours): 1,789.0

Core Vehicle Training Completed:

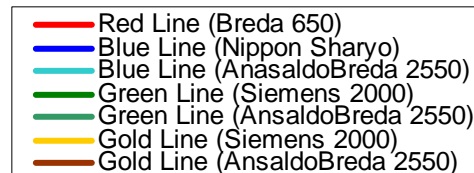
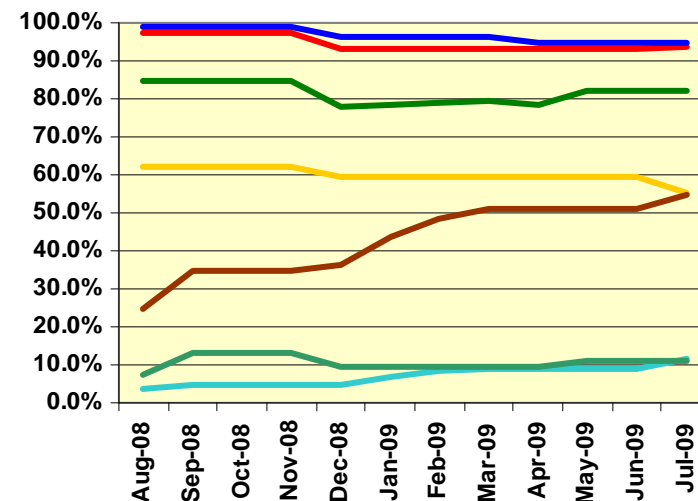
BLUE RED GREEN GOLD

Percentage of core vehicle training complete: 94.5% 93.5% 82.2% 55.1%

AnsaldoBreda 2550 Training Completed: 11.6% N/A 11.1% 54.7%

Average Specialist Rail Experience Level in Years: 10.1 8.1 7.2 8.0

Core Training Completed



Variations caused by new hires, employee transfers, & training completed



Metro

Absences vs. Overtime

July 2009

ABSENCE TYPE and HOURS	3940	3941	3942	3943	3944	Total
BER-BEREAVEMENT	0.00	0.00	24.00	0.00	80.00	104.00
CTO-COMPENSATORY TIME OFF	0.00	36.00	19.25	32.00	4.00	91.25
CVA - CASUAL VACATION	368.00	12.00	1,304.00	16.00	52.00	1,752.00
DSL-DISABILITY LEAVE/LONG	0.00	392.00	528.00	0.00	184.00	1,104.00
EFH-EMG. FLOAT HOL.	0.00	72.00	128.00	136.00	56.00	392.00
ETO-EXCUSED TIME OFF	0.00	27.47	13.48	6.50	1.00	48.45
FML-FAMILY CARE LEAVE	128.00	284.80	264.00	104.00	0.00	780.80
HLF-HOLIDAY FLOATING	24.00	664.00	504.00	136.00	280.00	1,608.00
HNP-HOLIDAY NOT PAID	0.00	0.00	0.00	8.00	8.00	16.00
HOL-HOLIDAY LEGAL	88.00	520.00	496.00	184.00	208.00	1,496.00
II-INDUSTRIAL INJURY	8.00	88.00	0.00	0.00	0.00	96.00
IS-INVESTIGATIVE SUSPENSION	0.00	0.00	0.00	16.00	0.00	16.00
JUR-JURY DUTY	0.00	0.00	168.00	8.00	0.00	176.00
LC1-LABOR CODE 233	16.00	80.00	111.27	80.00	48.00	335.27
LTI-OCCPIL/LONGTRM INJ LEAVE	0.00	56.00	320.00	0.00	0.00	376.00
MLN-MILITARY ABSENCE-UNPAID	0.00	0.00	0.00	16.00	0.00	16.00
RTO-REQUESTED TIME OFF-NO PAY	0.00	8.00	64.00	0.00	0.00	72.00
SCK-SICK PAY	0.00	104.00	178.47	136.00	48.00	466.47
SCW-SICK WITHOUT PAY	0.00	56.00	0.00	16.00	88.00	160.00
SUP-TEMPORARY SUPERVISOR	0.00	325.66	224.00	187.00	328.50	1,065.16
VAC-VACATION	80.00	1,441.44	344.00	635.00	607.23	3,107.67
Total Absence Hours	712.00	4,167.37	4,690.47	1,716.50	1,992.73	13,279.07
Number of Work Force	25.00	106.00	107.00	50.00	54.00	342.00
Full Work Force hours/month	4,332.50	18,369.80	18,543.10	8,665.00	9,358.20	59,268.60
Absence as a % of Work Force	16%	23%	25%	20%	21%	22%
OVERTIME TYPE and HOURS	3940	3941	3942	3943	3944	Total
CTB-COMPENSATORY TIME TO BANK	0.00	340.72	353.78	276.83	145.33	1,116.66
OTP-PREM OVERTIME	182.00	535.18	925.59	461.48	875.67	2,979.92
WLO-Worked Lunch Overtme	0.00	19.00	71.00	23.00	15.00	128.00
Total	182.00	894.90	1,350.37	761.31	1,036.00	4,224.58
Overtime as a % of Work Force	4%	5%	7%	9%	11%	7%
UNCOVERED ABSENCES	3940	3941	3942	3943	3944	Total
Absences FTE	4.11	24.04	27.06	9.90	11.50	76.61
OTP FTE	1.05	5.16	7.79	4.39	5.98	24.37
FTE Difference	3.06	18.88	19.27	5.51	5.52	52.24

